

# *Health and Social Conditions*

---

# 4

Introductory text	71
<b>Table 4.1</b> Expenditure on Social Welfare	77
<b>Table 4.2</b> Index of rates of payment for long-term unemployed, CPI and gross average industrial earnings	77
<b>Table 4.3</b> Recipients of weekly Social Welfare payments by programme	78
<b>Graph</b> <i>Proportion of recipients of weekly Social Welfare payments by programme, 2003</i>	78
<b>Table 4.4</b> Recipients of Social Welfare payments by county, 2003	79
<b>Table 4.5</b> Expenditure on Social Welfare by scheme	80-81
<b>Table 4.6</b> Financing of Social Welfare expenditure	82
<b>Table 4.7</b> Recipients by type of Old Age Pension	82
<b>Table 4.8</b> Recipients and cost of Child Benefit	83
<b>Graph</b> <i>Number of families in receipt of Child Benefit by number of eligible children</i>	83
<b>Table 4.9</b> Recipients of Illness, Disability and Caring payments by type	84
<b>Table 4.10</b> Recipients of Unemployment and Employment supports by type of payment	84
<b>Graph</b> <i>Number of recipients of Unemployment Supports</i>	84
<b>Table 4.11</b> Estimated non-capital health expenditure by programme	85
<b>Table 4.12</b> Payments by General Medical Services (Payments) Board	85

<b>Table 4.13</b>	Publicly funded acute hospitals statistics, 2002	86
<b>Table 4.14</b>	Psychiatric hospitals and units: in-patients at 31 December	86
<b>Graph</b>	<i>GMS(P)B Payments to Pharmacists, Doctors and Dentists</i>	86
<b>Table 4.15</b>	HIV positive antibody results	87
<b>Graph</b>	<i>Cases of and deaths from AIDS</i>	87
<b>Table 4.16</b>	Main sites of occurrence of new cancers diagnosed	88
<b>Table 4.17</b>	Persons killed and injured on roads	88
<b>Table 4.18</b>	Road casualties classified by road user type, 2002	89
<b>Table 4.19</b>	Road casualties classified by age and sex, 2002	89
<b>Graph</b>	<i>Road deaths by age group, 2002</i>	89
<b>Table 4.20</b>	Fatal accidents reported to the Health and Safety Authority	90
<b>Graph</b>	<i>Principal causes of fires attended by brigades</i>	90
<b>Table 4.21</b>	Causes of fires attended by brigades	91
<b>Table 4.22</b>	Deaths due to fire	91
<b>Graph</b>	<i>Deaths due to fire</i>	91
<b>Table 4.23</b>	Number on register of Dáil Electors	92
<b>Table 4.24</b>	Votes recorded at Dáil elections	93



# 4

## *Health & Social Conditions*

- Social Welfare expenditure fell from 11.2% of Gross National Income (GNI) in 1994 to 7.5% in 2000 but has since risen to 9.3% in 2003.
- General Medical Services (Payments) Board payments to Pharmacists rose by 125% from 1999 to 2003.
- The number of people testing positive for HIV rose by 115% from 1999 to 2003.
- 29% of fatal accidents at work in 2003 were in Agriculture and forestry.

## **Introduction**

The statistics in this chapter relate to Social Services, Health Services, Accidents, and the Register of Electors. They have been obtained from a range of administrative sources. The information on social services provides details on Social Welfare expenditure and/or recipients of Social Welfare payments. The information on Health includes details on expenditure, hospital admissions and discharges and incidence of certain diseases. Data on accidents comes from both the Health and Safety Authority in respect of accidents at work and the National Roads Authority regarding road accidents. Data on incidence and causes of fires is obtained from the Department of Environment, Heritage and Local Government.

## **Social Services**

From 1994 to 2003, there was an increase of 120% in expenditure on social welfare payments. However as a proportion of Gross National Income (GNI), total Social Welfare expenditure fell from 11.2% in 1994 to 9.3% in 2003. A total of 959,432 people were in receipt of a weekly social welfare payment at the end of 2003. After a decline in unemployment during the late 1990s, the changed economic situation is reflected in the overall increase in the number of Unemployment Assistance and Unemployment Benefit recipients, with the 2003 figure of 145,339 representing a 25% increase on the total recorded in 2000, although still below the 1999 figure.

In 2003, the main areas of expenditure by programme group were: Old Age (24%), Child Related (17%), Widows, Widowers & One Parent Families (16%) and Illness, Disability and Caring (15%). The administration of the social welfare system accounted for 4% of total expenditure.

The total number of people receiving disability benefit and disability allowance rose by 30% between 1999 and 2003.

## **Health**

The general hospital programme was by far the largest area of non-capital health expenditure, amounting to 46% of gross expenditure in 2003. Other significant areas of expenditure were the community health services and programmes for people with disabilities, which respectively accounted for 18% and 13% of gross expenditure. General Medical Services (Payment) Board payments to Pharmacists rose by 125% from 1999 to 2003.

The incidence of new AIDS cases fell by 71% from 1999 to 2002 but the incidence of new HIV cases rose by 115% from 1999 to 2003.

## **Safety**

The number of persons killed and injured in road accidents fell by 30% between 1996 and 2002.

The highest number of fatal accidents at work occurred in the agriculture, hunting and forestry sector.

60% of fires attended by brigades during 2001 and 59% in 2002 were either started maliciously or were due to unknown causes.

### **Register of Electors**

The Register of Dáil Electors showed an overall increase of 9.4% in the county council areas and an overall decrease of 1.8% in the city council areas, from 2000 to 2004.

**Table 4.1**

Total Social Welfare expenditures include the full cost of Supplementary Welfare Allowance, administered by the Health Boards as well as expenditure on the Redundancy and Insolvency schemes administered by the Department of Enterprise, Trade and Employment.

**Table 4.3**

Recipients of child benefit are not included under "Child Related".

**Table 4.4**

Adoptive Benefit recipients are not broken down by county but are included in the "Other" category under "Child Related".

**Table 4.5**

Widowed Parent Grant was introduced in December 1999.

Carer's Benefit was introduced in October 2000.

Farm Assist was introduced in April 1999.

The 2000 out-turn excludes a payment of £120 million from the Social Insurance fund to the National Training Fund, which was established at end-2000. From 2001, this fund (which is under the aegis of the Department of the Tanaiste, Enterprise, Trade and Employment), is being financed by way of a new National Training Fund Levy.

**Table 4.6**

Payment to National Training Fund 2000 – see note to Table 4.5.

**Table 4.9**

Carer's Benefit was introduced in October 2000.

There were 26 persons in receipt of Prescribed Relatives Allowance at the end of December 2003. This was replaced by Carer's Allowance in 1990.

Disablement Pension is paid where a person suffers loss of physical or mental faculty as a result of an accident at work or contracting an occupational disease. It can be paid in addition to other Social Welfare payments such as Disability Benefit and Invalidity Pension and can also be paid where a person continues to work.

**Table 4.10**

The figures for Back to Work Allowance and Back to Work Enterprise Allowance recipients for 2001 onwards are not comparable with earlier years. This is due to a revision in recording procedure. Total figures between the two schemes are comparable.

Farm Assist was introduced in April 1999 and replaced the Smallholders Unemployment Assistance Scheme. The great majority of recipients of the Smallholders Unemployment Assistance Scheme transferred to Farm Assist during the period 1999 to 2000.

**Table 4.13**

District hospitals are not included in this table.

Figures for Average Number of In-Patient / Day Beds Available refer to the average number of beds available for use during the year, taking beds that have been temporarily closed or opened into account.

The Average Length of Stay calculations for area and national totals, exclude Incorporated Orthopaedic, NRH, Peamount, Baldoyle and Manorhamilton because of the nature of their specialities which involve substantially longer stays than in acute hospitals generally.

**Table 4.14**

The figure for the Eastern region includes the Central Mental Hospital but not St. Joseph's Intellectual Disability Services at St. Ita's Hospital.

**Table 4.15**

These figures are produced by the National Disease Surveillance Centre. The data for the graph 'Cases of and deaths from AIDS' is from the same source.





**Table 4.1 Expenditure on Social Welfare**

Year	Total Social Welfare expenditure	Social Welfare expenditure as a percentage of:	
		Gross National Income	Gross Domestic Product
	€m	%	%
1994	4,775	11.2	10.3
1995	5,332	11.2	10.1
1996	5,558	10.5	9.6
1997	5,744	9.5	8.6
1998	6,046	8.8	7.8
1999	6,283	8.1	7.0
2000	6,713	7.5	6.5
2001	7,842	8.0	6.8
2002	9,517	9.0	7.4
2003	10,494	9.3	7.8

Source: Department of Social and Family Affairs

**Table 4.2 Index of rates of payment for long-term unemployed, CPI and gross average industrial earnings**

Base year 1994=100

Year	Long-term unemployed				Consumer Price Index	Gross average industrial earnings
	Single person	Couple	Couple with two children including Child Benefit	Couple with four children including Child Benefit		
1994	100.0	100.0	100.0	100.0	100.0	100.0
1995	102.5	102.5	104.2	105.9	102.5	102.1
1996	105.7	105.5	107.2	108.7	104.3	105.1
1997	110.7	110.1	110.9	113.0	105.8	108.4
1998	115.6	114.4	114.6	116.7	108.3	113.1
1999	120.5	119.6	119.4	121.6	110.1	119.4
2000	127.0	127.6	128.0	131.0	116.2	127.3
2001	140.2	142.9	147.9	154.8	121.9	137.4
2002	153.4	159.4	168.8	179.3	127.6	146.4
2003	161.1	167.5	176.9	187.8	132.0	157.1

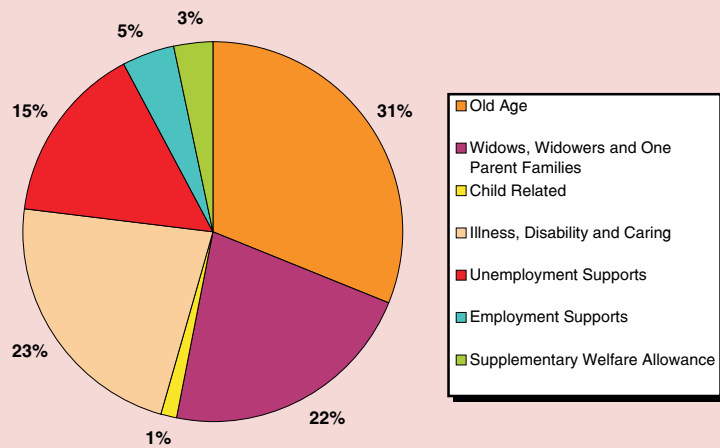
Source: Department of Social and Family Affairs

**Table 4.3 Recipients of weekly Social Welfare payments by programme**

Programme	Number					
	1998	1999	2000	2001	2002	2003
Old Age	256,809	261,281	267,760	276,065	287,395	298,169
Widows, Widowers and One Parent Families	198,094	203,091	206,130	209,011	211,385	211,774
Child Related	6,900	7,640	8,067	12,134	12,696	11,797
Illness, Disability and Caring	161,588	172,104	181,569	193,536	206,137	216,292
Unemployment Supports	182,087	149,705	116,069	126,447	137,982	145,339
Employment Supports	55,885	65,120	64,833	56,582	50,920	44,113
Supplementary Welfare Allowance	16,300	21,269	25,094	29,167	32,073	31,217
Miscellaneous	586	548	472	433	383	342
<b>Total Recipients</b>	<b>878,249</b>	<b>880,758</b>	<b>869,994</b>	<b>903,375</b>	<b>938,971</b>	<b>959,043</b>

Source: Department of Social and Family Affairs

**Proportion of recipients of weekly Social Welfare payments by programme, 2003**



**Table 4.4 Recipients of Social Welfare payments by county, 2003<sup>1</sup>**

County	Number						
	Old Age	Widows, Widowers and One Parent Families	Child Related	Illness, Disability and Caring	Live Register	Employment Supports	Supplementary Welfare Allowance
Carlow	3,264	2,657	168	3,354	2,227	619	456
Cavan	4,930	2,865	146	2,972	2,128	752	202
Clare	7,297	4,718	304	4,840	4,219	1,265	782
Cork	31,119	22,519	1,288	27,199	17,200	4,200	2,917
Donegal	11,335	7,404	333	9,339	10,149	3,703	954
Dublin	71,235	62,108	3,643	56,377	43,562	8,675	12,204
Galway	14,404	9,535	601	10,240	9,348	2,989	1,934
Kerry	10,273	6,556	339	7,306	7,086	1,989	1,000
Kildare	6,556	6,995	581	7,377	4,752	1,036	1,112
Kilkenny	5,306	3,364	218	3,777	2,716	699	517
Laois	3,861	2,650	159	2,697	2,196	508	344
Leitrim	2,610	1,473	76	1,894	1,231	554	121
Limerick	12,013	9,538	494	11,806	8,123	1,669	1,148
Longford	2,744	2,009	77	2,281	1,820	558	281
Louth	7,594	6,231	327	7,357	7,508	1,327	1,054
Mayo	10,444	6,067	288	7,238	6,106	2,971	731
Meath	7,007	5,338	505	5,866	3,218	756	1,066
Monaghan	4,199	2,612	125	2,985	2,486	1,029	234
Offaly	4,330	3,185	182	3,729	2,840	594	245
Roscommon	4,695	2,427	130	2,939	1,389	785	308
Sligo	4,589	3,073	155	3,467	2,236	981	153
Tipperary	11,428	7,752	376	8,249	6,548	1,693	840
Waterford	7,358	5,864	313	5,565	6,098	1,251	953
Westmeath	4,856	4,084	228	3,981	3,628	746	483
Wexford	8,882	6,930	341	6,759	7,141	1,643	633
Wicklow	6,958	6,001	358	5,605	4,649	1,061	545
Other	28,882	7,819	42	1,093	–	60	–
<b>Total</b>	<b>298,169</b>	<b>211,774</b>	<b>11,797</b>	<b>216,292</b>	<b>170,604</b>	<b>44,113</b>	<b>31,217</b>

<sup>1</sup> Estimated

Source: Department of Social and Family Affairs

TABLE 4.4

Table 4.5 Expenditure on Social Welfare by scheme

	€m					
Scheme	1998	1999	2000	2001	2002	2003 <sup>1</sup>
<b>Old Age</b>	<b>1,425.5</b>	<b>1,525.5</b>	<b>1,707.0</b>	<b>1,987.5</b>	<b>2,296.3</b>	<b>2,500.0</b>
Old Age (Contributory) Pension	461.0	498.1	577.4	716.6	868.5	946.9
Retirement Pension	463.5	511.5	594.2	697.4	803.4	899.0
Old Age (Non-contributory) Pension	424.6	439.4	456.2	490.7	537.3	565.0
Pre-Retirement Allowance	76.4	76.5	79.3	82.8	87.0	89.1
<b>Widows, Widowers and One Parent Families</b>	<b>1,088.5</b>	<b>1,165.7</b>	<b>1,265.8</b>	<b>1,413.0</b>	<b>1,592.6</b>	<b>1,706.6</b>
Widow/Widower's (Contributory) Pension	517.5	547.8	597.4	673.0	761.5	826.1
Widow/Widower's (Non-contributory) Pension	84.1	88.4	94.9	107.2	116.5	116.8
Deserted Wife's Benefit	88.6	86.0	83.9	84.9	88.2	89.2
Deserted Wife's Allowance	8.5	8.4	8.4	9.2	10.2	10.6
Prisoner's Wife's Allowance	0.0	0.0	0.0	0.0	0.0	0.0
One Parent Family Payment	389.9	435.2	480.1	537.4	613.0	660.6
Widowed Parent Grant (Contributory/Non-contributory)			1.1	1.4	3.1	3.2
<b>Child Related</b>	<b>584.8</b>	<b>623.6</b>	<b>703.9</b>	<b>1,058.1</b>	<b>1,578.9</b>	<b>1,789.3</b>
Maternity Benefit	48.5	52.7	58.0	78.9	99.1	107.3
Health and Safety Benefit	0.1	0.2	0.2	0.2	0.2	0.2
Adoptive Benefit	0.2	0.2	0.2	0.3	0.6	0.5
Orphan's (Contributory) Allowance	3.0	3.7	5.6	9.4	11.7	8.9
Orphan's (Non-contributory) Pension	1.3	1.8	2.4	4.4	4.5	5.8
Child Benefit	531.7	565.0	637.5	964.8	1,462.8	1,666.5
<b>Illness, Disability and Caring</b>	<b>855.6</b>	<b>935.4</b>	<b>1,048.6</b>	<b>1,233.1</b>	<b>1,453.6</b>	<b>1,621.1</b>
Disability Benefit	241.4	262.7	280.8	329.9	385.3	433.4
Invalidity Pension	264.3	279.6	311.4	354.5	403.6	440.3
Carer's Benefit			0.0	2.5	5.8	6.9
Injury Benefit	9.0	9.3	9.8	10.9	11.8	11.9
Disablement Benefit	48.1	49.4	50.7	54.3	59.4	60.8
Death Benefit	4.1	4.4	4.7	5.1	5.6	5.8
Disability Allowance	219.6	245.2	279.2	332.3	407.6	463.6
Medical Care	0.2	0.2	0.2	0.2	0.2	0.3
Carer's Allowance	57.3	72.9	99.6	130.3	160.0	183.3
Blind Person's Pension	11.7	11.8	12.3	13.2	14.2	14.8
<b>Unemployment Supports</b>	<b>1,070.5</b>	<b>909.4</b>	<b>734.3</b>	<b>720.6</b>	<b>935.5</b>	<b>1,043.0</b>
Unemployment Benefit	300.5	293.8	265.2	290.7	423.5	477.1
Unemployment Assistance	770.0	615.6	469.1	429.9	512.0	566.0
<b>Employment Supports</b>	<b>200.2</b>	<b>251.1</b>	<b>285.3</b>	<b>283.7</b>	<b>269.1</b>	<b>247.6</b>
Family Income Supplement	36.4	41.1	39.4	37.1	42.4	45.4
Employment Support Services	163.8	190.1	204.5	196.0	168.1	139.4
Farm Assist/Smallholders		19.9	41.4	50.7	58.6	62.8

**Table 4.5 Expenditure on Social Welfare by scheme (continued)**

	€m					
Scheme	1998	1999	2000	2001	2002	2003 <sup>1</sup>
<b>Supplementary Welfare Allowance and Miscellaneous</b>	<b>525.5</b>	<b>561.8</b>	<b>645.2</b>	<b>772.2</b>	<b>970.8</b>	<b>1,159.0</b>
Supplementary Welfare Allowance	223.1	239.7	294.9	363.6	484.9	587.8
Treatment Benefit	39.2	45.2	57.8	56.5	60.8	63.3
Rent Allowance	0.8	0.8	0.8	0.7	0.7	0.7
Free Schemes	194.7	196.8	204.3	241.0	296.0	340.5
Miscellaneous	39.5	50.1	64.3	76.9	69.6	68.5
Equal Treatment Payments	9.0	4.1	0.3	0.1	0.0	0.0
Redundancy and Insolvency	19.2	25.0	22.9	33.4	58.7	98.2
<b>Total</b>	<b>5,750.7</b>	<b>5,972.5</b>	<b>6,390.2</b>	<b>7,468.1</b>	<b>9,096.7</b>	<b>10,066.6</b>
Administration	296.2	309.7	323.1	374.7	420.1	427.0
<b>Total expenditure</b>	<b>6,046.8</b>	<b>6,282.2</b>	<b>6,713.3</b>	<b>7,842.9</b>	<b>9,516.8</b>	<b>10,493.6</b>

<sup>1</sup> Provisional

Source: Department of Social and Family Affairs

TABLE 4.5

**Table 4.6 Financing of Social Welfare expenditure**

	%					
Source	1998	1999	2000	2001	2002	2003 <sup>1</sup>
<b>Social Welfare expenditure</b>						
State	56.0	54.7	52.7	52.7	53.8	53.9
Employers	33.2	37.1	41.2	41.5	37.0	35.2
Employees	9.0	9.9	11.1	10.5	10.2	10.3
Self-employed	2.7	3.3	2.8	2.4	2.7	2.6
National Lottery	0.2	0.5	0.5	0.5	0.3	0.0
Other receipts including investment income	0.0	0.1	0.4	0.6	0.5	0.4
Social insurance fund surplus	-1.1	-5.4	-6.5	-8.0	-4.4	-2.4
Payment to the National Training Fund			-2.3	0.0	0.0	0.0
<b>Total %</b>	100.0	100.0	100.0	100.0	100.0	100.0
<b>Total Expenditure (€m)</b>	<b>6,046.8</b>	<b>6,282.2</b>	<b>6,713.3</b>	<b>7,842.9</b>	<b>9,516.8</b>	<b>10,493.6</b>

<sup>1</sup> Provisional

Source: Department of Social and Family Affairs

**Table 4.7 Recipients by type of Old Age Pension**

	Number				
Year	Old Age (contributory) Pension	Retirement Pension	Old Age (non-contributory) Pension	Pre- retirement Allowance	Total
1993	71,861	58,400	111,011	15,882	257,154
1994	70,820	62,211	108,301	15,284	256,616
1995	69,179	65,761	102,984	15,023	252,947
1996	67,988	69,740	101,624	14,151	253,503
1997	70,022	71,793	98,835	13,647	254,297
1998	71,706	75,316	95,890	13,897	256,809
1999	76,241	78,868	93,023	13,149	261,281
2000	86,217	78,370	90,652	12,521	267,760
2001	94,871	80,326	89,061	11,807	276,065
2002	105,295	83,055	87,823	11,222	287,395
2003	113,970	86,509	86,733	10,957	298,169

Source: Department of Social and Family Affairs

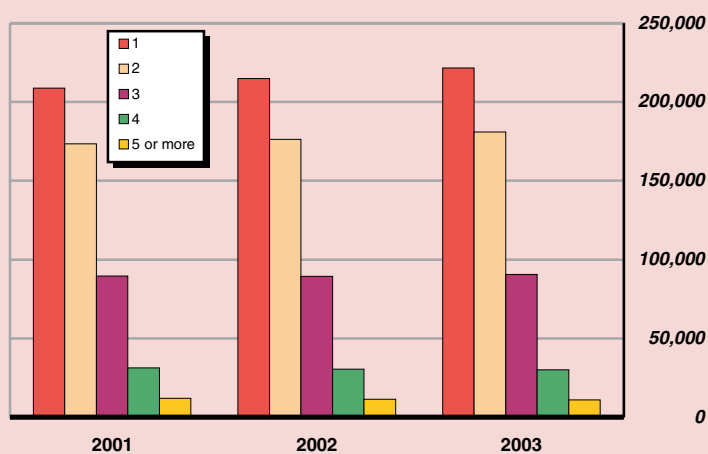
**Table 4.8 Recipients and cost of Child Benefit**

Eligible children in family	Recipient families					
	1998	1999	2000	2001	2002	2003
1	190,083	197,457	203,342	208,712	214,916	221,515
2	169,509	170,777	171,646	173,525	176,284	181,018
3	93,671	92,172	90,667	89,564	89,397	90,512
4	35,932	33,979	32,431	31,225	30,552	29,996
5	10,592	9,651	8,795	8,257	7,884	7,732
6	3,304	2,965	2,628	2,450	2,275	2,161
7	1,071	980	869	742	712	669
8	401	324	294	287	267	264
9	145	107	89	94	95	88
10	57	56	48	39	36	34
11	22	22	20	16	15	15
12	16	11	7	6	7	4
13	6	2	3	1	0	0
14	2	1	1	1	1	1
15	0	0	0	0	0	0
<b>Total families</b>	<b>504,811</b>	<b>508,504</b>	<b>510,840</b>	<b>514,919</b>	<b>522,441</b>	<b>534,009</b>
<b>Total children</b>	<b>1,039,746</b>	<b>1,028,877</b>	<b>1,018,175</b>	<b>1,014,340</b>	<b>1,019,551</b>	<b>1,034,851</b>
<b>Total cost of Child Benefit (€m)</b>	<b>531.7</b>	<b>565.0</b>	<b>637.5</b>	<b>964.8</b>	<b>1,462.8</b>	<b>1,666.5</b>

Source: Department of Social and Family Affairs

TABLE 4.8

**Number of families in receipt of Child Benefit by number of eligible children**



**Table 4.9 Recipients of Illness, Disability and Caring payments by type**

Payment type	Number					
	1998	1999	2000	2001	2002	2003
Disability Benefit	43,766	45,535	46,940	50,715	54,590	57,464
Invalidity Pension	44,925	46,946	48,663	50,615	52,147	53,414
Interim Disability Benefit	439	514	488	449	404	295
Carer's Benefit			50	425	615	639
Disability Allowance	47,126	50,431	54,303	57,655	62,783	67,720
Carer's Allowance	11,416	14,387	16,478	18,785	20,395	21,316
Blind Person's Pension	2,358	2,304	2,229	2,125	2,095	2,061
Injury Benefit	746	748	828	861	828	821
Death Benefit Pension	630	662	665	676	668	664
Disablement Pension	10,182	10,577	10,925	11,230	11,612	11,898
<b>Total</b>	<b>161,588</b>	<b>172,104</b>	<b>181,569</b>	<b>193,536</b>	<b>206,137</b>	<b>216,292</b>

Source: Department of Social and Family Affairs

TABLE 4.9

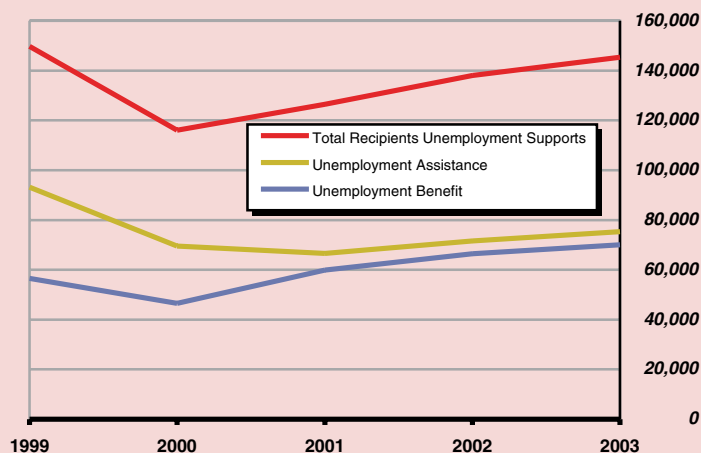
TABLE 4.10

**Table 4.10 Recipients of Unemployment and Employment supports by type of payment**

Payment type	Number					
	1998	1999	2000	2001	2002	2003
<b>Total Recipients Unemployment Supports</b>	<b>182,087</b>	<b>149,705</b>	<b>116,069</b>	<b>126,447</b>	<b>137,982</b>	<b>145,339</b>
Unemployment Benefit	61,591	56,576	46,565	59,884	66,416	70,090
Unemployment Assistance	120,496	93,129	69,504	66,563	71,566	75,249
<b>Total Recipients Employment Supports</b>	<b>55,885</b>	<b>65,120</b>	<b>64,833</b>	<b>56,892</b>	<b>50,920</b>	<b>44,113</b>
Back to Work Allowance	24,128	31,931	34,506	16,218	11,496	7,197
Back to Work Enterprise Allowance	7,431	5,681	4,503	15,973	13,490	9,872
Back to Education Allowance	4,139	4,518	4,237	4,101	5,041	5,696
Part-time Job Incentive Scheme	568	567	474	340	336	324
Family Income Supplement	13,143	14,549	13,062	11,880	12,043	12,317
Farm Assist/Smallholders	6,476	7,874	8,051	8,380	8,514	8,707

Source: Department of Social and Family Affairs

**Number of recipients of Unemployment Supports**





**Table 4.11 Estimated non-capital health expenditure by programme**

	€m					
<b>Programme</b>	<b>1998</b>	<b>1999</b>	<b>2000</b>	<b>2001</b>	<b>2002<sup>1</sup></b>	<b>2003<sup>2</sup></b>
Community Protection Programme	99.9	136.0	224.8	314.3	275.3	298.2
Community Health Services Programme	687.2	883.5	985.0	1,191.6	1,526.1	1,611.7
Community Welfare Programme	285.5	336.5	445.9	581.4	703.8	767.6
Psychiatric Programme	347.5	394.5	433.7	497.1	563.7	612.0
Programme for the disabled	436.6	520.8	651.6	815.9	962.9	1,122.8
General Hospital Programme	1,988.5	2,317.7	2,604.5	3,291.4	3,801.5	4,126.7
General Support Programme	194.8	218.1	264.9	318.3	333.5	388.9
<b>Gross Total</b>	<b>4,040.0</b>	<b>4,807.3</b>	<b>5,610.3</b>	<b>7,010.1</b>	<b>8,166.7</b>	<b>8,927.8</b>
<b>Total Non-Capital Income</b>	<b>220.9</b>	<b>233.4</b>	<b>251.3</b>	<b>270.8</b>	<b>300.2</b>	<b>334.3</b>
<b>Net Total</b>	<b>3,819.1</b>	<b>4,573.9</b>	<b>5,359.1</b>	<b>6,739.3</b>	<b>7,866.5</b>	<b>8,593.5</b>

<sup>1</sup> Provisional outturn<sup>2</sup> Estimated

Source: Department of Health and Children

TABLE 4.11

**Table 4.12 Payments by General Medical Services (Payments) Board**

	€m					
<b>Category</b>	<b>1998</b>	<b>1999</b>	<b>2000</b>	<b>2001</b>	<b>2002</b>	<b>2003</b>
Doctors	158.3	154.8	169.9	211.8	282.1	295.7
Pharmacists	350.4	417.2	527.6	670.9	813.2	937.7
Dentists	18.1	18.3	38.1	41.7	45.7	49.9
General Practice development	8.8	9.3	10.2	11.6	17.6	13.1
High tech drugs scheme	34.4	42.3	51.9	65.1	84.6	109.1
Optometrists	–	1.8	8.7	9.8	13.9	13.8
Administration	8.5	9.3	11.8	12.7	13.7	12.5
<b>Total</b>	<b>578.6</b>	<b>653.0</b>	<b>818.2</b>	<b>1,023.6</b>	<b>1,270.9</b>	<b>1,431.8</b>

Source: General Medical Services Report

TABLE 4.12

**Table 4.13 Publicly funded acute hospitals statistics, 2002**

Health Board area	Number of hospitals	Average number of in-patient beds available	In-patients discharged/deaths	Average length of stay in days	Average number of day beds available	Day cases
Eastern	23	5,019	190,878	7.8	392	187,257
Midland	3	500	29,936	5.1	37	16,120
Mid-Western	6	737	43,614	5.9	56	25,959
North-Eastern	5	858	45,542	5.4	62	21,828
North-Western	3	713	35,759	5.7	29	31,941
South-Eastern	6	1,196	64,733	5.4	68	28,194
Southern	9	1,897	79,973	6.8	104	53,080
Western	5	1,288	67,484	5.9	64	38,832
<b>Total</b>	<b>60</b>	<b>12,208</b>	<b>557,919</b>	<b>6.5</b>	<b>812</b>	<b>403,211</b>

Source: Department of Health and Children

TABLE 4.13

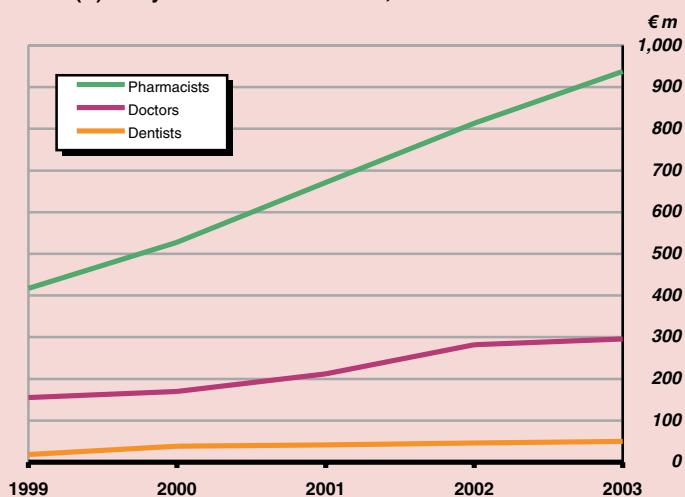
TABLE 4.14

**Table 4.14 Psychiatric hospitals and units: in-patients at 31 December**

Health Board area	1997	1998	1999	2000	2001	2002
Eastern	1,404	1,419	1,324	1,273	1,244	1,186
Midland	336	303	278	281	271	252
Mid-Western	434	429	427	424	383	270
North-Eastern	277	260	229	197	194	166
North-Western	192	191	166	141	141	122
South-Eastern	802	828	762	770	684	680
Southern	725	772	716	639	634	549
Western	650	618	567	505	454	435
<b>Total</b>	<b>4,820</b>	<b>4,820</b>	<b>4,469</b>	<b>4,230</b>	<b>4,005</b>	<b>3,660</b>

Source: Department of Health and Children

**GMS(P)B Payments to Pharmacists, Doctors and Dentists**



**Table 4.15 HIV positive antibody results**

Category	Cases				
	1999	2000	2001	2002	2003
Heterosexuals	59	127	173	232	221
Homosexuals/Bisexuals	40	72	73	46	75
Intravenous Drug Users	69	83	38	50	47
Mother to Child transmission (MTC)	n/a	4	6	8	12
Other	18	4	2	5	5
Unknown	0	0	7	23	39
<b>Total</b>	<b>186</b>	<b>290</b>	<b>299</b>	<b>364</b>	<b>399</b>

Source: National Disease Surveillance Centre

**Cases of and deaths from AIDS**

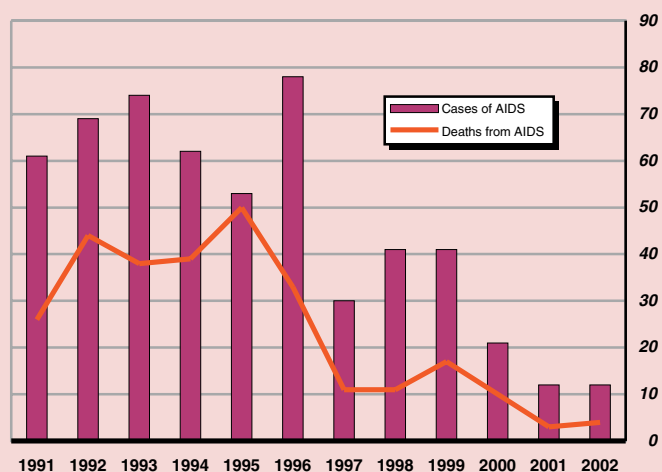


TABLE 4.15

**Table 4.16 Main sites of occurrence of new cancers diagnosed**

Cancer site	Cases					
	Male		Female		Total	
	2001	2002	2001	2002	2001	2002
Non-melanoma skin	2,691	2,687	2,420	2,441	5,111	5,128
Colorectal	1,056	1,078	772	780	1,828	1,858
Breast	15	15	1,856	1,921	1,871	1,936
Lung	944	944	598	620	1,542	1,564
Prostate	1,484	1,571	–	–	1,484	1,571
Cervix	–	–	164	159	164	159
Melanoma	186	198	245	248	431	446
Lymphoma	318	334	241	247	559	581
Stomach	280	279	173	174	453	453
Bladder	299	295	101	96	400	391
Pancreas	171	175	161	162	332	337
Leukaemia	218	223	147	148	365	371
Ovary	–	–	349	358	349	358
Oesophagus	194	199	102	99	296	298
Kidney	211	227	103	106	314	333
Brain and meninges	153	155	107	108	260	263
Womb	–	–	252	263	252	263
Myeloma	95	95	67	65	162	160
Head and neck	182	178	66	65	248	243
Other	1,550	1,573	2,912	3,017	4,462	4,590
<b>Total</b>	<b>10,047</b>	<b>10,226</b>	<b>10,836</b>	<b>11,077</b>	<b>20,883</b>	<b>21,303</b>

Source: National Cancer Register

TABLE 4.16

**Table 4.17 Persons killed and injured on roads**

Year	Number		
	Number killed	Number of injuries	Total
1992	415	10,188	10,603
1993	431	9,831	10,262
1994	404	10,229	10,633
1995	437	12,673	13,110
1996	453	13,319	13,772
1997	472	13,115	13,587
1998	458	12,773	13,231
1999	413	12,340	12,753
2000	415	12,043	12,458
2001	411	10,222	10,633
2002	376	9,206	9,582

Source: National Roads Authority

TABLE 4.17

**Table 4.18 Road casualties classified by road user type, 2002**

Persons

Casualty type	Killed	Serious injury	Minor injury	Total
Pedestrians	86	179	921	1,186
Pedal cycle users	18	18	254	290
Motor cycle users	44	124	847	1,015
Car users	200	728	5,092	6,020
P.S.V. (large) users	1	2	57	60
Goods vehicle users	20	73	456	549
Other or unknown	7	26	167	200
<b>Total</b>	<b>376</b>	<b>1,150</b>	<b>7,794</b>	<b>9,320</b>

Source: National Roads Authority

**Table 4.19 Road casualties classified by age and sex, 2002**

Persons

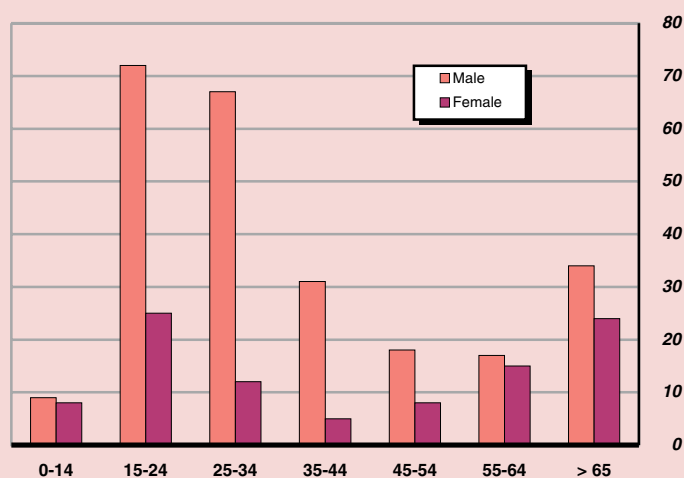
Age group	Male		Female		Persons	
	Killed	Injured	Killed	Injured	Total	%
0-5	3	86	3	48	140	1.7
6-9	3	105	1	75	184	2.2
10-14	3	157	4	100	264	3.1
15-17	11	256	8	128	403	4.8
18-20	26	504	7	242	779	9.2
21-24	35	622	10	409	1,076	12.8
25-34	67	1,166	12	752	1,997	23.7
35-44	31	663	5	501	1,200	14.2
45-54	18	443	8	387	856	10.1
55-64	17	272	15	223	527	6.2
65 and over	34	246	24	222	526	6.2
Unknown	12	276	4	190	482	5.7
<b>Total</b>	<b>260</b>	<b>4,796</b>	<b>101</b>	<b>3,277</b>	<b>8,434</b>	<b>100.0</b>

Source: National Roads Authority

TABLE 4.18

TABLE 4.19

**Road deaths by age group, 2002**



**Table 4.20 Fatal accidents reported to the Health and Safety Authority**

Work sector	Number					
	1998	1999	2000	2001	2002	2003
Agricultural, hunting and forestry	26	23	16	24	13	19
Fishing (diving)	6	2	7	2	3	0
Mining and quarrying	1	3	3	5	2	1
Manufacturing	4	8	9	3	7	6
Electricity, gas and water supply	0	0	1	0	2	2
Construction	22	18	18	18	21	17
Wholesale and retail trade: repair of motor vehicles, motorcycles; personal and household goods	1	1	3	1	1	5
Hotels and restaurants	1	0	0	0	0	0
Transport, storage and communications	4	8	4	5	8	7
Financial intermediation	0	0	0	0	0	0
Real estate, renting and business activities	1	2	3	3	1	0
Public administration and defence; compulsory and social security	1	2	5	2	2	4
Education	2	0	0	0	0	0
Health and social work	0	1	0	1	0	0
Other community, social and personal service activities	1	1	1	0	1	4
<b>Total</b>	<b>70</b>	<b>69</b>	<b>70</b>	<b>64</b>	<b>61</b>	<b>65</b>

Source: Health and Safety Authority – Annual Report

**Principal causes of fires attended by brigades**

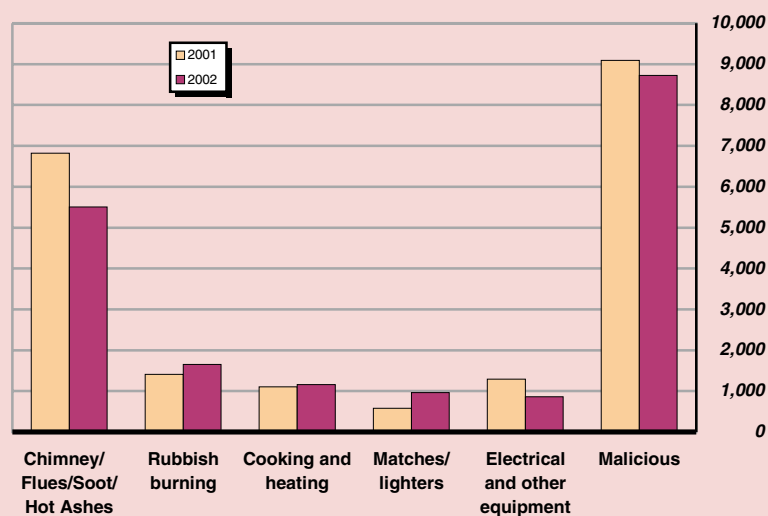


TABLE 4.20

**Table 4.21 Causes of fires attended by brigades**

Cause of fire	Number attended			
	1999	2000	2001	2002
Chimney/flues/soot/hot ashes	7,527	6,671	6,817	5,509
Matches/cigarette lighters	345	217	581	966
Rubbish burning	1,545	1,443	1,413	1,649
Cooking and heating	1,255	1,107	1,101	1,156
Electrical and other equipment	882	1,014	1,290	858
Electrical wiring installations	437	474	440	406
Malicious	6,717	9,028	9,089	8,720
Smoking materials	230	191	240	256
Using fuels to kindle fires	35	30	32	60
Explosions	32	14	53	31
Other suspected causes	555	775	1,163	698
Unknown causes	10,650	10,474	10,601	7,790
<b>Total</b>	<b>30,210</b>	<b>31,438</b>	<b>32,820</b>	<b>28,099</b>

Source: Department of Environment, Heritage and Local Government

**Table 4.22 Deaths due to fire**

Year	Number
	Fatalities
1990	39
1991	52
1992	48
1993	51
1994	42
1995	38
1996	52
1997	51
1998	45
1999	51
2000	43
2001	63
2002	51
2003	37

Source: Department of Environment, Heritage and Local Government

**Deaths due to fire**

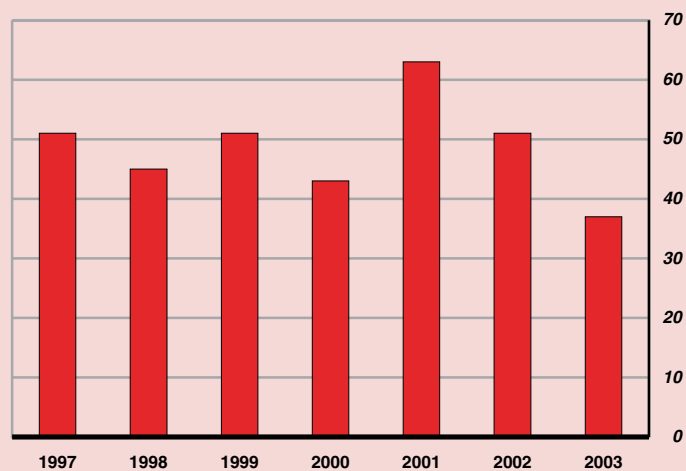


TABLE 4.21

TABLE 4.22

**Table 4.23 Number on register of Dáil Electors**

	<i>Number</i>						
<b>Local Authorities</b>	<b>1998</b>	<b>1999</b>	<b>2000</b>	<b>2001</b>	<b>2002</b>	<b>2003</b>	<b>2004</b>
<b>County Councils</b>	<b>2,221,733</b>	<b>2,259,649</b>	<b>2,318,730</b>	<b>2,358,805</b>	<b>2,411,793</b>	<b>2,470,641</b>	<b>2,536,721</b>
Carlow	33,297	34,169	35,179	36,054	37,008	37,651	38,143
Cavan	42,652	43,197	43,949	44,393	44,977	45,651	47,496
Clare	74,545	76,390	78,978	80,266	81,628	81,805	84,834
Cork	229,204	235,165	243,365	248,656	254,405	262,139	270,557
Donegal	103,542	105,538	106,941	108,147	110,720	113,860	116,966
Dún Laoghaire-Rathdown	148,189	148,212	148,047	148,350	149,252	150,028	150,499
Fingal	119,778	122,977	126,888	130,676	134,478	137,694	140,829
South Dublin	157,711	161,387	164,805	168,494	171,578	175,478	176,443
Galway	102,945	104,206	107,756	109,673	112,334	115,841	120,375
Kerry	100,712	101,776	102,870	104,096	105,520	107,002	108,687
Kildare	102,564	103,520	107,985	110,995	114,591	121,601	128,346
Kilkenny	56,234	57,402	58,821	59,759	61,080	62,955	64,570
Laois	39,359	40,922	42,367	43,246	44,610	45,749	47,000
Leitrim	21,200	21,332	21,945	21,914	22,246	22,688	23,331
Limerick	86,234	86,716	88,793	89,826	91,888	94,580	95,059
Longford	23,927	24,529	25,111	25,252	25,732	26,331	27,313
Louth	72,260	74,069	76,093	78,209	80,924	81,328	82,838
Mayo	87,118	88,041	90,533	91,104	92,656	95,229	98,278
Meath	92,326	94,860	98,346	102,329	107,894	110,270	117,254
Monaghan	40,581	41,237	41,378	41,601	42,110	43,356	44,173
Offaly	45,416	46,304	47,525	48,128	49,486	50,731	52,332
Roscommon	40,511	41,188	42,412	42,715	43,440	44,275	46,039
Sligo	43,712	43,876	45,087	45,441	46,150	46,090	47,493
North Tipperary	46,000	46,642	48,128	48,798	49,718	51,114	51,740
South Tipperary	58,292	58,599	60,162	60,676	61,508	62,709	62,265
Waterford	41,621	42,318	43,473	43,832	44,497	44,995	46,329
Westmeath	48,496	49,288	51,348	51,939	53,202	55,646	58,232
Wexford	84,694	85,635	88,195	91,049	93,280	95,983	99,830
Wicklow	78,613	80,154	82,250	83,187	84,881	87,862	89,470
<b>City Councils</b>	<b>546,074</b>	<b>554,087</b>	<b>550,678</b>	<b>535,339</b>	<b>540,607</b>	<b>543,726</b>	<b>541,005</b>
Cork	92,126	91,675	92,209	90,455	90,169	90,219	89,504
Dublin	347,772	355,807	351,054	337,538	342,409	344,019	341,813
Galway	38,643	39,111	39,726	40,088	40,414	41,947	42,325
Limerick	37,697	37,878	37,623	37,251	37,359	37,681	37,741
Waterford	29,836	29,616	30,066	30,007	30,256	29,860	29,622
<b>Total</b>	<b>2,767,807</b>	<b>2,813,736</b>	<b>2,869,408</b>	<b>2,894,144</b>	<b>2,952,400</b>	<b>3,014,367</b>	<b>3,077,726</b>

Source: Department of Environment, Heritage and Local Government, Franchise Section



**Table 4.24** Votes recorded at Dáil elections

<b>Date of election</b>	<b>Numbers entitled to vote</b>	<b>Votes recorded</b>	<b>Votes recorded as percentage of numbers entitled to vote</b>
February 1948	1,800,210	1,336,628	74.2
May 1951	1,785,144	1,343,616	75.3
May 1954	1,763,828	1,347,932	76.4
March 1957	1,738,278	1,238,559	71.3
October 1961	1,670,860	1,179,738	70.6
April 1965	1,683,019	1,264,415	75.1
June 1969	1,735,388	1,334,963	76.9
February 1973	1,783,604	1,366,474	76.6
June 1977	2,118,606	1,616,770	76.3
June 1981	2,275,450	1,734,379	76.2
February 1982	2,275,450	1,679,500	73.8
November 1982	2,335,153	1,701,385	72.9
February 1987	2,445,515	1,793,406	73.3
June 1989	2,448,810	1,677,592	68.5
November 1992	2,557,036	1,751,351	68.5
June 1997	2,741,262	1,806,932	65.9
May 2002	3,002,173	1,878,609	62.6

Source: Department of Environment, Heritage and Local Government, Franchise Section

