

Health and Social Conditions

4

Introductory text and technical notes	73
Table 4.1 Expenditure on Social Welfare	77
Table 4.2 Index of rates of payment for long-term unemployed, CPI and gross average industrial earnings	77
Table 4.3 Recipients of weekly Social Welfare payments by programme	78
Graph <i>Proportion of recipients of weekly Social Welfare payments by programme, 2002</i>	78
Table 4.4 Recipients of Social Welfare payments by county, 2002	79
Table 4.5 Expenditure on Social Welfare by scheme	80-81
Table 4.6 Financing of Social Welfare expenditure	82
Table 4.7 Recipients by type of Old Age Pension	82
Table 4.8 Recipients and cost of Child Benefit	83
Graph <i>Number of families in receipt of Child Benefit by number of eligible children</i>	83
Table 4.9 Recipients of Illness, Disability and Caring payments by type	84
Table 4.10 Recipients of Unemployment and Employment supports by type of payment	84
Graph <i>Number of recipients of Unemployment Supports</i>	84
Table 4.11 Estimated non-capital health expenditure by programme and service	85
Table 4.12 Payments by General Medical Services (Payments) Board	85

Table 4.13	Publicly funded acute hospitals statistics, 2000	86
Table 4.14	Psychiatric hospitals and units: in-patients at 31 December	86
Graph	<i>GMS(P)B Payments to Pharmacists, Doctors and Dentists</i>	86
Table 4.15	HIV positive antibody results	87
Graph	<i>Cases of and deaths from AIDS</i>	87
Table 4.16	Main sites of occurrence of new cancers diagnosed	88
Table 4.17	Regular daily smokers in the population aged over 15 years	89
Table 4.18	Persons killed and injured on roads	89
Table 4.19	Road casualties classified by road user type, 2001	89
Table 4.20	Road casualties classified by age and sex, 2001	90
Graph	<i>Road deaths by age group, 2001</i>	90
Table 4.21	Fatal accidents reported to the Health and Safety Authority	91
Graph	<i>Principal causes of fires attended by brigades</i>	91
Table 4.22	Causes of fires attended by brigades	92
Table 4.23	Deaths due to fire	92
Graph	<i>Deaths due to fire</i>	92
Table 4.24	Number on register of Dáil Electors	93
Table 4.25	Votes recorded at Dáil elections	94

4

Health & Social Conditions

- Social Welfare expenditure fell from 11.9% of GNP in 1993 to 9.1% in 2002.
- Health and Social Welfare represented 76% of net current government expenditure in 2002.
- 64% of total General Medical Services (Payment) Board payments went to Pharmacists in 2002.
- 34% of fatal accidents at work in 2002 were in construction.

Introduction

The statistics in this chapter relate to Social Services, Health Services, Accidents, and the Register of Electors. They have been obtained from a range of administrative sources. The information on social services provides details on Social Welfare expenditure, and recipients of Social Welfare payments. The information on Health includes details on expenditure, hospital admissions and discharges and incidence of certain diseases. Data on accidents comes from both the Health and Safety Authority, in respect of accidents at work and the National Roads Authority, regarding road accidents. Data on incidence and causes of fires is obtained from the Department of the Environment and Local Government.

Social Services

The data provide a reflection of economic and social change. After a decline in unemployment during the late 1990s, the changed economic situation is reflected in the overall increase in the number of Unemployment Assistance and Unemployment Benefit recipients, with the 2002 figure of 137,982 representing a 19% increase on the total recorded in 2000, although still well below the 1998 figure. A total of 938,971 people were in receipt of a weekly social welfare payment at the end of 2002.

From 1998 to 2002, there had been an increase of 58% in expenditure on social welfare payments. As a percentage of gross current government expenditure, the total came from a low of 25.9% in 2000 to 28.8% in 2002. As a proportion of Gross National Product (GNP), total Social Welfare expenditure fell from 11.9% in 1993 to 9.1% in 2002.

In 2002, the main areas of expenditure by programme group were: Old Age (25%), Widows, Widowers & One Parent Families (18%), Child Related (17%) and Illness Disability and Caring (16%). The administration of the social welfare system accounted for 4.4% of total expenditure.

Health

The general hospital programme was by far the largest area of non-capital health expenditure, amounting to 48% of gross expenditure in 2002. Other significant areas of expenditure were the community health services and programmes for people with disabilities, which respectively account for 17% and 12% of gross expenditure.

Table 4.5

Widowed Parent Grant was introduced in December 1999.

Carer's Benefit was introduced in October 2000.

Farm Assist was introduced in April 1999.

The 2000 out-turn excludes a payment of £120 million from the Social Insurance fund to the National Training Fund, which was established at end-2000. From 2001, this fund (which is under the aegis of the Department of the Tanaiste, Enterprise, Trade and Employment) is being financed by way of a new National Training Fund Levy.

Table 4.6

Payment to National Training Fund 2000 – see note to Table 4.5

Table 4.9

Carer's Benefit was introduced in October 2000.

There were also 53 persons in receipt of Prescribed Relatives Allowance at the end of December 2000. This allowance was replaced by Carer's Allowance in 1990.

Disablement Pension is paid where a person suffers loss of physical or mental faculty as a result of an accident at work or contracting an occupational disease. It can be paid in addition to other Social Welfare payments such as Disability Benefit and Invalidity Pension and can also be paid where a person continues to work.

Table 4.10

The figures for Back to Work Allowance and Back to Work Enterprise Allowance recipients for 2001 and 2002 are not comparable with earlier years; this is due to a revision in recording procedure. Total figures between the two schemes are comparable.

Farm Assist was introduced in April 1999 and replaced the Smallholders Unemployment Assistance Scheme. The great majority of recipients of the Smallholders Unemployment Assistance Scheme transferred to Farm Assist during the period 1999 to 2000.

Table 4.13

District hospitals are not included in this table.

Figures for Average Number of In-Patient / Day Beds Available, refer to the average number of beds available for use during the year, taking beds that have been temporarily closed or opened into account.

The Average Length of Stay calculations for area and national totals, exclude Incorporated Orthopaedic, NRH, Peamount, Baldoyle and Manorhamilton because of the nature of their specialities which involve substantially longer stays than in acute hospitals generally.

Table 4.14

The figure for the Eastern region includes the Central Mental Hospital and does not include St. Joseph's Intellectual Disability Services at St. Ita's Hospital.

Table 4.15

These figures are produced by the Virus Reference Laboratory and relate to categories of persons as identified either by the patients themselves or by their clinicians. The headings Transfusion, Blood Donors, Organ Donors and Prisoners are categorised by site reason rather than risk.

Table 4.1 Expenditure on Social Welfare

Year	Total Social Welfare expenditure	Index of expenditure	Social Welfare expenditure as a percentage of:			
			Gross current government expenditure	Net current government expenditure	Gross National Product	Gross Domestic Product
	€m	Base 1993=100	%	%	%	%
1993	4,607	100.0	27.9	34.5	11.9	10.7
1994	4,775	103.6	27.4	33.7	11.4	10.3
1995	5,332	115.7	28.7	34.7	11.4	10.1
1996	5,558	120.6	28.5	34.5	10.8	9.6
1997	5,744	124.7	26.7	32.3	9.7	8.6
1998	6,046	131.2	27.1	33.1	8.9	7.8
1999	6,283	136.4	26.0	31.9	8.3	7.1
2000	6,713	145.7	25.9	32.3	7.7	6.5
2001	7,842	170.2	26.2	38.4	8.1	6.9
2002	9,520	206.6	28.8	40.8	9.1	7.3

Source: Department of Social and Family Affairs - Statistical Information on Social Welfare Services

Table 4.2 Index of rates of payment for long-term unemployed, CPI and gross average industrial earnings

Base year 1993=100

Year	Long-term unemployed				Consumer Price Index	Gross average industrial earnings
	Single person	Couple	Couple with two children including Child Benefit	Couple with four children including Child Benefit		
1993	100.0	100.0	100.0	100.0	100.0	100.0
1994	103.0	103.1	102.9	103.0	102.4	102.8
1995	105.6	105.6	107.2	109.1	104.9	104.9
1996	109.0	108.8	110.2	112.0	106.6	109.9
1997	114.0	113.5	114.1	116.4	108.3	113.4
1998	119.1	118.0	117.8	120.2	110.8	118.3
1999	124.2	123.2	122.8	125.2	112.7	124.9
2000	130.9	131.5	131.6	135.0	119.0	133.2
2001	144.4	147.3	152.1	159.4	124.7	143.9
2002	158.0	164.3	173.6	184.7	130.5	153.3

Source: Department of Social and Family Affairs - Statistical Information on Social Welfare Services

Table 4.3 Recipients of weekly Social Welfare payments by programme

Programme	Number				
	1998	1999	2000	2001	2002
Old Age	256,809	261,281	267,760	276,065	287,395
Widows, Widowers and One Parent Families	198,094	203,091	206,130	209,011	211,385
Child Related	6,900	7,640	8,067	12,134	12,696
Illness, Disability and Caring	161,588	172,104	181,569	193,536	206,137
Unemployment Supports	182,087	149,705	116,069	126,447	137,982
Employment Supports	55,885	65,120	64,833	56,582	50,920
Supplementary Welfare Allowance	16,300	21,269	25,094	29,167	32,073
Miscellaneous	586	548	472	433	383
Total Recipients	878,249	880,758	869,994	903,375	938,971

Source: Department of Social and Family Affairs - Statistical Information on Social Welfare Services

Proportion of recipients of weekly Social Welfare payments by programme, 2002

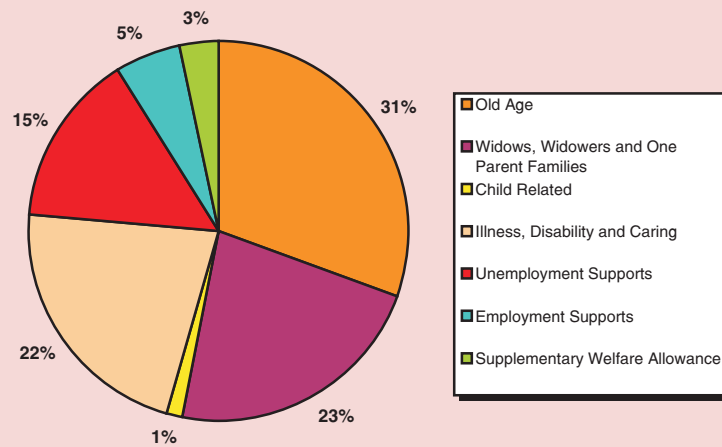


Table 4.4 Recipients of Social Welfare payments by county, 2002¹

County	Number						
	Old Age	Widows, Widowers and One Parent Families	Child Related	Illness, Disability and Caring	Live Register	Employment Supports	Supplementary Welfare Allowance
Carlow	3,216	2,640	167	3,144	2,079	743	525
Cavan	4,836	2,801	159	2,807	2,002	842	270
Clare	7,192	4,679	296	4,475	4,058	1,460	771
Cork	30,457	22,526	1,538	26,106	17,456	4,811	3,044
Donegal	11,204	7,325	384	8,856	9,897	3,962	834
Dublin	69,965	62,616	3,818	54,323	41,455	10,993	11,835
Galway	14,194	9,604	593	9,867	9,403	3,446	2,350
Kerry	10,106	6,494	387	6,898	6,704	2,200	999
Kildare	6,340	6,870	640	6,967	4,362	1,305	1,088
Kilkenny	5,195	3,337	240	3,663	2,467	833	561
Laois	3,794	2,626	156	2,525	2,049	586	385
Leitrim	2,625	1,462	74	1,835	1,247	620	101
Limerick	11,699	9,542	512	11,224	8,281	1,799	1,246
Longford	2,729	1,962	99	2,152	1,810	627	349
Louth	7,407	6,212	355	7,108	7,559	1,520	1,358
Mayo	10,374	6,086	296	6,988	6,342	3,158	778
Meath	6,771	5,247	489	5,363	2,844	907	918
Monaghan	4,142	2,620	154	2,839	2,521	1,161	250
Offaly	4,252	3,138	178	3,534	2,640	680	276
Roscommon	4,665	2,439	125	2,791	1,513	823	287
Sligo	4,530	3,060	171	3,273	2,388	1,014	191
Tipperary	11,129	7,784	439	7,811	6,286	1,916	922
Waterford	7,145	5,865	341	5,306	6,074	1,321	971
Westmeath	4,762	4,085	250	3,776	3,305	929	510
Wexford	8,548	6,824	330	6,233	7,058	1,813	735
Wicklow	6,746	6,015	407	5,404	4,342	1,306	519
Other	23,372	7,526	98	869	–	145	–
Total	287,395	211,385	12,696	206,137	166,142	50,920	32,073

¹ Estimated

Source: Department of Social and Family Affairs - Statistical Information on Social Welfare Services

TABLE 4.4

Table 4.5 Expenditure on Social Welfare by scheme

	€m				
Scheme	1998	1999	2000	2001	2002 ¹
Old Age	1,425.5	1,525.5	1,707.0	1,987.5	2,296.4
Old Age (Contributory) Pension	461.0	498.1	577.4	716.6	868.6
Retirement Pension	463.5	511.5	594.2	697.4	803.4
Old Age (Non-contributory) Pension	424.6	439.4	456.2	490.7	537.3
Pre-Retirement Allowance	76.4	76.5	79.3	82.8	87.0
Widows, Widowers and One Parent Families	1,088.5	1,165.7	1,265.8	1,413.0	1,592.5
Widow/Widower's (Contributory) Pension	517.5	547.8	597.4	673.0	761.5
Widow/Widower's (Non-contributory) Pension	84.1	88.4	94.9	107.2	116.5
Deserted Wife's Benefit	88.6	86.0	83.9	84.9	88.2
Deserted Wife's Allowance	8.5	8.4	8.4	9.2	10.2
Prisoner's Wife's Allowance	0.0	0.0	0.0	0.0	0.0
One Parent Family Payment	389.9	435.2	480.1	537.4	613.0
Widowed Parent Grant (Contributory/Non-contributory)			1.1	1.4	3.0
Child Related	584.8	623.6	703.9	1,058.1	1,578.8
Maternity Benefit	48.5	52.7	58.0	78.9	99.1
Health and Safety Benefit	0.1	0.2	0.2	0.2	0.2
Adoptive Benefit	0.2	0.2	0.2	0.3	0.6
Orphan's (Contributory) Allowance	3.0	3.7	5.6	9.4	11.6
Orphan's (Non-contributory) Pension	1.3	1.8	2.4	4.4	4.5
Child Benefit	531.7	565.0	637.5	964.8	1,462.8
Illness, Disability and Caring	855.6	935.4	1,048.6	1,233.1	1,453.6
Disability Benefit	241.4	262.7	280.8	329.9	385.4
Invalidity Pension	264.3	279.6	311.4	354.5	403.6
Carer's Benefit			0.0	2.5	5.8
Injury Benefit	9.0	9.3	9.8	10.9	11.8
Disablement Benefit	48.1	49.4	50.7	54.3	59.4
Death Benefit	4.1	4.4	4.7	5.1	5.6
Disability Allowance	219.6	245.2	279.2	332.3	407.6
Medical Care	0.2	0.2	0.2	0.2	0.2
Carer's Allowance	57.3	72.9	99.6	130.3	160.0
Blind Person's Pension	11.7	11.8	12.3	13.2	14.2
Unemployment Supports	1,070.5	909.4	734.3	720.6	935.4
Unemployment Benefit	300.5	293.8	265.2	290.7	423.5
Unemployment Assistance	770.0	615.6	469.1	429.9	512.0
Employment Supports	200.2	251.1	285.3	283.7	269.1
Family Income Supplement	36.4	41.1	39.4	37.1	42.4
Employment Support Services	163.8	190.1	204.5	196.0	168.1
Farm Assist/Smallholders	0.0	19.9	41.4	50.7	58.6

Table 4.5 Expenditure on Social Welfare by scheme (continued)

	€m				
Scheme	1998	1999	2000	2001	2002 ¹
Supplementary Welfare Allowance and Miscellaneous	525.5	561.8	645.2	772.2	973.7
Supplementary Welfare Allowance	223.1	239.7	294.9	363.6	484.9
Treatment Benefit	39.2	45.2	57.8	56.5	60.8
Rent Allowance	0.8	0.8	0.8	0.7	0.7
Free Schemes	194.7	196.8	204.3	241.0	296.0
Miscellaneous	39.5	50.1	64.3	76.9	69.6
Equal Treatment Payments	9.0	4.1	0.3	0.1	0.0
Redundancy and Insolvency	19.2	25.0	22.9	33.4	61.6
Total	5,750.7	5,972.5	6,390.2	7,468.1	9,099.6
Administration	296.2	309.7	323.1	374.7	420.1
Total expenditure	6,046.8	6,282.2	6,713.3	7,842.9	9,519.7

¹ Provisional

Source: Department of Social and Family Affairs - Statistical Information on Social Welfare Services

TABLE 4.5

Table 4.6 Financing of Social Welfare expenditure

	%				
Source	1998	1999	2000	2001	2002 ¹
Social Welfare expenditure					
State	56.0	54.7	52.7	52.7	53.7
Employers	33.2	37.1	41.2	41.5	37.0
Employees	9.0	9.9	11.1	10.5	10.2
Self-employed	2.7	3.3	2.8	2.4	2.7
National Lottery	0.2	0.5	0.5	0.5	0.3
Other receipts including investment income	0.0	0.1	0.4	0.6	0.5
Social insurance fund surplus	-1.1	-5.4	-6.5	-8.0	-4.4
Payment to the National Training Fund	0.0	0.0	-2.3	0.0	0.0
Total %	100.0	100.0	100.0	100.0	100.0
Total Expenditure (€m)	6,046.8	6,282.2	6,713.3	7,842.9	9,519.7

¹ Provisional

Source: Department of Social and Family Affairs - Statistical Information on Social Welfare Services

Table 4.7 Recipients by type of Old Age Pension

	Number				
Year	Old Age (contributory) Pension	Retirement Pension	Old Age (non-contributory) Pension	Pre- retirement Allowance	Total
1993	71,861	58,400	111,011	15,882	257,154
1994	70,820	62,211	108,301	15,284	256,616
1995	69,179	65,761	102,984	15,023	252,947
1996	67,988	69,740	101,624	14,151	253,503
1997	70,022	71,793	98,835	13,647	254,297
1998	71,706	75,316	95,890	13,897	256,809
1999	76,241	78,868	93,023	13,149	261,281
2000	86,217	78,370	90,652	12,521	267,760
2001	94,871	80,326	89,061	11,807	276,065
2002	105,295	83,055	87,823	11,222	287,395

Source: Department of Social and Family Affairs - Statistical Information on Social Welfare Services

Table 4.8 Recipients and cost of Child Benefit

Eligible children in family	Recipient families				
	1998	1999	2000	2001	2002
1	190,083	197,457	203,342	208,712	214,916
2	169,509	170,777	171,646	173,525	176,284
3	93,671	92,172	90,667	89,564	89,397
4	35,932	33,979	32,431	31,225	30,552
5	10,592	9,651	8,795	8,257	7,884
6	3,304	2,965	2,628	2,450	2,275
7	1,071	980	869	742	712
8	401	324	294	287	267
9	145	107	89	94	95
10	57	56	48	39	36
11	22	22	20	16	15
12	16	11	7	6	7
13	6	2	3	1	0
14	2	1	1	1	1
15	0	0	0	0	0
Total families	504,811	508,504	510,840	514,919	522,441
Total children	1,039,746	1,028,877	1,018,175	1,014,340	1,019,551
Total cost of Child Benefit (€m)	531.7	565.0	637.5	964.8	1,462.8

Source: Department of Social and Family Affairs - Statistical Information on Social Welfare Services

TABLE 4.8

Number of families in receipt of Child Benefit by number of eligible children

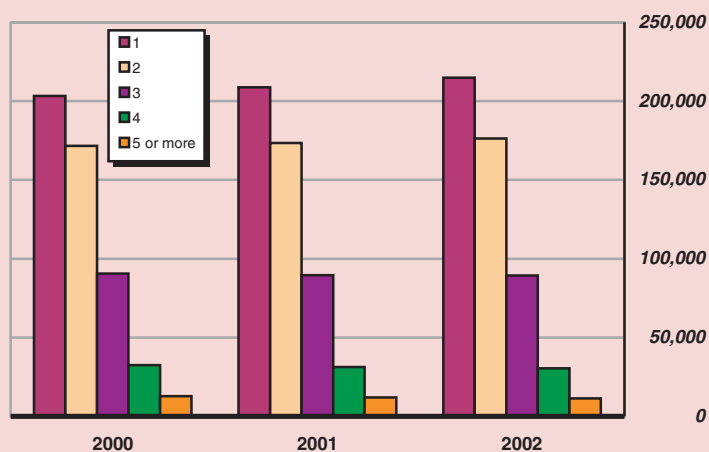


Table 4.9 Recipients of Illness, Disability and Caring payments by type

Payment type	Number				
	1998	1999	2000	2001	2002
Disability Benefit	43,766	45,535	46,940	50,715	54,590
Invalidity Pension	44,925	46,946	48,663	50,615	52,147
Interim Disability Benefit	439	514	488	449	404
Carer's Benefit	–	–	50	425	615
Disability Allowance	47,126	50,431	54,303	57,655	62,783
Carer's Allowance	11,416	14,387	16,478	18,785	20,395
Blind Person's Pension	2,358	2,304	2,229	2,125	2,095
Injury Benefit	746	748	828	861	828
Death Benefit Pension	630	662	665	676	668
Disablement Pension	10,182	10,577	10,925	11,230	11,612
Total	161,588	172,104	181,569	193,536	206,137

Source: Department of Social and Family Affairs - Statistical Information on Social Welfare Services

Table 4.10 Recipients of Unemployment and Employment supports by type of payment

Payment type	Number				
	1998	1999	2000	2001	2002
Total Recipients Unemployment Supports	182,087	149,705	116,069	126,447	137,982
Unemployment Benefit	61,591	56,576	46,565	59,884	66,416
Unemployment Assistance	120,496	93,129	69,504	66,563	71,566
Total Recipients Employment Supports	55,885	65,120	64,833	56,892	50,920
Back to Work Allowance	24,128	31,931	34,506	16,218	11,496
Back to Work Enterprise Allowance	7,431	5,681	4,503	15,973	13,490
Back to Education Allowance	4,139	4,518	4,237	4,101	5,041
Part-time Job Incentive Scheme	568	567	474	340	336
Family Income Supplement	13,143	14,549	13,062	11,880	12,043
Farm Assist/Smallholders	6,476	7,874	8,051	8,380	8,514

Source: Department of Social and Family Affairs - Statistical Information on Social Welfare Services

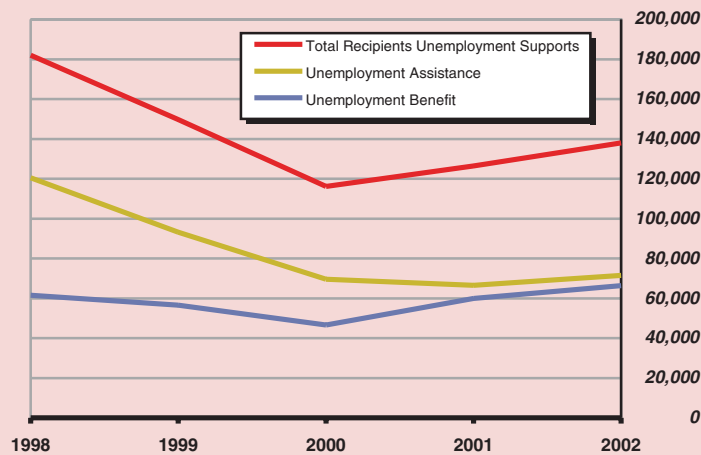
Number of recipients of Unemployment Supports

Table 4.11 Estimated non-capital health expenditure by programme and service

	€m				
Programme	1998	1999	2000	2001¹	2002²
Community Protection Programme	99.9	136.0	224.8	314.3	275.4
Community Health Services Programme	687.2	883.5	985.0	1,191.6	1,331.8
Community Welfare Programme	285.5	336.5	441.3	581.4	709.8
Psychiatric Programme	347.5	394.5	433.7	497.1	570.3
Programme for the disabled	436.6	520.8	651.6	815.9	969.1
General Hospital Programme	1,988.5	2,317.7	2,604.5	3,291.4	3,832.2
General Support Programme	194.8	218.1	264.9	318.3	339.4
Gross Total	4,040.0	4,807.3	5,605.8	7,010.1	8,028.0
Total Non-Capital Income	220.9	233.4	251.3	270.8	293.6
Net Total	3,819.1	4,573.9	5,354.5	6,739.3	7,734.3

¹ Provisional outturn² Estimated

Source: Department of Health and Children – Health Statistics

TABLE 4.11

Table 4.12 Payments by General Medical Services (Payments) Board

	€m				
Category	1998	1999	2000	2001	2002
Doctors	158.3	154.8	169.9	211.8	282.1
Pharmacists	350.4	417.2	527.6	670.9	813.2
Dentists	18.1	18.3	38.1	41.7	45.7
General Practice development	8.8	9.3	10.2	11.6	17.6
High tech drugs scheme	34.4	42.3	51.9	65.1	84.6
Optometrists	–	1.8	8.7	9.8	13.9
Administration	8.5	9.3	11.8	12.7	13.7
Total	578.6	653.0	818.2	1,023.6	1,270.9

Source: General Medical Services Report

TABLE 4.12

Table 4.13 Publicly funded acute hospitals statistics, 2000

Health Board area	Number of hospitals	Average number of in-patient beds available	In-patients discharged/deaths	Average length of stay in days	Average number of day beds available	Day cases
Eastern	23	4,894	189,633	7.7	351	156,153
Midland	3	470	29,817	5.0	37	10,525
Mid-Western	6	739	42,313	5.9	57	20,128
North-Eastern	5	866	45,628	5.3	69	16,469
North-Western	3	694	35,691	5.3	20	22,921
South-Eastern	6	1,151	63,662	5.3	55	25,034
Southern	9	1,824	82,199	6.5	77	42,413
Western	5	1,253	62,891	6.0	55	30,861
Total	60	11,891	551,834	6.4	721	324,504

Source: Department of Health and Children - Health Statistics

TABLE 4.13

TABLE 4.14

Table 4.14 Psychiatric hospitals and units: in-patients at 31 December

Health Board area	1997	1998	1999	2000	2001
Eastern	1,404	1,419	1,324	1,273	1,244
Midland	336	303	278	281	271
Mid-Western	434	429	427	424	383
North-Eastern	277	260	229	197	194
North-Western	192	191	166	141	141
South-Eastern	802	828	762	770	684
Southern	725	772	716	639	634
Western	650	618	567	505	454
Total	4,820	4,820	4,469	4,230	4,005

Source: Department of Health and Children - Health Statistics

GMS(P)B Payments to Pharmacists, Doctors and Dentists

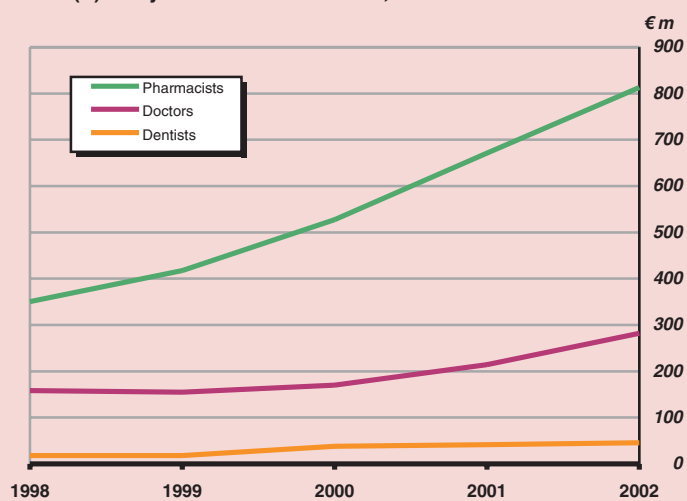


Table 4.15 HIV positive antibody results

Category	Cases				
	1996	1997	1998	1999	2000
Intravenous Drug Users	20	21	26	69	83
Children at Risk	n/a	n/a	n/a	n/a	n/a
Homosexuals/bisexuals	41	37	37	40	72
Haemophiliacs	n/a	n/a	n/a	n/a	n/a
Haemophiliac Contacts	1	1	0	1	0
Hospital Staff/Occupational Hazard/Needlestick	0	3	0	2	0
Transfusion	2	1	1	0	1
Blood Donors (specimens referred by BTSB)	5	1	2	1	1
Organ Donors	0	0	0	1	0
Prisoners	2	5	3	13	0
Heterosexuals/Risk Unspecified	27	40	47	59	127
Total	98	109	116	186	284

Source: Department of Health and Children - Health Statistics

Cases of and deaths from AIDS

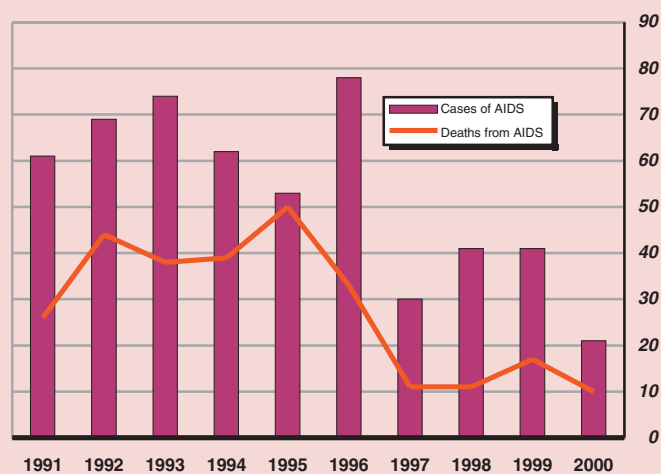


TABLE 4.15

Table 4.16 Main sites of occurrence of new cancers diagnosed

Cancer site	Cases					
	Male		Female		Total	
	1996	1997	1996	1997	1996	1997
Non-melanoma skin	3,509	3,695	2,831	3,008	6,340	6,703
Colorectal	990	1,009	700	775	1,690	1,784
Breast	17	17	1,685	1,704	1,702	1,721
Lung	959	908	494	509	1,453	1,417
Prostate	1,152	1,130	–	–	1,152	1,130
Carcinoma of skin	328	364	705	743	1,033	1,107
Cervix	–	–	1,017	965	1,017	965
Melanoma of skin	192	232	340	385	532	617
Lymphoma	250	262	211	230	461	492
Stomach	306	297	173	173	479	470
Bladder	344	332	132	122	476	454
Pancreas	159	173	171	169	330	342
Leukaemia	189	195	137	144	326	339
Ovary	–	–	290	306	290	306
Oesophagus	188	195	110	99	298	294
Kidney	146	174	90	82	236	256
Brain	136	145	111	102	247	247
Womb	–	–	214	218	214	218
Other	1,414	1,418	1,175	1,170	2,589	2,588
Total	10,279	10,546	10,586	10,904	20,865	21,450

Source: Department of Health and Children - Health Statistics

Table 4.17 Regular daily smokers in the population aged over 15 years

%			
Year	Male	Female	Total
1985	37	32	35
1986	36	32	34
1987	34	31	32
1988	30	27	29
1989	32	27	30
1990	31	29	30
1991	30	27	28
1992	30	30	30
1993	31	26	28
1994	28	29	29
1995	31	28	29
1996	n/a	n/a	n/a
1997	n/a	n/a	n/a
1998	32	31	31

Source: Department of Health and Children - Health Statistics

Table 4.18 Persons killed and injured on roads

Number			
Year	Number killed	Number of injuries	Total
1992	415	10,188	10,603
1993	431	9,831	10,262
1994	404	10,229	10,633
1995	437	12,673	13,110
1996	453	13,319	13,772
1997	472	13,115	13,587
1998	458	12,773	13,231
1999	413	12,340	12,753
2000	415	12,043	12,458
2001	411	10,222	10,633

Source: National Roads Authority - Road Accident Facts

Table 4.19 Road casualties classified by road user type, 2001

Persons				
Casualty type	Killed	Serious injury	Minor injury	Total
Pedestrians	89	167	932	1,188
Pedal cycle users	12	42	305	359
Motor cycle users	50	181	840	1,071
Car users	230	900	5,624	6,754
P.S.V. (large) users	-	11	131	142
Goods vehicle users	26	101	487	614
Other or unknown	4	15	81	100
Total	411	1,417	8,400	10,228

Source: National Roads Authority - Road Accident Facts

TABLE 4.17

TABLE 4.18

TABLE 4.19

Table 4.20 Road casualties classified by age and sex, 2001

Age group	Persons					
	Male		Female		Persons	
	Killed	Injured	Killed	Injured	Total	%
0-5	6	120	4	79	209	2.2
6-9	4	106	1	85	196	2.0
10-14	5	201	6	146	358	3.7
15-17	14	289	5	136	444	4.6
18-20	45	625	14	292	976	10.1
21-24	42	659	12	375	1,088	11.2
25-34	74	1,192	16	736	2,018	20.8
35-44	33	689	9	496	1,227	12.6
45-54	26	513	14	362	915	9.4
55-64	21	292	2	254	569	5.9
65 and over	29	214	18	183	444	4.6
Unknown	5	719	2	531	1,257	13.0
Total	304	5,619	103	3,675	9,701	100.0

Source: National Roads Authority - Road Accident Facts

TABLE 4.20

Road deaths by age group, 2001

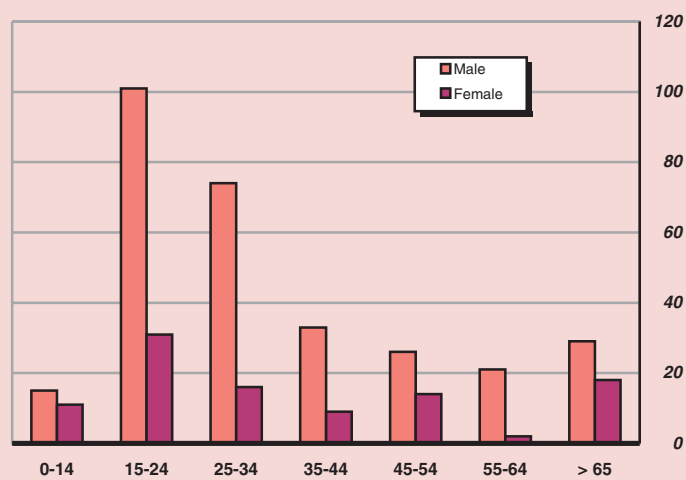


Table 4.21 Fatal accidents reported to the Health and Safety Authority

Work sector	Number				
	1998	1999	2000	2001	2002
Agricultural, hunting and forestry	26	23	16	24	13
Fishing (diving)	6	2	7	2	3
Mining and quarrying	1	3	3	5	2
Manufacturing	4	8	9	3	7
Electricity, gas and water supply	–	–	1	–	2
Construction	22	18	18	18	21
Wholesale and retail trade: repair of motor vehicles, motorcycles; personal and household goods	1	1	3	1	1
Hotels and restaurants	1	–	–	–	–
Transport, storage and communications	4	8	4	5	8
Financial intermediation	–	–	–	–	–
Real estate, renting and business activities	1	2	3	3	1
Public administration and defence; compulsory and social security	1	2	5	2	2
Education	2	–	–	–	–
Health and social work	–	1	–	1	–
Other community, social and personal service activities	1	1	1	–	1
Total	70	69	70	64	61

Source: Department of Health and Children - Annual Report

Principal causes of fires attended by brigades

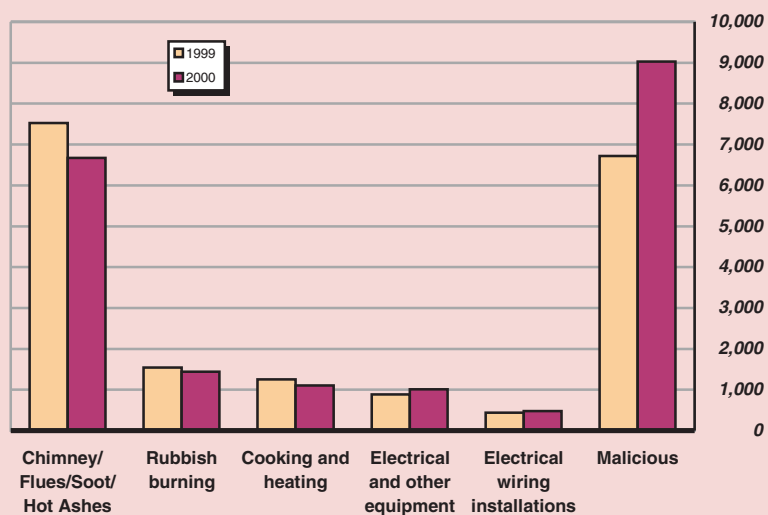


TABLE 4.21

Table 4.22 Causes of fires attended by brigades

Number attended

Cause of fire	1999	2000
Chimney/flues/soot/hot ashes	7,527	6,671
Matches/cigarette lighters	345	217
Rubbish burning	1,545	1,443
Cooking and heating	1,255	1,107
Electrical and other equipment	882	1,014
Electrical wiring installations	437	474
Malicious	6,717	9,028
Smoking materials	230	191
Using fuels to kindle fires	35	30
Explosions	32	14
Other suspected causes	555	775
Unknown causes	10,650	10,474
Total	30,210	31,438

Source: Department of the Environment and Local Government

Table 4.23 Deaths due to fire

Number

Year	Fatalities
1990	39
1991	52
1992	48
1993	51
1994	42
1995	38
1996	52
1997	51
1998	45
1999	51
2000	43
2001	58
2002	48

Source: Department of the Environment and Local Government

TABLE 4.22

TABLE 4.23

Deaths due to fire

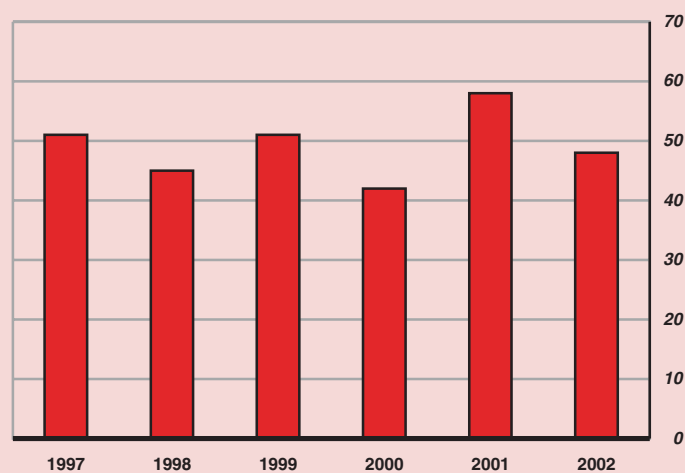


Table 4.24 Number on register of Dáil Electors

	<i>Number</i>				
Local Authorities	1998	1999	2000	2001	2002
County Councils	2,221,733	2,259,649	2,318,730	2,358,805	2,411,793
Carlow	33,297	34,169	35,179	36,054	37,008
Cavan	42,652	43,197	43,949	44,393	44,977
Clare	74,545	76,390	78,978	80,266	81,628
Cork	229,204	235,165	243,365	248,656	254,405
Donegal	103,542	105,538	106,941	108,147	110,720
Dún Laoghaire-Rathdown	148,189	148,212	148,047	148,350	149,252
Fingal	119,778	122,977	126,888	130,676	134,478
South Dublin	157,711	161,387	164,805	168,494	171,578
Galway	102,945	104,206	107,756	109,673	112,334
Kerry	100,712	101,776	102,870	104,096	105,520
Kildare	102,564	103,520	107,985	110,995	114,591
Kilkenny	56,234	57,402	58,821	59,759	61,080
Laois	39,359	40,922	42,367	43,246	44,610
Leitrim	21,200	21,332	21,945	21,914	22,246
Limerick	86,234	86,716	88,793	89,826	91,888
Longford	23,927	24,529	25,111	25,252	25,732
Louth	72,260	74,069	76,093	78,209	80,924
Mayo	87,118	88,041	90,533	91,104	92,656
Meath	92,326	94,860	98,346	102,329	107,894
Monaghan	40,581	41,237	41,378	41,601	42,110
Offaly	45,416	46,304	47,525	48,128	49,486
Roscommon	40,511	41,188	42,412	42,715	43,440
Sligo	43,712	43,876	45,087	45,441	46,150
North Tipperary	46,000	46,642	48,128	48,798	49,718
South Tipperary	58,292	58,599	60,162	60,676	61,508
Waterford	41,621	42,318	43,473	43,832	44,497
Westmeath	48,496	49,288	51,348	51,939	53,202
Wexford	84,694	85,635	88,195	91,049	93,280
Wicklow	78,613	80,154	82,250	83,187	84,881
City Councils	546,074	554,087	550,678	535,339	540,607
Cork	92,126	91,675	92,209	90,455	90,169
Dublin	347,772	355,807	351,054	337,538	342,409
Galway	38,643	39,111	39,726	40,088	40,414
Limerick	37,697	37,878	37,623	37,251	37,359
Waterford	29,836	29,616	30,066	30,007	30,256
Total	2,767,807	2,813,736	2,869,408	2,894,144	2,952,400

Source: Department of the Environment and Local Government, Franchise Section

TABLE 4.24

Table 4.25 Votes recorded at Dáil elections

Date of election	Numbers entitled to vote	Votes recorded	Votes recorded as percentage of numbers entitled to vote
February 1948	1,800,210	1,336,628	74.2
May 1951	1,785,144	1,343,616	75.3
May 1954	1,763,828	1,347,932	76.4
March 1957	1,738,278	1,238,559	71.3
October 1961	1,670,860	1,179,738	70.6
April 1965	1,683,019	1,264,415	75.1
June 1969	1,735,388	1,334,963	76.9
February 1973	1,783,604	1,366,474	76.6
June 1977	2,118,606	1,616,770	76.3
June 1981	2,275,450	1,734,379	76.2
February 1982	2,275,450	1,679,500	73.8
November 1982	2,335,153	1,701,385	72.9
February 1987	2,445,515	1,793,506	73.3
June 1989	2,448,810	1,677,592	68.5
November 1992	2,557,036	1,751,351	68.5
June 1997	2,741,262	1,806,932	65.9
May 2002	3,002,173	1,878,609	62.6

Source: Department of the Environment and Local Government, Franchise Section

