

Agriculture, Forestry and Fishing

9

Introductory text and technical notes	203
Table 9.1 Area under selected crops	207
Table 9.2 Number of holdings	207
Table 9.3 Number of selected livestock	208
Graph <i>Number of cattle, sheep and pigs</i>	208
Table 9.4 Area, yield and production of crops	209
Table 9.5 Area under crops and pasture in June	210
Graph <i>Area under principal root crops</i>	210
Table 9.6 Number of livestock in June	211
Table 9.7 Number of livestock in December	212
Table 9.8 Agricultural land sales	213
Table 9.9 Agricultural labour input (persons)	213
Table 9.10 Agricultural labour input (annual work units)	213
Table 9.11 Output, input and income in agriculture	214-215
Graph <i>Total net subsidies and operating surplus</i>	214
Graph <i>Selected income indicators</i>	215
Table 9.12 Agricultural output	216
Table 9.13 Selected volume indices	217
Table 9.14 Output of cattle and calves (number)	218

Table 9.15	Output of cattle and calves (value)	218
Graph	<i>Cattle, sheep and pig output at current producer prices</i>	218
Table 9.16	Output of pigs (number)	219
Table 9.17	Output of pigs (value)	219
Table 9.18	Output of sheep (number)	220
Table 9.19	Output of sheep (value)	220
Table 9.20	Agricultural output price index	221
Table 9.21	Agricultural input price index	221
Graph	<i>Annual Agricultural price indices</i>	221
Table 9.22	Average price of bullocks and heifers at auction marts	222
Table 9.23	Average price of young pigs at auction marts	222
Table 9.24	Average price of sheep at auction marts	222
Table 9.25	Milk – price per litre paid by creameries to producers	222
Table 9.26	Cereal supply balance	223
Table 9.27	Meat supply balance	223
Graph	<i>Domestic uses of meat</i>	223
Table 9.28	Milk output and use (whole milk only)	224
Table 9.29	Livestock slaughterings	224
Graph	<i>Livestock slaughterings</i>	224
Table 9.30	Sea fish landings by species	225
Table 9.31	Sea fish landings by consumption category	226
Table 9.32	Aquaculture production	226
Graph	<i>Fish landings</i>	226
Table 9.33	Inland fish catches	227
Table 9.34	Sales of commercial and rod angling licences	227
Table 9.35	Coillte Teoranta-owned forest properties	227
Table 9.36	Border, Midland and Western regional agricultural accounts	228

Table 9.37	Southern and Eastern regional agricultural accounts	229
Table 9.38	Regional agricultural accounts, main items for each region	230

9

Agriculture, Forestry and Fishing

- The numbers of cattle, sheep and pigs have more than trebled since the time of the Famine. In 2002 there were 7.0 million cattle, 7.2 million sheep and 1.8 million pigs.
- The total area farmed in 2002 was 4.4 million hectares. Crops, fruit and horticulture accounted for 10% of that area, silage for 23%, hay for 4%, pasture for 52% and rough grazing for 11%.
- The average price per acre of agricultural land was €5,534 in 2002.
- In 2002, 240,000 persons worked in agriculture. This was 35,000 fewer than in 1998.
- Between 1996 and 2002 agricultural output prices fell by 5% while input prices rose by over 9%.
- Aquaculture production was worth €107 million in 2001.

Introduction

This chapter contains information on Irish agriculture. The statistics are mainly drawn from CSO surveys. The tables presented cover estimates of activity on farms (crop areas, livestock numbers, number of farm holdings and labour input); the quantities, prices and values of agricultural inputs and outputs; and some detailed figures on Ireland's fishery and forestry sectors.

Long term trends

Tables 9.1 to 9.3 present a historical review of farm activity since 1847. There has been a huge decrease in the area under crops particularly oats and potatoes reflecting a change from horse drawn transport and a more varied diet especially increased consumption of meat. The number of farm holdings has declined from 419,500 in 1855 to 136,500 in 2002.

This decline is due to a number of factors: greater land ownership; increased mechanisation allowing larger farms to be operated; the migration of labour to urban areas and the change from subsistence farming to business farming. The number of horses and ponies decreased from 445,000 in 1847 to 73,000 in 2002. In contrast, the numbers of cattle, sheep and pigs have all more than trebled.

Some recent trends

Cattle numbers increased during most of the 1990s, reaching a peak of 7.640 million in 1998, but have declined sharply since then.

Sheep numbers increased sharply during the late 1980s and early 1990s but have declined in recent years.

The price per acre of agricultural land has risen each year apart from a slight fall in 2002 to €5,534 - still a price nearly 53% higher than in 1998.

Farm workforce

Tables 9.9 and 9.10 show a continuing downward trend in the number of farms and persons engaged in agriculture. In 2002 around 240,000 persons did some farm work. Much of this was on a part-time or seasonal basis. It is generally acknowledged that today's farmers are increasingly dependent on household income earned from non-farming activities. The decline in the number of women working on farms has been relatively greater.

Income from farming

Table 9.11 shows the value of agricultural income (operating surplus). In 2002 cattle (25%) and milk (31%) accounted for 56% of goods output at producer prices.

Table 9.11 also shows how agricultural income is increasingly dependent on subsidy payments. In 2002 net subsidies accounted for 65.5% of agricultural income compared to 51.7% in 2001. This increase in the proportion of income arising from subsidies was due to a combination of increased subsidy payments and a reduction in the value of the goods output of the agriculture sector. The cost of farm inputs (intermediate consumption) rose by 11.0 % over the period 1998 to 2002.

Agriculture price indices

Tables 9.20 and 9.21 show recent trends in the agricultural output and input price indices. In 2002 the total outputs price index was less than in 1996 while the total inputs price index was greater than in 1996. In particular, the input price indices for energy, fertilisers and veterinary expenses have increased substantially.

Forestry and fishery

Tables 9.30 to 9.34 present information on fishing. Aquaculture is becoming increasingly important accounting for 33.9 % of the value of fishery production in 2001.

Table 9.35 presents information on Coillte activities. The volume of timber sold increased by over 14% between 1998 and 2002. Average levels of industrial employment rose by over 23% between 2001 and 2002.

Yield

The yield figures are given on a green (as harvested) basis.

Annual Work Unit

This is defined as 1,800 hours or more per annum. Holidays and sick leave are excluded.

Number of farms

A new methodology was introduced as part of the Census of Agriculture in 1991. The new results were generally consistent for crop areas and numbers of livestock. However, the more rigorous nature of the 1991 Census resulted in fewer farms than under the old methodology.

Agricultural land sales

Transactions in Dublin, those under 2 hectares and those outside the range €500-€35,000 per hectare have been excluded.

Tables 9.3 and 9.6

The number of sheep shown for the year 2000 differs from the total shown in the Census of Agriculture June 2000 publication. As explained in that publication, the Census figure for lambs was considerably less than a matched sample estimate. The difference was due to delayed response by some farmers to the Census. The CSO considers the matched sample estimate to be the best estimate of numbers in that category on 1 June 2000 and the data in the Yearbook incorporate that figure.

Table 9.11

Operating surplus is calculated before deduction of interest payments on borrowed capital and land rental paid by farmers to landowners.

Table 9.12

The output of cattle, sheep and pigs includes estimates for cross-border trade in live animals.

Table 9.1 Area under selected crops

Hectares (thousands)

Year	Wheat	Oats	Barley	Potatoes	Crops, fruit and horticulture
1847	272	625	120	89	1266
1857	192	565	81	359	1373
1867	88	475	69	308	1121
1877	42	403	90	262	970
1887	18	362	65	238	841
1897	13	313	68	199	745
1907	12	290	67	172	687
1917	43	420	71	210	907
1927	14	261	49	148	612
1937	89	232	53	132	644
1947	235	334	59	155	937
1957	164	186	124	108	711
1967	76	96	183	65	527
1977	48	35	298	53	508
1987	56	23	255	29	438
1997	94	21	190	18	414
1999	68	20	192	18	401
2000	78	17	182	14	401
2001	85	17	182	14	416
2002	103	19	176	15	423

Source: CSO

Table 9.2 Number of holdings

Number

Year	Total	Leinster	Munster	Connaught	Ulster (part)
1855	419,500	117,800	115,500	115,600	70,600
1865	419,400	114,000	114,600	120,700	70,000
1875	410,000	109,600	113,000	119,700	67,700
1885	396,900	105,100	110,000	116,000	65,700
1895	397,800	104,800	111,200	116,100	65,700
1905	399,900	104,000	113,400	116,700	65,800
1915	359,700	87,900	101,800	109,000	60,900
1930	338,000	83,600	98,200	103,000	53,100
1940	326,700	81,100	95,600	99,400	50,600
1950	317,900	78,500	93,700	97,100	48,600
1960	290,300	71,800	88,200	87,300	42,900
1970	279,500	70,400	86,700	81,800	40,500
1980	263,600	66,600	83,100	76,200	37,600
1991	170,100	42,700	56,300	48,900	22,100
1997	147,800	38,000	50,000	41,200	18,600
2000	141,500	35,600	46,200	40,900	18,900
2001	139,600	35,100	45,600	40,400	18,600
2002	136,500	34,300	44,600	39,500	18,200

Source: CSO

Table 9.3 Number of selected livestock

Thousands

Year	Cattle	Sheep	Pigs	Poultry	Horses and ponies
1847	2,005	2,046	542	4,630	445
1857	2,902	3,240	1,029	7,677	466
1867	2,996	4,546	1,050	8,302	399
1877	3,238	3,739	1,221	10,852	417
1887	3,412	3,117	1,146	11,146	431
1897	3,662	3,796	1,064	13,431	471
1907	3,889	3,425	1,085	18,200	464
1917	4,132	3,327	844	17,047	470
1927	4,047	3,120	1,178	21,584	429
1937	3,955	3,000	934	19,491	429
1947	3,950	2,094	457	17,304	438
1957	4,417	3,720	900	14,502	258
1967	5,586	4,239	985	10,593	143
1977	7,124	3,534	939	9,336	80
1987	6,545	5,595	999	9,823	59
1997	7,533	8,132	1,700	13,433	72
1999	7,387	7,925	1,787	12,697	76
2000	7,037	7,555	1,722	13,961	70
2001	7,050	7,330	1,741	12,603	71
2002	6,992	7,210	1,769	12,709	73

Source: CSO

Number of cattle, sheep and pigs

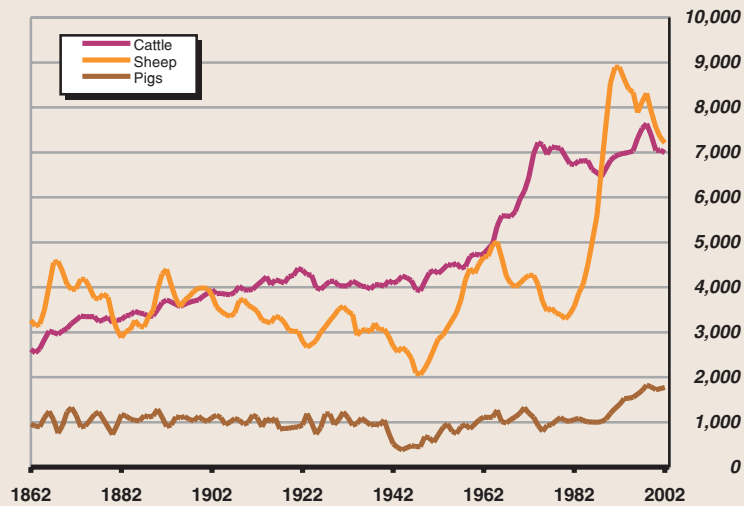


Table 9.4 Area, yield and production of crops

Crop		Unit	1998	1999	2000	2001	2002
Total wheat	Area	Hectares (000)	83.8	68.1	78.0	84.9	102.7
	Yield	Tonnes per hectare	8.0	8.8	9.5	9.1	8.4
	Production	Tonnes (000)	673.0	597.4	737.4	769.2	867.2
<i>Winter</i>	<i>Area</i>	<i>Hectares (000)</i>	<i>65.5</i>	<i>40.6</i>	<i>58.8</i>	<i>49.9</i>	<i>80.0</i>
	<i>Yield</i>	<i>Tonnes per hectare</i>	<i>8.1</i>	<i>9.4</i>	<i>9.9</i>	<i>9.8</i>	<i>8.8</i>
	<i>Production</i>	<i>Tonnes (000)</i>	<i>531.9</i>	<i>382.1</i>	<i>582.3</i>	<i>489.2</i>	<i>703.6</i>
<i>Spring</i>	<i>Area</i>	<i>Hectares (000)</i>	<i>18.4</i>	<i>27.4</i>	<i>19.1</i>	<i>35.0</i>	<i>22.7</i>
	<i>Yield</i>	<i>Tonnes per hectare</i>	<i>7.7</i>	<i>7.8</i>	<i>8.1</i>	<i>8.0</i>	<i>7.2</i>
	<i>Production</i>	<i>Tonnes (000)</i>	<i>141.1</i>	<i>215.3</i>	<i>155.1</i>	<i>280.0</i>	<i>163.6</i>
Total oats	Area	Hectares (000)	19.4	20.2	16.8	16.8	18.8
	Yield	Tonnes per hectare	6.1	6.7	7.5	7.1	7.1
	Production	Tonnes (000)	119.1	136.4	126.6	118.7	133.6
<i>Winter</i>	<i>Area</i>	<i>Hectares (000)</i>	<i>12.1</i>	<i>7.7</i>	<i>9.6</i>	<i>5.7</i>	<i>11.8</i>
	<i>Yield</i>	<i>Tonnes per hectare</i>	<i>6.6</i>	<i>7.8</i>	<i>8.3</i>	<i>8.0</i>	<i>7.8</i>
	<i>Production</i>	<i>Tonnes (000)</i>	<i>80.2</i>	<i>60.2</i>	<i>79.8</i>	<i>45.2</i>	<i>92.1</i>
<i>Spring</i>	<i>Area</i>	<i>Hectares (000)</i>	<i>7.3</i>	<i>12.5</i>	<i>7.2</i>	<i>11.1</i>	<i>7.0</i>
	<i>Yield</i>	<i>Tonnes per hectare</i>	<i>5.3</i>	<i>6.1</i>	<i>6.5</i>	<i>6.6</i>	<i>5.9</i>
	<i>Production</i>	<i>Tonnes (000)</i>	<i>38.9</i>	<i>76.2</i>	<i>46.8</i>	<i>73.4</i>	<i>41.5</i>
Total barley	Area	Hectares (000)	190.7	192.0	182.3	182.0	176.0
	Yield	Tonnes per hectare	5.6	6.7	7.2	7.0	5.5
	Production	Tonnes (000)	1,073.0	1,277.5	1,309.9	1,277.2	962.8
<i>Winter</i>	<i>Area</i>	<i>Hectares (000)</i>	<i>39.0</i>	<i>26.2</i>	<i>24.1</i>	<i>19.6</i>	<i>23.2</i>
	<i>Yield</i>	<i>Tonnes per hectare</i>	<i>6.4</i>	<i>7.6</i>	<i>8.4</i>	<i>8.0</i>	<i>6.6</i>
	<i>Production</i>	<i>Tonnes (000)</i>	<i>249.9</i>	<i>200.5</i>	<i>202.6</i>	<i>156.7</i>	<i>152.8</i>
<i>Spring</i>	<i>Area</i>	<i>Hectares (000)</i>	<i>151.7</i>	<i>165.8</i>	<i>158.2</i>	<i>162.4</i>	<i>152.8</i>
	<i>Yield</i>	<i>Tonnes per hectare</i>	<i>5.4</i>	<i>6.5</i>	<i>7.0</i>	<i>6.9</i>	<i>5.3</i>
	<i>Production</i>	<i>Tonnes (000)</i>	<i>823.1</i>	<i>1,077.0</i>	<i>1,107.3</i>	<i>1,120.5</i>	<i>810.0</i>
Beans and peas	Area	Hectares (000)	6.5	4.1	1.5	1.9	1.7
	Yield	Tonnes per hectare	5.0	4.5	5.1	4.7	4.5
	Production	Tonnes (000)	32.4	18.4	7.7	8.9	7.5
Oilseed rape	Area	Hectares (000)	5.6	2.6	2.7	2.4	2.2
	Yield	Tonnes per hectare	2.9	1.9	3.2	3.0	3.1
	Production	Tonnes (000)	16.6	5.1	8.6	7.3	6.7
Potatoes	Area	Hectares (000)	18.5	17.5	13.5	14.3	15.4
	Yield	Tonnes per hectare	26.1	32.0	33.6	33.5	33.7
	Production	Tonnes (000)	482.1	558.6	454.8	477.6	518.6
Sugar beet	Area	Hectares (000)	32.9	33.8	32.2	31.1	31.3
	Yield	Tonnes per hectare	49.8	50.7	56.8	48.2	42.0
	Production	Tonnes (000)	1,640.0	1,712.1	1,829.0	1,498.0	1,313.4
Turnips	Area	Hectares (000)	4.6	4.2	2.1	1.8	1.6
	Yield	Tonnes per hectare	45.3	42.0	60.0	54.4	54.4
	Production	Tonnes (000)	208.1	176.6	124.0	99.9	89.7
Fodder beet	Area	Hectares (000)	7.3	7.0	5.1	4.3	4.1
	Yield	Tonnes per hectare	64.8	70.4	70.3	65.5	60.9
	Production	Tonnes (000)	475.2	494.7	361.3	278.7	249.5

Source: CSO and Teagasc

Table 9.5 Area under crops and pasture in June

000 ha

Crop	1998	1999	2000	2001	2002
Total wheat	83.8	68.1	78.0	84.9	102.7
Winter	65.5	40.6	58.8	49.9	80.0
Spring	18.4	27.4	19.1	35.0	22.7
Total oats	19.4	20.2	16.8	16.8	18.8
Winter	12.1	7.7	9.6	5.7	11.8
Spring	7.3	12.5	7.2	11.1	7.0
Total barley	190.7	192.0	182.3	182.0	176.0
Winter	39.0	26.2	24.1	19.6	23.2
Spring	151.7	165.8	158.2	162.4	152.8
Other cereals	6.6	9.5	2.0	2.2	1.8
Total cereals	300.6	289.9	279.0	285.9	299.3
Beans and peas	6.5	4.1	1.5	1.9	1.7
Oilseed rape	5.6	2.6	2.7	2.4	2.2
Arable silage ¹	–	–	24.4	24.4	20.8
Maize silage ¹	–	–	14.0	19.7	19.3
Potatoes	18.5	17.5	13.5	14.3	15.4
Turnips	4.6	4.2	2.1	1.8	1.6
Sugar beet	32.9	33.8	32.2	31.1	31.3
Fodder beet	7.3	7.0	5.1	4.3	4.1
Kale and field cabbage	1.1	1.1	1.0	1.0	0.9
Vegetables for sale	5.1	4.5	4.1	4.3	4.0
Fruit	1.6	1.4	1.2	1.2	0.9
Nursery stock, bulbs and flowers	1.2	1.5	0.9	0.9	1.1
Other crops ¹	23.0	33.4	19.4	22.4	21.0
Total crops, fruit and horticulture	408.1	401.0	401.1	415.5	423.4
Silage	950.4	977.4	1,074.7	1,065.9	1,015.1
Hay	282.7	250.4	242.6	251.5	199.4
Pasture	2,327.3	2,325.1	2,218.1	2,214.0	2,262.4
Crops and pasture	3,968.4	3,953.9	3,936.5	3,947.0	3,900.3
Rough grazing in use	446.4	464.5	506.5	463.1	471.7
Area farmed	4,414.8	4,418.4	4,443.2	4,410.1	4,372.0

¹ Arable and maize silage were first identified as separate categories in 2000.

Source: CSO

Area under principal root crops

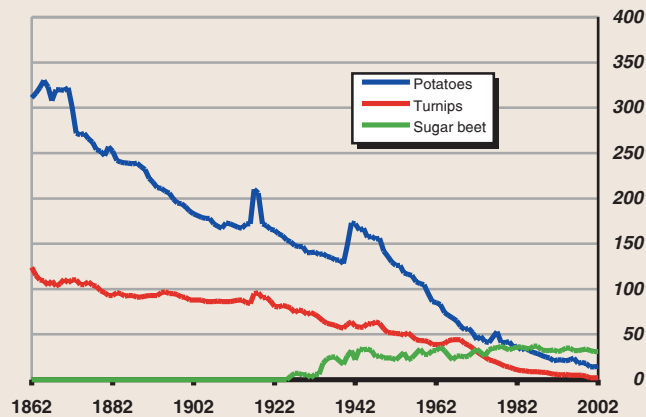


Table 9.6 Number of livestock in June

Thousands

Livestock	1998	1999	2000	2001	2002
Breeding cattle					
Bulls	53.0	54.6	56.1	58.8	62.8
Cows	2,481.7	2,417.9	2,364.4	2,379.3	2,318.3
<i>Dairy</i>	1,233.8	1,200.6	1,177.5	1,182.5	1,164.1
<i>Other</i>	1,247.9	1,217.3	1,187.0	1,196.8	1,154.2
Heifers in calf	355.5	330.1	331.6	331.1	373.9
<i>Dairy</i>	228.8	213.6	206.5	198.3	230.7
<i>Other</i>	126.7	116.5	125.1	132.8	143.2
Other cattle					
Two years old and upwards	1,002.1	1,057.7	1,016.2	941.1	844.7
<i>Male</i>	708.1	736.7	721.6	642.1	560.4
<i>Female</i>	294.0	321.0	294.7	299.0	284.3
One year old and under two years	1,782.6	1,706.0	1,517.1	1,515.0	1,593.2
<i>Male</i>	1,085.6	1,039.0	912.4	913.3	991.8
<i>Female</i>	697.0	667.1	604.7	601.7	601.4
Under one year	1,965.0	1,820.7	1,751.9	1,824.4	1,799.3
<i>Male</i>	1,054.8	965.1	919.4	955.2	953.1
<i>Female</i>	910.3	855.5	832.5	869.2	846.2
Total cattle	7,640.0	7,387.0	7,037.4	7,049.7	6,992.2
Sheep					
Rams	114.1	111.7	109.5	104.9	105.3
Total ewes	4,463.3	4,287.2	4,106.9	3,914.6	3,804.1
<i>Two years and over</i>	3,536.4	3,475.8	3,398.3	3,261.3	3,150.0
<i>Under two years</i>	926.9	811.4	708.6	653.3	654.1
Other sheep	3,734.6	3,526.6	3,338.7	3,310.9	3,300.1
Total sheep	8,312.0	7,925.5	7,555.0	7,330.3	7,209.6
Pigs					
Boars	4.9	4.3	4.0	3.4	3.5
Female breeding pigs	194.9	188.4	176.9	183.4	181.6
Other pigs classified by liveweight					
<i>20 kg and over</i>	1,149.5	1,101.4	1,014.8	999.8	1,028.4
<i>under 20 kg</i>	469.2	492.8	526.5	554.5	556.0
Total pigs	1,818.6	1,786.9	1,722.1	1,741.1	1,769.5
Poultry					
Ordinary fowl	11,586.6	11,419.7	12,724.9	11,450.3	11,599.1
Other fowl	1,560.2	1,277.7	1,235.9	1,152.3	1,109.5
Total poultry	13,146.9	12,697.4	13,960.8	12,602.6	12,708.6
Horses and ponies	72.8	75.5	69.9	71.0	72.6
Mules, jennets and asses	7.5	7.3	5.0	4.9	4.7
Goats	15.1	13.5	8.1	7.8	7.7
Farmed deer	16.7	16.1	12.1	12.1	11.6

Source: CSO

TABLE 9.6

Table 9.7 Number of livestock in December

Thousands

Livestock	1998	1999	2000	2001	2002
Breeding cattle					
Bulls	46.8	47.5	49.8	53.0	55.3
Cows	2,395.0	2,340.6	2,308.0	2,307.7	2,279.5
<i>Dairy</i>	1,198.8	1,173.8	1,152.8	1,148.0	1,128.7
<i>Other</i>	1,196.2	1,166.8	1,155.2	1,159.7	1,150.8
Heifers in calf	352.7	335.7	343.3	353.7	357.4
<i>Dairy</i>	223.8	210.4	202.9	206.2	215.8
<i>Other</i>	128.8	125.2	140.4	147.5	141.6
Other cattle					
Two years old and upwards	818.9	738.7	669.8	485.3	471.2
<i>Male</i>	546.4	491.1	452.3	288.0	278.6
<i>Female</i>	272.5	247.6	217.5	197.3	192.6
One year old and under two years	1,548.8	1,446.4	1,269.3	1,329.0	1,363.8
<i>Male</i>	976.1	904.8	798.1	841.4	885.6
<i>Female</i>	572.8	541.6	471.2	487.6	478.2
Under one year	1,789.5	1,648.9	1,689.9	1,879.4	1,805.7
<i>Male</i>	983.1	892.2	927.1	1,007.4	1,001.1
<i>Female</i>	806.5	756.7	762.8	872.0	804.6
Total cattle	6,951.7	6,557.9	6,330.2	6,408.1	6,332.8
Sheep					
Ewes for breeding	4,269.3	4,101.8	3,933.8	3,812.0	3,730.9
Rams for breeding	117.4	114.8	111.8	108.2	104.0
Other sheep	1,172.4	1,101.9	1,010.5	886.8	993.6
Total sheep	5,559.1	5,318.6	5,056.0	4,807.0	4,828.5
Pigs					
Pigs for breeding					
Gilts in pig	25.7	24.2	22.9	24.3	20.9
Sows in pig	107.1	107.7	109.8	107.8	110.4
Other sows for breeding	37.4	38.9	33.9	37.3	33.8
Gilts not yet served	17.6	15.6	18.1	17.9	18.1
Boars	4.6	4.1	4.0	3.7	3.1
Other pigs (classified by liveweight)					
80 kg and over	169.6	158.8	155.4	169.4	178.4
50 kg and under 80 kg	433.7	407.7	395.6	400.6	392.6
20 kg and under 50 kg	535.9	520.3	510.0	497.5	499.2
Less than 20 kg	469.3	485.7	481.8	504.6	525.0
Total pigs	1,800.9	1,762.9	1,731.5	1,762.9	1,781.5
Poultry					
Ordinary fowl	10,991.1	11,636.2	11,752.8	11,266.7	11,341.5
Other fowl	1,889.0	2,001.5	1,833.9	1,944.3	1,867.0
Total poultry	12,880.0	13,637.7	13,586.7	13,211.0	13,208.4

Source: CSO

Table 9.8 Agricultural land sales

	Unit	1998	1999	2000	2001	2002
Average transaction size	ha	17.5	14.2	11.2	11.1	10.8
Average price per hectare	€	8,951	11,298	12,683	13,891	13,674
Average price per acre	€	3,622	4,572	5,132	5,622	5,534

Source: CSO

Table 9.9 Agricultural labour input (persons)

	Thousands				
Sex and category of worker	1998	1999	2000	2001	2002
Total	275.1	270.0	257.9	252.6	240.1
Males	197.1	193.6	187.7	183.8	177.5
Females	78.0	76.4	70.3	68.8	62.7
Family workers	261.6	257.0	243.6	238.1	226.9
Holder	146.2	143.7	141.3	139.4	136.3
Spouse	50.6	49.9	45.1	44.5	40.7
Other family workers	64.9	63.4	57.2	54.3	50.0
Regular non-family workers	13.5	12.9	14.4	14.6	13.1

Source: CSO

Table 9.10 Agricultural labour input (annual work units)

	Thousands				
Sex and category of worker	1998	1999	2000	2001	2002
Total labour input	200.2	191.7	171.7	166.8	158.1
Family and regular non-family workers	191.4	183.6	163.9	159.5	151.5
Males	146.3	140.3	127.3	124.4	119.0
Females	45.2	43.3	36.6	35.1	32.4
Family workers	183.0	176.1	155.9	151.8	144.0
Holder	120.4	116.7	105.8	104.4	100.8
Spouse	31.1	29.8	25.2	24.4	22.0
Other family workers	31.6	29.5	25.0	23.1	21.3
Regular non-family workers	8.4	7.5	8.0	7.7	7.5
Non-regular labour input					
Casual, contract and relief workers	8.7	8.1	7.8	7.2	6.7
Average labour input per farm	1.37	1.33	1.21	1.19	1.16

Source: CSO

TABLE 9.8

TABLE 9.9

TABLE 9.10

Table 9.11 Output, input and income in agriculture

€m

Commodity	Estimated value at current prices				
	1998	1999	2000	2001	2002
Livestock	2,166.7	2,081.8	2,184.4	2,189.9	2,019.7
(including stock changes)					
Cattle	1,385.0	1,330.7	1,378.0	1,257.9	1,168.1
Pigs	284.4	253.3	299.3	347.5	300.1
Sheep	214.0	198.0	203.4	285.8	202.2
Horses	128.7	150.0	164.3	146.5	198.7
Poultry	154.6	149.8	139.4	152.2	150.6
Livestock Products	1,466.7	1,439.3	1,486.1	1,605.4	1,454.3
Milk	1,431.2	1,408.7	1,447.0	1,567.7	1,415.1
Other products	35.5	30.5	39.0	37.7	39.3
Crops	1,028.6	1,081.5	1,093.4	1,167.7	1,107.6
(including stock changes)					
Barley	84.3	106.8	114.2	105.3	73.1
Wheat	51.5	48.5	63.0	57.8	61.0
Oats	7.3	8.8	7.9	6.7	7.6
Potatoes	105.1	120.2	58.4	98.8	95.8
Sugar beet	74.4	72.9	74.9	75.1	72.1
Mushrooms	106.7	111.4	114.8	115.6	137.7
Other fresh vegetables	61.4	60.4	75.7	84.6	75.5
Fresh fruit	15.5	8.4	7.1	16.0	22.9
Turf	22.0	24.1	22.5	26.5	27.8
Other crops	36.1	44.2	46.2	48.6	50.6
Forage plants	464.5	475.9	508.7	532.7	483.5
Goods output at producer prices	4,662.0	4,602.5	4,764.0	4,963.0	4,581.7
Contract work	250.6	272.9	288.4	312.1	287.2
Subsidies on products	899.6	743.7	876.7	710.8	904.1
Taxes on products	39.4	27.9	32.9	25.0	27.4
Agricultural output at basic prices	5,772.7	5,591.2	5,896.2	5,960.8	5,745.6

TABLE 9.11

Total net subsidies and operating surplus

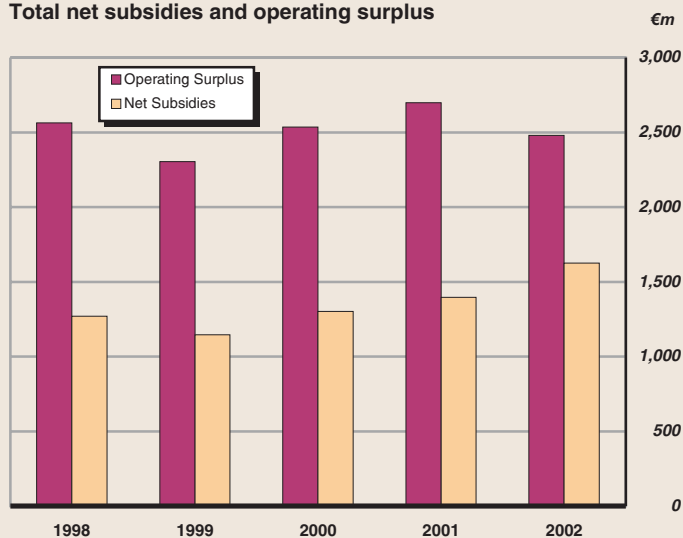


Table 9.11 Output, input and income in agriculture (continued)

€m

Commodity	Estimated value at current prices				
	1998	1999	2000	2001	2002
Agricultural output at basic prices	5,772.7	5,591.2	5,896.2	5,960.8	5,745.6
Intermediate consumption	2,806.6	2,880.6	2,963.4	3,109.3	3,114.4
Feedingstuffs	831.2	860.9	831.2	882.5	942.5
Fertilisers	328.7	338.3	337.1	351.3	343.7
Seeds	63.3	52.6	57.4	67.9	71.7
Energy and lubricants	227.2	243.5	298.8	298.4	300.8
Maintenance and repairs	199.3	203.5	206.0	216.9	221.9
Services	136.3	130.3	131.1	136.8	140.2
Crop protection products	72.3	69.9	67.4	60.5	73.0
Veterinary pharmaceutical products	104.7	99.5	100.2	105.8	108.8
Other goods (detergents, small tools etc)	132.4	137.4	141.4	148.5	145.2
Forage plants	460.8	471.8	504.6	528.5	479.5
Contract work	250.6	272.9	288.4	312.1	287.2
Gross value added at basic prices	2,966.1	2,710.5	2,932.8	2,851.5	2,631.2
Fixed capital consumption	544.6	562.5	582.4	609.8	623.6
Machinery, equipment etc	397.4	409.1	417.7	426.1	430.2
Farm buildings	147.2	153.4	164.7	183.7	193.5
Net value added at basic prices	2,421.5	2,148.1	2,350.3	2,241.7	2,007.5
Other subsidies less taxes on production	409.3	430.2	457.5	709.8	748.3
Factor income	2,830.8	2,578.2	2,807.8	2,951.5	2,755.8
Compensation of employees	267.5	274.9	272.6	254.4	276.2
Operating surplus	2,563.3	2,303.4	2,535.3	2,697.2	2,479.6

Source: CSO

TABLE 9.11

Selected income indicators

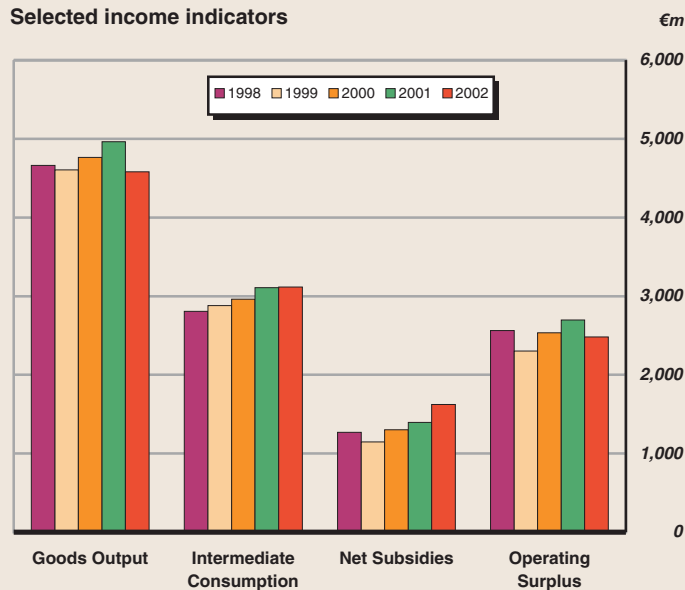


Table 9.12 Agricultural output

Commodity	Unit	Estimated quantity				
		1998	1999	2000	2001	2002
Livestock						
(including stock changes)						
Cattle	number (000)	2,157	2,132	2,061	2,072	1,825
Pigs	number (000)	3,645	3,510	3,280	3,351	3,348
Sheep	number (000)	4,042	4,018	3,614	3,474	3,089
Poultry	number (000)	60,367	61,592	59,462	60,845	60,427
Livestock products						
Milk	million litres	4,990	5,018	5,048	5,220	5,072
Eggs	million	487	455	565	550	583
Crops						
(including stock changes)						
Barley	tonnes (000)	817	976	1,077	982	740
Wheat	tonnes (000)	488	442	608	493	628
Oats	tonnes (000)	74	79	81	69	78
Potatoes	tonnes (000)	375	451	354	377	371
Sugar beet	tonnes (000)	1,399	1,405	1,418	1,372	1,296
Mushrooms	tonnes (000)	62	65	60	68	69
Turf	tonnes (000)	450	492	460	501	415

Source: CSO

Table 9.13 Selected volume indices*Base year 1995=100*

Commodity	1998	1999	2000	2001	2002
Goods output at producer prices	102.7	103.5	101.6	104.0	98.9
Livestock	109.7	108.4	102.2	102.3	95.7
Cattle	108.6	106.6	100.2	99.3	91.7
Pigs	121.0	118.3	111.7	114.4	112.5
Sheep	105.3	105.7	95.6	92.3	78.1
Horses	107.3	116.5	129.1	143.0	151.4
Poultry	106.2	108.9	101.1	105.9	103.5
Livestock products	96.0	96.4	97.2	100.3	97.6
Milk	96.2	96.7	97.3	100.6	97.7
Crops	97.4	103.0	106.7	113.0	108.1
Barley	101.3	121.0	133.2	121.1	91.5
Wheat	119.6	109.1	150.6	123.3	156.1
Potatoes	72.4	90.4	63.5	76.0	72.2
Sugar beet	96.7	95.3	98.2	95.0	87.7
Fresh vegetables	110.0	113.9	114.4	123.7	120.3
Intermediate consumption	101.6	103.7	102.2	104.3	103.0
Feeding stuffs	106.9	113.9	107.9	109.6	114.7
Fertilisers	92.5	94.6	89.1	79.7	78.6
Seeds	106.3	83.0	84.1	101.6	102.4
Energy and lubricants	105.0	107.0	107.6	110.4	111.6
Maintenance and repairs	101.8	99.7	95.4	93.2	91.5
Services	96.8	92.0	89.3	87.7	84.3
Crop protection products	116.1	112.5	109.0	96.9	115.9
Veterinary pharmaceutical products	103.5	97.3	93.5	95.8	95.4
Gross value added at basic prices	106.7	101.6	103.8	99.7	95.3

*Source: CSO***TABLE 9.13**

Table 9.14 Output of cattle and calves (number)

	<i>Thousands</i>				
	1998	1999	2000	2001	2002
Live exports	169	413	405	102	121
Export slaughterings	1,773	1,977	1,752	1,779	1,675
Other slaughterings	146	136	134	114	107
Total disposals	2,087	2,526	2,290	1,995	1,903
Imports	1	0	1	1	2
Change in stocks	70	-394	-228	78	-75
Output of cattle and calves	2,157	2,132	2,061	2,072	1,825

Source: CSO

Table 9.15 Output of cattle and calves (value)

	<i>€m</i>				
	1998	1999	2000	2001	2002
Live exports	76	199	195	56	63
Export slaughterings	1,183	1,237	1,246	1,152	1,086
Other slaughterings	76	67	70	57	54
Total disposals	1,335	1,504	1,511	1,265	1,203
Imports	1	1	2	2	3
Change in stocks	51	-173	-131	-5	-33
Output of cattle and calves	1,385	1,331	1,378	1,258	1,168

Source: CSO

Cattle, sheep and pig output at current producer prices

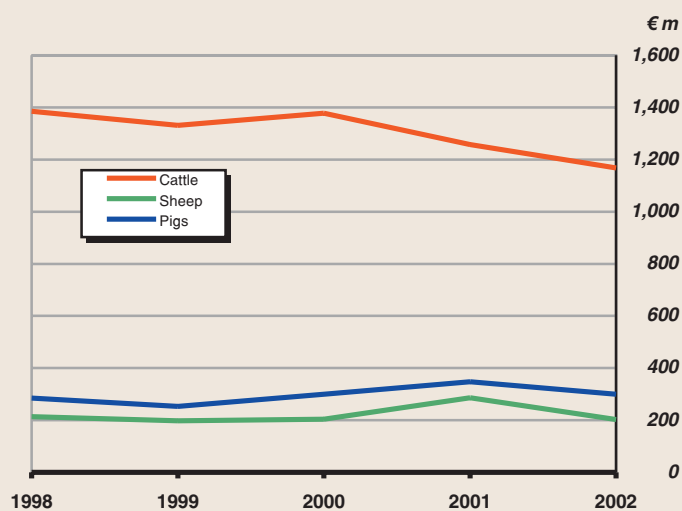


Table 9.16 Output of pigs (number)

Thousands

	1998	1999	2000	2001	2002
Live exports	400	310	361	125	320
Export slaughterings	3,029	3,325	3,049	3,188	3,036
Other slaughterings	363	163	102	67	73
Total disposals	3,792	3,798	3,512	3,380	3,429
Imports	230	250	231	60	100
Change in stocks	84	-38	-1	32	19
Output of pigs	3,645	3,510	3,280	3,351	3,348

Source: CSO

Table 9.17 Output of pigs (value)

€m

	1998	1999	2000	2001	2002
Live exports	30	21	30	12	27
Export slaughterings	239	240	278	333	279
Other slaughterings	28	11	9	6	6
Total disposals	297	272	317	352	312
Imports	17	17	19	6	12
Change in stocks	5	-2	1	2	0
Output of pigs	284	253	299	347	300

Source: CSO

TABLE 9.16

TABLE 9.17

Table 9.18 Output of sheep (number)

	<i>Thousands</i>				
	1998	1999	2000	2001	2002
Live exports	135	135	135	20	25
Export slaughterings	3,666	3,903	3,552	3,500	2,925
Other slaughterings	659	621	564	403	383
Total disposals	4,460	4,658	4,252	3,923	3,333
Imports	400	400	375	217	265
Change in stocks	-18	-241	-263	-232	22
Output of sheep	4,042	4,018	3,614	3,474	3,089

Source: CSO

Table 9.19 Output of sheep (value)

	<i>€m</i>				
	1998	1999	2000	2001	2002
Live exports	8	7	8	2	2
Export slaughterings	194	190	194	281	193
Other slaughterings	38	33	36	35	29
Total disposals	239	230	239	318	224
Imports	24	22	23	19	19
Change in stocks	-1	-10	-12	-14	-2
Output of sheep	214	198	203	286	202

Source: CSO

TABLE 9.18

TABLE 9.19

Table 9.20 Agricultural output price index

Base year 1995=100

	1996	1997	1998	1999	2000	2001	2002
Total outputs	95.5	89.6	88.9	85.3	90.7	94.8	90.7
Cattle	84.3	79.8	77.4	73.9	82.9	76.8	78.6
Sheep	122.1	125.2	107.5	98.8	111.4	159.5	134.6
Pigs	111.5	99.3	80.4	72.8	90.3	102.1	89.5
Poultry	101.4	103.7	99.6	94.4	95.8	98.8	100.9
Milk	100.2	93.0	96.1	93.5	95.0	99.1	92.4
Cereals	88.6	72.6	75.8	80.3	76.6	79.8	70.5
Sugar beet	95.4	97.0	98.0	98.9	99.4	102.2	103.2
Potatoes	66.3	56.7	113.9	91.9	77.7	116.8	117.0
Vegetables	104.2	99.6	105.8	105.1	108.1	113.8	119.4

Source: CSO

Table 9.21 Agricultural input price index

Base year 1995=100

	1996	1997	1998	1999	2000	2001	2002
Total inputs	104.1	102.0	99.6	100.7	107.0	112.6	114.0
Feeding stuffs	104.3	100.1	95.3	94.2	96.7	101.6	103.1
Fertilisers	104.7	98.3	94.7	96.7	103.7	117.0	113.9
Seeds	105.5	102.6	104.1	104.2	102.0	105.5	109.5
Energy (including electricity)	106.8	109.0	105.9	111.8	139.4	135.4	135.2
Plant protection products	103.4	103.0	103.4	103.2	102.6	103.7	104.6
Veterinary expenses	104.0	107.5	110.3	111.8	116.6	122.8	128.4
Other inputs	101.0	102.6	103.7	106.2	110.7	117.0	122.0

Source: CSO

Annual Agricultural price indices

Base year
1995=100

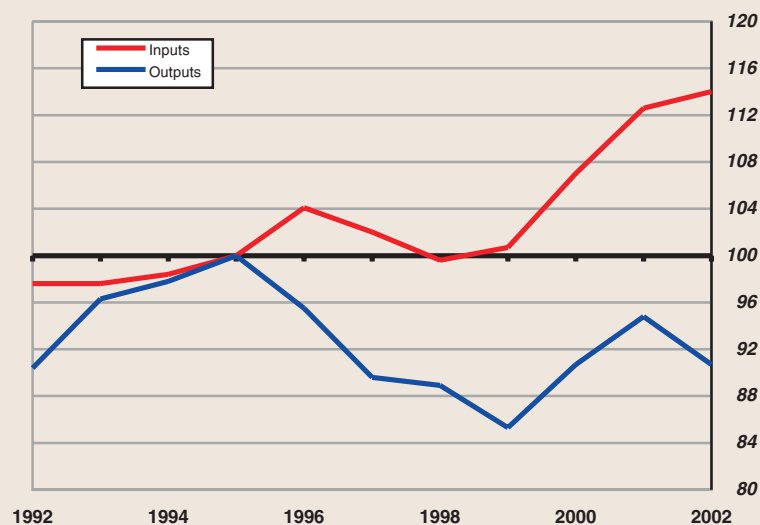


TABLE 9.20

TABLE 9.21

Table 9.22 Average price of bullocks and heifers at auction marts

€

	Price per 100 kg (liveweight)						
	1996	1997	1998	1999	2000	2001	2002
Bullocks							
300-349 kg	158.66	156.42	144.14	125.41	166.99	163.70	171.36
350-399 kg	150.04	148.62	136.11	124.08	159.83	154.38	158.96
400-449 kg	144.43	141.90	131.05	124.45	153.33	149.14	151.01
450-499 kg	140.46	136.97	129.31	124.63	147.06	144.24	146.99
500-549 kg	138.08	134.35	127.99	123.61	141.30	138.79	143.52
550 kg and over	136.21	130.28	126.45	122.26	137.82	133.38	138.78
Heifers							
300-349 kg	135.92	129.76	120.55	102.08	131.46	126.10	134.13
350-399 kg	130.43	127.45	118.81	109.69	131.29	127.13	132.43
400-449 kg	129.03	125.56	118.64	112.86	130.97	127.24	131.17

Source: CSO

Table 9.23 Average price of young pigs at auction marts

€

	Price per kg (liveweight)						
	1995	1996	1997	1998	1999	2000	2001
Young pigs							
15-24 kg	1.50	1.73	1.33	0.90	0.85	1.24	1.23
25-34 kg	1.39	1.52	1.28	0.96	0.90	1.21	1.28
35-44 kg	1.31	1.44	1.24	0.96	0.82	1.14	1.16
45-54 kg	1.19	1.34	1.13	0.91	0.67	1.03	1.10

Source: CSO

Table 9.24 Average price of sheep at auction marts

€

	Price per kg (liveweight)						
	1996	1997	1998	1999	2000	2001	2002
Sheep							
30-39 kg	1.64	1.72	1.34	1.22	1.39	1.94	1.65
40-49 kg	1.57	1.67	1.45	1.32	1.42	1.99	1.72
50-59 kg	1.51	1.60	1.29	1.24	1.39	1.95	1.70

Source: CSO

Table 9.25 Milk – price per litre paid by creameries to producers

€

	1995	1996	1997	1998	1999	2000	2001	2002
Milk - price per litre								
Actual fat content	0.295	0.296	0.274	0.291	0.284	0.293	0.307	0.283
Standardised at 3.7%	0.301	0.302	0.278	0.292	0.284	0.293	0.305	0.281

Source: CSO

TABLE 9.22

TABLE 9.23

TABLE 9.24

TABLE 9.25

Table 9.26 Cereal supply balance

000 tonnes

	1997-98	1998-99	1999-00	2000-01	2001-02
Production	1,944	1,865	2,011	2,174	2,165
Imports	644	873	858	665	638
Total availability	2,588	2,738	2,869	2,839	2,803
Exports	474	376	299	458	406
Stock change	-90	72	24	-5	-54
Domestic uses	2,204	2,290	2,546	2,385	2,450
Other uses	1,826	1,897	2,162	2,006	2,040
Available for human consumption	378	392	384	379	410
Available for human consumption - per person kg	102.1	105.8	102.6	100.0	106.7

Source: CSO

Table 9.27 Meat supply balance

000 tonnes

	1998	1999	2000	2001	2002
Production	1,049	1,113	1,018	1,025	964
Imports	84	88	105	116	112
Total availability	1,133	1,201	1,123	1,141	1,076
Exports	711	830	725	547	686
Stock change	54	-11	22	234	25
Domestic uses	369	383	377	361	365
Available for human consumption - per person kg	99.5	102.3	99.5	93.9	93.1

Source: CSO

Domestic uses of meat

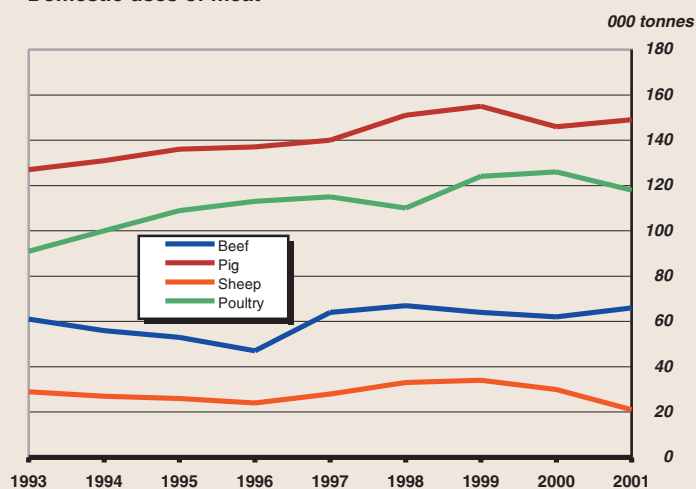


TABLE 9.26

TABLE 9.27

Table 9.28 Milk output and use (whole milk only)

	<i>million litres</i>				
	1998	1999	2000	2001	2002
Milk sold off farms	4,944	4,973	5,012	5,184	5,036
Milk used in farm households	45	45	36	36	35
Imported milk	282	361	304	n/a	279
Total milk output	5,271	5,379	5,352	5,220	5,071
<i>of which:</i>					
Used for liquid consumption	526	509	498	502	496
Used in the manufacture of:					
Butter	2,920	3,014	3,016	2,968	3,104
Cheese	966	1,032	999	1,256	1,186
Cream	251	243	229	225	213
Whole milk powder	309	339	322	327	250
Chocolate crumb	112	122	147	132	132
Miscellaneous products	494	525	489	642	695

Source: CSO

Table 9.29 Livestock slaughtering

	<i>000 head</i>				
	1998	1999	2000	2001	2002
Cattle	1,922	2,133	1,886	1,893	1,782
Pigs	3,392	3,488	3,151	3,255	3,109
Sheep	4,325	4,523	4,117	3,903	3,307

Source: CSO

Livestock slaughtering

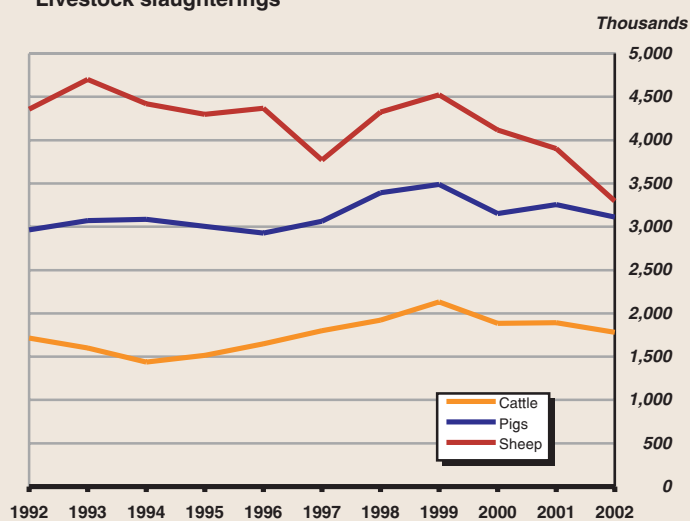


TABLE 9.28

TABLE 9.29

Table 9.30 Sea fish landings by species

Species	Tonnes live weight			Value €000		
	1999	2000	2001	1999	2000	2001
Total	279,230	272,482	293,868	189,467	188,866	206,161
Demersal	39,431	36,680	42,089	65,995	65,189	77,600
Brill	126	120	96	639	729	712
Cod	3,860	2,928	2,831	6,154	6,071	8,031
Dogfish	1,645	1,361	1,937	904	840	1,763
Dover Sole	492	376	356	3,858	3,321	3,678
Haddock	4,898	5,812	5,945	5,289	6,774	6,945
Hake	2,090	2,037	1,112	7,005	6,548	3,858
John Dory	145	174	173	535	600	711
Lemon Sole	531	468	443	965	798	1,070
Ling	1,138	1,089	1,318	1,045	1,069	1,464
Megrim	3,162	3,364	3,705	7,939	8,437	8,783
Monk/Angler	4,298	3,838	3,183	11,324	11,534	9,891
Plaice	1,424	1,029	824	2,945	2,301	2,074
Ray/Skate	2,283	2,077	2,173	2,439	2,546	3,338
Saithe	1,704	1,741	2,080	1,574	1,379	1,829
Turbot	261	236	186	2,124	2,226	1,724
White Pollack	1,049	1,131	1,447	1,318	1,314	2,170
Whiting	7,643	6,505	6,877	6,820	5,866	6,405
Witch	713	552	865	999	882	1,469
Other demersal	1,967	1,842	6,539	2,117	1,956	11,686
Pelagic	211,264	206,282	222,666	68,063	65,897	66,116
Blue Whiting	33,687	21,693	29,909	2,365	1,243	2,240
Herring	45,334	42,114	41,238	8,849	9,555	10,048
Horse Mackerel	58,201	55,438	63,639	20,219	15,429	18,188
Mackerel	59,609	70,183	69,627	19,750	28,786	27,638
Sprat	5,826	6,032	455	1,791	1,898	85
Tuna	4,909	3,486	2,411	13,638	7,407	4,429
Other pelagic	3,699	7,337	15,387	1,450	1,580	3,488
Shellfish	28,534	29,520	29,113	55,410	57,780	62,446
Blue Mussel	503	1,053	832	195	316	141
Crab	8,550	10,295	11,138	10,705	12,699	15,353
Crawfish	35	42	115	794	748	2,483
Dublin Bay Prawns	4,603	4,077	4,277	15,522	16,192	19,044
Escallop	1,497	1,577	1,131	4,232	4,006	3,086
Lobster	597	605	685	7,807	8,378	10,637
Periwinkle	3,014	2,634	1,766	2,863	3,482	1,723
Prawn Tails	3,889	3,632	2,102	5,183	4,647	2,955
Shrimp	551	449	253	3,570	3,055	2,025
Squid	282	322	315	711	520	607
Whelk	4,561	4,474	6,363	2,573	2,794	4,040
Other shellfish	452	359	136	1,254	942	352

Source: Department of the Marine and Natural Resources

TABLE 9.30

Table 9.31 Sea fish landings by consumption category

Category	Tonnes live weight				Value €000			
	1998	1999	2000	2001	1998	1999	2000	2001
Total	320,163	279,230	272,482	293,868	192,342	189,467	188,866	206,161
Human consumption	189,738	169,014	172,484	178,663	146,149	157,876	153,643	167,684
Foreign ports	94,202	72,361	75,265	79,890	42,055	28,090	33,397	35,030
Fish meal	36,223	37,854	24,734	35,315	4,137	3,501	1,826	3,448

Source: Department of the Marine and Natural Resources

Table 9.32 Aquaculture production

Species	Tonnes				Value €000			
	1998	1999	2000	2001	1998	1999	2000	2001
Aquaculture	39,980	43,856	51,247	60,935	77,192	85,983	95,354	107,109
Shellfish	23,200	23,516	31,110	35,853	16,950	21,639	21,512	27,944
Finfish	16,780	20,340	20,137	25,082	60,243	64,344	73,840	79,166
Salmon	14,860	18,076	17,648	23,312	49,253	54,797	61,445	70,869

Source: Bord Iascaigh Mhara

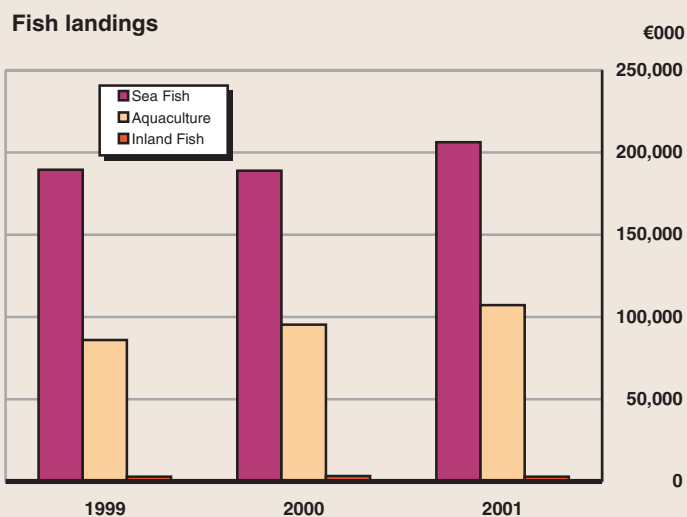


TABLE 9.31

TABLE 9.32

Table 9.33 Inland fish catches

Species	Tonnes				Value €000			
	1998	1999	2000	2001	1998	1999	2000	2001
Inland	895	775	881	900	3,437	2,885	3,359	2,992
Salmon	624	515	621	792	2,273	1,863	2,239	2,455
Other	271	260	260	108	1,164	1,022	1,120	537

Source: Marine Institute, Central Fisheries Board and CSO

Table 9.34 Sales of commercial and rod angling licences

Type of licence	Number						
	1995	1996	1997	1998	1999	2000	2001
Commercial and rod	27,235	30,358	31,964	31,962	32,973	34,105	34,685
Commercial	2,111	2,097	2,083	2,114	2,015	1,942	1,960
Drift	768	778	852	871	872	871	880
Draft	468	497	492	494	461	445	504
Other	875	822	739	749	682	626	576
Rod	25,124	28,261	29,881	29,848	30,958	32,163	32,725

Source: Central Fisheries Board

Table 9.35 Coillte Teoranta-owned forest properties

Description	Unit	1998	1999	2000	2001	2002
Land held at 31 December	Ha	436,000	438,000	440,000	441,000	442,000
Land acquired	Ha	1,677	1,411	538	133	68
Land planted	Ha	9,897	10,396	11,045	10,307	10,006
Timber sold	Million metre ³	2.36	2.51	2.73	2.55	2.71
Forest roads built	Km	120	107	102	124	126
Average levels of industrial employment	No.	534	553	511	490	605
Total amount of wages paid	€m	10.1	10.3	13.3	13.7	14.1

Source: Coillte Teoranta

TABLE 9.33

TABLE 9.34

TABLE 9.35

Table 9.36 Border, Midland and Western regional agricultural accounts

€m

	1995	1996	1997	1998	1999	2000	2001
Livestock	968.6	972.8	931.7	914.6	865.3	916.8	931.3
<i>of which:</i>							
cattle	630.2	569.4	536.9	546.5	514.7	532.8	480.7
pigs	135.2	160.8	143.9	127.8	112.7	131.2	155.6
sheep	95.5	122.2	117.5	110.7	100.8	105.0	147.5
Livestock products	390.6	394.5	368.0	377.4	359.1	373.1	406.5
<i>of which:</i>							
milk	363.4	367.8	341.8	353.3	338.2	345.4	379.5
Crops	358.8	349.5	327.1	333.2	360.4	362.2	381.4
<i>of which:</i>							
cereals	34.9	38.8	32.1	27.3	32.9	36.8	33.9
root crops	48.2	35.5	23.7	37.3	47.2	26.4	32.1
forage plants	177.3	163.3	156.2	151.3	157.5	172.4	184.4
Goods output at producer prices	1,718.1	1,716.8	1,626.7	1,625.2	1,584.7	1,652.1	1,719.2
Contract work	74.3	77.9	83.5	82.0	91.0	97.1	108.2
Subsidies on products less taxes on products	325.1	364.0	360.6	404.5	334.8	392.6	288.4
Agricultural output at basic prices	2,117.5	2,158.8	2,070.8	2,111.8	2,010.5	2,141.9	2,115.8
Intermediate consumption	955.6	963.1	940.7	987.4	1,027.2	1,046.0	1,101.7
<i>of which:</i>							
feedingstuffs	333.2	330.5	319.5	352.6	364.8	356.7	371.8
fertilisers	109.1	112.6	95.0	97.8	103.2	99.4	103.7
energy and lubricants	72.6	79.5	80.0	80.4	86.5	100.8	104.3
forage plants	174.7	161.5	155.0	150.0	156.0	170.8	182.7
contract work	74.3	77.9	83.5	82.0	91.0	97.1	108.2
Gross value added at basic prices	1,161.9	1,195.7	1,130.1	1,124.4	983.3	1,095.9	1,014.0
Fixed capital consumption	180.9	195.2	199.1	201.3	200.8	199.7	221.4
Net value added at basic prices	981.0	1,000.5	931.0	923.1	782.6	896.2	792.6
Other subsidies less taxes on production	89.1	161.3	194.0	216.0	229.0	243.5	383.8
Factor income	1,070.0	1,161.8	1,125.0	1,139.1	1,011.6	1,139.7	1,176.4
Compensation of employees	67.7	66.6	69.2	71.8	88.2	92.5	90.6
Operating surplus	1,002.3	1,095.2	1,055.8	1,067.3	923.3	1,047.2	1,085.8

Source: CSO

Table 9.37 Southern and Eastern regional agricultural accounts

€m

	1995	1996	1997	1998	1999	2000	2001
Livestock	1,388.6	1,365.6	1,295.6	1,270.6	1,223.2	1,256.4	1,246.2
<i>of which:</i>							
cattle	1,026.5	922.1	852.9	855.1	820.9	833.6	765.3
pigs	161.5	197.2	194.5	156.6	140.6	163.6	194.0
sheep	96.5	120.9	113.6	103.7	97.6	98.4	136.7
Livestock products	1,192.1	1,181.6	1,084.8	1,089.2	1,079.8	1,111.9	1,195.1
<i>of which:</i>							
milk	1,175.1	1,168.2	1,072.7	1,077.9	1,070.2	1,100.6	1,184.5
Crops	727.9	722.5	626.8	659.6	689.9	698.1	715.9
<i>of which:</i>							
cereals	138.5	162.2	127.9	115.8	131.1	148.4	136.0
root crops	161.3	135.0	100.7	142.1	145.9	112.9	130.2
forage plants	312.8	289.2	277.7	273.6	281.0	290.8	289.4
Goods output at producer prices	3,308.6	3,269.7	3,007.2	3,019.4	2,992.9	3,066.4	3,157.2
Contract work	160.4	167.5	166.9	168.5	181.9	191.3	208.4
Subsidies on products less taxes on products	350.9	389.0	408.4	455.6	380.9	451.2	397.4
Agricultural output at basic prices	3,819.9	3,826.2	3,582.4	3,643.6	3,555.7	3,708.9	3,763.0
Intermediate consumption	1,789.9	1,824.5	1,731.4	1,780.7	1,817.1	1,878.6	1,953.9
<i>of which:</i>							
feedingstuffs	476.3	478.3	430.2	478.7	496.0	474.5	506.2
fertilisers	259.6	271.3	232.3	230.9	235.1	237.3	246.6
energy and lubricants	131.7	147.8	150.7	146.8	156.9	198.0	194.1
forage plants	308.2	286.0	275.6	271.3	278.4	288.1	286.8
contract work	160.4	167.5	166.9	168.5	181.9	191.3	208.4
Gross value added at basic prices	2,030.0	2,001.7	1,851.1	1,862.9	1,738.6	1,830.2	1,809.1
Fixed capital consumption	314.7	321.0	331.0	343.7	362.3	383.4	390.1
Net value added at basic prices	1,715.3	1,680.8	1,520.1	1,519.2	1,376.3	1,446.8	1,419.0
Other subsidies less taxes on production	91.9	169.2	177.6	192.6	200.8	207.3	310.6
Factor income	1,807.2	1,850.0	1,697.7	1,711.9	1,577.1	1,654.1	1,729.7
Compensation of employees	212.7	187.3	187.3	197.2	189.1	191.9	201.5
Operating surplus	1,594.5	1,662.7	1,510.4	1,514.7	1,388.0	1,462.3	1,528.2

Source: CSO

Table 9.38 Regional agricultural accounts, main items for each region

€m

	1995	1996	1997	1998	1999	2000	2001
Cattle							
Border, Midland and Western	630.2	569.4	536.9	546.5	514.7	532.8	480.7
Southern and Eastern	1,026.5	922.1	852.9	855.1	820.9	833.6	765.3
Total	1,656.7	1,491.5	1,389.9	1,401.7	1,335.5	1,366.4	1,245.9
Sheep							
Border, Midland and Western	95.5	122.2	117.5	110.7	100.8	105.0	147.5
Southern and Eastern	96.5	120.9	113.6	103.7	97.6	98.4	136.7
Total	192.0	243.1	231.1	214.4	198.5	203.4	284.2
Pigs							
Border, Midland and Western	135.2	160.8	143.9	127.8	112.7	131.2	155.6
Southern and Eastern	161.5	197.2	194.5	156.6	140.6	163.6	194.0
Total	296.6	358.1	338.4	284.4	253.3	294.8	349.7
Milk							
Border, Midland and Western	363.4	367.8	341.8	353.3	338.2	345.4	379.5
Southern and Eastern	1,175.1	1,168.2	1,072.7	1,077.9	1,070.2	1,100.6	1,184.5
Total	1,538.5	1,536.0	1,414.5	1,431.2	1,408.4	1,446.0	1,564.0
Cereals							
Border, Midland and Western	34.9	38.8	32.1	27.3	32.9	36.8	33.9
Southern and Eastern	138.5	162.2	127.9	115.8	131.1	148.4	136.0
Total	173.4	200.9	160.0	143.1	164.1	185.1	169.8
Goods output at producer prices							
Border, Midland and Western	1,718.1	1,716.8	1,626.7	1,625.2	1,584.7	1,652.1	1,719.2
Southern and Eastern	3,308.6	3,269.7	3,007.2	3,019.4	2,992.9	3,066.4	3,157.2
Total	5,026.7	4,986.5	4,633.9	4,644.7	4,577.7	4,718.5	4,876.4
Intermediate consumption							
Border, Midland and Western	955.6	963.1	940.7	987.4	1,027.2	1,046.0	1,101.7
Southern and Eastern	1,789.9	1,824.5	1,731.4	1,780.7	1,817.1	1,878.6	1,953.9
Total	2,745.6	2,787.5	2,672.0	2,768.1	2,844.3	2,924.6	3,055.7
Net subsidies							
Border, Midland and Western	414.2	525.3	554.6	620.5	563.8	636.1	672.1
Southern and Eastern	442.7	558.2	585.9	648.3	581.7	658.5	708.0
Total	856.9	1,083.5	1,140.6	1,268.8	1,145.6	1,294.6	1,380.1
Operating surplus							
Border, Midland and Western	1,002.3	1,095.2	1,055.8	1,067.3	923.3	1,047.2	1,085.8
Southern and Eastern	1,594.5	1,662.7	1,510.4	1,514.7	1,388.0	1,462.3	1,528.2
Total	2,596.8	2,757.9	2,566.2	2,582.0	2,311.3	2,509.5	2,614.0

Source: CSO

