



An Phríomh-Oifig Staidrimh
Central Statistics Office

Vital Statistics

Third Quarter

2012

Published by the Stationery Office, Dublin, Ireland.

Available from:

Central Statistics Office, Information Section, Skehard Road, Cork.

Compiled by the Central Statistics Office on behalf of the Department of Social Protection.

[No. 595]

February 2013

© Government of Ireland 2013

Material compiled and presented by
Central Statistics Office.

Reproduction is authorised, except for commercial
purposes, provided the source is acknowledged.

Print ISSN 2009-5325

On-line ISSN 2009-5333

Contents

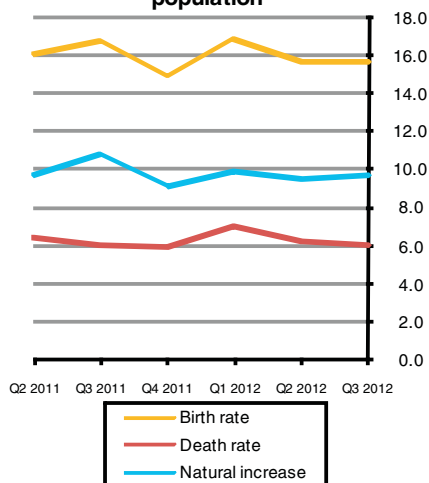
Third Quarter 2012

	Page
Commentary	4
Tables	
Table 1a	8
Table 1b	8
Table 2a	9
Table 2b	9
Table 3	10
Table 4	11
Table 5	12
Table 6	13
Table 7	14
Table 8	15
Table 9	16
Table 10	17
Table 11	17
Table 12	18
Table 13	19
Table 14	20
Table 15	22
Table 16	24
Table 17	26
Background Notes	27
Glossary of terms	28
Appendix	
Causes of death Eurostat shortlist (August 1998)	30
Estimated population classified by sex and age group, 2007-2012	31

Third Quarter 2012

Commentary

Fig. 1.1 Annual birth, death and natural increase rates per 1,000 population



This report has been prepared by the Central Statistics Office for the Minister for Social Protection in accordance with the provisions of Section 2 of the Vital Statistics and Births, Deaths and Marriages Registration Act, 1952, Section 73 of the Civil Registration Act 2004 and Government Order SI No. 831 of 2007.

Births

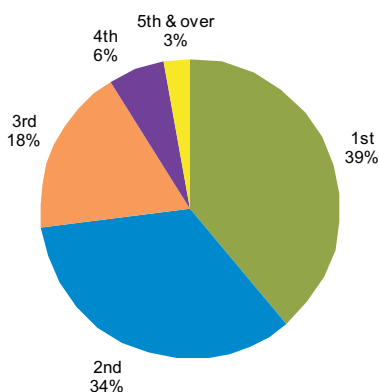
There were 17,985 births registered in quarter 3 of 2012, 9,208 males and 8,777 females. The corresponding total for quarter 3 2011 was 1,237 higher at 19,222 births, while the quarter 3 2007 total was 569 higher at 18,554 births. The quarter 3 2012 total is 13% higher than in 2003 when 15,909 babies were registered. See tables 1, 3, 4 and 5.

The 17,985 births represent an annual birth rate of 15.7 per 1,000 of the population, 1.1 per thousand lower than quarter 3 of 2011. See tables 1, 4, 5 and fig. 1.1.

Birth order

A total of 6,974 births (38.9%) were to first time mothers in quarter 3 of 2012. Second time mothers had 6,138 births (34.2%). First births in the third quarter of 2011 and 2007 accounted for 39.3% and 41.4% of all births, respectively. The number of first births registered in quarter 3 2003 was 6,240 (39.6%). See tables 1, 3, 4, 6 and fig. 1.2.

Fig. 1.2 Birth Order Q3 2012



Age of mothers

The average age of mothers for births registered in quarter 3 2012 was 32.0 years, 0.3 years more than the corresponding figure in quarter 3 2011, 0.9 years more than in quarter 3 2007, and 1.4 years more than in quarter 3 2003. The average age of mothers having their first child in quarter 3 2012 was 30.0 years. See tables 3, 9 and fig. 1.3.

Births within civil partnership

There were no births registered as being within civil partnerships in quarter 3 2012.

Births outside marriage/civil partnership

There were 6,250 births registered as outside marriage/civil partnership in quarter 3 of 2012. This accounted for 34.8% of all births, an increase of 0.8 percentage points on quarter 3 2011 and an increase of 2.4 percentage points on quarter 3 2007. The highest percentage of births outside marriage/civil partnership was in Limerick City at 56.0%, while the lowest percentage of births outside marriage/civil partnership was in Galway County at 22.1%. In quarter 3 2003, 4,981 births were registered outside marriage or 31.3% of all births. See tables 1, 3, 4, 8 and 10.

The average age of mothers at maternity outside of marriage/civil partnership, was 29.0 years. This ranged from 27.3 years in Carlow to 31.4 years in Dun Laoghaire Rathdown. See table 10.

Deaths

There were 6,825 deaths registered in quarter 3 2012, 3,589 males and 3,236 females. The quarter 3 2012 total is 1.2% lower than in the corresponding quarter of 2011 and 5.7% higher than in quarter 3 2007, when 6,911 and 6,455 deaths were registered respectively. See tables 2, 3, 12 and fig. 1.1.

Fig. 1.3 Average age at maternity Q3 2012

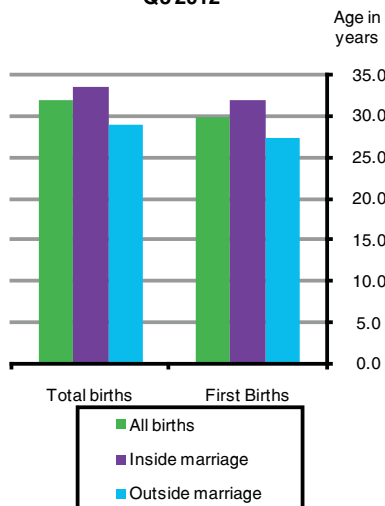


Fig. 1.4 Infant and neonatal mortality rates per 1,000 live births

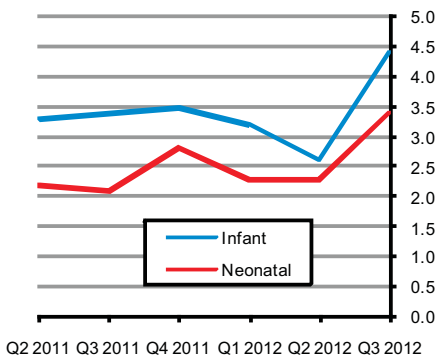
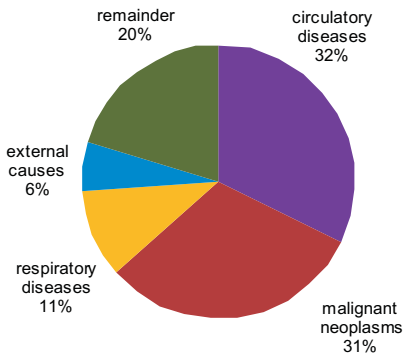


Fig. 1.5 Principal causes of death, Q3 2012



Age at death

There were 79 infant deaths registered in quarter 3 2012 giving an infant mortality rate of 4.4 deaths per 1,000 live births. Neonatal deaths are deaths of infants at ages under 4 weeks. There were 61 neonatal deaths registered in quarter 3 2012, a neonatal mortality rate of 3.4 deaths per 1,000 live births. See tables 3, 4 and fig.1.4.

There were 5,257 deaths of persons aged 65 and over registered in quarter 3 2012. This represents an annual death rate of 38.3 per 1,000 population aged 65 and over and represents a decrease of 4% when compared with the corresponding quarter of 2011. See tables 3 and 4.

Cause of death

• **Diseases of the Heart and Arteries:**

Diseases of the Circulatory System accounted for 2,204 deaths, or an annual rate of 1.9 per 1,000 population. Of these, 1,118 were due to Ischaemic Heart Disease and 419 to Cerebrovascular Disease. See tables 2, 14 and fig.1.5.

• **Malignant Cancers:**

There were 2,120 deaths from malignant neoplasms. This is equivalent to an annual rate of 1.8 per 1,000 population. See tables 2, 14 and fig.1.5.

• **Lung Diseases:**

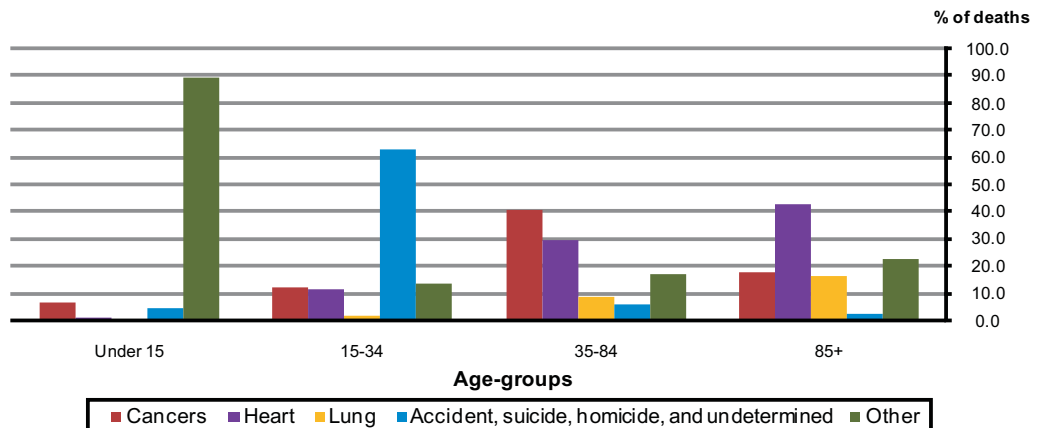
Deaths from pneumonia numbered 226; chronic lower respiratory disease accounted for 315 deaths and 178 deaths resulted from other respiratory diseases. See tables 2, 14 and fig.1.5.

• **Accidents, suicides and other:**

There were 402 deaths due to accidents, suicides and other external causes. Accidents accounted for 54.5% (219) of these deaths, while suicides accounted for 33.8% (136). Of these 402 deaths, 73.1% were male. See tables 2, 14 and fig.1.5.

The leading cause of death in quarter 3 2012 varied widely by age group. Among adults aged 15 to 34, external causes of death including accidents, suicide and other ranked first. Among individuals aged 35-84, cancers were the leading cause, while for those aged 85 and older, it was diseases of the heart and arteries. See tables 14 and fig.1.6.

Fig. 1.6 Causes of death classified by age-groups, quarter 3 2012



Natural increase

The natural increase in the population (births minus deaths) for quarter 3 2012 was 11,160. This represents a rate of 9.7 per 1,000 population, 1.1 per thousand lower than quarter 3 of 2011. See *tables 3, 4 and fig.1.1*.

Marriages

The number of marriages registered during the quarter was 7,765, equivalent to an annual marriage rate of 6.8 per 1,000 population, 0.2 per 1,000 population above the corresponding quarter of 2011. The quarter 3 2012 total is 2.9% lower than in quarter 3 2003 when 7,996 marriages were registered. See *tables 1, 3 and 4*.

Civil Partnerships

Civil Partnership legislation was introduced in Ireland on the 4th January 2011. The number of civil partnerships registered in the third quarter of 2012 was 104. This is equivalent to an annual rate of 0.09 per 1,000 population and is 0.09 per 1,000 population below the rate for the corresponding quarter of 2011. See *tables 1, 3 and 4*.

Population

The estimated population (usual residence) in April 2012 was 4,585,400.

Tables

Table 1a Marriages, Civil Partnerships and births by quarter, 2007, 2011 and 2012

Event	Q3 of 2007			Q3 of 2011			Q2 of 2012			Q3 of 2012		
	Number	% of total	Rate ¹	Number	% of total	Rate ¹	Number	% of total	Rate ¹	Number	% of total	Rate ¹
Marriages	8,949	100.0	8.2	7,538	100.0	6.6	5,421	100.0	4.7	7,765	100.0	6.8
Civil Partnerships²	-	-	-	204	100.0	0.18	120	100.0	0.10	104	100.0	0.09
Live Births total	18,554	100.0	17.0	19,222	100.0	16.8	17,958	100.0	15.7	17,985	100.0	15.7
<i>of which;</i>												
inside marriage/CP*	12,535	67.6	11.5	12,679	66.0	11.1	11,794	65.7	10.3	11,735	65.2	10.2
outside marriage/CP*	6,019	32.4	5.5	6,543	34.0	5.7	6,164	34.3	5.4	6,250	34.8	5.5
Sex of child												
Male	9,462	51.0	8.6	9,848	51.2	8.6	9,236	51.4	8.1	9,208	51.2	8.0
Female	9,092	49.0	8.3	9,374	48.8	8.2	8,722	48.6	7.6	8,777	48.8	7.7
Residence of mother												
Border	1,759	9.5	14.5	1,993	10.4	15.5	1,869	10.4	14.6	1,900	10.6	14.9
Midland	1,165	6.3	17.8	1,207	6.3	17.1	1,178	6.6	16.4	1,091	6.1	15.2
West	1,703	9.2	16.1	1,678	8.7	15.1	1,649	9.2	15.1	1,649	9.2	15.1
Dublin	5,245	28.3	17.0	5,528	28.8	17.4	5,336	29.7	16.9	5,323	29.6	16.9
Mid-East	2,548	13.7	20.5	2,464	12.8	18.6	2,231	12.4	16.5	2,254	12.5	16.7
Mid-West	1,594	8.6	17.4	1,628	8.5	17.2	1,383	7.7	14.6	1,403	7.8	14.8
South-East	1,958	10.6	16.5	2,088	10.9	16.8	1,842	10.3	14.7	1,833	10.2	14.6
South-West	2,582	13.9	16.2	2,636	13.7	15.9	2,470	13.8	14.8	2,532	14.1	15.2
Previous no. of liveborn children												
0	7,643	41.2	7.0	7,514	39.1	6.6	6,718	37.4	5.9	6,974	38.8	6.1
1	5,879	31.7	5.4	6,557	34.1	5.7	6,454	35.9	5.6	6,138	34.1	5.4
2	3,180	17.1	2.9	3,376	17.6	2.9	3,080	17.2	2.7	3,225	17.9	2.8
3	1,146	6.2	1.0	1,136	5.9	1.0	1,084	6.0	0.9	1,081	6.0	0.9
4	363	2.0	0.3	324	1.7	0.3	360	2.0	0.3	305	1.7	0.3
5 or more	238	1.3	0.2	231	1.2	0.2	212	1.2	0.2	214	1.2	0.2
Not stated	105	0.6	0.1	84	0.4	0.1	50	0.3	0.0	48	0.3	0.0
Nationality												
Ireland	-	-	-	14,925	77.6	13.0	13,546	75.4	11.8	13,735	76.4	12.0
United Kingdom	-	-	-	309	1.6	0.3	386	2.1	0.3	365	2.0	0.3
Other EU15	-	-	-	281	1.5	0.2	258	1.4	0.2	244	1.4	0.2
Accession states	-	-	-	2,124	11.0	1.9	2,024	11.3	1.8	2,018	11.2	1.8
Other	-	-	-	1,469	7.6	1.3	1,534	8.5	1.3	1,474	8.2	1.3
Not stated	-	-	-	114	0.6	0.1	210	1.2	0.2	149	0.8	0.1
Total	-	-	-	19,222	100.0	16.8	17,958	100.0	15.7	17,985	100.0	15.7

¹ Rate per year per 1,000 population. Rates based on estimated usual residence population for given year. Rates for residence of mother are based on census/estimated regional population for given year.

² Civil Partnership was introduced in Ireland on 4th January 2011.

* CP denotes "Civil Partnership".

Table 1b Births classified by age of mother at maternity by quarter, 2007, 2011 and 2012 and their corresponding annual age specific (asfr) and total period fertility rates (tpfr)

Age	Q3 of 2007			Q3 of 2011			Q2 of 2012			Q3 of 2012		
	Number	% of total	Fertility rate	Number	% of total	Fertility rate	Number	% of total	Fertility rate	Number	% of total	Fertility rate
< 20 years	602	3.2	17.1	436	2.3	12.6	388	2.2	11.5	402	2.2	12.0
20-24 years	2,311	12.5	53.5	1,924	10.0	51.1	1,789	10.0	51.4	1,707	9.5	49.1
25-29 years	4,390	23.7	87.6	4,356	22.7	93.0	3,911	21.8	88.0	3,838	21.3	86.4
30-34 years	6,446	34.7	147.1	6,985	36.3	140.3	6,437	35.8	128.1	6,506	36.2	129.5
35-39 years	4,038	21.8	99.4	4,508	23.5	99.1	4,428	24.7	96.9	4,530	25.2	99.1
40-44 years	729	3.9	19.2	972	5.1	23.6	948	5.3	22.7	947	5.3	22.7
45+ years	33	0.2	0.9	37	0.2	1.0	52	0.3	1.3	53	0.3	1.4
Not stated	5	0.0	-	4	0.0	-	5	0.0	-	2	0.0	-
Total	18,554	100.0	2.1	19,222	100.0	2.1	17,958	100.0	2.0	17,985	100	2.0

Table 2a Deaths registered by cause of death and by quarter, 2007, 2011 and 2012

Quarter	Malignant Cancers		Diseases of the heart and arteries		Lung diseases		Accidents, Suicides & Others		Other Causes		Total	% of total
		% of total		% of total		% of total		% of total		% of total		
Q3 of 2012	2,120	31.1	2,204	32.3	719	10.5	402	5.9	1,380	20.2	6,825	100.0
Q2 of 2012	2,037	28.8	2,314	32.7	892	12.6	384	5.4	1,453	20.5	7,080	100.0
Q3 of 2011	2,163	31.3	2,265	32.8	759	11.0	462	6.7	1,262	18.3	6,911	100.0
Q3 of 2007	1,942	30.1	2,259	35.0	729	11.3	334	5.2	1,191	18.5	6,455	100.0

Table 2b Deaths registered by cause of death, by age and region, Third Quarter 2012

Age (years)	Malignant Cancers		Diseases of the heart and arteries		Lung diseases		Accidents, Suicides & Others		Other Causes		Total	% of total
		% of total		% of total		% of total		% of total		% of total		
Persons												
Under 1	-	0.0	-	0.0	-	0.0	-	0.0	79	5.7	79	1.2
1 - 4	-	0.0	1	0.0	-	0.0	-	0.0	8	0.6	9	0.1
5 - 14	5	0.2	-	0.0	-	0.0	4	1.0	4	0.3	13	0.2
15 - 24	10	0.5	5	0.2	1	0.1	57	14.2	9	0.7	82	1.2
25 - 34	11	0.5	16	0.7	2	0.3	59	14.7	16	1.2	104	1.5
35 - 44	57	2.7	22	1.0	3	0.4	57	14.2	46	3.3	185	2.7
45 - 54	156	7.4	84	3.8	13	1.8	61	15.2	76	5.5	390	5.7
55 - 64	335	15.8	192	8.7	35	4.9	52	12.9	92	6.7	706	10.3
65 - 74	546	25.8	349	15.8	107	14.9	38	9.5	163	11.8	1,203	17.6
75 - 84	648	30.6	635	28.8	224	31.2	32	8.0	385	27.9	1,924	28.2
85 +	352	16.6	900	40.8	334	46.5	42	10.4	502	36.4	2,130	31.2
Total	2,120	100.0	2,204	100.0	719	100.0	402	100.0	1,380	100.0	6,825	100.0
Males												
Under 1	-	0.0	-	0.0	-	0.0	-	0.0	36	2.6	36	0.5
1 - 4	-	0.0	-	0.0	-	0.0	-	0.0	5	0.4	5	0.1
5 - 14	2	0.1	-	0.0	-	0.0	2	0.5	1	0.1	5	0.1
15 - 24	7	0.3	5	0.2	-	0.0	48	11.9	6	0.4	66	1.0
25 - 34	7	0.3	10	0.5	2	0.3	50	12.4	8	0.6	77	1.1
35 - 44	27	1.3	18	0.8	2	0.3	48	11.9	27	2.0	122	1.8
45 - 54	66	3.1	59	2.7	7	1.0	44	10.9	54	3.9	230	3.4
55 - 64	180	8.5	147	6.7	18	2.5	39	9.7	56	4.1	440	6.4
65 - 74	311	14.7	239	10.8	73	10.2	29	7.2	101	7.3	753	11.0
75 - 84	377	17.8	357	16.2	127	17.7	20	5.0	200	14.5	1,081	15.8
85 +	165	7.8	299	13.6	129	17.9	14	3.5	167	12.1	774	11.3
Total	1,142	53.9	1,134	51.5	358	49.8	294	73.1	661	47.9	3,589	52.6
Females												
Under 1	-	0.0	-	0.0	-	0.0	-	0.0	43	3.1	43	0.6
1 - 4	-	0.0	1	0.0	-	0.0	-	0.0	3	0.2	4	0.1
5 - 14	3	0.1	-	0.0	-	0.0	2	0.5	3	0.2	8	0.1
15 - 24	3	0.1	-	0.0	1	0.1	9	2.2	3	0.2	16	0.2
25 - 34	4	0.2	6	0.3	-	0.0	9	2.2	8	0.6	27	0.4
35 - 44	30	1.4	4	0.2	1	0.1	9	2.2	19	1.4	63	0.9
45 - 54	90	4.2	25	1.1	6	0.8	17	4.2	22	1.6	160	2.3
55 - 64	155	7.3	45	2.0	17	2.4	13	3.2	36	2.6	266	3.9
65 - 74	235	11.1	110	5.0	34	4.7	9	2.2	62	4.5	450	6.6
75 - 84	271	12.8	278	12.6	97	13.5	12	3.0	185	13.4	843	12.4
85 +	187	8.8	601	27.3	205	28.5	28	7.0	335	24.3	1,356	19.9
Total	978	46.1	1,070	48.5	361	50.2	108	26.9	719	52.1	3,236	47.4
Region												
Border	237	11.2	263	11.9	106	14.7	43	10.7	175	12.7	824	12.1
Midland	122	5.8	127	5.8	41	5.7	14	3.5	67	4.9	371	5.4
West	224	10.6	220	10.0	88	12.2	53	13.2	125	9.1	710	10.4
Dublin	591	27.9	586	26.6	187	26.0	116	28.9	406	29.4	1,886	27.6
Mid-East	193	9.1	175	7.9	54	7.5	42	10.4	119	8.6	583	8.5
Mid-West	193	9.1	218	9.9	62	8.6	24	6.0	124	9.0	621	9.1
South-East	242	11.4	253	11.5	90	12.5	39	9.7	144	10.4	768	11.3
South-West	318	15.0	362	16.4	91	12.7	71	17.7	220	15.9	1,062	15.6
Total	2,120	100.0	2,204	100.0	719	100.0	402	100.0	1,380	100.0	6,825	100.0

Table 3 Marriages, civil partnerships, births, deaths and natural increase

	Marriages ¹	Civil Partnerships	Live Births				Deaths ²				Natural Increase
			Total	First	Outside marriage/civil partnerships	Average Age	Total	Infant	Neo-natal	65 & over	
Quarter 1											
2003	2,571	-	15,238	6,158	5,080	30.3	7,756	67	52	6,259	7,482
2004	2,755	-	15,599	6,082	5,181	30.7	7,873	72	56	6,347	7,726
2005	2,892	-	15,334	6,290	5,147	30.9	7,352	65	47	5,920	7,982
2006	3,329	-	15,958	6,449	5,481	30.9	7,320	56	36	6,040	8,638
2007	3,401	-	17,473	7,226	5,905	31.1	7,910	48	37	6,326	9,563
2008	3,228	-	19,154	8,088	6,480	31.1	7,525	63	42	6,011	11,629
2009	3,450	-	19,437	8,173	6,621	31.2	8,419	59	41	6,739	11,018
2010	3,372	-	19,787	8,312	6,829	31.4	8,006	62	39	6,419	11,781
2011	3,052	6	19,950	8,008	6,768	31.7	8,093	72	60	6,455	11,857
2012	2,827	82	19,313	7,693	6,929	31.8	7,979	61	45	6,445	11,334
Quarter 2											
2003	4,827	-	15,582	6,095	4,689	30.6	7,203	83	59	5,625	8,379
2004	4,953	-	15,535	5,897	4,874	30.8	6,881	74	53	5,351	8,654
2005	5,374	-	15,306	5,922	4,810	31.1	7,349	70	52	5,826	7,957
2006	5,274	-	15,979	6,315	5,056	31.1	6,967	65	44	5,488	9,012
2007	5,558	-	17,127	6,926	5,428	31.2	6,902	60	34	5,394	10,225
2008	5,351	-	19,040	7,712	6,174	31.2	7,569	90	62	5,857	11,471
2009	5,432	-	18,844	7,858	6,114	31.3	7,020	52	41	5,356	11,824
2010	4,993	-	18,844	7,749	6,205	31.5	6,929	84	54	5,344	11,915
2011	5,025	184	18,381	7,080	6,013	31.8	7,277	61	41	5,618	11,104
2012	5,421	120	17,958	6,718	6,164	31.9	7,080	47	41	5,629	10,878
Quarter 3											
2003	7,996	-	15,909	6,240	4,981	30.6	6,639	85	68	5,147	9,270
2004	8,376	-	15,605	6,171	5,100	30.8	6,473	72	43	5,123	9,132
2005	8,347	-	16,170	6,548	5,101	30.9	6,380	50	33	4,919	9,790
2006	8,335	-	16,920	6,891	5,541	31.0	6,657	58	46	5,146	10,263
2007	8,949	-	18,554	7,636	6,019	31.1	6,455	48	32	4,976	12,099
2008	8,751	-	19,650	8,259	6,523	31.1	6,674	67	50	5,108	12,976
2009	8,047	-	19,289	8,170	6,256	31.2	6,638	80	53	5,039	12,651
2010	7,774	-	19,171	7,815	6,481	31.4	6,517	71	48	5,010	12,654
2011	7,538	204	19,222	7,512	6,543	31.7	6,911	65	41	5,303	12,311
2012	7,765	104	17,985	6,974	6,250	32.0	6,825	79	61	5,257	11,160
Quarter 4											
2003	4,908	-	14,788	5,883	4,563	30.7	7,225	76	52	5,568	7,563
2004	4,895	-	14,945	5,975	4,783	30.9	6,924	82	62	5,253	8,021
2005	4,742	-	14,232	5,861	4,470	31.1	6,360	59	45	4,827	7,872
2006	5,151	-	15,380	6,456	5,217	31.0	6,535	58	42	4,946	8,845
2007	4,848	-	17,466	7,481	5,818	31.1	6,783	65	46	5,128	10,683
2008	4,857	-	17,880	7,608	5,904	31.2	6,424	70	46	4,871	11,456
2009	4,698	-	17,358	7,426	5,757	31.4	6,821	49	34	5,098	10,537
2010	4,455	-	17,174	7,244	5,865	31.5	6,113	65	49	4,763	11,061
2011	4,264	142	17,097	6,841	5,866	31.8	6,714	60	48	5,255	10,383
2012											
Total											
2003	20,302	-	61,517	24,376	19,313	30.6	28,823	311	231	22,599	32,694
2004	20,979	-	61,684	24,125	19,938	30.8	28,151	300	214	22,074	33,533
2005	21,355	-	61,042	24,621	19,528	31.0	27,441	244	177	21,492	33,601
2006	22,089	-	64,237	26,111	21,295	31.0	27,479	237	168	21,620	36,758
2007	22,756	-	70,620	29,269	23,170	31.1	28,050	221	149	21,824	42,570
2008	22,187	-	75,724	31,667	25,081	31.1	28,192	290	200	21,847	47,532
2009	21,627	-	74,928	31,627	24,748	31.3	28,898	240	169	22,232	46,030
2010	20,594	-	74,976	31,120	25,380	31.5	27,565	282	190	21,536	47,411
2011	19,879	536	74,650	29,441	25,190	31.8	28,995	258	190	22,631	45,655
2012											

¹ 2002 and 2004 - 2010 marriage figures are final. All other marriage figures are subject to revision.² See 'Background Notes' for changes in methodology effective from 2007.

Table 4 Annual marriage, civil partnership, birth, death and natural increase rates per 1,000 population¹

	Marriages	Civil Partnerships	Live Births			Deaths				Natural Increase
			Total	% First births ²	% Outside marriage/civil partnerships	Total	Infant ³ Mortality	Neo-natal ⁴ Mortality	65 & over	
Quarter 1										
2003	2.6	-	15.6	40.7	33.3	7.9	4.4	3.4	57.4	7.6
2004	2.8	-	15.7	40.4	33.2	7.9	4.6	3.6	57.5	7.8
2005	2.9	-	15.2	41.3	33.6	7.3	4.2	3.1	52.7	7.9
2006	3.2	-	15.4	41.1	34.3	7.1	3.5	2.3	52.6	8.4
2007	3.2	-	16.5	42.2	33.8	7.5	2.7	2.1	54.1	9.0
2008	3.0	-	17.5	42.6	33.8	6.9	3.3	2.2	51.0	10.6
2009	3.1	-	17.3	42.2	34.1	7.5	3.0	2.1	55.7	9.8
2010	3.0	-	17.5	42.1	34.5	7.1	3.1	2.0	51.5	10.4
2011	2.7	0.01	17.5	40.3	33.9	7.1	3.6	3.0	50.1	10.4
2012	2.5	0.07	16.9	40.0	35.9	7.0	3.2	2.3	48.5	9.9
Quarter 2										
2003	4.9	-	15.7	39.5	30.1	7.2	5.3	3.8	50.9	8.4
2004	4.9	-	15.4	38.8	31.4	6.8	4.8	3.4	47.6	8.6
2005	5.2	-	14.8	38.8	31.4	7.1	4.6	3.4	50.8	7.7
2006	5.0	-	15.1	41.1	31.6	6.6	4.1	2.8	46.9	8.5
2007	5.1	-	15.7	40.9	31.7	6.3	3.5	2.0	45.8	9.3
2008	4.8	-	17.0	40.8	32.4	6.8	4.7	3.3	48.4	10.2
2009	4.8	-	16.6	42.0	32.4	6.2	2.8	2.2	42.9	10.4
2010	4.4	-	16.5	41.3	32.9	6.1	4.5	2.9	41.5	10.5
2011	4.4	0.16	16.1	38.8	32.7	6.4	3.3	2.2	42.3	9.7
2012	4.7	0.10	15.7	37.5	34.3	6.2	2.6	2.3	41.0	9.5
Quarter 3										
2003	8.0	-	16.0	39.6	31.3	6.7	5.3	4.3	46.6	9.3
2004	8.3	-	15.4	39.8	32.7	6.4	4.6	2.8	45.6	9.0
2005	8.1	-	15.6	40.7	31.5	6.2	3.1	2.0	42.9	9.5
2006	7.9	-	16.0	41.6	32.7	6.3	3.4	2.7	44.0	9.7
2007	8.2	-	17.0	41.4	32.4	5.9	2.6	1.7	42.3	11.1
2008	7.8	-	17.5	42.2	33.2	6.0	3.4	2.5	42.2	11.6
2009	7.1	-	17.0	42.6	32.4	5.9	4.1	2.7	40.4	11.2
2010	6.8	-	16.8	41.0	33.8	5.7	3.7	2.5	38.9	11.1
2011	6.6	0.18	16.8	39.3	34.0	6.0	3.4	2.1	39.9	10.8
2012	6.8	0.09	15.7	38.9	34.8	6.0	4.4	3.4	38.3	9.7
Quarter 4										
2003	4.9	-	14.9	40.9	30.9	7.3	5.1	3.5	50.4	7.6
2004	4.8	-	14.8	40.3	32.0	6.8	5.5	4.1	46.7	7.9
2005	4.6	-	13.8	41.4	31.4	6.2	4.1	3.2	42.1	7.6
2006	4.9	-	14.5	42.3	33.9	6.2	3.8	2.7	42.3	8.3
2007	4.4	-	16.0	43.2	33.3	6.2	3.7	2.6	43.5	9.8
2008	4.3	-	15.9	42.8	33.0	5.7	3.9	2.6	40.3	10.2
2009	4.1	-	15.3	42.9	33.2	6.0	2.8	2.0	40.9	9.3
2010	3.9	-	15.1	42.4	34.2	5.4	3.8	2.9	37.0	9.7
2011	3.7	0.12	14.9	40.2	34.3	5.9	3.5	2.8	39.5	9.1
2012										
Total										
2003	5.1	-	15.5	40.2	31.4	7.2	5.1	3.8	51.1	8.2
2004	5.2	-	15.2	39.8	32.3	7.0	4.9	3.5	49.1	8.3
2005	5.2	-	14.8	40.5	32.0	6.6	4.0	2.9	46.8	8.1
2006	5.2	-	15.2	41.5	33.2	6.5	3.7	2.6	46.2	8.7
2007	5.2	-	16.1	41.9	32.8	6.4	3.1	2.1	46.3	9.7
2008	4.9	-	16.9	42.1	33.1	6.3	3.8	2.6	45.2	10.6
2009	4.8	-	16.5	42.4	33.0	6.4	3.2	2.3	44.6	10.2
2010	4.5	-	16.5	41.7	33.9	6.1	3.8	2.5	41.8	10.4
2011	4.3	0.12	16.3	39.6	33.7	6.3	3.5	2.5	42.6	10.0
2012										

¹ Rates from Q2 2007 to 2012 are calculated using the Usual Residence population figures. Rates prior to Q2 2007 are based on estimated De Facto populations.² First births divided by the total number of live births (excluding those with unstated parity), multiplied by 100.³ Infant mortality is the number of infant deaths per 1,000 live births.⁴ Neonatal mortality is the number of neonatal (infants aged under 4 weeks) deaths per 1,000 live births.

Table 5 Births registered, classified by area of residence of mother, July - September 2012

Area of residence	Total	Male	Female	Rate ¹
STATE	17,985	9,208	8,777	15.7
LEINSTER	10,311	5,231	5,080	16.5
Carlow	248	132	116	18.1
Dublin City	1,880	949	931	14.6
South Dublin	1,289	639	650	19.3
Fingal	1,459	768	691	21.2
Dun Laoghaire Rathdown	695	318	377	13.5
Kildare	911	482	429	17.2
Kilkenny	358	172	186	14.9
Laois	309	155	154	15.2
Longford	159	74	85	16.1
Louth	500	274	226	16.1
Meath	790	412	378	17.0
Offaly	268	144	124	13.9
Westmeath	355	172	183	16.4
Wexford	537	266	271	14.7
Wicklow	553	274	279	16.1
MUNSTER	4,625	2,389	2,236	14.8
Clare	430	216	214	14.7
Cork City	377	173	204	12.9
Cork County	1,689	887	802	16.8
Kerry	466	251	215	13.0
Limerick City	200	94	106	14.2
Limerick County	521	272	249	15.6
North Tipperary	252	131	121	14.2
South Tipperary	268	150	118	12.0
Waterford City	186	93	93	16.0
Waterford County	236	122	114	14.0
CONNACHT	2,017	1,044	973	15.0
Galway City	289	136	153	16.1
Galway County	723	373	350	16.5
Leitrim	129	72	57	16.0
Mayo	421	220	201	12.9
Roscommon	216	118	98	13.4
Sligo	239	125	114	14.7
ULSTER (PART OF)	1,032	544	488	14.0
Cavan	290	166	124	15.8
Donegal	546	271	275	13.6
Monaghan	196	107	89	12.8
REGIONAL AUTHORITIES:				
Border	1,900	1,015	885	14.7
Midland	1,091	545	546	15.3
West	1,649	847	802	14.9
Dublin	5,323	2,674	2,649	16.8
Mid-East	2,254	1,168	1,086	16.9
Mid-West	1,403	713	690	14.8
South-East	1,833	935	898	14.7
South-West	2,532	1,311	1,221	15.3

¹ Births per year per 1,000 population. Annual rates based on estimated usual residence 2012 population.

Table 6 Births registered, classified by age of mother and previous number of liveborn children, July - September 2012

Age of mother at maternity	Total	Previous number of liveborn children						
		0	1	2	3	4	5 or more	Not stated
All ages	17,985	6,974	6,138	3,225	1,081	305	214	48
15 and under	6	6	-	-	-	-	-	-
16	25	25	-	-	-	-	-	-
17	55	51	4	-	-	-	-	-
18	135	126	7	1	-	-	-	1
19	181	157	20	3	-	-	-	1
Under 20	402	365	31	4	-	-	-	2
20	241	194	43	4	-	-	-	-
21	303	207	73	20	2	1	-	-
22	311	208	72	19	7	1	2	2
23	400	234	121	39	6	-	-	-
24	452	234	146	52	14	4	-	2
20-24	1,707	1,077	455	134	29	6	2	4
25	505	272	166	56	9	2	-	-
26	646	306	236	76	16	8	2	2
27	762	369	257	95	26	9	4	2
28	876	396	310	113	43	12	1	1
29	1,049	457	392	141	38	7	13	1
25-29	3,838	1,800	1,361	481	132	38	20	6
30	1,222	538	427	149	61	23	18	6
31	1,307	575	447	201	56	15	11	2
32	1,371	512	521	243	61	22	9	3
33	1,355	463	538	252	72	16	12	2
34	1,251	378	484	268	82	20	15	4
30-34	6,506	2,466	2,417	1,113	332	96	65	17
35	1,205	295	452	326	96	17	16	3
36	1,051	264	371	271	100	25	11	9
37	915	209	310	255	94	23	22	2
38	735	134	252	206	104	27	12	-
39	624	127	184	189	74	26	21	3
35-39	4,530	1,029	1,569	1,247	468	118	82	17
40	404	88	115	104	61	22	13	1
41	247	50	80	72	23	8	13	1
42	165	35	44	41	24	11	10	-
43	81	22	34	12	8	2	3	-
44	50	18	13	11	3	1	4	-
40-44	947	213	286	240	119	44	43	2
45 and over	53	23	18	6	1	3	2	-
Age not stated	2	1	1	-	-	-	-	-

Table 7 Number and percentage of births registered within and outside marriage/civil partnership, classified by age of mother, July - September 2012

Age of mother at maternity	Total	Married/Civil partnership parents	Unmarried /non Civil partnership parents		Married/Civil partnership parents	Unmarried /non Civil partnership parents	
			Total	Same address		Total	Same address
	Number				Percentage		
All ages	17,985	11,735	6,250	3,535	65	35	20
15 and under	6	-	6	1	-	100	17
16	25	-	25	4	-	100	16
17	55	7	48	8	13	87	15
18	135	12	123	23	9	91	17
19	181	20	161	42	11	89	23
Under 20	402	39	363	78	10	90	19
20	241	32	209	61	13	87	25
21	303	45	258	98	15	85	32
22	311	58	253	97	19	81	31
23	400	83	317	142	21	79	36
24	452	117	335	166	26	74	37
20-24	1,707	335	1,372	564	20	80	33
25	505	161	344	170	32	68	34
26	646	265	381	219	41	59	34
27	762	350	412	271	46	54	36
28	876	503	373	221	57	43	25
29	1,049	671	378	233	64	36	22
25-29	3,838	1,950	1,888	1,114	51	49	29
30	1,222	857	365	236	70	30	19
31	1,307	956	351	249	73	27	19
32	1,371	1,074	297	204	78	22	15
33	1,355	1,070	285	189	79	21	14
34	1,251	999	252	165	80	20	13
30-34	6,506	4,956	1,550	1,043	76	24	16
35	1,205	1,011	194	141	84	16	12
36	1,051	850	201	136	81	19	13
37	915	768	147	98	84	16	11
38	735	575	160	109	78	22	15
39	624	500	124	86	80	20	14
35-39	4,530	3,704	826	570	82	18	13
40	404	319	85	58	79	21	14
41	247	182	65	43	74	26	17
42	165	114	51	35	69	31	21
43	81	61	20	16	75	25	20
44	50	34	16	6	68	32	12
40-44	947	710	237	158	75	25	17
45 and over	53	39	14	8	74	26	15
Age not stated	2	2	-	-	-	-	-

Table 8 Number and percentage of births registered within and outside marriage/civil partnership classified by area of residence of mother, July - September 2012

Area of residence	Total	Married/Civil partnership parents	Unmarried /non Civil partnership parents		Married/Civil partnership parents	Unmarried /non Civil partnership parents	
			Total	Same address		Total	Same address
Number					Percentage		
STATE	17,985	11,735	6,250	3,535	65	35	20
LEINSTER	10,311	6,458	3,853	2,131	63	37	21
Carlow	248	153	95	51	62	38	21
Dublin City	1,880	1,015	865	370	54	46	20
South Dublin	1,289	762	527	271	59	41	21
Fingal	1,459	979	480	285	67	33	20
Dun Laoghaire Rathdown	695	509	186	124	73	27	18
Kildare	911	608	303	189	67	33	21
Kilkenny	358	255	103	70	71	29	20
Laois	309	198	111	71	64	36	23
Longford	159	106	53	31	67	33	19
Louth	500	295	205	108	59	41	22
Meath	790	545	245	155	69	31	20
Offaly	268	165	103	60	62	38	22
Westmeath	355	227	128	74	64	36	21
Wexford	537	300	237	140	56	44	26
Wicklow	553	341	212	132	62	38	24
MUNSTER	4,625	3,088	1,537	899	67	33	19
Clare	430	295	135	75	69	31	17
Cork City	377	193	184	86	51	49	23
Cork County	1,689	1,226	463	307	73	27	18
Kerry	466	330	136	85	71	29	18
Limerick City	200	88	112	39	44	56	20
Limerick County	521	371	150	94	71	29	18
North Tipperary	252	169	83	56	67	33	22
South Tipperary	268	163	105	60	61	39	22
Waterford City	186	100	86	46	54	46	25
Waterford County	236	153	83	51	65	35	22
CONNACHT	2,017	1,482	535	335	73	27	17
Galway City	289	215	74	41	74	26	14
Galway County	723	563	160	111	78	22	15
Leitrim	129	97	32	18	75	25	14
Mayo	421	294	127	87	70	30	21
Roscommon	216	160	56	28	74	26	13
Sligo	239	153	86	50	64	36	21
ULSTER (PART OF)	1,032	707	325	170	69	31	16
Cavan	290	190	100	66	66	34	23
Donegal	546	379	167	74	69	31	14
Monaghan	196	138	58	30	70	30	15
REGIONAL AUTHORITIES:							
Border	1,900	1,252	648	346	66	34	18
Midland	1,091	696	395	236	64	36	22
West	1,649	1,232	417	267	75	25	16
Dublin	5,323	3,265	2,058	1,050	61	39	20
Mid-East	2,254	1,494	760	476	66	34	21
Mid-West	1,403	923	480	264	66	34	19
South-East	1,833	1,124	709	418	61	39	23
South-West	2,532	1,749	783	478	69	31	19

Table 9 Births registered, classified by area of residence and age of mother, July - September 2012

Area of residence	Total	Under 20	20-24	25-29	30-34	35-39	40 and over	Age not stated	Average age of mother at maternity	
									Total	First
STATE	17,985	402	1,707	3,838	6,506	4,530	1,000	2	32.0	30.0
LEINSTER	10,311	258	1,049	2,216	3,741	2,521	525	1	31.8	29.9
Carlow	248	8	32	66	82	47	13	-	30.7	28.2
Dublin City	1,880	59	243	404	628	444	102	-	31.4	29.9
South Dublin	1,289	37	162	317	458	257	58	-	31.0	29.0
Fingal	1,459	21	133	306	551	378	70	-	32.1	30.5
Dun Laoghaire Rathdown	695	7	24	99	268	245	52	-	33.8	32.4
Kildare	911	26	70	174	359	239	43	-	32.1	29.9
Kilkenny	358	5	29	71	140	97	16	-	32.3	30.0
Laois	309	9	36	74	103	70	17	-	31.5	29.0
Longford	159	5	21	35	51	36	11	-	31.4	29.7
Louth	500	12	58	131	173	113	13	-	31.1	28.9
Meath	790	14	58	146	299	222	51	-	32.6	30.2
Offaly	268	11	25	70	88	65	9	-	31.2	28.6
Westmeath	355	10	43	68	154	66	14	-	31.3	28.9
Wexford	537	20	67	131	188	102	28	1	30.9	28.7
Wicklow	553	14	48	124	199	140	28	-	32.0	30.3
MUNSTER	4,625	88	409	1,007	1,680	1,163	278	-	32.2	30.0
Clare	430	9	38	83	155	118	27	-	32.5	30.4
Cork City	377	12	52	104	121	75	13	-	30.7	28.6
Cork County	1,689	17	108	322	673	476	93	-	32.7	30.8
Kerry	466	12	42	89	172	107	44	-	32.4	30.0
Limerick City	200	8	33	58	63	24	14	-	30.1	27.8
Limerick County	521	5	47	125	177	137	30	-	32.2	30.3
North Tipperary	252	7	18	61	84	62	20	-	32.3	29.8
South Tipperary	268	6	31	67	89	61	14	-	31.5	29.0
Waterford City	186	7	20	53	61	39	6	-	30.9	29.0
Waterford County	236	5	20	45	85	64	17	-	32.5	30.0
CONNACHT	2,017	28	147	380	718	596	147	1	32.8	30.9
Galway City	289	-	22	55	106	82	24	-	32.7	30.9
Galway County	723	11	41	119	255	242	55	-	33.3	31.7
Leitrim	129	4	8	26	54	31	6	-	32.1	29.9
Mayo	421	8	38	96	144	106	29	-	32.2	30.1
Roscommon	216	1	16	34	76	74	14	1	33.1	31.0
Sligo	239	4	22	50	83	61	19	-	32.3	30.1
ULSTER (PART OF)	1,032	28	102	235	367	250	50	-	31.7	29.0
Cavan	290	8	24	70	106	69	13	-	31.7	29.4
Donegal	546	16	61	115	193	133	28	-	31.7	28.7
Monaghan	196	4	17	50	68	48	9	-	31.6	29.4
REGIONAL AUTHORITIES:										
Border	1,900	48	190	442	677	455	88	-	31.6	29.2
Midland	1,091	35	125	247	396	237	51	-	31.4	29.0
West	1,649	20	117	304	581	504	122	1	32.9	31.1
Dublin	5,323	124	562	1,126	1,905	1,324	282	-	31.8	30.2
Mid-East	2,254	54	176	444	857	601	122	-	32.3	30.1
Mid-West	1,403	29	136	327	479	341	91	-	32.0	29.8
South-East	1,833	51	199	433	645	410	94	1	31.5	29.1
South-West	2,532	41	202	515	966	658	150	-	32.4	30.2

Table 10 Births registered outside marriage/civil partnership, classified by area of residence and age of mother, July - September 2012

Area of residence	Total	Under 25	25-29	30-34	35-39	40 and over	Age not stated	Average age of mother at maternity	
								Total	First
STATE	6,250	1,735	1,888	1,550	826	251	-	29.0	27.3
LEINSTER	3,853	1,079	1,165	958	506	145	-	28.9	27.3
Carlow	95	36	30	19	8	2	-	27.3	25.6
Dublin City	865	248	248	204	128	37	-	29.0	27.8
South Dublin	527	156	181	124	51	15	-	28.3	26.5
Fingal	480	116	140	146	59	19	-	29.5	28.2
Dun Laoghaire Rathdown	186	27	54	49	42	14	-	31.4	30.4
Kildare	303	83	85	85	39	11	-	28.9	26.9
Kilkenny	103	31	30	20	19	3	-	29.1	26.1
Laois	111	39	31	22	17	2	-	28.4	26.4
Longford	53	18	12	10	10	3	-	29.3	28.5
Louth	205	61	74	41	25	4	-	28.2	26.5
Meath	245	58	72	71	32	12	-	29.6	27.8
Offaly	103	33	29	23	15	3	-	28.3	25.5
Westmeath	128	45	36	34	10	3	-	27.8	25.6
Wexford	237	73	73	60	24	7	-	28.4	26.4
Wicklow	212	55	70	50	27	10	-	29.2	27.6
MUNSTER	1,537	419	475	391	190	62	-	29.0	27.1
Clare	135	45	33	40	13	4	-	28.8	27.3
Cork City	184	52	67	43	17	5	-	28.4	26.2
Cork County	463	103	133	135	73	19	-	29.8	27.8
Kerry	136	43	36	37	12	8	-	28.5	26.9
Limerick City	112	38	36	23	7	8	-	28.3	26.4
Limerick County	150	41	47	37	19	6	-	29.1	27.5
North Tipperary	83	21	35	13	12	2	-	28.6	25.6
South Tipperary	105	32	37	22	10	4	-	28.2	26.3
Waterford City	86	22	29	17	17	1	-	29.1	27.8
Waterford County	83	22	22	24	10	5	-	29.5	27.4
CONNACHT	535	129	149	138	90	29	-	29.7	28.3
Galway City	74	12	19	21	19	3	-	30.8	28.6
Galway County	160	36	46	42	26	10	-	30.0	28.8
Leitrim	32	9	10	10	3	-	-	27.8	26.3
Mayo	127	33	40	29	17	8	-	29.3	28.2
Roscommon	56	16	13	13	10	4	-	29.9	28.2
Sligo	86	23	21	23	15	4	-	29.6	28.3
ULSTER (PART OF)	325	108	99	63	40	15	-	28.4	25.9
Cavan	100	25	34	21	14	6	-	29.3	26.5
Donegal	167	65	45	29	20	8	-	28.1	25.2
Monaghan	58	18	20	13	6	1	-	27.8	27.0
REGIONAL AUTHORITIES:									
Border	648	201	204	137	83	23	-	28.5	26.4
Midland	395	135	108	89	52	11	-	28.3	26.2
West	417	97	118	105	72	25	-	29.9	28.5
Dublin	2,058	547	623	523	280	85	-	29.2	27.8
Mid-East	760	196	227	206	98	33	-	29.2	27.4
Mid-West	480	145	151	113	51	20	-	28.8	26.8
South-East	709	216	221	162	88	22	-	28.5	26.5
South-West	783	198	236	215	102	32	-	29.3	27.3

Table 11 Births registered, classified by nationality of mother, marital status and age, July - September 2012

Nationality of mother	Total births	% of total births	% of births outside marriage/civil partnership	Average age
TOTAL	17,985	100.0	34.8	32.0
Ireland	13,735	76.4	35.1	32.3
United Kingdom	365	2.0	46.3	31.8
EU15 excl. Irl & UK	244	1.4	45.9	33.5
Accession states (EU27 excl. EU15)	2,018	11.2	36.7	29.6
Other	1,474	8.2	22.9	31.6
Not stated	149	0.8	44.3	31.6

Table 12 Deaths registered by county of residence of deceased, July - September 2012

Area of residence	Total	Male	Female	Rate ¹
STATE	6,825	3,589	3,236	6.0
LEINSTER	3,470	1,792	1,678	5.5
Carlow	65	38	27	4.7
Dublin City	1,065	530	535	8.3
South Dublin	260	149	111	3.9
Fingal	250	139	111	3.6
Dun Laoghaire Rathdown	311	158	153	6.0
Kildare	204	108	96	3.9
Kilkenny	135	54	81	5.6
Laois	88	50	38	4.3
Longford	63	34	29	6.4
Louth	176	81	95	5.7
Meath	202	102	100	4.3
Offaly	89	53	36	4.6
Westmeath	131	61	70	6.1
Wexford	254	146	108	6.9
Wicklow	177	89	88	5.2
MUNSTER	1,997	1,075	922	6.4
Clare	165	89	76	5.6
Cork City	293	151	142	10.0
Cork County	507	266	241	5.0
Kerry	262	167	95	7.3
Limerick City	125	61	64	8.9
Limerick County	205	109	96	6.1
North Tipperary	126	65	61	7.1
South Tipperary	131	73	58	5.9
Waterford City	64	29	35	5.5
Waterford County	119	65	54	7.0
CONNACHT	867	470	397	6.4
Galway City	65	39	26	3.6
Galway County	300	169	131	6.9
Leitrim	59	31	28	7.3
Mayo	247	137	110	7.6
Roscommon	98	45	53	6.1
Sligo	98	49	49	6.0
ULSTER (PART OF)	491	252	239	6.6
Cavan	131	70	61	7.1
Donegal	264	134	130	6.6
Monaghan	96	48	48	6.3
REGIONAL AUTHORITIES:				
Border	824	413	411	6.4
Midland	371	198	173	5.2
West	710	390	320	6.4
Dublin	1,886	976	910	6.0
Mid-East	583	299	284	4.4
Mid-West	621	324	297	6.6
South-East	768	405	363	6.1
South-West	1,062	584	478	6.4

¹ Deaths per year per 1,000 population. Annual rates based on estimated 2012 Usual Residence population.

**Table 13 Deaths registered by cause of death and county of residence of deceased,
July - September 2012**

Area of residence	Total deaths	Malignant Neoplasms	Diseases of the Circulatory system	Diseases of the Respiratory system	External causes	All other causes
STATE	6,825	2,120	2,204	719	402	1,380
LEINSTER	3,470	1,101	1,082	355	207	725
Carlow	65	28	17	7	3	10
Dublin City	1,065	317	334	115	74	225
South Dublin	260	94	76	22	16	52
Fingal	250	90	69	23	14	54
Dun Laoghaire Rathdown	311	90	107	27	12	75
Kildare	204	69	59	18	15	43
Kilkenny	135	41	55	7	8	24
Laois	88	32	32	7	0	17
Longford	63	17	22	11	1	12
Louth	176	57	43	26	7	43
Meath	202	71	64	20	11	36
Offaly	89	34	28	7	5	15
Westmeath	131	39	45	16	8	23
Wexford	254	69	79	33	17	56
Wicklow	177	53	52	16	16	40
MUNSTER	1,997	615	682	196	106	398
Clare	165	58	55	21	4	27
Cork City	293	83	100	19	29	62
Cork County	507	150	170	50	28	109
Kerry	262	85	92	22	14	49
Limerick City	125	32	36	13	9	35
Limerick County	205	59	83	15	9	39
North Tipperary	126	44	44	13	2	23
South Tipperary	131	38	47	14	6	26
Waterford City	64	23	17	10	1	13
Waterford County	119	43	38	19	4	15
CONNACHT	867	262	276	112	60	157
Galway City	65	15	23	5	9	13
Galway County	300	103	83	39	18	57
Leitrim	59	9	26	11	2	11
Mayo	247	76	82	32	22	35
Roscommon	98	30	32	12	4	20
Sligo	98	29	30	13	5	21
ULSTER (PART OF)	491	142	164	56	29	100
Cavan	131	33	47	16	5	30
Donegal	264	76	91	33	15	49
Monaghan	96	33	26	7	9	21
REGIONAL AUTHORITIES:						
Border	824	237	263	106	43	175
Midland	371	122	127	41	14	67
West	710	224	220	88	53	125
Dublin	1,886	591	586	187	116	406
Mid-East	583	193	175	54	42	119
Mid-West	621	193	218	62	24	124
South-East	768	242	253	90	39	144
South-West	1,062	318	362	91	71	220

Table 14 Deaths registered classified by cause and age group, July - September 2012

Cause of Death	65 COD Code	ICD-10 Code	Total Deaths	Age Group										
				Under 1	1-4	5-14	15-24	25-34	35-44	45-54	55-64	65-74	75-84	85 and over
Total deaths	0	A00-Y89	6,825	79	9	13	82	104	185	390	706	1,203	1,924	2,130
Infectious and parasitic diseases:-														
Tuberculosis	1	A00-B99	61	2	2	0	0	3	6	11	2	13	11	11
Meningococcal infection	2	A15-A19,B90	2	0	0	0	0	0	0	0	0	0	2	0
AIDS (HIV Disease)	3	A39	0	0	0	0	0	0	0	0	0	0	0	0
Viral Hepatitis	4	B20-B24	9	0	0	0	0	1	3	4	1	0	0	0
Other infectious and parasitic diseases	5	B15-B19	9	0	0	0	0	1	3	3	0	1	1	0
			41	2	2	0	0	1	0	4	1	12	8	11
Neoplasms	6	C00-D48	2,181	0	6	11	11	11	60	156	339	556	668	374
Malignant Neoplasms of the:-	7	C00-C97	2,120	0	5	10	10	11	57	156	335	546	648	352
Lip, oral cavity, pharynx	8	C00-C14	46	0	0	0	0	0	1	9	10	13	8	5
Oesophagus	9	C15	103	0	0	0	0	0	1	5	12	35	31	19
Stomach	10	C16	89	0	0	0	0	0	3	10	24	38	14	14
Colon	11	C18	124	0	0	0	0	0	3	10	12	26	42	31
Rectum and anus	12	C19-C21	109	0	0	0	1	0	5	6	22	28	31	16
Liver and the intrahepatic bile ducts	13	C22	59	0	0	0	0	1	1	4	12	17	15	9
Pancreas	14	C25	112	0	0	0	0	0	1	7	15	28	42	19
Larynx and trachea/bronchus /lung	15	C32-C34	436	0	0	0	0	0	4	23	83	139	140	46
Skin	16	C43	40	0	0	0	1	1	1	2	5	13	10	7
Breast	17	C50	175	0	0	0	0	3	10	39	37	28	37	21
Cervix uteri	18	C53	24	0	0	0	0	0	4	5	8	4	1	2
Other parts of uterus	19	C54-C55	28	0	0	0	0	0	0	2	8	7	7	4
Ovary	20	C56	66	0	0	0	0	0	5	5	16	14	18	8
Prostate	21	C61	134	0	0	0	0	0	0	0	10	27	54	43
Kidney	22	C64	48	0	0	2	0	0	1	3	9	15	11	7
Bladder	23	C67	50	0	0	0	0	0	0	2	5	12	16	15
Lymph/haematopoietic tissue	24	C81-C96	199	0	0	0	4	3	2	7	23	54	74	32
Other malignant neoplasms			278	0	0	3	4	2	18	24	38	62	73	54
Diseases of the blood and blood-forming organs, immunological disorders														
Endocrine, Nutritional and metabolic diseases	25	D50-D89	17	0	0	0	0	0	1	2	0	3	6	5
Diabetes mellitus	26	E00-E90	171	3	0	0	1	2	1	4	14	28	55	63
Alcohol abuse (including alcoholic psychosis)	27	E10-E14	134	0	0	0	0	0	0	3	9	24	43	55
Drug dependence, toxicomania	28	F00-F99	194	0	0	0	0	0	1	2	1	13	54	123
Mental and behavioural disorders														
Alcohol abuse (including alcoholic psychosis)	29	F10	5	0	0	0	0	0	1	2	0	1	1	0
Drug dependence, toxicomania	30	F11-F16,F18-F19	0	0	0	0	0	0	0	0	0	0	0	0
Diseases of the nervous system and the sense organs	31	G00-H95	281	2	3	0	4	4	5	15	23	34	89	102
Meningitis	32	G00-G03	2	0	0	0	0	0	1	1	0	0	0	0
Diseases of the Circulatory System:-	33	I00-I99	2,204	0	1	0	5	16	22	84	192	349	635	900
Ischaemic heart disease	34	I20-I25	1,118	0	0	0	1	2	10	56	129	213	320	387
of which: (Acute myocardial infarction)		I21	497	0	0	0	0	1	4	16	40	154	198	167
Other heart disease	35	I30-I33,I39+I52	318	0	1	0	4	6	7	10	15	34	74	167
Cerebrovascular disease	36	I60-I69	419	0	0	0	0	3	3	11	23	52	115	212
Other diseases of circulatory system			349	0	0	0	0	5	2	7	25	50	126	134

Diseases of the Respiratory system	37	J00-J99	719	0	0	0	0	0	1	2	3	13	35	107	224	334
Influenza	38	J10-J11	1	0	0	0	0	0	0	0	0	0	0	0	0	1
Pneumonia	39	J12-J19	226	0	0	0	0	0	0	1	0	7	3	17	44	154
Chronic Lower respiratory disease of which: Asthma	40	J40-J47	315	0	0	0	0	0	1	1	1	2	25	68	123	94
Other diseases of the respiratory system	41	J45-J46	6	0	0	0	0	0	1	0	1	0	0	0	3	1
Diseases of the Digestive system	42	K00-K93	286	0	0	0	0	0	1	5	25	37	39	35	73	71
Ulcer of stomach, duodenum and jejunum	43	K25-K28	26	0	0	0	0	0	0	0	1	0	4	4	6	11
Chronic liver disease	44	K70,K73-K74	96	0	0	0	0	0	0	2	16	29	27	11	8	3
Other diseases of the digestive system			164	0	0	0	0	0	1	3	8	8	8	20	59	57
Diseases of the skin and subcutaneous tissue	45	L00-L99	6	0	0	0	0	0	0	0	0	0	0	1	2	3
Diseases of the musculoskeletal system/connective tissue	46	M00-M99	42	0	0	0	0	0	0	0	1	1	3	5	18	14
Rheumatoid arthritis and osteoarthritis	47	M05-M06,M15-M19	15	0	0	0	0	0	0	0	0	0	0	0	9	6
Diseases of the genitourinary system	48	N00-N99	153	0	0	0	0	0	0	1	0	2	2	13	54	81
Diseases of the kidney and ureter	49	N00-N29	105	0	0	0	0	0	0	1	0	0	0	10	38	56
Complications of pregnancy, childbirth and puerperium	50	O00-O99	0	0	0	0	0	0	0	0	0	0	0	0	0	0
Certain conditions originating in the perinatal period¹	51	P00-P96	40	39	0	1	0	0	0	0	0	0	0	0	0	0
Congenital malformations and chromosomal abnormalities	52	Q00-Q99	48	28	3	2	2	2	2	1	2	1	3	4	1	1
Congenital malformations of the:-																
Nervous system	53	Q00-Q07	3	3	0	0	0	0	0	0	0	0	0	0	0	0
Circulatory system	54	Q20-Q28	14	7	2	0	2	0	2	0	1	0	0	0	1	1
Symptoms, signs, abnormal findings, ill-defined causes	55	R00-R99	20	5	0	0	0	0	0	0	1	1	1	4	2	6
Sudden infant death syndrome	56	R95	5	5	0	0	0	0	0	0	0	0	0	0	0	0
Unknown and unspecified causes	57	R96-R99	6	0	0	0	0	0	0	0	1	1	1	2	0	1
External causes of injury and poisoning	58	V01-Y89	402	0	4	0	0	0	57	59	57	61	52	38	32	42
Accidents	59	V01-X59	219	0	2	22	22	22	22	27	29	29	28	17	27	38
of which: Transport accidents	60	V01-V99	39	0	0	11	11	11	11	4	10	3	1	3	3	2
Accidental falls	61	W00-W19	58	0	0	0	0	0	0	2	2	10	9	9	12	14
Accidental poisoning	62	X40-X49	57	0	0	0	0	0	4	17	16	10	8	0	2	0
other accidents			65	0	0	0	0	0	7	4	1	6	10	5	10	22
Suicide and intentional self harm	63	X60-X84	136	0	0	0	0	0	27	23	24	28	15	15	2	0
Homicide/assault	64	X85-Y09	9	0	0	0	0	0	3	2	2	1	1	0	0	0
Events of undetermined intent	65	Y10-Y34	26	0	0	0	0	0	5	7	2	3	7	1	0	1
All other external causes			12	0	0	0	0	0	0	0	0	0	1	5	3	3

¹ Stillbirths not included.

Table 15 Male deaths registered classified by cause and age group, July - September 2012

Cause of Death	65 COD Code	ICD-10 Code	Total Males	Age Group										
				Under 1	1-4	5-14	15-24	25-34	35-44	45-54	55-64	65-74	75-84	85 and over
Total Male Deaths	0	A00-Y89	3,589	36	5	5	66	77	122	230	440	753	1,081	774
Infectious and parasitic diseases:-	1	A00-B99	36	0	2	0	0	2	4	8	1	7	7	5
Tuberculosis	2	A15-A19,B90	2	0	0	0	0	0	0	0	0	0	2	0
Meningococcal infection	3	A39	0	0	0	0	0	0	0	0	0	0	0	0
AIDS (HIV Disease)	4	B20-B24	7	0	0	0	0	1	2	3	1	0	0	0
Viral Hepatitis	5	B15-B19	5	0	0	0	0	0	2	2	0	0	1	0
Other infectious and parasitic diseases			22	0	2	0	0	1	0	3	0	7	4	5
Neoplasms	6	C00-D48	1,171	0	2	8	7	29	66	181	318	386	174	174
Malignant Neoplasms of the:-	7	C00-C97	1,142	0	2	7	7	27	66	180	311	377	165	165
Lip, oral cavity, pharynx	8	C00-C14	30	0	0	0	0	1	9	8	8	4	0	0
Oesophagus	9	C15	68	0	0	0	0	1	3	10	22	22	10	10
Stomach	10	C16	52	0	0	0	0	0	1	6	16	24	5	5
Colon	11	C18	75	0	0	0	0	2	7	7	18	27	14	14
Rectum and anus	12	C19-C21	64	0	0	1	0	5	3	13	17	16	9	9
Liver and the intrahepatic bile ducts	13	C22	35	0	0	0	1	1	3	6	14	7	3	3
Pancreas	14	C25	60	0	0	0	0	1	5	10	23	11	11	11
Larynx and trachea/bronchus /lung	15	C32-C34	277	0	0	0	1	3	15	55	88	91	24	24
Skin	16	C43	22	0	0	0	1	0	1	3	10	5	2	2
Breast	17	C50	1	0	0	0	0	0	1	0	0	0	0	0
Cervix uteri	18	C53	0	0	0	0	0	0	0	0	0	0	0	0
Other parts of uterus	19	C54-C55	0	0	0	0	0	0	0	0	0	0	0	0
Ovary	20	C56	0	0	0	0	0	0	0	0	0	0	0	0
Prostate	21	C61	134	0	0	0	0	0	0	10	27	54	43	43
Kidney	22	C64	31	0	0	1	0	0	0	6	11	8	3	3
Bladder	23	C67	34	0	0	0	0	0	1	3	9	13	8	8
Lymph/haematopoietic tissue	24	C81-C96	108	0	0	0	3	2	1	15	27	39	16	16
Other malignant neoplasms			151	0	1	3	2	12	10	28	34	44	17	17
Diseases of the blood and blood-forming organs, immunological disorders	25	D50-D89	2	0	0	0	0	0	0	1	0	0	1	0
Endocrine, Nutritional and metabolic diseases	26	E00-E90	86	2	0	0	1	1	4	9	18	32	19	19
Diabetes mellitus	27	E10-E14	70	0	0	0	0	0	3	7	16	27	17	17
Mental and behavioural disorders	28	F00-F99	76	0	0	0	0	0	0	0	6	32	37	37
Alcohol abuse (including alcoholic psychosis)	29	F10	3	0	0	0	0	0	1	0	1	1	0	0
Drug dependence, toxicomania	30	F11-F16,F18-F19	0	0	0	0	0	0	0	0	0	0	0	0
Diseases of the nervous system and the sense organs	31	G00-H95	142	2	1	0	3	3	10	16	22	50	33	33
Meningitis	32	G00-G03	2	0	0	0	0	1	1	0	0	0	0	0
Diseases of the Circulatory System:-	33	I00-I99	1,134	0	0	0	10	18	59	147	239	357	299	299
Ischaemic heart disease	34	I20-I25	651	0	0	1	2	9	44	105	149	197	144	144
of which: (Acute myocardial infarction)		I21	264	0	0	0	1	4	10	34	54	91	70	70
Other heart disease	35	I30-I33,I39-I52	152	0	0	0	4	5	6	13	28	35	57	57
Cerebrovascular disease	36	I60-I69	164	0	0	0	3	3	7	14	25	57	55	55
Other diseases of circulatory system			167	0	0	0	1	1	2	15	37	68	43	43

Diseases of the Respiratory system		37	J00-J99	358	0	0	0	0	2	2	7	18	73	127	129
Influenza		38	J10-J11	0	0	0	0	0	0	0	0	0	0	0	0
Pneumonia		39	J12-J19	90	0	0	0	1	0	5	5	1	8	20	55
Chronic Lower respiratory disease of which: Asthma		40	J40-J47	173	0	0	0	1	0	1	12	12	48	74	37
Other diseases of the respiratory system		41	J45-J46	2	0	0	0	0	0	0	0	0	0	2	0
Diseases of the Digestive system		42	K00-K93	147	0	0	0	1	2	16	26	23	24	27	28
Ulcer of stomach, duodenum and jejunum		43	K25-K28	15	0	0	0	0	1	1	0	4	3	1	6
Chronic liver disease		44	K70,K73-K74	62	0	0	0	0	12	12	21	16	8	4	1
Other diseases of the digestive system		70		0	0	0	0	1	2	3	5	3	13	22	21
Diseases of the skin and subcutaneous tissue		45	L00-L99	2	0	0	0	0	0	0	0	0	0	0	2
Diseases of the musculoskeletal system/connective tissue		46	M00-M99	16	0	0	0	0	0	0	1	3	2	8	2
Rheumatoid arthritis and osteoarthritis		47	M05-M06, M15-M19	4	0	0	0	0	0	0	0	0	0	4	0
Diseases of the genitourinary system		48	N00-N99	75	0	0	0	0	0	0	2	1	9	31	32
Diseases of the kidney and ureter		49	N00-N29	54	0	0	0	0	0	0	0	0	6	22	26
Complications of pregnancy, childbirth and puerperium		50	O00-O99	0	0	0	0	0	0	0	0	0	0	0	0
Certain conditions originating in the perinatal period¹		51	P00-P96	19	18	0	1	0	0	0	0	0	0	0	0
Congenital malformations and chromosomal abnormalities		52	Q00-Q99	25	13	2	0	2	0	1	1	1	4	1	0
Congenital malformations of the:-		53	Q00-Q07	1	1	0	0	0	0	0	0	0	0	0	0
Nervous system		54	Q20-Q28	8	3	1	0	2	0	1	0	0	0	1	0
Symptoms, signs, abnormal findings, ill-defined causes		55	R00-R99	6	1	0	0	0	0	0	0	1	2	2	0
Sudden infant death syndrome		56	R95	1	1	0	0	0	0	0	0	0	0	0	0
Unknown and unspecified causes		57	R96-R99	2	0	0	0	0	0	0	0	1	1	0	0
External causes of injury and poisoning		58	V01-Y99	294	0	0	2	48	50	48	44	39	29	20	14
Accidents		59	V01-X59	152	0	0	0	19	24	25	23	20	12	16	13
of which: Transport accidents		60	V01-Y99	29	0	0	0	8	3	10	2	1	2	3	0
Accidental falls		61	W00-W19	35	0	0	0	0	2	2	7	6	7	7	4
Accidental poisoning		62	X40-X49	44	0	0	0	4	15	12	8	5	0	0	0
other accidents				44	0	0	0	7	4	1	6	8	3	6	9
Suicide and intentional self harm		63	X60-X84	111	0	0	2	24	19	20	19	13	12	2	0
Homicide/assault		64	X85-Y09	6	0	0	0	2	1	1	0	1	0	0	0
Events of undetermined intent		65	Y10-Y34	18	0	0	0	3	5	2	2	5	1	0	0
All other external causes				7	0	0	0	0	0	0	0	0	4	2	1

¹ Stillbirths not included.

Table 16 Female deaths registered classified by cause and age group, July - September 2012

Cause of Death	65 COD Code	ICD-10 Code	Total Females	Age Group										85 and over
				Under 1	1-4	5-14	15-24	25-34	35-44	45-54	55-64	65-74	75-84	
Total Female Deaths	0	A00-Y89	3,236	43	4	8	16	27	63	160	266	450	843	1,356
Infectious and parasitic diseases:-														
Tuberculosis	1	A00-B99	25	2	0	0	0	1	2	3	1	6	4	6
Meningococcal infection	2	A15-A19,B90	0	0	0	0	0	0	0	0	0	0	0	0
AIDS (HIV Disease)	3	A39	0	0	0	0	0	0	0	0	0	0	0	0
Virial Hepatitis	4	B20-B24	2	0	0	0	0	0	1	1	0	0	0	0
Other infectious and parasitic diseases	5	B15-B19	4	0	0	0	0	1	1	1	0	1	0	0
			19	2	0	0	0	0	0	1	1	5	4	6
Neoplasms	6	C00-D48	1,010	0	0	4	3	4	31	90	158	238	282	200
Malignant Neoplasms of the:-														
Lip, oral cavity, pharynx	7	C00-C97	978	0	0	3	3	4	30	90	155	235	271	187
Oesophagus	8	C00-C14	16	0	0	0	0	0	0	0	2	5	4	5
Stomach	9	C15	35	0	0	0	0	0	0	2	2	13	9	9
Colon	10	C16	37	0	0	0	0	0	0	2	4	8	14	9
Rectum and anus	11	C18	49	0	0	0	0	0	1	3	5	8	15	17
Liver and the intrahepatic bile ducts	12	C19-C21	45	0	0	0	0	0	0	3	9	11	15	7
Pancreas	13	C22	24	0	0	0	0	0	0	1	6	3	8	6
Larynx and trachea/bronchus /lung	14	C25	52	0	0	0	0	0	0	2	5	18	19	8
Skin	15	C32-C34	159	0	0	0	0	0	1	8	28	51	49	22
Breast	16	C43	18	0	0	0	1	0	1	1	2	3	5	5
Cervix uteri	17	C50	174	0	0	0	0	3	10	38	37	28	37	21
Other parts of uterus	18	C53	24	0	0	0	0	0	4	5	8	4	1	2
Ovary	19	C54-C55	28	0	0	0	0	0	0	2	8	7	7	4
Prostate	20	C56	66	0	0	0	0	0	5	5	16	14	18	8
Kidney	21	C61	0	0	0	0	0	0	0	0	0	0	0	0
Bladder	22	C64	17	0	0	1	0	0	1	1	3	4	3	4
Lymph/haematopoietic tissue	23	C67	16	0	0	0	0	0	0	0	2	3	3	7
Other malignant neoplasms	24	C81-C96	91	0	0	0	1	1	1	2	8	27	35	16
			127	0	0	2	1	0	6	14	10	28	29	37
Diseases of the blood and immunological disorders	25	D50-D89	15	0	0	0	0	0	1	1	0	3	5	5
Endocrine, Nutritional and metabolic diseases	26	E00-E90	85	1	0	0	1	1	0	0	5	10	23	44
Diabetes mellitus	27	E10-E14	64	0	0	0	0	0	0	0	2	8	16	38
Mental and behavioural disorders	28	F00-F99	118	0	0	0	0	0	1	1	1	7	22	86
Alcohol abuse (including alcoholic psychosis)	29	F10	2	0	0	0	0	0	1	1	0	0	0	0
Drug dependence, toxicomania	30	F11-F16,F18-F19	0	0	0	0	0	0	0	0	0	0	0	0
Diseases of the nervous system and the sense organs	31	G00-H95	139	0	2	0	2	1	2	5	7	12	39	69
Meningitis	32	G00-G03	0	0	0	0	0	0	0	0	0	0	0	0
Diseases of the Circulatory System:-	33	I00-I99	1,070	0	1	0	0	6	4	25	45	110	278	601
Ischaemic heart disease	34	I20-I25	467	0	0	0	0	0	1	12	24	64	123	243
of which: (Acute myocardial infarction)		I21	233	0	0	0	0	0	0	6	6	30	63	128
Other heart disease	35	I30-I33,I39-I52	166	0	1	0	0	2	2	4	2	6	39	110
Cerebrovascular disease	36	I60-I69	255	0	0	0	0	0	0	4	9	27	58	157
Other diseases of circulatory system			182	0	0	0	0	4	1	5	10	13	58	91

**Table 17 Infant and neonatal mortality by area of residence of deceased,
July - September 2012**

Area of residence	Infant mortality		Neonatal mortality	
	Number	Rate	Number	Rate
STATE	79	4.4	61	3.4
LEINSTER	48	4.7	41	4.0
Carlow	1	4.0	1	4.0
Dublin City	8	4.3	7	3.7
South Dublin	5	3.9	3	2.3
Fingal	7	4.8	5	3.4
Dun Laoghaire Rathdown	1	1.4	1	1.4
Kildare	6	6.6	5	5.5
Kilkenny	0	0.0	0	0.0
Laois	2	6.5	2	6.5
Longford	0	0.0	0	0.0
Louth	1	2.0	1	2.0
Meath	5	6.3	5	6.3
Offaly	0	0.0	0	0.0
Westmeath	4	11.3	4	11.3
Wexford	3	5.6	3	5.6
Wicklow	5	9.0	4	7.2
MUNSTER	21	4.5	13	2.8
Clare	1	2.3	1	2.3
Cork City	1	2.7	1	2.7
Cork County	8	4.7	4	2.4
Kerry	2	4.3	2	4.3
Limerick City	1	5.0	0	0.0
Limerick County	1	1.9	0	0.0
North Tipperary	5	19.8	5	19.8
South Tipperary	0	0.0	0	0.0
Waterford City	0	0.0	0	0.0
Waterford County	2	8.5	0	0.0
CONNACHT	4	2.0	3	1.5
Galway City	1	3.5	1	3.5
Galway County	2	2.8	2	2.8
Leitrim	0	0.0	0	0.0
Mayo	0	0.0	0	0.0
Roscommon	0	0.0	0	0.0
Sligo	1	4.2	0	0.0
ULSTER (PART OF)	6	5.8	4	3.9
Cavan	1	3.4	0	0.0
Donegal	4	7.3	4	7.3
Monaghan	1	5.1	0	0.0
REGIONAL AUTHORITIES:				
Border	8	4.2	5	2.6
Midland	6	5.5	6	5.5
West	3	1.8	3	1.8
Dublin	21	3.9	16	3.0
Mid-East	16	7.1	14	6.2
Mid-West	8	5.7	6	4.3
South-East	6	3.3	4	2.2
South-West	11	4.3	7	2.8

Infant mortality rates: Deaths of infants under one year per 1,000 live births, classified by area of residence of mother.

Neonatal mortality rates: Deaths of infants under 28 days per 1,000 live births, classified by area of residence of mother.

Infant and neonatal mortality rates in some areas, based on small numbers are subject to considerable fluctuation and caution should be exercised in their interpretation.

Background Notes

Methodology

All figures in this report are classified by quarter of registration. Delay in the registration of some births, deaths and marriages result in them being included in a later period in these quarterly reports.

Changes in methodology

The extension of the Limerick City boundary, which came into operation on 1st March 2008, has been taken into account in the compilation of the statistics from the Second Quarter of 2008. As a result, data for Limerick City and County are not directly comparable with any quarter prior to the Second Quarter 2008.

This publication continues with the 3 major changes in the methods by which mortality statistics are compiled. These changes were introduced in the Vital Statistics First Quarter 2007 publication.

- 1) Underlying Cause of Death is classified according to International Classification of Diseases, Version 10 (ICD10) instead of to International Classification of Diseases, Version 9 (ICD9). In addition, this and future publications will incorporate certain official updates to ICD-10. In particular, mental and behavioural disorders due to psychoactive substance use (F10-F19), with mention of intestinal infectious diseases (A00-A09), accidental, intentional self and undetermined intent poisoning by and exposure to noxious substances (X40-X49, X60-X69, Y10-Y19) or assault by chemical or noxious substance (X85-X90), are now coded to the latter.

<http://www.who.int/classifications/icd/icd10updates/en/index.html>

- 2) Deaths where there was not an inquest have been coded using the automated coding system developed by the U.S National Centre for Health Statistics (NCHS). Previously the Underlying Cause of Death was chosen manually for all deaths.
- 3) All deaths registered in the Quarter have been included in the statistics, in some cases with a provisional cause of death. Previously the practice was not to include deaths in the quarterly statistics until the cause of death had been definitely established.

Because of these changes, caution should be taken in directly comparing these mortality statistics with those of previous quarters. Many countries have found that moving to ICD10 does affect certain specific categories of causes of death. In particular, a significant drop in the number of deaths attributed to pneumonia and bronchopneumonia has been observed in some countries after moving to ICD10. These deaths were instead assigned to other conditions included on the death certificate.

The effect of the third change above has been to increase the number of deaths in our statistics as compared with previous years. Statistics for deaths due to external causes are particularly affected by this change. The previous method meant that some deaths were included in a later quarter of the year from when they had been registered, because of the delay involved in establishing a definite cause of death.

Revised rates

This report contains revisions to previously published rates for Marriages, Births and Deaths with effect from the second quarter of 2007. This is due to revised population estimates and the change from using De Facto population data to Usual Residence population data. All rates for periods prior to the second quarter of 2007 remain unchanged. These revisions were first published in the Vital Statistics First Quarter 2012 report.

Revised figures

This report contains upward revisions to previously published figures for births registered in quarter 3 of 2008, quarter 1 of 2009 and 2010, and also for the previously published numbers for deaths registered in quarter 1 of 2010 and 2011. The natural increase and totals for these years were also revised. These revisions were first published in the Vital Statistics Second Quarter 2011 report.

Glossary of terms

NUTS III Regional Authority areas

Border, Midland, West, Dublin, Mid-East, Mid-West, South-East, South-West

Border: Cavan, Donegal, Leitrim, Louth, Monaghan, Sligo.

Midland: Laois, Longford, Offaly, Westmeath.

West: Galway City, Galway County, Mayo, Roscommon.

Dublin: Dublin City, South Dublin, Fingal, Dun Laoghaire-Rathdown.

Mid-East: Kildare, Meath, Wicklow.

Mid-West: Clare, Limerick City, Limerick County, North Tipperary.

South-East: Carlow, Kilkenny, South Tipperary, Waterford City, Waterford County, Wexford.

South-West: Cork City, Cork County, Kerry.

Appendix

Causes of death Eurostat shortlist (August 1998)

Nr	Disease or external cause	ICD-9 Code	ICD-10 Code
00	All causes of death	001-E999	A00-Y89
01	Infectious and Parasitic Diseases:-	001-139,279.8	A00-B99
02	Tuberculosis	010-018,137	A15-A19,B90
03	Meningococcal Infection	036	A39
04	AIDS (HIV Disease)	042-044,279.8	B20-B24
05	Viral Hepatitis	070	B15-B19
	other Infectious and Parasitic Diseases	Rem (001-139)	Rem (A00-B99)
06	Neoplasms	140-239	C00-D48
07	Malignant Neoplasms of the:-	140-208	C00-C97
08	Lip, Oral Cavity, Pharynx	140-149	C00-C14
09	Oesophagus	150	C15
10	Stomach	151	C16
11	Colon	153	C18
12	Rectum and Anus	154	C19-C20-C21
13	Liver and the Intrahepatic Bile Ducts	155	C22
14	Pancreas	157	C25
15	Larynx and Trachea/Bronchus/Lung	161-162	C32-C34
16	Skin	172	C43
17	Breast	174-175	C50
18	Cervix Uteri	180	C53
19	Other Parts of the Uterus	179,182	C54-C55
20	Ovary	183.0	C56
21	Prostate	185	C61
22	Kidney	189.0	C64
23	Bladder	188	C67
24	Lymph/Haematopoietic Tissue	200-208	C81-C96
	other Malignant Neoplasms	Rem (140-208)	Rem. (C00-C97)
25	Diseases of the Blood and Blood-forming Organs, Immunological disorders ¹	279-289	D50-D89
26	Endocrine, Nutritional and Metabolic Diseases	240-278	E00-E90
27	Diabetes Mellitus	250	E10-E14
28	Mental and Behavioural Disorders	290-319	F00-F99
29	Alcohol abuse (including Alcohol Psychosis)	291,303	F10
30	Drug Dependence, Toxicomania	304-305	F11-F16,F18-F19
31	Diseases of the Nervous System and the Sense Organs	320-389	G00-H95
32	Meningitis	320-322	G00-G03
33	Diseases of the Circulatory System:-	390-459	I00-I99
34	Ischaemic Heart Disease	410-414	I20-I25
	<i>(Acute Myocardial Infarction)</i>	410	I21
35	Other Heart Disease	420-423,425-429	I30-I33,I39-I52
36	Cerebrovascular Disease	430-438	I60-I69
	other Diseases of the Circulatory System	Rem (390-459)	Rem. (I00-I99)
37	Diseases of the Respiratory System	460-519	J00-J99
38	Influenza	487	J10-J11
39	Pneumonia	480-486	J12-J18
40	Chronic Lower Respiratory Disease	490-494,496	J40-J47
41	Asthma	493	J45-J46
	other Diseases of the Respiratory System	Rem (460-519)	Rem. (J00-J99)
42	Diseases of the Digestive System	520-579	K00-K93
43	Ulcer of Stomach, Duodenum and Jejunum	531-534	K25-K28
44	Chronic Liver Disease	571.0-571.9	K70,K73-K74
	other Diseases of the Digestive System	Rem (520-579)	Rem. (K00-K93)
45	Diseases of the Skin and Subcutaneous Tissue	680-709	L00-L99
46	Diseases of the Musculoskeletal System/Connective Tissue	710-739	M00-M99
47	Rheumatoid Arthritis and Osteoarthritis	714-715	M05-M06,M15-M19
48	Diseases of the Genitourinary System	580-629	N00-N99
49	Diseases of the Kidney and Ureter	580-594	N00-N29
50	Complications of Pregnancy, Childbirth and Puerperium	630-676	O00-O99
51	Certain Conditions Originating in the Perinatal Period (stillbirths not included)	760-779	P00-P96
52	Congenital Malformations and Chromosomal Abnormalities	740-759	Q00-Q99
53	Congenital malformations of the Nervous System	740-742	Q00-Q07
54	Congenital malformations of the Circulatory System	745-747	Q20-Q28
55	Symptoms, Signs, Abnormal Findings, Ill-defined Causes	780-799	R00-R99
56	Sudden Infant Death Syndrome	798.0	R95
57	Unknown and Unspecified Causes	798.1-9,799	R96-R99
	Injury and Poisoning	800-999	S00-T98
58	External Causes of Injury and Poisoning (included in the Foregoing)	E800-E999	V01-Y89
59	Accidents	E800-E929	V01-X59
60	Transport Accidents	E800-E848	V01-V99
	Road transport Accidents	E810-E829, E929.0	V01-V80,V87,V89,Y85
	Motor vehicle transport Accidents	E810-E819	
61	Accidental Falls	E880-E888	W00-W19
62	Accidental Poisoning	E850-E869	X40-X49
	other accidents	Rem (E800-E929)	Rem (V01-X59)
63	Suicide and Intentional Self Harm	E950-E959	X60-X84
64	Homicide/Assault	E960-E969	X85-Y09
65	Cause Undetermined	E980-E989	Y10-Y34
	other External Causes	Rem (E930-E999)	

¹ 279.8 not included

Table A Estimated Population classified by Sex and Age Group, 2007 - 2012¹*thousands*

Sex and Age Group	Persons in April of each year					
	2007	2008	2009	2010	2011 ²	2012 ³
Total Persons	4,375.8	4,485.1	4,533.4	4,554.8	4,574.9	4,585.4
0 - 4 years	310.5	324.0	335.2	347.0	356.0	364.6
5 - 9 "	297.2	306.2	310.7	314.6	319.6	324.8
10 - 14 "	276.5	283.1	290.5	296.1	301.0	305.4
15 - 19 "	291.4	295.6	294.3	289.4	281.0	275.7
20 - 24 "	371.7	373.6	354.4	326.3	298.6	277.7
25 - 29 "	399.8	408.3	400.6	381.6	362.9	341.2
30 - 34 "	361.3	369.5	374.5	381.2	393.4	392.3
35 - 39 "	335.3	348.6	356.3	359.7	363.1	364.3
40 - 44 "	308.1	313.6	316.7	321.8	329.3	335.7
45 - 49 "	281.2	288.5	295.6	300.9	304.1	308.1
50 - 54 "	253.2	258.0	262.3	267.4	273.7	278.2
55 - 59 "	227.9	232.6	235.7	239.6	243.4	248.0
60 - 64 "	190.7	199.8	207.7	214.0	217.1	220.0
65 - 69 "	144.1	149.8	156.6	163.5	172.1	181.5
70 - 74 "	119.5	121.7	124.6	127.9	130.1	132.7
75 - 79 "	92.5	94.5	96.8	99.1	101.4	103.6
80 - 84 "	65.6	65.9	66.9	68.4	69.8	71.0
85 years and over	49.4	51.9	54.0	56.1	58.2	60.5
Total males	2,191.3	2,238.6	2,257.3	2,262.2	2,270.5	2,269.6
0 - 4 years	159.4	165.9	171.4	177.6	182.0	186.0
5 - 9 "	151.9	156.3	158.5	160.8	163.5	166.1
10 - 14 "	141.9	145.3	149.2	152.1	154.5	156.4
15 - 19 "	147.5	149.6	150.3	147.7	143.7	141.3
20 - 24 "	187.6	186.5	173.5	160.1	148.6	138.6
25 - 29 "	202.6	204.7	198.4	186.1	175.1	163.5
30 - 34 "	184.6	186.9	188.1	189.8	194.9	191.3
35 - 39 "	171.3	177.6	180.3	181.0	181.9	181.5
40 - 44 "	154.9	157.5	159.5	162.2	165.9	168.5
45 - 49 "	141.2	144.5	147.9	149.8	151.3	153.1
50 - 54 "	127.4	129.5	131.6	133.7	136.7	138.2
55 - 59 "	115.2	117.3	118.7	120.3	121.8	123.6
60 - 64 "	96.1	101.0	104.9	107.6	109.2	110.0
65 - 69 "	71.9	74.4	78.0	81.5	85.6	90.6
70 - 74 "	56.9	58.1	59.8	61.8	62.9	64.4
75 - 79 "	40.8	42.4	43.9	45.1	46.3	47.6
80 - 84 "	25.0	25.3	26.3	27.3	28.3	29.4
85 years and over	15.2	15.9	16.8	17.7	18.4	19.4
Total females	2,184.6	2,246.5	2,276.1	2,292.6	2,304.4	2,315.8
0 - 4 years	151.1	158.1	163.8	169.4	174.1	178.6
5 - 9 "	145.4	150.0	152.2	153.8	156.2	158.7
10 - 14 "	134.6	137.9	141.2	144.0	146.6	149.0
15 - 19 "	144.0	146.0	143.9	141.7	137.4	134.4
20 - 24 "	184.1	187.1	180.9	166.2	149.9	139.2
25 - 29 "	197.2	203.6	202.1	195.6	187.8	177.7
30 - 34 "	176.8	182.6	186.4	191.4	198.5	201.0
35 - 39 "	164.0	171.0	176.0	178.7	181.2	182.9
40 - 44 "	153.2	156.1	157.3	159.6	163.4	167.1
45 - 49 "	140.1	143.9	147.7	151.1	152.9	155.0
50 - 54 "	125.8	128.5	130.7	133.7	137.1	140.0
55 - 59 "	112.7	115.3	117.0	119.3	121.6	124.3
60 - 64 "	94.5	98.8	102.8	106.4	107.9	109.9
65 - 69 "	72.2	75.4	78.6	82.0	86.5	90.9
70 - 74 "	62.6	63.6	64.8	66.2	67.2	68.3
75 - 79 "	51.6	52.1	52.9	54.0	55.0	55.9
80 - 84 "	40.5	40.5	40.6	41.0	41.5	41.6
85 years and over	34.2	36.0	37.2	38.5	39.8	41.1

¹ The population estimates for year ending April 2007 and later periods are based on the Usual Residence concept.² Census of Population³ Preliminary

