



**An Phríomh-Oifig Staidrimh**  
Central Statistics Office

# **Vital Statistics**

## **Second Quarter**

**2012**

Published by the Stationery Office, Dublin, Ireland.

Available from:

Central Statistics Office, Information Section, Skehard Road, Cork.

Compiled by the Central Statistics Office on behalf of the Department of Social Protection.

[No. 594]

December 2012

© Government of Ireland 2012

Material compiled and presented by  
Central Statistics Office.

Reproduction is authorised, except for commercial  
purposes, provided the source is acknowledged.

Print ISSN 2009-5325

On-line ISSN 2009-5333

# Contents

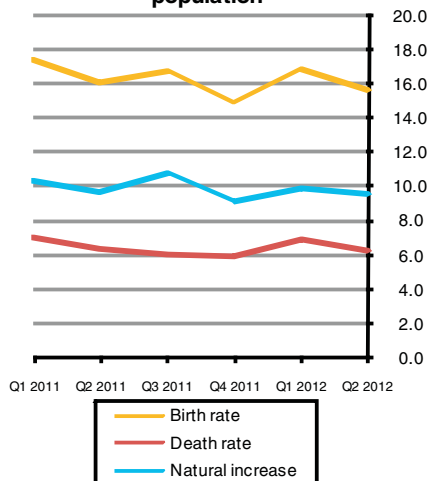
## Second Quarter 2012

	<b>Page</b>
<b>Commentary</b>	4
<b>Tables</b>	
Table 1a	8
Table 1b	8
Table 2a	9
Table 2b	9
Table 3	10
Table 4	11
Table 5	12
Table 6	13
Table 7	14
Table 8	15
Table 9	16
Table 10	17
Table 11	17
Table 12	18
Table 13	19
Table 14	20
Table 15	22
Table 16	24
Table 17	26
Background Notes	27
Glossary of terms	28
<b>Appendix</b>	
Causes of death Eurostat shortlist (August 1998)	30
Estimated population classified by sex and age group, 2007-2012	31

## Second Quarter 2012

### Commentary

**Fig. 1.1 Annual birth, death and natural increase rates per 1,000 population**



### Introduction

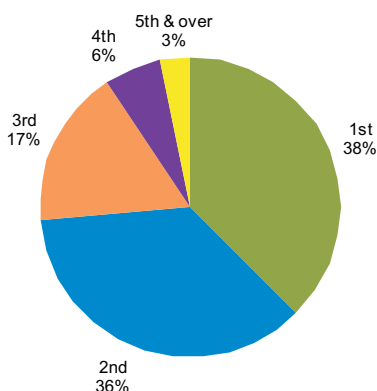
This report has been prepared by the Central Statistics Office for the Minister for Social Protection in accordance with the provisions of Section 2 of the Vital Statistics and Births, Deaths and Marriages Registration Act, 1952, Section 73 of the Civil Registration Act 2004 and Government Order SI No. 831 of 2007.

### Births

There were 17,958 births registered in quarter 2 of 2012, 9,236 males and 8,722 females. The corresponding total for quarter 2 2011 was 423 higher at 18,381 births, while the quarter 2 2007 total was 831 lower at 17,127 births. The quarter 2 2012 total is 15.2% higher than in 2003 when 15,582 babies were registered. See tables 1, 3, 4 and 5.

The 17,958 births represent an annual birth rate of 15.7 per 1,000 of the population, 0.4 lower than quarter 2 of 2011. See tables 1, 4, 5 and fig. 1.1.

**Fig. 1.2 Birth Order Q2 2012**



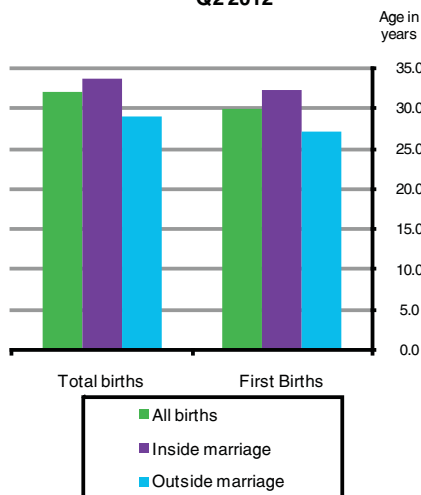
### Birth order

A total of 6,718 births (37.5%) were to first time mothers in quarter 2 of 2012. Second time mothers had 6,454 births (36.0%). First births in the second quarter of 2011 and 2007 accounted for 38.8% and 40.9% of all births, respectively. The number of first births registered in quarter 2 2003 was 6,095 (39.5%). See tables 1, 3, 4, 6 and fig. 1.2.

### Age of mothers

The average age of mothers for births registered in quarter 2 2012 was 31.9 years, 0.1 years more than the corresponding figure in quarter 2 2011, 0.7 years more than in quarter 2 2007, and 1.3 years more than in quarter 2 2003. The average age of mothers having their first child in quarter 2 2012 was 29.9 years. See tables 3, 9 and fig. 1.3.

**Fig. 1.3 Average age at maternity Q2 2012**



### Births outside marriage/civil partnership

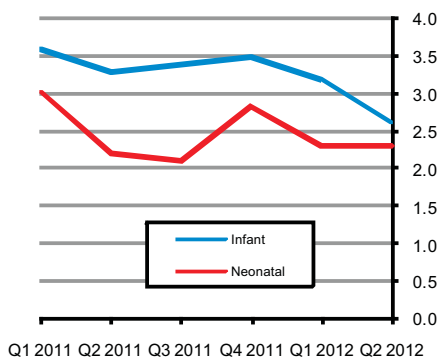
There were 6,164 births registered as outside marriage/civil partnership in quarter 2 of 2012. This accounted for 34.3% of all births, an increase of 1.6 percentage points on quarter 2 2011 and an increase of 2.6 percentage points on quarter 2 2007. The highest percentage of births outside marriage/civil partnership was in Limerick City at 58%, while the lowest percentage of births outside marriage/civil partnership was in Galway County at 23%. In quarter 2 2003, 4,689 births were registered as outside marriage or 30.1% of all births. See tables 1, 3, 4, 8 and 10.

The average age of mothers at maternity outside of marriage/civil partnership, was 28.9 years. This ranged from 26.7 years in Carlow to 31.1 years in Dun Laoghaire Rathdown. See table 10.

### Deaths

There were 7,080 deaths registered in quarter 2 2012, 3,586 males and 3,494 females. The quarter 2 2012 total is 2.7% lower than in the corresponding quarter of 2011 and 2.6% higher than in quarter 2 2007, when 7,277 and 6,902 deaths were registered. See tables 2, 3, 12 and fig. 1.1.

**Fig. 1.4 Infant and neonatal mortality rates per 1,000 live births**



### Age at death

There were 47 infant deaths registered in quarter 2 2012 giving an infant mortality rate of 2.6 deaths per 1,000 live births. Neonatal deaths are deaths of infants at ages under 4 weeks. There were 41 neonatal deaths registered in quarter 2 2012, a neonatal mortality rate of 2.3 deaths per 1,000 live births. See *tables 3, 4 and fig.1.4*.

There were 5,629 deaths of persons aged 65 and over registered in quarter 2 2012. This represents an annual death rate of 41.0 per 1,000 population aged 65 and over and represents a decrease of just under 3.1% when compared with the corresponding quarter of 2011. See *tables 3 and 4*.

### Cause of death

- **Diseases of the Heart and Arteries:**

Diseases of the Circulatory System accounted for 2,314 deaths, or an annual rate of 2.0 per 1,000 population. Of these, 1,163 were due to Ischaemic Heart Disease and 494 to Cerebrovascular Disease. See *tables 2, 14 and fig.1.5*.

- **Malignant Cancers:**

There were 2,037 deaths from malignant neoplasms. This is equivalent to an annual rate of 1.8 per 1,000 population. See *tables 2, 14 and fig.1.5*.

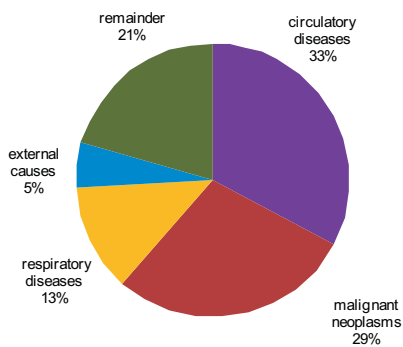
- **Lung Diseases:**

Deaths from pneumonia numbered 296; chronic lower respiratory disease accounted for 388 deaths and 208 deaths resulted from other respiratory diseases. See *tables 2, 14 and fig.1.5*.

- **Accidents, suicides and other:**

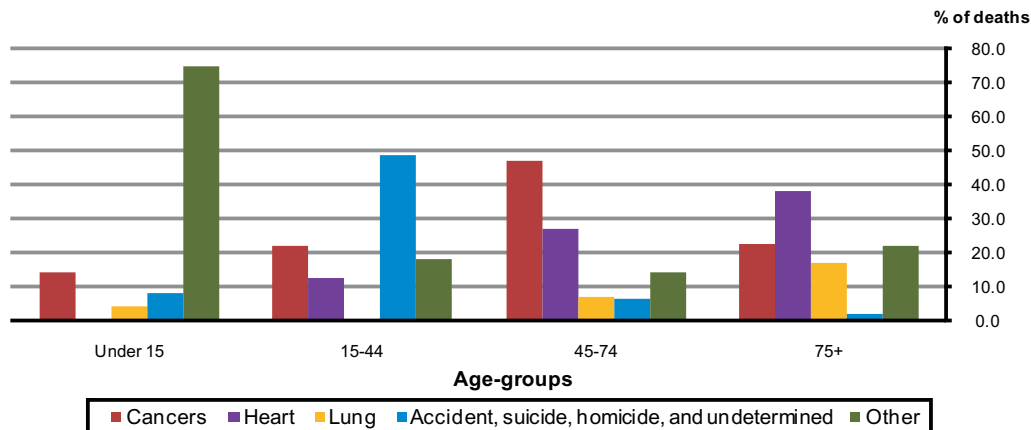
There were 384 deaths due to accidents, suicides and other external causes. Accidents accounted for 59.6% (229) of these deaths, while suicides accounted for 30.7% (118). Of these 384 deaths, 72.7% were male. See *tables 2, 14 and fig.1.5*.

**Fig. 1.5 Principal causes of death, Q2 2012**



The leading cause of death in quarter 2 2012 varied widely by age group. Among adults aged 15 to 44, external causes of death including accidents, suicide and other ranked first. Among individuals aged 45-74, cancers were the leading cause, while for those aged 75 and older, it was diseases of the heart and arteries. See tables 14 and fig.1.6.

**Fig. 1.6 Causes of death classified by age-groups, quarter 2 2012**



### Natural increase

The natural increase in the population (births minus deaths) for quarter 2 2012 was 10,878. This represents a rate of 9.5 per 1,000 population, 0.2 per thousand lower than quarter 2 of 2011. See tables 3, 4 and fig.1.1.

### Marriages

The number of marriages registered during the quarter was 5,421 equivalent to an annual marriage rate of 4.7 per 1,000 population, 0.3 per 1,000 population above the corresponding quarter of 2011. The quarter 2 2012 total is 12.3% higher than in quarter 2 2003 when 4,827 marriages were registered. See tables 1, 3 and .4.

### Civil Partnerships

Civil Partnership legislation was introduced in Ireland on the 4<sup>th</sup> January 2011. The number of civil partnerships registered in the second quarter of 2012 was 120. This is equivalent to an annual rate of 0.10 per 1,000 population and is 0.06 per 1,000 population below the rate for the corresponding quarter of 2011. See tables 1, 3 and 4.

### Population

The estimated population (usual residence) in April 2012 was 4,585,400.

## **Tables**

**Table 1a Marriages, Civil Partnerships and births by quarter, 2007, 2011 and 2012**

Event	Q2 of 2007			Q2 of 2011			Q1 of 2012			Q2 of 2012		
	Number	% of total	Rate <sup>1</sup>	Number	% of total	Rate <sup>1</sup>	Number	% of total	Rate <sup>1</sup>	Number	% of total	Rate <sup>1</sup>
<b>Marriages</b>	<b>5,536</b>	<b>100.0</b>	<b>5.1</b>	<b>5,025</b>	<b>100.0</b>	<b>4.4</b>	<b>2,827</b>	<b>100.0</b>	<b>2.5</b>	<b>5,421</b>	<b>100.0</b>	<b>4.7</b>
<b>Civil Partnerships<sup>2</sup></b>	-	-	-	<b>184</b>	<b>100.0</b>	<b>0.16</b>	<b>82</b>	<b>100.0</b>	<b>0.07</b>	<b>120</b>	<b>100.0</b>	<b>0.10</b>
<b>Live Births total</b>	<b>17,127</b>	<b>100.0</b>	<b>15.7</b>	<b>18,381</b>	<b>100.0</b>	<b>16.1</b>	<b>19,313</b>	<b>100.0</b>	<b>16.9</b>	<b>17,958</b>	<b>100.0</b>	<b>15.7</b>
<i>of which;</i>												
inside marriage/CP*	11,745	68.6	10.7	12,368	67.3	10.8	12,384	64.1	10.8	11,794	65.7	10.3
outside marriage/CP*	5,428	31.7	5.0	6,013	32.7	5.3	6,929	35.9	6.1	6,164	34.3	5.4
<b>Sex of child</b>												
Male	8,667	50.6	7.9	9,428	51.3	8.2	9,975	51.6	8.7	9,236	51.4	8.1
Female	8,460	49.4	7.7	8,953	48.7	7.8	9,338	48.4	8.2	8,722	48.6	7.6
<b>Residence of mother</b>												
Border	1,792	10.5	14.8	1,997	10.9	15.5	1,866	9.7	14.5	1,869	10.4	14.6
Midland	1,032	6.0	15.7	1,195	6.5	16.8	1,211	6.3	17.1	1,178	6.6	16.4
West	1,508	8.8	14.3	1,681	9.1	15.3	1,726	8.9	15.7	1,649	9.2	15.1
Dublin	4,783	27.9	15.5	5,185	28.2	16.4	5,769	29.9	18.3	5,336	29.7	16.9
Mid-East	2,271	13.3	18.3	2,484	13.5	18.6	2,498	12.9	18.7	2,231	12.4	16.5
Mid-West	1,442	8.4	15.7	1,380	7.5	14.6	1,525	7.9	16.1	1,383	7.7	14.6
South-East	1,861	10.9	15.7	1,926	10.5	15.4	2,052	10.6	16.4	1,842	10.3	14.7
South-West	2,438	14.2	15.3	2,533	13.8	15.3	2,666	13.8	16.1	2,470	13.8	14.8
<b>Previous no. of liveborn children</b>												
0	6,901	40.3	6.3	7,080	38.5	6.2	7,693	39.8	6.7	6,718	37.4	5.9
1	5,271	30.8	4.8	6,319	34.4	5.5	6,610	34.2	5.8	6,454	35.9	5.6
2	2,686	15.7	2.5	3,141	17.1	2.7	3,243	16.8	2.8	3,080	17.2	2.7
3	999	5.8	0.9	1,154	6.3	1.0	1,112	5.8	1.0	1,084	6.0	0.9
4	341	2.0	0.3	358	1.9	0.3	348	1.8	0.3	360	2.0	0.3
5 or more	222	1.3	0.2	217	1.2	0.2	233	1.2	0.2	212	1.2	0.2
Not stated	707	4.1	0.6	112	0.6	0.1	74	0.4	0.1	50	0.3	0.0
<b>Nationality</b>												
Ireland	-	-	-	14,194	77.2	12.4	14,773	76.5	12.9	13,546	75.4	11.8
United Kingdom	-	-	-	352	1.9	0.3	394	2.0	0.3	386	2.1	0.3
Other EU15	-	-	-	260	1.4	0.2	256	1.3	0.2	258	1.4	0.2
Accession states	-	-	-	1,952	10.6	1.7	2,038	10.6	1.8	2,024	11.3	1.8
Other	-	-	-	1,480	8.1	1.3	1,620	8.4	1.4	1,534	8.5	1.3
Not stated	-	-	-	143	0.8	0.1	232	1.2	0.2	210	1.2	0.2
<b>Total</b>	-	-	-	<b>18,381</b>	<b>100.0</b>	<b>16.1</b>	<b>19,313</b>	<b>100.0</b>	<b>16.9</b>	<b>17,958</b>	<b>100.0</b>	<b>15.7</b>

<sup>1</sup> Rate per year per 1,000 population. Rates based on estimated usual residence population for given year. Rates for residence of mother are based on census/estimated regional population for given year.

<sup>2</sup> Civil Partnership was introduced in Ireland on 4th January 2011.

\* CP denotes "Civil Partnership".

**Table 1b Births classified by age of mother at maternity by quarter, 2007, 2011 and 2012 and their corresponding annual age specific (asfr) and total period fertility rates (tpfr)**

Age	Q2 of 2007			Q2 of 2011			Q1 of 2012			Q1 of 2012		
	Number	% of total	Fertility rate	Number	% of total	Fertility rate	Number	% of total	Fertility rate	Number	% of total	Fertility rate
< 20 years	640	3.7	17.8	402	2.2	11.7	460	2.4	13.4	388	2.2	11.5
20-24 years	2,039	11.9	44.3	1,748	9.5	46.6	1,900	9.8	50.7	1,789	10.0	51.4
25-29 years	3,975	23.2	80.6	4,247	23.1	90.5	4,300	22.3	91.7	3,911	21.8	88.0
30-34 years	5,909	34.5	133.7	6,567	35.7	132.4	6,990	36.2	140.9	6,437	35.8	128.1
35-39 years	3,784	22.1	92.3	4,478	24.4	98.9	4,630	24.0	102.3	4,428	24.7	96.9
40-44 years	751	4.4	19.6	892	4.9	21.8	966	5.0	23.7	948	5.3	22.7
45+ years	24	0.1	0.7	43	0.2	1.1	54	0.3	1.4	52	0.3	1.3
Not stated	5	0.0	-	4	0.0	-	13	0.1	-	5	0.0	-
<b>Total</b>	<b>17,127</b>	<b>100.0</b>	<b>1.9</b>	<b>18,381</b>	<b>100.0</b>	<b>2.0</b>	<b>19,313</b>	<b>100.0</b>	<b>2.1</b>	<b>17,958</b>	<b>100.0</b>	<b>2.0</b>



**Table 2a Deaths registered by cause of death and by quarter, 2007, 2011 and 2012**

Quarter	Malignant Cancers		Diseases of the heart and arteries		Lung diseases		Accidents, Suicides & Others		Other Causes		Total	% of total
		% of total		% of total		% of total		% of total		% of total		
Q2 of 2012	2,037	28.8	2,314	32.7	892	12.6	384	5.4	1,453	20.5	7,080	100.0
Q1 of 2012	2,343	29.4	2,541	31.8	1,123	14.1	379	4.7	1,593	20.0	7,979	100.0
Q2 of 2011	2,198	30.2	2,351	32.3	920	12.6	434	6.0	1,374	18.9	7,277	100.0
Q2 of 2007	1,930	28.0	2,432	35.2	895	13.0	420	6.1	1,225	17.7	6,902	100.0

**Table 2b Deaths registered by cause of death, by age and region, Second Quarter 2012**

Age (years)	Malignant Cancers		Diseases of the heart and arteries		Lung diseases		Accidents, Suicides & Others		Other Causes		Total	% of total
		% of total		% of total		% of total		% of total		% of total		
<b>Persons</b>												
Under 1	1	0.0	-	0.0	-	0.0	-	0.0	46	3.2	47	0.7
1 - 4	5	0.2	-	0.0	1	0.1	4	1.0	6	0.4	16	0.2
5 - 14	4	0.2	-	0.0	2	0.2	2	0.5	8	0.6	16	0.2
15 - 24	6	0.3	4	0.2	-	0.0	35	9.1	8	0.6	53	0.7
25 - 34	18	0.9	6	0.3	-	0.0	60	15.6	11	0.8	95	1.3
35 - 44	51	2.5	31	1.3	-	0.0	71	18.5	42	2.9	195	2.8
45 - 54	127	6.2	80	3.5	13	1.5	53	13.8	49	3.4	322	4.5
55 - 64	349	17.1	170	7.3	38	4.3	43	11.2	107	7.4	707	10.0
65 - 74	532	26.1	339	14.6	100	11.2	38	9.9	178	12.3	1,187	16.8
75 - 84	627	30.8	701	30.3	316	35.4	31	8.1	432	29.7	2,107	29.8
85 +	317	15.6	983	42.5	422	47.3	47	12.2	566	39.0	2,335	33.0
<b>Total</b>	<b>2,037</b>	<b>100.0</b>	<b>2,314</b>	<b>100.0</b>	<b>892</b>	<b>100.0</b>	<b>384</b>	<b>100.0</b>	<b>1,453</b>	<b>100.0</b>	<b>7,080</b>	<b>100.0</b>
<b>Males</b>												
Under 1	1	0.0	-	0.0	-	0.0	-	0.0	25	1.7	26	0.4
1 - 4	4	0.2	-	0.0	-	0.0	4	1.0	2	0.1	10	0.1
5 - 14	2	0.1	-	0.0	1	0.1	-	0.0	6	0.4	9	0.1
15 - 24	3	0.1	4	0.2	-	0.0	27	7.0	7	0.5	41	0.6
25 - 34	10	0.5	5	0.2	-	0.0	50	13.0	6	0.4	71	1.0
35 - 44	18	0.9	23	1.0	-	0.0	56	14.6	21	1.4	118	1.7
45 - 54	56	2.7	57	2.5	11	1.2	42	10.9	27	1.9	193	2.7
55 - 64	188	9.2	123	5.3	23	2.6	33	8.6	61	4.2	428	6.0
65 - 74	318	15.6	228	9.9	63	7.1	28	7.3	99	6.8	736	10.4
75 - 84	349	17.1	348	15.0	176	19.7	20	5.2	208	14.3	1,101	15.6
85 +	134	6.6	343	14.8	173	19.4	19	4.9	184	12.7	853	12.0
<b>Total</b>	<b>1,083</b>	<b>53.2</b>	<b>1,131</b>	<b>48.9</b>	<b>447</b>	<b>50.1</b>	<b>279</b>	<b>72.7</b>	<b>646</b>	<b>44.5</b>	<b>3,586</b>	<b>50.6</b>
<b>Females</b>												
Under 1	-	0.0	-	0.0	-	0.0	-	0.0	21	1.4	21	0.3
1 - 4	1	0.0	-	0.0	1	0.1	-	0.0	4	0.3	6	0.1
5 - 14	2	0.1	-	0.0	1	0.1	2	0.5	2	0.1	7	0.1
15 - 24	3	0.1	-	0.0	-	0.0	8	2.1	1	0.1	12	0.2
25 - 34	8	0.4	1	0.0	-	0.0	10	2.6	5	0.3	24	0.3
35 - 44	33	1.6	8	0.3	-	0.0	15	3.9	21	1.4	77	1.1
45 - 54	71	3.5	23	1.0	2	0.2	11	2.9	22	1.5	129	1.8
55 - 64	161	7.9	47	2.0	15	1.7	10	2.6	46	3.2	279	3.9
65 - 74	214	10.5	111	4.8	37	4.1	10	2.6	79	5.4	451	6.4
75 - 84	278	13.6	353	15.3	140	15.7	11	2.9	224	15.4	1,006	14.2
85 +	183	9.0	640	27.7	249	27.9	28	7.3	382	26.3	1,482	20.9
<b>Total</b>	<b>954</b>	<b>46.8</b>	<b>1,183</b>	<b>51.1</b>	<b>445</b>	<b>49.9</b>	<b>105</b>	<b>27.3</b>	<b>807</b>	<b>55.5</b>	<b>3,494</b>	<b>49.4</b>
<b>Region</b>												
Border	232	11.4	285	12.3	112	12.6	41	10.7	194	13.4	864	12.2
Midland	130	6.4	162	7.0	62	7.0	20	5.2	86	5.9	460	6.5
West	196	9.6	291	12.6	122	13.7	36	9.4	150	10.3	795	11.2
Dublin	544	26.7	525	22.7	208	23.3	84	21.9	387	26.6	1,748	24.7
Mid-East	179	8.8	208	9.0	80	9.0	29	7.6	119	8.2	615	8.7
Mid-West	183	9.0	215	9.3	81	9.1	38	9.9	131	9.0	648	9.2
South-East	246	12.1	259	11.2	99	11.1	50	13.0	186	12.8	840	11.9
South-West	327	16.1	369	15.9	128	14.3	86	22.4	200	13.8	1,110	15.7
<b>Total</b>	<b>2,037</b>	<b>100.0</b>	<b>2,314</b>	<b>100.0</b>	<b>892</b>	<b>100.0</b>	<b>384</b>	<b>100.0</b>	<b>1,453</b>	<b>100.0</b>	<b>7,080</b>	<b>100.0</b>

**Table 3 Marriages, civil partnerships, births, deaths and natural increase**

	Marriages <sup>1</sup>	Civil Partnerships	Live Births				Deaths <sup>2</sup>				Natural Increase
			Total	First	Outside marriage/civil partnerships	Average Age	Total	Infant	Neo-natal	65 & over	
<b>Quarter 1</b>											
2003	2,571	-	15,238	6,158	5,080	30.3	7,756	67	52	6,259	7,482
2004	2,755	-	15,599	6,082	5,181	30.7	7,873	72	56	6,347	7,726
2005	2,892	-	15,334	6,290	5,147	30.9	7,352	65	47	5,920	7,982
2006	3,329	-	15,958	6,449	5,481	30.9	7,320	56	36	6,040	8,638
2007	3,401	-	17,473	7,226	5,905	31.1	7,910	48	37	6,326	9,563
2008	3,228	-	19,154	8,088	6,480	31.1	7,525	63	42	6,011	11,629
2009	3,450	-	19,437	8,173	6,621	31.2	8,419	59	41	6,739	11,018
2010	3,381	-	19,787	8,312	6,829	31.4	8,006	62	39	6,419	11,781
2011	3,052	6	19,950	8,008	6,768	31.7	8,093	72	60	6,455	11,857
2012	2,827	82	19,313	7,693	6,929	31.8	7,979	61	45	6,445	11,334
<b>Quarter 2</b>											
2003	4,827	-	15,582	6,095	4,689	30.6	7,203	83	59	5,625	8,379
2004	4,953	-	15,535	5,897	4,874	30.8	6,881	74	53	5,351	8,654
2005	5,374	-	15,306	5,922	4,810	31.1	7,349	70	52	5,826	7,957
2006	5,274	-	15,979	6,315	5,056	31.1	6,967	65	44	5,488	9,012
2007	5,558	-	17,127	6,926	5,428	31.2	6,902	60	34	5,394	10,225
2008	5,351	-	19,040	7,712	6,174	31.2	7,569	90	62	5,857	11,471
2009	5,432	-	18,844	7,858	6,114	31.3	7,020	52	41	5,356	11,824
2010	5,003	-	18,844	7,749	6,205	31.5	6,929	84	54	5,344	11,915
2011	5,025	184	18,381	7,080	6,013	31.8	7,277	61	41	5,618	11,104
2012	5,421	120	17,958	6,718	6,164	31.9	7,080	47	41	5,629	10,878
<b>Quarter 3</b>											
2003	7,996	-	15,909	6,240	4,981	30.6	6,639	85	68	5,147	9,270
2004	8,376	-	15,605	6,171	5,100	30.8	6,473	72	43	5,123	9,132
2005	8,347	-	16,170	6,548	5,101	30.9	6,380	50	33	4,919	9,790
2006	8,335	-	16,920	6,891	5,541	31.0	6,657	58	46	5,146	10,263
2007	8,949	-	18,554	7,636	6,019	31.1	6,455	48	32	4,976	12,099
2008	8,751	-	19,650	8,259	6,523	31.1	6,674	67	50	5,108	12,976
2009	8,047	-	19,289	8,170	6,256	31.2	6,638	80	53	5,039	12,651
2010	7,787	-	19,171	7,815	6,481	31.4	6,517	71	48	5,010	12,654
2011	7,538	204	19,222	7,514	6,543	31.7	6,911	65	41	5,303	12,311
2012											
<b>Quarter 4</b>											
2003	4,908	-	14,788	5,883	4,563	30.7	7,225	76	52	5,568	7,563
2004	4,895	-	14,945	5,975	4,783	30.9	6,924	82	62	5,253	8,021
2005	4,742	-	14,232	5,861	4,470	31.1	6,360	59	45	4,827	7,872
2006	5,151	-	15,380	6,456	5,217	31.0	6,535	58	42	4,946	8,845
2007	4,848	-	17,466	7,481	5,818	31.1	6,783	65	46	5,128	10,683
2008	4,857	-	17,880	7,608	5,904	31.2	6,424	70	46	4,871	11,456
2009	4,698	-	17,358	7,426	5,757	31.4	6,821	49	34	5,098	10,537
2010	4,464	-	17,174	7,244	5,865	31.5	6,113	65	49	4,763	11,061
2011	4,264	142	17,097	6,841	5,866	31.8	6,714	60	48	5,255	10,383
2012											
<b>Total</b>											
2003	20,302	-	61,517	24,376	19,313	30.6	28,823	311	231	22,599	32,694
2004	20,979	-	61,684	24,125	19,938	30.8	28,151	300	214	22,074	33,533
2005	21,355	-	61,042	24,621	19,528	31.0	27,441	244	177	21,492	33,601
2006	22,089	-	64,237	26,111	21,295	31.0	27,479	237	168	21,620	36,758
2007	22,756	-	70,620	29,269	23,170	31.1	28,050	221	149	21,824	42,570
2008	22,187	-	75,724	31,667	25,081	31.1	28,192	290	200	21,847	47,532
2009	21,627	-	74,928	31,627	24,748	31.3	28,898	240	169	22,232	46,030
2010	20,635	-	74,976	31,120	25,380	31.5	27,565	282	190	21,536	47,411
2011	19,879	536	74,650	29,441	25,190	31.8	28,995	258	190	22,631	45,655
2012											

<sup>1</sup> 2002 and 2004 - 2009 marriage figures are final. All other marriage figures are subject to revision.<sup>2</sup> See 'Background Notes' for changes in methodology effective from 2007.

**Table 4 Annual marriage, civil partnership, birth, death and natural increase rates per 1,000 population<sup>1</sup>**

	Marriages	Civil Partnerships	Live Births			Deaths				Natural Increase
			Total	% First births <sup>2</sup>	% Outside marriage/civil partnerships	Total	Infant <sup>3</sup> Mortality	Neo-natal <sup>4</sup> Mortality	65 & over	
<b>Quarter 1</b>										
2003	2.6	-	15.6	40.7	33.3	7.9	4.4	3.4	57.4	7.6
2004	2.8	-	15.7	40.4	33.2	7.9	4.6	3.6	57.5	7.8
2005	2.9	-	15.2	41.3	33.6	7.3	4.2	3.1	52.7	7.9
2006	3.2	-	15.4	41.1	34.3	7.1	3.5	2.3	52.6	8.4
2007	3.2	-	16.5	42.2	33.8	7.5	2.7	2.1	54.1	9.0
2008	3.0	-	17.5	42.6	33.8	6.9	3.3	2.2	51.0	10.6
2009	3.1	-	17.3	42.2	34.1	7.5	3.0	2.1	55.7	9.8
2010	3.0	-	17.5	42.1	34.5	7.1	3.1	2.0	51.5	10.4
2011	2.7	0.01	17.5	40.3	33.9	7.1	3.6	3.0	50.1	10.4
2012	2.5	0.07	16.9	40.0	35.9	7.0	3.2	2.3	48.5	9.9
<b>Quarter 2</b>										
2003	4.9	-	15.7	39.5	30.1	7.2	5.3	3.8	50.9	8.4
2004	4.9	-	15.4	38.8	31.4	6.8	4.8	3.4	47.6	8.6
2005	5.2	-	14.8	38.8	31.4	7.1	4.6	3.4	50.8	7.7
2006	5.0	-	15.1	41.1	31.6	6.6	4.1	2.8	46.9	8.5
2007	5.1	-	15.7	40.9	31.7	6.3	3.5	2.0	45.8	9.3
2008	4.8	-	17.0	40.8	32.4	6.8	4.7	3.3	48.4	10.2
2009	4.8	-	16.6	42.0	32.4	6.2	2.8	2.2	42.9	10.4
2010	4.4	-	16.5	41.3	32.9	6.1	4.5	2.9	41.5	10.5
2011	4.4	0.16	16.1	38.8	32.7	6.4	3.3	2.2	42.3	9.7
2012	4.7	0.10	15.7	37.5	34.3	6.2	2.6	2.3	41.0	9.5
<b>Quarter 3</b>										
2003	8.0	-	16.0	39.6	31.3	6.7	5.3	4.3	46.6	9.3
2004	8.3	-	15.4	39.8	32.7	6.4	4.6	2.8	45.6	9.0
2005	8.1	-	15.6	40.7	31.5	6.2	3.1	2.0	42.9	9.5
2006	7.9	-	16.0	41.6	32.7	6.3	3.4	2.7	44.0	9.7
2007	8.2	-	17.0	41.4	32.4	5.9	2.6	1.7	42.3	11.1
2008	7.8	-	17.5	42.2	33.2	6.0	3.4	2.5	42.2	11.6
2009	7.1	-	17.0	42.6	32.4	5.9	4.1	2.7	40.4	11.2
2010	6.8	-	16.8	41.0	33.8	5.7	3.7	2.5	38.9	11.1
2011	6.6	0.18	16.8	39.3	34.0	6.0	3.4	2.1	39.9	10.8
2012										
<b>Quarter 4</b>										
2003	4.9	-	14.9	40.9	30.9	7.3	5.1	3.5	50.4	7.6
2004	4.8	-	14.8	40.3	32.0	6.8	5.5	4.1	46.7	7.9
2005	4.6	-	13.8	41.4	31.4	6.2	4.1	3.2	42.1	7.6
2006	4.9	-	14.5	42.3	33.9	6.2	3.8	2.7	42.3	8.3
2007	4.4	-	16.0	43.2	33.3	6.2	3.7	2.6	43.5	9.8
2008	4.3	-	15.9	42.8	33.0	5.7	3.9	2.6	40.3	10.2
2009	4.1	-	15.3	42.9	33.2	6.0	2.8	2.0	40.9	9.3
2010	3.9	-	15.1	42.4	34.2	5.4	3.8	2.9	37.0	9.7
2011	3.7	0.12	14.9	40.2	34.3	5.9	3.5	2.8	39.5	9.1
2012										
<b>Total</b>										
2003	5.1	-	15.5	40.2	31.4	7.2	5.1	3.8	51.1	8.2
2004	5.2	-	15.2	39.8	32.3	7.0	4.9	3.5	49.1	8.3
2005	5.2	-	14.8	40.5	32.0	6.6	4.0	2.9	46.8	8.1
2006	5.2	-	15.2	41.5	33.2	6.5	3.7	2.6	46.2	8.7
2007	5.2	-	16.1	41.9	32.8	6.4	3.1	2.1	46.3	9.7
2008	4.9	-	16.9	42.1	33.1	6.3	3.8	2.6	45.2	10.6
2009	4.8	-	16.5	42.4	33.0	6.4	3.2	2.3	44.6	10.2
2010	4.5	-	16.5	41.7	33.9	6.1	3.8	2.5	41.8	10.4
2011	4.3	0.12	16.3	39.6	33.7	6.3	3.5	2.5	42.6	10.0
2012										

<sup>1</sup> Rates from Q2 2007 to 2012 are calculated using the Usual Residence population figures. Rates prior to Q2 2007 are based on estimated De Facto populations.<sup>2</sup> First births divided by the total number of live births (excluding those with unstated parity), multiplied by 100.<sup>3</sup> Infant mortality is the number of infant deaths per 1,000 live births.<sup>4</sup> Neonatal mortality is the number of neonatal (infants aged under 4 weeks) deaths per 1,000 live births.

**Table 5 Births registered, classified by area of residence of mother, April - June 2012**

Area of residence	Total	Male	Female	Rate <sup>1</sup>
<b>STATE</b>	<b>17,958</b>	<b>9,236</b>	<b>8,722</b>	<b>15.7</b>
<b>LEINSTER</b>	<b>10,290</b>	<b>5,250</b>	<b>5,040</b>	<b>16.4</b>
Carlow	212	118	94	15.5
Dublin City	2,016	1,030	986	15.6
South Dublin	1,246	626	620	18.6
Fingal	1,351	683	668	19.6
Dun Laoghaire Rathdown	723	362	361	14.0
Kildare	885	452	433	16.7
Kilkenny	361	188	173	15.0
Laois	340	192	148	16.7
Longford	165	76	89	16.7
Louth	411	198	213	13.3
Meath	768	405	363	16.5
Offaly	302	146	156	15.7
Westmeath	371	174	197	17.2
Wexford	561	292	269	15.3
Wicklow	578	308	270	16.8
<b>MUNSTER</b>	<b>4,561</b>	<b>2,323</b>	<b>2,238</b>	<b>14.6</b>
Clare	447	208	239	15.3
Cork City	331	169	162	11.3
Cork County	1,627	824	803	16.1
Kerry	512	261	251	14.2
Limerick City	209	107	102	14.8
Limerick County	478	262	216	14.3
North Tipperary	249	126	123	14.0
South Tipperary	289	156	133	13.0
Waterford City	213	106	107	18.3
Waterford County	206	104	102	12.2
<b>CONNACHT</b>	<b>2,019</b>	<b>1,078</b>	<b>941</b>	<b>15.0</b>
Galway City	288	150	138	16.0
Galway County	663	354	309	15.1
Leitrim	113	64	49	14.1
Mayo	473	245	228	14.5
Roscommon	225	114	111	14.0
Sligo	257	151	106	15.8
<b>ULSTER (PART OF)</b>	<b>1,088</b>	<b>585</b>	<b>503</b>	<b>14.7</b>
Cavan	318	162	156	17.3
Donegal	520	289	231	12.9
Monaghan	250	134	116	16.3
<b>REGIONAL AUTHORITIES:</b>				
Border	1,869	998	871	14.5
Midland	1,178	588	590	16.6
West	1,649	863	786	14.9
Dublin	5,336	2,701	2,635	16.9
Mid-East	2,231	1,165	1,066	16.7
Mid-West	1,383	703	680	14.6
South-East	1,842	964	878	14.7
South-West	2,470	1,254	1,216	14.9

<sup>1</sup> Births per year per 1,000 population. Annual rates based on estimated usual residence 2012 population.

**Table 6 Births registered, classified by age of mother and previous number of liveborn children, April - June 2012**

Age of mother at maternity	Total	Previous number of liveborn children						
		0	1	2	3	4	5 or more	Not stated
<b>All ages</b>	<b>17,958</b>	<b>6,718</b>	<b>6,454</b>	<b>3,080</b>	<b>1,084</b>	<b>360</b>	<b>212</b>	<b>50</b>
15 and under	11	11	-	-	-	-	-	-
16	20	20	-	-	-	-	-	-
17	51	47	4	-	-	-	-	-
18	117	95	20	2	-	-	-	-
19	189	149	36	3	1	-	-	-
<b>Under 20</b>	<b>388</b>	<b>322</b>	<b>60</b>	<b>5</b>	<b>1</b>	<b>-</b>	<b>-</b>	<b>-</b>
20	262	197	57	7	1	-	-	-
21	299	204	73	18	3	1	-	-
22	360	216	104	34	5	-	-	1
23	391	218	126	44	2	-	1	-
24	477	233	174	48	18	2	-	2
<b>20-24</b>	<b>1,789</b>	<b>1,068</b>	<b>534</b>	<b>151</b>	<b>29</b>	<b>3</b>	<b>1</b>	<b>3</b>
25	554	268	194	65	18	4	2	3
26	637	289	242	68	27	7	3	1
27	764	357	289	86	21	6	4	1
28	866	416	296	120	26	5	3	-
29	1,090	455	423	131	50	19	10	2
<b>25-29</b>	<b>3,911</b>	<b>1,785</b>	<b>1,444</b>	<b>470</b>	<b>142</b>	<b>41</b>	<b>22</b>	<b>7</b>
30	1,147	499	406	170	48	12	8	4
31	1,312	551	475	183	74	16	11	2
32	1,403	511	576	207	65	28	10	6
33	1,356	444	557	246	62	29	13	5
34	1,219	367	471	249	88	27	14	3
<b>30-34</b>	<b>6,437</b>	<b>2,372</b>	<b>2,485</b>	<b>1,055</b>	<b>337</b>	<b>112</b>	<b>56</b>	<b>20</b>
35	1,152	286	472	271	71	32	16	4
36	1,108	238	410	278	118	39	20	5
37	889	174	322	264	90	24	13	2
38	724	148	232	206	85	30	22	1
39	555	113	177	144	78	22	18	3
<b>35-39</b>	<b>4,428</b>	<b>959</b>	<b>1,613</b>	<b>1,163</b>	<b>442</b>	<b>147</b>	<b>89</b>	<b>15</b>
40	392	77	125	102	58	17	11	2
41	266	58	82	68	33	15	8	2
42	152	24	45	38	21	12	11	1
43	93	20	32	18	11	6	6	-
44	45	14	16	4	6	2	3	-
<b>40-44</b>	<b>948</b>	<b>193</b>	<b>300</b>	<b>230</b>	<b>129</b>	<b>52</b>	<b>39</b>	<b>5</b>
<b>45 and over</b>	<b>52</b>	<b>15</b>	<b>17</b>	<b>6</b>	<b>4</b>	<b>5</b>	<b>5</b>	<b>-</b>
Age not stated	5	4	1	-	-	-	-	-

**Table 7 Number and percentage of births registered within and outside marriage/civil partnership, classified by age of mother, April - June 2012**

Age of mother at maternity	Total	Married/Civil partnership parents	Unmarried /non Civil partnership parents		Married/Civil partnership parents	Unmarried /non Civil partnership parents	
			Total	Same address		Total	Same address
	Number				Percentage		
<b>All ages</b>	<b>17,958</b>	<b>11,794</b>	<b>6,164</b>	<b>3,449</b>	<b>66</b>	<b>34</b>	<b>19</b>
15 and under	11	-	11	-	-	100	-
16	20	-	20	2	-	100	10
17	51	6	45	7	12	88	14
18	117	7	110	24	6	94	21
19	189	22	167	44	12	88	23
<b>Under 20</b>	<b>388</b>	<b>35</b>	<b>353</b>	<b>77</b>	<b>9</b>	<b>91</b>	<b>20</b>
20	262	35	227	73	13	87	28
21	299	47	252	77	16	84	26
22	360	53	307	118	15	85	33
23	391	84	307	141	21	79	36
24	477	140	337	167	29	71	35
<b>20-24</b>	<b>1,789</b>	<b>359</b>	<b>1,430</b>	<b>576</b>	<b>20</b>	<b>80</b>	<b>32</b>
25	554	188	366	205	34	66	37
26	637	277	360	190	43	57	30
27	764	375	389	251	49	51	33
28	866	493	373	248	57	43	29
29	1,090	720	370	247	66	34	23
<b>25-29</b>	<b>3,911</b>	<b>2,053</b>	<b>1,858</b>	<b>1,141</b>	<b>52</b>	<b>48</b>	<b>29</b>
30	1,147	811	336	218	71	29	19
31	1,312	971	341	225	74	26	17
32	1,403	1,094	309	197	78	22	14
33	1,356	1,095	261	168	81	19	12
34	1,219	989	230	155	81	19	13
<b>30-34</b>	<b>6,437</b>	<b>4,960</b>	<b>1,477</b>	<b>963</b>	<b>77</b>	<b>23</b>	<b>15</b>
35	1,152	950	202	140	82	18	12
36	1,108	901	207	131	81	19	12
37	889	744	145	100	84	16	11
38	724	597	127	79	82	18	11
39	555	417	138	96	75	25	17
<b>35-39</b>	<b>4,428</b>	<b>3,609</b>	<b>819</b>	<b>546</b>	<b>82</b>	<b>18</b>	<b>12</b>
40	392	326	66	47	83	17	12
41	266	195	71	42	73	27	16
42	152	110	42	27	72	28	18
43	93	76	17	13	82	18	14
44	45	33	12	7	73	27	16
<b>40-44</b>	<b>948</b>	<b>740</b>	<b>208</b>	<b>136</b>	<b>78</b>	<b>22</b>	<b>14</b>
<b>45 and over</b>	<b>52</b>	<b>34</b>	<b>18</b>	<b>9</b>	<b>65</b>	<b>35</b>	<b>17</b>
Age not stated	5	4	1	1	80	20	20

**Table 8 Number and percentage of births registered within and outside marriage/civil partnership classified by area of residence of mother, April - June 2012**

Area of residence	Total	Married/Civil partnership parents	Unmarried /non Civil partnership parents		Married/Civil partnership parents	Unmarried /non Civil partnership parents	
			Total	Same address		Total	Same address
	Number				Percentage		
<b>STATE</b>	<b>17,958</b>	<b>11,794</b>	<b>6,164</b>	<b>3,449</b>	<b>66</b>	<b>34</b>	<b>19</b>
<b>LEINSTER</b>	<b>10,290</b>	<b>6,584</b>	<b>3,706</b>	<b>2,024</b>	<b>64</b>	<b>36</b>	<b>20</b>
Carlow	212	131	81	50	62	38	24
Dublin City	2,016	1,145	871	384	57	43	19
South Dublin	1,246	727	519	252	58	42	20
Fingal	1,351	922	429	242	68	32	18
Dun Laoghaire Rathdown	723	545	178	102	75	25	14
Kildare	885	599	286	196	68	32	22
Kilkenny	361	250	111	66	69	31	18
Laois	340	222	118	68	65	35	20
Longford	165	110	55	32	67	33	19
Louth	411	239	172	91	58	42	22
Meath	768	545	223	149	71	29	19
Offaly	302	191	111	66	63	37	22
Westmeath	371	256	115	67	69	31	18
Wexford	561	322	239	136	57	43	24
Wicklow	578	380	198	123	66	34	21
<b>MUNSTER</b>	<b>4,561</b>	<b>3,013</b>	<b>1,548</b>	<b>883</b>	<b>66</b>	<b>34</b>	<b>19</b>
Clare	447	292	155	95	65	35	21
Cork City	331	168	163	74	51	49	22
Cork County	1,627	1,207	420	269	74	26	17
Kerry	512	344	168	95	67	33	19
Limerick City	209	87	122	50	42	58	24
Limerick County	478	339	139	89	71	29	19
North Tipperary	249	161	88	66	65	35	27
South Tipperary	289	180	109	57	62	38	20
Waterford City	213	103	110	51	48	52	24
Waterford County	206	132	74	37	64	36	18
<b>CONNACHT</b>	<b>2,019</b>	<b>1,460</b>	<b>559</b>	<b>368</b>	<b>72</b>	<b>28</b>	<b>18</b>
Galway City	288	200	88	63	69	31	22
Galway County	663	508	155	112	77	23	17
Leitrim	113	80	33	23	71	29	20
Mayo	473	329	144	92	70	30	19
Roscommon	225	163	62	37	72	28	16
Sligo	257	180	77	41	70	30	16
<b>ULSTER (PART OF)</b>	<b>1,088</b>	<b>737</b>	<b>351</b>	<b>174</b>	<b>68</b>	<b>32</b>	<b>16</b>
Cavan	318	220	98	48	69	31	15
Donegal	520	346	174	87	67	33	17
Monaghan	250	171	79	39	68	32	16
<b>REGIONAL AUTHORITIES:</b>							
Border	1,869	1,236	633	329	66	34	18
Midland	1,178	779	399	233	66	34	20
West	1,649	1,200	449	304	73	27	18
Dublin	5,336	3,339	1,997	980	63	37	18
Mid-East	2,231	1,524	707	468	68	32	21
Mid-West	1,383	879	504	300	64	36	22
South-East	1,842	1,118	724	397	61	39	22
South-West	2,470	1,719	751	438	70	30	18

**Table 9 Births registered, classified by area of residence and age of mother, April - June 2012**

Area of residence	Total	Under 20	20-24	25-29	30-34	35-39	40 and over	Age not stated	Average age of mother at maternity	
									Total	First
<b>STATE</b>	<b>17,958</b>	<b>388</b>	<b>1,789</b>	<b>3,911</b>	<b>6,437</b>	<b>4,428</b>	<b>1,000</b>	<b>5</b>	<b>31.9</b>	<b>29.9</b>
<b>LEINSTER</b>	<b>10,290</b>	<b>248</b>	<b>1,057</b>	<b>2,251</b>	<b>3,717</b>	<b>2,454</b>	<b>561</b>	<b>2</b>	<b>31.8</b>	<b>29.9</b>
Carlow	212	7	35	48	66	48	8	-	30.7	28.1
Dublin City	2,016	58	254	441	683	456	123	1	31.5	30.0
South Dublin	1,246	29	153	302	452	246	64	-	31.1	29.1
Fingal	1,351	27	110	294	508	345	67	-	32.1	30.6
Dun Laoghaire Rathdown	723	9	33	100	286	229	66	-	33.7	31.8
Kildare	885	13	80	198	329	223	41	1	32.1	30.3
Kilkenny	361	4	28	77	139	91	22	-	32.4	30.1
Laois	340	11	33	74	139	67	16	-	31.4	30.0
Longford	165	3	23	43	54	35	7	-	31.2	28.9
Louth	411	13	60	95	143	86	14	-	30.7	28.2
Meath	768	11	69	166	291	195	36	-	32.1	30.0
Offaly	302	14	35	67	100	71	15	-	31.2	28.8
Westmeath	371	14	37	92	141	71	16	-	31.1	28.8
Wexford	561	26	59	142	178	126	30	-	31.1	28.8
Wicklow	578	9	48	112	208	165	36	-	32.5	30.1
<b>MUNSTER</b>	<b>4,561</b>	<b>88</b>	<b>441</b>	<b>990</b>	<b>1,569</b>	<b>1,208</b>	<b>265</b>	<b>-</b>	<b>32.1</b>	<b>30.0</b>
Clare	447	13	47	96	131	122	38	-	32.0	29.8
Cork City	331	13	47	85	112	63	11	-	30.5	28.9
Cork County	1,627	14	131	299	588	495	100	-	32.8	30.9
Kerry	512	7	48	110	162	140	45	-	32.7	30.8
Limerick City	209	9	49	56	62	25	8	-	29.2	27.1
Limerick County	478	4	38	99	188	123	26	-	32.5	30.8
North Tipperary	249	7	22	63	78	67	12	-	31.9	29.4
South Tipperary	289	14	22	75	97	72	9	-	31.4	28.4
Waterford City	213	6	28	59	76	39	5	-	30.6	28.2
Waterford County	206	1	9	48	75	62	11	-	32.8	30.7
<b>CONNACHT</b>	<b>2,019</b>	<b>31</b>	<b>166</b>	<b>419</b>	<b>752</b>	<b>537</b>	<b>111</b>	<b>3</b>	<b>32.3</b>	<b>30.2</b>
Galway City	288	7	34	64	102	67	13	1	31.4	30.1
Galway County	663	4	42	120	260	202	34	1	32.9	31.0
Leitrim	113	1	12	20	42	32	6	-	32.4	29.9
Mayo	473	9	45	96	174	122	27	-	32.0	29.8
Roscommon	225	7	17	52	81	55	13	-	32.0	29.4
Sligo	257	3	16	67	93	59	18	1	32.1	29.5
<b>ULSTER (PART OF)</b>	<b>1,088</b>	<b>21</b>	<b>125</b>	<b>251</b>	<b>399</b>	<b>229</b>	<b>63</b>	<b>-</b>	<b>31.5</b>	<b>28.8</b>
Cavan	318	7	37	74	122	63	15	-	31.2	28.5
Donegal	520	11	61	111	186	119	32	-	31.6	28.9
Monaghan	250	3	27	66	91	47	16	-	31.5	29.1
<b>REGIONAL AUTHORITIES:</b>										
Border	1,869	38	213	433	677	406	101	1	31.4	28.8
Midland	1,178	42	128	276	434	244	54	-	31.2	29.1
West	1,649	27	138	332	617	446	87	2	32.3	30.3
Dublin	5,336	123	550	1,137	1,929	1,276	320	1	31.9	30.2
Mid-East	2,231	33	197	476	828	583	113	1	32.2	30.1
Mid-West	1,383	33	156	314	459	337	84	-	31.7	29.6
South-East	1,842	58	181	449	631	438	85	-	31.5	29.0
South-West	2,470	34	226	494	862	698	156	-	32.5	30.6



**Table 10 Births registered outside marriage/civil partnership, classified by area of residence and age of mother, April - June 2012**

Area of residence	Total	Under 25	25-29	30-34	35-39	40 and over	Age not stated	Average age of mother at maternity	
								Total	First
<b>STATE</b>	<b>6,164</b>	<b>1,783</b>	<b>1,858</b>	<b>1,477</b>	<b>819</b>	<b>226</b>	<b>1</b>	<b>28.9</b>	<b>27.1</b>
<b>LEINSTER</b>	<b>3,706</b>	<b>1,065</b>	<b>1,107</b>	<b>892</b>	<b>503</b>	<b>139</b>	<b>-</b>	<b>28.9</b>	<b>27.3</b>
Carlow	81	37	22	12	8	2	-	26.7	25.0
Dublin City	871	251	238	210	135	37	-	29.2	27.9
South Dublin	519	148	169	131	54	17	-	28.4	26.9
Fingal	429	111	124	110	65	19	-	29.5	28.4
Dun Laoghaire Rathdown	178	31	43	57	35	12	-	31.1	29.8
Kildare	286	77	95	68	38	8	-	28.9	27.5
Kilkenny	111	28	36	27	14	6	-	29.6	27.1
Laois	118	40	35	28	12	3	-	27.9	26.7
Longford	55	20	19	9	6	1	-	27.6	25.7
Louth	172	65	45	37	21	4	-	27.8	25.2
Meath	223	59	79	52	27	6	-	28.9	26.7
Offaly	111	40	33	24	12	2	-	27.8	25.6
Westmeath	115	40	36	21	13	5	-	27.9	26.0
Wexford	239	71	77	51	32	8	-	28.4	26.0
Wicklow	198	47	56	55	31	9	-	29.8	28.3
<b>MUNSTER</b>	<b>1,548</b>	<b>448</b>	<b>471</b>	<b>373</b>	<b>202</b>	<b>54</b>	<b>-</b>	<b>28.8</b>	<b>27.0</b>
Clare	155	52	48	31	17	7	-	28.1	26.6
Cork City	163	53	53	38	16	3	-	27.9	26.6
Cork County	420	120	113	104	63	20	-	29.4	27.9
Kerry	168	46	51	35	26	10	-	29.5	27.4
Limerick City	122	48	33	30	9	2	-	27.3	26.0
Limerick County	139	34	39	44	20	2	-	29.4	27.5
North Tipperary	88	25	34	15	10	4	-	28.7	25.8
South Tipperary	109	31	42	24	9	3	-	27.7	25.1
Waterford City	110	30	31	31	17	1	-	29.0	26.0
Waterford County	74	9	27	21	15	2	-	30.5	29.0
<b>CONNACHT</b>	<b>559</b>	<b>146</b>	<b>175</b>	<b>140</b>	<b>82</b>	<b>15</b>	<b>1</b>	<b>29.1</b>	<b>27.2</b>
Galway City	88	21	25	25	16	1	-	29.6	27.8
Galway County	155	37	47	37	27	6	1	29.7	27.9
Leitrim	33	12	9	9	2	1	-	28.0	26.6
Mayo	144	42	42	38	17	5	-	28.7	27.1
Roscommon	62	16	23	13	9	1	-	28.5	25.9
Sligo	77	18	29	18	11	1	-	28.7	26.9
<b>ULSTER (PART OF)</b>	<b>351</b>	<b>124</b>	<b>105</b>	<b>72</b>	<b>32</b>	<b>18</b>	<b>-</b>	<b>28.1</b>	<b>25.3</b>
Cavan	98	36	27	23	10	2	-	27.8	24.3
Donegal	174	62	51	31	20	10	-	28.2	25.4
Monaghan	79	26	27	18	2	6	-	28.2	26.4
<b>REGIONAL AUTHORITIES:</b>									
Border	633	219	188	136	66	24	-	28.1	25.6
Midland	399	140	123	82	43	11	-	27.8	26.0
West	449	116	137	113	69	13	1	29.2	27.3
Dublin	1,997	541	574	508	289	85	-	29.3	28.0
Mid-East	707	183	230	175	96	23	-	29.2	27.5
Mid-West	504	159	154	120	56	15	-	28.4	26.6
South-East	724	206	235	166	95	22	-	28.6	26.2
South-West	751	219	217	177	105	33	-	29.1	27.5

**Table 11 Births registered, classified by nationality of mother, marital status and age, April - June 2012**

Nationality of mother	Total births	% of total births	% of births outside marriage/civil partnership	Average age
<b>TOTAL</b>	<b>17,958</b>	<b>100.0</b>	<b>34.3</b>	<b>31.9</b>
Ireland	13,546	75.4	35.0	32.3
United Kingdom	386	2.1	47.2	32.1
EU15 excl. Irl & UK	258	1.4	39.9	33.6
Accession states (EU27 excl. EU15)	2,024	11.3	36.7	29.5
Other	1,534	8.5	20.6	31.3
Not stated	210	1.2	40.5	31.8

**Table 12 Deaths registered by county of residence of deceased, April - June 2012**

Area of residence	Total	Male	Female	Rate <sup>1</sup>
<b>STATE</b>	<b>7,080</b>	<b>3,586</b>	<b>3,494</b>	<b>6.2</b>
<b>LEINSTER</b>	<b>3,489</b>	<b>1,724</b>	<b>1,765</b>	<b>5.6</b>
Carlow	99	54	45	7.2
Dublin City	921	450	471	7.1
South Dublin	365	180	185	5.5
Fingal	252	123	129	3.7
Dun Laoghaire Rathdown	232	124	108	4.5
Kildare	158	80	78	3.0
Kilkenny	125	68	57	5.2
Laois	70	38	32	3.4
Longford	180	95	85	18.2
Louth	177	90	87	5.7
Meath	107	51	56	2.3
Offaly	210	90	120	10.9
Westmeath	158	65	93	7.3
Wexford	229	123	106	6.3
Wicklow	206	93	113	6.0
<b>MUNSTER</b>	<b>2,112</b>	<b>1,091</b>	<b>1,021</b>	<b>6.8</b>
Clare	187	105	82	6.4
Cork City	291	148	143	9.9
Cork County	517	277	240	5.1
Kerry	302	167	135	8.4
Limerick City	122	54	68	8.7
Limerick County	202	93	109	6.0
North Tipperary	137	65	72	7.7
South Tipperary	169	87	82	7.6
Waterford City	67	33	34	5.8
Waterford County	118	62	56	7.0
<b>CONNACHT</b>	<b>957</b>	<b>503</b>	<b>454</b>	<b>7.1</b>
Galway City	57	32	25	3.2
Galway County	337	177	160	7.7
Leitrim	54	34	20	6.7
Mayo	301	158	143	9.2
Roscommon	100	49	51	6.2
Sligo	108	53	55	6.6
<b>ULSTER (PART OF)</b>	<b>522</b>	<b>268</b>	<b>254</b>	<b>7.1</b>
Cavan	130	67	63	7.1
Donegal	281	154	127	7.0
Monaghan	111	47	64	7.3
<b>REGIONAL AUTHORITIES:</b>				
Border	864	450	414	6.7
Midland	460	222	238	6.5
West	795	416	379	7.2
Dublin	1,748	843	905	5.5
Mid-East	615	307	308	4.6
Mid-West	648	317	331	6.8
South-East	840	439	401	6.7
South-West	1,110	592	518	6.7

<sup>1</sup> Deaths per year per 1,000 population. Annual rates based on estimated 2012 Usual Residence population.

**Table 13 Deaths registered by cause of death and county of residence of deceased,  
April - June 2012**

Area of residence	Total deaths	Malignant Neoplasms	Diseases of the Circulatory system	Diseases of the Respiratory system	External causes	All other causes
<b>STATE</b>	<b>7,080</b>	<b>2,037</b>	<b>2,314</b>	<b>892</b>	<b>384</b>	<b>1,453</b>
<b>LEINSTER</b>	<b>3,489</b>	<b>1,045</b>	<b>1,096</b>	<b>433</b>	<b>172</b>	<b>743</b>
Carlow	99	27	34	14	8	16
Dublin City	921	280	274	116	55	196
South Dublin	365	111	118	46	8	82
Fingal	252	87	65	26	10	64
Dun Laoghaire Rathdown	232	71	75	26	13	47
Kildare	158	44	49	25	8	32
Kilkenny	125	36	45	15	5	24
Laois	70	20	19	14	3	14
Longford	180	53	52	22	11	42
Louth	177	48	64	21	10	34
Meath	107	33	32	16	7	19
Offaly	210	66	68	20	11	45
Westmeath	158	41	66	17	5	29
Wexford	229	68	66	22	12	61
Wicklow	206	60	69	33	6	38
<b>MUNSTER</b>	<b>2,112</b>	<b>617</b>	<b>694</b>	<b>247</b>	<b>146</b>	<b>408</b>
Clare	187	48	72	15	9	43
Cork City	291	95	87	33	22	54
Cork County	517	147	189	50	35	96
Kerry	302	85	93	45	29	50
Limerick City	122	34	36	17	10	25
Limerick County	202	64	50	37	11	40
North Tipperary	137	37	57	12	8	23
South Tipperary	169	60	50	19	11	29
Waterford City	67	19	19	9	5	15
Waterford County	118	28	41	10	6	33
<b>CONNACHT</b>	<b>957</b>	<b>239</b>	<b>348</b>	<b>145</b>	<b>43</b>	<b>182</b>
Galway City	57	17	20	4	3	13
Galway County	337	88	116	49	15	69
Leitrim	54	13	20	7	4	10
Mayo	301	73	115	48	15	50
Roscommon	100	18	40	21	3	18
Sligo	108	30	37	16	3	22
<b>ULSTER (PART OF)</b>	<b>522</b>	<b>136</b>	<b>176</b>	<b>67</b>	<b>23</b>	<b>120</b>
Cavan	130	32	46	13	8	31
Donegal	281	78	94	41	10	58
Monaghan	111	26	36	13	5	31
<b>REGIONAL AUTHORITIES:</b>						
Border	864	232	285	112	41	194
Midland	460	130	162	62	20	86
West	795	196	291	122	36	150
Dublin	1,748	544	525	208	84	387
Mid-East	615	179	208	80	29	119
Mid-West	648	183	215	81	38	131
South-East	840	246	259	99	50	186
South-West	1,110	327	369	128	86	200

**Table 14 Deaths registered classified by cause and age group, April - June 2012**

Cause of Death	65 COD Code	ICD-10 Code	Total Deaths	Age Group										
				Under 1	1-4	5-14	15-24	25-34	35-44	45-54	55-64	65-74	75-84	85 and over
<b>Total deaths</b>	<b>0</b>	<b>A00-Y89</b>	<b>7,080</b>	<b>47</b>	<b>16</b>	<b>16</b>	<b>53</b>	<b>95</b>	<b>195</b>	<b>322</b>	<b>707</b>	<b>1,187</b>	<b>2,107</b>	<b>2,335</b>
<b>Infectious and parasitic diseases:-</b>	<b>1</b>	<b>A00-B99</b>	<b>75</b>	<b>1</b>	<b>2</b>	<b>1</b>	<b>0</b>	<b>0</b>	<b>3</b>	<b>3</b>	<b>4</b>	<b>11</b>	<b>28</b>	<b>22</b>
Tuberculosis	2	A15-A19,B90	10	0	0	0	0	0	0	0	2	1	5	2
Meningococcal infection	3	A39	0	0	0	0	0	0	0	0	0	0	0	0
AIDS (HIV Disease)	4	B20-B24	3	0	0	0	0	0	3	0	0	0	0	0
Viral Hepatitis	5	B15-B19	3	0	0	0	0	0	0	2	0	1	0	0
Other infectious and parasitic diseases			59	1	2	1	0	0	0	1	2	9	23	20
<b>Neoplasms</b>	<b>6</b>	<b>C00-D48</b>	<b>2,100</b>	<b>1</b>	<b>5</b>	<b>5</b>	<b>6</b>	<b>18</b>	<b>51</b>	<b>128</b>	<b>356</b>	<b>546</b>	<b>646</b>	<b>338</b>
<b>Malignant Neoplasms of the:-</b>	<b>7</b>	<b>C00-C97</b>	<b>2,037</b>	<b>1</b>	<b>5</b>	<b>4</b>	<b>6</b>	<b>18</b>	<b>51</b>	<b>127</b>	<b>349</b>	<b>532</b>	<b>627</b>	<b>317</b>
Lip, oral cavity, pharynx	8	C00-C14	38	0	0	0	0	0	1	5	11	9	9	3
Oesophagus	9	C15	108	0	0	0	1	1	2	2	29	28	27	18
Stomach	10	C16	69	0	0	0	0	0	4	4	7	21	24	9
Colon	11	C18	136	0	0	0	0	0	1	4	20	36	45	30
Rectum and anus	12	C19-C21	100	0	0	0	0	0	2	5	19	34	30	10
Liver and the intrahepatic bile ducts	13	C22	57	0	0	0	0	2	2	4	11	10	20	8
Pancreas	14	C25	111	0	0	0	0	1	1	8	17	33	41	10
Larynx and trachea/bronchus /lung	15	C32-C34	447	0	0	0	1	1	0	17	87	148	145	48
Skin	16	C43	36	0	0	0	0	2	1	6	3	9	9	6
Breast	17	C50	164	0	0	0	0	0	11	20	32	27	38	36
Cervix uteri	18	C53	28	0	0	0	0	3	4	6	9	2	4	0
Other parts of uterus	19	C54-C55	27	0	0	0	0	0	0	1	5	7	10	4
Ovary	20	C56	68	0	0	0	0	0	1	7	14	16	22	8
Prostate	21	C61	106	0	0	0	0	0	0	1	10	22	41	32
Kidney	22	C64	42	0	0	0	1	0	1	4	5	13	13	5
Bladder	23	C67	45	0	0	0	0	0	0	0	3	13	17	11
Lymph/haematopoietic tissue	24	C81-C96	182	0	2	1	1	0	8	10	26	47	65	22
Other malignant neoplasms			273	1	3	3	1	8	12	23	41	57	67	57
<b>Diseases of the blood and blood-forming organs, immunological disorders</b>	<b>25</b>	<b>D50-D89</b>	<b>25</b>	<b>0</b>	<b>0</b>	<b>1</b>	<b>0</b>	<b>1</b>	<b>0</b>	<b>2</b>	<b>3</b>	<b>3</b>	<b>4</b>	<b>11</b>
<b>Endocrine, Nutritional and metabolic diseases</b>	<b>26</b>	<b>E00-E90</b>	<b>187</b>	<b>0</b>	<b>0</b>	<b>2</b>	<b>3</b>	<b>1</b>	<b>7</b>	<b>5</b>	<b>13</b>	<b>31</b>	<b>70</b>	<b>55</b>
Diabetes mellitus	27	E10-E14	143	0	0	0	0	0	3	4	8	28	53	47
<b>Mental and behavioural disorders</b>	<b>28</b>	<b>F00-F99</b>	<b>238</b>	<b>0</b>	<b>0</b>	<b>0</b>	<b>0</b>	<b>0</b>	<b>1</b>	<b>2</b>	<b>3</b>	<b>10</b>	<b>61</b>	<b>161</b>
Alcohol abuse (including alcoholic psychosis)	29	F10	0	0	0	0	0	0	0	0	0	0	0	0
Drug dependence, toxicomania	30	F11-F16,F18-F19	0	0	0	0	0	0	0	0	0	0	0	0
<b>Diseases of the nervous system and the sense organs</b>	<b>31</b>	<b>G00-H95</b>	<b>322</b>	<b>0</b>	<b>2</b>	<b>1</b>	<b>0</b>	<b>3</b>	<b>6</b>	<b>9</b>	<b>26</b>	<b>44</b>	<b>110</b>	<b>121</b>
Meningitis	32	G00-G03	2	0	0	0	0	0	0	1	0	1	0	0
<b>Diseases of the Circulatory System:-</b>	<b>33</b>	<b>I00-I99</b>	<b>2,314</b>	<b>0</b>	<b>0</b>	<b>0</b>	<b>4</b>	<b>6</b>	<b>31</b>	<b>80</b>	<b>170</b>	<b>339</b>	<b>701</b>	<b>983</b>
Ischaemic heart disease	34	I20-I25	1,163	0	0	0	0	1	12	45	113	201	345	446
of which: (Acute myocardial infarction)		I21	584	0	0	0	0	1	5	14	43	104	184	233
Other heart disease	35	I30-I33,I39-I52	323	0	0	0	0	2	3	11	14	35	72	186
Cerebrovascular disease	36	I60-I69	494	0	0	0	1	1	9	19	20	54	173	217
Other diseases of circulatory system			334	0	0	0	3	2	7	5	23	49	111	134

<b>Diseases of the Respiratory system</b>	<b>37</b>	<b>J00-J99</b>	<b>892</b>	<b>0</b>	<b>1</b>	<b>2</b>	<b>0</b>	<b>0</b>	<b>0</b>	<b>0</b>	<b>13</b>	<b>38</b>	<b>100</b>	<b>316</b>	<b>422</b>
Influenza	38	J10-J11	4	0	0	0	0	0	0	0	0	0	0	2	2
Pneumonia	39	J12-J19	296	0	1	0	0	0	0	4	12	12	17	77	185
Chronic Lower respiratory disease of which: Asthma	40	J40-J47	388	0	0	2	0	0	0	4	15	15	51	167	149
Other diseases of the respiratory system	41	J45-J46	15	0	0	2	0	0	0	1	2	2	1	2	7
<b>Diseases of the Digestive system</b>	<b>42</b>	<b>K00-K93</b>	<b>204</b>	<b>0</b>	<b>0</b>	<b>0</b>	<b>0</b>	<b>0</b>	<b>0</b>	<b>5</b>	<b>11</b>	<b>11</b>	<b>32</b>	<b>70</b>	<b>86</b>
Ulcer of stomach, duodenum and jejunum	43	K25-K28	17	0	0	0	0	0	0	2	3	3	5	2	5
Chronic liver disease	44	K70,K73-K74	61	0	0	0	0	2	10	8	21	21	11	7	2
Other diseases of the digestive system			163	0	0	0	1	1	7	8	11	11	23	60	52
<b>Diseases of the skin and subcutaneous tissue</b>	<b>45</b>	<b>L00-L99</b>	<b>11</b>	<b>0</b>	<b>0</b>	<b>0</b>	<b>0</b>	<b>0</b>	<b>0</b>	<b>3</b>	<b>0</b>	<b>0</b>	<b>2</b>	<b>2</b>	<b>4</b>
<b>Diseases of the musculoskeletal system/connective tissue</b>	<b>46</b>	<b>M00-M99</b>	<b>56</b>	<b>0</b>	<b>0</b>	<b>1</b>	<b>2</b>	<b>0</b>	<b>2</b>	<b>0</b>	<b>5</b>	<b>5</b>	<b>4</b>	<b>16</b>	<b>26</b>
Rheumatoid arthritis and osteoarthritis	47	M05-M06,M15-M19	13	0	0	0	0	0	0	0	2	2	1	5	5
<b>Diseases of the genitourinary system</b>	<b>48</b>	<b>N00-N99</b>	<b>152</b>	<b>0</b>	<b>0</b>	<b>0</b>	<b>0</b>	<b>0</b>	<b>3</b>	<b>1</b>	<b>3</b>	<b>3</b>	<b>15</b>	<b>49</b>	<b>81</b>
Diseases of the kidney and ureter	49	N00-N29	105	0	0	0	0	0	3	1	3	3	8	40	50
<b>Complications of pregnancy, childbirth and puerperium</b>	<b>50</b>	<b>O00-O99</b>	<b>0</b>	<b>0</b>	<b>0</b>	<b>0</b>	<b>0</b>	<b>0</b>	<b>0</b>	<b>0</b>	<b>0</b>	<b>0</b>	<b>0</b>	<b>0</b>	<b>0</b>
<b>Certain conditions originating in the perinatal period<sup>1</sup></b>	<b>51</b>	<b>P00-P96</b>	<b>17</b>	<b>17</b>	<b>0</b>	<b>0</b>	<b>0</b>	<b>0</b>	<b>0</b>	<b>0</b>	<b>0</b>	<b>0</b>	<b>0</b>	<b>0</b>	<b>0</b>
<b>Congenital malformations and chromosomal abnormalities</b>	<b>52</b>	<b>Q00-Q99</b>	<b>48</b>	<b>24</b>	<b>2</b>	<b>1</b>	<b>1</b>	<b>1</b>	<b>3</b>	<b>4</b>	<b>5</b>	<b>4</b>	<b>4</b>	<b>2</b>	<b>1</b>
Congenital malformations of the:-															
Nervous system	53	Q00-Q07	9	6	1	1	0	1	0	0	0	0	0	0	0
Circulatory system	54	Q20-Q28	5	3	1	0	0	0	1	0	0	0	0	0	0
<b>Symptoms, signs, abnormal findings, ill-defined causes</b>	<b>55</b>	<b>R00-R99</b>	<b>18</b>	<b>4</b>	<b>0</b>	<b>0</b>	<b>1</b>	<b>2</b>	<b>0</b>	<b>1</b>	<b>3</b>	<b>3</b>	<b>1</b>	<b>2</b>	<b>4</b>
Sudden infant death syndrome	56	R95	4	4	0	0	0	0	0	0	0	0	0	0	0
Unknown and unspecified causes	57	R96-R99	9	0	0	0	1	2	0	1	3	3	0	2	0
<b>External causes of injury and poisoning</b>	<b>58</b>	<b>V01-Y89</b>	<b>384</b>	<b>0</b>	<b>4</b>	<b>2</b>	<b>35</b>	<b>60</b>	<b>71</b>	<b>53</b>	<b>43</b>	<b>43</b>	<b>38</b>	<b>31</b>	<b>47</b>
Accidents	59	V01-X59	229	0	4	1	17	28	37	34	18	18	23	24	43
of which: Transport accidents	60	V01-X59	38	0	2	1	5	11	6	3	2	2	3	3	2
Accidental falls	61	W00-W19	52	0	0	0	1	1	5	4	2	2	16	9	14
Accidental poisoning	62	X40-X49	67	0	0	0	7	15	22	16	4	4	1	2	0
other accidents			72	0	2	0	4	1	4	11	10	3	3	10	27
Suicide and intentional self harm	63	X60-X84	118	0	0	1	15	27	30	14	22	22	5	3	1
Homicide/assault	64	X85-Y09	7	0	0	0	1	2	0	3	0	0	1	0	0
Events of undetermined intent	65	Y10-Y34	18	0	0	0	2	2	4	2	2	2	6	0	0
All other external causes			12	0	0	0	0	1	0	0	1	1	3	4	3

<sup>1</sup> Stillbirths not included.

**Table 15 Male deaths registered classified by cause and age group, April - June 2012**

Cause of Death	65 COD Code	ICD-10 Code	Total Males	Age Group										
				Under 1	1-4	5-14	15-24	25-34	35-44	45-54	55-64	65-74	75-84	85 and over
<b>Total Male Deaths</b>	<b>0</b>	<b>A00-Y89</b>	<b>3,586</b>	<b>26</b>	<b>10</b>	<b>9</b>	<b>41</b>	<b>71</b>	<b>118</b>	<b>193</b>	<b>428</b>	<b>736</b>	<b>1,101</b>	<b>853</b>
<b>Infectious and parasitic diseases:-</b>	<b>1</b>	<b>A00-B99</b>	<b>35</b>	<b>1</b>	<b>0</b>	<b>1</b>	<b>0</b>	<b>0</b>	<b>3</b>	<b>1</b>	<b>3</b>	<b>6</b>	<b>10</b>	<b>10</b>
Tuberculosis	2	A15-A19,B90	5	0	0	0	0	0	0	0	1	1	2	1
Meningococcal infection	3	A39	0	0	0	0	0	0	0	0	0	0	0	0
AIDS (HIV Disease)	4	B20-B24	3	0	0	0	0	0	3	0	0	0	0	0
Viral Hepatitis	5	B15-B19	1	0	0	0	0	0	0	1	0	0	0	0
Other infectious and parasitic diseases			26	1	0	1	0	0	0	0	2	5	8	9
<b>Neoplasms</b>	<b>6</b>	<b>C00-D48</b>	<b>1,120</b>	<b>1</b>	<b>4</b>	<b>3</b>	<b>3</b>	<b>10</b>	<b>18</b>	<b>56</b>	<b>193</b>	<b>327</b>	<b>360</b>	<b>145</b>
<b>Malignant Neoplasms of the:-</b>	<b>7</b>	<b>C00-C97</b>	<b>1,083</b>	<b>1</b>	<b>4</b>	<b>2</b>	<b>3</b>	<b>10</b>	<b>18</b>	<b>56</b>	<b>188</b>	<b>318</b>	<b>349</b>	<b>134</b>
Lip, oral cavity, pharynx	8	C00-C14	30	0	0	0	0	0	0	5	11	5	7	2
Oesophagus	9	C15	68	0	0	0	1	1	2	2	23	19	16	4
Stomach	10	C16	43	0	0	0	0	0	3	4	14	14	15	4
Colon	11	C18	74	0	0	0	0	0	0	1	9	23	26	15
Rectum and anus	12	C19-C21	67	0	0	0	0	0	1	4	10	26	20	6
Liver and the intrahepatic bile ducts	13	C22	42	0	0	0	0	2	2	2	10	8	14	4
Pancreas	14	C25	57	0	0	0	0	1	0	5	8	21	18	4
Larynx and trachea/bronchus /lung	15	C32-C34	260	0	0	0	0	1	0	8	49	92	83	27
Skin	16	C43	17	0	0	0	0	1	0	5	0	4	5	2
Breast	17	C50	4	0	0	0	0	0	0	0	1	0	1	2
Cervix uteri	18	C53	0	0	0	0	0	0	0	0	0	0	0	0
Other parts of uterus	19	C54-C55	0	0	0	0	0	0	0	0	0	0	0	0
Ovary	20	C56	0	0	0	0	0	0	0	0	0	0	0	0
Prostate	21	C61	106	0	0	0	0	0	0	1	10	22	41	32
Kidney	22	C64	35	0	0	0	0	0	0	4	5	11	12	3
Bladder	23	C67	30	0	0	0	1	0	0	0	3	11	13	2
Lymph/haematopoietic tissue	24	C81-C96	112	0	1	0	0	0	3	6	16	31	43	12
Other malignant neoplasms			138	1	3	2	1	4	7	10	29	31	35	15
<b>Diseases of the blood and blood-forming organs, immunological disorders</b>	<b>25</b>	<b>D50-D89</b>	<b>6</b>	<b>0</b>	<b>0</b>	<b>0</b>	<b>0</b>	<b>0</b>	<b>0</b>	<b>0</b>	<b>1</b>	<b>2</b>	<b>2</b>	<b>1</b>
<b>Endocrine, Nutritional and metabolic diseases</b>	<b>26</b>	<b>E00-E90</b>	<b>95</b>	<b>0</b>	<b>0</b>	<b>1</b>	<b>3</b>	<b>0</b>	<b>3</b>	<b>1</b>	<b>9</b>	<b>23</b>	<b>40</b>	<b>15</b>
Diabetes mellitus	27	E10-E14	74	0	0	0	0	0	2	1	6	21	31	13
<b>Mental and behavioural disorders</b>	<b>28</b>	<b>F00-F99</b>	<b>83</b>	<b>0</b>	<b>0</b>	<b>0</b>	<b>0</b>	<b>0</b>	<b>0</b>	<b>1</b>	<b>2</b>	<b>6</b>	<b>29</b>	<b>45</b>
Alcohol abuse (including alcoholic psychosis)	29	F10	0	0	0	0	0	0	0	0	0	0	0	0
Drug dependence, toxicomania	30	F11-F16,F18-F19	0	0	0	0	0	0	0	0	0	0	0	0
<b>Diseases of the nervous system and the sense organs</b>	<b>31</b>	<b>G00-H95</b>	<b>143</b>	<b>0</b>	<b>1</b>	<b>1</b>	<b>0</b>	<b>2</b>	<b>2</b>	<b>5</b>	<b>13</b>	<b>21</b>	<b>55</b>	<b>43</b>
Meningitis	32	G00-G03	2	0	0	0	0	0	0	1	0	1	0	0
<b>Diseases of the Circulatory System:-</b>	<b>33</b>	<b>I00-I99</b>	<b>1,131</b>	<b>0</b>	<b>0</b>	<b>0</b>	<b>4</b>	<b>5</b>	<b>23</b>	<b>57</b>	<b>123</b>	<b>228</b>	<b>348</b>	<b>343</b>
Ischaemic heart disease	34	I20-I25	638	0	0	0	0	1	9	38	85	148	178	179
of which: (Acute myocardial infarction)		I21	284	0	0	0	0	1	3	12	29	74	88	77
Other heart disease	35	I30-I33,I39-I52	139	0	0	0	0	2	1	6	11	27	37	55
Cerebrovascular disease	36	I60-I69	202	0	0	0	1	1	7	9	12	25	84	63
Other diseases of circulatory system			152	0	0	0	3	1	6	4	15	28	49	46

<b>Diseases of the Respiratory system</b>	37	<b>J00-J99</b>	447	0	0	0	1	0	0	11	23	63	176	173
Influenza	38	J10-J11	3	0	0	0	0	0	0	0	0	0	1	2
Pneumonia	39	J12-J19	125	0	0	0	0	0	0	3	8	11	35	68
Chronic Lower respiratory disease	40	J40-J47	212	0	0	0	1	0	0	4	9	31	96	71
of which: Asthma	41	J45-J46	6	0	0	0	1	0	0	1	2	0	1	1
Other diseases of the respiratory system			107	0	0	0	0	0	0	4	6	21	44	32
<b>Diseases of the Digestive system</b>	42	<b>K00-K93</b>	111	0	0	0	0	1	2	12	20	20	27	16
Ulcer of stomach, duodenum and jejunum	43	K25-K28	10	0	0	0	0	0	0	2	3	3	1	1
Chronic liver disease	44	K70,K73-K74	36	0	0	0	0	0	2	8	12	7	1	0
Other diseases of the digestive system			65	0	0	0	0	1	0	4	5	10	25	15
<b>Diseases of the skin and subcutaneous tissue</b>	45	<b>L00-L99</b>	6	0	0	0	0	0	0	2	0	1	0	3
<b>Diseases of the musculoskeletal system/connective tissue</b>	46	<b>M00-M99</b>	17	0	0	0	1	1	0	0	1	1	6	7
Rheumatoid arthritis and osteoarthritis	47	M05-M06,M15-M19	3	0	0	0	0	0	0	0	1	1	1	0
<b>Diseases of the genitourinary system</b>	48	<b>N00-N99</b>	69	0	0	0	0	0	0	0	3	9	27	30
Diseases of the kidney and ureter	49	N00-N29	53	0	0	0	0	0	0	0	3	5	23	22
<b>Complications of pregnancy, childbirth and puerperium</b>	50	<b>O00-O99</b>	0	0	0	0	0	0	0	0	0	0	0	0
<b>Certain conditions originating in the perinatal period<sup>1</sup></b>	51	<b>P00-P96</b>	6	6	0	0	0	0	0	0	0	0	0	0
<b>Congenital malformations and chromosomal abnormalities</b>	52	<b>Q00-Q99</b>	29	15	1	1	1	1	1	3	3	1	1	1
Congenital malformations of the:-														
Nervous system	53	Q00-Q07	5	3	0	0	1	0	1	0	0	0	0	0
Circulatory system	54	Q20-Q28	2	1	1	0	0	0	0	0	0	0	0	0
<b>Symptoms, signs,,abnormal findings, ill-defined causes</b>	55	<b>R00-R99</b>	9	3	0	0	0	1	1	0	1	0	0	2
Sudden infant death syndrome	56	R95	3	3	0	0	0	0	0	0	0	0	0	0
Unknown and unspecified causes	57	R96-R99	4	0	0	0	0	1	1	0	1	0	0	0
<b>External causes of injury and poisoning</b>	58	<b>V01-Y89</b>	279	0	4	0	0	27	50	56	33	28	20	19
Accidents	59	V01-X59	155	0	4	0	0	15	25	28	10	16	16	17
of which: Transport accidents	60	V01-X59	26	0	2	0	0	3	10	3	2	1	2	2
Accidental falls	61	W00-W19	32	0	0	0	0	1	0	4	1	12	6	6
Accidental poisoning	62	X40-X49	55	0	0	0	0	7	14	19	2	0	2	0
other accidents			42	0	2	0	0	4	1	2	10	3	6	9
Suicide and intentional self harm	63	X60-X84	96	0	0	0	0	10	21	25	20	4	2	1
Homicide/assault	64	X85-Y09	6	0	0	0	0	0	2	0	0	1	0	0
Events of undetermined intent	65	Y10-Y34	15	0	0	0	0	2	1	3	2	5	0	0
All other external causes			7	0	0	0	0	0	1	0	1	2	2	1

<sup>1</sup> Stillbirths not included.

**Table 16 Female deaths registered classified by cause and age group, April - June 2012**

Cause of Death	65 COD Code	ICD-10 Code	Total Females	Age Group										85 and over
				Under 1	1-4	5-14	15-24	25-34	35-44	45-54	55-64	65-74	75-84	
<b>Total Female Deaths</b>	<b>0</b>	<b>A00-Y89</b>	<b>3,494</b>	<b>21</b>	<b>6</b>	<b>7</b>	<b>12</b>	<b>24</b>	<b>77</b>	<b>129</b>	<b>279</b>	<b>451</b>	<b>1,006</b>	<b>1,482</b>
<b>Infectious and parasitic diseases:-</b>	<b>1</b>	<b>A00-B99</b>	<b>40</b>	<b>0</b>	<b>2</b>	<b>0</b>	<b>0</b>	<b>0</b>	<b>0</b>	<b>0</b>	<b>1</b>	<b>5</b>	<b>18</b>	<b>12</b>
Tuberculosis	2	A15-A19,B90	5	0	0	0	0	0	0	0	1	0	3	1
Meningococcal infection	3	A39	0	0	0	0	0	0	0	0	0	0	0	0
AIDS (HIV Disease)	4	B20-B24	0	0	0	0	0	0	0	0	0	0	0	0
Other infectious and parasitic diseases	5	B15-B19	2	0	0	0	0	0	0	1	0	1	0	0
<b>Neoplasms</b>	<b>6</b>	<b>C00-D48</b>	<b>980</b>	<b>0</b>	<b>1</b>	<b>2</b>	<b>3</b>	<b>8</b>	<b>33</b>	<b>72</b>	<b>163</b>	<b>219</b>	<b>286</b>	<b>193</b>
<b>Malignant Neoplasms of the:-</b>	<b>7</b>	<b>C00-C97</b>	<b>954</b>	<b>0</b>	<b>1</b>	<b>2</b>	<b>3</b>	<b>8</b>	<b>33</b>	<b>71</b>	<b>161</b>	<b>214</b>	<b>278</b>	<b>183</b>
Lip, oral cavity, pharynx	8	C00-C14	8	0	0	0	0	0	1	0	0	4	2	1
Oesophagus	9	C15	40	0	0	0	0	0	0	0	6	9	11	14
Stomach	10	C16	26	0	0	0	0	0	1	1	3	7	9	5
Colon	11	C18	62	0	0	0	0	0	1	3	11	13	19	15
Rectum and anus	12	C19-C21	33	0	0	0	0	0	1	1	9	8	10	4
Liver and the intrahepatic bile ducts	13	C22	15	0	0	0	0	0	0	2	1	2	6	4
Pancreas	14	C25	54	0	0	0	0	0	1	3	9	12	23	6
Larynx and trachea/bronchus /lung	15	C32-C34	187	0	0	0	1	0	0	9	38	56	62	21
Skin	16	C43	19	0	0	0	0	1	1	1	3	5	4	4
Breast	17	C50	160	0	0	0	0	0	11	20	31	27	37	34
Cervix uteri	18	C53	28	0	0	0	0	3	4	6	9	2	4	0
Other parts of uterus	19	C54-C55	27	0	0	0	0	0	1	5	7	7	10	4
Ovary	20	C56	68	0	0	0	0	0	1	7	14	16	22	8
Prostate	21	C61	0	0	0	0	0	0	0	0	0	0	0	0
Kidney	22	C64	7	0	0	0	1	0	1	0	0	2	1	2
Bladder	23	C67	15	0	0	0	0	0	0	0	0	2	4	9
Lymph/haematopoietic tissue	24	C81-C96	70	0	1	1	1	0	5	4	10	16	22	10
Other malignant neoplasms			135	0	0	1	0	4	5	13	12	26	32	42
<b>Diseases of the blood and blood-forming organs, immunological disorders</b>	<b>25</b>	<b>D50-D89</b>	<b>19</b>	<b>0</b>	<b>0</b>	<b>1</b>	<b>0</b>	<b>1</b>	<b>0</b>	<b>2</b>	<b>2</b>	<b>1</b>	<b>2</b>	<b>10</b>
<b>Endocrine, Nutritional and metabolic diseases</b>	<b>26</b>	<b>E00-E90</b>	<b>92</b>	<b>0</b>	<b>0</b>	<b>1</b>	<b>0</b>	<b>1</b>	<b>4</b>	<b>4</b>	<b>4</b>	<b>8</b>	<b>30</b>	<b>40</b>
Diabetes mellitus	27	E10-E14	69	0	0	0	0	0	1	3	2	7	22	34
<b>Mental and behavioural disorders</b>	<b>28</b>	<b>F00-F99</b>	<b>155</b>	<b>0</b>	<b>0</b>	<b>0</b>	<b>0</b>	<b>0</b>	<b>1</b>	<b>1</b>	<b>1</b>	<b>4</b>	<b>32</b>	<b>116</b>
Alcohol abuse (including alcoholic psychosis)	29	F10	0	0	0	0	0	0	0	0	0	0	0	0
Drug dependence, toxicomania	30	F11-F16,F18-F19	0	0	0	0	0	0	0	0	0	0	0	0
<b>Diseases of the nervous system and the sense organs</b>	<b>31</b>	<b>G00-H95</b>	<b>179</b>	<b>0</b>	<b>1</b>	<b>0</b>	<b>0</b>	<b>1</b>	<b>4</b>	<b>4</b>	<b>13</b>	<b>23</b>	<b>55</b>	<b>78</b>
Meningitis	32	G00-G03	0	0	0	0	0	0	0	0	0	0	0	0
<b>Diseases of the Circulatory System:-</b>	<b>33</b>	<b>I00-I99</b>	<b>1,183</b>	<b>0</b>	<b>0</b>	<b>0</b>	<b>0</b>	<b>1</b>	<b>8</b>	<b>23</b>	<b>47</b>	<b>111</b>	<b>353</b>	<b>640</b>
Ischaemic heart disease	34	I20-I25	525	0	0	0	0	0	3	7	28	53	167	267
of which: (Acute myocardial infarction)		I21	300	0	0	0	0	0	2	2	14	30	96	156
Other heart disease	35	I30-I33,I39-I52	184	0	0	0	0	0	2	5	3	8	35	131
Cerebrovascular disease	36	I60-I69	292	0	0	0	0	0	2	10	8	29	89	154
Other diseases of circulatory system			182	0	0	0	0	1	1	1	8	21	62	88



<b>Diseases of the Respiratory system</b>	<b>37</b>	<b>J00-J99</b>	<b>445</b>	<b>0</b>	<b>1</b>	<b>1</b>	<b>0</b>	<b>0</b>	<b>0</b>	<b>0</b>	<b>0</b>	<b>2</b>	<b>15</b>	<b>37</b>	<b>140</b>	<b>249</b>
Influenza	38	J10-J11	1	0	0	0	0	0	0	0	0	0	0	0	1	0
Pneumonia	39	J12-J19	171	0	1	0	0	0	0	0	1	0	4	6	42	117
Chronic Lower respiratory disease <i>of which: Asthma</i>	40 41	J40-J47 J45-J46	176 9	0 0	0 0	1 1	0 0	0 0	0 0	0 0	0 0	0 0	6 0	20 1	71 1	78 6
Other diseases of the respiratory system	97		97	0	0	0	0	0	0	0	0	1	5	11	26	54
<b>Diseases of the Digestive system</b>	<b>42</b>	<b>K00-K93</b>	<b>130</b>	<b>0</b>	<b>0</b>	<b>0</b>	<b>1</b>	<b>5</b>	<b>15</b>	<b>19</b>	<b>42</b>	<b>43</b>				
Ulcer of stomach, duodenum and jejunum	43	K25-K28	7	0	0	0	0	0	0	2	1	4	0	2	1	4
Chronic liver disease	44	K70,K73-K74	25	0	0	0	0	2	9	4	6	2	9	4	6	2
Other diseases of the digestive system	98		98	0	0	0	1	3	6	13	35	37				
<b>Diseases of the skin and subcutaneous tissue</b>	<b>45</b>	<b>L00-L99</b>	<b>5</b>	<b>0</b>	<b>0</b>	<b>0</b>	<b>0</b>	<b>0</b>	<b>0</b>	<b>1</b>	<b>2</b>	<b>1</b>	<b>0</b>	<b>1</b>	<b>2</b>	<b>1</b>
<b>Diseases of the musculoskeletal system/connective tissue</b>	<b>46</b>	<b>M00-M99</b>	<b>39</b>	<b>0</b>	<b>0</b>	<b>0</b>	<b>1</b>	<b>2</b>	<b>4</b>	<b>3</b>	<b>10</b>	<b>19</b>				
Rheumatoid arthritis and osteoarthritis	47	M05-M06,M15-M19	10	0	0	0	0	0	1	0	4	5				
<b>Diseases of the genitourinary system</b>	<b>48</b>	<b>N00-N99</b>	<b>83</b>	<b>0</b>	<b>0</b>	<b>0</b>	<b>0</b>	<b>3</b>	<b>0</b>	<b>6</b>	<b>22</b>	<b>51</b>				
Diseases of the kidney and ureter	49	N00-N29	52	0	0	0	0	3	0	3	17	28				
<b>Complications of pregnancy, childbirth and puerperium</b>	<b>50</b>	<b>O00-O99</b>	<b>0</b>	<b>0</b>	<b>0</b>	<b>0</b>	<b>0</b>	<b>0</b>	<b>0</b>	<b>0</b>	<b>0</b>	<b>0</b>	<b>0</b>	<b>0</b>	<b>0</b>	<b>0</b>
<b>Certain conditions originating in the perinatal period<sup>1</sup></b>	<b>51</b>	<b>P00-P96</b>	<b>11</b>	<b>11</b>	<b>0</b>	<b>0</b>	<b>0</b>	<b>0</b>	<b>0</b>	<b>0</b>	<b>0</b>	<b>0</b>	<b>0</b>	<b>0</b>	<b>0</b>	<b>0</b>
<b>Congenital malformations and chromosomal abnormalities</b>	<b>52</b>	<b>Q00-Q99</b>	<b>19</b>	<b>9</b>	<b>1</b>	<b>0</b>	<b>0</b>	<b>2</b>	<b>1</b>	<b>2</b>	<b>1</b>	<b>0</b>	<b>2</b>	<b>3</b>	<b>1</b>	<b>0</b>
Congenital malformations of the:- Nervous system	53	Q00-Q07	4	3	1	0	0	0	0	0	0	0	0	0	0	0
Circulatory system	54	Q20-Q28	3	2	0	0	0	1	0	0	0	0	0	0	0	0
<b>Symptoms, signs,,abnormal findings, ill-defined causes</b>	<b>55</b>	<b>R00-R99</b>	<b>9</b>	<b>1</b>	<b>0</b>	<b>0</b>	<b>0</b>	<b>1</b>	<b>0</b>	<b>2</b>	<b>1</b>	<b>2</b>	<b>2</b>	<b>1</b>	<b>2</b>	<b>2</b>
Sudden infant death syndrome	56	R95	1	1	0	0	0	0	0	0	0	0	0	0	0	0
Unknown and unspecified causes	57	R96-R99	5	0	0	0	1	0	2	0	2	0	2	0	2	0
<b>External causes of injury and poisoning</b>	<b>58</b>	<b>V01-Y89</b>	<b>105</b>	<b>0</b>	<b>0</b>	<b>2</b>	<b>8</b>	<b>15</b>	<b>10</b>	<b>11</b>	<b>11</b>	<b>28</b>	<b>10</b>	<b>10</b>	<b>11</b>	<b>28</b>
Accidents	59	V01-X59	74	0	0	1	2	3	9	10	8	26	7	7	8	26
<i>of which: Transport accidents</i>	60	V01-Y99	12	0	0	1	2	1	3	2	0	0	2	1	1	0
<i>Accidental falls</i>	61	W00-W19	20	0	0	0	0	1	1	2	1	8	1	4	3	8
<i>Accidental poisoning other accidents</i>	62	X40-X49	12	0	0	0	0	1	3	5	2	1	2	1	0	0
Suicide and intentional self harm	63	X60-X84	30	0	0	0	0	2	1	5	0	18	0	4	4	18
Homicide/assault	64	X85-Y09	22	0	0	1	5	6	1	2	1	1	2	1	1	0
Events of undetermined intent	65	Y10-Y34	1	0	0	0	1	0	0	0	0	0	0	0	0	0
All other external causes			3	0	0	0	0	1	1	0	0	0	0	1	0	0
			5	0	0	0	0	0	0	0	0	2	0	1	2	2

<sup>1</sup> Stillbirths not included.

**Table 17 Infant and neonatal mortality by area of residence of deceased,  
April - June 2012**

Area of residence	Infant mortality		Neonatal mortality	
	Number	Rate	Number	Rate
<b>STATE</b>	<b>47</b>	<b>2.6</b>	<b>41</b>	<b>2.3</b>
<b>LEINSTER</b>	<b>23</b>	<b>2.2</b>	<b>20</b>	<b>1.9</b>
Carlow	0	0.0	0	0.0
Dublin City	5	2.5	5	2.5
South Dublin	2	1.6	2	1.6
Fingal	2	1.5	1	0.7
Dun Laoghaire Rathdown	0	0.0	0	0.0
Kildare	3	3.4	3	3.4
Kilkenny	1	2.8	0	0.0
Laois	0	0.0	0	0.0
Longford	0	0.0	0	0.0
Louth	0	0.0	0	0.0
Meath	1	1.3	1	1.3
Offaly	1	3.3	1	3.3
Westmeath	2	5.4	2	5.4
Wexford	4	7.1	3	5.3
Wicklow	2	3.5	2	3.5
<b>MUNSTER</b>	<b>12</b>	<b>2.6</b>	<b>9</b>	<b>2.0</b>
Clare	1	2.2	1	2.2
Cork City	1	3.0	1	3.0
Cork County	5	3.1	3	1.8
Kerry	0	0.0	0	0.0
Limerick City	1	4.8	0	0.0
Limerick County	3	6.3	3	6.3
North Tipperary	0	0.0	0	0.0
South Tipperary	0	0.0	0	0.0
Waterford City	1	4.7	1	4.7
Waterford County	0	0.0	0	0.0
<b>CONNACHT</b>	<b>8</b>	<b>4.0</b>	<b>8</b>	<b>4.0</b>
Galway City	0	0.0	0	0.0
Galway County	5	7.5	5	7.5
Leitrim	1	8.8	1	8.8
Mayo	0	0.0	0	0.0
Roscommon	0	0.0	0	0.0
Sligo	2	7.8	2	7.8
<b>ULSTER (PART OF)</b>	<b>4</b>	<b>3.7</b>	<b>4</b>	<b>3.7</b>
Cavan	1	3.1	1	3.1
Donegal	2	3.8	2	3.8
Monaghan	1	4.0	1	4.0
<b>REGIONAL AUTHORITIES:</b>				
Border	7	3.7	7	3.7
Midland	3	2.5	3	2.5
West	5	3.0	5	3.0
Dublin	9	1.7	8	1.5
Mid-East	6	2.7	6	2.7
Mid-West	5	3.6	4	2.9
South-East	6	3.3	4	2.2
South-West	6	2.4	4	1.6

Infant mortality rates: Deaths of infants under one year per 1,000 live births, classified by area of residence of mother.

Neonatal mortality rates: Deaths of infants under 28 days per 1,000 live births, classified by area of residence of mother.

Infant and neonatal mortality rates in some areas, based on small numbers are subject to considerable fluctuation and caution should be exercised in their interpretation.

## Background Notes

**Methodology** All figures in this report are classified by quarter of registration. Delay in the registration of some births, deaths and marriages result in them being included in a later period in these quarterly reports.

**Revised rates** This report contains revisions to previously published rates for Marriages, Births and Deaths with effect from the second quarter of 2006. This is due to revised population estimates and the change from using De Facto population data to Usual Residence population data. All rates for periods prior to the second quarter of 2006 remain unchanged.

**Changes in methodology** The extension of the Limerick City boundary, which came into operation on 1st March 2008, has been taken into account in the compilation of the statistics from the Second Quarter of 2008. As a result, data for Limerick City and County are not directly comparable with any quarter prior to the Second Quarter 2008.

This publication continues with the 3 major changes in the methods by which mortality statistics are compiled. These changes were introduced in the Vital Statistics First Quarter 2007 publication.

- 1) Underlying Cause of Death is classified according to International Classification of Diseases, Version 10 (ICD10) instead of to International Classification of Diseases, Version 9 (ICD9). In addition, this and future publications will incorporate certain official updates to ICD-10. In particular, mental and behavioural disorders due to psychoactive substance use (F10-F19), with mention of intestinal infectious diseases (A00-A09), accidental, intentional self and undetermined intent poisoning by and exposure to noxious substances (X40-X49, X60-X69, Y10-Y19) or assault by chemical or noxious substance (X85-X90), are now coded to the latter.

<http://www.who.int/classifications/icd/icd10updates/en/index.html>

- 2) Deaths where there was not an inquest have been coded using the automated coding system developed by the U.S National Centre for Health Statistics (NCHS). Previously the Underlying Cause of Death was chosen manually for all deaths.
- 3) All deaths registered in the Quarter have been included in the statistics, in some cases with a provisional cause of death. Previously the practice was not to include deaths in the quarterly statistics until the cause of death had been definitely established.

Because of these changes, caution should be taken in directly comparing these mortality statistics with those of previous quarters. Many countries have found that moving to ICD10 does affect certain specific categories of causes of death. In particular, a significant drop in the number of deaths attributed to pneumonia and bronchopneumonia has been observed in some countries after moving to ICD10. These deaths were instead assigned to other conditions included on the death certificate.

The effect of the third change above has been to increase the number of deaths in our statistics as compared with previous years. Statistics for deaths due to external causes are particularly affected by this change. The previous method meant that some deaths were included in a later quarter of the year from when they had been registered, because of the delay involved in establishing a definite cause of death.

**Revised figures** This report contains upward revisions to previously published figures for births registered in quarter 3 of 2008, quarter 1 of 2009 and 2010, and also for the previously published numbers for deaths registered in quarter 1 of 2010 and 2011. The natural increase and totals for these years were also revised. These revisions were first published in the Vital Statistics Second Quarter 2011 report.

## Glossary of terms

### **NUTS III Regional Authority areas**

Border, Midland, West, Dublin, Mid-East, Mid-West, South-East, South-West

Border: Cavan, Donegal, Leitrim, Louth, Monaghan, Sligo.

Midland: Laois, Longford, Offaly, Westmeath.

West: Galway City, Galway County, Mayo, Roscommon.

Dublin: Dublin City, South Dublin, Fingal, Dun Laoghaire-Rathdown.

Mid-East: Kildare, Meath, Wicklow.

Mid-West: Clare, Limerick City, Limerick County, North Tipperary.

South-East: Carlow, Kilkenny, South Tipperary, Waterford City, Waterford County, Wexford.

South-West: Cork City, Cork County, Kerry.

## **Appendix**

**Causes of death Eurostat shortlist (August 1998)**

Nr	Disease or external cause	ICD-9 Code	ICD-10 Code
00	All causes of death	001-E999	A00-Y89
01	Infectious and Parasitic Diseases:-	001-139,279.8	A00-B99
02	Tuberculosis	010-018,137	A15-A19,B90
03	Meningococcal Infection	036	A39
04	AIDS (HIV Disease)	042-044,279.8	B20-B24
05	Viral Hepatitis	070	B15-B19
	other Infectious and Parasitic Diseases	Rem (001-139)	Rem (A00-B99)
06	Neoplasms	140-239	C00-D48
07	Malignant Neoplasms of the:-	140-208	C00-C97
08	Lip, Oral Cavity, Pharynx	140-149	C00-C14
09	Oesophagus	150	C15
10	Stomach	151	C16
11	Colon	153	C18
12	Rectum and Anus	154	C19-C20-C21
13	Liver and the Intrahepatic Bile Ducts	155	C22
14	Pancreas	157	C25
15	Larynx and Trachea/Bronchus/Lung	161-162	C32-C34
16	Skin	172	C43
17	Breast	174-175	C50
18	Cervix Uteri	180	C53
19	Other Parts of the Uterus	179,182	C54-C55
20	Ovary	183.0	C56
21	Prostate	185	C61
22	Kidney	189.0	C64
23	Bladder	188	C67
24	Lymph/Haematopoietic Tissue	200-208	C81-C96
	other Malignant Neoplasms	Rem (140-208)	Rem. (C00-C97)
25	Diseases of the Blood and Blood-forming Organs, Immunological disorders <sup>1</sup>	279-289	D50-D89
26	Endocrine, Nutritional and Metabolic Diseases	240-278	E00-E90
27	Diabetes Mellitus	250	E10-E14
28	Mental and Behavioural Disorders	290-319	F00-F99
29	Alcohol abuse (including Alcohol Psychosis)	291,303	F10
30	Drug Dependence, Toxicomania	304-305	F11-F16,F18-F19
31	Diseases of the Nervous System and the Sense Organs	320-389	G00-H95
32	Meningitis	320-322	G00-G03
33	Diseases of the Circulatory System:-	390-459	I00-I99
34	Ischaemic Heart Disease	410-414	I20-I25
	<i>(Acute Myocardial Infarction)</i>	410	I21
35	Other Heart Disease	420-423,425-429	I30-I33,I39-I52
36	Cerebrovascular Disease	430-438	I60-I69
	other Diseases of the Circulatory System	Rem (390-459)	Rem. (I00-I99)
37	Diseases of the Respiratory System	460-519	J00-J99
38	Influenza	487	J10-J11
39	Pneumonia	480-486	J12-J18
40	Chronic Lower Respiratory Disease	490-494,496	J40-J47
41	Asthma	493	J45-J46
	other Diseases of the Respiratory System	Rem (460-519)	Rem. (J00-J99)
42	Diseases of the Digestive System	520-579	K00-K93
43	Ulcer of Stomach, Duodenum and Jejunum	531-534	K25-K28
44	Chronic Liver Disease	571.0-571.9	K70,K73-K74
	other Diseases of the Digestive System	Rem (520-579)	Rem. (K00-K93)
45	Diseases of the Skin and Subcutaneous Tissue	680-709	L00-L99
46	Diseases of the Musculoskeletal System/Connective Tissue	710-739	M00-M99
47	Rheumatoid Arthritis and Osteoarthritis	714-715	M05-M06,M15-M19
48	Diseases of the Genitourinary System	580-629	N00-N99
49	Diseases of the Kidney and Ureter	580-594	N00-N29
50	Complications of Pregnancy, Childbirth and Puerperium	630-676	O00-O99
51	Certain Conditions Originating in the Perinatal Period (stillbirths not included)	760-779	P00-P96
52	Congenital Malformations and Chromosomal Abnormalities	740-759	Q00-Q99
53	Congenital malformations of the Nervous System	740-742	Q00-Q07
54	Congenital malformations of the Circulatory System	745-747	Q20-Q28
55	Symptoms, Signs, Abnormal Findings, Ill-defined Causes	780-799	R00-R99
56	Sudden Infant Death Syndrome	798.0	R95
57	Unknown and Unspecified Causes	798.1-9,799	R96-R99
	Injury and Poisoning	800-999	S00-T98
58	External Causes of Injury and Poisoning (included in the Foregoing)	E800-E999	V01-Y89
59	Accidents	E800-E929	V01-X59
60	Transport Accidents	E800-E848	V01-V99
	Road transport Accidents	E810-E829, E929.0	V01-V80,V87,V89,Y85
	Motor vehicle transport Accidents	E810-E819	
61	Accidental Falls	E880-E888	W00-W19
62	Accidental Poisoning	E850-E869	X40-X49
	other accidents	Rem (E800-E929)	Rem (V01-X59)
63	Suicide and Intentional Self Harm	E950-E959	X60-X84
64	Homicide/Assault	E960-E969	X85-Y09
65	Cause Undetermined	E980-E989	Y10-Y34
	other External Causes	Rem (E930-E999)	

<sup>1</sup> 279.8 not included

**Table A Estimated Population classified by Sex and Age Group, 2007 - 2012<sup>1</sup>***thousands*

Sex and Age Group	Persons in April of each year					
	2007	2008	2009	2010	2011 <sup>2</sup>	2012 <sup>3</sup>
<b>Total Persons</b>	<b>4,375.8</b>	<b>4,485.1</b>	<b>4,533.4</b>	<b>4,554.8</b>	<b>4,574.9</b>	<b>4,585.4</b>
0 - 4 years	310.5	324.0	335.2	347.0	356.0	364.6
5 - 9 "	297.2	306.2	310.7	314.6	319.6	324.8
10 - 14 "	276.5	283.1	290.5	296.1	301.0	305.4
15 - 19 "	291.4	295.6	294.3	289.4	281.0	275.7
20 - 24 "	371.7	373.6	354.4	326.3	298.6	277.7
25 - 29 "	399.8	408.3	400.6	381.6	362.9	341.2
30 - 34 "	361.3	369.5	374.5	381.2	393.4	392.3
35 - 39 "	335.3	348.6	356.3	359.7	363.1	364.3
40 - 44 "	308.1	313.6	316.7	321.8	329.3	335.7
45 - 49 "	281.2	288.5	295.6	300.9	304.1	308.1
50 - 54 "	253.2	258.0	262.3	267.4	273.7	278.2
55 - 59 "	227.9	232.6	235.7	239.6	243.4	248.0
60 - 64 "	190.7	199.8	207.7	214.0	217.1	220.0
65 - 69 "	144.1	149.8	156.6	163.5	172.1	181.5
70 - 74 "	119.5	121.7	124.6	127.9	130.1	132.7
75 - 79 "	92.5	94.5	96.8	99.1	101.4	103.6
80 - 84 "	65.6	65.9	66.9	68.4	69.8	71.0
85 years and over	49.4	51.9	54.0	56.1	58.2	60.5
<b>Total males</b>	<b>2,191.3</b>	<b>2,238.6</b>	<b>2,257.3</b>	<b>2,262.2</b>	<b>2,270.5</b>	<b>2,269.6</b>
0 - 4 years	159.4	165.9	171.4	177.6	182.0	186.0
5 - 9 "	151.9	156.3	158.5	160.8	163.5	166.1
10 - 14 "	141.9	145.3	149.2	152.1	154.5	156.4
15 - 19 "	147.5	149.6	150.3	147.7	143.7	141.3
20 - 24 "	187.6	186.5	173.5	160.1	148.6	138.6
25 - 29 "	202.6	204.7	198.4	186.1	175.1	163.5
30 - 34 "	184.6	186.9	188.1	189.8	194.9	191.3
35 - 39 "	171.3	177.6	180.3	181.0	181.9	181.5
40 - 44 "	154.9	157.5	159.5	162.2	165.9	168.5
45 - 49 "	141.2	144.5	147.9	149.8	151.3	153.1
50 - 54 "	127.4	129.5	131.6	133.7	136.7	138.2
55 - 59 "	115.2	117.3	118.7	120.3	121.8	123.6
60 - 64 "	96.1	101.0	104.9	107.6	109.2	110.0
65 - 69 "	71.9	74.4	78.0	81.5	85.6	90.6
70 - 74 "	56.9	58.1	59.8	61.8	62.9	64.4
75 - 79 "	40.8	42.4	43.9	45.1	46.3	47.6
80 - 84 "	25.0	25.3	26.3	27.3	28.3	29.4
85 years and over	15.2	15.9	16.8	17.7	18.4	19.4
<b>Total females</b>	<b>2,184.6</b>	<b>2,246.5</b>	<b>2,276.1</b>	<b>2,292.6</b>	<b>2,304.4</b>	<b>2,315.8</b>
0 - 4 years	151.1	158.1	163.8	169.4	174.1	178.6
5 - 9 "	145.4	150.0	152.2	153.8	156.2	158.7
10 - 14 "	134.6	137.9	141.2	144.0	146.6	149.0
15 - 19 "	144.0	146.0	143.9	141.7	137.4	134.4
20 - 24 "	184.1	187.1	180.9	166.2	149.9	139.2
25 - 29 "	197.2	203.6	202.1	195.6	187.8	177.7
30 - 34 "	176.8	182.6	186.4	191.4	198.5	201.0
35 - 39 "	164.0	171.0	176.0	178.7	181.2	182.9
40 - 44 "	153.2	156.1	157.3	159.6	163.4	167.1
45 - 49 "	140.1	143.9	147.7	151.1	152.9	155.0
50 - 54 "	125.8	128.5	130.7	133.7	137.1	140.0
55 - 59 "	112.7	115.3	117.0	119.3	121.6	124.3
60 - 64 "	94.5	98.8	102.8	106.4	107.9	109.9
65 - 69 "	72.2	75.4	78.6	82.0	86.5	90.9
70 - 74 "	62.6	63.6	64.8	66.2	67.2	68.3
75 - 79 "	51.6	52.1	52.9	54.0	55.0	55.9
80 - 84 "	40.5	40.5	40.6	41.0	41.5	41.6
85 years and over	34.2	36.0	37.2	38.5	39.8	41.1

<sup>1</sup> The population estimates for year ending April 2007 and later periods are based on the Usual Residence concept.<sup>2</sup> Census of Population<sup>3</sup> Preliminary

