



**An Phríomh-Oifig Staidrimh**  
Central Statistics Office

# Vital Statistics

## First Quarter

2011

This report contains upward revisions to the previously published figures for deaths registered in quarter 1 of 2010 and 2011. The natural increase and totals for these years are also revised. The data omissions occurred as a result of a data transmission and download issue, which was recently identified by the Central Statistics Office. Measures have been put in place to avoid any such problem arising again in the future. Please see:

<http://www.cso.ie/px/pxeirestat/statire/SelectTable/Omrade0.asp?Planguage=0>

Published by the Stationery Office, Dublin, Ireland.

Available from:

Central Statistics Office, Information Section, Skehard Road, Cork.

Compiled by the Central Statistics Office on behalf of the Department of Health and Children.

[No. 588]

September 2011

© Government of Ireland 2011

Material compiled and presented by  
Central Statistics Office.

Reproduction is authorised, except for commercial  
purposes, provided the source is acknowledged.

ISSN 0790-7710

# Contents

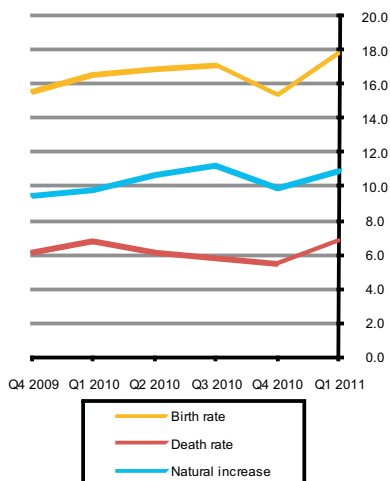
## First Quarter 2011

	<b>Page</b>
<b>Commentary</b>	4
<b>Tables</b>	
Table 1a	Marriages and births by quarter, 2006, 2010 and 2011 8
Table 1b	Births classified by age of mother at maternity by quarter 2006, 2010 and 2011 and their corresponding annual age specific (asfr) and total period fertility rates (tpfr) 8
Table 2a	Deaths registered by cause of death and by quarter, 2006, 2010 and 2011 9
Table 2b	Deaths registered by cause of death, by age and region 9
Table 3	Marriages, births, deaths and natural increase 10
Table 4	Annual marriage, birth, death and natural increase rates per 1,000 population 11
Table 5	Births registered, classified by area of residence of mother 12
Table 6	Births registered, classified by age of mother and previous number of liveborn children 13
Table 7	Number and percentage of births within and outside marriage, classified by age of mother 14
Table 8	Number and percentage of births registered within and outside marriage, classified by area of residence of mother 15
Table 9	Births registered, classified by area of residence and age of mother 16
Table 10	Births registered outside marriage, classified by area of residence and age of mother 17
Table 11	Births registered, classified by nationality of mother, marital status and age 17
Table 12	Deaths registered by county of residence of deceased 18
Table 13	Deaths registered by cause of death and county of residence of deceased 19
Table 14	Deaths registered classified by cause and age group 20
Table 15	Male deaths registered, classified by cause and age group 22
Table 16	Female deaths registered classified by cause and age group 24
Table 17	Infant and neonatal mortality by area of residence of deceased 26
<b>Background Notes</b>	27
<b>Appendix</b>	
	Causes of death Eurostat shortlist (August 1998) 30
	Estimated population classified by sex and age group, 2005-2010 31

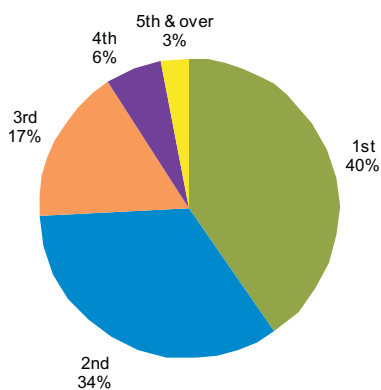
# First Quarter 2011

## Commentary

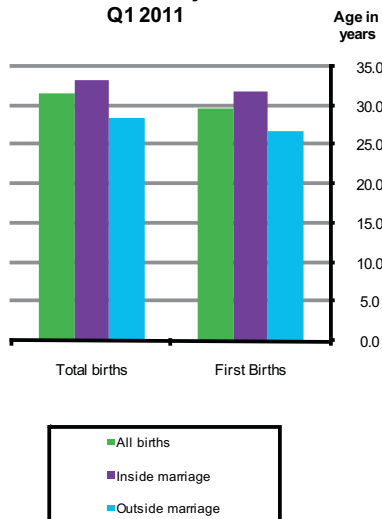
**Fig. 1.1 Annual birth, death and natural increase rates per 1,000 population**



**Fig. 1.2 Birth Order Q1 2011**



**Fig. 1.3 Average age at maternity Q1 2011**



## Introduction

This report has been prepared by the Central Statistics Office for the Minister for Social Protection in accordance with the provisions of Section 2 of the Vital Statistics and Births, Deaths and Marriages Registration Act, 1952 and Section 73 of the Civil Registration Act 2004.

## Births

There were 19,950 births registered in quarter 1 of 2011, 10,221 males and 9,729 females. The corresponding total for quarter 1 2010 was 1,415 lower at 18,535 births, while the quarter 1 2006 total was 3,992 lower at 15,958 births. The quarter 1 2011 total is 33.2% higher than in 2002 when 14,972 babies were registered. See tables 1, 3, 4 and 5.

The quarter 1 2011 total is the highest number of births registered in a quarter since the series began in 1960. Quarter 2 of 1980 had the next highest number of births registered, with 19,339 births, while the third highest number of births registered in a quarter was in more recent years, quarter 3 2009 with 19,289 births.

The 19,950 births represent an annual birth rate of 17.8 per 1,000 of the population, 1.2 above quarter 1 of 2010. This rate is 2.2 per 1,000 population higher than in 2002. See tables 1, 4, 5 and fig. 1.1.

## Birth order

A total of 8,008 births (40.3%) were to first time mothers in quarter 1 of 2011. Second time mothers had 6,730 births (33.9%). First births in the first quarter of 2010 and 2006 accounted for 42.0% and 41.1% of all births, respectively. The number of first births registered in quarter 1 2002 was 6,127 (41.2%). See tables 1, 3, 4, 6 and fig. 1.2.

## Age of mothers

The average age of mothers for births registered in quarter 1 2011 was 31.7 years, 0.3 years more than the corresponding figure in quarter 1 2010, 0.8 years more than in quarter 1 2006, and 1.4 years more than in quarter 1 2002. The average age of mothers having their first child in quarter 1 2011 was 29.7 years. See tables 3, 9 and fig. 1.3.

## Births outside marriage

There were 6,768 births registered as outside marriage in quarter 1 of 2011. This accounted for 33.9% of all births, a decrease of 0.1 percentage points on quarter 1 2010 and an increase of 1.3 percentage points on quarter 1 2006. The highest percentage of births outside marriage was in Limerick City at 52%, while the lowest percentage of births outside marriage was in Leitrim at 21%. In quarter 1 2002, 4,877 births were registered outside marriage or 32.6% of all births. See tables 1, 3, 4, 8 and 10.

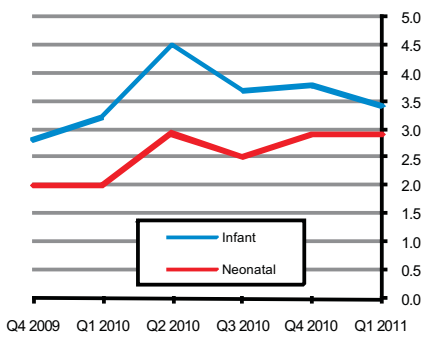
The average age of mothers at maternity outside of marriage, was 28.5 years. This ranged from 30.8 years in Galway City to 27.1 years in both Limerick City and Sligo. See table 10.

## Deaths

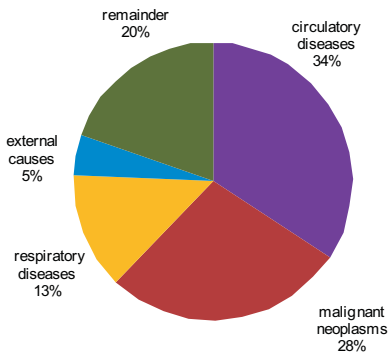
There were 7,651 deaths registered in quarter 1 2011, 3,882 males and 3,769 females. This represents an annual death rate of 6.8 per 1,000 population. The

quarter 1 2011 total is 1.2% higher than in 2010 and 4.5% higher than in 2006, when 7,563 and 7,320 deaths were registered. See tables 2, 3, 12 and fig. 1.1.

**Fig. 1.4 Infant and neonatal mortality rates per 1,000 live births**



**Fig. 1.5 Principal causes of death, Q1 2011**



**Age at death**

There were 67 infant deaths registered in quarter 1 2011 giving an infant mortality rate of 3.4 deaths per 1,000 live births. Neonatal deaths are deaths of infants at ages under 4 weeks. There were 58 neonatal deaths registered in quarter 1 2011, a neonatal mortality rate of 2.9 deaths per 1,000 live births. See tables 3, 4 and fig.1.4.

There were 6,089 deaths of persons aged 65 and over registered in quarter 1 2011. This represents an annual death rate of 47.8 per 1,000 population aged 65 and over. See tables 3 and 4.

**Cause of death**

• **Diseases of the Circulatory System:**

Diseases of the Circulatory System accounted for 2,612 deaths, or an annual rate of 2.3 per 1,000 population. Of these, 1,324 were due to Ischaemic Heart Disease and 571 to Cerebrovascular Disease. See tables 2, 14 and fig.1.5.

• **Malignant Neoplasms:**

There were 2,143 deaths from malignant neoplasms. This is equivalent to an annual rate of 1.9 per 1,000 population. See tables 2, 14 and fig.5.

• **Lung Diseases:**

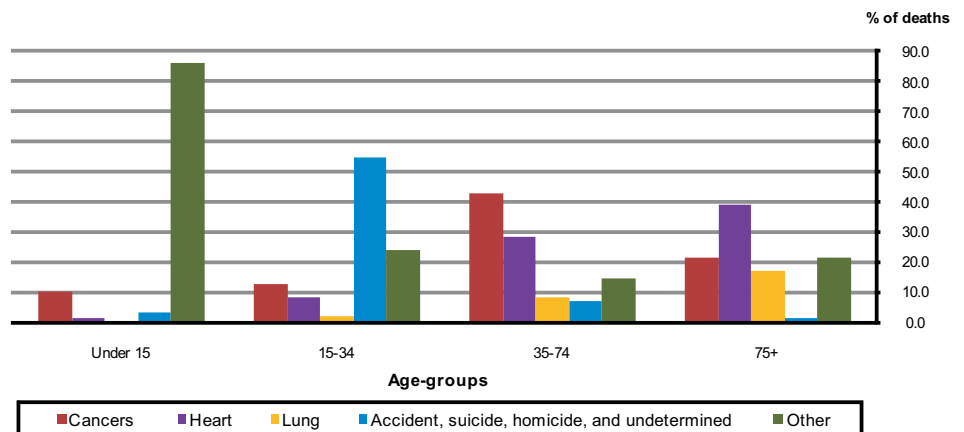
Deaths from pneumonia numbered 353; chronic lower respiratory disease accounted for 424 deaths and 249 deaths resulted from other respiratory diseases. See tables 2, 14 and fig.1.5.

• **Accidents, suicides and other:**

There were 358 deaths due to accidents, suicides and other external causes. Accidents accounted for almost 62% (219) of these deaths, while suicides accounted for just under 27% (95). Of these 358 deaths, over 76% were male. See tables 2, 14 and fig.1.5.

The leading cause of death in quarter 1 2011 varied widely by age group. Among young adults aged 15-34, external causes of death including accidents, suicide and other ranked first. Among individuals aged 35-74, cancers were the leading cause, while for those aged 75 and older, it was diseases of the heart and arteries. See tables 14 and fig.1.6.

**Fig. 1.6 Causes of death classified by age-groups, quarter 1 2011**



### **Natural increase**

The natural increase in the population (births minus deaths) for quarter 1 2011 was 12,299. This represents a rate of 11.0 per 1,000 population, 1.2 higher than quarter 1 of 2010. See *tables 3, 4 and fig.1.1*.

### **Marriages**

The number of marriages registered during the quarter was 3,052, equivalent to an annual marriage rate of 2.7 per 1,000 population, 0.3 below the rate in the corresponding quarter of 2010. The quarter 1 2011 total is 22.9% lower than in quarter 1 2002 when 2,484 marriages were registered. See *tables 3 and 4*.

### **Population**

The estimated population in April 2010 was 4,470,700.

## **Tables**

**Table 1a Marriages and births by quarter, 2006, 2010 and 2011**

Event	Q1 of 2006			Q1 of 2010			Q4 of 2010			Q1 of 2011		
	Number	% of total	Rate <sup>1</sup>	Number	% of total	Rate <sup>1</sup>	Number	% of total	Rate <sup>1</sup>	Number	% of total	Rate <sup>1</sup>
<b>Marriages</b>	<b>3,329</b>	<b>100.0</b>	<b>3.2</b>	<b>3,381</b>	<b>100.0</b>	<b>3.0</b>	<b>4,464</b>	<b>100.0</b>	<b>4.0</b>	<b>3,052</b>	<b>100.0</b>	<b>2.7</b>
<b>Live Births total</b>	<b>15,958</b>	<b>100.0</b>	<b>15.4</b>	<b>18,535</b>	<b>100.0</b>	<b>16.6</b>	<b>17,174</b>	<b>100.0</b>	<b>15.4</b>	<b>19,950</b>	<b>100.0</b>	<b>17.8</b>
<i>of which;</i>												
inside marriage	10,477	65.7	9.9	12,226	66.0	10.9	11,309	65.8	10.1	13,182	66.1	11.8
outside marriage	5,481	34.3	5.2	6,309	34.0	5.6	5,865	34.2	5.2	6,768	33.9	6.1
<b>Sex of child</b>												
Male	8,204	51.4	7.7	9,519	51.4	8.5	8,750	50.9	7.8	10,221	51.2	9.1
Female	7,754	48.6	7.3	9,016	48.6	8.1	8,424	49.1	7.5	9,729	48.8	8.7
<b>Residence of mother</b>												
Border	1,676	10.5	14.7	1,942	10.5	15.6	1,633	9.5	13.1	1,999	10.0	16.1
Midland	1,006	6.3	16.9	1,223	6.6	18.2	1,102	6.4	16.3	1,227	6.2	18.2
West	1,497	9.4	14.9	1,660	9.0	15.5	1,592	9.3	14.8	1,712	8.6	15.9
Dublin	4,304	27.0	14.5	5,360	28.9	17.5	4,726	27.5	15.4	5,951	29.8	19.3
Mid-East	2,037	12.8	18.7	2,426	13.1	18.7	2,312	13.5	17.8	2,667	13.4	20.5
Mid-West	1,416	8.9	17.6	1,464	7.9	15.6	1,403	8.2	14.9	1,575	7.9	16.8
South-East	1,751	11.0	14.3	1,909	10.3	15.5	1,895	11.0	15.4	2,017	10.1	16.4
South-West	2,271	14.2	14.8	2,551	13.8	15.7	2,511	14.6	15.4	2,802	14.0	17.2
<b>Previous no. of liveborn children</b>												
0	6,449	40.4	6.1	7,759	41.9	6.9	7,244	42.2	6.5	8,008	40.1	7.2
1	4,923	30.8	4.6	6,024	32.5	5.4	5,670	33.0	5.1	6,730	33.7	6.0
2	2,685	16.8	2.5	3,010	16.2	2.7	2,719	15.8	2.4	3,330	16.7	3.0
3	1,067	6.7	1.0	1,107	6.0	1.0	971	5.7	0.9	1,186	5.9	1.1
4	328	2.1	0.3	333	1.8	0.3	310	1.8	0.3	393	2.0	0.4
5 or more	225	1.4	0.2	239	1.3	0.2	183	1.1	0.2	215	1.1	0.2
Not stated	281	1.8	0.3	63	0.3	0.1	77	0.4	0.1	88	0.4	0.1
<b>Nationality</b>												
Ireland	-	-	-	14,120	76.2	12.6	13,055	76.0	11.7	15,498	77.7	13.9
United Kingdom	-	-	-	431	2.3	0.4	402	2.3	0.4	436	2.2	0.4
Other EU15	-	-	-	277	1.5	0.2	260	1.5	0.2	277	1.4	0.2
Accession states	-	-	-	1,915	10.3	1.7	1,824	10.6	1.6	2,068	10.4	1.9
Other	-	-	-	1,505	8.1	1.3	1,453	8.5	1.3	1,541	7.7	1.4
Not stated	-	-	-	287	1.5	0.3	180	1.0	0.2	130	0.7	0.1
<b>Total</b>	-	-	-	<b>18,535</b>	<b>100.0</b>	<b>16.6</b>	<b>17,174</b>	<b>100.0</b>	<b>15.4</b>	<b>19,950</b>	<b>100.0</b>	<b>17.8</b>

<sup>1</sup> Rate per year per 1,000 population. Rates based on estimated overall population for given year. Rates for residence of mother are based on estimated regional population for given year.

**Table 1b Births classified by age of mother at maternity by quarter, 2006, 2010 and 2011 and their corresponding annual age specific (asfr) and total period fertility rates (tpfr)**

Age	Q1 of 2006			Q1 of 2010			Q4 of 2010			Q1 of 2011		
	Number	% of total	Fertility rate	Number	% of total	Fertility rate	Number	% of total	Fertility rate	Number	% of total	Fertility rate
< 20 years	649	4.1	18.3	534	2.9	15.6	476	2.8	14.2	498	2.5	14.8
20-24 years	2,186	13.7	51.6	2,090	11.3	53.6	1,814	10.6	51.0	2,046	10.3	57.5
25-29 years	3,660	22.9	47.6	4,485	24.2	86.0	4,022	23.4	80.1	4,490	22.5	89.5
30-34 years	5,444	34.1	126.8	6,303	34.0	136.0	6,011	35.0	126.1	7,108	35.6	149.1
35-39 years	3,331	20.9	84.3	4,227	22.8	98.1	4,029	23.5	92.5	4,770	23.9	109.6
40-44 years	646	4.0	17.3	849	4.6	21.9	776	4.5	19.8	971	4.9	24.8
45+ years	22	0.1	0.6	39	0.2	1.1	42	0.2	1.1	62	0.3	1.7
Not stated	20	0.1	-	8	0.0	-	4	0.0	-	5	0.0	-
<b>Total</b>	<b>15,958</b>	<b>100.0</b>	<b>1.7</b>	<b>18,535</b>	<b>100.0</b>	<b>2.1</b>	<b>17,174</b>	<b>100.0</b>	<b>1.9</b>	<b>19,950</b>	<b>100.0</b>	<b>2.2</b>



**Table 2a Deaths registered by cause of death and by quarter, 2006, 2010 and 2011**

Quarter	Malignant Cancers		Diseases of the heart and arteries		Lung diseases		Accidents, Suicides & Others		Other Causes		Total	% of total
		% of total		% of total		% of total		% of total		% of total		
Q1 of 2011	2,273	28.1	2,754	34.0	1,094	13.5	367	4.5	1,605	19.8	8,093	100.0
Q4 of 2010	1,826	29.9	2,016	33.0	687	11.2	442	7.2	1,142	18.7	6,113	100.0
Q1 of 2010	2,178	27.2	2,827	35.3	1,081	13.5	373	4.7	1,547	19.3	8,006	100.0
Q1 of 2006	2,063	28.2	2,665	36.4	1,208	16.5	154	2.1	1,230	16.8	7,320	100.0

**Table 2b Deaths registered by cause of death, by age and region, First Quarter 2011**

Age (years)	Malignant Cancers		Diseases of the heart and arteries		Lung diseases		Accidents, Suicides & Others		Other Causes		Total	% of total
		% of total		% of total		% of total		% of total		% of total		
<b>Persons</b>												
Under 1	-	-	-	-	-	-	1	0.3	71	4.4	72	0.9
1 - 4	1	0.0	-	-	-	-	2	0.5	5	0.3	8	0.1
5 - 14	9	0.4	1	0.0	1	0.1	-	-	8	0.5	19	0.2
15 - 24	3	0.1	3	0.1	-	-	48	13.1	10	0.6	64	0.8
25 - 34	22	1.0	12	0.4	3	0.3	60	16.3	21	1.3	118	1.5
35 - 44	59	2.6	26	0.9	5	0.5	45	12.3	45	2.8	180	2.2
45 - 54	144	6.3	99	3.6	19	1.7	50	13.6	60	3.7	372	4.6
55 - 64	364	16.0	218	7.9	63	5.8	53	14.4	107	6.7	805	9.9
65 - 74	594	26.1	421	15.3	129	11.8	35	9.5	184	11.5	1,363	16.8
75 - 84	684	30.1	843	30.6	385	35.2	29	7.9	461	28.7	2,402	29.7
85 +	393	17.3	1,131	41.1	489	44.7	44	12.0	633	39.4	2,690	33.2
<b>Total</b>	<b>2,273</b>	<b>100.0</b>	<b>2,754</b>	<b>100.0</b>	<b>1,094</b>	<b>100.0</b>	<b>367</b>	<b>100.0</b>	<b>1,605</b>	<b>100.0</b>	<b>8,093</b>	<b>100.0</b>
<b>Males</b>												
Under 1	-	-	-	-	-	-	1	0.3	43	2.7	44	0.5
1 - 4	1	0.0	-	-	-	-	1	0.3	3	0.2	5	0.1
5 - 14	6	0.3	1	0.0	1	0.1	-	-	4	0.2	12	0.1
15 - 24	1	0.0	1	0.0	-	-	42	11.4	6	0.4	50	0.6
25 - 34	15	0.7	8	0.3	2	0.2	55	15.0	12	0.7	92	1.1
35 - 44	18	0.8	18	0.7	4	0.4	35	9.5	25	1.6	100	1.2
45 - 54	64	2.8	62	2.3	14	1.3	41	11.2	39	2.4	220	2.7
55 - 64	195	8.6	169	6.1	39	3.6	39	10.6	59	3.7	501	6.2
65 - 74	345	15.2	277	10.1	87	8.0	25	6.8	113	7.0	847	10.5
75 - 84	368	16.2	469	17.0	208	19.0	18	4.9	219	13.6	1,282	15.8
85 +	176	7.7	381	13.8	170	15.5	22	6.0	198	12.3	947	11.7
<b>Total</b>	<b>1,189</b>	<b>52.3</b>	<b>1,386</b>	<b>50.3</b>	<b>525</b>	<b>48.0</b>	<b>279</b>	<b>76.0</b>	<b>721</b>	<b>44.9</b>	<b>4,100</b>	<b>50.7</b>
<b>Females</b>												
Under 1	-	-	-	-	-	-	-	-	28	1.7	28	0.3
1 - 4	-	-	-	-	-	-	1	0.3	2	0.1	3	0.0
5 - 14	3	0.1	-	-	-	-	-	-	4	0.2	7	0.1
15 - 24	2	0.1	2	0.1	-	-	6	1.6	4	0.2	14	0.2
25 - 34	7	0.3	4	0.1	1	0.1	5	1.4	9	0.6	26	0.3
35 - 44	41	1.8	8	0.3	1	0.1	10	2.7	20	1.2	80	1.0
45 - 54	80	3.5	37	1.3	5	0.5	9	2.5	21	1.3	152	1.9
55 - 64	169	7.4	49	1.8	24	2.2	14	3.8	48	3.0	304	3.8
65 - 74	249	11.0	144	5.2	42	3.8	10	2.7	71	4.4	516	6.4
75 - 84	316	13.9	374	13.6	177	16.2	11	3.0	242	15.1	1,120	13.8
85 +	217	9.5	750	27.2	319	29.2	22	6.0	435	27.1	1,743	21.5
<b>Total</b>	<b>1,084</b>	<b>47.7</b>	<b>1,368</b>	<b>49.7</b>	<b>569</b>	<b>52.0</b>	<b>88</b>	<b>24.0</b>	<b>884</b>	<b>55.1</b>	<b>3,993</b>	<b>49.3</b>
<b>Region</b>												
Border	277	12.2	375	13.6	131	12.0	28	7.6	209	13.0	1,020	12.6
Midland	124	5.5	162	5.9	69	6.3	29	7.9	108	6.7	492	6.1
West	239	10.5	283	10.3	129	11.8	37	10.1	160	10.0	848	10.5
Dublin	628	27.6	661	24.0	257	23.5	92	25.1	422	26.3	2,060	25.5
Mid-East	195	8.6	236	8.6	98	9.0	30	8.2	148	9.2	707	8.7
Mid-West	199	8.8	292	10.6	127	11.6	40	10.9	136	8.5	794	9.8
South-East	258	11.4	333	12.1	137	12.5	50	13.6	193	12.0	971	12.0
South-West	353	15.5	412	15.0	146	13.3	61	16.6	229	14.3	1,201	14.8
<b>Total</b>	<b>2,273</b>	<b>100.0</b>	<b>2,754</b>	<b>100.0</b>	<b>1,094</b>	<b>100.0</b>	<b>367</b>	<b>100.0</b>	<b>1,605</b>	<b>100.0</b>	<b>8,093</b>	<b>100.0</b>

**Table 3 Marriages, births, deaths and natural increase**

	Marriages <sup>1</sup>	Live Births				Deaths <sup>2</sup>				Natural Increase
		Total	First	Outside marriage	Average Age	Total	Infant	Neonatal	65 & over	
<b>Quarter 1</b>										
2002	2,484	14,972	6,127	4,877	30.3	7,749	73	51	6,281	7,223
2003	2,571	15,238	6,158	5,080	30.3	7,756	67	52	6,259	7,482
2004	2,755	15,599	6,082	5,181	30.7	7,873	72	56	6,347	7,726
2005	2,892	15,334	6,290	5,147	30.9	7,352	65	47	5,920	7,982
2006	3,329	15,958	6,449	5,481	30.9	7,320	56	36	6,040	8,638
2007	3,401	17,473	7,226	5,905	31.1	7,910	48	37	6,326	9,563
2008	3,228	19,154	8,088	6,480	31.1	7,525	63	42	6,011	11,629
2009	3,450	18,787	7,897	6,405	31.2	8,419	59	41	6,739	10,368
2010	3,381	18,535	7,759	6,309	31.4	7,563	59	37	6,052	10,972
2011	3,052	19,950	8,008	6,768	31.7	7,651	67	58	6,089	12,299
<b>Quarter 2</b>										
2002	4,810	15,247	5,858	4,672	30.5	7,680	91	64	6,074	7,567
2003	4,827	15,582	6,095	4,689	30.6	7,203	83	59	5,625	8,379
2004	4,953	15,535	5,897	4,874	30.8	6,881	74	53	5,351	8,654
2005	5,374	15,306	5,922	4,810	31.1	7,349	70	52	5,826	7,957
2006	5,274	15,979	6,315	5,056	31.1	6,967	65	44	5,488	9,012
2007	5,558	17,127	6,926	5,428	31.2	6,902	60	34	5,394	10,225
2008	5,351	19,040	7,712	6,174	31.2	7,569	90	62	5,857	11,471
2009	5,342	18,844	7,858	6,114	31.3	7,020	52	41	5,356	11,824
2010	5,003	18,844	7,749	6,205	31.5	6,929	84	54	5,344	11,915
2011										
<b>Quarter 3</b>										
2002	7,580	15,593	6,333	4,855	30.4	6,941	68	50	5,391	8,652
2003	7,996	15,909	6,240	4,981	30.6	6,639	85	68	5,147	9,270
2004	8,376	15,605	6,171	5,100	30.8	6,473	72	43	5,123	9,132
2005	8,347	16,170	6,548	5,101	30.9	6,380	50	33	4,919	9,790
2006	8,335	16,920	6,891	5,541	31.0	6,657	58	46	5,146	10,263
2007	8,949	18,554	7,636	6,019	31.1	6,455	48	32	4,976	12,099
2008	8,751	18,991	7,960	6,286	31.1	6,674	67	50	5,108	12,317
2009	8,050	19,289	8,170	6,256	31.2	6,638	80	53	5,039	12,651
2010	7,787	19,171	7,815	6,481	31.4	6,517	71	48	5,010	12,654
2011										
<b>Quarter 4</b>										
2002	5,682	14,709	5,989	4,411	30.5	6,978	74	49	5,378	7,731
2003	4,908	14,788	5,883	4,563	30.7	7,225	76	52	5,568	7,563
2004	4,895	14,945	5,975	4,783	30.9	6,924	82	62	5,253	8,021
2005	4,742	14,232	5,861	4,470	31.1	6,360	59	45	4,827	7,872
2006	5,151	15,380	6,456	5,217	31.0	6,535	58	42	4,946	8,845
2007	4,848	17,466	7,481	5,818	31.1	6,783	65	46	5,128	10,683
2008	4,857	17,880	7,608	5,904	31.2	6,424	70	46	4,871	11,456
2009	4,699	17,358	7,426	5,757	31.4	6,821	49	34	5,098	10,537
2010	4,464	17,174	7,244	5,865	31.5	6,113	65	49	4,763	11,061
2011										
<b>Total</b>										
2002	20,556	60,521	24,307	18,815	30.4	29,348	306	214	23,124	31,173
2003	20,302	61,517	24,376	19,313	30.6	28,823	311	231	22,599	32,694
2004	20,979	61,684	24,125	19,938	30.8	28,151	300	214	22,074	33,533
2005	21,355	61,042	24,621	19,528	31.0	27,441	244	177	21,492	33,601
2006	22,089	64,237	26,111	21,295	31.0	27,479	237	168	21,620	36,758
2007	22,756	70,620	29,269	23,170	31.1	28,050	221	149	21,824	42,570
2008	22,187	75,065	31,368	24,844	31.1	28,192	290	200	21,847	46,873
2009	21,541	74,278	31,351	24,532	31.3	28,898	240	169	22,232	45,380
2010	20,635	73,724	30,567	24,860	31.5	27,122	279	188	21,169	46,602
2011										

<sup>1</sup> 2002 and 2004 - 2008 marriage figures are final. All other marriage figures are subject to revision.<sup>2</sup> See 'Background Notes' for changes in methodology effective from 2007.

**Table 4 Annual marriage, birth, death and natural increase rates per 1,000 population**

	Marriages	Live Births			Deaths				Natural Increase	
		Total	% First births <sup>1</sup>	% Outside marriage	Total	Infant Mortality <sup>2</sup>	Neonatal Mortality <sup>3</sup>	65 & over		
<b>Quarter 1</b>										
2002	2.6	15.6	41.2	32.6	8.1	4.9	3.4	58.5	7.5	
2003	2.6	15.6	40.7	33.3	7.9	4.4	3.4	57.4	7.6	
2004	2.8	15.7	40.4	33.2	7.9	4.6	3.6	57.5	7.8	
2005	2.9	15.2	41.3	33.6	7.3	4.2	3.1	52.7	7.9	
2006	3.2	15.4	41.1	34.3	7.1	3.5	2.3	52.6	8.4	
2007	3.2	16.5	42.2	33.8	7.5	2.7	2.1	54.1	9.0	
2008	3.0	17.7	42.6	33.8	6.9	3.3	2.2	51.1	10.7	
2009	3.1	17.0	42.2	34.1	7.6	3.1	2.2	56.0	9.4	
2010	3.0	16.6	42.0	34.0	6.8	3.2	2.0	48.9	9.8	
2011	2.7	17.8	40.3	33.9	6.8	3.4	2.9	47.8	11.0	
<b>Quarter 2</b>										
2002	4.9	15.6	38.8	30.6	7.8	6.0	4.2	55.7	7.7	
2003	4.9	15.7	39.5	30.1	7.2	5.3	3.8	50.9	8.4	
2004	4.9	15.4	38.8	31.4	6.8	4.8	3.4	47.6	8.6	
2005	5.2	14.8	38.8	31.4	7.1	4.6	3.4	50.8	7.7	
2006	5.0	15.1	41.1	31.6	6.6	4.1	2.8	46.9	8.5	
2007	5.1	15.8	40.9	31.7	6.4	3.5	2.0	45.9	9.4	
2008	4.8	17.2	40.8	32.4	6.8	4.7	3.3	48.6	10.4	
2009	4.8	16.9	42.0	32.4	6.3	2.8	2.2	43.3	10.6	
2010	4.5	16.9	41.3	32.9	6.2	4.5	2.9	42.0	10.7	
2011										
<b>Quarter 3</b>										
2002	7.7	15.9	41.0	31.1	7.1	4.4	3.2	49.5	8.8	
2003	8.0	16.0	39.6	31.3	6.7	5.3	4.3	46.6	9.3	
2004	8.3	15.4	39.8	32.7	6.4	4.6	2.8	45.6	9.0	
2005	8.1	15.6	40.7	31.5	6.2	3.1	2.0	42.9	9.5	
2006	7.9	16.0	41.6	32.7	6.3	3.4	2.7	44.0	9.7	
2007	8.2	17.1	41.4	32.4	6.0	2.6	1.7	42.3	11.2	
2008	7.9	17.2	42.1	33.1	6.0	3.5	2.6	42.4	11.1	
2009	7.2	17.3	42.6	32.4	6.0	4.1	2.7	40.7	11.3	
2010	7.0	17.2	41.0	33.8	5.8	3.7	2.5	39.3	11.3	
2011										
<b>Quarter 4</b>										
2002	5.8	15.0	41.2	30.0	7.1	5.0	3.3	49.3	7.9	
2003	4.9	14.9	40.9	30.9	7.3	5.1	3.5	50.4	7.6	
2004	4.8	14.8	40.3	32.0	6.8	5.5	4.1	46.7	7.9	
2005	4.6	13.8	41.4	31.4	6.2	4.1	3.2	42.1	7.6	
2006	4.9	14.5	42.3	33.9	6.2	3.8	2.7	42.3	8.3	
2007	4.5	16.1	43.2	33.3	6.3	3.7	2.6	43.6	9.8	
2008	4.4	16.2	42.8	33.0	5.8	3.9	2.6	40.5	10.4	
2009	4.2	15.6	42.9	33.2	6.1	2.8	2.0	41.2	9.5	
2010	4.0	15.4	42.4	34.2	5.5	3.8	2.9	37.4	9.9	
2011										
<b>Total</b>										
2002	5.2	15.5	40.5	31.1	7.5	5.1	3.5	53.0	8.0	
2003	5.1	15.5	40.2	31.4	7.2	5.1	3.8	51.1	8.2	
2004	5.2	15.2	39.8	32.3	7.0	4.9	3.5	49.1	8.3	
2005	5.2	14.8	40.5	32.0	6.6	4.0	2.9	46.8	8.1	
2006	5.2	15.2	41.5	33.2	6.5	3.7	2.6	46.2	8.7	
2007	5.2	16.3	41.9	32.8	6.5	3.1	2.1	46.4	9.8	
2008	5.0	17.0	42.1	33.1	6.4	3.9	2.7	45.4	10.6	
2009	4.8	16.7	42.4	33.0	6.5	3.2	2.3	44.9	10.2	
2010	4.6	16.5	41.6	33.7	6.1	3.8	2.6	41.6	10.4	
2011										

<sup>1</sup> First births divided by the total number of live births (excluding those with unstated parity), multiplied by 100.<sup>2</sup> Infant mortality is the number of infant deaths per 1,000 live births.<sup>3</sup> Neonatal mortality is the number of neonatal (infants aged under 4 weeks) deaths per 1,000 live births.

**Table 5 Births registered, classified by area of residence of mother, January - March 2011**

Area of residence	Total	Male	Female	Rate <sup>1</sup>
<b>STATE</b>	<b>19,950</b>	<b>10,221</b>	<b>9,729</b>	<b>17.8</b>
<b>LEINSTER</b>	<b>11,609</b>	<b>5,973</b>	<b>5,636</b>	<b>19.2</b>
Carlow	272	153	119	20.5
Dublin City	2,172	1,106	1,066	16.3
South Dublin	1,378	657	721	21.2
Fingal	1,602	843	759	25.3
Dun Laoghaire Rathdown	799	413	386	15.6
Kildare	1,088	544	544	22.1
Kilkenny	371	190	181	16.1
Laois	359	206	153	20.3
Longford	169	91	78	18.6
Louth	503	278	225	17.1
Meath	925	502	423	21.5
Offaly	302	155	147	16.2
Westmeath	397	199	198	19.0
Wexford	618	319	299	17.8
Wicklow	654	317	337	19.7
<b>MUNSTER</b>	<b>5,133</b>	<b>2,600</b>	<b>2,533</b>	<b>16.6</b>
Clare	455	227	228	15.6
Cork City	444	234	210	14.1
Cork County	1,812	940	872	19.0
Kerry	546	251	295	14.8
Limerick City	231	124	107	14.7
Limerick County	609	293	316	18.6
North Tipperary	280	140	140	16.1
South Tipperary	277	143	134	12.6
Waterford City	204	111	93	16.9
Waterford County	275	137	138	16.8
<b>CONNACHT</b>	<b>2,070</b>	<b>1,073</b>	<b>997</b>	<b>15.6</b>
Galway City	282	140	142	14.8
Galway County	708	348	360	16.9
Leitrim	122	63	59	16.0
Mayo	469	249	220	14.4
Roscommon	253	149	104	16.3
Sligo	236	124	112	14.7
<b>ULSTER (PART OF)</b>	<b>1,138</b>	<b>575</b>	<b>563</b>	<b>16.2</b>
Cavan	312	156	156	18.5
Donegal	589	296	293	15.2
Monaghan	237	123	114	16.1
<b>REGIONAL AUTHORITIES:</b>				
Border	1,999	1,040	959	16.1
Midland	1,227	651	576	18.2
West	1,712	886	826	15.9
Dublin	5,951	3,019	2,932	19.3
Mid-East	2,667	1,363	1,304	20.5
Mid-West	1,575	784	791	16.8
South-East	2,017	1,053	964	16.4
South-West	2,802	1,425	1,377	17.2

<sup>1</sup> Births per year per 1,000 population. Annual rates based on estimated 2010 population.

**Table 6 Births registered, classified by age of mother and previous number of liveborn children, January - March 2011**

Age of mother at maternity	Total	Previous number of liveborn children						
		0	1	2	3	4	5 or more	Not stated
<b>All ages</b>	<b>19,950</b>	<b>8,008</b>	<b>6,730</b>	<b>3,330</b>	<b>1,186</b>	<b>393</b>	<b>215</b>	<b>88</b>
15 and under	14	14	0	0	0	0	0	0
16	25	25	0	0	0	0	0	0
17	80	76	3	1	0	0	0	0
18	159	144	12	2	0	0	0	1
19	220	186	31	3	0	0	0	0
<b>Under 20</b>	<b>498</b>	<b>445</b>	<b>46</b>	<b>6</b>	<b>0</b>	<b>0</b>	<b>0</b>	<b>1</b>
20	322	252	57	11	0	1	0	1
21	345	235	90	15	2	1	0	2
22	376	252	98	22	2	0	0	2
23	485	291	134	44	13	0	2	1
24	518	286	179	39	12	2	0	0
<b>20-24</b>	<b>2,046</b>	<b>1,316</b>	<b>558</b>	<b>131</b>	<b>29</b>	<b>4</b>	<b>2</b>	<b>6</b>
25	602	288	208	69	24	8	0	5
26	735	366	245	86	23	11	2	2
27	964	483	307	114	37	10	4	9
28	1,014	482	353	124	33	12	6	4
29	1,175	543	403	136	58	20	10	5
<b>25-29</b>	<b>4,490</b>	<b>2,162</b>	<b>1,516</b>	<b>529</b>	<b>175</b>	<b>61</b>	<b>22</b>	<b>25</b>
30	1,346	616	462	176	61	18	10	3
31	1,442	592	537	202	75	15	14	7
32	1,514	615	536	239	85	22	12	5
33	1,443	526	538	260	74	28	10	7
34	1,363	407	541	286	73	36	15	5
<b>30-34</b>	<b>7,108</b>	<b>2,756</b>	<b>2,614</b>	<b>1,163</b>	<b>368</b>	<b>119</b>	<b>61</b>	<b>27</b>
35	1,221	289	476	295	106	29	16	10
36	1,163	268	437	297	101	31	26	3
37	940	228	320	251	104	23	14	0
38	831	166	271	230	115	28	16	5
39	615	119	185	181	78	38	11	3
<b>35-39</b>	<b>4,770</b>	<b>1,070</b>	<b>1,689</b>	<b>1,254</b>	<b>504</b>	<b>149</b>	<b>83</b>	<b>21</b>
40	400	87	117	111	43	19	19	4
41	272	72	81	63	25	15	16	0
42	153	36	49	34	19	7	7	1
43	89	18	27	21	12	8	1	2
44	57	18	16	8	6	6	3	0
<b>40-44</b>	<b>971</b>	<b>231</b>	<b>290</b>	<b>237</b>	<b>105</b>	<b>55</b>	<b>46</b>	<b>7</b>
<b>45 and over</b>	<b>62</b>	<b>26</b>	<b>14</b>	<b>10</b>	<b>5</b>	<b>5</b>	<b>1</b>	<b>1</b>
Age not stated	5	2	3	0	0	0	0	0

**Table 7 Number and percentage of births registered within and outside marriage, classified by age of mother, January - March 2011**

Age of mother at maternity	Total	Married parents	Unmarried Parents		% to married parents	% to unmarried parents	
			Total	Same address		Total	Same address
	Number				Percentage		
<b>All ages</b>	<b>19,950</b>	<b>13,182</b>	<b>6,768</b>	<b>3,622</b>	<b>66</b>	<b>34</b>	<b>18</b>
15 and under	14	0	14	2	0	100	14
16	25	1	24	3	4	96	12
17	80	7	73	12	9	91	15
18	159	17	142	18	11	89	11
19	220	21	199	45	10	90	20
<b>Under 20</b>	<b>498</b>	<b>46</b>	<b>452</b>	<b>80</b>	<b>9</b>	<b>91</b>	<b>16</b>
20	322	42	280	77	13	87	24
21	345	49	296	111	14	86	32
22	376	78	298	121	21	79	32
23	485	112	373	155	23	77	32
24	518	157	361	179	30	70	35
<b>20-24</b>	<b>2,046</b>	<b>438</b>	<b>1,608</b>	<b>643</b>	<b>21</b>	<b>79</b>	<b>31</b>
25	602	210	392	202	35	65	34
26	735	311	424	239	42	58	33
27	964	493	471	278	51	49	29
28	1,014	582	432	265	57	43	26
29	1,175	786	389	235	67	33	20
<b>25-29</b>	<b>4,490</b>	<b>2,382</b>	<b>2,108</b>	<b>1,219</b>	<b>53</b>	<b>47</b>	<b>27</b>
30	1,346	933	413	267	69	31	20
31	1,442	1,091	351	220	76	24	15
32	1,514	1,194	320	210	79	21	14
33	1,443	1,165	278	181	81	19	13
34	1,363	1,129	234	152	83	17	11
<b>30-34</b>	<b>7,108</b>	<b>5,512</b>	<b>1,596</b>	<b>1,030</b>	<b>78</b>	<b>22</b>	<b>14</b>
35	1,221	1,018	203	142	83	17	12
36	1,163	1,002	161	104	86	14	9
37	940	778	162	108	83	17	11
38	831	697	134	84	84	16	10
39	615	507	108	60	82	18	10
<b>35-39</b>	<b>4,770</b>	<b>4,002</b>	<b>768</b>	<b>498</b>	<b>84</b>	<b>16</b>	<b>10</b>
40	400	316	84	55	79	21	14
41	272	197	75	54	72	28	20
42	153	122	31	16	80	20	10
43	89	70	19	13	79	21	15
44	57	44	13	7	77	23	12
<b>40-44</b>	<b>971</b>	<b>749</b>	<b>222</b>	<b>145</b>	<b>77</b>	<b>23</b>	<b>15</b>
<b>45 and over</b>	<b>62</b>	<b>50</b>	<b>12</b>	<b>6</b>	<b>81</b>	<b>19</b>	<b>10</b>
Age not stated	5	3	2	1	60	40	20

**Table 8 Number and percentage of births registered within and outside marriage, classified by area of residence of mother, January - March 2011**

Area of residence	Total	Married parents	Unmarried Parents		% to married parents	% to unmarried parents	
			Total	Same address		Total	Same address
	Number				Percentage		
<b>STATE</b>	<b>19,950</b>	<b>13,182</b>	<b>6,768</b>	<b>3,622</b>	<b>66</b>	<b>34</b>	<b>18</b>
<b>LEINSTER</b>	<b>11,609</b>	<b>7,438</b>	<b>4,171</b>	<b>2,180</b>	<b>64</b>	<b>36</b>	<b>19</b>
Carlow	272	174	98	53	64	36	19
Dublin City	2,172	1,258	914	387	58	42	18
South Dublin	1,378	786	592	280	57	43	20
Fingal	1,602	1,075	527	270	67	33	17
Dun Laoghaire Rathdown	799	606	193	117	76	24	15
Kildare	1,088	743	345	203	68	32	19
Kilkenny	371	259	112	65	70	30	18
Laois	359	232	127	73	65	35	20
Longford	169	114	55	26	67	33	15
Louth	503	298	205	104	59	41	21
Meath	925	650	275	172	70	30	19
Offaly	302	206	96	59	68	32	20
Westmeath	397	259	138	89	65	35	22
Wexford	618	354	264	143	57	43	23
Wicklow	654	424	230	139	65	35	21
<b>MUNSTER</b>	<b>5,133</b>	<b>3,435</b>	<b>1,698</b>	<b>923</b>	<b>67</b>	<b>33</b>	<b>18</b>
Clare	455	320	135	82	70	30	18
Cork City	444	229	215	94	52	48	21
Cork County	1,812	1,320	492	305	73	27	17
Kerry	546	364	182	96	67	33	18
Limerick City	231	112	119	48	48	52	21
Limerick County	609	427	182	94	70	30	15
North Tipperary	280	200	80	53	71	29	19
South Tipperary	277	163	114	55	59	41	20
Waterford City	204	110	94	45	54	46	22
Waterford County	275	190	85	51	69	31	19
<b>CONNACHT</b>	<b>2,070</b>	<b>1,511</b>	<b>559</b>	<b>344</b>	<b>73</b>	<b>27</b>	<b>17</b>
Galway City	282	192	90	59	68	32	21
Galway County	708	541	167	109	76	24	15
Leitrim	122	96	26	14	79	21	11
Mayo	469	337	132	80	72	28	17
Roscommon	253	188	65	36	74	26	14
Sligo	236	157	79	46	67	33	19
<b>ULSTER (PART OF)</b>	<b>1,138</b>	<b>798</b>	<b>340</b>	<b>175</b>	<b>70</b>	<b>30</b>	<b>15</b>
Cavan	312	228	84	50	73	27	16
Donegal	589	403	186	84	68	32	14
Monaghan	237	167	70	41	70	30	17
<b>REGIONAL AUTHORITIES:</b>							
Border	1,999	1,349	650	339	67	33	17
Midland	1,227	811	416	247	66	34	20
West	1,712	1,258	454	284	73	27	17
Dublin	5,951	3,725	2,226	1,054	63	37	18
Mid-East	2,667	1,817	850	514	68	32	19
Mid-West	1,575	1,059	516	277	67	33	18
South-East	2,017	1,250	767	412	62	38	20
South-West	2,802	1,913	889	495	68	32	18

**Table 9 Births registered, classified by area of residence and age of mother, January - March 2011**

Area of residence	Total	Under 20	20-24	25-29	30-34	35-39	40 and over	Age not stated	Average age of mother at maternity	
									Total	First
<b>STATE</b>	<b>19,950</b>	<b>498</b>	<b>2,046</b>	<b>4,490</b>	<b>7,108</b>	<b>4,770</b>	<b>1,033</b>	<b>5</b>	<b>31.7</b>	<b>29.7</b>
<b>LEINSTER</b>	<b>11,609</b>	<b>315</b>	<b>1,251</b>	<b>2,644</b>	<b>4,038</b>	<b>2,760</b>	<b>599</b>	<b>2</b>	<b>31.6</b>	<b>29.6</b>
Carlow	272	6	34	68	86	64	14	0	31.3	28.6
Dublin City	2,172	72	288	479	701	498	134	0	31.4	29.6
South Dublin	1,378	47	178	345	455	293	60	0	30.9	28.9
Fingal	1,602	40	156	354	564	408	79	1	31.8	29.9
Dun Laoghaire Rathdown	799	5	40	132	292	270	60	0	33.6	32.2
Kildare	1,088	28	92	253	406	259	50	0	31.8	29.7
Kilkenny	371	11	37	76	136	91	20	0	31.8	29.2
Laois	359	17	35	89	130	71	17	0	31.1	29.2
Longford	169	5	15	41	53	44	11	0	31.9	29.9
Louth	503	17	65	138	163	105	15	0	30.6	28.1
Meath	925	17	70	213	334	238	53	0	32.2	30.0
Offaly	302	9	32	83	107	56	15	0	31.1	27.8
Westmeath	397	10	49	101	150	70	17	0	30.9	29.1
Wexford	618	23	86	156	205	128	19	1	30.7	28.3
Wicklow	654	8	74	116	256	165	35	0	32.1	30.0
<b>MUNSTER</b>	<b>5,133</b>	<b>110</b>	<b>506</b>	<b>1,121</b>	<b>1,925</b>	<b>1,215</b>	<b>254</b>	<b>2</b>	<b>31.8</b>	<b>29.8</b>
Clare	455	11	36	92	159	133	24	0	32.2	30.0
Cork City	444	21	72	123	144	74	10	0	29.9	28.9
Cork County	1,812	23	121	363	726	483	95	1	32.5	30.7
Kerry	546	13	54	122	213	110	34	0	31.6	29.9
Limerick City	231	14	42	64	74	29	8	0	29.4	27.7
Limerick County	609	11	60	123	242	143	30	0	31.9	29.6
North Tipperary	280	1	33	56	90	80	20	0	32.4	29.9
South Tipperary	277	6	41	63	89	60	17	1	31.2	28.6
Waterford City	204	5	29	61	76	27	6	0	30.3	28.3
Waterford County	275	5	18	54	112	76	10	0	32.3	30.2
<b>CONNACHT</b>	<b>2,070</b>	<b>42</b>	<b>167</b>	<b>433</b>	<b>743</b>	<b>552</b>	<b>132</b>	<b>1</b>	<b>32.3</b>	<b>30.3</b>
Galway City	282	6	22	76	96	65	17	0	31.8	30.3
Galway County	708	12	58	121	271	202	43	1	32.7	30.6
Leitrim	122	2	6	24	46	36	8	0	32.9	30.4
Mayo	469	8	36	100	164	129	32	0	32.5	30.7
Roscommon	253	7	15	56	100	57	18	0	32.2	29.8
Sligo	236	7	30	56	66	63	14	0	31.5	29.7
<b>ULSTER (PART OF)</b>	<b>1,138</b>	<b>31</b>	<b>122</b>	<b>292</b>	<b>402</b>	<b>243</b>	<b>48</b>	<b>0</b>	<b>31.2</b>	<b>28.7</b>
Cavan	312	4	31	81	118	65	13	0	31.5	28.8
Donegal	589	21	67	142	209	126	24	0	31.1	28.7
Monaghan	237	6	24	69	75	52	11	0	31.3	28.5
<b>REGIONAL AUTHORITIES:</b>										
Border	1,999	57	223	510	677	447	85	0	31.2	28.8
Midland	1,227	41	131	314	440	241	60	0	31.2	29.0
West	1,712	33	131	353	631	453	110	1	32.4	30.4
Dublin	5,951	164	662	1,310	2,012	1,469	333	1	31.7	29.9
Mid-East	2,667	53	236	582	996	662	138	0	32.0	29.9
Mid-West	1,575	37	171	335	565	385	82	0	31.7	29.5
South-East	2,017	56	245	478	704	446	86	2	31.2	28.8
South-West	2,802	57	247	608	1,083	667	139	1	31.9	30.2



**Table 10 Births registered outside marriage, classified by area of residence and age of mother, January - March 2011**

Area of residence	Total	Under 25	25-29	30-34	35-39	40 and over	Age not stated	Average age of mother at maternity	
								Total	First
<b>STATE</b>	<b>6,768</b>	<b>2,060</b>	<b>2,108</b>	<b>1,596</b>	<b>768</b>	<b>234</b>	<b>2</b>	<b>28.5</b>	<b>26.9</b>
<b>LEINSTER</b>	<b>4,171</b>	<b>1,278</b>	<b>1,273</b>	<b>984</b>	<b>486</b>	<b>150</b>	<b>0</b>	<b>28.5</b>	<b>27.0</b>
Carlow	98	31	33	21	12	1	0	28.0	25.9
Dublin City	914	293	266	200	115	40	0	28.6	27.0
South Dublin	592	183	191	136	66	16	0	28.2	26.8
Fingal	527	157	155	136	65	14	0	28.6	27.3
Dun Laoghaire Rathdown	193	33	57	63	27	13	0	30.6	30.4
Kildare	345	102	109	81	43	10	0	28.5	26.8
Kilkenny	112	43	38	20	6	5	0	27.3	25.5
Laois	127	43	33	33	12	6	0	28.2	25.3
Longford	55	12	18	14	9	2	0	29.5	27.9
Louth	205	68	68	48	18	3	0	27.7	26.1
Meath	275	73	89	56	44	13	0	29.1	27.0
Offaly	96	32	32	22	7	3	0	27.9	25.5
Westmeath	138	43	44	35	10	6	0	28.2	26.9
Wexford	264	87	80	65	27	5	0	28.1	26.3
Wicklow	230	78	60	54	25	13	0	28.8	27.4
<b>MUNSTER</b>	<b>1,698</b>	<b>517</b>	<b>561</b>	<b>406</b>	<b>165</b>	<b>48</b>	<b>1</b>	<b>28.3</b>	<b>26.8</b>
Clare	135	41	38	32	19	5	0	28.6	26.7
Cork City	215	84	64	47	16	4	0	27.2	26.0
Cork County	492	127	163	123	63	16	0	29.0	27.8
Kerry	182	49	59	48	17	9	0	28.9	26.7
Limerick City	119	45	38	28	4	4	0	27.1	25.4
Limerick County	182	58	71	35	14	4	0	27.8	25.9
North Tipperary	80	25	25	23	7	0	0	28.1	26.0
South Tipperary	114	41	38	28	4	2	1	27.3	26.0
Waterford City	94	29	36	22	5	2	0	27.7	26.5
Waterford County	85	18	29	20	16	2	0	29.5	27.9
<b>CONNACHT</b>	<b>559</b>	<b>150</b>	<b>170</b>	<b>127</b>	<b>86</b>	<b>25</b>	<b>1</b>	<b>29.1</b>	<b>27.4</b>
Galway City	90	13	30	23	17	7	0	30.8	29.6
Galway County	167	47	50	40	23	6	1	28.8	27.3
Leitrim	26	6	9	5	4	2	0	29.1	26.3
Mayo	132	31	37	34	26	4	0	29.8	27.7
Roscommon	65	22	14	15	10	4	0	28.6	26.4
Sligo	79	31	30	10	6	2	0	27.1	26.4
<b>ULSTER (PART OF)</b>	<b>340</b>	<b>115</b>	<b>104</b>	<b>79</b>	<b>31</b>	<b>11</b>	<b>0</b>	<b>27.9</b>	<b>25.6</b>
Cavan	84	21	32	23	5	3	0	28.6	25.8
Donegal	186	70	50	41	20	5	0	27.5	25.6
Monaghan	70	24	22	15	6	3	0	27.8	25.3
<b>REGIONAL AUTHORITIES:</b>									
Border	650	220	211	142	59	18	0	27.8	25.9
Midland	416	130	127	104	38	17	0	28.3	26.2
West	454	113	131	112	76	21	1	29.5	27.7
Dublin	2,226	666	669	535	273	83	0	28.7	27.3
Mid-East	850	253	258	191	112	36	0	28.8	27.1
Mid-West	516	169	172	118	44	13	0	27.9	26.0
South-East	767	249	254	176	70	17	1	27.9	26.3
South-West	889	260	286	218	96	29	0	28.5	27.2

**Table 11 Births registered, classified by nationality of mother, marital status and age, January - March 2011**

Nationality of mother	Total births	% of total births	% of births outside marriage	Average age
<b>TOTAL</b>	<b>19,950</b>	<b>100.0</b>	<b>33.9</b>	<b>31.7</b>
Ireland	15,498	77.7	34.2	32.1
United Kingdom	436	2.2	47.5	31.8
EU15 excl. Irl & UK	277	1.4	39.4	33.4
Accession states (EU27 excl. EU15)	2,068	10.4	38.4	28.9
Other	1,541	7.7	20.1	31.3
Not stated	130	0.7	38.5	31.1

**Table 12 Deaths registered by county of residence of deceased, January - March 2011**

Area of residence	Total	Male	Female	Rate <sup>1</sup>
<b>STATE</b>	<b>7,651</b>	<b>3,882</b>	<b>3,769</b>	<b>6.8</b>
<b>LEINSTER</b>	<b>3,820</b>	<b>1,841</b>	<b>1,979</b>	<b>6.3</b>
Carlow	98	53	45	7.4
Dublin City	1,136	515	621	8.5
South Dublin	257	130	127	3.9
Fingal	198	107	91	3.1
Dun Laoghaire Rathdown	358	176	182	7.0
Kildare	238	112	126	4.8
Kilkenny	166	85	81	7.2
Laois	120	64	56	6.8
Longford	74	31	43	8.2
Louth	207	101	106	7.1
Meath	232	102	130	5.4
Offaly	132	69	63	7.1
Westmeath	139	70	69	6.6
Wexford	263	127	136	7.6
Wicklow	202	99	103	6.1
<b>MUNSTER</b>	<b>2,271</b>	<b>1,198</b>	<b>1,073</b>	<b>7.3</b>
Clare	212	115	97	7.2
Cork City	280	136	144	8.9
Cork County	556	291	265	5.8
Kerry	296	153	143	8.0
Limerick City	135	77	58	8.6
Limerick County	240	139	101	7.3
North Tipperary	166	93	73	9.5
South Tipperary	158	74	84	7.2
Waterford City	110	62	48	9.1
Waterford County	118	58	60	7.2
<b>CONNACHT</b>	<b>994</b>	<b>543</b>	<b>451</b>	<b>7.5</b>
Galway City	88	47	41	4.6
Galway County	293	157	136	7.0
Leitrim	69	45	24	9.0
Mayo	272	147	125	8.3
Roscommon	141	80	61	9.1
Sligo	131	67	64	8.2
<b>ULSTER (PART OF)</b>	<b>566</b>	<b>300</b>	<b>266</b>	<b>8.0</b>
Cavan	150	74	76	8.9
Donegal	304	163	141	7.8
Monaghan	112	63	49	7.6
<b>REGIONAL AUTHORITIES:</b>				
Border	973	513	460	7.8
Midland	465	234	231	6.9
West	794	431	363	7.4
Dublin	1,949	928	1,021	6.3
Mid-East	672	313	359	5.2
Mid-West	753	424	329	8.0
South-East	913	459	454	7.4
South-West	1,132	580	552	6.9

<sup>1</sup> Deaths per year per 1,000 population. Annual rates based on estimated 2010 population.

**Table 13 Deaths registered by cause of death and county of residence of deceased, January - March 2011**

Area of residence	Total deaths	Malignant Neoplasms	Diseases of the Circulatory system	Diseases of the Respiratory system	External causes	All other causes
<b>STATE</b>	<b>7,651</b>	<b>2,143</b>	<b>2,612</b>	<b>1,026</b>	<b>358</b>	<b>1,512</b>
<b>LEINSTER</b>	<b>3,820</b>	<b>1,091</b>	<b>1,264</b>	<b>511</b>	<b>181</b>	<b>773</b>
Carlow	98	34	27	19	2	16
Dublin City	1,136	338	373	143	44	238
South Dublin	257	81	73	34	19	50
Fingal	198	60	62	23	9	44
Dun Laoghaire Rathdown	358	110	113	47	20	68
Kildare	238	64	82	36	11	45
Kilkenny	166	41	67	19	7	32
Laois	120	23	38	18	15	26
Longford	74	23	22	19		10
Louth	207	54	81	23	3	46
Meath	232	63	78	36	6	49
Offaly	132	34	46	18	7	27
Westmeath	139	39	45	12	7	36
Wexford	263	73	90	42	18	40
Wicklow	202	54	67	22	13	46
<b>MUNSTER</b>	<b>2,271</b>	<b>616</b>	<b>804</b>	<b>301</b>	<b>115</b>	<b>435</b>
Clare	212	55	80	31	12	34
Cork City	280	83	83	37	15	62
Cork County	556	167	195	59	27	108
Kerry	296	83	113	39	15	46
Limerick City	135	36	46	20	11	22
Limerick County	240	58	88	44	9	41
North Tipperary	166	38	68	22	8	30
South Tipperary	158	38	57	23	10	30
Waterford City	110	24	39	14	2	31
Waterford County	118	34	35	12	6	31
<b>CONNACHT</b>	<b>994</b>	<b>280</b>	<b>327</b>	<b>145</b>	<b>46</b>	<b>196</b>
Galway City	88	34	22	14	4	14
Galway County	293	70	107	43	9	64
Leitrim	69	19	21	10	3	16
Mayo	272	83	86	40	17	46
Roscommon	141	38	51	21	7	24
Sligo	131	36	40	17	6	32
<b>ULSTER (PART OF)</b>	<b>566</b>	<b>156</b>	<b>217</b>	<b>69</b>	<b>16</b>	<b>108</b>
Cavan	150	43	60	14	6	27
Donegal	304	83	109	42	7	63
Monaghan	112	30	48	13	3	18
<b>REGIONAL AUTHORITIES:</b>						
Border	973	265	359	119	28	202
Midland	465	119	151	67	29	99
West	794	225	266	118	37	148
Dublin	1,949	589	621	247	92	400
Mid-East	672	181	227	94	30	140
Mid-West	753	187	282	117	40	127
South-East	913	244	315	129	45	180
South-West	1,132	333	391	135	57	216

**Table 14 Deaths registered classified by cause and age group, January - March 2011**

Cause of Death	65 COD Code	ICD-10 Code	Total Deaths	Age Group										
				Under 1	1-4	5-14	15-24	25-34	35-44	45-54	55-64	65-74	75-84	85 and over
<b>Total deaths</b>	<b>0</b>	<b>A00-Y89</b>	<b>7,651</b>	<b>67</b>	<b>7</b>	<b>16</b>	<b>59</b>	<b>113</b>	<b>173</b>	<b>350</b>	<b>777</b>	<b>1,288</b>	<b>2,272</b>	<b>2,529</b>
<b>Infectious and parasitic diseases:-</b>	<b>1</b>	<b>A00-B99</b>	<b>69</b>	<b>0</b>	<b>0</b>	<b>0</b>	<b>0</b>	<b>2</b>	<b>4</b>	<b>4</b>	<b>4</b>	<b>9</b>	<b>27</b>	<b>19</b>
Tuberculosis	2	A15-A19,B90	6	0	0	0	0	0	0	0	0	4	0	2
Meningococcal infection	3	A39	1	0	0	0	0	0	1	0	0	0	0	0
AIDS (HIV Disease)	4	B20-B24	2	0	0	0	0	1	1	0	0	0	0	0
Viral Hepatitis	5	B15-B19	5	0	0	0	0	1	1	2	1	0	0	0
Other infectious and parasitic diseases			55	0	0	0	0	0	1	2	3	5	27	17
<b>Neoplasms</b>	<b>6</b>	<b>C00-D48</b>	<b>2,183</b>	<b>0</b>	<b>2</b>	<b>8</b>	<b>1</b>	<b>22</b>	<b>59</b>	<b>132</b>	<b>350</b>	<b>564</b>	<b>656</b>	<b>389</b>
<b>Malignant Neoplasms of the:-</b>	<b>7</b>	<b>C00-C97</b>	<b>2,143</b>	<b>0</b>	<b>1</b>	<b>8</b>	<b>1</b>	<b>22</b>	<b>59</b>	<b>132</b>	<b>347</b>	<b>560</b>	<b>641</b>	<b>372</b>
Lip, oral cavity, pharynx	8	C00-C14	38	0	0	0	0	0	0	3	15	5	10	5
Oesophagus	9	C15	89	0	0	0	0	1	2	6	17	30	28	5
Stomach	10	C16	83	0	0	0	0	2	2	3	7	26	28	15
Colon	11	C18	128	0	0	0	0	1	0	5	11	30	49	32
Rectum and anus	12	C19-C21	114	0	0	0	0	0	3	7	22	30	36	16
Liver and the intrahepatic bile ducts	13	C22	65	0	0	0	0	1	1	5	8	19	20	11
Pancreas	14	C25	101	0	0	0	0	0	1	7	15	32	33	13
Larynx and trachea/bronchus /lung	15	C32-C34	508	0	0	1	0	0	6	34	102	163	141	61
Skin	16	C43	35	0	0	0	0	3	3	3	5	8	8	5
Breast	17	C50	159	0	0	0	0	2	15	18	29	27	31	37
Cervix uteri	18	C53	26	0	0	0	0	2	4	4	8	6	1	1
Other parts of uterus	19	C54-C55	44	0	0	0	0	0	1	3	10	9	13	8
Ovary	20	C56	74	0	0	0	0	0	3	4	10	28	22	7
Prostate	21	C61	134	0	0	0	0	0	0	4	6	28	56	40
Kidney	22	C64	47	0	0	0	0	0	1	3	5	13	15	10
Bladder	23	C67	42	0	0	0	0	0	4	1	4	7	14	12
Lymph/haematopoietic tissue	24	C81-C96	163	0	0	2	1	2	5	8	23	31	61	30
Other malignant neoplasms			293	0	1	5	0	8	8	14	50	68	75	64
<b>Diseases of the blood and blood-forming organs, immunological disorders</b>	<b>25</b>	<b>D50-D89</b>	<b>16</b>	<b>0</b>	<b>0</b>	<b>0</b>	<b>0</b>	<b>0</b>	<b>1</b>	<b>2</b>	<b>3</b>	<b>3</b>	<b>2</b>	<b>5</b>
<b>Endocrine, Nutritional and metabolic diseases</b>	<b>26</b>	<b>E00-E90</b>	<b>164</b>	<b>0</b>	<b>0</b>	<b>1</b>	<b>3</b>	<b>4</b>	<b>5</b>	<b>7</b>	<b>13</b>	<b>22</b>	<b>55</b>	<b>54</b>
Diabetes mellitus	27	E10-E14	116	0	0	0	0	1	3	1	10	17	45	39
<b>Mental and behavioural disorders</b>	<b>28</b>	<b>F00-F99</b>	<b>222</b>	<b>0</b>	<b>0</b>	<b>0</b>	<b>0</b>	<b>0</b>	<b>0</b>	<b>0</b>	<b>3</b>	<b>11</b>	<b>70</b>	<b>138</b>
<b>Diseases of the nervous system and the sense organs</b>	<b>31</b>	<b>G00-H95</b>	<b>339</b>	<b>2</b>	<b>0</b>	<b>3</b>	<b>2</b>	<b>7</b>	<b>8</b>	<b>8</b>	<b>28</b>	<b>46</b>	<b>114</b>	<b>121</b>
Meningitis	32	G00-G03	2	0	0	0	0	0	0	0	1	0	0	1
<b>Diseases of the Circulatory System:-</b>	<b>33</b>	<b>I00-I99</b>	<b>2,612</b>	<b>0</b>	<b>0</b>	<b>1</b>	<b>3</b>	<b>12</b>	<b>24</b>	<b>94</b>	<b>210</b>	<b>395</b>	<b>805</b>	<b>1,068</b>
Ischaemic heart disease	34	I20-I25	1,324	0	0	0	0	1	9	45	132	228	421	488
of which: (Acute myocardial infarction)		I21	607	0	0	0	0	0	2	17	45	91	228	224
Other heart disease	35	I30-I33,I39-I52	381	0	0	1	0	3	5	16	21	47	93	195
Cerebrovascular disease	36	I60-I69	571	0	0	0	2	4	4	20	30	65	190	256
Other diseases of circulatory system			336	0	0	0	1	4	6	13	27	55	101	129

<b>Diseases of the Respiratory system</b>	<b>37</b>	<b>J00-J99</b>	<b>1,026</b>	<b>0</b>	<b>0</b>	<b>0</b>	<b>0</b>	<b>3</b>	<b>4</b>	<b>19</b>	<b>62</b>	<b>124</b>	<b>356</b>	<b>458</b>
Influenza	38	J10-J11	5	0	0	0	0	2	0	0	2	0	1	0
Pneumonia	39	J12-J19	353	0	0	0	0	1	4	7	12	19	103	207
Chronic Lower respiratory disease of which: <i>Asthma</i>	40	J40-J47	424	0	0	0	0	0	0	8	33	80	165	138
Other diseases of the respiratory system	41	J45-J46	20	0	0	0	0	0	0	0	2	2	6	10
			244	0	0	0	0	0	0	4	15	25	87	113
<b>Diseases of the Digestive system</b>	<b>42</b>	<b>K00-K93</b>	<b>296</b>	<b>0</b>	<b>1</b>	<b>0</b>	<b>1</b>	<b>2</b>	<b>17</b>	<b>25</b>	<b>40</b>	<b>52</b>	<b>73</b>	<b>85</b>
Ulcer of stomach, duodenum and jejunum	43	K25-K28	21	0	0	0	0	0	3	1	3	4	7	3
Chronic liver disease	44	K70,K73-K74	63	0	0	0	0	0	8	14	22	10	7	2
Other diseases of the digestive system			212	0	1	0	1	2	6	10	15	38	59	80
<b>Diseases of the skin and subcutaneous tissue</b>	<b>45</b>	<b>L00-L99</b>	<b>10</b>	<b>0</b>	<b>0</b>	<b>0</b>	<b>0</b>	<b>0</b>	<b>0</b>	<b>0</b>	<b>1</b>	<b>0</b>	<b>2</b>	<b>7</b>
<b>Diseases of the musculoskeletal system/connective tissue</b>	<b>46</b>	<b>M00-M99</b>	<b>43</b>	<b>0</b>	<b>0</b>	<b>0</b>	<b>0</b>	<b>1</b>	<b>0</b>	<b>2</b>	<b>1</b>	<b>8</b>	<b>15</b>	<b>16</b>
Rheumatoid arthritis and osteoarthritis	47	M05-M06,M15-M19	20	0	0	0	0	0	0	1	0	5	5	9
<b>Diseases of the genitourinary system</b>	<b>48</b>	<b>N00-N99</b>	<b>204</b>	<b>0</b>	<b>0</b>	<b>0</b>	<b>0</b>	<b>0</b>	<b>2</b>	<b>1</b>	<b>4</b>	<b>18</b>	<b>65</b>	<b>114</b>
Diseases of the kidney and ureter	49	N00-N29	134	0	0	0	0	0	2	1	3	16	47	65
<b>Complications of pregnancy, childbirth and puerperium</b>	<b>50</b>	<b>O00-O99</b>	<b>0</b>	<b>0</b>	<b>0</b>	<b>0</b>	<b>0</b>	<b>0</b>	<b>0</b>	<b>0</b>	<b>0</b>	<b>0</b>	<b>0</b>	<b>0</b>
<b>Certain conditions originating in the perinatal period<sup>1</sup></b>	<b>51</b>	<b>P00-P96</b>	<b>29</b>	<b>29</b>	<b>0</b>	<b>0</b>	<b>0</b>	<b>0</b>	<b>0</b>	<b>0</b>	<b>0</b>	<b>0</b>	<b>0</b>	<b>0</b>
<b>Congenital malformations and chromosomal abnormalities</b>	<b>52</b>	<b>Q00-Q99</b>	<b>56</b>	<b>32</b>	<b>2</b>	<b>3</b>	<b>1</b>	<b>3</b>	<b>5</b>	<b>5</b>	<b>3</b>	<b>1</b>	<b>1</b>	<b>0</b>
Congenital malformations of the:-														
Nervous system	53	Q00-Q07	12	6	0	2	1	2	1	0	0	0	0	0
Circulatory system	54	Q20-Q28	14	10	1	1	0	0	1	1	0	0	0	0
<b>Symptoms, signs, abnormal findings, ill-defined causes</b>	<b>55</b>	<b>R00-R99</b>	<b>24</b>	<b>3</b>	<b>0</b>	<b>0</b>	<b>2</b>	<b>1</b>	<b>0</b>	<b>1</b>	<b>2</b>	<b>2</b>	<b>2</b>	<b>11</b>
Sudden infant death syndrome	56	R95	3	3	0	0	0	0	0	0	0	0	0	0
Unknown and unspecified causes	57	R96-R99	6	0	0	0	2	1	0	1	0	1	0	1
<b>External causes of injury and poisoning</b>	<b>58</b>	<b>V01-Y89</b>	<b>358</b>	<b>1</b>	<b>2</b>	<b>0</b>	<b>46</b>	<b>56</b>	<b>44</b>	<b>50</b>	<b>53</b>	<b>33</b>	<b>29</b>	<b>44</b>
Accidents	59	V01-X59	219	0	2	0	18	29	19	25	31	27	26	42
of which: <i>Transport accidents</i>	60	V01-V99	47	0	0	0	10	11	4	4	7	6	3	2
<i>Accidental falls</i>	61	W00-W19	67	0	1	0	0	6	3	3	11	6	12	25
<i>Accidental poisoning</i>	62	X40-X49	44	0	0	0	8	9	8	10	7	1	1	0
<i>other accidents</i>			61	0	1	0	0	3	4	8	6	14	10	15
Suicide and intentional self harm	63	X60-X84	95	0	0	0	17	20	20	22	13	2	1	0
Homicide/assault	64	X85-Y09	8	0	0	0	5	3	0	0	0	0	0	0
Events of undetermined intent	65	Y10-Y34	26	0	0	0	6	4	5	3	5	3	0	0
All other external causes			10	1	0	0	0	0	0	0	4	1	2	2

<sup>1</sup> Stillbirths not included.

**Table 15 Male deaths registered classified by cause and age group, January - March 2011**

Cause of Death	65 COD Code	ICD-10 Code	Total Males	Age Group										
				Under 1	1-4	5-14	15-24	25-34	35-44	45-54	55-64	65-74	75-84	85 and over
<b>Total Male Deaths</b>	<b>0</b>	<b>A00-Y89</b>	<b>3,882</b>	<b>41</b>	<b>4</b>	<b>11</b>	<b>46</b>	<b>88</b>	<b>95</b>	<b>207</b>	<b>483</b>	<b>804</b>	<b>1,215</b>	<b>888</b>
<b>Infectious and parasitic diseases:-</b>	<b>1</b>	<b>A00-B99</b>	<b>26</b>	<b>0</b>	<b>0</b>	<b>0</b>	<b>0</b>	<b>2</b>	<b>3</b>	<b>2</b>	<b>1</b>	<b>7</b>	<b>6</b>	<b>5</b>
Tuberculosis	2	A15-A19,B90	4	0	0	0	0	0	0	0	0	4	0	0
Meningococcal infection	3	A39	1	0	0	0	0	0	1	0	0	0	0	0
AIDS (HIV Disease)	4	B20-B24	2	0	0	0	0	1	1	0	0	0	0	0
Viral Hepatitis	5	B15-B19	2	0	0	0	0	1	1	0	0	0	0	0
Other infectious and parasitic diseases			17	0	0	0	0	0	0	2	1	3	6	5
<b>Neoplasms</b>	<b>6</b>	<b>C00-D48</b>	<b>1,145</b>	<b>0</b>	<b>1</b>	<b>6</b>	<b>0</b>	<b>15</b>	<b>18</b>	<b>59</b>	<b>189</b>	<b>330</b>	<b>353</b>	<b>174</b>
<b>Malignant Neoplasms of the:-</b>	<b>7</b>	<b>C00-C97</b>	<b>1,119</b>	<b>0</b>	<b>1</b>	<b>6</b>	<b>0</b>	<b>15</b>	<b>18</b>	<b>59</b>	<b>187</b>	<b>328</b>	<b>342</b>	<b>163</b>
Lip, oral cavity, pharynx	8	C00-C14	28	0	0	0	0	0	0	1	12	5	9	1
Oesophagus	9	C15	57	0	0	0	0	1	1	3	14	21	17	0
Stomach	10	C16	52	0	0	0	0	2	1	3	3	20	17	6
Colon	11	C18	58	0	0	0	0	0	0	2	4	19	20	13
Rectum and anus	12	C19-C21	76	0	0	0	0	0	2	4	16	24	24	6
Liver and the intrahepatic bile ducts	13	C22	38	0	0	0	0	1	0	4	3	14	13	3
Pancreas	14	C25	53	0	0	0	0	0	0	6	10	20	12	5
Larynx and trachea/bronchus /lung	15	C32-C34	303	0	0	1	0	0	3	18	68	103	77	33
Skin	16	C43	22	0	0	0	0	3	1	2	3	6	4	3
Breast	17	C50	3	0	0	0	0	0	2	0	0	1	0	0
Cervix uteri	18	C53	0	0	0	0	0	0	0	0	0	0	0	0
Other parts of uterus	19	C54-C55	0	0	0	0	0	0	0	0	0	0	0	0
Ovary	20	C56	0	0	0	0	0	0	0	0	0	0	0	0
Prostate	21	C61	134	0	0	0	0	0	0	4	6	28	56	40
Kidney	22	C64	34	0	0	0	0	0	0	1	5	10	11	7
Bladder	23	C67	25	0	0	0	0	0	1	1	4	4	9	6
Lymph/haematopoietic tissue	24	C81-C96	91	0	0	2	0	1	3	5	13	18	39	10
Other malignant neoplasms			145	0	1	3	0	7	4	5	26	35	34	30
<b>Diseases of the blood and blood-forming organs, immunological disorders</b>	<b>25</b>	<b>D50-D89</b>	<b>6</b>	<b>0</b>	<b>0</b>	<b>0</b>	<b>0</b>	<b>0</b>	<b>0</b>	<b>0</b>	<b>1</b>	<b>1</b>	<b>2</b>	<b>2</b>
<b>Endocrine, Nutritional and metabolic diseases</b>	<b>26</b>	<b>E00-E90</b>	<b>82</b>	<b>0</b>	<b>0</b>	<b>0</b>	<b>0</b>	<b>3</b>	<b>1</b>	<b>5</b>	<b>9</b>	<b>15</b>	<b>32</b>	<b>17</b>
Diabetes mellitus	27	E10-E14	58	0	0	0	0	1	1	0	7	12	26	11
<b>Mental and behavioural disorders</b>	<b>28</b>	<b>F00-F99</b>	<b>69</b>	<b>0</b>	<b>0</b>	<b>0</b>	<b>0</b>	<b>0</b>	<b>0</b>	<b>0</b>	<b>2</b>	<b>5</b>	<b>29</b>	<b>33</b>
<b>Diseases of the nervous system and the sense organs</b>	<b>31</b>	<b>G00-H95</b>	<b>155</b>	<b>2</b>	<b>0</b>	<b>3</b>	<b>1</b>	<b>4</b>	<b>6</b>	<b>6</b>	<b>16</b>	<b>27</b>	<b>55</b>	<b>35</b>
Meningitis	32	G00-G03	0	0	0	0	0	0	0	0	0	0	0	0
<b>Diseases of the Circulatory System:-</b>	<b>33</b>	<b>I00-I99</b>	<b>1,311</b>	<b>0</b>	<b>0</b>	<b>1</b>	<b>1</b>	<b>8</b>	<b>16</b>	<b>59</b>	<b>161</b>	<b>257</b>	<b>450</b>	<b>358</b>
Ischaemic heart disease	34	I20-I25	741	0	0	0	0	0	9	37	109	166	252	168
of which: (Acute myocardial infarction)		I21	340	0	0	0	0	0	2	13	35	68	140	82
Other heart disease	35	I30-I33,I39-I52	167	0	0	1	0	3	2	7	18	25	50	61
Cerebrovascular disease	36	I60-I69	249	0	0	0	1	3	1	10	15	32	100	87
Other diseases of circulatory system			154	0	0	0	0	2	4	5	19	34	48	42

<b>Diseases of the Respiratory system</b>	<b>37</b>	<b>J00-J99</b>	<b>502</b>	<b>0</b>	<b>0</b>	<b>0</b>	<b>0</b>	<b>2</b>	<b>3</b>	<b>14</b>	<b>38</b>	<b>86</b>	<b>198</b>	<b>161</b>
Influenza	38	J10-J11	3	0	0	0	0	1	0	0	1	0	1	0
Pneumonia	39	J12-J19	140	0	0	0	0	1	3	4	6	14	57	55
Chronic Lower respiratory disease	40	J40-J47	228	0	0	0	0	0	0	6	18	52	89	63
of which: Asthma	41	J45-J46	6	0	0	0	0	0	0	0	1	0	3	2
Other diseases of the respiratory system			131	0	0	0	0	0	0	4	13	20	51	43
<b>Diseases of the Digestive system</b>	<b>42</b>	<b>K00-K93</b>	<b>144</b>	<b>0</b>	<b>0</b>	<b>0</b>	<b>1</b>	<b>1</b>	<b>11</b>	<b>16</b>	<b>22</b>	<b>31</b>	<b>33</b>	<b>29</b>
Ulcer of stomach, duodenum and jejunum	43	K25-K28	11	0	0	0	0	0	2	1	2	2	3	1
Chronic liver disease	44	K70,K73-K74	35	0	0	0	0	0	3	6	12	8	5	1
Other diseases of the digestive system			98	0	0	0	1	1	6	9	8	21	25	27
<b>Diseases of the skin and subcutaneous tissue</b>	<b>45</b>	<b>L00-L99</b>	<b>4</b>	<b>0</b>	<b>0</b>	<b>0</b>	<b>0</b>	<b>0</b>	<b>0</b>	<b>0</b>	<b>0</b>	<b>0</b>	<b>0</b>	<b>4</b>
<b>Diseases of the musculoskeletal system/connective tissue</b>	<b>46</b>	<b>M00-M99</b>	<b>13</b>	<b>0</b>	<b>0</b>	<b>0</b>	<b>0</b>	<b>0</b>	<b>0</b>	<b>1</b>	<b>0</b>	<b>6</b>	<b>3</b>	<b>3</b>
Rheumatoid arthritis and osteoarthritis	47	M05-M06,M15-M19	8	0	0	0	0	0	0	0	0	3	3	2
<b>Diseases of the genitourinary system</b>	<b>48</b>	<b>N00-N99</b>	<b>91</b>	<b>0</b>	<b>0</b>	<b>0</b>	<b>0</b>	<b>0</b>	<b>1</b>	<b>0</b>	<b>3</b>	<b>11</b>	<b>35</b>	<b>41</b>
Diseases of the kidney and ureter	49	N00-N29	65	0	0	0	0	0	1	0	3	10	27	24
<b>Complications of pregnancy, childbirth and puerperium</b>	<b>50</b>	<b>O00-O99</b>	<b>0</b>	<b>0</b>	<b>0</b>	<b>0</b>	<b>0</b>	<b>0</b>	<b>0</b>	<b>0</b>	<b>0</b>	<b>0</b>	<b>0</b>	<b>0</b>
<b>Certain conditions originating in the perinatal period<sup>1</sup></b>	<b>51</b>	<b>P00-P96</b>	<b>19</b>	<b>19</b>	<b>0</b>	<b>0</b>	<b>0</b>	<b>0</b>	<b>0</b>	<b>0</b>	<b>0</b>	<b>0</b>	<b>0</b>	<b>0</b>
<b>Congenital malformations and chromosomal abnormalities</b>	<b>52</b>	<b>Q00-Q99</b>	<b>28</b>	<b>16</b>	<b>2</b>	<b>1</b>	<b>1</b>	<b>1</b>	<b>2</b>	<b>3</b>	<b>1</b>	<b>1</b>	<b>0</b>	<b>0</b>
Congenital malformations of the:-														
Nervous system	53	Q00-Q07	6	3	0	1	1	1	0	0	0	0	0	0
Circulatory system	54	Q20-Q28	6	4	1	0	0	0	0	1	0	0	0	0
<b>Symptoms, signs, abnormal findings, ill-defined causes</b>	<b>55</b>	<b>R00-R99</b>	<b>15</b>	<b>3</b>	<b>0</b>	<b>0</b>	<b>2</b>	<b>1</b>	<b>0</b>	<b>1</b>	<b>1</b>	<b>2</b>	<b>1</b>	<b>4</b>
Sudden infant death syndrome	56	R95	3	3	0	0	0	0	0	0	0	0	0	0
Unknown and unspecified causes	57	R96-R99	5	0	0	0	2	1	0	1	0	1	0	0
<b>External causes of injury and poisoning</b>	<b>58</b>	<b>V01-Y89</b>	<b>272</b>	<b>1</b>	<b>1</b>	<b>0</b>	<b>40</b>	<b>51</b>	<b>34</b>	<b>41</b>	<b>39</b>	<b>25</b>	<b>18</b>	<b>22</b>
Accidents	59	V01-X59	154	0	1	0	14	25	16	21	19	21	15	22
of which: Transport accidents	60	V01-V99	35	0	0	0	7	9	4	3	5	4	2	1
Accidental falls	61	W00-W19	40	0	1	0	0	6	1	3	8	3	6	12
Accidental poisoning	62	X40-X49	32	0	0	0	7	7	8	8	1	1	0	0
other accidents			47	0	0	0	0	3	3	7	5	13	7	9
Suicide and intentional self harm	63	X60-X84	82	0	0	0	15	20	14	18	12	2	1	0
Homicide/assault	64	X85-Y09	8	0	0	0	5	3	0	0	0	0	0	0
Events of undetermined intent	65	Y10-Y34	21	0	0	0	6	3	4	2	4	2	0	0
All other external causes			7	1	0	0	0	0	0	0	4	0	2	0

<sup>1</sup> Stillbirths not included.

**Table 16 Female deaths registered classified by cause and age group, January - March 2011**

Cause of Death	65 COD Code	ICD-10 Code	Total Females	Age Group										
				Under 1	1-4	5-14	15-24	25-34	35-44	45-54	55-64	65-74	75-84	85 and over
<b>Total Female Deaths</b>	<b>0</b>	<b>A00-Y89</b>	<b>3,769</b>	<b>26</b>	<b>3</b>	<b>5</b>	<b>13</b>	<b>25</b>	<b>78</b>	<b>143</b>	<b>294</b>	<b>484</b>	<b>1,057</b>	<b>1,641</b>
<b>Infectious and parasitic diseases:-</b>	<b>1</b>	<b>A00-B99</b>	<b>43</b>	<b>0</b>	<b>0</b>	<b>0</b>	<b>0</b>	<b>0</b>	<b>1</b>	<b>2</b>	<b>3</b>	<b>2</b>	<b>21</b>	<b>14</b>
Tuberculosis	2	A15-A19,B90	2	0	0	0	0	0	0	0	0	0	0	2
Meningococcal infection	3	A39	0	0	0	0	0	0	0	0	0	0	0	0
AIDS (HIV Disease)	4	B20-B24	0	0	0	0	0	0	0	0	0	0	0	0
Viral Hepatitis	5	B15-B19	3	0	0	0	0	0	0	2	1	0	0	0
Other infectious and parasitic diseases			38	0	0	0	0	0	1	0	2	2	21	12
<b>Neoplasms</b>	<b>6</b>	<b>C00-D48</b>	<b>1,038</b>	<b>0</b>	<b>1</b>	<b>2</b>	<b>1</b>	<b>7</b>	<b>41</b>	<b>73</b>	<b>161</b>	<b>234</b>	<b>303</b>	<b>215</b>
<b>Malignant Neoplasms of the:-</b>	<b>7</b>	<b>C00-C97</b>	<b>1,024</b>	<b>0</b>	<b>0</b>	<b>2</b>	<b>1</b>	<b>7</b>	<b>41</b>	<b>73</b>	<b>160</b>	<b>232</b>	<b>299</b>	<b>209</b>
Lip, oral cavity, pharynx	8	C00-C14	10	0	0	0	0	0	0	2	3	0	1	4
Oesophagus	9	C15	32	0	0	0	0	0	1	3	3	9	11	5
Stomach	10	C16	31	0	0	0	0	0	1	0	4	6	11	9
Colon	11	C18	70	0	0	0	0	1	0	3	7	11	29	19
Rectum and anus	12	C19-C21	38	0	0	0	0	0	1	3	6	6	12	10
Liver and the intrahepatic bile ducts	13	C22	27	0	0	0	0	0	1	1	5	5	7	8
Pancreas	14	C25	48	0	0	0	0	0	1	1	5	12	21	8
Larynx and trachea/bronchus /lung	15	C32-C34	205	0	0	0	0	0	3	16	34	60	64	28
Skin	16	C43	13	0	0	0	0	0	2	1	2	2	4	2
Breast	17	C50	156	0	0	0	0	2	13	18	29	26	31	37
Cervix uteri	18	C53	26	0	0	0	0	2	4	4	8	6	1	1
Other parts of uterus	19	C54-C55	44	0	0	0	0	0	1	3	10	9	13	8
Ovary	20	C56	74	0	0	0	0	0	3	4	10	28	22	7
Prostate	21	C61	0	0	0	0	0	0	0	0	0	0	0	0
Kidney	22	C64	13	0	0	0	0	0	1	2	0	3	4	3
Bladder	23	C67	17	0	0	0	0	0	3	0	0	3	5	6
Lymph/haematopoietic tissue	24	C81-C96	72	0	0	0	1	1	2	3	10	13	22	20
Other malignant neoplasms			148	0	0	2	0	1	4	9	24	33	41	34
<b>Diseases of the blood and blood-forming organs, immunological disorders</b>	<b>25</b>	<b>D50-D89</b>	<b>10</b>	<b>0</b>	<b>0</b>	<b>0</b>	<b>0</b>	<b>0</b>	<b>1</b>	<b>2</b>	<b>2</b>	<b>2</b>	<b>0</b>	<b>3</b>
<b>Endocrine, Nutritional and metabolic diseases</b>	<b>26</b>	<b>E00-E90</b>	<b>82</b>	<b>0</b>	<b>0</b>	<b>1</b>	<b>3</b>	<b>1</b>	<b>4</b>	<b>2</b>	<b>4</b>	<b>7</b>	<b>23</b>	<b>37</b>
Diabetes mellitus	27	E10-E14	58	0	0	0	0	0	2	1	3	5	19	28
<b>Mental and behavioural disorders</b>	<b>28</b>	<b>F00-F99</b>	<b>153</b>	<b>0</b>	<b>0</b>	<b>0</b>	<b>0</b>	<b>0</b>	<b>0</b>	<b>0</b>	<b>1</b>	<b>6</b>	<b>41</b>	<b>105</b>
<b>Diseases of the nervous system and the sense organs</b>	<b>31</b>	<b>G00-H95</b>	<b>184</b>	<b>0</b>	<b>0</b>	<b>0</b>	<b>1</b>	<b>3</b>	<b>2</b>	<b>2</b>	<b>12</b>	<b>19</b>	<b>59</b>	<b>86</b>
Meningitis	32	G00-G03	2	0	0	0	0	0	0	0	1	0	0	1
<b>Diseases of the Circulatory System:-</b>	<b>33</b>	<b>I00-I99</b>	<b>1,301</b>	<b>0</b>	<b>0</b>	<b>0</b>	<b>2</b>	<b>4</b>	<b>8</b>	<b>35</b>	<b>49</b>	<b>138</b>	<b>355</b>	<b>710</b>
Ischaemic heart disease	34	I20-I25	583	0	0	0	0	1	0	8	23	62	169	320
of which: (Acute myocardial infarction)		I21	267	0	0	0	0	0	0	4	10	23	88	142
Other heart disease	35	I30-I33,I39-I52	214	0	0	0	0	0	3	9	3	22	43	134
Cerebrovascular disease	36	I60-I69	322	0	0	0	1	1	3	10	15	33	90	169
Other diseases of circulatory system			182	0	0	0	1	2	2	8	8	21	53	87



<b>Diseases of the Respiratory system</b>	<b>37</b>	<b>J00-J99</b>	<b>524</b>	<b>0</b>	<b>0</b>	<b>0</b>	<b>0</b>	<b>1</b>	<b>1</b>	<b>5</b>	<b>24</b>	<b>38</b>	<b>158</b>	<b>297</b>
Influenza	38	J10-J11	2	0	0	0	0	1	0	0	1	0	0	0
Pneumonia	39	J12-J19	213	0	0	0	0	0	1	3	6	5	46	152
Chronic Lower respiratory disease	40	J40-J47	196	0	0	0	0	0	0	2	15	28	76	75
of which: Asthma	41	J45-J46	14	0	0	0	0	0	0	0	1	2	3	8
Other diseases of the respiratory system			113	0	0	0	0	0	0	0	2	5	36	70
<b>Diseases of the Digestive system</b>	<b>42</b>	<b>K00-K93</b>	<b>152</b>	<b>0</b>	<b>1</b>	<b>0</b>	<b>0</b>	<b>1</b>	<b>6</b>	<b>9</b>	<b>18</b>	<b>21</b>	<b>40</b>	<b>56</b>
Ulcer of stomach, duodenum and jejunum	43	K25-K28	10	0	0	0	0	0	1	0	1	2	4	2
Chronic liver disease	44	K70,K73-K74	28	0	0	0	0	0	5	8	10	2	2	1
Other diseases of the digestive system			114	0	1	0	0	1	0	1	7	17	34	53
<b>Diseases of the skin and subcutaneous tissue</b>	<b>45</b>	<b>L00-L99</b>	<b>6</b>	<b>0</b>	<b>0</b>	<b>0</b>	<b>0</b>	<b>0</b>	<b>0</b>	<b>0</b>	<b>1</b>	<b>0</b>	<b>2</b>	<b>3</b>
<b>Diseases of the musculoskeletal system/connective tissue</b>	<b>46</b>	<b>M00-M99</b>	<b>30</b>	<b>0</b>	<b>0</b>	<b>0</b>	<b>0</b>	<b>1</b>	<b>0</b>	<b>1</b>	<b>1</b>	<b>2</b>	<b>12</b>	<b>13</b>
Rheumatoid arthritis and osteoarthritis	47	M05-M06,M15-M19	12	0	0	0	0	0	0	1	0	2	2	7
<b>Diseases of the genitourinary system</b>	<b>48</b>	<b>N00-N99</b>	<b>113</b>	<b>0</b>	<b>0</b>	<b>0</b>	<b>0</b>	<b>0</b>	<b>1</b>	<b>1</b>	<b>1</b>	<b>7</b>	<b>30</b>	<b>73</b>
Diseases of the kidney and ureter	49	N00-N29	69	0	0	0	0	0	1	1	0	6	20	41
<b>Complications of pregnancy, childbirth and puerperium</b>	<b>50</b>	<b>O00-O99</b>	<b>0</b>	<b>0</b>	<b>0</b>	<b>0</b>	<b>0</b>	<b>0</b>	<b>0</b>	<b>0</b>	<b>0</b>	<b>0</b>	<b>0</b>	<b>0</b>
<b>Certain conditions originating in the perinatal period<sup>1</sup></b>	<b>51</b>	<b>P00-P96</b>	<b>10</b>	<b>10</b>	<b>0</b>	<b>0</b>	<b>0</b>	<b>0</b>	<b>0</b>	<b>0</b>	<b>0</b>	<b>0</b>	<b>0</b>	<b>0</b>
<b>Congenital malformations and chromosomal abnormalities</b>	<b>52</b>	<b>Q00-Q99</b>	<b>28</b>	<b>16</b>	<b>0</b>	<b>2</b>	<b>0</b>	<b>2</b>	<b>3</b>	<b>2</b>	<b>2</b>	<b>0</b>	<b>1</b>	<b>0</b>
Congenital malformations of the:-														
Nervous system	53	Q00-Q07	6	3	0	1	0	1	1	0	0	0	0	0
Circulatory system	54	Q20-Q28	8	6	0	1	0	0	1	0	0	0	0	0
<b>Symptoms, signs, abnormal findings, ill-defined causes</b>	<b>55</b>	<b>R00-R99</b>	<b>9</b>	<b>0</b>	<b>0</b>	<b>0</b>	<b>0</b>	<b>0</b>	<b>0</b>	<b>0</b>	<b>1</b>	<b>0</b>	<b>1</b>	<b>7</b>
Sudden infant death syndrome	56	R95	0	0	0	0	0	0	0	0	0	0	0	0
Unknown and unspecified causes	57	R96-R99	1	0	0	0	0	0	0	0	0	0	0	1
<b>External causes of injury and poisoning</b>	<b>58</b>	<b>V01-Y89</b>	<b>86</b>	<b>0</b>	<b>1</b>	<b>0</b>	<b>6</b>	<b>5</b>	<b>10</b>	<b>9</b>	<b>14</b>	<b>8</b>	<b>11</b>	<b>22</b>
Accidents	59	V01-X59	63	0	1	0	4	4	2	4	11	6	11	20
of which: Transport accidents	60	V01-V99	12	0	0	0	3	2	0	1	2	2	1	1
Accidental falls	61	W00-W19	25	0	0	0	0	0	1	0	2	3	6	13
Accidental poisoning	62	X40-X49	12	0	0	0	1	2	0	2	6	0	1	0
other accidents			14	0	1	0	0	0	1	1	1	1	3	6
Suicide and intentional self harm	63	X60-X84	13	0	0	0	2	0	6	4	1	0	0	0
Homicide/assault	64	X85-Y09	0	0	0	0	0	0	0	0	0	0	0	0
Events of undetermined intent	65	Y10-Y34	7	0	0	0	0	1	2	1	2	1	0	0
All other external causes			3	0	0	0	0	0	0	0	0	1	0	2

<sup>1</sup> Stillbirths not included.

**Table 17 Infant and neonatal mortality by area of residence of deceased,  
January - March 2011**

Area of residence	Infant mortality		Neonatal mortality	
	Number	Rate	Number	Rate
<b>STATE</b>	<b>67</b>	<b>3.4</b>	<b>58</b>	<b>2.9</b>
<b>LEINSTER</b>	<b>33</b>	<b>2.8</b>	<b>28</b>	<b>2.4</b>
Carlow	0	0.0	0	0.0
Dublin City	11	5.1	8	3.7
South Dublin	1	0.7	1	0.7
Fingal	4	2.5	3	1.9
Dun Laoghaire Rathdown	2	2.5	2	2.5
Kildare	1	0.9	1	0.9
Kilkenny	0	0.0	0	0.0
Laois	0	0.0	0	0.0
Longford	0	0.0	0	0.0
Louth	3	6.0	3	6.0
Meath	1	1.1	0	0.0
Offaly	3	9.9	3	9.9
Westmeath	1	2.5	1	2.5
Wexford	0	0.0	0	0.0
Wicklow	6	9.2	6	9.2
<b>MUNSTER</b>	<b>24</b>	<b>4.7</b>	<b>20</b>	<b>3.9</b>
Clare	3	6.6	2	4.4
Cork City	0	0.0	0	0.0
Cork County	11	6.1	11	6.1
Kerry	1	1.8	1	1.8
Limerick City	1	4.3	0	0.0
Limerick County	4	6.6	3	4.9
North Tipperary	0	0.0	0	0.0
South Tipperary	1	3.6	0	0.0
Waterford City	0	0.0	0	0.0
Waterford County	3	10.9	3	10.9
<b>CONNACHT</b>	<b>8</b>	<b>3.9</b>	<b>8</b>	<b>3.9</b>
Galway City	1	3.5	1	3.5
Galway County	3	4.2	3	4.2
Leitrim	1	8.2	1	8.2
Mayo	1	2.1	1	2.1
Roscommon	1	4.0	1	4.0
Sligo	1	4.2	1	4.2
<b>ULSTER (PART OF)</b>	<b>2</b>	<b>1.8</b>	<b>2</b>	<b>1.8</b>
Cavan	1	3.2	1	3.2
Donegal	1	1.7	1	1.7
Monaghan	0	0.0	0	0.0
<b>REGIONAL AUTHORITIES:</b>				
Border	7	3.5	7	3.5
Midland	4	3.3	4	3.3
West	6	3.5	6	3.5
Dublin	18	3.0	14	2.4
Mid-East	8	3.0	7	2.6
Mid-West	8	5.1	5	3.2
South-East	4	2.0	3	1.5
South-West	12	4.3	12	4.3

Infant mortality rates: Deaths of infants under one year per 1,000 live births, classified by area of residence of mother.

Neonatal mortality rates: Deaths of infants under 28 days per 1,000 live births, classified by area of residence of mother.

Infant and neonatal mortality rates in some areas, based on small numbers are subject to considerable fluctuation and caution should be exercised in their interpretation.

## Background Notes

### Methodology

All figures in this report are classified by quarter of registration. Delay in the registration of some births, deaths and marriages result in them being included in a later period in these quarterly reports.

### Changes in methodology

The extension of the Limerick City boundary, which came into operation on 1st March 2008, has been taken into account in the compilation of the statistics from the Second Quarter of 2008. As a result, data for Limerick City and County are not directly comparable with any quarter prior to the Second Quarter 2008.

This publication continues with the 3 major changes in the methods by which mortality statistics are compiled. These changes were introduced in the Vital Statistics First Quarter 2007 publication.

- 1) Underlying Cause of Death is classified according to International Classification of Diseases, Version 10 (ICD10) instead of to International Classification of Diseases, Version 9 (ICD9). In addition, this and future publications will incorporate certain official updates to ICD-10. In particular, mental and behavioural disorders due to psychoactive substance use (F10-F19), with mention of intestinal infectious diseases (A00-A09), accidental, intentional self and undetermined intent poisoning by and exposure to noxious substances (X40-X49, X60-X69, Y10-Y19) or assault by chemical or noxious substance (X85-X90), are now coded to the latter.

[http://www.who.int/classifications/icd/OfficialWHOUpdatesCombined1996-2008VOL\\_UME2.pdf](http://www.who.int/classifications/icd/OfficialWHOUpdatesCombined1996-2008VOL_UME2.pdf)

- 2) Deaths where there was not an inquest have been coded using the automated coding system developed by the U.S National Centre for Health Statistics (NCHS). Previously the Underlying Cause of Death was chosen manually for all deaths.
- 3) All deaths registered in the Quarter have been included in the statistics, in some cases with a provisional cause of death. Previously the practice was not to include deaths in the quarterly statistics until the cause of death had been definitely established.

Because of these changes, caution should be taken in directly comparing these mortality statistics with those of previous quarters. Many countries have found that moving to ICD10 does affect certain specific categories of causes of death. In particular, a significant drop in the number of deaths attributed to pneumonia and bronchopneumonia has been observed in some countries after moving to ICD10. These deaths were instead assigned to other conditions included on the death certificate.

The effect of the third change above has been to increase the number of deaths in our statistics as compared with previous years. Statistics for deaths due to external causes are particularly affected by this change. The previous method meant that some deaths were included in a later quarter of the year from when they had been registered, because of the delay involved in establishing a definite cause of death.

## Glossary of terms

### **NUTS III Regional Authority areas**

Border, Midland, West, Dublin, Mid-East, Mid-West, South-East, South-West

Border: Cavan, Donegal, Leitrim, Louth, Monaghan, Sligo.

Midland: Laois, Longford, Offaly, Westmeath.

West: Galway City, Galway County, Mayo, Roscommon.

Dublin: Dublin City, South Dublin, Fingal, Dun Laoghaire-Rathdown.

Mid-East: Kildare, Meath, Wicklow.

Mid-West: Clare, Limerick City, Limerick County, North Tipperary.

South-East: Carlow, Kilkenny, South Tipperary, Waterford City, Waterford County, Wexford.

South-West: Cork City, Cork County, Kerry.

## **Appendix**

**Causes of death Eurostat shortlist (August 1998)**

Nr	Disease or external cause	ICD-9 Code	ICD-10 Code
00	All causes of death	001-E999	A00-Y89
01	Infectious and Parasitic Diseases:-	001-139,279.8	A00-B99
02	Tuberculosis	010-018,137	A15-A19,B90
03	Meningococcal Infection	036	A39
04	AIDS (HIV Disease)	042-044,279.8	B20-B24
05	Viral Hepatitis	070	B15-B19
	other Infectious and Parasitic Diseases	Rem (001-139)	Rem (A00-B99)
06	Neoplasms	140-239	C00-D48
07	Malignant Neoplasms of the:-	140-208	C00-C97
08	Lip, Oral Cavity, Pharynx	140-149	C00-C14
09	Oesophagus	150	C15
10	Stomach	151	C16
11	Colon	153	C18
12	Rectum and Anus	154	C19-C20-C21
13	Liver and the Intrahepatic Bile Ducts	155	C22
14	Pancreas	157	C25
15	Larynx and Trachea/Bronchus/Lung	161-162	C32-C34
16	Skin	172	C43
17	Breast	174-175	C50
18	Cervix Uteri	180	C53
19	Other Parts of the Uterus	179,182	C54-C55
20	Ovary	183.0	C56
21	Prostate	185	C61
22	Kidney	189.0	C64
23	Bladder	188	C67
24	Lymph/Haematopoietic Tissue	200-208	C81-C96
	other Malignant Neoplasms	Rem (140-208)	Rem. (C00-C97)
25	Diseases of the Blood and Blood-forming Organs, Immunological disorders <sup>1</sup>	279-289	D50-D89
26	Endocrine, Nutritional and Metabolic Diseases	240-278	E00-E90
27	Diabetes Mellitus	250	E10-E14
28	Mental and Behavioural Disorders	290-319	F00-F99
29	Alcohol abuse (including Alcoholic Psychosis)	291,303	F10
30	Drug Dependence, Toxicomania	304-305	F11-F16,F18-F19
31	Diseases of the Nervous System and the Sense Organs	320-389	G00-H95
32	Meningitis	320-322	G00-G03
33	Diseases of the Circulatory System:-	390-459	I00-I99
34	Ischaemic Heart Disease	410-414	I20-I25
	<i>(Acute Myocardial Infarction)</i>	410	I21
35	Other Heart Disease	420-423,425-429	I30-I33,I39-I52
36	Cerebrovascular Disease	430-438	I60-I69
	other Diseases of the Circulatory System	Rem (390-459)	Rem. (I00-I99)
37	Diseases of the Respiratory System	460-519	J00-J99
38	Influenza	487	J10-J11
39	Pneumonia	480-486	J12-J18
40	Chronic Lower Respiratory Disease	490-494,496	J40-J47
41	Asthma	493	J45-J46
	other Diseases of the Respiratory System	Rem (460-519)	Rem. (J00-J99)
42	Diseases of the Digestive System	520-579	K00-K93
43	Ulcer of Stomach, Duodenum and Jejunum	531-534	K25-K28
44	Chronic Liver Disease	571.0-571.9	K70,K73-K74
	other Diseases of the Digestive System	Rem (520-579)	Rem. (K00-K93)
45	Diseases of the Skin and Subcutaneous Tissue	680-709	L00-L99
46	Diseases of the Musculoskeletal System/Connective Tissue	710-739	M00-M99
47	Rheumatoid Arthritis and Osteoarthritis	714-715	M05-M06,M15-M19
48	Diseases of the Genitourinary System	580-629	N00-N99
49	Diseases of the Kidney and Ureter	580-594	N00-N29
50	Complications of Pregnancy, Childbirth and Puerperium	630-676	O00-O99
51	Certain Conditions Originating in the Perinatal Period (stillbirths not included)	760-779	P00-P96
52	Congenital Malformations and Chromosomal Abnormalities	740-759	Q00-Q99
53	Congenital malformations of the Nervous System	740-742	Q00-Q07
54	Congenital malformations of the Circulatory System	745-747	Q20-Q28
55	Symptoms, Signs, Abnormal Findings, Ill-defined Causes	780-799	R00-R99
56	Sudden Infant Death Syndrome	798.0	R95
57	Unknown and Unspecified Causes	798.1-9,799	R96-R99
	Injury and Poisoning	800-999	S00-T98
58	External Causes of Injury and Poisoning (included in the Foregoing)	E800-E999	V01-Y89
59	Accidents	E800-E929	V01-X59
60	Transport Accidents	E800-E848	V01-V99
	Road transport Accidents	E810-E829, E929.0	V01-V80,V87,V89,Y85
	Motor vehicle transport Accidents	E810-E819	
61	Accidental Falls	E880-E888	W00-W19
62	Accidental Poisoning	E850-E869	X40-X49
	other accidents	Rem (E800-E929)	Rem (V01-X59)
63	Suicide and Intentional Self Harm	E950-E959	X60-X84
64	Homicide/Assault	E960-E969	X85-Y09
65	Cause Undetermined	E980-E989	Y10-Y34
	other External Causes	Rem (E930-E999)	

<sup>1</sup> 279.8 not included

**Estimated Population classified by Sex and Age Group, 2005 - 2010**
*thousands*

Sex and Age Group	Persons in April of each year					
	2005	2006 <sup>1</sup>	2007 <sup>2</sup>	2008 <sup>2</sup>	2009 <sup>2</sup>	2010 <sup>2</sup>
<b>Total Persons</b>	<b>4,133.8</b>	<b>4,239.8</b>	<b>4,339.0</b>	<b>4,422.1</b>	<b>4,459.3</b>	<b>4,470.7</b>
0 - 4 years	296.5	302.3	312.3	327.9	341.6	353.8
5 - 9 "	280.6	288.3	295.9	303.4	308.0	311.6
10 - 14 "	276.3	273.9	275.6	281.0	288.1	293.6
15 - 19 "	292.8	290.3	286.0	283.9	278.6	273.3
20 - 24 "	339.5	342.5	347.8	334.0	304.8	275.7
25 - 29 "	345.2	373.1	405.1	416.7	413.4	392.2
30 - 34 "	335.8	349.4	358.0	366.9	371.4	378.2
35 - 39 "	312.1	322.1	331.7	342.1	348.0	349.0
40 - 44 "	294.1	301.3	305.8	310.2	312.5	315.3
45 - 49 "	265.4	274.7	279.8	286.1	293.5	299.1
50 - 54 "	243.1	247.1	252.6	257.2	261.7	266.8
55 - 59 "	221.4	225.3	227.4	232.0	235.4	239.2
60 - 64 "	172.1	181.7	190.5	199.2	207.5	213.2
65 - 69 "	140.8	143.4	143.5	148.8	155.3	162.2
70 - 74 "	117.4	119.2	119.2	120.8	123.2	125.7
75 - 79 "	91.0	92.5	92.1	93.6	95.2	96.7
80 - 84 "	64.0	64.9	65.4	65.2	65.9	66.8
85 years and over	45.7	48.0	50.3	53.2	55.4	58.1
<b>Total males</b>	<b>2,061.8</b>	<b>2,121.2</b>	<b>2,171.1</b>	<b>2,206.3</b>	<b>2,217.7</b>	<b>2,216.0</b>
0 - 4 years	151.7	154.6	160.5	168.2	175.3	181.5
5 - 9 "	144.3	148.0	151.3	154.9	157.6	159.7
10 - 14 "	142.0	140.5	141.3	144.1	147.7	150.4
15 - 19 "	149.8	148.2	145.4	144.6	141.8	139.2
20 - 24 "	170.0	172.8	175.0	165.7	148.6	133.3
25 - 29 "	174.1	189.3	204.7	209.4	204.6	191.4
30 - 34 "	168.7	177.5	182.6	185.3	186.0	187.5
35 - 39 "	157.8	163.8	169.1	174.0	175.6	174.7
40 - 44 "	147.1	151.4	153.6	155.7	157.5	158.8
45 - 49 "	132.9	138.0	140.6	143.4	147.0	149.5
50 - 54 "	122.9	124.6	127.1	129.2	131.5	133.8
55 - 59 "	112.0	113.9	114.9	117.0	118.5	120.1
60 - 64 "	86.7	91.6	96.0	100.4	104.3	106.9
65 - 69 "	69.1	70.9	71.3	73.6	76.9	80.2
70 - 74 "	55.7	56.5	56.6	57.5	58.7	60.3
75 - 79 "	38.8	40.1	40.6	41.8	42.9	43.7
80 - 84 "	24.3	24.7	25.0	25.0	25.9	26.5
85 years and over	14.0	14.8	15.5	16.6	17.5	18.6
<b>Total females</b>	<b>2,072.0</b>	<b>2,118.7</b>	<b>2,167.9</b>	<b>2,215.8</b>	<b>2,241.6</b>	<b>2,254.7</b>
0 - 4 years	144.9	147.7	151.8	159.7	166.4	172.3
5 - 9 "	136.3	140.3	144.6	148.5	150.5	151.9
10 - 14 "	134.4	133.4	134.2	136.9	140.4	143.2
15 - 19 "	143.0	142.0	140.6	139.3	136.8	134.2
20 - 24 "	169.5	169.7	172.8	168.3	156.1	142.4
25 - 29 "	171.1	183.8	200.4	207.3	208.8	200.8
30 - 34 "	167.0	171.9	175.3	181.6	185.4	190.7
35 - 39 "	154.4	158.3	162.5	168.1	172.4	174.2
40 - 44 "	147.1	149.9	152.2	154.5	155.0	156.5
45 - 49 "	132.6	136.8	139.3	142.8	146.5	149.6
50 - 54 "	120.2	122.5	125.5	128.0	130.2	133.0
55 - 59 "	109.4	111.4	112.5	115.0	116.9	119.1
60 - 64 "	85.4	90.2	94.6	98.8	103.2	106.4
65 - 69 "	71.7	72.5	72.2	75.2	78.4	82.0
70 - 74 "	61.7	62.6	62.6	63.3	64.5	65.4
75 - 79 "	52.2	52.3	51.5	51.8	52.4	53.0
80 - 84 "	39.7	40.2	40.4	40.1	40.0	40.2
85 years and over	31.7	33.2	34.8	36.6	37.9	39.5

<sup>1</sup> De Facto

<sup>2</sup> Preliminary

