

# Chapter 2

## Live Births 2011

The number of births which occurred in 2011 was 74,033 comprising 37,898 males and 36,135 females. The corresponding total for 2010 was 75,174, 38,395 males and 36,779 females. The birth rate in 2011 was 16.2 per 1,000 of the population, 0.3 lower than 2010. In the case of multiple births, each child was counted as an individual birth. See *table 2.21*.

**Table 1** Number of births in Ireland\* and birth rates per 1,000 population in Ireland and neighbouring countries, 1941 to 2011

Period	Numbers of births (in thousands) Ireland*	Birth rate per 1,000 population			
		Ireland*	Northern Ireland	England and Wales	Scotland
1941-1950 <sup>1</sup>	65.0	21.9	22.4	16.9	18.8
1951-1960 <sup>1</sup>	61.7	21.2	21.3	15.8	18.5
1961-1970 <sup>1</sup>	62.4	21.7	22.4	17.5	18.8
1971-1980 <sup>1</sup>	69.4	21.8	18.1	13.2	13.6
1981-1990 <sup>1</sup>	61.6	17.6	17.4	13.2	12.9
1991-2000 <sup>1</sup>	51.6	14.2	14.5	12.6	11.8
2001-2010 <sup>1</sup>	66.6	15.8	13.4	12.3	10.9
1996	50.7	14.0	14.8	12.5	11.6
1997	52.8	14.4	14.5	12.3	11.6
1998	54.0	14.6	14.0	12.1	11.2
1999	53.9	14.4	13.6	11.8	10.8
2000	54.8	14.5	12.7	11.6	10.4
2001	57.9	15.0	13.0	11.4	10.4
2002	60.5	15.4	12.6	11.4	10.1
2003	61.5	15.5	12.7	11.8	10.4
2004	62.0	15.3	13.0	12.1	10.6
2005	61.4	14.8	12.9	12.1	10.7
2006	65.4	15.4	13.4	12.5	10.9
2007	71.4	16.3	13.9	12.8	11.2
2008	75.2	16.8	14.9	13.0	11.6
2009	75.6	16.7	13.9	12.9	11.4
2010	75.2	16.5	14.1	13.1	11.3
2011	74.0	16.2	14.0	12.9	11.1

\* Exclusive of Northern Ireland.

<sup>1</sup> Average annual number of births and birth rates for decennial periods 1941-2010.

## Total Period Fertility Rate

The total period fertility rate (TPFR) is derived from the age-specific fertility rates. It gives the theoretical average number of children who would be born alive to a woman during her lifetime if she were to pass through her childbearing years conforming to the age-specific fertility rates of a given year. A value of 2.1 is generally taken to be the level at which a generation would replace itself in the long run, ignoring migration.

The TPFR has fallen by 34% in the past 30 years, from 3.07 in 1981 to 2.02 in 2011. In Ireland, it dropped below the replacement level in 1989 and again in 1991 and has remained there since. See *table 2.1*.

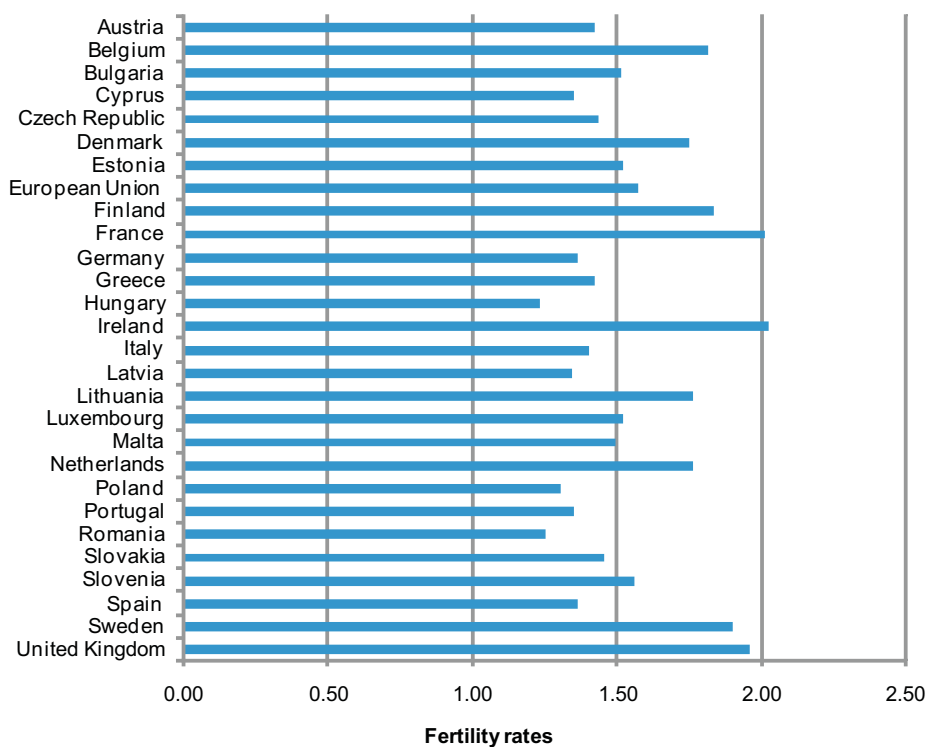
Ireland continues to have the highest fertility rate of the 27 EU member states in 2011. France is next with 2.01 followed by the UK with a rate of 1.96. Hungary had the lowest birth rate at 1.23.

**Table II Total fertility rates in the European Union, 2011**

Area of residence	Total fertility rate	Area of Residence	Total fertility rate
<b>European Union (27 countries)</b>	<b>1.57</b>		
Belgium	1.81	Luxembourg	1.52
Bulgaria	1.51	Hungary	1.23
Czech Republic	1.43	Malta	1.49
Denmark	1.75	Netherlands	1.76
Germany	1.36	Austria	1.42
Estonia	1.52	Poland	1.30
<b>Ireland</b>	<b>2.02</b>	Portugal	1.35
Greece	1.42	Romania	1.25
Spain	1.36	Slovenia	1.56
France	2.01	Slovakia	1.45
Italy	1.40	Finland	1.83
Cyprus	1.35	Sweden	1.90
Latvia	1.34	United Kingdom	1.96
Lithuania	1.76		

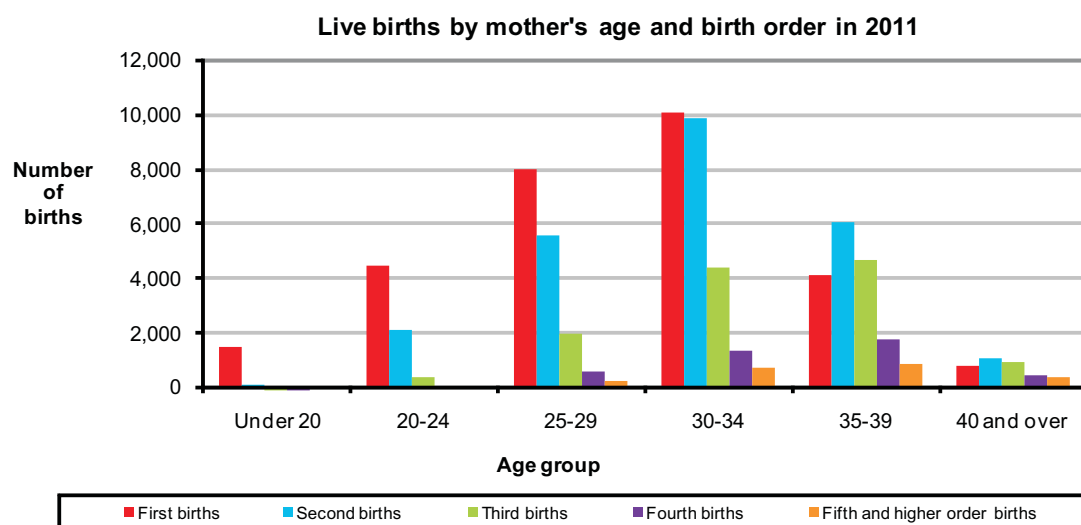
Source: Eurostat

**Graph Table II Total fertility rates in the European Union, 2011**



## Birth Order

A total of 29,210 births (39.5%) were to first time mothers in 2011. Second time mothers had 25,158 births (34.0%) and third time mothers had 12,631 births (17.1%). Mothers who already had three or more live-born children accounted for the remaining 9.0% of births. See table 2.8.



## Age at maternity

The percentage of births to teenage mothers continues to fall. In 2011, just 2.3% (1,690) of births were to mothers under 20. Prior to 2011, it was 1963 since the percentage of births to mothers under 20 was this low. From 1963 onwards the percentage continued to increase until it reached a peak in 1999 with 6.2% (3,314) of all births to mothers under 20. This percentage has continually decreased each year since.

In 1980, mothers under 30 years of age accounted for 60.1% of births. The proportion declined fairly steadily to reach 37.1% in 2010 and 34.7% in 2011. This compares with 51.4% of births in England and Wales and 51.0% in Scotland. In Northern Ireland, just under half of all mothers (49.2%) were under 30 in 2011.

In 2011, 7% of females aged in their twenties gave birth and almost 12% of females aged in their thirties gave birth.

The average age of mothers at maternity in Ireland in 2011 was 31.8 years. Thirty years earlier, in 1981, the average age was 28.9 years. While, in 1961, 50 years earlier, the average age at maternity was slightly higher at 31.5 years.

In Northern Ireland, the average age at maternity in 2011 was 30.0 years, while in England and Wales and in Scotland it was 29.7 years.

**Table III Percentage distribution of births according to age of mother at maternity**

Age at maternity	Ireland*				Northern Ireland	England and Wales	Scotland
	1961	1981	2010	2011	2011	2011	2011
Under 20 years	1.8	4.9	2.7	2.3	4.6	5.0	5.8
20-24	14.0	22.1	10.8	9.9	16.3	18.6	18.1
25-29	26.5	32.1	23.7	22.5	28.3	27.7	27.1
30-34	27.2	25.4	34.7	36.2	30.3	28.6	28.8
35-39	21.7	12.3	23.3	23.9	16.6	15.9	16.2
40-44	8.2	3.0	4.6	4.9	3.7	3.8	3.7
45 years and over	0.6	0.2	0.2	0.2	0.2	0.23	0.2
<b>Total</b>	<b>100.0</b>	<b>100.0</b>	<b>100.0</b>	<b>100.0</b>	<b>100.0</b>	<b>100.0</b>	<b>100.0</b>
<b>Average age at maternity</b>	<b>31.6</b>	<b>28.8</b>	<b>31.5</b>	<b>31.8</b>	<b>30.0</b>	<b>29.7</b>	<b>29.7</b>

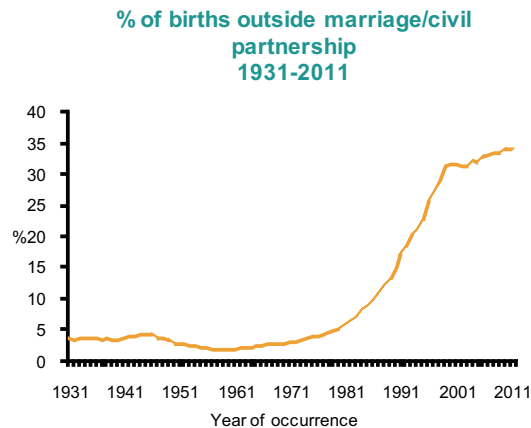
\* Exclusive of Northern Ireland

## Births outside marriage/civil partnership

The total number of births outside marriage/civil partnership in 2011 was 25,091. This corresponds to 33.9% of all births, 0.1% higher than 2010.

The highest percentage of births outside marriage/civil partnership occurred in Limerick City at 48.8% while the area with the lowest percentage was Galway County at 25.2%. See *table 2.21*.

The lowest ever number of births outside marriage/civil partnership was recorded in 1959 (1.6%). The graph illustrates the steady increase in the percentage of births outside marriage/civil partnership, notably since 1980.



## Multiple births

The number of maternities in 2011 which resulted in multiple live births was 1,335 consisting of 1,307 sets of twins, 27 sets of triplets and 1 set of quadruplets. This is equivalent to a “twinning rate” of 18.0 (i.e. the number of sets of live twins per 1,000 maternities which resulted in live births). This represents an increase of 1.2 on the 2010 rate of 16.8. Over the past 20 years, the twinning rate has increased very significantly – from 11.7 in 1991 to a high of 18.0 in 2011. See *table 2.20*.

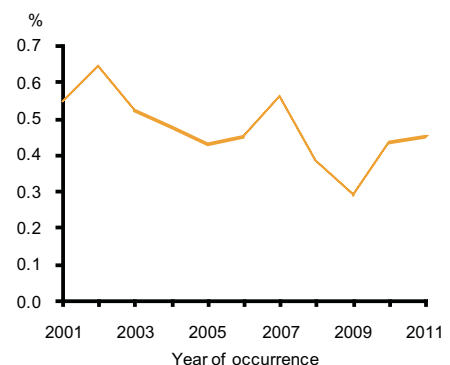
## Domiciliary births

There were 334 babies born at home in 2011. This represents an increase of 2.5% on the 2010 figure when there were 326 domiciliary maternities. Such births have dropped from one in three births in the early 1950’s to only five in every thousand in 2011. See *table 2.17*.

### Total number of domicilliary births from 2001 to 2011

Domiciliary births	
Year	number
2001	313
2002	410
2003	321
2004	295
2005	264
2006	293
2007	399
2008	286
2009	217
2010	326
2011	334

### Domiciliary births percentages 2001-2011



## Nationality of parents

In 2011, 77.3% of mothers' were of Irish nationality, 1.9% of UK nationality, 1.4% of EU-15 (excluding Ireland and the UK) nationality, 10.8% of EU-27 (excluding EU-15) nationality and 7.9% of other nationality. The nationality of the mother was not stated for 0.6% of births.

Irish was given as the nationality of fathers in 56.9% of births, however there was 26.7% of births where fathers nationality was not given.

The average age at maternity differed by nationality of mother in 2011. The highest average age at maternity was for mothers of EU-15 (excluding Ireland and the UK) nationality, 33.3 years, while the lowest was for mothers of EU-27 (excluding EU-15) nationality, 29.1 years. The average age for mothers of Irish nationality was 32.1 years. The differences in average age at maternity can be affected by the age structure of the population for each nationality group. See tables 2.24a and b.

## Birthweight

In 2011, babies with a birthweight of between 3,500 and 3,999 grams accounted for the highest percentage of births of known birthweight at 34.5%. Of these, 53.7% were male and the remaining 46.3% were female. The majority of babies (66.6%) with a birthweight of 3,500 to 3,999 grams and of known gestation had a gestational age of 40 weeks and over.

Those with a birthweight of under 1,000 grams accounted for the lowest percentage of births of known birthweight at 0.3%. Of these, 54.9% were male and the remaining 45.1% were female. Eight in ten (80.6%) babies born in 2011 with a birthweight of under 1,000 grams and of known gestation had a gestational age of under 28 weeks. See tables 2.13, 2.14 and 2.15.

## Gestation

In 2011, babies with a gestational age of 40 weeks and over, represented the majority (55.0%) of births of known gestation. Males accounted for 50.9% of these and the remaining 49.1% were females.

Babies with a gestational age of under 28 weeks represented the lowest percentage of births of known gestation at 0.3%. Of these, 60.4% were male and the remaining 39.6% were female. See tables 2.12, 2.14 and 2.16.

## Technical note

This report contains upward revisions to previously published figures for the number of births occurring in 2008. These revisions were first published in the Report on Vital Statistics 2009.

## Live births

The terms used in relation to live births are defined as follows:

**Parity:** Parity is the number of previous live born children to a woman.

**Birth Order:** Birth order is the number of live born children a woman has in the order in which they are born.

**Parity and Birth Order:** A first birth relates to parity 0 or birth order 1 i.e. birth order = parity + 1.

**Crude birth rate (CBR):** The number of live births divided by the total population at that age (or age-group), multiplied by 1,000.

**Age specific fertility rate (ASFR):** The number of live births at a certain age (or age-group) divided by the female population at that age (or age-group) multiplied by 1,000.

**Total period fertility rate (TPFR):** The sum of the ASFRs, divided by 1,000, i.e. the expected number of children a woman will have in her lifetime based on the fertility of that year.

$$TPFR = \sum_{15}^{49} asfr / 1,000 \cong {}_5TPFR = 5 \sum_{15-19}^{45-49} asfr / 1,000$$

*Age specific reproduction rate (ASRR):* The number of female live births at a certain age (or age group) divided by the female population at that age (or age-group), multiplied by 1,000.

*Gross reproduction rate (GRR):* The sum of the ASRRs divided by 1,000 i.e. the expected number of daughters a woman will have in her lifetime based on the fertility of that year.

*Net reproduction rate (NRR):* The sum of the products of the ASRRs and the expected number of female years to be lived at that age, divided by 1,000 i.e. the GRR adjusted for female mortality.

The difference between the gross and net reproduction rates is an indicator of female mortality.

*Average age at maternity:* 0.5 plus the sum of the products of the ages at maternity of live births and their ages divided by the number of live births.

$$\text{average age} = 0.5 + \frac{\sum_{x=15}^{49} xf_x}{\sum_{x=15}^{49} f_x}$$

*Average age at maternity of first birth:* 0.5 plus the sum of the products of the ages at maternity of first live births and their ages divided by the number of first live births.

Childbearing years are regarded as between the ages of 15 and 49.

Live births to mothers aged less than 15 are included in the age 15 category and are divided by the age 15 population. Similarly live births to mothers aged greater than 49 are included in the age 49 category and are divided by the age 49 population.

Average of mean ages: Live births where the age at maternity is not stated are excluded from the calculation.

# Tables

**Table 2.1 Total period of fertility rate (TPFR) and age specific fertility rates (ASFR), 1965-2011**

Year	ASFR							TPFR
	15-19	20-24	25-29	30-34	35-39	40-44	45-49	All ages
1965	14.0	125.1	236.1	218.9	150.3	57.6	4.2	4.03
1966	13.5	128.1	232.5	213.1	144.4	54.9	4.3	3.95
1967	14.5	129.7	220.0	208.3	138.6	52.9	4.4	3.84
1968	14.1	134.8	222.5	197.8	133.8	48.5	4.1	3.78
1969	15.4	139.7	228.7	199.5	133.1	48.1	4.4	3.85
1970	16.3	145.5	228.7	201.9	131.9	45.3	3.7	3.87
1971	19.1	150.3	243.5	200.5	131.7	46.6	3.3	3.98
1972	21.3	152.1	241.5	187.6	125.7	43.4	3.4	3.88
1973	22.4	149.9	235.0	181.2	115.6	41.3	2.7	3.74
1974	22.6	145.4	229.5	171.9	111.2	39.9	2.8	3.62
1975	22.8	138.5	216.0	162.2	100.2	36.8	2.6	3.40
1976	21.9	133.7	211.7	162.2	94.9	34.8	3.1	3.31
1977	21.2	130.4	205.5	166.7	93.9	33.2	3.0	3.27
1978	21.8	126.2	201.7	167.8	96.5	31.1	2.8	3.24
1979	22.7	125.9	202.5	168.4	94.1	29.9	2.3	3.23
1980	23.0	125.3	202.3	165.7	97.3	29.6	2.3	3.23
1981	22.2	117.4	190.3	161.5	93.6	26.5	2.4	3.07
1982	20.7	110.2	185.0	156.9	91.6	24.9	2.2	2.96
1983	18.7	102.6	172.3	146.9	84.6	25.0	1.7	2.76
1984	18.0	95.4	163.3	138.4	78.9	21.8	1.9	2.59
1985	16.6	87.2	158.6	138.4	75.3	21.6	1.5	2.50
1986	16.4	83.1	154.3	139.0	73.4	21.2	1.5	2.44
1987	16.1	75.4	147.9	132.3	68.6	19.8	1.3	2.31
1988	15.3	69.6	141.0	125.5	63.2	17.8	1.1	2.17
1989	14.8	64.0	134.4	122.0	62.4	17.0	1.1	2.08
1990	16.7	63.3	137.6	126.2	63.1	15.4	1.1	2.12
1991	17.1	64.0	131.8	124.4	63.4	15.2	1.0	2.09
1992	16.9	58.9	123.9	122.3	61.3	14.4	0.8	1.99
1993	16.3	53.8	116.5	121.2	58.5	14.1	0.9	1.91
1994	15.0	50.7	112.5	119.8	58.6	12.8	0.7	1.85
1995	15.1	50.3	106.7	123.5	60.3	13.1	0.8	1.85
1996	16.7	52.2	105.3	127.1	63.9	11.8	0.6	1.89
1997	17.5	50.9	106.4	131.5	66.6	13.4	0.8	1.94
1998	19.2	52.5	103.1	131.5	69.3	13.4	0.6	1.95
1999	20.2	51.0	99.4	129.5	68.5	12.9	0.6	1.91
2000	19.5	51.6	95.1	129.3	71.3	13.6	0.5	1.90
2001	19.9	53.3	95.1	134.1	75.3	13.9	0.7	1.96
2002	19.4	52.8	93.7	134.5	80.0	14.5	0.6	1.98
2003	19.0	50.3	92.6	135.0	82.3	15.7	0.5	1.98
2004	17.1	49.1	88.4	134.3	85.2	16.2	0.5	1.95
2005	16.8	45.8	79.9	129.4	86.4	16.9	0.6	1.88
2006	16.4	49.5	82.1	130.4	90.8	18.1	0.8	1.94
2007	17.4	48.5	84.1	138.1	96.7	19.4	0.8	2.03
2008	16.5	49.6	87.8	139.3	98.9	19.7	1.2	2.07
2009	15.6	48.9	90.2	136.3	98.5	20.9	1.1	2.06
2010	14.4	48.7	91.1	136.4	97.9	21.7	1.1	2.06
2011	12.3	48.8	88.9	134.8	97.9	22.4	1.1	*2.02

Contains revised rates for 2007 onwards based on Census of population usual residence estimated population figures.

\*Based on single year of age for census year 2011

### Calculation of Total Period Fertility Rate

The TPFR is compiled by summing the age specific fertility rates for the relevant five-year age-groups, dividing by 1,000 and multiplying by 5. The small number of births for which the age of the mother is not stated is distributed in proportion to the stated categories.



**Table 2.2 Age specific and total period fertility rates by area of residence of mother in 2011**

Area of residence	Live births per 1,000 females at specified ages							TPFR
	Under 20	20-24	25-29	30-34	35-39	40-44	45-49	All ages
<b>STATE</b>	<b>12.3</b>	<b>48.8</b>	<b>88.9</b>	<b>134.8</b>	<b>97.9</b>	<b>22.4</b>	<b>1.1</b>	<b>*2.02</b>
<b>LEINSTER</b>	<b>14.4</b>	<b>52.0</b>	<b>87.2</b>	<b>128.9</b>	<b>96.6</b>	<b>22.8</b>	<b>1.2</b>	<b>2.02</b>
Carlow	21.0	69.2	126.2	146.6	92.7	20.1	1.1	2.38
Dublin City	19.0	46.2	59.6	95.3	91.1	23.6	1.2	1.68
South Dublin	19.8	68.1	103.8	134.5	92.1	24.9	0.7	2.22
Fingal	14.3	54.4	96.3	138.0	99.9	27.5	1.7	2.16
Dun Laoghaire Rathdown	5.2	23.1	51.1	125.0	125.3	27.0	2.3	1.80
Kildare	10.6	44.3	99.5	149.9	103.9	22.2	1.8	2.16
Kilkenny	10.4	43.0	90.7	140.1	96.6	20.4	1.8	2.02
Laois	16.4	58.7	114.2	130.3	85.4	18.0	1.2	2.12
Longford	17.1	63.6	100.6	131.8	118.5	24.3	0.0	2.28
Louth	17.4	60.6	105.1	124.6	73.4	16.2	0.2	1.99
Meath	9.1	52.2	112.9	158.2	106.9	22.5	0.5	2.31
Offaly	13.9	73.5	108.0	145.8	83.0	18.8	1.1	2.22
Westmeath	12.7	55.7	101.2	149.1	83.4	17.5	1.0	2.10
Wexford	16.7	72.4	111.1	135.8	83.5	17.1	0.6	2.19
Wicklow	11.0	52.3	100.7	143.1	102.1	23.8	1.4	2.17
<b>MUNSTER</b>	<b>10.1</b>	<b>45.7</b>	<b>90.9</b>	<b>143.9</b>	<b>100.1</b>	<b>21.9</b>	<b>1.0</b>	<b>2.07</b>
Clare	9.1	45.6	86.9	147.5	98.8	25.4	0.7	2.07
Cork City	15.4	45.3	68.2	106.8	78.2	16.2	0.5	1.65
Cork County	6.2	39.8	90.5	154.7	108.5	22.7	1.1	2.12
Kerry	9.6	43.5	92.1	142.6	91.3	23.2	0.8	2.02
Limerick City	24.1	54.2	82.1	101.4	67.0	12.1	0.5	1.71
Limerick County	11.4	47.7	102.2	160.3	107.0	25.2	3.0	2.28
North Tipperary	8.9	54.2	113.9	161.8	122.6	24.8	0.8	2.44
South Tipperary	9.7	52.4	93.5	131.2	84.6	20.3	0.0	1.96
Waterford City	13.8	59.5	114.6	132.7	94.5	18.2	2.0	2.18
Waterford County	11.3	40.9	95.4	146.6	107.2	17.2	0.4	2.09
<b>CONNACHT</b>	<b>8.4</b>	<b>39.2</b>	<b>86.3</b>	<b>143.1</b>	<b>103.2</b>	<b>24.5</b>	<b>0.8</b>	<b>2.03</b>
Galway City	8.2	27.8	59.2	89.1	92.9	24.3	2.5	1.52
Galway County	7.0	47.2	99.4	166.2	110.5	29.2	0.3	2.30
Leitrim	13.0	42.7	98.4	146.4	92.1	30.4	1.0	2.12
Mayo	8.8	41.7	96.4	154.7	101.1	22.0	0.7	2.13
Roscommon	8.1	39.0	92.6	148.2	98.2	19.4	0.9	2.03
Sligo	9.8	36.5	84.9	144.7	109.4	18.2	0.9	2.02
<b>ULSTER (PART OF)</b>	<b>11.5</b>	<b>50.5</b>	<b>103.6</b>	<b>141.0</b>	<b>89.6</b>	<b>17.6</b>	<b>0.8</b>	<b>2.07</b>
Cavan	14.4	54.8	116.2	156.6	110.8	21.8	0.9	2.38
Donegal	10.8	51.2	100.4	133.6	77.3	16.7	1.1	1.96
Monaghan	9.9	43.8	96.2	140.7	96.5	15.1	0.0	2.01
<b>REGIONAL AUTHORITIES:</b>								
Border	12.7	50.8	101.4	137.5	87.9	18.1	0.7	2.05
Midland	14.7	62.4	106.8	140.3	88.3	18.9	1.0	2.16
West	7.9	39.4	85.8	142.7	103.2	25.0	0.8	2.02
Dublin	15.7	48.5	74.1	117.0	98.6	25.4	1.4	1.90
Mid-East	10.2	48.9	104.4	151.3	104.5	22.7	1.2	2.22
Mid-West	12.2	49.5	96.2	147.4	101.9	23.5	1.5	2.16
South-East	13.7	57.6	104.6	138.1	91.5	18.7	0.9	2.13
South-West	8.6	42.0	85.4	144.0	100.8	21.9	0.9	2.02

\*Based on single year of age for census year 2011

**Table 2.3 Births by area of residence, sex of infant and age at maternity in 2011**

Area of residence	Males	Females	Total	Under 20	20-24	25-29	30-34	35-39	40-44	45 & over	Age not stated
<b>STATE</b>	<b>37,898</b>	<b>36,135</b>	<b>74,033</b>	<b>1,690</b>	<b>7,321</b>	<b>16,693</b>	<b>26,764</b>	<b>17,726</b>	<b>3,658</b>	<b>169</b>	<b>12</b>
<b>LEINSTER</b>	<b>21,857</b>	<b>20,522</b>	<b>42,379</b>	<b>1,054</b>	<b>4,431</b>	<b>9,767</b>	<b>15,018</b>	<b>9,948</b>	<b>2,055</b>	<b>102</b>	<b>4</b>
<b>Carlow</b>	513	479	992	34	120	262	338	197	39	2	-
Carlow Town	231	209	440	21	54	131	144	79	10	1	-
Rest of Co. Carlow	282	270	552	13	66	131	194	118	29	1	-
<b>Dublin City</b>	4,124	3,956	8,080	255	1,025	1,891	2,670	1,820	400	19	-
<b>South Dublin</b>	2,628	2,420	5,048	158	643	1,278	1,733	1,000	228	6	2
<b>Fingal</b>	2,822	2,740	5,562	107	485	1,253	2,071	1,344	286	15	1
<b>Dun Laoghaire Rathdown</b>	1,497	1,345	2,842	32	169	430	1,046	948	199	18	-
<b>Kildare</b>	1,981	1,870	3,851	68	295	862	1,446	986	181	13	-
Athy Town	211	205	416	16	34	104	149	94	19	-	-
Naas Town	244	196	440	8	39	97	153	117	26	-	-
Rest of Co. Kildare	1,526	1,469	2,995	44	222	661	1,144	775	136	13	-
<b>Kilkenny</b>	766	659	1,425	31	121	304	529	364	70	6	-
Kilkenny Borough	256	200	456	15	51	115	160	99	13	3	-
Rest of Co. Kilkenny	510	459	969	16	70	189	369	265	57	3	-
<b>Laois</b>	714	632	1,346	40	141	371	460	279	52	3	-
<b>Longford</b>	349	286	635	21	73	145	198	164	34	-	-
Longford Town	113	88	201	10	36	48	52	50	5	-	-
Rest of Co. Longford	236	198	434	11	37	97	146	114	29	-	-
<b>Louth</b>	972	914	1,886	65	246	493	635	371	75	1	-
Drogheda Borough	371	347	718	22	98	192	235	146	25	-	-
Dundalk Town	337	313	650	33	103	186	199	107	21	1	-
Rest of Co. Louth	264	254	518	10	45	115	201	118	29	-	-
<b>Meath</b>	1,789	1,738	3,527	50	274	787	1,340	908	165	3	-
Kells Town	133	114	247	1	23	53	107	54	9	-	-
Navan Town	407	409	816	22	80	201	268	211	34	-	-
Trim Town	106	100	206	4	16	52	79	49	6	-	-
Rest of Co. Meath	1,143	1,115	2,258	23	155	481	886	594	116	3	-
<b>Offaly</b>	626	618	1,244	34	170	300	443	242	52	3	-
Birr Town	90	105	195	7	22	43	74	40	9	-	-
Tullamore Town	219	226	445	13	67	108	152	84	19	2	-
Rest of Co. Offaly	317	287	604	14	81	149	217	118	24	1	-
<b>Westmeath</b>	711	678	1,389	35	152	340	523	281	55	3	-
Athlone Town	173	156	329	5	46	100	121	46	10	1	-
Rest of Co. Westmeath	538	522	1,060	30	106	240	402	235	45	2	-
<b>Wexford</b>	1,234	1,062	2,296	78	307	567	784	464	92	3	1
Enniscorthy Town	274	238	512	20	71	110	185	109	15	1	1
New Ross Town	144	113	257	6	30	79	78	55	9	-	-
Wexford Borough	175	147	322	8	53	93	104	55	9	-	-
Rest of Co. Wexford	641	564	1,205	44	153	285	417	245	59	2	-
<b>Wicklow</b>	1,131	1,125	2,256	46	210	484	802	580	127	7	-
Arklow Town	134	135	269	6	32	91	77	52	10	1	-
Bray Town	237	257	494	9	51	118	157	135	24	-	-
Wicklow Town	17	18	35	-	5	7	8	11	3	1	-
Rest of Co. Wicklow	743	715	1,458	31	122	268	560	382	90	5	-
<b>MUNSTER</b>	<b>9,783</b>	<b>9,518</b>	<b>19,301</b>	<b>386</b>	<b>1,784</b>	<b>4,198</b>	<b>7,195</b>	<b>4,728</b>	<b>962</b>	<b>44</b>	<b>4</b>
<b>Clare</b>	872	856	1,728	33	152	321	646	461	112	3	-
Ennis Town	242	262	504	9	43	104	186	126	34	2	-
Kilrush Town	46	46	92	1	15	15	30	22	9	-	-
Rest of Co. Clare	584	548	1,132	23	94	202	430	313	69	1	-
<b>Cork City</b>	794	781	1,575	54	254	418	512	282	53	2	-
<b>Cork County</b>	3,403	3,310	6,713	76	453	1,312	2,700	1,812	344	15	1
Clonakilty Town	57	54	111	-	9	20	47	29	6	-	-
Cobh Town	79	72	151	3	24	30	48	40	6	-	-
Fermoy Town	59	61	120	2	9	35	46	24	4	-	-
Kinsale Town	48	30	78	-	2	10	35	27	3	1	-
Macroom Town	39	41	80	-	10	21	33	11	5	-	-
Mallow Town	99	88	187	3	20	39	67	42	16	-	-
Midleton Town	75	65	140	7	24	34	41	30	4	-	-
Skibbereen Town	31	33	64	2	6	14	21	15	6	-	-
Youghal Town	54	58	112	2	13	36	39	17	4	1	-
Rest of Co. Cork	2,862	2,808	5,670	57	336	1,073	2,323	1,577	290	13	1
<b>Kerry</b>	980	1,020	2,000	42	174	448	745	469	116	4	2
Killarney Town	187	196	383	5	33	99	135	85	26	-	-
Listowel Town	77	80	157	3	13	38	65	32	5	1	-
Tralee Town	253	228	481	17	59	111	181	90	23	-	-
Rest of Co. Kerry	463	516	979	17	69	200	364	262	62	3	2

**Table 2.3 Births by area of residence, sex of infant and age at maternity in 2011 - Continued**

Area of residence	Males	Females	Total	Under 20	20-24	25-29	30-34	35-39	40-44	45 & over	Age not stated
<b>Limerick City</b>	393	370	763	44	126	209	235	127	21	1	-
<b>Limerick County</b>	1,173	1,123	2,296	47	195	505	872	546	118	13	-
<b>North Tipperary</b>	624	569	1,193	20	108	260	413	326	64	2	-
Nenagh Town	156	155	311	6	26	70	103	89	17	-	-
Templemore Town	30	37	67	-	11	12	18	20	6	-	-
Thurles Town	191	165	356	7	37	83	118	97	13	1	-
Rest of North Tipperary	247	212	459	7	34	95	174	120	28	1	-
<b>South Tipperary</b>	623	607	1,230	27	141	297	430	271	63	-	1
Carrick-on-Suir Town	59	52	111	3	20	29	37	16	6	-	-
Cashel Town	88	79	167	1	24	36	63	34	9	-	-
Clonmel Borough	210	223	433	11	43	104	164	89	22	-	-
Tipperary Town	64	48	112	6	12	37	31	18	8	-	-
Rest of South Tipperary	202	205	407	6	42	91	135	114	18	-	1
<b>Waterford City</b>	430	400	830	20	104	242	275	158	28	3	-
<b>Waterford County</b>	491	482	973	23	77	186	367	276	43	1	-
Dungarvan Town	106	102	208	6	18	48	83	49	4	-	-
Rest of Co. Waterford	385	380	765	17	59	138	284	227	39	1	-
<b>CONNACHT</b>	<b>4,080</b>	<b>3,951</b>	<b>8,031</b>	<b>140</b>	<b>659</b>	<b>1,678</b>	<b>2,988</b>	<b>2,091</b>	<b>458</b>	<b>15</b>	<b>2</b>
<b>Galway City</b>	574	541	1,115	17	107	287	367	278	54	5	-
<b>Galway County</b>	1,440	1,416	2,856	38	219	525	1,103	778	191	2	-
Ballinasloe Town	162	134	296	7	34	62	109	64	20	-	-
Rest of Co. Galway	1,278	1,282	2,560	31	185	463	994	714	171	2	-
<b>Leitrim</b>	219	242	461	12	35	101	170	109	33	1	-
<b>Mayo</b>	911	896	1,807	37	155	387	680	446	99	3	-
Ballina Town	178	178	356	10	43	78	120	94	10	1	-
Castlebar Town	161	172	333	4	34	67	116	94	18	-	-
Westport Town	89	99	188	1	16	39	78	46	7	1	-
Rest of Co. Mayo	483	447	930	22	62	203	366	212	64	1	-
<b>Roscommon</b>	443	422	865	16	67	186	327	223	42	2	2
<b>Sligo</b>	493	434	927	20	76	192	341	257	39	2	-
Sligo Borough	147	145	292	11	34	80	92	66	8	1	-
Rest of Co. Sligo	346	289	635	9	42	112	249	191	31	1	-
<b>ULSTER (PART OF)</b>	<b>2,178</b>	<b>2,144</b>	<b>4,322</b>	<b>110</b>	<b>447</b>	<b>1,050</b>	<b>1,563</b>	<b>959</b>	<b>183</b>	<b>8</b>	<b>2</b>
<b>Cavan</b>	640	627	1,267	33	118	310	449	299	56	2	-
Cavan Town	124	127	251	10	36	51	89	56	8	1	-
Rest of Co. Cavan	516	500	1,016	23	82	259	360	243	48	1	-
<b>Donegal</b>	1,094	1,078	2,172	57	244	526	790	452	96	6	1
Buncrana Town	71	70	141	1	19	51	47	20	3	-	-
Bundoran Town	13	14	27	-	7	9	5	6	-	-	-
Letterkenny Town	298	274	572	12	75	135	197	127	25	-	1
Rest of Co. Donegal	712	720	1,432	44	143	331	541	299	68	6	-
<b>Monaghan</b>	444	439	883	20	85	214	324	208	31	-	1
Carrickmacross Town	70	94	164	3	9	43	64	40	4	-	1
Castleblaney Town	75	79	154	3	15	42	56	32	6	-	-
Clones Town	22	16	38	1	5	11	14	6	1	-	-
Monaghan Town	86	73	159	7	24	40	50	31	7	-	-
Rest of Co. Monaghan	191	177	368	6	32	78	140	99	13	-	-
Towns and Boroughs	7,618	7,226	14,844	390	1,733	3,661	5,130	3,277	629	21	3
<b>REGIONAL AUTHORITIES:</b>											
Border	3,862	3,734	7,596	207	804	1,836	2,709	1,696	330	12	2
Midland	2,400	2,214	4,614	130	536	1,156	1,624	966	193	9	-
West	3,368	3,275	6,643	108	548	1,385	2,477	1,725	386	12	2
Dublin	11,071	10,461	21,532	552	2,322	4,852	7,520	5,112	1,113	58	3
Mid-East	4,901	4,733	9,634	164	779	2,133	3,588	2,474	473	23	-
Mid-West	3,062	2,918	5,980	144	581	1,295	2,166	1,460	315	19	-
South-East	4,057	3,689	7,746	213	870	1,858	2,723	1,730	335	15	2
South-West	5,177	5,111	10,288	172	881	2,178	3,957	2,563	513	21	3

**Table 2.4 Births by area of residence showing the numbers in each quarter in 2011**

Area of residence	1st Quarter		2nd Quarter		3rd Quarter		4th Quarter		Year	
	Males	Females	Males	Females	Males	Females	Males	Females	Males	Females
<b>STATE</b>	<b>9,159</b>	<b>8,832</b>	<b>9,556</b>	<b>8,899</b>	<b>9,796</b>	<b>9,457</b>	<b>9,387</b>	<b>8,947</b>	<b>37,898</b>	<b>36,135</b>
<b>LEINSTER</b>	<b>5,224</b>	<b>4,981</b>	<b>5,605</b>	<b>5,021</b>	<b>5,615</b>	<b>5,353</b>	<b>5,413</b>	<b>5,167</b>	<b>21,857</b>	<b>20,522</b>
Carlow	131	112	146	124	119	118	117	125	513	479
Dublin City	979	917	1,059	958	1,004	1,030	1,082	1,051	4,124	3,956
South Dublin	589	607	655	581	700	589	684	643	2,628	2,420
Fingal	688	682	683	649	724	762	727	647	2,822	2,740
Dun Laoghaire Rathdown	367	326	370	334	383	352	377	333	1,497	1,345
Kildare	504	482	530	451	493	495	454	442	1,981	1,870
Kilkenny	177	163	194	154	202	183	193	159	766	659
Laois	190	139	187	169	166	168	171	156	714	632
Longford	75	59	101	79	89	74	84	74	349	286
Louth	246	204	257	240	248	249	221	221	972	914
Meath	419	404	463	450	475	442	432	442	1,789	1,738
Offaly	137	150	183	157	170	157	136	154	626	618
Westmeath	162	184	185	158	189	174	175	162	711	678
Wexford	286	274	314	253	361	262	273	273	1,234	1,062
Wicklow	274	278	278	264	292	298	287	285	1,131	1,125
<b>MUNSTER</b>	<b>2,457</b>	<b>2,341</b>	<b>2,398</b>	<b>2,364</b>	<b>2,511</b>	<b>2,513</b>	<b>2,417</b>	<b>2,300</b>	<b>9,783</b>	<b>9,518</b>
Clare	212	204	220	213	225	220	215	219	872	856
Cork City	215	191	184	188	207	203	188	199	794	781
Cork County	900	806	837	836	828	864	838	804	3,403	3,310
Kerry	233	280	248	254	253	250	246	236	980	1,020
Limerick City	110	93	92	90	93	105	98	82	393	370
Limerick County	295	282	274	260	318	308	286	273	1,173	1,123
North Tipperary	128	120	158	148	171	166	167	135	624	569
South Tipperary	134	133	168	172	176	167	145	135	623	607
Waterford City	106	94	96	111	119	96	109	99	430	400
Waterford County	124	138	121	92	121	134	125	118	491	482
<b>CONNACHT</b>	<b>975</b>	<b>977</b>	<b>1,008</b>	<b>967</b>	<b>1,073</b>	<b>1,029</b>	<b>1,024</b>	<b>978</b>	<b>4,080</b>	<b>3,951</b>
Galway City	143	140	149	129	154	132	128	140	574	541
Galway County	328	350	361	348	383	372	368	346	1,440	1,416
Leitrim	55	60	50	57	56	70	58	55	219	242
Mayo	236	226	218	234	224	227	233	209	911	896
Roscommon	100	96	125	103	114	119	104	104	443	422
Sligo	113	105	105	96	142	109	133	124	493	434
<b>ULSTER (PART OF)</b>	<b>503</b>	<b>533</b>	<b>545</b>	<b>547</b>	<b>597</b>	<b>562</b>	<b>533</b>	<b>502</b>	<b>2,178</b>	<b>2,144</b>
Cavan	163	154	171	149	170	163	136	161	640	627
Donegal	257	267	267	288	286	279	284	244	1,094	1,078
Monaghan	83	112	107	110	141	120	113	97	444	439
<b>REGIONAL AUTHORITIES:</b>										
Border	917	902	957	940	1,043	990	945	902	3,862	3,734
Midland	564	532	656	563	614	573	566	546	2,400	2,214
West	807	812	853	814	875	850	833	799	3,368	3,275
Dublin	2,623	2,532	2,767	2,522	2,811	2,733	2,870	2,674	11,071	10,461
Mid-East	1,197	1,164	1,271	1,165	1,260	1,235	1,173	1,169	4,901	4,733
Mid-West	745	699	744	711	807	799	766	709	3,062	2,918
South-East	958	914	1,039	906	1,098	960	962	909	4,057	3,689
South-West	1,348	1,277	1,269	1,278	1,288	1,317	1,272	1,239	5,177	5,111

**Table 2.5 Births in 2011, classified by sex and age of mother at maternity and showing the number of births outside marriage/civil partnership**

Age of mother at maternity	Total Births (including births outside marriage/civil partnership)			Births outside marriage/civil partnership		
	Total	Males	Females	Total	Males	Females
<b>All ages</b>	<b>74,033</b>	<b>37,898</b>	<b>36,135</b>	<b>25,091</b>	<b>12,841</b>	<b>12,250</b>
<b>15 and under</b>	<b>36</b>	<b>16</b>	<b>20</b>	<b>36</b>	<b>16</b>	<b>20</b>
16	103	55	48	102	55	47
17	252	129	123	239	123	116
18	462	234	228	418	214	204
19	837	434	403	745	376	369
<b>Under 20</b>	<b>1,690</b>	<b>868</b>	<b>822</b>	<b>1,540</b>	<b>784</b>	<b>756</b>
20	1,099	574	525	997	528	469
21	1,234	590	644	1,067	511	556
22	1,364	699	665	1,132	595	537
23	1,694	880	814	1,335	699	636
24	1,930	974	956	1,373	677	696
<b>20-24</b>	<b>7,321</b>	<b>3,717</b>	<b>3,604</b>	<b>5,904</b>	<b>3,010</b>	<b>2,894</b>
25	2,383	1,218	1,165	1,592	797	795
26	2,756	1,447	1,309	1,586	832	754
27	3,300	1,694	1,606	1,623	824	799
28	3,901	1,952	1,949	1,606	774	832
29	4,353	2,316	2,037	1,485	787	698
<b>25-29</b>	<b>16,693</b>	<b>8,627</b>	<b>8,066</b>	<b>7,892</b>	<b>4,014</b>	<b>3,878</b>
30	4,923	2,488	2,435	1,450	752	698
31	5,593	2,887	2,706	1,319	671	648
32	5,722	2,965	2,757	1,237	660	577
33	5,344	2,732	2,612	1,018	511	507
34	5,182	2,591	2,591	932	433	499
<b>30-34</b>	<b>26,764</b>	<b>13,663</b>	<b>13,101</b>	<b>5,956</b>	<b>3,027</b>	<b>2,929</b>
35	4,722	2,433	2,289	778	402	376
36	4,179	2,091	2,088	674	368	306
37	3,529	1,790	1,739	610	314	296
38	2,998	1,537	1,461	506	248	258
39	2,298	1,210	1,088	424	243	181
<b>35-39</b>	<b>17,726</b>	<b>9,061</b>	<b>8,665</b>	<b>2,992</b>	<b>1,575</b>	<b>1,417</b>
40	1,554	804	750	304	168	136
41	1,010	505	505	227	115	112
42	618	321	297	134	72	62
43	325	177	148	73	41	32
44	151	77	74	37	21	16
<b>40-44</b>	<b>3,658</b>	<b>1,884</b>	<b>1,774</b>	<b>775</b>	<b>417</b>	<b>358</b>
<b>45 and over</b>	<b>169</b>	<b>75</b>	<b>94</b>	<b>28</b>	<b>13</b>	<b>15</b>
Age not stated	12	3	9	4	1	3

**Table 2.6 Total births in 2011 classified by area of residence and age of mother at maternity**

Area of residence	Under 20		20-24		25-29		30-34		35-39		40-44		45 & over		Age not stated	
	M	F	M	F	M	F	M	F	M	F	M	F	M	F	M	F
<b>STATE</b>	<b>868</b>	<b>822</b>	<b>3,717</b>	<b>3,604</b>	<b>8,627</b>	<b>8,066</b>	<b>13,663</b>	<b>13,101</b>	<b>9,061</b>	<b>8,665</b>	<b>1,884</b>	<b>1,774</b>	<b>75</b>	<b>94</b>	<b>3</b>	<b>9</b>
<b>LEINSTER</b>	<b>555</b>	<b>499</b>	<b>2,249</b>	<b>2,182</b>	<b>5,082</b>	<b>4,685</b>	<b>7,680</b>	<b>7,338</b>	<b>5,172</b>	<b>4,776</b>	<b>1,070</b>	<b>985</b>	<b>47</b>	<b>55</b>	<b>2</b>	<b>2</b>
Carlow	19	15	62	58	127	135	185	153	98	99	20	19	2	-	-	-
Dublin City	137	118	506	519	993	898	1,349	1,321	940	880	190	210	9	10	-	-
South Dublin	81	77	328	315	667	611	881	852	543	457	123	105	3	3	2	-
Fingal	50	57	241	244	641	612	1,053	1,018	677	667	155	131	5	10	-	1
Dun Laoghaire Rathdown	23	9	92	77	234	196	541	505	489	459	111	88	7	11	-	-
Kildare	36	32	150	145	429	433	728	718	541	445	92	89	5	8	-	-
Kilkenny	16	15	70	51	172	132	280	249	181	183	43	27	4	2	-	-
Laois	20	20	76	65	192	179	237	223	156	123	31	21	2	1	-	-
Longford	14	7	39	34	84	61	107	91	85	79	20	14	-	-	-	-
Louth	32	33	126	120	248	245	318	317	203	168	45	30	-	1	-	-
Meath	32	18	129	145	423	364	676	664	448	460	80	85	1	2	-	-
Offaly	16	18	85	85	137	163	229	214	130	112	26	26	3	-	-	-
Westmeath	19	16	84	68	169	171	276	247	136	145	25	30	2	1	-	-
Wexford	42	36	161	146	318	249	417	367	242	222	52	40	2	1	-	1
Wicklow	18	28	100	110	248	236	403	399	303	277	57	70	2	5	-	-
<b>MUNSTER</b>	<b>187</b>	<b>199</b>	<b>914</b>	<b>870</b>	<b>2,141</b>	<b>2,057</b>	<b>3,673</b>	<b>3,522</b>	<b>2,375</b>	<b>2,353</b>	<b>476</b>	<b>486</b>	<b>17</b>	<b>27</b>	<b>-</b>	<b>4</b>
Clare	16	17	86	66	175	146	317	329	227	234	50	62	1	2	-	-
Cork City	19	35	129	125	208	210	261	251	152	130	23	30	2	-	-	-
Cork County	40	36	225	228	648	664	1,370	1,330	929	883	184	160	7	8	-	1
Kerry	20	22	90	84	234	214	371	374	213	256	52	64	-	4	-	2
Limerick City	23	21	62	64	107	102	130	105	61	66	10	11	-	1	-	-
Limerick County	23	24	98	97	261	244	453	419	278	268	55	63	5	8	-	-
North Tipperary	10	10	50	58	138	122	230	183	164	162	32	32	-	2	-	-
South Tipperary	12	15	77	64	150	147	213	217	136	135	35	28	-	-	-	1
Waterford City	11	9	56	48	126	116	146	129	75	83	14	14	2	1	-	-
Waterford County	13	10	41	36	94	92	182	185	140	136	21	22	-	1	-	-
<b>CONNACHT</b>	<b>72</b>	<b>68</b>	<b>324</b>	<b>335</b>	<b>869</b>	<b>809</b>	<b>1,526</b>	<b>1,462</b>	<b>1,044</b>	<b>1,047</b>	<b>239</b>	<b>219</b>	<b>5</b>	<b>10</b>	<b>1</b>	<b>1</b>
Galway City	11	6	62	45	141	146	203	164	131	147	23	31	3	2	-	-
Galway County	20	18	101	118	274	251	547	556	402	376	96	95	-	2	-	-
Leitrim	4	8	17	18	54	47	78	92	50	59	16	17	-	1	-	-
Mayo	19	18	78	77	208	179	335	345	214	232	56	43	1	2	-	-
Roscommon	7	9	32	35	98	88	173	154	107	116	25	17	-	2	1	1
Sligo	11	9	34	42	94	98	190	151	140	117	23	16	1	1	-	-
<b>ULSTER (PART OF)</b>	<b>54</b>	<b>56</b>	<b>230</b>	<b>217</b>	<b>535</b>	<b>515</b>	<b>784</b>	<b>779</b>	<b>470</b>	<b>489</b>	<b>99</b>	<b>84</b>	<b>6</b>	<b>2</b>	<b>-</b>	<b>2</b>
Cavan	18	15	63	55	157	153	226	223	148	151	26	30	2	-	-	-
Donegal	26	31	120	124	270	256	403	387	218	234	53	43	4	2	-	1
Monaghan	10	10	47	38	108	106	155	169	104	104	20	11	-	-	-	1
<b>REGIONAL AUTHORITIES:</b>																
Border	101	106	407	397	931	905	1,370	1,339	863	833	183	147	7	5	-	2
Midland	69	61	284	252	582	574	849	775	507	459	102	91	7	2	-	-
West	57	51	273	275	721	664	1,258	1,219	854	871	200	186	4	8	1	1
Dublin	291	261	1,167	1,155	2,535	2,317	3,824	3,696	2,649	2,463	579	534	24	34	2	1
Mid-East	86	78	379	400	1,100	1,033	1,807	1,781	1,292	1,182	229	244	8	15	-	-
Mid-West	72	72	296	285	681	614	1,130	1,036	730	730	147	168	6	13	-	-
South-East	113	100	467	403	987	871	1,423	1,300	872	858	185	150	10	5	-	2
South-West	79	93	444	437	1,090	1,088	2,002	1,955	1,294	1,269	259	254	9	12	-	3

**Table 2.7 Births outside marriage/civil partnership in 2011 classified by area of residence and age of mother at maternity**

Area of residence	Under 25		25-29		30-34		35-39		40 & over		Age not stated		All ages	
	M	F	M	F	M	F	M	F	M	F	M	F	M	F
<b>STATE</b>	<b>3,794</b>	<b>3,650</b>	<b>4,014</b>	<b>3,878</b>	<b>3,027</b>	<b>2,929</b>	<b>1,575</b>	<b>1,417</b>	<b>430</b>	<b>373</b>	<b>1</b>	<b>3</b>	<b>12,841</b>	<b>12,250</b>
<b>LEINSTER</b>	<b>2,319</b>	<b>2,206</b>	<b>2,467</b>	<b>2,346</b>	<b>1,837</b>	<b>1,796</b>	<b>981</b>	<b>850</b>	<b>265</b>	<b>223</b>	-	-	<b>7,869</b>	<b>7,421</b>
Carlow	68	58	62	62	35	31	18	12	2	5	-	-	185	168
Dublin City	537	522	537	488	411	416	245	212	58	63	-	-	1,788	1,701
South Dublin	322	319	341	361	247	237	123	101	37	30	-	-	1,070	1,048
Fingal	236	242	275	304	239	229	116	120	36	23	-	-	902	918
Dun Laoghaire Rathdown	100	71	101	85	110	94	72	59	22	23	-	-	405	332
Kildare	156	151	197	208	133	139	91	67	20	15	-	-	597	580
Kilkenny	73	60	82	60	61	43	18	20	7	5	-	-	241	188
Laois	85	70	84	78	57	65	29	13	7	3	-	-	262	229
Longford	37	29	33	31	21	26	16	14	2	-	-	-	109	100
Louth	140	135	132	130	97	86	38	33	10	4	-	-	417	388
Meath	130	133	177	142	116	131	71	70	18	13	-	-	512	489
Offaly	86	85	63	67	44	49	23	14	4	7	-	-	220	222
Westmeath	83	60	75	81	55	52	19	24	10	6	-	-	242	223
Wexford	164	156	169	125	117	109	51	44	13	8	-	-	514	442
Wicklow	102	115	139	124	94	89	51	47	19	18	-	-	405	393
<b>MUNSTER</b>	<b>927</b>	<b>907</b>	<b>1,017</b>	<b>967</b>	<b>752</b>	<b>720</b>	<b>373</b>	<b>350</b>	<b>103</b>	<b>90</b>	-	<b>2</b>	<b>3,172</b>	<b>3,036</b>
Clare	83	69	68	65	64	69	35	33	7	12	-	-	257	248
Cork City	128	135	108	116	82	71	40	29	9	10	-	-	367	361
Cork County	227	229	272	281	222	223	119	108	34	28	-	-	874	869
Kerry	92	83	104	100	85	73	28	43	16	17	-	1	325	317
Limerick City	72	71	57	54	42	37	11	19	6	3	-	-	188	184
Limerick County	98	102	130	106	78	70	41	37	10	8	-	-	357	323
North Tipperary	48	57	70	69	31	33	27	21	4	2	-	-	180	182
South Tipperary	79	67	75	72	65	60	25	17	4	3	-	1	248	220
Waterford City	54	53	79	52	42	38	18	23	8	2	-	-	201	168
Waterford County	46	41	54	52	41	46	29	20	5	5	-	-	175	164
<b>CONNACHT</b>	<b>307</b>	<b>306</b>	<b>319</b>	<b>356</b>	<b>292</b>	<b>253</b>	<b>149</b>	<b>145</b>	<b>49</b>	<b>43</b>	<b>1</b>	-	<b>1,117</b>	<b>1,103</b>
Galway City	48	29	43	63	37	41	25	28	8	10	-	-	161	171
Galway County	97	104	102	100	96	87	51	45	22	15	-	-	368	351
Leitrim	17	22	20	19	11	10	6	11	2	4	-	-	56	66
Mayo	73	70	75	76	72	62	22	30	7	5	-	-	249	243
Roscommon	34	35	36	42	28	22	14	16	4	5	1	-	117	120
Sligo	38	46	43	56	48	31	31	15	6	4	-	-	166	152
<b>ULSTER (PART OF)</b>	<b>241</b>	<b>231</b>	<b>211</b>	<b>209</b>	<b>146</b>	<b>160</b>	<b>72</b>	<b>72</b>	<b>13</b>	<b>17</b>	-	<b>1</b>	<b>683</b>	<b>690</b>
Cavan	60	57	54	66	38	43	28	21	-	6	-	-	180	193
Donegal	130	132	116	101	80	87	28	36	9	7	-	1	363	364
Monaghan	51	42	41	42	28	30	16	15	4	4	-	-	140	133
<b>REGIONAL AUTHORITIES:</b>														
Border	436	434	406	414	302	287	147	131	31	29	-	1	1,322	1,296
Midland	291	244	255	257	177	192	87	65	23	16	-	-	833	774
West	252	238	256	281	233	212	112	119	41	35	1	-	895	885
Dublin	1,195	1,154	1,254	1,238	1,007	976	556	492	153	139	-	-	4,165	3,999
Mid-East	388	399	513	474	343	359	213	184	57	46	-	-	1,514	1,462
Mid-West	301	299	325	294	215	209	114	110	27	25	-	-	982	937
South-East	484	435	521	423	361	327	159	136	39	28	-	1	1,564	1,350
South-West	447	447	484	497	389	367	187	180	59	55	-	1	1,566	1,547

**Table 2.8 Total births in 2011, classified by age of mother at maternity and number of previous liveborn children**

Age of mother at maternity	Number of previous liveborn children												
	Total	0	1	2	3	4	5	6	7	8	9	10 or more	Not stated
<b>All ages</b>	<b>74,033</b>	<b>29,210</b>	<b>25,158</b>	<b>12,631</b>	<b>4,410</b>	<b>1,378</b>	<b>507</b>	<b>185</b>	<b>84</b>	<b>58</b>	<b>21</b>	<b>20</b>	<b>371</b>
<b>15 and under</b>	<b>36</b>	<b>34</b>	<b>2</b>	-	-	-	-	-	-	-	-	-	-
16	103	102	1	-	-	-	-	-	-	-	-	-	-
17	252	242	9	1	-	-	-	-	-	-	-	-	-
18	462	409	47	6	-	-	-	-	-	-	-	-	-
19	837	711	111	11	2	-	-	-	-	-	-	-	2
<b>Under 20</b>	<b>1,690</b>	<b>1,498</b>	<b>170</b>	<b>18</b>	<b>2</b>	-	-	-	-	-	-	-	<b>2</b>
20	1,099	846	204	38	6	1	-	-	-	-	-	-	4
21	1,234	840	333	50	3	1	-	1	-	-	-	-	6
22	1,364	843	403	91	14	4	1	-	-	-	-	-	8
23	1,694	974	545	126	35	3	2	-	-	-	-	-	9
24	1,930	1,014	692	163	43	12	1	-	-	-	-	-	5
<b>20-24</b>	<b>7,321</b>	<b>4,517</b>	<b>2,177</b>	<b>468</b>	<b>101</b>	<b>21</b>	<b>4</b>	<b>1</b>	-	-	-	-	<b>32</b>
25	2,383	1,239	791	252	76	13	2	-	-	-	-	-	10
26	2,756	1,344	950	321	97	28	5	1	-	-	-	-	10
27	3,300	1,571	1,150	394	125	35	5	1	-	1	-	-	18
28	3,901	1,858	1,317	500	147	41	18	3	-	-	-	-	17
29	4,353	2,026	1,440	565	195	68	22	9	3	1	1	-	23
<b>25-29</b>	<b>16,693</b>	<b>8,038</b>	<b>5,648</b>	<b>2,032</b>	<b>640</b>	<b>185</b>	<b>52</b>	<b>14</b>	<b>3</b>	<b>2</b>	<b>1</b>	-	<b>78</b>
30	4,923	2,248	1,689	637	213	66	25	12	3	2	2	-	26
31	5,593	2,400	2,020	786	223	83	44	10	3	1	1	-	22
32	5,722	2,170	2,135	936	302	97	30	13	3	3	1	-	32
33	5,344	1,787	2,072	994	303	90	38	15	7	5	1	-	32
34	5,182	1,548	2,022	1,094	334	96	38	19	4	2	3	-	22
<b>30-34</b>	<b>26,764</b>	<b>10,153</b>	<b>9,938</b>	<b>4,447</b>	<b>1,375</b>	<b>432</b>	<b>175</b>	<b>69</b>	<b>20</b>	<b>13</b>	<b>8</b>	-	<b>134</b>
35	4,722	1,248	1,789	1,131	356	109	40	12	4	6	1	1	25
36	4,179	1,018	1,465	1,088	401	111	41	13	11	9	2	2	18
37	3,529	819	1,175	933	414	103	44	12	9	3	1	1	15
38	2,998	595	950	878	370	114	36	16	4	5	4	5	21
39	2,298	454	707	676	289	95	31	13	9	3	-	4	17
<b>35-39</b>	<b>17,726</b>	<b>4,134</b>	<b>6,086</b>	<b>4,706</b>	<b>1,830</b>	<b>532</b>	<b>192</b>	<b>66</b>	<b>37</b>	<b>26</b>	<b>8</b>	<b>13</b>	<b>96</b>
40	1,554	326	497	395	200	68	24	9	8	6	1	3	17
41	1,010	218	274	278	117	63	29	11	8	5	3	-	4
42	618	158	190	152	70	24	10	4	3	3	-	1	3
43	325	70	91	75	39	28	10	6	2	1	-	1	2
44	151	38	42	29	14	14	6	1	2	1	-	2	2
<b>40-44</b>	<b>3,658</b>	<b>810</b>	<b>1,094</b>	<b>929</b>	<b>440</b>	<b>197</b>	<b>79</b>	<b>31</b>	<b>23</b>	<b>16</b>	<b>4</b>	<b>7</b>	<b>28</b>
<b>45 and over</b>	<b>169</b>	<b>54</b>	<b>42</b>	<b>28</b>	<b>22</b>	<b>11</b>	<b>5</b>	<b>4</b>	<b>1</b>	<b>1</b>	-	-	<b>1</b>
Age not stated	12	6	3	3	-	-	-	-	-	-	-	-	-



**Table 2.9 Births outside marriage/civil partnership in 2011, classified by age of mother at maternity and number of previous liveborn children**

Age of mother at maternity	Number of previous liveborn children												
	Total	0	1	2	3	4	5	6	7	8	9	10 or more	Not stated
<b>All ages</b>	<b>25,091</b>	<b>12,732</b>	<b>7,590</b>	<b>2,955</b>	<b>1,066</b>	<b>385</b>	<b>161</b>	<b>50</b>	<b>25</b>	<b>13</b>	<b>4</b>	<b>2</b>	<b>108</b>
<b>15 and under</b>	<b>36</b>	<b>34</b>	<b>2</b>	-	-	-	-	-	-	-	-	-	-
16	102	101	1	-	-	-	-	-	-	-	-	-	-
17	239	230	8	1	-	-	-	-	-	-	-	-	-
18	418	373	40	5	-	-	-	-	-	-	-	-	-
19	745	635	97	9	2	-	-	-	-	-	-	-	2
<b>Under 20</b>	<b>1,540</b>	<b>1,373</b>	<b>148</b>	<b>15</b>	<b>2</b>	-	-	-	-	-	-	-	<b>2</b>
20	997	789	170	30	4	1	-	-	-	-	-	-	3
21	1,067	749	275	33	3	1	-	1	-	-	-	-	5
22	1,132	733	313	64	12	3	1	-	-	-	-	-	6
23	1,335	807	406	87	23	3	2	-	-	-	-	-	7
24	1,373	735	488	114	23	9	-	-	-	-	-	-	4
<b>20-24</b>	<b>5,904</b>	<b>3,813</b>	<b>1,652</b>	<b>328</b>	<b>65</b>	<b>17</b>	<b>3</b>	<b>1</b>	-	-	-	-	<b>25</b>
25	1,592	855	517	163	46	4	1	-	-	-	-	-	6
26	1,586	790	540	191	43	11	3	-	-	-	-	-	8
27	1,623	745	588	199	54	22	4	1	-	-	-	-	10
28	1,606	740	551	219	67	19	6	1	-	-	-	-	3
29	1,485	661	472	225	86	24	7	4	2	-	-	-	4
<b>25-29</b>	<b>7,892</b>	<b>3,791</b>	<b>2,668</b>	<b>997</b>	<b>296</b>	<b>80</b>	<b>21</b>	<b>6</b>	<b>2</b>	-	-	-	<b>31</b>
30	1,450	636	465	215	80	29	11	6	1	1	1	-	5
31	1,319	557	437	198	70	33	14	3	-	1	1	-	5
32	1,237	471	411	210	89	31	13	2	2	1	-	-	7
33	1,018	387	339	163	72	34	12	4	2	-	-	-	5
34	932	348	324	146	64	24	10	7	2	2	1	-	4
<b>30-34</b>	<b>5,956</b>	<b>2,399</b>	<b>1,976</b>	<b>932</b>	<b>375</b>	<b>151</b>	<b>60</b>	<b>22</b>	<b>7</b>	<b>5</b>	<b>3</b>	-	<b>26</b>
35	778	292	250	138	56	25	9	3	-	-	-	-	5
36	674	253	204	110	61	16	16	1	3	3	-	-	7
37	610	219	178	107	61	23	12	4	4	-	-	-	2
38	506	165	152	98	45	22	11	5	2	1	1	-	4
39	424	150	138	73	31	14	8	4	2	1	-	1	2
<b>35-39</b>	<b>2,992</b>	<b>1,079</b>	<b>922</b>	<b>526</b>	<b>254</b>	<b>100</b>	<b>56</b>	<b>17</b>	<b>11</b>	<b>5</b>	<b>1</b>	<b>1</b>	<b>20</b>
40	304	109	94	51	27	12	4	-	3	1	-	-	3
41	227	82	59	48	19	9	9	1	-	-	-	-	-
42	134	46	37	27	13	4	4	-	1	1	-	-	1
43	73	16	20	17	9	6	2	2	-	-	-	1	-
44	37	7	9	9	4	5	2	-	1	-	-	-	-
<b>40-44</b>	<b>775</b>	<b>260</b>	<b>219</b>	<b>152</b>	<b>72</b>	<b>36</b>	<b>21</b>	<b>3</b>	<b>5</b>	<b>2</b>	-	<b>1</b>	<b>4</b>
<b>45 and over</b>	<b>28</b>	<b>14</b>	<b>4</b>	<b>5</b>	<b>2</b>	<b>1</b>	-	<b>1</b>	-	<b>1</b>	-	-	-
Age not stated	4	3	1	-	-	-	-	-	-	-	-	-	-

**Table 2.10 Births within marriage/civil partnership in 2011, classified by age of mother at maternity and year of marriage/civil partnership**

Age of mother at maternity	Total	Births within marriage/civil partnership: the year of marriage/civil partnership being												
		2011	2010	2009	2008	2007	2006	2005	2004	2003	2002	2001	2000 & earlier	Not stated
<b>All ages</b>	<b>48,942</b>	<b>734</b>	<b>6,237</b>	<b>6,375</b>	<b>6,322</b>	<b>5,864</b>	<b>4,780</b>	<b>4,030</b>	<b>3,057</b>	<b>2,548</b>	<b>1,830</b>	<b>1,438</b>	<b>3,638</b>	<b>2,089</b>
<b>15 and under</b>	-	-	-	-	-	-	-	-	-	-	-	-	-	-
16	1	-	1	-	-	-	-	-	-	-	-	-	-	-
17	13	3	8	2	-	-	-	-	-	-	-	-	-	-
18	44	10	20	5	2	-	1	-	-	-	-	-	-	6
19	92	9	47	13	6	1	-	-	-	-	-	-	-	16
<b>Under 20</b>	<b>150</b>	<b>22</b>	<b>76</b>	<b>20</b>	<b>8</b>	<b>1</b>	<b>1</b>	-	-	-	-	-	-	<b>22</b>
20	102	4	35	26	15	6	3	-	-	-	-	-	1	12
21	167	7	43	39	33	17	5	1	-	-	-	-	-	22
22	232	16	51	47	48	28	15	5	-	-	-	-	-	22
23	359	23	80	77	59	38	26	17	6	-	1	-	-	32
24	557	28	128	113	91	66	41	22	11	9	3	-	1	44
<b>20-24</b>	<b>1,417</b>	<b>78</b>	<b>337</b>	<b>302</b>	<b>246</b>	<b>155</b>	<b>90</b>	<b>45</b>	<b>17</b>	<b>9</b>	<b>4</b>	-	<b>2</b>	<b>132</b>
25	791	49	179	156	122	85	54	42	26	21	4	4	1	48
26	1,170	49	288	249	184	117	72	57	33	32	14	10	5	60
27	1,677	43	416	349	247	199	110	85	46	42	37	17	9	77
28	2,295	60	497	490	388	284	153	122	83	37	34	32	24	91
29	2,868	53	587	560	472	360	248	159	102	75	44	29	54	125
<b>25-29</b>	<b>8,801</b>	<b>254</b>	<b>1,967</b>	<b>1,804</b>	<b>1,413</b>	<b>1,045</b>	<b>637</b>	<b>465</b>	<b>290</b>	<b>207</b>	<b>133</b>	<b>92</b>	<b>93</b>	<b>401</b>
30	3,473	38	651	628	570	512	326	224	135	90	50	51	60	138
31	4,274	53	659	724	745	607	460	306	207	137	77	54	102	143
32	4,485	44	603	663	648	671	491	416	272	182	110	73	140	172
33	4,326	44	451	513	624	653	501	423	288	237	144	105	180	163
34	4,250	45	413	470	525	549	533	444	333	269	185	123	228	133
<b>30-34</b>	<b>20,808</b>	<b>224</b>	<b>2,777</b>	<b>2,998</b>	<b>3,112</b>	<b>2,992</b>	<b>2,311</b>	<b>1,813</b>	<b>1,235</b>	<b>915</b>	<b>566</b>	<b>406</b>	<b>710</b>	<b>749</b>
35	3,944	39	318	354	437	466	466	424	333	290	210	171	298	138
36	3,505	32	242	251	324	348	382	393	364	308	211	163	350	137
37	2,919	19	166	197	243	282	259	288	269	263	201	165	425	142
38	2,492	24	114	150	213	199	240	229	217	207	197	137	443	122
39	1,874	16	95	111	130	142	159	156	130	168	114	145	429	79
<b>35-39</b>	<b>14,734</b>	<b>130</b>	<b>935</b>	<b>1,063</b>	<b>1,347</b>	<b>1,437</b>	<b>1,506</b>	<b>1,490</b>	<b>1,313</b>	<b>1,236</b>	<b>933</b>	<b>781</b>	<b>1,945</b>	<b>618</b>
40	1,250	7	62	82	85	99	104	104	95	80	86	65	321	60
41	783	10	39	38	41	56	69	50	54	43	46	50	240	47
42	484	5	23	37	39	31	29	36	27	33	26	27	143	28
43	252	2	9	14	15	30	20	9	13	11	21	8	83	17
44	114	1	6	4	4	8	5	7	7	5	8	4	51	4
<b>40-44</b>	<b>2,883</b>	<b>25</b>	<b>139</b>	<b>175</b>	<b>184</b>	<b>224</b>	<b>227</b>	<b>206</b>	<b>196</b>	<b>172</b>	<b>187</b>	<b>154</b>	<b>838</b>	<b>156</b>
<b>45 and over</b>	<b>141</b>	<b>1</b>	<b>6</b>	<b>12</b>	<b>12</b>	<b>9</b>	<b>8</b>	<b>10</b>	<b>6</b>	<b>8</b>	<b>6</b>	<b>4</b>	<b>50</b>	<b>9</b>
Age not stated	8	-	-	1	-	1	-	1	-	1	1	1	-	2

**Table 2.11 First births within marriage/civil partnership in 2011, classified by age of mother at maternity and year of marriage/civil partnership**

Age of mother at maternity	Total	First births within marriage/civil partnership: the year of marriage/civil partnership being												
		2011	2010	2009	2008	2007	2006	2005	2004	2003	2002	2001	2000 & earlier	Not stated
<b>All ages</b>	<b>16,478</b>	<b>501</b>	<b>4,495</b>	<b>4,197</b>	<b>2,560</b>	<b>1,458</b>	<b>886</b>	<b>539</b>	<b>378</b>	<b>238</b>	<b>142</b>	<b>96</b>	<b>224</b>	<b>764</b>
<b>15 and under</b>	-	-	-	-	-	-	-	-	-	-	-	-	-	-
16	1	-	1	-	-	-	-	-	-	-	-	-	-	-
17	12	3	7	2	-	-	-	-	-	-	-	-	-	-
18	36	10	18	2	-	-	-	-	-	-	-	-	-	6
19	76	8	42	10	2	-	-	-	-	-	-	-	-	14
<b>Under 20</b>	<b>125</b>	<b>21</b>	<b>68</b>	<b>14</b>	<b>2</b>	-	-	-	-	-	-	-	-	<b>20</b>
20	57	3	29	15	1	1	-	-	-	-	-	-	-	8
21	91	7	33	23	9	6	1	1	-	-	-	-	-	11
22	110	11	40	24	12	6	3	-	-	-	-	-	-	14
23	167	16	57	42	23	8	4	1	-	-	-	-	-	16
24	279	22	91	67	45	13	10	1	1	1	-	-	-	28
<b>20-24</b>	<b>704</b>	<b>59</b>	<b>250</b>	<b>171</b>	<b>90</b>	<b>34</b>	<b>18</b>	<b>3</b>	<b>1</b>	<b>1</b>	-	-	-	<b>77</b>
25	384	38	124	98	60	26	8	3	3	1	1	-	1	21
26	554	35	191	148	81	43	17	10	2	2	-	-	1	24
27	826	28	285	237	122	54	30	20	2	4	-	4	1	39
28	1,118	44	350	342	187	82	30	26	8	2	5	3	5	34
29	1,365	42	398	400	230	115	65	26	16	8	3	3	3	56
<b>25-29</b>	<b>4,247</b>	<b>187</b>	<b>1,348</b>	<b>1,225</b>	<b>680</b>	<b>320</b>	<b>150</b>	<b>85</b>	<b>31</b>	<b>17</b>	<b>9</b>	<b>10</b>	<b>11</b>	<b>174</b>
30	1,612	26	475	454	266	162	77	41	26	6	6	2	2	69
31	1,843	39	504	526	338	148	99	56	31	19	11	7	8	57
32	1,699	29	455	471	278	178	82	60	35	22	9	7	4	69
33	1,400	27	320	347	253	163	84	43	39	22	11	9	17	65
34	1,200	26	308	299	188	103	96	50	35	27	16	3	5	44
<b>30-34</b>	<b>7,754</b>	<b>147</b>	<b>2,062</b>	<b>2,097</b>	<b>1,323</b>	<b>754</b>	<b>438</b>	<b>250</b>	<b>166</b>	<b>96</b>	<b>53</b>	<b>28</b>	<b>36</b>	<b>304</b>
35	956	26	241	205	155	84	76	36	34	20	12	12	12	43
36	765	20	170	155	94	71	57	47	49	29	13	10	17	33
37	600	8	125	110	73	68	36	36	29	22	17	11	26	39
38	430	15	85	75	52	42	30	25	25	16	12	7	30	16
39	304	6	65	48	34	26	30	16	14	11	9	7	20	18
<b>35-39</b>	<b>3,055</b>	<b>75</b>	<b>686</b>	<b>593</b>	<b>408</b>	<b>291</b>	<b>229</b>	<b>160</b>	<b>151</b>	<b>98</b>	<b>63</b>	<b>47</b>	<b>105</b>	<b>149</b>
40	217	4	38	40	22	12	21	22	7	13	3	4	20	11
41	136	4	21	17	11	18	13	7	12	1	3	4	16	9
42	112	1	12	21	9	10	8	7	6	7	3	1	18	9
43	54	1	6	8	7	11	4	1	1	1	4	1	3	6
44	31	1	3	2	3	4	4	1	3	2	1	-	6	1
<b>40-44</b>	<b>550</b>	<b>11</b>	<b>80</b>	<b>88</b>	<b>52</b>	<b>55</b>	<b>50</b>	<b>38</b>	<b>29</b>	<b>24</b>	<b>14</b>	<b>10</b>	<b>63</b>	<b>36</b>
<b>45 and over</b>	<b>40</b>	<b>1</b>	<b>1</b>	<b>8</b>	<b>5</b>	<b>4</b>	<b>1</b>	<b>3</b>	-	<b>2</b>	<b>3</b>	<b>1</b>	<b>9</b>	<b>2</b>
Age not stated	3	-	-	1	-	-	-	-	-	-	-	-	-	2

**Table 2.12 Births in 2011, classified by period of gestation and age of mother at maternity**

Period of gestation in weeks	Age of mother at maternity									
	All ages	15 and under	16-19	20-24	25-29	30-34	35-39	40-44	45 years and over	Age not stated
<b>Total</b>	<b>74,033</b>	<b>36</b>	<b>1,654</b>	<b>7,321</b>	<b>16,693</b>	<b>26,764</b>	<b>17,726</b>	<b>3,658</b>	<b>169</b>	<b>12</b>
Under 28	235	-	6	20	46	87	62	13	1	-
28-31	499	-	18	47	106	191	88	43	6	-
32-35	1,970	-	39	179	422	670	495	149	16	-
36-39	30,000	17	586	2,569	6,220	10,663	8,031	1,808	101	5
40 and over	39,921	18	966	4,334	9,566	14,658	8,743	1,585	44	7
Not stated	1,408	1	39	172	333	495	307	60	1	-

**Table 2.13 Births in 2011, classified by age of mother at maternity and birthweight**

Birthweight in grams	Age of mother at maternity									
	All ages	15 and under	16-19	20-24	25-29	30-34	35-39	40-44	45 years and over	Age not stated
<b>Total</b>	<b>74,033</b>	<b>36</b>	<b>1,654</b>	<b>7,321</b>	<b>16,693</b>	<b>26,764</b>	<b>17,726</b>	<b>3,658</b>	<b>169</b>	<b>12</b>
Under 1000	226	-	10	20	43	86	54	12	1	-
1000-1499	373	1	7	27	80	125	87	37	9	-
1500-1999	871	-	18	95	181	311	204	56	6	-
2000-2499	2,348	-	73	260	508	760	563	173	10	1
2500-2999	8,609	9	277	1,090	2,110	2,809	1,820	452	41	1
3000-3499	23,768	14	626	2,575	5,567	8,348	5,446	1,142	46	4
3500-3999	25,371	10	480	2,351	5,599	9,506	6,194	1,186	40	5
4000 and over	12,016	2	150	859	2,509	4,649	3,261	570	15	1
Not stated	451	-	13	44	96	170	97	30	1	-

**Table 2.14 Births in 2011, classified by period of gestation and birthweight**

Birthweight in grams	Period of gestation in weeks						
	Total	Under 28	28-31	32-35	36-39	40 & over	Not stated
<b>Total</b>	<b>74,033</b>	<b>235</b>	<b>499</b>	<b>1,970</b>	<b>30,000</b>	<b>39,921</b>	<b>1,408</b>
Under 1000	226	179	36	1	3	3	4
1000-1499	373	48	222	94	4	2	3
1500-1999	871	1	195	488	170	5	12
2000-2499	2,348	-	20	792	1,391	111	34
2500-2999	8,609	2	7	467	5,926	2,086	121
3000-3499	23,768	-	8	97	11,498	11,813	352
3500-3999	25,371	-	8	20	8,305	16,638	400
4000 and over	12,016	-	-	7	2,629	9,180	200
Not stated	451	5	3	4	74	83	282

**Table 2.15 Births in 2011, classified by sex of infant and birthweight**

Sex of infant	Birthweight in grams									
	Total	Under 1000	1000-1499	1500-1999	2000-2499	2500-2999	3000-3499	3500-3999	4000 and over	Not stated
<b>Total</b>	<b>74,033</b>	<b>226</b>	<b>373</b>	<b>871</b>	<b>2,348</b>	<b>8,609</b>	<b>23,768</b>	<b>25,371</b>	<b>12,016</b>	<b>451</b>
Male	37,898	124	206	429	1,052	3,814	11,023	13,616	7,426	208
Female	36,135	102	167	442	1,296	4,795	12,745	11,755	4,590	243

**Table 2.16 Births in 2011, classified by sex of infant and period of gestation**

Sex of infant	Period of gestation in weeks						
	Total	Under 28	28-31	32-35	36-39	40 & over	Not stated
<b>Total</b>	<b>74,033</b>	<b>235</b>	<b>499</b>	<b>1,970</b>	<b>30,000</b>	<b>39,921</b>	<b>1,408</b>
Male	37,898	142	280	1,070	15,407	20,309	690
Female	36,135	93	219	900	14,593	19,612	718

**Table 2.17 Births in 2011 showing place of occurrence and area of normal residence**

Area	Hospital births				Domiciliary births			
	Total number registered	Number transferred from area	Number transferred to area	Net number	Total number registered	Number transferred from area	Number transferred to area	Net number
<b>STATE</b>	<b>73,699</b>	-	-	<b>73,669</b>	<b>334</b>	-	-	<b>334</b>
<b>LEINSTER</b>	<b>41,495</b>	<b>1,085</b>	<b>1,802</b>	<b>42,212</b>	<b>162</b>	<b>1</b>	<b>5</b>	<b>166</b>
Carlow	-	-	990	990	1	-	1	2
Dublin City	27,321	19,447	176	8,050	51	29	8	30
South Dublin	-	-	5,034	5,034	10	6	9	13
Fingal	-	-	5,541	5,541	35	28	14	21
Dun Laoghaire Rathdown	1,114	776	2,472	2,810	3	-	29	32
Kildare	-	-	3,842	3,842	6	3	6	9
Kilkenny	2,044	999	379	1,424	2	2	1	1
Laois	2,244	1,099	201	1,346	6	6	-	-
Longford	-	-	632	632	2	-	1	3
Louth	3,778	2,034	132	1,876	14	4	-	10
Meath	-	-	3,517	3,517	5	-	5	10
Offaly	-	-	1,236	1,236	2	-	6	8
Westmeath	2,776	1,800	410	1,386	7	4	-	3
Wexford	2,218	270	341	2,289	9	2	-	7
Wicklow	-	-	2,239	2,239	9	1	9	17
<b>MUNSTER</b>	<b>19,219</b>	<b>770</b>	<b>743</b>	<b>19,192</b>	<b>111</b>	<b>3</b>	<b>1</b>	<b>109</b>
Clare	-	-	1,713	1,713	12	-	3	15
Cork City	8,730	7,178	9	1,561	50	37	1	14
Cork County	-	-	6,668	6,668	10	1	36	45
Kerry	1,745	113	352	1,984	16	-	-	16
Limerick City	5,116	4,368	11	759	11	7	-	4
Limerick County	-	-	2,290	2,290	3	1	4	6
North Tipperary	-	-	1,191	1,191	1	-	1	2
South Tipperary	1,236	281	273	1,228	3	1	-	2
Waterford City	2,392	1,576	13	829	1	1	1	1
Waterford County	-	-	969	969	4	1	1	4
<b>CONNACHT</b>	<b>8,939</b>	<b>1,240</b>	<b>285</b>	<b>7,984</b>	<b>51</b>	<b>3</b>	<b>-</b>	<b>48</b>
Galway City	3,403	2,326	30	1,107	29	21	-	8
Galway County	2,136	1,426	2,125	2,835	-	-	21	21
Leitrim	-	-	457	457	4	2	2	4
Mayo	1,828	177	143	1,794	13	-	-	13
Roscommon	-	-	865	865	1	1	1	1
Sligo	1,572	689	43	926	4	3	-	1
<b>ULSTER (PART OF)</b>	<b>4,046</b>	<b>359</b>	<b>624</b>	<b>4,311</b>	<b>10</b>	<b>-</b>	<b>1</b>	<b>11</b>
Cavan	2,049	923	139	1,265	2	-	-	2
Donegal	1,997	12	180	2,165	6	-	1	7
Monaghan	-	-	881	881	2	-	-	2
<b>REGIONAL AUTHORITIES:</b>								
Border	9,396	2,166	340	7,570 #	32	6	-	26
Midland	5,020	1,600	1,180	4,600 #	17	4	1	14
West	7,367	1,106	340	6,601 #	43	2	2	43
Dublin	28,435	7,439	439	21,435 #	99	9	6	96
Mid-East	-	-	9,598	9,598 #	20	3	19	36
Mid-West	5,116	187	1,024	5,953 #	27	-	-	27
South-East	7,890	760	599	7,729 #	20	3	-	17
South-West	10,475	378	116	10,213 #	76	2	1	75

**Table 2.18 Births in 2011 by day of occurrence and mothers' usual residence**

Area of residence	Day of occurrence						
	Monday	Tuesday	Wednesday	Thursday	Friday	Saturday	Sunday
<b>STATE</b>	<b>10,492</b>	<b>11,720</b>	<b>12,043</b>	<b>12,050</b>	<b>11,676</b>	<b>8,685</b>	<b>7,367</b>
<b>LEINSTER</b>	<b>5,964</b>	<b>6,560</b>	<b>6,788</b>	<b>6,924</b>	<b>6,591</b>	<b>5,128</b>	<b>4,424</b>
Carlow	135	152	163	185	116	127	114
Dublin City	1,176	1,192	1,303	1,224	1,282	1,008	895
South Dublin	742	759	800	833	782	610	522
Fingal	769	885	919	840	837	700	612
Dun Laoghaire Rathdown	404	425	465	477	440	332	299
Kildare	554	583	617	644	628	446	379
Kilkenny	184	230	234	261	191	151	174
Laois	169	194	181	245	249	173	135
Longford	75	115	114	104	114	65	48
Louth	255	306	296	318	304	213	194
Meath	512	571	579	588	534	425	318
Offaly	197	215	187	207	186	143	109
Westmeath	197	224	229	262	216	147	114
Wexford	303	352	325	396	368	302	250
Wicklow	292	357	376	340	344	286	261
<b>MUNSTER</b>	<b>2,738</b>	<b>3,209</b>	<b>3,249</b>	<b>3,054</b>	<b>3,098</b>	<b>2,182</b>	<b>1,771</b>
Clare	217	295	303	294	286	181	152
Cork City	234	261	257	246	254	185	138
Cork County	963	1,064	1,125	1,079	1,142	745	595
Kerry	271	356	282	316	322	232	221
Limerick City	107	136	137	123	111	84	65
Limerick County	305	424	382	379	369	245	192
North Tipperary	166	217	193	206	158	139	114
South Tipperary	187	201	245	154	186	150	107
Waterford City	134	114	158	115	117	94	98
Waterford County	154	141	167	142	153	127	89
<b>CONNACHT</b>	<b>1,191</b>	<b>1,293</b>	<b>1,318</b>	<b>1,259</b>	<b>1,297</b>	<b>901</b>	<b>772</b>
Galway City	179	175	177	176	166	136	106
Galway County	417	486	466	453	464	311	259
Leitrim	60	83	66	68	87	54	43
Mayo	282	283	304	271	274	212	181
Roscommon	135	120	154	141	147	85	83
Sligo	118	146	151	150	159	103	100
<b>ULSTER (PART OF)</b>	<b>599</b>	<b>658</b>	<b>688</b>	<b>813</b>	<b>690</b>	<b>474</b>	<b>400</b>
Cavan	192	197	204	229	200	140	105
Donegal	274	323	346	436	339	239	215
Monaghan	133	138	138	148	151	95	80
<b>REGIONAL AUTHORITIES:</b>							
Border	1,032	1,193	1,201	1,349	1,240	844	737
Midland	638	748	711	818	765	528	406
West	1,013	1,064	1,101	1,041	1,051	744	629
Dublin	3,091	3,261	3,487	3,374	3,341	2,650	2,328
Mid-East	1,358	1,511	1,572	1,572	1,506	1,157	958
Mid-West	795	1,072	1,015	1,002	924	649	523
South-East	1,097	1,190	1,292	1,253	1,131	951	832
South-West	1,468	1,681	1,664	1,641	1,718	1,162	954

**Table 2.19 Births per 1,000 women in each age-group, Ireland, England and Wales, 2011**

Age of mother	Total Births per 1,000 women		Births (within marriage/civil partnership) per 1,000 married/civil partnership women		Births (outside marriage/civil partnership) per 1,000 single, widowed, divorced or separated women	
	Ireland*	England and Wales	Ireland*	England and Wales	Ireland*	England and Wales
15 - 19 years	12.3	21.2	317.8	243.0	11.3	20.4
20 - 24 "	48.8	71.6	221.7	294.9	41.1	58.1
25 - 29 "	88.9	104.3	214.0	230.8	53.8	63.9
30 - 34 "	134.8	111.9	220.9	174.6	57.1	61.8
35 - 39 "	97.8	62.1	131.8	77.4	43.1	43.0
40 - 44 "	22.4	13.3	26.5	13.9	14.2	12.4
45 - 49 "	1.1	0.9	1.3	0.9	0.6	0.9
<b>Total 15 - 49 years</b>	<b>63.2</b>	<b>64.0</b>	<b>104.7</b>	<b>103.9</b>	<b>35.7</b>	<b>44.8</b>

\* Rates are based on the 2011 usual residence population estimates.

<sup>1</sup> Since the number of births within marriage/civil partnership in the under 20 age-group is small, caution should be exercised in the interpretation of trends in this rate.

**Table 2.20 Number of multiple births and the number of twins per 1,000 maternities, 1986-2011**

Year	Live births	Maternities which resulted in live issue	Multiple confinements				Twinning rate
			Twins	Triplets	Quadruplets	Quintuplets	
1986	61,620	60,993	642	8	-	-	10.5
1987	58,433	57,818	625	12	-	-	10.8
1988	54,600	53,981	639	5	-	-	11.8
1989	52,018	51,398	626	7	-	-	12.2
1990	53,044	52,425	649	8	-	1	12.4
1991	52,718	52,142	610	6	2	-	11.7
1992	51,089	50,505	602	8	3	-	11.9
1993	49,304	48,748	574	13	-	-	11.8
1994	48,255	47,670	602	14	1	-	12.6
1995	48,787	48,138	674	16	-	-	14.0
1996	50,655	49,996	675	22	-	-	13.5
1997	52,775	52,071	737	26	1	-	14.2
1998	53,969	53,262	742	22	1	-	13.9
1999	53,924	53,191	728	29	-	-	13.7
2000	54,789	54,084	726	16	1	-	13.4
2001	57,854	56,962	891	24	2	1	15.6
2002	60,503	59,620	890	18	3	-	14.9
2003	61,529	60,645	896	26	-	-	14.8
2004	61,972	61,007	979	16	1	-	16.0
2005	61,372	60,456	937	13	1	-	15.5
2006	65,425	64,427	990	17	1	-	15.4
2007	71,389	70,287	1,105	26	1	-	15.7
2008	75,173	73,807	1,319	32	1	-	17.9
2009	75,554	74,335	1,206	14	1	-	16.2
2010	75,174	73,906	1,243	23	-	-	16.8
2011	74,033	72,669	1,307	27	1	-	18.0



**Table 2.21 Births by area of residence of mother during 2011 showing births outside marriage/civil partnership separately**

Area of residence	Total (including outside marriage/civil partnership)			Rate per 1,000 population	Outside marriage/civil partnership			Percentage births outside marriage/civil partnership
	Males	Females	Total		Males	Females	Total	
<b>STATE</b>	<b>37,898</b>	<b>36,135</b>	<b>74,033</b>	<b>16.2</b>	<b>12,841</b>	<b>12,250</b>	<b>25,091</b>	<b>33.9</b>
<b>LEINSTER</b>	<b>21,856</b>	<b>20,522</b>	<b>42,378</b>	<b>17.0</b>	<b>7,869</b>	<b>7,421</b>	<b>15,290</b>	<b>36.1</b>
Carlow	513	479	992	18.1	185	168	353	35.6
Dublin City	4,124	3,956	8,080	15.7	1,788	1,701	3,489	43.2
South Dublin	2,627	2,420	5,047	18.9	1,070	1,048	2,118	42.0
Fingal	2,822	2,740	5,562	20.2	902	918	1,820	32.7
Dun Laoghaire Rathdown	1,497	1,345	2,842	13.8	405	332	737	25.9
Kildare	1,981	1,870	3,851	18.3	597	580	1,177	30.6
Kilkenny	766	659	1,425	14.9	241	188	429	30.1
Laois	714	632	1,346	16.6	262	229	491	36.5
Longford	349	286	635	16.1	109	100	209	32.9
Louth	972	914	1,886	15.3	417	388	805	42.7
Meath	1,789	1,738	3,527	19.0	512	489	1,001	28.4
Offaly	626	618	1,244	16.2	220	222	442	35.5
Westmeath	711	678	1,389	16.1	242	223	465	33.5
Wexford	1,234	1,062	2,296	15.7	514	442	956	41.6
Wicklow	1,131	1,125	2,256	16.5	405	393	798	35.4
<b>MUNSTER</b>	<b>9,783</b>	<b>9,518</b>	<b>19,301</b>	<b>15.5</b>	<b>3,172</b>	<b>3,036</b>	<b>6,208</b>	<b>32.2</b>
Clare	872	855	1,727	14.8	257	248	505	29.2
Cork City	794	781	1,575	13.5	367	361	728	46.2
Cork County	3,403	3,310	6,713	16.7	874	869	1,743	26.0
Kerry	980	1,021	2,001	14.0	325	317	642	32.1
Limerick City	393	370	763	13.6	188	184	372	48.8
Limerick County	1,173	1,123	2,296	17.2	357	323	680	29.6
North Tipperary	624	569	1,193	16.8	180	182	362	30.3
South Tipperary	623	607	1,230	13.8	248	220	468	38.0
Waterford City	430	400	830	17.9	201	168	369	44.5
Waterford County	491	482	973	14.4	175	164	339	34.8
<b>CONNACHT</b>	<b>4,081</b>	<b>3,951</b>	<b>8,032</b>	<b>14.9</b>	<b>1,117</b>	<b>1,103</b>	<b>2,220</b>	<b>27.6</b>
Galway City	574	541	1,115	15.6	161	171	332	29.8
Galway County	1,440	1,416	2,856	16.3	368	351	719	25.2
Leitrim	219	242	461	14.4	56	66	122	26.5
Mayo	911	896	1,807	13.9	249	243	492	27.2
Roscommon	444	422	866	13.5	117	120	237	27.4
Sligo	493	434	927	14.3	166	152	318	34.3
<b>ULSTER (PART OF)</b>	<b>2,178</b>	<b>2,144</b>	<b>4,322</b>	<b>14.6</b>	<b>683</b>	<b>690</b>	<b>1,373</b>	<b>31.8</b>
Cavan	640	627	1,267	17.3	180	193	373	29.4
Donegal	1,094	1,078	2,172	13.5	363	364	727	33.5
Monaghan	444	439	883	14.5	140	133	273	30.9
<b>REGIONAL AUTHORITIES:</b>								
Border	3,862	3,734	7,596	14.7	1,322	1,296	2,618	34.5
Midland	2,400	2,214	4,614	16.3	833	774	1,607	34.8
West	3,369	3,275	6,644	15.1	895	885	1,780	26.8
Dublin	11,070	10,461	21,531	17.1	4,165	3,999	8,164	37.9
Mid-East	4,901	4,733	9,634	18.0	1,514	1,462	2,976	30.9
Mid-West	3,062	2,917	5,979	15.8	982	937	1,919	32.1
South-East	4,057	3,689	7,746	15.5	1,564	1,350	2,914	37.6
South-West	5,177	5,112	10,289	15.5	1,566	1,547	3,113	30.3

**Table 2.22 Average age at maternity by area of residence of mother during 2011 showing births inside and outside marriage/civil partnership separately**

Area of residence	Total (including outside marriage/civil partnership)		Within marriage/civil partnership		Outside marriage/civil partnership	
	Total births	First births	Total births	First births	Total births	First births
<b>STATE</b>	<b>31.8</b>	<b>29.8</b>	<b>33.4</b>	<b>32.0</b>	<b>28.6</b>	<b>27.0</b>
<b>LEINSTER</b>	<b>31.6</b>	<b>29.7</b>	<b>33.3</b>	<b>31.9</b>	<b>28.6</b>	<b>27.0</b>
Carlow	30.9	28.3	32.8	31.2	27.3	25.3
Dublin City	31.2	29.6	33.2	31.9	28.7	27.3
South Dublin	30.9	28.9	32.8	31.3	28.3	26.5
Fingal	31.9	30.3	33.4	32.1	29.0	27.6
Dun Laoghaire Rathdown	33.5	31.8	34.6	33.0	30.3	29.3
Kildare	32.1	30.2	33.6	32.0	28.9	27.4
Kilkenny	32.1	29.8	33.8	31.9	28.2	26.7
Laois	31.1	29.0	32.8	31.6	28.0	26.1
Longford	31.5	29.2	33.2	31.5	28.1	26.7
Louth	30.7	28.5	33.0	31.3	27.7	26.3
Meath	32.2	30.1	33.4	31.8	29.0	27.3
Offaly	30.9	28.6	32.8	31.4	27.5	25.3
Westmeath	31.2	29.0	32.8	31.2	28.0	26.1
Wexford	30.9	28.5	32.9	31.1	28.0	26.3
Wicklow	32.0	29.9	33.7	32.2	28.9	27.3
<b>MUNSTER</b>	<b>32.0</b>	<b>30.0</b>	<b>33.6</b>	<b>32.1</b>	<b>28.6</b>	<b>27.0</b>
Clare	32.4	30.5	33.8	32.2	29.0	27.9
Cork City	30.3	28.8	32.5	31.3	27.7	26.4
Cork County	32.6	30.8	33.8	32.5	29.1	27.8
Kerry	32.0	30.0	33.5	32.1	29.0	26.9
Limerick City	29.8	27.4	32.2	30.8	27.2	24.8
Limerick County	32.0	30.0	33.5	32.0	28.3	26.7
North Tipperary	32.2	30.0	33.9	32.3	28.3	26.2
South Tipperary	31.4	29.2	33.5	32.1	28.1	26.6
Waterford City	30.8	28.9	32.7	31.5	28.4	26.9
Waterford County	32.3	29.8	34.0	32.3	29.1	27.1
<b>CONNACHT</b>	<b>32.3</b>	<b>30.4</b>	<b>33.5</b>	<b>32.2</b>	<b>29.0</b>	<b>27.5</b>
Galway City	31.9	30.7	32.8	31.6	29.8	29.2
Galway County	32.7	30.6	33.9	32.5	29.2	27.5
Leitrim	32.2	30.1	33.5	32.7	28.4	25.7
Mayo	32.1	30.3	33.4	32.2	28.5	27.3
Roscommon	32.1	29.8	33.5	31.4	28.6	27.0
Sligo	32.1	30.3	33.7	32.7	29.1	27.2
<b>ULSTER (PART OF)</b>	<b>31.4</b>	<b>29.0</b>	<b>33.1</b>	<b>31.5</b>	<b>27.9</b>	<b>25.9</b>
Cavan	31.6	29.2	33.1	31.4	28.2	25.7
Donegal	31.3	29.0	33.1	31.9	27.6	25.8
Monaghan	31.6	28.7	33.2	30.9	28.2	26.3
<b>REGIONAL AUTHORITIES:</b>						
Border	31.4	29.1	33.2	31.7	28.0	26.1
Midland	31.1	28.9	32.9	31.4	27.9	25.9
West	32.3	30.5	33.5	32.1	29.1	27.7
Dublin	31.6	29.9	33.4	32.0	28.8	27.4
Mid-East	32.1	30.1	33.5	32.0	28.9	27.3
Mid-West	31.9	29.7	33.6	32.0	28.3	26.6
South-East	31.4	29.0	33.3	31.6	28.1	26.4
South-West	32.1	30.3	33.6	32.3	28.7	27.3

**Table 2.23 Births inside and outside marriage/civil partnership and rates per 1,000 population, 1864-2011**

Period	Inside marriage/civil partnership		Outside marriage/civil partnership				% of all births
	Total	Rate	Total	Rate	Male	Female	
1864-1870	104,342	25.17	2,584	0.62	1,304	1,280	2.42
1871-1880	102,674	25.88	1,705	0.43	878	827	1.63
1881-1890	82,187	22.45	1,575	0.43	816	759	1.89
1891-1900	72,527	21.76	1,468	0.44	753	715	1.99
1901-1910	69,912	22.08	1,468	0.46	754	714	2.06
1911-1920	64,912	20.99	1,595	0.51	815	780	2.41
1921-1930	58,700	19.64	1,706	0.57	880	826	2.83
1931-1940	55,212	18.70	1,893	0.64	970	923	3.31
1941-1950	62,728	21.13	2,282	0.77	1,173	1,109	3.51
1951-1960	60,444	20.82	1,220	0.42	633	587	1.97
1961-1970	61,035	21.19	1,382	0.48	700	682	2.21
1971-1980	66,806	20.93	2,633	0.82	1,356	1,277	3.77
1981-1990	55,985	15.94	5,643	1.61	2,894	2,749	9.16
1991-2000	39,091	10.75	12,535	3.45	6,454	6,081	24.28
2001-2010	44,964	10.68	21,631	5.14	11,113	10,517	28.77
1996	37,858	10.44	12,797	3.53	6,671	6,126	25.26
1997	38,626	10.55	14,149	3.87	7,090	7,059	26.81
1998	38,477	10.39	15,492	4.18	7,940	7,552	28.71
1999	37,134	9.92	16,790	4.48	8,752	8,038	31.14
2000	37,523	9.91	17,266	4.56	8,945	8,321	31.51
2001	39,740	10.35	18,114	4.72	9,295	8,819	31.31
2002	41,624	10.63	18,879	4.82	9,639	9,240	31.20
2003	42,319	10.64	19,210	4.83	9,902	9,308	31.22
2004	42,174	10.43	19,798	4.90	10,212	9,586	31.95
2005	41,871	10.13	19,501	4.71	9,968	9,533	31.78
2006	44,028	10.38	21,397	5.05	11,072	10,325	32.70
2007	47,749	10.91	23,640	5.40	12,084	11,556	33.11
2008	50,028	11.15	25,145	5.61	12,905	12,240	33.45
2009	50,302	11.10	25,252	5.57	13,023	12,229	33.42
2010	49,802	10.93	25,372	5.57	13,028	12,334	33.75
2011	48,942	10.70	25,091	5.48	12,841	12,250	33.89

**Table 2.24a Total births in 2011 classified by nationality of mother, marital status and age**

Nationality of mother	Total births	% of total births	Births inside marriage/civil partnership	Births outside marriage/civil partnership	% of births inside marriage/civil partnership	% of births outside marriage/civil partnership	Average age of mother at maternity
<b>TOTAL</b>	<b>74,033</b>	<b>100.0</b>	<b>48,942</b>	<b>25,091</b>	<b>66.1</b>	<b>33.9</b>	<b>31.8</b>
Ireland	57,261	77.3	37,651	19,610	65.8	34.2	32.1
United Kingdom	1,415	1.9	765	650	54.1	45.9	31.7
EU15 excl. Irl & UK	1,057	1.4	651	406	61.6	38.4	33.3
Accession states (EU27 excl. EU15)	8,014	10.8	4,971	3,043	62.0	38.0	29.1
Other	5,816	7.9	4,633	1,183	79.7	20.3	31.4
Not stated	470	0.6	271	199	57.7	42.3	30.9

**Table 2.24b Total births in 2011 classified by nationality of parents**

Nationality of mother	Nationality of father	Number	% of all births
<b>Total</b>		<b>74,033</b>	<b>100.0</b>
Ireland	Ireland	39,496	53.3
Ireland	United Kingdom	1,105	1.5
Ireland	EU15 excl. Irl & UK	305	0.4
Ireland	Accession states (EU27 excl. EU15)	349	0.5
Ireland	Other	873	1.2
Ireland	Not stated	15,133	20.4
United Kingdom	Ireland	723	1.0
EU15 excl. Irl & UK	Ireland	414	0.6
Accession states (EU27 excl. EU15)	Ireland	430	0.6
Other	Ireland	912	1.2
Not stated	Ireland	114	0.2
United Kingdom	United Kingdom	226	0.3
EU15 excl. Irl & UK	EU15 excl. Irl & UK	209	0.3
Accession states (EU27 excl. EU15)	Accession states (EU27 excl. EU15)	4,895	6.6
Other	Other	3,425	4.6
Remainder	Remainder	5,424	7.3