



**An Phríomh-Oifig Staidrimh**  
Central Statistics Office

# Vital Statistics

## Fourth Quarter and Yearly Summary

**2009**

### **Vital Statistics Yearly Summary 2009**

Information on the number of births in this report has subsequently been revised. Overall figures are corrected in Vital Statistics Second Quarter 2011 report. Revised tables are available at

<http://www.cso.ie/px/pxeirestat/statire/SelectTable/Omrade0.asp?Planguage=0>

Published by the Stationery Office, Dublin, Ireland.

To be purchased from the:

Central Statistics Office, Information Section, Skehard Road, Cork,

Government Publications Sales Office, Sun Alliance House,  
Molesworth Street, Dublin 2,

or through any bookseller.

Compiled by the Central Statistics Office on behalf of the Department of Health and Children.

© Government of Ireland 2010

Material compiled and presented by  
Central Statistics Office.

Reproduction is authorised, except for commercial  
purposes, provided the source is acknowledged.

ISBN 978 1-4064-2368-6  
ISSN 0790-7710

# Contents

## Fourth Quarter 2009

	<b>Page</b>
<b>Commentary</b>	6
<b>Tables</b>	
Table 1.1	10
Table 1.2	11
Table 1.3	12
Table 1.4	13
Table 1.5	14
Table 1.6	15
Table 1.7	16
Table 1.8	17
Table 1.9	18
Table 1.10	19
Table 1.11	20
Table 1.12	22
Table 1.13	24
Table 1.14	26

Note: Page 9 is blank

# Contents

## Yearly Summary 2009

		<b>Page</b>
	<b>Commentary</b>	28
	<b>Tables</b>	
Table 2.1	Births registered, classified by age of mother at maternity between 2007 and 2009 and their corresponding annual age specific (asfr) and total period fertility rates (tpfr)	31
Table 2.2	Births registered, classified by area of residence of mother	32
Table 2.3	Births registered, classified by age of mother and previous number of liveborn children	33
Table 2.4	Number and percentage of births within and outside marriage, classified by age of mother	34
Table 2.5	Number and percentage of births registered within and outside marriage, classified by area of residence of mother	35
Table 2.6	Births registered, classified by area of residence and age of mother	36
Table 2.7	Births registered outside marriage, classified by area of residence and age of mother	37
Table 2.8	Births registered in 2009, classified by nationality of mother, marital status and age	37
Table 2.9	Deaths registered by county of residence of deceased	38
Table 2.10	Deaths registered by cause of death and county of residence of deceased	39
Table 2.11	Deaths registered, classified by cause and age group	40
Table 2.12	Male deaths registered, classified by cause and age group	42
Table 2.13	Female deaths registered, classified by cause and age group	44
Table 2.14	Infant and neonatal mortality by area of residence of deceased	46
Table 2.15	Divorce, Judicial Separation and Nullity applications received and granted by the courts in year ending December 2009	47
	Note: Page 48 is blank	
	<b>Appendix</b>	
	Glossary of terms	50
	Cause of death Eurostat shortlist (August 1998)	51
Table 1	Estimated population classified by sex and age group, 2004-2009	52
Table 2	Deaths which were registered on the authority of the Superintendent Registrars in 2009, classified by principal groups of causes, sex and year of occurrence	53

**Fourth Quarter 2009**

## 4th Quarter 2009

### Commentary

#### Introduction

This report has been prepared by the Central Statistics Office for the Minister for Health and Children in accordance with the provisions of Section 2 of the Vital Statistics and Births, Deaths and Marriages Registration Act, 1952 and Section 73 of the Civil Registration Act 2004.

#### Births

There were 17,358 births registered in quarter 4 of 2009, 8,957 males and 8,401 females, a decrease of 522 on the quarter 4 figure of 2008. The quarter 4 2009 total is 38.9% higher than in 2000 when 12,494 babies were registered. See tables 1.1 and 1.3.

The 17,358 births represent an annual birth rate of 15.6 per 1,000 of the population, 0.6 below quarter 4 of 2008. This rate is 2.4 per 1,000 population higher than in 2000. See table 1.2 and fig. 1.1.

#### Birth order

A total of 7,426 births (42.9%) were to first time mothers in quarter 4 of 2009. Second time mothers had 5,538 births (32.0%). This compares to 5,236 (42.1%) first births registered in quarter 4 2000. See table 1.4 and fig. 1.2.

#### Age of mothers

The average age of mothers for births registered in quarter 4 2009 was 31.4 years, 0.2 years more than the corresponding figure in quarter 4 2008, and 1.2 years more than in quarter 4 2000. The average age of mothers having their first child in quarter 4 2009 was 29.3 years. See tables 1.1, 1.7 and fig. 1.3.

#### Births outside marriage

There were 5,757 births registered as outside marriage in quarter 4 of 2009. This accounted for 33.2% of all births, an increase of 0.2% on quarter 4 2008. The highest percentage of births outside marriage occurred in Waterford City at 47%, while the lowest percentage was in Roscommon at 21%. In quarter 4 2000, 3,868 births were registered outside marriage or 31% of all births. See tables 1.1 and 1.6.

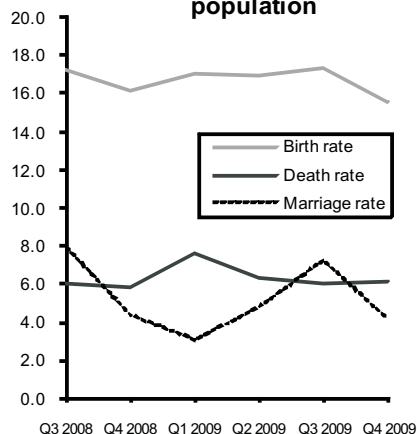
#### Deaths

There were 6,821 deaths registered in quarter 4 2009, 3,566 males and 3,255 females. This represents an annual death rate of 6.1 per 1,000 population. The quarter 4 2009 total is 6.2% higher than in 2008 when 6,424 deaths were registered. See tables 1.1, 1.9 and fig. 1.1.

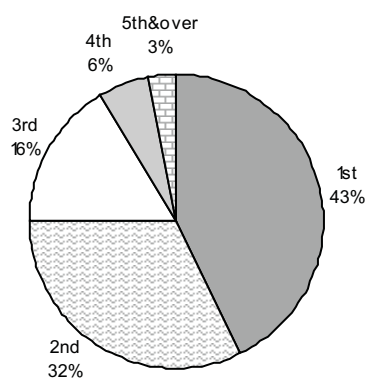
#### Age at death

There were 49 infant deaths registered in quarter 4 2009 giving an infant mortality rate of 2.8 deaths per 1,000 live births. Neonatal deaths are deaths of infants at ages under 4 weeks. There were 34 neonatal deaths registered in quarter 4 2009, a neonatal mortality rate of 2.0 deaths per 1,000 live births. See tables 1.1, 1.2 and fig. 1.4.

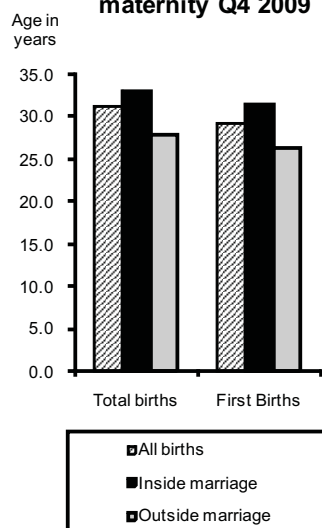
**Fig. 1.1 Annual birth, death and marriage rates per 1,000 population**



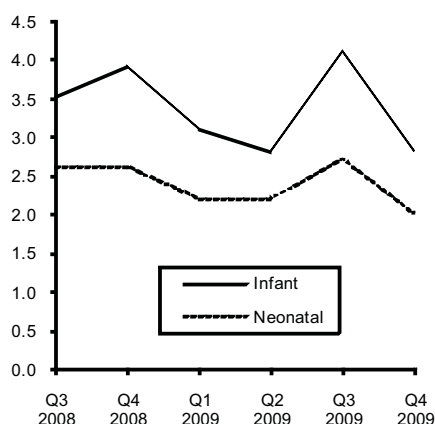
**Fig. 1.2 Birth Order Q4 2009**



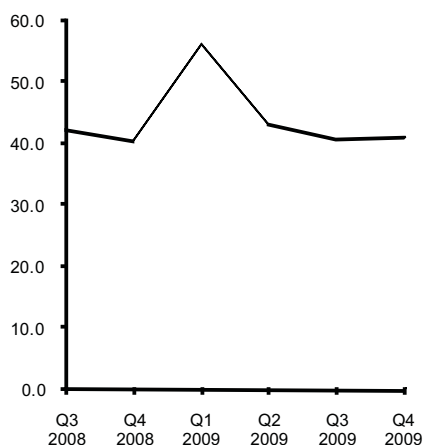
**Fig. 1.3 Average age at maternity Q4 2009**



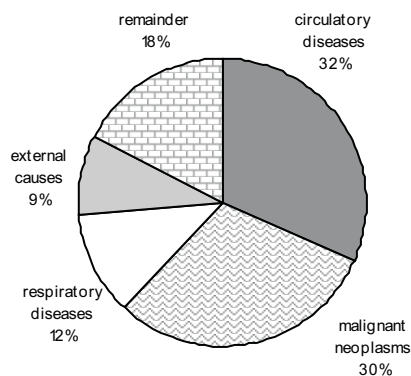
**Fig. 1.4 Infant and neonatal mortality rates per 1,000 live births**



**Fig. 1.5 Death rates for ages 65 & over per 1,000 relevant population**



**Fig. 1.6 Principal causes of death Q4 2009**



There were 5,098 deaths of persons aged 65 and over registered in quarter 4 2009. This represents an annual death rate of 41.2 per 1,000 population aged 65 and over. See tables 1.1, 1.2 and fig. 1.5.

### Cause of death

- **Diseases of the Circulatory System:**

Diseases of the Circulatory System accounted for 2,159 deaths, or an annual rate of 1.9 per 1,000 population. Of these, 1,154 were due to Ischaemic Heart Disease and 469 to Cerebrovascular Disease. See table 1.11, and fig. 1.6.

- **Malignant Neoplasms:**

There were 2,062 deaths from malignant neoplasms. This is equivalent to an annual rate of 1.8 per 1,000 population. See table 1.11, and fig. 1.6.

- **Diseases of the Respiratory System:**

Deaths from pneumonia numbered 288; chronic lower respiratory disease accounted for 329 deaths and 181 deaths resulted from other respiratory diseases. See table 1.11, and fig. 1.6.

- **Natural increase**

The natural increase in the population (births minus deaths) for quarter 4 2009 was 10,537. This represents a rate of 9.5 per 1,000 population, 0.9 below quarter 4 of 2008. See tables 1.1 and 1.2.

### Marriages

The number of marriages registered during the quarter was 4,699 equivalent to an annual marriage rate of 4.2 per 1,000 population, 0.2 below the corresponding quarter of 2008. The quarter 4 2009 total is 0.1% lower than in quarter 4 2000 when 4,705 marriages were registered. See tables 1.1, 1.2, and fig. 1.1.

### Population

The estimated population in April 2009 was 4,459,300.

### Methodology

All figures in this report are classified by quarter of registration. Delay in the registration of some births, deaths and marriages result in them being included in a later period in these quarterly reports.

### Changes and Methodology

The extension of the Limerick City boundary, which came into operation on 1st March 2008, has been taken into account in the compilation of the statistics from the Second Quarter of 2008. As a result, data for Limerick City and County are not directly comparable with any quarter prior to the Second Quarter 2008.

This publication continues with the 3 major changes in the methods by which mortality statistics are compiled. These changes were introduced in the Vital Statistics First Quarter 2007 publication.

- 1 Underlying Cause of Death is classified according to International Classification of Diseases, Version 10 (ICD10) instead of to International Classification of Diseases, Version 9 (ICD9). In addition, this and future publications will incorporate certain official updates to ICD-10. In particular, mental and behavioural disorders due to psychoactive substance use (F10-F19), with mention of intestinal infectious diseases (A00-A09), accidental, intentional self and undetermined intent poisoning by and exposure to noxious substances (X40-X49, X60-X69, Y10-Y19) or assault

by chemical or noxious substance (X85-X90), are now coded to the latter. <http://www.who.int/classifications/icd/OfficialWHOUpdatesCombined1996-2008VOLUME2.pdf>

- 2 Deaths where there was not an inquest have been coded using the automated coding system developed by the U.S National Centre for Health Statistics (NCHS). Previously the Underlying Cause of Death was chosen manually for all deaths.
- 3 All deaths registered in the Quarter have been included in the statistics, in some cases with a provisional cause of death. Previously the practice was not to include deaths in the quarterly statistics until the cause of death had been definitely established.

Because of these changes, caution should be taken in directly comparing these mortality statistics with those of previous quarters. Many countries have found that moving to ICD10 does affect certain specific categories of causes of death. In particular, a significant drop in the number of deaths attributed to pneumonia and bronchopneumonia has been observed in some countries after moving to ICD10. These deaths were instead assigned to other conditions included on the death certificate.

The effect of the third change above has been to increase the number of deaths in our statistics as compared with previous years. Statistics for deaths due to external causes are particularly affected by this change. The previous method meant that some deaths were included in a later quarter of the year from when they had been registered, because of the delay involved in establishing a definite cause of death.





**Table 1.1 Marriages, births, deaths and natural increase**

	Marriages <sup>1</sup>	Live Births				Deaths <sup>2</sup>				Natural Increase
		Total	First	Outside marriage	Average Age	Total	Infant	Neonatal	65 & over	
<b>Quarter 1</b>										
2000	2,200	13,984	5,693	4,656	30.0	9,804	86	59	8,062	4,180
2001	2,168	14,785	5,963	4,877	30.1	8,408	81	56	6,747	6,377
2002	2,484	14,972	6,127	4,877	30.3	7,749	73	51	6,281	7,223
2003	2,571	15,238	6,158	5,080	30.3	7,756	67	52	6,259	7,482
2004	2,676	15,599	6,082	5,181	30.7	7,873	72	56	6,347	7,726
2005	2,892	15,334	6,290	5,147	30.9	7,352	65	47	5,920	7,982
2006	3,267	15,958	6,449	5,481	30.9	7,320	56	36	6,040	8,638
2007	3,399	17,473	7,226	5,905	31.1	7,910	48	37	6,326	9,563
2008	3,242	19,154	8,088	6,480	31.1	7,525	63	42	6,011	11,629
2009	3,450	18,787	7,897	6,405	31.2	8,419	59	41	6,739	10,368
<b>Quarter 2</b>										
2000	4,670	13,794	5,427	4,260	30.3	7,650	77	52	5,974	6,144
2001	4,533	14,303	5,615	4,307	30.5	7,260	74	55	5,808	7,043
2002	4,810	15,247	5,858	4,672	30.5	7,680	91	64	6,074	7,567
2003	4,827	15,582	6,095	4,689	30.6	7,203	83	59	5,625	8,379
2004	4,719	15,535	5,897	4,874	30.8	6,881	74	53	5,351	8,654
2005	5,374	15,306	5,922	4,810	31.1	7,349	70	52	5,826	7,957
2006	5,094	15,979	6,315	5,056	31.1	6,967	65	44	5,488	9,012
2007	5,536	17,127	6,926	5,428	31.2	6,902	60	34	5,394	10,225
2008	5,370	19,040	7,712	6,174	31.2	7,569	90	62	5,857	11,471
2009	5,342	18,844	7,858	6,114	31.3	7,020	52	41	5,356	11,824
<b>Quarter 3</b>										
2000	7,593	13,967	5,641	4,451	30.2	6,832	89	54	5,372	7,135
2001	7,557	14,688	5,901	4,472	30.3	6,974	97	67	5,403	7,714
2002	7,580	15,593	6,333	4,855	30.4	6,941	68	50	5,391	8,652
2003	7,996	15,909	6,240	4,981	30.6	6,639	85	68	5,147	9,270
2004	8,168	15,605	6,171	5,100	30.8	6,473	72	43	5,123	9,132
2005	8,347	16,170	6,548	5,101	30.9	6,380	50	33	4,919	9,790
2006	8,341	16,920	6,891	5,541	31.0	6,657	58	46	5,146	10,263
2007	8,733	18,554	7,636	6,019	31.1	6,455	48	32	4,976	12,099
2008	8,765	18,991	7,960	6,286	31.1	6,674	67	50	5,108	12,317
2009	8,050	19,289	8,170	6,256	31.2	6,638	80	53	5,039	12,651
<b>Quarter 4</b>										
2000	4,705	12,494	5,236	3,868	30.2	6,829	70	53	5,324	5,665
2001	4,988	14,106	5,915	4,393	30.3	7,170	85	57	5,422	6,936
2002	5,682	14,709	5,989	4,411	30.5	6,978	74	49	5,378	7,731
2003	4,908	14,788	5,883	4,563	30.7	7,225	76	52	5,568	7,563
2004	5,056	14,945	5,975	4,783	30.9	6,924	82	62	5,253	8,021
2005	4,742	14,232	5,861	4,470	31.1	6,360	59	45	4,827	7,872
2006	5,139	15,380	6,456	5,217	31.0	6,535	58	42	4,946	8,845
2007	4,876	17,466	7,481	5,818	31.1	6,783	65	46	5,128	10,683
2008	4,866	17,880	7,608	5,904	31.2	6,424	70	46	4,871	11,456
2009	4,699	17,358	7,426	5,757	31.4	6,821	49	34	5,098	10,537
<b>Total</b>										
2000	19,168	54,239	21,997	17,235	30.2	31,115	322	218	24,732	23,124
2001	19,246	57,882	23,394	18,049	30.3	29,812	337	235	23,380	28,070
2002	20,556	60,521	24,307	18,815	30.4	29,348	306	214	23,124	31,173
2003	20,302	61,517	24,376	19,313	30.6	28,823	311	231	22,599	32,694
2004	20,619	61,684	24,125	19,938	30.8	28,151	300	214	22,074	33,533
2005	21,355	61,042	24,621	19,528	31.0	27,441	244	177	21,492	33,601
2006	21,841	64,237	26,111	21,295	31.0	27,479	237	168	21,620	36,758
2007	22,544	70,620	29,269	23,170	31.1	28,050	221	149	21,824	42,570
2008	22,243	75,065	31,368	24,844	31.1	28,192	290	200	21,847	46,873
2009	21,541	74,278	31,351	24,532	31.3	28,898	240	169	22,232	45,380

<sup>1</sup> 2002, 2005 and 2006 marriage figures are final. All other marriage figures are subject to revision.<sup>2</sup> See 'Commentary' for changes in methodology effective from 2007.

**Table 1.2 Annual marriage, birth, death and natural increase rates per 1,000 population**

	Marriages	Live Births			Deaths				Natural Increase
		Total	% First births <sup>1</sup>	% Outside marriage	Total	Infant Mortality <sup>2</sup>	Neonatal Mortality <sup>3</sup>	65 & over	
<b>Quarter 1</b>									
2000	2.4	14.9	40.9	33.3	10.5	6.1	4.2	76.4	4.5
2001	2.3	15.6	40.5	33.0	8.9	5.5	3.8	63.5	6.7
2002	2.6	15.6	41.2	32.6	8.1	4.9	3.4	58.5	7.5
2003	2.6	15.6	40.7	33.3	7.9	4.4	3.4	57.4	7.6
2004	2.7	15.7	40.4	33.2	7.9	4.6	3.6	57.5	7.8
2005	2.9	15.2	41.3	33.6	7.3	4.2	3.1	52.7	7.9
2006	3.2	15.4	41.1	34.3	7.1	3.5	2.3	52.6	8.4
2007	3.2	16.5	42.2	33.8	7.5	2.7	2.1	54.1	9.0
2008	3.0	17.7	42.6	33.8	6.9	3.3	2.2	51.1	10.7
2009	3.1	17.0	42.2	34.1	7.6	3.1	2.2	56.0	9.4
<b>Quarter 2</b>									
2000	4.9	14.6	39.5	30.9	8.1	5.6	3.8	56.3	6.5
2001	4.7	14.9	39.5	30.1	7.5	5.2	3.8	54.1	7.3
2002	4.9	15.6	38.8	30.6	7.8	6.0	4.2	55.7	7.7
2003	4.9	15.7	39.5	30.1	7.2	5.3	3.8	50.9	8.4
2004	4.7	15.4	38.8	31.4	6.8	4.8	3.4	47.6	8.6
2005	5.2	14.8	38.8	31.4	7.1	4.6	3.4	50.8	7.7
2006	4.8	15.1	41.1	31.6	6.6	4.1	2.8	46.9	8.5
2007	5.1	15.8	40.9	31.7	6.4	3.5	2.0	45.9	9.4
2008	4.9	17.2	40.8	32.4	6.8	4.7	3.3	48.6	10.4
2009	4.8	16.9	42.0	32.4	6.3	2.8	2.2	43.3	10.6
<b>Quarter 3</b>									
2000	8.0	14.7	40.6	31.9	7.2	6.4	3.9	50.6	7.5
2001	7.9	15.3	40.4	30.4	7.3	6.6	4.6	50.3	8.0
2002	7.7	15.9	41.0	31.1	7.1	4.4	3.2	49.5	8.8
2003	8.0	16.0	39.6	31.3	6.7	5.3	4.3	46.6	9.3
2004	8.1	15.4	39.8	32.7	6.4	4.6	2.8	45.6	9.0
2005	8.1	15.6	40.7	31.5	6.2	3.1	2.0	42.9	9.5
2006	7.9	16.0	41.6	32.7	6.3	3.4	2.7	44.0	9.7
2007	8.1	17.1	41.4	32.4	6.0	2.6	1.7	42.3	11.2
2008	7.9	17.2	42.1	33.1	6.0	3.5	2.6	42.4	11.1
2009	7.2	17.3	42.6	32.4	6.0	4.1	2.7	40.7	11.3
<b>Quarter 4</b>									
2000	5.0	13.2	42.1	31.0	7.2	5.6	4.2	50.1	6.0
2001	5.2	14.7	42.2	31.1	7.5	6.0	4.0	50.5	7.2
2002	5.8	15.0	41.2	30.0	7.1	5.0	3.3	49.3	7.9
2003	4.9	14.9	40.9	30.9	7.3	5.1	3.5	50.4	7.6
2004	5.0	14.8	40.3	32.0	6.8	5.5	4.1	46.7	7.9
2005	4.6	13.8	41.4	31.4	6.2	4.1	3.2	42.1	7.6
2006	4.8	14.5	42.3	33.9	6.2	3.8	2.7	42.3	8.3
2007	4.5	16.1	43.2	33.3	6.3	3.7	2.6	43.6	9.8
2008	4.4	16.2	42.8	33.0	5.8	3.9	2.6	40.5	10.4
2009	4.2	15.6	42.9	33.2	6.1	2.8	2.0	41.2	9.5
<b>Total</b>									
2000	5.1	14.3	40.8	31.8	8.2	5.9	4.0	58.2	6.1
2001	5.0	15.0	40.7	31.2	7.7	5.8	4.1	54.4	7.3
2002	5.2	15.5	40.5	31.1	7.5	5.1	3.5	53.0	8.0
2003	5.1	15.5	40.2	31.4	7.2	5.1	3.8	51.1	8.2
2004	5.1	15.2	39.8	32.3	7.0	4.9	3.5	49.1	8.3
2005	5.2	14.8	40.5	32.0	6.6	4.0	2.9	46.8	8.1
2006	5.2	15.2	41.5	33.2	6.5	3.7	2.6	46.2	8.7
2007	5.2	16.3	41.9	32.8	6.5	3.1	2.1	46.4	9.8
2008	5.0	17.0	42.1	33.1	6.4	3.9	2.7	45.4	10.6
2009	4.8	16.7	42.4	33.0	6.5	3.2	2.3	44.9	10.2

<sup>1</sup> First births divided by the total number of live births (excluding those with unstated parity), multiplied by 100.<sup>2</sup> Infant mortality is the number of infant deaths per 1,000 live births.<sup>3</sup> Neonatal mortality is the number of neonatal (infants aged under 4 weeks) deaths per 1,000 live births.

**Table 1.3 Births registered, classified by area of residence of mother, October - December 2009**

Area of residence	Total	Male	Female	Rate <sup>1</sup>
<b>STATE</b>	<b>17,358</b>	<b>8,957</b>	<b>8,401</b>	<b>15.6</b>
<b>LEINSTER</b>	<b>9,587</b>	<b>4,968</b>	<b>4,619</b>	<b>15.9</b>
Carlow	226	110	116	17.1
Dublin City	1,927	1,027	900	14.5
South Dublin	1,025	541	484	15.8
Fingal	1,212	652	560	19.2
Dun Laoghaire Rathdown	640	330	310	12.5
Kildare	913	448	465	18.6
Kilkenny	326	172	154	14.2
Laois	307	172	135	17.4
Longford	159	82	77	17.6
Louth	396	208	188	13.5
Meath	785	395	390	18.3
Offaly	281	144	137	15.1
Westmeath	301	149	152	14.4
Wexford	538	267	271	15.5
Wicklow	551	271	280	16.6
<b>MUNSTER</b>	<b>4,746</b>	<b>2,448</b>	<b>2,298</b>	<b>15.4</b>
Clare	435	214	221	14.9
Cork City	374	189	185	11.9
Cork County	1,614	841	773	17.0
Kerry	489	258	231	13.3
Limerick City	190	94	96	12.1
Limerick County	579	303	276	17.7
North Tipperary	295	153	142	17.0
South Tipperary	321	174	147	14.7
Waterford City	212	100	112	17.6
Waterford County	237	122	115	14.5
<b>CONNACHT</b>	<b>1,967</b>	<b>1,008</b>	<b>959</b>	<b>14.8</b>
Galway City	255	118	137	13.4
Galway County	651	328	323	15.5
Leitrim	123	58	65	16.2
Mayo	466	244	222	14.3
Roscommon	233	128	105	15.1
Sligo	239	132	107	14.9
<b>ULSTER (PART OF)</b>	<b>1,058</b>	<b>533</b>	<b>525</b>	<b>15.1</b>
Cavan	303	151	152	18.0
Donegal	543	283	260	14.0
Monaghan	212	99	113	14.4
<b>REGIONAL AUTHORITIES:</b>				
Border	1,816	931	885	14.6
Midland	1,048	547	501	15.6
West	1,605	818	787	14.9
Dublin	4,804	2,550	2,254	15.6
Mid-East	2,249	1,114	1,135	17.3
Mid-West	1,499	764	735	16.0
South-East	1,860	945	915	15.1
South-West	2,477	1,288	1,189	15.2

<sup>1</sup> Births per year per 1,000 population. Annual rates based on estimated 2009 population.

**Table 1.4 Births registered, classified by age of mother and previous number of liveborn children, October - December 2009**

Age of mother at maternity	Previous number of liveborn children							
	Total	0	1	2	3	4	5 or more	Not stated
<b>All ages</b>	<b>17,358</b>	<b>7,426</b>	<b>5,538</b>	<b>2,828</b>	<b>985</b>	<b>331</b>	<b>196</b>	<b>54</b>
<b>15 and under</b>	<b>11</b>	<b>11</b>	<b>-</b>	<b>-</b>	<b>-</b>	<b>-</b>	<b>-</b>	<b>-</b>
16	30	30	-	-	-	-	-	-
17	87	84	3	-	-	-	-	-
18	139	126	10	3	-	-	-	-
19	236	210	24	2	-	-	-	-
<b>Under 20</b>	<b>503</b>	<b>461</b>	<b>37</b>	<b>5</b>	<b>-</b>	<b>-</b>	<b>-</b>	<b>-</b>
20	243	182	53	5	2	-	-	1
21	334	248	73	11	1	-	-	1
22	425	266	122	29	6	1	-	1
23	451	287	120	35	8	-	-	1
24	492	292	131	49	11	5	1	3
<b>20-24</b>	<b>1,945</b>	<b>1,275</b>	<b>499</b>	<b>129</b>	<b>28</b>	<b>6</b>	<b>1</b>	<b>7</b>
25	560	328	160	55	14	1	1	1
26	750	413	231	78	20	7	-	1
27	859	464	251	93	38	8	1	4
28	955	493	296	107	35	16	6	2
29	1,056	516	330	137	56	8	5	4
<b>25-29</b>	<b>4,180</b>	<b>2,214</b>	<b>1,268</b>	<b>470</b>	<b>163</b>	<b>40</b>	<b>13</b>	<b>12</b>
30	1,121	549	357	133	50	17	10	5
31	1,204	523	418	182	51	23	5	2
32	1,209	502	431	188	53	21	8	6
33	1,177	429	447	192	73	21	9	6
34	1,102	346	426	215	69	26	19	1
<b>30-34</b>	<b>5,813</b>	<b>2,349</b>	<b>2,079</b>	<b>910</b>	<b>296</b>	<b>108</b>	<b>51</b>	<b>20</b>
35	1,104	292	408	274	83	31	12	4
36	993	242	359	258	95	21	14	4
37	825	188	276	243	77	21	18	2
38	669	142	205	196	76	29	20	1
39	538	87	170	149	74	26	32	-
<b>35-39</b>	<b>4,129</b>	<b>951</b>	<b>1,418</b>	<b>1,120</b>	<b>405</b>	<b>128</b>	<b>96</b>	<b>11</b>
40	328	63	110	90	37	15	11	2
41	194	42	60	45	26	11	9	1
42	117	30	34	21	16	10	6	-
43	61	15	14	19	6	3	4	-
44	41	11	12	8	5	3	2	-
<b>40-44</b>	<b>741</b>	<b>161</b>	<b>230</b>	<b>183</b>	<b>90</b>	<b>42</b>	<b>32</b>	<b>3</b>
<b>45 and over</b>	<b>40</b>	<b>14</b>	<b>4</b>	<b>9</b>	<b>2</b>	<b>7</b>	<b>3</b>	<b>1</b>
Age not stated	7	1	3	2	1	-	-	-

**Table 1.5 Number and percentage of births registered within and outside marriage, classified by age of mother, October - December 2009**

Age of mother at maternity	Total	Married parents	Unmarried Parents		% to married parents	% to unmarried parents	
			Total	Same address		Total	Same address
	Number				Percentage		
<b>All ages</b>	<b>17,358</b>	<b>11,601</b>	<b>5,757</b>	<b>3,135</b>	<b>67</b>	<b>33</b>	<b>18</b>
<b>15 and under</b>	<b>11</b>	<b>-</b>	<b>11</b>	<b>1</b>	<b>-</b>	<b>100</b>	<b>9</b>
16	30	2	28	4	7	93	13
17	87	6	81	12	7	93	14
18	139	7	132	41	5	95	29
19	236	20	216	57	8	92	24
<b>Under 20</b>	<b>503</b>	<b>35</b>	<b>468</b>	<b>115</b>	<b>7</b>	<b>93</b>	<b>23</b>
20	243	30	213	76	12	88	31
21	334	47	287	113	14	86	34
22	425	94	331	152	22	78	36
23	451	113	338	153	25	75	34
24	492	160	332	167	33	67	34
<b>20-24</b>	<b>1,945</b>	<b>444</b>	<b>1,501</b>	<b>661</b>	<b>23</b>	<b>77</b>	<b>34</b>
25	560	214	346	191	38	62	34
26	750	346	404	255	46	54	34
27	859	449	410	256	52	48	30
28	955	583	372	216	61	39	23
29	1,056	745	311	198	71	29	19
<b>25-29</b>	<b>4,180</b>	<b>2,337</b>	<b>1,843</b>	<b>1,116</b>	<b>56</b>	<b>44</b>	<b>27</b>
30	1,121	818	303	201	73	27	18
31	1,204	938	266	173	78	22	14
32	1,209	978	231	149	81	19	12
33	1,177	988	189	122	84	16	10
34	1,102	935	167	104	85	15	9
<b>30-34</b>	<b>5,813</b>	<b>4,657</b>	<b>1,156</b>	<b>749</b>	<b>80</b>	<b>20</b>	<b>13</b>
35	1,104	939	165	97	85	15	9
36	993	843	150	99	85	15	10
37	825	712	113	77	86	14	9
38	669	560	109	66	84	16	10
39	538	443	95	56	82	18	10
<b>35-39</b>	<b>4,129</b>	<b>3,497</b>	<b>632</b>	<b>395</b>	<b>85</b>	<b>15</b>	<b>10</b>
40	328	270	58	41	82	18	13
41	194	160	34	19	82	18	10
42	117	87	30	19	74	26	16
43	61	51	10	3	84	16	5
44	41	30	11	9	73	27	22
<b>40-44</b>	<b>741</b>	<b>598</b>	<b>143</b>	<b>91</b>	<b>81</b>	<b>19</b>	<b>12</b>
<b>45 and over</b>	<b>40</b>	<b>27</b>	<b>13</b>	<b>8</b>	<b>67</b>	<b>33</b>	<b>20</b>
Age not stated	7	6	1	-	86	14	-

**Table 1.6 Number and percentage of births registered within and outside marriage, classified by area of residence of mother, October - December 2009**

Area of residence	Total	Married parents	Unmarried Parents		% to married parents	% to unmarried parents	
			Total	Same address		Total	Same address
	Number				Percentage		
<b>STATE</b>	<b>17,358</b>	<b>11,601</b>	<b>5,757</b>	<b>3,135</b>	<b>67</b>	<b>33</b>	<b>18</b>
<b>LEINSTER</b>	<b>9,587</b>	<b>6,190</b>	<b>3,397</b>	<b>1,800</b>	<b>65</b>	<b>35</b>	<b>19</b>
Carlow	226	143	83	50	63	37	22
Dublin City	1,927	1,117	810	364	58	42	19
South Dublin	1,025	613	412	155	60	40	15
Fingal	1,212	841	371	223	69	31	18
Dun Laoghaire Rathdown	640	457	183	91	71	29	14
Kildare	913	623	290	178	68	32	19
Kilkenny	326	228	98	49	70	30	15
Laois	307	201	106	76	65	35	25
Longford	159	106	53	27	67	33	17
Louth	396	235	161	77	59	41	19
Meath	785	558	227	146	71	29	19
Offaly	281	187	94	70	67	33	25
Westmeath	301	214	87	54	71	29	18
Wexford	538	313	225	133	58	42	25
Wicklow	551	354	197	107	64	36	19
<b>MUNSTER</b>	<b>4,746</b>	<b>3,276</b>	<b>1,470</b>	<b>832</b>	<b>69</b>	<b>31</b>	<b>18</b>
Clare	435	310	125	73	71	29	17
Cork City	374	202	172	78	54	46	21
Cork County	1,614	1,236	378	224	77	23	14
Kerry	489	321	168	95	66	34	19
Limerick City	190	105	85	46	55	45	24
Limerick County	579	424	155	84	73	27	15
North Tipperary	295	195	100	62	66	34	21
South Tipperary	321	212	109	55	66	34	17
Waterford City	212	113	99	58	53	47	27
Waterford County	237	158	79	57	67	33	24
<b>CONNACHT</b>	<b>1,967</b>	<b>1,434</b>	<b>533</b>	<b>304</b>	<b>73</b>	<b>27</b>	<b>15</b>
Galway City	255	164	91	38	64	36	15
Galway County	651	491	160	105	75	25	16
Leitrim	123	85	38	25	69	31	20
Mayo	466	345	121	62	74	26	13
Roscommon	233	183	50	36	79	21	15
Sligo	239	166	73	38	69	31	16
<b>ULSTER (PART OF)</b>	<b>1,058</b>	<b>701</b>	<b>357</b>	<b>199</b>	<b>66</b>	<b>34</b>	<b>19</b>
Cavan	303	209	94	67	69	31	22
Donegal	543	339	204	97	62	38	18
Monaghan	212	153	59	35	72	28	17
<b>REGIONAL AUTHORITIES:</b>							
Border	1,816	1,187	629	339	65	35	19
Midland	1,048	708	340	227	68	32	22
West	1,605	1,183	422	241	74	26	15
Dublin	4,804	3,028	1,776	833	63	37	17
Mid-East	2,249	1,535	714	431	68	32	19
Mid-West	1,499	1,034	465	265	69	31	18
South-East	1,860	1,167	693	402	63	37	22
South-West	2,477	1,759	718	397	71	29	16

**Table 1.7 Births registered, classified by area of residence and age of mother  
October - December 2009**

Area of residence	Total	Under 20	20-24	25-29	30-34	35-39	40 and over	Age not stated	Average age of mother at maternity	
									Total	First
<b>STATE</b>	<b>17,358</b>	<b>503</b>	<b>1,945</b>	<b>4,180</b>	<b>5,813</b>	<b>4,129</b>	<b>781</b>	<b>7</b>	<b>31.4</b>	<b>29.3</b>
<b>LEINSTER</b>	<b>9,587</b>	<b>292</b>	<b>1,104</b>	<b>2,394</b>	<b>3,180</b>	<b>2,220</b>	<b>394</b>	<b>3</b>	<b>31.2</b>	<b>29.3</b>
Carlow	226	8	17	79	66	49	7	-	30.8	28.6
Dublin City	1,927	68	255	484	599	441	80	-	31.0	29.3
South Dublin	1,025	41	121	292	313	219	39	-	30.7	28.7
Fingal	1,212	27	124	272	447	298	44	-	31.6	29.8
Dun Laoghaire Rathdown	640	14	47	114	233	186	46	-	32.8	30.9
Kildare	913	26	96	225	311	217	37	1	31.4	29.5
Kilkenny	326	10	31	75	116	81	13	-	31.6	29.5
Laois	307	8	40	92	95	59	13	-	30.9	30.1
Longford	159	5	27	51	49	24	3	-	29.7	27.2
Louth	396	24	54	102	129	74	13	-	30.3	28.0
Meath	785	16	69	194	272	204	29	1	31.8	29.1
Offaly	281	11	41	56	94	61	18	-	31.0	28.4
Westmeath	301	8	34	79	102	66	11	1	31.1	29.1
Wexford	538	13	83	146	177	100	19	-	30.6	28.4
Wicklow	551	13	65	133	177	141	22	-	31.4	29.1
<b>MUNSTER</b>	<b>4,746</b>	<b>132</b>	<b>521</b>	<b>1,099</b>	<b>1,624</b>	<b>1,126</b>	<b>242</b>	<b>2</b>	<b>31.6</b>	<b>29.2</b>
Clare	435	22	50	90	135	113	25	-	31.6	28.8
Cork City	374	17	53	112	107	60	24	1	30.4	27.7
Cork County	1,614	28	116	328	629	445	67	1	32.3	30.0
Kerry	489	15	71	119	134	114	36	-	31.3	29.0
Limerick City	190	7	45	54	47	34	3	-	29.3	27.5
Limerick County	579	18	56	131	206	131	37	-	31.8	29.6
North Tipperary	295	10	32	70	100	63	20	-	31.4	28.7
South Tipperary	321	4	42	84	104	72	15	-	31.2	29.2
Waterford City	212	8	31	54	77	32	10	-	30.4	28.6
Waterford County	237	3	25	57	85	62	5	-	31.7	28.9
<b>CONNACHT</b>	<b>1,967</b>	<b>48</b>	<b>194</b>	<b>404</b>	<b>674</b>	<b>539</b>	<b>107</b>	<b>1</b>	<b>32.0</b>	<b>29.9</b>
Galway City	255	8	36	60	81	58	12	-	31.0	29.6
Galway County	651	11	50	115	247	185	42	1	32.7	30.8
Leitrim	123	3	12	25	44	32	7	-	32.0	29.1
Mayo	466	16	47	104	144	130	25	-	31.8	29.2
Roscommon	233	2	17	46	82	74	12	-	32.8	31.1
Sligo	239	8	32	54	76	60	9	-	31.2	28.2
<b>ULSTER (PART OF)</b>	<b>1,058</b>	<b>31</b>	<b>126</b>	<b>283</b>	<b>335</b>	<b>244</b>	<b>38</b>	<b>1</b>	<b>31.1</b>	<b>28.1</b>
Cavan	303	6	34	80	96	79	8	-	31.5	28.9
Donegal	543	22	65	152	172	109	22	1	30.6	27.6
Monaghan	212	3	27	51	67	56	8	-	31.6	28.7
<b>REGIONAL AUTHORITIES:</b>										
Border	1,816	66	224	464	584	410	67	1	31.0	28.2
Midland	1,048	32	142	278	340	210	45	1	30.8	29.1
West	1,605	37	150	325	554	447	91	1	32.2	30.2
Dublin	4,804	150	547	1,162	1,592	1,144	209	-	31.3	29.5
Mid-East	2,249	55	230	552	760	562	88	2	31.5	29.3
Mid-West	1,499	57	183	345	488	341	85	-	31.3	28.9
South-East	1,860	46	229	495	625	396	69	-	31.0	28.9
South-West	2,477	60	240	559	870	619	127	2	31.8	29.4



**Table 1.8 Births registered outside marriage, classified by area of residence and age of mother  
October - December 2009**

Area of residence	Total	Under 25	25-29	30-34	35-39	40 and over	Age not stated	Average age of mother at maternity	
								Total	First
<b>STATE</b>	<b>5,757</b>	<b>1,969</b>	<b>1,843</b>	<b>1,156</b>	<b>632</b>	<b>156</b>	<b>1</b>	<b>27.9</b>	<b>26.4</b>
<b>LEINSTER</b>	<b>3,397</b>	<b>1,126</b>	<b>1,134</b>	<b>696</b>	<b>354</b>	<b>87</b>	<b>-</b>	<b>27.9</b>	<b>26.5</b>
Carlow	83	20	38	16	8	1	-	27.7	25.7
Dublin City	810	261	263	176	89	21	-	28.1	26.8
South Dublin	412	128	145	76	48	15	-	28.1	26.4
Fingal	371	114	113	94	43	7	-	28.4	27.3
Dun Laoghaire Rathdown	183	51	52	35	37	8	-	29.4	28.0
Kildare	290	99	96	68	21	6	-	27.5	26.4
Kilkenny	98	37	36	17	8	-	-	26.8	25.5
Laois	106	36	35	20	10	5	-	28.2	27.6
Longford	53	20	24	7	2	-	-	26.3	25.2
Louth	161	69	48	27	13	4	-	26.9	24.4
Meath	227	63	97	39	21	7	-	28.1	26.4
Offaly	94	44	15	22	10	3	-	27.2	25.4
Westmeath	87	32	30	19	6	-	-	27.2	25.9
Wexford	225	79	77	42	22	5	-	27.7	26.5
Wicklow	197	73	65	38	16	5	-	27.4	26.2
<b>MUNSTER</b>	<b>1,470</b>	<b>525</b>	<b>439</b>	<b>289</b>	<b>167</b>	<b>49</b>	<b>1</b>	<b>27.9</b>	<b>26.3</b>
Clare	125	58	33	11	16	7	-	27.2	25.5
Cork City	172	65	61	29	12	4	1	27.0	25.3
Cork County	378	114	113	88	50	13	-	28.6	27.2
Kerry	168	69	42	24	26	7	-	27.9	26.4
Limerick City	85	40	23	17	4	1	-	26.5	25.3
Limerick County	155	59	47	25	17	7	-	27.9	25.6
North Tipperary	100	36	26	24	10	4	-	27.8	26.5
South Tipperary	109	30	42	24	13	-	-	28.1	26.9
Waterford City	99	31	27	27	9	5	-	28.5	26.1
Waterford County	79	23	25	20	10	1	-	28.8	26.7
<b>CONNACHT</b>	<b>533</b>	<b>185</b>	<b>157</b>	<b>102</b>	<b>76</b>	<b>13</b>	<b>-</b>	<b>28.2</b>	<b>26.6</b>
Galway City	91	32	22	19	16	2	-	28.6	27.0
Galway County	160	50	48	33	23	6	-	28.7	27.6
Leitrim	38	13	11	9	4	1	-	27.9	26.2
Mayo	121	43	38	16	20	4	-	28.1	25.5
Roscommon	50	16	19	13	2	-	-	27.7	26.4
Sligo	73	31	19	12	11	-	-	27.4	25.7
<b>ULSTER (PART OF)</b>	<b>357</b>	<b>133</b>	<b>113</b>	<b>69</b>	<b>35</b>	<b>7</b>	<b>-</b>	<b>27.4</b>	<b>25.6</b>
Cavan	94	29	31	23	10	1	-	28.2	26.7
Donegal	204	79	68	33	20	4	-	26.9	24.9
Monaghan	59	25	14	13	5	2	-	27.6	26.0
<b>REGIONAL AUTHORITIES:</b>									
Border	629	246	191	117	63	12	-	27.3	25.4
Midland	340	132	104	68	28	8	-	27.4	26.3
West	422	141	127	81	61	12	-	28.4	26.8
Dublin	1,776	554	573	381	217	51	-	28.3	27.0
Mid-East	714	235	258	145	58	18	-	27.6	26.3
Mid-West	465	193	129	77	47	19	-	27.4	25.7
South-East	693	220	245	146	70	12	-	27.9	26.3
South-West	718	248	216	141	88	24	1	28.1	26.6

**Table 1.9 Deaths registered by county of residence of deceased, October - December 2009**

Area of residence	Total	Male	Female	Rate <sup>1</sup>
<b>STATE</b>	<b>6,821</b>	<b>3,566</b>	<b>3,255</b>	<b>6.0</b>
<b>LEINSTER</b>	<b>3,369</b>	<b>1,728</b>	<b>1,641</b>	<b>5.5</b>
Carlow	79	41	38	5.9
Dublin City	963	464	499	7.3
South Dublin	185	91	94	3.7
Fingal	240	140	100	3.2
Dun Laoghaire Rathdown	323	161	162	5.7
Kildare	236	123	113	4.3
Kilkenny	133	75	58	6.0
Laois	90	42	48	5.6
Longford	69	38	31	10.1
Louth	179	93	86	6.3
Meath	205	109	96	4.3
Offaly	119	66	53	5.9
Westmeath	128	63	65	5.7
Wexford	226	118	108	6.5
Wicklow	194	104	90	5.2
<b>MUNSTER</b>	<b>2,028</b>	<b>1,074</b>	<b>954</b>	<b>6.5</b>
Clare	162	92	70	7.1
Cork City	276	140	136	7.5
Cork County	610	303	307	4.8
Kerry	248	139	109	7.8
Limerick City	83	52	31	7.2
Limerick County	207	113	94	6.8
North Tipperary	125	63	62	9.1
South Tipperary	128	63	65	6.3
Waterford City	67	42	25	5.4
Waterford County	122	67	55	6.8
<b>CONNACHT</b>	<b>935</b>	<b>515</b>	<b>420</b>	<b>6.6</b>
Galway City	44	21	23	3.0
Galway County	324	181	143	6.9
Leitrim	71	42	29	9.1
Mayo	218	126	92	7.6
Roscommon	164	89	75	7.0
Sligo	114	56	58	6.9
<b>ULSTER (PART OF)</b>	<b>489</b>	<b>249</b>	<b>240</b>	<b>6.3</b>
Cavan	130	71	59	5.5
Donegal	274	136	138	6.9
Monaghan	85	42	43	5.9
<b>REGIONAL AUTHORITIES:</b>				
Border	853	440	413	6.9
Midland	406	209	197	6.0
West	750	417	333	7.0
Dublin	1,711	856	855	5.6
Mid-East	635	336	299	4.9
Mid-West	577	320	257	6.2
South-East	755	406	349	6.1
South-West	1,134	582	552	7.0

<sup>1</sup> Deaths per year per 1,000 population. Annual rates based on estimated 2009 population.

**Table 1.10 Deaths registered by cause of death and county of residence of deceased, October - December 2009**

Area of residence	Total deaths	Malignant Neoplasms	Diseases of the Circulatory system	Diseases of the Respiratory system	External causes	All other causes
<b>STATE</b>	<b>6,821</b>	<b>2,062</b>	<b>2,159</b>	<b>798</b>	<b>603</b>	<b>1,199</b>
<b>LEINSTER</b>	<b>3,369</b>	<b>1,073</b>	<b>1,033</b>	<b>389</b>	<b>295</b>	<b>579</b>
Carlow	79	19	29	10	6	15
Dublin City	963	283	295	134	77	174
South Dublin	185	66	54	15	18	32
Fingal	240	87	61	25	23	44
Dun Laoghaire Rathdown	323	121	89	28	27	58
Kildare	236	82	78	18	14	44
Kilkenny	133	48	41	16	6	22
Laois	90	21	46	6	7	10
Longford	69	13	15	17	6	18
Louth	179	46	57	16	37	23
Meath	205	72	56	18	26	33
Offaly	119	38	31	18	9	23
Westmeath	128	41	40	17	12	18
Wexford	226	70	79	25	18	34
Wicklow	194	66	62	26	9	31
<b>MUNSTER</b>	<b>2,028</b>	<b>577</b>	<b>661</b>	<b>232</b>	<b>183</b>	<b>375</b>
Clare	162	37	54	19	18	34
Cork City	276	80	76	28	26	66
Cork County	610	178	209	59	52	112
Kerry	248	64	94	36	13	41
Limerick City	83	29	19	12	12	11
Limerick County	207	56	68	29	23	31
North Tipperary	125	33	44	15	14	19
South Tipperary	128	37	41	10	10	30
Waterford City	67	21	22	8	8	8
Waterford County	122	42	34	16	7	23
<b>CONNACHT</b>	<b>935</b>	<b>264</b>	<b>301</b>	<b>120</b>	<b>76</b>	<b>174</b>
Galway City	44	14	13	2	3	12
Galway County	324	86	110	46	28	54
Leitrim	71	22	26	11	6	6
Mayo	218	60	66	31	13	48
Roscommon	164	49	59	20	12	24
Sligo	114	33	27	10	14	30
<b>ULSTER (PART OF)</b>	<b>489</b>	<b>148</b>	<b>164</b>	<b>57</b>	<b>49</b>	<b>71</b>
Cavan	130	35	44	14	18	19
Donegal	274	92	87	31	24	40
Monaghan	85	21	33	12	7	12
<b>REGIONAL AUTHORITIES:</b>						
Border	853	249	274	94	106	130
Midland	406	113	132	58	34	69
West	750	209	248	99	56	138
Dublin	1,711	557	499	202	145	308
Mid-East	635	220	196	62	49	108
Mid-West	577	155	185	75	67	95
South-East	755	237	246	85	55	132
South-West	1,134	322	379	123	91	219

Table 1.11 Deaths registered classified by cause and age group, October - December 2009

Cause of Death	65 COD Code	ICD-10 Code	Total Deaths	Age Group										
				Under 1	1-4	5-14	15-24	25-34	35-44	45-54	55-64	65-74	75-84	85 and over
<b>Total deaths</b>	<b>0</b>	<b>A00-Y89</b>	<b>6,821</b>	<b>49</b>	<b>16</b>	<b>15</b>	<b>104</b>	<b>187</b>	<b>234</b>	<b>376</b>	<b>742</b>	<b>1,154</b>	<b>1,987</b>	<b>1,957</b>
<b>Infectious and parasitic diseases:-</b>	<b>1</b>	<b>A00-B99</b>	<b>57</b>	<b>1</b>	<b>1</b>	<b>0</b>	<b>0</b>	<b>4</b>	<b>5</b>	<b>1</b>	<b>2</b>	<b>9</b>	<b>19</b>	<b>15</b>
Tuberculosis	2	A15-A19,B90	7	0	0	0	0	0	0	0	0	1	4	2
Meningococcal infection	3	A39	2	0	0	0	0	0	0	0	0	1	1	0
AIDS (HIV Disease)	4	B20-B24	3	0	0	0	0	2	1	0	0	0	0	0
Viral Hepatitis	5	B15-B19	5	0	0	0	0	1	2	1	0	1	0	0
Other infectious and parasitic diseases			40	1	1	0	0	1	2	0	2	6	14	13
<b>Neoplasms</b>	<b>6</b>	<b>C00-D48</b>	<b>2,109</b>	<b>2</b>	<b>5</b>	<b>0</b>	<b>11</b>	<b>17</b>	<b>74</b>	<b>152</b>	<b>379</b>	<b>525</b>	<b>633</b>	<b>311</b>
<b>Malignant Neoplasms of the:-</b>	<b>7</b>	<b>C00-C97</b>	<b>2,062</b>	<b>1</b>	<b>4</b>	<b>0</b>	<b>11</b>	<b>16</b>	<b>73</b>	<b>147</b>	<b>373</b>	<b>515</b>	<b>623</b>	<b>299</b>
Lip, oral cavity, pharynx	8	C00-C14	31	0	0	0	0	0	1	2	3	11	12	2
Oesophagus	9	C15	86	0	0	0	0	0	2	5	20	22	28	9
Stomach	10	C16	78	0	0	0	0	0	4	7	9	23	27	8
Colon	11	C18	134	0	0	0	0	0	1	7	20	27	44	35
Rectum and anus	12	C19-C21	115	0	0	0	0	1	1	10	18	34	37	14
Liver and the intrahepatic bile ducts	13	C22	65	0	0	0	0	0	1	2	11	18	16	17
Pancreas	14	C25	125	0	0	0	0	0	2	15	27	32	33	16
Larynx and trachea/bronchus /lung	15	C32-C34	430	0	0	0	0	0	6	17	96	118	149	44
Skin	16	C43	34	0	0	0	0	0	7	4	4	5	7	7
Breast	17	C50	153	0	0	0	0	1	11	24	31	28	40	18
Cervix uteri	18	C53	19	0	0	0	0	2	5	1	5	5	0	1
Other parts of uterus	19	C54-C55	14	0	0	0	0	0	1	1	5	3	2	2
Ovary	20	C56	50	0	0	0	2	0	2	4	7	15	14	6
Prostate	21	C61	121	0	0	0	0	0	0	0	7	29	48	37
Kidney	22	C64	63	0	2	0	0	1	1	8	10	18	17	6
Bladder	23	C67	43	0	0	0	0	0	2	2	5	8	18	8
Lymph/haematopoietic tissue	24	C81-C96	188	0	1	0	3	6	12	8	30	52	47	29
Other malignant neoplasms			313	1	1	0	6	5	14	30	65	67	84	40
<b>Diseases of the blood and blood-forming organs, immunological disorders</b>	<b>25</b>	<b>D50-D89</b>	<b>18</b>	<b>0</b>	<b>1</b>	<b>1</b>	<b>0</b>	<b>2</b>	<b>1</b>	<b>2</b>	<b>2</b>	<b>0</b>	<b>5</b>	<b>4</b>
<b>Endocrine, Nutritional and metabolic diseases</b>	<b>26</b>	<b>E00-E90</b>	<b>147</b>	<b>1</b>	<b>0</b>	<b>0</b>	<b>2</b>	<b>2</b>	<b>6</b>	<b>4</b>	<b>7</b>	<b>38</b>	<b>35</b>	<b>52</b>
Diabetes mellitus	27	E10-E14	100	0	0	0	1	2	1	3	7	26	25	35
<b>Mental and behavioural disorders</b>	<b>28</b>	<b>F00-F99</b>	<b>137</b>	<b>0</b>	<b>0</b>	<b>0</b>	<b>0</b>	<b>2</b>	<b>0</b>	<b>0</b>	<b>3</b>	<b>5</b>	<b>36</b>	<b>91</b>
<b>Diseases of the nervous system and the sense organs</b>	<b>31</b>	<b>G00-H95</b>	<b>240</b>	<b>1</b>	<b>1</b>	<b>3</b>	<b>2</b>	<b>5</b>	<b>2</b>	<b>12</b>	<b>19</b>	<b>35</b>	<b>83</b>	<b>77</b>
Meningitis	32	G00-G03	0	0	0	0	0	0	0	0	0	0	0	0
<b>Diseases of the Circulatory System:-</b>	<b>33</b>	<b>I00-I99</b>	<b>2,159</b>	<b>0</b>	<b>0</b>	<b>1</b>	<b>4</b>	<b>10</b>	<b>30</b>	<b>78</b>	<b>157</b>	<b>327</b>	<b>706</b>	<b>846</b>
Ischaemic heart disease	34	I20-I25	1,154	0	0	0	0	1	10	47	106	194	360	436
of which: (Acute myocardial infarction)		I21	573	0	0	0	0	1	3	15	42	82	201	229
Other heart disease	35	I30-I33,I39-I52	260	0	0	1	0	4	8	9	18	31	78	111
Cerebrovascular disease	36	I60-I69	469	0	0	0	3	2	5	17	20	63	167	192
Other diseases of circulatory system			276	0	0	0	1	3	7	5	13	39	101	107

<b>Diseases of the Respiratory system</b>	<b>37</b>	<b>J00-J99</b>	<b>798</b>	<b>0</b>	<b>1</b>	<b>0</b>	<b>0</b>	<b>4</b>	<b>4</b>	<b>16</b>	<b>44</b>	<b>93</b>	<b>278</b>	<b>358</b>
Influenza	38	J10-J11	2	0	0	0	0	1	0	1	0	0	0	0
Pneumonia	39	J12-J19	288	0	1	0	0	3	3	4	12	18	86	161
Chronic Lower respiratory disease	40	J40-J47	329	0	0	0	0	0	1	4	21	47	136	120
of which: Asthma	41	J45-J46	10	0	0	0	0	0	0	0	0	2	5	3
Other diseases of the respiratory system			179	0	0	0	0	0	0	7	11	28	56	77
<b>Diseases of the Digestive system</b>	<b>42</b>	<b>K00-K93</b>	<b>250</b>	<b>0</b>	<b>0</b>	<b>0</b>	<b>0</b>	<b>4</b>	<b>8</b>	<b>28</b>	<b>42</b>	<b>39</b>	<b>67</b>	<b>62</b>
Ulcer of stomach, duodenum and jejunum	43	K25-K28	22	0	0	0	0	0	0	2	2	3	8	7
Chronic liver disease	44	K70,K73-K74	58	0	0	0	0	1	5	14	24	6	8	0
Other diseases of the digestive system			170	0	0	0	0	3	3	12	16	30	51	55
<b>Diseases of the skin and subcutaneous tissue</b>	<b>45</b>	<b>L00-L99</b>	<b>22</b>	<b>0</b>	<b>0</b>	<b>0</b>	<b>0</b>	<b>0</b>	<b>1</b>	<b>0</b>	<b>1</b>	<b>2</b>	<b>8</b>	<b>10</b>
<b>Diseases of the musculoskeletal system/connective tissue</b>	<b>46</b>	<b>M00-M99</b>	<b>52</b>	<b>0</b>	<b>0</b>	<b>0</b>	<b>0</b>	<b>0</b>	<b>0</b>	<b>3</b>	<b>1</b>	<b>8</b>	<b>19</b>	<b>21</b>
Rheumatoid arthritis and osteoarthritis	47	M05-M06,M15-M19	10	0	0	0	0	0	0	0	0	1	6	3
<b>Diseases of the genitourinary system</b>	<b>48</b>	<b>N00-N99</b>	<b>146</b>	<b>0</b>	<b>0</b>	<b>0</b>	<b>0</b>	<b>0</b>	<b>2</b>	<b>2</b>	<b>2</b>	<b>21</b>	<b>55</b>	<b>64</b>
Diseases of the kidney and ureter	49	N00-N29	105	0	0	0	0	0	2	2	2	17	41	41
<b>Complications of pregnancy, childbirth and puerperium</b>	<b>50</b>	<b>O00-O99</b>	<b>1</b>	<b>0</b>	<b>0</b>	<b>0</b>	<b>0</b>	<b>0</b>	<b>1</b>	<b>0</b>	<b>0</b>	<b>0</b>	<b>0</b>	<b>0</b>
<b>Certain conditions originating in the perinatal period<sup>1</sup></b>	<b>51</b>	<b>P00-P96</b>	<b>23</b>	<b>22</b>	<b>0</b>	<b>1</b>	<b>0</b>	<b>0</b>	<b>0</b>	<b>0</b>	<b>0</b>	<b>0</b>	<b>0</b>	<b>0</b>
<b>Congenital malformations and chromosomal abnormalities</b>	<b>52</b>	<b>Q00-Q99</b>	<b>38</b>	<b>18</b>	<b>4</b>	<b>0</b>	<b>3</b>	<b>0</b>	<b>3</b>	<b>3</b>	<b>4</b>	<b>2</b>	<b>0</b>	<b>1</b>
Congenital malformations of the:-														
Nervous system	53	Q00-Q07	8	3	3	0	1	0	0	0	0	1	0	0
Circulatory system	54	Q20-Q28	10	6	0	0	0	0	3	0	0	0	0	1
<b>Symptoms, signs, abnormal findings, ill-defined causes</b>	<b>55</b>	<b>R00-R99</b>	<b>23</b>	<b>4</b>	<b>0</b>	<b>0</b>	<b>0</b>	<b>2</b>	<b>1</b>	<b>2</b>	<b>3</b>	<b>1</b>	<b>1</b>	<b>9</b>
Sudden infant death syndrome	56	R95	4	4	0	0	0	0	0	0	0	0	0	0
Unknown and unspecified causes	57	R96-R99	11	0	0	0	0	2	1	2	2	1	0	3
<b>External causes of injury and poisoning</b>	<b>58</b>	<b>V01-Y89</b>	<b>603</b>	<b>0</b>	<b>5</b>	<b>9</b>	<b>82</b>	<b>135</b>	<b>96</b>	<b>73</b>	<b>76</b>	<b>49</b>	<b>42</b>	<b>36</b>
Accidents	59	V01-X59	332	0	4	7	42	66	45	38	41	23	32	34
of which: Transport accidents	60	V01-V99	80	0	2	4	21	15	13	7	8	3	5	2
Accidental falls	61	W00-W19	73	0	0	0	1	5	5	9	13	7	17	16
Accidental poisoning	62	X40-X49	98	0	0	0	9	35	17	18	11	4	3	1
other accidents			81	0	2	3	11	11	10	4	9	9	7	15
Suicide and intentional self harm	63	X60-X84	172	0	0	0	27	47	40	23	20	13	2	0
Homicide/assault	64	X85-Y09	5	0	0	0	4	1	0	0	0	0	0	0
Events of undetermined intent	65	Y10-Y34	79	0	1	2	9	20	11	11	13	9	2	1
All other external causes			15	0	0	0	0	1	0	1	2	4	6	1

<sup>1</sup> Stillbirths not included.

Table 1.12 Male deaths registered classified by cause and age group, October - December 2009

Cause of Death	65 COD Code	ICD-10 Code	Total Males	Age Group										
				Under 1	1-4	5-14	15-24	25-34	35-44	45-54	55-64	65-74	75-84	85 and over
<b>Total Male Deaths</b>	<b>0</b>	<b>A00-Y89</b>	<b>3,566</b>	<b>33</b>	<b>7</b>	<b>10</b>	<b>83</b>	<b>132</b>	<b>153</b>	<b>234</b>	<b>441</b>	<b>714</b>	<b>1,049</b>	<b>710</b>
<b>Infectious and parasitic diseases:-</b>	<b>1</b>	<b>A00-B99</b>	<b>29</b>	<b>1</b>	<b>0</b>	<b>0</b>	<b>0</b>	<b>3</b>	<b>4</b>	<b>1</b>	<b>1</b>	<b>8</b>	<b>9</b>	<b>2</b>
Tuberculosis	2	A15-A19,B90	4	0	0	0	0	0	0	0	0	1	2	1
Meningococcal infection	3	A39	1	0	0	0	0	0	0	0	0	1	0	0
AIDS (HIV Disease)	4	B20-B24	3	0	0	0	0	2	1	0	0	0	0	0
Viral Hepatitis	5	B15-B19	5	0	0	0	0	1	2	1	0	1	0	0
Other infectious and parasitic diseases			16	1	0	0	0	0	1	0	1	5	7	1
<b>Neoplasms</b>	<b>6</b>	<b>C00-D48</b>	<b>1,155</b>	<b>2</b>	<b>3</b>	<b>0</b>	<b>4</b>	<b>9</b>	<b>28</b>	<b>83</b>	<b>204</b>	<b>312</b>	<b>352</b>	<b>158</b>
<b>Malignant Neoplasms of the:-</b>	<b>7</b>	<b>C00-C97</b>	<b>1,133</b>	<b>1</b>	<b>2</b>	<b>0</b>	<b>4</b>	<b>8</b>	<b>28</b>	<b>81</b>	<b>200</b>	<b>307</b>	<b>349</b>	<b>153</b>
Lip, oral cavity, pharynx	8	C00-C14	20	0	0	0	0	0	1	0	2	11	5	1
Oesophagus	9	C15	59	0	0	0	0	0	2	4	16	14	19	4
Stomach	10	C16	47	0	0	0	0	0	1	6	4	18	13	5
Colon	11	C18	68	0	0	0	0	0	1	6	10	16	21	14
Rectum and anus	12	C19-C21	72	0	0	0	0	1	0	4	14	23	24	6
Liver and the intrahepatic bile ducts	13	C22	37	0	0	0	0	0	1	2	8	9	11	6
Pancreas	14	C25	66	0	0	0	0	0	1	11	13	19	14	8
Larynx and trachea/bronchus /lung	15	C32-C34	260	0	0	0	0	0	1	14	56	71	91	27
Skin	16	C43	22	0	0	0	0	0	5	4	1	4	6	2
Breast	17	C50	1	0	0	0	0	0	0	0	1	0	0	0
Cervix uteri	18	C53	0	0	0	0	0	0	0	0	0	0	0	0
Other parts of uterus	19	C54-C55	0	0	0	0	0	0	0	0	0	0	0	0
Ovary	20	C56	0	0	0	0	0	0	0	0	0	0	0	0
Prostate	21	C61	121	0	0	0	0	0	0	0	7	29	48	37
Kidney	22	C64	41	0	1	0	0	1	1	6	6	13	12	1
Bladder	23	C67	33	0	0	0	0	0	1	0	5	6	16	5
Lymph/haematopoietic tissue	24	C81-C96	109	0	0	0	2	3	7	4	17	32	28	16
Other malignant neoplasms			177	1	1	0	2	3	6	20	40	42	41	21
<b>Diseases of the blood and blood-forming organs, immunological disorders</b>	<b>25</b>	<b>D50-D89</b>	<b>6</b>	<b>0</b>	<b>0</b>	<b>1</b>	<b>0</b>	<b>1</b>	<b>0</b>	<b>1</b>	<b>0</b>	<b>0</b>	<b>2</b>	<b>1</b>
<b>Endocrine, Nutritional and metabolic diseases</b>	<b>26</b>	<b>E00-E90</b>	<b>84</b>	<b>0</b>	<b>0</b>	<b>0</b>	<b>1</b>	<b>2</b>	<b>5</b>	<b>2</b>	<b>4</b>	<b>21</b>	<b>20</b>	<b>29</b>
Diabetes mellitus	27	E10-E14	62	0	0	0	0	2	0	2	4	18	15	21
<b>Mental and behavioural disorders</b>	<b>28</b>	<b>F00-F99</b>	<b>37</b>	<b>0</b>	<b>0</b>	<b>0</b>	<b>0</b>	<b>0</b>	<b>0</b>	<b>0</b>	<b>1</b>	<b>4</b>	<b>15</b>	<b>17</b>
<b>Diseases of the nervous system and the sense organs</b>	<b>31</b>	<b>G00-H95</b>	<b>94</b>	<b>1</b>	<b>0</b>	<b>1</b>	<b>0</b>	<b>2</b>	<b>0</b>	<b>7</b>	<b>10</b>	<b>20</b>	<b>33</b>	<b>20</b>
Meningitis	32	G00-G03	0	0	0	0	0	0	0	0	0	0	0	0
<b>Diseases of the Circulatory System:-</b>	<b>33</b>	<b>I00-I99</b>	<b>1,048</b>	<b>0</b>	<b>0</b>	<b>1</b>	<b>2</b>	<b>5</b>	<b>24</b>	<b>57</b>	<b>106</b>	<b>219</b>	<b>363</b>	<b>271</b>
Ischaemic heart disease	34	I20-I25	635	0	0	0	0	1	9	38	73	147	208	159
of which: (Acute myocardial infarction)		I21	301	0	0	0	0	1	2	11	26	62	112	87
Other heart disease	35	I30-I33,I39-I52	119	0	0	1	0	2	7	8	15	17	37	32
Cerebrovascular disease	36	I60-I69	180	0	0	0	1	1	3	8	13	31	74	49
Other diseases of circulatory system			114	0	0	0	1	1	5	3	5	24	44	31

<b>Diseases of the Respiratory system</b>	<b>37</b>	<b>J00-J99</b>	<b>401</b>	<b>0</b>	<b>1</b>	<b>0</b>	<b>0</b>	<b>4</b>	<b>2</b>	<b>8</b>	<b>27</b>	<b>56</b>	<b>161</b>	<b>142</b>
Influenza	38	J10-J11	2	0	0	0	0	1	0	1	0	0	0	0
Pneumonia	39	J12-J19	120	0	1	0	0	3	2	2	10	11	38	53
Chronic Lower respiratory disease	40	J40-J47	172	0	0	0	0	0	0	2	9	26	83	52
of which: <i>Asthma</i>	41	J45-J46	4	0	0	0	0	0	0	0	0	0	4	0
Other diseases of the respiratory system			107	0	0	0	0	0	0	3	8	19	40	37
<b>Diseases of the Digestive system</b>	<b>42</b>	<b>K00-K93</b>	<b>129</b>	<b>0</b>	<b>0</b>	<b>0</b>	<b>0</b>	<b>1</b>	<b>6</b>	<b>18</b>	<b>27</b>	<b>24</b>	<b>32</b>	<b>21</b>
Ulcer of stomach, duodenum and jejunum	43	K25-K28	9	0	0	0	0	0	0	1	2	1	4	1
Chronic liver disease	44	K70,K73-K74	36	0	0	0	0	0	3	8	19	2	4	0
Other diseases of the digestive system			84	0	0	0	0	1	3	9	6	21	24	20
<b>Diseases of the skin and subcutaneous tissue</b>	<b>45</b>	<b>L00-L99</b>	<b>6</b>	<b>0</b>	<b>0</b>	<b>0</b>	<b>0</b>	<b>0</b>	<b>1</b>	<b>0</b>	<b>1</b>	<b>0</b>	<b>2</b>	<b>2</b>
<b>Diseases of the musculoskeletal system/connective tissue</b>	<b>46</b>	<b>M00-M99</b>	<b>18</b>	<b>0</b>	<b>0</b>	<b>0</b>	<b>0</b>	<b>0</b>	<b>0</b>	<b>2</b>	<b>1</b>	<b>3</b>	<b>6</b>	<b>6</b>
Rheumatoid arthritis and osteoarthritis	47	M05-M06,M15-M19	2	0	0	0	0	0	0	0	0	0	1	1
<b>Diseases of the genitourinary system</b>	<b>48</b>	<b>N00-N99</b>	<b>64</b>	<b>0</b>	<b>0</b>	<b>0</b>	<b>0</b>	<b>0</b>	<b>0</b>	<b>0</b>	<b>0</b>	<b>11</b>	<b>28</b>	<b>25</b>
Diseases of the kidney and ureter	49	N00-N29	42	0	0	0	0	0	0	0	0	7	20	15
<b>Complications of pregnancy, childbirth and puerperium</b>	<b>50</b>	<b>O00-O99</b>	<b>0</b>	<b>0</b>	<b>0</b>	<b>0</b>	<b>0</b>	<b>0</b>	<b>0</b>	<b>0</b>	<b>0</b>	<b>0</b>	<b>0</b>	<b>0</b>
<b>Certain conditions originating in the perinatal period<sup>1</sup></b>	<b>51</b>	<b>P00-P96</b>	<b>15</b>	<b>14</b>	<b>0</b>	<b>1</b>	<b>0</b>	<b>0</b>	<b>0</b>	<b>0</b>	<b>0</b>	<b>0</b>	<b>0</b>	<b>0</b>
<b>Congenital malformations and chromosomal abnormalities</b>	<b>52</b>	<b>Q00-Q99</b>	<b>19</b>	<b>11</b>	<b>0</b>	<b>0</b>	<b>3</b>	<b>0</b>	<b>0</b>	<b>1</b>	<b>3</b>	<b>1</b>	<b>0</b>	<b>0</b>
Congenital malformations of the:-														
Nervous system	53	Q00-Q07	3	1	0	0	1	0	0	0	0	1	0	0
Circulatory system	54	Q20-Q28	3	3	0	0	0	0	0	0	0	0	0	0
<b>Symptoms, signs.,abnormal findings, ill-defined causes</b>	<b>55</b>	<b>R00-R99</b>	<b>15</b>	<b>4</b>	<b>0</b>	<b>0</b>	<b>0</b>	<b>1</b>	<b>1</b>	<b>2</b>	<b>2</b>	<b>0</b>	<b>0</b>	<b>5</b>
Sudden infant death syndrome	56	R95	4	4	0	0	0	0	0	0	0	0	0	0
Unknown and unspecified causes	57	R96-R99	6	0	0	0	0	1	1	2	1	0	0	1
<b>External causes of injury and poisoning</b>	<b>58</b>	<b>V01-Y89</b>	<b>446</b>	<b>0</b>	<b>3</b>	<b>6</b>	<b>73</b>	<b>104</b>	<b>82</b>	<b>52</b>	<b>54</b>	<b>35</b>	<b>26</b>	<b>11</b>
Accidents	59	V01-X59	231	0	2	5	37	51	38	24	28	18	18	10
of which: <i>Transport accidents</i>	60	V01-V99	65	0	2	2	18	13	11	6	6	3	4	0
<i>Accidental falls</i>	61	W00-W19	43	0	0	0	1	3	5	7	8	5	8	6
<i>Accidental poisoning</i>	62	X40-X49	68	0	0	0	8	28	14	7	7	3	1	0
<i>other accidents</i>			55	0	0	3	10	7	8	4	7	7	5	4
Suicide and intentional self harm	63	X60-X84	141	0	0	0	24	36	35	19	15	10	2	0
Homicide/assault	64	X85-Y09	5	0	0	0	4	1	0	0	0	0	0	0
Events of undetermined intent	65	Y10-Y34	60	0	1	1	8	15	9	9	10	5	2	0
All other external causes			9	0	0	0	0	1	0	0	1	2	4	1

<sup>1</sup> Stillbirths not included.

Table 1.13 Female deaths registered classified by cause and age group, October - December 2009

Cause of Death	65 COD Code	ICD-10 Code	Total Females	Age Group										
				Under 1	1-4	5-14	15-24	25-34	35-44	45-54	55-64	65-74	75-84	85 and over
<b>Total Female Deaths</b>	<b>0</b>	<b>A00-Y89</b>	<b>3,255</b>	<b>16</b>	<b>9</b>	<b>5</b>	<b>21</b>	<b>55</b>	<b>81</b>	<b>142</b>	<b>301</b>	<b>440</b>	<b>938</b>	<b>1,247</b>
<b>Infectious and parasitic diseases:-</b>	<b>1</b>	<b>A00-B99</b>	<b>28</b>	<b>0</b>	<b>1</b>	<b>0</b>	<b>0</b>	<b>1</b>	<b>1</b>	<b>0</b>	<b>1</b>	<b>1</b>	<b>10</b>	<b>13</b>
Tuberculosis	2	A15-A19,B90	3	0	0	0	0	0	0	0	0	0	2	1
Meningococcal infection	3	A39	1	0	0	0	0	0	0	0	0	0	1	0
AIDS (HIV Disease)	4	B20-B24	0	0	0	0	0	0	0	0	0	0	0	0
Viral Hepatitis	5	B15-B19	0	0	0	0	0	0	0	0	0	0	0	0
Other infectious and parasitic diseases			24	0	1	0	0	1	1	0	1	1	7	12
<b>Neoplasms</b>	<b>6</b>	<b>C00-D48</b>	<b>954</b>	<b>0</b>	<b>2</b>	<b>0</b>	<b>7</b>	<b>8</b>	<b>46</b>	<b>69</b>	<b>175</b>	<b>213</b>	<b>281</b>	<b>153</b>
<b>Malignant Neoplasms of the:-</b>	<b>7</b>	<b>C00-C97</b>	<b>929</b>	<b>0</b>	<b>2</b>	<b>0</b>	<b>7</b>	<b>8</b>	<b>45</b>	<b>66</b>	<b>173</b>	<b>208</b>	<b>274</b>	<b>146</b>
Lip, oral cavity, pharynx	8	C00-C14	11	0	0	0	0	0	0	2	1	0	7	1
Oesophagus	9	C15	27	0	0	0	0	0	0	1	4	8	9	5
Stomach	10	C16	31	0	0	0	0	0	3	1	5	5	14	3
Colon	11	C18	66	0	0	0	0	0	0	1	10	11	23	21
Rectum and anus	12	C19-C21	43	0	0	0	0	0	1	6	4	11	13	8
Liver and the intrahepatic bile ducts	13	C22	28	0	0	0	0	0	0	0	3	9	5	11
Pancreas	14	C25	59	0	0	0	0	0	1	4	14	13	19	8
Larynx and trachea/bronchus /lung	15	C32-C34	170	0	0	0	0	0	5	3	40	47	58	17
Skin	16	C43	12	0	0	0	0	0	2	0	3	1	1	5
Breast	17	C50	152	0	0	0	0	1	11	24	30	28	40	18
Cervix uteri	18	C53	19	0	0	0	0	2	5	1	5	5	0	1
Other parts of uterus	19	C54-C55	14	0	0	0	0	0	1	1	5	3	2	2
Ovary	20	C56	50	0	0	0	2	0	2	4	7	15	14	6
Prostate	21	C61	0	0	0	0	0	0	0	0	0	0	0	0
Kidney	22	C64	22	0	1	0	0	0	0	2	4	5	5	5
Bladder	23	C67	10	0	0	0	0	0	1	2	0	2	2	3
Lymph/haematopoietic tissue	24	C81-C96	79	0	1	0	1	3	5	4	13	20	19	13
Other malignant neoplasms			136	0	0	0	4	2	8	10	25	25	43	19
<b>Diseases of the blood and blood-forming organs, immunological disorders</b>	<b>25</b>	<b>D50-D89</b>	<b>12</b>	<b>0</b>	<b>1</b>	<b>0</b>	<b>0</b>	<b>1</b>	<b>1</b>	<b>1</b>	<b>2</b>	<b>0</b>	<b>3</b>	<b>3</b>
<b>Endocrine, Nutritional and metabolic diseases</b>	<b>26</b>	<b>E00-E90</b>	<b>63</b>	<b>1</b>	<b>0</b>	<b>0</b>	<b>1</b>	<b>0</b>	<b>1</b>	<b>2</b>	<b>3</b>	<b>17</b>	<b>15</b>	<b>23</b>
Diabetes mellitus	27	E10-E14	38	0	0	0	1	0	1	1	3	8	10	14
<b>Mental and behavioural disorders</b>	<b>28</b>	<b>F00-F99</b>	<b>100</b>	<b>0</b>	<b>0</b>	<b>0</b>	<b>0</b>	<b>2</b>	<b>0</b>	<b>0</b>	<b>2</b>	<b>1</b>	<b>21</b>	<b>74</b>
<b>Diseases of the nervous system and the sense organs</b>	<b>31</b>	<b>G00-H95</b>	<b>146</b>	<b>0</b>	<b>1</b>	<b>2</b>	<b>2</b>	<b>3</b>	<b>2</b>	<b>5</b>	<b>9</b>	<b>15</b>	<b>50</b>	<b>57</b>
Meningitis	32	G00-G03	0	0	0	0	0	0	0	0	0	0	0	0
<b>Diseases of the Circulatory System:-</b>	<b>33</b>	<b>I00-I99</b>	<b>1,111</b>	<b>0</b>	<b>0</b>	<b>0</b>	<b>2</b>	<b>5</b>	<b>6</b>	<b>21</b>	<b>51</b>	<b>108</b>	<b>343</b>	<b>575</b>
Ischaemic heart disease	34	I20-I25	519	0	0	0	0	0	1	9	33	47	152	277
of which: (Acute myocardial infarction)		I21	272	0	0	0	0	0	1	4	16	20	89	142
Other heart disease	35	I30-I33,I39-I52	141	0	0	0	0	2	1	1	3	14	41	79
Cerebrovascular disease	36	I60-I69	289	0	0	0	2	1	2	9	7	32	93	143
Other diseases of circulatory system			162	0	0	0	0	2	2	2	8	15	57	76



<b>Diseases of the Respiratory system</b>	<b>37</b>	<b>J00-J99</b>	<b>397</b>	<b>0</b>	<b>0</b>	<b>0</b>	<b>0</b>	<b>0</b>	<b>2</b>	<b>8</b>	<b>17</b>	<b>37</b>	<b>117</b>	<b>216</b>
Influenza	38	J10-J11	0	0	0	0	0	0	0	0	0	0	0	0
Pneumonia	39	J12-J19	168	0	0	0	0	0	1	2	2	7	48	108
Chronic Lower respiratory disease of which: <i>Asthma</i>	40 41	J40-J47 J45-J46	157 6	0 0	0 0	0 0	0 0	0 0	1 0	2 0	12 0	21 2	53 1	68 3
Other diseases of the respiratory system			72	0	0	0	0	0	0	4	3	9	16	40
<b>Diseases of the Digestive system</b>	<b>42</b>	<b>K00-K93</b>	<b>121</b>	<b>0</b>	<b>0</b>	<b>0</b>	<b>0</b>	<b>3</b>	<b>2</b>	<b>10</b>	<b>15</b>	<b>15</b>	<b>35</b>	<b>41</b>
Ulcer of stomach, duodenum and jejunum	43	K25-K28	13	0	0	0	0	0	0	1	0	2	4	6
Chronic liver disease	44	K70,K73-K74	22	0	0	0	0	1	2	6	5	4	4	0
Other diseases of the digestive system			86	0	0	0	0	2	0	3	10	9	27	35
<b>Diseases of the skin and subcutaneous tissue</b>	<b>45</b>	<b>L00-L99</b>	<b>16</b>	<b>0</b>	<b>0</b>	<b>0</b>	<b>0</b>	<b>0</b>	<b>0</b>	<b>0</b>	<b>0</b>	<b>2</b>	<b>6</b>	<b>8</b>
<b>Diseases of the musculoskeletal system/connective tissue</b>	<b>46</b>	<b>M00-M99</b>	<b>34</b>	<b>0</b>	<b>0</b>	<b>0</b>	<b>0</b>	<b>0</b>	<b>0</b>	<b>1</b>	<b>0</b>	<b>5</b>	<b>13</b>	<b>15</b>
Rheumatoid arthritis and osteoarthritis	47	M05-M06,M15-M19	8	0	0	0	0	0	0	0	0	1	5	2
<b>Diseases of the genitourinary system</b>	<b>48</b>	<b>N00-N99</b>	<b>82</b>	<b>0</b>	<b>0</b>	<b>0</b>	<b>0</b>	<b>0</b>	<b>2</b>	<b>2</b>	<b>2</b>	<b>10</b>	<b>27</b>	<b>39</b>
Diseases of the kidney and ureter	49	N00-N29	63	0	0	0	0	0	2	2	2	10	21	26
<b>Complications of pregnancy, childbirth and puerperium</b>	<b>50</b>	<b>O00-O99</b>	<b>1</b>	<b>0</b>	<b>0</b>	<b>0</b>	<b>0</b>	<b>0</b>	<b>1</b>	<b>0</b>	<b>0</b>	<b>0</b>	<b>0</b>	<b>0</b>
<b>Certain conditions originating in the perinatal period<sup>1</sup></b>	<b>51</b>	<b>P00-P96</b>	<b>8</b>	<b>8</b>	<b>0</b>	<b>0</b>	<b>0</b>	<b>0</b>	<b>0</b>	<b>0</b>	<b>0</b>	<b>0</b>	<b>0</b>	<b>0</b>
<b>Congenital malformations and chromosomal abnormalities</b>	<b>52</b>	<b>Q00-Q99</b>	<b>17</b>	<b>7</b>	<b>2</b>	<b>0</b>	<b>0</b>	<b>0</b>	<b>3</b>	<b>2</b>	<b>1</b>	<b>1</b>	<b>0</b>	<b>1</b>
Congenital malformations of the:-														
Nervous system	53	Q00-Q07	3	2	1	0	0	0	0	0	0	0	0	0
Circulatory system	54	Q20-Q28	7	3	0	0	0	0	3	0	0	0	0	1
<b>Symptoms, signs, abnormal findings, ill-defined causes</b>	<b>55</b>	<b>R00-R99</b>	<b>8</b>	<b>0</b>	<b>0</b>	<b>0</b>	<b>0</b>	<b>1</b>	<b>0</b>	<b>0</b>	<b>1</b>	<b>1</b>	<b>1</b>	<b>4</b>
Sudden infant death syndrome	56	R95	0	0	0	0	0	0	0	0	0	0	0	0
Unknown and unspecified causes	57	R96-R99	5	0	0	0	0	1	0	0	1	1	0	2
<b>External causes of injury and poisoning</b>	<b>58</b>	<b>V01-Y89</b>	<b>157</b>	<b>0</b>	<b>2</b>	<b>3</b>	<b>9</b>	<b>31</b>	<b>14</b>	<b>21</b>	<b>22</b>	<b>14</b>	<b>16</b>	<b>25</b>
Accidents	59	V01-X59	101	0	2	2	5	15	7	14	13	5	14	24
of which: <i>Transport accidents</i>	60	V01-V99	15	0	0	2	3	2	2	1	2	0	1	2
<i>Accidental falls</i>	61	W00-W19	30	0	0	0	0	2	0	2	5	2	9	10
<i>Accidental poisoning</i>	62	X40-X49	30	0	0	0	1	7	3	11	4	1	2	1
<i>other accidents</i>			26	0	2	0	1	4	2	0	2	2	2	11
Suicide and intentional self harm	63	X60-X84	31	0	0	0	3	11	5	4	5	3	0	0
Homicide/assault	64	X85-Y09	0	0	0	0	0	0	0	0	0	0	0	0
Events of undetermined intent	65	Y10-Y34	19	0	0	1	1	5	2	2	3	4	0	1
All other external causes			6	0	0	0	0	0	0	1	1	2	2	0

<sup>1</sup> Stillbirths not included.

**Table 1.14 Infant and neonatal mortality by area of residence of deceased, October - December 2009**

Area of residence	Infant mortality		Neonatal mortality	
	Number	Rate	Number	Rate
<b>STATE</b>	<b>49</b>	<b>2.8</b>	<b>34</b>	<b>2.0</b>
<b>LEINSTER</b>	<b>21</b>	<b>2.2</b>	<b>12</b>	<b>1.3</b>
Carlow	1	4.4	1	4.4
Dublin City	5	2.6	4	2.1
South Dublin	1	1.0	0	0.0
Fingal	3	2.5	1	0.8
Dun Laoghaire Rathdown	2	3.1	1	1.6
Kildare	0	0.0	0	0.0
Kilkenny	1	3.1	1	3.1
Laois	1	3.3	0	0.0
Longford	1	6.3	0	0.0
Louth	0	0.0	0	0.0
Meath	0	0.0	0	0.0
Offaly	2	7.1	2	7.1
Westmeath	1	3.3	0	0.0
Wexford	2	3.7	1	1.9
Wicklow	1	1.8	1	1.8
<b>MUNSTER</b>	<b>21</b>	<b>4.4</b>	<b>16</b>	<b>3.4</b>
Clare	5	11.5	4	9.2
Cork City	1	2.7	0	0.0
Cork County	7	4.3	6	3.7
Kerry	0	0.0	0	0.0
Limerick City	1	5.3	0	0.0
Limerick County	1	1.7	1	1.7
North Tipperary	2	6.8	2	6.8
South Tipperary	2	6.2	1	3.1
Waterford City	1	4.7	1	4.7
Waterford County	1	4.2	1	4.2
<b>CONNACHT</b>	<b>3</b>	<b>1.5</b>	<b>3</b>	<b>1.5</b>
Galway City	0	0.0	0	0.0
Galway County	2	3.1	2	3.1
Leitrim	0	0.0	0	0.0
Mayo	1	2.1	1	2.1
Roscommon	0	0.0	0	0.0
Sligo	0	0.0	0	0.0
<b>ULSTER (PART OF)</b>	<b>4</b>	<b>3.8</b>	<b>3</b>	<b>2.8</b>
Cavan	1	3.3	1	3.3
Donegal	2	3.7	1	1.8
Monaghan	1	4.7	1	4.7
<b>REGIONAL AUTHORITIES:</b>				
Border	4	2.2	3	1.7
Midland	5	4.8	2	1.9
West	3	1.9	3	1.9
Dublin	11	2.3	6	1.2
Mid-East	1	0.4	1	0.4
Mid-West	9	6.0	7	4.7
South-East	8	4.3	6	3.2
South-West	8	3.2	6	2.4

Infant mortality rates: Deaths of infants under one year per 1,000 live births, classified by area of residence of mother.

Neonatal mortality rates: Deaths of infants under 28 days per 1,000 live births, classified by area of residence of mother.

Infant and neonatal mortality rates in some areas, based on small numbers are subject to considerable fluctuation and caution should be exercised in their interpretation.

## **Yearly Summary 2009**

# Yearly Summary 2009

## Commentary

### Introduction

This report has been prepared by the Central Statistics Office for the Minister for Health and Children in accordance with the provisions of Section 2 of the Vital Statistics and Births, Deaths and Marriages Registration Act, 1952 and Section 73 of the Civil Registration Act 2004.

**Fig 2.1 Average age at maternity in years, 2009**

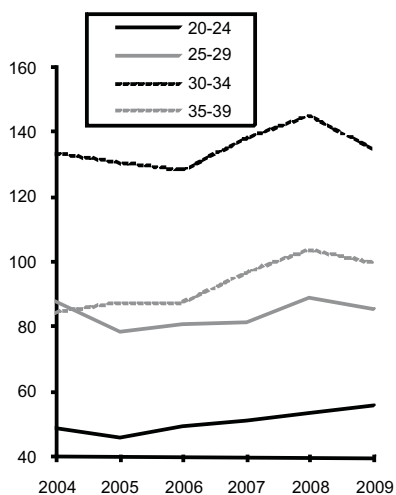
	Total births	First births
All births	31.3	29.1
Inside marriage	33.0	31.4
Outside marriage	27.7	26.1

### Births

There were 74,278 births registered in 2009, 38,082 males and 36,196 females, a decrease of 787 on 2008. The 2009 total is 36.9% higher than in 2000 when 54,239 babies were registered. See tables 2.1 and 2.2.

The 74,278 births represent an annual birth rate of 16.7 per 1,000 of the population, 0.3 below 2008. This rate is 2.4 per 1,000 population higher than in 2000. See table 2.2.

**Fig 2.2 Age specific fertility rates - live births per 1,000 females**



### Fertility

The total period fertility rate, TPF<sub>R</sub>, is derived from the age specific fertility rates in the current year. It represents the projected number of children a woman would have if she experienced current age specific fertility rates while progressing from age 15-49 years. A value of 2.1 is generally considered to be the level at which the population would replace itself in the long run, ignoring migration.

In 2009 the TPF<sub>R</sub> for Ireland was 2.07 and is just below replacement level. See table 2.1.

### Birth order

A total of 31,351 births (42.4%) were to first time mothers in 2009. Second time mothers had 23,607 births (31.9%). See table 2.3 and fig.2.2. This compares to 21,997 (40.8%) first births registered in 2000.

### Births outside marriage

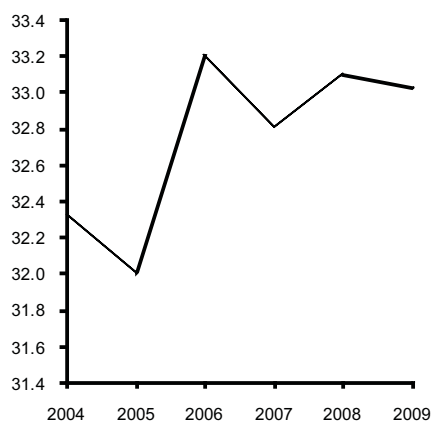
There were 24,532 births registered as outside marriage in 2009. This accounted for 33% of all births, a decrease of 0.1% on 2008. The highest percentage of births outside marriage occurred in Limerick City at 49%, while the lowest percentage was 23% which occurred in both Galway County and Leitrim, see table 2.5. In 2000, 17,235 births were registered outside marriage or 31.8% of all births.

A total of 2,223 teenagers had babies last year, 50 of these were aged under 16. More than 67% of births outside marriage were to women aged 30 years and under. See table 2.4.

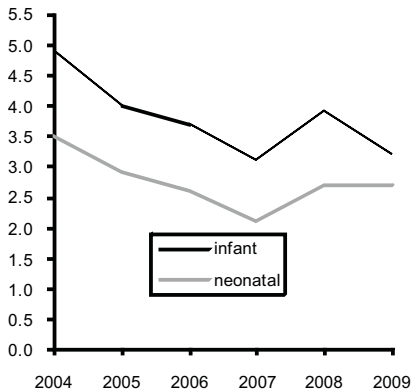
### Deaths

There were 28,898 deaths registered in 2009, 15,044 males and 13,854 females. This represents an annual death rate of 6.5 per 1,000 population. See table 2.9 and fig.2.1.

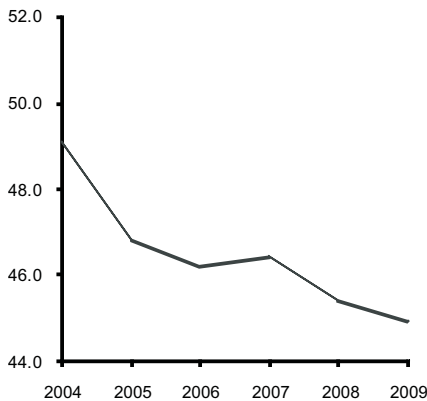
**Fig 2.3 Percentage of births outside marriage**



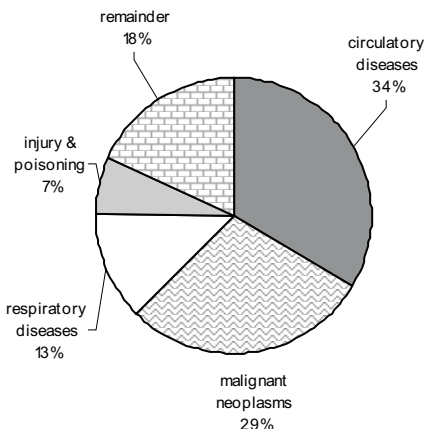
**Fig 2.4 Infant and neonatal mortality rates per 1,000 live births**



**Fig 2.5 Death rates for ages 65 & over per 1,000 relevant population**



**Fig 2.6 Principal causes of death, 2009**



## Age at death

There were 240 infant deaths registered in 2009 giving an infant mortality rate of 3.2 deaths per 1,000 live births. Neonatal deaths are deaths of infants at ages under 4 weeks. There were 169 neonatal deaths registered in 2009, a neonatal mortality rate of 2.3 deaths per 1,000 live births. See table 2.14 and fig. 2.4.

There were 22,232 deaths of persons aged 65 and over registered in 2009. This represents an annual death rate of 44.9 per 1,000 population aged 65 and over. See table 2.11 and fig. 2.5.

## Cause of death

### • Diseases of the Circulatory System:

Diseases of the Circulatory System accounted for 9,693 deaths, or an annual rate of 2.2 per 1,000 population. Of these, 5,128 were due to Ischaemic Heart Disease and 2,114 to Cerebrovascular Disease. See table 2.11 and fig. 2.6.

### • Malignant Neoplasms:

There were 8,396 deaths from malignant neoplasms. This is equivalent to an annual rate of 1.9 per 1,000 population. See table 2.11 and fig. 2.6.

### • Diseases of the Respiratory System:

Deaths from pneumonia numbered 1,375; chronic lower respiratory disease accounted for 1,533 deaths and 786 deaths resulted from other respiratory diseases. See table 2.11 and fig. 2.6.

## Marriages

The number of marriages registered during 2009 was 21,541 equivalent to an annual marriage rate of 4.8 per 1,000 population, slightly lower than 2008. The 2009 total is 12.4% higher than in 2000 when 19,168 marriages were registered. See tables 1.1 and 1.2.

## Divorces

The number of divorces granted in 2009 by the Circuit Court and the High Court was 3,341, a decrease of 289 on the 2008 figure. See table 2.15.

## Population

The estimated population in April 2009 was 4,459,300.

## Methodology

All figures in this report are classified by year of registration.

## Changes in methodology

The extension of the Limerick City boundary, which came into operation on 1st March 2008, has been taken into account in the compilation of the statistics from the Second Quarter of 2008.

This publication continues with the 3 major changes in the methods by which mortality statistics are compiled. These changes were introduced in the Vital Statistics First Quarter 2007 publication.

- 1 Underlying Cause of Death is classified according to International Classification of Diseases, Version 10 (ICD10) instead of to International Classification of Diseases, Version 9 (ICD9). In addition, this and future publications will incorporate certain official updates to ICD-10. In particular, mental and behavioural disorders due to psychoactive substance use (F10-F19), with mention of intestinal infectious diseases (A00-A09),

accidental, intentional self and undetermined intent poisoning by and exposure to noxious substances (X40-X49, X60-X69, Y10-Y19) or assault by chemical or noxious substance (X85-X90), are now coded to the latter. <http://www.who.int/classifications/icd/OfficialWHOUpdatesCombined1996-2008VOLUME2.pdf>

- 2 Deaths where there was not an inquest have been coded using the automated coding system developed by the U.S National Centre for Health Statistics (NCHS). Previously the Underlying Cause of Death was chosen manually for all deaths.
- 3 All deaths registered in the year have been included in the statistics, in some cases with a provisional cause of death. Previously the practice was not to include deaths in the annual summary statistics until the cause of death had been definitely established.

Because of these changes, caution should be taken in directly comparing these mortality statistics with those of previous years. Many countries have found that moving to ICD10 does affect certain specific categories of causes of death. In particular, a significant drop in the number of deaths attributed to pneumonia and bronchopneumonia has been observed in some countries after moving to ICD10. These deaths were instead assigned to other conditions included on the death certificate.

The effect of the third change above has been to increase the number of deaths in our statistics as compared with previous years. Statistics for deaths due to external causes are particularly affected by this change.

**Table 2.1 Births registered, classified by age of mother at maternity between 2007 and 2009 and their corresponding annual age specific (asfr) and total period fertility rates (tpfr)**

Period	Under 20	20-24	25-29	30-34	35-39	40-44	45&over	Age not stated	All ages
<b>Number of live births</b>									
<b>Quarter 1</b>									
2007	594	2,291	3,942	5,946	3,935	727	33	5	17,473
2008	644	2,519	4,507	6,372	4,283	796	30	3	19,154
2009	591	2,325	4,476	6,212	4,310	819	48	6	18,787
<b>Quarter 2</b>									
2007	640	2,039	3,975	5,909	3,784	751	24	5	17,127
2008	634	2,240	4,486	6,532	4,270	832	39	7	19,040
2009	574	2,131	4,594	6,326	4,347	818	40	14	18,844
<b>Quarter 3</b>									
2007	602	2,311	4,390	6,446	4,038	729	33	5	18,554
2008	618	2,387	4,574	6,393	4,263	711	37	8	18,991
2009	555	2,332	4,645	6,544	4,334	836	37	6	19,289
<b>Quarter 4</b>									
2007	628	2,222	4,029	5,850	3,971	730	31	5	17,466
2008	530	2,146	4,303	6,117	3,996	739	43	6	17,880
2009	503	1,945	4,180	5,813	4,129	741	40	7	17,358
<b>Total</b>									
2007	2,464	8,863	16,336	24,151	15,728	2,937	121	20	70,620
2008	2,426	9,292	17,870	25,414	16,812	3,078	149	24	75,065
2009	2,223	8,733	17,895	24,895	17,120	3,214	165	33	74,278
<b>Live births per 1,000 relevant female population (ASFR)</b>									
<b>TPFR</b>									
<b>Quarter 1</b>									
2007	16.9	53.0	78.7	135.7	96.9	19.1	0.9		2.01
2008	18.5	59.9	87.0	140.4	101.9	20.6	0.8		2.15
2009	17.0	55.3	86.4	136.9	102.6	21.2	1.3		2.10
<b>Quarter 2</b>									
2007	18.2	47.2	79.4	134.9	93.2	19.7	0.7		1.97
2008	18.2	53.3	86.6	143.9	101.6	21.5	1.1		2.13
2009	16.8	54.6	88.1	136.6	100.9	21.1	1.1		2.10
<b>Quarter 3</b>									
2007	17.1	53.5	87.6	147.1	99.4	19.2	0.9		2.12
2008	17.8	56.8	88.3	140.9	101.5	18.4	1.0		2.12
2009	16.2	59.8	89.0	141.2	100.6	21.6	1.0		2.15
<b>Quarter 4</b>									
2007	17.9	51.4	80.4	133.5	97.8	19.2	0.9		2.01
2008	15.2	51.0	83.1	134.8	95.1	19.1	1.2		2.00
2009	14.7	49.9	80.1	125.5	95.8	19.1	1.1		1.93
<b>Total</b>									
2007	17.5	51.3	81.5	137.8	96.8	19.3	0.9		2.03
2008	17.4	55.2	86.2	140.0	100.0	19.9	1.0		2.10
2009	16.3	56.0	85.7	134.3	99.3	20.7	1.1		2.07

**Table 2.2 Births registered, classified by area of residence of mother, 2009**

Area of residence	Total	Male	Female	Rate <sup>(a)</sup>
<b>STATE</b>	<b>74,278</b>	<b>38,082</b>	<b>36,196</b>	<b>16.7</b>
<b>LEINSTER</b>	<b>41,763</b>	<b>21,410</b>	<b>20,353</b>	<b>17.3</b>
Carlow	976	474	502	18.4
Dublin City	7,827	4,029	3,798	14.7
South Dublin	4,522	2,314	2,208	17.4
Fingal	5,430	2,866	2,564	21.5
Dun Laoghaire Rathdown	2,828	1,488	1,340	13.9
Kildare	3,942	1,976	1,966	20.1
Kilkenny	1,392	750	642	15.1
Laois	1,368	706	662	19.4
Longford	707	349	358	19.5
Louth	1,858	948	910	15.9
Meath	3,474	1,748	1,726	20.3
Offaly	1,229	628	601	16.5
Westmeath	1,390	712	678	16.7
Wexford	2,385	1,190	1,195	17.2
Wicklow	2,435	1,232	1,203	18.3
<b>MUNSTER</b>	<b>20,066</b>	<b>10,339</b>	<b>9,727</b>	<b>16.3</b>
Clare	1,889	969	920	16.2
Cork City	1,729	882	847	13.8
Cork County	6,748	3,474	3,274	17.7
Kerry	2,149	1,101	1,048	14.6
Limerick City	867	467	400	13.8
Limerick County	2,254	1,184	1,070	17.2
North Tipperary	1,214	615	599	17.5
South Tipperary	1,338	715	623	15.3
Waterford City	844	418	426	17.5
Waterford County	1,034	514	520	15.8
<b>CONNACHT</b>	<b>8,163</b>	<b>4,161</b>	<b>4,002</b>	<b>15.4</b>
Galway City	1,056	510	546	13.9
Galway County	2,918	1,509	1,409	17.4
Leitrim	481	241	240	15.8
Mayo	1,854	952	902	14.2
Roscommon	910	472	438	14.7
Sligo	944	477	467	14.7
<b>ULSTER (PART OF)</b>	<b>4,286</b>	<b>2,172</b>	<b>2,114</b>	<b>15.2</b>
Cavan	1,212	621	591	18.0
Donegal	2,284	1,159	1,125	14.7
Monaghan	790	392	398	13.4
<b>REGIONAL AUTHORITIES:</b>				
Border	7,569	3,838	3,731	15.2
Midland	4,694	2,395	2,299	17.4
West	6,738	3,443	3,295	15.7
Dublin	20,607	10,697	9,910	16.8
Mid-East	9,851	4,956	4,895	19.0
Mid-West	6,224	3,235	2,989	16.6
South-East	7,969	4,061	3,908	16.2
South-West	10,626	5,457	5,169	16.3

<sup>(a)</sup> Births per year per 1,000 population. Annual rates based on estimated 2009 population.



**Table 2.3 Births registered, classified by age of mother and previous number of liveborn children, 2009**

Age of mother at maternity	Previous number of liveborn children												
	Total	0	1	2	3	4	5	6	7	8	9	10 or more	Not stated
<b>All ages</b>	<b>74,278</b>	<b>31,351</b>	<b>23,607</b>	<b>12,139</b>	<b>4,581</b>	<b>1,369</b>	<b>513</b>	<b>185</b>	<b>78</b>	<b>43</b>	<b>20</b>	<b>19</b>	<b>373</b>
<b>15 and under</b>	<b>50</b>	<b>50</b>	-	-	-	-	-	-	-	-	-	-	-
16	151	149	2	-	-	-	-	-	-	-	-	-	-
17	363	339	24	-	-	-	-	-	-	-	-	-	-
18	637	579	51	4	-	-	-	-	-	-	-	-	3
19	1,022	896	113	8	1	-	-	-	-	-	-	-	4
<b>Under 20</b>	<b>2,223</b>	<b>2,013</b>	<b>190</b>	<b>12</b>	<b>1</b>	-	-	-	-	-	-	-	<b>7</b>
20	1,246	964	241	30	7	-	-	-	-	-	-	-	4
21	1,481	1,094	321	57	3	2	-	-	-	-	-	-	4
22	1,789	1,191	451	117	26	1	-	-	-	-	-	-	3
23	1,994	1,239	553	156	33	4	-	-	-	-	-	-	9
24	2,223	1,250	684	204	62	11	1	1	-	-	-	-	10
<b>20-24</b>	<b>8,733</b>	<b>5,738</b>	<b>2,250</b>	<b>564</b>	<b>131</b>	<b>18</b>	<b>1</b>	<b>1</b>	-	-	-	-	<b>30</b>
25	2,593	1,437	781	264	78	20	2	2	-	-	-	-	9
26	3,151	1,706	959	339	100	26	5	-	-	-	-	-	16
27	3,564	1,855	1,098	404	137	37	11	3	1	1	-	-	17
28	4,020	1,986	1,264	491	173	49	23	12	4	-	-	-	18
29	4,567	2,227	1,419	563	228	69	30	7	1	-	-	-	23
<b>25-29</b>	<b>17,895</b>	<b>9,211</b>	<b>5,521</b>	<b>2,061</b>	<b>716</b>	<b>201</b>	<b>71</b>	<b>24</b>	<b>6</b>	<b>1</b>	-	-	<b>83</b>
30	4,773	2,259	1,544	613	240	61	27	7	5	1	-	-	16
31	4,992	2,143	1,749	732	235	77	28	7	2	1	1	-	17
32	5,139	2,081	1,831	789	262	90	38	13	2	4	1	-	28
33	5,167	1,797	1,929	940	323	88	36	13	7	1	1	-	32
34	4,824	1,445	1,847	999	354	87	34	18	7	7	-	-	26
<b>30-34</b>	<b>24,895</b>	<b>9,725</b>	<b>8,900</b>	<b>4,073</b>	<b>1,414</b>	<b>403</b>	<b>163</b>	<b>58</b>	<b>23</b>	<b>14</b>	<b>3</b>	-	<b>119</b>
35	4,645	1,264	1,655	1,168	353	127	29	10	5	2	-	2	30
36	4,149	981	1,517	1,057	412	90	33	15	3	4	1	2	34
37	3,462	771	1,096	996	415	98	46	13	4	4	5	1	13
38	2,771	575	819	816	370	108	47	11	6	5	2	1	11
39	2,093	389	642	574	299	105	33	16	6	4	5	4	16
<b>35-39</b>	<b>17,120</b>	<b>3,980</b>	<b>5,729</b>	<b>4,611</b>	<b>1,849</b>	<b>528</b>	<b>188</b>	<b>65</b>	<b>24</b>	<b>19</b>	<b>13</b>	<b>10</b>	<b>104</b>
40	1,386	259	424	354	195	88	27	15	5	1	3	1	14
41	873	170	255	211	127	57	26	11	6	2	-	-	8
42	519	113	147	114	73	38	15	3	6	3	1	3	3
43	292	56	86	68	45	17	8	5	4	1	-	2	-
44	144	34	45	28	17	5	6	3	3	-	-	1	2
<b>40-44</b>	<b>3,214</b>	<b>632</b>	<b>957</b>	<b>775</b>	<b>457</b>	<b>205</b>	<b>82</b>	<b>37</b>	<b>24</b>	<b>7</b>	<b>4</b>	<b>7</b>	<b>27</b>
<b>45 and over</b>	<b>165</b>	<b>41</b>	<b>48</b>	<b>36</b>	<b>12</b>	<b>13</b>	<b>8</b>	-	<b>1</b>	<b>2</b>	-	<b>2</b>	<b>2</b>
Age not stated	33	11	12	7	1	1	-	-	-	-	-	-	1

**Table 2.4 Number and percentage of births registered within and outside marriage, classified by age of mother, 2009**

Age of mother at maternity	Total	Married parents	Unmarried Parents		% to married parents	% to unmarried parents	
			Total	Same address		Total	Same address
	Number				Percentage		
<b>All ages</b>	<b>74,278</b>	<b>49,746</b>	<b>24,532</b>	<b>13,647</b>	<b>67</b>	<b>33</b>	<b>18</b>
<b>15 and under</b>	<b>50</b>	<b>-</b>	<b>50</b>	<b>6</b>	<b>-</b>	<b>100</b>	<b>12</b>
16	151	4	147	18	3	97	12
17	363	26	337	76	7	93	21
18	637	44	593	161	7	93	25
19	1,022	102	920	276	10	90	27
<b>Under 20</b>	<b>2,223</b>	<b>176</b>	<b>2,047</b>	<b>537</b>	<b>8</b>	<b>92</b>	<b>24</b>
20	1,246	159	1,087	372	13	87	30
21	1,481	244	1,237	475	16	84	32
22	1,789	375	1,414	649	21	79	36
23	1,994	492	1,502	713	25	75	36
24	2,223	713	1,510	835	32	68	38
<b>20-24</b>	<b>8,733</b>	<b>1,983</b>	<b>6,750</b>	<b>3,044</b>	<b>23</b>	<b>77</b>	<b>35</b>
25	2,593	1,055	1,538	885	41	59	34
26	3,151	1,522	1,629	978	48	52	31
27	3,564	1,941	1,623	1,036	54	46	29
28	4,020	2,547	1,473	912	63	37	23
29	4,567	3,166	1,401	921	69	31	20
<b>25-29</b>	<b>17,895</b>	<b>10,231</b>	<b>7,664</b>	<b>4,732</b>	<b>57</b>	<b>43</b>	<b>26</b>
30	4,773	3,522	1,251	837	74	26	18
31	4,992	3,925	1,067	713	79	21	14
32	5,139	4,193	946	632	82	18	12
33	5,167	4,338	829	560	84	16	11
34	4,824	4,085	739	500	85	15	10
<b>30-34</b>	<b>24,895</b>	<b>20,063</b>	<b>4,832</b>	<b>3,242</b>	<b>81</b>	<b>19</b>	<b>13</b>
35	4,645	3,926	719	454	85	15	10
36	4,149	3,530	619	412	85	15	10
37	3,462	2,967	495	323	86	14	9
38	2,771	2,364	407	277	85	15	10
39	2,093	1,751	342	217	84	16	10
<b>35-39</b>	<b>17,120</b>	<b>14,538</b>	<b>2,582</b>	<b>1,683</b>	<b>85</b>	<b>15</b>	<b>10</b>
40	1,386	1,150	236	160	83	17	12
41	873	702	171	100	80	20	11
42	519	403	116	75	78	22	14
43	292	237	55	31	81	19	11
44	144	116	28	17	81	19	12
<b>40-44</b>	<b>3,214</b>	<b>2,608</b>	<b>606</b>	<b>383</b>	<b>81</b>	<b>19</b>	<b>12</b>
<b>45 and over</b>	<b>165</b>	<b>126</b>	<b>39</b>	<b>21</b>	<b>76</b>	<b>24</b>	<b>13</b>
Age not stated	33	21	12	5	64	36	15

**Table 2.5 Number and percentage of births registered within and outside marriage, classified by area of residence of mother, 2009**

Area of residence	Total	Married parents	Unmarried Parents		% to married parents	% to unmarried parents	
			Total	Same address		Total	Same address
	Number				Percentage		
<b>STATE</b>	<b>74,278</b>	<b>49,746</b>	<b>24,532</b>	<b>13,647</b>	<b>67</b>	<b>33</b>	<b>18</b>
<b>LEINSTER</b>	<b>41,763</b>	<b>27,054</b>	<b>14,709</b>	<b>7,768</b>	<b>65</b>	<b>35</b>	<b>19</b>
Carlow	976	580	396	239	59	41	24
Dublin City	7,827	4,459	3,368	1,398	57	43	18
South Dublin	4,522	2,621	1,901	820	58	42	18
Fingal	5,430	3,790	1,640	918	70	30	17
Dun Laoghaire Rathdown	2,828	2,093	735	385	74	26	14
Kildare	3,942	2,740	1,202	748	70	30	19
Kilkenny	1,392	965	427	234	69	31	17
Laois	1,368	876	492	330	64	36	24
Longford	707	473	234	131	67	33	19
Louth	1,858	1,139	719	403	61	39	22
Meath	3,474	2,538	936	630	73	27	18
Offaly	1,229	829	400	275	67	33	22
Westmeath	1,390	933	457	280	67	33	20
Wexford	2,385	1,408	977	520	59	41	22
Wicklow	2,435	1,610	825	457	66	34	19
<b>MUNSTER</b>	<b>20,066</b>	<b>13,830</b>	<b>6,236</b>	<b>3,770</b>	<b>69</b>	<b>31</b>	<b>19</b>
Clare	1,889	1,350	539	365	71	29	19
Cork City	1,729	975	754	407	56	44	24
Cork County	6,748	5,104	1,644	1,066	76	24	16
Kerry	2,149	1,511	638	339	70	30	16
Limerick City	867	439	428	225	51	49	26
Limerick County	2,254	1,631	623	434	72	28	19
North Tipperary	1,214	808	406	265	67	33	22
South Tipperary	1,338	841	497	268	63	37	20
Waterford City	844	481	363	197	57	43	23
Waterford County	1,034	690	344	204	67	33	20
<b>CONNACHT</b>	<b>8,163</b>	<b>5,957</b>	<b>2,206</b>	<b>1,392</b>	<b>73</b>	<b>27</b>	<b>17</b>
Galway City	1,056	686	370	218	65	35	21
Galway County	2,918	2,239	679	474	77	23	16
Leitrim	481	368	113	80	77	23	17
Mayo	1,854	1,336	518	287	72	28	15
Roscommon	910	687	223	156	75	25	17
Sligo	944	641	303	177	68	32	19
<b>ULSTER (PART OF)</b>	<b>4,286</b>	<b>2,905</b>	<b>1,381</b>	<b>717</b>	<b>68</b>	<b>32</b>	<b>17</b>
Cavan	1,212	834	378	267	69	31	22
Donegal	2,284	1,502	782	314	66	34	14
Monaghan	790	569	221	136	72	28	17
<b>REGIONAL AUTHORITIES:</b>							
Border	7,569	5,053	2,516	1,377	67	33	18
Midland	4,694	3,111	1,583	1,016	66	34	22
West	6,738	4,948	1,790	1,135	73	27	17
Dublin	20,607	12,963	7,644	3,521	63	37	17
Mid-East	9,851	6,888	2,963	1,835	70	30	19
Mid-West	6,224	4,228	1,996	1,289	68	32	21
South-East	7,969	4,965	3,004	1,662	62	38	21
South-West	10,626	7,590	3,036	1,812	71	29	17

**Table 2.6 Births registered, classified by area of residence and age of mother, 2009**

Area of residence	Total	Under 20	20-24	25-29	30-34	35-39	40 and over	Age not stated	Average age of mother at maternity	
									Total	First
<b>STATE</b>	<b>74,278</b>	<b>2,223</b>	<b>8,733</b>	<b>17,895</b>	<b>24,895</b>	<b>17,120</b>	<b>3,379</b>	<b>33</b>	<b>31.3</b>	<b>29.1</b>
<b>LEINSTER</b>	<b>41,763</b>	<b>1,317</b>	<b>5,173</b>	<b>10,192</b>	<b>13,758</b>	<b>9,504</b>	<b>1,801</b>	<b>18</b>	<b>31.2</b>	<b>29.1</b>
Carlow	976	32	136	291	279	205	33	-	30.5	28.2
Dublin City	7,827	313	1,157	1,956	2,340	1,717	343	1	30.7	28.8
South Dublin	4,522	203	681	1,264	1,363	843	163	5	30.2	28.1
Fingal	5,430	117	575	1,276	1,985	1,268	207	2	31.5	29.6
Dun Laoghaire Rathdown	2,828	55	208	456	1,041	866	200	2	33.0	31.0
Kildare	3,942	95	413	924	1,383	963	160	4	31.6	29.5
Kilkenny	1,392	34	139	323	502	329	65	-	31.7	29.4
Laois	1,368	49	175	389	406	292	57	-	30.8	29.4
Longford	707	28	119	190	197	137	35	1	30.4	27.2
Louth	1,858	82	246	505	577	375	73	-	30.6	28.0
Meath	3,474	76	314	773	1,253	901	156	1	31.9	29.3
Offaly	1,229	42	176	332	379	248	51	1	30.6	28.5
Westmeath	1,390	45	189	361	434	299	61	1	30.9	28.6
Wexford	2,385	91	377	599	759	469	90	-	30.5	28.0
Wicklow	2,435	55	268	553	860	592	107	-	31.6	29.6
<b>MUNSTER</b>	<b>20,066</b>	<b>563</b>	<b>2,236</b>	<b>4,750</b>	<b>6,916</b>	<b>4,644</b>	<b>947</b>	<b>10</b>	<b>31.4</b>	<b>29.2</b>
Clare	1,889	68	210	400	635	469	106	1	31.6	28.9
Cork City	1,729	67	263	496	503	330	69	1	30.3	28.2
Cork County	6,748	129	568	1,409	2,578	1,742	317	5	32.1	30.0
Kerry	2,149	55	256	511	691	517	118	1	31.5	29.3
Limerick City	867	50	166	252	243	137	17	2	29.3	27.4
Limerick County	2,254	53	219	551	800	516	115	-	31.6	29.5
North Tipperary	1,214	38	132	304	408	272	60	-	31.3	28.9
South Tipperary	1,338	47	185	356	412	274	64	-	30.8	28.4
Waterford City	844	36	133	231	275	137	32	-	30.1	27.8
Waterford County	1,034	20	104	240	371	250	49	-	31.7	29.3
<b>CONNACHT</b>	<b>8,163</b>	<b>191</b>	<b>814</b>	<b>1,809</b>	<b>2,828</b>	<b>2,083</b>	<b>436</b>	<b>2</b>	<b>31.8</b>	<b>29.7</b>
Galway City	1,056	38	146	273	333	214	51	1	30.8	29.3
Galway County	2,918	55	221	567	1,065	837	172	1	32.5	30.5
Leitrim	481	7	49	109	177	109	30	-	31.9	30.0
Mayo	1,854	51	191	445	619	453	95	-	31.6	29.1
Roscommon	910	11	89	197	331	241	41	-	32.1	30.0
Sligo	944	29	118	218	303	229	47	-	31.3	28.4
<b>ULSTER (PART OF)</b>	<b>4,286</b>	<b>152</b>	<b>510</b>	<b>1,144</b>	<b>1,393</b>	<b>889</b>	<b>195</b>	<b>3</b>	<b>30.9</b>	<b>27.9</b>
Cavan	1,212	40	147	325	386	264	49	1	31.0	28.1
Donegal	2,284	87	280	616	728	456	115	2	30.9	27.7
Monaghan	790	25	83	203	279	169	31	-	31.1	28.1
<b>REGIONAL AUTHORITIES:</b>										
Border	7,569	270	923	1,976	2,450	1,602	345	3	31.0	28.1
Midland	4,694	164	659	1,272	1,416	976	204	3	30.7	28.7
West	6,738	155	647	1,482	2,348	1,745	359	2	31.9	29.8
Dublin	20,607	688	2,621	4,952	6,729	4,694	913	10	31.1	29.2
Mid-East	9,851	226	995	2,250	3,496	2,456	423	5	31.7	29.5
Mid-West	6,224	209	727	1,507	2,086	1,394	298	3	31.3	28.9
South-East	7,969	260	1,074	2,040	2,598	1,664	333	-	30.9	28.5
South-West	10,626	251	1,087	2,416	3,772	2,589	504	7	31.7	29.5

**Table 2.7 Births registered outside marriage, classified by area of residence and age of mother, 2009**

Area of residence	Total	Under 25	25-29	30-34	35-39	40 and over	Age not stated	Average age of mother at maternity	
								Total	First
<b>STATE</b>	<b>24,532</b>	<b>8,797</b>	<b>7,664</b>	<b>4,832</b>	<b>2,582</b>	<b>645</b>	<b>12</b>	<b>27.7</b>	<b>26.1</b>
<b>LEINSTER</b>	<b>14,709</b>	<b>5,219</b>	<b>4,632</b>	<b>2,888</b>	<b>1,572</b>	<b>392</b>	<b>6</b>	<b>27.8</b>	<b>26.1</b>
Carlow	396	135	137	76	40	8	-	27.6	25.7
Dublin City	3,368	1,224	1,027	652	378	86	1	27.7	26.2
South Dublin	1,901	713	624	343	171	48	2	27.3	25.3
Fingal	1,640	505	528	370	198	39	-	28.3	26.9
Dun Laoghaire Rathdown	735	221	192	174	112	35	1	29.1	27.8
Kildare	1,202	406	372	261	133	29	1	28.0	26.6
Kilkenny	427	143	134	92	43	15	-	28.0	26.3
Laois	492	183	164	74	58	13	-	27.5	26.5
Longford	234	90	82	38	20	4	-	26.9	24.5
Louth	719	282	221	126	72	18	-	27.3	24.9
Meath	936	294	327	180	105	30	-	28.2	26.0
Offaly	400	173	115	74	33	4	1	26.7	25.4
Westmeath	457	173	150	87	32	15	-	27.4	25.6
Wexford	977	394	292	177	89	25	-	27.3	25.6
Wicklow	825	283	267	164	88	23	-	27.9	26.6
<b>MUNSTER</b>	<b>6,236</b>	<b>2,260</b>	<b>1,954</b>	<b>1,245</b>	<b>624</b>	<b>149</b>	<b>4</b>	<b>27.7</b>	<b>26.0</b>
Clare	539	228	156	80	54	21	-	27.1	25.3
Cork City	754	279	239	154	69	12	1	27.5	25.8
Cork County	1,644	559	495	369	177	42	2	28.0	26.6
Kerry	638	231	188	107	88	24	-	28.1	26.1
Limerick City	428	177	138	82	27	3	1	26.7	25.2
Limerick County	623	213	202	127	67	14	-	27.9	26.3
North Tipperary	406	146	133	83	35	9	-	27.6	25.8
South Tipperary	497	186	176	90	35	10	-	27.1	25.6
Waterford City	363	134	112	77	34	6	-	27.5	25.4
Waterford County	344	107	115	76	38	8	-	28.2	26.0
<b>CONNACHT</b>	<b>2,206</b>	<b>756</b>	<b>675</b>	<b>436</b>	<b>273</b>	<b>65</b>	<b>1</b>	<b>28.1</b>	<b>26.6</b>
Galway City	370	125	112	78	43	11	1	28.2	26.6
Galway County	679	210	208	129	104	28	-	28.7	27.3
Leitrim	113	38	31	24	16	4	-	28.4	27.0
Mayo	518	182	164	100	56	16	-	27.8	26.3
Roscommon	223	78	73	50	20	2	-	27.8	26.6
Sligo	303	123	87	55	34	4	-	27.3	25.3
<b>ULSTER (PART OF)</b>	<b>1,381</b>	<b>562</b>	<b>403</b>	<b>263</b>	<b>113</b>	<b>39</b>	<b>1</b>	<b>27.1</b>	<b>24.8</b>
Cavan	378	152	113	77	34	2	-	27.1	25.3
Donegal	782	321	229	140	60	31	1	27.1	24.5
Monaghan	221	89	61	46	19	6	-	27.2	24.7
<b>REGIONAL AUTHORITIES:</b>									
Border	2,516	1,005	742	468	235	65	1	27.3	25.0
Midland	1,583	619	511	273	143	36	1	27.2	25.7
West	1,790	595	557	357	223	57	1	28.2	26.8
Dublin	7,644	2,663	2,371	1,539	859	208	4	27.9	26.3
Mid-East	2,963	983	966	605	326	82	1	28.0	26.4
Mid-West	1,996	764	629	372	183	47	1	27.4	25.7
South-East	3,004	1,099	966	588	279	72	-	27.6	25.7
South-West	3,036	1,069	922	630	334	78	3	27.9	26.3

**Table 2.8 Births registered in 2009, classified by nationality of mother, marital status and age, 2009**

Nationality of mother	Total births	% of total births	% of births outside marriage	Average age
<b>TOTAL</b>	<b>74,278</b>	<b>100</b>	<b>33</b>	<b>31.3</b>
Ireland	53,728	72	33	31.8
United Kingdom	1,673	2	41	31.6
EU15 excl. Irl & UK	1,001	1	38	32.8
Accession states (EU27 excl. EU15)	6,896	9	40	27.9
Other	6,326	9	21	30.7
Not stated	4,654	6	33	31.0

**Table 2.9 Deaths registered by county of residence of deceased, 2009**

Area of residence	Total	Male	Female	Rate <sup>(a)</sup>
<b>STATE</b>	<b>28,898</b>	<b>15,044</b>	<b>13,854</b>	<b>6.5</b>
<b>LEINSTER</b>	<b>14,434</b>	<b>7,321</b>	<b>7,113</b>	<b>6.0</b>
Carlow	346	179	167	6.5
Dublin City	4,348	2,163	2,185	8.2
South Dublin	914	473	441	3.5
Fingal	926	476	450	3.7
Dun Laoghaire Rathdown	1,353	648	705	6.6
Kildare	907	471	436	4.6
Kilkenny	583	287	296	6.3
Laois	412	212	200	5.8
Longford	293	137	156	8.1
Louth	780	400	380	6.7
Meath	823	441	382	4.8
Offaly	481	251	230	6.5
Westmeath	505	253	252	6.1
Wexford	983	514	469	7.1
Wicklow	780	416	364	5.9
<b>MUNSTER</b>	<b>8,613</b>	<b>4,595</b>	<b>4,018</b>	<b>7.0</b>
Clare	827	448	379	7.1
Cork City	1,138	568	570	9.1
Cork County	2,184	1,200	984	5.7
Kerry	1,131	622	509	7.7
Limerick City	427	238	189	6.8
Limerick County	955	499	456	7.3
North Tipperary	595	320	275	8.6
South Tipperary	596	307	289	6.8
Waterford City	287	157	130	6.0
Waterford County	473	236	237	7.2
<b>CONNACHT</b>	<b>3,807</b>	<b>2,072</b>	<b>1,735</b>	<b>7.2</b>
Galway City	179	94	85	2.4
Galway County	1,314	712	602	7.8
Leitrim	272	145	127	8.9
Mayo	1,041	573	468	8.0
Roscommon	543	320	223	8.8
Sligo	458	228	230	7.2
<b>ULSTER (PART OF)</b>	<b>2,044</b>	<b>1,056</b>	<b>988</b>	<b>7.3</b>
Cavan	509	271	238	7.6
Donegal	1,117	585	532	7.2
Monaghan	418	200	218	7.1
<b>REGIONAL AUTHORITIES:</b>				
Border	3,554	1,829	1,725	7.2
Midland	1,691	853	838	6.3
West	3,077	1,699	1,378	7.2
Dublin	7,541	3,760	3,781	6.1
Mid-East	2,510	1,328	1,182	4.8
Mid-West	2,804	1,505	1,299	7.5
South-East	3,268	1,680	1,588	6.6
South-West	4,453	2,390	2,063	6.9

(a) Deaths per year per 1,000 population. Annual rates based on estimated 2009 population.

**Table 2.10 Deaths registered by cause of death and county of residence of deceased, 2009**

Area of residence	Total deaths	Malignant Neoplasms	Diseases of the Circulatory system	Diseases of the Respiratory system	External causes	All other causes
<b>STATE</b>	<b>28,898</b>	<b>8,396</b>	<b>9,693</b>	<b>3,694</b>	<b>1,894</b>	<b>5,221</b>
<b>LEINSTER</b>	<b>14,434</b>	<b>4,302</b>	<b>4,598</b>	<b>1,912</b>	<b>985</b>	<b>2,637</b>
Carlow	346	101	125	47	18	55
Dublin City	4,348	1,270	1,344	609	310	815
South Dublin	914	264	283	106	91	170
Fingal	926	308	264	108	81	165
Dun Laoghaire Rathdown	1,353	466	395	164	87	241
Kildare	907	273	298	109	51	176
Kilkenny	583	190	189	79	24	101
Laois	412	110	156	56	16	74
Longford	293	75	96	47	14	61
Louth	780	206	248	115	76	135
Meath	823	226	269	100	66	162
Offaly	481	133	169	73	25	81
Westmeath	505	139	185	65	31	85
Wexford	983	303	322	121	62	175
Wicklow	780	238	255	113	33	141
<b>MUNSTER</b>	<b>8,613</b>	<b>2,460</b>	<b>3,016</b>	<b>1,058</b>	<b>580</b>	<b>1,499</b>
Clare	827	211	308	112	50	146
Cork City	1,138	333	360	135	93	217
Cork County	2,184	646	758	240	168	372
Kerry	1,131	296	446	147	52	190
Limerick City	427	122	141	64	32	68
Limerick County	955	262	337	133	61	162
North Tipperary	595	163	232	58	41	101
South Tipperary	596	170	198	58	41	129
Waterford City	287	94	96	40	16	41
Waterford County	473	163	140	71	26	73
<b>CONNACHT</b>	<b>3,807</b>	<b>1,079</b>	<b>1,379</b>	<b>453</b>	<b>204</b>	<b>692</b>
Galway City	179	52	58	19	15	35
Galway County	1,314	362	482	163	81	226
Leitrim	272	87	90	40	12	43
Mayo	1,041	276	396	119	51	199
Roscommon	543	164	199	68	18	94
Sligo	458	138	154	44	27	95
<b>ULSTER (PART OF)</b>	<b>2,044</b>	<b>555</b>	<b>700</b>	<b>271</b>	<b>125</b>	<b>393</b>
Cavan	509	117	167	68	46	111
Donegal	1,117	336	380	140	58	203
Monaghan	418	102	153	63	21	79
<b>REGIONAL AUTHORITIES:</b>						
Border	3,554	986	1,192	470	240	666
Midland	1,691	457	606	241	86	301
West	3,077	854	1,135	369	165	554
Dublin	7,541	2,308	2,286	987	569	1,391
Mid-East	2,510	737	822	322	150	479
Mid-West	2,804	758	1,018	367	184	477
South-East	3,268	1,021	1,070	416	187	574
South-West	4,453	1,275	1,564	522	313	779

**Table 2.11 Deaths registered classified by cause and age group, 2009**

Cause of Death	65 COD Code	ICD-10 Code	Total Deaths	Age Group										
				Under 1	1-4	5-14	15-24	25-34	35-44	45-54	55-64	65-74	75-84	85 and over
<b>Total deaths</b>	<b>0</b>	<b>A00-Y89</b>	<b>28,898</b>	<b>240</b>	<b>66</b>	<b>55</b>	<b>334</b>	<b>589</b>	<b>834</b>	<b>1,529</b>	<b>3,019</b>	<b>5,009</b>	<b>8,875</b>	<b>8,348</b>
<b>Infectious and parasitic diseases:-</b>	<b>1</b>	<b>A00-B99</b>	<b>254</b>	<b>1</b>	<b>7</b>	<b>1</b>	<b>5</b>	<b>18</b>	<b>13</b>	<b>17</b>	<b>21</b>	<b>38</b>	<b>71</b>	<b>62</b>
Tuberculosis	2	A15-A19,B90	36	0	0	0	0	2	0	0	3	9	13	9
Meningococcal infection	3	A39	8	0	3	1	1	0	0	0	0	1	2	0
AIDS (HIV Disease)	4	B20-B24	16	0	0	0	0	6	4	4	2	0	0	0
Viral Hepatitis	5	B15-B19	18	0	0	0	2	3	4	6	2	1	0	0
Other infectious and parasitic diseases			176	1	4	0	2	7	5	7	14	27	56	53
<b>Neoplasms</b>	<b>6</b>	<b>C00-D48</b>	<b>8,585</b>	<b>3</b>	<b>14</b>	<b>9</b>	<b>23</b>	<b>69</b>	<b>232</b>	<b>630</b>	<b>1,449</b>	<b>2,201</b>	<b>2,682</b>	<b>1,273</b>
<b>Malignant Neoplasms of the:-</b>	<b>7</b>	<b>C00-C97</b>	<b>8,396</b>	<b>2</b>	<b>11</b>	<b>8</b>	<b>23</b>	<b>65</b>	<b>229</b>	<b>621</b>	<b>1,431</b>	<b>2,167</b>	<b>2,615</b>	<b>1,224</b>
Lip, oral cavity, pharynx	8	C00-C14	127	0	0	0	1	1	2	12	24	39	34	14
Oesophagus	9	C15	350	0	0	0	0	0	7	20	66	97	103	57
Stomach	10	C16	357	0	0	0	1	1	10	23	51	96	116	59
Colon	11	C18	542	0	0	0	0	2	9	34	68	132	177	120
Rectum and anus	12	C19-C21	403	0	0	0	0	5	8	36	63	113	127	51
Liver and the intrahepatic bile ducts	13	C22	246	0	0	0	0	0	3	15	51	64	79	34
Pancreas	14	C25	483	0	0	0	0	0	13	36	84	142	143	65
Larynx and trachea/bronchus /lung	15	C32-C34	1,819	0	0	1	0	2	19	110	385	526	611	165
Skin	16	C43	126	0	0	0	2	2	16	16	19	26	21	24
Breast	17	C50	679	0	0	0	0	3	39	101	132	154	159	91
Cervix uteri	18	C53	93	0	0	0	0	4	18	17	20	18	11	5
Other parts of uterus	19	C54-C55	97	0	0	0	0	0	1	10	23	21	24	18
Ovary	20	C56	230	0	0	0	2	1	7	22	57	55	66	20
Prostate	21	C61	537	0	0	0	0	0	0	5	30	129	229	144
Kidney	22	C64	219	0	2	0	1	3	3	23	38	60	69	20
Bladder	23	C67	199	0	0	0	0	0	4	7	18	45	88	37
Lymph/haematopoietic tissue	24	C81-C96	688	1	2	3	7	17	26	38	96	173	205	120
Other malignant neoplasms			1,201	1	7	4	9	24	44	96	206	277	353	180
<b>Diseases of the blood and blood-forming organs, immunological disorders</b>	<b>25</b>	<b>D50-D89</b>	<b>79</b>	<b>1</b>	<b>2</b>	<b>1</b>	<b>2</b>	<b>3</b>	<b>3</b>	<b>6</b>	<b>6</b>	<b>10</b>	<b>23</b>	<b>22</b>
<b>Endocrine, Nutritional and metabolic diseases</b>	<b>26</b>	<b>E00-E90</b>	<b>654</b>	<b>3</b>	<b>1</b>	<b>3</b>	<b>9</b>	<b>15</b>	<b>15</b>	<b>23</b>	<b>43</b>	<b>119</b>	<b>212</b>	<b>211</b>
Diabetes mellitus	27	E10-E14	471	0	0	0	3	7	7	15	34	86	167	152
<b>Mental and behavioural disorders</b>	<b>28</b>	<b>F00-F99</b>	<b>574</b>	<b>0</b>	<b>0</b>	<b>1</b>	<b>0</b>	<b>2</b>	<b>0</b>	<b>0</b>	<b>8</b>	<b>42</b>	<b>172</b>	<b>349</b>
<b>Diseases of the nervous system and the sense organs</b>	<b>31</b>	<b>G00-H95</b>	<b>1,018</b>	<b>8</b>	<b>5</b>	<b>5</b>	<b>21</b>	<b>23</b>	<b>34</b>	<b>41</b>	<b>101</b>	<b>144</b>	<b>323</b>	<b>313</b>
Meningitis	32	G00-G03	7	2	0	0	0	0	0	2	2	0	1	0
<b>Diseases of the Circulatory System:-</b>	<b>33</b>	<b>I00-I99</b>	<b>9,693</b>	<b>0</b>	<b>0</b>	<b>1</b>	<b>10</b>	<b>46</b>	<b>122</b>	<b>338</b>	<b>760</b>	<b>1,511</b>	<b>3,230</b>	<b>3,675</b>
Ischaemic heart disease	34	I20-I25	5,128	0	0	0	0	12	59	196	500	910	1,671	1,780
of which: (Acute myocardial infarction)		I21	2,523	0	0	0	0	7	26	69	207	420	902	892
Other heart disease	35	I30-I33,I39-I52	1,218	0	0	1	5	14	24	42	78	139	342	573
Cerebrovascular disease	36	I60-I69	2,114	0	0	0	4	11	24	60	103	284	744	884
Other diseases of circulatory system			1,233	0	0	0	1	9	15	40	79	178	473	438



<b>Diseases of the Respiratory system</b>	<b>37</b>	<b>J00-J99</b>	<b>3,694</b>	<b>0</b>	<b>2</b>	<b>1</b>	<b>3</b>	<b>9</b>	<b>16</b>	<b>57</b>	<b>177</b>	<b>487</b>	<b>1,363</b>	<b>1,579</b>
Influenza	38	J10-J11	4	0	0	0	0	1	0	1	0	0	0	2
Pneumonia	39	J12-J19	1,375	0	1	0	0	6	9	16	48	121	404	770
Chronic Lower respiratory disease	40	J40-J47	1,533	0	0	1	3	1	3	17	88	250	669	501
of which: Asthma	41	J45-J46	57	0	0	1	3	1	1	3	5	6	15	22
Other diseases of the respiratory system			782	0	1	0	0	1	4	23	41	116	290	306
<b>Diseases of the Digestive system</b>	<b>42</b>	<b>K00-K93</b>	<b>1,156</b>	<b>1</b>	<b>0</b>	<b>0</b>	<b>1</b>	<b>15</b>	<b>63</b>	<b>136</b>	<b>167</b>	<b>199</b>	<b>305</b>	<b>269</b>
Ulcer of stomach, duodenum and jejunum	43	K25-K28	101	0	0	0	0	0	1	12	13	13	33	29
Chronic liver disease	44	K70,K73-K74	299	0	0	0	0	5	44	82	82	51	30	5
Other diseases of the digestive system			756	1	0	0	1	10	18	42	72	135	242	235
<b>Diseases of the skin and subcutaneous tissue</b>	<b>45</b>	<b>L00-L99</b>	<b>64</b>	<b>0</b>	<b>0</b>	<b>0</b>	<b>0</b>	<b>0</b>	<b>1</b>	<b>0</b>	<b>6</b>	<b>8</b>	<b>24</b>	<b>25</b>
<b>Diseases of the musculoskeletal system/connective tissue</b>	<b>46</b>	<b>M00-M99</b>	<b>212</b>	<b>0</b>	<b>0</b>	<b>0</b>	<b>1</b>	<b>1</b>	<b>3</b>	<b>10</b>	<b>11</b>	<b>33</b>	<b>69</b>	<b>84</b>
Rheumatoid arthritis and osteoarthritis	47	M05-M06,M15-M19	67	0	0	0	0	0	0	2	2	14	23	26
<b>Diseases of the genitourinary system</b>	<b>48</b>	<b>N00-N99</b>	<b>650</b>	<b>0</b>	<b>0</b>	<b>0</b>	<b>1</b>	<b>1</b>	<b>8</b>	<b>6</b>	<b>15</b>	<b>61</b>	<b>225</b>	<b>333</b>
Diseases of the kidney and ureter	49	N00-N29	457	0	0	0	1	1	7	5	12	51	160	220
<b>Complications of pregnancy, childbirth and puerperium</b>	<b>50</b>	<b>O00-O99</b>	<b>3</b>	<b>0</b>	<b>0</b>	<b>0</b>	<b>0</b>	<b>2</b>	<b>1</b>	<b>0</b>	<b>0</b>	<b>0</b>	<b>0</b>	<b>0</b>
<b>Certain conditions originating in the perinatal period<sup>1</sup></b>	<b>51</b>	<b>P00-P96</b>	<b>98</b>	<b>96</b>	<b>1</b>	<b>1</b>	<b>0</b>	<b>0</b>	<b>0</b>	<b>0</b>	<b>0</b>	<b>0</b>	<b>0</b>	<b>0</b>
<b>Congenital malformations and chromosomal abnormalities</b>	<b>52</b>	<b>Q00-Q99</b>	<b>187</b>	<b>104</b>	<b>12</b>	<b>7</b>	<b>13</b>	<b>7</b>	<b>11</b>	<b>15</b>	<b>11</b>	<b>4</b>	<b>2</b>	<b>1</b>
Congenital malformations of the:-														
Nervous system	53	Q00-Q07	35	21	6	3	1	2	0	1	0	1	0	0
Circulatory system	54	Q20-Q28	53	27	0	2	8	1	10	2	2	0	0	1
<b>Symptoms, signs, abnormal findings, ill-defined causes</b>	<b>55</b>	<b>R00-R99</b>	<b>83</b>	<b>22</b>	<b>4</b>	<b>0</b>	<b>1</b>	<b>5</b>	<b>8</b>	<b>6</b>	<b>7</b>	<b>3</b>	<b>8</b>	<b>19</b>
Sudden infant death syndrome	56	R95	22	22	0	0	0	0	0	0	0	0	0	0
Unknown and unspecified causes	57	R96-R99	42	0	4	0	1	5	7	6	5	3	6	5
<b>External causes of injury and poisoning</b>	<b>58</b>	<b>V01-Y89</b>	<b>1,894</b>	<b>1</b>	<b>18</b>	<b>25</b>	<b>244</b>	<b>373</b>	<b>304</b>	<b>244</b>	<b>237</b>	<b>149</b>	<b>166</b>	<b>133</b>
Accidents	59	V01-X59	1,086	1	16	17	121	166	149	126	138	84	141	127
of which: Transport accidents	60	V01-V99	266	1	10	12	71	45	41	22	19	18	21	6
Accidental falls	61	W00-W19	281	0	0	0	2	11	18	24	38	27	85	76
Accidental poisoning	62	X40-X49	316	0	0	0	32	91	65	55	48	13	11	1
other accidents			223	0	6	5	16	19	25	25	33	26	24	44
Suicide and intentional self harm	63	X60-X84	527	0	0	4	90	139	113	78	61	36	6	0
Homicide/assault	64	X85-Y09	49	0	0	2	9	19	8	5	3	2	1	0
Events of undetermined intent	65	Y10-Y34	195	0	1	2	24	46	34	34	28	17	7	2
All other external causes			37	0	1	0	0	3	0	1	7	10	11	4

<sup>1</sup> Stillbirths not included.

Table 2.12 Male deaths registered classified by cause and age group, 2009

Cause of Death	65 COD Code	ICD-10 Code	Total Males	Age Group										
				Under 1	1-4	5-14	15-24	25-34	35-44	45-54	55-64	65-74	75-84	85 and over
<b>Total Male Deaths</b>	<b>0</b>	<b>A00-Y89</b>	<b>15,044</b>	<b>140</b>	<b>37</b>	<b>30</b>	<b>253</b>	<b>427</b>	<b>559</b>	<b>922</b>	<b>1,870</b>	<b>3,107</b>	<b>4,684</b>	<b>3,015</b>
<b>Infectious and parasitic diseases:-</b>	<b>1</b>	<b>A00-B99</b>	<b>124</b>	<b>1</b>	<b>3</b>	<b>1</b>	<b>3</b>	<b>10</b>	<b>8</b>	<b>14</b>	<b>14</b>	<b>21</b>	<b>27</b>	<b>22</b>
Tuberculosis	2	A15-A19,B90	20	0	0	0	0	1	0	0	2	5	7	5
Meningococcal infection	3	A39	5	0	2	1	1	0	0	0	0	1	0	0
AIDS (HIV Disease)	4	B20-B24	12	0	0	0	0	4	2	4	2	0	0	0
Viral Hepatitis	5	B15-B19	17	0	0	0	2	2	4	6	2	1	0	0
Other infectious and parasitic diseases			70	1	1	0	0	3	2	4	8	14	20	17
<b>Neoplasms</b>	<b>6</b>	<b>C00-D48</b>	<b>4,708</b>	<b>3</b>	<b>8</b>	<b>5</b>	<b>13</b>	<b>39</b>	<b>100</b>	<b>315</b>	<b>794</b>	<b>1,343</b>	<b>1,481</b>	<b>607</b>
<b>Malignant Neoplasms of the:-</b>	<b>7</b>	<b>C00-C97</b>	<b>4,617</b>	<b>2</b>	<b>7</b>	<b>5</b>	<b>13</b>	<b>36</b>	<b>99</b>	<b>309</b>	<b>781</b>	<b>1,324</b>	<b>1,451</b>	<b>590</b>
Lip, oral cavity, pharynx	8	C00-C14	96	0	0	0	1	1	2	8	20	34	20	10
Oesophagus	9	C15	231	0	0	0	0	0	7	14	51	69	62	28
Stomach	10	C16	232	0	0	0	1	0	6	19	31	70	76	29
Colon	11	C18	302	0	0	0	0	1	5	21	41	94	91	49
Rectum and anus	12	C19-C21	262	0	0	0	0	4	4	26	43	82	80	23
Liver and the intrahepatic bile ducts	13	C22	151	0	0	0	0	0	1	11	39	41	45	14
Pancreas	14	C25	238	0	0	0	0	0	9	24	48	78	54	25
Larynx and trachea/bronchus /lung	15	C32-C34	1,121	0	0	0	0	1	8	71	239	351	353	98
Skin	16	C43	83	0	0	0	1	2	10	15	14	16	13	12
Breast	17	C50	3	0	0	0	0	0	0	0	1	0	1	1
Cervix uteri	18	C53	0	0	0	0	0	0	0	0	0	0	0	0
Other parts of uterus	19	C54-C55	0	0	0	0	0	0	0	0	0	0	0	0
Ovary	20	C56	0	0	0	0	0	0	0	0	0	0	0	0
Prostate	21	C61	537	0	0	0	0	0	0	5	30	129	229	144
Kidney	22	C64	149	0	1	0	1	2	2	14	29	41	52	7
Bladder	23	C67	143	0	0	0	0	0	3	2	15	33	66	24
Lymph/haematopoietic tissue	24	C81-C96	399	1	0	2	6	11	18	21	59	117	115	49
Other malignant neoplasms			670	1	6	3	3	14	24	58	121	169	194	77
<b>Diseases of the blood and blood-forming organs, immunological disorders</b>	<b>25</b>	<b>D50-D89</b>	<b>35</b>	<b>0</b>	<b>1</b>	<b>1</b>	<b>2</b>	<b>1</b>	<b>1</b>	<b>5</b>	<b>2</b>	<b>6</b>	<b>9</b>	<b>7</b>
<b>Endocrine, Nutritional and metabolic diseases</b>	<b>26</b>	<b>E00-E90</b>	<b>338</b>	<b>2</b>	<b>0</b>	<b>0</b>	<b>2</b>	<b>6</b>	<b>11</b>	<b>16</b>	<b>27</b>	<b>72</b>	<b>110</b>	<b>92</b>
Diabetes mellitus	27	E10-E14	254	0	0	0	0	4	4	12	20	58	90	66
<b>Mental and behavioural disorders</b>	<b>28</b>	<b>F00-F99</b>	<b>203</b>	<b>0</b>	<b>0</b>	<b>0</b>	<b>0</b>	<b>0</b>	<b>0</b>	<b>0</b>	<b>2</b>	<b>25</b>	<b>90</b>	<b>86</b>
<b>Diseases of the nervous system and the sense organs</b>	<b>31</b>	<b>G00-H95</b>	<b>452</b>	<b>5</b>	<b>3</b>	<b>1</b>	<b>13</b>	<b>13</b>	<b>22</b>	<b>22</b>	<b>56</b>	<b>77</b>	<b>147</b>	<b>93</b>
Meningitis	32	G00-G03	7	2	0	0	0	0	0	2	2	0	1	0
<b>Diseases of the Circulatory System:-</b>	<b>33</b>	<b>I00-I99</b>	<b>4,846</b>	<b>0</b>	<b>0</b>	<b>1</b>	<b>6</b>	<b>24</b>	<b>93</b>	<b>252</b>	<b>546</b>	<b>1,029</b>	<b>1,690</b>	<b>1,205</b>
Ischaemic heart disease	34	I20-I25	2,919	0	0	0	0	5	50	164	391	678	966	665
of which: (Acute myocardial infarction)		I21	1,395	0	0	0	0	4	21	55	160	304	505	346
Other heart disease	35	I30-I33,I39-I52	531	0	0	1	3	8	18	32	54	84	162	169
Cerebrovascular disease	36	I60-I69	872	0	0	0	2	6	15	34	53	164	350	248
Other diseases of circulatory system			524	0	0	0	1	5	10	22	48	103	212	123

<b>Diseases of the Respiratory system</b>	<b>37</b>	<b>J00-J99</b>	<b>1,807</b>	<b>0</b>	<b>2</b>	<b>1</b>	<b>1</b>	<b>7</b>	<b>9</b>	<b>26</b>	<b>113</b>	<b>281</b>	<b>754</b>	<b>613</b>
Influenza	38	J10-J11	2	0	0	0	0	1	0	1	0	0	0	0
Pneumonia	39	J12-J19	569	0	1	0	0	5	6	7	32	69	198	251
Chronic Lower respiratory disease of which: <i>Asthma</i>	40 41	J40-J47 J45-J46	802 25	0 0	0 0	1 1	1 1	1 1	1 0	6 2	52 3	137 1	370 8	233 8
Other diseases of the respiratory system			434	0	1	0	0	0	2	12	29	75	186	129
<b>Diseases of the Digestive system</b>	<b>42</b>	<b>K00-K93</b>	<b>596</b>	<b>1</b>	<b>0</b>	<b>0</b>	<b>1</b>	<b>9</b>	<b>47</b>	<b>81</b>	<b>117</b>	<b>113</b>	<b>143</b>	<b>84</b>
Ulcer of stomach, duodenum and jejunum	43	K25-K28	46	0	0	0	0	0	1	6	12	3	14	10
Chronic liver disease	44	K70,K73-K74	196	0	0	0	0	4	31	49	59	34	16	3
Other diseases of the digestive system			354	1	0	0	1	5	15	26	46	76	113	71
<b>Diseases of the skin and subcutaneous tissue</b>	<b>45</b>	<b>L00-L99</b>	<b>26</b>	<b>0</b>	<b>0</b>	<b>0</b>	<b>0</b>	<b>0</b>	<b>1</b>	<b>0</b>	<b>3</b>	<b>3</b>	<b>9</b>	<b>10</b>
<b>Diseases of the musculoskeletal system/connective tissue</b>	<b>46</b>	<b>M00-M99</b>	<b>63</b>	<b>0</b>	<b>0</b>	<b>0</b>	<b>1</b>	<b>0</b>	<b>1</b>	<b>4</b>	<b>5</b>	<b>8</b>	<b>19</b>	<b>25</b>
Rheumatoid arthritis and osteoarthritis	47	M05-M06,M15-M19	15	0	0	0	0	0	0	0	1	3	5	6
<b>Diseases of the genitourinary system</b>	<b>48</b>	<b>N00-N99</b>	<b>269</b>	<b>0</b>	<b>0</b>	<b>0</b>	<b>1</b>	<b>1</b>	<b>1</b>	<b>2</b>	<b>6</b>	<b>34</b>	<b>106</b>	<b>118</b>
Diseases of the kidney and ureter	49	N00-N29	197	0	0	0	1	1	1	1	5	27	79	82
<b>Complications of pregnancy, childbirth and puerperium</b>	<b>50</b>	<b>O00-O99</b>	<b>0</b>	<b>0</b>	<b>0</b>	<b>0</b>	<b>0</b>	<b>0</b>	<b>0</b>	<b>0</b>	<b>0</b>	<b>0</b>	<b>0</b>	<b>0</b>
<b>Certain conditions originating in the perinatal period<sup>1</sup></b>	<b>51</b>	<b>P00-P96</b>	<b>61</b>	<b>60</b>	<b>0</b>	<b>1</b>	<b>0</b>	<b>0</b>	<b>0</b>	<b>0</b>	<b>0</b>	<b>0</b>	<b>0</b>	<b>0</b>
<b>Congenital malformations and chromosomal abnormalities</b>	<b>52</b>	<b>Q00-Q99</b>	<b>97</b>	<b>56</b>	<b>5</b>	<b>3</b>	<b>9</b>	<b>5</b>	<b>4</b>	<b>7</b>	<b>7</b>	<b>1</b>	<b>0</b>	<b>0</b>
Congenital malformations of the:-														
Nervous system	53	Q00-Q07	15	8	2	1	1	2	0	0	0	1	0	0
Circulatory system	54	Q20-Q28	23	12	0	2	4	0	3	1	1	0	0	0
<b>Symptoms, signs.,abnormal findings, ill-defined causes</b>	<b>55</b>	<b>R00-R99</b>	<b>49</b>	<b>12</b>	<b>3</b>	<b>0</b>	<b>0</b>	<b>4</b>	<b>6</b>	<b>5</b>	<b>4</b>	<b>2</b>	<b>5</b>	<b>8</b>
Sudden infant death syndrome	56	R95	12	12	0	0	0	0	0	0	0	0	0	0
Unknown and unspecified causes	57	R96-R99	27	0	3	0	0	4	5	5	2	2	4	2
<b>External causes of injury and poisoning</b>	<b>58</b>	<b>V01-Y89</b>	<b>1,370</b>	<b>0</b>	<b>12</b>	<b>16</b>	<b>201</b>	<b>308</b>	<b>255</b>	<b>173</b>	<b>174</b>	<b>92</b>	<b>94</b>	<b>45</b>
Accidents	59	V01-X59	734	0	11	12	102	137	124	83	97	51	76	41
of which: <i>Transport accidents</i>	60	V01-V99	203	0	8	8	56	41	35	13	13	13	12	4
<i>Accidental falls</i>	61	W00-W19	148	0	0	0	2	7	16	20	25	13	40	25
<i>Accidental poisoning</i>	62	X40-X49	236	0	0	0	29	76	55	31	31	8	6	0
<i>other accidents</i>			147	0	3	4	15	13	18	19	28	17	18	12
Suicide and intentional self harm	63	X60-X84	422	0	0	3	70	112	96	62	48	26	5	0
Homicide/assault	64	X85-Y09	40	0	0	0	9	17	6	3	2	2	1	0
Events of undetermined intent	65	Y10-Y34	151	0	1	1	20	39	29	25	23	7	5	1
All other external causes			23	0	0	0	0	3	0	0	4	6	7	3

<sup>1</sup> Stillbirths not included.

**Table 2.13 Female deaths registered classified by cause and age group, 2009**

Cause of Death	65 COD Code	ICD-10 Code	Total Females	Age Group										
				Under 1	1-4	5-14	15-24	25-34	35-44	45-54	55-64	65-74	75-84	85 and over
<b>Total Female Deaths</b>	<b>0</b>	<b>A00-Y89</b>	<b>13,854</b>	<b>100</b>	<b>29</b>	<b>25</b>	<b>81</b>	<b>162</b>	<b>275</b>	<b>607</b>	<b>1,149</b>	<b>1,902</b>	<b>4,191</b>	<b>5,333</b>
<b>Infectious and parasitic diseases:-</b>	<b>1</b>	<b>A00-B99</b>	<b>130</b>	<b>0</b>	<b>4</b>	<b>0</b>	<b>2</b>	<b>8</b>	<b>5</b>	<b>3</b>	<b>7</b>	<b>17</b>	<b>44</b>	<b>40</b>
Tuberculosis	2	A15-A19,B90	16	0	0	0	0	1	0	0	1	4	6	4
Meningococcal infection	3	A39	3	0	1	0	0	0	0	0	0	0	2	0
AIDS (HIV Disease)	4	B20-B24	4	0	0	0	0	2	2	0	0	0	0	0
Viral Hepatitis	5	B15-B19	1	0	0	0	0	1	0	0	0	0	0	0
Other infectious and parasitic diseases			106	0	3	0	2	4	3	3	6	13	36	36
<b>Neoplasms</b>	<b>6</b>	<b>C00-D48</b>	<b>3,877</b>	<b>0</b>	<b>6</b>	<b>4</b>	<b>10</b>	<b>30</b>	<b>132</b>	<b>315</b>	<b>655</b>	<b>858</b>	<b>1,201</b>	<b>666</b>
<b>Malignant Neoplasms of the:-</b>	<b>7</b>	<b>C00-C97</b>	<b>3,779</b>	<b>0</b>	<b>4</b>	<b>3</b>	<b>10</b>	<b>29</b>	<b>130</b>	<b>312</b>	<b>650</b>	<b>843</b>	<b>1,164</b>	<b>634</b>
Lip, oral cavity, pharynx	8	C00-C14	31	0	0	0	0	0	0	4	4	5	14	4
Oesophagus	9	C15	119	0	0	0	0	0	0	6	15	28	41	29
Stomach	10	C16	125	0	0	0	0	1	4	4	20	26	40	30
Colon	11	C18	240	0	0	0	0	1	4	13	27	38	86	71
Rectum and anus	12	C19-C21	141	0	0	0	0	1	4	10	20	31	47	28
Liver and the intrahepatic bile ducts	13	C22	95	0	0	0	0	0	2	4	12	23	34	20
Pancreas	14	C25	245	0	0	0	0	0	4	12	36	64	89	40
Larynx and trachea/bronchus /lung	15	C32-C34	698	0	0	1	0	1	11	39	146	175	258	67
Skin	16	C43	43	0	0	0	1	0	6	1	5	10	8	12
Breast	17	C50	676	0	0	0	0	3	39	101	131	154	158	90
Cervix uteri	18	C53	93	0	0	0	0	4	18	17	20	18	11	5
Other parts of uterus	19	C54-C55	97	0	0	0	0	0	1	10	23	21	24	18
Ovary	20	C56	230	0	0	0	2	1	7	22	57	55	66	20
Prostate	21	C61	0	0	0	0	0	0	0	0	0	0	0	0
Kidney	22	C64	70	0	1	0	0	1	1	9	9	19	17	13
Bladder	23	C67	56	0	0	0	0	0	1	5	3	12	22	13
Lymph/haematopoietic tissue	24	C81-C96	289	0	2	1	1	6	8	17	37	56	90	71
Other malignant neoplasms			531	0	1	1	6	10	20	38	85	108	159	103
<b>Diseases of the blood and blood-forming organs, immunological disorders</b>	<b>25</b>	<b>D50-D89</b>	<b>44</b>	<b>1</b>	<b>1</b>	<b>0</b>	<b>0</b>	<b>2</b>	<b>2</b>	<b>1</b>	<b>4</b>	<b>4</b>	<b>14</b>	<b>15</b>
<b>Endocrine, Nutritional and metabolic diseases</b>	<b>26</b>	<b>E00-E90</b>	<b>316</b>	<b>1</b>	<b>1</b>	<b>3</b>	<b>7</b>	<b>9</b>	<b>4</b>	<b>7</b>	<b>16</b>	<b>47</b>	<b>102</b>	<b>119</b>
Diabetes mellitus	27	E10-E14	217	0	0	0	3	3	3	3	14	28	77	86
<b>Mental and behavioural disorders</b>	<b>28</b>	<b>F00-F99</b>	<b>371</b>	<b>0</b>	<b>0</b>	<b>1</b>	<b>0</b>	<b>2</b>	<b>0</b>	<b>0</b>	<b>6</b>	<b>17</b>	<b>82</b>	<b>263</b>
<b>Diseases of the nervous system and the sense organs</b>	<b>31</b>	<b>G00-H95</b>	<b>566</b>	<b>3</b>	<b>2</b>	<b>4</b>	<b>8</b>	<b>10</b>	<b>12</b>	<b>19</b>	<b>45</b>	<b>67</b>	<b>176</b>	<b>220</b>
Meningitis	32	G00-G03	0	0	0	0	0	0	0	0	0	0	0	0
<b>Diseases of the Circulatory System:-</b>	<b>33</b>	<b>I00-I99</b>	<b>4,847</b>	<b>0</b>	<b>0</b>	<b>0</b>	<b>4</b>	<b>22</b>	<b>29</b>	<b>86</b>	<b>214</b>	<b>482</b>	<b>1,540</b>	<b>2,470</b>
Ischaemic heart disease	34	I20-I25	2,209	0	0	0	0	7	9	32	109	232	705	1,115
of which: (Acute myocardial infarction)		I21	1,128	0	0	0	0	3	5	14	47	116	397	546
Other heart disease	35	I30-I33,I39-I52	687	0	0	0	2	6	6	10	24	55	180	404
Cerebrovascular disease	36	I60-I69	1,242	0	0	0	2	5	9	26	50	120	394	636
Other diseases of circulatory system			709	0	0	0	0	4	5	18	31	75	261	315

<b>Diseases of the Respiratory system</b>	<b>37</b>	<b>J00-J99</b>	<b>1,887</b>	<b>0</b>	<b>0</b>	<b>0</b>	<b>2</b>	<b>2</b>	<b>7</b>	<b>31</b>	<b>64</b>	<b>206</b>	<b>609</b>	<b>966</b>
Influenza	38	J10-J11	2	0	0	0	0	0	0	0	0	0	0	2
Pneumonia	39	J12-J19	806	0	0	0	0	1	3	9	16	52	206	519
Chronic Lower respiratory disease <i>of which: Asthma</i>	40 41	J40-J47 J45-J46	731 32	0 0	0 0	0 0	2 2	0 0	2 1	11 1	36 2	113 5	299 7	268 14
Other diseases of the respiratory system			348	0	0	0	0	1	2	11	12	41	104	177
<b>Diseases of the Digestive system</b>	<b>42</b>	<b>K00-K93</b>	<b>560</b>	<b>0</b>	<b>0</b>	<b>0</b>	<b>0</b>	<b>6</b>	<b>16</b>	<b>55</b>	<b>50</b>	<b>86</b>	<b>162</b>	<b>185</b>
Ulcer of stomach, duodenum and jejunum	43	K25-K28	55	0	0	0	0	0	0	6	1	10	19	19
Chronic liver disease	44	K70,K73-K74	103	0	0	0	0	1	13	33	23	17	14	2
Other diseases of the digestive system			402	0	0	0	0	5	3	16	26	59	129	164
<b>Diseases of the skin and subcutaneous tissue</b>	<b>45</b>	<b>L00-L99</b>	<b>38</b>	<b>0</b>	<b>0</b>	<b>0</b>	<b>0</b>	<b>0</b>	<b>0</b>	<b>0</b>	<b>3</b>	<b>5</b>	<b>15</b>	<b>15</b>
<b>Diseases of the musculoskeletal system/connective tissue</b>	<b>46</b>	<b>M00-M99</b>	<b>149</b>	<b>0</b>	<b>0</b>	<b>0</b>	<b>0</b>	<b>1</b>	<b>2</b>	<b>6</b>	<b>6</b>	<b>25</b>	<b>50</b>	<b>59</b>
Rheumatoid arthritis and osteoarthritis	47	M05-M06,M15-M19	52	0	0	0	0	0	0	2	1	11	18	20
<b>Diseases of the genitourinary system</b>	<b>48</b>	<b>N00-N99</b>	<b>381</b>	<b>0</b>	<b>0</b>	<b>0</b>	<b>0</b>	<b>0</b>	<b>7</b>	<b>4</b>	<b>9</b>	<b>27</b>	<b>119</b>	<b>215</b>
Diseases of the kidney and ureter	49	N00-N29	260	0	0	0	0	0	6	4	7	24	81	138
<b>Complications of pregnancy, childbirth and puerperium</b>	<b>50</b>	<b>O00-O99</b>	<b>3</b>	<b>0</b>	<b>0</b>	<b>0</b>	<b>0</b>	<b>2</b>	<b>1</b>	<b>0</b>	<b>0</b>	<b>0</b>	<b>0</b>	<b>0</b>
<b>Certain conditions originating in the perinatal period<sup>1</sup></b>	<b>51</b>	<b>P00-P96</b>	<b>37</b>	<b>36</b>	<b>1</b>	<b>0</b>	<b>0</b>	<b>0</b>	<b>0</b>	<b>0</b>	<b>0</b>	<b>0</b>	<b>0</b>	<b>0</b>
<b>Congenital malformations and chromosomal abnormalities</b>	<b>52</b>	<b>Q00-Q99</b>	<b>90</b>	<b>48</b>	<b>7</b>	<b>4</b>	<b>4</b>	<b>2</b>	<b>7</b>	<b>8</b>	<b>4</b>	<b>3</b>	<b>2</b>	<b>1</b>
Congenital malformations of the:-														
Nervous system	53	Q00-Q07	20	13	4	2	0	0	0	1	0	0	0	0
Circulatory system	54	Q20-Q28	30	15	0	0	4	1	7	1	1	0	0	1
<b>Symptoms, signs, abnormal findings, ill-defined causes</b>	<b>55</b>	<b>R00-R99</b>	<b>34</b>	<b>10</b>	<b>1</b>	<b>0</b>	<b>1</b>	<b>1</b>	<b>2</b>	<b>1</b>	<b>3</b>	<b>1</b>	<b>3</b>	<b>11</b>
Sudden infant death syndrome	56	R95	10	10	0	0	0	0	0	0	0	0	0	0
Unknown and unspecified causes	57	R96-R99	15	0	1	0	1	1	2	1	3	1	2	3
<b>External causes of injury and poisoning</b>	<b>58</b>	<b>V01-Y89</b>	<b>524</b>	<b>1</b>	<b>6</b>	<b>9</b>	<b>43</b>	<b>65</b>	<b>49</b>	<b>71</b>	<b>63</b>	<b>57</b>	<b>72</b>	<b>88</b>
Accidents	59	V01-X59	352	1	5	5	19	29	25	43	41	33	65	86
<i>of which: Transport accidents</i>	60	V01-V99	63	1	2	4	15	4	6	9	6	5	9	2
<i>Accidental falls</i>	61	W00-W19	133	0	0	0	0	4	2	4	13	14	45	51
<i>Accidental poisoning</i>	62	X40-X49	80	0	0	0	3	15	10	24	17	5	5	1
<i>other accidents</i>			76	-	3	1	1	6	7	6	5	9	6	32
Suicide and intentional self harm	63	X60-X84	105	0	0	1	20	27	17	16	13	10	1	0
Homicide/assault	64	X85-Y09	9	0	0	2	0	2	2	2	1	0	0	0
Events of undetermined intent	65	Y10-Y34	44	0	0	1	4	7	5	9	5	10	2	1
All other external causes			14	0	1	0	0	0	0	1	3	4	4	1

<sup>1</sup> Stillbirths not included.

**Table 2.14 Infant and neonatal mortality by area of residence of deceased, 2009**

Area of residence	Infant mortality		Neonatal mortality	
	Number	Rate	Number	Rate
<b>STATE</b>	<b>240</b>	<b>3.2</b>	<b>169</b>	<b>2.3</b>
<b>LEINSTER</b>	<b>129</b>	<b>3.1</b>	<b>90</b>	<b>2.2</b>
Carlow	3	3.1	3	3.1
Dublin City	25	3.2	20	2.6
South Dublin	12	2.7	7	1.5
Fingal	14	2.6	7	1.3
Dun Laoghaire Rathdown	9	3.2	6	2.1
Kildare	13	3.3	8	2.0
Kilkenny	4	2.9	4	2.9
Laois	5	3.7	4	2.9
Longford	2	2.8	0	0.0
Louth	4	2.2	1	0.5
Meath	10	2.9	8	2.3
Offaly	4	3.3	4	3.3
Westmeath	5	3.6	3	2.2
Wexford	10	4.2	7	2.9
Wicklow	9	3.7	8	3.3
<b>MUNSTER</b>	<b>77</b>	<b>3.8</b>	<b>52</b>	<b>2.6</b>
Clare	13	6.9	10	5.3
Cork City	6	3.5	3	1.7
Cork County	18	2.7	11	1.6
Kerry	8	3.7	6	2.8
Limerick City	2	2.3	0	0.0
Limerick County	10	4.4	9	4.0
North Tipperary	5	4.1	4	3.3
South Tipperary	8	6.0	4	3.0
Waterford City	4	4.7	4	4.7
Waterford County	3	2.9	1	1.0
<b>CONNACHT</b>	<b>22</b>	<b>2.7</b>	<b>16</b>	<b>2.0</b>
Galway City	2	1.9	2	1.9
Galway County	11	3.8	9	3.1
Leitrim	0	0.0	0	0.0
Mayo	7	3.8	4	2.2
Roscommon	2	2.2	1	1.1
Sligo	0	0.0	0	0.0
<b>ULSTER (PART OF)</b>	<b>12</b>	<b>2.8</b>	<b>11</b>	<b>2.6</b>
Cavan	2	1.7	2	1.7
Donegal	9	3.9	8	3.5
Monaghan	1	1.3	1	1.3
<b>REGIONAL AUTHORITIES:</b>				
Border	16	2.1	12	1.6
Midland	16	3.4	11	2.3
West	22	3.3	16	2.4
Dublin	60	2.9	40	1.9
Mid-East	32	3.2	24	2.4
Mid-West	30	4.8	23	3.7
South-East	32	4.0	23	2.9
South-West	32	3.0	20	1.9

Infant mortality rates: Deaths of infants under one year per 1,000 live births, classified by area of residence of mother.

Neonatal mortality rates: Deaths of infants under 28 days per 1,000 live births, classified by area of residence of mother.

Infant and neonatal mortality rates in some areas, based on small numbers are subject to considerable fluctuation and caution should be exercised in their interpretation.

**Table 2.15 Divorce, Judicial Separation and Nullity applications received and granted by the courts in year ending December 2009**

Circuit Court	County	Divorce Applications		Judicial Separation Applications		Nullity Applications	
		Received	Granted	Received	Granted	Received	Granted
<b>TOTAL</b>		<b>3,716</b>	<b>3,341</b>	<b>1,627</b>	<b>1,100</b>	<b>55</b>	<b>20</b>
<b>Leinster</b>		<b>2,209</b>	<b>1,880</b>	<b>940</b>	<b>592</b>	<b>26</b>	<b>4</b>
Carlow	Carlow	48	60	18	13	-	-
Dublin	Dublin	1,257	1,113	548	388	21	2
Naas	Kildare	109	123	52	29	1	-
Kilkenny	Kilkenny	40	40	21	32	1	-
Portlaoise	Laois	38	42	8	4	-	-
Longford	Longford	33	22	9	6	-	-
Dundalk	Louth	108	124	48	51	-	1
Trim	Meath	216	77	133	23	-	-
Tullamore	Offaly	49	53	17	20	-	-
Mullingar	Westmeath	86	66	17	9	1	1
Wexford	Wexford	117	139	33	10	-	-
Wicklow	Wicklow	108	21	36	7	2	-
<b>Munster</b>		<b>944</b>	<b>1,003</b>	<b>415</b>	<b>309</b>	<b>19</b>	<b>11</b>
Ennis	Clare	61	70	21	29	3	-
Cork	Cork	406	393	193	106	9	7
Tralee	Kerry	96	110	38	27	3	1
Limerick	Limerick	146	171	54	40	3	2
Clonmel	Tipperary	102	96	59	27	-	1
Waterford	Waterford	133	163	50	80	1	-
<b>Connacht</b>		<b>340</b>	<b>360</b>	<b>150</b>	<b>153</b>	<b>6</b>	<b>3</b>
Galway	Galway	170	198	87	98	3	3
Carrick on Shannon	Leitrim	21	19	10	2	-	-
Castlebar	Mayo	77	72	26	28	3	-
Roscommon	Roscommon	31	29	17	15	-	-
Sligo	Sligo	41	42	10	10	-	-
<b>Ulster</b>		<b>190</b>	<b>59</b>	<b>87</b>	<b>26</b>	<b>4</b>	<b>1</b>
Cavan	Cavan	47	33	22	15	1	1
Letterkenny	Donegal	96	17	44	4	2	-
Monaghan	Monaghan	47	9	21	7	1	-
<b>Total Circuit Court</b>		<b>3,683</b>	<b>3,302</b>	<b>1,592</b>	<b>1,080</b>	<b>55</b>	<b>19</b>
High Court		33	39	35	20	-	1
Supreme Court		-	-	-	-	-	-

Source: Courts Service





## **Appendix**

## Glossary of terms

### **NUTS III Regional Authority areas**

Border, Midland, West, Dublin, Mid-East, Mid-West, South-East, South-West

Border: Cavan, Donegal, Leitrim, Louth, Monaghan, Sligo.

Midland: Laois, Longford, Offaly, Westmeath.

West: Galway City, Galway County, Mayo, Roscommon.

Dublin: Dublin City, South Dublin, Fingal, Dun Laoghaire-Rathdown.

Mid-East: Kildare, Meath, Wicklow.

Mid-West: Clare, Limerick City, Limerick County, North Tipperary.

South-East: Carlow, Kilkenny, South Tipperary, Waterford City, Waterford County, Wexford.

South-West: Cork City, Cork County, Kerry.

## Causes of death Eurostat shortlist (August 1998)

Nr	Disease or external cause	ICD-9 Code	ICD-10 Code
00	All causes of death	001-E999	A00-Y89
01	Infectious and Parasitic Diseases:-	001-139,279.8	A00-B99
02	Tuberculosis	010-018,137	A15-A19,B90
03	Meningococcal Infection	036	A39
04	AIDS (HIV Disease)	042-044,279.8	B20-B24
05	Viral Hepatitis	070	B15-B19
	other Infectious and Parasitic Diseases	Rem (001-139)	Rem (A00-B99)
06	Neoplasms	140-239	C00-D48
07	Malignant Neoplasms of the:-	140-208	C00-C97
08	Lip, Oral Cavity, Pharynx	140-149	C00-C14
09	Oesophagus	150	C15
10	Stomach	151	C16
11	Colon	153	C18
12	Rectum and Anus	154	C19-C20-C21
13	Liver and the Intrahepatic Bile Ducts	155	C22
14	Pancreas	157	C25
15	Larynx and Trachea/Bronchus/Lung	161-162	C32-C34
16	Skin	172	C43
17	Breast	174-175	C50
18	Cervix Uteri	180	C53
19	Other Parts of the Uterus	179,182	C54-C55
20	Ovary	183.0	C56
21	Prostate	185	C61
22	Kidney	189.0	C64
23	Bladder	188	C67
24	Lymph/Haematopoietic Tissue	200-208	C81-C96
	other Malignant Neoplasms	Rem (140-208)	Rem. (C00-C97)
25	Diseases of the Blood and Blood-forming Organs, Immunological disorders <sup>1</sup>	279-289	D50-D89
26	Endocrine, Nutritional and Metabolic Diseases	240-278	E00-E90
27	Diabetes Mellitus	250	E10-E14
28	Mental and Behavioural Disorders	290-319	F00-F99
29	Alcohol abuse (including Alcoholic Psychosis)	291,303	F10
30	Drug Dependence, Toxicomania	304-305	F11-F16,F18-F19
31	Diseases of the Nervous System and the Sense Organs	320-389	G00-H95
32	Meningitis	320-322	G00-G03
33	Diseases of the Circulatory System:-	390-459	I00-I99
34	Ischaemic Heart Disease	410-414	I20-I25
	<i>(Acute Myocardial Infarction)</i>	410	I21
35	Other Heart Disease	420-423,425-429	I30-I33,I39-I52
36	Cerebrovascular Disease	430-438	I60-I69
	other Diseases of the Circulatory System	Rem (390-459)	Rem. (I00-I99)
37	Diseases of the Respiratory System	460-519	J00-J99
38	Influenza	487	J10-J11
39	Pneumonia	480-486	J12-J18
40	Chronic Lower Respiratory Disease	490-494,496	J40-J47
41	Asthma	493	J45-J46
	other Diseases of the Respiratory System	Rem (460-519)	Rem. (J00-J99)
42	Diseases of the Digestive System	520-579	K00-K93
43	Ulcer of Stomach, Duodenum and Jejunum	531-534	K25-K28
44	Chronic Liver Disease	571.0-571.9	K70,K73-K74
	other Diseases of the Digestive System	Rem (520-579)	Rem. (K00-K93)
45	Diseases of the Skin and Subcutaneous Tissue	680-709	L00-L99
46	Diseases of the Musculoskeletal System/Connective Tissue	710-739	M00-M99
47	Rheumatoid Arthritis and Osteoarthritis	714-715	M05-M06,M15-M19
48	Diseases of the Genitourinary System	580-629	N00-N99
49	Diseases of the Kidney and Ureter	580-594	N00-N29
50	Complications of Pregnancy, Childbirth and Puerperium	630-676	O00-O99
51	Certain Conditions Originating in the Perinatal Period (stillbirths not included)	760-779	P00-P96
52	Congenital Malformations and Chromosomal Abnormalities	740-759	Q00-Q99
53	Congenital malformations of the Nervous System	740-742	Q00-Q07
54	Congenital malformations of the Circulatory System	745-747	Q20-Q28
55	Symptoms, Signs, Abnormal Findings, Ill-defined Causes	780-799	R00-R99
56	Sudden Infant Death Syndrome	798.0	R95
57	Unknown and Unspecified Causes	798.1-9,799	R96-R99
	Injury and Poisoning	800-999	S00-T98
58	External Causes of Injury and Poisoning (included in the Foregoing)	E800-E999	V01-Y89
59	Accidents	E800-E929	V01-X59
60	Transport Accidents	E800-E848	V01-V99
	Road transport Accidents	E810-E829, E929.0	V01-V80,V87,V89,Y85
	Motor vehicle transport Accidents	E810-E819	
61	Accidental Falls	E880-E888	W00-W19
62	Accidental Poisoning	E850-E869	X40-X49
	other accidents	Rem (E800-E929)	Rem (V01-X59)
63	Suicide and Intentional Self Harm	E950-E959	X60-X84
64	Homicide/Assault	E960-E969	X85-Y09
65	Cause Undetermined	E980-E989	Y10-Y34
	other External Causes	Rem (E930-E999)	

<sup>1</sup> 279.8 not included

**Table 1 Estimated Population classified by Sex and Age Group, 2004 - 2009***thousands*

Sex and Age Group	Persons in April of each year					
	2004	2005	2006 <sup>1</sup>	2007 <sup>2</sup>	2008 <sup>2</sup>	2009 <sup>2</sup>
<b>Total Persons</b>	<b>4,045.2</b>	<b>4,133.8</b>	<b>4,239.8</b>	<b>4,339.0</b>	<b>4,422.1</b>	<b>4,459.3</b>
0 - 4 years	290.7	296.5	302.3	312.3	327.9	341.6
5 - 9 "	274.9	280.6	288.3	295.9	303.4	308.0
10 - 14 "	278.2	276.3	273.9	275.6	281.0	288.1
15 - 19 "	298.4	292.8	290.3	286.0	283.9	278.6
20 - 24 "	336.1	339.5	342.5	347.8	334.0	304.8
25 - 29 "	325.4	345.2	373.1	405.1	416.7	413.4
30 - 34 "	325.1	335.8	349.4	358.0	366.9	371.4
35 - 39 "	303.5	312.1	322.1	331.7	342.1	348.0
40 - 44 "	286.0	294.1	301.3	305.8	310.2	312.5
45 - 49 "	259.2	265.4	274.7	279.8	286.1	293.5
50 - 54 "	238.1	243.1	247.1	252.6	257.2	261.7
55 - 59 "	213.9	221.4	225.3	227.4	232.0	235.4
60 - 64 "	166.0	172.1	181.7	190.5	199.2	207.5
65 - 69 "	137.5	140.8	143.4	143.5	148.8	155.3
70 - 74 "	115.7	117.4	119.2	119.2	120.8	123.2
75 - 79 "	90.0	91.0	92.5	92.1	93.6	95.2
80 - 84 "	63.1	64.0	64.9	65.4	65.2	65.9
85 years and over	43.4	45.7	48.0	50.3	53.2	55.4
<b>Total males</b>	<b>2,011.9</b>	<b>2,061.8</b>	<b>2,121.2</b>	<b>2,171.1</b>	<b>2,206.3</b>	<b>2,217.7</b>
0 - 4 years	148.7	151.7	154.6	160.5	168.2	175.3
5 - 9 "	141.2	144.3	148.0	151.3	154.9	157.6
10 - 14 "	142.8	142.0	140.5	141.3	144.1	147.7
15 - 19 "	152.7	149.8	148.2	145.4	144.6	141.8
20 - 24 "	168.2	170.0	172.8	175.0	165.7	148.6
25 - 29 "	162.9	174.1	189.3	204.7	209.4	204.6
30 - 34 "	161.8	168.7	177.5	182.6	185.3	186.0
35 - 39 "	152.4	157.8	163.8	169.1	174.0	175.6
40 - 44 "	142.5	147.1	151.4	153.6	155.7	157.5
45 - 49 "	129.7	132.9	138.0	140.6	143.4	147.0
50 - 54 "	120.1	122.9	124.6	127.1	129.2	131.5
55 - 59 "	108.5	112.0	113.9	114.9	117.0	118.5
60 - 64 "	83.8	86.7	91.6	96.0	100.4	104.3
65 - 69 "	67.3	69.1	70.9	71.3	73.6	76.9
70 - 74 "	54.6	55.7	56.5	56.6	57.5	58.7
75 - 79 "	37.8	38.8	40.1	40.6	41.8	42.9
80 - 84 "	23.9	24.3	24.7	25.0	25.0	25.9
85 years and over	13.2	14.0	14.8	15.5	16.6	17.5
<b>Total females</b>	<b>2,033.3</b>	<b>2,072.0</b>	<b>2,118.7</b>	<b>2,167.9</b>	<b>2,215.8</b>	<b>2,241.6</b>
0 - 4 years	142.0	144.8	147.7	151.8	159.7	166.4
5 - 9 "	133.8	136.3	140.3	144.6	148.5	150.5
10 - 14 "	135.4	134.4	133.4	134.2	136.9	140.4
15 - 19 "	145.7	143.0	142.0	140.6	139.3	136.8
20 - 24 "	167.9	169.5	169.7	172.8	168.3	156.1
25 - 29 "	162.5	171.1	183.8	200.4	207.3	208.8
30 - 34 "	163.4	167.0	171.9	175.3	181.6	185.4
35 - 39 "	151.1	154.4	158.3	162.5	168.1	172.4
40 - 44 "	143.5	147.1	149.9	152.2	154.5	155.0
45 - 49 "	129.6	132.6	136.8	139.3	142.8	146.5
50 - 54 "	118.0	120.2	122.5	125.5	128.0	130.2
55 - 59 "	105.4	109.4	111.4	112.5	115.0	116.9
60 - 64 "	82.2	85.4	90.2	94.6	98.8	103.2
65 - 69 "	70.2	71.7	72.5	72.2	75.2	78.4
70 - 74 "	61.1	61.7	62.6	62.6	63.3	64.5
75 - 79 "	52.2	52.2	52.3	51.5	51.8	52.4
80 - 84 "	39.2	39.7	40.2	40.4	40.1	40.0
85 years and over	30.2	31.7	33.2	34.8	36.6	37.9

<sup>1</sup> De Facto<sup>2</sup> Preliminary

**Table 2 - Deaths which were registered on the authority of the Superintendent Registrars in 2009, classified by principal groups of causes, sex and year of occurrence**

Cause of Death		Year of occurrence										Total	
		2006	2005	2004	2003	2002	2001	2000	1999	1998	1997		1995 & earlier
<b>Total deaths</b>	<b>M</b>	<b>189</b>	<b>50</b>	<b>34</b>	<b>9</b>	<b>8</b>	<b>3</b>	<b>5</b>	<b>1</b>	<b>7</b>	<b>0</b>	<b>74</b>	<b>380</b>
	<b>F</b>	<b>125</b>	<b>34</b>	<b>23</b>	<b>10</b>	<b>14</b>	<b>11</b>	<b>10</b>	<b>5</b>	<b>6</b>	<b>2</b>	<b>68</b>	<b>308</b>
Malignant Neoplasms	M	11	4	2	1	2	-	-	-	2	-	12	34
	F	15	6	3	1	1	1	1	1	-	1	11	41
Diseases of the Circulatory system	M	29	12	10	3	1	1	1	-	2	-	30	89
	F	25	6	6	6	11	5	4	2	3	-	33	101
Diseases of the Respiratory system	M	7	2	2	2	2	-	1	-	1	-	9	26
	F	6	2	2	1	1	2	3	-	1	1	3	22
External causes	M	114	28	18	2	2	1	2	1	-	-	5	173
	F	43	8	8	2	1	3	1	-	-	-	1	67
All other causes	M	28	4	2	1	1	1	1	-	2	-	18	58
	F	36	12	4	-	-	-	1	2	2	-	20	77