



Central Statistics Office
An Phríomh-Oifig Staidrimh

Vital Statistics

Second Quarter

2009

Published by the Stationery Office, Dublin, Ireland.

To be purchased from the:

Central Statistics Office, Information Section, Skehard Road, Cork,

Government Publications Sales Office, Sun Alliance House,
Molesworth Street, Dublin 2,

or through any bookseller.

Compiled by the Central Statistics Office on behalf of the Department of
Health and Children.

[No. 581]

Price €6.00

January 2010

© Government of Ireland 2010

Material compiled and presented by
Central Statistics Office.

Reproduction is authorised, except for commercial
purposes, provided the source is acknowledged.

ISSN 0790-7710

ISBN 978-1-4064-2354-9

Contents

Second Quarter 2009

	Page
Commentary	4
Tables	
Table 1	Marriages, births, deaths and natural increase 8
Table 2	Annual marriage, birth, death and natural increase rates per 1,000 population 9
Table 3	Births registered, classified by area of residence of mother 10
Table 4	Births registered, classified by age of mother and previous number of liveborn children 11
Table 5	Number and percentage of births within and outside marriage, classified by age of mother 12
Table 6	Number and percentage of births registered within and outside marriage, classified by area of residence of mother 13
Table 7	Births registered, classified by area of residence and age of mother 14
Table 8	Births registered outside marriage, classified by area of residence and age of mother 15
Table 9	Deaths registered by county of residence of deceased 16
Table 10	Deaths registered by cause of death and county of residence of deceased 17
Table 11	Deaths registered classified by cause and age group 18
Table 12	Male deaths registered, classified by cause and age group 20
Table 13	Female deaths registered classified by cause and age group 22
Table 14	Infant and neonatal mortality by area of residence of deceased 24
Appendix	
	Glossary of terms 26
	Causes of death Eurostat shortlist (August 1998) 27
	Estimated population classified by sex and age group, 2004-2009 28

Second Quarter 2009

Commentary

Fig. 1 Annual birth, death and marriage rates per 1,000 population

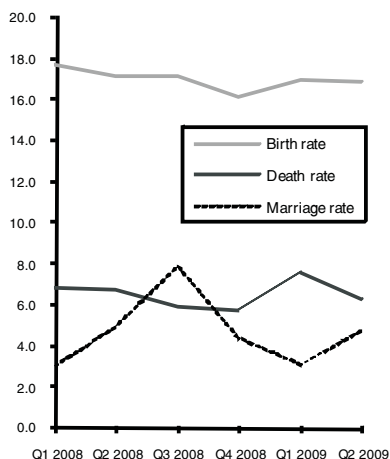


Fig. 2 Birth Order Q2 2009

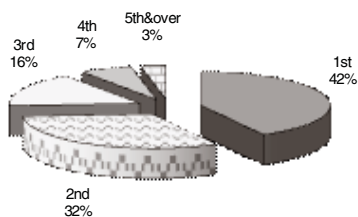
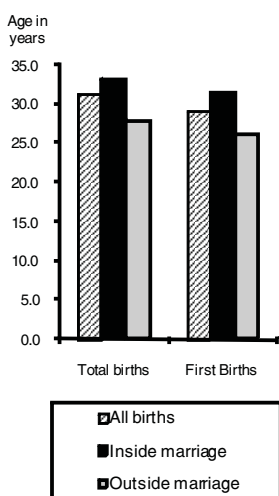


Fig. 3 Average age at maternity Q2 2009



Introduction

This report has been prepared by the Central Statistics Office for the Minister for Health and Children in accordance with the provisions of Section 2 of the Vital Statistics and Births, Deaths and Marriages Registration Act, 1952 and Section 73 of the Civil Registration Act 2004.

Births

There were 18,844 births registered in quarter 2 of 2009, 9,588 males and 9,256 females, a decrease of 196 on the quarter 2 figure of 2008. The quarter 2 2009 total is 36.6% higher than in 2000 when 13,794 babies were registered. See tables 1 and 3.

The 18,844 births represent an annual birth rate of 16.9 per 1,000 of the population, 0.3 below quarter 2 of 2008. This rate is 2.3 per 1,000 population higher than in 2000. See table 2 and fig. 1.

Birth order

A total of 7,858 births (42.0%) were to first time mothers in quarter 2 of 2009. This compares to 5,427 (39.5%) first births registered in quarter 2 2000. Second time mothers had 6,011 births (32.1%). See table 4 and fig. 2.

Age of mothers

The average age of mothers for births registered in quarter 2 2009 was 31.3 years, an increase of 0.1 on quarter 2 2008, and 1 year more than in quarter 2 2000. The average age of mothers having their first child in quarter 2 2009 was 29.1 years. See tables 1, 7 and fig. 3.

Births outside marriage

There were 6,114 births registered as outside marriage in quarter 2 of 2009. This accounted for 32.4% of all births, the same as quarter 2 2008. The highest percentage of births outside marriage occurred in Limerick City at 53%, while the lowest percentage was in Leitrim at 19%. In quarter 2 2000, 4,260 births were registered outside marriage or 30.9% of all births. See tables 1 and 6.

Deaths

There were 7,020 deaths registered in quarter 2 2009, 3,647 males and 3,373 females. This represents an annual death rate of 6.3 per 1,000 population. The quarter 2 2009 total is almost 7.3% lower than in 2008 when 7,569 deaths were registered. See tables 1, 9 and fig. 1.

Age at death

There were 52 infant deaths registered in quarter 2 2009 giving an infant mortality rate of 2.8 deaths per 1,000 live births. Neonatal deaths are deaths of infants at ages under 4 weeks. There were 41 neonatal deaths registered in quarter 2 2009, a neonatal mortality rate of 2.2 deaths per 1,000 live births. See tables 1, 2 and fig. 4.

Fig. 4 Infant and neonatal mortality rates per 1,000 live births

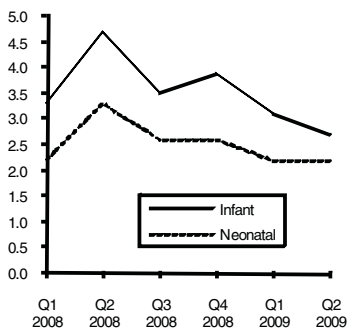


Fig. 5 Death rates for ages 65 & over per 1,000 relevant population

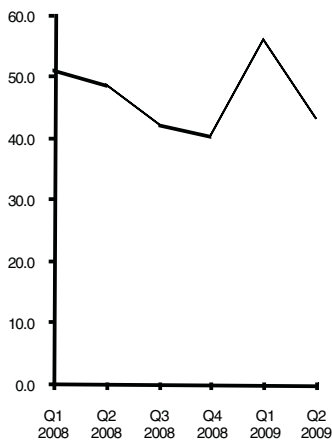
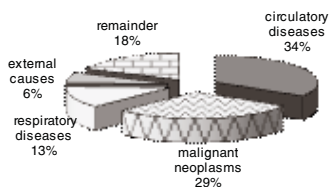


Fig. 6 Principal causes of death Q2 2009



There were 5,356 deaths of persons aged 65 and over registered in quarter 2 2009. This represents an annual death rate of 43.3 per 1,000 population aged 65 and over. See tables 1, 2 and fig. 5.

Cause of death

- **Diseases of the Circulatory System:**

Diseases of the Circulatory System accounted for 2,374 deaths, or an annual rate of 2.1 per 1,000 population. Of these, 1,261 were due to Ischaemic Heart Disease and 516 to Cerebrovascular Disease. See table 11, and fig. 6.

- **Malignant Neoplasms:**

There were 2,024 deaths from malignant neoplasms. This is equivalent to an annual rate of 1.8 per 1,000 population. See table 11, and fig. 6.

- **Diseases of the Respiratory System:**

Deaths from pneumonia numbered 339; chronic lower respiratory disease accounted for 385 deaths and 180 deaths resulted from other respiratory diseases. See table 11, and fig. 6.

Natural increase

The natural increase in the population (births minus deaths) for quarter 2 2009 was 11,824. This represents a rate of 10.6 per 1,000 population, 0.2 above quarter 2 of 2008. See tables 1 and 2.

Marriages

The number of marriages registered during the quarter was 5,342, equivalent to an annual marriage rate of 4.8 per 1,000 population, 0.1 below the corresponding quarter of 2008. The quarter 2 2009 total is 14.4% higher than in quarter 2 2000 when 4,670 marriages were registered. See tables 1, 2 and fig. 1.

Population

The estimated population in April 2009 was 4,459,300.

Methodology

All figures in this report are classified by quarter of registration. Delay in the registration of some births, deaths and marriages result in them being included in a later period in these quarterly reports.

Changes in methodology

The extension of the Limerick City boundary, which came into operation on 1st March 2008, has been taken into account in the compilation of the statistics from the Second Quarter of 2008. As a result, data for Limerick City and County are not directly comparable with any quarter prior to the Second Quarter 2008.

This publication continues with the 3 major changes in the methods by which mortality statistics are compiled. These changes were introduced in the Vital Statistics First Quarter 2007 publication.

- 1) Underlying Cause of Death is classified according to International Classification of Diseases, Version 10 (ICD10) instead of to International Classification of Diseases, Version 9 (ICD9). In addition, this and future publications will incorporate certain official updates to ICD-10. In particular, mental and behavioural disorders due to psychoactive substance use (F10-F19), with mention of intestinal infectious diseases (A00-A09), accidental, intentional self and undetermined intent poisoning by and exposure to noxious substances (X40-X49, X60-X69, Y10-Y19) or assault by chemical or noxious substance (X85-X90), are now coded to the latter.

<http://www.who.int/classifications/icd/OfficialWHOUpdatesCombined1996-2008VOLUME2.pdf>

- 2) Deaths where there was not an inquest have been coded using the automated coding system developed by the U.S National Centre for Health Statistics (NCHS). Previously the Underlying Cause of Death was chosen manually for all deaths.
- 3) All deaths registered in the quarter have been included in the statistics, in some cases with a provisional cause of death. Prior to quarter 1 of 2007 the practice was not to include deaths in the quarterly statistics until the cause of death had been definitely established.

Because of these changes, caution should be taken in directly comparing these mortality statistics with those of previous quarters. Many countries have found that moving to ICD10 does affect certain specific categories of causes of death. In particular, a significant drop in the number of deaths attributed to pneumonia and bronchopneumonia has been observed in some countries after moving to ICD10. These deaths were instead assigned to other conditions included on the death certificate.

The effect of the third change above has been to increase the number of deaths in our statistics as compared with previous years. Statistics for deaths due to external causes are particularly affected by this change. The previous method meant that some deaths were included in a later quarter of the year from when they had been registered, because of the delay involved in establishing a definite cause of death.

Tables

Table 1 Marriages, births, deaths and natural increase

	Marriages ¹	Live Births				Deaths ²				Natural Increase
		Total	First	Outside marriage	Average Age	Total	Infant	Neonatal	65 & over	
Quarter 1										
2000	2,200	13,984	5,693	4,656	30.0	9,804	86	59	8,062	4,180
2001	2,168	14,785	5,963	4,877	30.1	8,408	81	56	6,747	6,377
2002	2,484	14,972	6,127	4,877	30.3	7,749	73	51	6,281	7,223
2003	2,571	15,238	6,158	5,080	30.3	7,756	67	52	6,259	7,482
2004	2,676	15,599	6,082	5,181	30.7	7,873	72	56	6,347	7,726
2005	2,892	15,334	6,290	5,147	30.9	7,352	65	47	5,920	7,982
2006	3,267	15,958	6,449	5,481	30.9	7,320	56	36	6,040	8,638
2007	3,399	17,473	7,226	5,905	31.1	7,910	48	37	6,326	9,563
2008	3,242	19,154	8,088	6,480	31.1	7,525	63	42	6,011	11,629
2009	3,450	18,787	7,897	6,405	31.2	8,419	59	41	6,739	10,368
Quarter 2										
2000	4,670	13,794	5,427	4,260	30.3	7,650	77	52	5,974	6,144
2001	4,533	14,303	5,615	4,307	30.5	7,260	74	55	5,808	7,043
2002	4,810	15,247	5,858	4,672	30.5	7,680	91	64	6,074	7,567
2003	4,827	15,582	6,095	4,689	30.6	7,203	83	59	5,625	8,379
2004	4,719	15,535	5,897	4,874	30.8	6,881	74	53	5,351	8,654
2005	5,374	15,306	5,922	4,810	31.1	7,349	70	52	5,826	7,957
2006	5,094	15,979	6,315	5,056	31.1	6,967	65	44	5,488	9,012
2007	5,536	17,127	6,926	5,428	31.2	6,902	60	34	5,394	10,225
2008	5,370	19,040	7,712	6,174	31.2	7,569	90	62	5,857	11,471
2009	5,342	18,844	7,858	6,114	31.3	7,020	52	41	5,356	11,824
Quarter 3										
2000	7,593	13,967	5,641	4,451	30.2	6,832	89	54	5,372	7,135
2001	7,557	14,688	5,901	4,472	30.3	6,974	97	67	5,403	7,714
2002	7,580	15,593	6,333	4,855	30.4	6,941	68	50	5,391	8,652
2003	7,996	15,909	6,240	4,981	30.6	6,639	85	68	5,147	9,270
2004	8,168	15,605	6,171	5,100	30.8	6,473	72	43	5,123	9,132
2005	8,347	16,170	6,548	5,101	30.9	6,380	50	33	4,919	9,790
2006	8,341	16,920	6,891	5,541	31.0	6,657	58	46	5,146	10,263
2007	8,733	18,554	7,636	6,019	31.1	6,455	48	32	4,976	12,099
2008	8,765	18,991	7,960	6,286	31.1	6,674	67	50	5,108	12,317
2009										
Quarter 4										
2000	4,705	12,494	5,236	3,868	30.2	6,829	70	53	5,324	5,665
2001	4,988	14,106	5,915	4,393	30.3	7,170	85	57	5,422	6,936
2002	5,682	14,709	5,989	4,411	30.5	6,978	74	49	5,378	7,731
2003	4,908	14,788	5,883	4,563	30.7	7,225	76	52	5,568	7,563
2004	5,056	14,945	5,975	4,783	30.9	6,924	82	62	5,253	8,021
2005	4,742	14,232	5,861	4,470	31.1	6,360	59	45	4,827	7,872
2006	5,139	15,380	6,456	5,217	31.0	6,535	58	42	4,946	8,845
2007	4,876	17,466	7,481	5,818	31.1	6,783	65	46	5,128	10,683
2008	4,866	17,880	7,608	5,904	31.2	6,424	70	46	4,871	11,456
2009										
Total										
2000	19,168	54,239	21,997	17,235	30.2	31,115	322	218	24,732	23,124
2001	19,246	57,882	23,394	18,049	30.3	29,812	337	235	23,380	28,070
2002	20,556	60,521	24,307	18,815	30.4	29,348	306	214	23,124	31,173
2003	20,302	61,517	24,376	19,313	30.6	28,823	311	231	22,599	32,694
2004	20,619	61,684	24,125	19,938	30.8	28,151	300	214	22,074	33,533
2005	21,355	61,042	24,621	19,528	31.0	27,441	244	177	21,492	33,601
2006	21,841	64,237	26,111	21,295	31.0	27,479	237	168	21,620	36,758
2007	22,544	70,620	29,269	23,170	31.1	28,050	221	149	21,824	42,570
2008	22,243	75,065	31,368	24,844	31.1	28,192	290	200	21,847	46,873
2009										

¹ 2002, 2005 and 2006 marriage figures are final. All other marriage figures are subject to revision.² See 'Commentary' for changes in methodology effective from 2007.

Table 2 Annual marriage, birth, death and natural increase rates per 1,000 population

	Marriages	Live Births			Deaths				Natural Increase
		Total	% First births ¹	% Outside marriage	Total	Infant Mortality ²	Neonatal Mortality ³	65 & over	
Quarter 1									
2000	2.4	14.9	40.9	33.3	10.5	6.1	4.2	76.4	4.5
2001	2.3	15.6	40.5	33.0	8.9	5.5	3.8	63.5	6.7
2002	2.6	15.6	41.2	32.6	8.1	4.9	3.4	58.5	7.5
2003	2.6	15.6	40.7	33.3	7.9	4.4	3.4	57.4	7.6
2004	2.7	15.7	40.4	33.2	7.9	4.6	3.6	57.5	7.8
2005	2.9	15.2	41.3	33.6	7.3	4.2	3.1	52.7	7.9
2006	3.2	15.4	41.1	34.3	7.1	3.5	2.3	52.6	8.4
2007	3.2	16.5	42.2	33.8	7.5	2.7	2.1	54.1	9.0
2008	3.0	17.7	42.6	33.8	6.9	3.3	2.2	51.1	10.7
2009	3.1	17.0	42.2	34.1	7.6	3.1	2.2	56.0	9.4
Quarter 2									
2000	4.9	14.6	39.5	30.9	8.1	5.6	3.8	56.3	6.5
2001	4.7	14.9	39.5	30.1	7.5	5.2	3.8	54.1	7.3
2002	4.9	15.6	38.8	30.6	7.8	6.0	4.2	55.7	7.7
2003	4.9	15.7	39.5	30.1	7.2	5.3	3.8	50.9	8.4
2004	4.7	15.4	38.8	31.4	6.8	4.8	3.4	47.6	8.6
2005	5.2	14.8	38.8	31.4	7.1	4.6	3.4	50.8	7.7
2006	4.8	15.1	41.1	31.6	6.6	4.1	2.8	46.9	8.5
2007	5.1	15.8	40.9	31.7	6.4	3.5	2.0	45.9	9.4
2008	4.9	17.2	40.8	32.4	6.8	4.7	3.3	48.6	10.4
2009	4.8	16.9	42.0	32.4	6.3	2.8	2.2	43.3	10.6
Quarter 3									
2000	8.0	14.7	40.6	31.9	7.2	6.4	3.9	50.6	7.5
2001	7.9	15.3	40.4	30.4	7.3	6.6	4.6	50.3	8.0
2002	7.7	15.9	41.0	31.1	7.1	4.4	3.2	49.5	8.8
2003	8.0	16.0	39.6	31.3	6.7	5.3	4.3	46.6	9.3
2004	8.1	15.4	39.8	32.7	6.4	4.6	2.8	45.6	9.0
2005	8.1	15.6	40.7	31.5	6.2	3.1	2.0	42.9	9.5
2006	7.9	16.0	41.6	32.7	6.3	3.4	2.7	44.0	9.7
2007	8.1	17.1	41.4	32.4	6.0	2.6	1.7	42.3	11.2
2008	7.9	17.2	42.1	33.1	6.0	3.5	2.6	42.4	11.1
2009									
Quarter 4									
2000	5.0	13.2	42.1	31.0	7.2	5.6	4.2	50.1	6.0
2001	5.2	14.7	42.2	31.1	7.5	6.0	4.0	50.5	7.2
2002	5.8	15.0	41.2	30.0	7.1	5.0	3.3	49.3	7.9
2003	4.9	14.9	40.9	30.9	7.3	5.1	3.5	50.4	7.6
2004	5.0	14.8	40.3	32.0	6.8	5.5	4.1	46.7	7.9
2005	4.6	13.8	41.4	31.4	6.2	4.1	3.2	42.1	7.6
2006	4.8	14.5	42.3	33.9	6.2	3.8	2.7	42.3	8.3
2007	4.5	16.1	43.2	33.3	6.3	3.7	2.6	43.6	9.8
2008	4.4	16.2	42.8	33.0	5.8	3.9	2.6	40.5	10.4
2009									
Total									
2000	5.1	14.3	40.8	31.8	8.2	5.9	4.0	58.2	6.1
2001	5.0	15.0	40.7	31.2	7.7	5.8	4.1	54.4	7.3
2002	5.2	15.5	40.5	31.1	7.5	5.1	3.5	53.0	8.0
2003	5.1	15.5	40.2	31.4	7.2	5.1	3.8	51.1	8.2
2004	5.1	15.2	39.8	32.3	7.0	4.9	3.5	49.1	8.3
2005	5.2	14.8	40.5	32.0	6.6	4.0	2.9	46.8	8.1
2006	5.2	15.2	41.5	33.2	6.5	3.7	2.6	46.2	8.7
2007	5.2	16.3	41.9	32.8	6.5	3.1	2.1	46.4	9.8
2008	5.0	17.0	42.1	33.1	6.4	3.9	2.7	45.4	10.6
2009									

¹ First births divided by the total number of live births (excluding those with unstated parity), multiplied by 100.² Infant mortality is the number of infant deaths per 1,000 live births.³ Neonatal mortality is the number of neonatal (infants aged under 4 weeks) deaths per 1,000 live births.

Table 3 Births registered, classified by area of residence of mother

Area of residence	Total	Male	Female	Rate ¹
STATE	18,844	9,588	9,256	16.9
LEINSTER	10,578	5,359	5,219	17.5
Carlow	261	130	131	19.7
Dublin City	1,932	970	962	14.5
South Dublin	1,192	604	588	18.4
Fingal	1,393	710	683	22.1
Dun Laoghaire Rathdown	711	367	344	13.9
Kildare	979	474	505	20.0
Kilkenny	359	188	171	15.6
Laois	343	172	171	19.5
Longford	174	88	86	19.2
Louth	447	225	222	15.3
Meath	901	456	445	21.0
Offaly	300	154	146	16.1
Westmeath	350	185	165	16.8
Wexford	621	323	298	17.9
Wicklow	615	313	302	18.5
MUNSTER	5,108	2,632	2,476	16.6
Clare	480	261	219	16.5
Cork City	532	264	268	16.9
Cork County	1,641	844	797	17.2
Kerry	577	285	292	15.7
Limerick City	214	117	97	13.6
Limerick County	588	298	290	18.0
North Tipperary	286	153	133	16.5
South Tipperary	339	183	156	15.5
Waterford City	180	88	92	15.0
Waterford County	271	139	132	16.6
CONNACHT	2,070	1,027	1,043	15.6
Galway City	266	126	140	14.0
Galway County	770	396	374	18.4
Leitrim	113	54	59	14.8
Mayo	462	233	229	14.2
Roscommon	219	105	114	14.2
Sligo	240	113	127	15.0
ULSTER (PART OF)	1,088	570	518	15.5
Cavan	296	153	143	17.6
Donegal	598	317	281	15.4
Monaghan	194	100	94	13.2
REGIONAL AUTHORITIES:				
Border	1,888	962	926	15.2
Midland	1,167	599	568	17.4
West	1,717	860	857	16.0
Dublin	5,228	2,651	2,577	17.0
Mid-East	2,495	1,243	1,252	19.2
Mid-West	1,568	829	739	16.7
South-East	2,031	1,051	980	16.5
South-West	2,750	1,393	1,357	16.9

¹ Births per year per 1,000 population. Annual rates based on estimated 2009 population.

Table 4 Births registered, classified by age of mother and previous number of liveborn children

Age of mother at maternity	Previous number of liveborn children							
	Total	0	1	2	3	4	5 or more	Not stated
All ages	18,844	7,858	6,011	3,032	1,228	384	200	131
15 and under	15	15	-	-	-	-	-	-
16	32	32	-	-	-	-	-	-
17	103	97	6	-	-	-	-	-
18	167	152	12	1	-	-	-	2
19	257	221	32	2	-	-	-	2
Under 20	574	517	50	3	-	-	-	4
20	316	249	60	5	2	-	-	-
21	354	278	62	13	-	-	-	1
22	430	284	114	24	7	-	-	1
23	476	297	126	41	6	2	-	4
24	555	316	175	39	19	2	-	4
20-24	2,131	1,424	537	122	34	4	-	10
25	666	360	212	57	27	9	1	-
26	809	427	255	89	20	9	2	7
27	904	474	278	109	24	9	3	7
28	1,015	498	306	140	44	13	7	7
29	1,200	583	366	134	65	26	18	8
25-29	4,594	2,342	1,417	529	180	66	31	29
30	1,197	554	386	163	68	13	10	3
31	1,245	514	452	178	70	13	14	4
32	1,328	512	501	191	70	29	15	10
33	1,328	464	474	252	86	28	15	9
34	1,228	345	489	245	90	24	19	16
30-34	6,326	2,389	2,302	1,029	384	107	73	42
35	1,192	321	432	295	83	41	10	10
36	1,093	252	407	267	118	26	11	12
37	851	184	282	235	104	28	15	3
38	709	150	205	196	111	27	14	6
39	502	90	141	135	86	32	12	6
35-39	4,347	997	1,467	1,128	502	154	62	37
40	325	73	91	82	42	25	9	3
41	238	51	66	60	40	13	5	3
42	132	25	30	34	21	10	11	1
43	85	18	21	22	16	3	5	-
44	38	10	9	10	6	1	1	1
40-44	818	177	217	208	125	52	31	8
45 and over	40	7	16	10	3	1	3	-
Age not stated	14	5	5	3	-	-	-	1

Table 5 Number and percentage of births registered within and outside marriage, classified by age of mother

Age of mother at maternity	Total	Married parents	Unmarried Parents		% to married parents	% to unmarried parents	
			Total	Same address		Total	Same address
	Number				Percentage		
All ages	18,844	12,730	6,114	3,802	68	32	20
15 and under	15	-	15	3	-	100	20
16	32	1	31	4	3	97	13
17	103	9	94	36	9	91	35
18	167	12	155	58	7	93	35
19	257	30	227	93	12	88	36
Under 20	574	52	522	194	9	91	34
20	316	45	271	109	14	86	34
21	354	65	289	138	18	82	39
22	430	101	329	166	23	77	39
23	476	108	368	219	23	77	46
24	555	172	383	243	31	69	44
20-24	2,131	491	1,640	875	23	77	41
25	666	272	394	248	41	59	37
26	809	415	394	259	51	49	32
27	904	491	413	275	54	46	30
28	1,015	652	363	257	64	36	25
29	1,200	834	366	265	69	31	22
25-29	4,594	2,664	1,930	1,304	58	42	28
30	1,197	885	312	225	74	26	19
31	1,245	981	264	186	79	21	15
32	1,328	1,098	230	160	83	17	12
33	1,328	1,113	215	164	84	16	12
34	1,228	1,049	179	128	85	15	10
30-34	6,326	5,126	1,200	863	81	19	14
35	1,192	1,016	176	125	85	15	10
36	1,093	919	174	124	84	16	11
37	851	725	126	87	85	15	10
38	709	614	95	71	87	13	10
39	502	425	77	45	85	15	9
35-39	4,347	3,699	648	452	85	15	10
40	325	265	60	39	82	18	12
41	238	189	49	32	79	21	13
42	132	106	26	18	80	20	14
43	85	67	18	13	79	21	15
44	38	34	4	2	89	11	5
40-44	818	661	157	104	81	19	13
45 and over	40	30	10	5	75	25	13
Age not stated	14	7	7	5	50	50	36

Table 6 Number and percentage of births registered within and outside marriage, classified by area of residence of mother

Area of residence	Total	Married parents	Unmarried Parents		% to married parents	% to unmarried parents	
			Total	Same address		Total	Same address
	Number				Percentage		
STATE	18,844	12,730	6,114	3,802	68	32	20
LEINSTER	10,578	6,897	3,681	2,136	65	35	20
Carlow	261	152	109	65	58	42	25
Dublin City	1,932	1,111	821	365	58	42	19
South Dublin	1,192	674	518	252	57	43	21
Fingal	1,393	977	416	252	70	30	18
Dun Laoghaire Rathdown	711	530	181	118	75	25	17
Kildare	979	710	269	180	73	27	18
Kilkenny	359	242	117	58	67	33	16
Laois	343	223	120	94	65	35	27
Longford	174	117	57	35	67	33	20
Louth	447	281	166	131	63	37	29
Meath	901	660	241	188	73	27	21
Offaly	300	213	87	64	71	29	21
Westmeath	350	245	105	68	70	30	19
Wexford	621	359	262	144	58	42	23
Wicklow	615	403	212	122	66	34	20
MUNSTER	5,108	3,537	1,571	1,101	69	31	22
Clare	480	338	142	113	70	30	24
Cork City	532	323	209	144	61	39	27
Cork County	1,641	1,243	398	303	76	24	18
Kerry	577	413	164	85	72	28	15
Limerick City	214	100	114	76	47	53	36
Limerick County	588	416	172	149	71	29	25
North Tipperary	286	199	87	68	70	30	24
South Tipperary	339	209	130	72	62	38	21
Waterford City	180	107	73	43	59	41	24
Waterford County	271	189	82	48	70	30	18
CONNACHT	2,070	1,519	551	377	73	27	18
Galway City	266	170	96	64	64	36	24
Galway County	770	590	180	143	77	23	19
Leitrim	113	92	21	18	81	19	16
Mayo	462	335	127	69	73	27	15
Roscommon	219	163	56	38	74	26	17
Sligo	240	169	71	45	70	30	19
ULSTER (PART OF)	1,088	777	311	188	71	29	17
Cavan	296	209	87	71	71	29	24
Donegal	598	430	168	69	72	28	12
Monaghan	194	138	56	48	71	29	25
REGIONAL AUTHORITIES:							
Border	1,888	1,319	569	382	70	30	20
Midland	1,167	798	369	261	68	32	22
West	1,717	1,258	459	314	73	27	18
Dublin	5,228	3,292	1,936	987	63	37	19
Mid-East	2,495	1,773	722	490	71	29	20
Mid-West	1,568	1,053	515	406	67	33	26
South-East	2,031	1,258	773	430	62	38	21
South-West	2,750	1,979	771	532	72	28	19

Table 7 Births registered, classified by area of residence and age of mother

Area of residence	Total	Under 20	20-24	25-29	30-34	35-39	40 and over	Age not stated	Average age of mother at maternity	
									Total	First
STATE	18,844	574	2,131	4,594	6,326	4,347	858	14	31.3	29.1
LEINSTER	10,578	348	1,272	2,574	3,486	2,420	471	7	31.2	29.0
Carlow	261	13	41	75	74	50	8	-	29.9	27.4
Dublin City	1,932	73	289	479	546	459	86	-	30.8	28.8
South Dublin	1,192	64	178	329	372	201	47	1	30.1	27.9
Fingal	1,393	31	136	331	547	297	50	1	31.5	29.7
Dun Laoghaire Rathdown	711	13	45	125	262	217	48	1	33.0	30.9
Kildare	979	17	109	227	340	244	40	2	31.7	29.3
Kilkenny	359	8	36	78	126	93	18	-	32.0	29.9
Laois	343	11	50	84	94	85	19	-	31.1	30.0
Longford	174	6	25	45	43	50	4	1	30.9	27.5
Louth	447	22	54	130	137	78	26	-	30.5	27.7
Meath	901	24	75	197	323	239	43	-	32.0	29.6
Offaly	300	10	34	98	90	58	9	1	30.4	28.9
Westmeath	350	14	49	93	108	69	17	-	30.6	28.4
Wexford	621	26	93	146	197	132	27	-	30.7	27.6
Wicklow	615	16	58	137	227	148	29	-	31.7	29.6
MUNSTER	5,108	139	553	1,237	1,765	1,201	208	5	31.4	29.2
Clare	480	15	53	113	150	122	27	-	31.6	28.7
Cork City	532	18	73	138	176	108	19	-	30.7	28.7
Cork County	1,641	31	140	357	631	412	68	2	32.0	30.0
Kerry	577	14	76	134	184	138	30	1	31.4	29.3
Limerick City	214	11	41	61	62	35	2	2	29.3	27.3
Limerick County	588	17	54	154	206	132	25	-	31.4	29.0
North Tipperary	286	3	30	67	98	79	9	-	31.8	28.8
South Tipperary	339	14	36	93	109	75	12	-	30.9	29.0
Waterford City	180	12	27	56	50	30	5	-	29.7	26.9
Waterford County	271	4	23	64	99	70	11	-	32.0	30.2
CONNACHT	2,070	47	200	480	708	517	118	-	31.8	29.7
Galway City	266	9	42	75	79	53	8	-	30.4	29.2
Galway County	770	15	51	153	283	221	47	-	32.5	30.8
Leitrim	113	1	15	25	39	23	10	-	31.7	29.5
Mayo	462	13	46	124	150	105	24	-	31.3	28.6
Roscommon	219	4	20	46	81	56	12	-	32.3	29.7
Sligo	240	5	26	57	76	59	17	-	31.8	28.6
ULSTER (PART OF)	1,088	40	106	303	367	209	61	2	31.1	28.0
Cavan	296	11	36	83	97	54	14	1	30.8	27.9
Donegal	598	19	54	163	204	121	36	1	31.4	28.4
Monaghan	194	10	16	57	66	34	11	-	30.9	26.6
REGIONAL AUTHORITIES:										
Border	1,888	68	201	515	619	369	114	2	31.1	28.1
Midland	1,167	41	158	320	335	262	49	2	30.8	29.0
West	1,717	41	159	398	593	435	91	-	31.8	29.8
Dublin	5,228	181	648	1,264	1,727	1,174	231	3	31.1	29.1
Mid-East	2,495	57	242	561	890	631	112	2	31.8	29.5
Mid-West	1,568	46	178	395	516	368	63	2	31.2	28.6
South-East	2,031	77	256	512	655	450	81	-	31.0	28.5
South-West	2,750	63	289	629	991	658	117	3	31.6	29.6

Table 8 Births registered outside marriage, classified by area of residence and age of mother

Area of residence	Total	Under 25	25-29	30-34	35-39	40 and over	Age not stated	Average age of mother at maternity	
								Total	First
STATE	6,114	2,162	1,930	1,200	648	167	7	27.8	26.0
LEINSTER	3,681	1,308	1,149	715	400	106	3	27.8	26.1
Carlow	109	44	34	15	14	2	-	27.2	25.0
Dublin City	821	301	266	137	96	21	-	27.7	26.1
South Dublin	518	204	164	100	40	10	-	27.0	25.2
Fingal	416	122	135	98	46	15	-	28.5	26.7
Dun Laoghaire Rathdown	181	46	51	44	25	14	1	29.6	28.1
Kildare	269	96	83	57	27	5	1	27.8	26.6
Kilkenny	117	35	34	27	15	6	-	28.9	27.5
Laois	120	51	32	15	19	3	-	27.5	26.9
Longford	57	18	17	10	11	1	-	28.3	24.3
Louth	166	62	60	29	11	4	-	26.9	24.3
Meath	241	78	72	56	30	5	-	28.2	25.9
Offaly	87	34	32	11	9	-	1	26.7	25.5
Westmeath	105	47	29	19	7	3	-	26.6	25.2
Wexford	262	105	73	51	23	10	-	27.5	25.2
Wicklow	212	65	67	46	27	7	-	28.4	27.1
MUNSTER	1,571	544	510	318	162	34	3	27.8	26.1
Clare	142	53	44	23	17	5	-	27.7	25.2
Cork City	209	73	61	50	20	5	-	27.8	26.0
Cork County	398	136	126	90	36	8	2	27.8	26.5
Kerry	164	61	53	24	20	6	-	27.8	26.0
Limerick City	114	44	35	23	10	1	1	27.2	25.2
Limerick County	172	54	51	41	23	3	-	28.2	26.5
North Tipperary	87	28	32	18	8	1	-	27.9	25.6
South Tipperary	130	42	49	27	10	2	-	27.5	26.1
Waterford City	73	31	27	9	6	-	-	26.5	24.8
Waterford County	82	22	32	13	12	3	-	28.9	27.2
CONNACHT	551	186	180	102	65	18	-	28.0	26.4
Galway City	96	32	33	17	11	3	-	28.3	26.9
Galway County	180	54	58	27	31	10	-	28.7	27.1
Leitrim	21	9	5	5	2	-	-	27.3	25.8
Mayo	127	47	44	26	7	3	-	27.1	25.5
Roscommon	56	19	16	14	6	1	-	28.4	28.1
Sligo	71	25	24	13	8	1	-	27.4	24.4
ULSTER (PART OF)	311	124	91	65	21	9	1	27.1	24.7
Cavan	87	39	25	18	5	-	-	26.5	24.7
Donegal	168	62	48	36	12	9	1	27.7	25.1
Monaghan	56	23	18	11	4	-	-	26.2	23.4
REGIONAL AUTHORITIES:									
Border	569	220	180	112	42	14	1	27.1	24.6
Midland	369	150	110	55	46	7	1	27.2	25.9
West	459	152	151	84	55	17	-	28.1	26.7
Dublin	1,936	673	616	379	207	60	1	27.8	26.2
Mid-East	722	239	222	159	84	17	1	28.1	26.5
Mid-West	515	179	162	105	58	10	1	27.8	25.8
South-East	773	279	249	142	80	23	-	27.7	25.8
South-West	771	270	240	164	76	19	2	27.8	26.3

Table 9 Deaths registered by county of residence of deceased

Area of residence	Total	Male	Female	Rate ¹
STATE	7,020	3,647	3,373	6.3
LEINSTER	3,549	1,773	1,776	5.9
Carlow	77	44	33	5.8
Dublin City	1,086	545	541	8.2
South Dublin	209	105	104	3.2
Fingal	247	118	129	3.9
Dun Laoghaire Rathdown	354	159	195	6.9
Kildare	223	109	114	4.6
Kilkenny	132	60	72	5.7
Laois	107	51	56	6.1
Longford	53	25	28	5.9
Louth	181	92	89	6.2
Meath	208	113	95	4.9
Offaly	103	59	44	5.5
Westmeath	130	59	71	6.2
Wexford	254	138	116	7.3
Wicklow	185	96	89	5.6
MUNSTER	2,098	1,138	960	6.8
Clare	227	133	94	7.8
Cork City	294	156	138	9.4
Cork County	472	275	197	5.0
Kerry	264	138	126	7.2
Limerick City	112	60	52	7.1
Limerick County	261	128	133	8.0
North Tipperary	130	76	54	7.5
South Tipperary	150	75	75	6.9
Waterford City	65	36	29	5.4
Waterford County	123	61	62	7.5
CONNACHT	870	472	398	6.6
Galway City	37	20	17	1.9
Galway County	311	160	151	7.4
Leitrim	58	32	26	7.6
Mayo	242	137	105	7.4
Roscommon	121	76	45	7.8
Sligo	101	47	54	6.3
ULSTER (PART OF)	503	264	239	7.2
Cavan	129	67	62	7.7
Donegal	257	139	118	6.6
Monaghan	117	58	59	7.9
REGIONAL AUTHORITIES:				
Border	843	435	408	6.8
Midland	393	194	199	5.8
West	711	393	318	6.6
Dublin	1,896	927	969	6.2
Mid-East	616	318	298	4.7
Mid-West	730	397	333	7.8
South-East	801	414	387	6.5
South-West	1,030	569	461	6.3

¹ Deaths per year per 1,000 population. Annual rates based on estimated 2009 population.

Table 10 Deaths registered by cause of death and county of residence of deceased

Area of residence	Total deaths	Malignant Neoplasms	Diseases of the Circulatory system	Diseases of the Respiratory system	External causes	All other causes
STATE	7,020	2,024	2,374	904	441	1,277
LEINSTER	3,549	1,042	1,140	478	216	673
Carlow	77	17	31	13	2	14
Dublin City	1,086	302	354	135	76	219
South Dublin	209	57	73	22	17	40
Fingal	247	83	73	33	16	42
Dun Laoghaire Rathdown	354	119	97	49	22	67
Kildare	223	54	71	38	17	43
Kilkenny	132	44	42	14	6	26
Laois	107	34	34	11	3	25
Longford	53	11	18	12	3	9
Louth	181	55	47	31	13	35
Meath	208	52	70	31	16	39
Offaly	103	31	37	16	5	14
Westmeath	130	41	48	15	1	25
Wexford	254	79	81	37	11	46
Wicklow	185	63	64	21	8	29
MUNSTER	2,098	606	723	255	164	350
Clare	227	61	77	34	15	40
Cork City	294	92	95	33	35	39
Cork County	472	144	169	56	25	78
Kerry	264	79	103	22	16	44
Limerick City	112	32	37	15	11	17
Limerick County	261	63	83	40	26	49
North Tipperary	130	39	47	8	12	24
South Tipperary	150	41	53	15	11	30
Waterford City	65	23	20	10	4	8
Waterford County	123	32	39	22	9	21
CONNACHT	870	253	329	101	39	148
Galway City	37	10	12	5	3	7
Galway County	311	92	123	29	16	51
Leitrim	58	18	16	11	1	12
Mayo	242	64	100	28	13	37
Roscommon	121	39	40	16	4	22
Sligo	101	30	38	12	2	19
ULSTER (PART OF)	503	123	182	70	22	106
Cavan	129	35	42	16	10	26
Donegal	257	60	102	33	6	56
Monaghan	117	28	38	21	6	24
REGIONAL AUTHORITIES:						
Border	843	226	283	124	38	172
Midland	393	117	137	54	12	73
West	711	205	275	78	36	117
Dublin	1,896	561	597	239	131	368
Mid-East	616	169	205	90	41	111
Mid-West	730	195	244	97	64	130
South-East	801	236	266	111	43	145
South-West	1,030	315	367	111	76	161

Table 11 Deaths registered classified by cause and age group

Cause of Death	65 COD Code	ICD-10 Code	Total Deaths	Age Group										
				Under 1	1-4	5-14	15-24	25-34	35-44	45-54	55-64	65-74	75-84	85 and over
Total deaths	0	A00-Y89	7,020	52	18	13	64	131	214	406	766	1,244	2,181	1,931
Infectious and parasitic diseases:-	1	A00-B99	60	0	4	0	2	2	2	5	6	10	14	15
Tuberculosis	2	A15-A19,B90	7	0	0	0	0	1	0	0	1	3	1	1
Meningococcal infection	3	A39	2	0	1	0	1	0	0	0	0	0	0	0
AIDS (HIV Disease)	4	B20-B24	2	0	0	0	0	0	1	0	1	0	0	0
Viral Hepatitis	5	B15-B19	5	0	0	0	1	0	1	2	1	0	0	0
Other infectious and parasitic diseases			44	0	3	0	0	1	0	3	3	7	13	14
Neoplasms	6	C00-D48	2,063	1	4	0	4	16	59	159	340	550	650	280
Malignant Neoplasms of the:-	7	C00-C97	2,024	1	3	0	4	15	58	156	335	545	638	269
Lip, oral cavity, pharynx	8	C00-C14	34	0	0	0	1	1	0	3	6	10	10	3
Oesophagus	9	C15	104	0	0	0	0	0	2	6	15	32	31	18
Stomach	10	C16	83	0	0	0	0	0	3	4	10	30	24	12
Colon	11	C18	142	0	0	0	0	0	5	6	19	39	45	28
Rectum and anus	12	C19-C21	87	0	0	0	0	0	1	7	22	20	27	10
Liver and the intrahepatic bile ducts	13	C22	63	0	0	0	0	0	1	3	19	11	23	6
Pancreas	14	C25	118	0	0	0	0	0	6	9	16	32	40	15
Larynx and trachea/bronchus /lung	15	C32-C34	452	0	0	0	0	0	1	35	95	136	150	35
Skin	16	C43	31	0	0	0	0	1	7	3	6	6	5	3
Breast	17	C50	158	0	0	0	0	0	8	30	31	44	28	17
Cervix uteri	18	C53	21	0	0	0	0	1	4	6	4	4	1	1
Other parts of uterus	19	C54-C55	22	0	0	0	0	0	0	2	5	3	7	5
Ovary	20	C56	56	0	0	0	0	0	1	8	13	11	20	3
Prostate	21	C61	119	0	0	0	0	0	0	1	7	33	51	27
Kidney	22	C64	49	0	0	0	0	2	0	1	8	15	17	6
Bladder	23	C67	52	0	0	0	0	0	2	4	4	10	24	8
Lymph/haematopoietic tissue	24	C81-C96	150	1	0	0	1	3	5	8	13	38	53	28
Other malignant neoplasms			283	0	3	0	2	7	12	20	42	71	82	44
Diseases of the blood and blood-forming organs, immunological disorders	25	D50-D89	16	0	0	0	0	1	1	2	0	3	5	4
Endocrine, Nutritional and metabolic diseases	26	E00-E90	148	0	0	1	3	5	4	6	10	23	45	51
Diabetes mellitus	27	E10-E14	108	0	0	0	1	1	2	2	7	18	36	41
Mental and behavioural disorders	28	F00-F99	144	0	0	0	0	0	0	0	3	15	43	83
Diseases of the nervous system and the sense organs	31	G00-H95	229	0	1	1	5	5	12	9	31	23	80	62
Meningitis	32	G00-G03	2	0	0	0	0	0	0	1	1	0	0	0
Diseases of the Circulatory System:-	33	I00-I99	2,374	0	0	0	0	8	27	93	231	376	781	858
Ischaemic heart disease	34	I20-I25	1,261	0	0	0	0	5	15	53	156	226	403	403
of which: (Acute myocardial infarction)		I21	575	0	0	0	0	2	7	14	59	107	202	184
Other heart disease	35	I30-I33,I39-I52	300	0	0	0	0	2	5	10	19	38	92	134
Cerebrovascular disease	36	I60-I69	516	0	0	0	0	1	4	21	33	68	172	217
Other diseases of circulatory system			297	0	0	0	0	0	3	9	23	44	114	104

Diseases of the Respiratory system	37	J00-J99	904	0	0	0	1	1	3	12	44	136	352	355
Influenza	38	J10-J11	0	0	0	0	0	0	0	0	0	0	0	0
Pneumonia	39	J12-J19	339	0	0	0	0	0	1	1	15	39	110	173
Chronic Lower respiratory disease	40	J40-J47	385	0	0	0	1	0	1	7	18	67	172	119
<i>of which: Asthma</i>	41	J45-J46	11	0	0	0	1	0	0	2	3	0	1	4
Other diseases of the respiratory system			180	0	0	0	0	1	1	4	11	30	70	63
Diseases of the Digestive system	42	K00-K93	308	0	0	0	0	5	18	46	39	46	81	73
Ulcer of stomach, duodenum and jejunum	43	K25-K28	23	0	0	0	0	0	1	5	4	0	6	7
Chronic liver disease	44	K70,K73-K74	88	0	0	0	0	1	15	31	19	9	10	3
Other diseases of the digestive system			197	0	0	0	0	4	2	10	16	37	65	63
Diseases of the skin and subcutaneous tissue	45	L00-L99	17	0	0	0	0	0	0	0	2	3	8	4
Diseases of the musculoskeletal system/connective tissue	46	M00-M99	47	0	0	0	0	0	0	2	4	10	13	18
Rheumatoid arthritis and osteoarthritis	47	M05-M06,M15-M19	16	0	0	0	0	0	0	0	1	5	4	6
Diseases of the genitourinary system	48	N00-N99	174	1	0	0	0	0	4	3	3	13	58	92
Diseases of the kidney and ureter	49	N00-N29	123	1	0	0	0	0	3	2	1	10	38	68
Complications of pregnancy, childbirth and puerperium	50	O00-O99	1	0	0	0	0	1	0	0	0	0	0	0
Certain conditions originating in the perinatal period¹	51	P00-P96	20	20	0	0	0	0	0	0	0	0	0	0
Congenital malformations and chromosomal abnormalities	52	Q00-Q99	50	26	5	3	3	2	4	4	1	0	2	0
Congenital malformations of the:-														
Nervous system	53	Q00-Q07	8	3	3	1	0	1	0	0	0	0	0	0
Circulatory system	54	Q20-Q28	14	7	0	1	1	0	4	1	0	0	0	0
Symptoms, signs, abnormal findings, ill-defined causes	55	R00-R99	26	3	3	0	0	2	4	1	0	3	4	6
Sudden infant death syndrome	56	R95	6	3	3	0	0	0	0	0	0	0	0	0
Unknown and unspecified causes	57	R96-R99	8	0	0	0	0	2	3	1	0	1	0	1
External causes of injury and poisoning	58	V01-Y89	441	1	3	8	46	83	76	64	52	33	45	30
Accidents	59	V01-X59	266	1	3	5	26	41	38	28	37	18	41	28
<i>of which: Transport accidents</i>	60	V01-V99	59	1	1	5	15	10	8	2	4	6	7	0
<i>Accidental falls</i>	61	W00-W19	68	0	0	0	0	2	5	3	10	5	27	16
<i>Accidental poisoning</i>	62	X40-X49	84	0	0	0	9	25	20	10	13	3	4	0
<i>other accidents</i>			55	0	2	0	2	4	5	13	10	4	3	12
Suicide and intentional self harm	63	X60-X84	122	0	0	1	15	33	27	26	8	10	2	0
Homicide/assault	64	X85-Y09	15	0	0	2	0	5	4	1	2	1	0	0
Events of undetermined intent	65	Y10-Y34	31	0	0	0	5	4	7	9	4	1	0	1
All other external causes			7	0	0	0	0	0	0	0	1	3	2	1

¹ Stillbirths not included.

Table 12 Male deaths registered classified by cause and age group

Cause of Death	65 COD Code	ICD-10 Code	Total Males	Age Group										
				Under 1	1-4	5-14	15-24	25-34	35-44	45-54	55-64	65-74	75-84	85 and over
Total Male Deaths	0	A00-Y89	3,647	28	11	6	46	92	147	249	486	749	1,154	679
Infectious and parasitic diseases:-	1	A00-B99	29	0	2	0	2	2	2	4	6	5	3	3
Tuberculosis	2	A15-A19,B90	4	0	0	0	0	1	0	0	1	2	0	0
Meningococcal infection	3	A39	2	0	1	0	1	0	0	0	0	0	0	0
AIDS (HIV Disease)	4	B20-B24	2	0	0	0	0	0	1	0	1	0	0	0
Viral Hepatitis	5	B15-B19	5	0	0	0	1	0	1	2	1	0	0	0
Other infectious and parasitic diseases			16	0	1	0	0	1	0	2	3	3	3	3
Neoplasms	6	C00-D48	1,127	1	2	0	3	8	31	75	193	340	351	123
Malignant Neoplasms of the:-	7	C00-C97	1,105	1	2	0	3	7	30	72	188	338	343	121
Lip, oral cavity, pharynx	8	C00-C14	29	0	0	0	1	1	0	3	5	9	7	3
Oesophagus	9	C15	68	0	0	0	0	0	2	4	12	23	19	8
Stomach	10	C16	54	0	0	0	0	0	3	4	5	21	16	5
Colon	11	C18	82	0	0	0	0	0	3	3	13	31	20	12
Rectum and anus	12	C19-C21	63	0	0	0	0	0	1	7	17	15	19	4
Liver and the intrahepatic bile ducts	13	C22	43	0	0	0	0	0	0	3	14	10	12	4
Pancreas	14	C25	48	0	0	0	0	0	4	4	9	17	11	3
Larynx and trachea/bronchus /lung	15	C32-C34	284	0	0	0	0	0	1	23	64	91	85	20
Skin	16	C43	22	0	0	0	0	1	4	3	5	4	3	2
Breast	17	C50	0	0	0	0	0	0	0	0	0	0	0	0
Cervix uteri	18	C53	0	0	0	0	0	0	0	0	0	0	0	0
Other parts of uterus	19	C54-C55	0	0	0	0	0	0	0	0	0	0	0	0
Ovary	20	C56	0	0	0	0	0	0	0	0	0	0	0	0
Prostate	21	C61	119	0	0	0	0	0	0	1	7	33	51	27
Kidney	22	C64	33	0	0	0	0	1	0	0	7	10	12	3
Bladder	23	C67	36	0	0	0	0	0	2	2	3	8	17	4
Lymph/haematopoietic tissue	24	C81-C96	84	1	0	0	1	2	3	4	8	26	26	13
Other malignant neoplasms			140	0	2	0	1	2	7	11	19	40	45	13
Diseases of the blood and blood-forming organs, immunological disorders	25	D50-D89	7	0	0	0	0	0	1	2	0	2	2	0
Endocrine, Nutritional and metabolic diseases	26	E00-E90	78	0	0	0	0	1	3	4	8	11	26	25
Diabetes mellitus	27	E10-E14	64	0	0	0	0	0	2	2	5	10	23	22
Mental and behavioural disorders	28	F00-F99	57	0	0	0	0	0	0	0	1	7	28	21
Diseases of the nervous system and the sense organs	31	G00-H95	105	0	1	0	4	3	8	5	15	10	36	23
Meningitis	32	G00-G03	2	0	0	0	0	0	0	1	1	0	0	0
Diseases of the Circulatory System:-	33	I00-I99	1,191	0	0	0	0	4	22	68	166	247	413	271
Ischaemic heart disease	34	I20-I25	721	0	0	0	0	2	15	46	117	162	236	143
<i>of which: (Acute myocardial infarction)</i>		<i>I21</i>	<i>324</i>	<i>0</i>	<i>0</i>	<i>0</i>	<i>0</i>	<i>2</i>	<i>7</i>	<i>13</i>	<i>47</i>	<i>76</i>	<i>113</i>	<i>66</i>
Other heart disease	35	I30-I33,I39-I52	128	0	0	0	0	2	3	7	15	26	41	34
Cerebrovascular disease	36	I60-I69	224	0	0	0	0	0	3	13	22	38	79	69
Other diseases of circulatory system			118	0	0	0	0	0	1	2	12	21	57	25

Diseases of the Respiratory system	37	J00-J99	455	0	0	0	0	0	2	5	28	74	208	138
Influenza	38	J10-J11	0	0	0	0	0	0	0	0	0	0	0	0
Pneumonia	39	J12-J19	139	0	0	0	0	0	0	0	9	19	57	54
Chronic Lower respiratory disease	40	J40-J47	214	0	0	0	0	0	1	3	12	34	106	58
<i>of which: Asthma</i>	41	J45-J46	6	0	0	0	0	0	0	1	2	0	0	3
Other diseases of the respiratory system			102	0	0	0	0	0	1	2	7	21	45	26
Diseases of the Digestive system	42	K00-K93	157	0	0	0	0	3	14	33	28	22	33	24
Ulcer of stomach, duodenum and jejunum	43	K25-K28	13	0	0	0	0	0	1	3	3	0	3	3
Chronic liver disease	44	K70,K73-K74	61	0	0	0	0	1	11	22	13	7	5	2
Other diseases of the digestive system			83	0	0	0	0	2	2	8	12	15	25	19
Diseases of the skin and subcutaneous tissue	45	L00-L99	9	0	0	0	0	0	0	0	1	1	4	3
Diseases of the musculoskeletal system/connective tissue	46	M00-M99	9	0	0	0	0	0	0	1	0	1	2	5
Rheumatoid arthritis and osteoarthritis	47	M05-M06,M15-M19	2	0	0	0	0	0	0	0	0	1	0	1
Diseases of the genitourinary system	48	N00-N99	68	1	0	0	0	0	0	2	2	7	25	31
Diseases of the kidney and ureter	49	N00-N29	51	1	0	0	0	0	0	1	1	5	19	24
Complications of pregnancy, childbirth and puerperium	50	O00-O99	0	0	0	0	0	0	0	0	0	0	0	0
Certain conditions originating in the perinatal period¹	51	P00-P96	13	13	0	0	0	0	0	0	0	0	0	0
Congenital malformations and chromosomal abnormalities	52	Q00-Q99	23	13	1	1	2	1	1	3	1	0	0	0
Congenital malformations of the:-														
Nervous system	53	Q00-Q07	3	2	0	0	0	1	0	0	0	0	0	0
Circulatory system	54	Q20-Q28	5	2	0	1	0	0	1	1	0	0	0	0
Symptoms, signs, abnormal findings, ill-defined causes	55	R00-R99	14	0	3	0	0	2	2	1	0	3	2	1
Sudden infant death syndrome	56	R95	3	0	3	0	0	0	0	0	0	0	0	0
Unknown and unspecified causes	57	R96-R99	5	0	0	0	0	2	1	1	0	1	0	0
External causes of injury and poisoning	58	V01-Y89	305	0	2	5	35	68	61	46	37	19	21	11
Accidents	59	V01-X59	171	0	2	4	20	32	33	17	26	10	18	9
<i>of which: Transport accidents</i>	60	V01-V99	41	0	1	4	10	10	8	0	2	3	3	0
Accidental falls	61	W00-W19	33	0	0	0	0	0	3	1	9	2	11	7
Accidental poisoning	62	X40-X49	63	0	0	0	8	19	19	7	6	2	2	0
<i>other accidents</i>			34	0	1	0	2	3	3	9	9	3	2	2
Suicide and intentional self harm	63	X60-X84	94	0	0	1	11	27	20	22	6	6	1	0
Homicide/assault	64	X85-Y09	9	0	0	0	0	5	2	0	1	1	0	0
Events of undetermined intent	65	Y10-Y34	25	0	0	0	4	4	6	7	3	0	0	1
All other external causes			6	0	0	0	0	0	0	0	1	2	2	1

¹ Stillbirths not included.

Table 13 Female deaths registered classified by cause and age group

Cause of Death	65 COD Code	ICD-10 Code	Total Females	Age Group										
				Under 1	1-4	5-14	15-24	25-34	35-44	45-54	55-64	65-74	75-84	85 and over
Total Female Deaths	0	A00-Y89	3,373	24	7	7	18	39	67	157	280	495	1,027	1,252
Infectious and parasitic diseases:-	1	A00-B99	31	0	2	0	0	0	0	1	0	5	11	12
Tuberculosis	2	A15-A19,B90	3	0	0	0	0	0	0	0	0	1	1	1
Meningococcal infection	3	A39	0	0	0	0	0	0	0	0	0	0	0	0
AIDS (HIV Disease)	4	B20-B24	0	0	0	0	0	0	0	0	0	0	0	0
Viral Hepatitis	5	B15-B19	0	0	0	0	0	0	0	0	0	0	0	0
Other infectious and parasitic diseases			28	0	2	0	0	0	0	1	0	4	10	11
Neoplasms	6	C00-D48	936	0	2	0	1	8	28	84	147	210	299	157
Malignant Neoplasms of the:-	7	C00-C97	919	0	1	0	1	8	28	84	147	207	295	148
Lip, oral cavity, pharynx	8	C00-C14	5	0	0	0	0	0	0	0	1	1	3	0
Oesophagus	9	C15	36	0	0	0	0	0	0	2	3	9	12	10
Stomach	10	C16	29	0	0	0	0	0	0	0	5	9	8	7
Colon	11	C18	60	0	0	0	0	0	2	3	6	8	25	16
Rectum and anus	12	C19-C21	24	0	0	0	0	0	0	0	5	5	8	6
Liver and the intrahepatic bile ducts	13	C22	20	0	0	0	0	0	1	0	5	1	11	2
Pancreas	14	C25	70	0	0	0	0	0	2	5	7	15	29	12
Larynx and trachea/bronchus /lung	15	C32-C34	168	0	0	0	0	0	0	12	31	45	65	15
Skin	16	C43	9	0	0	0	0	0	3	0	1	2	2	1
Breast	17	C50	158	0	0	0	0	0	8	30	31	44	28	17
Cervix uteri	18	C53	21	0	0	0	0	1	4	6	4	4	1	1
Other parts of uterus	19	C54-C55	22	0	0	0	0	0	0	2	5	3	7	5
Ovary	20	C56	56	0	0	0	0	0	1	8	13	11	20	3
Prostate	21	C61	0	0	0	0	0	0	0	0	0	0	0	0
Kidney	22	C64	16	0	0	0	0	1	0	1	1	5	5	3
Bladder	23	C67	16	0	0	0	0	0	0	2	1	2	7	4
Lymph/haematopoietic tissue	24	C81-C96	66	0	0	0	0	1	2	4	5	12	27	15
Other malignant neoplasms			143	0	1	0	1	5	5	9	23	31	37	31
Diseases of the blood and blood-forming organs, immunological disorders	25	D50-D89	9	0	0	0	0	1	0	0	0	1	3	4
Endocrine, Nutritional and metabolic diseases	26	E00-E90	70	0	0	1	3	4	1	2	2	12	19	26
Diabetes mellitus	27	E10-E14	44	0	0	0	1	1	0	0	2	8	13	19
Mental and behavioural disorders	28	F00-F99	87	0	0	0	0	0	0	0	2	8	15	62
Diseases of the nervous system and the sense organs	31	G00-H95	124	0	0	1	1	2	4	4	16	13	44	39
Meningitis	32	G00-G03	0	0	0	0	0	0	0	0	0	0	0	0
Diseases of the Circulatory System:-	33	I00-I99	1,183	0	0	0	0	4	5	25	65	129	368	587
Ischaemic heart disease	34	I20-I25	540	0	0	0	0	3	0	7	39	64	167	260
<i>of which: (Acute myocardial infarction)</i>		<i>I21</i>	<i>251</i>	<i>0</i>	<i>0</i>	<i>0</i>	<i>0</i>	<i>0</i>	<i>0</i>	<i>1</i>	<i>12</i>	<i>31</i>	<i>89</i>	<i>118</i>
Other heart disease	35	I30-I33,I39-I52	172	0	0	0	0	0	2	3	4	12	51	100
Cerebrovascular disease	36	I60-I69	292	0	0	0	0	1	1	8	11	30	93	148
Other diseases of circulatory system			179	0	0	0	0	0	2	7	11	23	57	79

Diseases of the Respiratory system	37	J00-J99	449	0	0	0	1	1	1	7	16	62	144	217
Influenza	38	J10-J11	0	0	0	0	0	0	0	0	0	0	0	0
Pneumonia	39	J12-J19	200	0	0	0	0	0	1	1	6	20	53	119
Chronic Lower respiratory disease	40	J40-J47	171	0	0	0	1	0	0	4	6	33	66	61
<i>of which: Asthma</i>	41	J45-J46	5	0	0	0	1	0	0	1	1	0	1	1
Other diseases of the respiratory system			78	0	0	0	0	1	0	2	4	9	25	37
Diseases of the Digestive system	42	K00-K93	151	0	0	0	0	2	4	13	11	24	48	49
Ulcer of stomach, duodenum and jejunum	43	K25-K28	10	0	0	0	0	0	0	2	1	0	3	4
Chronic liver disease	44	K70,K73-K74	27	0	0	0	0	0	4	9	6	2	5	1
Other diseases of the digestive system			114	0	0	0	0	2	0	2	4	22	40	44
Diseases of the skin and subcutaneous tissue	45	L00-L99	8	0	0	0	0	0	0	0	1	2	4	1
Diseases of the musculoskeletal system/connective tissue	46	M00-M99	38	0	0	0	0	0	0	1	4	9	11	13
Rheumatoid arthritis and osteoarthritis	47	M05-M06,M15-M19	14	0	0	0	0	0	0	0	1	4	4	5
Diseases of the genitourinary system	48	N00-N99	106	0	0	0	0	0	4	1	1	6	33	61
Diseases of the kidney and ureter	49	N00-N29	72	0	0	0	0	0	3	1	0	5	19	44
Complications of pregnancy, childbirth and puerperium	50	O00-O99	1	0	0	0	0	1	0	0	0	0	0	0
Certain conditions originating in the perinatal period¹	51	P00-P96	7	7	0	0	0	0	0	0	0	0	0	0
Congenital malformations and chromosomal abnormalities	52	Q00-Q99	25	13	2	2	1	1	3	1	0	0	2	0
Congenital malformations of the:-														
Nervous system	53	Q00-Q07	3	1	1	1	0	0	0	0	0	0	0	0
Circulatory system	54	Q20-Q28	9	5	0	0	1	0	3	0	0	0	0	0
Symptoms, signs, abnormal findings, ill-defined causes	55	R00-R99	12	3	0	0	0	0	2	0	0	0	2	5
Sudden infant death syndrome	56	R95	3	3	0	0	0	0	0	0	0	0	0	0
Unknown and unspecified causes	57	R96-R99	3	0	0	0	0	0	2	0	0	0	0	1
External causes of injury and poisoning	58	V01-Y89	136	1	1	3	11	15	15	18	15	14	24	19
Accidents	59	V01-X59	95	1	1	1	6	9	5	11	11	8	23	19
<i>of which: Transport accidents</i>	60	V01-V99	18	1	0	1	5	0	0	2	2	3	4	0
Accidental falls	61	W00-W19	35	0	0	0	0	2	2	2	1	3	16	9
Accidental poisoning	62	X40-X49	21	0	0	0	1	6	1	3	7	1	2	0
<i>other accidents</i>			21	0	1	0	0	1	2	4	1	1	1	10
Suicide and intentional self harm	63	X60-X84	28	0	0	0	4	6	7	4	2	4	1	0
Homicide/assault	64	X85-Y09	6	0	0	2	0	0	2	1	1	0	0	0
Events of undetermined intent	65	Y10-Y34	6	0	0	0	1	0	1	2	1	1	0	0
All other external causes			1	0	0	0	0	0	0	0	0	1	0	0

¹ Stillbirths not included.

Table 14 Infant and neonatal mortality by area of residence of deceased

Area of residence	Infant mortality		Neonatal mortality	
	Number	Rate	Number	Rate
STATE	52	2.8	41	2.2
LEINSTER	32	3.0	26	2.5
Carlow	1	3.8	1	3.8
Dublin City	5	2.6	4	2.1
South Dublin	3	2.5	1	0.8
Fingal	2	1.4	2	1.4
Dun Laoghaire Rathdown	4	5.6	2	2.8
Kildare	1	1.0	1	1.0
Kilkenny	2	5.6	2	5.6
Laois	2	5.8	2	5.8
Longford	0	0.0	0	0.0
Louth	0	0.0	0	0.0
Meath	3	3.3	3	3.3
Offaly	1	3.3	1	3.3
Westmeath	2	5.7	2	5.7
Wexford	3	4.8	2	3.2
Wicklow	3	4.9	3	4.9
MUNSTER	14	2.7	9	1.8
Clare	2	4.2	2	4.2
Cork City	1	1.9	1	1.9
Cork County	3	1.8	1	0.6
Kerry	2	3.5	2	3.5
Limerick City	0	0.0	0	0.0
Limerick County	2	3.4	2	3.4
North Tipperary	0	0.0	0	0.0
South Tipperary	3	8.8	0	0.0
Waterford City	1	5.6	1	5.6
Waterford County	0	0.0	0	0.0
CONNACHT	3	1.4	3	1.4
Galway City	0	0.0	0	0.0
Galway County	1	1.3	1	1.3
Leitrim	0	0.0	0	0.0
Mayo	1	2.2	1	2.2
Roscommon	1	4.6	1	4.6
Sligo	0	0.0	0	0.0
ULSTER (PART OF)	3	2.8	3	2.8
Cavan	0	0.0	0	0.0
Donegal	3	5.0	3	5.0
Monaghan	0	0.0	0	0.0
REGIONAL AUTHORITIES:				
Border	3	1.6	4	2.1
Midland	5	4.3	1	0.9
West	3	1.7	4	2.3
Dublin	14	2.7	10	1.9
Mid-East	7	2.8	8	3.2
Mid-West	4	2.6	6	3.8
South-East	10	4.9	3	1.5
South-West	6	2.2	5	1.8

Infant mortality rates: Deaths of infants under one year per 1,000 live births, classified by area of residence of mother.

Neonatal mortality rates: Deaths of infants under 28 days per 1,000 live births, classified by area of residence of mother.

Infant and neonatal mortality rates in some areas, based on small numbers are subject to considerable fluctuation and caution should be exercised in their interpretation.

Appendix

Glossary of terms

NUTS III Regional Authority areas

Border, Midland, West, Dublin, Mid-East, Mid-West, South-East, South-West

Border: Cavan, Donegal, Leitrim, Louth, Monaghan, Sligo.

Midland: Laois, Longford, Offaly, Westmeath.

West: Galway City, Galway County, Mayo, Roscommon.

Dublin: Dublin City, South Dublin, Fingal, Dun Laoghaire-Rathdown.

Mid-East: Kildare, Meath, Wicklow.

Mid-West: Clare, Limerick City, Limerick County, North Tipperary.

South-East: Carlow, Kilkenny, South Tipperary, Waterford City, Waterford County, Wexford.

South-West: Cork City, Cork County, Kerry.

Causes of death Eurostat shortlist (August 1998)

Nr	Disease or external cause	ICD-9 Code	ICD-10 Code
00	All causes of death	001-E999	A00-Y89
01	Infectious and Parasitic Diseases:-	001-139,279.8	A00-B99
02	Tuberculosis	010-018,137	A15-A19,B90
03	Meningococcal Infection	036	A39
04	AIDS (HIV Disease)	042-044,279.8	B20-B24
05	Viral Hepatitis	070	B15-B19
	other Infectious and Parasitic Diseases	Rem (001-139)	Rem (A00-B99)
06	Neoplasms	140-239	C00-D48
07	Malignant Neoplasms of the:-	140-208	C00-C97
08	Lip, Oral Cavity, Pharynx	140-149	C00-C14
09	Oesophagus	150	C15
10	Stomach	151	C16
11	Colon	153	C18
12	Rectum and Anus	154	C19-C20-C21
13	Liver and the Intrahepatic Bile Ducts	155	C22
14	Pancreas	157	C25
15	Larynx and Trachea/Bronchus/Lung	161-162	C32-C34
16	Skin	172	C43
17	Breast	174-175	C50
18	Cervix Uteri	180	C53
19	Other Parts of the Uterus	179,182	C54-C55
20	Ovary	183.0	C56
21	Prostate	185	C61
22	Kidney	189.0	C64
23	Bladder	188	C67
24	Lymph/Haematopoietic Tissue	200-208	C81-C96
	other Malignant Neoplasms	Rem (140-208)	Rem. (C00-C97)
25	Diseases of the Blood and Blood-forming Organs, Immunological disorders ¹	279-289	D50-D89
26	Endocrine, Nutritional and Metabolic Diseases	240-278	E00-E90
27	Diabetes Mellitus	250	E10-E14
28	Mental and Behavioural Disorders	290-319	F00-F99
29	Alcohol abuse (including Alcoholic Psychosis)	291,303	F10
30	Drug Dependence, Toxicomania	304-305	F11-F16,F18-F19
31	Diseases of the Nervous System and the Sense Organs	320-389	G00-H95
32	Meningitis	320-322	G00-G03
33	Diseases of the Circulatory System:-	390-459	I00-I99
34	Ischaemic Heart Disease	410-414	I20-I25
	<i>(Acute Myocardial Infarction)</i>	410	I21
35	Other Heart Disease	420-423,425-429	I30-I33,I39-I52
36	Cerebrovascular Disease	430-438	I60-I69
	other Diseases of the Circulatory System	Rem (390-459)	Rem. (I00-I99)
37	Diseases of the Respiratory System	460-519	J00-J99
38	Influenza	487	J10-J11
39	Pneumonia	480-486	J12-J18
40	Chronic Lower Respiratory Disease	490-494,496	J40-J47
41	Asthma	493	J45-J46
	other Diseases of the Respiratory System	Rem (460-519)	Rem. (J00-J99)
42	Diseases of the Digestive System	520-579	K00-K93
43	Ulcer of Stomach, Duodenum and Jejunum	531-534	K25-K28
44	Chronic Liver Disease	571.0-571.9	K70,K73-K74
	other Diseases of the Digestive System	Rem (520-579)	Rem. (K00-K93)
45	Diseases of the Skin and Subcutaneous Tissue	680-709	L00-L99
46	Diseases of the Musculoskeletal System/Connective Tissue	710-739	M00-M99
47	Rheumatoid Arthritis and Osteoarthritis	714-715	M05-M06,M15-M19
48	Diseases of the Genitourinary System	580-629	N00-N99
49	Diseases of the Kidney and Ureter	580-594	N00-N29
50	Complications of Pregnancy, Childbirth and Puerperium	630-676	O00-O99
51	Certain Conditions Originating in the Perinatal Period (stillbirths not included)	760-779	P00-P96
52	Congenital Malformations and Chromosomal Abnormalities	740-759	Q00-Q99
53	Congenital malformations of the Nervous System	740-742	Q00-Q07
54	Congenital malformations of the Circulatory System	745-747	Q20-Q28
55	Symptoms, Signs, Abnormal Findings, Ill-defined Causes	780-799	R00-R99
56	Sudden Infant Death Syndrome	798.0	R95
57	Unknown and Unspecified Causes	798.1-9,799	R96-R99
	Injury and Poisoning	800-999	S00-T98
58	External Causes of Injury and Poisoning (included in the Foregoing)	E800-E999	V01-Y89
59	Accidents	E800-E929	V01-X59
60	Transport Accidents	E800-E848	V01-V99
	Road transport Accidents	E810-E829, E929.0	V01-V80,V87,V89,Y85
	Motor vehicle transport Accidents	E810-E819	
61	Accidental Falls	E880-E888	W00-W19
62	Accidental Poisoning	E850-E869	X40-X49
	other accidents	Rem (E800-E929)	Rem (V01-X59)
63	Suicide and Intentional Self Harm	E950-E959	X60-X84
64	Homicide/Assault	E960-E969	X85-Y09
65	Cause Undetermined	E980-E989	Y10-Y34
	other External Causes	Rem (E930-E999)	

¹ 279.8 not included

Estimated Population classified by Sex and Age Group, 2004 - 2009*thousands*

Sex and Age Group	Persons in April of each year					
	2004	2005	2006 ¹	2007 ²	2008 ²	2009 ²
Total Persons	4,045.2	4,133.8	4,239.8	4,339.0	4,422.1	4,459.3
0 - 4 years	290.7	296.5	302.3	312.3	327.9	341.6
5 - 9 "	274.9	280.6	288.3	295.9	303.4	308.0
10 - 14 "	278.2	276.3	273.9	275.6	281.0	288.1
15 - 19 "	298.4	292.8	290.3	286.0	283.9	278.6
20 - 24 "	336.1	339.5	342.5	347.8	334.0	304.8
25 - 29 "	325.4	345.2	373.1	405.1	416.7	413.4
30 - 34 "	325.1	335.8	349.4	358.0	366.9	371.4
35 - 39 "	303.5	312.1	322.1	331.7	342.1	348.0
40 - 44 "	286.0	294.1	301.3	305.8	310.2	312.5
45 - 49 "	259.2	265.4	274.7	279.8	286.1	293.5
50 - 54 "	238.1	243.1	247.1	252.6	257.2	261.7
55 - 59 "	213.9	221.4	225.3	227.4	232.0	235.4
60 - 64 "	166.0	172.1	181.7	190.5	199.2	207.5
65 - 69 "	137.5	140.8	143.4	143.5	148.8	155.3
70 - 74 "	115.7	117.4	119.2	119.2	120.8	123.2
75 - 79 "	90.0	91.0	92.5	92.1	93.6	95.2
80 - 84 "	63.1	64.0	64.9	65.4	65.2	65.9
85 years and over	43.4	45.7	48.0	50.3	53.2	55.4
Total males	2,011.9	2,061.8	2,121.2	2,171.1	2,206.3	2,217.7
0 - 4 years	148.7	151.7	154.6	160.5	168.2	175.3
5 - 9 "	141.2	144.3	148.0	151.3	154.9	157.6
10 - 14 "	142.8	142.0	140.5	141.3	144.1	147.7
15 - 19 "	152.7	149.8	148.2	145.4	144.6	141.8
20 - 24 "	168.2	170.0	172.8	175.0	165.7	148.6
25 - 29 "	162.9	174.1	189.3	204.7	209.4	204.6
30 - 34 "	161.8	168.7	177.5	182.6	185.3	186.0
35 - 39 "	152.4	157.8	163.8	169.1	174.0	175.6
40 - 44 "	142.5	147.1	151.4	153.6	155.7	157.5
45 - 49 "	129.7	132.9	138.0	140.6	143.4	147.0
50 - 54 "	120.1	122.9	124.6	127.1	129.2	131.5
55 - 59 "	108.5	112.0	113.9	114.9	117.0	118.5
60 - 64 "	83.8	86.7	91.6	96.0	100.4	104.3
65 - 69 "	67.3	69.1	70.9	71.3	73.6	76.9
70 - 74 "	54.6	55.7	56.5	56.6	57.5	58.7
75 - 79 "	37.8	38.8	40.1	40.6	41.8	42.9
80 - 84 "	23.9	24.3	24.7	25.0	25.0	25.9
85 years and over	13.2	14.0	14.8	15.5	16.6	17.5
Total females	2,033.3	2,072.0	2,118.7	2,167.9	2,215.8	2,241.6
0 - 4 years	142.0	144.8	147.7	151.8	159.7	166.4
5 - 9 "	133.8	136.3	140.3	144.6	148.5	150.5
10 - 14 "	135.4	134.4	133.4	134.2	136.9	140.4
15 - 19 "	145.7	143.0	142.0	140.6	139.3	136.8
20 - 24 "	167.9	169.5	169.7	172.8	168.3	156.1
25 - 29 "	162.5	171.1	183.8	200.4	207.3	208.8
30 - 34 "	163.4	167.0	171.9	175.3	181.6	185.4
35 - 39 "	151.1	154.4	158.3	162.5	168.1	172.4
40 - 44 "	143.5	147.1	149.9	152.2	154.5	155.0
45 - 49 "	129.6	132.6	136.8	139.3	142.8	146.5
50 - 54 "	118.0	120.2	122.5	125.5	128.0	130.2
55 - 59 "	105.4	109.4	111.4	112.5	115.0	116.9
60 - 64 "	82.2	85.4	90.2	94.6	98.8	103.2
65 - 69 "	70.2	71.7	72.5	72.2	75.2	78.4
70 - 74 "	61.1	61.7	62.6	62.6	63.3	64.5
75 - 79 "	52.2	52.2	52.3	51.5	51.8	52.4
80 - 84 "	39.2	39.7	40.2	40.4	40.1	40.0
85 years and over	30.2	31.7	33.2	34.8	36.6	37.9

¹ De Facto² Preliminary