



**Central Statistics Office**  
An Phríomh-Oifig Staidrimh

# **Vital Statistics**

## **Second Quarter**

### **2008**

Published by the Stationery Office, Dublin, Ireland.

To be purchased from the:

Central Statistics Office, Information Section, Skehard Road, Cork,

Government Publications Sales Office, Sun Alliance House,  
Molesworth Street, Dublin 2,

or through any bookseller.

Compiled by the Central Statistics Office on behalf of the Department of  
Health and Children.

[No. 577]

Price €6.00

March 2009

© Government of Ireland 2009

Material compiled and presented by  
Central Statistics Office.

Reproduction is authorised, except for commercial  
purposes, provided the source is acknowledged.

ISSN 0790-7710

ISBN 978-1-4064-2085-2

# Contents

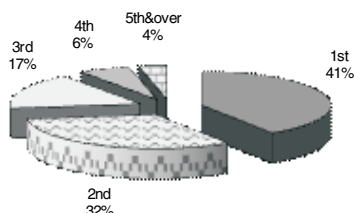
## Second Quarter 2008

	<b>Page</b>
<b>Commentary</b>	4
<b>Tables</b>	
Table 1	Marriages, births, deaths and natural increase 8
Table 2	Annual marriage, birth, death and natural increase rates per 1,000 population 9
Table 3	Births registered, classified by area of residence of mother 10
Table 4	Births registered, classified by age of mother and previous number of liveborn children 11
Table 5	Number and percentage of births within and outside marriage, classified by age of mother 12
Table 6	Number and percentage of births registered within and outside marriage, classified by area of residence of mother 13
Table 7	Births registered, classified by area of residence and age of mother 14
Table 8	Births registered outside marriage, classified by area of residence and age of mother 15
Table 9	Deaths registered by county of residence of deceased 16
Table 10	Deaths registered by cause of death and county of residence of deceased 17
Table 11	Deaths registered classified by cause and age group 18
Table 12	Male deaths registered, classified by cause and age group 20
Table 13	Female deaths registered classified by cause and age group 22
Table 14	Infant and neonatal mortality by area of residence of deceased 24
<b>Appendix</b>	
	Glossary of terms 26
	Causes of death Eurostat shortlist (August 1998) 27
	Estimated population classified by sex and age group, 2003-2008 28

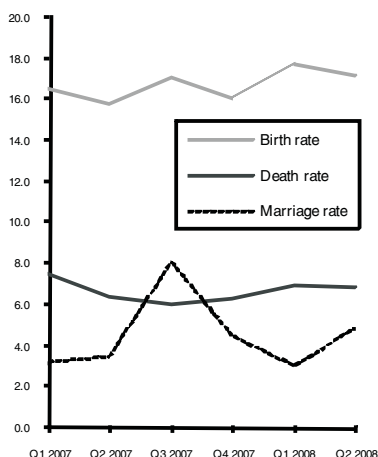
## Second Quarter 2008

### Commentary

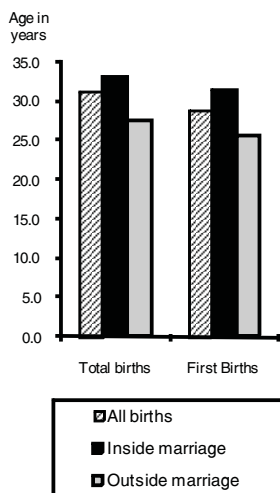
**Birth Order Q2 2008**



**Annual birth, death and marriage rates per 1,000 population**



**Average age at maternity Q2 2008**



#### Introduction

This report has been prepared by the Central Statistics Office for the Minister for Health and Children in accordance with the provisions of Section 2 of the Vital Statistics and Births, Deaths and Marriages Registration Act, 1952 and Section 73 of the Civil Registration Act 2004.

The extension of the Limerick City boundary, which came into operation on 1st March 2008, has been taken into account in the compilation of these statistics. As a result, data for Limerick City and County are not directly comparable with previous quarters.

#### Births

There were 19,027 births registered in quarter 2 of 2008, 9,777 males and 9,250 females, an increase of 1,900 on the quarter 2 figure of 2007. The quarter 2 2008 total is 40% higher than in 1999 when 13,585 babies were registered. See tables 1 and 3.

This represents an annual birth rate of 17.2 per 1,000 of the population, 1.4 above quarter 2 of 2007. This rate is 2.7 per 1,000 population higher than in 1999. See table 2.

#### Birth order

A total of 7,711 births (40.8%) were to first time mothers in quarter 2 of 2008. This compares to 5,299 (39.2%) first births registered in quarter 2 1999. Nearly one third of all births (32.1% or 6,057) were to second time mothers. See table 4.

#### Age of mothers

The average age of mothers for births registered in quarter 2 2008 was 31.2 years, the same as the corresponding figure in quarter 2 2007, and 1 year more than in quarter 2 1999. The average age of mothers having their first child in quarter 2 2008 was 28.9 years. See tables 1 and 7.

#### Births outside marriage

There were 6,171 births registered as outside marriage in quarter 2 of 2008. This accounted for 32.4% of all births in quarter 2 of 2008. This compares to 31.7% of births registered as outside marriage in quarter 2 2007. The highest percentage of births outside marriage occurred in Limerick City at 54%, while the lowest percentage was in Galway County at 20%. In quarter 2 1999, 4,053 births were registered outside marriage or 29.8% of all births. See table 6.

#### Deaths

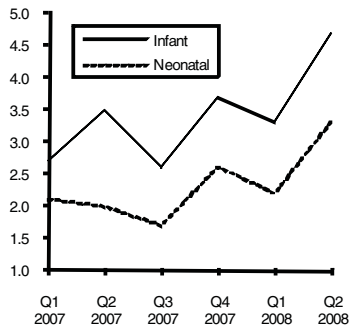
There were 7,570 deaths registered in quarter 2 2008, 3,846 males and 3,724 females. This represents an annual death rate of 6.8 per 1,000 population. See tables 1 and 9.

#### Age at death

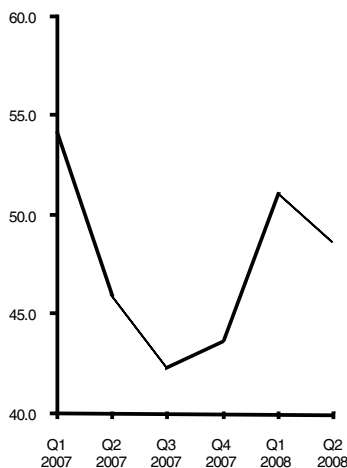
There were 90 infant deaths registered in quarter 2 2008 giving an infant mortality rate of 4.7 deaths per 1,000 live births. Neonatal deaths are deaths of infants at ages under 4 weeks. There were 62 neonatal deaths registered in quarter 2 2008, a neonatal mortality rate of 3.3 deaths per 1,000 live births. See tables 1 and 2.

There were 5,851 deaths of persons aged 65 and over registered in quarter 2 2008. This represents an annual death rate of 48.6 per 1,000 population aged 65 and over. *See tables 1 and 2.*

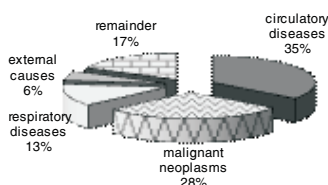
**Infant and neonatal mortality rates per 1,000 live births**



**Death rates for ages 65 & over per 1,000 relevant population**



**Principal causes of death Q2 2008**



### Cause of death

- **Diseases of the Circulatory System:**

Diseases of the Circulatory System accounted for 2,673 deaths, or an annual rate of 2.4 per 1,000 population. Of these, 1,419 were due to Ischaemic Heart Disease and 558 to Cerebrovascular Disease. *See table 11.*

- **Malignant Neoplasms:**

There were 2,137 deaths from malignant neoplasms. This is equivalent to an annual rate of 1.9 per 1,000 population. *See table 11.*

- **Diseases of the Respiratory System:**

Deaths from pneumonia numbered 397; chronic lower respiratory disease accounted for 382 deaths and 221 deaths resulted from other respiratory diseases. *See table 11.*

### Marriages

The number of marriages registered during the quarter was 5,370 equivalent to an annual marriage rate of 4.9 per 1,000 population, 0.2 below the corresponding quarter of 2007. The quarter 2 2008 total is 17% higher than in quarter 2 1999 when 4,577 marriages were registered. *See tables 1 and 2.*

### Population

The estimated population in April 2008 was 4,422,100.

### Methodology

All figures in this report are classified by quarter of registration. Delay in the registration of some births, deaths and marriages result in them being included in a later period in these quarterly reports.

### Changes in methodology (Deaths)

This publication continues with the 3 major changes in the methods by which mortality statistics are compiled. These changes were introduced in the Vital Statistics First Quarter 2007 publication.

- 1) Underlying Cause of Death is classified according to International Classification of Diseases, Version 10 (ICD10) instead of to International Classification of Diseases, Version 9 (ICD9).
- 2) Deaths where there was not an inquest have been coded using the automated coding system developed by the U.S National Centre for Health Statistics (NCHS). Previously the Underlying Cause of Death was chosen manually for all deaths.
- 3) All deaths registered in the Quarter have been included in the statistics, in some cases with a provisional cause of death. Previously the practice was not to include deaths in the quarterly statistics until the cause of death had been definitely established.

Because of these changes, caution should be taken in directly comparing these mortality statistics with those of previous quarters. Many countries have found that moving to ICD10 does affect certain specific categories of causes of death. In particular, a significant drop in the number of deaths attributed to pneumonia and bronchopneumonia has been observed in some countries after moving to ICD10. These deaths were instead assigned to other conditions included on the death certificate.

The effect of the third change above has been to increase the number of deaths in our statistics as compared with previous years. Statistics for deaths due to external causes are particularly affected by this change. The previous method meant that some deaths were included in a later quarter of the year from when they had been registered, because of the delay involved in establishing a definite cause of death.

To aid comparability, we are currently completing a Bridge Coding study based on deaths registered in 2005. In this study, deaths that were previously coded in ICD9 using manual coding are being recoded independently in ICD10 using the automated system. The resulting differences in the number of deaths assigned to specific causes using the respective methods will give us a good insight into the effect of these changes on future mortality statistics. This study will be published in 2009.

## **Tables**

**Table 1 Marriages, births, deaths and natural increase**

	Marriages <sup>1</sup>	Live Births				Deaths				Natural Increase
		Total	First	Outside marriage	Average Age	Total	Infant	Neonatal	65 & over	
<b>Quarter 1</b>										
1999	2,064	13,388	5,491	4,275	30.0	9,867	80	61	8,104	3,521
2000	2,200	13,984	5,693	4,656	30.0	9,804	86	59	8,062	4,180
2001	2,168	14,785	5,963	4,877	30.1	8,408	81	56	6,747	6,377
2002	2,484	14,972	6,127	4,877	30.3	7,749	73	51	6,281	7,223
2003	2,571	15,238	6,158	5,080	30.3	7,756	67	52	6,259	7,482
2004	2,676	15,599	6,082	5,181	30.7	7,873	72	56	6,347	7,726
2005	2,892	15,334	6,290	5,147	30.9	7,352	65	47	5,920	7,982
2006	3,267	15,958	6,449	5,481	30.9	7,320	56	36	6,040	8,638
2007	3,399	17,473	7,226	5,905	31.1	7,910 <sup>2</sup>	48	37	6,326	9,563
2008	3,241	19,146	8,086	6,479	31.1	7,531	63	42	6,016	11,615
<b>Quarter 2</b>										
1999	4,577	13,585	5,299	4,053	30.2	7,777	79	55	6,155	5,808
2000	4,670	13,794	5,427	4,260	30.3	7,650	77	52	5,974	6,144
2001	4,533	14,303	5,615	4,307	30.5	7,260	74	55	5,808	7,043
2002	4,810	15,247	5,858	4,672	30.5	7,680	91	64	6,074	7,567
2003	4,827	15,582	6,095	4,689	30.6	7,203	83	59	5,625	8,379
2004	4,719	15,535	5,897	4,874	30.8	6,881	74	53	5,351	8,654
2005	5,374	15,306	5,922	4,810	31.1	7,349	70	52	5,826	7,957
2006	5,094	15,979	6,315	5,056	31.1	6,967	65	44	5,488	9,012
2007	5,536	17,127	6,926	5,428	31.2	6,902 <sup>2</sup>	60	34	5,394	10,225
2008	5,370	19,027	7,711	6,171	31.2	7,570	90	62	5,851	11,457
<b>Quarter 3</b>										
1999	7,342	13,840	5,635	4,323	30.0	6,645	70	44	5,218	7,195
2000	7,593	13,967	5,641	4,451	30.2	6,832	89	54	5,372	7,135
2001	7,557	14,688	5,901	4,472	30.3	6,974	97	67	5,403	7,714
2002	7,580	15,593	6,333	4,855	30.4	6,941	68	50	5,391	8,652
2003	7,996	15,909	6,240	4,981	30.6	6,639	85	68	5,147	9,270
2004	8,168	15,605	6,171	5,100	30.8	6,473	72	43	5,123	9,132
2005	8,347	16,170	6,548	5,101	30.9	6,380	50	33	4,919	9,790
2006	8,341	16,920	6,891	5,541	31.0	6,657	58	46	5,146	10,263
2007	8,733	18,554	7,636	6,019	31.1	6,455 <sup>2</sup>	48	32	4,976	12,099
2008										
<b>Quarter 4</b>										
1999	4,543	12,541	5,139	3,810	30.2	7,394	64	48	5,815	5,147
2000	4,705	12,494	5,236	3,868	30.2	6,829	70	53	5,324	5,665
2001	4,988	14,106	5,915	4,393	30.3	7,170	85	57	5,422	6,936
2002	5,682	14,709	5,989	4,411	30.5	6,978	74	49	5,378	7,731
2003	4,908	14,788	5,883	4,563	30.7	7,225	76	52	5,568	7,563
2004	5,056	14,945	5,975	4,783	30.9	6,924	82	62	5,253	8,021
2005	4,742	14,232	5,861	4,470	31.1	6,360	59	45	4,827	7,872
2006	5,139	15,380	6,456	5,217	31.0	6,535	58	42	4,946	8,845
2007	4,876	17,466	7,481	5,818	31.1	6,783 <sup>2</sup>	65	46	5,128	10,683
2008										
<b>Total</b>										
1999	18,526	53,354	21,564	16,461	30.1	31,683	293	208	25,292	21,671
2000	19,168	54,239	21,997	17,235	30.2	31,115	322	218	24,732	23,124
2001	19,246	57,882	23,394	18,049	30.3	29,812	337	235	23,380	28,070
2002	20,556	60,521	24,307	18,815	30.4	29,348	306	214	23,124	31,173
2003	20,302	61,517	24,376	19,313	30.6	28,823	311	231	22,599	32,694
2004	20,619	61,684	24,125	19,938	30.8	28,151	300	214	22,074	33,533
2005	21,355	61,042	24,621	19,528	31.0	27,441	244	177	21,492	33,601
2006	21,841	64,237	26,111	21,295	31.0	27,479	237	168	21,620	36,758
2007	22,544	70,620	29,269	23,170	31.1	28,050	221	149	21,824	42,570
2008										

<sup>1</sup> 2002 and 2005 marriage figures are final. All other marriage figures are subject to revision.<sup>2</sup> Not directly comparable with previous quarters. See 'Commentary' for changes in methodology.



**Table 2 Annual marriage, birth, death and natural increase rates per 1,000 population**

	Marriages	Live Births			Deaths				Natural Increase
		Total	% First births <sup>1</sup>	% Outside marriage	Total	Infant Mortality <sup>2</sup>	Neonatal Mortality <sup>3</sup>	65 & over	
<b>Quarter 1</b>									
1999	2.2	14.5	41.1	31.9	10.7	6.0	4.6	77.1	3.8
2000	2.4	14.9	40.9	33.3	10.5	6.1	4.2	76.4	4.5
2001	2.3	15.6	40.5	33.0	8.9	5.5	3.8	63.5	6.7
2002	2.6	15.6	41.2	32.6	8.1	4.9	3.4	58.5	7.5
2003	2.6	15.6	40.7	33.3	7.9	4.4	3.4	57.4	7.6
2004	2.7	15.7	40.4	33.2	7.9	4.6	3.6	57.3	7.8
2005	2.9	15.2	41.3	33.6	7.3	4.2	3.1	52.5	7.9
2006	3.2	15.5	41.1	34.3	7.1	3.5	2.3	52.4	8.4
2007	3.2	16.5	42.2	33.8	7.5	2.7	2.1	54.1	9.0
2008	3.0	17.7	42.6	33.8	6.9	3.3	2.2	51.1	10.7
<b>Quarter 2</b>									
1999	4.9	14.5	39.2	29.8	8.3	5.8	4.0	58.4	6.2
2000	4.9	14.6	39.5	30.9	8.1	5.6	3.8	56.3	6.5
2001	4.7	14.9	39.5	30.1	7.5	5.2	3.8	54.1	7.3
2002	4.9	15.6	38.8	30.6	7.8	6.0	4.2	55.7	7.7
2003	4.9	15.7	39.5	30.1	7.2	5.3	3.8	50.8	8.4
2004	4.7	15.4	38.8	31.4	6.8	4.8	3.4	47.5	8.6
2005	5.2	14.8	38.8	31.4	7.1	4.6	3.4	50.6	7.7
2006	4.8	15.1	41.1	31.6	6.6	4.1	2.8	46.9	8.5
2007	5.1	15.8	40.9	31.7	6.4	3.5	2.0	45.9	9.4
2008	4.9	17.2	40.8	32.4	6.8	4.7	3.3	48.6	10.4
<b>Quarter 3</b>									
1999	7.8	14.8	40.9	31.2	7.1	5.1	3.2	49.5	7.7
2000	8.0	14.7	40.6	31.9	7.2	6.4	3.9	50.6	7.5
2001	7.9	15.3	40.4	30.4	7.3	6.6	4.6	50.3	8.0
2002	7.7	15.9	41.0	31.1	7.1	4.4	3.2	49.5	8.8
2003	8.0	16.0	39.6	31.3	6.7	5.3	4.3	46.5	9.3
2004	8.1	15.4	39.8	32.7	6.4	4.6	2.8	45.4	9.0
2005	8.1	15.7	40.7	31.5	6.2	3.1	2.0	42.7	9.5
2006	7.9	16.0	41.6	32.7	6.3	3.4	2.7	44.0	9.7
2007	8.1	17.1	41.4	32.4	6.0	2.6	1.7	42.3	11.2
2008									
<b>Quarter 4</b>									
1999	4.9	13.4	41.1	30.4	7.9	5.1	3.8	55.1	5.5
2000	5.0	13.2	42.1	31.0	7.2	5.6	4.2	50.1	6.0
2001	5.2	14.7	42.2	31.1	7.5	6.0	4.0	50.5	7.2
2002	5.8	15.0	41.2	30.0	7.1	5.0	3.3	49.3	7.9
2003	4.9	14.9	40.9	30.9	7.3	5.1	3.5	50.3	7.6
2004	5.0	14.8	40.3	32.0	6.8	5.5	4.1	46.6	7.9
2005	4.6	13.8	41.4	31.4	6.2	4.1	3.2	41.9	7.6
2006	4.8	14.5	42.3	33.9	6.2	3.8	2.7	42.3	8.3
2007	4.5	16.1	43.2	33.3	6.3	3.7	2.6	43.6	9.8
2008									
<b>Total</b>									
1999	5.0	14.3	40.6	30.9	8.5	5.5	3.9	59.9	5.8
2000	5.1	14.3	40.8	31.8	8.2	5.9	4.0	58.2	6.1
2001	5.0	15.0	40.7	31.2	7.7	5.8	4.1	54.4	7.3
2002	5.2	15.5	40.5	31.1	7.5	5.1	3.5	53.0	8.0
2003	5.1	15.5	40.2	31.4	7.2	5.1	3.8	51.0	8.2
2004	5.1	15.3	39.8	32.3	7.0	4.9	3.5	49.0	8.3
2005	5.2	14.8	40.5	32.0	6.6	4.0	2.9	46.7	8.1
2006	5.2	15.2	41.5	33.2	6.5	3.7	2.6	46.2	8.7
2007	5.2	16.3	41.9	32.8	6.5	3.1	2.1	46.4	9.8
2008									

<sup>1</sup> First births divided by the total number of live births (excluding those with unstated parity), multiplied by 100.<sup>2</sup> Infant mortality is the number of infant deaths per 1,000 live births.<sup>3</sup> Neonatal mortality is the number of neonatal (infants aged under 4 weeks) deaths per 1,000 live births.

**Table 3 Births registered, classified by area of residence of mother**

	Total	Male	Female	Rate <sup>1</sup>
<b>STATE</b>	<b>19,027</b>	<b>9,777</b>	<b>9,250</b>	<b>17.2</b>
<b>LEINSTER</b>	<b>10,504</b>	<b>5,398</b>	<b>5,106</b>	<b>17.6</b>
Carlow	263	136	127	20.0
Dublin City	1,888	1,002	886	14.3
South Dublin	1,125	553	572	17.5
Fingal	1,384	682	702	22.1
Dun Laoghaire Rathdown	707	365	342	14.0
Kildare	1,009	532	477	20.8
Kilkenny	336	191	145	14.7
Laois	350	184	166	20.0
Longford	180	90	90	20.1
Louth	429	224	205	14.8
Meath	826	412	414	19.5
Offaly	359	192	167	19.4
Westmeath	384	173	211	18.6
Wexford	658	332	326	19.2
Wicklow	606	330	276	18.4
<b>MUNSTER</b>	<b>5,061</b>	<b>2,613</b>	<b>2,448</b>	<b>16.5</b>
Clare	452	238	214	15.6
Cork City	466	234	232	15.0
Cork County	1,673	838	835	17.7
Kerry	534	278	256	14.6
Limerick City	229	123	106	14.7
Limerick County	564	312	252	17.4
North Tipperary	325	169	156	18.9
South Tipperary	312	156	156	14.4
Waterford City	214	115	99	17.9
Waterford County	292	150	142	18.0
<b>CONNACHT</b>	<b>2,266</b>	<b>1,139</b>	<b>1,127</b>	<b>17.2</b>
Galway City	271	134	137	14.4
Galway County	820	405	415	19.7
Leitrim	140	67	73	18.5
Mayo	524	261	263	16.2
Roscommon	242	134	108	15.8
Sligo	269	138	131	16.9
<b>ULSTER (PART OF)</b>	<b>1,196</b>	<b>627</b>	<b>569</b>	<b>17.2</b>
Cavan	350	187	163	21.0
Donegal	605	311	294	15.8
Monaghan	241	129	112	16.5
<b>REGIONAL AUTHORITIES:</b>				
Border	2,034	1,056	978	16.5
Midland	1,273	639	634	19.1
West	1,857	934	923	17.4
Dublin	5,104	2,602	2,502	16.8
Mid-East	2,441	1,274	1,167	19.0
Mid-West	1,570	842	728	16.9
South-East	2,075	1,080	995	17.0
South-West	2,673	1,350	1,323	16.6

<sup>1</sup> Births per year per 1,000 population. Annual rates based on estimated 2008 population.

**Table 4 Births registered, classified by age of mother and previous number of liveborn children**

Age of mother at maternity	Previous number of liveborn children							
	Total	0	1	2	3	4	5 or more	Not stated
<b>All ages</b>	<b>19,027</b>	<b>7,711</b>	<b>6,057</b>	<b>3,259</b>	<b>1,211</b>	<b>405</b>	<b>241</b>	<b>143</b>
<b>15 and under</b>	<b>13</b>	<b>11</b>	<b>2</b>	-	-	-	-	-
16	39	38	1	-	-	-	-	-
17	89	82	7	-	-	-	-	-
18	199	179	18	1	-	-	-	1
19	295	260	28	2	1	-	-	4
<b>Under 20</b>	<b>635</b>	<b>570</b>	<b>56</b>	<b>3</b>	<b>1</b>	-	-	<b>5</b>
20	312	253	48	10	-	-	-	1
21	396	298	75	19	1	1	-	2
22	460	303	110	37	7	-	-	3
23	521	311	147	51	6	2	-	4
24	549	314	165	51	12	4	-	3
<b>20-24</b>	<b>2,238</b>	<b>1,479</b>	<b>545</b>	<b>168</b>	<b>26</b>	<b>7</b>	-	<b>13</b>
25	678	346	235	69	14	12	1	1
26	769	407	240	80	29	8	2	3
27	901	446	274	116	34	20	7	4
28	1,061	488	367	123	50	16	3	14
29	1,077	517	351	153	30	14	4	8
<b>25-29</b>	<b>4,486</b>	<b>2,204</b>	<b>1,467</b>	<b>541</b>	<b>157</b>	<b>70</b>	<b>17</b>	<b>30</b>
30	1,249	531	449	160	69	21	11	8
31	1,316	558	444	195	67	27	11	14
32	1,327	485	492	227	70	23	21	9
33	1,333	431	504	267	76	23	15	17
34	1,300	335	499	310	100	28	18	10
<b>30-34</b>	<b>6,525</b>	<b>2,340</b>	<b>2,388</b>	<b>1,159</b>	<b>382</b>	<b>122</b>	<b>76</b>	<b>58</b>
35	1,176	305	408	311	98	20	23	11
36	1,029	228	342	274	127	36	17	5
37	894	189	283	250	111	29	23	9
38	673	123	203	214	83	28	21	1
39	495	93	133	145	79	31	9	5
<b>35-39</b>	<b>4,267</b>	<b>938</b>	<b>1,369</b>	<b>1,194</b>	<b>498</b>	<b>144</b>	<b>93</b>	<b>31</b>
40	368	75	98	103	57	23	12	-
41	217	48	58	38	37	20	13	3
42	156	30	45	32	30	9	10	-
43	67	9	16	12	11	6	12	1
44	22	2	7	2	3	2	4	2
<b>40-44</b>	<b>830</b>	<b>164</b>	<b>224</b>	<b>187</b>	<b>138</b>	<b>60</b>	<b>51</b>	<b>6</b>
<b>45 and over</b>	<b>39</b>	<b>14</b>	<b>5</b>	<b>6</b>	<b>8</b>	<b>2</b>	<b>4</b>	-
Age not stated	7	2	3	1	1	-	-	-

**Table 5 Number and percentage of births registered within and outside marriage, classified by age of mother**

Age of mother at maternity	Total	Married parents	Unmarried Parents		% to married parents	% to unmarried parents	
			Total	Same address		Total	Same address
	Number				Percentage		
<b>All ages</b>	<b>19,027</b>	<b>12,856</b>	<b>6,171</b>	<b>3,346</b>	<b>68</b>	<b>32</b>	<b>18</b>
<b>15 and under</b>	<b>13</b>	<b>-</b>	<b>13</b>	<b>1</b>	<b>-</b>	<b>100</b>	<b>8</b>
16	39	1	38	3	3	97	8
17	89	2	87	22	2	98	25
18	199	16	183	36	8	92	18
19	295	27	268	74	9	91	25
<b>Under 20</b>	<b>635</b>	<b>46</b>	<b>589</b>	<b>136</b>	<b>7</b>	<b>93</b>	<b>21</b>
20	312	49	263	97	16	84	31
21	396	77	319	119	19	81	30
22	460	97	363	161	21	79	35
23	521	148	373	186	28	72	36
24	549	182	367	199	33	67	36
<b>20-24</b>	<b>2,238</b>	<b>553</b>	<b>1,685</b>	<b>762</b>	<b>25</b>	<b>75</b>	<b>34</b>
25	678	262	416	245	39	61	36
26	769	366	403	266	48	52	35
27	901	501	400	233	56	44	26
28	1,061	695	366	226	66	34	21
29	1,077	764	313	194	71	29	18
<b>25-29</b>	<b>4,486</b>	<b>2,588</b>	<b>1,898</b>	<b>1,164</b>	<b>58</b>	<b>42</b>	<b>26</b>
30	1,249	932	317	204	75	25	16
31	1,316	1,063	253	146	81	19	11
32	1,327	1,087	240	150	82	18	11
33	1,333	1,143	190	131	86	14	10
34	1,300	1,140	160	98	88	12	8
<b>30-34</b>	<b>6,525</b>	<b>5,365</b>	<b>1,160</b>	<b>729</b>	<b>82</b>	<b>18</b>	<b>11</b>
35	1,176	1,002	174	124	85	15	11
36	1,029	872	157	104	85	15	10
37	894	755	139	92	84	16	10
38	673	559	114	71	83	17	11
39	495	416	79	50	84	16	10
<b>35-39</b>	<b>4,267</b>	<b>3,604</b>	<b>663</b>	<b>441</b>	<b>84</b>	<b>16</b>	<b>10</b>
40	368	301	67	41	82	18	11
41	217	176	41	33	81	19	15
42	156	118	38	28	76	24	18
43	67	48	19	9	72	28	13
44	22	18	4	2	82	18	9
<b>40-44</b>	<b>830</b>	<b>661</b>	<b>169</b>	<b>113</b>	<b>80</b>	<b>20</b>	<b>14</b>
<b>45 and over</b>	<b>39</b>	<b>34</b>	<b>5</b>	<b>1</b>	<b>87</b>	<b>13</b>	<b>3</b>
Age not stated	7	5	2	-	71	29	-

**Table 6 Number and percentage of births registered within and outside marriage, classified by area of residence of mother**

Area of residence	Total	Married parents	Unmarried Parents		% to married parents	% to unmarried parents	
			Total	Same address		Total	Same address
	Number				Percentage		
<b>STATE</b>	<b>19,027</b>	<b>12,856</b>	<b>6,171</b>	<b>3,346</b>	<b>68</b>	<b>32</b>	<b>18</b>
<b>LEINSTER</b>	<b>10,504</b>	<b>6,841</b>	<b>3,663</b>	<b>1,838</b>	<b>65</b>	<b>35</b>	<b>17</b>
Carlow	263	170	93	54	65	35	21
Dublin City	1,888	1,061	827	309	56	44	16
South Dublin	1,125	664	461	189	59	41	17
Fingal	1,384	967	417	239	70	30	17
Dun Laoghaire Rathdown	707	547	160	84	77	23	12
Kildare	1,009	707	302	178	70	30	18
Kilkenny	336	239	97	63	71	29	19
Laois	350	217	133	80	62	38	23
Longford	180	133	47	25	74	26	14
Louth	429	261	168	80	61	39	19
Meath	826	592	234	144	72	28	17
Offaly	359	233	126	78	65	35	22
Westmeath	384	260	124	72	68	32	19
Wexford	658	383	275	135	58	42	21
Wicklow	606	407	199	108	67	33	18
<b>MUNSTER</b>	<b>5,061</b>	<b>3,524</b>	<b>1,537</b>	<b>947</b>	<b>70</b>	<b>30</b>	<b>19</b>
Clare	452	320	132	98	71	29	22
Cork City	466	280	186	102	60	40	22
Cork County	1,673	1,294	379	267	77	23	16
Kerry	534	367	167	90	69	31	17
Limerick City	229	106	123	67	46	54	29
Limerick County	564	404	160	101	72	28	18
North Tipperary	325	233	92	58	72	28	18
South Tipperary	312	193	119	67	62	38	21
Waterford City	214	128	86	40	60	40	19
Waterford County	292	199	93	57	68	32	20
<b>CONNACHT</b>	<b>2,266</b>	<b>1,669</b>	<b>597</b>	<b>378</b>	<b>74</b>	<b>26</b>	<b>17</b>
Galway City	271	172	99	65	63	37	24
Galway County	820	652	168	114	80	20	14
Leitrim	140	100	40	31	71	29	22
Mayo	524	372	152	86	71	29	16
Roscommon	242	186	56	37	77	23	15
Sligo	269	187	82	45	70	30	17
<b>ULSTER (PART OF)</b>	<b>1,196</b>	<b>822</b>	<b>374</b>	<b>183</b>	<b>69</b>	<b>31</b>	<b>15</b>
Cavan	350	246	104	59	70	30	17
Donegal	605	399	206	82	66	34	14
Monaghan	241	177	64	42	73	27	17
<b>REGIONAL AUTHORITIES:</b>							
Border	2,034	1,370	664	339	67	33	17
Midland	1,273	843	430	255	66	34	20
West	1,857	1,382	475	302	74	26	16
Dublin	5,104	3,239	1,865	821	63	37	16
Mid-East	2,441	1,706	735	430	70	30	18
Mid-West	1,570	1,063	507	324	68	32	21
South-East	2,075	1,312	763	416	63	37	20
South-West	2,673	1,941	732	459	73	27	17

**Table 7 Births registered, classified by area of residence and age of mother**

Area of residence	Total	Under 20	20-24	25-29	30-34	35-39	40 and over	Age not stated	Average age of mother at maternity	
									Total	First
<b>STATE</b>	<b>19,027</b>	<b>635</b>	<b>2,238</b>	<b>4,486</b>	<b>6,525</b>	<b>4,267</b>	<b>869</b>	<b>7</b>	<b>31.2</b>	<b>28.9</b>
<b>LEINSTER</b>	<b>10,504</b>	<b>341</b>	<b>1,292</b>	<b>2,507</b>	<b>3,497</b>	<b>2,391</b>	<b>473</b>	<b>3</b>	<b>31.2</b>	<b>28.9</b>
Carlow	263	3	41	70	86	47	15	1	30.9	28.4
Dublin City	1,888	104	262	464	536	437	84	1	30.7	28.5
South Dublin	1,125	62	180	294	355	198	36	-	30.0	27.7
Fingal	1,384	31	152	329	499	323	50	-	31.4	29.4
Dun Laoghaire Rathdown	707	12	42	86	257	249	61	-	33.7	31.7
Kildare	1,009	28	94	255	355	223	54	-	31.5	29.4
Kilkenny	336	3	38	70	123	87	15	-	32.0	29.5
Laois	350	18	54	96	105	62	15	-	30.1	27.7
Longford	180	2	24	45	68	36	5	-	30.9	30.1
Louth	429	14	68	97	148	89	13	-	30.5	27.9
Meath	826	8	71	218	305	188	36	-	31.8	29.5
Offaly	359	9	52	102	107	80	9	-	30.7	28.6
Westmeath	384	9	56	96	120	81	21	1	30.9	28.4
Wexford	658	27	93	154	218	139	27	-	30.8	27.8
Wicklow	606	11	65	131	215	152	32	-	31.8	29.8
<b>MUNSTER</b>	<b>5,061</b>	<b>158</b>	<b>585</b>	<b>1,192</b>	<b>1,810</b>	<b>1,091</b>	<b>224</b>	<b>1</b>	<b>31.2</b>	<b>29.0</b>
Clare	452	12	54	98	157	112	19	-	31.5	29.5
Cork City	466	26	82	114	156	74	14	-	29.8	27.6
Cork County	1,673	36	126	387	640	396	88	-	32.0	30.0
Kerry	534	16	63	121	180	119	34	1	31.5	28.6
Limerick City	229	15	56	75	50	30	3	-	28.3	26.4
Limerick County	564	18	60	125	203	134	24	-	31.4	29.2
North Tipperary	325	10	40	67	122	68	18	-	31.4	29.1
South Tipperary	312	9	45	78	108	62	10	-	30.8	28.6
Waterford City	214	9	37	60	68	35	5	-	29.7	27.2
Waterford County	292	7	22	67	126	61	9	-	31.6	29.4
<b>CONNACHT</b>	<b>2,266</b>	<b>72</b>	<b>243</b>	<b>483</b>	<b>794</b>	<b>555</b>	<b>116</b>	<b>3</b>	<b>31.6</b>	<b>28.9</b>
Galway City	271	13	42	68	79	58	10	1	30.4	28.0
Galway County	820	18	74	168	308	219	32	1	32.0	29.8
Leitrim	140	2	15	41	46	27	9	-	31.5	29.2
Mayo	524	17	59	112	182	119	34	1	31.6	28.5
Roscommon	242	7	22	44	87	63	19	-	32.2	29.2
Sligo	269	15	31	50	92	69	12	-	31.2	27.8
<b>ULSTER (PART OF)</b>	<b>1,196</b>	<b>64</b>	<b>118</b>	<b>304</b>	<b>424</b>	<b>230</b>	<b>56</b>	<b>-</b>	<b>30.8</b>	<b>27.8</b>
Cavan	350	19	32	96	118	65	20	-	30.9	27.7
Donegal	605	34	66	142	212	126	25	-	30.8	27.8
Monaghan	241	11	20	66	94	39	11	-	30.8	27.9
<b>REGIONAL AUTHORITIES:</b>										
Border	2,034	95	232	492	710	415	90	-	30.9	27.9
Midland	1,273	38	186	339	400	259	50	1	30.6	28.4
West	1,857	55	197	392	656	459	95	3	31.7	29.0
Dublin	5,104	209	636	1,173	1,647	1,207	231	1	31.1	29.0
Mid-East	2,441	47	230	604	875	563	122	-	31.7	29.5
Mid-West	1,570	55	210	365	532	344	64	-	31.0	28.8
South-East	2,075	58	276	499	729	431	81	1	31.0	28.4
South-West	2,673	78	271	622	976	589	136	1	31.5	29.3

**Table 8 Births registered outside marriage, classified by area of residence and age of mother**

Area of residence	Total	Under 25	25-29	30-34	35-39	40 and over	Age not stated	Average age of mother at maternity	
								Total	First
<b>STATE</b>	<b>6,171</b>	<b>2,274</b>	<b>1,898</b>	<b>1,160</b>	<b>663</b>	<b>174</b>	<b>2</b>	<b>27.6</b>	<b>25.7</b>
<b>LEINSTER</b>	<b>3,663</b>	<b>1,305</b>	<b>1,146</b>	<b>688</b>	<b>417</b>	<b>106</b>	<b>1</b>	<b>27.8</b>	<b>25.9</b>
Carlow	93	35	33	17	5	3	-	27.3	25.9
Dublin City	827	303	238	154	101	30	1	27.8	25.8
South Dublin	461	201	141	68	41	10	-	26.7	24.6
Fingal	417	121	152	82	50	12	-	28.4	26.9
Dun Laoghaire Rathdown	160	45	41	41	25	8	-	29.4	28.0
Kildare	302	93	110	61	28	10	-	27.9	26.2
Kilkenny	97	33	26	19	18	1	-	28.8	27.3
Laois	133	56	41	18	16	2	-	26.9	23.8
Longford	47	13	11	12	9	2	-	29.6	29.1
Louth	168	72	50	28	14	4	-	26.8	24.4
Meath	234	64	86	46	29	9	-	28.6	26.7
Offaly	126	50	39	27	10	-	-	27.2	24.9
Westmeath	124	51	40	18	12	3	-	26.8	25.0
Wexford	275	106	79	54	31	5	-	27.6	25.4
Wicklow	199	62	59	43	28	7	-	28.6	26.3
<b>MUNSTER</b>	<b>1,537</b>	<b>599</b>	<b>471</b>	<b>290</b>	<b>138</b>	<b>39</b>	<b>-</b>	<b>27.3</b>	<b>25.6</b>
Clare	132	52	37	22	14	7	-	27.7	26.4
Cork City	186	92	51	29	10	4	-	26.0	23.9
Cork County	379	133	117	78	40	11	-	27.9	26.6
Kerry	167	62	49	32	19	5	-	27.8	25.7
Limerick City	123	58	38	19	7	1	-	26.0	24.3
Limerick County	160	54	53	35	16	2	-	27.7	26.2
North Tipperary	92	39	24	20	5	4	-	27.1	25.2
South Tipperary	119	51	39	14	13	2	-	27.0	25.7
Waterford City	86	31	33	13	8	1	-	27.2	24.6
Waterford County	93	27	30	28	6	2	-	28.1	25.7
<b>CONNACHT</b>	<b>597</b>	<b>229</b>	<b>173</b>	<b>105</b>	<b>72</b>	<b>17</b>	<b>1</b>	<b>27.5</b>	<b>25.6</b>
Galway City	99	37	30	18	12	2	-	27.4	26.2
Galway County	168	66	47	30	19	6	-	27.7	26.1
Leitrim	40	10	18	7	4	1	-	28.4	27.1
Mayo	152	56	39	33	19	4	1	27.8	25.6
Roscommon	56	23	17	7	9	-	-	26.9	24.1
Sligo	82	37	22	10	9	4	-	26.7	23.3
<b>ULSTER (PART OF)</b>	<b>374</b>	<b>141</b>	<b>108</b>	<b>77</b>	<b>36</b>	<b>12</b>	<b>-</b>	<b>27.2</b>	<b>25.0</b>
Cavan	104	38	31	23	8	4	-	27.2	25.1
Donegal	206	79	58	39	23	7	-	27.3	25.2
Monaghan	64	24	19	15	5	1	-	26.9	24.5
<b>REGIONAL AUTHORITIES:</b>									
Border	664	260	198	122	63	21	-	27.1	24.8
Midland	430	170	131	75	47	7	-	27.2	24.9
West	475	182	133	88	59	12	1	27.5	25.8
Dublin	1,865	670	572	345	217	60	1	27.8	26.0
Mid-East	735	219	255	150	85	26	-	28.3	26.4
Mid-West	507	203	152	96	42	14	-	27.2	25.6
South-East	763	283	240	145	81	14	-	27.6	25.7
South-West	732	287	217	139	69	20	-	27.4	25.7

**Table 9 Deaths registered by county of residence of deceased**

Area of residence	Total	Male	Female	Rate <sup>1</sup>
<b>STATE</b>	<b>7,570</b>	<b>3,846</b>	<b>3,724</b>	<b>6.8</b>
<b>LEINSTER</b>	<b>3,711</b>	<b>1,831</b>	<b>1,880</b>	<b>6.2</b>
Carlow	83	47	36	6.3
Dublin City	1,083	490	593	8.2
South Dublin	245	122	123	3.8
Fingal	271	135	136	4.3
Dun Laoghaire Rathdown	334	147	187	6.6
Kildare	248	125	123	5.1
Kilkenny	155	87	68	6.8
Laois	102	48	54	5.8
Longford	73	36	37	8.1
Louth	224	124	100	7.7
Meath	221	110	111	5.2
Offaly	119	68	51	6.4
Westmeath	149	68	81	7.2
Wexford	220	121	99	6.4
Wicklow	184	103	81	5.6
<b>MUNSTER</b>	<b>2,255</b>	<b>1,162</b>	<b>1,093</b>	<b>7.4</b>
Clare	213	121	92	7.4
Cork City	303	147	156	9.7
Cork County	583	290	293	6.2
Kerry	302	164	138	8.3
Limerick City	115	54	61	7.4
Limerick County	232	125	107	7.2
North Tipperary	172	87	85	10.0
South Tipperary	151	78	73	7.0
Waterford City	65	30	35	5.4
Waterford County	119	66	53	7.3
<b>CONNACHT</b>	<b>1,079</b>	<b>574</b>	<b>505</b>	<b>8.2</b>
Galway City	47	23	24	2.5
Galway County	389	220	169	9.4
Leitrim	63	39	24	8.3
Mayo	313	157	156	9.7
Roscommon	154	84	70	10.0
Sligo	113	51	62	7.1
<b>ULSTER (PART OF)</b>	<b>525</b>	<b>279</b>	<b>246</b>	<b>7.5</b>
Cavan	124	63	61	7.4
Donegal	291	154	137	7.6
Monaghan	110	62	48	7.5
<b>REGIONAL AUTHORITIES:</b>				
Border	925	493	432	7.5
Midland	443	220	223	6.6
West	903	484	419	8.5
Dublin	1,933	894	1,039	6.3
Mid-East	653	338	315	5.1
Mid-West	732	387	345	7.9
South-East	793	429	364	6.5
South-West	1,188	601	587	7.4

<sup>1</sup> Deaths per year per 1,000 population. Annual rates based on estimated 2008 population.



**Table 10 Deaths registered by cause of death and county of residence of deceased**

Area of residence	Total deaths	Malignant Neoplasms	Diseases of the Circulatory system	Diseases of the Respiratory system	External causes	All other causes
<b>STATE</b>	<b>7,570</b>	<b>2,137</b>	<b>2,673</b>	<b>1,002</b>	<b>435</b>	<b>1,323</b>
<b>LEINSTER</b>	<b>3,711</b>	<b>1,065</b>	<b>1,257</b>	<b>504</b>	<b>199</b>	<b>686</b>
Carlow	83	25	24	10	7	17
Dublin City	1,083	301	379	150	57	196
South Dublin	245	64	95	37	10	39
Fingal	271	89	94	25	11	52
Dun Laoghaire Rathdown	334	88	118	46	15	67
Kildare	248	67	81	41	15	44
Kilkenny	155	56	47	24	7	21
Laois	102	26	38	15	4	19
Longford	73	21	23	12	4	13
Louth	224	53	78	22	25	46
Meath	221	71	71	29	5	45
Offaly	119	36	40	20	5	18
Westmeath	149	42	48	26	9	24
Wexford	220	67	68	29	15	41
Wicklow	184	59	53	18	10	44
<b>MUNSTER</b>	<b>2,255</b>	<b>665</b>	<b>798</b>	<b>270</b>	<b>139</b>	<b>383</b>
Clare	213	52	76	32	13	40
Cork City	303	83	108	37	30	45
Cork County	583	177	209	65	38	94
Kerry	302	82	106	38	19	57
Limerick City	115	32	40	14	8	21
Limerick County	232	72	82	33	9	36
North Tipperary	172	55	72	11	12	22
South Tipperary	151	49	50	18	2	32
Waterford City	65	23	16	8	3	15
Waterford County	119	40	39	14	5	21
<b>CONNACHT</b>	<b>1,079</b>	<b>282</b>	<b>418</b>	<b>140</b>	<b>69</b>	<b>170</b>
Galway City	47	14	15	7	4	7
Galway County	389	103	146	55	25	60
Leitrim	63	18	21	12	2	10
Mayo	313	93	120	27	19	54
Roscommon	154	22	69	27	13	23
Sligo	113	32	47	12	6	16
<b>ULSTER (PART OF)</b>	<b>525</b>	<b>125</b>	<b>200</b>	<b>88</b>	<b>28</b>	<b>84</b>
Cavan	124	29	51	11	7	26
Donegal	291	71	104	60	13	43
Monaghan	110	25	45	17	8	15
<b>REGIONAL AUTHORITIES:</b>						
Border	925	228	346	134	61	156
Midland	443	125	149	73	22	74
West	903	232	350	116	61	144
Dublin	1,933	542	686	258	93	354
Mid-East	653	197	205	88	30	133
Mid-West	732	211	270	90	42	119
South-East	793	260	244	103	39	147
South-West	1,188	342	423	140	87	196

**Table 11 Deaths registered classified by cause and age group**

Cause of Death	65 COD Code	ICD-10 Code	Total Deaths	Age Group										
				Under 1	1-4	5-14	15-24	25-34	35-44	45-54	55-64	65-74	75-84	85 and over
<b>Total deaths</b>	<b>0</b>	<b>A00-Y89</b>	<b>7,570</b>	<b>90</b>	<b>12</b>	<b>26</b>	<b>85</b>	<b>116</b>	<b>199</b>	<b>404</b>	<b>787</b>	<b>1,361</b>	<b>2,315</b>	<b>2,175</b>
<b>Infectious and parasitic diseases:-</b>	<b>1</b>	<b>A00-B99</b>	<b>63</b>	<b>2</b>	<b>1</b>	<b>0</b>	<b>1</b>	<b>3</b>	<b>2</b>	<b>3</b>	<b>12</b>	<b>5</b>	<b>21</b>	<b>13</b>
Tuberculosis	2	A15-A19,B90	10	0	0	0	0	0	0	0	3	0	4	3
Meningococcal infection	3	A39	3	0	1	0	1	0	0	0	0	1	0	0
AIDS (HIV Disease)	4	B20-B24	3	0	0	0	0	0	2	0	1	0	0	0
Viral Hepatitis	5	B15-B19	3	0	0	0	0	0	0	2	1	0	0	0
Other infectious and parasitic diseases			44	2	0	0	0	3	0	1	7	4	17	10
<b>Neoplasms</b>	<b>6</b>	<b>C00-D48</b>	<b>2,193</b>	<b>1</b>	<b>0</b>	<b>8</b>	<b>4</b>	<b>15</b>	<b>54</b>	<b>174</b>	<b>383</b>	<b>565</b>	<b>655</b>	<b>334</b>
<b>Malignant Neoplasms of the:-</b>	<b>7</b>	<b>C00-C97</b>	<b>2,137</b>	<b>1</b>	<b>0</b>	<b>7</b>	<b>3</b>	<b>15</b>	<b>54</b>	<b>174</b>	<b>374</b>	<b>560</b>	<b>634</b>	<b>315</b>
Lip, oral cavity, pharynx	8	C00-C14	30	0	0	0	1	1	0	3	9	6	5	5
Oesophagus	9	C15	103	0	0	0	0	0	1	4	23	29	32	14
Stomach	10	C16	91	0	0	0	0	0	1	5	12	28	34	11
Colon	11	C18	153	0	0	0	0	1	7	11	23	31	51	32
Rectum and anus	12	C19-C21	97	0	0	0	0	1	5	5	13	31	32	10
Liver and the intrahepatic bile ducts	13	C22	54	0	0	0	0	0	2	3	12	15	15	7
Pancreas	14	C25	110	0	0	0	0	0	1	8	15	34	36	16
Larynx and trachea/bronchus /lung	15	C32-C34	438	0	0	0	0	0	5	31	105	130	129	38
Skin	16	C43	48	0	0	0	0	3	4	7	13	8	7	6
Breast	17	C50	209	0	0	0	0	1	7	37	48	40	41	35
Cervix uteri	18	C53	19	0	0	0	0	0	3	6	3	4	2	1
Other parts of uterus	19	C54-C55	24	0	0	0	0	0	0	1	6	6	9	2
Ovary	20	C56	70	0	0	0	0	0	0	8	9	24	19	10
Prostate	21	C61	118	0	0	0	0	0	0	1	5	32	49	31
Kidney	22	C64	56	0	0	0	0	0	1	4	11	17	15	8
Bladder	23	C67	46	0	0	0	0	0	0	0	7	13	16	10
Lymph/haematopoietic tissue	24	C81-C96	156	0	0	2	2	1	5	16	22	38	43	27
Other malignant neoplasms			315	1	0	5	0	7	12	24	38	77	99	52
<b>Diseases of the blood and blood-forming organs, immunological disorders</b>	<b>25</b>	<b>D50-D89</b>	<b>20</b>	<b>0</b>	<b>1</b>	<b>0</b>	<b>0</b>	<b>0</b>	<b>2</b>	<b>1</b>	<b>0</b>	<b>1</b>	<b>5</b>	<b>10</b>
<b>Endocrine, Nutritional and metabolic diseases</b>	<b>26</b>	<b>E00-E90</b>	<b>171</b>	<b>0</b>	<b>0</b>	<b>2</b>	<b>4</b>	<b>0</b>	<b>3</b>	<b>4</b>	<b>13</b>	<b>32</b>	<b>68</b>	<b>45</b>
Diabetes mellitus	27	E10-E14	131	0	0	0	0	0	1	1	10	24	57	38
<b>Mental and behavioural disorders</b>	<b>28</b>	<b>F00-F99</b>	<b>189</b>	<b>0</b>	<b>1</b>	<b>0</b>	<b>0</b>	<b>2</b>	<b>7</b>	<b>11</b>	<b>8</b>	<b>14</b>	<b>48</b>	<b>98</b>
Alcohol abuse (including alcoholic psychosis)	29	F10	31	0	0	0	0	2	6	10	6	7	0	0
Drug dependence, toxicomania	30	F11-F16,F18-F19	0	0	0	0	0	0	0	0	0	0	0	0
<b>Diseases of the nervous system and the sense organs</b>	<b>31</b>	<b>G00-H95</b>	<b>219</b>	<b>3</b>	<b>0</b>	<b>1</b>	<b>8</b>	<b>2</b>	<b>5</b>	<b>12</b>	<b>20</b>	<b>27</b>	<b>84</b>	<b>57</b>
Meningitis	32	G00-G03	3	1	0	0	1	0	0	0	0	0	0	1
Ischaemic heart disease	33	I00-I99	2,673	3	1	3	8	8	44	90	210	442	875	989
of which: (Acute myocardial infarction)	34	I20-I25	1,419	0	0	0	3	1	17	49	136	270	467	476
Other heart disease	35	I30-I33,I39-I52	733	0	0	0	1	0	9	23	72	125	244	259
Cerebrovascular disease	36	I60-I69	323	0	1	1	1	2	6	11	22	38	106	135
Other diseases of circulatory system			558	1	0	2	3	3	12	20	29	66	177	245
			373	2	0	0	1	2	9	10	23	68	125	133



**Table 12 Male deaths registered classified by cause and age group**

Cause of Death	65 COD Code	ICD-10 Code	Total Males	Age Group										
				Under 1	1-4	5-14	15-24	25-34	35-44	45-54	55-64	65-74	75-84	85 and over
<b>Total Male Deaths</b>	<b>0</b>	<b>A00-Y89</b>	<b>3,846</b>	<b>50</b>	<b>6</b>	<b>18</b>	<b>66</b>	<b>93</b>	<b>138</b>	<b>229</b>	<b>475</b>	<b>851</b>	<b>1,167</b>	<b>753</b>
<b>Infectious and parasitic diseases:-</b>														
Tuberculosis	1	A00-B99	27	1	0	0	1	2	2	3	6	1	7	4
Meningococcal infection	2	A15-A19;B90	7	0	0	0	0	0	0	0	3	0	1	3
AIDS (HIV Disease)	3	A39	1	0	0	1	0	0	0	0	0	0	0	0
Viral Hepatitis	4	B20-B24	3	0	0	0	0	0	2	0	1	0	0	0
Other infectious and parasitic diseases	5	B15-B19	2	0	0	0	0	0	0	2	0	0	0	0
			14	1	0	0	0	2	0	1	2	1	6	1
<b>Neoplasms</b>	<b>6</b>	<b>C00-D48</b>	<b>1,121</b>	<b>0</b>	<b>0</b>	<b>6</b>	<b>3</b>	<b>11</b>	<b>28</b>	<b>68</b>	<b>199</b>	<b>327</b>	<b>341</b>	<b>138</b>
<b>Malignant Neoplasms of the:-</b>														
Lip, oral cavity, pharynx	7	C00-C97	1,091	0	0	6	2	11	28	68	192	324	329	131
Oesophagus	8	C00-C14	27	0	0	0	1	1	0	2	7	6	5	5
Stomach	9	C15	70	0	0	0	0	0	1	3	20	21	18	7
Colon	10	C16	55	0	0	0	0	0	1	4	10	19	18	3
Rectum and anus	11	C18	70	0	0	0	0	0	3	6	9	17	28	7
Liver and the intrahepatic bile ducts	12	C19-C21	59	0	0	0	0	1	1	3	7	21	20	6
Pancreas	13	C22	34	0	0	0	0	0	2	3	7	10	10	2
Larynx and trachea/bronchus /lung	14	C25	63	0	0	0	0	0	0	5	10	22	21	5
Skin	15	C32-C34	249	0	0	0	0	0	4	13	66	77	68	21
Breast	16	C43	27	0	0	0	0	3	4	4	7	3	4	2
Cervix uteri	17	C50	1	0	0	0	0	0	0	0	0	1	0	0
Other parts of uterus	18	C53	0	0	0	0	0	0	0	0	0	0	0	0
Ovary	19	C54-C55	0	0	0	0	0	0	0	0	0	0	0	0
Prostate	20	C56	0	0	0	0	0	0	0	0	0	0	0	0
Kidney	21	C61	118	0	0	0	0	0	0	1	5	32	49	31
Bladder	22	C64	31	0	0	0	0	0	1	4	6	9	9	3
Lymph/haematopoietic tissue	23	C67	83	0	0	1	1	1	2	8	12	28	22	8
Other malignant neoplasms	24	C81-C96	172	0	0	5	0	5	9	12	21	48	49	23
<b>Diseases of the blood and immunological disorders</b>	<b>25</b>	<b>D50-D89</b>	<b>10</b>	<b>0</b>	<b>0</b>	<b>0</b>	<b>0</b>	<b>0</b>	<b>1</b>	<b>1</b>	<b>0</b>	<b>1</b>	<b>3</b>	<b>4</b>
<b>Endocrine, Nutritional and metabolic diseases</b>	<b>26</b>	<b>E00-E90</b>	<b>90</b>	<b>0</b>	<b>0</b>	<b>1</b>	<b>3</b>	<b>0</b>	<b>1</b>	<b>2</b>	<b>9</b>	<b>21</b>	<b>40</b>	<b>13</b>
Diabetes mellitus	27	E10-E14	73	0	0	0	0	0	0	1	6	18	35	13
<b>Mental and behavioural disorders</b>	<b>28</b>	<b>F00-F99</b>	<b>74</b>	<b>0</b>	<b>0</b>	<b>0</b>	<b>0</b>	<b>2</b>	<b>4</b>	<b>7</b>	<b>5</b>	<b>6</b>	<b>22</b>	<b>28</b>
Alcohol abuse (including alcoholic psychosis)	29	F10	21	0	0	0	0	2	4	7	4	4	0	0
Drug dependence, toxicomania	30	F11-F16;F18-F19	0	0	0	0	0	0	0	0	0	0	0	0
<b>Diseases of the nervous system and the sense organs</b>	<b>31</b>	<b>G00-H95</b>	<b>114</b>	<b>3</b>	<b>0</b>	<b>1</b>	<b>6</b>	<b>1</b>	<b>4</b>	<b>8</b>	<b>13</b>	<b>17</b>	<b>40</b>	<b>21</b>
Meningitis	32	G00-G03	3	1	0	0	1	0	0	0	0	0	0	1
Ischaemic heart disease	33	I00-I99	1,359	2	1	2	4	5	33	72	151	312	444	333
of which: (Acute myocardial infarction)	34	I20-I25	803	0	0	0	2	1	16	42	107	206	263	166
Other heart disease	35	I21	403	0	0	0	0	0	8	21	56	91	138	89
Cerebrovascular disease	36	I30-I33;I39-I52	143	0	1	1	1	2	3	9	16	24	52	34
Other diseases of circulatory system		I60-I69	227	0	0	1	1	1	8	14	15	38	73	76
			186	2	0	0	0	1	6	7	13	44	56	57

<b>Diseases of the Respiratory system</b>	<b>37</b>	<b>J00-J99</b>	<b>461</b>	<b>1</b>	<b>0</b>	<b>0</b>	<b>0</b>	<b>0</b>	<b>1</b>	<b>3</b>	<b>9</b>	<b>22</b>	<b>89</b>	<b>194</b>	<b>142</b>
Influenza	38	J10-J11	1	0	0	0	0	0	0	0	0	0	0	1	0
Pneumonia	39	J12-J19	153	1	0	0	0	0	0	0	5	3	20	59	65
Chronic Lower respiratory disease	40	J40-J47	202	0	0	0	0	0	1	2	2	14	41	92	50
of which: <i>Asthma</i>	41	J45-J46	6	0	0	0	0	0	0	1	1	1	1	0	2
Other diseases of the respiratory system			105	0	0	0	0	0	0	1	2	5	28	42	27
<b>Diseases of the Digestive system</b>	<b>42</b>	<b>K00-K93</b>	<b>139</b>	<b>0</b>	<b>2</b>	<b>1</b>	<b>0</b>	<b>0</b>	<b>4</b>	<b>12</b>	<b>15</b>	<b>30</b>	<b>37</b>	<b>19</b>	<b>19</b>
Ulcer of stomach, duodenum and jejunum	43	K25-K28	18	0	0	0	0	0	0	2	0	4	2	5	5
Chronic liver disease	44	K70,K73-K74	54	0	0	0	0	0	2	8	9	18	17	0	0
Other diseases of the digestive system			67	0	2	1	0	0	2	2	6	8	18	14	14
<b>Diseases of the skin and subcutaneous tissue</b>	<b>45</b>	<b>L00-L99</b>	<b>3</b>	<b>0</b>	<b>0</b>	<b>0</b>	<b>0</b>	<b>0</b>	<b>0</b>	<b>0</b>	<b>1</b>	<b>0</b>	<b>1</b>	<b>0</b>	<b>1</b>
<b>Diseases of the musculoskeletal system/connective tissue</b>	<b>46</b>	<b>M00-M99</b>	<b>17</b>	<b>0</b>	<b>0</b>	<b>0</b>	<b>0</b>	<b>0</b>	<b>0</b>	<b>0</b>	<b>1</b>	<b>2</b>	<b>4</b>	<b>8</b>	<b>2</b>
Rheumatoid arthritis and osteoarthritis	47	M05-M06,M15-M19	5	0	0	0	0	0	0	0	0	0	2	2	1
<b>Diseases of the genitourinary system</b>	<b>48</b>	<b>N00-N99</b>	<b>72</b>	<b>0</b>	<b>0</b>	<b>0</b>	<b>0</b>	<b>0</b>	<b>0</b>	<b>0</b>	<b>0</b>	<b>5</b>	<b>10</b>	<b>23</b>	<b>34</b>
Diseases of the kidney and ureter	49	N00-N29	55	0	0	0	0	0	0	0	0	5	10	18	22
<b>Complications of pregnancy, childbirth and puerperium</b>	<b>50</b>	<b>O00-O99</b>	<b>0</b>	<b>0</b>	<b>0</b>	<b>0</b>	<b>0</b>	<b>0</b>	<b>0</b>	<b>0</b>	<b>0</b>	<b>0</b>	<b>0</b>	<b>0</b>	<b>0</b>
<b>Certain conditions originating in the perinatal period<sup>1</sup></b>	<b>51</b>	<b>P00-P96</b>	<b>18</b>	<b>18</b>	<b>0</b>	<b>0</b>	<b>0</b>	<b>0</b>	<b>0</b>	<b>0</b>	<b>0</b>	<b>0</b>	<b>0</b>	<b>0</b>	<b>0</b>
<b>Congenital malformations and chromosomal abnormalities</b>	<b>52</b>	<b>Q00-Q99</b>	<b>29</b>	<b>22</b>	<b>1</b>	<b>0</b>	<b>1</b>	<b>0</b>	<b>2</b>	<b>1</b>	<b>0</b>	<b>2</b>	<b>0</b>	<b>0</b>	<b>0</b>
Congenital malformations of the:-															
Nervous system	53	Q00-Q07	7	4	1	0	0	0	1	0	0	1	0	0	0
Circulatory system	54	Q20-Q28	5	4	0	0	0	0	1	0	0	0	0	0	0
<b>Symptoms, signs, abnormal findings, ill-defined causes</b>	<b>55</b>	<b>R00-R99</b>	<b>10</b>	<b>2</b>	<b>0</b>	<b>0</b>	<b>0</b>	<b>0</b>	<b>0</b>	<b>1</b>	<b>0</b>	<b>1</b>	<b>1</b>	<b>0</b>	<b>5</b>
Sudden infant death syndrome	56	R95	2	2	0	0	0	0	0	0	0	0	0	0	0
Unknown and unspecified causes	57	R96-R99	5	0	0	0	0	0	0	1	0	1	1	0	2
<b>External causes of injury and poisoning</b>	<b>58</b>	<b>V01-Y89</b>	<b>302</b>	<b>1</b>	<b>2</b>	<b>7</b>	<b>48</b>	<b>65</b>	<b>65</b>	<b>48</b>	<b>42</b>	<b>30</b>	<b>24</b>	<b>26</b>	<b>9</b>
Accidents	59	V01-X59	172	1	2	4	25	33	33	23	22	17	17	19	9
of which: <i>Transport accidents</i>	60	V01-V99	65	1	0	1	14	15	15	11	4	8	4	6	1
<i>Accidental falls</i>	61	W00-W19	36	0	1	0	1	4	4	2	7	5	6	5	5
<i>Accidental poisoning other accidents</i>	62	X40-X49	34	0	0	0	7	12	6	6	6	2	7	1	0
Suicide and intentional self harm	63	X60-X84	37	0	1	3	3	2	2	4	5	2	7	7	3
Homicide/assault	64	X85-Y09	78	0	0	3	16	21	12	14	14	6	4	2	0
Events of undetermined intent	65	Y10-Y34	4	0	0	0	2	0	0	2	0	0	0	0	0
All other external causes			42	0	0	0	5	11	9	9	5	7	2	3	0
			6	0	0	0	0	0	0	2	1	0	1	2	0

<sup>1</sup> Stillbirths not included.

Table 13 Female deaths registered classified by cause and age group

Cause of Death	65 COD Code	ICD-10 Code	Total Females	Age Group										
				Under 1	1-4	5-14	15-24	25-34	35-44	45-54	55-64	65-74	75-84	85 and over
<b>Total Female Deaths</b>	<b>0</b>	<b>A00-Y89</b>	<b>3,724</b>	<b>40</b>	<b>6</b>	<b>8</b>	<b>19</b>	<b>23</b>	<b>61</b>	<b>175</b>	<b>312</b>	<b>510</b>	<b>1,148</b>	<b>1,422</b>
<b>Infectious and parasitic diseases:-</b>	<b>1</b>	<b>A00-B99</b>	<b>36</b>	<b>1</b>	<b>1</b>	<b>0</b>	<b>0</b>	<b>1</b>	<b>0</b>	<b>0</b>	<b>6</b>	<b>4</b>	<b>14</b>	<b>9</b>
Tuberculosis	2	A15-A19,B90	3	0	0	0	0	0	0	0	0	0	3	0
Meningococcal infection	3	A39	2	0	0	0	0	0	0	0	0	1	0	0
AIDS (HIV Disease)	4	B20-B24	0	0	0	0	0	0	0	0	0	0	0	0
Viral Hepatitis	5	B15-B19	1	0	0	0	0	0	0	0	1	0	0	0
Other infectious and parasitic diseases			30	1	0	0	0	1	0	0	5	3	11	9
<b>Neoplasms</b>	<b>6</b>	<b>C00-D48</b>	<b>1,072</b>	<b>1</b>	<b>0</b>	<b>2</b>	<b>1</b>	<b>4</b>	<b>26</b>	<b>106</b>	<b>184</b>	<b>238</b>	<b>314</b>	<b>196</b>
<b>Malignant Neoplasms of the:-</b>	<b>7</b>	<b>C00-C97</b>	<b>1,046</b>	<b>1</b>	<b>0</b>	<b>1</b>	<b>1</b>	<b>4</b>	<b>26</b>	<b>106</b>	<b>182</b>	<b>236</b>	<b>305</b>	<b>184</b>
Lip, oral cavity, pharynx	8	C00-C14	3	0	0	0	0	0	0	1	2	0	0	0
Oesophagus	9	C15	33	0	0	0	0	0	0	1	3	8	14	7
Stomach	10	C16	36	0	0	0	0	0	0	1	2	9	16	8
Colon	11	C18	83	0	0	0	0	1	4	5	14	11	23	25
Rectum and anus	12	C19-C21	38	0	0	0	0	0	4	2	6	10	12	4
Liver and the intrahepatic bile ducts	13	C22	20	0	0	0	0	0	0	5	5	5	5	5
Pancreas	14	C25	47	0	0	0	0	0	1	3	5	12	15	11
Larynx and trachea/bronchus /lung	15	C32-C34	189	0	0	0	0	0	1	18	39	53	61	17
Skin	16	C43	21	0	0	0	0	0	0	3	6	5	3	4
Breast	17	C50	208	0	0	0	0	1	7	37	48	39	41	35
Cervix uteri	18	C53	19	0	0	0	0	0	3	6	3	4	2	1
Other parts of uterus	19	C54-C55	24	0	0	0	0	0	0	1	6	6	9	2
Ovary	20	C56	70	0	0	0	0	0	0	8	9	24	19	10
Prostate	21	C61	0	0	0	0	0	0	0	0	0	0	0	0
Kidney	22	C64	24	0	0	0	0	0	0	0	5	8	6	5
Bladder	23	C67	15	0	0	0	0	0	0	0	2	3	8	2
Lymph/haematopoietic tissue	24	C81-C96	73	0	0	1	1	0	3	8	10	10	21	19
Other malignant neoplasms			143	1	0	0	0	2	3	12	17	29	50	29
<b>Diseases of the blood and blood-forming organs, immunological disorders</b>	<b>25</b>	<b>D50-D89</b>	<b>10</b>	<b>0</b>	<b>1</b>	<b>0</b>	<b>0</b>	<b>0</b>	<b>1</b>	<b>0</b>	<b>0</b>	<b>0</b>	<b>2</b>	<b>6</b>
<b>Endocrine, Nutritional and metabolic diseases</b>	<b>26</b>	<b>E00-E90</b>	<b>81</b>	<b>0</b>	<b>0</b>	<b>1</b>	<b>1</b>	<b>0</b>	<b>2</b>	<b>2</b>	<b>4</b>	<b>11</b>	<b>28</b>	<b>32</b>
Diabetes mellitus	27	E10-E14	58	0	0	0	0	0	1	0	4	6	22	25
<b>Mental and behavioural disorders</b>	<b>28</b>	<b>F00-F99</b>	<b>115</b>	<b>0</b>	<b>1</b>	<b>0</b>	<b>0</b>	<b>0</b>	<b>3</b>	<b>4</b>	<b>3</b>	<b>8</b>	<b>26</b>	<b>70</b>
Alcohol abuse (including alcoholic psychosis)	29	F10	10	0	0	0	0	0	2	3	2	3	0	0
Drug dependence, toxicomania	30	F11-F16,F18-F19	0	0	0	0	0	0	0	0	0	0	0	0
<b>Diseases of the nervous system and the sense organs</b>	<b>31</b>	<b>G00-H95</b>	<b>105</b>	<b>0</b>	<b>0</b>	<b>0</b>	<b>2</b>	<b>1</b>	<b>1</b>	<b>4</b>	<b>7</b>	<b>10</b>	<b>44</b>	<b>36</b>
Meningitis	32	G00-G03	0	0	0	0	0	0	0	0	0	0	0	0
<b>Diseases of the Circulatory System:-</b>	<b>33</b>	<b>I00-I99</b>	<b>1,314</b>	<b>1</b>	<b>0</b>	<b>1</b>	<b>4</b>	<b>3</b>	<b>11</b>	<b>18</b>	<b>59</b>	<b>130</b>	<b>431</b>	<b>656</b>
Ischaemic heart disease	34	I20-I25	616	0	0	0	1	0	1	7	29	64	204	310
of which: (Acute myocardial infarction)		I21	330	0	0	0	1	0	1	2	16	34	106	170
Other heart disease	35	I30-I33,I39-I52	180	0	0	0	0	0	3	2	6	14	54	101
Cerebrovascular disease	36	I60-I69	331	1	0	1	2	2	4	6	14	28	104	169
Other diseases of circulatory system			187	0	0	0	1	1	3	3	10	24	69	76

<b>Diseases of the Respiratory system</b>	<b>37</b>	<b>J00-J99</b>	<b>541</b>	<b>0</b>	<b>0</b>	<b>0</b>	<b>0</b>	<b>0</b>	<b>1</b>	<b>2</b>	<b>6</b>	<b>9</b>	<b>63</b>	<b>186</b>	<b>274</b>
Influenza	38	J10-J11	1	0	0	0	0	0	0	0	0	0	0	0	1
Pneumonia	39	J12-J19	244	0	0	0	0	0	0	1	4	3	13	65	158
Chronic Lower respiratory disease	40	J40-J47	180	0	0	0	0	0	0	0	2	4	35	79	60
of which: Asthma	41	J45-J46	12	0	0	0	0	0	0	0	1	0	3	3	5
Other diseases of the respiratory system			116	0	0	0	0	0	1	1	0	2	15	42	55
<b>Diseases of the Digestive system</b>	<b>42</b>	<b>K00-K93</b>	<b>154</b>	<b>1</b>	<b>0</b>	<b>0</b>	<b>0</b>	<b>0</b>	<b>0</b>	<b>3</b>	<b>9</b>	<b>16</b>	<b>24</b>	<b>45</b>	<b>56</b>
Ulcer of stomach, duodenum and jejunum	43	K25-K28	15	0	0	0	0	0	0	0	2	1	1	6	5
Chronic liver disease	44	K70,K73-K74	25	0	0	0	0	0	0	1	4	10	5	3	2
Other diseases of the digestive system			114	1	0	0	0	0	0	2	3	5	18	36	49
<b>Diseases of the skin and subcutaneous tissue</b>	<b>45</b>	<b>L00-L99</b>	<b>8</b>	<b>0</b>	<b>0</b>	<b>0</b>	<b>0</b>	<b>0</b>	<b>0</b>	<b>0</b>	<b>0</b>	<b>1</b>	<b>1</b>	<b>4</b>	<b>2</b>
<b>Diseases of the musculoskeletal system/connective tissue</b>	<b>46</b>	<b>M00-M99</b>	<b>35</b>	<b>0</b>	<b>0</b>	<b>0</b>	<b>0</b>	<b>0</b>	<b>1</b>	<b>0</b>	<b>1</b>	<b>5</b>	<b>3</b>	<b>10</b>	<b>15</b>
Rheumatoid arthritis and osteoarthritis	47	M05-M06,M15-M19	9	0	0	0	0	0	0	0	0	1	0	4	4
<b>Diseases of the genitourinary system</b>	<b>48</b>	<b>N00-N99</b>	<b>65</b>	<b>0</b>	<b>0</b>	<b>0</b>	<b>0</b>	<b>0</b>	<b>1</b>	<b>1</b>	<b>0</b>	<b>1</b>	<b>4</b>	<b>20</b>	<b>38</b>
Diseases of the kidney and ureter	49	N00-N29	43	0	0	0	0	0	0	1	0	1	3	12	26
<b>Complications of pregnancy, childbirth and puerperium</b>	<b>50</b>	<b>O00-O99</b>	<b>2</b>	<b>1</b>	<b>0</b>	<b>0</b>	<b>0</b>	<b>0</b>	<b>0</b>	<b>1</b>	<b>0</b>	<b>0</b>	<b>0</b>	<b>0</b>	<b>0</b>
<b>Certain conditions originating in the perinatal period<sup>1</sup></b>	<b>51</b>	<b>P00-P96</b>	<b>14</b>	<b>14</b>	<b>0</b>	<b>0</b>	<b>0</b>	<b>0</b>	<b>0</b>	<b>0</b>	<b>0</b>	<b>0</b>	<b>0</b>	<b>0</b>	<b>0</b>
<b>Congenital malformations and chromosomal abnormalities</b>	<b>52</b>	<b>Q00-Q99</b>	<b>25</b>	<b>18</b>	<b>2</b>	<b>1</b>	<b>1</b>	<b>1</b>	<b>0</b>	<b>1</b>	<b>0</b>	<b>1</b>	<b>0</b>	<b>1</b>	<b>0</b>
Congenital malformations of the:-															
Nervous system	53	Q00-Q07	3	2	0	0	1	0	0	0	0	0	0	0	0
Circulatory system	54	Q20-Q28	8	3	0	0	0	0	0	0	0	0	0	0	0
<b>Symptoms, signs, abnormal findings, ill-defined causes</b>	<b>55</b>	<b>R00-R99</b>	<b>14</b>	<b>3</b>	<b>1</b>	<b>0</b>	<b>0</b>	<b>0</b>	<b>0</b>	<b>0</b>	<b>1</b>	<b>1</b>	<b>0</b>	<b>1</b>	<b>7</b>
Sudden infant death syndrome	56	R95	3	3	0	0	0	0	0	0	0	0	0	0	0
Unknown and unspecified causes	57	R96-R99	6	0	1	0	0	0	0	0	1	1	0	1	2
<b>External causes of injury and poisoning</b>	<b>58</b>	<b>V01-Y89</b>	<b>133</b>	<b>0</b>	<b>0</b>	<b>3</b>	<b>10</b>	<b>11</b>	<b>11</b>	<b>9</b>	<b>24</b>	<b>15</b>	<b>14</b>	<b>22</b>	<b>25</b>
Accidents	59	V01-X59	94	0	0	3	6	6	6	2	16	9	12	15	25
of which: Transport accidents	60	V01-V99	26	0	0	3	5	2	2	1	5	2	3	5	0
Accidental falls	61	W00-W19	25	0	0	0	0	0	0	0	1	3	3	6	12
Accidental poisoning	62	X40-X49	18	0	0	0	0	0	3	1	8	3	3	0	0
other accidents			25	0	0	0	1	1	1	0	2	1	3	4	13
Suicide and intentional self harm	63	X60-X84	17	0	0	0	0	0	3	4	4	2	0	0	0
Homicide/assault	64	X85-Y09	2	0	0	0	0	0	1	0	1	0	0	0	0
Events of undetermined intent	65	Y10-Y34	11	0	0	0	0	0	1	3	3	2	0	2	0
All other external causes			9	0	0	0	0	0	0	0	0	0	2	5	0

<sup>1</sup> Stillbirths not included.

**Table 14 Infant and neonatal mortality by area of residence of deceased**

Area of residence	Infant mortality		Neonatal mortality	
	Number	Rate	Number	Rate
<b>STATE</b>	<b>90</b>	<b>4.7</b>	<b>62</b>	<b>3.3</b>
<b>LEINSTER</b>	<b>51</b>	<b>4.9</b>	<b>37</b>	<b>3.5</b>
Carlow	0	0.0	0	0.0
Dublin City	6	3.2	4	2.1
South Dublin	5	4.4	4	3.6
Fingal	11	7.9	8	5.8
Dun Laoghaire Rathdown	1	1.4	1	1.4
Kildare	2	2.0	2	2.0
Kilkenny	0	0.0	0	0.0
Laois	2	5.7	1	2.9
Longford	1	5.6	1	5.6
Louth	3	7.0	2	4.7
Meath	9	10.9	8	9.7
Offaly	4	11.1	2	5.6
Westmeath	0	0.0	0	0.0
Wexford	3	4.6	2	3.0
Wicklow	4	6.6	2	3.3
<b>MUNSTER</b>	<b>29</b>	<b>5.7</b>	<b>19</b>	<b>3.8</b>
Clare	2	4.4	1	2.2
Cork City	3	6.4	0	0.0
Cork County	7	4.2	3	1.8
Kerry	3	5.6	3	5.6
Limerick City	1	4.4	1	4.4
Limerick County	5	8.9	5	8.9
North Tipperary	1	3.1	1	3.1
South Tipperary	3	9.6	3	9.6
Waterford City	1	4.7	0	0.0
Waterford County	3	10.3	2	6.8
<b>CONNACHT</b>	<b>4</b>	<b>1.8</b>	<b>2</b>	<b>0.9</b>
Galway City	0	0.0	0	0.0
Galway County	1	1.2	1	1.2
Leitrim	0	0.0	0	0.0
Mayo	1	1.9	0	0.0
Roscommon	2	8.3	1	4.1
Sligo	0	0.0	0	0.0
<b>ULSTER (PART OF)</b>	<b>6</b>	<b>5.0</b>	<b>4</b>	<b>3.3</b>
Cavan	1	2.9	1	2.9
Donegal	4	6.6	3	5.0
Monaghan	1	4.1	0	0.0
<b>REGIONAL AUTHORITIES:</b>				
Border	9	4.4	6	2.9
Midland	7	5.5	4	3.1
West	4	2.2	2	1.1
Dublin	23	4.5	17	3.3
Mid-East	15	6.1	12	4.9
Mid-West	9	5.7	8	5.1
South-East	10	4.8	7	3.4
South-West	13	4.9	6	2.2

Infant mortality rates: Deaths of infants under one year per 1,000 live births, classified by area of residence of mother.

Neonatal mortality rates: Deaths of infants under 28 days per 1,000 live births, classified by area of residence of mother.

Infant and neonatal mortality rates in some areas, based on small numbers are subject to considerable fluctuation and caution should be exercised in their interpretation.



## **Appendix**

## Glossary of terms

### **NUTS III Regional Authority areas**

Border, Midland, West, Dublin, Mid-East, Mid-West, South-East, South-West

Border: Cavan, Donegal, Leitrim, Louth, Monaghan, Sligo.

Midland: Laois, Longford, Offaly, Westmeath.

West: Galway City, Galway County, Mayo, Roscommon.

Dublin: Dublin City, South Dublin, Fingal, Dun Laoghaire-Rathdown.

Mid-East: Kildare, Meath, Wicklow.

Mid-West: Clare, Limerick City, Limerick County, North Tipperary.

South-East: Carlow, Kilkenny, South Tipperary, Waterford City, Waterford County, Wexford.

South-West: Cork City, Cork County, Kerry.

**Causes of death Eurostat shortlist (August 1998)**

Nr	Disease or external cause	ICD-9 Code	ICD-10 Code
00	All causes of death	001-E999	A00-Y89
01	Infectious and Parasitic Diseases:-	001-139,279.8	A00-B99
02	Tuberculosis	010-018,137	A15-A19,B90
03	Meningococcal Infection	036	A39
04	AIDS (HIV Disease)	042-044,279.8	B20-B24
05	Viral Hepatitis	070	B15-B19
	other Infectious and Parasitic Diseases	Rem (001-139)	Rem (A00-B99)
06	Neoplasms	140-239	C00-D48
07	Malignant Neoplasms of the:-	140-208	C00-C97
08	Lip, Oral Cavity, Pharynx	140-149	C00-C14
09	Oesophagus	150	C15
10	Stomach	151	C16
11	Colon	153	C18
12	Rectum and Anus	154	C19-C20-C21
13	Liver and the Intrahepatic Bile Ducts	155	C22
14	Pancreas	157	C25
15	Larynx and Trachea/Bronchus/Lung	161-162	C32-C34
16	Skin	172	C43
17	Breast	174-175	C50
18	Cervix Uteri	180	C53
19	Other Parts of the Uterus	179,182	C54-C55
20	Ovary	183.0	C56
21	Prostate	185	C61
22	Kidney	189.0	C64
23	Bladder	188	C67
24	Lymph/Haematopoietic Tissue	200-208	C81-C96
	other Malignant Neoplasms	Rem (140-208)	Rem. (C00-C97)
25	Diseases of the Blood and Blood-forming Organs, Immunological disorders <sup>1</sup>	279-289	D50-D89
26	Endocrine, Nutritional and Metabolic Diseases	240-278	E00-E90
27	Diabetes Mellitus	250	E10-E14
28	Mental and Behavioural Disorders	290-319	F00-F99
29	Alcohol abuse (including Alcoholic Psychosis)	291,303	F10
30	Drug Dependence, Toxicomania	304-305	F11-F16,F18-F19
31	Diseases of the Nervous System and the Sense Organs	320-389	G00-H95
32	Meningitis	320-322	G00-G03
33	Diseases of the Circulatory System:-	390-459	I00-I99
34	Ischaemic Heart Disease	410-414	I20-I25
	<i>(Acute Myocardial Infarction)</i>	410	I21
35	Other Heart Disease	420-423,425-429	I30-I33,I39-I52
36	Cerebrovascular Disease	430-438	I60-I69
	other Diseases of the Circulatory System	Rem (390-459)	Rem. (I00-I99)
37	Diseases of the Respiratory System	460-519	J00-J99
38	Influenza	487	J10-J11
39	Pneumonia	480-486	J12-J18
40	Chronic Lower Respiratory Disease	490-494,496	J40-J47
41	Asthma	493	J45-J46
	other Diseases of the Respiratory System	Rem (460-519)	Rem. (J00-J99)
42	Diseases of the Digestive System	520-579	K00-K93
43	Ulcer of Stomach, Duodenum and Jejunum	531-534	K25-K28
44	Chronic Liver Disease	571.0-571.9	K70,K73-K74
	other Diseases of the Digestive System	Rem (520-579)	Rem. (K00-K93)
45	Diseases of the Skin and Subcutaneous Tissue	680-709	L00-L99
46	Diseases of the Musculoskeletal System/Connective Tissue	710-739	M00-M99
47	Rheumatoid Arthritis and Osteoarthritis	714-715	M05-M06,M15-M19
48	Diseases of the Genitourinary System	580-629	N00-N99
49	Diseases of the Kidney and Ureter	580-594	N00-N29
50	Complications of Pregnancy, Childbirth and Puerperium	630-676	O00-O99
51	Certain Conditions Originating in the Perinatal Period (stillbirths not included)	760-779	P00-P96
52	Congenital Malformations and Chromosomal Abnormalities	740-759	Q00-Q99
53	Congenital malformations of the Nervous System	740-742	Q00-Q07
54	Congenital malformations of the Circulatory System	745-747	Q20-Q28
55	Symptoms, Signs, Abnormal Findings, Ill-defined Causes	780-799	R00-R99
56	Sudden Infant Death Syndrome	798.0	R95
57	Unknown and Unspecified Causes	798.1-9,799	R96-R99
	Injury and Poisoning	800-999	S00-T98
58	External Causes of Injury and Poisoning (included in the Foregoing)	E800-E999	V01-Y89
59	Accidents	E800-E929	V01-X59
60	Transport Accidents	E800-E848	V01-V99
	Road transport Accidents	E810-E829, E929.0	V01-V80,V87,V89,Y85
	Motor vehicle transport Accidents	E810-E819	
61	Accidental Falls	E880-E888	W00-W19
62	Accidental Poisoning	E850-E869	X40-X49
	other accidents	Rem (E800-E929)	Rem (V01-X59)
63	Suicide and Intentional Self Harm	E950-E959	X60-X84
64	Homicide/Assault	E960-E969	X85-Y09
65	Cause Undetermined	E980-E989	Y10-Y34
	other External Causes	Rem (E930-E999)	

<sup>1</sup> 279.8 not included

**Estimated Population classified by Sex and Age Group, 2003 - 2008***thousands*

Sex and Age Group	Persons in April of each year					
	2003	2004	2005	2006 <sup>1</sup>	2007 <sup>2</sup>	2008 <sup>2</sup>
<b>Total Persons</b>	<b>3,979.9</b>	<b>4,045.2</b>	<b>4,133.8</b>	<b>4,239.8</b>	<b>4,339.0</b>	<b>4,422.1</b>
0 - 4 years	284.3	290.7	296.5	302.3	312.3	327.9
5 - 9 "	268.7	274.9	280.6	288.3	295.9	303.4
10 - 14 "	281.7	278.2	276.3	273.9	275.6	281.0
15 - 19 "	304.7	298.4	292.8	290.3	286.0	283.9
20 - 24 "	334.0	336.1	339.5	342.5	347.8	334.0
25 - 29 "	317.4	325.4	345.2	373.1	405.1	416.7
30 - 34 "	316.1	325.1	335.8	349.4	358.0	366.9
35 - 39 "	296.4	303.5	312.1	322.1	331.7	342.1
40 - 44 "	279.2	286.0	294.1	301.3	305.8	310.2
45 - 49 "	253.7	259.2	265.4	274.7	279.8	286.1
50 - 54 "	235.1	238.1	243.1	247.1	252.6	257.2
55 - 59 "	206.6	213.9	221.4	225.3	227.4	232.0
60 - 64 "	160.3	166.0	172.1	181.7	190.5	199.2
65 - 69 "	135.0	137.5	140.8	143.4	143.5	148.8
70 - 74 "	113.8	115.7	117.4	119.2	119.2	120.8
75 - 79 "	89.5	90.0	91.0	92.5	92.1	93.6
80 - 84 "	61.7	63.1	64.0	64.9	65.4	65.2
85 years and over	41.9	43.4	45.7	48.0	50.3	53.2
<b>Total males</b>	<b>1,976.9</b>	<b>2,011.9</b>	<b>2,061.8</b>	<b>2,121.2</b>	<b>2,171.1</b>	<b>2,206.3</b>
0 - 4 years	145.4	148.7	151.7	154.6	160.5	168.2
5 - 9 "	137.8	141.2	144.3	148.0	151.3	154.9
10 - 14 "	144.4	142.8	142.0	140.5	141.3	144.1
15 - 19 "	155.9	152.7	149.8	148.2	145.4	144.6
20 - 24 "	167.0	168.2	170.0	172.8	175.0	165.7
25 - 29 "	158.6	162.9	174.1	189.3	204.7	209.4
30 - 34 "	158.2	161.8	168.7	177.5	182.6	185.3
35 - 39 "	147.4	152.4	157.8	163.8	169.1	174.0
40 - 44 "	138.9	142.5	147.1	151.4	153.6	155.7
45 - 49 "	126.9	129.7	132.9	138.0	140.6	143.4
50 - 54 "	118.5	120.1	122.9	124.6	127.1	129.2
55 - 59 "	104.9	108.5	112.0	113.9	114.9	117.0
60 - 64 "	80.7	83.8	86.7	91.6	96.0	100.4
65 - 69 "	66.0	67.3	69.1	70.9	71.3	73.6
70 - 74 "	53.2	54.6	55.7	56.5	56.6	57.5
75 - 79 "	37.3	37.8	38.8	40.1	40.6	41.8
80 - 84 "	23.4	23.9	24.3	24.7	25.0	25.0
85 years and over	12.6	13.2	14.0	14.8	15.5	16.6
<b>Total females</b>	<b>2,002.9</b>	<b>2,033.3</b>	<b>2,072.0</b>	<b>2,118.7</b>	<b>2,167.9</b>	<b>2,215.8</b>
0 - 4 years	138.9	142.0	144.8	147.7	151.8	159.7
5 - 9 "	130.9	133.8	136.3	140.3	144.6	148.5
10 - 14 "	137.3	135.4	134.4	133.4	134.2	136.9
15 - 19 "	148.8	145.7	143.0	142.0	140.6	139.3
20 - 24 "	167.0	167.9	169.5	169.7	172.8	168.3
25 - 29 "	158.8	162.5	171.1	183.8	200.4	207.3
30 - 34 "	157.9	163.4	167.0	171.9	175.3	181.6
35 - 39 "	149.0	151.1	154.4	158.3	162.5	168.1
40 - 44 "	140.3	143.5	147.1	149.9	152.2	154.5
45 - 49 "	126.8	129.6	132.6	136.8	139.3	142.8
50 - 54 "	116.6	118.0	120.2	122.5	125.5	128.0
55 - 59 "	101.6	105.4	109.4	111.4	112.5	115.0
60 - 64 "	79.6	82.2	85.4	90.2	94.6	98.8
65 - 69 "	69.0	70.2	71.7	72.5	72.2	75.2
70 - 74 "	60.6	61.1	61.7	62.6	62.6	63.3
75 - 79 "	52.3	52.2	52.2	52.3	51.5	51.8
80 - 84 "	38.3	39.2	39.7	40.2	40.4	40.1
85 years and over	29.3	30.2	31.7	33.2	34.8	36.6

<sup>1</sup> De Facto<sup>2</sup> Preliminary