



Central Statistics Office
An Phríomh-Oifig Staidrimh

Vital Statistics

Fourth Quarter and Yearly Summary

2007

Published by the Stationery Office, Dublin, Ireland.

To be purchased from the:

Central Statistics Office, Information Section, Skehard Road, Cork,

Government Publications Sales Office, Sun Alliance House,
Molesworth Street, Dublin 2,

or through any bookseller.

Compiled by the Central Statistics Office on behalf of the Department of
Health and Children.

Prn A8/1327

[No. 575]

Price €10.00

August 2008

© Government of Ireland 2008

Material compiled and presented by
Central Statistics Office.

Reproduction is authorised, except for commercial
purposes, provided the source is acknowledged.

ISBN 0-4064-2065-4
ISSN 0790-7710

Contents

Fourth Quarter 2007

	Page
Commentary	6
Tables	
Table 1	10
Table 2	11
Table 3	12
Table 4	13
Table 5	14
Table 6	15
Table 7	16
Table 8	17
Table 9	18
Table 10	19
Table 11	20
Table 12	22
Table 13	24
Table 14	26

Note: Page 9 is blank

Contents

Yearly Summary 2007

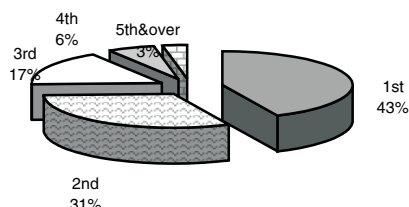
	Page
Commentary	28
Tables	
Table 1 Births registered, classified by age of mother at maternity between 2005 and 2007 and their corresponding annual age specific (asfr) and total period fertility rates (tpfr)	31
Table 2 Births registered, classified by area of residence of mother	32
Table 3 Births registered, classified by age of mother and previous number of liveborn children	33
Table 4 Number and percentage of births within and outside marriage, classified by age of mother	34
Table 5 Number and percentage of births registered within and outside marriage, classified by area of residence of mother	35
Table 6 Births registered, classified by area of residence and age of mother	36
Table 7 Births registered outside marriage, classified by area of residence and age of mother	37
Table 8 Deaths registered by county of residence of deceased	38
Table 9 Deaths registered by cause of death and county of residence of deceased	39
Table 10 Deaths registered, classified by cause and age group	40
Table 11 Male deaths registered, classified by cause and age group	42
Table 12 Female deaths registered, classified by cause and age group	44
Table 13 Infant and neonatal mortality by area of residence of deceased	46
Table 14 Divorce, Judicial Separation and Nullity applications received and granted by the courts in year ending December 2007	47
Note: Page 48 is blank	
Appendix	
Glossary of terms	50
Cause of death Eurostat shortlist (August 1998)	51
Table 1 Estimated population classified by sex and age group, 2002-2007	52
Table 2 Deaths which were registered on the authority of the Registrar General in 2007, classified by principal groups of causes, sex and year of occurrence	53

Fourth Quarter 2007

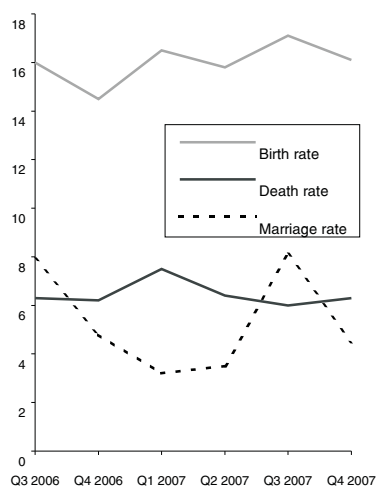
4th Quarter 2007

Commentary

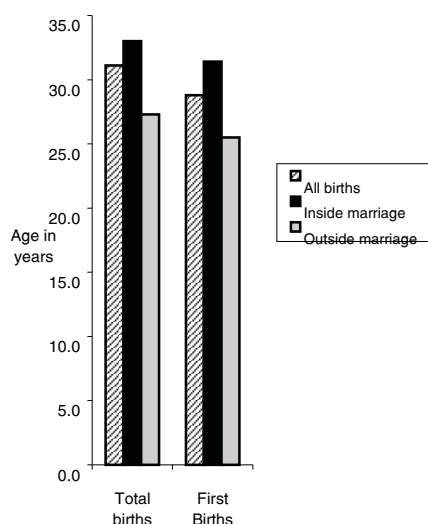
Birth Order Q4 2007



Annual birth, death and marriage rates per 1,000 population



Average age at maternity Q4 2007



Introduction

This report has been prepared by the Central Statistics Office for the Minister for Health and Children in accordance with the provisions of Section 2 of the Vital Statistics and Births, Deaths and Marriages Registration Act, 1952 and Section 73 of the Civil Registration Act 2004.

Births

There were 17,466 births registered in quarter 4 of 2007, 8,951 males and 8,515 females, an increase of 2,086 on the quarter 4 figure of 2006. The quarter 4 2007 total is 41% higher than in 1998 when 12,390 babies were registered.

This represents an annual birth rate of 16.1 per 1,000 of the population, 1.6 above quarter 4 of 2006. This rate is 2.7 per 1,000 population higher than in 1998.

Birth order

A total of 7,483 births (42.8%) were to first time mothers in quarter 4 of 2007. Second time mothers had 5,408 births (31%) (see Table 4). This compares to 5,053 (41%) first births registered in quarter 4 1998.

Age of mothers

The average age of mothers for births registered in quarter 4 2007 was 31.1 years, 0.1 years higher than the corresponding figure in quarter 4 2006, and 1.0 years more than in quarter 4 1998 (see Table 1). The average age of mothers having their first child in quarter 4 2007 was 28.8 years (see Table 7).

Births outside marriage

There were 5,818 births registered as outside marriage in quarter 4 of 2007. This accounted for 33.3% of all births, a decrease of 0.6% on quarter 4 2006. The highest percentage of births outside marriage occurred in Limerick City at 56%, while the lowest percentage was in Clare at 23% (see Table 6). In quarter 4 1998, 3,683 births were registered outside marriage or 29.7% of all births.

Deaths

There were 6,783 deaths registered in quarter 4 2007, 3,528 males and 3,255 females. This represents an annual death rate of 6.3 per 1,000 population.

Age at death

There were 65 infant deaths registered in quarter 4 2007 giving an infant mortality rate of 3.7 deaths per 1,000 live births. Neonatal deaths are deaths of infants at ages under 4 weeks. There were 46 neonatal deaths registered in quarter 4 2007, a neonatal mortality rate of 2.6 deaths per 1,000 live births.

There were 5,128 deaths of persons aged 65 and over registered in quarter 4 2007. This represents an annual death rate of 43.6 per 1,000 population aged 65 and over.

Cause of death

• Diseases of the Circulatory System:

Diseases of the Circulatory System accounted for 2,302 deaths, or an annual rate of 2.1 per 1,000 population. Of these, 1,253 were due to Ischaemic Heart Disease and 457 to Cerebrovascular Disease.

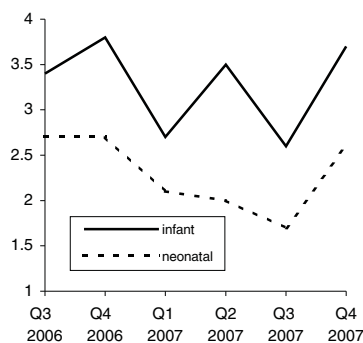
• Malignant Neoplasms:

There were 1,937 deaths from malignant neoplasms. This is equivalent to an annual rate of 1.8 per 1,000 population.

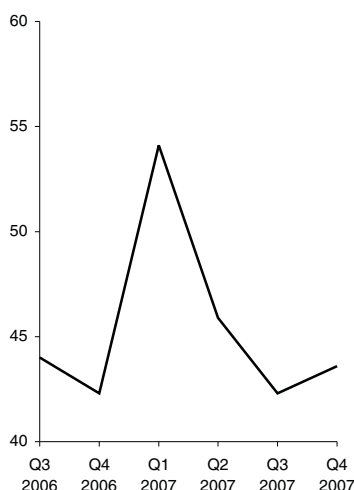
• Diseases of the Respiratory System:

Deaths from pneumonia numbered 267; chronic lower respiratory disease accounted for 344 deaths and 162 deaths resulted from other respiratory diseases.

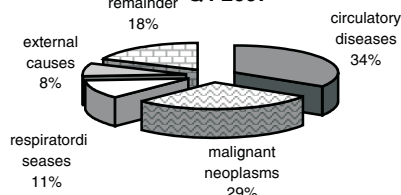
Infant and neonatal mortality rates per 1,000 live births



Death rates for ages 65 & over per 1,000 relevant population



Principal causes of death Q4 2007



Marriages

The number of marriages registered during the quarter was 4,876 equivalent to an annual marriage rate of 4.5 per 1,000 population, 0.3 below the corresponding quarter of 2006. The quarter 4 2007 total is 24% higher than in quarter 4 1998 when 3,922 marriages were registered.

Population

The estimated population in April 2007 was 4,339,000.

Methodology

All figures in this report are classified by quarter of registration. Delay in the registration of some births, deaths and marriages result in them being included in a later period in these quarterly reports.

Changes in Methodology (Deaths)

This publication continues with the 3 major changes in the methods by which mortality statistics are compiled. These changes were introduced in the Vital Statistics First Quarter 2007 publication.

- 1 Underlying Cause of Death is classified according to International Classification of Diseases, Version 10 (ICD10) instead of to International Classification of Diseases, Version 9 (ICD9).
- 2 Deaths where there was not an inquest have been coded using the automated coding system developed by the U.S National Centre for Health Statistics (NCHS). Previously the Underlying Cause of Death was chosen manually for all deaths.
- 3 All deaths registered in the Quarter have been included in the statistics, in some cases with a provisional cause of death. Previously the practice was not to include deaths in the quarterly statistics until the cause of death had been definitely established.

Because of these changes, caution should be taken in directly comparing these mortality statistics with those of previous quarters. Many countries have found that moving to ICD10 does affect certain specific categories of causes of death. In particular, a significant drop in the number of deaths attributed to pneumonia and bronchopneumonia has been observed in some countries after moving to ICD10. These deaths were instead assigned to other conditions included on the death certificate.

The effect of the third change above has been to increase the number of deaths in our statistics as compared with previous years. Statistics for deaths due to external causes are particularly affected by this change. The previous method meant that some deaths were included in a later quarter of the year from when they had been registered, because of the delay involved in establishing a definite cause of death.

To aid comparability, we are currently completing a Bridge Coding study based on deaths registered in 2005. In this study, deaths that were previously coded in ICD9 using manual coding are being recoded independently in ICD10 using the automated system. The resulting differences in the number of deaths assigned to specific causes using the respective methods will give us a good insight into the effect of these changes on future mortality statistics. This study will be published in 2008.

Table 1 Marriages, births, deaths and natural increase

	Marriages ¹	Live Births				Deaths				Natural Increase
		Total	First	Outside marriage	Average Age	Total	Infant	Neonatal	65 & over	
Quarter 1										
1998	1,642	13,405	5,209	3,875	30.0	8,927	82	52	7,244	4,478
1999	2,064	13,388	5,491	4,275	30.0	9,867	80	61	8,104	3,521
2000	2,200	13,984	5,693	4,656	30.0	9,804	86	59	8,062	4,180
2001	2,168	14,785	5,963	4,877	30.1	8,408	81	56	6,747	6,377
2002	2,484	14,972	6,127	4,877	30.3	7,749	73	51	6,281	7,223
2003	2,571	15,238	6,158	5,080	30.3	7,756	67	52	6,259	7,482
2004	2,676	15,599	6,082	5,181	30.7	7,873	72	56	6,347	7,726
2005	2,892	15,334	6,290	5,147	30.9	7,352	65	47	5,920	7,982
2006	3,267	15,958	6,449	5,481	30.9	7,320	56	36	6,040	8,638
2007	3,399	17,473	7,207	5,905	31.1	7,910 ²	48	37 ³	6,326	9,563
Quarter 2										
1998	3,689	13,729	5,181	3,674	30.1	8,021	88	56	6,421	5,708
1999	4,577	13,585	5,299	4,053	30.2	7,777	79	55	6,155	5,808
2000	4,670	13,794	5,427	4,260	30.3	7,650	77	52	5,974	6,144
2001	4,533	14,303	5,615	4,307	30.5	7,260	74	55	5,808	7,043
2002	4,810	15,247	5,858	4,672	30.5	7,680	91	64	6,074	7,567
2003	4,827	15,582	6,095	4,689	30.6	7,203	83	59	5,625	8,379
2004	4,719	15,535	5,897	4,874	30.8	6,881	74	53	5,351	8,654
2005	5,374	15,306	5,922	4,810	31.1	7,349	70	52	5,826	7,957
2006	5,094	15,979	6,315	5,056	31.1	6,967	65	44	5,488	9,012
2007	5,536	17,127	6,901	5,428	31.2	6,902 ²	60	34	5,394	10,225
Quarter 3										
1998	7,530	14,027	5,552	3,901	30.1	7,187	72	57	5,625	6,840
1999	7,342	13,840	5,635	4,323	30.0	6,645	70	44	5,218	7,195
2000	7,593	13,967	5,641	4,451	30.2	6,832	89	54	5,372	7,135
2001	7,557	14,688	5,901	4,472	30.3	6,974	97	67	5,403	7,714
2002	7,580	15,593	6,333	4,855	30.4	6,941	68	50	5,391	8,652
2003	7,996	15,909	6,240	4,981	30.6	6,639	85	68	5,147	9,270
2004	8,168	15,605	6,171	5,100	30.8	6,473	72	43	5,123	9,132
2005	8,347	16,170	6,548	5,101	30.9	6,380	50	33	4,919	9,790
2006	8,341	16,920	6,891	5,541	31.0	6,657	58	46	5,146	10,263
2007	8,733	18,554	7,643	6,019	31.1	6,455 ²	48	32	4,976	12,099
Quarter 4										
1998	3,922	12,390	5,053	3,683	30.1	7,217	88	67	5,566	5,173
1999	4,543	12,541	5,139	3,810	30.2	7,394	64	48	5,815	5,147
2000	4,705	12,494	5,236	3,868	30.2	6,829	70	53	5,324	5,665
2001	4,988	14,106	5,915	4,393	30.3	7,170	85	57	5,422	6,936
2002	5,682	14,709	5,989	4,411	30.5	6,978	74	49	5,378	7,731
2003	4,908	14,788	5,883	4,563	30.7	7,225	76	52	5,568	7,563
2004	5,056	14,945	5,975	4,783	30.9	6,924	82	62	5,253	8,021
2005	4,742	14,232	5,861	4,470	31.1	6,360	59	45	4,827	7,872
2006	5,139	15,380	6,456	5,217	31.0	6,535	58	42	4,946	8,845
2007	4,876	17,466	7,483	5,818	31.1	6,783	65	46	5,128	10,683
Total										
1998	16,783	53,551	20,995	15,133	30.1	31,352	330	232	24,856	22,199
1999	18,526	53,354	21,564	16,461	30.1	31,683	293	208	25,292	21,671
2000	19,168	54,239	21,997	17,235	30.2	31,115	322	218	24,732	23,124
2001	19,246	57,882	23,394	18,049	30.3	29,812	337	235	23,380	28,070
2002	20,556	60,521	24,307	18,815	30.4	29,348	306	214	23,124	31,173
2003	20,302	61,517	24,376	19,313	30.6	28,823	311	231	22,599	32,694
2004	20,619	61,684	24,125	19,938	30.8	28,151	300	214	22,074	33,533
2005	21,355	61,042	24,621	19,528	31.0	27,441	244	177	21,492	33,601
2006	21,841	64,237	26,111	21,295	31.0	27,479	237	168	21,620	36,758
2007	22,544	70,620	29,269	23,170	31.1	28,050	221	149	21,824	42,570

¹ 2002 and 2005 marriage figures are final. All other marriage figures are subject to revision.² Not directly comparable with previous quarters. See 'Commentary' for changes in methodology.³ Revised data.

Table 2 Annual marriage, birth, death and natural increase rates per 1,000 population

	Marriages	Live Births			Deaths				Natural Increase
		Total	% First births ¹	% Outside marriage	Total	Infant Mortality ²	Neonatal Mortality ³	65 & over	
Quarter 1									
1998	1.8	14.6	39.0	28.9	9.7	6.1	3.9	69.6	4.9
1999	2.2	14.5	41.1	31.9	10.7	6.0	4.6	77.1	3.8
2000	2.4	14.9	40.9	33.3	10.5	6.1	4.2	76.4	4.5
2001	2.3	15.6	40.5	33.0	8.9	5.5	3.8	63.5	6.7
2002	2.6	15.6	41.2	32.6	8.1	4.9	3.4	58.5	7.5
2003	2.6	15.6	40.7	33.3	7.9	4.4	3.4	57.4	7.6
2004	2.7	15.7	40.4	33.2	7.9	4.6	3.6	57.3	7.8
2005	2.9	15.2	41.3	33.6	7.3	4.2	3.1	52.5	7.9
2006	3.2	15.5	41.1	34.3	7.1	3.5	2.3	52.4	8.4
2007	3.2	16.5	42.8	33.8	7.5 ⁴	2.7	2.1 ⁵	54.1	9.0
Quarter 2									
1998	4.0	14.8	37.9	26.8	8.7	6.4	4.1	61.1	6.2
1999	4.9	14.5	39.2	29.8	8.3	5.8	4.0	58.4	6.2
2000	4.9	14.6	39.5	30.9	8.1	5.6	3.8	56.3	6.5
2001	4.7	14.9	39.5	30.1	7.5	5.2	3.8	54.1	7.3
2002	4.9	15.6	38.8	30.6	7.8	6.0	4.2	55.7	7.7
2003	4.9	15.7	39.5	30.1	7.2	5.3	3.8	50.8	8.4
2004	4.7	15.4	38.8	31.4	6.8	4.8	3.4	47.5	8.6
2005	5.2	14.8	38.8	31.4	7.1	4.6	3.4	50.6	7.7
2006	4.8	15.1	41.1	31.6	6.6	4.1	2.8	46.9	8.5
2007	5.1	15.8	42.0	31.7	6.4 ⁴	3.5	2.0	45.9	9.4
Quarter 3									
1998	8.1	15.2	39.7	27.8	7.8	5.1	4.1	53.5	7.4
1999	7.8	14.8	40.9	31.2	7.1	5.1	3.2	49.5	7.7
2000	8.0	14.7	40.6	31.9	7.2	6.4	3.9	50.6	7.5
2001	7.9	15.3	40.4	30.4	7.3	6.6	4.6	50.3	8.0
2002	7.7	15.9	41.0	31.1	7.1	4.4	3.2	49.5	8.8
2003	8.0	16.0	39.6	31.3	6.7	5.3	4.3	46.5	9.3
2004	8.1	15.4	39.8	32.7	6.4	4.6	2.8	45.4	9.0
2005	8.1	15.7	40.7	31.5	6.2	3.1	2.0	42.7	9.5
2006	7.9	16.0	41.6	32.7	6.3	3.4	2.7	44.0	9.7
2007	8.1	17.1	41.4	32.4	6.0 ⁴	2.6	1.7	42.3	11.2
Quarter 4									
1998	4.2	13.4	41.0	29.7	7.8	7.1	5.4	53.0	5.6
1999	4.9	13.4	41.1	30.4	7.9	5.1	3.8	55.1	5.5
2000	5.0	13.2	42.1	31.0	7.2	5.6	4.2	50.1	6.0
2001	5.2	14.7	42.2	31.1	7.5	6.0	4.0	50.5	7.2
2002	5.8	15.0	41.2	30.0	7.1	5.0	3.3	49.3	7.9
2003	4.9	14.9	40.9	30.9	7.3	5.1	3.5	50.3	7.6
2004	5.0	14.8	40.3	32.0	6.8	5.5	4.1	46.6	7.9
2005	4.6	13.8	41.4	31.4	6.2	4.1	3.2	41.9	7.6
2006	4.8	14.5	42.3	33.9	6.2	3.8	2.7	42.3	8.3
2007	4.5	16.1	42.8	33.3	6.3	3.7	2.6	43.6	10.1
Total									
1998	4.5	14.5	39.4	28.3	8.5	6.2	4.3	59.2	6.0
1999	5.0	14.3	40.6	30.9	8.5	5.5	3.9	59.9	5.8
2000	5.1	14.3	40.8	31.8	8.2	5.9	4.0	58.2	6.1
2001	5.0	15.0	40.7	31.2	7.7	5.8	4.1	54.4	7.3
2002	5.2	15.5	40.5	31.1	7.5	5.1	3.5	53.0	8.0
2003	5.1	15.5	40.2	31.4	7.2	5.1	3.8	51.0	8.2
2004	5.1	15.3	39.8	32.3	7.0	4.9	3.5	49.0	8.3
2005	5.2	14.8	40.5	32.0	6.6	4.0	2.9	46.7	8.1
2006	5.2	15.2	41.5	33.2	6.5	3.7	2.6	46.2	8.7
2007	5.2	16.3	41.9	32.8	6.5	3.1	2.1	46.4	9.8

¹ First births divided by the total number of live births (excluding those with unstated parity), multiplied by 100.² Infant mortality is the number of infant deaths per 1,000 live births.³ Neonatal mortality is the number of neonatal (infants aged under 4 weeks) deaths per 1,000 live births.⁴ Not directly comparable with previous quarters. See 'Commentary' for changes in methodology.⁵ Revised data.

Table 3 Births registered, classified by area of residence of mother

	Total	Male	Female	Rate ^(a)
STATE	17,466	8,951	8,515	16.1
LEINSTER	10,002	5,085	4,917	17.0
Carlow	231	126	105	17.9
Dublin City	1,833	959	874	14.2
South Dublin	1,113	568	545	17.6
Fingal	1,251	652	599	20.4
Dun Laoghaire Rathdown	629	315	314	12.7
Kildare	992	496	496	20.8
Kilkenny	289	157	132	12.9
Laois	314	158	156	18.3
Longford	146	69	77	16.6
Louth	530	252	278	18.6
Meath	856	432	424	20.5
Offaly	285	134	151	15.7
Westmeath	377	188	189	18.6
Wexford	577	282	295	17.1
Wicklow	579	297	282	17.9
MUNSTER	4,598	2,381	2,217	15.3
Clare	422	224	198	14.9
Cork City	338	167	171	11.1
Cork County	1,566	792	774	16.9
Kerry	514	255	259	14.4
Limerick City	208	105	103	15.5
Limerick County	518	276	242	15.4
North Tipperary	305	159	146	18.1
South Tipperary	287	160	127	13.5
Waterford City	193	106	87	16.5
Waterford County	247	137	110	15.5
CONNACHT	1,922	993	929	14.9
Galway City	235	112	123	12.7
Galway County	713	360	353	17.5
Leitrim	107	56	51	14.4
Mayo	455	236	219	14.4
Roscommon	211	111	100	14.0
Sligo	201	118	83	12.9
ULSTER (PART OF)	944	492	452	13.8
Cavan	226	119	107	13.8
Donegal	528	268	260	14.0
Monaghan	190	105	85	13.3
REGIONAL AUTHORITIES:				
Border	1,782	918	864	14.8
Midland	1,122	549	573	17.2
West	1,614	819	795	15.4
Dublin	4,826	2,494	2,332	15.9
Mid-East	2,427	1,225	1,202	19.6
Mid-West	1,453	764	689	15.9
South-East	1,824	968	856	15.4
South-West	2,418	1,214	1,204	15.3

(a) Births per year per 1,000 population. Annual rates based on estimated 2007 population.

Table 4 Births registered, classified by age of mother and previous number of liveborn children

Age of mother at maternity	Previous number of liveborn children							
	Total	0	1	2	3	4	5 or more	Not stated ^(a)
All ages	17,466	7,483	5,408	2,895	1,026	323	201	130
15 and under	12	12	-	-	-	-	-	-
16	42	40	2	-	-	-	-	-
17	92	89	3	-	-	-	-	-
18	166	156	9	1	-	-	-	-
19	316	282	31	3	-	-	-	-
Under 20	628	579	45	4	-	-	-	-
20	315	253	53	8	1	-	-	-
21	410	306	84	18	2	-	-	-
22	441	301	111	19	4	2	1	3
23	484	296	144	38	5	1	-	-
24	572	336	165	53	14	1	-	3
20-24	2,222	1,492	557	136	26	4	1	6
25	632	325	199	77	18	4	2	7
26	657	350	181	82	30	4	3	7
27	798	392	263	100	24	6	7	6
28	892	458	267	103	36	15	4	9
29	1,050	510	307	161	47	10	7	8
25-29	4,029	2,035	1,217	523	155	39	23	37
30	1,095	504	373	138	46	19	10	5
31	1,152	502	397	169	53	16	6	9
32	1,216	465	421	205	72	21	19	13
33	1,212	435	445	224	64	25	11	8
34	1,175	359	428	257	84	23	14	10
30-34	5,850	2,265	2,064	993	319	104	60	45
35	1,142	326	368	295	93	25	24	11
36	1,008	275	347	243	94	21	22	6
37	785	170	279	207	92	26	5	6
38	590	118	168	181	72	29	13	9
39	446	89	135	134	58	18	11	1
35-39	3,971	978	1,297	1,060	409	119	75	33
40	313	50	101	71	53	20	15	3
41	218	40	62	55	27	18	14	2
42	104	18	31	26	18	3	8	-
43	60	10	14	14	14	4	1	3
44	35	6	11	7	3	5	2	1
40-44	730	124	219	173	115	50	40	9
45 and over	31	8	8	4	2	7	2	-
Age not stated	5	2	1	2	-	-	-	-

Table 5 Number and percentage of births registered within and outside marriage, classified by age of mother

Age of mother at maternity	Total	Married parents	Unmarried Parents		% to married parents	% to unmarried parents	
			Total	Same address		Total	Same address
	Number				Percentage		
All ages	17,466	11,648	5,818	2,980	67	33	17
15 and under	12	1	11	1	8	92	8
16	42	1	41	4	2	98	10
17	92	2	90	11	2	98	12
18	166	13	153	35	8	92	21
19	316	32	284	54	10	90	17
Under 20	628	49	579	105	8	92	17
20	315	43	272	79	14	86	25
21	410	71	339	135	17	83	33
22	441	88	353	165	20	80	37
23	484	127	357	163	26	74	34
24	572	198	374	177	35	65	31
20-24	2,222	527	1,695	719	24	76	32
25	632	227	405	236	36	64	37
26	657	314	343	200	48	52	30
27	798	434	364	215	54	46	27
28	892	553	339	206	62	38	23
29	1,050	744	306	176	71	29	17
25-29	4,029	2,272	1,757	1,033	56	44	26
30	1,095	824	271	166	75	25	15
31	1,152	914	238	147	79	21	13
32	1,216	1003	213	137	82	18	11
33	1,212	1006	206	134	83	17	11
34	1,175	994	181	111	85	15	9
30-34	5,850	4,741	1,109	695	81	19	12
35	1,142	999	143	96	87	13	8
36	1,008	858	150	88	85	15	9
37	785	677	108	68	86	14	9
38	590	504	86	58	85	15	10
39	446	381	65	45	85	15	10
35-39	3,971	3,419	552	355	86	14	9
40	313	275	38	23	88	12	7
41	218	175	43	20	80	20	9
42	104	85	19	14	82	18	13
43	60	50	10	8	83	17	13
44	35	28	7	5	80	20	14
40-44	730	613	117	70	84	16	10
45 and over	31	23	8	3	74	26	10
Age not stated	5	4	1	-	80	20	-

Table 6 Number and percentage of births registered within and outside marriage, classified by area of residence of mother

Area of residence	Total	Married parents	Unmarried Parents		% to married parents	% to unmarried parents	
			Total	Same address		Total	Same address
	Number				Percentage		
STATE	17,466	11,648	5,818	2,980	67	33	17
LEINSTER	10,002	6,475	3,527	1,745	65	35	17
Carlow	231	146	85	52	63	37	23
Dublin City	1,833	1,022	811	304	56	44	17
South Dublin	1,113	649	464	180	58	42	16
Fingal	1,251	885	366	215	71	29	17
Dun Laoghaire Rathdown	629	476	153	64	76	24	10
Kildare	992	701	291	166	71	29	17
Kilkenny	289	210	79	48	73	27	17
Laois	314	205	109	63	65	35	20
Longford	146	110	36	18	75	25	12
Louth	530	315	215	109	59	41	21
Meath	856	593	263	173	69	31	20
Offaly	285	174	111	51	61	39	18
Westmeath	377	259	118	68	69	31	18
Wexford	577	341	236	129	59	41	22
Wicklow	579	389	190	105	67	33	18
MUNSTER	4,598	3,152	1,446	752	69	31	16
Clare	422	324	98	65	77	23	15
Cork City	338	168	170	48	50	50	14
Cork County	1,566	1,170	396	242	75	25	15
Kerry	514	368	146	73	72	28	14
Limerick City	208	92	116	38	44	56	18
Limerick County	518	361	157	97	70	30	19
North Tipperary	305	212	93	57	70	30	19
South Tipperary	287	176	111	54	61	39	19
Waterford City	193	109	84	38	56	44	20
Waterford County	247	172	75	40	70	30	16
CONNACHT	1,922	1,395	527	332	73	27	17
Galway City	235	169	66	41	72	28	17
Galway County	713	545	168	121	76	24	17
Leitrim	107	72	35	25	67	33	23
Mayo	455	339	116	62	75	25	14
Roscommon	211	147	64	40	70	30	19
Sligo	201	123	78	43	61	39	21
ULSTER (PART OF)	944	626	318	151	66	34	16
Cavan	226	145	81	49	64	36	22
Donegal	528	352	176	69	67	33	13
Monaghan	190	129	61	33	68	32	17
REGIONAL AUTHORITIES:							
Border	1,782	1,136	646	328	64	36	18
Midland	1,122	748	374	200	67	33	18
West	1,614	1,200	414	264	74	26	16
Dublin	4,826	3,032	1,794	763	63	37	16
Mid-East	2,427	1,683	744	444	69	31	18
Mid-West	1,453	989	464	257	68	32	18
South-East	1,824	1,154	670	361	63	37	20
South-West	2,418	1,706	712	363	71	29	15

Table 7 Births registered, classified by area of residence and age of mother

Area of residence	Total	Under 20	20-24	25-29	30-34	35-39	40 and over	Age not stated	Average age of mother at maternity	
									Total	First
STATE	17,466	628	2,222	4,029	5,850	3,971	761	5	31.1	28.8
LEINSTER	10,002	386	1,328	2,310	3,312	2,262	401	3	31.0	28.8
Carlow	231	12	43	60	64	46	6	-	29.9	27.4
Dublin City	1,833	84	296	434	505	437	77	-	30.7	28.9
South Dublin	1,113	46	165	306	370	183	43	-	30.2	28.0
Fingal	1,251	39	144	282	443	302	41	-	31.3	29.2
Dun Laoghaire Rathdown	629	11	46	75	227	212	58	-	33.5	31.5
Kildare	992	39	98	196	388	233	38	-	31.4	29.2
Kilkenny	289	10	23	53	113	76	14	-	32.0	29.8
Laois	314	11	54	75	111	55	8	-	30.3	27.7
Longford	146	3	24	35	37	40	7	-	31.2	28.2
Louth	530	29	79	139	159	110	14	-	30.3	27.6
Meath	856	34	84	207	320	186	24	1	31.1	28.8
Offaly	285	14	43	83	85	51	8	1	30.1	27.3
Westmeath	377	17	57	92	122	68	20	1	30.6	27.9
Wexford	577	22	98	140	162	130	25	-	30.6	28.4
Wicklow	579	15	74	133	206	133	18	-	31.1	29.0
MUNSTER	4,598	149	563	1,029	1,554	1,084	219	-	31.3	29.0
Clare	422	10	50	72	157	117	16	-	31.9	30.3
Cork City	338	17	73	86	83	69	10	-	29.6	27.2
Cork County	1,566	41	138	341	573	391	82	-	31.9	29.6
Kerry	514	10	60	114	168	128	34	-	31.8	28.8
Limerick City	208	16	44	44	67	31	6	-	29.2	26.2
Limerick County	518	13	63	111	182	127	22	-	31.4	29.4
North Tipperary	305	11	28	76	96	77	17	-	31.7	28.9
South Tipperary	287	12	42	70	84	58	21	-	30.9	28.5
Waterford City	193	13	45	56	47	28	4	-	28.7	26.5
Waterford County	247	6	20	59	97	58	7	-	31.7	29.6
CONNACHT	1,922	50	212	449	661	442	106	2	31.5	29.3
Galway City	235	9	31	63	80	44	8	-	30.5	29.2
Galway County	713	14	64	149	267	178	39	2	32.1	29.7
Leitrim	107	2	18	26	32	21	8	-	31.0	28.6
Mayo	455	11	49	104	159	101	31	-	31.7	29.5
Roscommon	211	7	24	57	59	54	10	-	31.4	29.4
Sligo	201	7	26	50	64	44	10	-	30.9	27.8
ULSTER (PART OF)	944	43	119	241	323	183	35	-	30.7	27.9
Cavan	226	10	30	52	70	54	10	-	31.1	28.1
Donegal	528	24	69	134	192	93	16	-	30.5	28.0
Monaghan	190	9	20	55	61	36	9	-	30.7	27.7
REGIONAL AUTHORITIES:										
Border	1,782	81	242	456	578	358	67	-	30.6	27.9
Midland	1,122	45	178	285	355	214	43	2	30.5	27.7
West	1,614	41	168	373	565	377	88	2	31.7	29.5
Dublin	4,826	180	651	1,097	1,545	1,134	219	-	31.1	29.1
Mid-East	2,427	88	256	536	914	552	80	1	31.2	29.0
Mid-West	1,453	50	185	303	502	352	61	-	31.3	29.1
South-East	1,824	75	271	438	567	396	77	-	30.7	28.4
South-West	2,418	68	271	541	824	588	126	-	31.6	29.1

Table 8 Births registered outside marriage, classified by area of residence and age of mother

Area of residence	Total	Under 25	25-29	30-34	35-39	40 and over	Age not stated	Average age of mother at maternity	
								Total	First
STATE	5,818	2,274	1,757	1,109	552	125	1	27.3	25.5
LEINSTER	3,527	1,354	1,073	690	333	77	-	27.4	25.6
Carlow	85	41	28	8	7	1	-	26.1	24.7
Dublin City	811	295	241	151	103	21	-	27.8	26.0
South Dublin	464	175	156	96	29	8	-	27.1	25.2
Fingal	366	134	116	71	35	10	-	27.4	25.7
Dun Laoghaire Rathdown	153	49	34	35	23	12	-	29.4	27.7
Kildare	291	112	89	63	22	5	-	27.1	25.7
Kilkenny	79	27	25	19	7	1	-	27.3	25.5
Laois	109	49	32	14	12	2	-	26.8	24.5
Longford	36	17	11	4	4	-	-	26.7	25.2
Louth	215	90	67	35	21	2	-	26.8	25.3
Meath	263	89	83	68	21	2	-	27.6	25.6
Offaly	111	49	34	20	7	1	-	26.5	24.7
Westmeath	118	59	32	21	3	3	-	26.1	24.0
Wexford	236	102	69	37	22	6	-	27.1	25.5
Wicklow	190	66	56	48	17	3	-	27.9	25.8
MUNSTER	1,446	583	432	275	132	24	-	27.1	25.4
Clare	98	43	21	22	9	3	-	27.5	25.6
Cork City	170	75	52	31	7	5	-	26.6	24.9
Cork County	396	147	122	82	39	6	-	27.4	26.1
Kerry	146	56	46	28	14	2	-	27.4	24.9
Limerick City	116	51	30	27	7	1	-	26.6	23.9
Limerick County	157	62	46	31	18	-	-	27.1	25.2
North Tipperary	93	35	29	11	14	4	-	28.1	26.3
South Tipperary	111	48	35	20	8	-	-	26.3	24.8
Waterford City	84	43	28	5	7	1	-	25.6	24.1
Waterford County	75	23	23	18	9	2	-	28.4	26.4
CONNACHT	527	191	166	96	56	17	1	27.7	26.0
Galway City	66	21	20	12	12	1	-	28.0	27.2
Galway County	168	62	50	36	17	2	1	27.5	25.5
Leitrim	35	15	9	7	1	3	-	27.6	25.8
Mayo	116	37	37	24	11	7	-	28.3	27.0
Roscommon	64	27	19	8	9	1	-	27.6	25.9
Sligo	78	29	31	9	6	3	-	26.9	24.5
ULSTER (PART OF)	318	146	86	48	31	7	-	26.6	24.4
Cavan	81	37	20	16	6	2	-	26.9	24.7
Donegal	176	87	43	27	15	4	-	26.3	24.3
Monaghan	61	22	23	5	10	1	-	27.1	24.6
REGIONAL AUTHORITIES:									
Border	646	280	193	99	59	15	-	26.8	24.8
Midland	374	174	109	59	26	6	-	26.5	24.5
West	414	147	126	80	49	11	1	27.8	26.3
Dublin	1,794	653	547	353	190	51	-	27.7	25.9
Mid-East	744	267	228	179	60	10	-	27.5	25.7
Mid-West	464	191	126	91	48	8	-	27.3	25.2
South-East	670	284	208	107	60	11	-	26.8	25.2
South-West	712	278	220	141	60	13	-	27.2	25.6

Table 9 Deaths registered by county of residence of deceased

Area of residence	Total	Male	Female	Rate ^(a)
STATE	6,783	3,528	3,255	6.3
LEINSTER	3,357	1,702	1,655	5.7
Carlow	77	43	34	6.0
Dublin City	1,000	494	506	7.7
South Dublin	194	106	88	3.1
Fingal	184	92	92	3.0
Dun Laoghaire Rathdown	286	125	161	5.8
Kildare	185	103	82	3.9
Kilkenny	140	78	62	6.2
Laois	94	54	40	5.5
Longford	72	35	37	8.2
Louth	171	81	90	6.0
Meath	200	110	90	4.8
Offaly	102	60	42	5.6
Westmeath	196	96	100	9.7
Wexford	234	118	116	6.9
Wicklow	222	107	115	6.9
MUNSTER	2,074	1,094	980	6.9
Clare	186	99	87	6.6
Cork City	225	107	118	7.4
Cork County	643	323	320	6.9
Kerry	285	178	107	8.0
Limerick City	110	66	44	8.2
Limerick County	188	106	82	5.6
North Tipperary	124	57	67	7.3
South Tipperary	142	73	69	6.7
Waterford City	63	34	29	5.4
Waterford County	108	51	57	6.8
CONNACHT	879	486	393	6.8
Galway City	62	34	28	3.3
Galway County	297	171	126	7.3
Leitrim	59	29	30	8.0
Mayo	229	125	104	7.2
Roscommon	125	71	54	8.3
Sligo	107	56	51	6.9
ULSTER (PART OF)	473	246	227	6.9
Cavan	129	69	60	7.9
Donegal	244	121	123	6.5
Monaghan	100	56	44	7.0
REGIONAL AUTHORITIES:				
Border	810	412	398	6.7
Midland	464	245	219	7.1
West	713	401	312	6.8
Dublin	1,664	817	847	5.5
Mid-East	607	320	287	4.9
Mid-West	608	328	280	6.7
South-East	764	397	367	6.4
South-West	1,153	608	545	7.3

(a) Deaths per year per 1,000 population. Annual rates based on estimated 2007 population.

Table 10 Deaths registered by cause of death and county of residence of deceased

Area of residence	Total deaths	Malignant Neoplasms	Diseases of the Circulatory system	Diseases of the Respiratory system	External causes	All other causes
STATE	6,783	1,937	2,302	773	535	1,236
LEINSTER	3,357	998	1,069	382	283	625
Carlow	77	21	25	8	11	12
Dublin City	1,000	284	324	111	84	197
South Dublin	194	71	51	24	13	35
Fingal	184	75	45	19	15	30
Dun Laoghaire Rathdown	286	95	88	38	14	51
Kildare	185	51	40	18	26	50
Kilkenny	140	47	45	14	7	27
Laois	94	28	33	9	5	19
Longford	72	15	22	13	6	16
Louth	171	46	52	19	23	31
Meath	200	57	78	18	21	26
Offaly	102	32	35	8	12	15
Westmeath	196	48	72	29	19	28
Wexford	234	61	85	30	15	43
Wicklow	222	67	74	24	12	45
MUNSTER	2,074	570	762	235	145	362
Clare	186	43	60	26	19	38
Cork City	225	61	83	25	25	31
Cork County	643	176	231	69	33	134
Kerry	285	72	115	33	20	45
Limerick City	110	24	42	11	10	23
Limerick County	188	59	72	24	11	22
North Tipperary	124	39	53	12	3	17
South Tipperary	142	42	51	15	7	27
Waterford City	63	21	21	6	5	10
Waterford County	108	33	34	14	12	15
CONNACHT	879	227	316	99	74	163
Galway City	62	16	13	6	11	16
Galway County	297	86	98	32	32	49
Leitrim	59	8	29	8	3	11
Mayo	229	48	86	30	18	47
Roscommon	125	31	49	13	5	27
Sligo	107	38	41	10	5	13
ULSTER (PART OF)	473	142	155	57	33	86
Cavan	129	29	38	22	16	24
Donegal	244	79	83	27	11	44
Monaghan	100	34	34	8	6	18
REGIONAL AUTHORITIES:						
Border	810	234	277	94	64	141
Midland	464	123	162	59	42	78
West	713	181	246	81	66	139
Dublin	1,664	525	508	192	126	313
Mid-East	607	175	192	60	59	121
Mid-West	608	165	227	73	43	100
South-East	764	225	261	87	57	134
South-West	1,153	309	429	127	78	210

Table 11 Deaths registered classified by cause and age group

Cause of Death	65 COD Code	ICD-10 Code	Total Deaths	Age Group										
				Under 1	1-4	5-14	15-24	25-34	35-44	45-54	55-64	65-74	75-84	85 and over
Total deaths	0	A00-Y89	6,783	65	14	18	117	149	195	353	744	1,170	2,119	1,839
Infectious and parasitic diseases:-	1	A00-B99	46	1	-	-	1	1	1	2	4	7	21	8
Tuberculosis	2	A15-A19,B90	15	-	-	-	-	1	-	1	1	4	7	1
Meningococcal infection	3	A39	-	-	-	-	-	-	-	-	-	-	-	-
AIDS (HIV Disease)	4	B20-B24	2	-	-	-	-	-	-	1	1	-	-	-
Viral Hepatitis	5	B15-B19	1	-	-	-	-	-	1	-	-	-	-	-
Other infectious and parasitic diseases			28	1	-	-	1	-	-	-	2	3	14	7
Neoplasms	6	C00-D48	1,986	-	2	3	8	15	47	135	336	524	661	255
Malignant Neoplasms of the:-	7	C00-C97	1,937	-	2	3	8	15	47	135	333	514	641	239
Lip, oral cavity, pharynx	8	C00-C14	27	-	-	-	-	-	1	4	7	8	3	4
Oesophagus	9	C15	85	-	-	-	-	-	2	8	13	24	31	7
Stomach	10	C16	85	-	-	-	-	1	1	4	12	28	26	13
Colon	11	C18	118	-	-	-	-	-	-	5	14	26	54	19
Rectum and anus	12	C19-C21	93	-	-	-	-	1	6	7	9	25	33	12
Liver and the intrahepatic bile ducts	13	C22	60	-	-	-	1	-	-	4	11	18	15	11
Pancreas	14	C25	116	-	-	-	-	1	3	10	22	26	37	17
Larynx and trachea/bronchus /lung	15	C32-C34	449	-	-	-	-	-	4	25	96	135	156	33
Skin	16	C43	32	-	-	-	-	3	2	4	3	11	9	-
Breast	17	C50	141	-	-	-	-	2	7	20	35	36	31	10
Cervix uteri	18	C53	19	-	-	-	-	1	4	3	2	4	3	2
Other parts of uterus	19	C54-C55	16	-	-	-	-	-	-	1	2	7	5	1
Ovary	20	C56	68	-	-	-	-	1	-	8	14	26	15	4
Prostate	21	C61	123	-	-	-	-	-	-	2	10	23	63	25
Kidney	22	C64	35	-	-	-	-	-	1	3	4	12	13	2
Bladder	23	C67	51	-	-	-	-	-	1	2	5	11	20	12
Lymph/haematopoietic tissue	24	C81-C96	149	-	-	1	3	1	4	6	27	35	48	24
Other malignant neoplasms			270	-	2	2	4	4	11	19	47	59	79	43
Diseases of the blood and blood-forming organs, immunological disorders	25	D50-D89	24	-	1	-	-	-	-	1	4	3	5	10
Endocrine, Nutritional and metabolic diseases	26	E00-E90	179	1	2	2	3	2	6	3	15	29	70	46
Diabetes mellitus	27	E10-E14	126	-	-	-	-	1	4	3	10	21	54	33
Mental and behavioural disorders	28	F00-F99	171	-	-	-	5	3	13	12	12	16	53	57
Alcohol abuse (including alcoholic psychosis)	29	F10	37	-	-	-	-	1	12	9	8	5	2	-
Drug dependence, toxicomania	30	F11-F16,F18-F19	11	-	-	-	4	2	1	2	1	1	-	-
Diseases of the nervous system and the sense organs	31	G00-H95	186	3	1	2	3	-	4	8	18	21	71	55
Meningitis	32	G00-G03	1	-	-	-	-	-	-	-	-	-	1	-
Diseases of the Circulatory System:-	33	I00-I99	2,302	3	-	-	6	12	25	75	205	359	764	853
Ischaemic heart disease	34	I20-I25	1,253	-	-	-	1	3	15	49	136	222	411	416
of which: (Acute myocardial infarction)		I21	641	-	-	-	1	1	7	15	53	106	227	231
Other heart disease	35	I30-I33,I39-I52	295	3	-	-	3	5	3	5	29	34	80	133
Cerebrovascular disease	36	I60-I69	457	-	-	-	2	2	4	17	23	47	161	201
Other diseases of circulatory system			297	-	-	-	-	2	3	4	17	56	112	103

Diseases of the Respiratory system	37	J00-J99	773	-	1	-	1	1	7	7	43	92	287	334
Influenza	38	J10-J11	-	-	-	-	-	-	-	-	-	-	-	-
Pneumonia	39	J12-J19	267	-	-	-	-	-	3	3	7	19	83	152
Chronic Lower respiratory disease	40	J40-J47	344	-	-	-	1	-	2	1	25	50	143	122
<i>of which: Asthma</i>	41	J45-J46	12	-	-	-	1	-	-	-	-	2	5	4
Other diseases of the respiratory system			162	-	1	-	-	1	2	3	11	23	61	60
Diseases of the Digestive system	42	K00-K93	260	1	-	-	-	5	6	33	27	50	67	71
Ulcer of stomach, duodenum and jejunum	43	K25-K28	26	-	-	-	-	2	-	1	1	6	9	7
Chronic liver disease	44	K70,K73-K74	67	-	-	-	-	2	5	23	16	15	5	1
Other diseases of the digestive system			167	1	-	-	-	1	1	9	10	29	53	63
Diseases of the skin and subcutaneous tissue	45	L00-L99	13	-	-	-	-	-	-	1	1	2	5	4
Diseases of the musculoskeletal system/connective tissue	46	M00-M99	50	-	-	-	-	1	1	2	5	8	11	22
Rheumatoid arthritis and osteoarthritis	47	M05-M06,M15-M19	17	-	-	-	-	-	1	1	1	1	3	10
Diseases of the genitourinary system	48	N00-N99	163	-	-	-	-	-	1	-	8	16	53	85
Diseases of the kidney and ureter	49	N00-N29	108	-	-	-	-	-	1	-	6	12	33	56
Complications of pregnancy, childbirth and puerperium	50	O00-O99	-	-	-	-	-	-	-	-	-	-	-	-
Certain conditions originating in the perinatal period¹	51	P00-P96	22	22	-	-	-	-	-	-	-	-	-	-
Congenital malformations and chromosomal abnormalities	52	Q00-Q99	41	26	2	1	3	3	1	1	2	1	1	-
Congenital malformations of the:-														
Nervous system	53	Q00-Q07	5	3	-	-	2	-	-	-	-	-	-	-
Circulatory system	54	Q20-Q28	15	9	1	-	1	2	1	-	1	-	-	-
Symptoms, signs, abnormal findings, ill-defined causes	55	R00-R99	32	8	-	-	2	3	1	7	2	2	-	7
Sudden infant death syndrome	56	R95	7	7	-	-	-	-	-	-	-	-	-	-
Unknown and unspecified causes	57	R96-R99	13	1	-	-	2	2	-	5	2	1	-	-
External causes of injury and poisoning	58	V01-Y89	535	-	5	10	85	103	82	66	62	40	50	32
Accidents	59	V01-X59	300	-	4	6	50	51	44	27	30	26	33	29
<i>of which: Transport accidents</i>	60	V01-V99	97	-	2	3	27	18	10	7	6	9	12	3
<i>Accidental falls</i>	61	W00-W19	62	-	2	-	-	2	10	4	11	8	10	15
<i>Accidental poisoning</i>	62	X40-X49	73	-	-	-	15	21	18	7	5	4	3	-
<i>other accidents</i>			68	-	-	3	8	10	6	9	8	5	8	11
Suicide and intentional self harm	63	X60-X84	153	-	-	3	25	33	29	28	21	10	4	-
Homicide/assault	64	X85-Y09	12	-	-	-	3	8	1	-	-	-	-	-
Events of undetermined intent	65	Y10-Y34	55	-	1	1	7	11	8	10	10	2	4	1
All other external causes			15	-	-	-	-	-	-	1	1	2	9	2

¹ Stillbirths not included.

Table 12 Male deaths registered classified by cause and age group

Cause of Death	65 COD Code	ICD-10 Code	Total Males	Age Group										
				Under 1	1-4	5-14	15-24	25-34	35-44	45-54	55-64	65-74	75-84	85 and over
Total Male Deaths	0	A00-Y89	3,528	36	6	11	91	115	133	213	487	709	1,079	648
Infectious and parasitic diseases:-	1	A00-B99	23	1	-	-	-	-	1	1	3	2	12	3
Tuberculosis	2	A15-A19,B90	9	-	-	-	-	-	-	1	1	2	5	-
Meningococcal infection	3	A39	-	-	-	-	-	-	-	-	-	-	-	-
AIDS (HIV Disease)	4	B20-B24	-	-	-	-	-	-	-	-	-	-	-	-
Viral Hepatitis	5	B15-B19	1	-	-	-	-	-	1	-	-	-	-	-
Other infectious and parasitic diseases			13	1	-	-	-	-	-	-	2	-	7	3
Neoplasms	6	C00-D48	1,104	-	-	-	4	8	22	60	203	309	377	121
Malignant Neoplasms of the:-	7	C00-C97	1,075	-	-	-	4	8	22	60	202	300	365	114
Lip, oral cavity, pharynx	8	C00-C14	21	-	-	-	-	-	-	3	6	7	2	3
Oesophagus	9	C15	56	-	-	-	-	-	2	7	10	19	16	2
Stomach	10	C16	51	-	-	-	-	-	1	4	7	21	13	5
Colon	11	C18	69	-	-	-	-	-	-	3	10	17	33	6
Rectum and anus	12	C19-C21	56	-	-	-	-	-	4	2	5	18	20	7
Liver and the intrahepatic bile ducts	13	C22	28	-	-	-	-	-	-	4	6	12	5	1
Pancreas	14	C25	65	-	-	-	-	1	3	5	14	14	19	9
Larynx and trachea/bronchus /lung	15	C32-C34	295	-	-	-	-	-	2	14	70	90	98	21
Skin	16	C43	16	-	-	-	-	2	1	-	1	7	5	-
Breast	17	C50	-	-	-	-	-	-	-	-	-	-	-	-
Cervix uteri	18	C53	-	-	-	-	-	-	-	-	-	-	-	-
Other parts of uterus	19	C54-C55	-	-	-	-	-	-	-	-	-	-	-	-
Ovary	20	C56	-	-	-	-	-	-	-	-	-	-	-	-
Prostate	21	C61	123	-	-	-	-	-	-	2	10	23	63	25
Kidney	22	C64	22	-	-	-	-	-	1	2	3	8	7	1
Bladder	23	C67	30	-	-	-	-	-	-	1	5	4	11	9
Lymph/haematopoietic tissue	24	C81-C96	83	-	-	-	1	1	3	4	19	19	26	10
Other malignant neoplasms			160	-	-	-	3	4	5	9	36	41	47	15
Diseases of the blood and blood-forming organs, immunological disorders	25	D50-D89	7	-	-	-	-	-	-	-	2	1	2	2
Endocrine, Nutritional and metabolic diseases	26	E00-E90	94	1	1	1	2	2	4	1	11	15	40	16
Diabetes mellitus	27	E10-E14	72	-	-	-	-	1	3	1	7	11	36	13
Mental and behavioural disorders	28	F00-F99	85	-	-	-	4	2	8	7	7	14	28	15
Alcohol abuse (including alcoholic psychosis)	29	F10	25	-	-	-	-	1	8	5	6	3	2	-
Drug dependence, toxicomania	30	F11-F16,F18-F19	7	-	-	-	4	1	-	1	-	1	-	-
Diseases of the nervous system and the sense organs	31	G00-H95	81	2	1	1	1	-	3	5	9	10	32	17
Meningitis	32	G00-G03	-	-	-	-	-	-	-	-	-	-	-	-
Diseases of the Circulatory System:-	33	I00-I99	1,137	1	-	-	4	11	16	59	151	243	359	293
Ischaemic heart disease	34	I20-I25	693	-	-	-	1	2	9	44	106	156	208	167
of which: (Acute myocardial infarction)		I21	334	-	-	-	1	1	4	14	40	78	110	86
Other heart disease	35	I30-I33,I39-I52	132	1	-	-	2	5	2	3	20	21	38	40
Cerebrovascular disease	36	I60-I69	181	-	-	-	1	2	4	8	15	28	67	56
Other diseases of circulatory system			131	-	-	-	-	2	1	4	10	38	46	30

Diseases of the Respiratory system	37	J00-J99	349	-	1	-	1	1	5	4	28	49	149	111
Influenza	38	J10-J11	-	-	-	-	-	-	-	-	-	-	-	-
Pneumonia	39	J12-J19	95	-	-	-	-	-	3	2	4	9	36	41
Chronic Lower respiratory disease	40	J40-J47	171	-	-	-	1	-	-	-	16	26	81	47
of which: <i>Asthma</i>	41	J45-J46	4	-	-	-	1	-	-	-	-	-	2	1
Other diseases of the respiratory system			83	-	1	-	-	1	2	2	8	14	32	23
Diseases of the Digestive system	42	K00-K93	131	1	-	-	-	4	5	24	17	29	23	28
Ulcer of stomach, duodenum and jejunum	43	K25-K28	14	-	-	-	-	1	-	1	1	4	3	4
Chronic liver disease	44	K70,K73-K74	44	-	-	-	-	2	4	16	11	9	2	-
Other diseases of the digestive system			73	1	-	-	-	1	1	7	5	16	18	24
Diseases of the skin and subcutaneous tissue	45	L00-L99	5	-	-	-	-	-	-	1	1	-	3	-
Diseases of the musculoskeletal system/connective tissue	46	M00-M99	15	-	-	-	-	1	-	1	4	3	4	2
Rheumatoid arthritis and osteoarthritis	47	M05-M06,M15-M19	3	-	-	-	-	-	-	-	-	1	1	1
Diseases of the genitourinary system	48	N00-N99	55	-	-	-	-	-	1	-	4	9	19	22
Diseases of the kidney and ureter	49	N00-N29	45	-	-	-	-	-	1	-	3	8	15	18
Complications of pregnancy, childbirth and puerperium	50	O00-O99	-	-	-	-	-	-	-	-	-	-	-	-
Certain conditions originating in the perinatal period¹	51	P00-P96	14	14	-	-	-	-	-	-	-	-	-	-
Congenital malformations and chromosomal abnormalities	52	Q00-Q99	23	13	1	1	2	2	1	-	2	-	1	-
Congenital malformations of the:-														
Nervous system	53	Q00-Q07	5	3	-	-	2	-	-	-	-	-	-	-
Circulatory system	54	Q20-Q28	10	6	1	-	-	1	1	-	1	-	-	-
Symptoms, signs, abnormal findings, ill-defined causes	55	R00-R99	15	3	-	-	2	1	1	3	1	1	-	3
Sudden infant death syndrome	56	R95	2	2	-	-	-	-	-	-	-	-	-	-
Unknown and unspecified causes	57	R96-R99	8	1	-	-	2	1	-	2	1	1	-	-
External causes of injury and poisoning	58	V01-Y89	390	-	2	8	71	83	66	47	44	24	30	15
Accidents	59	V01-X59	218	-	2	6	42	38	36	19	24	14	23	14
of which: <i>Transport accidents</i>	60	V01-V99	78	-	1	3	20	17	10	6	5	5	8	3
Accidental falls	61	W00-W19	33	-	1	-	-	-	8	1	7	3	7	6
Accidental poisoning	62	X40-X49	54	-	-	-	15	13	14	3	4	4	1	-
other accidents			53	-	-	3	7	8	4	9	8	2	7	5
Suicide and intentional self harm	63	X60-X84	118	-	-	2	20	30	23	21	12	7	3	-
Homicide/assault	64	X85-Y09	11	-	-	-	3	7	1	-	-	-	-	-
Events of undetermined intent	65	Y10-Y34	36	-	-	-	6	8	6	6	7	2	1	-
All other external causes			7	-	-	-	-	-	-	1	1	1	3	1

¹ Stillbirths not included.

Table 13 Female deaths registered classified by cause and age group

Cause of Death	65 COD Code	ICD-10 Code	Total Females	Age Group										
				Under 1	1-4	5-14	15-24	25-34	35-44	45-54	55-64	65-74	75-84	85 and over
Total Female Deaths	0	A00-Y89	3,255	29	8	7	26	34	62	140	257	461	1,040	1,191
Infectious and parasitic diseases:-	1	A00-B99	23	-	-	-	1	1	-	1	1	5	9	5
Tuberculosis	2	A15-A19,B90	6	-	-	-	-	1	-	-	-	2	2	1
Meningococcal infection	3	A39	-	-	-	-	-	-	-	-	-	-	-	-
AIDS (HIV Disease)	4	B20-B24	2	-	-	-	-	-	-	1	1	-	-	-
Viral Hepatitis	5	B15-B19	-	-	-	-	-	-	-	-	-	-	-	-
Other infectious and parasitic diseases			15	-	-	-	1	-	-	-	-	3	7	4
Neoplasms	6	C00-D48	882	-	2	3	4	7	25	75	133	215	284	134
Malignant Neoplasms of the:-	7	C00-C97	862	-	2	3	4	7	25	75	131	214	276	125
Lip, oral cavity, pharynx	8	C00-C14	6	-	-	-	-	-	1	1	1	1	1	1
Oesophagus	9	C15	29	-	-	-	-	-	-	1	3	5	15	5
Stomach	10	C16	34	-	-	-	-	1	-	-	5	7	13	8
Colon	11	C18	49	-	-	-	-	-	-	2	4	9	21	13
Rectum and anus	12	C19-C21	37	-	-	-	-	1	2	5	4	7	13	5
Liver and the intrahepatic bile ducts	13	C22	32	-	-	-	1	-	-	-	5	6	10	10
Pancreas	14	C25	51	-	-	-	-	-	-	5	8	12	18	8
Larynx and trachea/bronchus /lung	15	C32-C34	154	-	-	-	-	-	2	11	26	45	58	12
Skin	16	C43	16	-	-	-	-	1	1	4	2	4	4	-
Breast	17	C50	141	-	-	-	-	2	7	20	35	36	31	10
Cervix uteri	18	C53	19	-	-	-	-	1	4	3	2	4	3	2
Other parts of uterus	19	C54-C55	16	-	-	-	-	-	-	1	2	7	5	1
Ovary	20	C56	68	-	-	-	-	1	-	8	14	26	15	4
Prostate	21	C61	-	-	-	-	-	-	-	-	-	-	-	-
Kidney	22	C64	13	-	-	-	-	-	-	1	1	4	6	1
Bladder	23	C67	21	-	-	-	-	-	1	1	-	7	9	3
Lymph/haematopoietic tissue	24	C81-C96	66	-	-	1	2	-	1	2	8	16	22	14
Other malignant neoplasms			110	-	2	2	1	-	6	10	11	18	32	28
Diseases of the blood and blood-forming organs, immunological disorders	25	D50-D89	17	-	1	-	-	-	-	1	2	2	3	8
Endocrine, Nutritional and metabolic diseases	26	E00-E90	85	-	1	1	1	-	2	2	4	14	30	30
Diabetes mellitus	27	E10-E14	54	-	-	-	-	-	1	2	3	10	18	20
Mental and behavioural disorders	28	F00-F99	86	-	-	-	1	1	5	5	5	2	25	42
Alcohol abuse (including alcoholic psychosis)	29	F10	12	-	-	-	-	-	4	4	2	2	-	-
Drug dependence, toxicomania	30	F11-F16,F18-F19	4	-	-	-	-	1	1	1	1	-	-	-
Diseases of the nervous system and the sense organs	31	G00-H95	105	1	-	1	2	-	1	3	9	11	39	38
Meningitis	32	G00-G03	1	-	-	-	-	-	-	-	-	-	1	-
Diseases of the Circulatory System:-	33	I00-I99	1,165	2	-	-	2	1	9	16	54	116	405	560
Ischaemic heart disease	34	I20-I25	560	-	-	-	-	1	6	5	30	66	203	249
of which: (Acute myocardial infarction)		I21	307	-	-	-	-	-	3	1	13	28	117	145
Other heart disease	35	I30-I33,I39-I52	163	2	-	-	1	-	1	2	9	13	42	93
Cerebrovascular disease	36	I60-I69	276	-	-	-	1	-	-	9	8	19	94	145
Other diseases of circulatory system			166	-	-	-	-	-	2	-	7	18	66	73

Diseases of the Respiratory system	37	J00-J99	424	-	-	-	-	-	2	3	15	43	138	223
Influenza	38	J10-J11	-	-	-	-	-	-	-	-	-	-	-	-
Pneumonia	39	J12-J19	172	-	-	-	-	-	-	1	3	10	47	111
Chronic Lower respiratory disease	40	J40-J47	173	-	-	-	-	-	2	1	9	24	62	75
<i>of which: Asthma</i>	41	<i>J45-J46</i>	8	-	-	-	-	-	-	-	-	2	3	3
Other diseases of the respiratory system			79	-	-	-	-	-	-	1	3	9	29	37
Diseases of the Digestive system	42	K00-K93	129	-	-	-	-	1	1	9	10	21	44	43
Ulcer of stomach, duodenum and jejunum	43	K25-K28	12	-	-	-	-	1	-	-	-	2	6	3
Chronic liver disease	44	K70,K73-K74	23	-	-	-	-	-	1	7	5	6	3	1
Other diseases of the digestive system			94	-	-	-	-	-	-	2	5	13	35	39
Diseases of the skin and subcutaneous tissue	45	L00-L99	8	-	-	-	-	-	-	-	-	2	2	4
Diseases of the musculoskeletal system/connective tissue	46	M00-M99	35	-	-	-	-	-	1	1	1	5	7	20
Rheumatoid arthritis and osteoarthritis	47	M05-M06,M15-M19	14	-	-	-	-	-	1	1	1	-	2	9
Diseases of the genitourinary system	48	N00-N99	108	-	-	-	-	-	-	-	4	7	34	63
Diseases of the kidney and ureter	49	N00-N29	63	-	-	-	-	-	-	-	3	4	18	38
Complications of pregnancy, childbirth and puerperium	50	O00-O99	-	-	-	-	-	-	-	-	-	-	-	-
Certain conditions originating in the perinatal period¹	51	P00-P96	8	8	-	-	-	-	-	-	-	-	-	-
Congenital malformations and chromosomal abnormalities	52	Q00-Q99	18	13	1	-	1	1	-	1	-	1	-	-
Congenital malformations of the:-														
Nervous system	53	Q00-Q07	-	-	-	-	-	-	-	-	-	-	-	-
Circulatory system	54	Q20-Q28	5	3	-	-	1	1	-	-	-	-	-	-
Symptoms, signs, abnormal findings, ill-defined causes	55	R00-R99	17	5	-	-	-	2	-	4	1	1	-	4
Sudden infant death syndrome	56	R95	5	5	-	-	-	-	-	-	-	-	-	-
Unknown and unspecified causes	57	R96-R99	5	-	-	-	-	1	-	3	1	-	-	-
External causes of injury and poisoning	58	V01-Y89	145	-	3	2	14	20	16	19	18	16	20	17
Accidents	59	V01-X59	82	-	2	-	8	13	8	8	6	12	10	15
<i>of which: Transport accidents</i>	60	<i>V01-V99</i>	19	-	1	-	7	1	-	1	1	4	4	-
<i>Accidental falls</i>	61	<i>W00-W19</i>	29	-	1	-	-	2	2	3	4	5	3	9
<i>Accidental poisoning</i>	62	<i>X40-X49</i>	19	-	-	-	-	8	4	4	1	-	2	-
<i>other accidents</i>			15	-	-	-	1	2	2	-	-	3	1	6
Suicide and intentional self harm	63	X60-X84	35	-	-	1	5	3	6	7	9	3	1	-
Homicide/assault	64	X85-Y09	1	-	-	-	-	1	-	-	-	-	-	-
Events of undetermined intent	65	Y10-Y34	19	-	1	1	1	3	2	4	3	-	3	1
All other external causes			8	-	-	-	-	-	-	-	-	1	6	1

¹ Stillbirths not included.

Table 14 Infant and neonatal mortality by area of residence of deceased

Area of residence	Infant mortality		Neonatal mortality	
	Number	Rate	Number	Rate
STATE	65	3.7	46	2.6
LEINSTER	29	2.9	21	2.1
Carlow	1	4.3	0	0.0
Dublin City	5	2.7	4	2.2
South Dublin	3	2.7	3	2.7
Fingal	2	1.6	2	1.6
Dun Laoghaire Rathdown	1	1.6	0	0.0
Kildare	3	3.0	2	2.0
Kilkenny	1	3.5	1	3.5
Laois	0	0.0	0	0.0
Longford	0	0.0	0	0.0
Louth	1	1.9	0	0.0
Meath	3	3.5	2	2.3
Offaly	1	3.5	1	3.5
Westmeath	1	2.7	0	0.0
Wexford	6	10.4	5	8.7
Wicklow	1	1.7	1	1.7
MUNSTER	25	5.4	17	3.7
Clare	5	11.8	4	9.5
Cork City	4	11.8	2	5.9
Cork County	5	3.2	3	1.9
Kerry	5	9.7	3	5.8
Limerick City	1	4.8	1	4.8
Limerick County	2	3.9	2	3.9
North Tipperary	1	3.3	1	3.3
South Tipperary	1	3.5	1	3.5
Waterford City	0	0.0	0	0.0
Waterford County	1	4.0	0	0.0
CONNACHT	9	4.7	7	3.6
Galway City	0	0.0	0	0.0
Galway County	3	4.2	2	2.8
Leitrim	1	9.3	1	9.3
Mayo	3	6.6	3	6.6
Roscommon	1	4.7	1	4.7
Sligo	1	5.0	0	0.0
ULSTER (PART OF)	2	2.1	1	1.1
Cavan	0	0.0	0	0.0
Donegal	2	3.8	1	1.9
Monaghan	0	0.0	0	0.0
REGIONAL AUTHORITIES:				
Border	5	2.8	2	1.1
Midland	2	1.8	1	0.9
West	7	4.3	6	3.7
Dublin	11	2.3	9	1.9
Mid-East	7	2.9	5	2.1
Mid-West	9	6.2	8	5.5
South-East	10	5.5	7	3.8
South-West	14	5.8	8	3.3

Infant mortality rates: Deaths of infants under one year per 1,000 live births, classified by area of residence of mother.

Neonatal mortality rates: Deaths of infants under 28 days per 1,000 live births, classified by area of residence of mother.

Infant and neonatal mortality rates in some areas, based on small numbers are subject to considerable fluctuation and caution should be exercised in their interpretation.

Yearly Summary 2007

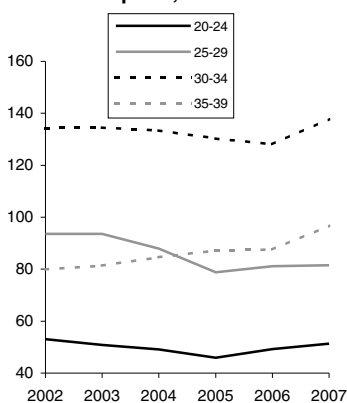
Yearly Summary 2007

Commentary

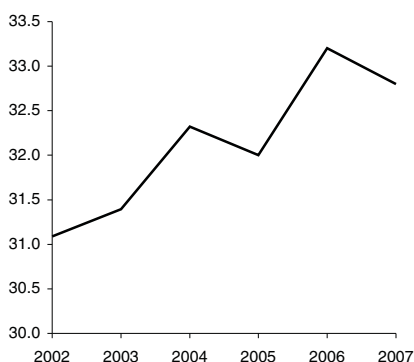
Average age at maternity in years

	Total births	First births
All births	31.1	28.8
Inside marriage	33.0	31.4
Outside marriage	27.4	25.6

Age specific fertility rates - live births per 1,000 females



Percentage of births outside marriage



Introduction

This report has been prepared by the Central Statistics Office for the Minister for Health and Children in accordance with the provisions of Section 2 of the Vital Statistics and Births, Deaths and Marriages Registration Act, 1952 and Section 73 of the Civil Registration Act 2004.

Births

There were 70,620 births registered in 2007, 36,010 males and 34,610 females, an increase of 6,383 on 2006. The 2007 total is 35% higher than in 1998 when 52,311 babies were registered.

This represents an annual birth rate of 16.3 per 1,000 of the population, 1.1 above 2006. This rate is 1.8 per 1,000 population higher than in 1998.

Fertility

The total period fertility rate, TPFR is derived from the age specific fertility rates in the current year. It represents the projected number of children a woman would have if she experienced current age specific fertility rates while progressing from age 15-49 years. A value of 2.1 is generally considered to be the level at which the population would replace itself in the long run, ignoring migration.

In 2007 the TPFR for Ireland was 2.03 and is just below replacement level.

Birth order

A total of 29,269 births (41.9%) were to first time mothers in 2007. Second time mothers had 22,215 births (31.8%) (see Table 3). This compares to 20,995 (39.4%) first births registered in 1998.

Births outside marriage

There were 23,170 births registered as outside marriage in 2007. This accounted for 32.8% of all births, a decrease of 0.4% on 2006. The highest percentage of births outside marriage occurred in Limerick City at 55%, while the lowest percentage was in Galway County at 21% (see Table 5). In 1998, 15,133 births were registered outside marriage or 28.3% of all births.

A total of 2,464 teenagers had babies last year, 65 of these were aged under 16. More than 31% of of births outside marriage were to women aged 30 years and over.

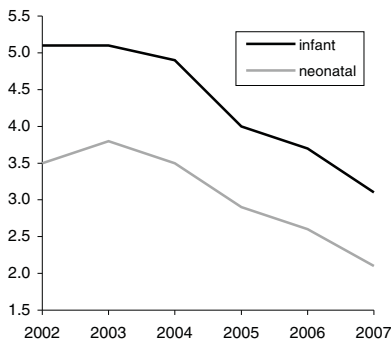
Deaths

There were 28,050 deaths registered in 2007, 14,299 males and 13,751 females. This represents an annual death rate of 6.5 per 1,000 population.

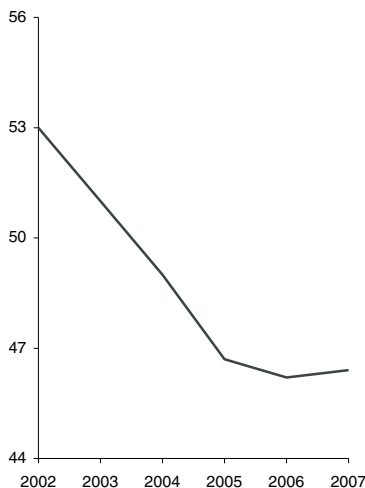
Age at death

There were 221 infant deaths registered in 2007 giving an infant mortality rate of 3.1 deaths per 1,000 live births. Neonatal deaths are deaths of infants at ages under 4 weeks. There were 149 neonatal deaths registered in 2007, a neonatal mortality rate of 2.1 deaths per 1,000 live births.

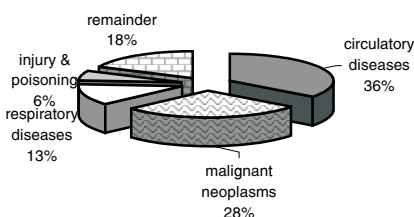
Infant and neonatal mortality rates per 1,000 live births



Death rates for ages 65 & over per 1,000 relevant population



Principal causes of death 2007



There were 21,824 deaths of persons aged 65 and over registered in 2007. This represents an annual death rate of 46.4 per 1,000 population aged 65 and over.

Cause of death

- **Diseases of the Circulatory System:**

Diseases of the Circulatory System accounted for 9,931 deaths, or an annual rate of 2.3 per 1,000 population. Of these, 5,368 were due to Ischaemic Heart Disease and 2,034 to Cerebrovascular Disease.

- **Malignant Neoplasms:**

There were 7,844 deaths from malignant neoplasms. This is equivalent to an annual rate of 1.8 per 1,000 population.

- **Diseases of the Respiratory System:**

Deaths from pneumonia numbered 1,332; chronic lower respiratory disease accounted for 1,490 deaths and 719 deaths resulted from other respiratory diseases.

Late Registered Deaths

Deaths which have not been registered within one year of occurrence can be registered only on the authority of the Registrar General. The number of such deaths registered in 2007 was 731. Table 2 in the appendix of the report contains an analysis of these deaths.

Marriages

The number of marriages registered during 2007 was 22,544 equivalent to an annual marriage rate of 5.2 per 1,000 population, the same as 2006. The 2007 total is 34% higher than in 1998 when 16,783 marriages were registered.

Divorces

The number of divorces granted in 2007 by the Circuit Court and the High Court was 3,684 an increase of 218 on the 2006 figure. (see table 14).

Population

The estimated population in April 2007 was 4,339,000.

Methodology

All figures in this report are classified by year of registration.

Changes in Methodology (Deaths)

This publication continues with the 3 major changes in the methods by which mortality statistics are compiled. These changes were introduced in the Vital Statistics First Quarter 2007 publication.

- 1 Underlying Cause of Death is classified according to International Classification of Diseases, Version 10 (ICD10) instead of to International Classification of Diseases, Version 9 (ICD9).
- 2 Deaths where there was not an inquest have been coded using the automated coding system developed by the U.S National Centre for Health Statistics (NCHS). Previously the Underlying Cause of Death was chosen manually for all deaths.
- 3 All deaths registered in the year have been included in the statistics, in some cases with a provisional cause of death. Previously the practice

was not to include deaths in the annual summary statistics until the cause of death had been definitely established.

Because of these changes, caution should be taken in directly comparing these mortality statistics with those of previous years. Many countries have found that moving to ICD10 does affect certain specific categories of causes of death. In particular, a significant drop in the number of deaths attributed to pneumonia and bronchopneumonia has been observed in some countries after moving to ICD10. These deaths were instead assigned to other conditions included on the death certificate.

The effect of the third change above has been to increase the number of deaths in our statistics as compared with previous years. Statistics for deaths due to external causes are particularly affected by this change.

To aid comparability, we are currently completing a Bridge Coding study based on deaths registered in 2005. In this study, deaths that were previously coded in ICD9 using manual coding are being recoded independently in ICD10 using the automated system. The resulting differences in the number of deaths assigned to specific causes using the respective methods will give us a good insight into the effect of these changes on future mortality statistics. This study will be published in 2008.

Table 1 Births registered, classified by age of mother at maternity between 2005 and 2007 and their corresponding annual age specific (asfr) and total period fertility rates (tpfr)

Period	Under 20	20-24	25-29	30-34	35-39	40-44	45&over	Age not stated	All ages
Number of live births									
Quarter 1									
2005	639	2076	3421	5226	3264	634	13	61	15334
2006	649	2186	3660	5444	3331	646	22	20	15958
2007	594	2291	3942	5946	3935	727	33	5	17473
Quarter 2									
2005	598	1886	3336	5386	3414	643	25	18	15306
2006	555	1997	3620	5580	3531	671	21	4	15979
2007	640	2039	3975	5909	3784	751	24	5	17127
Quarter 3									
2005	650	2069	3736	5664	3400	615	19	17	16170
2006	598	2188	3940	5776	3700	690	23	5	16920
2007	602	2311	4390	6446	4038	729	33	5	18554
Quarter 4									
2005	540	1754	3157	5059	3130	560	17	15	14232
2006	560	1974	3671	5202	3294	641	32	6	15380
2007	628	2222	4029	5850	3971	730	31	5	17466
Total									
2005	2427	7785	13650	21335	13208	2452	74	111	61042
2006	2362	8345	14891	22002	13856	2648	98	35	64237
2007	2464	8863	16336	24151	15728	2937	121	20	70620
Live births per 1,000 relevant female population (ASFR)									TPFR
Quarter 1									
2005	17.7	49.0	79.2	128.0	86.4	17.4	0.4		1.89
2006	18.3	51.6	47.6	126.8	84.3	17.3	0.6		1.73
2007	16.9	53.0	78.7	135.7	96.9	19.1	0.9		2.01
Quarter 2									
2005	16.6	44.4	77.0	131.5	90.1	17.6	0.8		1.89
2006	15.6	47.1	78.8	129.9	89.2	17.9	0.6		1.90
2007	18.2	47.2	79.4	134.9	93.2	19.7	0.7		1.97
Quarter 3									
2005	18.0	48.7	86.2	138.3	89.7	16.9	0.6		1.99
2006	16.9	51.6	85.8	134.4	93.5	18.4	0.7		2.01
2007	17.1	53.5	87.6	147.1	99.4	19.2	0.9		2.12
Quarter 4									
2005	15.0	41.3	72.9	123.5	82.6	15.3	0.5		1.76
2006	15.8	46.5	79.9	121.1	83.3	17.1	0.9		1.82
2007	17.9	51.4	80.4	133.5	97.8	19.2	0.9		2.01
Total									
2005	16.8	45.9	78.8	130.3	87.2	16.8	0.6		1.88
2006	16.6	49.2	81.1	128.1	87.6	17.7	0.7		1.90
2007	17.5	51.3	81.5	137.8	96.8	19.3	0.9		2.03

Table 2 Births registered, classified by area of residence of mother

	Total	Male	Female	Rate ^(a)
STATE	70,620	36,010	34,610	16.3
LEINSTER	40,000	20,467	19,533	17.0
Carlow	968	490	478	18.8
Dublin City	7,123	3,618	3,505	13.7
South Dublin	4,711	2,375	2,336	18.6
Fingal	5,284	2,741	2,543	21.5
Dun Laoghaire Rathdown	2,580	1,253	1,327	13.0
Kildare	3,837	1,965	1,872	20.1
Kilkenny	1,251	680	571	14.0
Laois	1,234	645	589	18.0
Longford	581	303	278	16.5
Louth	1,799	920	879	15.8
Meath	3,401	1,744	1,657	20.4
Offaly	1,193	616	577	16.4
Westmeath	1,384	703	681	17.0
Wexford	2,296	1,171	1,125	17.0
Wicklow	2,358	1,243	1,115	18.3
MUNSTER	18,861	9,548	9,313	15.7
Clare	1,782	901	881	15.7
Cork City	1,433	731	702	11.7
Cork County	6,478	3,258	3,220	17.5
Kerry	2,042	1,024	1,018	14.3
Limerick City	872	444	428	16.2
Limerick County	2,081	1,042	1,039	15.5
North Tipperary	1,220	616	604	18.1
South Tipperary	1,165	606	559	13.7
Waterford City	763	394	369	16.3
Waterford County	1,025	532	493	16.1
CONNACHT	7,816	3,992	3,824	15.1
Galway City	1,037	514	523	14.0
Galway County	2,796	1,420	1,376	17.2
Leitrim	476	258	218	16.1
Mayo	1,839	955	884	14.5
Roscommon	767	371	396	12.8
Sligo	901	474	427	14.5
ULSTER (PART OF)	3,943	2,003	1,940	14.4
Cavan	1,035	510	525	15.8
Donegal	2,114	1,079	1,035	14.0
Monaghan	794	414	380	13.9
REGIONAL AUTHORITIES:				
Border	7,119	3,655	3,464	14.8
Midland	4,392	2,267	2,125	16.9
West	6,439	3,260	3,179	15.4
Dublin	19,698	9,987	9,711	16.3
Mid-East	9,596	4,952	4,644	19.3
Mid-West	5,955	3,003	2,952	16.3
South-East	7,468	3,873	3,595	15.7
South-West	9,953	5,013	4,940	15.7

^(a) Births per year per 1,000 population. Annual rates based on estimated 2007 population.

Table 4 Number and percentage of births registered within and outside marriage, classified by age of mother

Age of mother at maternity	Total	Married parents	Unmarried Parents		% to married parents	% to unmarried parents	
			Total	Same address		Total	Same address
	Number				Percentage		
All ages	70,620	47,450	23,170	11,932	67	33	17
15 and under	65	1	64	8	2	98	12
16	148	3	145	14	2	98	9
17	391	15	376	53	4	96	14
18	704	60	644	113	9	91	16
19	1,156	134	1,022	214	12	88	19
Under 20	2,464	213	2,251	402	9	91	16
20	1,357	201	1,156	355	15	85	26
21	1,607	302	1,305	472	19	81	29
22	1,742	378	1,364	578	22	78	33
23	1,911	485	1,426	677	25	75	35
24	2,246	733	1,513	778	33	67	35
20-24	8,863	2,099	6,764	2,860	24	76	32
25	2,520	981	1,539	869	39	61	34
26	2,847	1,356	1,491	864	48	52	30
27	3,304	1,789	1,515	904	54	46	27
28	3,631	2,313	1,318	785	64	36	22
29	4,034	2,937	1,097	677	73	27	17
25-29	16,336	9,376	6,960	4,099	57	43	25
30	4,432	3,453	979	592	78	22	13
31	4,792	3,795	997	633	79	21	13
32	5,060	4,157	903	582	82	18	12
33	4,956	4,205	751	482	85	15	10
34	4,911	4,193	718	455	85	15	9
30-34	24,151	19,803	4,348	2,744	82	18	11
35	4,495	3,833	662	441	85	15	10
36	3,872	3,338	534	336	86	14	9
37	3,124	2,677	447	280	86	14	9
38	2,402	2,052	350	218	85	15	9
39	1,835	1,526	309	199	83	17	11
35-39	15,728	13,426	2,302	1,474	85	15	9
40	1,281	1,086	195	121	85	15	9
41	802	655	147	93	82	18	12
42	460	377	83	59	82	18	13
43	243	198	45	30	81	19	12
44	151	114	37	27	75	25	18
40-44	2,937	2,430	507	330	83	17	11
45 and over	121	92	29	18	76	24	15
Age not stated	20	11	9	5	55	45	25

Table 5 Number and percentage of births registered within and outside marriage, classified by area of residence of mother

Area of residence	Total	Married parents	Unmarried Parents		% to married parents	% to unmarried parents	
			Total	Same address		Total	Same address
	Number				Percentage		
STATE	70,620	47,450	23,170	11,932	67	33	17
LEINSTER	40,000	25,993	14,007	6,993	65	35	17
Carlow	968	629	339	190	65	35	20
Dublin City	7,123	3,862	3,261	1,248	54	46	18
South Dublin	4,711	2,806	1,905	796	60	40	17
Fingal	5,284	3,658	1,626	920	69	31	17
Dun Laoghaire Rathdown	2,580	1,922	658	320	74	26	12
Kildare	3,837	2,767	1,070	588	72	28	15
Kilkenny	1,251	910	341	194	73	27	16
Laois	1,234	829	405	261	67	33	21
Longford	581	416	165	85	72	28	15
Louth	1,799	1,072	727	372	60	40	21
Meath	3,401	2,418	983	638	71	29	19
Offaly	1,193	793	400	209	66	34	18
Westmeath	1,384	951	433	245	69	31	18
Wexford	2,296	1,374	922	504	60	40	22
Wicklow	2,358	1,586	772	423	67	33	18
MUNSTER	18,861	13,007	5,854	3,084	69	31	16
Clare	1,782	1,314	468	281	74	26	16
Cork City	1,433	721	712	240	50	50	17
Cork County	6,478	4,920	1,558	933	76	24	14
Kerry	2,042	1,479	563	318	72	28	16
Limerick City	872	394	478	157	45	55	18
Limerick County	2,081	1,499	582	348	72	28	17
North Tipperary	1,220	845	375	240	69	31	20
South Tipperary	1,165	724	441	210	62	38	18
Waterford City	763	403	360	181	53	47	24
Waterford County	1,025	708	317	176	69	31	17
CONNACHT	7,816	5,749	2,067	1,223	74	26	16
Galway City	1,037	689	348	172	66	34	17
Galway County	2,796	2,196	600	412	79	21	15
Leitrim	476	351	125	83	74	26	17
Mayo	1,839	1,342	497	263	73	27	14
Roscommon	767	567	200	127	74	26	17
Sligo	901	604	297	166	67	33	18
ULSTER (PART OF)	3,943	2,701	1,242	632	69	31	16
Cavan	1,035	721	314	190	70	30	18
Donegal	2,114	1,431	683	312	68	32	15
Monaghan	794	549	245	130	69	31	16
REGIONAL AUTHORITIES:							
Border	7,119	4,728	2,391	1,253	66	34	18
Midland	4,392	2,989	1,403	800	68	32	18
West	6,439	4,794	1,645	974	74	26	15
Dublin	19,698	12,248	7,450	3,284	62	38	17
Mid-East	9,596	6,771	2,825	1,649	71	29	17
Mid-West	5,955	4,052	1,903	1,026	68	32	17
South-East	7,468	4,748	2,720	1,455	64	36	19
South-West	9,953	7,120	2,833	1,491	72	28	15

Table 6 Births registered, classified by area of residence and age of mother

Area of residence	Total	Under 20	20-24	25-29	30-34	35-39	40 and over	Age not stated	Average age of mother at maternity	
									Total	First
STATE	70,620	2,464	8,863	16,336	24,151	15,728	3,058	20	31.1	28.8
LEINSTER	40,000	1,461	5,204	9,398	13,523	8,770	1,634	10	31.0	28.8
Carlow	968	44	133	270	310	180	31	-	30.3	28.2
Dublin City	7,123	344	1,203	1,688	2,035	1,556	295	2	30.4	28.5
South Dublin	4,711	218	735	1,203	1,505	881	168	1	30.3	27.9
Fingal	5,284	154	593	1,235	2,008	1,118	176	-	31.2	29.3
Dun Laoghaire Rathdown	2,580	50	181	353	935	844	216	1	33.3	31.2
Kildare	3,837	131	383	814	1,475	889	145	-	31.5	29.2
Kilkenny	1,251	35	120	263	490	275	68	-	31.7	29.4
Laois	1,234	40	195	329	406	230	33	1	30.4	28.0
Longford	581	20	84	149	176	124	28	-	30.8	28.0
Louth	1,799	94	269	490	543	346	57	-	30.2	27.5
Meath	3,401	78	330	821	1,278	772	120	2	31.4	29.4
Offaly	1,193	50	174	307	378	239	44	1	30.5	28.0
Westmeath	1,384	47	193	352	453	269	68	2	30.8	28.5
Wexford	2,296	94	335	599	715	454	99	-	30.5	27.9
Wicklow	2,358	62	276	525	816	593	86	-	31.4	29.3
MUNSTER	18,861	623	2,239	4,237	6,602	4,295	859	6	31.3	29.0
Clare	1,782	52	188	347	627	484	84	-	31.9	29.6
Cork City	1,433	79	279	397	367	249	62	-	29.6	27.2
Cork County	6,478	142	545	1,378	2,520	1,583	304	6	32.0	29.9
Kerry	2,042	55	241	431	712	478	125	-	31.6	29.2
Limerick City	872	80	182	230	217	141	22	-	28.8	26.0
Limerick County	2,081	46	250	459	764	472	90	-	31.5	29.5
North Tipperary	1,220	42	124	288	415	293	58	-	31.5	29.0
South Tipperary	1,165	51	171	271	391	236	45	-	30.6	28.2
Waterford City	763	53	152	210	199	126	23	-	29.2	26.3
Waterford County	1,025	23	107	226	390	233	46	-	31.6	29.4
CONNACHT	7,816	214	913	1,688	2,699	1,895	403	4	31.6	29.2
Galway City	1,037	46	174	254	307	215	40	1	30.3	28.4
Galway County	2,796	56	253	550	1,025	738	171	3	32.2	29.9
Leitrim	476	14	64	108	160	103	27	-	31.3	29.0
Mayo	1,839	55	221	401	632	442	88	-	31.5	29.1
Roscommon	767	16	78	186	250	202	35	-	31.7	29.1
Sligo	901	27	123	189	325	195	42	-	31.2	28.6
ULSTER (PART OF)	3,943	166	507	1,013	1,327	768	162	-	30.7	27.9
Cavan	1,035	44	143	254	331	218	45	-	30.8	27.8
Donegal	2,114	86	273	549	717	406	83	-	30.7	27.9
Monaghan	794	36	91	210	279	144	34	-	30.7	28.0
REGIONAL AUTHORITIES:										
Border	7,119	301	963	1,800	2,355	1,412	288	-	30.7	28.0
Midland	4,392	157	646	1,137	1,413	862	173	4	30.6	28.2
West	6,439	173	726	1,391	2,214	1,597	334	4	31.7	29.3
Dublin	19,698	766	2,712	4,479	6,483	4,399	855	4	31.0	28.9
Mid-East	9,596	271	989	2,160	3,569	2,254	351	2	31.4	29.3
Mid-West	5,955	220	744	1,324	2,023	1,390	254	-	31.2	28.8
South-East	7,468	300	1,018	1,839	2,495	1,504	312	-	30.7	28.3
South-West	9,953	276	1,065	2,206	3,599	2,310	491	6	31.6	29.3

Table 7 Births registered outside marriage, classified by area of residence and age of mother

Area of residence	Total	Under 25	25-29	30-34	35-39	40 and over	Age not stated	Average age of mother at maternity	
								Total	First
STATE	23,170	9,015	6,960	4,348	2,302	536	9	27.4	25.6
LEINSTER	14,007	5,331	4,224	2,706	1,420	322	4	27.5	25.7
Carlow	339	135	120	51	27	6	-	26.8	25.4
Dublin City	3,261	1,260	935	598	394	74	-	27.6	25.9
South Dublin	1,905	770	599	356	141	38	1	26.9	25.0
Fingal	1,626	553	507	358	169	39	-	27.9	26.3
Dun Laoghaire Rathdown	658	190	167	135	120	46	-	29.6	27.8
Kildare	1,070	414	308	224	105	19	-	27.3	25.6
Kilkenny	341	125	93	88	31	4	-	27.5	25.8
Laois	405	179	119	63	40	3	1	26.7	24.8
Longford	165	72	47	31	13	2	-	26.8	24.9
Louth	727	306	246	114	49	12	-	26.5	24.8
Meath	983	327	319	223	93	20	1	27.9	26.3
Offaly	400	181	118	71	26	4	-	26.4	24.9
Westmeath	433	182	122	84	34	10	1	27.1	24.7
Wexford	922	361	290	165	84	22	-	27.3	25.3
Wicklow	772	276	234	145	94	23	-	27.9	26.4
MUNSTER	5,854	2,327	1,761	1,084	556	124	2	27.2	25.4
Clare	468	186	125	91	51	15	-	27.6	25.7
Cork City	712	297	229	121	44	21	-	26.8	25.0
Cork County	1,558	554	485	320	158	39	2	27.7	26.1
Kerry	563	215	163	114	60	11	-	27.5	25.6
Limerick City	478	226	125	78	45	4	-	26.3	23.8
Limerick County	582	231	178	113	50	10	-	27.3	25.9
North Tipperary	375	145	116	58	49	7	-	27.6	25.1
South Tipperary	441	196	136	69	36	4	-	26.5	24.7
Waterford City	360	164	108	48	33	7	-	26.5	24.2
Waterford County	317	113	96	72	30	6	-	27.8	26.2
CONNACHT	2,067	789	623	366	220	66	3	27.6	26.0
Galway City	348	133	109	66	33	6	1	27.2	26.2
Galway County	600	216	178	116	66	22	2	27.9	26.0
Leitrim	125	52	39	21	7	6	-	27.2	25.6
Mayo	497	193	143	81	61	19	-	27.8	26.2
Roscommon	200	75	66	31	24	4	-	27.5	25.6
Sligo	297	120	88	51	29	9	-	27.3	25.5
ULSTER (PART OF)	1,242	568	352	192	106	24	-	26.4	24.5
Cavan	314	155	84	48	24	3	-	26.0	24.2
Donegal	683	311	193	106	57	16	-	26.5	24.7
Monaghan	245	102	75	38	25	5	-	26.7	24.3
REGIONAL AUTHORITIES:									
Border	2,391	1,046	725	378	191	51	-	26.6	24.8
Midland	1,403	614	406	249	113	19	2	26.7	24.8
West	1,645	617	496	294	184	51	3	27.7	26.1
Dublin	7,450	2,773	2,208	1,447	824	197	1	27.7	26.0
Mid-East	2,825	1,017	861	592	292	62	1	27.6	26.0
Mid-West	1,903	788	544	340	195	36	-	27.2	25.2
South-East	2,720	1,094	843	493	241	49	-	27.1	25.2
South-West	2,833	1,066	877	555	262	71	2	27.4	25.7

Table 8 Deaths registered by county of residence of deceased

Area of residence	Total	Male	Female	Rate ^(a)
STATE	28,050	14,299	13,751	6.5
LEINSTER	13,862	6,929	6,933	5.9
Carlow	322	163	159	6.2
Dublin City	4,263	2,062	2,201	8.2
South Dublin	888	473	415	3.5
Fingal	808	422	386	3.3
Dun Laoghaire Rathdown	1,249	570	679	6.3
Kildare	800	431	369	4.2
Kilkenny	546	297	249	6.1
Laois	390	207	183	5.7
Longford	318	156	162	9.0
Louth	745	348	397	6.5
Meath	818	412	406	4.9
Offaly	440	222	218	6.1
Westmeath	554	290	264	6.8
Wexford	904	482	422	6.7
Wicklow	817	394	423	6.3
MUNSTER	8,475	4,376	4,099	7.1
Clare	768	396	372	6.8
Cork City	1,094	561	533	9.0
Cork County	2,183	1,089	1,094	5.9
Kerry	1,138	628	510	8.0
Limerick City	421	218	203	7.8
Limerick County	915	471	444	6.8
North Tipperary	601	315	286	8.9
South Tipperary	606	344	262	7.1
Waterford City	288	140	148	6.2
Waterford County	461	214	247	7.2
CONNACHT	3,715	1,954	1,761	7.2
Galway City	221	110	111	3.0
Galway County	1,240	633	607	7.6
Leitrim	245	121	124	8.3
Mayo	1,052	566	486	8.3
Roscommon	490	286	204	8.1
Sligo	467	238	229	7.5
ULSTER (PART OF)	1,998	1,040	958	7.3
Cavan	522	285	237	8.0
Donegal	1,040	540	500	6.9
Monaghan	436	215	221	7.6
REGIONAL AUTHORITIES:				
Border	3,455	1,747	1,708	7.2
Midland	1,702	875	827	6.5
West	3,003	1,595	1,408	7.2
Dublin	7,208	3,527	3,681	6.0
Mid-East	2,435	1,237	1,198	4.9
Mid-West	2,705	1,400	1,305	7.4
South-East	3,127	1,640	1,487	6.6
South-West	4,415	2,278	2,137	7.0

(a) Deaths per year per 1,000 population. Annual rates based on estimated 2007 population.

Table 9 Deaths registered by cause of death and county of residence of deceased

Area of residence	Total deaths	Malignant Neoplasms	Diseases of the Circulatory system	Diseases of the Respiratory system	External causes	All other causes
STATE	28,050	7,844	9,931	3,541	1,676	5,058
LEINSTER	13,862	4,029	4,639	1,709	897	2,588
Carlow	322	93	109	40	23	57
Dublin City	4,263	1,217	1,412	546	285	803
South Dublin	888	274	288	89	70	167
Fingal	808	278	231	104	52	143
Dun Laoghaire Rathdown	1,249	404	390	156	55	244
Kildare	800	218	265	78	66	173
Kilkenny	546	155	178	71	29	113
Laois	390	101	135	59	25	70
Longford	318	88	109	47	15	59
Louth	745	205	272	91	49	128
Meath	818	246	289	107	47	129
Offaly	440	143	154	54	30	59
Westmeath	554	145	198	65	44	102
Wexford	904	233	341	101	56	173
Wicklow	817	229	268	101	51	168
MUNSTER	8,475	2,288	3,161	1,090	478	1,458
Clare	768	180	284	119	45	140
Cork City	1,094	287	402	141	83	181
Cork County	2,183	597	815	226	137	408
Kerry	1,138	294	441	161	53	189
Limerick City	421	104	143	59	34	81
Limerick County	915	262	344	149	37	123
North Tipperary	601	164	257	61	23	96
South Tipperary	606	177	214	72	27	116
Waterford City	288	87	95	37	14	55
Waterford County	461	136	166	65	25	69
CONNACHT	3,715	994	1,388	474	200	659
Galway City	221	51	69	36	17	48
Galway County	1,240	360	453	147	67	213
Leitrim	245	56	102	39	7	41
Mayo	1,052	260	420	125	55	192
Roscommon	490	127	178	76	27	82
Sligo	467	140	166	51	27	83
ULSTER (PART OF)	1,998	533	743	268	101	353
Cavan	522	131	191	80	32	88
Donegal	1,040	293	394	132	46	175
Monaghan	436	109	158	56	23	90
REGIONAL AUTHORITIES:						
Border	3,455	934	1,283	449	184	605
Midland	1,702	477	596	225	114	290
West	3,003	798	1,120	384	166	535
Dublin	7,208	2,173	2,321	895	462	1,357
Mid-East	2,435	693	822	286	164	470
Mid-West	2,705	710	1,028	388	139	440
South-East	3,127	881	1,103	386	174	583
South-West	4,415	1,178	1,658	528	273	778

Table 10 Deaths registered classified by cause and age group

Cause of Death	65 COD Code	ICD-10 Code	Total Deaths	Age Group										
				Under 1	1-4	5-14	15-24	25-34	35-44	45-54	55-64	65-74	75-84	85 and over
Total deaths	0	A00-Y89	28,050	221	56	68	353	486	686	1,437	2,919	4,923	8,936	7,965
Infectious and parasitic diseases:-	1	A00-B99	208	5	5	1	2	5	9	11	17	27	76	50
Tuberculosis	2	A15-A19,B90	45	-	-	-	-	1	1	4	1	10	18	10
Meningococcal infection	3	A39	7	-	4	-	1	-	-	-	-	-	2	-
AIDS (HIV Disease)	4	B20-B24	8	-	-	-	-	2	2	2	2	-	-	-
Viral Hepatitis	5	B15-B19	10	-	-	-	-	2	3	1	2	-	1	1
Other infectious and parasitic diseases			138	5	1	1	1	-	3	4	12	17	55	39
Neoplasms	6	C00-D48	8,034	2	6	17	21	55	186	554	1,357	2,159	2,557	1,120
Malignant Neoplasms of the:-	7	C00-C97	7,844	2	5	17	21	54	184	550	1,344	2,125	2,479	1,063
Lip, oral cavity, pharynx	8	C00-C14	125	-	-	-	-	-	1	13	38	40	17	16
Oesophagus	9	C15	314	-	-	-	-	-	12	22	52	83	103	42
Stomach	10	C16	338	-	-	-	-	3	12	25	53	102	101	42
Colon	11	C18	529	-	-	-	1	-	2	21	77	137	195	96
Rectum and anus	12	C19-C21	393	-	-	-	-	3	12	30	56	117	134	41
Liver and the intrahepatic bile ducts	13	C22	200	-	-	-	1	-	3	13	37	56	59	31
Pancreas	14	C25	453	-	-	-	-	1	7	31	78	114	154	68
Larynx and trachea/bronchus /lung	15	C32-C34	1,745	-	-	-	-	2	16	110	374	549	545	149
Skin	16	C43	99	-	-	1	-	7	5	15	15	26	22	8
Breast	17	C50	629	-	-	-	-	5	36	90	136	140	141	81
Cervix uteri	18	C53	81	-	-	-	-	4	10	24	12	15	12	4
Other parts of uterus	19	C54-C55	76	-	-	-	-	-	1	4	16	28	16	11
Ovary	20	C56	262	-	-	-	1	3	7	24	49	94	66	18
Prostate	21	C61	503	-	-	-	-	-	-	7	32	109	230	125
Kidney	22	C64	161	-	-	-	-	2	6	17	18	52	51	15
Bladder	23	C67	170	-	-	-	-	-	4	9	14	37	70	36
Lymph/haematopoietic tissue	24	C81-C96	609	1	-	3	4	6	14	27	99	157	207	91
Other malignant neoplasms			1,157	1	5	13	14	18	36	68	188	269	356	189
Diseases of the blood and blood-forming organs, immunological disorders	25	D50-D89	106	-	3	-	-	-	3	4	12	19	21	44
Endocrine, Nutritional and metabolic diseases	26	E00-E90	722	4	4	4	8	12	22	26	47	120	270	205
Diabetes mellitus	27	E10-E14	517	-	-	-	-	3	11	16	31	90	212	154
Mental and behavioural disorders	28	F00-F99	573	-	-	-	9	10	22	25	26	39	175	267
Alcohol abuse (including alcoholic psychosis)	29	F10	80	-	-	-	-	4	20	21	19	10	5	1
Drug dependence, toxicomania	30	F11-F16,F18-F19	19	-	-	-	8	5	2	2	1	1	-	-
Diseases of the nervous system and the sense organs	31	G00-H95	847	10	8	9	13	10	20	38	66	101	313	259
Meningitis	32	G00-G03	11	1	2	-	-	-	1	2	3	1	1	1
Diseases of the Circulatory System:-	33	I00-I99	9,931	4	-	3	23	47	104	340	807	1,567	3,396	3,640
Ischaemic heart disease	34	I20-I25	5,368	-	-	-	1	11	56	208	538	946	1,821	1,787
of which: (Acute myocardial infarction)		I21	2,759	-	-	-	1	5	33	77	247	452	993	951
Other heart disease	35	I30-I33,I39-I52	1,250	4	-	2	14	15	18	38	86	155	394	524
Cerebrovascular disease	36	I60-I69	2,034	-	-	-	6	12	17	67	98	226	733	875
Other diseases of circulatory system			1,279	-	-	1	2	9	13	27	85	240	448	454

Diseases of the Respiratory system	37	J00-J99	3,541	2	1	4	2	5	16	52	179	456	1,312	1,512
Influenza	38	J10-J11	2	-	-	1	-	-	-	-	-	-	-	1
Pneumonia	39	J12-J19	1,332	-	-	2	1	1	6	28	43	106	405	740
Chronic Lower respiratory disease	40	J40-J47	1,490	-	-	1	1	2	5	10	108	250	643	470
of which: <i>Asthma</i>	41	J45-J46	55	-	-	1	1	2	1	2	6	10	19	13
Other diseases of the respiratory system			717	2	1	-	-	2	5	14	28	100	264	301
Diseases of the Digestive system	42	K00-K93	1,104	2	1	-	-	16	37	135	149	182	307	275
Ulcer of stomach, duodenum and jejunum	43	K25-K28	107	-	-	-	-	2	1	4	14	18	33	35
Chronic liver disease	44	K70,K73-K74	272	-	-	-	-	4	23	81	74	53	27	10
Other diseases of the digestive system			725	2	1	-	-	10	13	50	61	111	247	230
Diseases of the skin and subcutaneous tissue	45	L00-L99	57	-	-	-	-	-	1	1	4	8	23	20
Diseases of the musculoskeletal system/connective tissue	46	M00-M99	229	1	-	-	-	3	2	9	20	39	71	84
Rheumatoid arthritis and osteoarthritis	47	M05-M06,M15-M19	89	-	-	-	-	-	1	5	8	12	28	35
Diseases of the genitourinary system	48	N00-N99	663	-	-	-	2	2	2	1	27	64	235	330
Diseases of the kidney and ureter	49	N00-N29	463	-	-	-	2	2	2	1	22	46	163	225
Complications of pregnancy, childbirth and puerperium	50	O00-O99	1	-	-	-	-	-	-	1	-	-	-	-
Certain conditions originating in the perinatal period¹	51	P00-P96	66	64	1	1	-	-	-	-	-	-	-	-
Congenital malformations and chromosomal abnormalities	52	Q00-Q99	192	101	10	10	13	14	8	9	15	5	6	1
Congenital malformations of the:-														
Nervous system	53	Q00-Q07	27	12	1	2	5	2	3	1	1	-	-	-
Circulatory system	54	Q20-Q28	60	32	4	2	7	6	2	1	3	1	1	1
Symptoms, signs, abnormal findings, ill-defined causes	55	R00-R99	100	25	3	-	2	7	5	9	13	5	7	24
Sudden infant death syndrome	56	R95	27	24	3	-	-	-	-	-	-	-	-	-
Unknown and unspecified causes	57	R96-R99	28	1	-	-	2	5	3	6	7	3	-	1
External causes of injury and poisoning	58	V01-Y89	1,676	1	14	19	258	300	249	222	180	132	167	134
Accidents	59	V01-X59	1,010	1	13	14	146	149	126	120	96	93	126	126
of which: <i>Transport accidents</i>	60	V01-V99	299	1	6	7	90	55	29	29	25	19	33	5
<i>Accidental falls</i>	61	W00-W19	242	-	3	-	2	8	22	26	23	35	48	75
<i>Accidental poisoning</i>	62	X40-X49	235	-	-	-	34	67	53	42	22	13	4	-
<i>other accidents</i>			234	-	4	7	20	19	22	23	26	26	41	46
Suicide and intentional self harm	63	X60-X84	460	-	-	4	85	102	96	79	57	26	11	-
Homicide/assault	64	X85-Y09	40	-	-	-	12	21	3	-	3	1	-	-
Events of undetermined intent	65	Y10-Y34	119	-	1	1	15	27	22	21	19	5	7	1
All other external causes			47	-	-	-	-	1	2	2	5	7	23	7

¹ Stillbirths not included.

Table 11 Male deaths registered classified by cause and age group

Cause of Death	65 COD Code	ICD-10 Code	Total Males	Age Group										
				Under 1	1-4	5-14	15-24	25-34	35-44	45-54	55-64	65-74	75-84	85 and over
Total Male Deaths	0	A00-Y89	14,299	123	30	37	265	349	453	871	1,842	2,949	4,586	2,794
Infectious and parasitic diseases:-	1	A00-B99	110	2	1	-	1	1	7	8	13	13	40	24
Tuberculosis	2	A15-A19,B90	28	-	-	-	-	-	1	3	1	5	11	7
Meningococcal infection	3	A39	3	-	1	-	1	-	-	-	-	-	1	-
AIDS (HIV Disease)	4	B20-B24	4	-	-	-	-	1	1	1	1	-	-	-
Viral Hepatitis	5	B15-B19	7	-	-	-	-	-	3	1	2	-	1	-
Other infectious and parasitic diseases			68	2	-	-	-	-	2	3	9	8	27	17
Neoplasms	6	C00-D48	4,263	2	2	7	8	22	81	259	765	1,225	1,382	510
Malignant Neoplasms of the:-	7	C00-C97	4,168	2	2	7	8	22	80	255	760	1,201	1,344	487
Lip, oral cavity, pharynx	8	C00-C14	89	-	-	-	-	-	-	8	32	30	11	8
Oesophagus	9	C15	201	-	-	-	-	-	10	18	40	58	59	16
Stomach	10	C16	214	-	-	-	-	1	7	16	38	69	63	20
Colon	11	C18	298	-	-	-	-	-	2	11	47	88	111	39
Rectum and anus	12	C19-C21	235	-	-	-	-	1	7	10	34	76	82	25
Liver and the intrahepatic bile ducts	13	C22	106	-	-	-	-	-	3	12	23	34	27	7
Pancreas	14	C25	230	-	-	-	-	1	7	20	48	66	62	26
Larynx and trachea/bronchus /lung	15	C32-C34	1,090	-	-	-	-	2	9	66	256	356	322	79
Skin	16	C43	55	-	-	-	-	5	4	8	8	15	11	4
Breast	17	C50	5	-	-	-	-	-	1	1	1	1	1	-
Cervix uteri	18	C53	-	-	-	-	-	-	-	-	-	-	-	-
Other parts of uterus	19	C54-C55	-	-	-	-	-	-	-	-	-	-	-	-
Ovary	20	C56	-	-	-	-	-	-	-	-	-	-	-	-
Prostate	21	C61	503	-	-	-	-	-	-	7	32	109	230	125
Kidney	22	C64	98	-	-	-	-	1	3	14	10	33	31	6
Bladder	23	C67	114	-	-	-	-	-	2	6	12	20	48	26
Lymph/haematopoietic tissue	24	C81-C96	336	1	-	1	2	3	6	19	60	94	109	41
Other malignant neoplasms			594	1	2	6	6	8	19	39	119	152	177	65
Diseases of the blood and blood-forming organs, immunological disorders	25	D50-D89	44	-	1	-	-	-	2	3	6	11	11	10
Endocrine, Nutritional and metabolic diseases	26	E00-E90	364	2	3	1	4	5	12	15	34	63	151	74
Diabetes mellitus	27	E10-E14	280	-	-	-	-	2	5	8	24	45	133	63
Mental and behavioural disorders	28	F00-F99	234	-	-	-	6	5	14	15	15	27	83	69
Alcohol abuse (including alcoholic psychosis)	29	F10	52	-	-	-	-	1	13	12	13	7	5	1
Drug dependence, toxicomania	30	F11-F16,F18-F19	13	-	-	-	6	4	1	1	-	1	-	-
Diseases of the nervous system and the sense organs	31	G00-H95	382	7	6	4	9	6	11	23	36	55	149	76
Meningitis	32	G00-G03	6	-	2	-	-	-	-	1	1	2	-	-
Diseases of the Circulatory System:-	33	I00-I99	4,911	2	-	2	14	34	73	243	610	1,042	1,689	1,202
Ischaemic heart disease	34	I20-I25	2,947	-	-	-	1	8	44	170	435	670	986	633
of which: (Acute myocardial infarction)		I21	1,477	-	-	-	1	5	25	62	198	338	513	335
Other heart disease	35	I30-I33,I39-I52	583	2	-	2	8	13	13	27	63	100	180	175
Cerebrovascular disease	36	I60-I69	804	-	-	-	3	6	10	28	57	127	317	256
Other diseases of circulatory system			577	-	-	-	2	7	6	18	55	145	206	138

Diseases of the Respiratory system	37	J00-J99	1,660	1	1	4	1	3	10	33	105	254	692	556
Influenza	38	J10-J11	1	-	-	1	-	-	-	-	-	-	-	-
Pneumonia	39	J12-J19	523	-	-	2	-	1	6	18	24	58	184	230
Chronic Lower respiratory disease	40	J40-J47	769	-	-	1	1	1	1	6	63	134	360	202
<i>of which: Asthma</i>	41	J45-J46	16	-	-	1	1	1	-	1	3	3	3	3
Other diseases of the respiratory system			367	1	1	-	-	1	3	9	18	62	148	124
Diseases of the Digestive system	42	K00-K93	566	2	-	-	-	10	26	96	84	115	136	97
Ulcer of stomach, duodenum and jejunum	43	K25-K28	63	-	-	-	-	1	1	2	6	14	23	16
Chronic liver disease	44	K70,K73-K74	180	-	-	-	-	3	17	60	45	33	19	3
Other diseases of the digestive system			323	2	-	-	-	6	8	34	33	68	94	78
Diseases of the skin and subcutaneous tissue	45	L00-L99	23	-	-	-	-	-	1	1	4	3	12	2
Diseases of the musculoskeletal system/connective tissue	46	M00-M99	75	-	-	-	-	2	-	7	9	14	29	14
Rheumatoid arthritis and osteoarthritis	47	M05-M06,M15-M19	28	-	-	-	-	-	-	4	4	4	10	6
Diseases of the genitourinary system	48	N00-N99	277	-	-	-	-	2	2	1	16	33	118	105
Diseases of the kidney and ureter	49	N00-N29	210	-	-	-	-	2	2	1	15	26	88	76
Complications of pregnancy, childbirth and puerperium	50	O00-O99	-	-	-	-	-	-	-	-	-	-	-	-
Certain conditions originating in the perinatal period¹	51	P00-P96	39	38	-	1	-	-	-	-	-	-	-	-
Congenital malformations and chromosomal abnormalities	52	Q00-Q99	105	53	6	6	8	10	4	3	11	1	2	1
Congenital malformations of the:-														
Nervous system	53	Q00-Q07	14	8	-	1	3	1	-	-	1	-	-	-
Circulatory system	54	Q20-Q28	34	14	4	1	5	5	2	-	2	-	-	1
Symptoms, signs.,abnormal findings, ill-defined causes	55	R00-R99	53	13	2	-	2	3	5	5	10	3	2	8
Sudden infant death syndrome	56	R95	14	12	2	-	-	-	-	-	-	-	-	-
Unknown and unspecified causes	57	R96-R99	17	1	-	-	2	2	3	3	4	2	-	-
External causes of injury and poisoning	58	V01-Y89	1,193	1	8	12	212	246	205	159	124	90	90	46
Accidents	59	V01-X59	673	1	8	9	114	118	101	82	66	59	72	43
<i>of which: Transport accidents</i>	60	V01-V99	224	1	3	4	66	50	27	22	20	9	18	4
<i>Accidental falls</i>	61	W00-W19	129	-	2	-	2	5	18	17	16	22	25	22
<i>Accidental poisoning</i>	62	X40-X49	160	-	-	-	29	47	38	23	11	10	2	-
<i>other accidents</i>			160	-	3	5	17	16	18	20	19	18	27	17
Suicide and intentional self harm	63	X60-X84	378	-	-	3	73	89	81	62	39	22	9	-
Homicide/assault	64	X85-Y09	35	-	-	-	11	17	3	-	3	1	-	-
Events of undetermined intent	65	Y10-Y34	88	-	-	-	14	21	20	13	13	5	2	-
All other external causes			19	-	-	-	-	1	-	2	3	3	7	3

¹ Stillbirths not included.

Table 12 Female deaths registered classified by cause and age group

Cause of Death	65 COD Code	ICD-10 Code	Total Females	Age Group										
				Under 1	1-4	5-14	15-24	25-34	35-44	45-54	55-64	65-74	75-84	85 and over
Total Female Deaths	0	A00-Y89	13,751	98	26	31	88	137	233	566	1,077	1,974	4,350	5,171
Infectious and parasitic diseases:-	1	A00-B99	98	3	4	1	1	4	2	3	4	14	36	26
Tuberculosis	2	A15-A19,B90	17	-	-	-	-	1	-	1	-	5	7	3
Meningococcal infection	3	A39	4	-	3	-	-	-	-	-	-	-	1	-
AIDS (HIV Disease)	4	B20-B24	4	-	-	-	-	1	1	1	1	-	-	-
Viral Hepatitis	5	B15-B19	3	-	-	-	-	2	-	-	-	-	-	1
Other infectious and parasitic diseases			70	3	1	1	1	-	1	1	3	9	28	22
Neoplasms	6	C00-D48	3,771	-	4	10	13	33	105	295	592	934	1,175	610
Malignant Neoplasms of the:-	7	C00-C97	3,676	-	3	10	13	32	104	295	584	924	1,135	576
Lip, oral cavity, pharynx	8	C00-C14	36	-	-	-	-	-	1	5	6	10	6	8
Oesophagus	9	C15	113	-	-	-	-	-	2	4	12	25	44	26
Stomach	10	C16	124	-	-	-	-	2	5	9	15	33	38	22
Colon	11	C18	231	-	-	-	1	-	-	10	30	49	84	57
Rectum and anus	12	C19-C21	158	-	-	-	-	2	5	20	22	41	52	16
Liver and the intrahepatic bile ducts	13	C22	94	-	-	-	1	-	-	1	14	22	32	24
Pancreas	14	C25	223	-	-	-	-	-	-	11	30	48	92	42
Larynx and trachea/bronchus /lung	15	C32-C34	655	-	-	-	-	-	7	44	118	193	223	70
Skin	16	C43	44	-	-	1	-	2	1	7	7	11	11	4
Breast	17	C50	624	-	-	-	-	5	35	89	135	139	140	81
Cervix uteri	18	C53	81	-	-	-	-	4	10	24	12	15	12	4
Other parts of uterus	19	C54-C55	76	-	-	-	-	-	1	4	16	28	16	11
Ovary	20	C56	262	-	-	-	-	3	7	24	49	94	66	18
Prostate	21	C61	-	-	-	-	-	-	-	-	-	-	-	-
Kidney	22	C64	63	-	-	-	-	1	3	3	8	19	20	9
Bladder	23	C67	56	-	-	-	-	-	2	3	2	17	22	10
Lymph/haematopoietic tissue	24	C81-C96	273	-	-	2	2	3	8	8	39	63	98	50
Other malignant neoplasms			563	-	3	7	8	10	17	29	69	117	179	124
Diseases of the blood and blood-forming organs, immunological disorders	25	D50-D89	62	-	2	-	-	-	1	1	6	8	10	34
Endocrine, Nutritional and metabolic diseases	26	E00-E90	358	2	1	3	4	7	10	11	13	57	119	131
Diabetes mellitus	27	E10-E14	237	-	-	-	-	1	6	8	7	45	79	91
Mental and behavioural disorders	28	F00-F99	339	-	-	-	3	5	8	10	11	12	92	198
Alcohol abuse (including alcoholic psychosis)	29	F10	28	-	-	-	-	3	7	9	6	3	-	-
Drug dependence, toxicomania	30	F11-F16,F18-F19	6	-	-	-	2	1	1	1	1	-	-	-
Diseases of the nervous system and the sense organs	31	G00-H95	465	3	2	5	4	4	9	15	30	46	164	183
Meningitis	32	G00-G03	5	1	-	-	-	-	-	-	1	1	1	1
Diseases of the Circulatory System:-	33	I00-I99	5,020	2	-	1	9	13	31	97	197	525	1,707	2,438
Ischaemic heart disease	34	I20-I25	2,421	-	-	-	-	3	12	38	103	276	835	1,154
of which: (Acute myocardial infarction)		I21	1,282	-	-	-	-	-	8	15	49	114	480	616
Other heart disease	35	I30-I33,I39-I52	667	2	-	-	6	2	5	11	23	55	214	349
Cerebrovascular disease	36	I60-I69	1,230	-	-	-	3	6	7	39	41	99	416	619
Other diseases of circulatory system			702	-	-	1	-	2	7	9	30	95	242	316

Diseases of the Respiratory system	37	J00-J99	1,881	1	-	-	1	2	6	19	74	202	620	956
Influenza	38	J10-J11	1	-	-	-	-	-	-	-	-	-	-	1
Pneumonia	39	J12-J19	809	-	-	-	1	-	-	10	19	48	221	510
Chronic Lower respiratory disease	40	J40-J47	721	-	-	-	-	1	4	4	45	116	283	268
<i>of which: Asthma</i>	41	<i>J45-J46</i>	39	-	-	-	-	1	1	1	3	7	16	10
Other diseases of the respiratory system			350	1	-	-	-	1	2	5	10	38	116	177
Diseases of the Digestive system	42	K00-K93	538	-	1	-	-	6	11	39	65	67	171	178
Ulcer of stomach, duodenum and jejunum	43	K25-K28	44	-	-	-	-	1	-	2	8	4	10	19
Chronic liver disease	44	K70,K73-K74	92	-	-	-	-	1	6	21	29	20	8	7
Other diseases of the digestive system			402	-	1	-	-	4	5	16	28	43	153	152
Diseases of the skin and subcutaneous tissue	45	L00-L99	34	-	-	-	-	-	-	-	-	5	11	18
Diseases of the musculoskeletal system/connective tissue	46	M00-M99	154	1	-	-	-	1	2	2	11	25	42	70
Rheumatoid arthritis and osteoarthritis	47	M05-M06,M15-M19	61	-	-	-	-	-	1	1	4	8	18	29
Diseases of the genitourinary system	48	N00-N99	386	-	-	-	2	-	-	-	11	31	117	225
Diseases of the kidney and ureter	49	N00-N29	253	-	-	-	2	-	-	-	7	20	75	149
Complications of pregnancy, childbirth and puerperium	50	O00-O99	1	-	-	-	-	-	-	1	-	-	-	-
Certain conditions originating in the perinatal period¹	51	P00-P96	27	26	1	-	-	-	-	-	-	-	-	-
Congenital malformations and chromosomal abnormalities	52	Q00-Q99	87	48	4	4	5	4	4	6	4	4	4	-
Congenital malformations of the:-														
Nervous system	53	Q00-Q07	13	4	1	1	2	1	3	1	-	-	-	-
Circulatory system	54	Q20-Q28	26	18	-	1	2	1	-	1	1	1	1	-
Symptoms, signs, abnormal findings, ill-defined causes	55	R00-R99	47	12	1	-	-	4	-	4	3	2	5	16
Sudden infant death syndrome	56	R95	13	12	1	-	-	-	-	-	-	-	-	-
Unknown and unspecified causes	57	R96-R99	11	-	-	-	-	3	-	3	3	1	-	1
External causes of injury and poisoning	58	V01-Y89	483	-	6	7	46	54	44	63	56	42	77	88
Accidents	59	V01-X59	337	-	5	5	32	31	25	38	30	34	54	83
<i>of which: Transport accidents</i>	60	<i>V01-V99</i>	75	-	3	3	24	5	2	7	5	10	15	1
<i>Accidental falls</i>	61	<i>W00-W19</i>	113	-	1	-	-	3	4	9	7	13	23	53
<i>Accidental poisoning</i>	62	<i>X40-X49</i>	75	-	-	-	5	20	15	19	11	3	2	-
<i>other accidents</i>			74	-	1	2	3	3	4	3	7	8	14	29
Suicide and intentional self harm	63	X60-X84	82	-	-	1	12	13	15	17	18	4	2	-
Homicide/assault	64	X85-Y09	5	-	-	-	1	4	-	-	-	-	-	-
Events of undetermined intent	65	Y10-Y34	31	-	1	1	1	6	2	8	6	-	5	1
All other external causes			28	-	-	-	-	-	2	-	2	4	16	4

¹ Stillbirths not included.

Table 13 Infant and neonatal mortality by area of residence of deceased

Area of residence	Infant mortality		Neonatal mortality	
	Number	Rate	Number	Rate
STATE	221	3.1	149	2.1
LEINSTER	130	3.3	87	2.2
Carlow	2	2.1	1	1.0
Dublin City	29	4.1	17	2.4
South Dublin	14	3.0	10	2.1
Fingal	10	1.9	7	1.3
Dun Laoghaire Rathdown	10	3.9	5	1.9
Kildare	15	3.9	11	2.9
Kilkenny	4	3.2	3	2.4
Laois	2	1.6	2	1.6
Longford	2	3.4	1	1.7
Louth	3	1.7	1	0.6
Meath	14	4.1	10	2.9
Offaly	3	2.5	3	2.5
Westmeath	5	3.6	4	2.9
Wexford	13	5.7	9	3.9
Wicklow	4	1.7	3	1.3
MUNSTER	61	3.2	42	2.2
Clare	11	6.2	9	5.1
Cork City	7	4.9	3	2.1
Cork County	19	2.9	11	1.7
Kerry	6	2.9	4	2.0
Limerick City	3	3.4	3	3.4
Limerick County	6	2.9	5	2.4
North Tipperary	3	2.5	2	1.6
South Tipperary	2	1.7	2	1.7
Waterford City	2	2.6	1	1.3
Waterford County	2	2.0	2	2.0
CONNACHT	23	2.9	14	1.8
Galway City	0	0.0	0	0.0
Galway County	7	2.5	4	1.4
Leitrim	2	4.2	2	4.2
Mayo	10	5.4	5	2.7
Roscommon	1	1.3	1	1.3
Sligo	3	3.3	2	2.2
ULSTER (PART OF)	7	1.8	6	1.5
Cavan	0	0.0	0	0.0
Donegal	7	3.3	6	2.8
Monaghan	0	0.0	0	0.0
REGIONAL AUTHORITIES:				
Border	15	2.1	11	1.5
Midland	12	2.7	10	2.3
West	18	2.8	10	1.6
Dublin	63	3.2	39	2.0
Mid-East	33	3.4	24	2.5
Mid-West	23	3.9	19	3.2
South-East	25	3.3	18	2.4
South-West	32	3.2	18	1.8

Infant mortality rates: Deaths of infants under one year per 1,000 live births, classified by area of residence of mother.

Neonatal mortality rates: Deaths of infants under 28 days per 1,000 live births, classified by area of residence of mother.

Infant and neonatal mortality rates in some areas, based on small numbers are subject to considerable fluctuation and caution should be exercised in their interpretation.

Table 14 Divorce, Judicial Separation and Nullity applications received and granted by the courts in year ending December 2007

Circuit Court	County	Divorce Applications		Judicial Separation Applications		Nullity Applications	
		Received	Granted	Received	Granted	Received	Granted
Leinster							
Carlow	Carlow	45	53	15	9	1	2
Dublin	Dublin	1,454	1,286	534	465	10	5
Naas	Kildare	139	160	56	65	1	-
Kilkenny	Kilkenny	74	86	24	28	-	-
Portlaoise	Laois	56	34	20	9	-	-
Longford	Longford	25	20	11	5	-	-
Dundalk	Louth	88	122	39	45	-	4
Trim	Meath	110	132	57	44	3	-
Tullamore	Offaly	49	36	24	11	-	-
Mullingar	Westmeath	82	72	37	8	1	1
Wexford	Wexford	118	111	35	24	-	-
Wicklow	Wicklow	141	117	62	26	-	-
Munster							
Ennis	Clare	86	38	47	11	6	-
Cork	Cork	405	471	172	145	11	9
Tralee	Kerry	82	84	35	26	-	-
Limerick	Limerick	204	91	107	31	1	1
Clonmel	Tipperary	131	146	45	21	3	1
Waterford	Waterford	113	79	37	19	2	-
Connacht							
Galway	Galway	231	123	160	71	8	2
Carrick on							
Shannon	Leitrim	29	25	6	7	2	-
Castlebar	Mayo	130	79	49	26	1	2
Roscommon	Roscommon	45	41	14	9	-	-
Sligo	Sligo	59	56	22	17	4	-
Ulster							
Cavan	Cavan	41	50	27	14	3	-
Letterkenny	Donegal	105	110	35	20	1	-
Monaghan	Monaghan	39	36	19	11	2	-
Total Circuit Court		4081	3658	1689	1167	60	27
High Court		28	26	52	18	-	1
Supreme Court*							
TOTAL		4109	3684	1741	1185	60	28

*Supreme Court figures not finalised

Source: Courts Service

Appendix

Glossary of terms

NUTS III Regional Authority areas

Border, Midland, West, Dublin, Mid-East, Mid-West, South-East, South-West

Border: Cavan, Donegal, Leitrim, Louth, Monaghan, Sligo.

Midland: Laois, Longford, Offaly, Westmeath.

West: Galway City, Galway County, Mayo, Roscommon.

Dublin: Dublin City, South Dublin, Fingal, Dun Laoghaire-Rathdown.

Mid-East: Kildare, Meath, Wicklow.

Mid-West: Clare, Limerick City, Limerick County, North Tipperary.

South-East: Carlow, Kilkenny, South Tipperary, Waterford City, Waterford County, Wexford.

South-West: Cork City, Cork County, Kerry.

Causes of death Eurostat shortlist (August 1998)

Nr	Disease or external cause	ICD-9 Code	ICD-10 Code
00	All causes of death	001-E999	A00-Y89
01	Infectious and Parasitic Diseases:-	001-139,279.8	A00-B99
02	Tuberculosis	010-018,137	A15-A19,B90
03	Meningococcal Infection	036	A39
04	AIDS (HIV Disease)	042-044,279.8	B20-B24
05	Viral Hepatitis	070	B15-B19
	other Infectious and Parasitic Diseases	Rem (001-139)	Rem (A00-B99)
06	Neoplasms	140-239	C00-D48
07	Malignant Neoplasms of the:-	140-208	C00-C97
08	Lip, Oral Cavity, Pharynx	140-149	C00-C14
09	Oesophagus	150	C15
10	Stomach	151	C16
11	Colon	153	C18
12	Rectum and Anus	154	C19-C20-C21
13	Liver and the Intrahepatic Bile Ducts	155	C22
14	Pancreas	157	C25
15	Larynx and Trachea/Bronchus/Lung	161-162	C32-C34
16	Skin	172	C43
17	Breast	174-175	C50
18	Cervix Uteri	180	C53
19	Other Parts of the Uterus	179,182	C54-C55
20	Ovary	183.0	C56
21	Prostate	185	C61
22	Kidney	189.0	C64
23	Bladder	188	C67
24	Lymph/Haematopoietic Tissue	200-208	C81-C96
	other Malignant Neoplasms	Rem (140-208)	Rem. (C00-C97)
25	Diseases of the Blood and Blood-forming Organs, Immunological disorders ¹	279-289	D50-D89
26	Endocrine, Nutritional and Metabolic Diseases	240-278	E00-E90
27	Diabetes Mellitus	250	E10-E14
28	Mental and Behavioural Disorders	290-319	F00-F99
29	Alcohol abuse (including Alcoholic Psychosis)	291,303	F10
30	Drug Dependence, Toxicomania	304-305	F11-F16,F18-F19
31	Diseases of the Nervous System and the Sense Organs	320-389	G00-H95
32	Meningitis	320-322	G00-G03
33	Diseases of the Circulatory System:-	390-459	I00-I99
34	Ischaemic Heart Disease	410-414	I20-I25
	<i>(Acute Myocardial Infarction)</i>	410	I21
35	Other Heart Disease	420-423,425-429	I30-I33,I39-I52
36	Cerebrovascular Disease	430-438	I60-I69
	other Diseases of the Circulatory System	Rem (390-459)	Rem. (I00-I99)
37	Diseases of the Respiratory System	460-519	J00-J99
38	Influenza	487	J10-J11
39	Pneumonia	480-486	J12-J18
40	Chronic Lower Respiratory Disease	490-494,496	J40-J47
41	Asthma	493	J45-J46
	other Diseases of the Respiratory System	Rem (460-519)	Rem. (J00-J99)
42	Diseases of the Digestive System	520-579	K00-K93
43	Ulcer of Stomach, Duodenum and Jejunum	531-534	K25-K28
44	Chronic Liver Disease	571.0-571.9	K70,K73-K74
	other Diseases of the Digestive System	Rem (520-579)	Rem. (K00-K93)
45	Diseases of the Skin and Subcutaneous Tissue	680-709	L00-L99
46	Diseases of the Musculoskeletal System/Connective Tissue	710-739	M00-M99
47	Rheumatoid Arthritis and Osteoarthritis	714-715	M05-M06,M15-M19
48	Diseases of the Genitourinary System	580-629	N00-N99
49	Diseases of the Kidney and Ureter	580-594	N00-N29
50	Complications of Pregnancy, Childbirth and Puerperium	630-676	O00-O99
51	Certain Conditions Originating in the Perinatal Period (stillbirths not included)	760-779	P00-P96
52	Congenital Malformations and Chromosomal Abnormalities	740-759	Q00-Q99
53	Congenital malformations of the Nervous System	740-742	Q00-Q07
54	Congenital malformations of the Circulatory System	745-747	Q20-Q28
55	Symptoms, Signs, Abnormal Findings, Ill-defined Causes	780-799	R00-R99
56	Sudden Infant Death Syndrome	798.0	R95
57	Unknown and Unspecified Causes	798.1-9,799	R96-R99
	Injury and Poisoning	800-999	S00-T98
58	External Causes of Injury and Poisoning (included in the Foregoing)	E800-E999	V01-Y89
59	Accidents	E800-E929	V01-X59
60	Transport Accidents	E800-E848	V01-V99
	Road transport Accidents	E810-E829, E929.0	V01-V80,V87,V89,Y85
	Motor vehicle transport Accidents	E810-E819	
61	Accidental Falls	E880-E888	W00-W19
62	Accidental Poisoning	E850-E869	X40-X49
	other accidents	Rem (E800-E929)	Rem (V01-X59)
63	Suicide and Intentional Self Harm	E950-E959	X60-X84
64	Homicide/Assault	E960-E969	X85-Y09
65	Cause Undetermined	E980-E989	Y10-Y34
	other External Causes	Rem (E930-E999)	

¹ 279.8 not included

Table 1 Estimated Population classified by Sex and Age Group, 2002 - 2007

Sex and Age Group	Persons in April of each year					
	2002	2003	2004	2005	2006 ¹	2007 ²
	000					
Persons						
0 - 4 years	277.6	284.3	290.7	296.5	302.3	312.3
5 - 9 "	264.1	268.7	274.9	280.6	288.3	295.9
10 - 14 "	285.7	281.7	278.2	276.3	273.9	275.6
15 - 19 "	313.2	304.7	298.4	292.8	290.3	286.0
20 - 24 "	328.3	334.0	336.1	339.5	342.5	347.8
25 - 29 "	312.7	317.4	325.4	345.2	373.1	405.1
30 - 34 "	304.7	316.1	325.1	335.8	349.4	358.0
35 - 39 "	290.9	296.4	303.5	312.1	322.1	331.7
40 - 44 "	272.0	279.2	286.0	294.1	301.3	305.8
45 - 49 "	249.6	253.7	259.2	265.4	274.7	279.8
50 - 54 "	230.8	235.1	238.1	243.1	247.1	252.6
55 - 59 "	197.3	206.6	213.9	221.4	225.3	227.4
60 - 64 "	154.3	160.3	166.0	172.1	181.7	190.5
65 - 69 "	133.5	135.0	137.5	140.8	143.4	143.5
70 - 74 "	112.1	113.8	115.7	117.4	119.2	119.2
75 - 79 "	89.8	89.5	90.0	91.0	92.5	92.1
80 - 84 "	58.9	61.7	63.1	64.0	64.9	65.4
85 years and over	41.7	41.9	43.4	45.7	48.0	50.3
Total	3,917.2	3,979.9	4,045.2	4,133.8	4,239.8	4,339.0
Males						
0 - 4 years	142.0	145.4	148.7	151.7	154.6	160.5
5 - 9 "	135.9	137.8	141.2	144.3	148.0	151.3
10 - 14 "	146.1	144.4	142.8	142.0	140.5	141.3
15 - 19 "	160.4	155.9	152.7	149.8	148.2	145.4
20 - 24 "	165.3	167.0	168.2	170.0	172.8	175.0
25 - 29 "	156.1	158.6	162.9	174.1	189.3	204.7
30 - 34 "	152.4	158.2	161.8	168.7	177.5	182.6
35 - 39 "	144.5	147.4	152.4	157.8	163.8	169.1
40 - 44 "	135.3	138.9	142.5	147.1	151.4	153.6
45 - 49 "	125.0	126.9	129.7	132.9	138.0	140.6
50 - 54 "	116.6	118.5	120.1	122.9	124.6	127.1
55 - 59 "	99.8	104.9	108.5	112.0	113.9	114.9
60 - 64 "	77.6	80.7	83.8	86.7	91.6	96.0
65 - 69 "	65.3	66.0	67.3	69.1	70.9	71.3
70 - 74 "	51.7	53.2	54.6	55.7	56.5	56.6
75 - 79 "	37.4	37.3	37.8	38.8	40.1	40.6
80 - 84 "	22.3	23.4	23.9	24.3	24.7	25.0
85 years and over	12.5	12.6	13.2	14.0	14.8	15.5
Total	1,946.2	1,976.9	2,011.9	2,061.8	2,121.2	2,171.1
Females						
0 - 4 years	135.6	138.9	142.0	144.8	147.7	151.8
5 - 9 "	128.2	130.9	133.8	136.3	140.3	144.6
10 - 14 "	139.6	137.3	135.4	134.4	133.4	134.2
15 - 19 "	152.8	148.8	145.7	143.0	142.0	140.6
20 - 24 "	163.0	167.0	167.9	169.5	169.7	172.8
25 - 29 "	156.6	158.8	162.5	171.1	183.8	200.4
30 - 34 "	152.3	157.9	163.4	167.0	171.9	175.3
35 - 39 "	146.4	149.0	151.1	154.4	158.3	162.5
40 - 44 "	136.7	140.3	143.5	147.1	149.9	152.2
45 - 49 "	124.6	126.8	129.6	132.6	136.8	139.3
50 - 54 "	114.3	116.6	118.0	120.2	122.5	125.5
55 - 59 "	97.5	101.6	105.4	109.4	111.4	112.5
60 - 64 "	76.7	79.6	82.2	85.4	90.2	94.6
65 - 69 "	68.2	69.0	70.2	71.7	72.5	72.2
70 - 74 "	60.4	60.6	61.1	61.7	62.6	62.6
75 - 79 "	52.4	52.3	52.2	52.2	52.3	51.5
80 - 84 "	36.6	38.3	39.2	39.7	40.2	40.4
85 years and over	29.2	29.3	30.2	31.7	33.2	34.8
Total	1,971.0	2,002.9	2,033.3	2,072.0	2,118.7	2,167.9

¹ De Facto² Preliminary

Table 2 - Deaths which were registered on the authority of the Registrar General in 2007, classified by principal groups of causes,sex and year of occurrence

Cause of Death		Year of occurrence										Total	
		2005	2004	2003	2002	2001	2000	1999	1998	1997	1996		1995 and earlier
Total deaths	M	210	51	22	11	6	13	11	6	3	3	90	426
	F	108	46	19	12	13	23	7	8	4	2	63	305
Malignant Neoplasms	M	10	7	3	1	3	3	4	2	1	-	12	46
	F	9	11	-	1	3	2	2	5	2	-	13	48
Diseases of the Circulatory system	M	38	12	7	4	1	7	4	3	1	3	40	120
	F	30	20	8	7	6	10	3	2	1	2	26	115
Diseases of the Respiratory system	M	15	3	4	2	-	-	-	1	-	-	7	32
	F	9	6	5	1	2	3	1	-	1	-	6	34
External causes	M	124	22	8	3	2	1	1	-	-	-	9	170
	F	43	5	1	-	-	2	-	-	-	-	2	53
All other causes	M	23	7	-	1	-	2	2	-	1	-	22	58
	F	17	4	5	3	2	6	1	1	-	-	16	55