



Central Statistics Office
An Phríomh-Oifig Staidrimh

Vital Statistics

Third Quarter

2007

Published by the Stationery Office, Dublin, Ireland.

To be purchased from the:

Central Statistics Office, Information Section, Skehard Road, Cork,

Government Publications Sales Office, Sun Alliance House,
Molesworth Street, Dublin 2,

or through any bookseller.

Compiled by the Central Statistics Office on behalf of the Department of
Health and Children.

[No. 574]

Price €6.00

May 2008

© Government of Ireland 2008

Material compiled and presented by
Central Statistics Office.

Reproduction is authorised, except for commercial
purposes, provided the source is acknowledged.

ISBN 0-7557-7223-7

ISSN 0790-7710

Contents

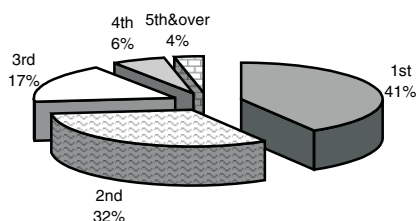
Third Quarter 2007

	Page
Commentary	4
Tables	
Table 1	Marriages, births, deaths and natural increase 8
Table 2	Annual marriage, birth, death and natural increase rates per 1,000 population 9
Table 3	Births registered, classified by area of residence of mother 10
Table 4	Births registered, classified by age of mother and previous number of liveborn children 11
Table 5	Number and percentage of births within and outside marriage, classified by age of mother 12
Table 6	Number and percentage of births registered within and outside marriage, classified by area of residence of mother 13
Table 7	Births registered, classified by area of residence and age of mother 14
Table 8	Births registered outside marriage, classified by area of residence and age of mother 15
Table 9	Deaths registered by county of residence of deceased 16
Table 10	Deaths registered by cause of death and county of residence of deceased 17
Table 11	Deaths registered classified by cause and age group 18
Table 12	Male deaths registered, classified by cause and age group 20
Table 13	Female deaths registered classified by cause and age group 22
Table 14	Infant and neonatal mortality by area of residence of deceased 24
Appendix	
	Glossary of terms 26
	Causes of death Eurostat shortlist (August 1998) 27
	Estimated population classified by sex and age group, 2002-2007 28

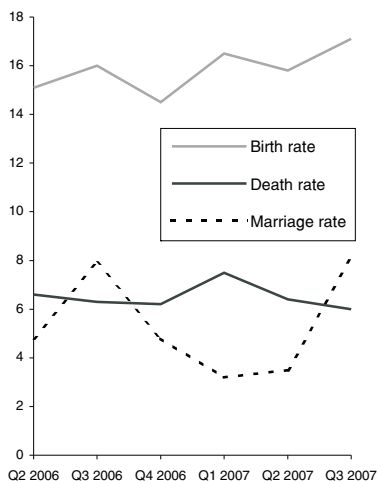
Third Quarter 2007

Commentary

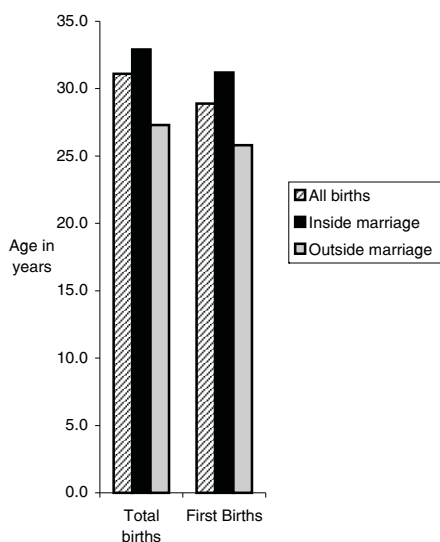
Birth Order Q3 2007



Annual birth, death and marriage rates per 1,000 population



Average age at maternity Q3 2007



Introduction

This report has been prepared by the Central Statistics Office for the Minister for Health and Children in accordance with the provisions of Section 2 of the Vital Statistics and Births, Deaths and Marriages Registration Act, 1952 and Section 73 of the Civil Registration Act 2004.

Births

There were 18,554 births registered in quarter 3 of 2007, 9,462 males and 9,092 females, an increase of 1,634 on the quarter 3 figure of 2006. The quarter 3 2007 total is 32.3% higher than in 1998 when 14,027 babies were registered.

This represents an annual birth rate of 17.1 per 1,000 of the population, 1.1 above quarter 3 of 2006. This rate is 1.9 per 1,000 population higher than in 1998.

Birth order

A total of 7,643 births (41.4%) were to first time mothers in quarter 3 of 2007. Second time mothers had 5,879 births (31.9%) (see Table 4). This compares to 5,552 (39.6%) first births registered in quarter 3 1998.

Age of mothers

The average age of mothers for births registered in quarter 3 2007 was 31.1 years, 0.1 years higher than the corresponding figure in quarter 3 2006, and 1.0 years more than in quarter 3 1998 (see Table 1). The average age of mothers having their first child in quarter 3 2007 was 28.9 years (see Table 7).

Births outside marriage

There were 6,019 births registered as outside marriage in quarter 3 of 2007. This accounted for 32.4% of all births, a decrease of 0.3% on quarter 3 2006. The highest percentage of births outside marriage occurred in Limerick City at 51%, while the lowest percentage was in Galway County at 20% (see Table 6). In quarter 3 1998, 3,901 births were registered outside marriage or 27.8% of all births.

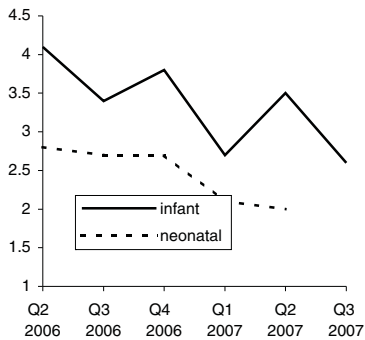
Deaths

There were 6,455 deaths registered in quarter 3 2007, 3,325 males and 3,130 females. This represents an annual death rate of 6.0 per 1,000 population.

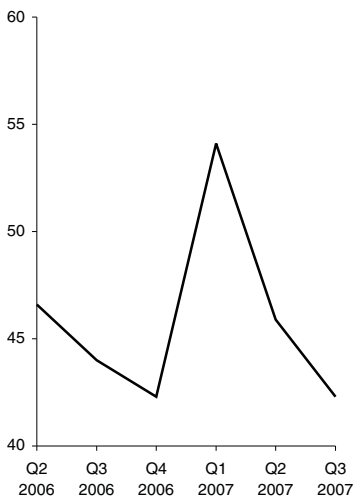
There were 48 infant deaths registered in quarter 3 2007 giving an infant mortality rate of 2.6 deaths per 1,000 live births. Neonatal deaths are deaths of infants at ages under 4 weeks. There were 32 neonatal deaths registered in quarter 3 2007, a neonatal mortality rate of 1.7 deaths per 1,000 live births.

There were 4,976 deaths of persons aged 65 and over registered in quarter 3 2007. This represents an annual death rate of 42.3 per 1,000 population aged 65 and over.

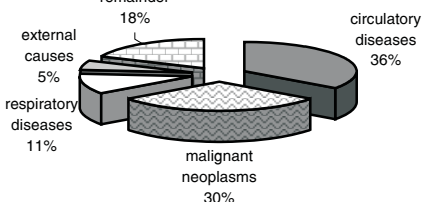
Infant and neonatal mortality rates per 1,000 live births



Death rates for ages 65 & over per 1,000 relevant population



Principal causes of death Q3 2007



Cause of death

• Diseases of the Circulatory System:

Diseases of the Circulatory System accounted for 2,259 deaths, or an annual rate of 2.1 per 1,000 population. Of these, 1,202 were due to Ischaemic Heart Disease and 483 to Cerebrovascular Disease.

• Malignant Neoplasms:

There were 1,942 deaths from malignant neoplasms. This is equivalent to an annual rate of 1.8 per 1,000 population.

• Diseases of the Respiratory System:

Deaths from pneumonia numbered 254; chronic lower respiratory disease accounted for 289 deaths and 186 deaths resulted from other respiratory diseases.

Marriages

The number of marriages registered during the quarter was 8,733 equivalent to an annual marriage rate of 8.1 per 1,000 population, 0.2 above the corresponding quarter of 2006. The quarter 3 2007 total is 16% higher than in quarter 3 1998 when 7,530 marriages were registered.

Population

The estimated population in April 2007 was 4,339,000.

Methodology

All figures in this report are classified by quarter of registration. Delay in the registration of some births, deaths and marriages result in them being included in a later period in these quarterly reports.

Changes in methodology (Deaths)

This publication continues with the 3 major changes in the methods by which mortality statistics are compiled. These changes were introduced in the Vital Statistics First Quarter 2007 publication.

- 1) Underlying Cause of Death is classified according to International Classification of Diseases, Version 10 (ICD10) instead of to International Classification of Diseases, Version 9 (ICD9).
- 2) Deaths where there was not an inquest have been coded using the automated coding system developed by the U.S National Centre for Health Statistics (NCHS). Previously the Underlying Cause of Death was chosen manually for all deaths.
- 3) All deaths registered in the Quarter have been included in the statistics, in some cases with a provisional cause of death. Previously the practice was not to include deaths in the quarterly statistics until the cause of death had been definitely established.

Because of these changes, caution should be taken in directly comparing these mortality statistics with those of previous quarters. Many countries have found that moving to ICD10 does affect certain specific categories of causes of death. In particular, a significant drop in the number of deaths attributed to pneumonia and bronchopneumonia has been observed in some countries after moving to ICD10. These deaths were instead assigned to other conditions included on the death certificate.

The effect of the third change above has been to increase the number of deaths in our statistics as compared with previous years. Statistics for deaths due to

external causes are particularly affected by this change. The previous method meant that some deaths were included in a later quarter of the year from when they had been registered, because of the delay involved in establishing a definite cause of death. Direct comparison with previous years will be possible only once all 4 quarters of 2007 have been published.

To aid comparability, we are currently completing a Bridge Coding study based on deaths registered in 2005. In this study, deaths that were previously coded in ICD9 using manual coding are being recoded independently in ICD10 using the automated system. The resulting differences in the number of deaths assigned to specific causes using the respective methods will give us a good insight into the effect of these changes on future mortality statistics. This study will be published in 2008.

Tables

Table 1 Marriages, births, deaths and natural increase

	Marriages ¹	Live Births				Deaths				Natural Increase
		Total	First	Outside marriage	Average Age	Total	Infant	Neonatal	65 & over	
Quarter 1										
1998	1,642	13,405	5,209	3,875	30.0	8,927	82	52	7,244	4,478
1999	2,064	13,388	5,491	4,275	30.0	9,867	80	61	8,104	3,521
2000	2,200	13,984	5,693	4,656	30.0	9,804	86	59	8,062	4,180
2001	2,168	14,785	5,963	4,877	30.1	8,408	81	56	6,747	6,377
2002	2,484	14,972	6,127	4,877	30.3	7,749	73	51	6,281	7,223
2003	2,571	15,238	6,158	5,080	30.3	7,756	67	52	6,259	7,482
2004	2,676	15,599	6,082	5,181	30.7	7,873	72	56	6,347	7,726
2005	2,892	15,334	6,290	5,147	30.9	7,352	65	47	5,920	7,982
2006	3,267	15,958	6,449	5,481	30.9	7,320	56	36	6,040	8,638
2007	3,399	17,473	7,207	5,905	31.1	7,910 ²	48	37 ³	6,326	9,563
Quarter 2										
1998	3,689	13,729	5,181	3,674	30.1	8,021	88	56	6,421	5,708
1999	4,577	13,585	5,299	4,053	30.2	7,777	79	55	6,155	5,808
2000	4,670	13,794	5,427	4,260	30.3	7,650	77	52	5,974	6,144
2001	4,533	14,303	5,615	4,307	30.5	7,260	74	55	5,808	7,043
2002	4,810	15,247	5,858	4,672	30.5	7,680	91	64	6,074	7,567
2003	4,827	15,582	6,095	4,689	30.6	7,203	83	59	5,625	8,379
2004	4,719	15,535	5,897	4,874	30.8	6,881	74	53	5,351	8,654
2005	5,374	15,306	5,922	4,810	31.1	7,349	70	52	5,826	7,957
2006	5,094	15,979	6,315	5,056	31.1	6,967	65	44	5,488	9,012
2007	5,536	17,127	6,901	5,428	31.2	6,902 ²	60	34	5,394	10,225
Quarter 3										
1998	7,530	14,027	5,552	3,901	30.1	7,187	72	57	5,625	6,840
1999	7,342	13,840	5,635	4,323	30.0	6,645	70	44	5,218	7,195
2000	7,593	13,967	5,641	4,451	30.2	6,832	89	54	5,372	7,135
2001	7,557	14,688	5,901	4,472	30.3	6,974	97	67	5,403	7,714
2002	7,580	15,593	6,333	4,855	30.4	6,941	68	50	5,391	8,652
2003	7,996	15,909	6,240	4,981	30.6	6,639	85	68	5,147	9,270
2004	8,168	15,605	6,171	5,100	30.8	6,473	72	43	5,123	9,132
2005	8,347	16,170	6,548	5,101	30.9	6,380	50	33	4,919	9,790
2006	8,341	16,920	6,891	5,541	31.0	6,657	58	46	5,146	10,263
2007	8,733	18,554	7,643	6,019	31.1	6,455 ²	48	32	4,976	12,099
Quarter 4										
1998	3,922	12,390	5,053	3,683	30.1	7,217	88	67	5,566	5,173
1999	4,543	12,541	5,139	3,810	30.2	7,394	64	48	5,815	5,147
2000	4,705	12,494	5,236	3,868	30.2	6,829	70	53	5,324	5,665
2001	4,988	14,106	5,915	4,393	30.3	7,170	85	57	5,422	6,936
2002	5,682	14,709	5,989	4,411	30.5	6,978	74	49	5,378	7,731
2003	4,908	14,788	5,883	4,563	30.7	7,225	76	52	5,568	7,563
2004	5,056	14,945	5,975	4,783	30.9	6,924	82	62	5,253	8,021
2005	4,742	14,232	5,861	4,470	31.1	6,360	59	45	4,827	7,872
2006	5,139	15,380	6,456	5,217	31.0	6,535	58	42	4,946	8,845
2007										
Total										
1998	16,783	53,551	20,995	15,133	30.1	31,352	330	232	24,856	22,199
1999	18,526	53,354	21,564	16,461	30.1	31,683	293	208	25,292	21,671
2000	19,168	54,239	21,997	17,235	30.2	31,115	322	218	24,732	23,124
2001	19,246	57,882	23,394	18,049	30.3	29,812	337	235	23,380	28,070
2002	20,556	60,521	24,307	18,815	30.4	29,348	306	214	23,124	31,173
2003	20,302	61,517	24,376	19,313	30.6	28,823	311	231	22,599	32,694
2004	20,619	61,684	24,125	19,938	30.8	28,151	300	214	22,074	33,533
2005	21,355	61,042	24,621	19,528	31.0	27,441	244	177	21,492	33,601
2006	21,841	64,237	26,111	21,295	31.0	27,479	237	168	21,620	36,758
2007										

¹ 2002 and 2005 marriage figures are final. All other marriage figures are subject to revision.² Not directly comparable with previous quarters. See 'Commentary' for changes in methodology.³ Revised data.

Table 2 Annual marriage, birth, death and natural increase rates per 1,000 population

	Marriages	Live Births			Deaths				Natural Increase
		Total	% First births ¹	% Outside marriage	Total	Infant Mortality ²	Neonatal Mortality ³	65 & over	
Quarter 1									
1998	1.8	14.6	39.0	28.9	9.7	6.1	3.9	69.6	4.9
1999	2.2	14.5	41.1	31.9	10.7	6.0	4.6	77.1	3.8
2000	2.4	14.9	40.9	33.3	10.5	6.1	4.2	76.4	4.5
2001	2.3	15.6	40.5	33.0	8.9	5.5	3.8	63.5	6.7
2002	2.6	15.6	41.2	32.6	8.1	4.9	3.4	58.5	7.5
2003	2.6	15.6	40.7	33.3	7.9	4.4	3.4	57.4	7.6
2004	2.7	15.7	40.4	33.2	7.9	4.6	3.6	57.3	7.8
2005	2.9	15.2	41.3	33.6	7.3	4.2	3.1	52.5	7.9
2006	3.2	15.5	41.1	34.3	7.1	3.5	2.3	52.4	8.4
2007	3.2	16.5	42.8	33.8	7.5 ⁴	2.7	2.1 ⁵	54.1	9.0
Quarter 2									
1998	4.0	14.8	37.9	26.8	8.7	6.4	4.1	61.1	6.2
1999	4.9	14.5	39.2	29.8	8.3	5.8	4.0	58.4	6.2
2000	4.9	14.6	39.5	30.9	8.1	5.6	3.8	56.3	6.5
2001	4.7	14.9	39.5	30.1	7.5	5.2	3.8	54.1	7.3
2002	4.9	15.6	38.8	30.6	7.8	6.0	4.2	55.7	7.7
2003	4.9	15.7	39.5	30.1	7.2	5.3	3.8	50.8	8.4
2004	4.7	15.4	38.8	31.4	6.8	4.8	3.4	47.5	8.6
2005	5.2	14.8	38.8	31.4	7.1	4.6	3.4	50.6	7.7
2006	4.8	15.1	41.1	31.6	6.6	4.1	2.8	46.9	8.5
2007	5.1	15.8	42.0	31.7	6.4 ⁴	3.5	2.0	45.9	9.4
Quarter 3									
1998	8.1	15.2	39.7	27.8	7.8	5.1	4.1	53.5	7.4
1999	7.8	14.8	40.9	31.2	7.1	5.1	3.2	49.5	7.7
2000	8.0	14.7	40.6	31.9	7.2	6.4	3.9	50.6	7.5
2001	7.9	15.3	40.4	30.4	7.3	6.6	4.6	50.3	8.0
2002	7.7	15.9	41.0	31.1	7.1	4.4	3.2	49.5	8.8
2003	8.0	16.0	39.6	31.3	6.7	5.3	4.3	46.5	9.3
2004	8.1	15.4	39.8	32.7	6.4	4.6	2.8	45.4	9.0
2005	8.1	15.7	40.7	31.5	6.2	3.1	2.0	42.7	9.5
2006	7.9	16.0	41.6	32.7	6.3	3.4	2.7	44.0	9.7
2007	8.1	17.1	41.2	32.4	6.0 ⁴	2.6	1.7	42.3	11.2
Quarter 4									
1998	4.2	13.4	41.0	29.7	7.8	7.1	5.4	53.0	5.6
1999	4.9	13.4	41.1	30.4	7.9	5.1	3.8	55.1	5.5
2000	5.0	13.2	42.1	31.0	7.2	5.6	4.2	50.1	6.0
2001	5.2	14.7	42.2	31.1	7.5	6.0	4.0	50.5	7.2
2002	5.8	15.0	41.2	30.0	7.1	5.0	3.3	49.3	7.9
2003	4.9	14.9	40.9	30.9	7.3	5.1	3.5	50.3	7.6
2004	5.0	14.8	40.3	32.0	6.8	5.5	4.1	46.6	7.9
2005	4.6	13.8	41.4	31.4	6.2	4.1	3.2	41.9	7.6
2006	4.8	14.5	42.3	33.9	6.2	3.8	2.7	42.3	8.3
2007									
Total									
1998	4.5	14.5	39.4	28.3	8.5	6.2	4.3	59.2	6.0
1999	5.0	14.3	40.6	30.9	8.5	5.5	3.9	59.9	5.8
2000	5.1	14.3	40.8	31.8	8.2	5.9	4.0	58.2	6.1
2001	5.0	15.0	40.7	31.2	7.7	5.8	4.1	54.4	7.3
2002	5.2	15.5	40.5	31.1	7.5	5.1	3.5	53.0	8.0
2003	5.1	15.5	40.2	31.4	7.2	5.1	3.8	51.0	8.2
2004	5.1	15.3	39.8	32.3	7.0	4.9	3.5	49.0	8.3
2005	5.2	14.8	40.5	32.0	6.6	4.0	2.9	46.7	8.1
2006	5.2	15.2	41.5	33.2	6.5	3.7	2.6	46.2	8.7
2007									

¹ First births divided by the total number of live births (excluding those with unstated parity), multiplied by 100.² Infant mortality is the number of infant deaths per 1,000 live births.³ Neonatal mortality is the number of neonatal (infants aged under 4 weeks) deaths per 1,000 live births.⁴ Not directly comparable with previous quarters. See 'Commentary' for changes in methodology.⁵ Revised data.

Table 3 Births registered, classified by area of residence of mother

	Total	Male	Female	Rate ^(a)
STATE	18,554	9,462	9,092	17.1
LEINSTER	10,610	5,460	5,150	18.1
Carlow	293	155	138	22.7
Dublin City	1,882	964	918	14.5
South Dublin	1,253	631	622	19.8
Fingal	1,419	721	698	23.1
Dun Laoghaire Rathdown	691	328	363	13.9
Kildare	1,030	539	491	21.6
Kilkenny	339	188	151	15.1
Laois	329	176	153	19.2
Longford	161	81	80	18.3
Louth	414	204	210	14.5
Meath	889	454	435	21.3
Offaly	318	176	142	17.5
Westmeath	357	198	159	17.6
Wexford	606	315	291	18.0
Wicklow	629	330	299	19.5
MUNSTER	4,896	2,441	2,455	16.3
Clare	488	236	252	17.2
Cork City	323	165	158	10.6
Cork County	1,743	869	874	18.8
Kerry	516	253	263	14.4
Limerick City	212	102	110	15.8
Limerick County	559	279	280	16.6
North Tipperary	335	168	167	19.8
South Tipperary	286	146	140	13.4
Waterford City	186	97	89	15.9
Waterford County	248	126	122	15.6
CONNACHT	2,044	1,032	1,012	15.8
Galway City	243	128	115	13.1
Galway County	772	376	396	18.9
Leitrim	109	68	41	14.7
Mayo	502	263	239	15.8
Roscommon	186	80	106	12.4
Sligo	232	117	115	14.9
ULSTER (PART OF)	1,004	529	475	14.7
Cavan	278	143	135	17.0
Donegal	523	272	251	13.9
Monaghan	203	114	89	14.2
REGIONAL AUTHORITIES:				
Border	1,759	918	841	14.6
Midland	1,165	631	534	17.9
West	1,703	847	856	16.2
Dublin	5,245	2,644	2,601	17.3
Mid-East	2,548	1,323	1,225	20.5
Mid-West	1,594	785	809	17.5
South-East	1,958	1,027	931	16.5
South-West	2,582	1,287	1,295	16.3

(a) Births per year per 1,000 population. Annual rates based on estimated 2007 population.

Table 4 Births registered, classified by age of mother and previous number of liveborn children

Age of mother at maternity	Previous number of liveborn children							
	Total	0	1	2	3	4	5 or more	Not stated ^(a)
All ages	18,554	7,643	5,879	3,180	1,146	363	238	105
15 and under	18	17	-	-	-	-	-	1
16	40	40	-	-	-	-	-	-
17	98	91	6	1	-	-	-	-
18	178	163	12	2	-	-	-	1
19	268	226	37	3	1	-	-	1
Under 20	602	537	55	6	1	-	-	3
20	366	278	81	7	-	-	-	-
21	417	301	92	20	3	1	-	-
22	454	291	114	38	8	1	-	2
23	496	288	146	53	3	2	-	4
24	578	339	157	54	19	5	1	3
20-24	2,311	1,497	590	172	33	9	1	9
25	681	367	203	80	23	4	-	4
26	780	424	229	82	28	8	2	7
27	886	441	267	126	30	12	3	7
28	971	447	319	137	44	11	5	8
29	1,072	481	391	127	44	8	13	8
25-29	4,390	2,160	1,409	552	169	43	23	34
30	1,196	515	423	179	42	19	12	6
31	1,258	535	431	176	71	25	17	3
32	1,368	542	472	235	72	24	19	4
33	1,250	410	471	239	92	19	14	5
34	1,374	389	514	312	93	37	23	6
30-34	6,446	2,391	2,311	1,141	370	124	85	24
35	1,192	307	421	306	100	34	17	7
36	961	233	325	256	98	24	16	9
37	809	173	246	233	103	27	21	6
38	624	108	185	191	90	29	15	6
39	452	75	131	135	75	20	12	4
35-39	4,038	896	1,308	1,121	466	134	81	32
40	314	50	88	93	44	22	15	2
41	201	50	55	51	22	10	12	1
42	114	29	32	22	16	7	8	-
43	62	12	21	9	11	5	4	-
44	38	11	5	8	7	4	3	-
40-44	729	152	201	183	100	48	42	3
45 and over	33	9	4	4	5	5	6	-
Age not stated	5	1	1	1	2	-	-	-

^(a) Figures in this column are artificially high because of a temporary issue with the data. More complete information on number of previous children will be available in the 2007 Annual Summary

Table 5 Number and percentage of births registered within and outside marriage, classified by age of mother

Age of mother at maternity	Total	Married parents	Unmarried Parents		% to married parents	% to unmarried parents	
			Total	Same address		Total	Same address
	Number				Percentage		
All ages	18,554	12,535	6,019	3,161	68	32	17
15 and under	18	-	18	4	-	100	22
16	40	1	39	1	3	97	3
17	98	5	93	14	5	95	14
18	178	15	163	23	8	92	13
19	268	40	228	52	15	85	19
Under 20	602	61	541	94	10	90	16
20	366	55	311	96	15	85	26
21	417	86	331	116	21	79	28
22	454	107	347	141	24	76	31
23	496	115	381	194	23	77	39
24	578	188	390	209	33	67	36
20-24	2,311	551	1,760	756	24	76	33
25	681	261	420	233	38	62	34
26	780	371	409	236	48	52	30
27	886	478	408	257	54	46	29
28	971	614	357	215	63	37	22
29	1,072	767	305	200	72	28	19
25-29	4,390	2,491	1,899	1,141	57	43	26
30	1,196	943	253	159	79	21	13
31	1,258	978	280	184	78	22	15
32	1,368	1,131	237	161	83	17	12
33	1,250	1,075	175	110	86	14	9
34	1,374	1,185	189	124	86	14	9
30-34	6,446	5,312	1,134	738	82	18	11
35	1,192	1,033	159	108	87	13	9
36	961	841	120	70	88	12	7
37	809	693	116	69	86	14	9
38	624	531	93	62	85	15	10
39	452	378	74	44	84	16	10
35-39	4,038	3,476	562	353	86	14	9
40	314	271	43	25	86	14	8
41	201	169	32	24	84	16	12
42	114	97	17	11	85	15	10
43	62	47	15	7	76	24	11
44	38	32	6	4	84	16	11
40-44	729	616	113	71	84	16	10
45 and over	33	26	7	6	79	21	18
Age not stated	5	2	3	2	40	60	40

Table 6 Number and percentage of births registered within and outside marriage, classified by area of residence of mother

Area of residence	Total	Married parents	Unmarried Parents		% to married parents	% to unmarried parents	
			Total	Same address		Total	Same address
	Number				Percentage		
STATE	18,554	12,535	6,019	3,161	68	32	17
LEINSTER	10,610	6,884	3,726	1,929	65	35	18
Carlow	293	191	102	60	65	35	20
Dublin City	1,882	999	883	352	53	47	19
South Dublin	1,253	772	481	223	62	38	18
Fingal	1,419	959	460	259	68	32	18
Dun Laoghaire Rathdown	691	519	172	93	75	25	13
Kildare	1,030	745	285	146	72	28	14
Kilkenny	339	237	102	59	70	30	17
Laois	329	224	105	71	68	32	22
Longford	161	103	58	34	64	36	21
Louth	414	235	179	91	57	43	22
Meath	889	641	248	164	72	28	18
Offaly	318	213	105	59	67	33	19
Westmeath	357	249	108	63	70	30	18
Wexford	606	372	234	131	61	39	22
Wicklow	629	425	204	124	68	32	20
MUNSTER	4,896	3,455	1,441	764	71	29	16
Clare	488	367	121	68	75	25	14
Cork City	323	169	154	49	52	48	15
Cork County	1,743	1,339	404	244	77	23	14
Kerry	516	368	148	88	71	29	17
Limerick City	212	104	108	41	49	51	19
Limerick County	559	423	136	70	76	24	13
North Tipperary	335	241	94	61	72	28	18
South Tipperary	286	176	110	54	62	38	19
Waterford City	186	104	82	41	56	44	22
Waterford County	248	164	84	48	66	34	19
CONNACHT	2,044	1,510	534	312	74	26	15
Galway City	243	156	87	38	64	36	16
Galway County	772	619	153	102	80	20	13
Leitrim	109	86	23	18	79	21	17
Mayo	502	356	146	77	71	29	15
Roscommon	186	136	50	33	73	27	18
Sligo	232	157	75	44	68	32	19
ULSTER (PART OF)	1,004	686	318	156	68	32	16
Cavan	278	191	87	56	69	31	20
Donegal	523	355	168	70	68	32	13
Monaghan	203	140	63	30	69	31	15
REGIONAL AUTHORITIES:							
Border	1,759	1,164	595	309	66	34	18
Midland	1,165	789	376	227	68	32	19
West	1,703	1,267	436	250	74	26	15
Dublin	5,245	3,249	1,996	927	62	38	18
Mid-East	2,548	1,811	737	434	71	29	17
Mid-West	1,594	1,135	459	240	71	29	15
South-East	1,958	1,244	714	393	64	36	20
South-West	2,582	1,876	706	381	73	27	15

Table 7 Births registered, classified by area of residence and age of mother

Area of residence	Total	Under 20	20-24	25-29	30-34	35-39	40 and over	Age not stated	Average age of mother at maternity	
									Total	First
STATE	18,554	602	2,311	4,390	6,446	4,038	762	5	31.1	28.9
LEINSTER	10,610	353	1,362	2,624	3,659	2,190	418	4	30.9	28.8
Carlow	293	8	43	88	96	46	12	-	30.3	28.1
Dublin City	1,882	83	328	456	551	382	82	-	30.3	28.4
South Dublin	1,253	45	183	337	407	248	32	1	30.4	28.2
Fingal	1,419	31	176	365	549	257	41	-	30.8	29.2
Dun Laoghaire Rathdown	691	14	44	101	260	208	63	1	33.3	31.3
Kildare	1,030	38	109	229	397	215	42	-	31.3	28.8
Kilkenny	339	13	34	76	138	66	12	-	31.2	28.9
Laois	329	8	45	87	114	65	9	1	30.7	28.6
Longford	161	6	29	38	48	30	10	-	30.6	28.0
Louth	414	23	59	123	123	70	16	-	30.0	28.0
Meath	889	17	94	216	328	203	31	-	31.4	29.5
Offaly	318	12	53	87	97	59	10	-	30.1	28.5
Westmeath	357	10	36	105	121	63	21	1	31.1	28.9
Wexford	606	29	75	175	199	107	21	-	30.3	27.8
Wicklow	629	16	54	141	231	171	16	-	31.6	29.6
MUNSTER	4,896	137	572	1,068	1,771	1,136	211	1	31.4	29.1
Clare	488	10	46	86	174	149	23	-	32.3	29.9
Cork City	323	14	74	84	80	54	17	-	29.6	27.4
Cork County	1,743	23	142	383	705	414	75	1	32.0	30.1
Kerry	516	16	70	103	186	114	27	-	31.3	28.8
Limerick City	212	19	37	60	54	37	5	-	29.2	26.8
Limerick County	559	14	63	102	224	133	23	-	31.7	29.5
North Tipperary	335	7	35	87	102	85	19	-	31.7	29.5
South Tipperary	286	14	39	63	105	58	7	-	30.7	28.0
Waterford City	186	14	40	44	49	34	5	-	29.2	25.7
Waterford County	248	6	26	56	92	58	10	-	31.5	28.9
CONNACHT	2,044	62	235	433	702	518	94	-	31.6	29.0
Galway City	243	14	46	56	66	53	8	-	30.0	27.5
Galway County	772	16	75	146	267	225	43	-	32.2	29.6
Leitrim	109	5	7	25	40	25	7	-	32.0	29.6
Mayo	502	18	63	114	171	113	23	-	31.3	28.6
Roscommon	186	2	19	46	59	50	10	-	31.9	29.2
Sligo	232	7	25	46	99	52	3	-	31.3	29.3
ULSTER (PART OF)	1,004	50	142	265	314	194	39	-	30.4	27.4
Cavan	278	10	43	70	84	58	13	-	30.7	27.7
Donegal	523	28	70	131	166	109	19	-	30.6	27.6
Monaghan	203	12	29	64	64	27	7	-	29.6	26.7
REGIONAL AUTHORITIES:										
Border	1,759	85	233	459	576	341	65	-	30.5	28.0
Midland	1,165	36	163	317	380	217	50	2	30.7	28.6
West	1,703	50	203	362	563	441	84	-	31.6	28.9
Dublin	5,245	173	731	1,259	1,767	1,095	218	2	30.9	28.9
Mid-East	2,548	71	257	586	956	589	89	-	31.4	29.2
Mid-West	1,594	50	181	335	554	404	70	-	31.6	29.2
South-East	1,958	84	257	502	679	369	67	-	30.6	28.0
South-West	2,582	53	286	570	971	582	119	1	31.5	29.4

Table 8 Births registered outside marriage, classified by area of residence and age of mother

Area of residence	Total	Under 25	25-29	30-34	35-39	40 and over	Age not stated	Average age of mother at maternity	
								Total	First
STATE	6,019	2,301	1,899	1,134	562	120	3	27.3	25.8
LEINSTER	3,726	1,390	1,196	708	351	78	3	27.4	25.9
Carlow	102	40	38	15	7	2	-	26.9	26.0
Dublin City	883	342	267	157	99	18	-	27.5	26.1
South Dublin	481	181	168	87	36	8	1	27.1	25.5
Fingal	460	149	152	105	48	6	-	28.0	26.9
Dun Laoghaire Rathdown	172	49	46	32	29	16	-	29.8	27.7
Kildare	285	117	83	59	20	6	-	26.8	25.3
Kilkenny	102	39	33	24	6	-	-	26.7	25.5
Laois	105	42	31	22	9	-	1	26.8	25.2
Longford	58	27	12	13	5	1	-	26.9	25.5
Louth	179	71	64	27	11	6	-	26.8	25.0
Meath	248	93	87	49	14	5	-	27.2	26.0
Offaly	105	53	30	14	7	1	-	26.0	25.2
Westmeath	108	35	36	22	12	2	1	27.9	25.5
Wexford	234	88	77	47	18	4	-	27.0	25.5
Wicklow	204	64	72	35	30	3	-	27.9	26.5
MUNSTER	1,441	566	439	275	134	27	-	27.3	25.7
Clare	121	44	31	25	16	5	-	28.2	26.8
Cork City	154	71	48	20	11	4	-	26.7	25.1
Cork County	404	130	146	82	37	9	-	27.8	26.4
Kerry	148	64	43	26	13	2	-	26.8	25.7
Limerick City	108	47	30	20	11	-	-	26.6	24.6
Limerick County	136	58	37	29	10	2	-	27.1	25.1
North Tipperary	94	35	30	18	10	1	-	27.7	25.6
South Tipperary	110	47	31	20	10	2	-	26.9	24.6
Waterford City	82	42	18	12	9	1	-	26.3	23.8
Waterford County	84	28	25	23	7	1	-	27.8	26.5
CONNACHT	534	193	177	104	49	11	-	27.5	25.9
Galway City	87	40	24	20	3	-	-	26.1	24.9
Galway County	153	52	50	30	18	3	-	27.8	25.7
Leitrim	23	6	11	3	2	1	-	28.4	27.2
Mayo	146	56	44	25	16	5	-	27.6	26.1
Roscommon	50	14	20	12	3	1	-	27.8	25.9
Sligo	75	25	28	14	7	1	-	27.7	26.8
ULSTER (PART OF)	318	152	87	47	28	4	-	26.2	24.5
Cavan	87	43	21	10	12	1	-	26.4	25.1
Donegal	168	75	48	30	12	3	-	26.5	24.8
Monaghan	63	34	18	7	4	-	-	24.9	22.7
REGIONAL AUTHORITIES:									
Border	595	254	190	91	48	12	-	26.6	25.0
Midland	376	157	109	71	33	4	2	26.9	25.3
West	436	162	138	87	40	9	-	27.4	25.7
Dublin	1,996	721	633	381	212	48	1	27.7	26.3
Mid-East	737	274	242	143	64	14	-	27.2	25.8
Mid-West	459	184	128	92	47	8	-	27.4	25.6
South-East	714	284	222	141	57	10	-	26.9	25.4
South-West	706	265	237	128	61	15	-	27.3	26.0

Table 9 Deaths registered by county of residence of deceased

Area of residence	Total	Male	Female	Rate ^(a)
STATE	6,455	3,325	3,130	6.0
LEINSTER	3,154	1,580	1,574	5.4
Carlow	70	34	36	5.4
Dublin City	970	471	499	7.5
South Dublin	186	101	85	2.9
Fingal	201	104	97	3.3
Dun Laoghaire Rathdown	291	130	161	5.9
Kildare	205	110	95	4.3
Kilkenny	124	69	55	5.5
Laois	83	44	39	4.8
Longford	71	35	36	8.1
Louth	166	86	80	5.8
Meath	178	89	89	4.3
Offaly	104	49	55	5.7
Westmeath	102	55	47	5.0
Wexford	209	115	94	6.2
Wicklow	194	88	106	6.0
MUNSTER	2,002	1,078	924	6.7
Clare	153	78	75	5.4
Cork City	273	152	121	8.9
Cork County	503	245	258	5.4
Kerry	264	146	118	7.4
Limerick City	107	57	50	8.0
Limerick County	204	115	89	6.1
North Tipperary	150	91	59	8.9
South Tipperary	160	105	55	7.5
Waterford City	73	37	36	6.2
Waterford County	115	52	63	7.2
CONNACHT	855	446	409	6.6
Galway City	55	24	31	3.0
Galway County	261	129	132	6.4
Leitrim	68	29	39	9.2
Mayo	276	153	123	8.7
Roscommon	104	67	37	6.9
Sligo	91	44	47	5.8
ULSTER (PART OF)	444	221	223	6.5
Cavan	113	61	52	6.9
Donegal	230	117	113	6.1
Monaghan	101	43	58	7.0
REGIONAL AUTHORITIES:				
Border	769	380	389	6.4
Midland	360	183	177	5.5
West	696	373	323	6.6
Dublin	1,648	806	842	5.4
Mid-East	577	287	290	4.6
Mid-West	614	341	273	6.7
South-East	751	412	339	6.3
South-West	1,040	543	497	6.6

^(a) Deaths per year per 1,000 population. Annual rates based on estimated 2007 population.

Table 10 Deaths registered by cause of death and county of residence of deceased

Area of residence	Total deaths	Malignant Neoplasms	Diseases of the Circulatory system	Diseases of the Respiratory system	External causes	All other causes
STATE	6,455	1,942	2,259	729	334	1,191
LEINSTER	3,154	951	1,072	351	175	605
Carlow	70	18	26	10	1	15
Dublin City	970	291	330	105	71	173
South Dublin	186	58	66	20	10	32
Fingal	201	64	66	24	11	36
Dun Laoghaire Rathdown	291	86	83	34	10	78
Kildare	205	52	77	16	11	49
Kilkenny	124	32	47	14	4	27
Laois	83	21	31	10	7	14
Longford	71	29	16	12	1	13
Louth	166	51	64	20	8	23
Meath	178	69	52	21	6	30
Offaly	104	46	29	12	4	13
Westmeath	102	24	39	6	8	25
Wexford	209	57	75	21	18	38
Wicklow	194	53	71	26	5	39
MUNSTER	2,002	609	730	217	94	352
Clare	153	45	66	19	1	22
Cork City	273	84	87	36	15	51
Cork County	503	153	173	48	35	94
Kerry	264	81	101	25	9	48
Limerick City	107	31	37	10	5	24
Limerick County	204	65	82	26	5	26
North Tipperary	150	36	72	11	6	25
South Tipperary	160	51	50	20	9	30
Waterford City	73	24	24	7	3	15
Waterford County	115	39	38	15	6	17
CONNACHT	855	250	307	111	39	148
Galway City	55	11	23	13	0	8
Galway County	261	84	86	34	13	44
Leitrim	68	16	30	8	1	13
Mayo	276	82	98	30	19	47
Roscommon	104	30	38	17	4	15
Sligo	91	27	32	9	2	21
ULSTER (PART OF)	444	132	150	50	26	86
Cavan	113	36	33	15	8	21
Donegal	230	72	83	19	15	41
Monaghan	101	24	34	16	3	24
REGIONAL AUTHORITIES:						
Border	769	226	276	87	37	143
Midland	360	120	115	40	20	65
West	696	207	245	94	36	114
Dublin	1,648	499	545	183	102	319
Mid-East	577	174	200	63	22	118
Mid-West	614	177	257	66	17	97
South-East	751	221	260	87	41	142
South-West	1,040	318	361	109	59	193

Table 11 Deaths registered classified by cause and age group

Cause of Death	65 COD Code	ICD-10 Code	Total Deaths	Age Group										
				Under 1	1-4	5-14	15-24	25-34	35-44	45-54	55-64	65-74	75-84	85 and over
Total deaths	0	A00-Y89	6,455	48	14	12	67	102	157	349	730	1,196	2,004	1,776
Infectious and parasitic diseases:-	1	A00-B99	45	-	-	-	1	2	2	2	4	6	15	13
Tuberculosis	2	A15-A19,B90	7	-	-	-	-	-	-	2	-	-	3	2
Meningococcal infection	3	A39	2	-	-	-	1	-	-	-	-	-	1	-
AIDS (HIV Disease)	4	B20-B24	1	-	-	-	-	1	-	-	-	-	-	-
Viral Hepatitis	5	B15-B19	4	-	-	-	-	1	1	-	1	-	1	-
Other infectious and parasitic diseases			31	-	-	-	-	-	1	-	3	6	10	11
Neoplasms	6	C00-D48	1,977	1	2	2	5	13	61	141	352	522	608	270
Malignant Neoplasms of the:-	7	C00-C97	1,942	1	1	2	5	13	60	139	350	517	595	259
Lip, oral cavity, pharynx	8	C00-C14	36	-	-	-	-	-	-	3	11	16	4	2
Oesophagus	9	C15	78	-	-	-	-	-	6	6	11	23	22	10
Stomach	10	C16	79	-	-	-	-	2	3	4	16	21	27	6
Colon	11	C18	130	-	-	-	-	-	1	6	22	42	35	24
Rectum and anus	12	C19-C21	92	-	-	-	-	2	2	7	10	27	32	12
Liver and the intrahepatic bile ducts	13	C22	49	-	-	-	-	-	1	3	9	12	13	11
Pancreas	14	C25	111	-	-	-	-	-	1	10	19	29	36	16
Larynx and trachea/bronchus /lung	15	C32-C34	401	-	-	-	-	1	2	28	97	126	116	31
Skin	16	C43	24	-	-	-	-	1	2	5	5	1	8	2
Breast	17	C50	162	-	-	-	-	2	14	26	34	31	33	22
Cervix uteri	18	C53	11	-	-	-	-	-	1	5	3	1	-	1
Other parts of uterus	19	C54-C55	21	-	-	-	-	-	-	2	7	5	5	2
Ovary	20	C56	64	-	-	-	-	1	2	5	14	23	16	3
Prostate	21	C61	137	-	-	-	-	-	-	1	8	31	63	34
Kidney	22	C64	44	-	-	-	-	-	2	4	7	12	13	6
Bladder	23	C67	37	-	-	-	-	-	3	3	3	9	14	5
Lymph/haematopoietic tissue	24	C81-C96	153	1	-	1	-	-	5	5	26	34	60	21
Other malignant neoplasms			313	-	1	1	5	4	15	16	48	74	98	51
Diseases of the blood and blood-forming organs, immunological disorders	25	D50-D89	21	-	-	-	-	-	-	1	3	5	2	10
Endocrine, Nutritional and metabolic diseases	26	E00-E90	172	1	2	2	1	4	2	7	12	28	58	55
Diabetes mellitus	27	E10-E14	124	-	-	-	-	-	2	4	9	21	44	44
Mental and behavioural disorders	28	F00-F99	114	-	-	-	2	-	2	1	6	4	34	65
Alcohol abuse (including alcoholic psychosis)	29	F10	10	-	-	-	-	-	1	1	5	1	1	1
Drug dependence, toxicomania	30	F11-F16,F18-F19	3	-	-	-	2	-	1	-	-	-	-	-
Diseases of the nervous system and the sense organs	31	G00-H95	200	2	3	-	3	3	3	14	23	25	69	55
Meningitis	32	G00-G03	6	-	2	-	-	-	-	1	1	2	-	-
Diseases of the Circulatory System:-	33	I00-I99	2,259	-	-	-	5	13	19	86	194	385	752	805
Ischaemic heart disease	34	I20-I25	1,202	-	-	-	-	3	7	45	128	233	399	387
of which: (Acute myocardial infarction)		I21	616	-	-	-	-	2	3	18	54	115	227	197
Other heart disease	35	I30-I33,I39-I52	287	-	-	-	4	4	5	12	23	41	98	100
Cerebrovascular disease	36	I60-I69	483	-	-	-	1	3	2	20	24	58	161	214
Other diseases of circulatory system			287	-	-	-	-	3	5	9	19	53	94	104

Diseases of the Respiratory system	37	J00-J99	729	-	-	1	-	1	2	10	35	106	269	305
Influenza	38	J10-J11	1	-	-	1	-	-	-	-	-	-	-	-
Pneumonia	39	J12-J19	254	-	-	-	-	1	6	9	22	72	143	
Chronic Lower respiratory disease	40	J40-J47	289	-	-	-	-	-	-	1	20	54	128	86
<i>of which: Asthma</i>	41	J45-J46	10	-	-	-	-	-	1	1	2	5	1	
Other diseases of the respiratory system			185	-	-	-	-	-	1	3	6	30	69	76
Diseases of the Digestive system	42	K00-K93	287	-	1	-	-	2	10	32	43	51	84	64
Ulcer of stomach, duodenum and jejunum	43	K25-K28	21	-	-	-	-	-	1	3	6	5	6	
Chronic liver disease	44	K70,K73-K74	77	-	-	-	-	1	6	16	20	20	10	4
Other diseases of the digestive system			189	-	1	-	-	1	4	15	20	25	69	54
Diseases of the skin and subcutaneous tissue	45	L00-L99	13	-	-	-	-	-	-	-	-	1	7	5
Diseases of the musculoskeletal system/connective tissue	46	M00-M99	48	-	-	-	-	2	1	2	4	7	17	15
Rheumatoid arthritis and osteoarthritis	47	M05-M06,M15-M19	22	-	-	-	-	-	-	1	4	4	9	4
Diseases of the genitourinary system	48	N00-N99	160	-	-	-	-	1	-	-	6	19	51	83
Diseases of the kidney and ureter	49	N00-N29	107	-	-	-	-	1	-	-	5	15	30	56
Complications of pregnancy, childbirth and puerperium	50	O00-O99	-	-	-	-	-	-	-	-	-	-	-	-
Certain conditions originating in the perinatal period¹	51	P00-P96	17	16	1	-	-	-	-	-	-	-	-	-
Congenital malformations and chromosomal abnormalities	52	Q00-Q99	57	25	1	5	5	7	-	3	5	2	4	-
Congenital malformations of the:-														
Nervous system	53	Q00-Q07	11	5	-	1	2	2	-	-	1	-	-	-
Circulatory system	54	Q20-Q28	16	7	-	1	3	3	-	-	-	1	1	-
Symptoms, signs, abnormal findings, ill-defined causes	55	R00-R99	22	3	1	-	-	2	4	1	4	-	3	4
Sudden infant death syndrome	56	R95	4	3	1	-	-	-	-	-	-	-	-	-
Unknown and unspecified causes	57	R96-R99	6	-	-	-	-	1	3	1	1	-	-	-
External causes of injury and poisoning	58	V01-Y89	334	-	3	2	45	52	51	49	39	35	31	27
Accidents	59	V01-X59	197	-	3	1	28	25	20	24	20	25	26	25
<i>of which: Transport accidents</i>	60	V01-V99	58	-	2	1	19	10	3	6	7	4	6	-
<i>Accidental falls</i>	61	W00-W19	44	-	1	-	-	1	5	2	13	9	12	
<i>Accidental poisoning</i>	62	X40-X49	48	-	-	-	8	12	10	5	3	-	-	
<i>other accidents</i>			47	-	-	-	1	2	6	3	6	5	11	13
Suicide and intentional self harm	63	X60-X84	88	-	-	1	13	15	23	18	12	4	2	-
Homicide/assault	64	X85-Y09	7	-	-	-	2	3	-	-	1	1	-	-
Events of undetermined intent	65	Y10-Y34	33	-	-	-	2	9	7	5	5	5	-	-
All other external causes			9	-	-	-	-	-	1	2	1	-	3	2

¹ Stillbirths not included.

Table 12 Male deaths registered classified by cause and age group

Cause of Death	65 COD Code	ICD-10 Code	Total Males	Age Group										
				Under 1	1-4	5-14	15-24	25-34	35-44	45-54	55-64	65-74	75-84	85 and over
Total Male Deaths	0	A00-Y89	3,325	32	7	7	52	73	101	222	458	725	1,035	613
Infectious and parasitic diseases:-	1	A00-B99	26	-	-	-	1	-	2	2	4	3	7	7
Tuberculosis	2	A15-A19,B90	6	-	-	-	-	-	-	2	-	-	2	2
Meningococcal infection	3	A39	1	-	-	-	1	-	-	-	-	-	-	-
AIDS (HIV Disease)	4	B20-B24	-	-	-	-	-	-	-	-	-	-	-	-
Viral Hepatitis	5	B15-B19	3	-	-	-	-	-	1	-	1	-	1	-
Other infectious and parasitic diseases			16	-	-	-	-	-	1	-	3	3	4	5
Neoplasms	6	C00-D48	1,053	1	1	2	2	5	26	70	193	297	332	124
Malignant Neoplasms of the:-	7	C00-C97	1,034	1	1	2	2	5	25	68	192	294	325	119
Lip, oral cavity, pharynx	8	C00-C14	27	-	-	-	-	-	-	2	10	12	3	-
Oesophagus	9	C15	52	-	-	-	-	-	5	5	10	14	16	2
Stomach	10	C16	49	-	-	-	-	1	-	1	13	12	17	5
Colon	11	C18	76	-	-	-	-	-	1	5	13	27	19	11
Rectum and anus	12	C19-C21	53	-	-	-	-	1	-	1	5	15	23	8
Liver and the intrahepatic bile ducts	13	C22	25	-	-	-	-	-	1	3	6	7	5	3
Pancreas	14	C25	57	-	-	-	-	-	1	8	12	18	12	6
Larynx and trachea/bronchus /lung	15	C32-C34	257	-	-	-	-	1	1	15	66	89	69	16
Skin	16	C43	14	-	-	-	-	1	2	3	3	-	4	1
Breast	17	C50	3	-	-	-	-	-	-	1	1	-	1	-
Cervix uteri	18	C53	-	-	-	-	-	-	-	-	-	-	-	-
Other parts of uterus	19	C54-C55	-	-	-	-	-	-	-	-	-	-	-	-
Ovary	20	C56	-	-	-	-	-	-	-	-	-	-	-	-
Prostate	21	C61	137	-	-	-	-	-	-	1	8	31	63	34
Kidney	22	C64	24	-	-	-	-	-	1	3	3	6	9	2
Bladder	23	C67	24	-	-	-	-	-	2	3	2	5	8	4
Lymph/haematopoietic tissue	24	C81-C96	93	1	-	1	-	-	2	4	15	22	37	11
Other malignant neoplasms			143	-	1	1	2	1	9	13	25	36	39	16
Diseases of the blood and blood-forming organs, immunological disorders	25	D50-D89	8	-	-	-	-	-	-	1	2	2	-	3
Endocrine, Nutritional and metabolic diseases	26	E00-E90	79	-	2	-	1	1	1	5	9	15	26	19
Diabetes mellitus	27	E10-E14	58	-	-	-	-	-	1	2	7	9	22	17
Mental and behavioural disorders	28	F00-F99	39	-	-	-	1	-	2	1	2	3	17	13
Alcohol abuse (including alcoholic psychosis)	29	F10	6	-	-	-	-	-	1	1	2	-	1	1
Drug dependence, toxicomania	30	F11-F16,F18-F19	2	-	-	-	1	-	1	-	-	-	-	-
Diseases of the nervous system and the sense organs	31	G00-H95	90	2	3	-	2	2	2	9	13	14	33	10
Meningitis	32	G00-G03	6	-	2	-	-	-	-	1	1	2	-	-
Diseases of the Circulatory System:-	33	I00-I99	1,124	-	-	-	3	7	15	63	144	259	374	259
Ischaemic heart disease	34	I20-I25	658	-	-	-	-	2	7	35	103	167	215	129
of which: (Acute myocardial infarction)		I21	346	-	-	-	-	2	3	15	44	89	124	69
Other heart disease	35	I30-I33,I39-I52	144	-	-	-	2	3	5	9	18	27	50	30
Cerebrovascular disease	36	I60-I69	194	-	-	-	1	-	1	11	11	36	67	67
Other diseases of circulatory system			128	-	-	-	-	2	2	8	12	29	42	33

Diseases of the Respiratory system	37	J00-J99	353	-	-	1	-	1	1	8	21	60	147	114
Influenza	38	J10-J11	1	-	-	1	-	-	-	-	-	-	-	-
Pneumonia	39	J12-J19	95	-	-	-	-	1	1	4	5	10	31	43
Chronic Lower respiratory disease	40	J40-J47	159	-	-	-	-	-	-	1	12	32	74	40
of which: Asthma	41	J45-J46	4	-	-	-	-	-	-	1	1	1	-	1
Other diseases of the respiratory system			98	-	-	-	-	-	-	3	4	18	42	31
Diseases of the Digestive system	42	K00-K93	155	-	-	-	-	2	6	22	31	31	40	23
Ulcer of stomach, duodenum and jejunum	43	K25-K28	11	-	-	-	-	-	-	1	1	5	3	1
Chronic liver disease	44	K70,K73-K74	52	-	-	-	-	1	4	11	15	12	7	2
Other diseases of the digestive system			92	-	-	-	-	1	2	10	15	14	30	20
Diseases of the skin and subcutaneous tissue	45	L00-L99	6	-	-	-	-	-	-	-	-	-	5	1
Diseases of the musculoskeletal system/connective tissue	46	M00-M99	17	-	-	-	-	1	-	1	2	2	8	3
Rheumatoid arthritis and osteoarthritis	47	M05-M06,M15-M19	8	-	-	-	-	-	-	1	2	1	3	1
Diseases of the genitourinary system	48	N00-N99	69	-	-	-	-	1	-	-	3	12	26	27
Diseases of the kidney and ureter	49	N00-N29	47	-	-	-	-	1	-	-	3	10	15	18
Complications of pregnancy, childbirth and puerperium	50	O00-O99	-	-	-	-	-	-	-	-	-	-	-	-
Certain conditions originating in the perinatal period¹	51	P00-P96	10	10	-	-	-	-	-	-	-	-	-	-
Congenital malformations and chromosomal abnormalities	52	Q00-Q99	35	17	-	3	3	5	-	2	4	-	1	-
Congenital malformations of the:-														
Nervous system	53	Q00-Q07	8	4	-	1	1	1	-	-	1	-	-	-
Circulatory system	54	Q20-Q28	8	3	-	-	2	3	-	-	-	-	-	-
Symptoms, signs, abnormal findings, ill-defined causes	55	R00-R99	12	2	-	-	-	1	4	1	4	-	-	-
Sudden infant death syndrome	56	R95	2	2	-	-	-	-	-	-	-	-	-	-
Unknown and unspecified causes	57	R96-R99	6	-	-	-	-	1	3	1	1	-	-	-
External causes of injury and poisoning	58	V01-Y89	249	-	1	1	39	47	42	37	26	27	19	10
Accidents	59	V01-X59	133	-	1	-	23	23	14	16	13	17	17	9
of which: Transport accidents	60	V01-V99	43	-	-	-	16	10	2	3	6	2	4	-
Accidental falls	61	W00-W19	29	-	1	-	-	1	1	5	1	9	7	4
Accidental poisoning	62	X40-X49	34	-	-	-	6	10	7	7	2	2	-	-
other accidents			27	-	-	-	1	2	4	1	4	4	6	5
Suicide and intentional self harm	63	X60-X84	80	-	-	1	12	15	22	15	9	4	2	-
Homicide/assault	64	X85-Y09	5	-	-	-	2	1	-	-	1	1	-	-
Events of undetermined intent	65	Y10-Y34	27	-	-	-	2	8	6	4	2	5	-	-
All other external causes			4	-	-	-	-	-	-	2	1	-	-	1

¹ Stillbirths not included.

Table 13 Female deaths registered classified by cause and age group

Cause of Death	65 COD Code	ICD-10 Code	Total Females	Age Group										
				Under 1	1-4	5-14	15-24	25-34	35-44	45-54	55-64	65-74	75-84	85 and over
Total Female Deaths	0	A00-Y89	3,130	16	7	5	15	29	56	127	272	471	969	1,163
Infectious and parasitic diseases:-	1	A00-B99	19	-	-	-	-	2	-	-	-	3	8	6
Tuberculosis	2	A15-A19,B90	1	-	-	-	-	-	-	-	-	-	1	-
Meningococcal infection	3	A39	1	-	-	-	-	-	-	-	-	-	1	-
AIDS (HIV Disease)	4	B20-B24	1	-	-	-	-	1	-	-	-	-	-	-
Viral Hepatitis	5	B15-B19	1	-	-	-	-	1	-	-	-	-	-	-
Other infectious and parasitic diseases			15	-	-	-	-	-	-	-	-	3	6	6
Neoplasms	6	C00-D48	924	-	1	-	3	8	35	71	159	225	276	146
Malignant Neoplasms of the:-	7	C00-C97	908	-	-	-	3	8	35	71	158	223	270	140
Lip, oral cavity, pharynx	8	C00-C14	9	-	-	-	-	-	-	1	1	4	1	2
Oesophagus	9	C15	26	-	-	-	-	-	1	1	1	9	6	8
Stomach	10	C16	30	-	-	-	-	1	3	3	3	9	10	1
Colon	11	C18	54	-	-	-	-	-	-	1	9	15	16	13
Rectum and anus	12	C19-C21	39	-	-	-	-	1	2	6	5	12	9	4
Liver and the intrahepatic bile ducts	13	C22	24	-	-	-	-	-	-	-	3	5	8	8
Pancreas	14	C25	54	-	-	-	-	-	-	2	7	11	24	10
Larynx and trachea/bronchus /lung	15	C32-C34	144	-	-	-	-	-	1	13	31	37	47	15
Skin	16	C43	10	-	-	-	-	-	-	2	2	1	4	1
Breast	17	C50	159	-	-	-	-	2	14	25	33	31	32	22
Cervix uteri	18	C53	11	-	-	-	-	-	1	5	3	1	-	1
Other parts of uterus	19	C54-C55	21	-	-	-	-	-	-	2	7	5	5	2
Ovary	20	C56	64	-	-	-	-	1	2	5	14	23	16	3
Prostate	21	C61	-	-	-	-	-	-	-	-	-	-	-	-
Kidney	22	C64	20	-	-	-	-	-	1	1	4	6	4	4
Bladder	23	C67	13	-	-	-	-	-	1	-	1	4	6	1
Lymph/haematopoietic tissue	24	C81-C96	60	-	-	-	-	-	3	1	11	12	23	10
Other malignant neoplasms			170	-	-	-	3	3	6	3	23	38	59	35
Diseases of the blood and blood-forming organs, immunological disorders	25	D50-D89	13	-	-	-	-	-	-	-	1	3	2	7
Endocrine, Nutritional and metabolic diseases	26	E00-E90	93	1	-	2	-	3	1	2	3	13	32	36
Diabetes mellitus	27	E10-E14	66	-	-	-	-	-	1	2	2	12	22	27
Mental and behavioural disorders	28	F00-F99	75	-	-	-	1	-	-	-	4	1	17	52
Alcohol abuse (including alcoholic psychosis)	29	F10	4	-	-	-	-	-	-	-	3	1	-	-
Drug dependence, toxicomania	30	F11-F16,F18-F19	1	-	-	-	1	-	-	-	-	-	-	-
Diseases of the nervous system and the sense organs	31	G00-H95	110	-	-	-	1	1	1	5	10	11	36	45
Meningitis	32	G00-G03	-	-	-	-	-	-	-	-	-	-	-	-
Diseases of the Circulatory System:-	33	I00-I99	1,135	-	-	-	2	6	4	23	50	126	378	546
Ischaemic heart disease	34	I20-I25	544	-	-	-	-	1	-	10	25	66	184	258
<i>of which: (Acute myocardial infarction)</i>		<i>I21</i>	<i>270</i>	-	-	-	-	-	-	<i>3</i>	<i>10</i>	<i>26</i>	<i>103</i>	<i>128</i>
Other heart disease	35	I30-I33,I39-I52	143	-	-	-	2	1	-	3	5	14	48	70
Cerebrovascular disease	36	I60-I69	289	-	-	-	-	3	1	9	13	22	94	147
Other diseases of circulatory system			159	-	-	-	-	1	3	1	7	24	52	71

Diseases of the Respiratory system	37	J00-J99	376	-	-	-	-	-	1	2	14	46	122	191
Influenza	38	J10-J11	-	-	-	-	-	-	-	-	-	-	-	-
Pneumonia	39	J12-J19	159	-	-	-	-	-	-	2	4	12	41	100
Chronic Lower respiratory disease	40	J40-J47	130	-	-	-	-	-	-	-	8	22	54	46
of which: Asthma	41	J45-J46	6	-	-	-	-	-	-	-	-	1	5	-
Other diseases of the respiratory system			87	-	-	-	-	-	1	-	2	12	27	45
Diseases of the Digestive system	42	K00-K93	132	-	1	-	-	-	4	10	12	20	44	41
Ulcer of stomach, duodenum and jejunum	43	K25-K28	10	-	-	-	-	-	-	-	2	1	2	5
Chronic liver disease	44	K70,K73-K74	25	-	-	-	-	-	2	5	5	8	3	2
Other diseases of the digestive system			97	-	1	-	-	-	2	5	5	11	39	34
Diseases of the skin and subcutaneous tissue	45	L00-L99	7	-	-	-	-	-	-	-	-	1	2	4
Diseases of the musculoskeletal system/connective tissue	46	M00-M99	31	-	-	-	-	1	1	1	2	5	9	12
Rheumatoid arthritis and osteoarthritis	47	M05-M06,M15-M19	14	-	-	-	-	-	-	-	2	3	6	3
Diseases of the genitourinary system	48	N00-N99	91	-	-	-	-	-	-	-	3	7	25	56
Diseases of the kidney and ureter	49	N00-N29	60	-	-	-	-	-	-	-	2	5	15	38
Complications of pregnancy, childbirth and puerperium	50	O00-O99	-	-	-	-	-	-	-	-	-	-	-	-
Certain conditions originating in the perinatal period¹	51	P00-P96	7	6	1	-	-	-	-	-	-	-	-	-
Congenital malformations and chromosomal abnormalities	52	Q00-Q99	22	8	1	2	2	2	-	1	1	2	3	-
Congenital malformations of the:-														
Nervous system	53	Q00-Q07	3	1	-	-	1	1	-	-	-	-	-	-
Circulatory system	54	Q20-Q28	8	4	-	1	1	-	-	-	-	1	1	-
Symptoms, signs, abnormal findings, ill-defined causes	55	R00-R99	10	1	1	-	-	1	-	-	-	-	3	4
Sudden infant death syndrome	56	R95	2	1	1	-	-	-	-	-	-	-	-	-
Unknown and unspecified causes	57	R96-R99	-	-	-	-	-	-	-	-	-	-	-	-
External causes of injury and poisoning	58	V01-Y89	85	-	2	1	6	5	9	12	13	8	12	17
Accidents	59	V01-X59	64	-	2	1	5	2	6	8	7	8	9	16
of which: Transport accidents	60	V01-V99	15	-	2	1	3	-	1	3	1	2	2	-
Accidental falls	61	W00-W19	15	-	-	-	-	-	-	-	1	4	2	8
Accidental poisoning	62	X40-X49	14	-	-	-	2	2	3	3	3	1	-	-
other accidents			20	-	-	-	-	-	2	2	2	1	5	8
Suicide and intentional self harm	63	X60-X84	8	-	-	-	1	-	1	3	3	-	-	-
Homicide/assault	64	X85-Y09	2	-	-	-	-	2	-	-	-	-	-	-
Events of undetermined intent	65	Y10-Y34	6	-	-	-	-	1	1	1	3	-	-	-
All other external causes			5	-	-	-	-	-	1	-	-	-	3	1

¹ Stillbirths not included.

Table 14 Infant and neonatal mortality by area of residence of deceased

Area of residence	Infant mortality		Neonatal mortality	
	Number	Rate	Number	Rate
STATE	48	2.6	32	1.7
LEINSTER	33	3.1	24	2.3
Carlow	0	0.0	0	0.0
Dublin City	6	3.2	4	2.1
South Dublin	1	0.8	1	0.8
Fingal	3	2.1	3	2.1
Dun Laoghaire Rathdown	6	8.7	4	5.8
Kildare	6	5.8	5	4.9
Kilkenny	1	2.9	0	0.0
Laois	1	3.0	1	3.0
Longford	0	0.0	0	0.0
Louth	0	0.0	0	0.0
Meath	2	2.2	2	2.2
Offaly	1	3.1	1	3.1
Westmeath	1	2.8	1	2.8
Wexford	3	5.0	1	1.7
Wicklow	2	3.2	1	1.6
MUNSTER	8	1.6	4	0.8
Clare	0	0.0	0	0.0
Cork City	1	3.1	0	0.0
Cork County	3	1.7	2	1.1
Kerry	0	0.0	0	0.0
Limerick City	0	0.0	0	0.0
Limerick County	1	1.8	0	0.0
North Tipperary	2	6.0	1	3.0
South Tipperary	1	3.5	1	3.5
Waterford City	0	0.0	0	0.0
Waterford County	0	0.0	0	0.0
CONNACHT	5	2.4	2	1.0
Galway City	0	0.0	0	0.0
Galway County	1	1.3	0	0.0
Leitrim	1	9.2	1	9.2
Mayo	2	4.0	0	0.0
Roscommon	0	0.0	0	0.0
Sligo	1	4.3	1	4.3
ULSTER (PART OF)	2	2.0	2	2.0
Cavan	0	0.0	0	0.0
Donegal	2	3.8	2	3.8
Monaghan	0	0.0	0	0.0
REGIONAL AUTHORITIES:				
Border	4	2.3	4	2.3
Midland	3	2.6	3	2.6
West	3	1.8	0	0.0
Dublin	16	3.1	12	2.3
Mid-East	10	3.9	8	3.1
Mid-West	3	1.9	1	0.6
South-East	5	2.6	2	1.0
South-West	4	1.5	2	0.8

Infant mortality rates: Deaths of infants under one year per 1,000 live births, classified by area of residence of mother.

Neonatal mortality rates: Deaths of infants under 28 days per 1,000 live births, classified by area of residence of mother.

Infant and neonatal mortality rates in some areas, based on small numbers are subject to considerable fluctuation and caution should be exercised in their interpretation.

Appendix

Glossary of terms

NUTS III Regional Authority areas

Border, Midland, West, Dublin, Mid-East, Mid-West, South-East, South-West

Border: Cavan, Donegal, Leitrim, Louth, Monaghan, Sligo.

Midland: Laois, Longford, Offaly, Westmeath.

West: Galway City, Galway County, Mayo, Roscommon.

Dublin: Dublin City, South Dublin, Fingal, Dun Laoghaire-Rathdown.

Mid-East: Kildare, Meath, Wicklow.

Mid-West: Clare, Limerick City, Limerick County, North Tipperary.

South-East: Carlow, Kilkenny, South Tipperary, Waterford City, Waterford County, Wexford.

South-West: Cork City, Cork County, Kerry.

Causes of death Eurostat shortlist (August 1998)

Nr	Disease or external cause	ICD-9 Code	ICD-10 Code
00	All causes of death	001-E999	A00-Y89
01	Infectious and Parasitic Diseases:-	001-139,279.8	A00-B99
02	Tuberculosis	010-018,137	A15-A19,B90
03	Meningococcal Infection	036	A39
04	AIDS (HIV Disease)	042-044,279.8	B20-B24
05	Viral Hepatitis	070	B15-B19
	other Infectious and Parasitic Diseases	Rem (001-139)	Rem (A00-B99)
06	Neoplasms	140-239	C00-D48
07	Malignant Neoplasms of the:-	140-208	C00-C97
08	Lip, Oral Cavity, Pharynx	140-149	C00-C14
09	Oesophagus	150	C15
10	Stomach	151	C16
11	Colon	153	C18
12	Rectum and Anus	154	C19-C20-C21
13	Liver and the Intrahepatic Bile Ducts	155	C22
14	Pancreas	157	C25
15	Larynx and Trachea/Bronchus/Lung	161-162	C32-C34
16	Skin	172	C43
17	Breast	174-175	C50
18	Cervix Uteri	180	C53
19	Other Parts of the Uterus	179,182	C54-C55
20	Ovary	183.0	C56
21	Prostate	185	C61
22	Kidney	189.0	C64
23	Bladder	188	C67
24	Lymph/Haematopoietic Tissue	200-208	C81-C96
	other Malignant Neoplasms	Rem (140-208)	Rem. (C00-C97)
25	Diseases of the Blood and Blood-forming Organs, Immunological disorders ¹	279-289	D50-D89
26	Endocrine, Nutritional and Metabolic Diseases	240-278	E00-E90
27	Diabetes Mellitus	250	E10-E14
28	Mental and Behavioural Disorders	290-319	F00-F99
29	Alcohol abuse (including Alcoholic Psychosis)	291,303	F10
30	Drug Dependence, Toxicomania	304-305	F11-F16,F18-F19
31	Diseases of the Nervous System and the Sense Organs	320-389	G00-H95
32	Meningitis	320-322	G00-G03
33	Diseases of the Circulatory System:-	390-459	I00-I99
34	Ischaemic Heart Disease	410-414	I20-I25
	<i>(Acute Myocardial Infarction)</i>	410	I21
35	Other Heart Disease	420-423,425-429	I30-I33,I39-I52
36	Cerebrovascular Disease	430-438	I60-I69
	other Diseases of the Circulatory System	Rem (390-459)	Rem. (I00-I99)
37	Diseases of the Respiratory System	460-519	J00-J99
38	Influenza	487	J10-J11
39	Pneumonia	480-486	J12-J18
40	Chronic Lower Respiratory Disease	490-494,496	J40-J47
41	Asthma	493	J45-J46
	other Diseases of the Respiratory System	Rem (460-519)	Rem. (J00-J99)
42	Diseases of the Digestive System	520-579	K00-K93
43	Ulcer of Stomach, Duodenum and Jejunum	531-534	K25-K28
44	Chronic Liver Disease	571.0-571.9	K70,K73-K74
	other Diseases of the Digestive System	Rem (520-579)	Rem. (K00-K93)
45	Diseases of the Skin and Subcutaneous Tissue	680-709	L00-L99
46	Diseases of the Musculoskeletal System/Connective Tissue	710-739	M00-M99
47	Rheumatoid Arthritis and Osteoarthritis	714-715	M05-M06,M15-M19
48	Diseases of the Genitourinary System	580-629	N00-N99
49	Diseases of the Kidney and Ureter	580-594	N00-N29
50	Complications of Pregnancy, Childbirth and Puerperium	630-676	O00-O99
51	Certain Conditions Originating in the Perinatal Period (stillbirths not included)	760-779	P00-P96
52	Congenital Malformations and Chromosomal Abnormalities	740-759	Q00-Q99
53	Congenital malformations of the Nervous System	740-742	Q00-Q07
54	Congenital malformations of the Circulatory System	745-747	Q20-Q28
55	Symptoms, Signs, Abnormal Findings, Ill-defined Causes	780-799	R00-R99
56	Sudden Infant Death Syndrome	798.0	R95
57	Unknown and Unspecified Causes	798.1-9,799	R96-R99
	Injury and Poisoning	800-999	S00-T98
58	External Causes of Injury and Poisoning (included in the Foregoing)	E800-E999	V01-Y89
59	Accidents	E800-E929	V01-X59
60	Transport Accidents	E800-E848	V01-V99
	Road transport Accidents	E810-E829, E929.0	V01-V80,V87,V89,Y85
	Motor vehicle transport Accidents	E810-E819	
61	Accidental Falls	E880-E888	W00-W19
62	Accidental Poisoning	E850-E869	X40-X49
	other accidents	Rem (E800-E929)	Rem (V01-X59)
63	Suicide and Intentional Self Harm	E950-E959	X60-X84
64	Homicide/Assault	E960-E969	X85-Y09
65	Cause Undetermined	E980-E989	Y10-Y34
	other External Causes	Rem (E930-E999)	

¹ 279.8 not included

Estimated Population classified by Sex and Age Group, 2002 - 2007*thousands*

Sex and Age Group	Persons in April of each year					
	2002	2003	2004	2005	2006 ¹	2007 ²
Total persons	3,917.2	3,979.9	4,045.2	4,133.8	4,239.8	4,339.0
0 - 4 years	277.6	284.3	290.7	296.5	302.3	312.3
5 - 9 "	264.1	268.7	274.9	280.6	288.3	295.9
10 - 14 "	285.7	281.7	278.2	276.3	273.9	275.6
15 - 19 "	313.2	304.7	298.4	292.8	290.3	286.0
20 - 24 "	328.3	334.0	336.1	339.5	342.5	347.8
25 - 29 "	312.7	317.4	325.4	345.2	373.1	405.1
30 - 34 "	304.7	316.1	325.1	335.8	349.4	358.0
35 - 39 "	290.9	296.4	303.5	312.1	322.1	331.7
40 - 44 "	272.0	279.2	286.0	294.1	301.3	305.8
45 - 49 "	249.6	253.7	259.2	265.4	274.7	279.8
50 - 54 "	230.8	235.1	238.1	243.1	247.1	252.6
55 - 59 "	197.3	206.6	213.9	221.4	225.3	227.4
60 - 64 "	154.3	160.3	166.0	172.1	181.7	190.5
65 - 69 "	133.5	135.0	137.5	140.8	143.4	143.5
70 - 74 "	112.1	113.8	115.7	117.4	119.2	119.2
75 - 79 "	89.8	89.5	90.0	91.0	92.5	92.1
80 - 84 "	58.9	61.7	63.1	64.0	64.9	65.4
85 years and over	41.7	41.9	43.4	45.7	48.0	50.3
Total males	1,946.2	1,976.9	2,011.9	2,061.8	2,121.2	2,171.1
0 - 4 years	142.0	145.4	148.7	151.7	154.6	160.5
5 - 9 "	135.9	137.8	141.2	144.3	148.0	151.3
10 - 14 "	146.1	144.4	142.8	142.0	140.5	141.3
15 - 19 "	160.4	155.9	152.7	149.8	148.2	145.4
20 - 24 "	165.3	167.0	168.2	170.0	172.8	175.0
25 - 29 "	156.1	158.6	162.9	174.1	189.3	204.7
30 - 34 "	152.4	158.2	161.8	168.7	177.5	182.6
35 - 39 "	144.5	147.4	152.4	157.8	163.8	169.1
40 - 44 "	135.3	138.9	142.5	147.1	151.4	153.6
45 - 49 "	125.0	126.9	129.7	132.9	138.0	140.6
50 - 54 "	116.6	118.5	120.1	122.9	124.6	127.1
55 - 59 "	99.8	104.9	108.5	112.0	113.9	114.9
60 - 64 "	77.6	80.7	83.8	86.7	91.6	96.0
65 - 69 "	65.3	66.0	67.3	69.1	70.9	71.3
70 - 74 "	51.7	53.2	54.6	55.7	56.5	56.6
75 - 79 "	37.4	37.3	37.8	38.8	40.1	40.6
80 - 84 "	22.3	23.4	23.9	24.3	24.7	25.0
85 years and over	12.5	12.6	13.2	14.0	14.8	15.5
Total females	1,971.0	2,002.9	2,033.3	2,072.0	2,118.7	2,167.9
0 - 4 years	135.6	138.9	142.0	144.8	147.7	151.8
5 - 9 "	128.2	130.9	133.8	136.3	140.3	144.6
10 - 14 "	139.6	137.3	135.4	134.4	133.4	134.2
15 - 19 "	152.8	148.8	145.7	143.0	142.0	140.6
20 - 24 "	163.0	167.0	167.9	169.5	169.7	172.8
25 - 29 "	156.6	158.8	162.5	171.1	183.8	200.4
30 - 34 "	152.3	157.9	163.4	167.0	171.9	175.3
35 - 39 "	146.4	149.0	151.1	154.4	158.3	162.5
40 - 44 "	136.7	140.3	143.5	147.1	149.9	152.2
45 - 49 "	124.6	126.8	129.6	132.6	136.8	139.3
50 - 54 "	114.3	116.6	118.0	120.2	122.5	125.5
55 - 59 "	97.5	101.6	105.4	109.4	111.4	112.5
60 - 64 "	76.7	79.6	82.2	85.4	90.2	94.6
65 - 69 "	68.2	69.0	70.2	71.7	72.5	72.2
70 - 74 "	60.4	60.6	61.1	61.7	62.6	62.6
75 - 79 "	52.4	52.3	52.2	52.2	52.3	51.5
80 - 84 "	36.6	38.3	39.2	39.7	40.2	40.4
85 years and over	29.2	29.3	30.2	31.7	33.2	34.8

¹ De Facto² Preliminary