



Central Statistics Office
An Phríomh-Oifig Staidrimh

Vital Statistics

Second Quarter

2007

Published by the Stationery Office, Dublin, Ireland.

To be purchased from the:

Central Statistics Office, Information Section, Skehard Road, Cork,

Government Publications Sales Office, Sun Alliance House,
Molesworth Street, Dublin 2,

or through any bookseller.

Compiled by the Central Statistics Office on behalf of the Department of
Health and Children.

[No. 573]

Price €6.00

February 2008.

© Government of Ireland 2008

Material compiled and presented by
Central Statistics Office.

Reproduction is authorised, except for commercial
purposes, provided the source is acknowledged.

ISBN 0-7557-7218-0

ISSN 0790-7710

Contents

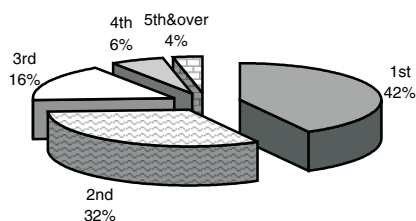
Second Quarter 2007

	Page
Commentary	4
Tables	
Table 1	Marriages, births, deaths and natural increase 8
Table 2	Annual marriage, birth, death and natural increase rates per 1,000 population 9
Table 3	Births registered, classified by area of residence of mother 10
Table 4	Births registered, classified by age of mother and previous number of liveborn children 11
Table 5	Number and percentage of births within and outside marriage, classified by age of mother 12
Table 6	Number and percentage of births registered within and outside marriage, classified by area of residence of mother 13
Table 7	Births registered, classified by area of residence and age of mother 14
Table 8	Births registered outside marriage, classified by area of residence and age of mother 15
Table 9	Deaths registered by county of residence of deceased 16
Table 10	Deaths registered by cause of death and county of residence of deceased 17
Table 11	Deaths registered classified by cause and age group 18
Table 12	Male deaths registered, classified by cause and age group 20
Table 13	Female deaths registered classified by cause and age group 22
Table 14	Infant and neonatal mortality by area of residence of deceased 24
Appendix	
	Glossary of terms 26
	Causes of death Eurostat shortlist (August 1998) 27
	Estimated population classified by sex and age group, 2002-2007 28

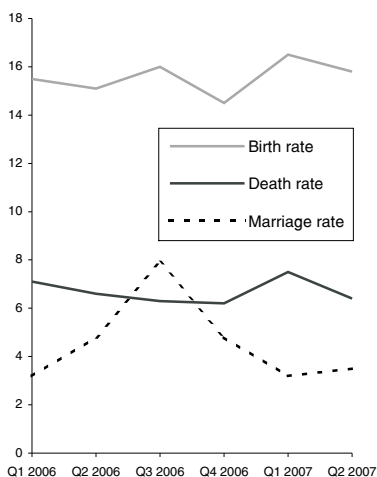
Second Quarter 2007

Commentary

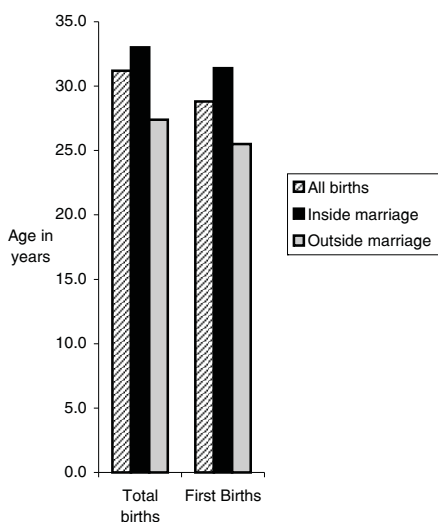
Birth Order



Annual birth, death and marriage rates per 1,000 population



Average age at maternity



Introduction

This report has been prepared by the Central Statistics Office for the Minister for Health and Children in accordance with the provisions of Section 2 of the Vital Statistics and Births, Deaths and Marriages Registration Act, 1952 and Section 73 of the Civil Registration Act 2004.

Births

There were 17,127 births registered in quarter 2 of 2007, 8,667 males and 8,460 females, an increase of 1,148 on the quarter 2 figure of 2006. The quarter 2 2007 total is 24.8% higher than in 1998 when 13,729 babies were registered.

This represents an annual birth rate of 15.8 per 1,000 of the population, 0.7 above quarter 2 of 2006. This rate is 1.0 per 1,000 population higher than in 1998.

Birth order

A total of 6,901 births (42%) were to first time mothers in quarter 2 of 2007. Second time mothers had 5,271 births (32.1%) (See Table 4). This compares to 5,181 (37.9%) first births registered in quarter 2 1998.

Age of mothers

The average age of mothers for births registered in quarter 2 2007 was 31.2 years, 0.1 years higher than the corresponding figure in quarter 2 2006, and 1.1 years more than in quarter 2 1998 (See Table 2). The average age of mothers having their first child in quarter 2 2007 was 28.8 years (See Table 7).

Births outside marriage

There were 5,428 births registered as outside marriage in quarter 2 of 2007. This accounted for 31.7% of all births, an increase of 0.1% on quarter 2 2006. The highest percentage of births outside marriage occurred in Limerick City at 54%, while the lowest percentage was in Cork County at 22% (see Table 8). In quarter 2 1998, 3,674 births were registered outside marriage or 26.8% of all births.

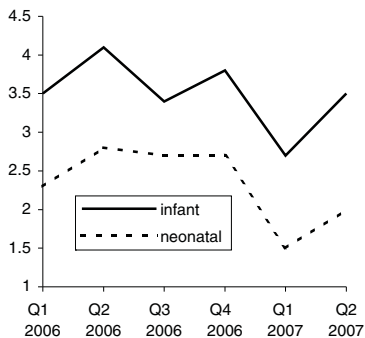
Deaths

There were 6,902 deaths registered in quarter 2 2007, 3,493 males and 3,409 females. This represents an annual death rate of 6.4 per 1,000 population.

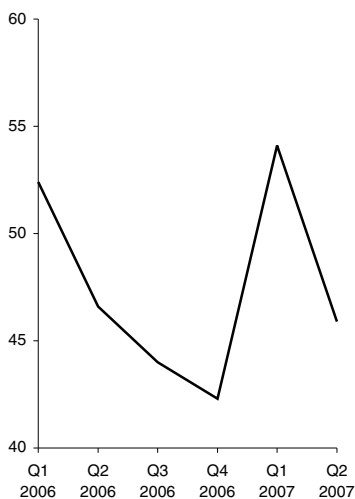
There were 60 infant deaths registered in quarter 2 2007 giving an infant mortality rate of 3.5 deaths per 1,000 live births. Neonatal deaths are deaths of infants at ages under 4 weeks. There were 34 neonatal deaths registered in quarter 2 2007, a neonatal mortality rate of 2 deaths per 1,000 live births.

There were 5,394 deaths of persons aged 65 and over registered in quarter 2 2007. This represents an annual death rate of 45.9 per 1,000 population aged 65 and over.

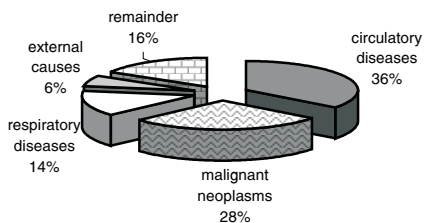
Infant and neonatal mortality rates per 1,000 live births



Death rates for ages 65 & over per 1,000 relevant population



Principal causes of death



Cause of death

• Diseases of the Circulatory System:

Diseases of the Circulatory System accounted for 2,432 deaths, or an annual rate of 2.2 per 1,000 population. Of these, 1,307 were due to Ischaemic Heart Disease and 507 to Cerebrovascular Disease.

• Malignant Neoplasms:

There were 1,930 deaths from malignant neoplasms. This is equivalent to an annual rate of 1.8 per 1,000 population.

• Diseases of the Respiratory System:

Deaths from pneumonia numbered 341; chronic lower respiratory disease accounted for 378 deaths and 176 deaths resulted from other respiratory diseases.

Marriages

The number of marriages registered during the quarter was 5,536 equivalent to an annual marriage rate of 5.1 per 1,000 population, 0.3 above the corresponding quarter of 2006. The quarter 2 2007 total is 50.1% higher than in quarter 2 1998 when 3,689 marriages were registered.

Population

The estimated population in April 2007 was 4,339,000.

Methodology

All figures in this report are classified by quarter of registration. Delay in the registration of some births, deaths and marriages result in them being included in a later period in these quarterly reports.

Changes in methodology (Deaths)

This publication continues with the 3 major changes in the methods by which mortality statistics are compiled. These changes were introduced in the Vital Statistics First Quarter 2007 publication.

- 1) Underlying Cause of Death is classified according to International Classification of Diseases, Version 10 (ICD10) instead of to International Classification of Diseases, Version 9 (ICD9).
- 2) Deaths where there was not an inquest have been coded using the automated coding system developed by the U.S National Centre for Health Statistics (NCHS). Previously the Underlying Cause of Death was chosen manually for all deaths.
- 3) All deaths registered in the Quarter have been included in the statistics, in some cases with a provisional cause of death. Previously the practice was not to include deaths in the quarterly statistics until the cause of death had been definitely established.

Because of these changes, caution should be taken in directly comparing these mortality statistics with those of previous quarters. Many countries have found that moving to ICD10 does affect certain specific categories of causes of death. In particular, a significant drop in the number of deaths attributed to pneumonia and bronchopneumonia has been observed in some countries after moving to ICD10. These deaths were instead assigned to other conditions included on the death certificate.

The effect of the third change above has been to increase the number of deaths in our statistics as compared with previous years. Statistics for deaths due to

external causes are particularly affected by this change. The previous method meant that some deaths were included in a later quarter of the year from when they had been registered, because of the delay involved in establishing a definite cause of death. Direct comparison with previous years will be possible only once all 4 quarters of 2007 have been published.

To aid comparability, we are currently completing a Bridge Coding study based on deaths registered in 2005. In this study, deaths that were previously coded in ICD9 using manual coding are being recoded independently in ICD10 using the automated system. The resulting differences in the number of deaths assigned to specific causes using the respective methods will give us a good insight into the effect of these changes on future mortality statistics. This study will be published in 2008.

Tables

Table 1 Marriages, births, deaths and natural increase

	Marriages ¹	Live Births				Deaths				Natural Increase
		Total	First	Outside marriage	Average Age	Total	Infant	Neonatal	65 & over	
Quarter 1										
1998	1,642	13,405	5,209	3,875	30.0	8,927	82	52	7,244	4,478
1999	2,064	13,388	5,491	4,275	30.0	9,867	80	61	8,104	3,521
2000	2,200	13,984	5,693	4,656	30.0	9,804	86	59	8,062	4,180
2001	2,168	14,785	5,963	4,877	30.1	8,408	81	56	6,747	6,377
2002	2,484	14,972	6,127	4,877	30.3	7,749	73	51	6,281	7,223
2003	2,571	15,238	6,158	5,080	30.3	7,756	67	52	6,259	7,482
2004	2,676	15,599	6,082	5,181	30.7	7,873	72	56	6,347	7,726
2005	2,892	15,334	6,290	5,147	30.9	7,352	65	47	5,920	7,982
2006	3,267	15,958	6,449	5,481	30.9	7,320	56	36	6,040	8,638
2007	3,399	17,473	7,207	5,905	31.1	7,910 ²	48	26	6,326	9,563
Quarter 2										
1998	3,689	13,729	5,181	3,674	30.1	8,021	88	56	6,421	5,708
1999	4,577	13,585	5,299	4,053	30.2	7,777	79	55	6,155	5,808
2000	4,670	13,794	5,427	4,260	30.3	7,650	77	52	5,974	6,144
2001	4,533	14,303	5,615	4,307	30.5	7,260	74	55	5,808	7,043
2002	4,810	15,247	5,858	4,672	30.5	7,680	91	64	6,074	7,567
2003	4,827	15,582	6,095	4,689	30.6	7,203	83	59	5,625	8,379
2004	4,719	15,535	5,897	4,874	30.8	6,881	74	53	5,351	8,654
2005	5,374	15,306	5,922	4,810	31.1	7,349	70	52	5,826	7,957
2006	5,094	15,979	6,315	5,056	31.1	6,967	65	44	5,488	9,012
2007	5,536	17,127	6,901	5,428	31.2	6,902 ²	60	34	5,394	10,225
Quarter 3										
1998	7,530	14,027	5,552	3,901	30.1	7,187	72	57	5,625	6,840
1999	7,342	13,840	5,635	4,323	30.0	6,645	70	44	5,218	7,195
2000	7,593	13,967	5,641	4,451	30.2	6,832	89	54	5,372	7,135
2001	7,557	14,688	5,901	4,472	30.3	6,974	97	67	5,403	7,714
2002	7,580	15,593	6,333	4,855	30.4	6,941	68	50	5,391	8,652
2003	7,996	15,909	6,240	4,981	30.6	6,639	85	68	5,147	9,270
2004	8,168	15,605	6,171	5,100	30.8	6,473	72	43	5,123	9,132
2005	8,347	16,170	6,548	5,101	30.9	6,380	50	33	4,919	9,790
2006	8,341	16,920	6,891	5,541	31.0	6,657	58	46	5,146	10,263
2007										
Quarter 4										
1998	3,922	12,390	5,053	3,683	30.1	7,217	88	67	5,566	5,173
1999	4,543	12,541	5,139	3,810	30.2	7,394	64	48	5,815	5,147
2000	4,705	12,494	5,236	3,868	30.2	6,829	70	53	5,324	5,665
2001	4,988	14,106	5,915	4,393	30.3	7,170	85	57	5,422	6,936
2002	5,682	14,709	5,989	4,411	30.5	6,978	74	49	5,378	7,731
2003	4,908	14,788	5,883	4,563	30.7	7,225	76	52	5,568	7,563
2004	5,056	14,945	5,975	4,783	30.9	6,924	82	62	5,253	8,021
2005	4,742	14,232	5,861	4,470	31.1	6,360	59	45	4,827	7,872
2006	5,139	15,380	6,456	5,217	31.0	6,535	58	42	4,946	8,845
2007										
Total										
1998	16,783	53,551	20,995	15,133	30.1	31,352	330	232	24,856	22,199
1999	18,526	53,354	21,564	16,461	30.1	31,683	293	208	25,292	21,671
2000	19,168	54,239	21,997	17,235	30.2	31,115	322	218	24,732	23,124
2001	19,246	57,882	23,394	18,049	30.3	29,812	337	235	23,380	28,070
2002	20,556	60,521	24,307	18,815	30.4	29,348	306	214	23,124	31,173
2003	20,302	61,517	24,376	19,313	30.6	28,823	311	231	22,599	32,694
2004	20,619	61,684	24,125	19,938	30.8	28,151	300	214	22,074	33,533
2005	21,355	61,042	24,621	19,528	31.0	27,441	244	177	21,492	33,601
2006	21,841	64,237	26,111	21,295	31.0	27,479	237	168	21,620	36,758
2007										

¹ 1996, 2002 and 2005 marriage figures are final. All other marriage figures are subject to revision.² Not directly comparable with previous years. See 'Commentary' for changes in methodology.

Table 2 Annual marriage, birth, death and natural increase rates per 1,000 population

	Marriages	Live Births			Deaths				Natural Increase
		Total	% First births ¹	% Outside marriage	Total	Infant Mortality ²	Neonatal Mortality ³	65 & over	
Quarter 1									
1998	1.8	14.6	39.0	28.9	9.7	6.1	3.9	69.6	4.9
1999	2.2	14.5	41.1	31.9	10.7	6.0	4.6	77.1	3.8
2000	2.4	14.9	40.9	33.3	10.5	6.1	4.2	76.4	4.5
2001	2.3	15.6	40.5	33.0	8.9	5.5	3.8	63.5	6.7
2002	2.6	15.6	41.2	32.6	8.1	4.9	3.4	58.5	7.5
2003	2.6	15.6	40.7	33.3	7.9	4.4	3.4	57.4	7.6
2004	2.7	15.7	40.4	33.2	7.9	4.6	3.6	57.3	7.8
2005	2.9	15.2	41.3	33.6	7.3	4.2	3.1	52.5	7.9
2006	3.2	15.5	41.1	34.3	7.1	3.5	2.3	52.4	8.4
2007	3.2	16.5	42.8	33.8	7.5 ⁴	2.7	1.5	54.1	9.0
Quarter 2									
1998	4.0	14.8	37.9	26.8	8.7	6.4	4.1	61.1	6.2
1999	4.9	14.5	39.2	29.8	8.3	5.8	4.0	58.4	6.2
2000	4.9	14.6	39.5	30.9	8.1	5.6	3.8	56.3	6.5
2001	4.7	14.9	39.5	30.1	7.5	5.2	3.8	54.1	7.3
2002	4.9	15.6	38.8	30.6	7.8	6.0	4.2	55.7	7.7
2003	4.9	15.7	39.5	30.1	7.2	5.3	3.8	50.8	8.4
2004	4.7	15.4	38.8	31.4	6.8	4.8	3.4	47.5	8.6
2005	5.2	14.8	38.8	31.4	7.1	4.6	3.4	50.6	7.7
2006	4.8	15.1	41.1	31.6	6.6	4.1	2.8	46.9	8.5
2007	5.1	15.8	42.0	31.7	6.4 ⁴	3.5	2.0	45.9	9.4
Quarter 3									
1998	8.1	15.2	39.7	27.8	7.8	5.1	4.1	53.5	7.4
1999	7.8	14.8	40.9	31.2	7.1	5.1	3.2	49.5	7.7
2000	8.0	14.7	40.6	31.9	7.2	6.4	3.9	50.6	7.5
2001	7.9	15.3	40.4	30.4	7.3	6.6	4.6	50.3	8.0
2002	7.7	15.9	41.0	31.1	7.1	4.4	3.2	49.5	8.8
2003	8.0	16.0	39.6	31.3	6.7	5.3	4.3	46.5	9.3
2004	8.1	15.4	39.8	32.7	6.4	4.6	2.8	45.4	9.0
2005	8.1	15.7	40.7	31.5	6.2	3.1	2.0	42.7	9.5
2006	7.9	16.0	41.6	32.7	6.3	3.4	2.7	44.0	9.7
2007									
Quarter 4									
1998	4.2	13.4	41.0	29.7	7.8	7.1	5.4	53.0	5.6
1999	4.9	13.4	41.1	30.4	7.9	5.1	3.8	55.1	5.5
2000	5.0	13.2	42.1	31.0	7.2	5.6	4.2	50.1	6.0
2001	5.2	14.7	42.2	31.1	7.5	6.0	4.0	50.5	7.2
2002	5.8	15.0	41.2	30.0	7.1	5.0	3.3	49.3	7.9
2003	4.9	14.9	40.9	30.9	7.3	5.1	3.5	50.3	7.6
2004	5.0	14.8	40.3	32.0	6.8	5.5	4.1	46.6	7.9
2005	4.6	13.8	41.4	31.4	6.2	4.1	3.2	41.9	7.6
2006	4.8	14.5	42.3	33.9	6.2	3.8	2.7	42.3	8.3
2007									
Total									
1998	4.5	14.5	39.4	28.3	8.5	6.2	4.3	59.2	6.0
1999	5.0	14.3	40.6	30.9	8.5	5.5	3.9	59.9	5.8
2000	5.1	14.3	40.8	31.8	8.2	5.9	4.0	58.2	6.1
2001	5.0	15.0	40.7	31.2	7.7	5.8	4.1	54.4	7.3
2002	5.2	15.5	40.5	31.1	7.5	5.1	3.5	53.0	8.0
2003	5.1	15.5	40.2	31.4	7.2	5.1	3.8	51.0	8.2
2004	5.1	15.3	39.8	32.3	7.0	4.9	3.5	49.0	8.3
2005	5.2	14.8	40.5	32.0	6.6	4.0	2.9	46.7	8.1
2006	5.2	15.2	41.5	33.2	6.5	3.7	2.6	46.2	8.7
2007									

¹ First births divided by the total number of live births (excluding those with unstated parity), multiplied by 100.² Infant mortality is the number of infant deaths per 1,000 live births.³ Neonatal mortality is the number of neonatal (infants aged under 4 weeks) deaths per 1,000 live births.⁴ Not directly comparable with previous years. See 'Commentary' for changes in methodology.

Table 3 Births registered, classified by area of residence of mother

	Total	Male	Female	Rate ^(a)
STATE	17,127	8,667	8,460	15.8
LEINSTER	9,576	4,864	4,712	16.3
Carlow	221	101	120	17.2
Dublin City	1,702	856	846	13.1
South Dublin	1,140	554	586	18.0
Fingal	1,298	671	627	21.1
Dun Laoghaire Rathdown	643	313	330	13.0
Kildare	890	444	446	18.7
Kilkenny	321	170	151	14.3
Laois	298	156	142	17.4
Longford	144	84	60	16.4
Louth	404	223	181	14.2
Meath	838	436	402	20.1
Offaly	277	151	126	15.3
Westmeath	313	155	158	15.4
Wexford	544	272	272	16.1
Wicklow	543	278	265	16.8
MUNSTER	4,655	2,317	2,338	15.5
Clare	414	199	215	14.6
Cork City	354	190	164	11.6
Cork County	1,586	779	807	17.1
Kerry	498	268	230	13.9
Limerick City	200	95	105	14.9
Limerick County	513	252	261	15.2
North Tipperary	315	155	160	18.6
South Tipperary	299	154	145	14.0
Waterford City	210	108	102	17.9
Waterford County	266	117	149	16.7
CONNACHT	1,856	969	887	14.4
Galway City	266	131	135	14.4
Galway County	647	341	306	15.9
Leitrim	118	62	56	15.9
Mayo	405	217	188	12.8
Roscommon	190	102	88	12.6
Sligo	230	116	114	14.8
ULSTER (PART OF)	1,040	517	523	15.2
Cavan	289	135	154	17.6
Donegal	551	277	274	14.6
Monaghan	200	105	95	14.0
REGIONAL AUTHORITIES:				
Border	1,792	918	874	14.9
Midland	1,032	546	486	15.9
West	1,508	791	717	14.4
Dublin	4,783	2,394	2,389	15.8
Mid-East	2,271	1,158	1,113	18.3
Mid-West	1,442	701	741	15.8
South-East	1,861	922	939	15.7
South-West	2,438	1,237	1,201	15.4

(a) Births per year per 1,000 population. Annual rates based on estimated 2007 population.

Table 4 Births registered, classified by age of mother and previous number of liveborn children

Age of mother at maternity	Previous number of liveborn children							
	Total	0	1	2	3	4	5 or more	Not stated ^(a)
All ages	17,127	6,901	5,271	2,686	999	341	222	707
15 and under	20	20	-	-	-	-	-	-
16	39	38	1	-	-	-	-	-
17	93	89	3	1	-	-	-	-
18	193	176	15	2	-	-	-	-
19	295	257	32	4	-	-	-	2
Under 20	640	580	51	7	-	-	-	2
20	316	242	55	8	1	-	-	10
21	359	273	63	12	-	-	-	11
22	392	254	99	26	2	-	-	11
23	440	260	123	40	5	3	-	9
24	532	304	145	50	13	5	-	15
20-24	2,039	1,333	485	136	21	8	-	56
25	597	298	189	74	16	3	4	13
26	694	328	218	94	23	8	3	20
27	828	385	280	91	23	11	2	36
28	880	403	279	114	42	14	5	23
29	976	457	294	128	41	13	6	37
25-29	3,975	1,871	1,260	501	145	49	20	129
30	1,054	449	329	160	51	15	6	44
31	1,164	498	367	158	53	22	16	50
32	1,268	440	493	187	66	13	19	50
33	1,283	433	488	197	72	13	14	66
34	1,140	317	419	224	87	31	15	47
30-34	5,909	2,137	2,096	926	329	94	70	257
35	1,079	271	351	255	83	35	18	66
36	967	203	335	246	84	30	15	54
37	729	164	221	181	89	27	11	36
38	561	103	166	143	62	27	25	35
39	448	87	124	106	71	25	15	20
35-39	3,784	828	1,197	931	389	144	84	211
40 and over	775	151	181	184	113	46	48	52
Age not stated	5	1	1	1	2	-	-	-

^(a) Figures in this column are artificially high because of a temporary issue with the data. More complete information on number of previous children will be available in the 2007 Annual Summary

Table 5 Number and percentage of births registered within and outside marriage, classified by age of mother

Age of mother at maternity	Total	Married parents	Unmarried Parents		% to married parents	% to unmarried parents	
			Total	Same address		Total	Same address
	Number				Percentage		
All ages	17,127	11,699	5,428	2,815	68	32	16
15 and under	20	-	20	1	-	100	5
16	39	1	38	7	3	97	18
17	93	3	90	14	3	97	15
18	193	21	172	29	11	89	15
19	295	34	261	64	12	88	22
Under 20	640	59	581	115	9	91	18
20	316	46	270	82	15	85	26
21	359	70	289	101	19	81	28
22	392	92	300	133	23	77	34
23	440	106	334	166	24	76	38
24	532	180	352	185	34	66	35
20-24	2,039	494	1,545	667	24	76	33
25	597	253	344	196	42	58	33
26	694	352	342	194	51	49	28
27	828	449	379	224	54	46	27
28	880	585	295	174	66	34	20
29	976	744	232	150	76	24	15
25-29	3,975	2,383	1,592	938	60	40	24
30	1,054	839	215	123	80	20	12
31	1,164	929	235	149	80	20	13
32	1,268	1,053	215	140	83	17	11
33	1,283	1,100	183	120	86	14	9
34	1,140	983	157	100	86	14	9
30-34	5,909	4,904	1,005	632	83	17	11
35	1,079	921	158	102	85	15	9
36	967	834	133	91	86	14	9
37	729	628	101	70	86	14	10
38	561	479	82	44	85	15	8
39	448	365	83	53	81	19	12
35-39	3,784	3,227	557	360	85	15	10
40 and over	775	629	146	101	81	19	13
Age not stated	5	3	2	2	60	40	40

Table 6 Number and percentage of births registered within and outside marriage, classified by area of residence of mother

Area of residence	Total	Married parents	Unmarried Parents		% to married parents	% to unmarried parents	
			Total	Same address		Total	Same address
	Number				Percentage		
STATE	17,127	11,699	5,428	2,815	68	32	16
LEINSTER	9,576	6,332	3,244	1,602	66	34	17
Carlow	221	141	80	43	64	36	19
Dublin City	1,702	922	780	301	54	46	18
South Dublin	1,140	687	453	172	60	40	15
Fingal	1,298	912	386	216	70	30	17
Dun Laoghaire Rathdown	643	478	165	78	74	26	12
Kildare	890	666	224	131	75	25	15
Kilkenny	321	247	74	42	77	23	13
Laois	298	209	89	63	70	30	21
Longford	144	103	41	15	72	28	10
Louth	404	246	158	84	61	39	21
Meath	838	600	238	160	72	28	19
Offaly	277	196	81	45	71	29	16
Westmeath	313	221	92	44	71	29	14
Wexford	544	338	206	115	62	38	21
Wicklow	543	366	177	93	67	33	17
MUNSTER	4,655	3,242	1,413	767	70	30	16
Clare	414	301	113	66	73	27	16
Cork City	354	187	167	67	53	47	19
Cork County	1,586	1,240	346	201	78	22	13
Kerry	498	351	147	88	70	30	18
Limerick City	200	92	108	35	46	54	18
Limerick County	513	376	137	88	73	27	17
North Tipperary	315	214	101	63	68	32	20
South Tipperary	299	191	108	50	64	36	17
Waterford City	210	102	108	59	49	51	28
Waterford County	266	188	78	50	71	29	19
CONNACHT	1,856	1,366	490	288	74	26	16
Galway City	266	170	96	49	64	36	18
Galway County	647	500	147	98	77	23	15
Leitrim	118	88	30	23	75	25	19
Mayo	405	300	105	57	74	26	14
Roscommon	190	146	44	23	77	23	12
Sligo	230	162	68	38	70	30	17
ULSTER (PART OF)	1,040	759	281	158	73	27	15
Cavan	289	221	68	37	76	24	13
Donegal	551	385	166	91	70	30	17
Monaghan	200	153	47	30	77	23	15
REGIONAL AUTHORITIES:							
Border	1,792	1,255	537	303	70	30	17
Midland	1,032	729	303	167	71	29	16
West	1,508	1,116	392	227	74	26	15
Dublin	4,783	2,999	1,784	767	63	37	16
Mid-East	2,271	1,632	639	384	72	28	17
Mid-West	1,442	983	459	252	68	32	17
South-East	1,861	1,207	654	359	65	35	19
South-West	2,438	1,778	660	356	73	27	15

Table 7 Births registered, classified by area of residence and age of mother

Area of residence	Total	Under 20	20-24	25-29	30-34	35-39	40 and over	Age not stated	Average age of mother at maternity	
									Total	First
STATE	17,127	640	2,039	3,975	5,909	3,784	775	5	31.2	28.8
LEINSTER	9,576	399	1,183	2,212	3,295	2,077	409	1	31.0	28.7
Carlow	221	13	26	64	72	42	4	-	30.3	28.4
Dublin City	1,702	96	278	404	495	356	72	1	30.3	28.3
South Dublin	1,140	65	164	264	379	218	50	-	30.5	27.9
Fingal	1,298	54	137	288	503	272	44	-	31.1	29.1
Dun Laoghaire Rathdown	643	16	46	91	232	212	46	-	33.0	30.9
Kildare	890	27	91	184	344	216	28	-	31.6	29.1
Kilkenny	321	4	31	71	119	72	24	-	32.1	29.4
Laois	298	11	46	79	95	60	7	-	30.4	27.3
Longford	144	8	16	37	52	25	6	-	30.5	27.6
Louth	404	26	60	111	125	70	12	-	29.9	26.9
Meath	838	14	78	209	323	179	35	-	31.5	29.5
Offaly	277	14	29	71	90	62	11	-	30.9	28.4
Westmeath	313	17	42	78	103	60	13	-	30.6	27.6
Wexford	544	19	70	136	190	101	28	-	30.8	27.8
Wicklow	543	15	69	125	173	132	29	-	31.4	29.3
MUNSTER	4,655	161	508	1,098	1,608	1,061	216	3	31.3	29.1
Clare	414	9	39	96	139	109	22	-	31.9	29.4
Cork City	354	26	47	119	93	56	13	-	29.5	27.2
Cork County	1,586	37	124	335	613	400	74	3	32.1	30.1
Kerry	498	15	58	121	151	122	31	-	31.5	29.3
Limerick City	200	18	45	56	43	31	7	-	28.7	25.4
Limerick County	513	10	59	127	186	111	20	-	31.3	29.8
North Tipperary	315	14	35	67	119	67	13	-	31.2	28.2
South Tipperary	299	11	41	66	106	66	9	-	30.9	29.0
Waterford City	210	17	38	59	56	33	7	-	29.3	26.1
Waterford County	266	4	22	52	102	66	20	-	32.3	30.1
CONNACHT	1,856	50	239	394	639	430	103	1	31.5	29.1
Galway City	266	10	57	65	74	50	10	-	29.9	28.2
Galway County	647	15	58	125	252	149	47	1	32.2	29.8
Leitrim	118	4	17	27	40	22	8	-	31.1	28.6
Mayo	405	11	48	88	142	104	12	-	31.5	29.4
Roscommon	190	5	18	44	58	56	9	-	31.9	28.0
Sligo	230	5	41	45	73	49	17	-	31.2	28.4
ULSTER (PART OF)	1,040	30	109	271	367	216	47	-	31.2	28.6
Cavan	289	8	28	76	98	64	15	-	31.4	29.0
Donegal	551	15	67	154	188	101	26	-	30.8	28.0
Monaghan	200	7	14	41	81	51	6	-	31.8	29.7
REGIONAL AUTHORITIES:										
Border	1,792	65	227	454	605	357	84	-	31.0	28.4
Midland	1,032	50	133	265	340	207	37	-	30.6	27.7
West	1,508	41	181	322	526	359	78	1	31.4	28.8
Dublin	4,783	231	625	1,047	1,609	1,058	212	1	31.2	29.1
Mid-East	2,271	56	238	518	840	527	92	-	31.5	29.3
Mid-West	1,442	51	178	346	487	318	62	-	30.8	28.2
South-East	1,861	68	228	448	645	380	92	-	30.9	28.5
South-West	2,438	78	229	575	857	578	118	3	31.0	28.9

Table 8 Births registered outside marriage, classified by area of residence and age of mother

Area of residence	Total	Under 25	25-29	30-34	35-39	40 and over	Age not stated	Average age of mother at maternity	
								Total	First
STATE	5,428	2,126	1,592	1,005	557	146	2	27.4	25.5
LEINSTER	3,244	1,255	934	626	346	83	-	27.5	25.5
Carlow	80	30	26	14	9	1	-	27.2	25.0
Dublin City	780	305	218	149	92	16	-	27.5	25.9
South Dublin	453	188	131	89	33	12	-	26.9	24.5
Fingal	386	150	105	89	36	6	-	27.3	25.7
Dun Laoghaire Rathdown	165	48	38	30	38	11	-	29.7	28.2
Kildare	224	92	61	41	24	6	-	27.4	24.6
Kilkenny	74	26	19	19	9	1	-	28.4	25.7
Laois	89	42	23	13	10	1	-	26.9	24.4
Longford	41	16	15	8	1	1	-	26.2	23.2
Louth	158	70	56	23	9	-	-	26.0	23.7
Meath	238	69	81	56	26	6	-	28.4	26.9
Offaly	81	33	27	13	8	-	-	26.5	24.7
Westmeath	92	41	22	12	13	4	-	27.1	23.9
Wexford	206	76	62	41	19	8	-	27.7	24.9
Wicklow	177	69	50	29	19	10	-	27.9	27.0
MUNSTER	1,413	544	441	252	134	41	1	27.3	25.4
Clare	113	35	42	19	12	5	-	28.0	26.1
Cork City	167	63	63	26	11	4	-	26.6	24.9
Cork County	346	132	100	66	34	13	1	27.5	25.8
Kerry	147	53	45	29	14	6	-	27.9	25.9
Limerick City	108	55	26	13	12	2	-	26.2	23.0
Limerick County	137	49	46	27	13	2	-	27.7	27.2
North Tipperary	101	43	30	16	10	2	-	26.9	24.2
South Tipperary	108	44	34	16	12	2	-	27.3	25.3
Waterford City	108	46	31	21	7	3	-	26.8	24.4
Waterford County	78	24	24	19	9	2	-	28.5	26.5
CONNACHT	490	211	129	78	53	18	1	27.3	25.7
Galway City	96	41	28	15	11	1	-	27.1	26.8
Galway County	147	54	37	31	14	10	1	28.2	26.3
Leitrim	30	17	9	2	1	1	-	25.4	24.1
Mayo	105	44	29	15	15	2	-	27.6	26.1
Roscommon	44	18	14	5	6	1	-	26.8	23.9
Sligo	68	37	12	10	6	3	-	26.5	24.1
ULSTER (PART OF)	281	116	88	49	24	4	-	26.8	25.0
Cavan	68	26	28	13	1	-	-	26.1	24.5
Donegal	166	74	50	24	14	4	-	26.6	24.9
Monaghan	47	16	10	12	9	-	-	28.2	26.0
REGIONAL AUTHORITIES:									
Border	537	240	165	84	40	8	-	26.5	24.5
Midland	303	132	87	46	32	6	-	26.7	24.0
West	392	157	108	66	46	14	1	27.4	25.8
Dublin	1,784	691	492	357	199	45	-	27.9	26.1
Mid-East	639	230	192	126	69	22	-	27.9	26.2
Mid-West	459	182	144	75	47	11	-	27.2	25.1
South-East	654	246	196	130	65	17	-	27.6	25.3
South-West	660	248	208	121	59	23	1	27.3	25.5

Table 9 Deaths registered by county of residence of deceased

Area of residence	Total	Male	Female	Rate ^(a)
STATE	6,902	3,493	3,409	6.4
LEINSTER	3,425	1,727	1,698	5.8
Carlow	90	42	48	7.0
Dublin City	1,037	482	555	8.0
South Dublin	243	129	114	3.8
Fingal	207	113	94	3.4
Dun Laoghaire Rathdown	305	140	165	6.1
Kildare	206	115	91	4.3
Kilkenny	131	73	58	5.8
Laois	91	50	41	5.3
Longford	83	44	39	9.4
Louth	193	91	102	6.8
Meath	206	100	106	4.9
Offaly	111	53	58	6.1
Westmeath	149	90	59	7.3
Wexford	193	108	85	5.7
Wicklow	180	97	83	5.6
MUNSTER	2,063	1,046	1,017	6.9
Clare	193	103	90	6.8
Cork City	278	138	140	9.1
Cork County	498	249	249	5.4
Kerry	277	146	131	7.7
Limerick City	94	47	47	7.0
Limerick County	262	131	131	7.8
North Tipperary	158	73	85	9.4
South Tipperary	131	71	60	6.2
Waterford City	66	35	31	5.6
Waterford County	106	53	53	6.7
CONNACHT	916	461	455	7.1
Galway City	48	23	25	2.6
Galway County	308	144	164	7.6
Leitrim	54	25	29	7.3
Mayo	255	133	122	8.0
Roscommon	115	65	50	7.6
Sligo	136	71	65	8.7
ULSTER (PART OF)	498	259	239	7.3
Cavan	137	70	67	8.4
Donegal	262	137	125	7.0
Monaghan	99	52	47	6.9
REGIONAL AUTHORITIES:				
Border	881	446	435	7.3
Midland	434	237	197	6.7
West	726	365	361	6.9
Dublin	1,792	864	928	5.9
Mid-East	592	312	280	4.8
Mid-West	707	354	353	7.8
South-East	717	382	335	6.0
South-West	1,053	533	520	6.7

^(a) Deaths per year per 1,000 population. Annual rates based on estimated 2007 population.

Table 10 Deaths registered by cause of death and county of residence of deceased

Area of residence	Total deaths	Malignant Neoplasms	Diseases of the Circulatory system	Diseases of the Respiratory system	External causes	All other causes
STATE	6,902	1,930	2,432	895	420	1,225
LEINSTER	3,425	1,011	1,115	435	233	631
Carlow	90	32	27	10	6	15
Dublin City	1,037	292	341	136	75	193
South Dublin	243	75	81	26	18	43
Fingal	207	64	59	30	16	38
Dun Laoghaire Rathdown	305	118	85	35	14	53
Kildare	206	56	69	18	23	40
Kilkenny	131	39	40	15	9	28
Laois	91	25	27	21	7	11
Longford	83	19	30	12	3	19
Louth	193	50	79	27	2	35
Meath	206	50	76	27	13	40
Offaly	111	37	34	19	8	13
Westmeath	149	52	46	13	12	26
Wexford	193	51	70	21	7	44
Wicklow	180	51	51	25	20	33
MUNSTER	2,063	535	780	283	115	350
Clare	193	38	70	32	18	35
Cork City	278	61	106	33	26	52
Cork County	498	135	204	46	37	76
Kerry	277	69	103	42	9	54
Limerick City	94	27	29	17	6	15
Limerick County	262	71	97	45	8	41
North Tipperary	158	43	68	19	7	21
South Tipperary	131	38	46	22	3	22
Waterford City	66	21	20	10	1	14
Waterford County	106	32	37	17	0	20
CONNACHT	916	268	331	106	50	161
Galway City	48	13	11	9	4	11
Galway County	308	95	118	32	13	50
Leitrim	54	18	18	10	0	8
Mayo	255	64	100	27	11	53
Roscommon	115	37	40	11	12	15
Sligo	136	41	44	17	10	24
ULSTER (PART OF)	498	116	206	71	22	83
Cavan	137	36	65	17	2	17
Donegal	262	64	101	39	12	46
Monaghan	99	16	40	15	8	20
REGIONAL AUTHORITIES:						
Border	881	225	347	125	34	150
Midland	434	133	137	65	30	69
West	726	209	269	79	40	129
Dublin	1,792	549	566	227	123	327
Mid-East	592	157	196	70	56	113
Mid-West	707	179	264	113	39	112
South-East	717	213	240	95	26	143
South-West	1,053	265	413	121	72	182

Table 11 Deaths registered classified by cause and age group

Cause of Death	65 COD Code	ICD-10 Code	Total Deaths	Age Group										
				Under 1	1-4	5-14	15-24	25-34	35-44	45-54	55-64	65-74	75-84	85 and over
Total deaths	0	A00-Y89	6,902	60	18	17	89	118	171	341	694	1,196	2,255	1,943
Infectious and parasitic diseases:-	1	A00-B99	55	2	4	1	-	2	3	-	5	6	20	12
Tuberculosis	2	A15-A19,B90	9	-	-	-	-	-	1	-	-	2	6	-
Meningococcal infection	3	A39	4	-	4	-	-	-	-	-	-	-	-	-
AIDS (HIV Disease)	4	B20-B24	2	-	-	-	-	1	1	-	-	-	-	-
Viral Hepatitis	5	B15-B19	2	-	-	-	-	1	-	-	1	-	-	-
Other infectious and parasitic diseases			38	2	-	1	-	-	1	-	4	4	14	12
Neoplasms	6	C00-D48	1,983	1	2	5	2	11	35	131	319	559	632	286
Malignant Neoplasms of the:-	7	C00-C97	1,930	1	2	5	2	10	34	130	313	550	612	271
Lip, oral cavity, pharynx	8	C00-C14	33	-	-	-	-	-	-	2	11	9	8	3
Oesophagus	9	C15	76	-	-	-	-	-	3	4	14	19	22	14
Stomach	10	C16	83	-	-	-	-	-	3	8	8	25	27	12
Colon	11	C18	141	-	-	-	-	-	-	6	17	34	54	30
Rectum and anus	12	C19-C21	103	-	-	-	-	-	1	9	19	32	33	9
Liver and the intrahepatic bile ducts	13	C22	45	-	-	-	-	-	1	2	7	16	16	3
Pancreas	14	C25	130	-	-	-	-	-	1	4	24	36	47	18
Larynx and trachea/bronchus /lung	15	C32-C34	413	-	-	-	-	-	4	28	77	144	127	33
Skin	16	C43	20	-	-	-	-	1	1	2	3	7	3	3
Breast	17	C50	133	-	-	-	-	1	8	21	26	30	29	18
Cervix uteri	18	C53	28	-	-	-	-	1	2	9	3	4	8	1
Other parts of uterus	19	C54-C55	21	-	-	-	-	-	-	1	4	8	4	4
Ovary	20	C56	64	-	-	-	1	-	1	5	10	22	19	6
Prostate	21	C61	113	-	-	-	-	-	-	2	5	32	45	29
Kidney	22	C64	42	-	-	-	-	1	1	4	3	13	16	4
Bladder	23	C67	34	-	-	-	-	-	-	2	3	5	13	11
Lymph/haematopoietic tissue	24	C81-C96	155	-	-	1	-	2	3	7	25	42	47	28
Other malignant neoplasms			296	1	2	4	1	4	5	14	54	72	94	45
Diseases of the blood and blood-forming organs, immunological disorders	25	D50-D89	22	-	-	-	-	-	1	1	-	8	6	6
Endocrine, Nutritional and metabolic diseases	26	E00-E90	167	-	-	-	3	3	10	7	10	27	59	48
Diabetes mellitus	27	E10-E14	117	-	-	-	-	1	4	5	5	22	45	35
Mental and behavioural disorders	28	F00-F99	137	-	-	-	1	4	1	6	3	9	45	68
Alcohol abuse (including alcoholic psychosis)	29	F10	14	-	-	-	-	2	1	6	2	2	1	-
Drug dependence, toxicomania	30	F11-F16,F18-F19	3	-	-	-	1	2	-	-	-	-	-	-
Diseases of the nervous system and the sense organs	31	G00-H95	200	2	2	2	4	3	7	7	12	28	76	57
Meningitis	32	G00-G03	3	1	-	-	-	-	-	-	1	-	-	1
Diseases of the Circulatory System:-	33	I00-I99	2,432	1	-	2	5	7	33	85	184	348	873	894
Ischaemic heart disease	34	I20-I25	1,307	-	-	-	-	1	17	52	124	206	462	445
<i>of which: (Acute myocardial infarction)</i>		<i>I21</i>	<i>674</i>	-	-	-	-	<i>1</i>	<i>14</i>	<i>23</i>	<i>64</i>	<i>100</i>	<i>239</i>	<i>233</i>
Other heart disease	35	I30-I33,I39-I52	304	1	-	1	4	-	6	7	17	29	103	136
Cerebrovascular disease	36	I60-I69	507	-	-	-	-	4	8	17	18	52	198	210
Other diseases of circulatory system			314	-	-	1	1	2	2	9	25	61	110	103

Diseases of the Respiratory system	37	J00-J99	895	1	-	1	1	1	4	18	54	104	338	373
Influenza	38	J10-J11	-	-	-	-	-	-	-	-	-	-	-	-
Pneumonia	39	J12-J19	341	-	-	1	1	-	1	13	17	29	101	178
Chronic Lower respiratory disease	40	J40-J47	378	-	-	-	-	-	2	2	29	51	179	115
of which: Asthma	41	J45-J46	15	-	-	-	-	-	1	-	3	4	3	4
Other diseases of the respiratory system			176	1	-	-	-	1	1	3	8	24	58	80
Diseases of the Digestive system	42	K00-K93	267	1	-	-	-	1	11	28	40	47	80	59
Ulcer of stomach, duodenum and jejunum	43	K25-K28	22	-	-	-	-	-	-	-	4	3	7	8
Chronic liver disease	44	K70,K73-K74	64	-	-	-	-	-	7	19	17	12	6	3
Other diseases of the digestive system			181	1	-	-	-	1	4	9	19	32	67	48
Diseases of the skin and subcutaneous tissue	45	L00-L99	17	-	-	-	-	-	-	-	2	3	6	6
Diseases of the musculoskeletal system/connective tissue	46	M00-M99	59	1	-	-	-	-	-	3	5	10	16	24
Rheumatoid arthritis and osteoarthritis	47	M05-M06,M15-M19	20	-	-	-	-	-	-	1	1	2	5	11
Diseases of the genitourinary system	48	N00-N99	153	-	-	-	1	1	-	-	6	16	62	67
Diseases of the kidney and ureter	49	N00-N29	106	-	-	-	1	1	-	-	6	11	47	40
Complications of pregnancy, childbirth and puerperium	50	O00-O99	1	-	-	-	-	-	-	1	-	-	-	-
Certain conditions originating in the perinatal period¹	51	P00-P96	15	15	-	-	-	-	-	-	-	-	-	-
Congenital malformations and chromosomal abnormalities	52	Q00-Q99	48	25	4	2	2	3	4	1	4	1	1	1
Congenital malformations of the:-														
Nervous system	53	Q00-Q07	2	1	-	-	1	-	-	-	-	-	-	-
Circulatory system	54	Q20-Q28	15	7	2	-	1	1	1	1	1	-	-	1
Symptoms, signs, abnormal findings, ill-defined causes	55	R00-R99	31	10	2	-	-	2	-	1	4	2	1	9
Sudden infant death syndrome	56	R95	12	10	2	-	-	-	-	-	-	-	-	-
Unknown and unspecified causes	57	R96-R99	6	-	-	-	-	1	-	-	3	2	-	-
External causes of injury and poisoning	58	V01-Y89	420	1	4	4	70	80	62	52	46	28	40	33
Accidents	59	V01-X59	258	1	4	3	37	41	32	29	28	18	33	32
of which: Transport accidents	60	V01-V99	78	1	2	2	19	16	10	8	7	3	10	-
Accidental falls	61	W00-W19	62	-	-	-	1	4	6	8	5	5	9	24
Accidental poisoning	62	X40-X49	62	-	-	-	8	18	11	12	8	5	-	-
other accidents			56	-	2	1	9	3	5	1	8	5	14	8
Suicide and intentional self harm	63	X60-X84	94	-	-	-	22	21	18	14	11	7	1	-
Homicide/assault	64	X85-Y09	10	-	-	-	1	6	1	-	2	-	-	-
Events of undetermined intent	65	Y10-Y34	52	-	-	1	10	12	11	9	4	1	4	-
All other external causes			6	-	-	-	-	-	-	-	1	2	2	1

¹ Stillbirths not included.

Table 12 Male deaths registered classified by cause and age group

Cause of Death	65 COD Code	ICD-10 Code	Total Males	Age Group										
				Under 1	1-4	5-14	15-24	25-34	35-44	45-54	55-64	65-74	75-84	85 and over
Total Male Deaths	0	A00-Y89	3,493	30	14	8	68	83	109	198	441	702	1,150	690
Infectious and parasitic diseases:-	1	A00-B99	29	-	1	-	-	1	3	-	3	5	11	5
Tuberculosis	2	A15-A19,B90	5	-	-	-	-	-	1	-	-	1	3	-
Meningococcal infection	3	A39	1	-	1	-	-	-	-	-	-	-	-	-
AIDS (HIV Disease)	4	B20-B24	2	-	-	-	-	1	1	-	-	-	-	-
Viral Hepatitis	5	B15-B19	1	-	-	-	-	-	-	-	1	-	-	-
Other infectious and parasitic diseases			20	-	-	-	-	-	1	-	2	4	8	5
Neoplasms	6	C00-D48	1,036	1	1	2	-	2	14	59	180	316	325	136
Malignant Neoplasms of the:-	7	C00-C97	1,013	1	1	2	-	2	14	58	178	310	317	130
Lip, oral cavity, pharynx	8	C00-C14	22	-	-	-	-	-	-	1	9	6	4	2
Oesophagus	9	C15	43	-	-	-	-	-	2	3	10	12	10	6
Stomach	10	C16	57	-	-	-	-	-	2	5	6	18	20	6
Colon	11	C18	75	-	-	-	-	-	-	3	10	20	32	10
Rectum and anus	12	C19-C21	58	-	-	-	-	-	1	3	14	18	19	3
Liver and the intrahepatic bile ducts	13	C22	25	-	-	-	-	-	1	2	4	8	8	2
Pancreas	14	C25	61	-	-	-	-	-	1	3	14	21	15	7
Larynx and trachea/bronchus /lung	15	C32-C34	257	-	-	-	-	-	2	18	52	91	76	18
Skin	16	C43	15	-	-	-	-	1	1	2	2	5	2	2
Breast	17	C50	-	-	-	-	-	-	-	-	-	-	-	-
Cervix uteri	18	C53	-	-	-	-	-	-	-	-	-	-	-	-
Other parts of uterus	19	C54-C55	-	-	-	-	-	-	-	-	-	-	-	-
Ovary	20	C56	-	-	-	-	-	-	-	-	-	-	-	-
Prostate	21	C61	113	-	-	-	-	-	-	2	5	32	45	29
Kidney	22	C64	26	-	-	-	-	1	1	4	-	9	9	2
Bladder	23	C67	26	-	-	-	-	-	-	1	2	4	10	9
Lymph/haematopoietic tissue	24	C81-C96	81	-	-	-	-	-	1	4	12	25	22	17
Other malignant neoplasms			154	1	1	2	-	-	2	7	38	41	45	17
Diseases of the blood and blood-forming organs, immunological disorders	25	D50-D89	14	-	1	-	-	-	2	1	2	2	3	3
Endocrine, Nutritional and metabolic diseases	26	E00-E90	85	-	-	-	1	2	5	5	9	12	32	19
Diabetes mellitus	27	E10-E14	61	-	-	-	-	1	1	4	5	9	26	15
Mental and behavioural disorders	28	F00-F99	48	-	-	-	-	2	1	2	2	4	18	19
Alcohol abuse (including alcoholic psychosis)	29	F10	8	-	-	-	-	-	1	2	2	2	1	-
Drug dependence, toxicomania	30	F11-F16,F18-F19	2	-	-	-	-	2	-	-	-	-	-	-
Diseases of the nervous system and the sense organs	31	G00-H95	96	1	2	1	3	2	3	4	8	15	39	18
Meningitis	32	G00-G03	-	-	-	-	-	-	-	-	-	-	-	-
Diseases of the Circulatory System:-	33	I00-I99	1,209	1	-	1	4	4	19	58	149	230	443	300
Ischaemic heart disease	34	I20-I25	736	-	-	-	-	1	11	45	108	151	262	158
of which: (Acute myocardial infarction)		I21	367	-	-	-	-	1	9	18	56	76	125	82
Other heart disease	35	I30-I33,I39-I52	139	1	-	1	3	-	4	6	13	18	42	51
Cerebrovascular disease	36	I60-I69	197	-	-	-	-	2	3	3	12	27	84	66
Other diseases of circulatory system			137	-	-	-	1	1	1	4	16	34	55	25

Diseases of the Respiratory system	37	J00-J99	408	-	-	1	-	-	2	10	28	51	179	137
Influenza	38	J10-J11	-	-	-	-	-	-	-	-	-	-	-	-
Pneumonia	39	J12-J19	132	-	-	1	-	-	1	7	9	14	53	47
Chronic Lower respiratory disease	40	J40-J47	185	-	-	-	-	-	1	1	14	21	95	53
<i>of which: Asthma</i>	41	J45-J46	3	-	-	-	-	-	-	-	1	-	1	1
Other diseases of the respiratory system			91	-	-	-	-	-	-	2	5	16	31	37
Diseases of the Digestive system	42	K00-K93	134	1	-	-	-	1	9	19	21	30	34	19
Ulcer of stomach, duodenum and jejunum	43	K25-K28	12	-	-	-	-	-	-	-	1	2	6	3
Chronic liver disease	44	K70,K73-K74	43	-	-	-	-	-	6	15	11	6	5	-
Other diseases of the digestive system			79	1	-	-	-	1	3	4	9	22	23	16
Diseases of the skin and subcutaneous tissue	45	L00-L99	5	-	-	-	-	-	-	-	2	1	2	-
Diseases of the musculoskeletal system/connective tissue	46	M00-M99	20	-	-	-	-	-	-	3	2	3	7	5
Rheumatoid arthritis and osteoarthritis	47	M05-M06,M15-M19	5	-	-	-	-	-	-	1	1	-	2	1
Diseases of the genitourinary system	48	N00-N99	68	-	-	-	-	1	-	-	3	7	38	19
Diseases of the kidney and ureter	49	N00-N29	49	-	-	-	-	1	-	-	3	4	30	11
Complications of pregnancy, childbirth and puerperium	50	O00-O99	-	-	-	-	-	-	-	-	-	-	-	-
Certain conditions originating in the perinatal period¹	51	P00-P96	8	8	-	-	-	-	-	-	-	-	-	-
Congenital malformations and chromosomal abnormalities	52	Q00-Q99	26	11	4	1	1	2	3	0	2	1	-	1
Congenital malformations of the:-														
Nervous system	53	Q00-Q07	-	-	-	-	-	-	-	-	-	-	-	-
Circulatory system	54	Q20-Q28	7	1	2	-	1	1	1	-	-	-	-	1
Symptoms, signs, abnormal findings, ill-defined causes	55	R00-R99	17	6	2	-	0	1	-	1	3	1	-	3
Sudden infant death syndrome	56	R95	8	6	2	-	-	-	-	-	-	-	-	-
Unknown and unspecified causes	57	R96-R99	3	-	-	-	-	-	-	-	2	1	-	-
External causes of injury and poisoning	58	V01-Y89	289	1	4	2	59	65	50	36	29	20	16	7
Accidents	59	V01-X59	161	1	4	1	30	33	27	19	15	12	12	7
<i>of which: Transport accidents</i>	60	V01-V99	57	1	2	-	16	14	9	6	4	1	4	-
Accidental falls	61	W00-W19	32	-	-	-	1	4	5	6	4	4	2	6
Accidental poisoning	62	X40-X49	39	-	-	-	6	12	8	6	4	3	-	-
<i>other accidents</i>			33	-	2	1	7	3	5	1	3	4	6	1
Suicide and intentional self harm	63	X60-X84	79	-	-	-	20	18	13	12	9	6	1	-
Homicide/assault	64	X85-Y09	9	-	-	-	1	5	1	-	2	-	-	-
Events of undetermined intent	65	Y10-Y34	38	-	-	1	8	9	9	5	3	1	2	-
All other external causes			2	-	-	-	-	-	-	-	-	1	1	-

¹ Stillbirths not included.

Table 13 Female deaths registered classified by cause and age group

Cause of Death	65 COD Code	ICD-10 Code	Total Females	Age Group										
				Under 1	1-4	5-14	15-24	25-34	35-44	45-54	55-64	65-74	75-84	85 and over
Total Female Deaths	0	A00-Y89	3,409	30	4	9	21	35	62	143	253	494	1,105	1,253
Infectious and parasitic diseases:-	1	A00-B99	26	2	3	1	-	1	-	-	2	1	9	7
Tuberculosis	2	A15-A19,B90	4	-	-	-	-	-	-	-	-	1	3	-
Meningococcal infection	3	A39	3	-	3	-	-	-	-	-	-	-	-	-
AIDS (HIV Disease)	4	B20-B24	-	-	-	-	-	-	-	-	-	-	-	-
Viral Hepatitis	5	B15-B19	1	-	-	-	-	1	-	-	-	-	-	-
Other infectious and parasitic diseases			18	2	-	1	-	-	-	-	2	-	6	7
Neoplasms	6	C00-D48	947	-	1	3	2	9	21	72	139	243	307	150
Malignant Neoplasms of the:-	7	C00-C97	917	-	1	3	2	8	20	72	135	240	295	141
Lip, oral cavity, pharynx	8	C00-C14	11	-	-	-	-	-	-	1	2	3	4	1
Oesophagus	9	C15	33	-	-	-	-	-	1	1	4	7	12	8
Stomach	10	C16	26	-	-	-	-	-	1	3	2	7	7	6
Colon	11	C18	66	-	-	-	-	-	-	3	7	14	22	20
Rectum and anus	12	C19-C21	45	-	-	-	-	-	-	6	5	14	14	6
Liver and the intrahepatic bile ducts	13	C22	20	-	-	-	-	-	-	-	3	8	8	1
Pancreas	14	C25	69	-	-	-	-	-	-	1	10	15	32	11
Larynx and trachea/bronchus /lung	15	C32-C34	156	-	-	-	-	-	2	10	25	53	51	15
Skin	16	C43	5	-	-	-	-	-	-	-	1	2	1	1
Breast	17	C50	133	-	-	-	-	1	8	21	26	30	29	18
Cervix uteri	18	C53	28	-	-	-	-	1	2	9	3	4	8	1
Other parts of uterus	19	C54-C55	21	-	-	-	-	-	-	1	4	8	4	4
Ovary	20	C56	64	-	-	-	1	-	1	5	10	22	19	6
Prostate	21	C61	-	-	-	-	-	-	-	-	-	-	-	-
Kidney	22	C64	16	-	-	-	-	-	-	-	3	4	7	2
Bladder	23	C67	8	-	-	-	-	-	-	1	1	1	3	2
Lymph/haematopoietic tissue	24	C81-C96	74	-	-	1	-	2	2	3	13	17	25	11
Other malignant neoplasms			142	-	1	2	1	4	3	7	16	31	49	28
Diseases of the blood and blood-forming organs, immunological disorders	25	D50-D89	7	-	-	-	-	-	1	-	-	2	-	4
Endocrine, Nutritional and metabolic diseases	26	E00-E90	82	-	-	-	2	1	5	2	1	15	27	29
Diabetes mellitus	27	E10-E14	56	-	-	-	-	-	3	1	-	13	19	20
Mental and behavioural disorders	28	F00-F99	89	-	-	-	1	2	-	4	1	5	27	49
Alcohol abuse (including alcoholic psychosis)	29	F10	6	-	-	-	-	2	-	4	-	-	-	-
Drug dependence, toxicomania	30	F11-F16,F18-F19	1	-	-	-	1	-	-	-	-	-	-	-
Diseases of the nervous system and the sense organs	31	G00-H95	104	1	-	1	1	1	4	3	4	13	37	39
Meningitis	32	G00-G03	3	1	-	-	-	-	-	-	1	-	-	1
Diseases of the Circulatory System:-	33	I00-I99	1,223	-	-	1	1	3	14	27	35	118	430	594
Ischaemic heart disease	34	I20-I25	571	-	-	-	-	-	6	7	16	55	200	287
<i>of which: (Acute myocardial infarction)</i>		<i>I21</i>	<i>307</i>	<i>-</i>	<i>-</i>	<i>-</i>	<i>-</i>	<i>-</i>	<i>5</i>	<i>5</i>	<i>8</i>	<i>24</i>	<i>114</i>	<i>151</i>
Other heart disease	35	I30-I33,I39-I52	165	-	-	-	1	-	2	1	4	11	61	85
Cerebrovascular disease	36	I60-I69	310	-	-	-	-	2	5	14	6	25	114	144
Other diseases of circulatory system			177	-	-	1	-	1	1	5	9	27	55	78

Diseases of the Respiratory system	37	J00-J99	487	1	-	-	1	1	2	8	26	53	159	236
Influenza	38	J10-J11	-	-	-	-	-	-	-	-	-	-	-	-
Pneumonia	39	J12-J19	209	-	-	-	1	-	-	6	8	15	48	131
Chronic Lower respiratory disease	40	J40-J47	193	-	-	-	-	-	1	1	15	30	84	62
of which: <i>Asthma</i>	41	<i>J45-J46</i>	12	-	-	-	-	-	1	-	2	4	2	3
Other diseases of the respiratory system			85	1	-	-	-	1	1	1	3	8	27	43
Diseases of the Digestive system	42	K00-K93	133	-	-	-	-	-	2	9	19	17	46	40
Ulcer of stomach, duodenum and jejunum	43	K25-K28	10	-	-	-	-	-	-	-	3	1	1	5
Chronic liver disease	44	K70,K73-K74	21	-	-	-	-	-	1	4	6	6	1	3
Other diseases of the digestive system			102	-	-	-	-	-	1	5	10	10	44	32
Diseases of the skin and subcutaneous tissue	45	L00-L99	12	-	-	-	-	-	-	-	-	2	4	6
Diseases of the musculoskeletal system/connective tissue	46	M00-M99	39	1	-	-	-	-	-	-	3	7	9	19
Rheumatoid arthritis and osteoarthritis	47	M05-M06,M15-M19	15	-	-	-	-	-	-	-	-	2	3	10
Diseases of the genitourinary system	48	N00-N99	85	-	-	-	1	-	-	-	3	9	24	48
Diseases of the kidney and ureter	49	N00-N29	57	-	-	-	1	-	-	-	3	7	17	29
Complications of pregnancy, childbirth and puerperium	50	O00-O99	1	-	-	-	-	-	-	1	-	-	-	-
Certain conditions originating in the perinatal period¹	51	P00-P96	7	7	-	-	-	-	-	-	-	-	-	-
Congenital malformations and chromosomal abnormalities	52	Q00-Q99	22	14	-	1	1	1	1	1	2	-	1	-
Congenital malformations of the:-														
Nervous system	53	Q00-Q07	2	1	-	-	1	-	-	-	-	-	-	-
Circulatory system	54	Q20-Q28	8	6	-	-	-	-	-	1	1	-	-	-
Symptoms, signs, abnormal findings, ill-defined causes	55	R00-R99	14	4	-	-	-	1	-	-	1	1	1	6
Sudden infant death syndrome	56	R95	4	4	-	-	-	-	-	-	-	-	-	-
Unknown and unspecified causes	57	R96-R99	3	-	-	-	-	1	-	-	1	1	-	-
External causes of injury and poisoning	58	V01-Y89	131	-	-	2	11	15	12	16	17	8	24	26
Accidents	59	V01-X59	97	-	-	2	7	8	5	10	13	6	21	25
of which: <i>Transport accidents</i>	60	<i>V01-V99</i>	21	-	-	2	3	2	1	2	3	2	6	-
<i>Accidental falls</i>	61	<i>W00-W19</i>	30	-	-	-	-	-	1	2	1	1	7	18
<i>Accidental poisoning</i>	62	<i>X40-X49</i>	23	-	-	-	2	6	3	6	4	2	-	-
<i>other accidents</i>			23	-	-	-	2	-	-	-	5	1	8	7
Suicide and intentional self harm	63	X60-X84	15	-	-	-	2	3	5	2	2	1	-	-
Homicide/assault	64	X85-Y09	1	-	-	-	-	1	-	-	-	-	-	-
Events of undetermined intent	65	Y10-Y34	14	-	-	-	2	3	2	4	1	-	2	-
All other external causes			4	-	-	-	-	-	-	-	1	1	1	1

¹ Stillbirths not included.

Table 14 Infant and neonatal mortality by area of residence of deceased

Area of residence	Infant mortality		Neonatal mortality	
	Number	Rate	Number	Rate
STATE	60	3.5	34	2.0
LEINSTER	38	4.0	18	1.9
Carlow	1	4.5	1	4.5
Dublin City	11	6.5	5	2.9
South Dublin	6	5.3	2	1.8
Fingal	2	1.5	0	0.0
Dun Laoghaire Rathdown	2	3.1	1	1.6
Kildare	5	5.6	3	3.4
Kilkenny	1	3.1	1	3.1
Laois	0	0.0	0	0.0
Longford	2	13.9	1	6.9
Louth	2	5.0	1	2.5
Meath	3	3.6	1	1.2
Offaly	0	0.0	0	0.0
Westmeath	1	3.2	1	3.2
Wexford	1	1.8	0	0.0
Wicklow	1	1.8	1	1.8
MUNSTER	15	3.2	11	2.4
Clare	2	4.8	2	4.8
Cork City	2	5.6	1	2.8
Cork County	7	4.4	4	2.5
Kerry	1	2.0	1	2.0
Limerick City	1	5.0	1	5.0
Limerick County	1	1.9	1	1.9
North Tipperary	0	0.0	0	0.0
South Tipperary	0	0.0	0	0.0
Waterford City	1	4.8	1	4.8
Waterford County	0	0.0	0	0.0
CONNACHT	6	3.2	4	2.2
Galway City	0	0.0	0	0.0
Galway County	1	1.5	1	1.5
Leitrim	0	0.0	0	0.0
Mayo	4	9.9	2	4.9
Roscommon	0	0.0	0	0.0
Sligo	1	4.3	1	4.3
ULSTER (PART OF)	1	1.0	1	1.0
Cavan	0	0.0	0	0.0
Donegal	1	1.8	1	1.8
Monaghan	0	0.0	0	0.0
REGIONAL AUTHORITIES:				
Border	4	2.2	3	1.7
Midland	3	2.9	2	1.9
West	5	3.3	3	2.0
Dublin	21	4.4	8	1.7
Mid-East	9	4.0	5	2.2
Mid-West	4	2.8	4	2.8
South-East	4	2.1	3	1.6
South-West	10	4.1	6	2.5

Infant mortality rates: Deaths of infants under one year per 1,000 live births, classified by area of residence of mother.

Neonatal mortality rates: Deaths of infants under 28 days per 1,000 live births, classified by area of residence of mother.

Infant and neonatal mortality rates in some areas, based on small numbers are subject to considerable fluctuation and caution should be exercised in their interpretation.

Appendix

Glossary of terms

NUTS III Regional Authority areas

Border, Midland, West, Dublin, Mid-East, Mid-West, South-East, South-West

Border: Cavan, Donegal, Leitrim, Louth, Monaghan, Sligo.

Midland: Laois, Longford, Offaly, Westmeath.

West: Galway City, Galway County, Mayo, Roscommon.

Dublin: Dublin City, South Dublin, Fingal, Dun Laoghaire-Rathdown.

Mid-East: Kildare, Meath, Wicklow.

Mid-West: Clare, Limerick City, Limerick County, North Tipperary.

South-East: Carlow, Kilkenny, South Tipperary, Waterford City, Waterford County, Wexford.

South-West: Cork City, Cork County, Kerry.

Causes of death Eurostat shortlist (August 1998)

Nr	Disease or external cause	ICD-9 Code	ICD-10 Code
00	All causes of death	001-E999	A00-Y89
01	Infectious and Parasitic Diseases:-	001-139,279.8	A00-B99
02	Tuberculosis	010-018,137	A15-A19,B90
03	Meningococcal Infection	036	A39
04	AIDS (HIV Disease)	042-044,279.8	B20-B24
05	Viral Hepatitis	070	B15-B19
	other Infectious and Parasitic Diseases	Rem (001-139)	Rem (A00-B99)
06	Neoplasms	140-239	C00-D48
07	Malignant Neoplasms of the:-	140-208	C00-C97
08	Lip, Oral Cavity, Pharynx	140-149	C00-C14
09	Oesophagus	150	C15
10	Stomach	151	C16
11	Colon	153	C18
12	Rectum and Anus	154	C19-C20-C21
13	Liver and the Intrahepatic Bile Ducts	155	C22
14	Pancreas	157	C25
15	Larynx and Trachea/Bronchus/Lung	161-162	C32-C34
16	Skin	172	C43
17	Breast	174-175	C50
18	Cervix Uteri	180	C53
19	Other Parts of the Uterus	179,182	C54-C55
20	Ovary	183.0	C56
21	Prostate	185	C61
22	Kidney	189.0	C64
23	Bladder	188	C67
24	Lymph/Haematopoietic Tissue	200-208	C81-C96
	other Malignant Neoplasms	Rem (140-208)	Rem. (C00-C97)
25	Diseases of the Blood and Blood-forming Organs, Immunological disorders ¹	279-289	D50-D89
26	Endocrine, Nutritional and Metabolic Diseases	240-278	E00-E90
27	Diabetes Mellitus	250	E10-E14
28	Mental and Behavioural Disorders	290-319	F00-F99
29	Alcohol abuse (including Alcoholic Psychosis)	291,303	F10
30	Drug Dependence, Toxicomania	304-305	F11-F16,F18-F19
31	Diseases of the Nervous System and the Sense Organs	320-389	G00-H95
32	Meningitis	320-322	G00-G03
33	Diseases of the Circulatory System:-	390-459	I00-I99
34	Ischaemic Heart Disease	410-414	I20-I25
	<i>(Acute Myocardial Infarction)</i>	410	I21
35	Other Heart Disease	420-423,425-429	I30-I33,I39-I52
36	Cerebrovascular Disease	430-438	I60-I69
	other Diseases of the Circulatory System	Rem (390-459)	Rem. (I00-I99)
37	Diseases of the Respiratory System	460-519	J00-J99
38	Influenza	487	J10-J11
39	Pneumonia	480-486	J12-J18
40	Chronic Lower Respiratory Disease	490-494,496	J40-J47
41	Asthma	493	J45-J46
	other Diseases of the Respiratory System	Rem (460-519)	Rem. (J00-J99)
42	Diseases of the Digestive System	520-579	K00-K93
43	Ulcer of Stomach, Duodenum and Jejunum	531-534	K25-K28
44	Chronic Liver Disease	571.0-571.9	K70,K73-K74
	other Diseases of the Digestive System	Rem (520-579)	Rem. (K00-K93)
45	Diseases of the Skin and Subcutaneous Tissue	680-709	L00-L99
46	Diseases of the Musculoskeletal System/Connective Tissue	710-739	M00-M99
47	Rheumatoid Arthritis and Osteoarthritis	714-715	M05-M06,M15-M19
48	Diseases of the Genitourinary System	580-629	N00-N99
49	Diseases of the Kidney and Ureter	580-594	N00-N29
50	Complications of Pregnancy, Childbirth and Puerperium	630-676	O00-O99
51	Certain Conditions Originating in the Perinatal Period (stillbirths not included)	760-779	P00-P96
52	Congenital Malformations and Chromosomal Abnormalities	740-759	Q00-Q99
53	Congenital malformations of the Nervous System	740-742	Q00-Q07
54	Congenital malformations of the Circulatory System	745-747	Q20-Q28
55	Symptoms, Signs, Abnormal Findings, Ill-defined Causes	780-799	R00-R99
56	Sudden Infant Death Syndrome	798.0	R95
57	Unknown and Unspecified Causes	798.1-9,799	R96-R99
	Injury and Poisoning	800-999	S00-T98
58	External Causes of Injury and Poisoning (included in the Foregoing)	E800-E999	V01-Y89
59	Accidents	E800-E929	V01-X59
60	Transport Accidents	E800-E848	V01-V99
	Road transport Accidents	E810-E829, E929.0	V01-V80,V87,V89,Y85
	Motor vehicle transport Accidents	E810-E819	
61	Accidental Falls	E880-E888	W00-W19
62	Accidental Poisoning	E850-E869	X40-X49
	other accidents	Rem (E800-E929)	Rem (V01-X59)
63	Suicide and Intentional Self Harm	E950-E959	X60-X84
64	Homicide/Assault	E960-E969	X85-Y09
65	Cause Undetermined	E980-E989	Y10-Y34
	other External Causes	Rem (E930-E999)	

¹ 279.8 not included

Estimated Population classified by Sex and Age Group, 2002 - 2007*thousands*

Sex and Age Group	Persons in April of each year					
	2002	2003	2004	2005	2006 ¹	2007 ²
Total persons	3,917.2	3,979.9	4,045.2	4,133.8	4,239.8	4,339.0
0 - 4 years	277.6	284.3	290.7	296.5	302.3	312.3
5 - 9 "	264.1	268.7	274.9	280.6	288.3	295.9
10 - 14 "	285.7	281.7	278.2	276.3	273.9	275.6
15 - 19 "	313.2	304.7	298.4	292.8	290.3	286.0
20 - 24 "	328.3	334.0	336.1	339.5	342.5	347.8
25 - 29 "	312.7	317.4	325.4	345.2	373.1	405.1
30 - 34 "	304.7	316.1	325.1	335.8	349.4	358.0
35 - 39 "	290.9	296.4	303.5	312.1	322.1	331.7
40 - 44 "	272.0	279.2	286.0	294.1	301.3	305.8
45 - 49 "	249.6	253.7	259.2	265.4	274.7	279.8
50 - 54 "	230.8	235.1	238.1	243.1	247.1	252.6
55 - 59 "	197.3	206.6	213.9	221.4	225.3	227.4
60 - 64 "	154.3	160.3	166.0	172.1	181.7	190.5
65 - 69 "	133.5	135.0	137.5	140.8	143.4	143.5
70 - 74 "	112.1	113.8	115.7	117.4	119.2	119.2
75 - 79 "	89.8	89.5	90.0	91.0	92.5	92.1
80 - 84 "	58.9	61.7	63.1	64.0	64.9	65.4
85 years and over	41.7	41.9	43.4	45.7	48.0	50.3
Total males	1,946.2	1,976.9	2,011.9	2,061.8	2,121.2	2,171.1
0 - 4 years	142.0	145.4	148.7	151.7	154.6	160.5
5 - 9 "	135.9	137.8	141.2	144.3	148.0	151.3
10 - 14 "	146.1	144.4	142.8	142.0	140.5	141.3
15 - 19 "	160.4	155.9	152.7	149.8	148.2	145.4
20 - 24 "	165.3	167.0	168.2	170.0	172.8	175.0
25 - 29 "	156.1	158.6	162.9	174.1	189.3	204.7
30 - 34 "	152.4	158.2	161.8	168.7	177.5	182.6
35 - 39 "	144.5	147.4	152.4	157.8	163.8	169.1
40 - 44 "	135.3	138.9	142.5	147.1	151.4	153.6
45 - 49 "	125.0	126.9	129.7	132.9	138.0	140.6
50 - 54 "	116.6	118.5	120.1	122.9	124.6	127.1
55 - 59 "	99.8	104.9	108.5	112.0	113.9	114.9
60 - 64 "	77.6	80.7	83.8	86.7	91.6	96.0
65 - 69 "	65.3	66.0	67.3	69.1	70.9	71.3
70 - 74 "	51.7	53.2	54.6	55.7	56.5	56.6
75 - 79 "	37.4	37.3	37.8	38.8	40.1	40.6
80 - 84 "	22.3	23.4	23.9	24.3	24.7	25.0
85 years and over	12.5	12.6	13.2	14.0	14.8	15.5
Total females	1,971.0	2,002.9	2,033.3	2,072.0	2,118.7	2,167.9
0 - 4 years	135.6	138.9	142.0	144.8	147.7	151.8
5 - 9 "	128.2	130.9	133.8	136.3	140.3	144.6
10 - 14 "	139.6	137.3	135.4	134.4	133.4	134.2
15 - 19 "	152.8	148.8	145.7	143.0	142.0	140.6
20 - 24 "	163.0	167.0	167.9	169.5	169.7	172.8
25 - 29 "	156.6	158.8	162.5	171.1	183.8	200.4
30 - 34 "	152.3	157.9	163.4	167.0	171.9	175.3
35 - 39 "	146.4	149.0	151.1	154.4	158.3	162.5
40 - 44 "	136.7	140.3	143.5	147.1	149.9	152.2
45 - 49 "	124.6	126.8	129.6	132.6	136.8	139.3
50 - 54 "	114.3	116.6	118.0	120.2	122.5	125.5
55 - 59 "	97.5	101.6	105.4	109.4	111.4	112.5
60 - 64 "	76.7	79.6	82.2	85.4	90.2	94.6
65 - 69 "	68.2	69.0	70.2	71.7	72.5	72.2
70 - 74 "	60.4	60.6	61.1	61.7	62.6	62.6
75 - 79 "	52.4	52.3	52.2	52.2	52.3	51.5
80 - 84 "	36.6	38.3	39.2	39.7	40.2	40.4
85 years and over	29.2	29.3	30.2	31.7	33.2	34.8

¹ De Facto² Preliminary