



**Central Statistics Office**  
An Phríomh-Oifig Staidrimh

# **Vital Statistics**

## **Fourth Quarter and Yearly Summary**

**2006**

Published by the Stationery Office, Dublin, Ireland.

To be purchased from the:

Central Statistics Office, Information Section, Skehard Road, Cork,

Government Publications Sales Office, Sun Alliance House,  
Molesworth Street, Dublin 2,

or through any bookseller.

Compiled by the Central Statistics Office on behalf of the Department of  
Health and Children.

Prn A7/1453 [No. 571]

Price €10.00

July 2007

© Government of Ireland 2007

Material compiled and presented by  
Central Statistics Office.

Reproduction is authorised, except for commercial  
purposes, provided the source is acknowledged.

ISBN 0-7557-7196-6  
ISSN 0790-7710

# Contents

## Fourth Quarter 2006

	<b>Page</b>
<b>Commentary</b>	6
<b>Tables</b>	
Table 1	8
Table 2	9
Table 3	11
Table 4	12
Table 5	13
Table 6	14
Table 7	15
Table 8	16
Table 9	18
Table 10	20
Table 11	21
Table 12	22

Note: Page 10 is blank

# Contents

## Yearly Summary 2006

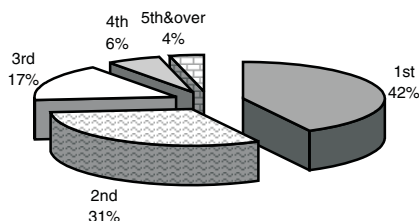
	<b>Page</b>
<b>Commentary</b>	24
<b>Tables</b>	
Table 1	Births registered classified by age of mother at maternity between 2004 and 2006 and their corresponding annual age specific (asfr) and total period fertility rates (tpfr) 27
Table 2	Births registered, classified by sex and age of mother at maternity showing the number of births outside marriage 28
Table 3	Births registered, classified by age of mother at maternity and previous number of liveborn children 29
Table 4	Births registered, classified by area of residence and age of mother 30
Table 5	Births registered outside marriage, classified by area of residence and age of mother 31
Table 6	Births registered, classified by area of occurrence and by area of residence of mother, showing the percentage of births outside marriage 32
Table 7	Deaths registered, classified by area of occurrence and area of residence of deceased, showing the number aged 65 and over 33
Table 8	Deaths registered classified by cause and age group 34
Table 9	Deaths registered, classified by principal cause and area of residence of deceased 36
Table 10	Deaths registered of infants under 1 year, classified by cause, sex and age group 38
Table 11	Infant and neonatal mortality by area of residence of deceased 39
Table 12	Divorce, Judicial Separation and Nullity applications received and granted by the courts in the year ending December 2006 40
<b>Appendix</b>	
	Glossary of terms 42
	Cause of death Eurostat shortlist (August 1998)
Table 1	Estimated Population classified by Sex and Age Group, 2001-2006 45
Table 2	Deaths which were registered on the authority of An tÁrd Chlaraitheoir (Registrar General) in 2005, classified by principal groups of causes, sex and year of occurrence 46

**Fourth Quarter 2006**

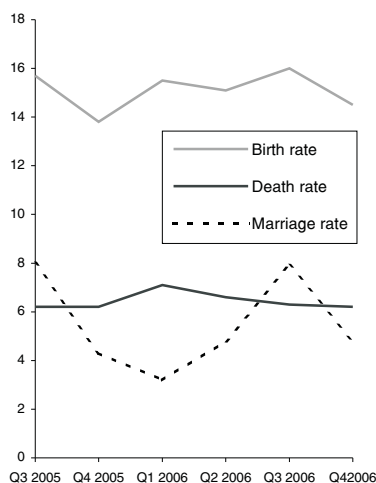
## 4th Quarter 2006

### Commentary

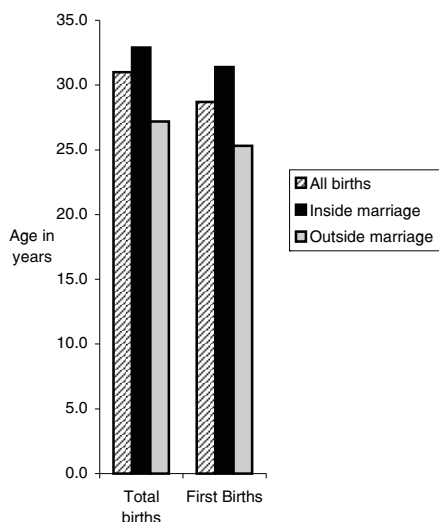
#### Birth Order



#### Annual birth, death and marriage rates per 1,000 population



#### Average age at maternity



#### Introduction

This report has been prepared by the Central Statistics Office for the Minister for Health and Children in accordance with the provisions of Section 2 of the Vital Statistics and Births, Deaths and Marriages Registration Act, 1952 and Section 73 of the Civil Registration Act 2004.

#### Births

There were 15,380 births registered in quarter 4 of 2006, 7,886 males and 7,494 females, an increase of 1,148 on the quarter 4 figure of 2005. The quarter 4 2006 total is 34.4% higher than in 1997 when 11,441 babies were registered.

This represents an annual birth rate of 14.5 per 1,000 of the population, 0.7 above quarter 4 of 2005. This rate is 2.0 per 1,000 population higher than in 1997.

#### Birth order

A total of 6,465 births (42%) were to first time mothers in quarter 4 of 2006. Second time mothers had 4,796 births (31.2%) (See Table 3). This compares to 4,584 (40.2%) first births registered in quarter 4 1997.

#### Births outside marriage

There were 5,217 births registered as outside marriage in quarter 4 of 2006. This accounted for 33.9% of all births, an increase of 2.5% on quarter 4 2005. The highest percentage of births outside marriage occurred in Limerick City at 62.5%, while the lowest percentage was in Galway County at 19.7% (see Table 6). In quarter 4 1997, 3,068 births were registered outside marriage or 26.8% of all births.

#### Deaths

There were 6,535 deaths registered in quarter 4 2006, 3,416 males and 3,119 females, an increase of 175 on the quarter 4 figure 2005. The quarter 4 2006 total is 8.9% lower than in 1997 when 7,176 deaths were registered.

This represents an annual death rate of 6.2 per 1,000 population, the same as quarter 4 2005. This rate is 1.6 per 1,000 population lower than in 1997.

#### Age at death

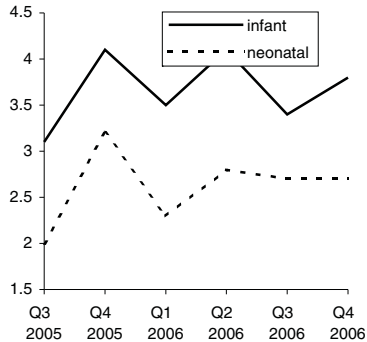
There were 58 infant deaths registered in quarter 4 2006, a decrease of 1 on the quarter 4 figure 2005. Neonatal deaths are deaths of infants at ages under 4 weeks. There were 42 neonatal deaths registered in quarter 4 2006, a decrease of 3 on the quarter 4 figure 2005.

In quarter 4 2006 the infant mortality rate of 3.8 per 1,000 live births was 0.3 below quarter 4 2005. This rate is 2.9 per 1,000 live births lower than in 1997. The neonatal mortality rate per 1,000 live births in quarter 3 2006 was 2.7, 0.5 lower than quarter 4 2005 and 1.1 below quarter 4 1997.

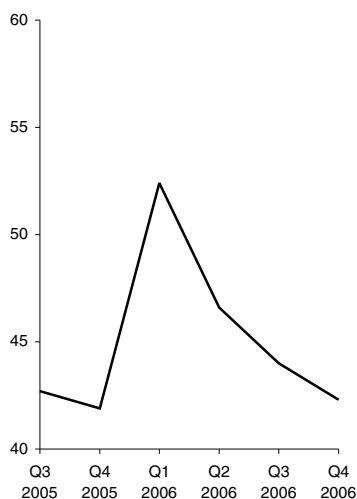
There were 4,946 deaths of persons aged 65 and over registered in quarter 4 2006, an increase of 119 on the quarter 4 figure 2005. The quarter 4 2006 total is 11.9% lower than in 1997 when 5,613 deaths were registered.

This represents an annual death rate of 42.3 per 1,000 population aged 65 and over, 0.4 above quarter 4 2005. This rate is 11.7 per 1,000 population aged 65 and over lower than in 1997.

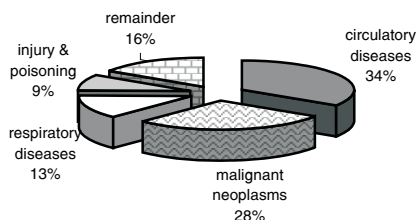
**Infant and neonatal mortality rates per 1,000 live births**



**Death rates for ages 65 & over per 1,000 relevant population**



**Principal causes of death**



## Cause of death

### • Diseases of the Circulatory System:

Diseases of the Circulatory System accounted for 2,228 deaths, or an annual rate of 2.1 per 1,000 population. Of these, 1,073 were due to Ischaemic Heart Disease and 445 to Cerebrovascular Disease.

### • Malignant Neoplasms:

There were 1,840 deaths from malignant neoplasms. This is equivalent to an annual rate of 1.7 per 1,000 population. Of these, 234 were due to malignant neoplasms of the colon, rectum and anus and 412 to malignant neoplasms of the larynx and trachea, bronchus and lung.

### • Diseases of the Respiratory System:

Deaths from pneumonia numbered 390; chronic bronchitis, emphysema and asthma (including chronic obstructive airways disease) accounted for 246 deaths; 211 deaths resulted from other respiratory diseases.

### • Injury and Poisoning:

There were 108 deaths from injuries received in motor vehicle accidents (including non-traffic accidents) while all other injuries and poisonings accounted for 440 deaths.

## Methodology

Deaths are coded according to the 9th revision of the International Statistical Classification of Diseases, Injuries and Causes of death.

## Marriages

The number of marriages registered during the quarter was 5,139 equivalent to an annual marriage rate of 4.8 per 1,000 population, 0.2 above the corresponding quarter of 2005. The quarter 4 2006 total is 52.1% higher than in quarter 4 1997 when 3,378 marriages were registered.

## Population

The total from the Census of Population 2006 was 4,239,848.

## Methodology

All figures in this report are classified by quarter of registration. Delay in the registration of some births, deaths and marriages result in them being included in a later period in these quarterly reports.

**Table 1 Marriages, births, deaths and natural increase**

	Marriages <sup>1</sup>	Live Births				Deaths				Natural Increase
		Total	First	Outside marriage	Average Age	Total	Infant	Neonatal	65 & over	
<b>Quarter 1</b>										
1997	1,665	12,980	5,032	3,656	29.9	9,235	87	53	7,541	3,745
1998	1,642	13,405	5,209	3,875	30.0	8,927	82	52	7,244	4,478
1999	2,064	13,388	5,491	4,275	30.0	9,867	80	61	8,104	3,521
2000	2,200	13,984	5,693	4,656	30.0	9,804	86	59	8,062	4,180
2001	2,168	14,785	5,963	4,877	30.1	8,408	81	56	6,747	6,377
2002	2,484	14,972	6,127	4,877	30.3	7,749	73	51	6,281	7,223
2003	2,571	15,238	6,158	5,080	30.3	7,756	67	52	6,259	7,482
2004	2,676	15,599	6,082	5,181	30.7	7,873	72	56	6,347	7,726
2005	2,892	15,334	6,290	5,147	30.9	7,352	65	47	5,920	7,982
2006	3,267	15,958	6,470	5,481	30.9	7,320	56	36	6,040	8,638
<b>Quarter 2</b>										
1997	3,577	13,679	5,036	3,445	30.2	8,104	80	48	6,434	5,575
1998	3,689	13,729	5,181	3,674	30.1	8,021	88	56	6,421	5,708
1999	4,577	13,585	5,299	4,053	30.2	7,777	79	55	6,155	5,808
2000	4,670	13,794	5,427	4,260	30.3	7,650	77	52	5,974	6,144
2001	4,533	14,303	5,615	4,307	30.5	7,260	74	55	5,808	7,043
2002	4,810	15,247	5,858	4,672	30.5	7,680	91	64	6,074	7,567
2003	4,827	15,582	6,095	4,689	30.6	7,203	83	59	5,625	8,379
2004	4,719	15,535	5,897	4,874	30.8	6,881	74	53	5,351	8,654
2005	5,374	15,306	5,922	4,810	31.1	7,349	70	52	5,826	7,957
2006	5,094	15,979	6,369	5,056	31.1	6,967	65	44	5,488	9,012
<b>Quarter 3</b>										
1997	7,011	14,211	5,442	3,723	30.2	7,090	80	51	5,505	7,121
1998	7,530	14,027	5,552	3,901	30.1	7,187	72	57	5,625	6,840
1999	7,342	13,840	5,635	4,323	30.0	6,645	70	44	5,218	7,195
2000	7,593	13,967	5,641	4,451	30.2	6,832	89	54	5,372	7,135
2001	7,557	14,688	5,901	4,472	30.3	6,974	97	67	5,403	7,714
2002	7,580	15,593	6,333	4,855	30.4	6,941	68	50	5,391	8,652
2003	7,996	15,909	6,240	4,981	30.6	6,639	85	68	5,147	9,270
2004	8,168	15,605	6,171	5,100	30.8	6,473	72	43	5,123	9,132
2005	8,347	16,170	6,548	5,101	30.9	6,380	50	33	4,919	9,790
2006	8,341	16,920	6,930	5,541	31.0	6,657	58	46	5,146	10,263
<b>Quarter 4</b>										
1997	3,378	11,441	4,584	3,068	30.0	7,176	77	44	5,613	4,265
1998	3,922	12,390	5,053	3,683	30.1	7,217	88	67	5,566	5,173
1999	4,543	12,541	5,139	3,810	30.2	7,394	64	48	5,815	5,147
2000	4,705	12,494	5,236	3,868	30.2	6,829	70	53	5,324	5,665
2001	4,988	14,106	5,915	4,393	30.3	7,170	85	57	5,422	6,936
2002	5,682	14,709	5,989	4,411	30.5	6,978	74	49	5,378	7,731
2003	4,908	14,788	5,883	4,563	30.7	7,225	76	52	5,568	7,563
2004	5,056	14,945	5,975	4,783	30.9	6,924	82	62	5,253	8,021
2005	4,742	14,232	5,861	4,470	31.1	6,360	59	45	4,827	7,872
2006	5,139	15,380	6,465	5,217	31.0	6,535	58	42	4,946	8,845
<b>Total</b>										
1997	15,631	52,311	20,094	13,892	30.1	31,605	324	196	25,093	20,706
1998	16,783	53,551	20,995	15,133	30.1	31,352	330	232	24,856	22,199
1999	18,526	53,354	21,564	16,461	30.1	31,683	293	208	25,292	21,671
2000	19,168	54,239	21,997	17,235	30.2	31,115	322	218	24,732	23,124
2001	19,246	57,882	23,394	18,049	30.3	29,812	337	235	23,380	28,070
2002	20,556	60,521	24,307	18,815	30.4	29,348	306	214	23,124	31,173
2003	20,302	61,517	24,376	19,313	30.6	28,823	311	231	22,599	32,694
2004	20,619	61,684	24,125	19,938	30.8	28,151	300	214	22,074	33,533
2005	21,355	61,042	24,621	19,528	31.0	27,441	244	177	21,492	33,601
2006	21,841	64,237	26,234	21,295	31.0	27,479	237	168	21,620	36,758

<sup>1</sup> 1996, 2002 and 2005 marriage figures are final. All other marriage figures are subject to revision.



**Table 2 Annual marriage, birth, death and natural increase rates per 1,000 population**

	Marriages	Live Births			Deaths				Natural Increase
		Total	% First births <sup>1</sup>	% Outside marriage	Total	Infant Mortality <sup>2</sup>	Neonatal Mortality <sup>3</sup>	65 & over	
<b>Quarter 1</b>									
1997	1.8	14.3	38.8	28.2	10.2	6.7	4.1	72.9	4.1
1998	1.8	14.6	39.0	28.9	9.7	6.1	3.9	69.6	4.9
1999	2.2	14.5	41.1	31.9	10.7	6.0	4.6	77.1	3.8
2000	2.4	14.9	40.9	33.3	10.5	6.1	4.2	76.4	4.5
2001	2.3	15.6	40.5	33.0	8.9	5.5	3.8	63.5	6.7
2002	2.6	15.6	41.2	32.6	8.1	4.9	3.4	58.5	7.5
2003	2.6	15.6	40.7	33.3	7.9	4.4	3.4	57.4	7.6
2004	2.7	15.7	40.4	33.2	7.9	4.6	3.6	57.3	7.8
2005	2.9	15.2	41.3	33.6	7.3	4.2	3.1	52.5	7.9
2006	3.2	15.5	40.8	34.3	7.1	3.5	2.3	52.4	8.4
<b>Quarter 2</b>									
1997	3.9	14.9	36.9	25.2	8.8	5.8	3.5	61.9	6.1
1998	4.0	14.8	37.9	26.8	8.7	6.4	4.1	61.1	6.2
1999	4.9	14.5	39.2	29.8	8.3	5.8	4.0	58.4	6.2
2000	4.9	14.6	39.5	30.9	8.1	5.6	3.8	56.3	6.5
2001	4.7	14.9	39.5	30.1	7.5	5.2	3.8	54.1	7.3
2002	4.9	15.6	38.8	30.6	7.8	6.0	4.2	55.7	7.7
2003	4.9	15.7	39.5	30.1	7.2	5.3	3.8	50.8	8.4
2004	4.7	15.4	38.8	31.4	6.8	4.8	3.4	47.5	8.6
2005	5.2	14.8	38.8	31.4	7.1	4.6	3.4	50.6	7.7
2006	4.8	15.1	40.0	31.6	6.6	4.1	2.8	46.9	8.5
<b>Quarter 3</b>									
1997	7.7	15.5	38.4	26.2	7.7	5.6	3.6	52.9	7.8
1998	8.1	15.2	39.7	27.8	7.8	5.1	4.1	53.5	7.4
1999	7.8	14.8	40.9	31.2	7.1	5.1	3.2	49.5	7.7
2000	8.0	14.7	40.6	31.9	7.2	6.4	3.9	50.6	7.5
2001	7.9	15.3	40.4	30.4	7.3	6.6	4.6	50.3	8.0
2002	7.7	15.9	41.0	31.1	7.1	4.4	3.2	49.5	8.8
2003	8.0	16.0	39.6	31.3	6.7	5.3	4.3	46.5	9.3
2004	8.1	15.4	39.8	32.7	6.4	4.6	2.8	45.4	9.0
2005	8.1	15.7	40.7	31.5	6.2	3.1	2.0	42.7	9.5
2006	7.9	16.0	41.1	32.7	6.3	3.4	2.7	44.0	9.7
<b>Quarter 4</b>									
1997	3.7	12.5	40.2	26.8	7.8	6.7	3.8	54.0	4.7
1998	4.2	13.4	41.0	29.7	7.8	7.1	5.4	53.0	5.6
1999	4.9	13.4	41.1	30.4	7.9	5.1	3.8	55.1	5.5
2000	5.0	13.2	42.1	31.0	7.2	5.6	4.2	50.1	6.0
2001	5.2	14.7	42.2	31.1	7.5	6.0	4.0	50.5	7.2
2002	5.8	15.0	41.2	30.0	7.1	5.0	3.3	49.3	7.9
2003	4.9	14.9	40.9	30.9	7.3	5.1	3.5	50.3	7.6
2004	5.0	14.8	40.3	32.0	6.8	5.5	4.1	46.6	7.9
2005	4.6	13.8	41.4	31.4	6.2	4.1	3.2	41.9	7.6
2006	4.8	14.5	42.2	33.9	6.2	3.8	2.7	42.3	8.3
<b>Total</b>									
1997	4.3	14.3	38.5	26.6	8.6	6.2	3.7	60.3	5.7
1998	4.5	14.5	39.4	28.3	8.5	6.2	4.3	59.2	6.0
1999	5.0	14.3	40.6	30.9	8.5	5.5	3.9	59.9	5.8
2000	5.1	14.3	40.8	31.8	8.2	5.9	4.0	58.2	6.1
2001	5.0	15.0	40.7	31.2	7.7	5.8	4.1	54.4	7.3
2002	5.2	15.5	40.5	31.1	7.5	5.1	3.5	53.0	8.0
2003	5.1	15.5	40.2	31.4	7.2	5.1	3.8	51.0	8.2
2004	5.1	15.3	39.8	32.3	7.0	4.9	3.5	49.0	8.3
2005	5.2	14.8	40.5	32.0	6.6	4.0	2.9	46.7	8.1
2006	5.2	15.2	41.0	33.2	6.5	3.7	2.6	46.2	8.7

<sup>1</sup> First births divided by the total number of live births (excluding those with unstated parity), multiplied by 100<sup>2</sup> Infant mortality is the number of infant deaths per 1,000 live births<sup>3</sup> Neonatal mortality is the number of neonatal (infants aged under 4 weeks) deaths per 1,000 live births



**Table 3 Births registered, classified by age of mother at maternity, sex and previous number of liveborn children showing the number of births outside marriage**

Age of mother at maternity	Total births			Births outside marriage	Previous number of liveborn children						
	Males	Females	Total		0	1	2	3	4	5 or more	Not stated
<b>All ages</b>	7,886	7,494	15,380	5,217	6,465	4,796	2,534	922	361	228	74
<b>15 and under</b>	5	7	12	12	11	1	-	-	-	-	-
16	22	16	38	38	38	-	-	-	-	-	-
17	32	39	71	69	67	4	-	-	-	-	-
18	86	74	160	147	148	10	2	-	-	-	-
19	147	132	279	254	256	22	1	-	-	-	-
<b>Under 20</b>	292	268	560	520	520	37	3	-	-	-	-
20	162	151	313	277	252	51	10	-	-	-	-
21	194	153	347	302	258	81	6	2	-	-	-
22	203	166	369	290	251	85	25	7	-	-	1
23	220	217	437	320	254	139	37	6	-	-	1
24	275	233	508	358	299	147	48	9	3	1	1
<b>20-24</b>	1,054	920	1,974	1,547	1,314	503	126	24	3	1	3
25	293	304	597	373	283	214	62	22	5	6	5
26	319	336	655	346	305	221	90	24	9	3	3
27	417	390	807	372	419	227	98	41	14	8	-
28	408	360	768	260	381	222	103	35	14	10	3
29	439	405	844	260	408	278	109	23	14	10	2
<b>25-29</b>	1,876	1,795	3,671	1,611	1,796	1,162	462	145	56	37	13
30	498	462	960	240	412	338	134	42	22	8	4
31	546	514	1,060	213	444	370	160	49	18	16	3
32	581	494	1,075	193	423	374	172	69	16	12	9
33	530	525	1,055	156	361	366	227	61	19	14	7
34	537	515	1,052	149	315	372	230	77	30	21	7
<b>30-34</b>	2,692	2,510	5,202	951	1,955	1,820	923	298	105	71	30
35	460	473	933	122	252	317	242	79	21	17	5
36	419	388	807	113	190	279	200	87	31	16	4
37	335	350	685	103	143	217	184	77	36	21	7
38	227	261	488	83	87	153	134	70	25	14	5
39	199	182	381	51	71	124	97	49	28	9	3
<b>35-39</b>	1,640	1,654	3,294	472	743	1,090	857	362	141	77	24
<b>40 and over</b>	328	345	673	113	136	182	160	93	56	42	4
Age not stated	4	2	6	3	1	2	3	-	-	-	-

**Table 4 Births registered, classified by area of residence and age of mother**

Area of residence	Under 20	20-24	25-29	30-34	35-39	40 and over	Age not stated	All ages	Average age of mother at maternity	
									Total	First
<b>LEINSTER</b>	331	1,167	2,081	2,918	1,786	358	1	8,642	30.8	28.6
Carlow	7	30	61	63	37	12	-	210	30.6	27.5
Dublin City	83	281	360	448	297	68	1	1,538	30.2	28.3
South Dublin	45	152	291	331	190	32	-	1,041	30.2	28.3
Fingal	26	133	261	409	220	42	-	1,091	31.0	29.3
Dun Laoghaire Rathdown	25	47	84	193	153	48	-	550	32.4	29.9
Kildare	35	112	214	318	184	36	-	899	30.9	28.5
Kilkenny	3	28	58	80	79	15	-	263	32.1	30.0
Laois	10	47	66	87	41	8	-	259	30.0	27.5
Longford	6	22	34	38	25	5	-	130	30.2	28.1
Louth	14	58	108	135	77	15	-	407	30.5	28.1
Meath	15	45	155	280	152	25	-	672	31.8	29.9
Offaly	9	36	57	76	50	6	-	234	30.5	27.8
Westmeath	18	46	94	114	59	10	-	341	30.1	27.3
Wexford	22	71	125	161	108	17	-	504	30.6	27.7
Wicklow	13	59	113	185	114	19	-	503	31.4	29.3
<b>MUNSTER</b>	141	519	988	1,449	952	179	2	4,230	31.2	28.8
Clare	10	38	78	141	98	20	-	385	31.8	29.3
Cork City	41	73	99	107	80	11	-	411	29.2	26.8
Cork County	25	122	310	542	358	61	2	1,420	32.0	30.1
Kerry	6	60	115	158	103	32	-	474	31.6	29.1
Limerick City	15	54	50	50	32	7	-	208	28.8	25.3
Limerick County	16	56	102	165	98	17	-	454	31.0	28.7
North Tipperary	6	27	55	85	64	8	-	245	31.7	29.4
South Tipperary	9	41	72	73	52	8	-	255	30.3	27.8
Waterford City	4	29	37	38	16	2	-	126	29.2	27.1
Waterford County	9	19	70	90	51	13	-	252	31.4	28.9
<b>CONNACHT</b>	46	177	389	569	393	93	1	1,668	31.6	29.2
Galway City	6	33	64	76	51	13	1	244	30.9	28.5
Galway County	11	39	122	219	158	35	-	584	32.4	30.6
Leitrim	2	21	21	29	18	4	-	95	30.6	27.7
Mayo	15	35	94	125	86	17	-	372	31.4	28.1
Roscommon	5	22	40	58	34	12	-	171	31.3	28.9
Sligo	7	27	48	62	46	12	-	202	31.2	28.9
<b>ULSTER (PART OF)</b>	42	111	213	266	163	43	2	840	30.6	27.5
Cavan	11	25	66	89	51	14	1	257	31.0	28.3
Donegal	25	69	108	135	83	21	1	442	30.3	26.9
Monaghan	6	17	39	42	29	8	-	141	30.9	28.3
<b>STATE</b>	560	1,974	3,671	5,202	3,294	673	6	15,380	31.0	28.7
<b>REGIONAL AUTHORITIES:</b>										
Border	65	217	390	492	304	74	2	1,544	30.6	27.9
Midland	43	151	251	315	175	29	-	964	30.2	27.6
West	37	129	320	478	329	77	1	1,371	31.7	29.3
Dublin	179	613	996	1,381	860	190	1	4,220	30.7	28.8
Mid-East	63	216	482	783	450	80	-	2,074	31.3	29.1
Mid-West	47	175	285	441	292	52	-	1,292	31.0	28.4
South-East	54	218	423	505	343	67	-	1,610	30.8	28.2
South-West	72	255	524	807	541	104	2	2,305	31.4	29.2

**Table 5 Births registered outside marriage, classified by area of residence and age of mother**

Area of residence	Under 25	25-29	30-34	35-39	40 and over	Age not stated	All ages	Average age of mother at maternity	
								Total	First
<b>LEINSTER</b>	1,216	961	561	291	63	-	3,092	27.2	25.4
Carlow	33	24	19	6	2	-	84	27.5	25.3
Dublin City	294	198	140	68	14	-	714	27.2	25.2
South Dublin	164	145	72	37	5	-	423	26.9	25.2
Fingal	113	111	75	27	8	-	334	27.7	26.1
Dun Laoghaire Rathdown	63	46	30	16	5	-	160	27.1	25.1
Kildare	118	86	49	22	5	-	280	26.8	24.7
Kilkenny	25	26	7	9	3	-	70	27.7	25.8
Laois	46	29	13	7	-	-	95	26.0	24.7
Longford	21	14	6	4	-	-	45	26.3	23.8
Louth	60	58	27	16	4	-	165	27.3	25.2
Meath	54	57	40	24	4	-	179	28.3	26.5
Offaly	38	21	10	8	2	-	79	26.5	24.2
Westmeath	47	33	15	9	2	-	106	26.5	24.8
Wexford	76	63	29	16	2	-	186	26.8	25.1
Wicklow	64	50	29	22	7	-	172	28.1	26.8
<b>MUNSTER</b>	547	441	262	116	27	1	1,394	27.1	25.2
Clare	37	39	23	11	1	-	111	27.4	24.9
Cork City	102	51	34	14	3	-	204	25.8	24.0
Cork County	120	112	71	37	7	1	348	27.8	26.1
Kerry	49	50	22	13	3	-	137	27.6	26.1
Limerick City	65	33	24	6	2	-	130	26.0	23.8
Limerick County	56	44	25	7	3	-	135	26.4	25.3
North Tipperary	26	23	14	8	1	-	72	27.7	24.1
South Tipperary	38	32	13	5	-	-	88	26.5	24.7
Waterford City	30	22	11	5	1	-	69	26.8	24.9
Waterford County	24	35	25	10	6	-	100	28.8	26.2
<b>CONNACHT</b>	181	137	79	42	16	-	455	27.4	25.9
Galway City	30	31	22	9	3	-	95	28.2	26.1
Galway County	41	36	19	16	3	-	115	27.9	26.6
Leitrim	14	4	4	1	-	-	23	25.9	24.8
Mayo	46	36	19	5	4	-	110	26.6	25.3
Roscommon	21	9	3	3	4	-	40	27.2	24.7
Sligo	29	21	12	8	2	-	72	27.5	26.6
<b>ULSTER (PART OF)</b>	123	72	49	23	7	2	276	26.7	24.4
Cavan	30	27	16	3	3	1	80	26.8	24.4
Donegal	74	33	26	16	4	1	154	26.6	24.2
Monaghan	19	12	7	4	-	-	42	26.9	24.9
<b>STATE</b>	2,067	1,611	951	472	113	3	5,217	27.2	25.3
<b>REGIONAL AUTHORITIES:</b>									
Border	226	155	92	48	13	2	536	27.0	25.0
Midland	152	97	44	28	4	-	325	26.4	24.5
West	138	112	63	33	14	-	360	27.5	25.8
Dublin	634	500	317	148	32	-	1,631	27.2	25.4
Mid-East	236	193	118	68	16	-	631	27.6	25.8
Mid-West	184	139	86	32	7	-	448	26.8	24.6
South-East	226	202	104	51	14	-	597	27.3	25.3
South-West	271	213	127	64	13	1	689	27.1	25.4

**Table 6 Births registered, classified by area of occurrence and by area of residence of mother, showing the percentage of births outside marriage**

	Area of occurrence	Area of residence of mother				Percentage of births outside marriage
		Males	Females	Total	Rate <sup>(a)</sup>	
<b>LEINSTER</b>	8,508	4,403	4,239	8,642	15.1	35.8
Carlow	1	126	84	210	16.7	40.0
Dublin City	5,483	781	757	1,538	12.2	46.4
South Dublin	-	521	520	1,041	16.9	40.6
Fingal	-	543	548	1,091	18.2	30.6
Dun Laoghaire Rathdown	291	265	285	550	11.3	29.1
Kildare	3	445	454	899	19.3	31.1
Kilkenny	402	136	127	263	12.0	26.6
Laois	427	130	129	259	15.4	36.7
Longford	-	56	74	130	15.1	34.6
Louth	854	219	188	407	14.6	40.5
Meath	-	352	320	672	16.5	26.6
Offaly	-	128	106	234	13.2	33.8
Westmeath	548	183	158	341	17.2	31.1
Wexford	498	257	247	504	15.3	36.9
Wicklow	1	261	242	503	15.9	34.2
<b>MUNSTER</b>	4,205	2,200	2,030	4,230	14.4	33.0
Clare	2	213	172	385	13.9	28.8
Cork City	1,930	218	193	411	13.8	49.6
Cork County	4	720	700	1,420	15.7	24.5
Kerry	407	220	254	474	13.6	28.9
Limerick City	1,112	101	107	208	15.8	62.5
Limerick County	-	254	200	454	13.8	29.7
North Tipperary	-	135	110	245	14.8	29.4
South Tipperary	238	142	113	255	12.3	34.5
Waterford City	512	69	57	126	11.0	54.8
Waterford County	-	128	124	252	16.2	39.7
<b>CONNACHT</b>	1,904	851	817	1,668	13.2	27.3
Galway City	784	132	112	244	13.5	38.9
Galway County	411	287	297	584	14.7	19.7
Leitrim	-	56	39	95	13.1	24.2
Mayo	357	186	186	372	12.0	29.6
Roscommon	1	81	90	171	11.6	23.4
Sligo	351	109	93	202	13.3	35.6
<b>ULSTER (PART OF)</b>	763	432	408	840	12.6	32.9
Cavan	369	126	131	257	16.1	31.1
Donegal	394	229	213	442	12.0	34.8
Monaghan	-	77	64	141	10.1	29.8
<b>STATE</b>	15,380	7,886	7,494	15,380	14.5	33.9
<b>REGIONAL AUTHORITIES:</b>						
Border	1,968	816	728	1,544	13.2	34.7
Midland	975	497	467	964	15.3	33.7
West	1,553	686	685	1,371	13.2	26.3
Dublin	5,774	2,110	2,110	4,220	14.2	38.6
Mid-East	4	1,058	1,016	2,074	17.5	30.4
Mid-West	1,114	703	589	1,292	14.3	34.7
South-East	1,651	858	752	1,610	14.0	37.1
South-West	2,341	1,158	1,147	2,305	14.8	29.9

(a) Annual rates based on 2006 Population

**Table 7 Deaths registered, classified by area of occurrence and area of residence of deceased, showing the number aged 65 and over**

	Area of occurrence	Area of residence of deceased				Persons 65 years and over
		Males	Females	Total	Rate <sup>(a)</sup>	
<b>LEINSTER</b>	3,239	1,677	1,584	3,261	5.7	2,430
Carlow	88	42	38	80	6.4	56
Dublin City	(b)	482	481	963	7.6	725
South Dublin	(b)	115	118	233	3.8	148
Fingal	(b)	83	68	151	2.5	100
Dun Laoghaire Rathdown	(b)	119	163	282	5.8	228
Kildare	250	107	105	212	4.6	163
Kilkenny	122	79	59	138	6.3	101
Laois	87	59	44	103	6.1	89
Longford	55	41	24	65	7.6	50
Louth	218	90	85	175	6.3	127
Meath	146	103	87	190	4.7	134
Offaly	83	53	32	85	4.8	62
Westmeath	153	81	74	155	7.8	118
Wexford	221	133	101	234	7.1	177
Wicklow	196	90	105	195	6.2	152
<b>MUNSTER</b>	1,964	1,006	946	1,952	6.7	1,486
Clare	153	101	79	180	6.5	127
Cork City	549	136	133	269	9.0	205
Cork County	237	267	244	511	5.6	384
Kerry	262	145	121	266	7.6	215
Limerick City	236	52	56	108	8.2	78
Limerick County	80	90	97	187	5.7	145
North Tipperary	101	68	51	119	7.2	94
South Tipperary	142	59	73	132	6.3	100
Waterford City	147	35	33	68	5.9	50
Waterford County	57	53	59	112	7.2	88
<b>CONNACHT</b>	871	475	375	850	6.7	679
Galway City	240	24	15	39	2.2	31
Galway County	140	187	130	317	8.0	250
Leitrim	42	20	24	44	6.1	36
Mayo	241	127	118	245	7.9	194
Roscommon	72	52	46	98	6.7	77
Sligo	136	65	42	107	7.0	91
<b>ULSTER (PART OF)</b>	461	258	214	472	7.1	351
Cavan	136	69	58	127	7.9	93
Donegal	241	141	114	255	6.9	193
Monaghan	84	48	42	90	6.4	65
<b>STATE</b>	6,535	3,416	3,119	6,535	6.2	4,946
<b>REGIONAL AUTHORITIES:</b>						
Border	857	433	365	798	6.8	605
Midland	378	234	174	408	6.5	319
West	693	390	309	699	6.7	552
Dublin	1,620	799	830	1,629	5.5	1,201
Mid-East	592	300	297	597	5.0	449
Mid-West	570	311	283	594	6.6	444
South-East	777	401	363	764	6.6	572
South-West	1,048	548	498	1,046	6.7	804

(a) Annual rates based on 2006 Population.

(b) Figures for deaths occurring in Dublin are only available at Regional Authority level

**Table 8 Deaths registered classified by cause and age group**

Cause of Death	ICD-9 Code	65 COD Code	All Ages			Age Group									
			Persons	Males	Females	0-4	5-14	15-24	25-34	35-44	45-54	55-64	65-74	75-84	85 and over
<b>Total deaths</b>	001-999	00	6,535	3,416	3,119	67	18	139	145	178	366	676	1,083	2,091	1,772
<b>Infectious and parasitic diseases:-</b>	001-139, 279.8	01	52	32	20	3	-	1	1	3	3	6	6	17	12
Tuberculosis	010-018,137	02	9	5	4	-	-	-	-	1	1	1	1	4	1
Meningococcal infection	036	03	2	1	1	2	-	-	-	-	-	-	-	-	-
AIDS (HIV Disease)	042-044, 279.8	04	2	2	-	-	-	-	-	1	1	-	-	-	-
Viral Hepatitis	070	05	4	2	2	-	-	-	1	-	1	2	-	-	-
other infectious and parasitic diseases	Rem(001-139)		35	22	13	1	-	1	-	1	-	3	5	13	11
<b>Neoplasms</b>	140-239	06	1,865	971	894	-	5	7	16	38	136	325	478	587	273
<b>Malignant Neoplasms of the:-</b>	140-208	07	1,840	960	880	-	5	7	16	38	136	322	475	575	266
lip, oral cavity, pharynx	140-149	08	37	22	15	-	1	-	-	-	3	10	9	8	6
oesophagus	150	09	78	47	31	-	-	-	-	3	7	7	19	29	13
stomach	151	10	71	49	22	-	-	-	-	-	2	14	21	24	10
colon	153	11	129	67	62	-	-	1	1	1	5	10	31	49	31
rectum and anus	154	12	105	68	37	-	-	-	1	2	9	14	28	42	9
liver and the intrahepatic bile ducts	155	13	39	21	18	-	-	-	-	1	1	7	14	13	3
pancreas	157	14	81	36	45	-	-	-	-	2	6	18	24	17	14
larynx and trachea/bronchus/lung	161-162	15	412	254	158	-	-	-	-	3	26	94	130	125	34
skin	172	16	35	21	14	-	-	-	3	1	4	8	8	6	5
breast	174-175	17	157	2	155	-	-	-	-	8	18	38	42	31	20
cervix uteri	180	18	21	-	21	-	-	-	2	2	10	5	-	1	1
other parts of uterus	179,182	19	24	-	24	-	-	-	1	-	1	4	5	7	6
ovary	183.0	20	54	-	54	-	-	-	2	-	5	12	15	13	7
prostate	185	21	111	111	-	-	-	-	-	-	1	6	25	46	33
kidney	189.0	22	42	22	20	-	-	-	-	1	2	12	8	15	4
bladder	188	23	40	30	10	-	-	-	-	1	-	6	13	15	5
lymph/haematopoietic tissue	200-208	24	146	76	70	-	2	3	3	3	12	17	36	46	24
other malignant neoplasms	Rem(140-208)		258	134	124	-	2	3	3	10	24	40	47	88	41
Diseases of the blood and blood-forming organs, immunological disorders (excl 279.8)	279-289	25	27	15	12	-	-	-	1	1	3	1	4	10	7
Endocrine, Nutritional and metabolic diseases	240-278	26	139	68	71	1	-	2	-	1	6	5	26	65	33
Diabetes mellitus	250	27	93	51	42	-	-	-	-	-	3	2	21	44	23
Mental and behavioural disorders	290-319	28	149	75	74	-	-	8	12	10	10	10	6	36	57
Alcohol abuse (including alcoholic psychosis)	291,303	29	25	18	7	-	-	-	2	6	8	8	1	-	-
Drug dependence, toxicomania	304-305	30	24	20	4	-	-	8	9	4	1	1	1	-	-
Diseases of the nervous system and the sense organs	320-389	31	140	57	83	1	1	3	4	9	6	9	18	53	36
Meningitis	320-322	32	2	2	-	-	-	-	-	2	-	-	-	-	-
<b>Diseases of the Circulatory system:-</b>	390-459	33	2,228	1,164	1,064	2	-	5	17	24	94	172	332	791	791
Ischaemic heart disease (Acute myocardial infarction)	410-414 (410)	34	1,073	591	482	1	-	1	2	8	56	82	167	374	382
other heart disease	420-423, 425-429	35	608	344	264	-	-	1	1	4	30	49	103	210	210
Cerebrovascular disease	430-438	36	368	190	178	-	-	3	8	7	14	25	42	119	150
other diseases of circulatory system	Rem(390-459)		445	193	252	-	-	1	6	5	15	23	62	175	158
			342	190	152	1	-	-	1	4	9	42	61	123	101



<b>Diseases of the Respiratory system</b>	460-519	37	847	388	459	2	1	1	1	4	16	46	119	309	348
Influenza	487	38	-	-	-	-	-	-	-	-	-	-	-	-	-
Pneumonia	480-486	39	390	158	232	1	-	1	1	1	6	14	42	128	196
Chronic Lower respiratory disease	490-494,496	40	252	124	128	-	-	-	-	1	5	18	41	110	77
Asthma	493	41	14	6	8	-	-	-	-	-	2	-	4	6	2
other diseases of the respiratory system	Rem(460-519)		205	106	99	1	1	-	-	2	5	14	36	71	75
<b>Diseases of the Digestive system</b>	520-579	42	229	105	124	-	-	1	3	13	19	34	28	80	51
Ulcer of stomach, duodenum and jejunum	531-534	43	26	16	10	-	-	-	-	3	-	3	3	9	8
Chronic liver disease	571	44	56	31	25	-	-	-	2	8	17	16	7	6	-
other diseases of the digestive system	Rem(520-579)		147	58	89	-	-	1	1	2	2	15	18	65	43
Diseases of the skin and subcutaneous tissue	680-709	45	9	3	6	-	-	1	-	-	-	-	1	6	1
Diseases of the musculoskeletal system/connective tissue	710-739	46	40	16	24	-	-	-	-	-	3	6	4	15	12
Rheumatoid arthritis and osteoarthritis	714-715	47	23	8	15	-	-	-	-	-	1	3	3	10	6
Diseases of the genitourinary system	580-629	48	170	72	98	-	-	-	-	1	2	3	18	59	87
Diseases of the kidney and ureter	580-594	49	118	55	63	-	-	-	-	1	2	3	16	44	52
Complications of pregnancy, childbirth and puerperium	630-676	50	-	-	-	-	-	-	-	-	-	-	-	-	-
Certain conditions originating in the perinatal period <sup>2</sup>	760-779	51	31	23	8	31	-	-	-	-	-	-	-	-	-
Congenital malformations and chromosomal abnormalities	740-759	52	34	24	10	20	2	1	1	1	1	3	2	-	3
Congenital malformations of the:- nervous system	740-742	53	10	9	1	8	2	-	-	-	-	-	-	-	-
circulatory system	745-747	54	8	4	4	1	-	1	1	1	1	1	1	-	1
<b>Symptoms, signs, abnormal findings, ill-defined causes</b>	780-799	55	27	15	12	4	-	1	4	5	1	2	2	2	6
Sudden infant death syndrome	798.0	56	4	2	2	4	-	-	-	-	-	-	-	-	-
Unknown and unspecified causes	798.1-799.9	57	15	11	4	-	-	1	4	5	-	1	2	-	2
Injury and poisoning	800-999		548	388	160	3	9	108	85	68	66	54	39	61	55
<b>EXTERNAL CAUSES</b>															
External causes of injury and poisoning	E800-E999	58	594	420	174	3	9	115	93	73	72	59	41	73	56
Accidents	E800-E929	59	361	245	116	2	6	60	47	34	34	35	30	59	54
Transport accidents	E800-E848	60	110	82	28	-	3	41	24	10	3	8	7	12	2
Road transport accidents	E810-E829, E929.0		111	83	28	-	3	41	24	10	3	9	7	12	2
Motor vehicle transport accidents	E810-E819		109	81	28	-	3	41	24	10	3	8	6	12	2
Accidental falls	E880-E888	61	129	73	56	-	-	4	3	8	10	11	16	30	47
Accidental poisoning	E850-E869	62	52	38	14	-	1	10	9	8	13	5	2	3	1
other accidents	Rem(E800-E929)		69	51	18	2	2	5	11	8	8	10	5	14	4
Suicide and intentional self harm	E950-E959	63	143	114	29	-	1	37	28	28	24	14	6	4	1
Homicide, assault	E960-E969	64	28	21	7	-	2	6	9	4	6	-	1	-	-
Events of undetermined intent	E980-E989	65	57	40	17	1	-	12	9	7	8	10	4	6	-
All other external causes	Rem(E930-E999)		5	-	5	-	-	-	-	-	-	-	-	4	1

<sup>2</sup> Stillbirths not included

Table 9 Deaths registered, classified by principal cause<sup>1</sup>

Area of residence	Population according to the Census of Population 2006	Total deaths	cause of death :							
			Malignant Neoplasms of:							Diabetes
			151	150, 152-159	162	174-175	179-189	200-208	Rem. 140-208	
<b>LEINSTER</b>	2,295,123	3,261	39	226	215	83	155	75	166	37
Carlow	50,349	80	-	11	4	1	4	1	7	-
Dublin City	506,211	963	17	65	86	27	50	22	42	9
South Dublin	246,935	233	3	9	14	5	10	8	14	1
Fingal	239,992	151	-	16	10	6	9	4	11	-
Dun Laoghaire Rathdown	194,038	282	2	29	24	7	14	7	13	3
Kildare	186,335	212	1	9	7	5	9	7	14	5
Kilkenny	87,558	138	1	11	8	2	6	2	7	1
Laois	67,059	103	2	11	6	4	7	2	4	-
Longford	34,391	65	1	2	3	-	3	2	6	3
Louth	111,267	175	-	13	10	4	10	2	10	2
Meath	162,831	190	2	13	11	4	11	2	6	4
Offaly	70,868	85	2	2	3	1	5	4	2	-
Westmeath	79,346	155	2	6	6	6	5	4	9	2
Wexford	131,749	234	1	14	13	4	7	3	15	4
Wicklow	126,194	195	5	15	10	7	5	5	6	3
<b>MUNSTER</b>	1,173,340	1,952	15	154	112	50	91	40	73	41
Clare	110,950	180	2	16	8	7	3	1	7	2
Cork City	119,418	269	1	15	21	6	18	9	10	4
Cork County	361,877	511	3	39	26	16	23	14	20	12
Kerry	139,835	266	1	20	14	3	8	7	12	7
Limerick City	52,539	108	2	10	6	1	8	1	2	-
Limerick County	131,516	187	2	13	11	6	7	2	9	3
North Tipperary	66,023	119	2	11	9	4	3	1	3	3
South Tipperary	83,221	132	1	16	9	3	5	2	4	7
Waterford City	45,748	68	1	4	5	2	6	3	2	-
Waterford County	62,213	112	-	10	3	2	10	-	4	3
<b>CONNACHT</b>	504,121	850	10	62	45	18	41	16	38	9
Galway City	72,414	39	-	3	6	-	3	2	3	-
Galway County	159,256	317	4	24	15	8	13	6	13	3
Leitrim	28,950	44	-	-	1	-	-	-	2	2
Mayo	123,839	245	4	11	14	8	12	7	11	2
Roscommon	58,768	98	1	11	6	-	4	-	2	2
Sligo	60,894	107	1	13	3	2	9	1	7	-
<b>ULSTER (PART OF)</b>	267,264	472	7	33	27	6	20	15	8	6
Cavan	64,003	127	1	9	3	-	8	4	1	-
Donegal	147,264	255	6	17	20	4	12	9	6	4
Monaghan	55,997	90	-	7	4	2	-	2	1	2
<b>STATE</b>	4,239,848	6,535	71	475	399	157	307	146	285	93
<b>REGIONAL AUTHORITIES:</b>										
Border	468,375	798	8	59	41	12	39	18	27	10
Midland	251,664	408	7	21	18	11	20	12	21	5
West	414,277	699	9	49	41	16	32	15	29	7
Dublin	1,187,176	1,629	22	119	134	45	83	41	80	13
Mid-East	475,360	597	8	37	28	16	25	14	26	12
Mid-West	361,028	594	8	50	34	18	21	5	21	8
South-East	460,838	764	4	66	42	14	38	11	39	15
South-West	621,130	1,046	5	74	61	25	49	30	42	23

<sup>1</sup> See appendix for detailed description

## and area of residence of deceased

cause of death :												
Diseases of Circulatory System:				Diseases of Respiratory System:			Diseases of the digestive system	740-759	760-779	Injury and Poisoning:		Remainder
401-405	410-414	430-438	Rem. 390-459	480-486	466, 490-493, 496	Rem. 460-519				E810-E825	other	
43	500	203	291	206	131	123	125	16	11	56	213	347
1	9	3	4	4	2	7	2	-	-	1	9	10
15	133	59	87	55	36	33	34	1	2	7	76	107
3	37	11	24	10	6	13	7	3	-	4	17	34
1	24	8	11	7	6	4	10	-	2	-	9	13
3	31	25	23	28	9	10	12	1	-	2	15	24
3	39	13	18	15	9	6	6	1	1	10	9	25
1	17	7	23	6	10	4	5	-	1	2	8	16
1	16	7	5	7	7	2	2	-	-	4	4	12
1	14	2	3	7	1	1	2	1	-	2	5	6
1	30	7	11	18	8	11	10	-	-	6	10	12
3	24	11	19	11	5	8	9	4	2	7	13	21
1	15	4	5	4	6	6	3	-	-	2	8	12
4	21	9	18	11	5	7	5	4	1	2	9	19
4	55	18	19	13	12	6	8	1	2	4	13	18
1	35	19	21	10	9	5	10	-	-	3	8	18
34	355	140	180	111	69	48	63	11	11	32	137	185
3	25	9	16	14	8	3	6	-	4	6	14	26
3	51	19	21	16	9	8	10	1	1	1	21	24
8	104	28	42	28	13	13	14	2	2	10	47	47
6	48	26	27	18	13	3	8	2	1	1	16	25
2	13	8	14	11	1	4	6	-	-	3	7	9
2	34	17	20	12	9	6	6	-	-	5	9	14
2	25	10	12	3	5	4	7	1	-	1	5	8
6	19	4	10	4	5	3	2	2	1	4	7	18
-	15	2	11	2	3	1	1	-	-	1	2	7
2	21	17	7	3	3	3	3	3	2	-	9	7
6	131	70	108	45	32	25	27	2	3	10	62	90
1	4	3	2	2	1	-	1	-	-	1	-	7
1	55	20	41	13	13	10	12	1	1	4	26	34
-	7	7	7	5	4	-	1	-	-	-	3	5
2	38	22	28	11	9	9	8	1	1	2	23	22
-	16	6	12	8	3	4	2	-	1	2	8	10
2	11	12	18	6	2	2	3	-	-	1	2	12
6	87	32	42	28	14	15	14	5	6	10	28	63
2	27	13	12	5	2	3	4	2	1	4	7	19
2	44	13	20	17	8	8	10	2	4	4	16	29
2	16	6	10	6	4	4	-	1	1	2	5	15
89	1,073	445	621	390	246	211	229	34	31	108	440	685
9	135	58	78	57	28	28	28	5	6	17	43	92
7	66	22	31	29	19	16	12	5	1	10	26	49
4	113	51	83	34	26	23	23	2	3	9	57	73
22	225	103	145	100	57	60	63	5	4	13	117	178
7	98	43	58	36	23	19	25	5	3	20	30	64
9	97	44	62	40	23	17	25	1	4	15	35	57
14	136	51	74	32	35	24	21	6	6	12	48	76
17	203	73	90	62	35	24	32	5	4	12	84	96

**Table 10 Deaths registered of infants under 1 year, classified by cause, sex and age group**

Cause of Death	ICD-9 Code	Total under 1 day	1 day and under 7 days	1 week and under 4 weeks	4 weeks and under 1 year	Total	
						M	F
<b>ALL CAUSES</b>		19	13	10	16	41	17
Enteritis and other diarrhoeal diseases	008,009	-	-	-	-	-	-
Tuberculosis, all forms	010-018,137	-	-	-	-	-	-
Whooping cough	033	-	-	-	-	-	-
Other infective and parasitic diseases	Rem(001-139)	1	-	1	-	1	1
Meningitis	320-322	-	-	-	-	-	-
Other inflammatory diseases of the central nervous system	323-326	-	-	-	-	-	-
Pneumonia	480-486	-	-	-	-	-	-
Influenza	487	-	-	-	-	-	-
Other diseases of respiratory system	460-479, 494-519	-	-	-	-	-	-
Diseases of digestive system	520-579	-	-	-	-	-	-
Congenital anomalies:							
Anencephalus and similar anomalies	740	3	1	-	1	4	1
Spina Bifida	741	-	-	1	-	1	-
Other congenital anomalies of digestive system	742	1	-	-	1	2	-
Congenital anomalies of eye, ear, face and neck	743,744	-	-	-	-	-	-
Congenital anomalies of the heart	745,746	-	-	-	-	-	-
Other congenital anomalies of circulatory system	747	-	-	-	1	-	1
Congenital anomalies of respiratory system	748	-	-	-	-	-	-
Other congenital anomalies of upper alimentary tract inc. cleft palate and lip	749,750	-	-	-	-	-	-
Other congenital anomalies of digestive system	751	-	1	-	-	1	-
Congenital anomalies of genital organs	752	-	-	-	-	-	-
Congenital anomalies of urinary system	753	-	-	-	-	-	-
Congenital musculoskeletal deformities including limbs	754-756	-	-	-	1	1	-
Congenital anomalies of the integument	757	-	-	-	-	-	-
Chromosomal anomalies	758	1	1	1	1	3	1
Other and unspecified congenital anomalies	759	2	-	1	1	2	2
Fetus or newborn affected by maternal conditions, maybe unrelated to the pregnancy	760	1	-	-	-	1	-
Fetus or newborn affected by maternal complications of pregnancy	761	-	-	-	-	-	-
Fetus or newborn affected by complications of placenta, cord and membranes	762	5	3	-	-	5	3
Birth injury and difficult labour	763,767	1	-	-	-	-	1
Slow fetal growth and malnutrition	764	-	-	-	-	-	-
Disorders relating to short gestation and unspecified low birthweight	765	3	2	1	1	6	1
Disorders relating to long gestation and high birthweight	766	-	-	-	-	-	-
Intrauterine hypoxia and birth asphyxia	768	-	1	-	-	1	-
Respiratory distress syndrome	769	1	2	1	-	4	-
Other respiratory conditions of fetus and newborn	770	-	-	1	-	1	-
Infections specific to the perinatal period	771	-	1	1	1	2	1
Fetal and neo-natal haemorrhage	772	-	-	-	-	-	-
Haemolytic disease of newborn	773,774	-	-	-	-	-	-
Endocrine and metabolic disturbances specific to the fetus and newborn	775	-	-	-	1	1	-
Haematological disorders of fetus and newborn	776	-	-	-	-	-	-
Perinatal disorders of digestive system	777	-	1	-	1	1	1
Conditions involving the integument and temperature regulation of fetus and newborn	778	-	-	1	-	-	1
Other and ill-defined conditions originating in the perinatal period	779	-	-	-	1	1	-
Sudden death, cause unknown	798	-	-	1	3	2	2
Fractures	800-829	-	-	-	-	-	-
Intracranial and internal injuries, including nerves	850-869, 950-957	-	-	-	-	-	-
Burns	940-949	-	-	-	-	-	-
Poisonings and toxic effects	960-989	-	-	-	-	-	-
Other injuries and poisonings	Rem(800-999)	-	-	-	-	-	-
All other causes		-	-	-	2	1	1

**Table 11 Infant and neonatal mortality by area of residence of deceased**

Area of residence	Infant mortality		Neonatal mortality	
	Number	Rate	Number	Rate
<b>Leinster</b>	22	2.5	15	1.7
Carlow	0	0.0	0	0.0
Dublin City	4	2.6	2	1.3
South Dublin	1	1.0	1	1.0
Fingal	2	1.8	2	1.8
Dun Laoghaire Rathdown	1	1.8	0	0.0
Kildare	1	1.1	1	1.1
Kilkenny	1	3.8	1	3.8
Laois	0	0.0	0	0.0
Longford	0	0.0	0	0.0
Louth	0	0.0	0	0.0
Meath	6	8.9	2	3.0
Offaly	0	0.0	0	0.0
Westmeath	3	8.8	3	8.8
Wexford	3	6.0	3	6.0
Wicklow	0	0.0	0	0.0
<b>Munster</b>	20	4.7	14	3.3
Clare	4	10.4	4	10.4
Cork City	2	4.9	1	2.4
Cork County	3	2.1	2	1.4
Kerry	1	2.1	1	2.1
Limerick City	0	0.0	0	0.0
Limerick County	2	4.4	0	0.0
North Tipperary	1	4.1	1	4.1
South Tipperary	3	11.8	2	7.8
Waterford City	0	0.0	0	0.0
Waterford County	4	15.9	3	11.9
<b>Connacht</b>	5	3.0	4	2.4
Galway City	0	0.0	0	0.0
Galway County	1	1.7	1	1.7
Leitrim	0	0.0	0	0.0
Mayo	2	5.4	2	5.4
Roscommon	2	11.7	1	5.8
Sligo	0	0.0	0	0.0
<b>Ulster</b>	11	13.1	9	10.7
Cavan	3	11.7	3	11.7
Donegal	6	13.6	5	11.3
Monaghan	2	14.2	1	7.1
<b>State</b>	58	3.8	42	2.7
<b>REGIONAL AUTHORITIES:</b>				
Border	11	6.1	9	5.0
Midland	3	2.7	3	2.7
West	5	3.3	4	2.7
Dublin	8	1.7	5	1.1
Mid-East	7	3.1	3	1.3
Mid-West	7	4.8	5	3.4
South-East	11	5.8	9	4.7
South-West	6	2.6	4	1.8

Infant mortality rates: Deaths of infants under one year per 1,000 live births, classified by area of residence of mother

Neonatal mortality rates: Deaths of infants under 28 days per 1,000 live births, classified by area of residence of mother

Infant and neonatal mortality rates in some areas, based on small numbers are subject to considerable fluctuation and caution should be exercised in their interpretation

Table 12 Deaths by quarter of registration and principal cause

Quarter	Malignant Neoplasms of :							Diabet- es mellitus	Diseases of Circulatory System				Diseases of Respiratory System			Diseas- es of the digestive system	Congeni- tal anomali- es	Certain causes of perinatal mortality	Injury and Poisoning		Other	
	Stom- ach	Digestive organs and peritone- um	Trachea, Bronchus and lung	Breast	Genito- urinary organs	Lymphat- ic and haemat- opoietic tissue	Other		Hyper- tensi- ve disea- se	Ischa- emic heart disea- se	Cerebro- vascular disease	Other	Pneumo- nia	Bronchitis, emphysis- ema & asthma, incl. chronic obstructi- ve airways disease	Other				Motor vehicle accidents incl. non-traff- ic accidents	Other		
	151	150, 152-159	162	174- 175	179-189	200-208	Rem (140- 208)	250	401- 405	410- 414	430-438	Rem (390- 459)	480-486	466, 490-493, 496	Rem (460- 519)	520-579	740-759	760-779	E810- E825	Rem (800- 999)	Rem (001- 999)	
<b>1st Quarter</b>																						
2001	85	540	419	207	307	183	299	124	72	1,868	730	854	731	464	244	230	44	35	62	192	718	
2002	70	479	392	159	326	186	301	125	64	1,673	665	788	646	420	190	287	49	26	26	151	726	
2003	108	511	425	159	324	176	282	103	72	1,650	626	764	659	447	203	268	44	26	47	162	700	
2004	73	548	439	161	349	193	294	141	91	1,554	626	828	664	475	217	264	41	37	36	120	722	
2005	85	488	402	167	320	168	276	106	90	1,400	597	731	618	438	191	260	35	36	39	139	766	
2006	77	508	433	209	370	194	272	145	98	1,356	526	685	601	371	236	255	39	24	41	102	778	
<b>2nd Quarter</b>																						
2001	78	465	309	141	293	134	288	98	67	1,501	679	746	593	361	175	250	47	30	76	246	683	
2002	83	496	371	132	332	196	258	113	76	1,591	619	760	563	389	205	255	53	29	105	311	743	
2003	71	474	379	147	306	173	268	102	64	1,461	608	667	543	365	214	264	54	27	63	278	675	
2004	79	533	355	170	319	154	282	111	71	1,358	482	679	474	335	168	238	44	31	72	277	649	
2005	95	518	399	182	349	158	293	132	89	1,407	524	723	544	357	209	241	53	28	58	230	760	
2006	93	507	391	161	351	163	295	146	103	1,255	479	615	499	359	195	247	40	30	77	203	758	
<b>3rd Quarter</b>																						
2001	94	521	363	170	319	179	277	81	55	1,430	596	653	456	326	141	249	40	41	90	270	623	
2002	80	513	380	164	315	143	318	87	55	1,481	560	657	447	292	158	252	53	23	88	253	622	
2003	83	512	399	159	308	126	273	104	69	1,250	485	631	470	277	152	247	51	34	85	286	638	
2004	70	516	378	171	341	164	288	106	71	1,259	478	657	402	260	149	222	51	20	41	169	660	
2005	75	512	374	184	328	153	275	106	77	1,147	452	605	401	237	149	246	43	15	67	280	654	
2006	84	554	385	147	354	184	296	132	75	1,176	454	613	423	283	164	281	49	25	59	261	658	
<b>4th Quarter</b>																						
2001	77	495	392	172	313	163	294	96	48	1,350	603	662	451	308	162	287	53	26	129	391	698	
2002	99	472	331	157	316	150	280	89	61	1,337	549	659	519	317	184	233	51	33	120	327	694	
2003	79	529	384	170	319	155	269	101	83	1,287	536	731	521	382	195	227	55	18	100	334	750	
2004	73	463	396	151	295	167	295	96	79	1,246	499	630	423	308	185	236	45	37	112	414	774	
2005	82	456	388	148	306	164	269	114	68	1,110	456	508	350	270	191	243	40	24	105	385	683	
2006	71	475	399	157	307	146	285	93	89	1,073	445	621	390	246	211	229	34	31	108	440	685	
<b>Year</b>																						
2001	334	2,021	1,483	690	1,232	659	1,158	399	242	6,149	2,608	2,915	2,231	1,459	722	1,016	184	132	357	1,099	2,722	
2002	332	1,960	1,474	612	1,289	675	1,157	414	256	6,082	2,393	2,864	2,175	1,418	737	1,027	206	111	339	1,042	2,785	
2003	341	2,026	1,587	635	1,257	630	1,092	410	288	5,648	2,255	2,793	2,193	1,471	764	1,006	204	105	295	1,060	2,763	
2004	295	2,060	1,568	653	1,304	678	1,159	454	312	5,417	2,085	2,794	1,963	1,378	719	960	181	125	261	980	2,805	
2005	337	1,974	1,563	681	1,303	643	1,113	458	324	5,064	2,029	2,567	1,913	1,302	740	990	171	103	269	1,034	2,863	
2006	325	2,044	1,608	674	1,382	687	1,148	516	365	4,860	1,903	2,534	1,913	1,259	806	1,012	162	110	285	1,007	2,879	

## **Yearly Summary 2006**

# Yearly Summary 2006

## Commentary

### Introduction

This report has been prepared by the Central Statistics Office for the Minister for Health and Children in accordance with the provisions of Section 2 of the Vital Statistics and Births, Deaths and Marriages Registration Act, 1952 and Section 73 of the Civil Registration Act 2004.

### Births

There were 64,237 births registered in 2006, 33,085 males and 31,152 females, an increase of 3,195 on 2005. The 2006 total is 23% higher than in 1997 when 52,311 babies were registered.

This represents an annual birth rate of 15.2 per 1,000 of the population, 0.4 above 2006. This rate is 0.9 per 1,000 population higher than in 1997.

### Fertility

The total period fertility rate, TPF<sub>R</sub> is derived from the age specific fertility rates in the current year. It represents the projected number of children a woman would have if she experienced current age specific fertility rates while progressing from age 15-49 years. A value of 2.1 is generally considered to be the level at which the population would replace itself in the long run, ignoring migration.

In 2006 the TPF<sub>R</sub> for Ireland was 1.90 and is below replacement level. (See table 1).

### Birth order

A total of 26,234 births (41%) were to first time mothers in 2006. Second time mothers had 20,461 births (32%) (See Table 3). This compares to 20,094 (38.5%) first births registered in 1997.

### Births outside marriage

There were 21,295 births registered as outside marriage in 2006. This accounted for 33.2% of all births, an increase of 1.2% on 2005.

The highest percentage of births outside marriage occurred in Limerick City at 57.2%, while the lowest percentage was in Galway County at 21.9% (see Table 6).

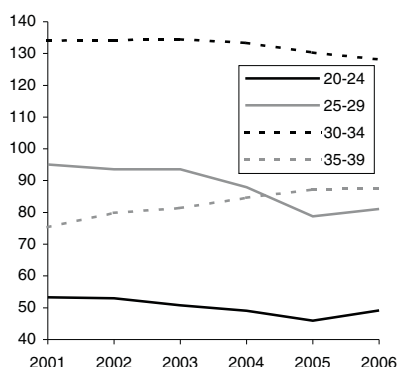
In 1997, 13,892 births were registered outside marriage or 26.6% of all births.

A total of 2,362 teenagers had babies last year, 48 of these were aged under 16. Almost 30% of births outside marriage were to women aged 30 years and over.

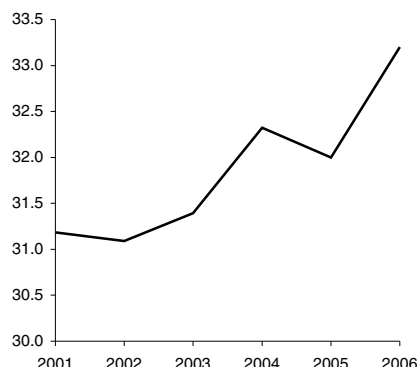
### Average age at maternity in years

	Total births	First births
All births	31.0	28.7
Inside marriage	32.9	31.4
Outside marriage	27.1	25.2

Age specific fertility rates - live births per 1,000 females



Percentage of births outside marriage





## Deaths

There were 27,479 deaths registered in 2006, 14,111 males and 13,368 females, an increase of 38 on the 2005 figure. The 2006 total is 13% lower than in 1997 when 31,605 deaths were registered.

This represents an annual death rate of 6.5 per 1,000 population, 0.1 below 2005. This rate is 2.1 per 1,000 population lower than in 1997.

### Age at death

There were 237 infant deaths registered in 2006, a decrease of 7 on the 2005 figure. Neonatal deaths are deaths of infants at ages under 4 weeks. There were 168 neonatal deaths registered in 2006, a decrease of 9 on the 2005 figure.

In 2006 the infant mortality rate of 3.7 per 1,000 live births was 0.3 lower than in 2005. This rate is 2.5 per 1,000 live births lower than in 1997. The neonatal mortality rate per 1,000 live births in 2006 was 2.6, 0.3 below 2005 and 1.1 below 1997.

There were 21,620 deaths of persons aged 65 and over registered in 2006, an increase of 128 on the 2005 figure. The 2006 total is 13.8% lower than in 1997 when 25,093 deaths were registered.

This represents an annual death rate of 46.2 per 1,000 population aged 65 and over, 0.5 below 2005. This rate is 14.1 per 1,000 population aged 65 and over lower than in 1997.

### Cause of death

- **Diseases of the Circulatory System:**

Diseases of the Circulatory System accounted for 9,662 deaths, or an annual rate of 2.3 per 1,000 population. Of these, 4,860 were due to Ischaemic Heart Disease and 1,903 to Cerebrovascular Disease.

- **Malignant Neoplasms:**

There were 7,868 deaths from malignant neoplasms. This is equivalent to an annual rate of 1.9 per 1,000 population. Of these, 954 were due to malignant neoplasms of the colon, rectum and anus and 1,683 to malignant neoplasms of the larynx and trachea, bronchus and lung.

- **Diseases of the Respiratory System:**

Deaths from pneumonia numbered 1,913; chronic bronchitis, emphysema and asthma (including chronic obstructive airways disease) accounted for 1,259 deaths; 806 deaths resulted from other respiratory diseases.

- **Motor Vehicle Accidents**

There were 285 deaths from injuries received in motor vehicle accidents (including non-traffic accidents).

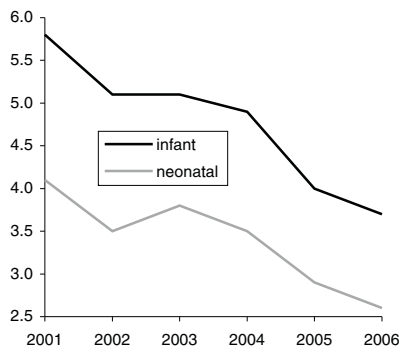
- **Suicides**

There were 409 deaths from suicide, a decrease of 22 on 2005. There were 66 deaths due to events of undetermined intent, a decrease of 25 on 2005.

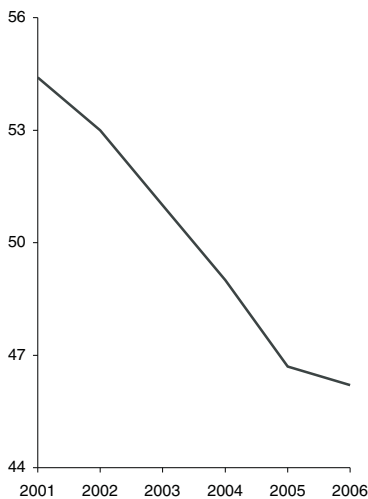
- **Late Registered Deaths**

Deaths which have been registered within one year of occurrence can be registered only on the authority of an tArd Chlaraitheoir (Registrar General). The number of such deaths registered in 2006 was 708. Table 2 in the appendix of the report contains an analysis of these deaths.

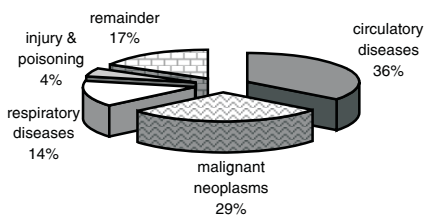
**Infant and neonatal mortality rates per 1,000 live births**



**Death rates for ages 65 & over per 1,000 relevant population**



**Principal causes of death**



**Marriages**

The number of marriages registered during the quarter was 21,841 equivalent to an annual marriage rate of 5.2 per 1,000 population, the same as 2005. The 2006 total is 39.7% higher than in 1997 when 15,631 marriages were registered.

**Divorces**

The number of divorces granted in 2006 by the Circuit Court and the High Court was 3,466 an increase of 33 on the 2005 figure. (*see table 12*)

**Population**

The total from the Census of Population 2006 was 4,239,848.

**Methodology**

All figures in this report are classified by year of registration. Deaths are coded according to the 9th Revision of the International Statistical Classification of Diseases, Injuries and Causes of Death.

**Table 1 Births registered, classified by age of mother at maternity between 2004 and 2006 and their corresponding annual age specific (asfr) and total period fertility rates (tpfr)**

Period	Under 20	20-24	25-29	30-34	35-39	40-44	45&over	Age not stated	All ages
<b>Number of live births</b>									
<b>Quarter 1</b>									
2004	751	2147	3564	5263	3175	557	25	117	15599
2005	639	2076	3421	5226	3264	634	13	61	15334
2006	649	2186	3660	5444	3331	646	22	20	15958
<b>Quarter 2</b>									
2004	627	2005	3595	5499	3121	558	20	110	15535
2005	598	1886	3336	5386	3414	643	25	18	15306
2006	555	1997	3620	5580	3531	671	21	4	15979
<b>Quarter 3</b>									
2004	615	2078	3681	5394	3158	540	15	124	15605
2005	650	2069	3736	5664	3400	615	19	17	16170
2006	598	2188	3940	5776	3700	690	23	5	16920
<b>Quarter 4</b>									
2004	567	1983	3499	5111	3090	592	18	85	14945
2005	540	1754	3157	5059	3130	560	17	15	14232
2006	560	1974	3671	5202	3294	641	32	6	15380
<b>Total</b>									
2004	2560	8213	14339	21267	12544	2247	78	436	61684
2005	2427	7785	13650	21335	13208	2452	74	111	61042
2006	2362	8345	14891	22002	13856	2648	98	35	64237
<b>Live births per 1,000 relevant female population (ASFR)</b>									<b>TPFR</b>
<b>Quarter 1</b>									
2004	20.2	51.6	90.3	135.8	86.5	16.0	0.8		2.01
2005	17.5	49.5	83.6	130.8	87.7	17.8	0.4		1.94
2006	18.0	51.5	50.5	132.9	87.9	17.7	0.7		1.80
<b>Quarter 2</b>									
2004	17.2	47.9	88.1	138.0	84.2	15.7	0.6		1.96
2005	16.6	44.4	77.0	131.5	90.1	17.6	0.8		1.89
2006	15.6	47.1	78.8	129.9	89.2	17.9	0.6		1.90
<b>Quarter 3</b>									
2004	16.9	49.7	90.3	135.5	85.2	15.2	0.5		1.97
2005	18.0	48.7	86.2	138.3	89.7	16.9	0.6		1.99
2006	16.9	51.6	85.8	134.4	93.5	18.4	0.7		2.01
<b>Quarter 4</b>									
2004	15.5	47.3	85.7	128.1	83.2	16.7	0.6		1.89
2005	15.0	41.3	72.9	123.5	82.6	15.3	0.5		1.76
2006	15.8	46.5	79.9	121.1	83.3	17.1	0.9		1.82
<b>Total</b>									
2004	17.6	49.1	87.9	133.4	84.6	15.8	0.6		1.95
2005	16.8	45.9	78.8	130.3	87.2	16.8	0.6		1.88
2006	16.6	49.2	81.1	128.1	87.6	17.7	0.7		1.90

**Table 2 Births registered, classified by sex and age of mother at maternity showing the number of births outside marriage**

Age of mother at maternity	Total births (including births outside marriage)			Births outside marriage		
	Males	Females	Total	Males	Females	Total
15 and under	23	25	48	23	25	48
16	76	85	161	74	83	157
17	182	186	368	174	177	351
18	358	319	677	335	296	631
19	607	501	1,108	549	466	1,015
Under 20	1,246	1,116	2,362	1,155	1,047	2,202
20	693	632	1,325	596	555	1,151
21	752	652	1,404	623	546	1,169
22	864	796	1,660	692	631	1,323
23	958	909	1,867	719	680	1,399
24	1,078	1,011	2,089	769	704	1,473
20-24	4,345	4,000	8,345	3,399	3,116	6,515
25	1,172	1,158	2,330	718	733	1,451
26	1,304	1,308	2,612	645	673	1,318
27	1,608	1,454	3,062	706	630	1,336
28	1,666	1,591	3,257	566	565	1,131
29	1,866	1,764	3,630	500	503	1,003
25-29	7,616	7,275	14,891	3,135	3,104	6,239
30	2,101	1,892	3,993	495	431	926
31	2,389	2,149	4,538	502	395	897
32	2,431	2,149	4,580	409	358	767
33	2,255	2,219	4,474	328	330	658
34	2,250	2,167	4,417	322	306	628
30-34	11,426	10,576	22,002	2,056	1,820	3,876
35	1,996	1,930	3,926	285	262	547
36	1,748	1,739	3,487	249	235	484
37	1,394	1,326	2,720	196	181	377
38	1,053	1,075	2,128	164	148	312
39	838	757	1,595	121	120	241
35-39	7,029	6,827	13,856	1,015	946	1,961
40	554	540	1,094	83	88	171
41	356	360	716	61	55	116
42	241	223	464	56	42	98
43	136	109	245	25	31	56
44	61	68	129	11	19	30
40-44	1,348	1,300	2,648	236	235	471
45 and over	53	45	98	9	9	18
Age not stated	22	13	35	7	6	13
2006	33,085	31,152	64,237	11,012	10,283	21,295
2005	31,369	29,673	61,042	10,008	9,520	19,528
2004	31,817	29,867	61,684	10,283	9,655	19,938
2003	31,414	30,103	61,517	9,917	9,396	19,313
2002	31,001	29,520	60,521	9,637	9,178	18,815
2001	29,753	28,129	57,882	9,281	8,768	18,049
2000	27,896	26,343	54,239	8,935	8,300	17,235
1999	27,508	25,846	53,354	8,562	7,899	16,461
1998	27,580	25,971	53,551	7,696	7,437	15,133
1997	26,855	25,456	52,311	7,011	6,881	13,892

**Table 3 Births registered, classified by age of mother at maternity and previous number of liveborn children**

Age of mother at maternity	Previous number of liveborn children												
	Total	0	1	2	3	4	5	6	7	8	9	10 or more	Not stated
15 and under	48	47	1	-	-	-	-	-	-	-	-	-	-
16	161	159	2	-	-	-	-	-	-	-	-	-	-
17	368	343	23	-	1	-	-	-	-	-	-	-	1
18	677	622	52	2	-	-	-	-	-	-	-	-	1
19	1,108	983	114	6	1	-	-	-	-	-	-	-	4
Under 20	2,362	2,154	192	8	2	-	-	-	-	-	-	-	6
20	1,325	1,039	238	41	4	-	-	-	-	-	-	-	3
21	1,404	1,016	324	50	11	2	-	-	-	-	-	-	1
22	1,660	1,103	431	97	22	3	-	-	-	-	-	-	4
23	1,867	1,072	578	163	41	5	-	1	-	-	-	-	7
24	2,089	1,166	645	219	44	9	2	2	-	-	-	-	2
20-24	8,345	5,396	2,216	570	122	19	2	3	-	-	-	-	17
25	2,330	1,140	819	242	87	24	8	1	-	-	-	-	9
26	2,612	1,202	880	360	112	36	9	1	-	-	-	-	12
27	3,062	1,479	987	396	133	44	13	5	-	-	-	-	5
28	3,257	1,537	1,056	428	151	48	22	4	2	-	-	1	8
29	3,630	1,665	1,206	482	170	61	20	9	-	-	-	-	17
25-29	14,891	7,023	4,948	1,908	653	213	72	20	2	-	-	1	51
30	3,993	1,746	1,349	589	186	71	22	10	1	-	-	-	19
31	4,538	1,824	1,565	737	251	85	28	10	9	2	2	-	25
32	4,580	1,725	1,650	782	269	78	29	16	3	1	-	-	27
33	4,474	1,451	1,662	916	279	93	34	10	5	-	1	1	22
34	4,417	1,272	1,611	981	351	102	44	15	8	7	-	2	24
30-34	22,002	8,018	7,837	4,005	1,336	429	157	61	26	10	3	3	117
35	3,926	1,024	1,364	1,011	356	94	27	16	9	2	3	-	20
36	3,487	802	1,196	932	356	115	37	14	8	6	-	3	18
37	2,720	564	843	776	357	106	32	14	5	4	2	1	16
38	2,128	419	670	566	305	94	36	13	5	3	3	3	11
39	1,595	288	442	474	227	94	35	20	4	3	-	2	6
35-39	13,856	3,097	4,515	3,759	1,601	503	167	77	31	18	8	9	71
40	1,094	205	289	283	174	75	34	20	8	-	-	3	3
41	716	143	196	172	103	55	17	8	12	3	1	1	5
42	464	103	127	90	63	43	14	13	2	4	-	-	5
43	245	39	67	58	38	17	12	5	3	-	2	1	3
44	129	25	33	24	18	16	5	3	1	2	1	1	-
40-44	2,648	515	712	627	396	206	82	49	26	9	4	6	16
45 and over	98	21	29	16	12	10	2	1	4	2	-	1	-
Age not stated	35	10	12	9	1	1	-	-	1	-	-	-	1
2006	64,237	26,234	20,461	10,902	4,123	1,381	482	211	90	39	15	20	279
2005	61,042	24,621	19,430	10,603	3,927	1,330	496	189	79	43	23	15	286
2004	61,684	24,125	19,735	10,451	4,070	1,284	502	226	94	46	19	20	1,112
2003	61,517	24,376	19,535	10,373	4,011	1,433	557	218	87	34	17	26	850
2002	60,521	24,307	18,806	10,318	4,149	1,446	533	233	105	55	24	28	537
2001	57,882	23,394	17,861	9,666	4,123	1,424	584	246	128	47	34	37	341
2000	58,239	21,997	16,251	9,388	3,876	1,401	554	250	123	45	28	41	285
1999	53,354	21,564	15,995	9,206	3,853	1,452	607	257	117	46	28	39	190
1998	53,551	20,995	16,116	9,478	4,120	1,456	620	267	140	63	37	55	207
1997	52,311	20,094	15,634	9,383	4,163	1,603	677	323	155	78	50	50	92

**Table 4 Births registered classified by area of residence and age of mother**

Area of residence	Under 20	20-24	25-29	30-34	35-39	40 and over	Age not stated	All ages	Average age of mother at maternity	
									Total	First
<b>LEINSTER</b>	1,409	4,909	8,469	12,173	7,565	1,468	8	36,001	30.8	28.6
Carlow	37	135	225	272	142	36	-	847	30.2	27.7
Dublin City	362	1,130	1,470	1,889	1,286	307	2	6,446	30.3	28.2
South Dublin	213	703	1,112	1,352	790	134	1	4,305	30.0	28.0
Fingal	124	527	1,108	1,711	975	167	-	4,612	31.1	29.4
Dun Laoghaire Rathdown	70	202	333	756	731	168	-	2,260	32.8	30.5
Kildare	102	397	758	1,288	736	124	-	3,405	31.2	29.0
Kilkenny	34	141	263	431	279	49	-	1,197	31.3	29.2
Laois	37	160	263	370	194	36	-	1,060	30.5	28.0
Longford	29	86	140	161	122	26	-	564	30.6	27.9
Louth	65	246	453	567	309	63	-	1,703	30.4	27.8
Meath	70	238	717	1,153	626	101	2	2,907	31.5	29.3
Offaly	45	158	274	370	213	41	1	1,102	30.6	27.9
Westmeath	58	182	330	455	276	58	2	1,361	30.7	28.0
Wexford	94	342	540	653	425	66	-	2,120	30.3	27.6
Wicklow	69	262	483	745	461	92	-	2,112	31.2	29.2
<b>MUNSTER</b>	592	2,154	3,959	6,111	3,889	752	11	17,468	31.2	28.7
Clare	56	170	374	632	424	83	2	1,741	31.7	29.3
Cork City	106	284	383	491	312	61	1	1,638	29.9	27.3
Cork County	124	482	1,209	2,264	1,369	237	3	5,688	31.9	29.7
Kerry	31	238	408	605	418	87	2	1,789	31.5	28.9
Limerick City	66	183	187	205	109	24	-	774	28.7	25.7
Limerick County	68	241	442	681	446	82	2	1,962	31.1	28.8
North Tipperary	27	135	243	359	235	57	-	1,056	31.3	29.1
South Tipperary	37	176	272	313	220	46	1	1,065	30.6	28.2
Waterford City	39	122	175	162	105	14	-	617	29.2	26.8
Waterford County	38	123	266	399	251	61	-	1,138	31.4	28.7
<b>CONNACHT</b>	199	796	1,491	2,505	1,660	364	13	7,028	31.6	29.2
Galway City	28	139	195	289	181	44	9	885	30.8	28.4
Galway County	59	220	508	965	631	132	4	2,519	32.0	29.9
Leitrim	10	63	83	133	90	17	-	396	31.2	28.3
Mayo	50	197	366	543	385	82	-	1,623	31.4	28.8
Roscommon	14	81	150	293	179	45	-	762	31.9	29.5
Sligo	38	96	189	282	194	44	-	843	31.3	28.7
<b>ULSTER (PART OF)</b>	162	486	972	1,213	742	162	3	3,740	30.7	27.9
Cavan	36	108	259	344	199	43	1	990	31.0	28.4
Donegal	106	288	539	642	403	87	2	2,067	30.5	27.5
Monaghan	20	90	174	227	140	32	-	683	31.0	28.5
<b>STATE</b>	2,362	8,345	14,891	22,002	13,856	2,746	35	64,237	31.0	28.7
<b>REGIONAL AUTHORITIES:</b>										
Border	275	891	1,697	2,195	1,335	286	3	6,682	30.7	28.0
Midland	169	586	1,007	1,356	805	161	3	4,087	30.6	28.0
West	151	637	1,219	2,090	1,376	303	13	5,789	31.7	29.3
Dublin	769	2,562	4,023	5,708	3,782	776	3	17,623	30.8	28.8
Mid-East	241	897	1,958	3,186	1,823	317	2	8,424	31.3	29.1
Mid-West	217	729	1,246	1,877	1,214	246	4	5,533	31.0	28.5
South-East	279	1,039	1,741	2,230	1,422	272	1	6,984	30.6	28.0
South-West	261	1,004	2,000	3,360	2,099	385	6	9,115	31.4	29.1

**Table 5 Births registered outside marriage, classified by area of residence and age of mother**

Area of residence	Under 25	25-29	30-34	35-39	40 and over	Age not stated	All ages	Average age of mother at maternity	
								Total	First
LEINSTER	5,139	3,834	2,354	1,207	284	3	12,821	27.2	25.4
Carlow	140	87	56	24	8	-	315	26.8	24.5
Dublin City	1,238	827	594	312	81	1	3,053	27.4	25.4
South Dublin	755	536	289	138	28	-	1,746	26.6	24.8
Fingal	492	462	306	132	32	-	1,424	27.8	26.5
Dun Laoghaire Rathdown	232	180	123	100	23	-	658	28.3	26.7
Kildare	385	309	209	69	20	-	992	27.1	25.2
Kilkenny	153	114	53	35	10	-	365	26.9	25.1
Laois	155	93	53	23	3	-	327	26.3	24.3
Longford	78	60	24	18	2	-	182	26.5	24.6
Louth	264	228	111	55	17	-	675	27.1	25.0
Meath	253	250	157	79	10	1	750	27.6	25.7
Offaly	171	105	50	30	11	-	367	26.6	24.2
Westmeath	183	125	72	47	10	1	438	27.1	25.0
Wexford	359	244	121	63	8	-	795	26.4	24.5
Wicklow	281	214	136	82	21	-	734	27.7	26.2
MUNSTER	2,290	1,608	1,002	487	128	5	5,520	27.1	25.1
Clare	180	133	88	42	9	-	452	27.2	25.2
Cork City	336	205	132	68	13	1	755	26.6	24.5
Cork County	502	415	283	144	44	2	1,390	27.8	25.9
Kerry	207	160	96	63	16	1	543	27.9	25.9
Limerick City	217	116	86	17	7	-	443	26.0	23.5
Limerick County	253	151	85	37	9	1	536	26.2	24.5
North Tipperary	138	95	53	29	8	-	323	27.0	24.5
South Tipperary	179	115	55	26	5	-	380	26.5	24.7
Waterford City	138	94	42	20	4	-	298	26.2	24.3
Waterford County	140	124	82	41	13	-	400	27.8	25.6
CONNACHT	772	491	338	172	52	2	1,827	27.2	25.5
Galway City	122	85	60	30	6	1	304	27.3	25.3
Galway County	214	150	109	60	18	1	552	27.7	25.9
Leitrim	51	23	12	5	2	-	93	25.9	24.6
Mayo	199	114	70	38	14	-	435	26.8	25.3
Roscommon	78	36	41	15	8	-	178	27.6	25.8
Sligo	108	83	46	24	4	-	265	27.0	25.2
ULSTER (PART OF)	516	306	182	95	25	3	1,127	26.6	24.4
Cavan	114	94	48	22	6	1	285	26.9	24.8
Donegal	312	161	102	54	16	2	647	26.3	24.1
Monaghan	90	51	32	19	3	-	195	26.9	24.8
STATE	8,717	6,239	3,876	1,961	489	13	21,295	27.1	25.3
REGIONAL AUTHORITIES:									
Border	939	640	351	179	48	3	2,160	26.7	24.7
Midland	587	383	199	118	26	1	1,314	26.6	24.6
West	613	385	280	143	46	2	1,469	27.4	25.6
Dublin	2,717	2,005	1,312	682	164	1	6,881	27.3	25.6
Mid-East	919	773	502	230	51	1	2,476	27.4	25.7
Mid-West	788	495	312	125	33	1	1,754	26.5	24.4
South-East	1,109	778	409	209	48	-	2,553	26.7	24.8
South-West	1,045	780	511	275	73	4	2,688	27.5	25.5

**Table 6 Births registered, classified by area of occurrence and by area of residence of mother, showing the percentage of births outside marriage**

	Area of occurrence	Area of residence of mother				Percentage of births outside marriage
		Males	Females	Total	Rate <sup>(a)</sup>	
LEINSTER	35,289	18,357	17,644	36,001	15.7	35.6
Carlow	1	453	394	847	16.8	37.2
Dublin City	22,700	3,326	3,120	6,446	12.7	47.4
South Dublin	-	2,189	2,116	4,305	17.4	40.6
Fingal	-	2,323	2,289	4,612	19.2	30.9
Dun Laoghaire Rathdown	1,221	1,131	1,129	2,260	11.6	29.1
Kildare	13	1,724	1,681	3,405	18.3	29.1
Kilkenny	1,601	618	579	1,197	13.7	30.5
Laois	1,714	557	503	1,060	15.8	30.8
Longford	31	263	301	564	16.4	32.3
Louth	3,706	859	844	1,703	15.3	39.6
Meath	3	1,468	1,439	2,907	17.9	25.8
Offaly	1	593	509	1,102	15.6	33.3
Westmeath	2,305	702	659	1,361	17.2	32.2
Wexford	2,009	1,088	1,032	2,120	16.1	37.5
Wicklow	14	1,063	1,049	2,112	16.7	34.8
MUNSTER	17,509	9,097	8,371	17,468	14.9	31.6
Clare	7	908	833	1,741	15.7	26.0
Cork City	7,764	857	781	1,638	13.7	46.1
Cork County	25	2,935	2,753	5,688	15.7	24.4
Kerry	1,573	922	867	1,789	12.8	30.4
Limerick City	4,668	393	381	774	14.7	57.2
Limerick County	-	1,045	917	1,962	14.9	27.3
North Tipperary	1	572	484	1,056	16.0	30.6
South Tipperary	1,018	548	517	1,065	12.8	35.7
Waterford City	2,451	320	297	617	13.5	48.3
Waterford County	1	597	541	1,138	18.3	35.1
CONNACHT	8,116	3,666	3,362	7,028	13.9	26.0
Galway City	3,203	472	413	885	12.2	34.4
Galway County	1,846	1,278	1,241	2,519	15.8	21.9
Leitrim	-	217	179	396	13.7	23.5
Mayo	1,603	852	771	1,623	13.1	26.8
Roscommon	2	388	374	762	13.0	23.4
Sligo	1,462	459	384	843	13.8	31.4
ULSTER (PART OF)	3,323	1,965	1,775	3,740	14.0	30.1
Cavan	1,465	531	459	990	15.5	28.8
Donegal	1,857	1,079	988	2,067	14.0	31.3
Monaghan	1	355	328	683	12.2	28.6
STATE	64,237	33,085	31,152	64,237	15.2	33.2
REGIONAL AUTHORITIES:						
Border	8,491	3,500	3,182	6,682	14.3	32.3
Midland	4,021	2,115	1,972	4,087	16.2	32.2
West	6,654	2,990	2,799	5,789	14.0	25.4
Dublin	23,921	8,969	8,654	17,623	14.8	39.0
Mid-East	30	4,255	4,169	8,424	17.7	29.4
Mid-West	4,676	2,918	2,615	5,533	15.3	31.7
South-East	7,082	3,624	3,360	6,984	15.2	36.6
South-West	9,362	4,714	4,401	9,115	14.7	29.5

(a) Rate per 1,000 Population



**Table 7 Deaths registered, classified by area of occurrence and area of residence of deceased, showing the number aged 65 and over**

	Area of occurrence	Area of residence of deceased				Persons 65 years and over
		Males	Females	Total	Rate <sup>(a)</sup>	
<b>LEINSTER</b>	13,176	6,616	6,661	13,277	5.8	10,247
Carlow	338	162	148	310	6.2	246
Dublin City	<sup>(b)</sup>	2,001	2,174	4,175	8.2	3,292
South Dublin	<sup>(b)</sup>	414	403	817	3.3	524
Fingal	<sup>(b)</sup>	370	355	725	3.0	494
Dun Laoghaire Rathdown	<sup>(b)</sup>	499	621	1,120	5.8	924
Kildare	912	430	389	819	4.4	601
Kilkenny	492	285	258	543	6.2	430
Laois	364	220	183	403	6.0	326
Longford	206	129	116	245	7.1	201
Louth	874	365	353	718	6.5	565
Meath	599	422	341	763	4.7	566
Offaly	390	213	207	420	5.9	344
Westmeath	495	265	243	508	6.4	409
Wexford	896	467	448	915	6.9	721
Wicklow	737	374	422	796	6.3	604
<b>MUNSTER</b>	8,512	4,353	4,070	8,423	7.2	6,673
Clare	699	441	372	813	7.3	629
Cork City	2,189	539	515	1,054	8.8	823
Cork County	1,096	1,181	1,032	2,213	6.1	1,733
Kerry	1,124	593	538	1,131	8.1	926
Limerick City	952	187	228	415	7.9	317
Limerick County	412	436	437	873	6.6	713
North Tipperary	532	288	275	563	8.5	463
South Tipperary	660	291	314	605	7.3	482
Waterford City	609	136	126	262	5.7	202
Waterford County	239	261	233	494	7.9	385
<b>CONNACHT</b>	3,859	2,080	1,677	3,757	7.5	3,055
Galway City	1,052	86	78	164	2.3	131
Galway County	566	752	587	1,339	8.4	1,074
Leitrim	199	126	123	249	8.6	199
Mayo	1,032	599	480	1,079	8.7	864
Roscommon	391	251	197	448	7.6	386
Sligo	619	266	212	478	7.8	401
<b>ULSTER (PART OF)</b>	1,932	1,062	960	2,022	7.6	1,645
Cavan	538	295	247	542	8.5	438
Donegal	1,041	578	509	1,087	7.4	889
Monaghan	353	189	204	393	7.0	318
<b>STATE</b>	27,479	14,111	13,368	27,479	6.5	21,620
<b>REGIONAL AUTHORITIES:</b>						
Border	3,624	1,819	1,648	3,467	7.4	2,810
Midland	1,455	827	749	1,576	6.3	1,280
West	3,041	1,688	1,342	3,030	7.3	2,455
Dublin	6,873	3,284	3,553	6,837	5.8	5,234
Mid-East	2,248	1,226	1,152	2,378	5.0	1,771
Mid-West	2,595	1,352	1,312	2,664	7.4	2,122
South-East	3,234	1,602	1,527	3,129	6.8	2,466
South-West	4,409	2,313	2,085	4,398	7.1	3,482

(a) Rate per 1,000 Population

(b) Figures for deaths occurring in Dublin are only available at Regional Authority level

**Table 8 Deaths registered classified by cause and age group**

Cause of Death	ICD-9 Code	Mortality Code	All Ages			Age Group									
			Persons	Males	Females	0-4	5-14	15-24	25-34	35-44	45-54	55-64	65-74	75-84	85 and over
<b>Total deaths</b>	001-999	00	27,479	14,111	13,368	271	65	351	418	595	1,415	2,744	4,897	8,983	7,740
<b>Infectious and parasitic diseases:-</b>	001-139, 279.8	01	160	82	78	4	-	4	5	10	13	23	27	42	32
Tuberculosis	010-018,137	02	40	19	21	-	-	-	1	1	4	6	7	15	6
Meningococcal infection	036	03	4	3	1	3	-	1	-	-	-	-	-	-	-
AIDS (HIV Disease)	042-044, 279.8	04	6	6	-	-	-	-	1	2	2	1	-	-	-
Viral Hepatitis	070	05	15	10	5	-	-	-	1	2	5	4	2	-	1
other infectious and parasitic diseases	Rem(001-139)		95	44	51	1	-	3	2	5	2	12	18	27	25
<b>Neoplasms</b>	140-239	06	7,969	4,209	3,760	3	20	25	58	183	618	1,303	2,077	2,545	1,137
<b>Malignant Neoplasms of the:-</b>	140-208	07	7,868	4,154	3,714	3	20	25	57	181	615	1,294	2,050	2,512	1,111
lip, oral cavity, pharynx	140-149	08	136	97	39	-	1	-	-	2	17	32	37	29	18
oesophagus	150	09	312	197	115	-	-	-	2	7	26	50	77	103	47
stomach	151	10	325	192	133	-	-	1	2	3	25	49	106	92	47
colon	153	11	584	320	264	-	-	1	1	6	28	77	163	206	102
rectum and anus	154	12	370	238	132	-	-	-	1	6	35	52	94	130	52
liver and the intrahepatic bile ducts	155	13	181	98	83	-	-	-	1	3	9	26	55	62	25
pancreas	157	14	407	194	213	-	-	-	-	9	28	79	117	117	57
larynx and trachea/bronchus/lung	161-162	15	1,683	1,033	650	-	-	-	1	19	116	326	535	547	139
skin	172	16	97	54	43	-	-	1	8	4	16	15	19	27	7
breast	174-175	17	674	7	667	-	-	-	4	45	88	145	147	143	102
cervix uteri	180	18	90	-	90	-	-	-	4	9	29	23	14	9	2
other parts of uterus	179,182	19	87	-	87	-	-	-	2	1	4	16	22	27	15
ovary	183.0	20	265	-	265	-	-	-	3	8	24	57	72	79	22
prostate	185	21	532	532	-	-	-	-	-	-	5	25	112	243	147
kidney	189.0	22	177	97	80	-	-	-	1	6	11	47	43	49	20
bladder	188	23	180	120	60	-	-	-	1	5	4	18	39	71	42
lymph/haematopoietic tissue	200-208	24	687	402	285	1	5	7	11	11	56	95	160	243	98
other malignant neoplasms	Rem(140-208)		1,081	573	508	2	14	15	15	37	94	162	238	335	169
Diseases of the blood and blood-forming organs, immunological disorders (excl 279.8)	279-289	25	86	44	42	-	-	1	1	3	10	5	13	26	27
Endocrine, Nutritional and metabolic diseases	240-278	26	713	355	358	4	-	10	2	6	14	55	133	287	202
Diabetes mellitus	250	27	516	274	242	-	-	1	-	3	9	40	96	221	146
Mental and behavioural disorders	290-319	28	588	265	323	-	-	21	37	38	41	30	40	166	215
Alcohol abuse (including alcoholic psychosis)	291,303	29	84	52	32	-	-	1	3	17	28	21	10	3	1
Drug dependence, toxicomania	304-305	30	90	70	20	-	-	20	33	21	10	5	1	-	-
Diseases of the nervous system and the sense organs	320-389	31	700	330	370	11	10	11	16	26	49	52	109	235	181
Meningitis	320-322	32	8	8	-	1	-	-	-	2	3	-	1	-	1
<b>Diseases of the Circulatory system:-</b>	390-459	33	9,662	4,929	4,733	4	2	19	41	95	357	741	1,570	3,388	3,445
Ischaemic heart disease	410-414	34	4,860	2,741	2,119	2	-	3	10	39	194	432	893	1,678	1,609
(Acute myocardial infarction)	(410)		2,819	1,574	1,245	1	-	1	5	21	97	245	517	997	935
other heart disease	420-423, 425-429	35	1,472	724	748	1	1	9	15	18	49	85	179	500	615
Cerebrovascular disease	430-438	36	1,903	767	1,136	-	-	5	11	19	71	94	263	710	730
other diseases of circulatory system	Rem(390-459)		1,427	697	730	1	1	2	5	19	43	130	235	500	491

<b>Diseases of the Respiratory system</b>	460-519	37	3,978	1,845	2,133	8	2	4	9	18	54	196	526	1,482	1,679	
Influenza	487	38	1	1	-	-	-	-	-	-	-	-	-	1	-	
Pneumonia	480-486	39	1,913	778	1,135	7	1	4	5	10	22	56	174	653	981	
Chronic Lower respiratory disease	490-494,496	40	1,285	684	601	-	-	-	2	2	19	85	246	544	387	
Asthma	493	41	52	20	32	-	-	-	2	1	5	2	11	18	13	
other diseases of the respiratory system	Rem(460-519)		779	382	397	1	1	-	2	6	13	55	106	284	311	
<b>Diseases of the Digestive system</b>	520-579	42	1,012	516	496	1	1	2	13	52	73	149	144	328	249	
Ulcer of stomach, duodenum and jejunum	531-534	43	119	60	59	-	-	-	-	4	8	10	17	47	33	
Chronic liver disease	571	44	230	140	90	-	-	-	8	34	47	79	36	22	4	
other diseases of the digestive system	Rem(520-579)		663	316	347	1	1	2	5	14	18	60	91	259	212	
Diseases of the skin and subcutaneous tissue	680-709	45	68	31	37	-	-	1	-	-	1	4	11	27	24	
Diseases of the musculoskeletal system/connective tissue	710-739	46	188	56	132	-	-	1	-	1	4	21	28	60	73	
Rheumatoid arthritis and osteoarthritis	714-715	47	98	32	66	-	-	-	-	1	2	13	14	31	37	
Diseases of the genitourinary system	580-629	48	696	334	362	1	-	3	1	2	9	17	86	261	316	
Diseases of the kidney and ureter	580-594	49	491	250	241	1	-	3	1	1	5	16	67	197	200	
Complications of pregnancy, childbirth and puerperium	630-676	50	-	-	-	-	-	-	-	-	-	-	-	-	-	
Certain conditions originating in the perinatal period*	760-779	51	110	65	45	109	1	-	-	-	-	-	-	-	-	
Congenital malformations and chromosomal abnormalities	740-759	52	162	88	74	95	6	8	12	5	8	9	7	5	7	
Congenital malformations of the:- nervous system	740-742	53	26	17	9	19	3	-	3	-	1	-	-	-	-	
circulatory system	745-747	54	51	28	23	25	2	2	6	5	4	2	3	1	1	
<b>Symptoms, signs, abnormal findings, ill-defined causes</b>	780-799	55	95	53	42	26	-	2	7	10	3	4	5	8	30	
Sudden infant death syndrome	798.0	56	25	16	9	25	-	-	-	-	-	-	-	-	-	
Unknown and unspecified causes	798.1-799.9	57	37	24	13	1	-	2	6	10	2	3	3	1	9	
Injury and poisoning	800-999		1,292	909	383	5	23	239	216	146	161	135	121	123	123	
<b>EXTERNAL CAUSES</b>																
External causes of injury and poisoning	E800-E999	58	1,439	1,011	428	5	23	258	250	170	185	147	129	142	130	
Accidents	E800-E929	59	918	617	301	4	19	144	130	93	93	82	102	125	126	
Transport accidents	E800-E848	60	292	222	70	1	9	97	68	28	19	22	26	19	3	
Road transport accidents	E810-E829, E929.0		290	219	71	1	9	97	68	28	17	22	26	19	3	
Motor vehicle transport accidents	E810-E819		281	211	70	1	7	96	66	28	16	20	25	19	3	
Accidental falls	E880-E888	61	308	155	153	-	-	9	5	21	19	28	44	73	109	
Accidental poisoning	E850-E869	62	130	96	34	-	3	22	31	25	26	8	8	4	3	
other accidents	Rem(E800-E929)		186	143	43	3	7	16	26	19	28	23	24	29	11	
Suicide and intentional self harm	E950-E959	63	409	318	91	-	2	93	94	64	73	54	21	6	2	
Homicide, assault	E960-E969	64	37	27	10	-	2	7	12	6	9	-	1	-	-	
Events of undetermined intent	E980-E989	65	66	47	19	1	-	14	13	7	10	11	4	6	-	
All other external causes	Rem(E930-E999)		9	2	7	-	-	-	1	-	-	-	1	5	2	

\* Stillbirths not included

**Table 9 Deaths registered, classified by principal cause<sup>1</sup>**

Area of residence	Population according to the Census of Population 2006	Total deaths	cause of death :							
			Malignant Neoplasms of:							Diabetes
			151	150, 152-159	162	174-175	179-189	200-208	Rem. 140-208	
LEINSTER	2,295,123	13,277	180	985	882	334	644	339	583	200
Carlow	50,349	310	1	30	33	6	9	2	15	4
Dublin City	506,211	4,175	65	282	325	102	202	103	176	49
South Dublin	246,935	817	9	53	62	23	36	26	42	8
Fingal	239,992	725	12	69	51	22	42	18	38	5
Dun Laoghaire Rathdown	194,038	1,120	19	105	79	30	50	31	47	15
Kildare	186,335	819	7	51	62	25	35	23	44	20
Kilkenny	87,558	543	6	48	28	12	22	11	23	11
Laois	67,059	403	4	32	27	9	29	14	12	6
Longford	34,391	245	4	17	10	5	12	5	12	5
Louth	111,267	718	10	49	45	22	36	26	33	11
Meath	162,831	763	8	50	34	15	44	13	30	11
Offaly	70,868	420	7	29	15	6	28	16	16	9
Westmeath	79,346	508	5	37	18	11	24	16	20	5
Wexford	131,749	915	10	73	47	24	41	16	46	23
Wicklow	126,194	796	13	60	46	22	34	19	29	18
MUNSTER	1,173,340	8,423	77	645	434	215	424	192	340	211
Clare	110,950	813	4	58	42	22	37	18	35	16
Cork City	119,418	1,054	11	85	72	23	67	31	36	18
Cork County	361,877	2,213	26	179	101	55	106	54	78	46
Kerry	139,835	1,131	6	74	47	28	45	22	50	29
Limerick City	52,539	415	3	32	21	16	27	5	15	3
Limerick County	131,516	873	11	59	50	25	40	15	45	25
North Tipperary	66,023	563	7	34	22	14	21	11	27	16
South Tipperary	83,221	605	6	53	37	14	32	18	21	38
Waterford City	45,748	262	2	25	16	6	17	7	9	5
Waterford County	62,213	494	1	46	26	12	32	11	24	15
CONNACHT	504,121	3,757	38	258	177	85	228	106	155	67
Galway City	72,414	164	2	15	11	1	9	5	11	3
Galway County	159,256	1,339	13	91	67	36	87	40	57	21
Leitrim	28,950	249	-	14	17	5	10	4	11	7
Mayo	123,839	1,079	14	66	45	33	55	36	36	16
Roscommon	58,768	448	3	26	16	2	26	9	16	11
Sligo	60,894	478	6	46	21	8	41	12	24	9
ULSTER (PART OF)	267,264	2,022	30	156	115	40	86	50	70	38
Cavan	64,003	542	6	41	27	8	14	8	17	12
Donegal	147,264	1,087	20	83	66	22	58	32	38	18
Monaghan	55,997	393	4	32	22	10	14	10	15	8
STATE	4,239,848	27,479	325	2,044	1,608	674	1,382	687	1,148	516
REGIONAL AUTHORITIES:										
Border	468,375	3,467	46	265	198	75	173	92	138	65
Midland	251,664	1,576	20	115	70	31	93	51	60	25
West	414,277	3,030	32	198	139	72	177	90	120	51
Dublin	1,187,176	6,837	105	509	517	177	330	178	303	77
Mid-East	475,360	2,378	28	161	142	62	113	55	103	49
Mid-West	361,028	2,664	25	183	135	77	125	49	122	60
South-East	460,838	3,129	26	275	187	74	153	65	138	96
South-West	521,130	4,398	43	338	220	106	218	107	164	93

<sup>1</sup> See appendix for detailed description

## and area of residence of deceased

cause of death :												
Diseases of Circulatory System:				Diseases of Respiratory System:			Diseases of the digestive system	740-759	760-779	Injury and Poisoning:		Remainder
401-405	410-414	430-438	Rem. 390-459	480-486	466, 490-493, 496	Rem. 460-519				E810-E829	other	
178	2,260	893	1,111	1,005	634	425	519	63	54	133	453	1,402
4	55	15	20	18	18	25	12	1	-	4	14	24
60	681	277	332	344	205	140	187	14	9	21	142	459
9	119	50	70	49	28	30	28	7	5	9	44	110
12	120	40	64	43	27	17	31	7	6	10	16	75
9	194	91	94	97	41	45	45	3	4	2	27	92
13	146	52	72	40	35	21	33	4	5	17	27	87
7	95	32	60	44	33	13	15	1	4	5	14	59
4	79	30	22	26	25	12	14	3	1	7	13	34
3	42	14	18	25	8	4	8	1	-	7	8	37
8	131	43	50	64	31	28	30	-	3	10	24	64
15	133	48	74	64	33	29	26	8	4	14	29	81
5	72	34	25	30	35	11	15	2	2	5	18	40
8	84	41	59	49	19	13	14	5	1	6	20	53
10	176	63	69	60	60	15	32	5	5	9	38	93
11	133	63	82	52	36	22	29	2	5	7	19	94
116	1,600	596	781	551	375	219	285	66	36	94	333	833
9	161	61	66	67	27	21	29	4	6	9	34	87
9	192	68	78	80	47	34	39	9	4	2	52	97
29	457	140	195	145	91	47	68	18	9	43	116	210
24	195	117	123	86	60	21	42	6	3	10	41	102
4	66	21	44	44	27	11	13	-	2	3	15	43
15	162	57	96	51	41	26	26	10	4	11	21	83
9	114	39	64	20	28	19	27	5	-	5	20	61
12	105	36	47	18	26	12	17	8	4	8	14	79
-	57	11	31	11	7	10	9	1	1	2	5	30
5	91	46	37	29	21	18	15	5	3	1	15	41
40	632	259	436	210	156	112	149	16	5	37	147	444
1	22	16	17	9	5	2	8	3	-	1	5	18
13	224	83	155	73	50	44	53	6	2	13	53	158
3	39	24	29	21	16	6	5	-	-	4	7	27
10	194	72	119	50	54	31	47	7	1	12	51	130
6	91	26	54	40	17	16	17	-	1	5	17	49
7	62	38	62	17	14	13	19	-	1	2	14	62
31	368	155	206	147	94	50	59	17	15	21	74	200
5	97	44	68	30	28	14	14	7	2	8	23	69
16	202	85	98	82	47	27	34	7	10	10	38	94
10	69	26	40	35	19	9	11	3	3	3	13	37
365	4,860	1,903	2,534	1,913	1,259	806	1,012	162	110	285	1,007	2,879
49	600	260	347	249	155	97	113	17	19	37	119	353
20	277	119	124	130	87	40	51	11	4	25	59	164
30	531	197	345	172	126	93	125	16	4	31	126	355
90	1,114	458	560	533	301	232	291	31	24	42	229	736
39	412	163	228	156	104	72	88	14	14	38	75	262
37	503	178	270	182	123	77	95	19	12	28	90	274
38	579	203	264	180	165	93	100	21	17	29	100	326
62	844	325	396	311	198	102	149	33	16	55	209	409

**Table 10 Deaths registered of infants under 1 year, classified by cause, sex and age group**

Cause of Death	Total under 1 day		1 day and under 7 days		1 week and under 4 weeks		4 weeks and under 1 year		Total	
	M	F	M	F	M	F	M	F	M	F
ALL CAUSES	48	38	23	20	20	19	45	24	136	101
Enteritis and other diarrhoeal diseases	-	-	-	-	-	-	-	-	-	-
Tuberculosis, all forms	-	-	-	-	-	-	-	-	-	-
Whooping cough	-	-	-	-	-	-	-	-	-	-
Other infective and parasitic diseases	1	-	-	-	-	1	1	-	2	1
Meningitis	-	-	-	-	-	-	-	-	-	-
Other inflammatory diseases of the central nervous system	-	-	-	-	-	-	-	-	-	-
Pneumonia	-	-	-	-	-	-	2	2	2	2
Influenza	-	-	-	-	-	-	-	-	-	-
Other diseases of respiratory system	-	-	-	-	-	-	-	-	-	-
Diseases of digestive system	1	-	-	-	-	-	-	-	1	-
Congenital anomalies:										
Anencephalus and similar anomalies	5	3	1	-	-	-	1	-	7	3
Spina Bifida	-	1	-	-	1	-	-	-	1	1
Other congenital anomalies of digestive system	2	-	-	2	1	-	1	-	4	2
Congenital anomalies of eye, ear, face and neck	-	-	-	-	-	-	-	-	-	-
Congenital anomalies of the heart	1	1	4	2	3	2	1	4	9	9
Other congenital anomalies of circulatory system	-	1	-	1	1	1	-	1	1	4
Congenital anomalies of respiratory system	1	-	-	-	-	-	-	-	1	-
Other congenital anomalies of upper alimentary tract inc. cleft palate and lip	-	-	-	-	-	-	-	-	-	-
Other congenital anomalies of digestive system	-	-	1	-	-	-	-	1	1	1
Congenital anomalies of genital organs	-	-	-	-	-	-	-	-	-	-
Congenital anomalies of urinary system	1	1	-	-	-	-	-	-	1	1
Congenital musculoskeletal deformities including limbs	-	5	1	1	-	-	2	-	3	6
Congenital anomalies of the integument	-	-	-	-	-	-	-	-	-	-
Chromosomal anomalies	2	4	3	1	1	3	3	2	9	10
Other and unspecified congenital anomalies	5	2	-	-	-	2	1	3	6	7
Fetus or newborn affected by maternal conditions, maybe unrelated to the pregnancy	1	-	-	-	-	-	-	-	1	-
Fetus or newborn affected by maternal complications of pregnancy	3	4	-	1	-	-	-	-	3	5
Fetus or newborn affected by complications of placenta, cord and membranes	4	4	2	1	1	-	-	-	7	5
Birth injury and difficult labour	1	1	-	-	-	-	-	-	1	1
Slow fetal growth and malnutrition	-	-	-	1	-	-	-	-	-	1
Disorders relating to short gestation and unspecified low birthweight	12	7	4	4	1	1	5	1	22	13
Disorders relating to long gestation and high birthweight	-	-	-	-	-	-	-	-	-	-
Intrauterine hypoxia and birth asphyxia	1	-	1	-	-	-	1	1	3	1
Respiratory distress syndrome	3	1	2	-	1	-	-	-	6	1
Other respiratory conditions of fetus and newborn	-	-	2	1	1	-	-	-	3	1
Infections specific to the perinatal period	-	1	-	1	1	2	2	-	3	4
Fetal and neo-natal haemorrhage	-	-	-	2	-	2	-	-	-	4
Haemolytic disease of newborn	1	-	-	1	-	-	-	-	1	1
Endocrine and metabolic disturbances specific to the fetus and newborn	-	-	1	-	-	-	1	-	2	-
Haematological disorders of fetus and newborn	-	-	-	-	1	-	-	-	1	-
Perinatal disorders of digestive system	1	-	1	-	3	1	4	1	9	2
Conditions involving the integument and temperature regulation of fetus and newborn	1	1	-	1	-	2	-	-	1	4
Other and ill-defined conditions originating in the perinatal period	-	1	-	-	-	-	1	-	1	1
Sudden death, cause unknown	1	-	-	-	3	2	12	6	16	8
Fractures	-	-	-	-	-	-	-	-	-	-
Intracranial and internal injuries, including nerves	-	-	-	-	-	-	-	-	-	-
Burns	-	-	-	-	-	-	-	-	-	-
Poisonings and toxic effects	-	-	-	-	-	-	-	-	-	-
Other injuries and poisonings	-	-	-	-	-	-	-	-	-	-
All other causes	-	-	-	-	1	-	7	2	8	2

**Table 11 Infant and neonatal mortality by area of residence of deceased**

Area of residence	Infant mortality		Neo natal mortality	
	Number	Rate	Number	Rate
<b>Leinster</b>	111	4.8	77	2.1
Carlow	0	0.0	0	0.0
Dublin City	21	3.3	11	1.7
South Dublin	15	3.5	6	1.4
Fingal	14	3.0	13	2.8
Dun Laoghaire Rathdown	6	2.7	5	2.2
Kildare	7	2.1	5	1.5
Kilkenny	5	4.2	4	3.3
Laois	5	4.7	4	3.8
Longford	0	0.0	0	0.0
Louth	6	3.5	3	1.8
Meath	10	3.4	6	2.1
Offaly	3	2.7	3	2.7
Westmeath	4	2.9	4	2.9
Wexford	9	4.2	8	3.8
Wicklow	6	2.8	5	2.4
<b>Munster</b>	86	4.9	61	3.5
Clare	12	6.9	8	4.6
Cork City	7	4.3	3	1.8
Cork County	24	4.2	15	2.6
Kerry	6	3.4	6	3.4
Limerick City	4	5.2	3	3.9
Limerick County	11	5.6	8	4.1
North Tipperary	3	2.8	3	2.8
South Tipperary	10	9.4	9	8.5
Waterford City	2	3.2	2	3.2
Waterford County	7	6.2	4	3.5
<b>Connacht</b>	15	2.1	11	1.6
Galway City	3	3.4	3	3.4
Galway County	5	2.0	4	1.6
Leitrim	0	0.0	0	0.0
Mayo	4	2.5	3	1.8
Roscommon	2	2.6	1	1.3
Sligo	1	1.2	0	0.0
<b>Ulster</b>	25	6.7	19	5.1
Cavan	7	7.1	4	4.0
Donegal	14	6.8	12	5.8
Monaghan	4	5.9	3	4.4
<b>State</b>	237	3.7	168	2.6
<b>REGIONAL AUTHORITIES:</b>				
Border	32	4.8	22	3.3
Midland	12	2.9	11	2.7
West	14	2.4	11	1.9
Dublin	56	3.2	35	2.0
Mid-East	23	2.7	16	1.9
Mid-West	30	5.4	22	4.0
South-East	33	4.7	27	3.9
South-West	37	4.1	24	2.6

Infant mortality rates: Deaths of infants under one year per 1,000 live births, classified by area of residence of mother

Neonatal mortality rates: Deaths of infants under 28 days per 1,000 live births, classified by area of residence of mother

Infant and neonatal mortality rates in some areas, based on small numbers are subject to considerable fluctuation and caution should be exercised in their interpretation

**Table 12 Divorce, Judicial Separation and Nullity applications received and granted by the courts in year ending December 2006**

Circuit Court	County	Divorce Applications		Judicial Separation Applications		Nullity Applications	
		Received	Granted	Received	Granted	Received	Granted
<b>Leinster</b>							
Carlow	Carlow	49	68	25	12	-	-
Dublin	Dublin	1,310	1,194	540	341	28	6
Naas	Kildare	129	106	74	29	-	1
Kilkenny	Kilkenny	76	101	23	25	-	-
Portlaoise	Laois	41	37	9	6	1	1
Longford	Longford	22	21	13	5	-	1
Dundalk	Louth	108	116	50	32	3	-
Trim	Meath	125	104	75	29	1	-
Tullamore	Offaly	50	53	20	14	-	-
Mullingar	Westmeath	81	83	36	15	-	-
Wexford	Wexford	157	131	48	24	2	-
Wicklow	Wicklow	113	85	56	12	2	-
<b>Munster</b>							
Ennis	Clare	101	82	38	22	2	-
Cork	Cork	467	382	256	125	9	5
Tralee	Kerry	115	115	44	25	2	2
Limerick	Limerick	190	87	74	101	1	-
Clonmel	Tipperary	158	97	57	32	1	1
Waterford	Waterford	109	72	39	28	-	1
<b>Connacht</b>							
Galway	Galway	213	184	117	87	1	4
Carrick on Shannon	Leitrim	14	14	11	1	1	1
Castlebar	Mayo	89	72	39	20	1	-
Roscommon	Roscommon	37	24	16	13	-	-
Sligo	Sligo	49	52	25	11	2	-
<b>Ulster</b>							
Cavan	Cavan	43	43	13	22	-	-
Letterkenny	Donegal	87	73	61	21	1	-
Monaghan	Monaghan	53	24	30	20	2	2
<b>Total Circuit Court</b>		<b>3986</b>	<b>3420</b>	<b>1789</b>	<b>1072</b>	<b>60</b>	<b>25</b>
High Court		39	46	50	27	1	-
Supreme Court*							
<b>TOTAL</b>		<b>4025</b>	<b>3466</b>	<b>1839</b>	<b>1099</b>	<b>61</b>	<b>25</b>

\*Supreme Court figures not finalised

Source: Courts Service



## **Appendix**

## Glossary of terms

### NUTS III Regional Authority areas

Border, Midland, West, Dublin, Mid-East, Mid-West, South-East, South-West

Border: Cavan, Donegal, Leitrim, Louth, Monaghan, Sligo.

Midland: Laois, Longford, Offaly, Westmeath.

West: Galway City, Galway County, Mayo, Roscommon.

Dublin: Dublin City, South Dublin, Fingal, Dun Laoghaire-Rathdown.

Mid-East: Kildare, Meath, Wicklow.

Mid-West: Clare, Limerick City, Limerick County, North Tipperary.

South-East: Carlow, Kilkenny, South Tipperary, Waterford City, Waterford County, Wexford.

South-West: Cork City, Cork County, Kerry.

### Causes of Death

#### ICD 9 Codes

#### Description

140-208

Malignant Neoplasms of:

151

- Stomach

150, 152 - 159

- Digestive organs and peritoneum

162

- Trachea, bronchus and lung

174-175

- Breast

179 - 190

- Genitourinary organs

200 - 208

- Lymphatic and haematopoietic tissue

250

Diabetes

390 - 459

Diseases of Circulatory system

401 - 405

- Hypertensive disease

410 - 414

- Ischaemic heart disease

430 - 438

- Cerebrovascular disease

460 - 486

Diseases of Respiratory system

480 - 486

- Pneumonia

466, 490 - 493, 496

- Bronchitis, emphysema and asthma, incl. Obstructive airways disease

520 - 579

Diseases of digestion system

740 - 759

Congenital anomalies

760 - 779

Certain causes of perinatal mortality

800 - 999

Injury and poisoning

E810 - E825

Motor vehicle accidents incl. non-traffic accidents

## Causes of death Eurostat shortlist (August 1998)

Nr	Disease or external cause	ICD-9 Code	ICD-10 Code
00	All causes of death	001-E999	A00-Y89
01	Infectious and Parasitic Diseases:-	001-139,279.8	A00-B99
02	Tuberculosis	010-018,137	A15-A19,B90
03	Meningococcal Infection	036	A39
04	AIDS (HIV Disease)	042-044,279.8	B20-B24
05	Viral Hepatitis	070	B15-B19
	other Infectious and Parasitic Diseases	Rem (001-139)	Rem (A00-B99)
06	Neoplasms	140-239	C00-D48
07	Malignant Neoplasms of the:-	140-208	C00-C97
08	Lip, Oral Cavity, Pharynx	140-149	C00-C14
09	Oesophagus	150	C15
10	Stomach	151	C16
11	Colon	153	C18
12	Rectum and Anus	154	C19-C20-C21
13	Liver and the Intrahepatic Bile Ducts	155	C22
14	Pancreas	157	C25
15	Larynx and Trachea/Bronchus/Lung	161-162	C32-C34
16	Skin	172	C43
17	Breast	174-175	C50
18	Cervix Uteri	180	C53
19	Other Parts of the Uterus	179,182	C54-C55
20	Ovary	183.0	C56
21	Prostate	185	C61
22	Kidney	189.0	C64
23	Bladder	188	C67
24	Lymph/Haematopoietic Tissue	200-208	C81-C96
	other Malignant Neoplasms	Rem (140-208)	Rem. (C00-C97)
25	Diseases of the Blood and Blood-forming Organs, Immunological disorders <sup>1</sup>	279-289	D50-D89
26	Endocrine, Nutritional and Metabolic Diseases	240-278	E00-E90
27	Diabetes Mellitus	250	E10-E14
28	Mental and Behavioural Disorders	290-319	F00-F99
29	Alcohol abuse (including Alcoholic Psychosis)	291,303	F10
30	Drug Dependence, Toxicomania	304-305	F11-F16,F18-F19
31	Diseases of the Nervous System and the Sense Organs	320-389	G00-H95
32	Meningitis	320-322	G00-G03
33	Diseases of the Circulatory System:-	390-459	I00-I99
34	Ischaemic Heart Disease	410-414	I20-I25
	<i>(Acute Myocardial Infarction)</i>	410	I21
35	Other Heart Disease	420-423,425-429	I30-I33,I39-I52
36	Cerebrovascular Disease	430-438	I60-I69
	other Diseases of the Circulatory System	Rem (390-459)	Rem. (I00-I99)
37	Diseases of the Respiratory System	460-519	J00-J99
38	Influenza	487	J10-J11
39	Pneumonia	480-486	J12-J18
40	Chronic Lower Respiratory Disease	490-494,496	J40-J47
41	Asthma	493	J45-J46
	other Diseases of the Respiratory System	Rem (460-519)	Rem. (J00-J99)
42	Diseases of the Digestive System	520-579	K00-K93
43	Ulcer of Stomach, Duodenum and Jejunum	531-534	K25-K28
44	Chronic Liver Disease	571.0-571.9	K70,K73-K74
	other Diseases of the Digestive System	Rem (520-579)	Rem. (K00-K93)
45	Diseases of the Skin and Subcutaneous Tissue	680-709	L00-L99
46	Diseases of the Musculoskeletal System/Connective Tissue	710-739	M00-M99
47	Rheumatoid Arthritis and Osteoarthritis	714-715	M05-M06,M15-M19
48	Diseases of the Genitourinary System	580-629	N00-N99
49	Diseases of the Kidney and Ureter	580-594	N00-N29
50	Complications of Pregnancy, Childbirth and Puerperium	630-676	O00-O99
51	Certain Conditions Originating in the Perinatal Period (stillbirths not included)	760-779	P00-P96
52	Congenital Malformations and Chromosomal Abnormalities	740-759	Q00-Q99
53	Congenital malformations of the Nervous System	740-742	Q00-Q07
54	Congenital malformations of the Circulatory System	745-747	Q20-Q28
55	Symptoms, Signs, Abnormal Findings, Ill-defined Causes	780-799	R00-R99
56	Sudden Infant Death Syndrome	798.0	R95
57	Unknown and Unspecified Causes	798.1-9,799	R96-R99
	Injury and Poisoning	800-999	S00-T98
58	External Causes of Injury and Poisoning (included in the Foregoing)	E800-E999	V01-Y89
59	Accidents	E800-E929	V01-X59
60	Transport Accidents	E800-E848	V01-V99
	Road transport Accidents	E810-E829, E929.0	V01-V80,V87,V89,Y85
	Motor vehicle transport Accidents	E810-E819	
61	Accidental Falls	E880-E888	W00-W19
62	Accidental Poisoning	E850-E869	X40-X49
	other accidents	Rem (E800-E929)	Rem (V01-X59)
63	Suicide and Intentional Self Harm	E950-E959	X60-X84
64	Homicide/Assault	E960-E969	X85-Y09
65	Cause Undetermined	E980-E989	Y10-Y34
	other External Causes	Rem (E930-E999)	

<sup>1</sup> 279.8 not included

**Table 1 Estimated Population classified by Sex and Age Group, 2001 - 2006**

Sex and Age Group	Persons in April of each year					
	2001	2002	2003 <sup>1</sup>	2004 <sup>1</sup>	2005 <sup>1</sup>	2006
	000					
<b>Persons</b>						
0 - 4 years	273.2	277.6	284.8	291.1	297.4	302.2
5 - 9 "	263.7	264.1	268.1	274.6	281.2	288.3
10 - 14 "	290.6	285.7	280.9	277.5	274.7	273.9
15 - 19 "	320.4	313.2	306.8	300.8	296.0	290.2
20 - 24 "	317.6	328.3	336.0	338.7	341.3	342.5
25 - 29 "	300.8	312.7	318.9	329.4	351.4	373.1
30 - 34 "	288.6	304.7	313.4	320.8	330.2	349.4
35 - 39 "	285.1	290.9	294.1	299.9	306.4	322.1
40 - 44 "	267.6	272.0	278.1	283.7	290.7	301.3
45 - 49 "	243.9	249.6	253.2	258.3	263.8	274.8
50 - 54 "	228.2	230.8	234.8	237.5	242.5	247.1
55 - 59 "	185.8	197.3	206.7	214.5	222.0	225.3
60 - 64 "	151.7	154.3	160.4	166.1	172.4	181.7
65 - 69 "	130.8	133.5	135.3	137.9	141.4	143.4
70 - 74 "	111.8	112.1	113.7	115.3	116.9	119.1
75 - 79 "	89.2	89.8	89.6	90.2	91.1	92.5
80 - 84 "	57.6	58.9	61.5	62.7	63.5	64.9
85 years and over	40.4	41.7	42.8	44.8	47.8	48.0
<b>Total</b>	<b>3,847.2</b>	<b>3,917.2</b>	<b>3,978.9</b>	<b>4,043.8</b>	<b>4,130.7</b>	<b>4,239.8</b>
<b>Males</b>						
0 - 4 years	140.4	142.0	145.6	148.8	152.4	154.5
5 - 9 "	135.5	135.9	137.7	141.2	144.6	148.0
10 - 14 "	149.0	146.1	144.2	142.4	141.1	140.5
15 - 19 "	164.3	160.4	157.0	154.1	151.4	148.2
20 - 24 "	160.5	165.3	168.5	170.3	171.4	172.8
25 - 29 "	151.2	156.1	159.6	165.0	177.9	189.3
30 - 34 "	144.2	152.4	157.2	160.3	166.2	177.5
35 - 39 "	141.2	144.5	146.3	150.5	154.6	163.8
40 - 44 "	133.0	135.3	138.2	140.8	144.6	151.4
45 - 49 "	122.4	125.0	126.5	128.8	131.5	138.0
50 - 54 "	115.5	116.6	118.2	119.6	122.3	124.6
55 - 59 "	94.0	99.8	104.9	108.7	111.9	113.9
60 - 64 "	75.9	77.6	80.6	83.6	86.6	91.6
65 - 69 "	64.0	65.3	66.1	67.4	69.2	70.9
70 - 74 "	51.1	51.7	53.1	54.4	55.5	56.5
75 - 79 "	37.1	37.4	37.4	38.0	38.8	40.1
80 - 84 "	21.7	22.3	23.3	23.7	23.9	24.7
85 years and over	12.2	12.5	13.0	13.7	14.9	14.8
<b>Total</b>	<b>1,913.1</b>	<b>1,946.2</b>	<b>1,977.2</b>	<b>2,011.2</b>	<b>2,059.0</b>	<b>2,121.1</b>
<b>Females</b>						
0 - 4 years	132.8	135.6	139.2	142.3	144.9	147.7
5 - 9 "	128.2	128.2	130.3	133.4	136.6	140.3
10 - 14 "	141.6	139.6	136.8	135.0	133.7	133.4
15 - 19 "	156.2	152.8	149.8	146.7	144.6	142.0
20 - 24 "	157.1	163.0	167.5	168.5	170.0	169.7
25 - 29 "	149.6	156.6	159.3	164.3	173.5	183.8
30 - 34 "	144.4	152.3	156.2	160.5	164.0	171.9
35 - 39 "	143.9	146.4	147.8	149.4	151.7	158.3
40 - 44 "	134.6	136.7	139.9	142.9	146.1	149.9
45 - 49 "	121.5	124.6	126.7	129.5	132.3	136.8
50 - 54 "	112.7	114.3	116.6	117.9	120.2	122.5
55 - 59 "	91.8	97.5	101.8	105.8	110.1	111.4
60 - 64 "	75.8	76.7	79.8	82.5	85.8	90.1
65 - 69 "	66.8	68.2	69.2	70.5	72.2	72.5
70 - 74 "	60.8	60.4	60.5	60.9	61.5	62.6
75 - 79 "	52.1	52.4	52.3	52.2	52.2	52.4
80 - 84 "	35.9	36.6	38.2	39.0	39.5	40.2
85 years and over	28.2	29.2	29.8	31.1	32.9	33.2
<b>Total</b>	<b>1,934.1</b>	<b>1,971.0</b>	<b>2,001.7</b>	<b>2,032.6</b>	<b>2,071.8</b>	<b>2,118.7</b>

<sup>1</sup> Preliminary

**Table 2 - Deaths which were registered on the authority of an tArd Chlaraitheoir (Registrar General) in 2006, classified by principal groups of causes, sex and year of occurrence**

Cause of Death	Year of Occurrence												Total
	2005	2004	2003	2002	2001	2000	1999	1998	1997	1996	1995	1994 and earlier	
Tuberculosis, all forms													
M	-	-	-	-	-	-	-	-	-	-	-	-	-
F	-	-	-	-	-	-	-	-	-	-	-	1	1
Other infective and parasitic diseases													
M	-	-	-	-	-	-	-	-	-	-	-	-	-
F	-	1	1	-	-	1	-	-	-	-	-	-	3
Malignant neoplasms													
M	3	16	2	-	1	1	1	-	2	1	-	9	36
F	5	7	9	5	3	2	3	-	2	4	3	9	52
Ischaemic and other forms of heart disease													
M	6	21	5	3	3	8	3	1	2	2	2	36	92
F	5	7	8	4	2	3	3	4	2	2	4	22	66
Hypertensive disease													
M	1	1	2	-	-	1	1	-	-	-	-	-	6
F	-	1	-	-	-	-	-	-	-	-	-	2	3
Cerebrovascular disease													
M	3	3	1	-	1	-	1	-	-	-	-	2	11
F	4	7	1	-	1	3	2	-	1	1	-	17	37
Other diseases of the circulatory system													
M	-	-	-	-	-	-	-	-	-	1	1	4	6
F	1	4	1	1	1	1	1	-	-	-	-	-	10
Diseases of the respiratory system													
M	7	5	3	3	2	2	2	1	-	1	2	7	35
F	12	16	1	1	3	2	-	2	-	1	2	6	46
Senility													
M	-	-	-	-	1	-	-	-	-	-	-	8	9
F	-	-	-	-	-	1	-	1	1	-	-	3	6
Other diseases													
M	2	27	8	2	3	-	-	-	-	-	-	18	60
F	10	15	5	3	2	-	3	-	4	-	-	12	54
Injury and poisoning													
M	1	102	12	5	2	-	-	1	-	-	-	3	126
F	-	43	-	1	1	1	1	-	-	-	-	2	49
All causes													
M	23	175	33	13	13	12	8	3	4	5	5	87	381
F	37	101	26	15	13	14	13	7	10	8	9	74	327