



**Central Statistics Office**  
An Phríomh-Oifig Staidrimh

# **Vital Statistics**

## **Third Quarter**

**2006**

Published by the Stationery Office, Dublin, Ireland.

To be purchased from the:

Central Statistics Office, Information Section, Skehard Road, Cork,

Government Publications Sales Office, Sun Alliance House,  
Molesworth Street, Dublin 2,

or through any bookseller.

Compiled by the Central Statistics Office on behalf of the Department of  
Health and Children.

[No. 570]

Price €6.00

April 2007.

© Government of Ireland 2007

Material compiled and presented by  
Central Statistics Office.

Reproduction is authorised, except for commercial  
purposes, provided the source is acknowledged.

ISBN 0-7557-7180-X  
ISSN 0790-7710

# Contents

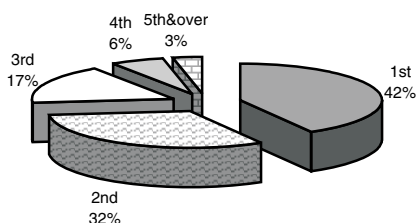
## Third Quarter 2006

	<b>Page</b>
<b>Commentary</b>	4
<b>Tables</b>	
Table 1	6
Table 2	7
Table 3	9
Table 4	10
Table 5	11
Table 6	12
Table 7	13
Table 8	14
Table 9	16
Table 10	18
Table 11	19
Table 12	20
Note: Page 8 is blank	
<b>Appendix</b>	
Glossary of terms	22
Causes of death Eurostat shortlist (August 1998)	23
Estimated population classified by sex and age group, 2001-2006	24

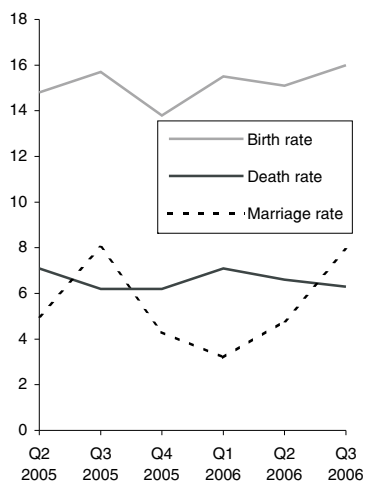
# Third Quarter 2006

## Commentary

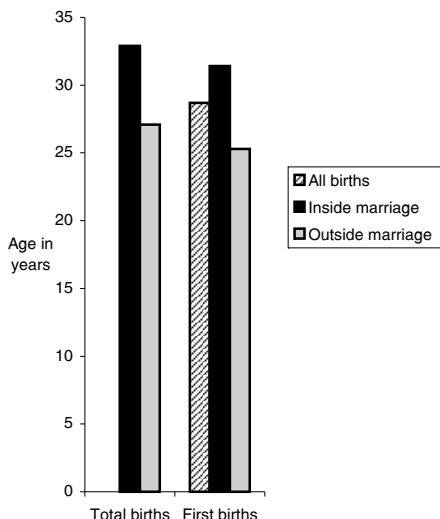
### Birth Order



### Annual birth, death and marriage rates per 1,000 population



### Average age at maternity



### Introduction

This report has been prepared by the Central Statistics Office for the Minister for Health and Children in accordance with the provisions of Section 2 of the Vital Statistics and Births, Deaths and Marriages Registration Act, 1952 and Section 73 of the Civil Registration Act 2004.

### Births

There were 16,920 births registered in quarter 3 of 2006, 8,696 males and 8,224 females, an increase of 750 on the quarter 3 figure of 2005. The quarter 3 2006 total is 19.1% higher than in 1997 when 14,211 babies were registered.

This represents an annual birth rate of 16 per 1,000 of the population, 0.3 above quarter 3 of 2005. This rate is 0.8 per 1,000 population higher than in 1997.

### Birth order

A total of 6,891 births (41.6%) were to first time mothers in quarter 3 of 2006. Second time mothers had 5,269 births (31.8%) (See Table 3). This compares to 5,442 (39.7%) first births registered in quarter 3 1997.

### Births outside marriage

There were 5,541 births registered as outside marriage in quarter 3 of 2006. This accounted for 32.7% of all births, an increase of 1.2% on quarter 3 2005. The highest percentage of births outside marriage occurred in Limerick City at 59.0%, while the lowest percentage was in Galway County at 20.9% (see Table 6). In quarter 3 1997, 3,723 births were registered outside marriage or 26.2% of all births.

### Deaths

There were 6,657 deaths registered in quarter 3 2006, 3,417 males and 3,240 females, an increase of 277 on the quarter 3 figure 2005. The quarter 3 2006 total is 6.1% lower than in 1997 when 7,090 deaths were registered.

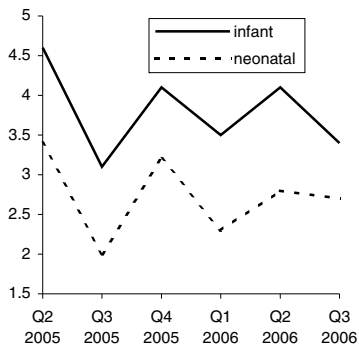
This represents an annual death rate of 6.3 per 1,000 population, 0.1 above quarter 3 2005. This rate is 1.4 per 1,000 population lower than in 1997.

### Age at death

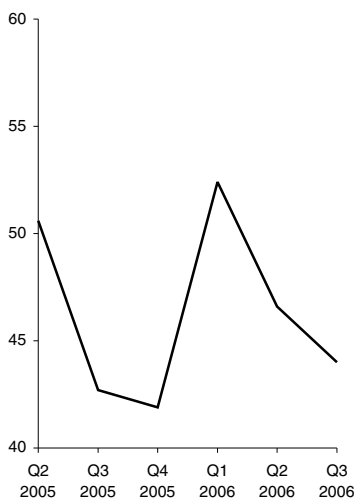
There were 58 infant deaths registered in quarter 3 2006, an increase of 8 on the quarter 3 figure 2005. Neonatal deaths are deaths of infants at ages under 4 weeks. There were 46 neonatal deaths registered in quarter 3 2006, an increase of 13 on the quarter 3 figure 2005.

In quarter 3 2006 the infant mortality rate of 3.4 per 1,000 live births was 0.3 above quarter 3 2005. This rate is 2.2 per 1,000 live births lower than in 1997. The neonatal mortality rate per 1,000 live births in quarter 3 2006 was 2.7, 0.7 higher than quarter 3 2005 and 0.9 below quarter 3 1997.

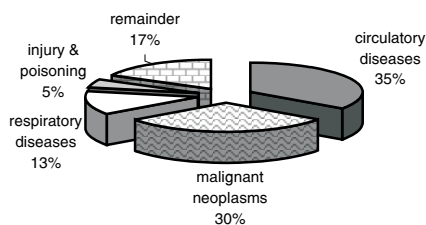
**Infant and neonatal mortality rates per 1,000 live births**



**Death rates for ages 65 & over per 1,000 relevant population**



**Principal causes of death**



There were 5,146 deaths of persons aged 65 and over registered in quarter 3 2006, an increase of 227 on the quarter 3 figure 2005. The quarter 3 2006 total is 6.5% lower than in 1997 when 5,505 deaths were registered.

This represents an annual death rate of 44 per 1,000 population aged 65 and over, 1.3 above quarter 3 2005. This rate is 8.9 per 1,000 population aged 65 and over lower than in 1997.

### Cause of death

- **Diseases of the Circulatory System:**

Diseases of the Circulatory System accounted for 2,318 deaths, or an annual rate of 2.2 per 1,000 population. Of these, 1,176 were due to Ischaemic Heart Disease and 454 to Cerebrovascular Disease.

- **Malignant Neoplasms:**

There were 2,004 deaths from malignant neoplasms. This is equivalent to an annual rate of 1.9 per 1,000 population. Of these, 258 were due to malignant neoplasms of the colon, rectum and anus and 407 to malignant neoplasms of the larynx and trachea, bronchus and lung.

- **Diseases of the Respiratory System:**

Deaths from pneumonia numbered 423; chronic bronchitis, emphysema and asthma (including chronic obstructive airways disease) accounted for 283 deaths; 164 deaths resulted from other respiratory diseases.

- **Injury and Poisoning:**

There were 59 deaths from injuries received in motor vehicle accidents (including non-traffic accidents) while all other injuries and poisonings accounted for 261 deaths.

### Methodology

Deaths are coded according to the 9<sup>th</sup> revision of the International Statistical Classification of Diseases, Injuries and Causes of death.

### Marriages

The number of marriages registered during the quarter was 8,341 equivalent to an annual marriage rate of 7.9 per 1,000 population, 0.1 below the corresponding quarter of 2005. The quarter 3 2006 total is 19% higher than in quarter 3 1997 when 7,011 marriages were registered.

### Population

The total from the Census of Population 2006 was 4,239,848.

### Methodology

All figures in this report are classified by quarter of registration. Delay in the registration of some births, deaths and marriages result in them being included in a later period in these quarterly reports.

**Table 1 Marriages, births, deaths and natural increase**

	Marriages <sup>1</sup>	Live Births				Deaths				Natural Increase
		Total	First	Outside marriage	Average Age	Total	Infant	Neonatal	65 & over	
<b>Quarter 1</b>										
1997	1,665	12,980	5,032	3,656	29.9	9,235	87	53	7,541	3,745
1998	1,642	13,405	5,209	3,875	30.0	8,927	82	52	7,244	4,478
1999	2,064	13,388	5,491	4,275	30.0	9,867	80	61	8,104	3,521
2000	2,200	13,984	5,693	4,656	30.0	9,804	86	59	8,062	4,180
2001	2,168	14,785	5,963	4,877	30.1	8,408	81	56	6,747	6,377
2002	2,484	14,972	6,127	4,877	30.3	7,749	73	51	6,281	7,223
2003	2,571	15,238	6,158	5,080	30.3	7,756	67	52	6,259	7,482
2004	2,676	15,599	6,082	5,181	30.7	7,873	72	56	6,347	7,726
2005	2,909	15,334	6,290	5,147	30.9	7,352	65	47	5,920	7,982
2006	3,267	15,958	6,449	5,481	30.9	7,320	56	36	6,040	8,638
<b>Quarter 2</b>										
1997	3,577	13,679	5,036	3,445	30.2	8,104	80	48	6,434	5,575
1998	3,689	13,729	5,181	3,674	30.1	8,021	88	56	6,421	5,708
1999	4,577	13,585	5,299	4,053	30.2	7,777	79	55	6,155	5,808
2000	4,670	13,794	5,427	4,260	30.3	7,650	77	52	5,974	6,144
2001	4,533	14,303	5,615	4,307	30.5	7,260	74	55	5,808	7,043
2002	4,810	15,247	5,858	4,672	30.5	7,680	91	64	6,074	7,567
2003	4,827	15,582	6,095	4,689	30.6	7,203	83	59	5,625	8,379
2004	4,719	15,535	5,897	4,874	30.8	6,881	74	53	5,351	8,654
2005	5,130	15,306	5,922	4,810	31.1	7,349	70	52	5,826	7,957
2006	5,094	15,979	6,315	5,056	31.1	6,967	65	44	5,488	9,012
<b>Quarter 3</b>										
1997	7,011	14,211	5,442	3,723	30.2	7,090	80	51	5,505	7,121
1998	7,530	14,027	5,552	3,901	30.1	7,187	72	57	5,625	6,840
1999	7,342	13,840	5,635	4,323	30.0	6,645	70	44	5,218	7,195
2000	7,593	13,967	5,641	4,451	30.2	6,832	89	54	5,372	7,135
2001	7,557	14,688	5,901	4,472	30.3	6,974	97	67	5,403	7,714
2002	7,580	15,593	6,333	4,855	30.4	6,941	68	50	5,391	8,652
2003	7,996	15,909	6,240	4,981	30.6	6,639	85	68	5,147	9,270
2004	8,168	15,605	6,171	5,100	30.8	6,473	72	43	5,123	9,132
2005	8,220	16,170	6,548	5,101	30.9	6,380	50	33	4,919	9,790
2006	8,341	16,920	6,891	5,541	31.0	6,657	58	46	5,146	10,263
<b>Quarter 4</b>										
1997	3,378	11,441	4,584	3,068	30.0	7,176	77	44	5,613	4,265
1998	3,922	12,390	5,053	3,683	30.1	7,217	88	67	5,566	5,173
1999	4,543	12,541	5,139	3,810	30.2	7,394	64	48	5,815	5,147
2000	4,705	12,494	5,236	3,868	30.2	6,829	70	53	5,324	5,665
2001	4,988	14,106	5,915	4,393	30.3	7,170	85	57	5,422	6,936
2002	5,682	14,709	5,989	4,411	30.5	6,978	74	49	5,378	7,731
2003	4,908	14,788	5,883	4,563	30.7	7,225	76	52	5,568	7,563
2004	5,056	14,945	5,975	4,783	30.9	6,924	82	62	5,253	8,021
2005	4,464	14,232	5,861	4,470	31.1	6,360	59	45	4,827	7,872
2006										
<b>Total</b>										
1997	15,631	52,311	20,094	13,892	30.1	31,605	324	196	25,093	20,706
1998	16,783	53,551	20,995	15,133	30.1	31,352	330	232	24,856	22,199
1999	18,526	53,354	21,564	16,461	30.1	31,683	293	208	25,292	21,671
2000	19,168	54,239	21,997	17,235	30.2	31,115	322	218	24,732	23,124
2001	19,246	57,882	23,394	18,049	30.3	29,812	337	235	23,380	28,070
2002	20,556	60,521	24,307	18,815	30.4	29,348	306	214	23,124	31,173
2003	20,302	61,517	24,376	19,313	30.6	28,823	311	231	22,599	32,694
2004	20,619	61,684	24,125	19,938	30.8	28,151	300	214	22,074	33,533
2005	20,723	61,042	24,621	19,528	31.0	27,441	244	177	21,492	33,601
2006										

<sup>1</sup> 1996 and 2002 marriage figures are final. All other marriage figures are subject to revision.

**Table 2 Annual marriage, birth, death and natural increase rates per 1,000 population**

	Marriages	Live Births			Deaths				Natural Increase
		Total	% First births <sup>1</sup>	% Outside marriage	Total	Infant Mortality <sup>2</sup>	Neonatal Mortality <sup>3</sup>	65 & over	
<b>Quarter 1</b>									
1997	1.8	14.3	38.8	28.2	10.2	6.7	4.1	72.9	4.1
1998	1.8	14.6	39.0	28.9	9.7	6.1	3.9	69.6	4.9
1999	2.2	14.5	41.1	31.9	10.7	6.0	4.6	77.1	3.8
2000	2.4	14.9	40.9	33.3	10.5	6.1	4.2	76.4	4.5
2001	2.3	15.6	40.5	33.0	8.9	5.5	3.8	63.5	6.7
2002	2.6	15.6	41.2	32.6	8.1	4.9	3.4	58.5	7.5
2003	2.6	15.6	40.7	33.3	7.9	4.4	3.4	57.4	7.6
2004	2.7	15.7	40.4	33.2	7.9	4.6	3.6	57.3	7.8
2005	2.9	15.2	41.3	33.6	7.3	4.2	3.1	52.5	7.9
2006	3.2	15.5	41.1	34.3	7.1	3.5	2.3	52.4	8.4
<b>Quarter 2</b>									
1997	3.9	14.9	36.9	25.2	8.8	5.8	3.5	61.9	6.1
1998	4.0	14.8	37.9	26.8	8.7	6.4	4.1	61.1	6.2
1999	4.9	14.5	39.2	29.8	8.3	5.8	4.0	58.4	6.2
2000	4.9	14.6	39.5	30.9	8.1	5.6	3.8	56.3	6.5
2001	4.7	14.9	39.5	30.1	7.5	5.2	3.8	54.1	7.3
2002	4.9	15.6	38.8	30.6	7.8	6.0	4.2	55.7	7.7
2003	4.9	15.7	39.5	30.1	7.2	5.3	3.8	50.8	8.4
2004	4.7	15.4	38.8	31.4	6.8	4.8	3.4	47.5	8.6
2005	5.0	14.8	38.8	31.4	7.1	4.6	3.4	50.6	7.7
2006	4.8	15.1	41.1	31.6	6.6	4.1	2.8	46.9	8.5
<b>Quarter 3</b>									
1997	7.7	15.5	38.4	26.2	7.7	5.6	3.6	52.9	7.8
1998	8.1	15.2	39.7	27.8	7.8	5.1	4.1	53.5	7.4
1999	7.8	14.8	40.9	31.2	7.1	5.1	3.2	49.5	7.7
2000	8.0	14.7	40.6	31.9	7.2	6.4	3.9	50.6	7.5
2001	7.9	15.3	40.4	30.4	7.3	6.6	4.6	50.3	8.0
2002	7.7	15.9	41.0	31.1	7.1	4.4	3.2	49.5	8.8
2003	8.0	16.0	39.6	31.3	6.7	5.3	4.3	46.5	9.3
2004	8.1	15.4	39.8	32.7	6.4	4.6	2.8	45.4	9.0
2005	8.0	15.7	40.7	31.5	6.2	3.1	2.0	42.7	9.5
2006	7.9	16.0	41.6	32.7	6.3	3.4	2.7	44.0	9.7
<b>Quarter 4</b>									
1997	3.7	12.5	40.2	26.8	7.8	6.7	3.8	54.0	4.7
1998	4.2	13.4	41.0	29.7	7.8	7.1	5.4	53.0	5.6
1999	4.9	13.4	41.1	30.4	7.9	5.1	3.8	55.1	5.5
2000	5.0	13.2	42.1	31.0	7.2	5.6	4.2	50.1	6.0
2001	5.2	14.7	42.2	31.1	7.5	6.0	4.0	50.5	7.2
2002	5.8	15.0	41.2	30.0	7.1	5.0	3.3	49.3	7.9
2003	4.9	14.9	40.9	30.9	7.3	5.1	3.5	50.3	7.6
2004	5.0	14.8	40.3	32.0	6.8	5.5	4.1	46.6	7.9
2005	4.3	13.8	41.4	31.4	6.2	4.1	3.2	41.9	7.6
2006									
<b>Total</b>									
1997	4.3	14.3	38.5	26.6	8.6	6.2	3.7	60.3	5.7
1998	4.5	14.5	39.4	28.3	8.5	6.2	4.3	59.2	6.0
1999	5.0	14.3	40.6	30.9	8.5	5.5	3.9	59.9	5.8
2000	5.1	14.3	40.8	31.8	8.2	5.9	4.0	58.2	6.1
2001	5.0	15.0	40.7	31.2	7.7	5.8	4.1	54.4	7.3
2002	5.2	15.5	40.5	31.1	7.5	5.1	3.5	53.0	8.0
2003	5.1	15.5	40.2	31.4	7.2	5.1	3.8	51.0	8.2
2004	5.1	15.3	39.8	32.3	7.0	4.9	3.5	49.0	8.3
2005	5.0	14.8	40.5	32.0	6.6	4.0	2.9	46.7	8.1
2006									

<sup>1</sup> First births divided by the total number of live births (excluding those with unstated parity), multiplied by 100<sup>2</sup> Infant mortality is the number of infant deaths per 1,000 live births<sup>3</sup> Neonatal mortality is the number of neonatal (infants aged under 4 weeks) deaths per 1,000 live births





**Table 3 Births registered, classified by age of mother at maternity, sex and previous number of liveborn children showing the number of births outside marriage**

Age of mother at maternity	Total births			Births outside marriage	Previous number of liveborn children						
	Males	Females	Total		0	1	2	3	4	5 or more	Not stated <sup>(a)</sup>
<b>All ages</b>	8,696	8,224	16,920	5,541	6,891	5,269	2,818	1,041	336	206	359
<b>15 and under</b>	2	4	6	6	6	-	-	-	-	-	-
16	18	23	41	41	41	-	-	-	-	-	-
17	50	56	106	102	98	8	-	-	-	-	-
18	96	85	181	175	165	14	-	-	-	-	2
19	139	125	264	238	230	32	-	-	-	-	2
<b>Under 20</b>	305	293	598	562	540	54	-	-	-	-	4
20	181	164	345	297	274	63	6	1	-	-	1
21	194	163	357	305	265	71	16	2	-	-	3
22	240	232	472	388	325	109	25	5	1	-	7
23	250	233	483	363	285	132	44	10	1	-	11
24	271	260	531	360	297	164	44	14	2	2	8
<b>20-24</b>	1,136	1,052	2,188	1,713	1,446	539	135	32	4	2	30
25	314	279	593	369	287	201	65	22	5	2	11
26	331	334	665	338	324	213	71	28	12	4	13
27	432	359	791	346	365	271	96	31	8	5	15
28	404	463	867	294	404	287	114	35	9	7	11
29	535	489	1,024	288	458	342	123	54	19	8	20
<b>25-29</b>	2,016	1,924	3,940	1,635	1,838	1,314	469	170	53	26	70
30	569	478	1,047	236	475	331	147	54	9	6	25
31	658	587	1,245	233	496	415	205	60	22	16	31
32	630	561	1,191	186	438	426	213	60	22	11	21
33	564	570	1,134	169	361	432	221	69	18	9	24
34	571	588	1,159	170	343	413	255	90	23	16	19
<b>30-34</b>	2,992	2,784	5,776	994	2,113	2,017	1,041	333	94	58	120
35	544	508	1,052	135	262	355	277	95	28	7	28
36	461	496	957	134	216	324	249	88	33	17	30
37	375	330	705	95	143	207	204	99	18	14	20
38	271	278	549	68	122	152	146	71	22	14	22
39	240	197	437	73	83	108	125	65	25	21	10
<b>35-39</b>	1,891	1,809	3,700	505	826	1,146	1,001	418	126	73	110
<b>40 and over</b>	356	357	713	128	126	197	171	88	59	47	25
Age not stated	-	5	5	4	2	2	1	-	-	-	-

<sup>(a)</sup> Figures in this column are artificially high because of a temporary issue with the data. More complete information on number of previous children will be available in the 2006 Annual Summary

**Table 4 Births registered, classified by area of residence and age of mother**

Area of residence	Under 20	20-24	25-29	30-34	35-39	40 and over	Age not stated	All ages	Average age of mother at maternity	
									Total	First
<b>LEINSTER</b>	355	1,310	2,209	3,208	2,070	408	2	9,562	30.9	28.6
Carlow	9	39	60	76	33	11	-	228	30.2	28.3
Dublin City	94	277	373	502	373	84	1	1,704	30.6	28.5
South Dublin	47	173	241	352	217	32	-	1,062	30.4	28.3
Fingal	34	158	303	424	269	48	-	1,236	31.0	29.1
Dun Laoghaire Rathdown	7	59	83	187	212	51	-	599	33.3	30.9
Kildare	27	108	197	331	188	31	-	882	31.1	28.6
Kilkenny	9	36	76	132	56	9	-	318	31.1	29.0
Laois	9	44	78	107	57	10	-	305	30.5	28.0
Longford	10	23	38	38	37	6	-	152	30.4	27.2
Louth	20	71	124	150	94	14	-	473	30.3	27.5
Meath	26	66	194	310	154	35	1	786	31.3	28.5
Offaly	10	47	72	106	58	13	-	306	30.8	28.6
Westmeath	16	45	89	121	71	22	-	364	30.9	28.4
Wexford	23	101	150	174	114	17	-	579	30.2	27.7
Wicklow	14	63	131	198	137	25	-	568	31.5	29.5
<b>MUNSTER</b>	149	542	1,059	1,602	985	184	3	4,524	31.1	28.8
Clare	14	46	115	159	100	30	-	464	31.4	29.3
Cork City	17	59	100	99	63	9	-	347	29.8	27.5
Cork County	30	129	318	610	348	49	1	1,485	31.8	29.7
Kerry	12	57	88	152	112	18	-	439	31.5	29.1
Limerick City	23	53	40	59	26	4	-	205	28.2	24.6
Limerick County	15	64	131	183	119	20	2	534	31.1	29.0
North Tipperary	6	22	61	100	62	18	-	269	32.0	30.1
South Tipperary	10	45	80	83	58	14	-	290	30.6	28.4
Waterford City	11	36	56	53	29	4	-	189	29.2	27.4
Waterford County	11	31	70	104	68	18	-	302	31.5	28.4
<b>CONNACHT</b>	51	214	413	637	445	83	-	1,843	31.5	29.1
Galway City	9	44	51	80	44	9	-	237	30.3	28.1
Galway County	12	61	138	231	169	24	-	635	31.9	29.8
Leitrim	5	14	27	33	27	6	-	112	31.2	28.1
Mayo	12	60	108	123	105	24	-	432	31.2	28.5
Roscommon	3	18	39	94	39	9	-	202	31.8	29.9
Sligo	10	17	50	76	61	11	-	225	31.9	29.1
<b>ULSTER (PART OF)</b>	43	122	259	329	200	38	-	991	30.7	27.8
Cavan	9	31	68	97	50	7	-	262	30.8	28.6
Donegal	30	72	141	167	114	24	-	548	30.6	27.0
Monaghan	4	19	50	65	36	7	-	181	31.2	28.9
<b>STATE</b>	598	2,188	3,940	5,776	3,700	713	5	16,920	31.0	28.7
<b>REGIONAL AUTHORITIES:</b>										
Border	78	224	460	588	382	69	-	1,801	30.8	27.9
Midland	45	159	277	372	223	51	-	1,127	30.7	28.2
West	36	183	336	528	357	66	-	1,506	31.5	29.1
Dublin	182	667	1,000	1,465	1,071	215	1	4,601	31.0	28.9
Mid-East	67	237	522	839	479	91	1	2,236	31.3	28.8
Mid-West	58	185	347	501	307	72	2	1,472	31.0	28.5
South-East	73	288	492	622	358	73	-	1,906	30.5	28.2
South-West	59	245	506	861	523	76	1	2,271	31.4	29.2

**Table 5 Births registered outside marriage, classified by area of residence and age of mother**

Area of residence	Under 25	25-29	30-34	35-39	40 and over	Age not stated	All ages	Average age of mother at maternity	
								Total	First
<b>LEINSTER</b>	1,361	1,008	600	320	77	2	3,368	27.2	25.4
Carlow	37	24	13	3	2	-	79	26.2	24.4
Dublin City	310	206	144	93	28	1	782	27.7	25.8
South Dublin	181	109	67	40	7	-	404	26.7	25.0
Fingal	152	119	78	34	7	-	390	27.3	26.1
Dun Laoghaire Rathdown	55	42	28	30	8	-	163	29.0	27.4
Kildare	103	91	51	14	3	-	262	26.6	24.7
Kilkenny	39	33	19	6	4	-	101	27.3	25.6
Laois	41	27	16	5	-	-	89	26.1	24.4
Longford	19	15	6	5	2	-	47	27.1	24.9
Louth	83	63	32	14	3	-	195	26.6	24.7
Meath	80	84	46	15	2	1	228	26.8	25.0
Offaly	49	28	17	11	2	-	107	27.1	25.0
Westmeath	51	37	18	11	5	-	122	27.1	25.0
Wexford	99	65	28	20	3	-	215	26.5	24.6
Wicklow	62	65	37	19	1	-	184	27.7	26.2
<b>MUNSTER</b>	581	419	270	119	36	2	1,427	27.1	25.3
Clare	55	35	21	9	2	-	122	26.5	24.7
Cork City	64	59	26	15	2	-	166	27.0	25.1
Cork County	129	107	82	40	13	1	372	28.1	26.5
Kerry	52	35	29	18	2	-	136	27.8	25.6
Limerick City	63	26	29	2	1	-	121	25.7	22.9
Limerick County	66	45	25	6	4	1	147	26.3	24.8
North Tipperary	28	22	15	9	5	-	79	28.3	26.1
South Tipperary	49	30	13	8	3	-	103	26.5	24.6
Waterford City	39	29	13	3	2	-	86	25.8	24.9
Waterford County	36	31	17	9	2	-	95	27.3	25.7
<b>CONNACHT</b>	195	131	79	42	11	-	458	27.0	25.2
Galway City	35	20	12	8	-	-	75	26.5	24.5
Galway County	50	40	26	13	4	-	133	27.6	25.9
Leitrim	14	12	2	2	1	-	31	26.0	24.3
Mayo	60	29	11	9	5	-	114	26.3	24.3
Roscommon	16	8	16	3	1	-	44	28.0	27.2
Sligo	20	22	12	7	-	-	61	27.5	25.7
<b>ULSTER (PART OF)</b>	138	77	45	24	4	-	288	26.4	23.9
Cavan	32	21	9	7	-	-	69	26.4	25.0
Donegal	85	42	28	14	2	-	171	26.1	23.4
Monaghan	21	14	8	3	2	-	48	27.3	24.1
<b>STATE</b>	2,275	1,635	994	505	128	4	5,541	27.1	25.3
<b>REGIONAL AUTHORITIES:</b>									
Border	255	174	91	47	8	-	575	26.6	24.4
Midland	160	107	57	32	9	-	365	26.9	24.8
West	161	97	65	33	10	-	366	27.0	25.3
Dublin	698	476	317	197	50	1	1,739	27.5	25.8
Mid-East	245	240	134	48	6	1	674	27.0	25.2
Mid-West	212	128	90	26	12	1	469	26.5	24.4
South-East	299	212	103	49	16	-	679	26.6	24.9
South-West	245	201	137	73	17	1	674	27.8	26.0

**Table 6 Births registered, classified by area of occurrence and by area of residence of mother, showing the percentage of births outside marriage**

	Area of occurrence	Area of residence of mother				Percentage of births outside marriage
		Males	Females	Total	Rate <sup>(a)</sup>	
<b>LEINSTER</b>	9,336	4,874	4,688	9,562	16.7	35.2
Carlow	-	123	105	228	18.1	34.6
Dublin City	5,927	851	853	1,704	13.5	45.9
South Dublin	-	555	507	1,062	17.2	38.0
Fingal	-	639	597	1,236	20.6	31.6
Dun Laoghaire Rathdown	344	308	291	599	12.3	27.2
Kildare	2	448	434	882	18.9	29.7
Kilkenny	404	164	154	318	14.5	31.8
Laois	482	152	153	305	18.2	29.2
Longford	1	70	82	152	17.7	30.9
Louth	1,018	234	239	473	17.0	41.2
Meath	-	400	386	786	19.3	29.0
Offaly	1	158	148	306	17.3	35.0
Westmeath	613	194	170	364	18.4	33.5
Wexford	540	285	294	579	17.6	37.1
Wicklow	4	293	275	568	18.0	32.4
<b>MUNSTER</b>	4,567	2,349	2,175	4,524	15.4	31.5
Clare	2	246	218	464	16.7	26.3
Cork City	1,961	181	166	347	11.6	47.8
Cork County	8	778	707	1,485	16.4	25.1
Kerry	386	222	217	439	12.6	31.0
Limerick City	1,253	99	106	205	15.6	59.0
Limerick County	-	281	253	534	16.2	27.5
North Tipperary	1	138	131	269	16.3	29.4
South Tipperary	274	146	144	290	13.9	35.5
Waterford City	682	101	88	189	16.5	45.5
Waterford County	-	157	145	302	19.4	31.5
<b>CONNACHT</b>	2,131	964	879	1,843	14.6	24.9
Galway City	798	125	112	237	13.1	31.6
Galway County	512	333	302	635	15.9	20.9
Leitrim	-	53	59	112	15.5	27.7
Mayo	432	225	207	432	14.0	26.4
Roscommon	-	103	99	202	13.7	21.8
Sligo	389	125	100	225	14.8	27.1
<b>ULSTER (PART OF)</b>	886	509	482	991	14.8	29.1
Cavan	394	139	123	262	16.4	26.3
Donegal	491	280	268	548	14.9	31.2
Monaghan	1	90	91	181	12.9	26.5
<b>STATE</b>	16,920	8,696	8,224	16,920	16.0	32.7
<b>REGIONAL AUTHORITIES:</b>						
Border	2,293	921	880	1,801	15.4	31.9
Midland	1,097	574	553	1,127	17.9	32.4
West	1,742	786	720	1,506	14.5	24.3
Dublin	6,271	2,353	2,248	4,601	15.5	37.8
Mid-East	6	1,141	1,095	2,236	18.8	30.1
Mid-West	1,256	764	708	1,472	16.3	31.9
South-East	1,900	976	930	1,906	16.5	35.6
South-West	2,355	1,181	1,090	2,271	14.6	29.7

(a) Annual rates based on 2006 Population

**Table 7 Deaths registered, classified by area of occurrence and area of residence of deceased, showing the number aged 65 and over**

	Area of occurrence	Area of residence of deceased				Persons 65 years and over
		Males	Females	Total	Rate <sup>(a)</sup>	
<b>LEINSTER</b>	3,140	1,578	1,566	3,144	5.5	2,354
Carlow	77	34	35	69	5.5	54
Dublin City	<sup>(b)</sup>	479	506	985	7.8	738
South Dublin	<sup>(b)</sup>	106	93	199	3.2	128
Fingal	<sup>(b)</sup>	86	81	167	2.8	114
Dun Laoghaire Rathdown	<sup>(b)</sup>	120	153	273	5.6	220
Kildare	193	92	90	182	3.9	121
Kilkenny	124	79	56	135	6.2	106
Laois	73	53	31	84	5.0	65
Longford	53	28	30	58	6.7	49
Louth	203	91	87	178	6.4	134
Meath	119	87	70	157	3.9	108
Offaly	89	51	54	105	5.9	89
Westmeath	133	71	62	133	6.7	113
Wexford	227	102	120	222	6.7	167
Wicklow	157	99	98	197	6.2	148
<b>MUNSTER</b>	2,096	1,057	1,024	2,081	7.1	1,636
Clare	186	106	91	197	7.1	152
Cork City	482	93	127	220	7.4	170
Cork County	369	329	306	635	7.0	493
Kerry	261	131	128	259	7.4	213
Limerick City	223	37	45	82	6.2	64
Limerick County	89	117	98	215	6.5	180
North Tipperary	132	76	68	144	8.7	112
South Tipperary	154	67	73	140	6.7	106
Waterford City	142	32	35	67	5.9	56
Waterford County	58	69	53	122	7.8	90
<b>CONNACHT</b>	937	515	405	920	7.3	730
Galway City	286	18	14	32	1.8	25
Galway County	120	204	147	351	8.8	274
Leitrim	42	30	30	60	8.3	44
Mayo	224	142	102	244	7.9	194
Roscommon	119	73	52	125	8.5	104
Sligo	146	48	60	108	7.1	89
<b>ULSTER (PART OF)</b>	484	267	245	512	7.7	426
Cavan	136	72	67	139	8.7	116
Donegal	266	155	123	278	7.6	232
Monaghan	82	40	55	95	6.8	78
<b>STATE</b>	6,657	3,417	3,240	6,657	6.3	5,146
<b>REGIONAL AUTHORITIES:</b>						
Border	875	436	422	858	7.3	693
Midland	348	203	177	380	6.0	316
West	749	437	315	752	7.3	597
Dublin	1,692	791	833	1,624	5.5	1,200
Mid-East	469	278	258	536	4.5	377
Mid-West	630	336	302	638	7.1	508
South-East	782	383	372	755	6.6	579
South-West	1,112	553	561	1,114	7.2	876

<sup>(a)</sup> Annual rates based on 2006 Population.

<sup>(b)</sup> Figures for deaths occurring in Dublin are only available at Regional Authority level

**Table 8 Deaths registered classified by cause and age group**

Cause of Death	ICD-9 Code	65 COD Code	All Ages			Age Group									
			Persons	Males	Females	0-4	5-14	15-24	25-34	35-44	45-54	55-64	65-74	75-84	85 and over
<b>Total deaths</b>	001-999	00	6,657	3,417	3,240	65	13	93	99	154	386	701	1,207	2,128	1,811
<b>Infectious and parasitic diseases:-</b>	001-139, 279.8	01	40	19	21	-	-	2	2	-	5	9	5	10	7
Tuberculosis	010-018,137	02	13	6	7	-	-	-	1	-	1	3	2	6	-
Meningococcal infection	036	03	1	1	-	-	-	1	-	-	-	-	-	-	-
AIDS (HIV Disease)	042-044, 279.8	04	1	1	-	-	-	-	-	-	-	1	-	-	-
Viral Hepatitis	070	05	6	5	1	-	-	-	-	-	3	2	-	-	1
other infectious and parasitic diseases	Rem(001-139)		19	6	13	-	-	1	1	-	1	3	3	4	6
<b>Neoplasms</b>	140-239	06	2,030	1,104	926	-	4	7	12	54	173	309	541	634	296
<b>Malignant Neoplasms of the:-</b>	140-208	07	2,004	1,089	915	-	4	7	12	53	173	309	528	626	292
lip, oral cavity, pharynx	140-149	08	28	22	6	-	-	-	-	1	5	1	13	5	3
oesophagus	150	09	93	57	36	-	-	-	1	1	9	14	21	33	14
stomach	151	10	84	47	37	-	-	-	-	1	4	10	25	29	15
colon	153	11	161	100	61	-	-	-	-	2	10	25	49	48	27
rectum and anus	154	12	97	58	39	-	-	-	-	4	10	13	25	27	18
liver and the intrahepatic bile ducts	155	13	35	18	17	-	-	-	-	-	2	5	11	11	6
pancreas	157	14	117	61	56	-	-	-	-	2	7	22	38	37	11
larynx and trachea/bronchus/lung	161-162	15	407	261	146	-	-	-	-	5	31	79	128	135	29
skin	172	16	30	16	14	-	-	-	3	-	7	5	6	8	1
breast	174-175	17	147	2	145	-	-	-	2	14	25	28	29	24	25
cervix uteri	180	18	13	-	13	-	-	-	-	1	4	3	4	1	-
other parts of uterus	179,182	19	20	-	20	-	-	-	-	-	2	4	5	7	2
ovary	183.0	20	78	-	78	-	-	-	1	6	5	17	23	22	4
prostate	185	21	131	131	-	-	-	-	-	-	1	3	35	56	36
kidney	189.0	22	49	26	23	-	-	-	-	1	5	13	9	12	9
bladder	188	23	51	32	19	-	-	-	1	2	1	2	10	17	18
lymph/haematopoietic tissue	200-208	24	184	115	69	-	1	2	1	3	21	26	38	67	25
other malignant neoplasms	Rem(140-208)		279	143	136	-	3	5	3	10	24	39	59	87	49
<b>Diseases of the blood and blood-forming organs, immunological disorders (excl 279.8)</b>	279-289	25	15	7	8	-	-	1	-	-	-	1	2	5	6
<b>Endocrine, Nutritional and metabolic diseases</b>	240-278	26	178	100	78	-	-	5	2	1	-	19	39	69	43
Diabetes mellitus	250	27	132	78	54	-	-	1	-	1	-	12	28	56	34
<b>Mental and behavioural disorders</b>	290-319	28	147	69	78	-	-	6	7	13	16	8	11	48	38
Alcohol abuse (including alcoholic psychosis)	291,303	29	32	17	15	-	-	1	1	5	13	7	3	2	-
Drug dependence, toxicomania	304-305	30	22	17	5	-	-	5	6	8	2	1	-	-	-
<b>Diseases of the nervous system and the sense organs</b>	320-389	31	155	78	77	3	2	3	5	8	12	9	24	45	44
Meningitis	320-322	32	2	2	-	-	-	-	-	-	1	-	1	-	-
<b>Diseases of the Circulatory system:-</b>	390-459	33	2,318	1,126	1,192	-	1	7	8	24	98	198	377	787	818
Ischaemic heart disease	410-414	34	1,176	646	530	-	-	1	1	16	50	128	219	381	380
(Acute myocardial infarction)	(410)		680	377	303	-	-	-	1	9	26	77	132	221	214
other heart disease	420-423, 425-429	35	362	176	186	-	1	4	3	2	15	19	46	119	153
Cerebrovascular disease	430-438	36	454	156	298	-	-	2	1	4	22	23	59	170	173
other diseases of circulatory system	Rem(390-459)		326	148	178	-	-	-	3	2	11	28	53	117	112

<b>Diseases of the Respiratory system</b>	460-519	37	870	396	474	3	-	1	1	5	13	50	109	322	366	
Influenza	487	38	-	-	-	-	-	-	-	-	-	-	-	-	-	
Pneumonia	480-486	39	423	164	259	3	-	1	-	4	4	17	34	150	210	
Chronic Lower respiratory disease	490-494,496	40	288	158	130	-	-	-	1	-	6	23	59	115	84	
Asthma	493	41	11	4	7	-	-	-	1	-	2	1	3	3	1	
other diseases of the respiratory system	Rem(460-519)		159	74	85	-	-	-	-	1	3	10	16	57	72	
<b>Diseases of the Digestive system</b>	520-579	42	281	147	134	-	-	-	4	14	22	49	30	92	70	
Ulcer of stomach, duodenum and jejunum	531-534	43	38	19	19	-	-	-	-	1	4	3	4	14	12	
Chronic liver disease	571	44	61	37	24	-	-	-	2	8	10	22	9	7	3	
other diseases of the digestive system	Rem(520-579)		182	91	91	-	-	-	2	5	8	24	17	71	55	
Diseases of the skin and subcutaneous tissue	680-709	45	23	10	13	-	-	-	-	-	-	2	2	12	7	
Diseases of the musculoskeletal system/connective tissue	710-739	46	50	16	34	-	-	1	-	-	-	5	10	18	16	
Rheumatoid arthritis and osteoarthritis	714-715	47	25	8	17	-	-	-	-	-	-	3	5	7	10	
Diseases of the genitourinary system	580-629	48	133	72	61	-	-	2	-	-	1	3	19	50	58	
Diseases of the kidney and ureter	580-594	49	81	47	34	-	-	2	-	-	-	3	13	32	31	
Complications of pregnancy, childbirth and puerperium	630-676	50	-	-	-	-	-	-	-	-	-	-	-	-	-	
Certain conditions originating in the perinatal period <sup>2</sup>	760-779	51	25	14	11	25	-	-	-	-	-	-	-	-	-	
Congenital malformations and chromosomal abnormalities	740-759	52	49	26	23	28	1	4	4	2	4	3	2	-	1	
Congenital malformations of the:- nervous system	740-742	53	10	5	5	6	1	-	2	-	1	-	-	-	-	
circulatory system	745-747	54	14	9	5	7	-	-	1	2	1	1	2	-	-	
<b>Symptoms, signs, abnormal findings, ill-defined causes</b>	780-799	55	23	17	6	6	-	1	2	2	1	1	-	3	7	
Sudden infant death syndrome	798.0	56	5	5	-	5	-	-	-	-	-	-	-	-	-	
Unknown and unspecified causes	798.1-799.9	57	8	6	2	1	-	1	1	2	1	1	-	-	1	
Injury and poisoning	800-999		320	216	104	-	5	53	52	31	41	35	36	33	34	
<b>EXTERNAL CAUSES</b>																
External causes of injury and poisoning	E800-E999	58	358	243	115	-	5	59	59	41	49	36	38	35	36	
Accidents	E800-E929	59	233	146	87	-	5	36	23	23	27	18	33	33	35	
Transport accidents	E800-E848	60	64	45	19	-	2	19	11	4	7	7	10	4	-	
Road transport accidents	E810-E829, E929.0		60	41	19	-	2	19	11	4	4	6	10	4	-	
Motor vehicle transport accidents	E810-E819		57	38	19	-	1	18	10	4	4	6	10	4	-	
Accidental falls	E880-E888	61	87	35	52	-	-	3	-	5	4	6	13	22	34	
Accidental poisoning	E850-E869	62	27	21	6	-	-	5	6	8	5	-	3	-	-	
other accidents	Rem(E800-E929)		55	45	10	-	3	9	6	6	11	5	7	7	1	
Suicide and intentional self harm	E950-E959	63	114	90	24	-	-	21	32	16	20	18	5	1	1	
Homicide, assault	E960-E969	64	3	1	2	-	-	-	-	2	1	-	-	-	-	
Events of undetermined intent	E980-E989	65	6	5	1	-	-	2	3	-	1	-	-	-	-	
All other external causes	Rem(E930-E999)		2	1	1	-	-	-	1	-	-	-	-	1	-	

<sup>2</sup> Stillbirths not included

**Table 9 Deaths registered, classified by principal cause<sup>1</sup>**

Area of residence	Population according to the Census of Population 2006	Total deaths	cause of death :							
			Malignant Neoplasms of:							Diabetes
			151	150, 152-159	162	174-175	179-189	200-208	Rem. 140-208	
<b>LEINSTER</b>	2,295,123	3,144	41	284	202	79	150	90	154	48
Carlow	50,349	69	-	5	11	4	3	-	-	1
Dublin City	506,211	985	15	77	74	22	44	27	52	12
South Dublin	246,935	199	-	16	15	3	13	9	9	4
Fingal	239,992	167	2	22	10	3	7	4	13	1
Dun Laoghaire Rathdown	194,038	273	5	35	20	5	11	4	15	2
Kildare	186,335	182	1	16	14	6	5	5	13	8
Kilkenny	87,558	135	1	16	6	4	4	1	4	4
Laois	67,059	84	-	7	8	2	8	3	2	1
Longford	34,391	58	1	6	2	2	3	1	1	-
Louth	111,267	178	4	12	9	4	10	9	7	2
Meath	162,831	157	2	10	7	5	13	2	7	3
Offaly	70,868	105	2	10	3	3	4	7	5	1
Westmeath	79,346	133	2	14	6	2	7	6	6	1
Wexford	131,749	222	2	23	8	12	9	4	8	4
Wicklow	126,194	197	4	15	9	2	9	8	12	4
<b>MUNSTER</b>	1,173,340	2,081	24	166	112	38	118	51	87	57
Clare	110,950	197	-	17	8	2	8	5	10	4
Cork City	119,418	220	6	22	14	5	10	6	7	4
Cork County	361,877	635	6	58	34	12	39	16	24	20
Kerry	139,835	259	2	18	11	5	9	5	13	8
Limerick City	52,539	82	-	5	2	3	6	2	4	1
Limerick County	131,516	215	5	12	18	3	11	5	8	4
North Tipperary	66,023	144	2	10	4	2	7	1	8	4
South Tipperary	83,221	140	2	14	8	3	13	7	6	7
Waterford City	45,748	67	-	5	4	1	6	1	3	1
Waterford County	62,213	122	1	5	9	2	9	3	4	4
<b>CONNACHT</b>	504,121	920	10	65	40	21	66	34	35	17
Galway City	72,414	32	1	3	2	-	-	2	3	-
Galway County	159,256	351	4	25	16	9	27	16	13	8
Leitrim	28,950	60	-	5	4	2	2	2	3	-
Mayo	123,839	244	2	20	9	8	15	7	6	4
Roscommon	58,768	125	1	6	5	-	9	3	6	3
Sligo	60,894	108	2	6	4	2	13	4	4	2
<b>ULSTER (PART OF)</b>	267,264	512	9	39	31	9	20	9	20	10
Cavan	64,003	139	2	6	10	2	4	2	6	5
Donegal	147,264	278	7	25	16	5	11	6	8	3
Monaghan	55,997	95	-	8	5	2	5	1	6	2
<b>STATE</b>	4,239,848	6,657	84	554	385	147	354	184	296	132
<b>REGIONAL AUTHORITIES:</b>										
Border	468,375	858	15	62	48	17	45	24	34	14
Midland	251,664	380	5	37	19	9	22	17	14	3
West	414,277	752	8	54	32	17	51	28	28	15
Dublin	1,187,176	1,624	22	150	119	33	75	44	89	19
Mid-East	475,360	536	7	41	30	13	27	15	32	15
Mid-West	361,028	638	7	44	32	10	32	13	30	13
South-East	460,838	755	6	68	46	26	44	16	25	21
South-West	621,130	1,114	14	98	59	22	58	27	44	32

<sup>1</sup> See appendix for detailed description



## and area of residence of deceased

cause of death :												
Diseases of Circulatory System:				Diseases of Respiratory System:			Diseases of the digestive system	740-759	760-779	Injury and Poisoning:		Remainder
401-405	410-414	430-438	Rem. 390-459	480-486	466, 490-493, 496	Rem. 460-519				E810-E825	other	
41	536	212	262	208	131	82	151	22	14	22	118	297
-	14	3	4	4	3	7	4	1	-	1	1	3
17	159	59	77	79	49	32	57	6	1	2	30	94
4	27	11	18	9	4	4	11	2	1	1	11	27
2	31	5	15	9	8	3	6	5	-	2	3	16
3	51	24	23	20	5	9	15	1	1	-	8	16
2	29	15	21	5	3	3	9	2	-	1	8	16
3	26	6	14	12	11	3	4	-	2	2	4	8
1	14	7	5	3	3	-	3	1	1	1	4	10
-	10	5	8	5	1	1	2	-	-	-	-	10
2	31	12	10	9	10	7	6	-	3	2	11	18
1	32	8	17	8	4	5	9	1	1	2	6	14
1	16	9	7	6	7	1	7	1	-	2	3	10
1	26	13	6	13	3	3	2	-	-	1	5	16
2	41	18	15	10	12	-	10	1	1	3	19	20
2	29	17	22	16	8	4	6	1	3	2	5	19
23	402	144	187	123	78	48	78	21	9	17	82	216
2	49	13	17	11	3	5	7	3	-	-	11	22
3	36	10	12	18	11	8	12	3	1	1	8	23
5	121	40	57	40	23	8	23	9	3	9	32	56
7	50	32	22	17	16	6	8	-	-	3	10	17
-	11	4	9	5	6	1	3	-	1	-	3	16
2	41	15	26	14	8	5	6	2	2	1	4	23
1	33	10	17	3	5	4	5	2	-	1	6	19
2	21	7	11	6	1	3	4	1	1	2	4	17
-	15	3	7	4	-	3	3	-	-	-	1	10
1	25	10	9	5	5	5	7	1	1	-	3	13
5	151	60	107	49	40	24	37	3	-	14	42	100
-	4	3	4	1	1	-	1	1	-	-	3	3
4	58	18	36	22	13	9	15	1	-	7	16	34
1	9	8	7	4	3	2	-	-	-	1	1	6
-	39	17	27	8	16	6	12	1	-	3	12	32
-	23	8	20	10	4	2	4	-	-	3	6	12
-	18	6	13	4	3	5	5	-	-	-	4	13
6	87	38	57	43	34	10	15	3	2	6	19	45
-	20	10	18	10	14	1	4	1	-	1	4	19
5	48	20	31	27	16	5	9	1	1	4	11	19
1	19	8	8	6	4	4	2	1	1	1	4	7
75	1,176	454	613	423	283	164	281	49	25	59	261	658
9	145	64	87	60	50	24	26	3	5	9	35	82
3	66	34	26	27	14	5	14	2	1	4	12	46
4	124	46	87	41	34	17	32	3	-	13	37	81
26	268	99	133	117	66	48	89	14	3	5	52	153
5	90	40	60	29	15	12	24	4	4	5	19	49
5	134	42	69	33	22	15	21	7	3	2	24	80
8	142	47	60	41	32	21	32	4	5	8	32	71
15	207	82	91	75	50	22	43	12	4	13	50	96

**Table 10 Deaths registered of infants under 1 year, classified by cause, sex and age group**

Cause of Death	ICD-9 Code	Total under 1 day	1 day and under 7 days	1 week and under 4 weeks	4 weeks and under 1 year	Total	
						M	F
<b>ALL CAUSES</b>		26	9	11	12	31	27
Enteritis and other diarrhoeal diseases	008,009	-	-	-	-	-	-
Tuberculosis, all forms	010-018,137	-	-	-	-	-	-
Whooping cough	033	-	-	-	-	-	-
Other infective and parasitic diseases	Rem(001-139)	-	-	-	-	-	-
Meningitis	320-322	-	-	-	-	-	-
Other inflammatory diseases of the central nervous system	323-326	-	-	-	-	-	-
Pneumonia	480-486	-	-	-	1	1	-
Influenza	487	-	-	-	-	-	-
Other diseases of respiratory system	460-479, 494-519	-	-	-	-	-	-
Diseases of digestive system	520-579	-	-	-	-	-	-
Congenital anomalies:							
Anencephalus and similar anomalies	740	3	-	-	-	2	1
Spina Bifida	741	1	-	-	-	-	1
Other congenital anomalies of digestive system	742	1	-	-	-	1	-
Congenital anomalies of eye, ear, face and neck	743,744	-	-	-	-	-	-
Congenital anomalies of the heart	745,746	-	2	1	2	2	3
Other congenital anomalies of circulatory system	747	-	-	2	-	1	1
Congenital anomalies of respiratory system	748	-	-	-	-	-	-
Other congenital anomalies of upper alimentary tract inc. cleft palate and lip	749,750	-	-	-	-	-	-
Other congenital anomalies of digestive system	751	-	-	-	-	-	-
Congenital anomalies of genital organs	752	-	-	-	-	-	-
Congenital anomalies of urinary system	753	1	-	-	-	1	-
Congenital musculoskeletal deformities including limbs	754-756	1	1	-	-	-	2
Congenital anomalies of the integument	757	-	-	-	-	-	-
Chromosomal anomalies	758	2	1	2	1	2	4
Other and unspecified congenital anomalies	759	2	-	1	2	1	4
Fetus or newborn affected by maternal conditions, maybe unrelated to the pregnancy							
Fetus or newborn affected by maternal complications of pregnancy	760	-	-	-	-	-	-
Fetus or newborn affected by complications of placenta, cord and membranes	761	2	1	-	-	1	2
Birth injury and difficult labour	762	1	-	-	-	1	-
Slow fetal growth and malnutrition	763,767	-	-	-	-	-	-
Disorders relating to short gestation and unspecified low birthweight	764	-	-	-	-	-	-
Disorders relating to long gestation and high birthweight	765	3	2	-	1	2	4
Intrauterine hypoxia and birth asphyxia	766	-	-	-	-	-	-
Respiratory distress syndrome	768	1	-	-	-	1	-
Other respiratory conditions of fetus and newborn	769	2	-	-	-	1	1
	770	-	2	-	-	2	-
Infections specific to the perinatal period	771	1	-	-	-	-	1
Fetal and neo-natal haemorrhage	772	-	-	-	-	-	-
Haemolytic disease of newborn	773,774	1	-	-	-	1	-
Endocrine and metabolic disturbances specific to the fetus and newborn							
Haematological disorders of fetus and newborn	775	-	-	-	-	-	-
Perinatal disorders of digestive system	776	-	-	1	-	1	-
Conditions involving the integument and temperature regulation of fetus and newborn	777	1	-	-	1	2	-
Other and ill-defined conditions originating in the perinatal period	778	2	-	1	-	1	2
Sudden death, cause unknown	779	1	-	-	-	-	1
	798	-	-	2	3	5	-
Fractures	800-829	-	-	-	-	-	-
Intracranial and internal injuries, including nerves	850-869, 950-957	-	-	-	-	-	-
Burns	940-949	-	-	-	-	-	-
Poisonings and toxic effects	960-989	-	-	-	-	-	-
Other injuries and poisonings	Rem(800-999)	-	-	-	-	-	-
All other causes		-	-	1	1	2	-

**Table 11 Infant and neonatal mortality by area of residence of deceased**

Area of residence	Infant mortality		Neonatal mortality	
	Number	Rate	Number	Rate
<b>Leinster</b>	29	3.0	24	2.5
Carlow	0	0.0	0	0.0
Dublin City	3	1.8	3	1.8
South Dublin	2	1.9	0	0.0
Fingal	4	3.2	4	3.2
Dun Laoghaire Rathdown	1	1.7	1	1.7
Kildare	1	1.1	1	1.1
Kilkenny	3	9.4	3	9.4
Laois	3	9.8	2	6.6
Longford	0	0.0	0	0.0
Louth	4	8.5	3	6.3
Meath	2	2.5	2	2.5
Offaly	1	3.3	1	3.3
Westmeath	0	0.0	0	0.0
Wexford	2	3.5	2	3.5
Wicklow	3	5.3	2	3.5
<b>Munster</b>	24	5.3	18	4.0
Clare	4	8.6	2	4.3
Cork City	2	5.8	1	2.9
Cork County	11	7.4	9	6.1
Kerry	0	0.0	0	0.0
Limerick City	1	4.9	1	4.9
Limerick County	3	5.6	3	5.6
North Tipperary	0	0.0	0	0.0
South Tipperary	1	3.4	1	3.4
Waterford City	0	0.0	0	0.0
Waterford County	2	6.6	1	3.3
<b>Connacht</b>	2	1.1	2	1.1
Galway City	1	4.2	1	4.2
Galway County	1	1.6	1	1.6
Leitrim	0	0.0	0	0.0
Mayo	0	0.0	0	0.0
Roscommon	0	0.0	0	0.0
Sligo	0	0.0	0	0.0
<b>Ulster</b>	3	3.0	2	2.0
Cavan	1	3.8	0	0.0
Donegal	1	1.8	1	1.8
Monaghan	1	5.5	1	5.5
<b>State</b>	58	3.4	46	2.7
<b>REGIONAL AUTHORITIES:</b>				
Border	7	3.9	5	2.8
Midland	4	3.5	3	2.7
West	2	1.3	2	1.3
Dublin	10	2.2	8	1.7
Mid-East	6	2.7	5	2.2
Mid-West	8	5.4	6	4.1
South-East	8	4.2	7	3.7
South-West	13	5.7	10	4.4

Infant mortality rates: Deaths of infants under one year per 1,000 live births, classified by area of residence of mother

Neonatal mortality rates: Deaths of infants under 28 days per 1,000 live births, classified by area of residence of mother

Infant and neonatal mortality rates in some areas, based on small numbers are subject to considerable fluctuation and caution should be exercised in their interpretation



## **Appendix**

## Glossary of terms

### NUTS III Regional Authority areas

Border, Midland, West, Dublin, Mid-East, Mid-West, South-East, South-West

Border: Cavan, Donegal, Leitrim, Louth, Monaghan, Sligo.

Midland: Laois, Longford, Offaly, Westmeath.

West: Galway City, Galway County, Mayo, Roscommon.

Dublin: Dublin City, South Dublin, Fingal, Dun Laoghaire-Rathdown.

Mid-East: Kildare, Meath, Wicklow.

Mid-West: Clare, Limerick City, Limerick County, North Tipperary.

South-East: Carlow, Kilkenny, South Tipperary, Waterford City, Waterford County, Wexford.

South-West: Cork City, Cork County, Kerry.

### Causes of Death

#### ICD 9 Codes

#### Description

140-208	Malignant Neoplasms of:
151	- Stomach
150, 152 - 159	- Digestive organs and peritoneum
162	- Trachea, bronchus and lung
174-175	- Breast
179 - 189	- Genitourinary organs
200 - 208	- Lymphatic and haematopoietic tissue
390 - 459	Diseases of Circulatory system
401 - 405	- Hypertensive disease
410 - 414	- Ischaemic heart disease
430 - 438	- Cerebrovascular disease
460 - 486	Diseases of Respiratory system
480 - 486	- Pneumonia
466, 490 - 493, 496	- Bronchitis, emphysema and asthma, incl. Obstructive airways disease
740 - 759	Congenital anomalies
760 - 779	Certain causes of perinatal mortality
E810 - E825	Motor vehicle accidents incl. non-traffic accidents

**Causes of death Eurostat shortlist (August 1998)**

Nr	Disease or external cause	ICD-9 Code	ICD-10 Code
00	All causes of death	001-E999	A00-Y89
01	Infectious and Parasitic Diseases:-	001-139,279.8	A00-B99
02	Tuberculosis	010-018,137	A15-A19,B90
03	Meningococcal Infection	036	A39
04	AIDS (HIV Disease)	042-044,279.8	B20-B24
05	Viral Hepatitis	070	B15-B19
	other Infectious and Parasitic Diseases	Rem (001-139)	Rem (A00-B99)
06	Neoplasms	140-239	C00-D48
07	Malignant Neoplasms of the:-	140-208	C00-C97
08	Lip, Oral Cavity, Pharynx	140-149	C00-C14
09	Oesophagus	150	C15
10	Stomach	151	C16
11	Colon	153	C18
12	Rectum and Anus	154	C19-C20-C21
13	Liver and the Intrahepatic Bile Ducts	155	C22
14	Pancreas	157	C25
15	Larynx and Trachea/Bronchus/Lung	161-162	C32-C34
16	Skin	172	C43
17	Breast	174-175	C50
18	Cervix Uteri	180	C53
19	Other Parts of the Uterus	179,182	C54-C55
20	Ovary	183.0	C56
21	Prostate	185	C61
22	Kidney	189.0	C64
23	Bladder	188	C67
24	Lymph/Haematopoietic Tissue	200-208	C81-C96
	other Malignant Neoplasms	Rem (140-208)	Rem. (C00-C97)
25	Diseases of the Blood and Blood-forming Organs, Immunological disorders <sup>1</sup>	279-289	D50-D89
26	Endocrine, Nutritional and Metabolic Diseases	240-278	E00-E90
27	Diabetes Mellitus	250	E10-E14
28	Mental and Behavioural Disorders	290-319	F00-F99
29	Alcohol abuse (including Alcoholic Psychosis)	291,303	F10
30	Drug Dependence, Toxicomania	304-305	F11-F16,F18-F19
31	Diseases of the Nervous System and the Sense Organs	320-389	G00-H95
32	Meningitis	320-322	G00-G03
33	Diseases of the Circulatory System:-	390-459	I00-I99
34	Ischaemic Heart Disease	410-414	I20-I25
	<i>(Acute Myocardial Infarction)</i>	410	I21
35	Other Heart Disease	420-423,425-429	I30-I33,I39-I52
36	Cerebrovascular Disease	430-438	I60-I69
	other Diseases of the Circulatory System	Rem (390-459)	Rem. (I00-I99)
37	Diseases of the Respiratory System	460-519	J00-J99
38	Influenza	487	J10-J11
39	Pneumonia	480-486	J12-J18
40	Chronic Lower Respiratory Disease	490-494,496	J40-J47
41	Asthma	493	J45-J46
	other Diseases of the Respiratory System	Rem (460-519)	Rem. (J00-J99)
42	Diseases of the Digestive System	520-579	K00-K93
43	Ulcer of Stomach, Duodenum and Jejunum	531-534	K25-K28
44	Chronic Liver Disease	571.0-571.9	K70,K73-K74
	other Diseases of the Digestive System	Rem (520-579)	Rem. (K00-K93)
45	Diseases of the Skin and Subcutaneous Tissue	680-709	L00-L99
46	Diseases of the Musculoskeletal System/Connective Tissue	710-739	M00-M99
47	Rheumatoid Arthritis and Osteoarthritis	714-715	M05-M06,M15-M19
48	Diseases of the Genitourinary System	580-629	N00-N99
49	Diseases of the Kidney and Ureter	580-594	N00-N29
50	Complications of Pregnancy, Childbirth and Puerperium	630-676	O00-O99
51	Certain Conditions Originating in the Perinatal Period (stillbirths not included)	760-779	P00-P96
52	Congenital Malformations and Chromosomal Abnormalities	740-759	Q00-Q99
53	Congenital malformations of the Nervous System	740-742	Q00-Q07
54	Congenital malformations of the Circulatory System	745-747	Q20-Q28
55	Symptoms, Signs, Abnormal Findings, Ill-defined Causes	780-799	R00-R99
56	Sudden Infant Death Syndrome	798.0	R95
57	Unknown and Unspecified Causes	798.1-9,799	R96-R99
	Injury and Poisoning	800-999	S00-T98
58	External Causes of Injury and Poisoning (included in the Foregoing)	E800-E999	V01-Y89
59	Accidents	E800-E929	V01-X59
60	Transport Accidents	E800-E848	V01-V99
	Road transport Accidents	E810-E829, E929.0	V01-V80,V87,V89,Y85
	Motor vehicle transport Accidents	E810-E819	
61	Accidental Falls	E880-E888	W00-W19
62	Accidental Poisoning	E850-E869	X40-X49
	other accidents	Rem (E800-E929)	Rem (V01-X59)
63	Suicide and Intentional Self Harm	E950-E959	X60-X84
64	Homicide/Assault	E960-E969	X85-Y09
65	Cause Undetermined	E980-E989	Y10-Y34
	other External Causes	Rem (E930-E999)	

<sup>1</sup> 279.8 not included

**Estimated Population classified by Sex and Age Group, 2001 - 2006**

Sex and Age Group	Persons in April of each year					
	2001	2002	2003 <sup>1</sup>	2004 <sup>1</sup>	2005 <sup>1</sup>	2006
	000					
<b>Persons</b>						
0 - 4 years	273.2	277.6	284.8	291.1	297.4	302.2
5 - 9 "	263.7	264.1	268.1	274.6	281.2	288.3
10 - 14 "	290.6	285.7	280.9	277.5	274.7	273.9
15 - 19 "	320.4	313.2	306.8	300.8	296.0	290.2
20 - 24 "	317.6	328.3	336.0	338.7	341.3	342.5
25 - 29 "	300.8	312.7	318.9	329.4	351.4	373.1
30 - 34 "	288.6	304.7	313.4	320.8	330.2	349.4
35 - 39 "	285.1	290.9	294.1	299.9	306.4	322.1
40 - 44 "	267.6	272.0	278.1	283.7	290.7	301.3
45 - 49 "	243.9	249.6	253.2	258.3	263.8	274.8
50 - 54 "	228.2	230.8	234.8	237.5	242.5	247.1
55 - 59 "	185.8	197.3	206.7	214.5	222.0	225.3
60 - 64 "	151.7	154.3	160.4	166.1	172.4	181.7
65 - 69 "	130.8	133.5	135.3	137.9	141.4	143.4
70 - 74 "	111.8	112.1	113.7	115.3	116.9	119.1
75 - 79 "	89.2	89.8	89.6	90.2	91.1	92.5
80 - 84 "	57.6	58.9	61.5	62.7	63.5	64.9
85 years and over	40.4	41.7	42.8	44.8	47.8	48.0
<b>Total</b>	<b>3,847.2</b>	<b>3,917.2</b>	<b>3,978.9</b>	<b>4,043.8</b>	<b>4,130.7</b>	<b>4,239.8</b>
<b>Males</b>						
0 - 4 years	140.4	142.0	145.6	148.8	152.4	154.5
5 - 9 "	135.5	135.9	137.7	141.2	144.6	148.0
10 - 14 "	149.0	146.1	144.2	142.4	141.1	140.5
15 - 19 "	164.3	160.4	157.0	154.1	151.4	148.2
20 - 24 "	160.5	165.3	168.5	170.3	171.4	172.8
25 - 29 "	151.2	156.1	159.6	165.0	177.9	189.3
30 - 34 "	144.2	152.4	157.2	160.3	166.2	177.5
35 - 39 "	141.2	144.5	146.3	150.5	154.6	163.8
40 - 44 "	133.0	135.3	138.2	140.8	144.6	151.4
45 - 49 "	122.4	125.0	126.5	128.8	131.5	138.0
50 - 54 "	115.5	116.6	118.2	119.6	122.3	124.6
55 - 59 "	94.0	99.8	104.9	108.7	111.9	113.9
60 - 64 "	75.9	77.6	80.6	83.6	86.6	91.6
65 - 69 "	64.0	65.3	66.1	67.4	69.2	70.9
70 - 74 "	51.1	51.7	53.1	54.4	55.5	56.5
75 - 79 "	37.1	37.4	37.4	38.0	38.8	40.1
80 - 84 "	21.7	22.3	23.3	23.7	23.9	24.7
85 years and over	12.2	12.5	13.0	13.7	14.9	14.8
<b>Total</b>	<b>1,913.1</b>	<b>1,946.2</b>	<b>1,977.2</b>	<b>2,011.2</b>	<b>2,059.0</b>	<b>2,121.1</b>
<b>Females</b>						
0 - 4 years	132.8	135.6	139.2	142.3	144.9	147.7
5 - 9 "	128.2	128.2	130.3	133.4	136.6	140.3
10 - 14 "	141.6	139.6	136.8	135.0	133.7	133.4
15 - 19 "	156.2	152.8	149.8	146.7	144.6	142.0
20 - 24 "	157.1	163.0	167.5	168.5	170.0	169.7
25 - 29 "	149.6	156.6	159.3	164.3	173.5	183.8
30 - 34 "	144.4	152.3	156.2	160.5	164.0	171.9
35 - 39 "	143.9	146.4	147.8	149.4	151.7	158.3
40 - 44 "	134.6	136.7	139.9	142.9	146.1	149.9
45 - 49 "	121.5	124.6	126.7	129.5	132.3	136.8
50 - 54 "	112.7	114.3	116.6	117.9	120.2	122.5
55 - 59 "	91.8	97.5	101.8	105.8	110.1	111.4
60 - 64 "	75.8	76.7	79.8	82.5	85.8	90.1
65 - 69 "	66.8	68.2	69.2	70.5	72.2	72.5
70 - 74 "	60.8	60.4	60.5	60.9	61.5	62.6
75 - 79 "	52.1	52.4	52.3	52.2	52.2	52.4
80 - 84 "	35.9	36.6	38.2	39.0	39.5	40.2
85 years and over	28.2	29.2	29.8	31.1	32.9	33.2
<b>Total</b>	<b>1,934.1</b>	<b>1,971.0</b>	<b>2,001.7</b>	<b>2,032.6</b>	<b>2,071.8</b>	<b>2,118.7</b>

<sup>1</sup> Preliminary