



Central Statistics Office
An Phríomh-Oifig Staidrimh

Tourism Trends

2008

Published by the Stationery Office, Dublin, Ireland.

To be purchased from the:

Central Statistics Office, Information Section, Skehard Road, Cork,

Government Publications Sales Office, Sun Alliance House,
Molesworth Street, Dublin 2,

or through any bookseller.

© Government of Ireland 2009

Material compiled and presented by
Central Statistics Office.

Reproduction is authorised, except for commercial
purposes, provided the source is acknowledged.

ISSN 2009-1990

ISBN 978-1-4064-2347-1

Preface

Welcome to Tourism Trends 2008.

This report is also available in electronic format from the CSO website and can be downloaded free of charge at http://www.cso.ie/releasespublications/documents/tourism_travel/2008/trends08.pdf.

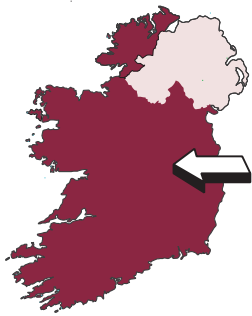
This report seeks to build on the first Tourism Trends 2007 in providing a comprehensive presentation of the data currently available in the field of tourism and travel. It brings together a wide range of tourism and travel statistics from a variety of sources, including but not limited to, different survey sources within the CSO, Fáilte Ireland and Eurostat.

In general the tables in this report contain data up to and including the year 2008. However, where this data was not available, the most up to date information available was used.

We hope that it will prove a useful reference point for individuals and organisations interested in the field of tourism and travel. We would welcome your comments and feedback and these can be sent to Tourism and Travel Section, Central Statistics Office, Skehard Road, Cork or e-mailed to tourism@cso.ie.

Contents

		Page
Chapter 1	Inbound Tourism	7
Chapter 2	Domestic Tourism	15
Chapter 3	Outbound Tourism	21
Chapter 4	Transportation	31
Chapter 5	Accommodation	37
Chapter 6	Tourism and the Economy	43
Chapter 7	Activities and Attractions	49
Chapter 8	International Comparisons	57
Appendix	Background Notes	63



Chapter 1

Inbound Tourism

Inbound travel refers to trips taken to the Republic of Ireland by non Irish residents. Survey coverage in the Republic limits this to overseas visitors only.

Overseas trips to Ireland increased by 19.2% to 7,839,000 between 2004 and 2008. The average length of stay in 2008 was just over 8 nights and this increased from 7.5 nights in 2004.

Visits by residents of Great Britain would appear to have reached a peak in 2006, rising by 10.3% to 4,060,000 from 2004. Thereafter, the number of visits has fallen by 4.6% from that level to 3,872,000 in 2008.

In 2008, 27% of all overseas trips to Ireland took place during the January-April period compared to 23% in 2004. The figures indicate an increasing preference for trips during this period and during October to December. The share of trips taken during July to August fell from 28% in 2004 to 23% in 2008 while for the October to December period, the share increased from 16% to 21%.

Dublin continued to be the most popular region visited accounting for 63% of all visits involving at least one overnight stay. This was followed by the South West region at 35%.

Table 1.1 Overseas visits to Ireland by route of travel and area of residence¹, 2004 - 2008

	2004	2005	2006	2007	2008
					'000
Total Overseas Visits	6,574	6,977	7,709	8,012	7,839
Route of Travel					
Air Cross-Channel	3,413	3,595	3,900	3,754	3,690
Sea Cross-Channel	1,192	1,085	983	1,013	890
Continental European	1,408	1,705	2,181	2,575	2,656
Transatlantic	561	592	645	669	603
Area of Residence					
Great Britain	3,681	3,822	4,060	4,032	3,872
Other Europe	1,600	1,917	2,281	2,590	2,610
USA and Canada	977	953	1,055	1,073	1,005
Other Areas	317	285	314	317	352

Source: CSO Tourism and Travel Survey

¹ A visit involves at least one overnight stay

Visits to Ireland by area of residence, 2004 - 2008

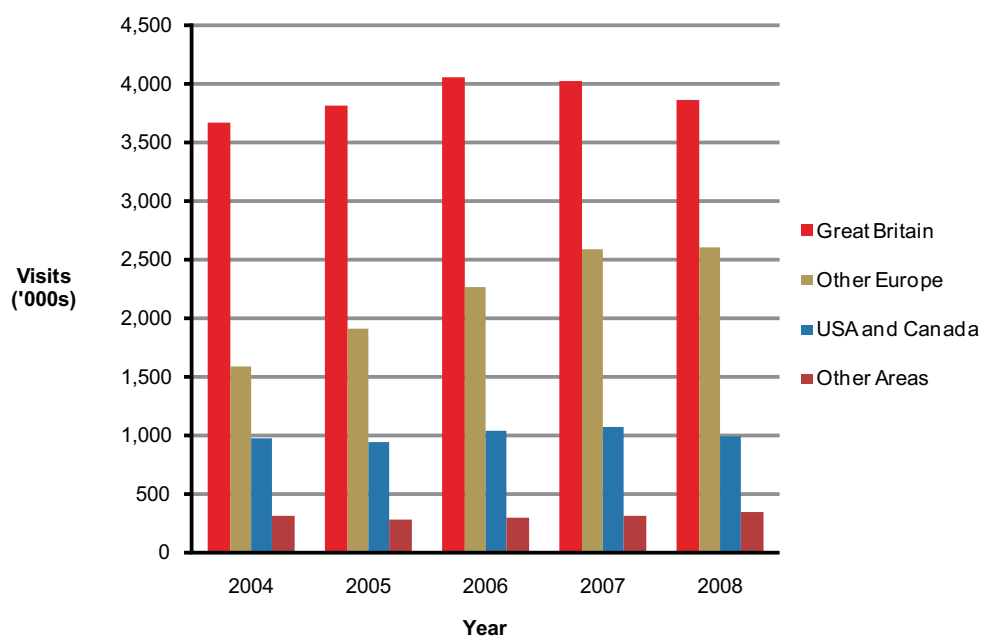


Table 1.2 Overseas visits to Ireland by detailed Area of Residence¹, 2008

Area of Residence ²	Jan-08	Feb-08	Mar-08	Apr-08	May-08	Jun-08	Jul-08	Aug-08	Sep-08	Oct-08	Nov-08	Dec-08	2008
Total Overseas Trips	437,000	471,300	634,000	603,900	805,700	749,900	835,300	946,300	690,700	662,000	499,100	503,900	7,839,000
Great Britain	224,000	259,800	365,700	301,200	397,000	325,000	341,800	488,400	318,600	323,700	261,200	266,000	3,872,400
Austria	1,000	900	3,100	5,900	7,300	7,200	5,700	6,500	8,200	3,100	1,700	2,100	52,700
Belgium	5,800	5,400	6,000	7,900	9,500	10,300	8,400	6,000	7,200	9,900	5,500	6,600	88,600
Czech Republic	3,100	3,400	3,600	4,000	6,100	3,000	4,900	4,400	4,900	4,200	3,100	2,000	46,800
Denmark	3,800	3,300	6,000	6,200	6,900	5,100	6,400	6,600	5,000	5,900	3,200	1,700	60,000
Finland	1,700	1,600	2,900	3,300	3,800	3,200	4,100	3,400	3,300	4,100	3,200	700	35,300
France	19,600	18,000	27,300	38,100	46,800	41,900	53,700	54,400	34,000	34,800	24,100	22,000	414,700
Germany	20,000	24,000	31,400	33,000	50,400	53,300	55,600	53,700	48,200	39,700	29,900	28,500	467,700
Hungary	4,200	2,600	3,700	2,500	2,400	2,400	2,300	3,400	2,700	3,800	2,300	3,100	35,300
Italy	11,400	15,500	14,600	19,100	17,000	22,300	36,000	34,300	13,700	22,600	17,600	11,500	235,500
Latvia	3,100	2,700	2,600	3,400	3,700	4,300	3,500	2,600	3,400	2,100	3,500	2,200	37,100
Lithuania	2,600	4,600	3,700	3,700	3,700	2,900	3,100	3,400	2,200	4,000	2,400	1,300	37,600
Netherlands	8,100	8,600	13,000	13,600	16,800	16,700	16,000	15,800	10,400	12,100	9,700	9,300	150,100
Poland	25,900	20,100	21,000	16,000	30,700	26,200	28,200	23,100	29,100	25,600	20,500	29,400	295,600
Portugal	1,900	2,300	2,200	2,100	3,500	1,300	6,000	2,400	2,900	3,400	2,200	3,500	33,800
Romania	3,100	1,800	2,700	1,900	2,100	2,000	4,000	3,500	1,800	2,300	2,600	1,500	29,400
Slovakia	3,900	4,100	3,400	3,100	6,000	2,800	6,000	5,200	4,500	4,500	2,000	1,500	47,100
Spain	11,600	13,400	14,000	19,600	23,500	18,200	31,400	35,500	17,400	18,700	17,500	17,300	238,100
Sweden	4,300	5,900	7,500	5,600	8,800	7,600	9,200	5,200	8,800	10,800	5,700	4,300	83,500
Other EU 27	3,900	2,800	3,800	3,600	4,600	4,000	7,600	6,900	5,200	5,300	2,800	3,000	53,400
Norway	1,800	2,400	3,800	5,100	6,600	5,000	5,000	4,200	6,400	3,900	2,200	1,500	47,900
Switzerland	3,800	2,400	4,300	4,700	6,400	3,500	8,700	8,300	5,200	4,200	4,800	3,400	59,500
Other Europe	3,000	1,900	4,600	3,700	6,900	6,200	6,000	7,600	7,300	5,700	3,500	4,200	60,500
USA	41,100	43,700	61,200	70,900	93,000	119,700	120,700	106,000	88,400	69,500	45,000	49,600	908,600
Canada	3,100	3,100	3,700	3,200	12,700	12,700	16,400	12,200	13,500	7,300	3,300	4,600	96,000
Central, South and Other Americas	1,700	2,200	1,900	1,800	2,700	3,500	4,900	4,200	2,500	4,300	2,800	2,000	34,500
South Africa	2,100	2,600	1,800	2,600	3,300	2,900	4,200	3,900	2,900	2,100	1,500	2,300	32,100
Other Africa	2,300	1,100	1,600	1,400	1,300	4,300	2,600	1,800	2,000	2,200	1,400	1,700	23,800
Japan	1,200	1,200	700	500	1,300	1,700	1,900	1,000	1,800	1,400	700	1,000	14,400
Eastern Asia	1,600	1,500	1,500	1,200	1,200	2,600	2,600	2,700	2,200	1,300	1,200	1,900	21,500
Middle East	1,100	1,200	1,600	1,500	1,300	2,200	4,500	4,300	2,500	2,000	1,700	2,200	26,200
Other Asia	2,900	2,100	3,000	4,300	3,200	4,500	4,000	3,500	3,600	3,100	3,100	3,100	40,300
Australia	6,900	4,100	5,600	8,400	13,500	18,500	17,200	17,200	17,600	12,900	5,800	7,900	135,600
New Zealand and Other Oceania	1,500	1,100	500	1,000	1,800	2,900	3,000	4,400	3,200	1,500	1,300	1,200	23,400

Source: CSO Overseas Travel Survey

¹ A visit involves at least one overnight stay

² Country estimates are subject to high levels of sample variation, affecting the interpretation of these estimates and their trends. See Background Notes.

Table 1.3 Overseas visits to Ireland by non-residents¹ - Average length of stay (nights), classified by route of travel, area of residence and reason for journey, 2004 - 2008

	<i>Nights</i>				
	2004	2005	2006	2007	2008
All overseas visits	7.5	7.6	7.6	7.3	8.1
Route of travel					
Air Cross-Channel	5.7	5.5	5.1	4.8	5.1
Sea Cross-Channel	7.7	8.2	8.3	8.4	8.7
Continental European	10.5	10.5	11.1	9.9	11.6
Transatlantic	9.9	10.0	9.6	9.5	10.2
Area of residence					
Great Britain	5.0	4.8	4.8	4.7	4.8
Other Europe	10.5	10.9	11.2	9.6	11.4
USA and Canada	9.3	9.5	9.0	9.1	9.3
Other areas	14.0	13.4	12.4	14.5	15.2
Reason for journey					
Business	5.4	5.5	4.2	5.2	4.7
Holiday/leisure/recreation	7.0	7.1	7.0	6.8	7.1
Visit to friends/relatives	7.9	8.2	8.5	7.9	8.3
Other	13.6	12.2	15.8	13.1	23.0

Source: CSO Tourism and Travel Survey
¹ A visit involves at least one overnight stay

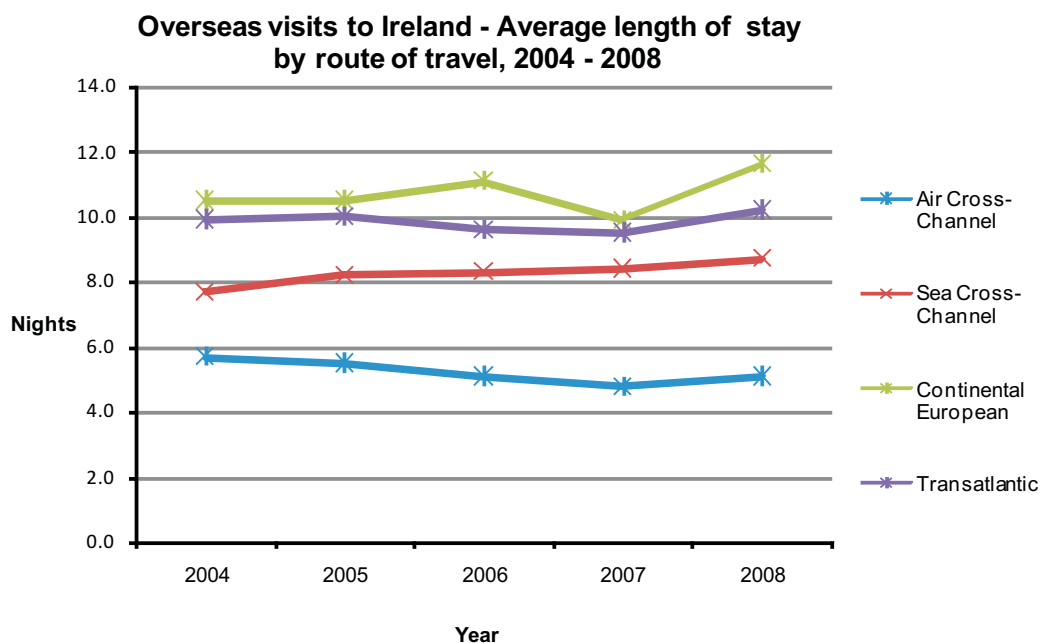


Table 1.4 Overseas visits to Ireland by reason for journey¹, 2004 - 2008

'000

Year	Business	Holiday /Leisure /Recreation	Visit to Friends/Relatives	Other
2004	926	3,413	1,807	429
2005	967	3,428	2,125	457
2006	1,100	3,775	2,323	511
2007	1,211	4,035	2,247	519
2008	1,334	3,698	2,276	531

Source: CSO Tourism and Travel Survey

¹ A visit involves at least one overnight stay

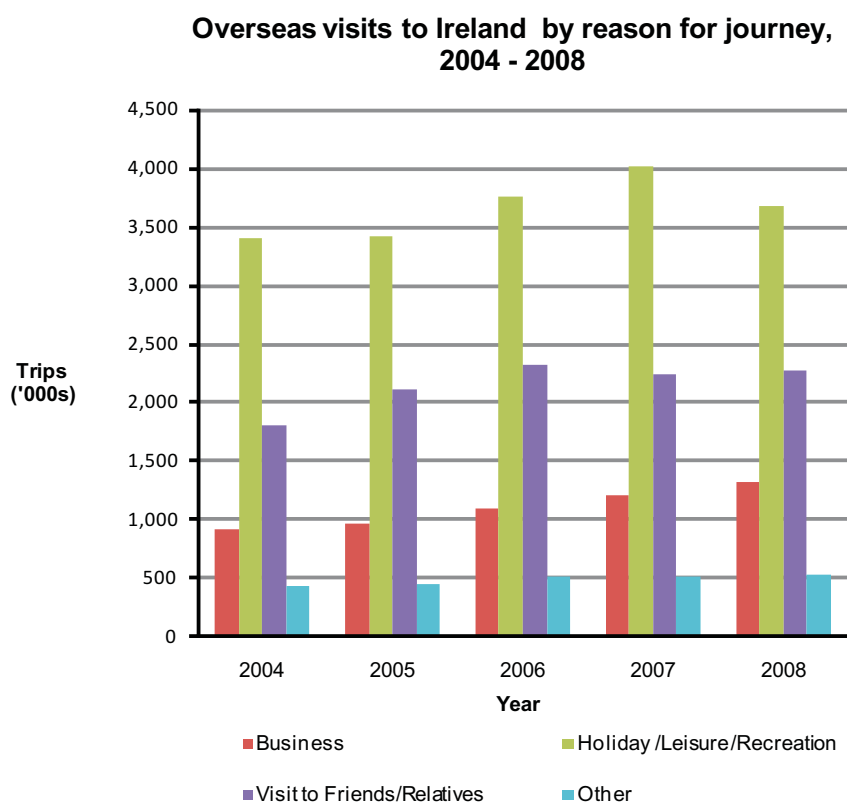


Table 1.5 Overseas visits to Ireland by season¹, 2004 - 2008

	Percentage %				
Month of Arrival	2004	2005	2006	2007	2008
January - April	23	20	22	19	27
May - June	23	23	26	25	20
July - August	28	30	28	29	23
September	10	10	9	11	9
October - December	16	17	15	16	21

Source: Fáilte Ireland Survey of Travellers

¹ A visit involves at least one overnight stay

Table 1.6 Overseas holidays to Ireland¹ - Proportion of visitors per region visited, 2004 - 2008

	Percentage %				
	2004	2005	2006	2007	2008
Dublin	61	63	64	61	63
Midlands/East	11	11	10	10	10
South East	19	17	17	17	15
South West	34	35	37	37	35
Shannon	22	20	23	20	19
West	27	27	28	27	26
North West	9	9	8	9	8

Source: Fáilte Ireland Survey of Travellers

¹ Involving at least one overnight stay

Overseas holidays to Ireland - Proportion of visitors per region visited, 2004 - 2008

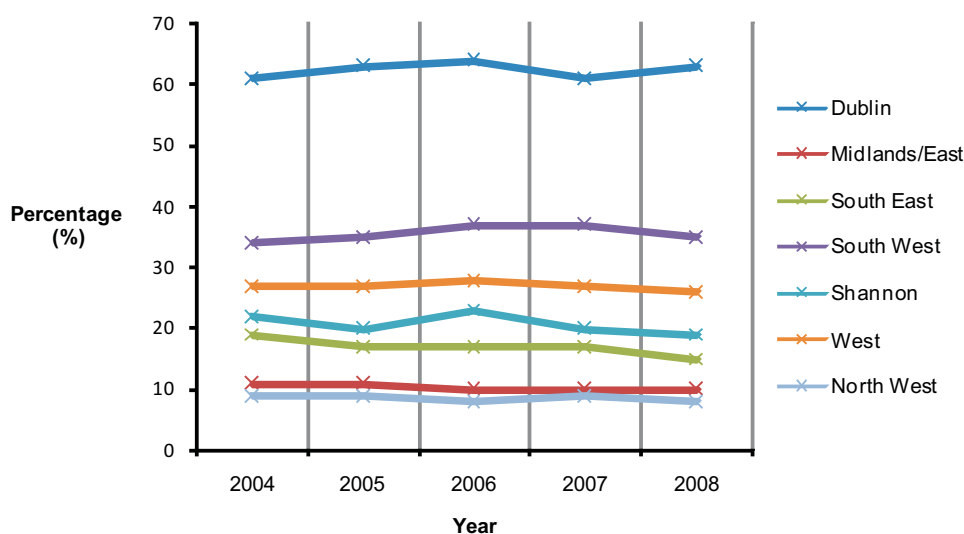


Table 1.7 Overseas holidays to Ireland by age of travelling party¹, 2004 - 2008

Age of travelling party	Percentage %				
	2004	2005	2006	2007	2008
Under 19 years	9	9	9	7	9
19 - 34 Years	29	32	30	27	32
35 - 54 Years	37	37	33	36	34
55 - 64 Years	17	13	18	16	15
65+ Years	8	10	10	15	11

Source: Fáilte Ireland Survey of Travellers

¹ Involving at least one overnight stay

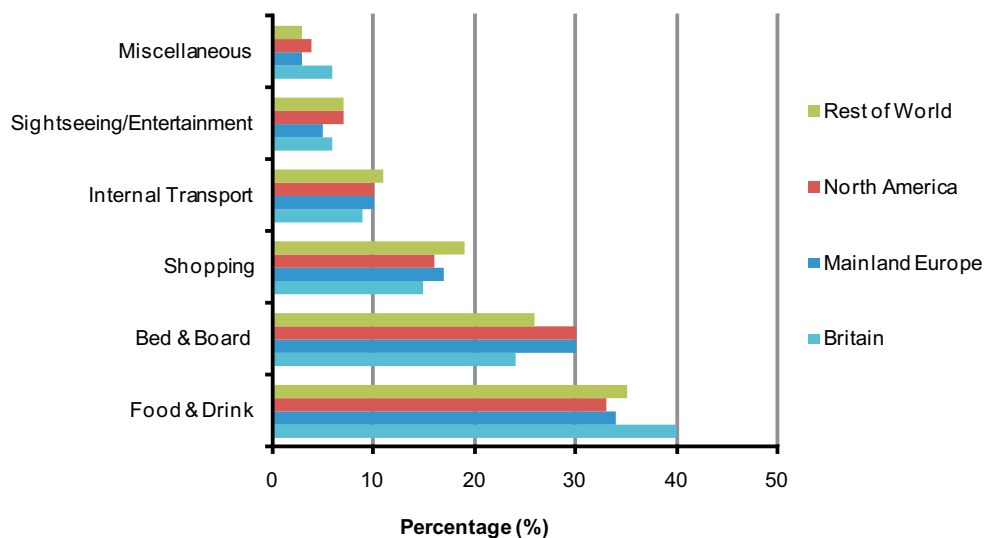
Table 1.8 Overseas visitors to Ireland¹ - Breakdown of expenditure, 2008

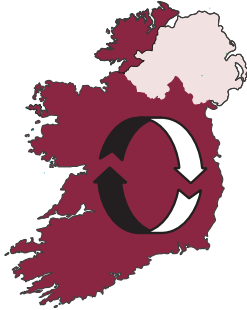
	Percentage %				Total
	Britain	Mainland Europe	North America	Rest of World	
Food & Drink	40	34	33	35	36
Bed & Board	24	30	30	26	28
Shopping	15	17	16	19	16
Internal Transport	9	10	10	11	10
Sightseeing/Entertainment	6	5	7	7	6
Miscellaneous	6	3	4	3	4

Source: Fáilte Ireland Survey of Travellers

¹ Involving at least one overnight stay

Expenditure by overseas visitors to Ireland, 2008





Chapter 2

Domestic Tourism

Domestic tourism refers to overnight trips taken by residents of the Republic of Ireland travelling to and staying in places only within the Republic of Ireland but outside their usual environment.

Irish residents took 8,339,000 domestic trips in 2008 and this grew by just over 19% from 2004. There were 5,770,000 trips made to the Southern and Eastern Region and 2,569,000 to the Border, Midland and Western Region.

In 2008, there were 26,195 nights spent away from home compared to 24,189 in 2004. The average length of stay in 2008 was about 3 nights, which fell from 3.5 nights in 2004.

Over half of all trips in 2008 were for holiday purposes while nearly one third were for visiting friends and relatives.

The number of holiday trips taken in the first quarter of the year grew by nearly 56% to 890,000 between 2004 and 2008. Holidays taken in the second and final quarters also recorded growth of over 40%, however the growth in trips for the third quarter was not quite as strong – up by just 27% since 2004.

Table 2.1 Domestic tourism by Irish residents¹ - Number of trips, nights and average length of stay by region visited, 2004 - 2008

	'000				
	2004	2005	2006	2007	2008
Total Domestic - Trips	7,001	7,173	7,310	7,942	8,339
Border, Midland and Western	2,295	2,366	2,302	2,479	2,569
Southern and Eastern	4,706	4,807	5,008	5,463	5,770
Total Domestic - Nights	24,189	24,607	24,203	26,328	26,195
Border, Midland and Western	7,657	8,199	7,538	7,947	8,016
Southern and Eastern	16,532	16,408	16,665	18,381	18,178
Average Length of Stay	3.5	3.4	3.3	3.3	3.1
Border, Midland and Western	3.3	3.5	3.3	3.2	3.1
Southern and Eastern	3.5	3.4	3.3	3.4	3.2

Source: CSO Household Travel Survey

¹ Involving at least one overnight stay

Table 2.2 Domestic tourism by Irish residents¹ - Number of trips, nights and average length of stay by age, 2004 - 2008

	'000				
	2004	2005	2006	2007	2008
Total Domestic - Trips	7,001	7,173	7,310	7,942	8,339
0-19 years	1,847	1,755	1,716	1,631	1,763
20-49 years	3,499	3,526	3,209	2,826	2,963
50+ years	1,654	1,893	2,385	3,486	3,612
Total Domestic - Nights	24,189	24,607	24,203	26,328	26,195
0-19 years	7,745	7,297	6,848	7,019	7,071
20-49 years	10,607	10,508	9,365	8,422	8,516
50+ years	5,838	6,803	7,990	10,887	10,607
Average Length of Stay	3.5	3.4	3.3	3.3	3.1
0-19 years	4.2	4.2	4.0	4.3	4.0
20-49 years	3.0	3.0	2.9	3.0	2.9
50+ years	3.5	3.6	3.4	3.1	2.9

Source: CSO Household Travel Survey

¹ Involving at least one overnight stay

Table 2.3 Domestic travel by Irish residents¹ - Number of trips, nights and average length of stay by reason for journey, 2004 - 2008

	'000				
	2004	2005	2006	2007	2008
Total Domestic - Trips	7,001	7,173	7,310	7,942	8,339
Holiday	3,142	3,348	3,827	4,271	4,398
Business	624	770	761	711	658
Visiting Friends/Relatives	2,420	2,298	2,254	2,420	2,656
Other	815	757	468	541	627
Total Domestic - Nights	24,189	24,607	24,203	26,328	26,195
Holiday	13,506	13,676	14,374	16,359	15,654
Business	1,665	1,973	2,080	1,771	1,573
Visiting Friends/Relatives	6,478	6,535	6,168	6,587	6,969
Other	2,540	2,422	1,581	1,611	2,000
Average Length of Stay	3.5	3.4	3.3	3.3	3.1
Holiday	4.3	4.1	3.8	3.8	3.6
Business	2.7	2.6	2.7	2.5	2.4
Visiting Friends/Relatives	2.7	2.8	2.7	2.7	2.6
Other	3.1	3.2	3.4	3.0	3.2

Source: CSO Household Travel Survey

¹ Involving at least one overnight stay

Domestic travel by reason for journey, 2004-2008

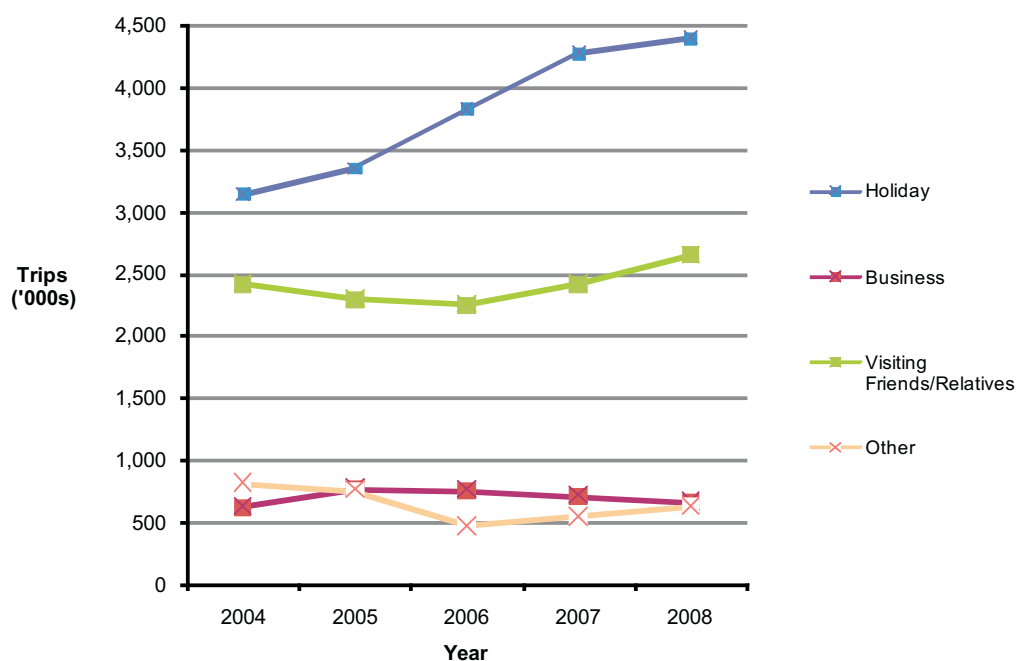


Table 2.4 Domestic travel by Irish residents¹ - Number of trips, nights and average length of stay by gender, 2004 - 2008

	'000				
	2004	2005	2006	2007	2008
Total Domestic - Trips	7,001	7,173	7,310	7,942	8,339
Male	3,299	3,472	3,477	3,787	3,931
Female	3,702	3,702	3,833	4,155	4,408
Total Domestic - Nights	24,189	24,607	24,203	26,328	26,195
Male	11,352	11,803	11,639	12,419	12,153
Female	12,838	12,803	12,564	13,908	14,042
Average Length of Stay	3.5	3.4	3.3	3.3	3.1
Male	3.4	3.4	3.3	3.3	3.1
Female	3.5	3.5	3.3	3.3	3.2

Source: CSO Household Travel Survey

¹ Involving at least one overnight stay

Table 2.5 Domestic holiday trips by Irish residents by quarter¹, 2004 - 2008

	'000			
Year	Jan- Mar	Apr - Jun	Jul - Sep	Oct - Dec
2004	572	723	1,239	608
2005	575	781	1,332	660
2006	691	816	1,527	793
2007	769	1,074	1,577	850
2008	890	1,021	1,579	908

Source: CSO Household Travel Survey

¹ Involving at least one overnight stay

Domestic holiday trips by Irish residents by quarter, 2004 - 2008

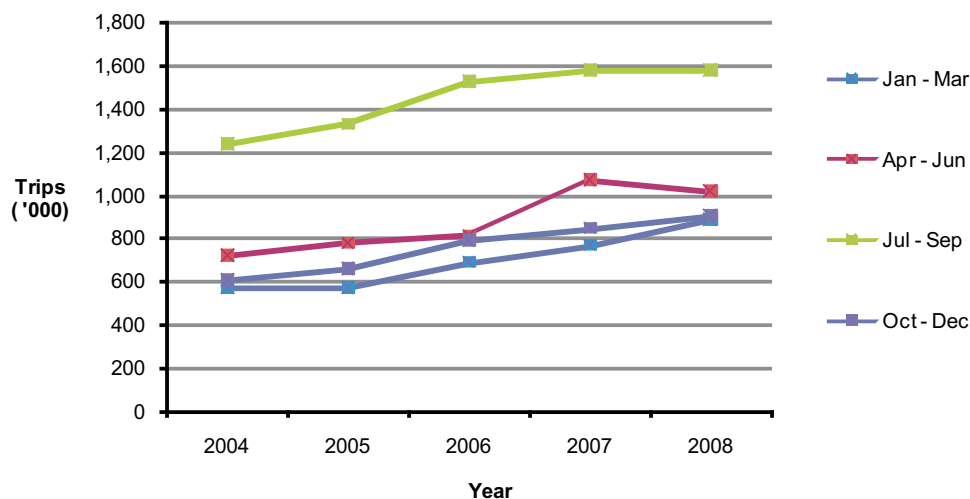


Table 2.6 Domestic travel by Irish residents¹ - Number of trips, nights and average length of stay by quarter, 2004 - 2008

	'000				
	2004	2005	2006	2007	2008
Total Domestic - Trips	7,001	7,173	7,310	7,942	8,339
Jan - Mar	1,585	1,490	1,457	1,579	1,851
Apr - Jun	1,533	1,705	1,721	1,983	1,867
Jul - Sept	2,167	2,300	2,301	2,448	2,544
Oct - Dec	1,715	1,678	1,831	1,932	2,077
Total Domestic - Nights	24,189	24,607	24,203	26,328	26,195
Jan - Mar	4,174	4,170	3,708	3,983	4,626
Apr - Jun	4,689	5,195	5,357	5,909	5,380
Jul - Sept	10,653	10,685	10,659	11,415	10,919
Oct - Dec	4,673	4,557	4,479	5,021	5,271
Average Length of Stay	3.5	3.4	3.3	3.3	3.1
Jan - Mar	2.6	2.8	2.5	2.5	2.5
Apr - Jun	3.1	3.0	3.1	3.0	2.9
Jul - Sept	4.9	4.6	4.6	4.7	4.3
Oct - Dec	2.7	2.7	2.4	2.6	2.5

Source: CSO Household Travel Survey

¹ Involving at least one overnight stay

Domestic travel by Irish residents by quarter, 2004 - 2008

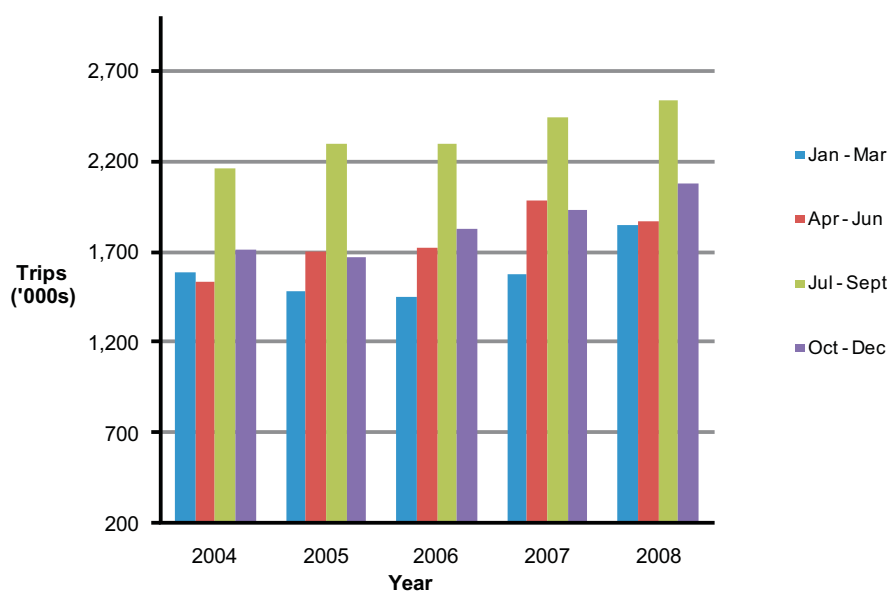


Table 2.7 Domestic travel by Irish residents¹ - Number of trips and number of nights by method of booking*, 2004 - 2008

	'000				
	2004	2005	2006	2007	2008
Total Domestic - Trips	7,001	7,173	7,310	7,942	8,339
Internet	-	200	1,239	1,619	1,958
Direct ²	-	481	2,232	2,214	2,013
Travel Agent	150	114	92	77	90
Club	192	209	172	248	214
Employer	357	309	235	227	219
No Pre-booking	6,302	5,859	3,339	3,557	3,844
Total Domestic - Nights	24,189	24,607	24,203	26,328	26,195
Internet	-	450	3,490	4,616	5,127
Direct ²	-	998	6,831	6,997	5,908
Travel Agent	640	504	401	361	356
Club	643	606	579	736	644
Employer	1,008	901	569	531	565
No Pre-booking	21,899	21,150	12,332	13,087	13,594

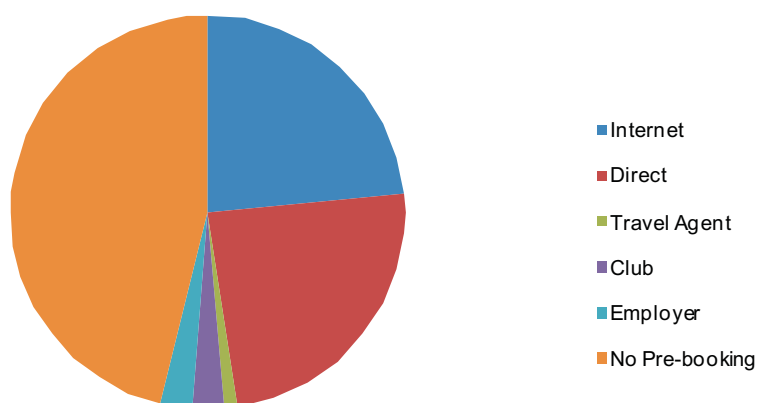
Source: CSO Household Travel Survey

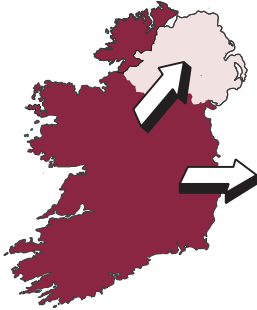
¹ Involving at least one overnight stay

² Direct booking method not including internet e.g. by Phone.

* Internet & Direct booking classifications available from Q4 2005 onwards only.

Domestic travel by Irish residents by method of booking, 2008





Chapter 3

Outbound Tourism

Outbound tourism refers to trips taken abroad by Irish residents (including Northern Ireland).

There were 8,042,000 foreign overnight trips taken by Irish residents in 2008, up 47.2% from 2004. However, much of this change took place prior to 2007 as there was just a slight increase in 2008 compared to 2007. The average length of stay was about 8 nights in 2008.

Holiday trips accounted for just over 69% of all foreign travel in 2008. Just over 18% was for visiting friends and relatives and 8.3% for business purposes.

Spain was the most popular holiday destination for Irish travellers in 2008 accounting for almost 30% of all holiday trips. This was followed by Great Britain (15.3%), France (13.0%) and the United States of America (7.8%).

Table 3.1 International travel by Irish residents¹ - Number of trips, number of nights and average length of stay by region visited, 2004 - 2008

	'000				
	2004	2005	2006	2007	2008
Total International - Trips	5,465	6,189	6,981	7,830	8,042
EU - 27*	-	-	-	6,460	6,678
Of which: EU - 25	4,614	5,101	5,775	6,385	6,611
EU - 15	4,455	4,927	5,548	6,141	6,366
Other Europe*	167	238	256	228	237
North America	449	571	577	685	716
Central, South & Other Americas	28	41	59	47	52
Asia & Middle East	89	95	135	163	142
Africa	69	77	105	153	143
Australia, New Zealand & Oceania	50	68	75	94	73
Total International - Nights	46,302	51,503	54,266	62,236	63,498
EU - 27*	-	-	-	43,160	44,140
Of which: EU - 25	33,924	36,168	38,161	42,447	43,478
EU - 15	32,938	34,996	36,752	40,938	41,960
Other Europe*	1,681	2,092	2,563	1,777	2,310
North America	6,200	7,726	6,834	8,941	9,651
Central, South & Other Americas	488	654	867	728	915
Asia & Middle East	1,543	1,559	2,195	2,710	2,303
Africa	991	1,108	1,376	1,917	1,854
Australia, New Zealand & Oceania	1,475	2,196	2,270	3,003	2,326
					<i>Nights</i>
Average Length of Stay	8.5	8.3	7.8	7.9	7.9
EU - 27*	-	-	-	6.7	6.6
Of which: EU - 25	7.4	7.1	6.6	6.6	6.6
EU - 15	7.4	7.1	6.6	6.7	6.6
Other Europe*	10.1	8.8	10.0	7.8	9.7
North America	13.8	13.5	11.8	13.1	13.5
Central, South & Other Americas	17.4	16.0	14.7	15.5	17.6
Asia & Middle East	17.3	16.4	16.3	16.6	16.2
Africa	14.4	14.4	13.1	12.5	13.0
Australia, New Zealand & Oceania	29.5	32.3	30.3	31.9	31.9

Source: CSO Household Travel Survey

¹ Involving at least one overnight stay

* - See Background Notes for countries included in each group & changes from Jan 2007.

Table 3.2 International travel by Irish residents¹ - Number of trips, number of nights and average length of stay by reason for journey, 2004 - 2008

	'000				
	2004	2005	2006	2007	2008
Total international - trips	5,465	6,189	6,981	7,830	8,042
Holiday	3,472	3,931	4,612	5,448	5,557
Business	684	791	783	723	668
Visiting Friends/Relatives	985	1,118	1,317	1,356	1,455
Other	325	351	268	303	362
Total international - nights	46,302	51,503	54,266	62,236	63,498
Holiday	33,692	36,714	38,884	47,019	46,229
Business	3,430	3,870	4,282	3,669	4,133
Visiting Friends/Relatives	6,906	7,706	9,063	9,304	10,400
Other	2,274	3,211	2,037	2,244	2,736
	<i>Nights</i>				
Average Length of Stay	8.5	8.3	7.8	7.9	7.9
Holiday	9.7	9.3	8.4	8.6	8.3
Business	5.0	4.9	5.5	5.1	6.2
Visiting Friends/Relatives	7.0	6.9	6.9	6.9	7.1
Other	7.0	9.1	7.6	7.4	7.6

Source: CSO Household Travel Survey

¹ Involving at least one overnight stay

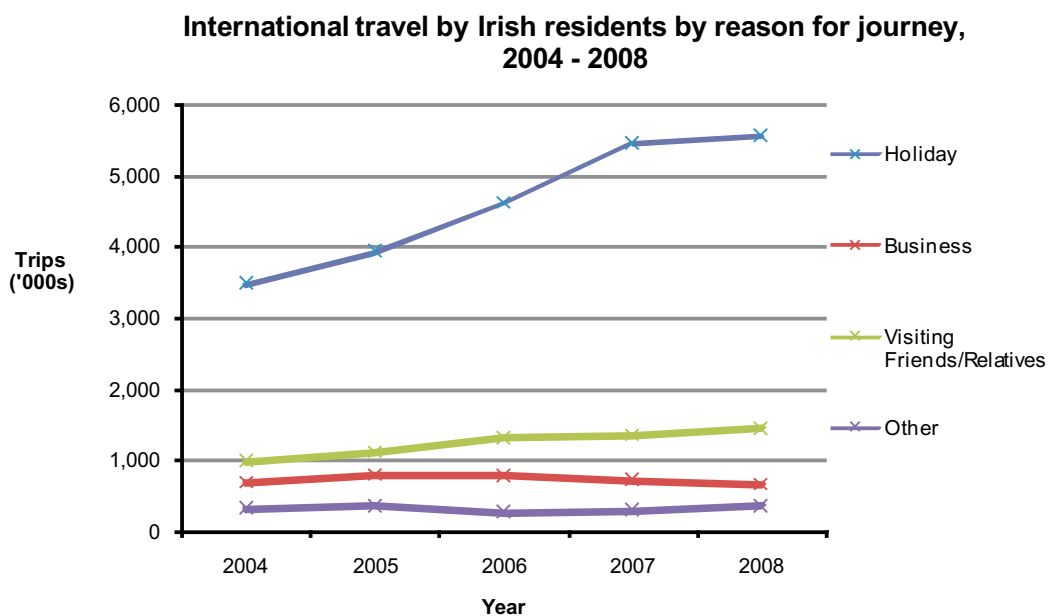


Table 3.3 International holiday trips by Irish residents by quarter¹, 2004 - 2008

'000

Year	Jan - Mar	Apr - Jun	Jul - Sep	Oct - Dec
2004	582	953	1,275	662
2005	716	1,074	1,419	722
2006	842	1,243	1,594	934
2007	1,026	1,486	1,809	1,127
2008	1,218	1,443	1,874	1,023

Source: CSO Household Travel Survey

¹ Involving at least one overnight stay



Table 3.4 International travel by Irish residents¹ - Number of trips, number of nights and average length of stay by age, 2004 - 2008

	2004	2005	2006	2007	2008
<i>'000</i>					
Total International - Trips	5,465	6,189	6,981	7,830	8,042
0-19 years	1,113	1,178	1,313	1,424	1,469
20-49 years	2,868	3,105	3,211	3,002	3,037
50+ years	1,484	1,910	2,456	3,404	3,535
Total International - Nights	46,302	51,503	54,266	62,236	63,498
0-19 years	10,916	11,476	11,878	12,265	12,776
20-49 years	22,411	23,876	22,822	24,031	23,270
50+ years	12,974	16,151	19,566	25,940	27,453
<i>Nights</i>					
Average Length of Stay	8.5	8.3	7.8	7.9	7.9
0-19 years	9.8	9.7	9.0	8.6	8.7
20-49 years	7.8	7.7	7.1	8.0	7.7
50+ years	8.7	8.5	8.0	7.6	7.8

Source: CSO Household Travel Survey

¹ Involving at least one overnight stay

International travel by Irish residents by age, 2004 - 2008

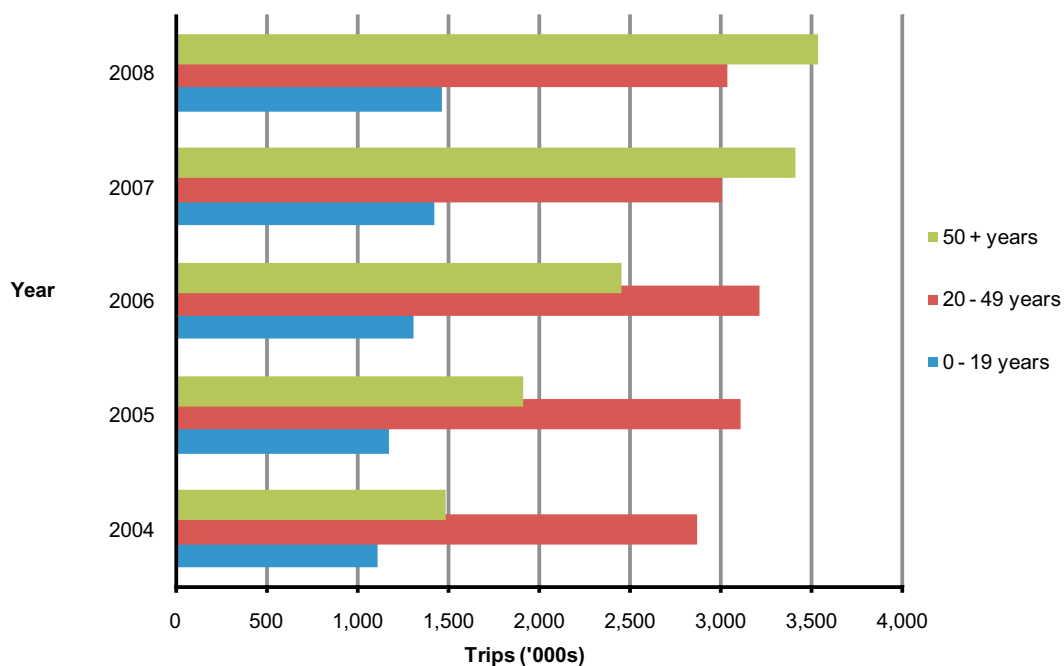


Table 3.5 International travel by Irish residents¹ - Number of trips, number of nights and average length of stay by gender, 2004 - 2008

	2004	2005	2006	2007	2008
	<i>'000</i>				
Total International - Trips	5,465	6,189	6,981	7,830	8,042
Male	2,675	3,079	3,432	3,886	3,890
Female	2,791	3,111	3,548	3,944	4,152
Total International - Nights	46,302	51,503	54,266	62,236	63,498
Male	21,678	24,475	26,159	30,355	30,451
Female	24,624	27,029	28,107	31,881	33,047
	<i>Nights</i>				
Average Length of Stay	8.5	8.3	7.8	7.9	7.9
Male	8.1	7.9	7.6	7.8	7.8
Female	8.8	8.7	7.9	8.1	8.0

Source: CSO Household Travel Survey

¹ Involving at least one overnight stay

International travel by Irish residents by gender, 2004 - 2008

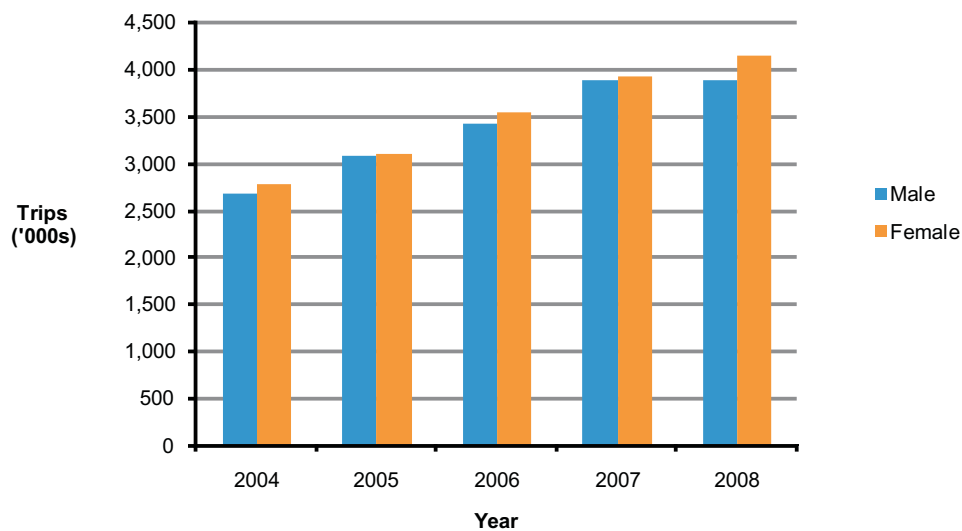


Table 3.6 International travel by Irish residents¹ - Number of trips, number of nights and average length of stay by region of residence, 2004 - 2008

	<i>'000</i>				
	2004	2005	2006	2007	2008
Total International - Trips	5,465	6,189	6,981	7,830	8,042
Border, Midland and Western	1,087	1,329	1,485	1,619	1,658
Southern and Eastern	4,378	4,860	5,496	6,211	6,384
Total International - Nights	46,302	51,503	54,266	62,236	63,498
Border, Midland and Western	9,617	11,474	11,360	12,650	12,898
Southern and Eastern	36,685	40,029	42,906	49,587	50,600
					<i>Nights</i>
Average Length of Stay	8.5	8.3	7.8	7.9	7.9
Border, Midland and Western	8.8	8.6	7.6	7.8	7.8
Southern and Eastern	8.4	8.2	7.8	8.0	7.9

Source: CSO Household Travel Survey

¹ Involving at least one overnight stay

Table 3.7 Main expenditure¹ categories by destination

	Percentage %						
	Package holiday	Shopping	Accommodation	Excursions /Tours	Food	Transportation	Other
EU-15	44.8	15.3	7.6	4.0	18.3	6.5	3.5
Other Europe	52.0	14.7	6.9	4.6	15.9	4.9	1.0
North America	40.0	21.6	9.4	5.7	12.2	7.5	3.6
Central & South America	64.2	7.6	8.2	3.9	7.9	6.2	2.0
Asia & Middle East	49.6	15.5	9.3	5.3	11.3	7.5	1.6
Africa	57.7	12.8	7.6	4.2	9.7	6.3	1.7
Australia, NZ & Oceania	40.3	12.7	11.2	6.9	12.7	9.9	6.3

Source: CSO Household Travel Survey

¹ Aggregated data from Q2 2006 to Q4 2007

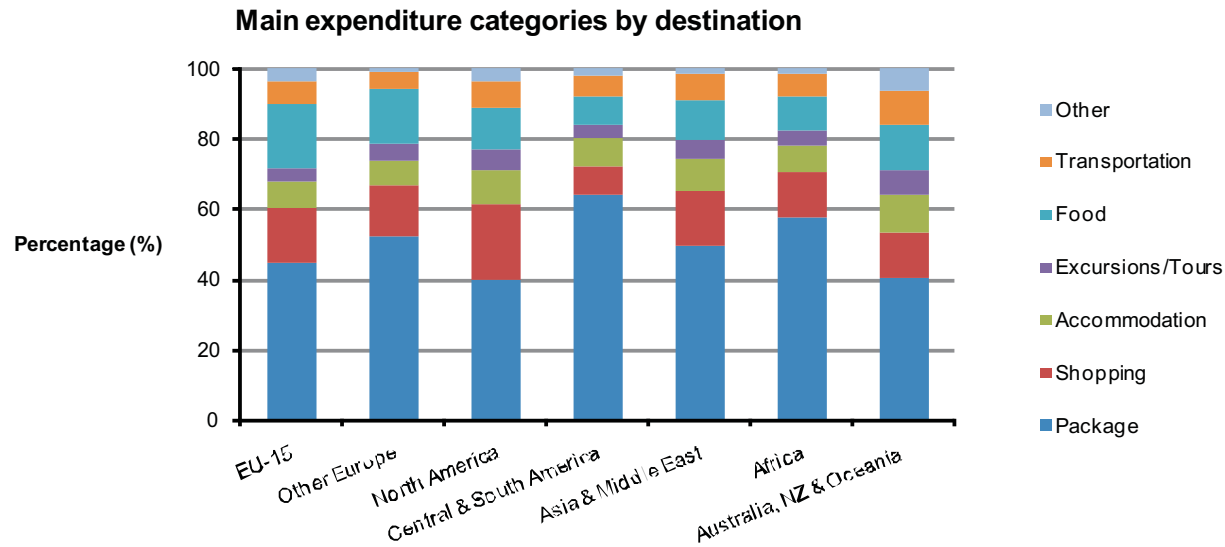


Table 3.8 International travel by Irish residents¹ - Top 10 overall destinations, number of trips, nights, average length of stay and expenditure, 2008

Country	Trips '000	Nights '000	Average Length of Stay Nights	Estimated Expenditure €million
Great Britain	1,964	8,092	4.1	834
Spain	1,679	15,027	8.9	1,409
France	865	6,815	7.9	683
United States	663	8,690	13.1	1,199
Italy	439	3,390	7.7	446
Portugal	397	3,620	9.1	356
Northern Ireland	367	927	2.5	62
Germany	214	1,138	5.3	132
Austria	108	910	8.4	139
Netherlands	98	488	5.0	56

Source: CSO Household Travel Survey

¹ Involving at least one overnight stay

Top 10 Overall International destinations visited by Irish residents, 2008

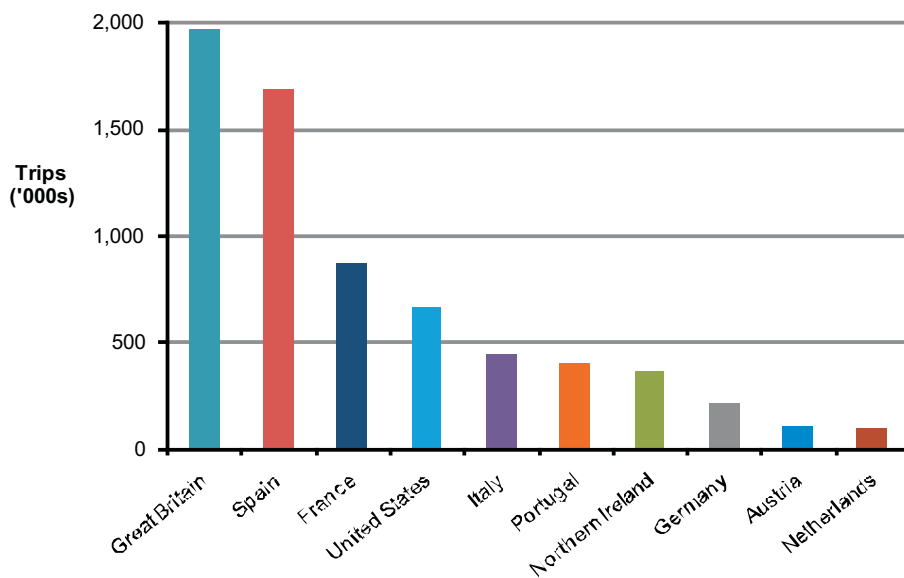


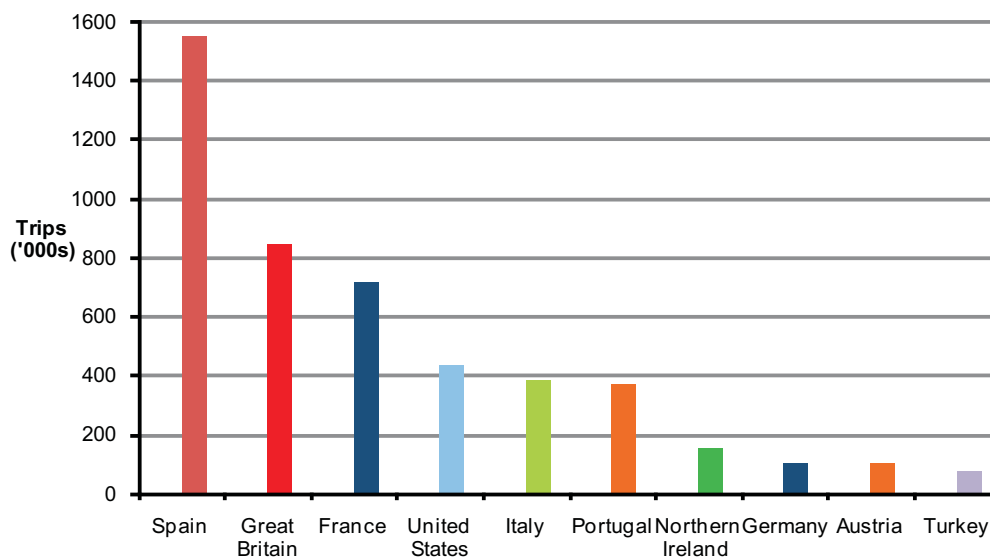
Table 3.9 International travel by Irish residents¹ - Top 10 holiday destinations, number of trips, nights and average length of stay and expenditure, 2008

Country	Trips '000	Nights '000	Average Length of Stay Nights	Estimated Expenditure €million
Total All Countries	5,557	46,229	8.3	5,283
Spain	1,551	13,971	9.0	1,324
Great Britain	848	3,091	3.6	397
France	720	5,941	8.3	585
United States	434	5,503	12.7	816
Italy	386	3,067	7.9	408
Portugal	371	3,421	9.2	339
Northern Ireland	156	383	2.5	30
Germany	102	498	4.9	67
Austria	100	767	7.7	126
Turkey	76	858	11.3	66

Source: CSO Household Travel Survey

¹ Involving at least one overnight stay

Top 10 International holiday destinations visited by Irish residents, 2008





Chapter 4

Transportation

Ireland's six main airports handled just over 31 million passengers in 2008.

A total of 2,855,257 passengers passed through Ireland's ferry ports in 2008.

London airports continue to be the main destinations for all international routes from Ireland.

Almost 90% of all flights entering Irish airports in 2008 originated from the UK and the remainder of the EU27.

Table 4.1 Overall passengers by airport, 2008

	Passenger Numbers		
	Domestic flights	International flights	Total
Dublin	940,199	22,567,006	23,507,205
Shannon	211,429	2,745,522	2,956,951
Cork	450,833	2,808,276	3,259,109
Knock	12,217	617,495	629,712
Kerry	126,159	299,956	426,115
Galway*	90,231	183,742	273,973

Source: CSO Transport data compiled under EC Regulation 437/2003

* CSO Airport Pairings

Table 4.2 Sea passengers to/from Ireland, 2008

	Irish trips overseas	Overseas visits to Ireland	Northern Ireland passengers	Total
Total	868,148	1,873,627	113,482	2,855,257
Continental	153,886	92,451	24,411	270,748
Cross channel	714,262	1,781,176	89,071	2,584,509

Source: CSO Tourism and Travel Survey

Table 4.3 Cork Airport - Top 10 international routes, 2008

	Passenger Numbers
London - Heathrow (LHR), Great Britain	516,165
London - Stansted (STN), Great Britain	296,453
Amsterdam (AMS), Netherlands	160,902
Birmingham - UK (BHX), Great Britain	121,893
London - Gatwick (LGW), Great Britain	114,675
Manchester (MAN), Great Britain	112,266
Paris - Charles De Gaulle (CDG), France	102,362
Malaga (AGP), Spain	101,731
Liverpool (LPL), Great Britain	86,526
Lanzarote (ACE), Spain	86,399

Source: CSO Airport Pairings

Table 4.4 Dublin Airport - Top 10 international routes, 2008

	<i>Passenger Numbers</i>
London - Heathrow (LHR), Great Britain	1,809,571
London - Gatwick (LGW), Great Britain	1,077,134
London - Stansted (STN), Great Britain	924,745
Manchester (MAN), Great Britain	687,390
Birmingham - UK (BHX), Great Britain	628,280
Paris - Charles De Gaulle (CDG), France	622,081
Amsterdam (AMS), Netherlands	490,927
Malaga (AGP), Spain	479,667
New York - JFK (JFK), USA	468,193
Edinburgh (EDI), Great Britain	450,035

Source: CSO Airport Pairings

Table 4.5 Knock Airport - Top 10 international routes, 2008

	<i>Passenger Numbers</i>
London - Stansted (STN), Great Britain	141,738
London - Luton (LTN), Great Britain	103,656
Manchester (MAN), Great Britain	78,580
Birmingham - UK (BHX), Great Britain	63,889
Derby - East Midlands (EMA), Great Britain	46,660
London - Gatwick (LGW), Great Britain	43,274
Bristol (BRS), Great Britain	40,039
Glasgow (GLA), Great Britain	14,444
Lanzarote (ACE), Spain	14,218
Liverpool (LPL), Great Britain	12,321

Source: CSO Airport Pairings

Table 4.6 Shannon Airport - Top 10 international routes, 2008

	<i>Passenger Numbers</i>
London - Stansted (STN), Great Britain	329,428
New York - JFK (JFK), USA	213,970
London - Gatwick (LGW), Great Britain	190,763
Boston (BOS), USA	124,915
Newark (EWR), USA	104,428
Paris - Beauvais (BVA), France	100,578
Bristol (BRS), Great Britain	84,940
Birmingham - UK (BHX), Great Britain	80,257
London - Luton (LTN), Great Britain	77,765
Liverpool (LPL), Great Britain	77,476

Source: CSO Airport Pairings

Table 4.7 Kerry Airport - Top 5 international routes, 2008

	<i>Passenger Numbers</i>
London - Stansted (STN), Great Britain	151,021
Frankfurt - Hahn (HHN), Germany	82,308
London - Luton (LTN), Great Britain	38,715
Manchester (MAN), Great Britain	16,674
Lourdes (LDE), France	3,864

Source: CSO Airport Pairings

Table 4.8 Galway Airport - Top 5 international routes, 2008

	<i>Passenger Numbers</i>
London - Luton (LTN), Great Britain	88,274
Manchester (MAN), Great Britain	44,800
Edinburgh (EDI), Great Britain	20,931
Amsterdam (AMS), Netherlands	9,937
Newcastle (NCL), Great Britain	7,566

Source: CSO Airport Pairings

Table 4.9 Waterford Airport - Top 5 international routes, 2008

	<i>Passenger Numbers</i>
London - Luton (LTN), Great Britain	74,853
Manchester (MAN), Great Britain	22,627
Birmingham - UK (BHX), Great Britain	21,444
Amsterdam (AMS), Netherlands	5,653
Malaga (AGP), Spain	4,867

Source: CSO Airport Pairings

Table 4.10 Overseas flights - Passenger numbers arriving in Irish airports by region of flight origin, 2008

	<i>Passenger Numbers</i>
EU 27	6,851,241
United Kingdom	6,060,338
North America	1,162,845
Europe other than EU 27	372,951
Asia	79,953
Africa	53,332
Total	14,580,660

Source: CSO Airport Pairings

Table 4.11 Overseas flights - Passenger numbers departing from Irish airports by region of flight destination, 2008

	<i>Passenger Numbers</i>
EU 27	6,865,451
United Kingdom	6,132,854
North America	1,160,531
Europe other than EU 27	373,232
Asia	74,662
Africa	53,241
Total	14,659,971

Source: CSO Airport Pairings

Table 4.12 Domestic travel by Irish residents¹ - Number of trips and number of nights by mode of transport used, 2004 - 2008

	<i>'000</i>				
	2004	2005	2006	2007	2008
Total Domestic - Trips	7,001	7,173	7,310	7,942	8,339
Air	140	134	144	153	148
Bus/Rail	702	734	706	860	872
Private Vehicle	6,011	6,165	6,223	6,701	7,048
Other	148	142	236	228	271
Total Domestic - Nights	24,189	24,607	24,203	26,328	26,195
Air	631	689	523	626	508
Bus/Rail	2,564	2,665	2,450	2,907	2,829
Private Vehicle	20,327	20,611	20,313	22,066	21,777
Other	667	641	918	730	1,080

Source: CSO Household Travel Survey

¹ Involving at least one overnight stay



Chapter 5

Accommodation

Price levels for accommodation services in Ireland fell in the second half of 2008 according to the Consumer Price Index. This contrasts with the three previous years where price levels actually increased after July.

Hotel/conference centre and staying with friends/relatives were the preferred means of accommodation for domestic travel by Irish residents in 2008. The use of hotel/conference centres and own holiday homes for domestic travel grew considerably over the 2004-2008 period and this to some extent would appear to be at the expense of the guesthouses/B&B sector which declined by nearly one third between 2004 and 2008.

Room occupancy in hotels for the whole year fell from 64% in 2007 to 58% in 2008. In the same period for April to October, room occupancy for guesthouses was down 7 percentage points to 56% while that of bed and breakfast premises fell by 6 percentage points to 42%.

There were almost 126,000 persons employed in the Irish accommodation and food services sector in 2008. This grew by 8% since 2004 and accounted for 6% of total employment in the Irish economy in 2008.

Table 5.1 Available accommodation in Ireland, 2004 - 2008

		<i>Numbers</i>				
		2004	2005	2006	2007	2008
Hotels	Premises	846	854	812	857	907
	Rooms	43,382	45,773	45,873	51,322	57,388
Guesthouses	Premises	461	448	409	387	360
	Rooms	5,226	5,115	4,632	4,429	4,221
Farmhouses/Town & Country Homes ¹	Premises	3,278	3,161	3,110	2,872	2,680
	Rooms	13,794	13,275	12,908	11,871	11,337
Self-catering	Premises	178	177	195	227	243
	Rooms	21,331	22,266	21,672	22,143 ³	25,382
Hostels ²	Premises	175	167	147	138	135
	Rooms	5,017	4,734	4,144 ³	3,961 ³	3,877

Source: Gulliver

¹ Includes specialist and pub accommodation

² Two hostel beds constitute one room

³ Revised

Table 5.2 Room occupancy in serviced accommodation, 2005 - 2008

		<i>Percentage %</i>			
Period		2005	2006	2007	2008
Hotels	Jan-Dec	62	64	64	58
Guesthouses	Apr-Oct	57	61	63	56
B&Bs	Apr-Oct	48	46	48	42

Source: Fáilte Ireland Occupancy Surveys

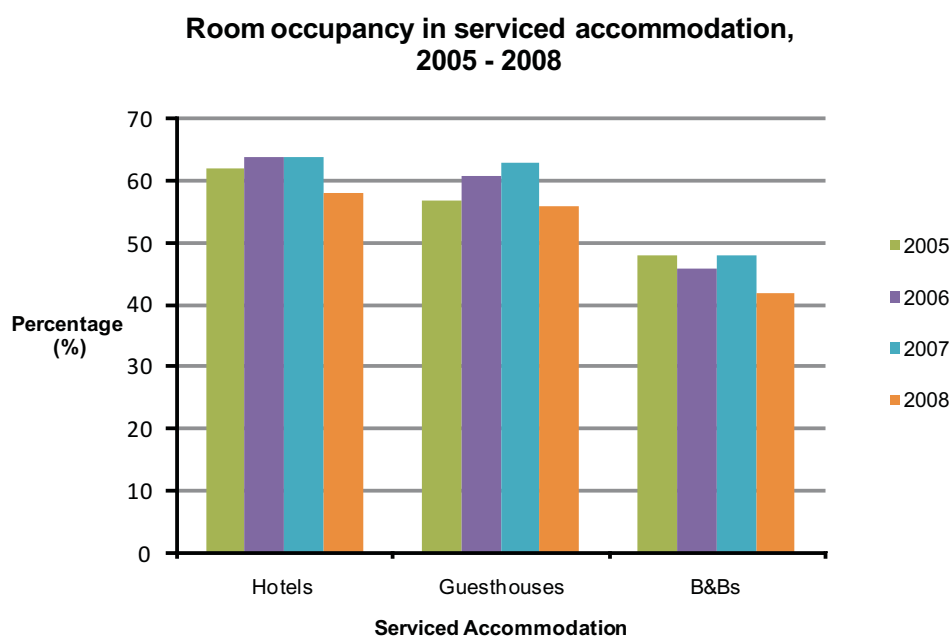


Table 5.3 Domestic travel by Irish residents¹ - Number of trips, nights & average length of stay by type of accommodation, 2004 - 2008

	<i>'000</i>				
	2004	2005	2006	2007	2008
Total Domestic - Trips	7,001	7,173	7,310	7,942	8,339
Caravan/Camping	277	298	279	305	323
Guest House/B&B	699	661	531	521	479
Own Holiday Home	294	365	419	489	521
Hotel/Conference Centre	2,355	2,597	2,847	3,201	3,430
Self Catering/Rented House	583	547	480	556	541
Friends/Relatives	2,512	2,430	2,529	2,653	2,818
Other	282	278	224	217	228
Total Domestic - Nights	24,189	24,607	24,203	26,328	26,195
Caravan/Camping	1,635	1,595	1,693	2,077	1,930
Guest House/B&B	1,963	1,816	1,542	1,432	1,178
Own Holiday Home	2,014	2,174	2,459	2,772	3,048
Hotel/Conference Centre	5,836	6,358	6,436	7,359	7,616
Self Catering/Rented House	3,701	3,582	3,298	3,500	3,238
Friends/Relatives	7,736	7,562	7,653	7,812	7,986
Other	1,303	1,520	1,122	1,376	1,198
					<i>Nights</i>
Average Length of Stay	3.5	3.4	3.3	3.3	3.1
Caravan/Camping	5.9	5.4	6.1	6.8	6.0
Guest House/B&B	2.8	2.7	2.9	2.7	2.5
Own Holiday Home	6.9	6.0	5.9	5.7	5.9
Hotel/Conference Centre	2.5	2.4	2.3	2.3	2.2
Self Catering/Rented House	6.3	6.5	6.9	6.3	6.0
Friends/Relatives	3.1	3.1	3.0	2.9	2.8
Other	4.6	5.5	5.0	6.3	5.3

Source: CSO Household Travel Survey

¹ Involving at least one overnight stay

Table 5.4 Consumer Price Index Accommodation services, 2005 - 2008

Accommodation services	<i>Index</i>			
	2005	2006	2007	2008
January	82	89	99	99
February	84	92	100	100
March	87	95	102	101
April	91	98	104	104
May	93	101	107	108
June	97	105	109	111
July	97	107	112	110
August	98	110	112	108
September	96	107	110	107
October	94	104	107	103
November	92	101	102	100
December	90	100	101	98

Source: CSO Consumer Price Index (Base Dec 2006=100)

**Accommodation Services Consumer Price Index
(Base Dec 2006=100)**

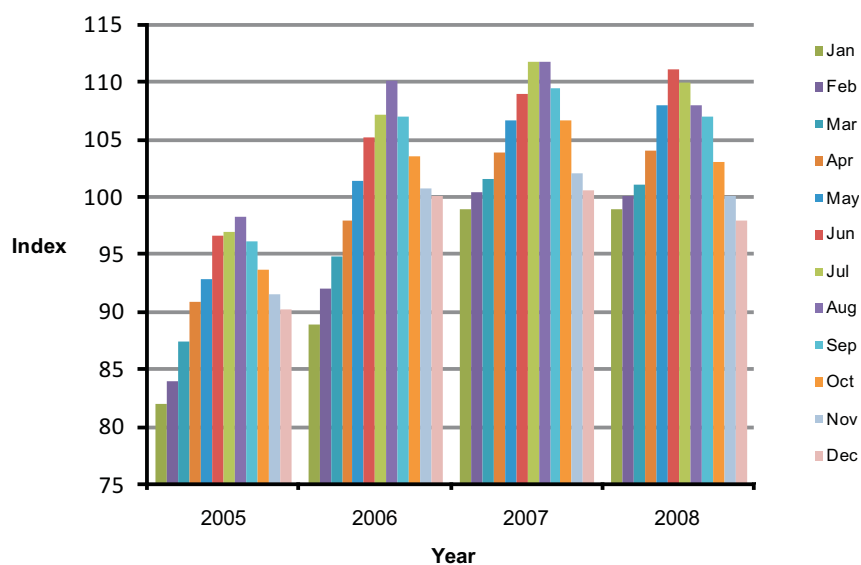


Table 5.5 International travel by Irish residents¹ - Number of trips, nights & average length of stay by type of accommodation, 2004-2008

	<i>'000</i>				
	2004	2005	2006	2007	2008
Total International - Trips	5,465	6,189	6,981	7,830	8,042
Caravan/Camping	206	208	187	215	246
Guest House/B&B	278	261	231	267	280
Own Holiday Home	98	175	282	313	318
Hotel/Conference Centre	2,311	2,800	3,179	3,670	3,680
Self Catering/Rented House	1,090	1,099	1,212	1,385	1,326
Friends/Relatives	1,245	1,401	1,636	1,721	1,923
Other	237	245	253	259	267
Total International - Nights	46,302	51,503	54,266	62,236	63,498
Caravan/Camping	2,776	2,609	2,349	2,647	2,833
Guest House/B&B	2,065	1,766	1,653	1,836	1,768
Own Holiday Home	1,392	2,369	3,578	4,031	4,035
Hotel/Conference Centre	14,351	16,965	18,289	22,623	21,634
Self Catering/Rented House	12,503	12,601	12,675	14,272	14,528
Friends/Relatives	10,206	11,617	12,716	13,509	14,996
Other	3,009	3,579	3,006	3,319	3,706
					<i>Nights</i>
Average Length of Stay	8.5	8.3	7.8	7.9	7.9
Caravan/Camping	13.5	12.5	12.6	12.3	11.5
Guest House/B&B	7.4	6.8	7.2	6.9	6.3
Own Holiday Home	14.2	13.5	12.7	12.9	12.7
Hotel/Conference Centre	6.2	6.1	5.8	6.2	5.9
Self Catering/Rented House	11.5	11.5	10.5	10.3	11.0
Friends/Relatives	8.2	8.3	7.8	7.8	7.8
Other	12.7	14.6	11.9	12.8	13.9

Source: CSO Household Travel Survey

¹ Involving at least one overnight stay

Table 5.6 Persons aged 15 and over in employment (ILO)¹ in Accommodation and Food Service Activities classified by sex and region, 2005 - 2008

'000

		2005		2006		2007		2008	
		Accommodation & Food Service Activities	Total Employment in all sectors	Accommodation & Food Service Activities	Total Employment in all sectors	Accommodation & Food Service Activities	Total Employment in all sectors	Accommodation & Food Service Activities	Total Employment in all sectors
Male	Border, Midland & Western	11.7	300.7	12.2	313.0	13.6	320.6	13.5	307.1
	Southern & Eastern	38.5	832.5	40.1	868.2	41.7	890.1	39.5	871.7
	Total Males	50.2	1,133.2	52.3	1,181.3	55.3	1,210.7	53.0	1,178.7
Female	Border, Midland & Western	19.3	202.2	19.1	211.6	22.6	226.9	21.4	231.2
	Southern & Eastern	47.2	627.4	50.2	655.4	55.1	685.1	51.6	689.8
	Total Females	66.4	829.5	69.4	867.0	77.7	912.0	72.9	921.0
Total	Border, Midland & Western	30.9	502.8	31.4	524.7	36.2	547.5	34.9	538.2
	Southern & Eastern	85.6	1,459.8	90.3	1,523.6	96.7	1,575.2	91.1	1,561.5
	Total Persons	116.6	1,962.7	121.6	2,048.3	133.0	2,122.8	125.9	2,099.7

Source: CSO Quarterly National Household Survey

¹ ILO : International Labour Office (See Background notes)



Chapter 6

Tourism and the Economy

Total earnings from visitors to Ireland was €4,781m in 2008 which was down 2.5% from 2007.

Expenditure on foreign travel by Irish residents increased by just under 11% to €7,583m in 2008 from 2007.

Foreign holiday expenditure increased by almost 73% to €4,975m between 2004 and 2008.

The Consumer Price Index for Tourism related expenditure in Ireland over the period 2000 to 2008 shows that the price of package holidays increased by 16.3%, prices for restaurants and licensed premises increased by 32.6% and those for cultural services increased by 36.3% .

Table 6.1 Visits to Ireland¹ - Expenditure by route of travel, 2004 - 2008

€million

	2004	2005	2006	2007	2008
Route of travel					
Air Cross-Channel	1,388	1,372	1,471	1,424	1,441
Sea Cross-Channel	487	493	453	465	396
Continental European	841	1,076	1,310	1,464	1,575
Transatlantic	488	513	559	568	421
All overseas routes	3,204	3,455	3,793	3,920	3,834
Cross-Border	228	235	237	256	262
Total expenditure (excluding international fares)					
	3,432	3,689	4,029	4,176	4,095
Passenger fare receipts of Irish carriers from visitors to Ireland	634	583	663	726	686
Total international tourism and travel earnings					
	4,065	4,272	4,692	4,902	4,781

Source: CSO Tourism and Travel Survey

¹ A visit involves at least one overnight stay

Expenditure of visitors to Ireland by route of travel, 2004 - 2008

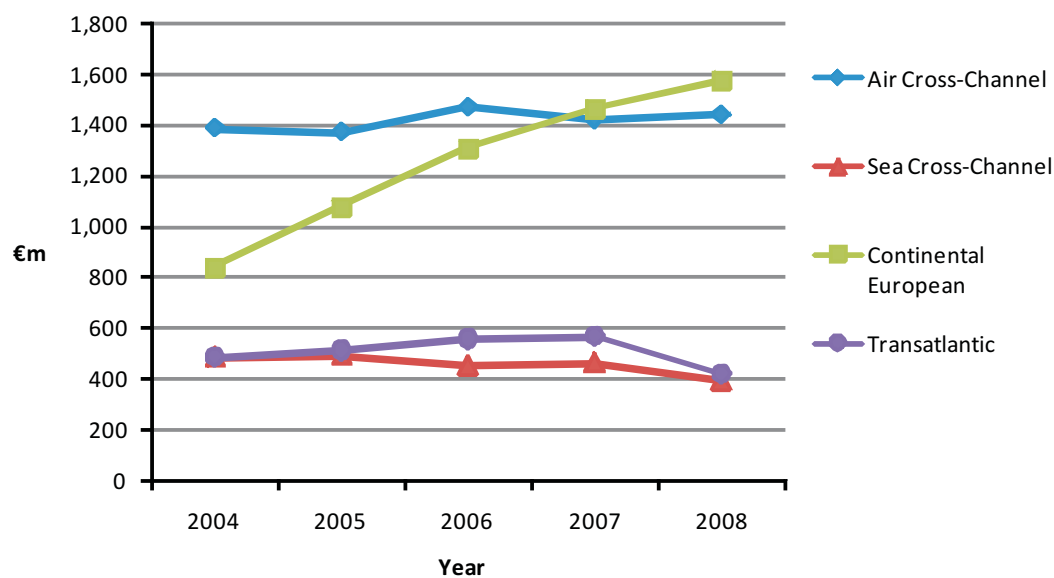


Table 6.2 Overseas visits to Ireland¹ - Total expenditure by area of residence and reason for journey, 2004 - 2008

	<i>€million</i>				
	2004	2005	2006	2007	2008
Total expenditure (excluding international fares)	3,204	3,455	3,793	3,920	3,834
Area of residence					
Great Britain	1,253	1,257	1,373	1,388	1,355
Other Europe	927	1,232	1,352	1,400	1,503
USA and Canada	769	731	803	806	660
Other Areas	255	234	265	326	315
Reason for journey					
Business	424	457	473	554	594
Holiday/leisure/recreation	1,774	1,822	2,029	2,108	1,939
Visit to friends/relatives	755	884	936	914	899
Other	251	292	353	344	402

Source: CSO Tourism and Travel Survey

¹ A visit involves at least one overnight stay

Expenditure of overseas visitors to Ireland by area of residence, 2004 - 2008

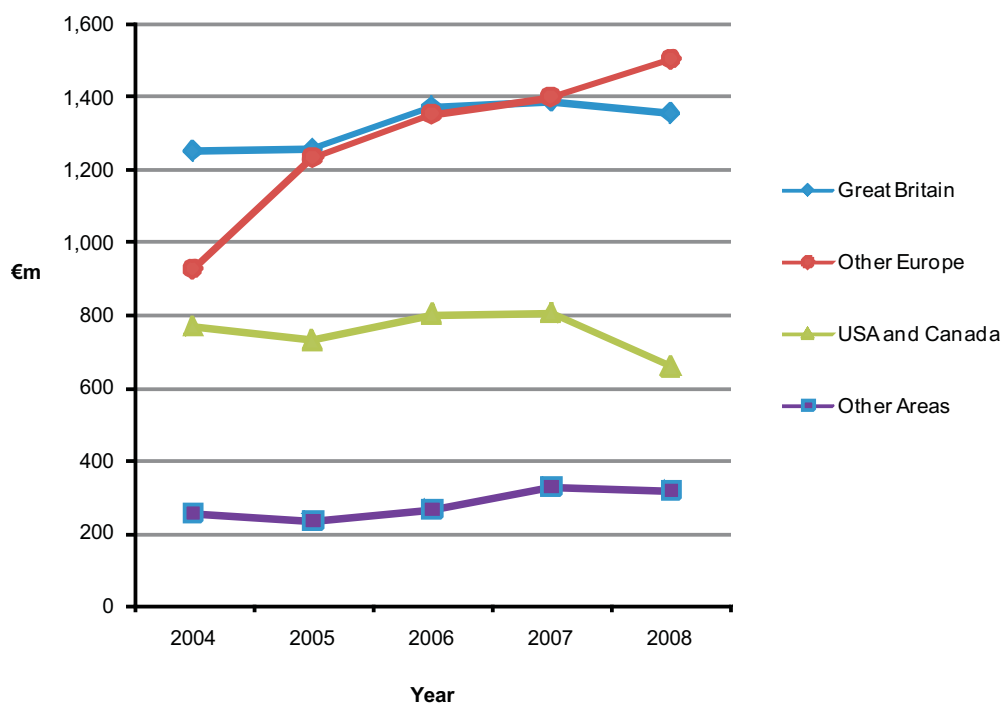


Table 6.3 Tourism and Travel - Earnings and expenditure, 2004 - 2008

<i>€million</i>			
Period	Earnings from all visits to Ireland ¹	Expenditure by all Irish visitors abroad ²	Balance ³
2004	4,065	4,179	-114
2005	4,272	4,773	-501
2006	4,692	5,318	-626
2007	4,902	6,163	-1,261
2008	4,781	6,912	-2,131

Source: CSO Tourism and Travel Survey

¹ Expenditure (excluding international fares) plus passenger fare receipts of Irish carriers from visitors to Ireland

² Expenditure (including international fares) less passenger fare payments by Irish visitors abroad to Irish carriers

³ + = Net inflow, - = Net outflow

Earnings and expenditure from Tourism and Travel, 2004 - 2008

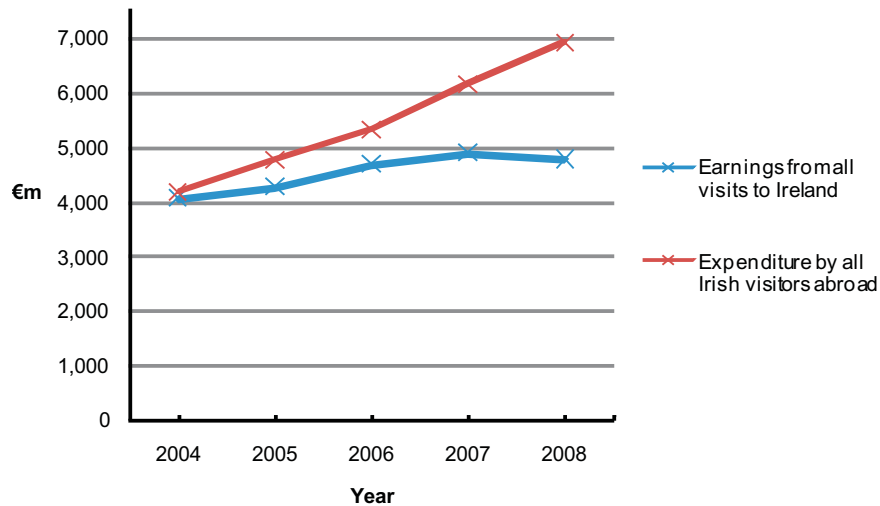


Table 6.4 Overseas visits by Irish residents¹ - Expenditure² classified by route of travel and reason for journey, 2004 - 2008

	<i>€million</i>				
	2004	2005	2006	2007	2008
Total Expenditure	4,661	5,270	5,918	6,842	7,583
Route of Travel					
Air Cross-Channel	1,419	1,610	1,638	1,897	2,183
Sea Cross-Channel	211	202	192	190	245
Continental European	2,480	2,846	3,402	3,969	4,229
Transatlantic	551	612	686	786	926
Reason for Journey					
Business	612	708	781	829	971
Holiday/leisure/recreation	2,882	3,220	3,557	4,388	4,975
Visit to friends/relatives	862	945	1,132	1,227	1,283
Other	304	397	448	398	355

Source: CSO Tourism and Travel Survey

¹ A visit involves at least one overnight stay

² Includes fare payments to Irish and non-Irish carriers

Table 6.5 Consumer Price Index for selected tourism related expenditures, 2000 - 2008

Index

	2000	2001	2002	2003	2004	2005	2006	2007	2008
Non alcoholic drinks	91.7	96.2	99.4	101.3	101.5	100.8	100.6	102.1	106.7
Alcoholic drinks	91.0	93.0	97.0	103.7	104.0	104.0	103.1	101.8	104.1
Beer - (off licence)	76.5	80.6	86.5	91.3	93.9	96.1	98.7	102.7	107.0
Tobacco	69.5	71.4	75.9	84.9	89.7	90.6	92.7	101.3	108.5
Fuel and lubricants	86.6	79.7	82.6	83.6	91.8	100.4	107.0	108.1	117.8
Postal services	75.7	75.7	79.0	86.1	93.7	93.8	99.0	108.7	111.4
Equipment for sports, camping and operation of sports equipment	102.6	104.3	109.2	109.0	105.8	102.2	100.6	98.8	98.5
Recreational and sporting services	69.2	74.0	79.4	87.2	91.6	96.1	99.5	106.3	110.0
Sports admittance	62.7	65.2	71.0	81.8	88.6	95.4	98.8	108.6	109.9
Cultural services	70.2	73.7	82.2	89.5	93.3	96.5	99.0	101.8	106.5
Books	84.2	88.2	91.3	93.4	96.0	97.3	98.3	99.8	103.4
Newspapers and periodicals	72.4	78.5	83.8	88.4	91.5	93.6	99.3	103.0	108.4
Package holidays	85.7	90.1	96.2	99.0	99.1	96.9	97.4	100.7	102.0
Restaurant and licenced premises	74.0	78.3	84.2	90.0	93.3	95.8	98.6	102.6	106.6
Restaurants, cafes and fast food	71.9	76.4	82.0	87.2	91.5	95.0	98.4	102.4	106.0
Accommodation services	71.1	75.1	78.0	81.0	85.6	91.7	100.7	105.2	104.1
Hairdressing salons and personal grooming	63.3	68.6	75.2	82.2	86.8	91.8	97.2	103.9	109.2

Source: CSO Consumer Price Index (Base Dec 2006 = 100)



Chapter 7

Activities and Attractions

Visiting National Parks, Houses and Castles together with Water sports and Hiking/Walking were the most popular activities undertaken by domestic holiday makers in 2008. The latter two activities, in particular, almost doubled in popularity between 2004 and 2008.

Hiking/Hillwalking was by far the most popular activity for visitors to Ireland in 2008 with the numbers engaging in this activity doubling to 517,000 between 2004 and 2008.

The Guinness Storehouse continues to lead the way in being the most popular fee charging visitor attraction with 1,038,910 visitors in 2008. The National Gallery of Ireland was the most popular free attraction with just over 740,000 visitors in 2008.

Visitors highlighted the Irish people and the scenery as the biggest advantages of Ireland as a holiday destination in 2008 while the cost of living and the weather were cited as the biggest disadvantages.

Table 7.1 Activities taken on domestic holidays, 2004 - 2008

Activities	Percentage %				
	2004	2005	2006	2007	2008
National Parks	16	21	21	28	26
Watersports	14	25	21	24	26
Houses/Castles	17	22	25	26	25
Hiking/Walking	14	19	17	21	25
Spa	-	-	-	20	24
Gardens	13	17	21	19	20
Heritage/Interpret. Centres	13	17	17	17	15
Museums/ Art Galleries/ Monuments	11	11	11	16	14
Golf	9	11	12	10	11
Angling	4	7	6	8	6
Cycling	4	6	4	6	6
Equestrian Pursuits	3	4	3	4	4

Source: Fáilte Ireland Survey of Travellers

Note: The amounts in each column may not total 100% due to persons citing more than one activity

Activities taken on domestic holidays, 2007 and 2008

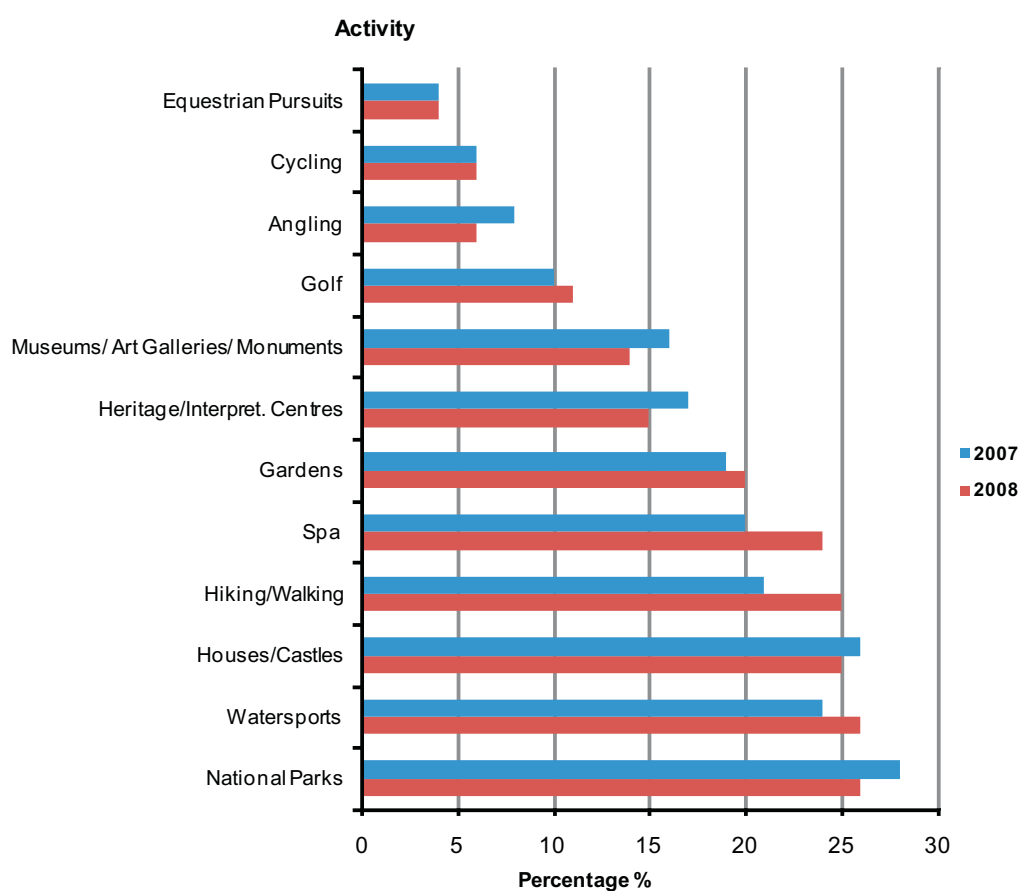


Table 7.2 Activities taken by overseas visitors to Ireland, 2004 - 2008

'000

Activities	2004	2005	2006	2007	2008
Hiking/Hillwalking	259	280	335	511	517
Angling	93	56	106	128	142
Golf	138	98	169	194	141
Cycling	85	43	78	102	120
Equestrian	31	27	37	50	50

Source: Fáilte Ireland Survey of Travellers

Activities taken by overseas visitors to Ireland, 2004 - 2008

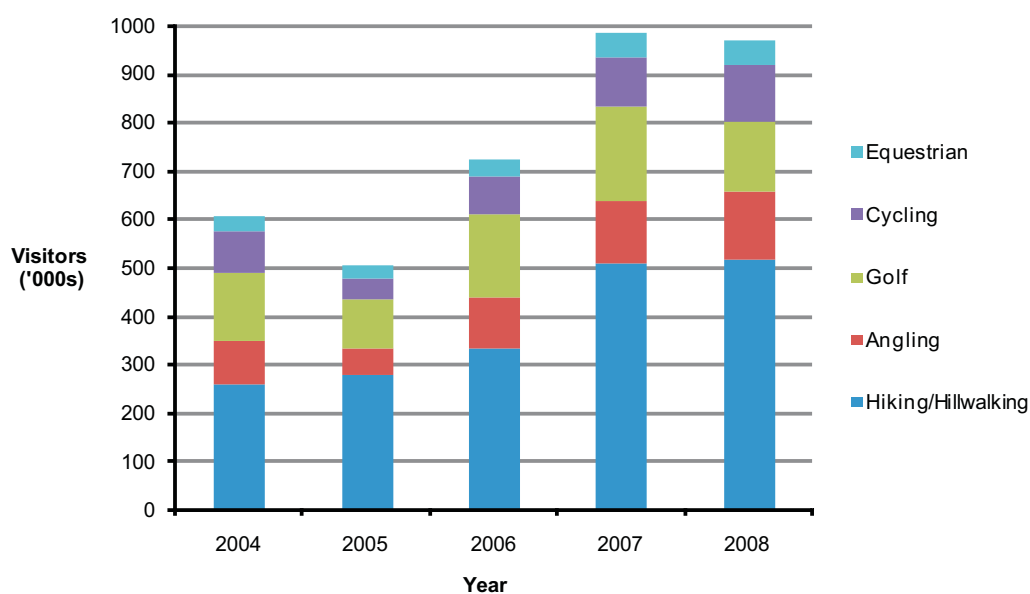


Table 7.3 Most popular fee-charging visitor attractions in the Republic of Ireland, 2004 - 2008

Number of visitors

Attractions	County	2004	2005	2006	2007	2008
Guinness Storehouse	Dublin	764,118	780,851	858,504	946,577	1,038,910
Dublin Zoo	Dublin	731,705	746,291	754,208	900,005	932,000
Cliffs of Moher Visitor Experience	Clare	789,465	760,906	911,876	940,455	808,310
Book of Kells	Dublin	512,849	529,898	548,691	567,632	541,364
Blarney Castle	Cork	364,468	385,543	395,454	401,567	360,000
St Patrick's Cathedral	Dublin	314,729	328,398	334,976	388,559	345,965
Fota Wildlife Park	Cork	294,089	294,842	299,119	362,792	331,062
Bunratty Castle & Folk Park	Clare	324,903	316,813	330,763	344,000	305,557
Kilmainham Gaol	Dublin	168,027	182,448	224,742	266,585	300,828
Waterford Crystal Visitor Centre	Waterford	322,000	315,000	310,000	312,000	290,000
Old Jameson Distillery	Dublin	196,000	204,000	220,000	210,094	250,000
Rock of Cashel	Tipperary	251,615	241,290	244,515	258,397	237,732
Brú Na Boinne Visitor Center	Meath	225,581	218,686	230,549	241,265	236,312
Christ Church Cathedral	Dublin	111,408	137,771	171,000	205,000	180,000
Kylemore Abbey & Gardens	Galway	185,034	177,843	193,415	187,000	180,000

Source: Fáilte Ireland Visitor Attractions

Most popular fee-charging visitor attractions, 2007 - 2008

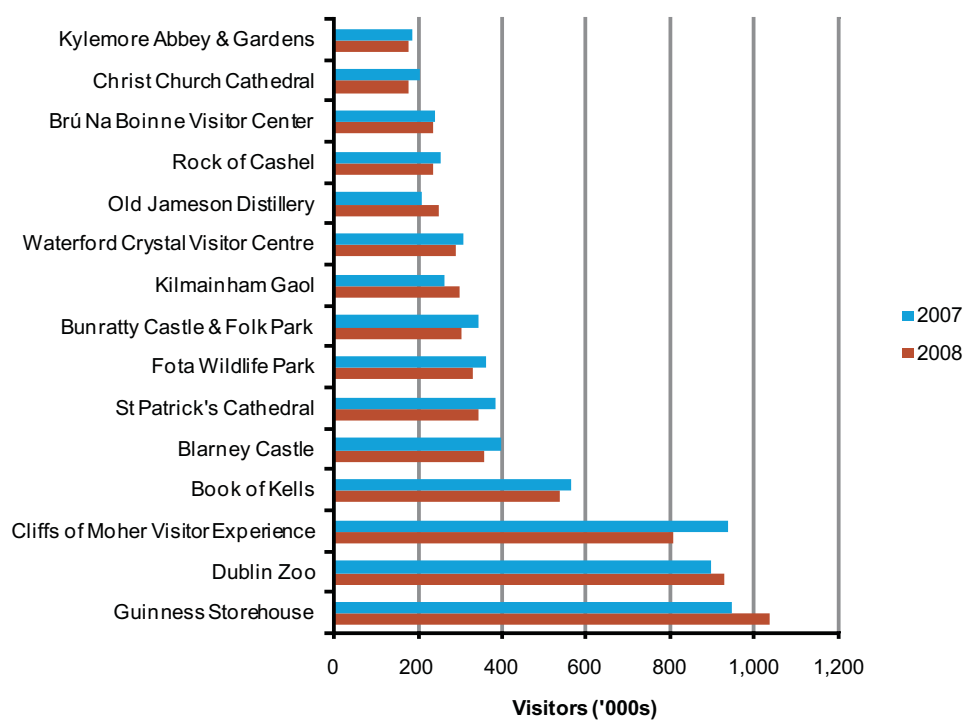


Table 7.4 Most popular free attractions in the Republic of Ireland, 2004 - 2008

Attractions	County	Number of visitors				
		2004	2005	2006	2007	2008
The National Gallery of Ireland	Dublin	744,847	748,938	756,510	740,407	742,332
Irish Museum of Modern Art	Dublin	350,000	420,000	435,000	485,000	440,000
National Museum of Ireland - Archaeology	Dublin	313,031	269,846	368,692	407,202	380,547
National Museum of Ireland - Decorative Arts and History	Dublin	102,932	125,006	245,291	374,347	300,418
Chester Beatty Library	Dublin	163,523	172,230	206,695	252,000	225,543
Dublin City Gallery The Hugh Lane	Dublin	-	-	142,168	166,346	203,207
Farmleigh	Dublin	98,152	180,487	277,005	176,959	196,449
The National Library of Ireland	Dublin	-	-	-	96,572	136,509
Nicholas Mosse Pottery	Kilkenny	-	-	80,000	110,000	120,000
National Museum of Ireland - Country Life	Mayo	99,761	105,501	100,645	113,430	112,195

Source: Fáilte Ireland Visitor Attractions

Most popular free attractions in the Republic Ireland for 2008

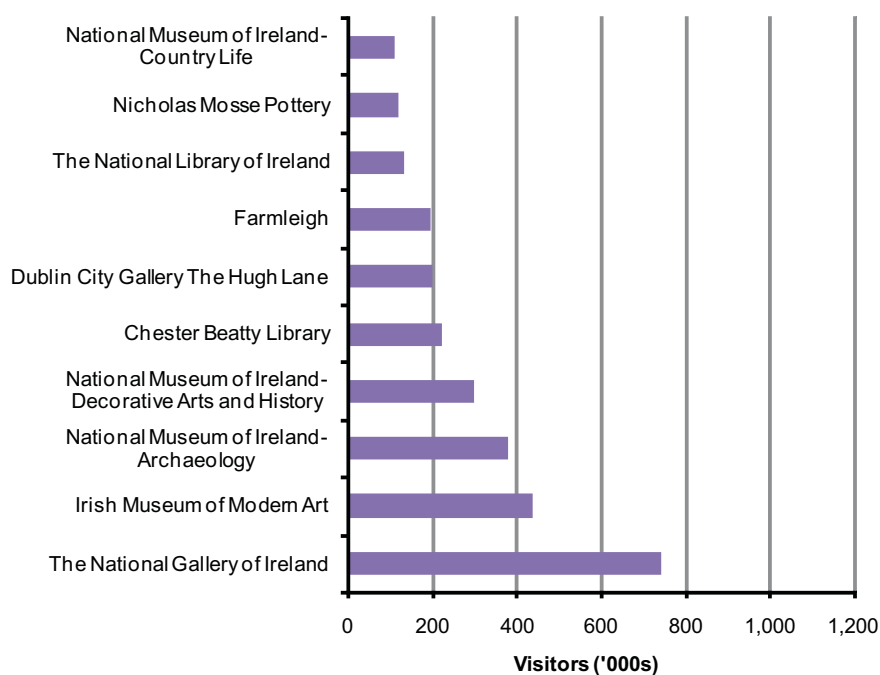


Table 7.5 Ireland's advantages - as cited by tourists, 2004 - 2008

Percentage %

	2004	2005	2006	2007	2008
The Irish people	40	39	39	38	39
The scenery	31	28	27	32	30
Culture/History	19	15	15	17	15
English speaking	16	14	15	11	12
Access/Easy to get to	9	10	10	6	8
Drinks/Pubs	7	9	4	9	5
Unspoilt environment	9	9	6	6	5
Restful/Relaxing	10	10	8	5	5
Quiet roads/Drive on same side	6	5	4	3	3
Good accommodation	5	4	4	3	2
Nature/Ecology	-	-	-	-	2

Source: Fáilte Ireland Survey of Travellers

Note: Respondents exclude Don't know/No opinion

Note: The amounts in each column may not total 100% due to persons citing more than one advantage

Ireland's most frequently mentioned advantages, 2008

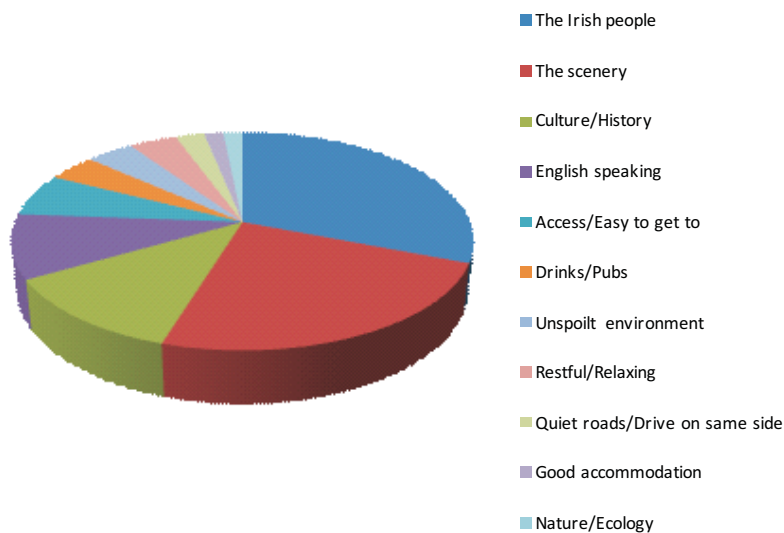


Table 7.6 Ireland's disadvantages - as cited by tourists, 2004 - 2008

	<i>Percentage %</i>				
	2004	2005	2006	2007	2008
High cost of living	19	21	21	18	22
Weather	17	14	15	19	20
Bad roads	19	17	17	17	11
Poor signposting	9	8	7	7	6
Poor internal transport	4	5	5	4	6
Food costs	7	7	5	2	6
Driving difficult	4	6	7	4	5
Difficulty of access	4	3	4	3	3
Food quality	3	3	3	2	3
Poor exchange rate	-	-	-	-	3
Litter/Hygiene	2	3	3	2	2

Source: Fáilte Ireland Survey of Travellers

Note: Respondents exclude Don't know/No opinion

Note: The amounts in each column may not total 100% due to persons citing more than one disadvantage



Chapter 8

International Comparisons

Tourism data available from Eurostat for 2008 showed that for foreign holidays, residents of the Netherlands, Cyprus, Belgium and Greece preferred longer trips (i.e. 15-28 nights) than other nationalities while residents of Finland and Croatia were more likely to take trips lasting up to 7 nights.

In regard to domestic holiday trips, residents of Greece, Portugal and France preferred longer trips (i.e. 15-28 nights) than all other nationalities.

The latest available tourism data for the EU27 show that for 2007, Cyprus and Malta have the highest tourism expenditure relative to GDP, while Romania, Finland and Germany reported the lowest.

Table 8.1 International comparison of outbound holidays by country and length of stay, 2008

Country	Trips		
	4 - 7 nights	8 - 14 nights	15 - 28 nights
Austria	3,247,783	1,501,830	483,886
Belgium	2,741,034	1,953,453	1,093,065
Bulgaria	267,560	106,523	47,856
Croatia	653,629	205,871	130,337
Cyprus	306,629	199,603	130,119
Czech Republic	2,775,201	1,809,961	277,626
Denmark*	-	-	-
Estonia*	172,338	99,028	-
Finland	1,462,000	500,000	159,000
France	7,002,251	5,252,720	2,634,004
Germany	27,419,492	22,398,004	7,487,648
Greece	584,419	261,559	193,221
Hungary	1,665,279	913,203	138,371
Ireland	2,765,000	1,327,000	371,000
Italy*	-	-	-
Latvia	353,617	175,105	38,888
Lithuania	480,769	314,389	42,346
Luxembourg	414,157	226,847	82,279
Netherlands	4,824,000	4,423,000	2,962,000
Norway*	-	-	-
Poland	1,655,000	1,747,000	486,000
Portugal	343,892	268,487	132,927
Slovakia	1,078,654	1,192,822	81,712
Slovenia	677,425	400,332	59,496
Spain	2,569,085	1,716,269	735,964
United Kingdom*	-	-	-

Source: Eurostat

* Figures not available at time of publication

Table 8.2 International comparison of domestic holidays by country and length of stay, 2008

Country	Trips		
	4 - 7 nights	8 - 14 nights	15 - 28 nights
Austria	2,601,517	478,900	125,204
Belgium	815,785	333,270	102,193
Bulgaria	1,232,410	694,124	64,008
Croatia	1,225,048	680,714	268,049
Cyprus	148,670	26,765	11,799
Czech Republic	3,667,075	826,720	383,710
Denmark*	-	-	-
Estonia*	76,206	-	-
Finland	3,839,000	576,000	123,000
France	44,998,727	25,687,528	13,117,593
Germany	32,713,591	10,054,547	2,196,443
Greece	3,600,911	1,487,265	1,076,984
Hungary	3,558,579	650,554	105,285
Ireland	989,000	174,000	48,000
Italy*	-	-	-
Latvia	238,170	67,876	15,895
Lithuania	343,396	151,108	33,867
Luxembourg*	1,882	883	-
Netherlands	4,631,000	1,296,000	512,000
Norway*	-	-	-
Poland	8,228,000	3,548,000	767,000
Portugal	1,369,844	726,439	422,415
Slovakia	1,746,127	351,065	163,597
Slovenia*	346,810	66,679	-
Spain	20,655,700	6,752,608	3,832,392
United Kingdom	21,902,068	3,996,766	637,267

Source: Eurostat

* Figures not available at time of publication

Table 8.3 International comparisons of number of persons employed by economic activity, 2008

'000

Countries	All economic activities	Hotels and restaurants sector	Tourist accommodation sector
Austria	4,090	251	94
Belgium*	4,446	142	-
Bulgaria*	3,361	-	-
Croatia*	1,636	89	-
Cyprus	383	26	12
Czech Republic	5,002	177	47
Denmark	2,854	82	18
Estonia*	657	25	-
Finland	2,531	89	17
France	26,004	873	241
Germany	38,880	1,471	383
Greece	4,560	315	75
Hungary	3,879	162	36
Iceland	177	7	2
Ireland*	2,101	129	-
Italy	23,405	1,180	247
Latvia*	1,125	31	-
Lithuania*	1,520	39	-
Luxembourg*	-	-	-
Malta	160	14	9
Netherlands	8,593	343	76
Norway	2,514	68	24
Poland*	15,800	-	-
Portugal	5,198	319	61
Romania	9,369	154	44
Slovakia	2,434	108	28
Slovenia*	996	-	-
Spain	20,258	1,453	329
Sweden*	4,593	-	-
Switzerland*	-	-	-
Turkey*	21,565	997	-
United Kingdom*	29,364	1,270	-

Source: Eurostat, EU Labour Force Survey

* Figures not available at time of publication

Table 8.4 International comparisons of Tourism receipts and expenditure, 1997, 2002 and 2007

	Receipts (EUR million)			International Tourism receipts relative to GDP	Expenditure (EUR million)			International Tourism expenditure relative to GDP
	1997	2002	2007	2007(%)	1997	2002	2007	2007(%)
EU 27 ¹	-	-	76,612	0.6	-	-	94,005	0.8
Euro area ²	-	-	100,437	1.1	-	-	88,860	1.0
Belgium	-	7,317	7,655	2.3	-	10,736	12,044	3.6
Bulgaria	963	1,207	2,287	7.9	339	563	1,331	4.6
Czech Republic	3,220	3,126	4,820	3.8	2,101	1,673	2,648	2.1
Denmark	2,809	5,047	4,495	2.0	3,712	6,193	6,210	2.7
Germany	15,782	20,350	26,289	1.1	42,619	55,504	60,467	2.5
Estonia	420	585	749	4.9	107	243	472	3.1
Ireland	2,290	3,256	4,470	2.4	1,960	3,942	6,318	3.4
Greece ³	4,904	10,285	11,357	5.0	1,169	2,549	2,383	1.0
Spain	23,739	33,557	42,170	4.0	3,985	7,687	14,360	1.4
France	24,724	34,190	39,643	2.1	14,632	20,580	26,430	1.4
Italy	26,355	28,193	31,038	2.0	14,764	17,801	19,673	1.3
Cyprus	1,461	2,048	1,961	12.5	340	537	1,070	6.8
Latvia	170	170	488	2.4	287	243	677	3.4
Lithuania	317	538	840	3.0	245	360	835	3.0
Luxembourg	-	2,542	2,919	8.1	-	2,042	2,593	7.2
Hungary	3,074	3,452	3,451	3.4	819	1,820	2,147	2.1
Malta	571	645	663	12.2	168	162	272	5.0
Netherlands	5,580	8,150	9,798	1.7	9,107	13,665	13,910	2.5
Austria	9,699	11,887	13,781	5.1	8,915	9,923	7,703	2.8
Poland	2,026	4,554	7,721	2.5	519	3,388	6,205	2.0
Portugal	4,063	6,094	7,393	4.5	1,818	2,247	2,858	1.8
Romania	465	354	1,068	0.9	602	419	1,114	0.9
Slovenia	1,044	1,145	1,618	4.8	461	636	803	2.4
Slovakia	481	769	1,493	2.7	387	470	1,206	2.2
Finland	1,684	1,664	2,060	1.1	1,939	2,118	2,907	1.6
Sweden	3,291	4,979	8,743	2.6	6,138	7,740	10,242	3.1
United Kingdom	19,941	21,620	28,175	1.4	25,196	44,045	53,059	2.6
Croatia ³	-	-	6,264	16.7	-	-	584	1.6
Turkey ³	6,174	8,967	13,422	2.8	1,513	1,988	2,185	0.5
Norway ³	1,896	2,296	2,866	1.0	3,955	5,358	9,197	3.2
Switzerland ³	-	-	8,477	2.7	-	-	7,873	2.5
Japan ³	3,823	3,711	6,745	0.2	29,101	28,171	21,407	0.7
United States	75,989	89,628	86,696	0.9	47,332	65,290	59,538	0.6

Source: Eurostat (bop_its_deth, bop_its_det and nama_gdp_c), Economic and Social Research Institute, Bureau of Economic Analysis

¹ Extra-EU-27.

² EA-13 instead of EA-15; extra-EA-13

³ 2006 instead of 2007.

Table 8.5 Number of hotels and similar establishments, bedrooms and bedplaces in the EU, 2006 - 2008

	Establishments			Bedrooms			Bed-Places		
	2006	2007	2008	2006	2007	2008	2006	2007	2008
Austria	14,051	14,204	13,756	282,002	285,558	286,571	572,514	573,726	579,758
Belgium	1,955	2,013	2,009	55,957	56,693	57,214	123,775	124,811	125,492
Bulgaria	1,348	1,526	1,646	95,632	103,841	107,990	211,565	231,303	239,706
Cyprus	753	735	708	44,404	43,799	42,898	89,490	87,804	85,681
Czech Republic	4,314	4,559	4,483	101,563	106,907	111,891	236,104	248,077	258,076
Denmark	473	477	470	36,049	37,098	37,560	70,769	73,384	73,491
Estonia	341	346	368	12,826	13,875	14,565	26,058	28,634	29,760
Finland	923	909	901	54,452	54,924	55,485	118,170	119,397	120,621
France	18,361	18,135	17,970	629,147	626,981	627,825	1,258,294	1,253,962	1,255,650
Germany	36,201	35,941	35,891	895,734	899,068	915,577	1,630,736	1,643,748	1,676,738
Greece	9,111	9,207	9,385	364,179	367,992	375,067	693,252	700,933	715,857
Hungary	2,032	1,999	2,001	66,873	65,638	65,815	158,762	154,088	154,521
Ireland	4,296	4,087	3,947	63,087	67,355	72,946	148,077	156,775	168,660
Italy*	33,768	34,058	-	1,034,682	1,058,910	-	2,086,942	2,142,786	-
Latvia	321	318	387	9,706	11,457	11,646	19,650	20,685	23,541
Lithuania	338	348	365	10,843	10,973	11,141	21,504	21,871	22,024
Luxembourg	277	273	267	7,414	7,639	7,591	14,239	14,559	14,445
Malta	173	160	155	18,533	17,792	17,765	39,518	39,985	38,876
Netherlands*	3,099	3,196	-	94,509	98,966	-	192,067	200,254	-
Poland	2,301	2,443	2,642	88,409	93,944	103,705	178,056	190,387	210,507
Portugal*	2,028	2,031	-	117,565	117,976	-	264,037	264,747	-
Romania	4,125	4,163	4,362	110,937	112,177	116,903	226,383	228,123	237,917
Slovakia	922	1,249	1,313	28,460	32,766	33,966	57,985	67,178	70,113
Slovenia	358	396	410	16,402	17,251	17,706	31,145	33,040	34,480
Spain	18,304	17,827	18,026	814,890	821,143	840,171	1,614,545	1,642,417	1,685,118
Sweden*	1,888	1,893	-	101,651	103,793	-	201,316	207,439	-
United Kingdom*	39,107	39,860	-	616,764	613,346	-	1,255,693	1,245,064	-

Source: Eurostat

* Figures not available at time of publication

Appendix

Background Notes

Data Sources

This report provides a compendium of data in the field of tourism and travel from a number of data providers. The various data sources used to provide the information in this publication are described below:

Central Statistics Office (CSO) Surveys:

(a) Household Travel Survey

The Household Travel Survey is a quarterly postal survey to households, which collects details on the domestic and international travel patterns and associated expenditure of Irish residents on trips involving at least one overnight stay.

(b) Country of Residence Survey

This is an ongoing interview based survey conducted at Irish airports and ferry ports. The survey collects information on the country of residence of travellers entering and departing the Republic of Ireland. The results are published on a monthly basis in the CSO Overseas Travel Release.

(c) Passenger Card Inquiry

The Passenger Card Inquiry is conducted on a continuous basis at Irish airports and ferry ports. It is a self completion survey and collects data on country of residence, reason for journey, average length of stay (nights), expenditure and fare costs. The results are published on a quarterly and annual basis as the CSO Tourism and Travel Release.

(d) Airport Pairings

This is a database containing details on passenger numbers for all direct overseas airline routes entering and departing the Republic of Ireland. The data is provided by the airports at Dublin, Cork, Shannon, Knock, Galway, Kerry, Sligo, Donegal and Waterford. This data is available from January 2006 and passenger numbers are published with a three month time lag.

Fáilte Ireland Surveys:

(a) Survey of Overseas Travellers

The objective of the Survey of Overseas Travellers is the collection and analysis of the trip and traveller characteristics of overseas visitors to the Republic of Ireland. Overseas tourists - spending at least one night in Ireland - are interviewed on departing the country at the major air and sea ports throughout the Republic.

(b) Visitor Attractions

Visitor attractions figures are compiled by Fáilte Ireland from data provided by local attractions in Ireland on their visitor numbers.

Eurostat Data Sources:

Eurostat is the Statistical Office of the European Communities. Data from Eurostat is downloaded from their website:

<http://epp.eurostat.ec.europa.eu/portal/page/portal/tourism/data/database>

CLASSIFICATIONS

NUTS regions

The regional classifications in this release are based on the NUT (Nomenclature of Territorial Units) classification used by Eurostat. The NUTS 3 regions correspond to the eight Regional Authorities established under the Local Government Act, 1991 (Regional Authorities) (Establishment) Order, 1993, which came into operation on 1 January 1994. The NUTS 2 regions, which were proposed by Government and agreed by Eurostat in 1999, are groupings of the NUTS 3 regions. The composition of the regions is set out below.

Border, Midland and Western NUTS2 Region		Southern and Eastern NUTS2 Region	
Border	Cavan Donegal Leitrim Louth Monaghan Sligo	Mid-East	Kildare Meath Wicklow
Midland	Laois Longford Offaly Westmeath	Mid-West	Clare Limerick City Limerick North Tipperary
West	Galway City Galway Mayo Roscommon	South-East	Carlow Kilkenny South Tipperary Waterford City Waterford Wexford
Dublin	Dublin City Dun Laoghaire-Rathdown Fingal South Dublin	South-West	Cork City Cork Kerry

Fáilte Ireland Regions

In 2005 changes were made to the Fáilte Ireland Regions. North Kerry up to this point had been included in the Shannon region. This was redefined in 2005 to be included in the South West region.

Dublin Region	Dublin	South East Region	Carlow Kilkenny
West	Galway Mayo Roscommon		Tipperary (South) Waterford Wicklow Offaly (West)
Shannon Region	Clare Limerick Tipperary		Westmeath Wexford

South West Region	Cork Kerry	North West	Cavan Donegal Leitrim
Midlands East	Kildare Laois Longford Louth Meath		Monaghan Sligo

DEFINITIONS

Tourism Tourism is defined as the activities of persons travelling to and staying in places outside their usual environment for not more than one consecutive year for leisure, business or other purposes. Stays in prison, military service and hospital or clinics etc. are excluded. Trips taken for the purposes of work, where clearly distinguishable from business trips, should also be excluded.

Trips The data presented in this report is in terms of the number of trips. A 'Trip' is defined in simple terms as a journey (usually including the return) from one place to another.

Visitor The definition of 'Visitor' used in this survey is based on that adopted by Eurostat, the European Statistical Office. They define a visitor as '*any person travelling to a place other than that of his/her usual environment for less than twelve months and whose main purpose is other than the exercise of an activity remunerated from within the place visited*'. However, as the Country of Residence Survey does not establish the reason for an individual's trip or length of stay, those travelling for reason of remuneration or for more than one year to this country cannot be excluded. Therefore, for the purposes of this survey, 'Trips' includes those travelling for remuneration in Ireland. Commercial Drivers travelling on sea routes are excluded in this report.

Outbound tourism This refers to trips taken abroad (including Northern Ireland) by Irish residents.

Inbound tourism This refers to trips taken to the Republic of Ireland by non Irish residents. Survey coverage in the Republic limits this to Overseas visitors only, thus excluding visitors from Northern Ireland to the Republic.

Domestic tourism This refers to trips taken by residents of the Republic of Ireland travelling to and staying in places within the Republic of Ireland but outside their usual environment. Survey coverage in the Republic limits this to overnight trips only.

Exclusions The following are excluded from Outbound tourism:

- Persons leaving the country as migrants, including dependants accompanying or joining them.
- Persons, known as border workers, residing near the border in the Republic of Ireland but working in Northern Ireland.
- Diplomats, consular officers and members of the armed forces when travelling outside of the Republic of Ireland on assignment. This includes dependants and household employees accompanying or joining them.
- Persons travelling as refugees or nomads.

The following are excluded from Domestic tourism:

- Residents travelling within the country with the intention of changing their usual residence.
- Persons who travel to work temporarily in institutions within the country.

- Persons who travel regularly or frequently between neighbouring localities to work or study.
- Nomads and persons without fixed residence.
- Armed forces on manoeuvre.

Overnight visitor

An overnight visitor is a person who stays at least one night in collective or private accommodation in the place, county or country visited. A visitor is defined as any person travelling to a place other than that of usual environment for less than 12 months and whose main purpose of trip is other than the exercise of an activity remunerated from within the place visited (i.e. work). Consequently the following are excluded:

- Short-distance local transport and commuting ie more or less regular trips between place of work/study and place of residence.
- Routine or regular visits eg visiting parents every weekend.
- For visits of more than 12 consecutive months, a traveller will be considered a resident of that place (from a statistical standpoint).
- Migratory movements for work purposes.

Tourism expenditure

Tourism expenditure is any expenditure made by a visitor, or on behalf of a visitor for their trip and stay at a destination. Tourism expenditure includes purchases of consumer goods and services inherent in travel and stay, purchases of small durable goods for personal use, souvenirs and gifts for family and friends.

The following outlays or acquisitions are excluded:

- Purchases for commercial purposes, for resale, purchases made on behalf of an employer during a business trip.
- Capital type investments or transactions engaged in by visitors, such as land, housing, real estate, works of art and other important acquisitions (such as cars, caravans, boats, second houses), even though they may be used in the future for tourism travel purposes.
- Cash given to relatives or friends during the trip, which does not represent payment of tourism goods or services, as well as donations made to institutions.

Other accommodation

Other accommodation includes:

- Health farms
- Stays on board ships, buses and trains
- Stays at moorings or marinas
- Other commercial accommodation
- Any other accommodation

ILO labour force classification

The primary classification used for the QNHS results is the ILO (International Labour Office) labour force classification. Labour Force Survey data on this basis have been published since 1988. The ILO classification distinguishes the following main subgroups of the population aged 15 or over:

In Employment:

Persons who worked in the week before the survey for one hour or more for payment or profit, including work on the family farm or business and all persons who had a job but were not at work because of illness, holidays etc. in the week.

Unemployed:

Persons who, in the week before the survey, were without work and available for work within the next two weeks, and had taken specific steps, in the preceding four weeks, to find work.

Inactive Population (not in labour force):

All other persons.

Please Note: The labour force comprises persons employed plus unemployed.

Country of Residence

Country of Residence is defined as the country in which a person has resided during the past year.

Rounding errors

Due to rounding issues the totals given may differ slightly from the sum of the individual component figures.

COUNTRY BREAKDOWNS**EU 27**

From Q1 2007 EU 27 includes the following countries:

Austria	Latvia
Belgium	Lithuania
Bulgaria	Luxembourg
Cyprus	Malta
Czech Republic	Netherlands
Denmark	Poland
Estonia	Portugal
Finland	Romania
France	Slovakia
Germany	Slovenia
Greece	Spain
Hungary	Sweden
Italy	United Kingdom

EU 25

For the period 2004-2006 EU 25 includes the following countries:

Austria	Latvia
Belgium	Lithuania
Cyprus	Luxembourg
Czech Republic	Malta
Denmark	Netherlands
Estonia	Poland
Finland	Portugal
France	Slovakia
Germany	Slovenia
Greece	Spain
Hungary	Sweden
Italy	United Kingdom

EU 15

EU 15 includes the following countries:

Austria	Italy
Belgium	Luxemburg
Denmark	Netherlands
Finland	Portugal
France	Spain
Germany	Sweden
Greece	United Kingdom

**Other Europe
2000-2003**

For the period 2000-2003 Other Europe includes the following countries:

Albania	Latvia
Andorra	Liechtenstein
Armenia	Lithuania
Azerbaijan	Macedonia, The Former Yugoslav Republic of
Belarus	Malta
Bosnia and Herzegovina	Moldova, Republic of
Bulgaria	Monaco
Croatia	Norway
Cyprus	Poland
Czech Republic	Romania
Estonia	Russian Federation
Faroe Islands	San Marino
Georgia	Slovakia
Gibraltar	Slovenia
Guernsey	Switzerland
Hungary	Turkey
Iceland	Ukraine
Isle of Man	Vatican City
Jersey	Yugoslavia (Federal Republic of)

**Other Europe
2004-2006**

For the period 2004-2006 Other Europe includes the following countries:

Albania	Jersey
Andorra	Liechtenstein
Armenia	Macedonia, The Former Yugoslav Republic of
Azerbaijan	Moldova, Republic of
Belarus	Monaco
Bosnia and Herzegovina	Norway
Bulgaria	Romania
Croatia	Russian Federation
Faroe Islands	San Marino
Georgia	Switzerland
Gibraltar	Turkey
Guernsey	Ukraine
Iceland	Vatican City
Isle of Man	Yugoslavia (Federal Republic of)

**Other Europe
2007 onwards**

From Q1 2007 Other Europe includes the following countries:

Aland Islands	Macedonia, The Former Yugoslav Republic of
Albania	Moldova, Republic of
Andorra	Monaco
Belarus	Montenegro
Bosnia and Herzegovina	Norway
Croatia	Russian Federation
Faroe Islands	San Marino
Gibraltar	Serbia
Guernsey	Switzerland
Iceland	Turkey
Isle of Man	Ukraine
Jersey	Vatican City
Liechtenstein	

North America

North America includes the following countries:

Canada
United States

**Central, South
and Other
Americas**

Central, South and Other Americas includes the following countries:

Anguilla	Guyana
Antigua and Barbuda	Haiti
Argentina	Honduras
Aruba	Jamaica
Bahamas	Martinique
Barbados	Mexico
Belize	Montserrat
Bermuda	Netherlands Antilles
Bolivia	Nicaragua
Brazil	Panama
Cayman Islands	Paraguay
Chile	Peru
Colombia	Puerto Rico
Costa Rica	Saint Kitts and Nevis
Cuba	Saint Lucia
Dominica	Saint Pierre and Miquelon
Dominican Republic	Saint Vincent and the Grenadines
Ecuador	Suriname
El Salvador	Trinidad and Tobago
Falkland Islands (Malvinas)	Turks and Caicos Islands
French Guiana	Uruguay
Greenland	Venezuela
Grenada	Virgin Islands, British
Guadeloupe	Virgin Islands, US
Guatemala	

**Asia and
Middle East**

From Q1 2007 Asia and Middle East includes the following Countries:

Afghanistan	Lebanon
Armenia	Macao
Azerbaijan	Malaysia
Bahrain	Maldives
Bangladesh	Mongolia
Bhutan	Myanmar
British Indian Ocean Territory	Nepal
Brunei Darussalam	Oman
Cambodia	Pakistan
China	Palestinian Territory, Occupied
Georgia	Philippines
Hong Kong	Qatar
India	Saudi Arabia
Indonesia	Singapore
Iran, Islamic Republic of	Sri Lanka
Iraq	Syrian Arab Republic
Israel	Taiwan, Province of China
Japan	Tajikistan
Jordan	Thailand
Kazakhstan	Timor Leste
Korea, Democratic People's Republic of	Turkmenistan
Korea, Republic of	United Arab Emirates
Kuwait	Uzbekistan
Kyrgyzstan	Vietnam
Lao People's Democratic Republic	Yemen

Africa Africa includes the following Countries:

Algeria	Malawi
Angola	Mali
Benin	Mauritania
Botswana	Mauritius
Burkina Faso	Mayotte
Burundi	Morocco
Cameroon	Mozambique
Cape Verde	Namibia
Central African Republic	Niger
Chad	Nigeria
Comoros	Reunion
Congo	Rwanda
Congo, The Democratic Republic of the	Saint Helena
Cote d'Ivoire	Sao Tome and Principe
Djibouti	Senegal
Egypt	Seychelles
Equatorial Guinea	Sierra Leone
Eritrea	Somalia
Ethiopia	South Africa
Gabon	Sudan
Gambia	Swaziland
Ghana	Tanzania, United Republic of
Guinea	Togo
Guinea-Bissau	Tunisia
Kenya	Uganda
Lesotho	Western Sahara
Liberia	Zambia
Libyan Arab Jamahiriya	Zimbabwe
Madagascar	

Australia, New Zealand and Oceania

Australia, New Zealand and Oceania includes the following Countries:

American Samoa	New Zealand
Antarctica	Niue
Australia	Norfolk Island
Bouvet Island	Northern Mariana Islands
Christmas Island	Palau
Cocos (Keeling) Islands	Papua New Guinea
Cook Islands	Pitcairn
Fiji	Samoa
French Polynesia	Solomon Islands
French Southern Territories	South Georgia and the South Sandwich Islands
Guam	Svalbard and Jan Mayen
Heard Island and McDonald Islands	Tokelau
Kiribati	Tonga
Marshall Islands	Tuvalu
Micronesia, Federated States of	United States Minor Outlying Islands
Nauru	Vanuatu
New Caledonia	Wallis and Futuna

