

Education

5

Introductory text	105
Table 5.1 Persons aged 15-64 classified by the highest level of education attained	109
Graph <i>Persons aged 15-64 with a third level qualification</i>	109
Table 5.2 Persons aged 25-64 in employment classified by the highest level of education attained	110
Table 5.3 Persons in full-time education by level	111
Graph <i>Persons in full-time education by level</i>	111
Table 5.4 Persons receiving full-time education and estimated participation rates for ages 15-24, 2004/05	112
Graph <i>Full-time education participation rate by sex for ages 15-24, 2004/05</i>	112
Table 5.5 Voted expenditure by sector for financial year ended 31 December 2004	113
Table 5.6 Pupils in first level schools classified by standard	113
Table 5.7 Teaching posts in first level schools on 30 June	114
Table 5.8 Pupils in first level schools (ordinary classes) by sex category of schools	114
Graph <i>Enrolments in second level schools – % change since 1999/00</i>	114
Table 5.9 Pupils and teachers in first level schools by class size, 2004/05	115
Table 5.10 Second level pupils classified by type of school	115
Table 5.11 Teachers in secondary, vocational and community schools	116

Table 5.12	Second level state examination candidates	116
Graph	<i>Pupil / Teacher ratio</i>	116
Table 5.13	Pupils in all second level schools by Leaving Certificate subject, 2005	117
Table 5.14	Leaving Certificate candidates taking selected subjects at ordinary level	118
Graph	<i>All Leaving Certificate students taking selected subjects, 2005</i>	118
Table 5.15	Leaving Certificate candidates taking selected subjects at higher level	119
Table 5.16	Leaving Certificate ordinary level grades for most popular subjects, 2005	120
Table 5.17	Leaving Certificate higher level grades for most popular subjects, 2005	120
Table 5.18	Educational institutions	121
Table 5.19	Ages of children in special schools for young offenders, 2005	121
Graph	<i>Grade distribution of selected Leaving Certificate higher level subjects, 2005</i>	121
Table 5.20	Pupils conveyed and cost of school transport service scheme	122
Table 5.21	First time entrants to third level courses in all institutions, 2004/05	122

5

Education

- In 2005, almost a quarter of those aged 15-64 had a third level qualification.
- Third level student numbers increased by 105% between 1990/91 and 2004/05.
- In 2005, 83% of first level school teachers were female.
- 60% of new entrants to HEA institutions were female in 2004/2005.
- At age 19, 61% of females and 45% of males were in full time education in 2004/05.
- Secondary school enrolments declined by 12% in the 6 year period from 1998/99 but Vocational, Comprehensive and Community schools maintained their numbers.

Introduction

The statistics in this chapter have been obtained from the Department of Education and Science. Results from the Quarterly National Household Survey (QNHS) modules on Educational Attainment are also included. The data include details of participation in and expenditure on first, second and third level education.

Educational Attainment

In 2005 almost a quarter of those aged 15-64 had a third level qualification. Excluding 15-24 year olds (the age group most likely to be still in education), just over 28% of the population aged 25-64 had a third level qualification. Over 61% of all persons aged 15-64 attained education levels of higher secondary level or above. Almost 16% of persons aged 15-64 had not progressed beyond primary level education.

Persons in education

The number of students in first level education totalled 455,782 in 2004/05. This was a slight increase over 2003/04 but represented only 79% of the 576,600 figure recorded in 1985/86. The numbers at this level have fallen substantially since then, but have risen in the last five years. In the case of second level students, the participation rate rose strongly from 1965/66 until 1995/96. Since then there has been a 9% drop in student numbers, resulting from a fall in the birth rate from the 1980s until 1996. Over the period 1965-2005, there was an increase of 594% in the third level student population. 275 extra places were taken up in 2004/05, as compared with 2002/03.

In 2004/05, participation rates for males and females differed substantially over the age group 15-22. Only a slightly greater proportion of females were in full-time education at age 15. At the age of 19, 61% of females and 45% of males were in full time education. This can be partially explained by a greater male participation in the labour force for the 15-19 age cohort, 28% versus 23% for females (see Table 2.5). The education participation rates came back into balance for ages 23 and 24.

Women formed 60% of new entrants to the HEA institutions (Universities and the Royal College of Surgeons in Ireland) in the year 2004/05, but formed only 46% of new entrants to the Institutes and Colleges of Technology.

Tables 5.1 and 5.2

Tables 5.1 and 5.2 give details of the highest level of education attained by people in Ireland and are taken from the QNHS ad hoc module on Educational Attainment last published in May 2006. Data refers to March-May 1999-2005.

Table 5.3

The information in this table refers to all Aided Institutions and those Non-Aided/Private Institutions who made student returns to the Department.

Table 5.11

Only teachers paid from funds provided by the Department of Education and Science are included in this table.

Part-time teaching staff includes job-sharers, eligible part-time teachers and other part-time teachers.

The data in respect of Vocational schools relate to day courses only.

Table 5.12

The information in this table refers to the number of second level pupils taking individual subjects in the Leaving Certificate programme.

Home Economics S & S (New Syllabus) has been introduced. Home Economics (S.S.) and Home Economics (General) are being phased out.

Table 5.14

The percentages in this table are the proportion of Leaving Certificate examination candidates (excluding Leaving Certificate Applied) who took a particular subject at ordinary level.

Table 5.15

The percentages in this table are the proportion of Leaving Certificate examination candidates (excluding Leaving Certificate Applied) who took a particular subject at higher level.

Table 5.19

Ages on June 30 are used for this table.

Table 5.1 Persons aged 15-64 classified by the highest level of education attained

Thousands

Highest education level attained	1999	2000	2001	2002	2003	2004	2005
Males							
Primary or below	280.8	278.7	282.7	274.7	253.3	246.7	242.4
Lower secondary	311.9	296.1	286.7	291.3	307.0	316.1	310.3
Higher secondary	310.4	301.1	315.5	324.2	335.2	356.1	371.6
Post leaving cert	109.7	146.4	141.7	142.8	133.4	121.1	132.0
Third level non-degree	73.4	76.7	91.8	93.0	104.9	111.5	111.0
Third level degree or above	140.3	148.2	155.1	172.7	195.8	206.7	214.7
Other	23.8	27.4	28.5	34.2	27.3	23.4	36.5
Total	1,250.3	1,274.6	1,302.1	1,333.0	1,357.0	1,381.6	1,418.5
Females							
Primary or below	250.8	245.8	250.8	241.6	218.3	211.4	203.4
Lower secondary	277.8	268.2	252.7	255.9	267.6	267.8	263.4
Higher secondary	346.1	335.6	348.9	356.1	375.3	384.6	394.9
Post leaving cert	123.6	149.2	142.6	138.9	140.5	132.0	134.3
Third level non-degree	89.8	103.7	119.5	126.4	132.8	142.4	150.6
Third level degree or above	126.8	134.8	148.7	173.8	187.3	208.2	222.6
Other	24.0	25.0	24.5	28.1	23.5	21.7	29.2
Total	1,238.9	1,262.3	1,287.7	1,320.8	1,345.3	1,368.1	1,398.3
All persons							
Primary or below	531.6	524.5	533.5	516.4	471.6	458.1	445.7
Lower secondary	589.7	564.3	539.4	547.2	574.7	583.9	573.7
Higher secondary	656.4	636.7	664.4	680.2	710.5	740.7	766.4
Post leaving cert	233.3	295.6	284.3	281.7	273.9	253.1	266.3
Third level non-degree	163.2	180.4	211.3	219.4	237.7	253.9	261.5
Third level degree or above	267.1	283.0	303.8	346.5	383.1	414.9	437.3
Other	47.8	52.3	53.1	62.3	50.8	45.1	65.7
TOTAL	2,489.1	2,536.8	2,589.8	2,653.8	2,702.3	2,749.7	2,816.7

Source: CSO

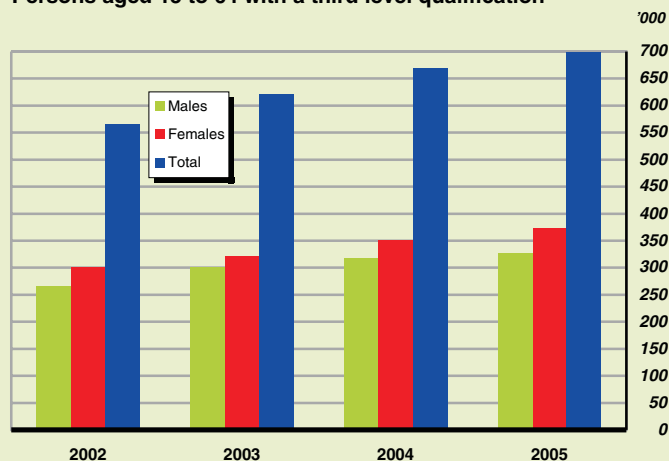
Persons aged 15 to 64 with a third level qualification

Table 5.2 Persons aged 25-64 in employment classified by the highest level of education attained

Thousands

Highest education level attained	1999	2000	2001	2002	2003	2004	2005
Males							
Primary or below	143.2	144.7	147.0	141.9	126.1	128.5	125.8
Lower secondary	166.6	163.8	161.0	164.1	174.6	178.4	178.4
Higher secondary	175.6	166.5	179.0	182.2	189.4	204.6	218.7
Post leaving cert	84.4	116.3	115.3	114.6	106.0	94.3	104.4
Third level non-degree	55.4	59.6	72.3	72.7	80.2	87.2	89.3
Third level degree or above	117.0	125.7	130.5	142.8	162.2	173.3	182.0
Other	16.3	17.7	20.6	24.3	17.6	15.8	25.5
Total	758.4	794.2	825.7	842.5	856.1	882.0	924.0
Females							
Primary or below	54.3	55.9	61.7	59.6	53.2	51.2	52.6
Lower secondary	78.4	77.8	76.6	80.9	83.9	81.1	84.0
Higher secondary	141.8	136.2	146.2	150.2	156.9	169.8	176.7
Post leaving cert	65.4	86.7	81.2	82.2	81.8	76.1	79.9
Third level non-degree	56.2	68.6	77.8	84.2	88.5	95.7	101.3
Third level degree or above	90.8	96.5	107.7	125.9	135.1	148.5	163.9
Other	12.6	13.0	12.1	14.5	10.5	10.8	13.6
Total	499.6	534.7	563.3	597.4	610.0	633.1	672.0
All persons							
Primary or below	197.4	200.6	208.7	201.5	179.4	179.6	178.4
Lower secondary	245.1	241.6	237.7	244.9	258.6	259.5	262.4
Higher secondary	317.4	302.7	325.2	332.4	346.3	374.3	395.4
Post leaving cert	149.7	203.0	196.5	196.7	187.8	170.4	184.3
Third level non-degree	111.7	128.2	150.1	156.9	168.7	182.9	190.6
Third level degree or above	207.8	222.2	238.2	268.7	297.3	321.8	345.8
Other	28.9	30.7	32.7	38.8	28.1	26.6	39.1
TOTAL	1,258.0	1,328.9	1,389.0	1,439.9	1,466.2	1,515.1	1,596.0

Source: CSO

Table 5.3 Persons in full-time education by level

School year	Number		
	First level	Second level	Third level
1965/66	504,865	142,983	20,698
1970/71	520,129	197,142	24,496
1975/76	550,078	270,956	33,148
1980/81	568,364	300,601	41,928
1985/86	576,576	338,207	55,088
1990/91	552,528	345,941	69,988
1995/96	485,923	373,665	102,662
2000/01	444,782	349,274	126,300
2001/02	447,446	344,720	131,812
2002/03	448,754	343,596	137,323
2003/04	451,755	341,724	143,271
2004/05	455,782	339,128	143,546

Source: Department of Education and Science

TABLE 5.3

Persons in full-time education by level

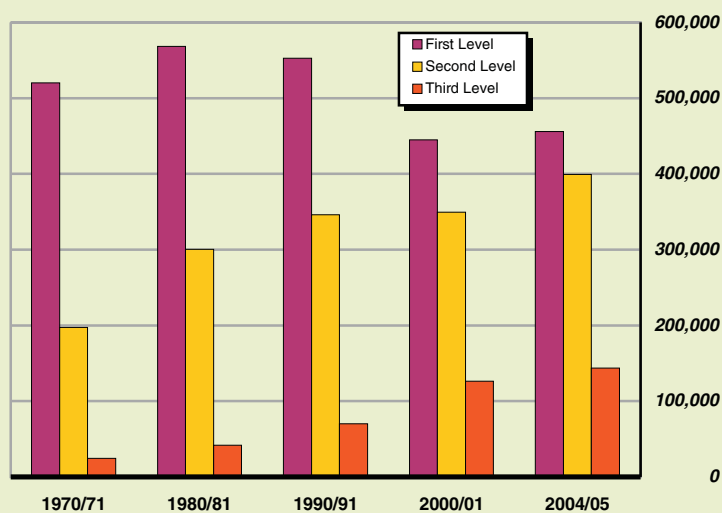


Table 5.4 Persons receiving full-time education and estimated participation rates for ages 15-24, 2004/05

Age	In full-time education			As % of population	
	Male	Female	Total	Male	Female
15	28,364	27,805	56,169	96.9	99.3
16	27,055	28,037	55,092	91.8	99.3
17	24,200	27,040	51,240	79.2	91.8
18	17,579	22,471	40,050	56.2	76.3
19	13,766	18,305	32,071	44.6	61.3
20	12,641	16,612	29,253	39.1	53.7
21	10,573	13,098	23,671	32.8	40.7
22	7,484	7,995	15,479	21.6	23.1
23	4,552	4,578	9,130	12.9	12.9
24	3,124	3,175	6,299	8.4	8.7

Source: Department of Education and Science

Full-time education participation rate by sex for ages 15-24, 2004/05

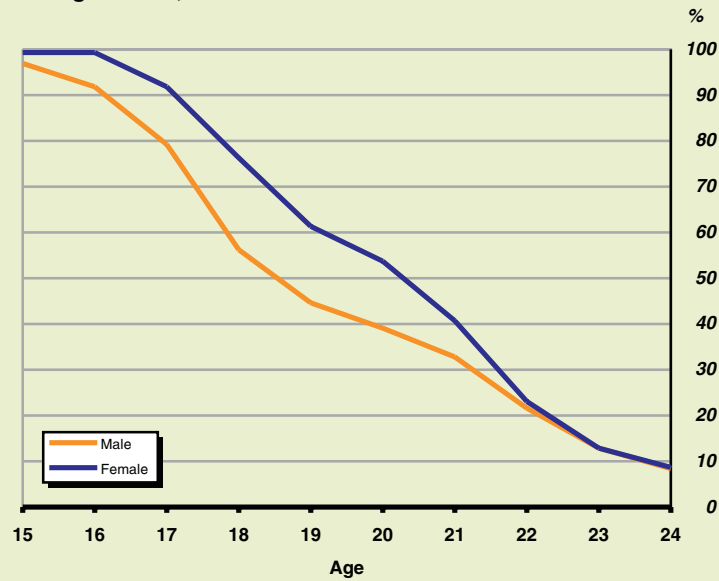


Table 5.5 Voted expenditure by sector for financial year ended 31 December 2004

<i>€m</i>			
Sector	Current	Capital	Total
First level education	2,070,180	172,719	2,242,899
Second level education	2,199,683	163,720	2,363,403
Third level education	1,381,330	96,643	1,477,973
Office of the Minister for Education	492,405	20,616	513,021
Gross expenditure	6,143,598	453,698	6,597,296
Appropriations In Aid	287,639		287,639
Net expenditure	5,855,959	453,698	6,309,657

Source: Department of Education and Science

TABLE 5.5

TABLE 5.6

Table 5.6 Pupils in first level schools classified by standard

<i>Number</i>							
Standard	1998/99	1999/2000	2000/01	2001/02	2002/03	2003/04	2004/05
Infants standard	104,123	103,133	103,832	107,500	111,355	113,150	113,810
First standard	53,892	51,659	50,818	51,138	52,166	54,770	56,158
Second standard	54,493	53,851	51,766	50,927	51,243	52,211	54,899
Third standard	53,926	54,505	54,033	51,960	51,226	51,567	52,461
Fourth standard	53,890	53,828	54,606	54,079	52,068	51,323	51,858
Fifth standard	57,292	54,048	54,063	54,916	54,476	52,405	51,733
Sixth standard	58,346	56,647	53,595	53,760	54,616	54,225	52,396
Other standard	773	668	631	427	379	320	215
Special schools	7,386	7,228	7,124	6,982	6,807	6,718	6,621
Pupils with special needs in ordinary first level schools	8,412	8,743	9,092	9,376	9,384	9,340	9,357
Private Primary Schools	5,312	6,842	5,222	6,381	5,034	5,726	6,274
Total pupils	457,845	451,152	444,782	447,446	448,754	451,755	455,782

Source: Department of Education and Science

Table 5.7 Teaching posts in first level schools on 30 June

	<i>Number</i>								
Sex	1997	1998	1999	2000	2001	2002	2003	2004	2005
Male	4,568	4,522	4,498	4,370	4,503	4,536	4,490	4,578	4,493
Female	16,467	16,578	17,002	17,480	18,347	19,399	20,210	21,461	21,789
Total	21,035	21,100	21,500	21,850	22,850	23,935	24,700	26,039	26,282

Source: Department of Education and Science

TABLE 5.7

Table 5.8 Pupils in first level schools (ordinary classes) by sex category of schools

	<i>Number</i>						
Sex category of school	1998/99	1999/2000	2000/01	2001/02	2002/03	2003/04	2004/05
Single sex	100,248	97,953	95,379	93,360	92,208	90,487	88,890
Junior schools	3,889	3,993	3,920	3,970	4,005	3,981	3,975
Senior schools	25,609	24,116	22,550	21,856	21,402	20,638	20,354
All-through schools	70,750	69,844	68,909	67,534	66,801	65,868	64,561
Single sex with mixed junior standards	38,039	34,688	32,123	31,738	31,310	30,230	29,252
Mixed	298,448	295,698	295,842	299,609	304,011	309,254	315,388
Junior schools	23,957	22,893	21,849	22,066	22,389	22,714	22,578
Senior schools	18,734	18,006	17,469	16,922	16,714	16,222	16,318
All-through schools	255,757	254,799	256,524	260,621	264,908	270,318	276,492
TOTAL	436,735	428,339	423,344	424,707	427,529	429,971	433,530

Source: Department of Education and Science

TABLE 5.8

Enrolments in second level schools - % change since 1999/00

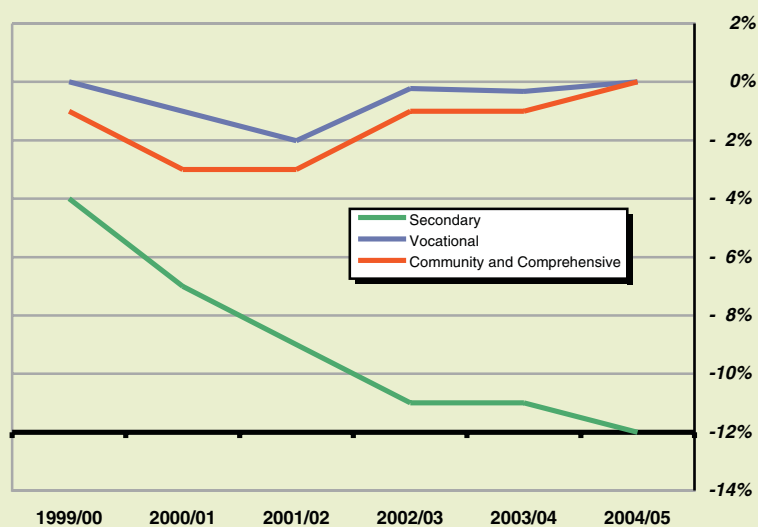


Table 5.9 Pupils and teachers in first level schools by class size, 2004/05

Teaching teachers in school	Number of schools	Class size				Total
		0-19	20-29	30-39	40 and over	
		Number				
1	17	128	21	–	–	149
2	669	13,355	6,853	408	–	20,616
3	595	11,438	23,330	2,520	–	37,288
4	492	7,224	31,981	6,754	41	46,000
5	259	3,971	20,555	6,965	0	31,491
6	181	3,097	17,208	6,551	40	26,896
7	150	2,776	15,158	8,394	41	26,369
8	181	2,432	23,617	11,652	40	37,741
9	106	2,922	13,517	7,520	–	23,959
10 and over	507	18,244	107,146	57,631	–	183,021
Total	3,157	65,587	259,386	108,395	162	433,530

Source: Department of Education and Science

Table 5.10 Second level pupils classified by type of school

Category	Number							
	1997/98	1998/99	1999/2000	2000/01	2001/02	2002/03	2003/04	2004/05
Secondary	217,303	211,369	203,418	197,376	192,436	189,093	187,563	185,026
Vocational	97,309	97,998	98,451	96,842	96,467	98,233	98,134	97,693
Community and Comprehensive	53,548	52,684	51,991	51,166	51,175	51,905	52,154	52,443
Total	368,160	362,051	353,860	345,384	340,078	339,231	337,851	335,162

Source: Department of Education and Science

TABLES. 9

TABLE 5.10

Table 5.11 Teachers in secondary, vocational and community schools

Category	Number						
	1998/99	1999/2000	2000/01	2001/02	2002/03	2003/04	2004/05
Secondary							
Full-time	12,180	12,418	12,476	12,424	12,447	11,835	11,553
Full-time equivalent of part-time	1,043	1,175	1,361	1,582	1,680	1,326	1,653
Vocational							
Full-time	5,497	5,625	5,788	5,685	5,933	5,977	5,994
Full-time equivalent of part-time	1,105	1,156	1,381	1,607	1,417	1,581	1,682
Community and Comprehensive							
Full-time	3,129	3,058	3,171	3,410	3,682	3,602	3,487
Full-time equivalent of part-time	481	534	434	479	533	490	621
Total							
Full-time	20,806	21,101	21,435	21,519	22,062	21,414	21,034
Full-time equivalent of part-time	2,629	2,865	3,176	3,668	3,630	3,397	3,956

Source: Department of Education and Science

Table 5.12 Second level state examination candidates

Examination	Number								
	1997	1998	1999	2000	2001	2002	2003	2004	2005
Junior Certificate	67,053	65,608	62,659	61,470	60,124	60,152	59,340	56,864	56,640
Male	33,740	33,137	31,773	31,302	30,308	30,150	29,855	28,495	28,627
Female	33,313	32,471	30,886	30,168	29,816	30,002	29,485	28,369	28,013
Leaving Certificate	63,234	65,922	64,936	63,419	59,537	58,400	59,536	58,742	57,391
Male	29,995	31,333	30,811	30,138	28,176	27,716	28,532	28,059	27,189
Female	33,239	34,589	34,125	33,281	31,361	30,684	31,004	30,683	30,202
ALL EXAMINATION CANDIDATES	130,287	131,530	127,595	124,889	119,661	118,552	118,876	115,606	114,031
Male	63,735	64,470	62,584	61,440	58,484	57,866	58,387	56,554	55,816
Female	66,552	67,060	65,011	63,449	61,177	60,686	60,489	59,052	58,215

Source: Department of Education and Science

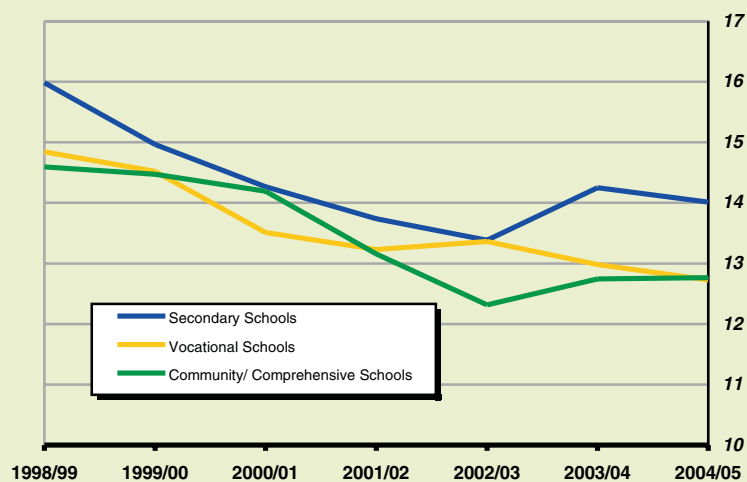
Pupil / Teacher ratio

Table 5.13 Pupils in all second level schools by Leaving Certificate subject, 2005

Number

Subject	Number of pupils			% studying subject	
	Boys	Girls	Total	Boys	Girls
Irish	46,357	49,832	91,189	94.2	94.4
English	49,036	52,589	101,625	99.6	99.6
Latin	161	58	219	0.3	0.1
Greek	11	2	13	0.0	0.0
French	27,301	36,160	63,461	55.5	68.5
German	7,680	9,079	16,579	15.6	17.2
Italian	192	334	526	0.4	0.6
Spanish	1,750	3,156	4,906	3.6	6.0
History	12,592	10,002	22,594	25.6	18.9
Geography	27,735	24,958	52,693	56.4	47.3
Mathematics	49,098	52,546	101,644	99.8	99.5
Applied Maths	1,395	472	1,867	2.8	0.9
Physics	11,555	3,899	15,454	23.5	7.4
Chemistry	6,476	7,877	14,353	13.2	14.9
Physics and Chemistry	934	473	1,407	1.9	0.9
Agricultural Science	5,041	1,687	6,728	10.2	3.2
Biology	16,744	33,985	50,729	34.0	64.4
Agricultural Economics	67	43	110	0.1	0.1
Engineering	10,338	621	10,959	21.0	1.2
Technical Drawing	10,890	977	11,867	22.1	1.9
Construction Studies	17,885	1,368	19,253	36.3	2.6
Home Economics (S & S)	0	0	0	0.0	0.0
Home Economics (New syllabus)	3,222	24,706	27,928	6.6	46.8
Home Economics (General)	0	0	0	0.0	0.0
Accounting	6,420	7,931	14,351	13.0	15.0
Business Studies	17,404	21,558	38,962	35.4	40.8
Economics	5,305	3,127	8,432	10.8	5.9
Economic History	93	38	132	0.2	0.1
Art (with Design option)	4,460	6,452	10,912	9.1	12.2
Art (with Craftwork option)	3,341	6,822	10,163	6.8	12.9
Physical Education	27,281	32,358	59,639	55.4	61.3
Classical Studies	524	574	1,098	1.1	1.1
Computer Studies	12,667	16,285	28,952	25.7	30.8
Keyboarding	11	7	18	0.0	0.0
Choir	271	3,816	4,087	0.6	7.2
Orchestra	0	58	58	0.0	0.1
Religious Education	40,416	44,776	85,192	82.1	84.8
Typewriting	187	392	579	0.4	0.7
Health Education	281	1,331	1,612	0.6	2.5
Speech and Drama	66	1,537	1,603	0.1	2.9
Music	2,130	6,655	8,785	4.3	12.6
Leaving Certificate Programme	49,222	52,801	102,023		

Source: Department of Education and Science

TABLE 5.13

Table 5.14 Leaving Certificate candidates taking selected subjects at ordinary level

Subject	1997	1998	1999	2000	2001	2002	2003	2004	2005
Mathematics	66	70	70	70	71	70	70	68	68
Irish	52	53	53	52	53	52	52	52	52
English	43	43	42	43	39	39	37	37	35
French	29	30	30	32	31	31	31	29	30
Biology	18	18	18	17	17	15	16	15	15
Geography	13	15	11	13	14	13	13	13	13
Business Studies	15	13	11	13	13	13	13	13	13
Mathematics (Alt/Ord)	10	9	9	10	9	10	10	11	10
Home Economics (S & S)	11	10	10	10	9	9	9	9	9
Irish (Foundation)	9	9	9	9	9	10	9	9	9
History	9	9	8	8	7	7	8	8	7
German	6	6	6	6	6	6	6	6	6
Technical Drawing	7	6	6	6	6	5	5	5	5
Art	5	5	5	5	5	5	5	5	5
Physics	5	5	5	5	5	5	5	4	5
Accounting	5	4	4	4	4	4	4	4	4
Construction Studies	4	5	5	5	4	4	4	4	4
Engineering	3	3	3	2	2	3	3	3	3
Economics	2	2	2	2	2	2	2	2	2
Chemistry	2	2	2	2	2	2	2	2	3
Agricultural Science	1	1	1	1	1	2	2	2	2
Spanish	1	1	1	1	1	1	1	1	2
Music	0	0	1	1	1	1	1	1	1
Physics and Chemistry	1	1	1	0	0	1	0	0	0

Source: Department of Education and Science

TABLE 5.14

All Leaving Certificate students taking selected subjects, 2005

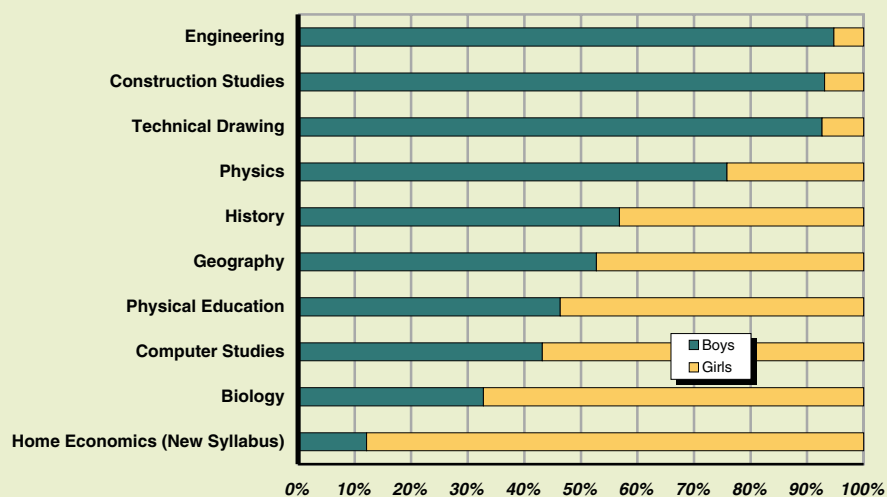


Table 5.15 Leaving Certificate candidates taking selected subjects at higher level

Subject	%								
	1997	1998	1999	2000	2001	2002	2003	2004	2005
English	48	53	53	53	55	57	58	59	60
Geography	30	33	36	37	38	38	39	39	39
Business Studies	20	30	28	27	26	25	25	29	32
Irish	25	27	29	28	28	27	27	27	27
French	26	28	27	28	28	27	27	27	27
Biology	28	23	28	29	29	29	28	27	25
Home Economics (S & S)	24	17	17	18	18	17	17	17	18
Mathematics	16	27	27	25	25	24	23	19	18
History	13	11	11	11	11	12	12	13	14
Art	11	10	10	11	11	11	12	12	12
Construction Studies	9	14	13	13	12	12	13	12	12
Physics	11	9	9	9	9	10	10	11	11
Chemistry	10	10	10	10	10	11	11	11	10
German	10	10	10	9	9	8	8	9	9
Accounting	9	11	11	11	10	9	9	9	9
Economics	6	0	4	5	5	6	6	7	8
Engineering	5	6	6	6	7	7	7	7	7
Technical Drawing	5	5	5	6	6	6	6	6	6
Music	0	5	6	6	6	6	6	6	6
Agricultural Science	3	3	3	4	4	4	4	4	5
Applied Mathematics	2	2	2	2	2	2	2	2	2
Spanish	1	2	2	1	2	2	2	2	2
Physics and Chemistry	1	1	1	1	1	2	1	1	1
Classical Studies	1	1	2	1	1	1	1	1	1

Source: Department of Education and Science

TABLE 5.15

Table 5.16 Leaving Certificate ordinary level grades for most popular subjects, 2005

Subject	Grade					%
	A	B	C	D	E or lower	
Mathematics	13	27	26	21	12	
Irish	3	33	39	20	5	
English	8	30	39	20	3	
French	1	23	43	27	6	
Biology	3	20	30	28	18	
Geography	7	28	35	23	7	
Business Studies	11	30	32	21	5	
Mathematics (Alt/Ord)	8	31	33	20	8	
Home Economics (S & S)	2	24	37	27	9	
Irish (Foundation)	4	30	42	21	3	
History	30	21	17	18	14	
German	2	31	39	21	6	
Technical Drawing	15	26	28	23	8	
Art	2	24	46	24	3	
Physics	18	30	23	18	11	
Accounting	23	24	18	17	17	
Construction Studies	1	18	43	30	9	
Engineering	3	28	41	22	7	
Economics	10	32	32	19	6	
Chemistry	10	26	28	24	12	

Source: Department of Education and Science

Table 5.17 Leaving Certificate higher level grades for most popular subjects, 2005

Subject	Grade					%
	A	B	C	D	E or lower	
English	10	27	39	22	2	
Geography	9	29	36	22	4	
Business Studies	11	27	31	23	7	
Irish	13	34	36	16	1	
French	11	26	35	25	3	
Biology	12	28	32	23	6	
Home Economics (S & S)	7	30	39	21	3	
Mathematics	16	32	31	18	4	
History	13	26	30	23	8	
Art	4	32	44	19	1	
Construction Studies	7	35	38	18	2	
Physics	21	28	23	20	9	
Chemistry	22	30	24	16	7	
German	15	32	35	16	2	
Accounting	21	42	19	11	6	
Economics	12	29	31	22	6	
Engineering	11	31	34	20	4	
Technical Drawing	14	29	32	21	4	
Music	17	54	25	4	0	
Agricultural Science	10	27	34	23	6	
Applied Mathematics	22	28	26	15	9	
Spanish	14	28	33	23	2	
Physics and Chemistry	21	33	24	16	7	
Classical Studies	10	31	30	20	9	

Source: Department of Education and Science

TABLE 5.16

TABLE 5.17

Table 5.18 Educational institutions

Level	Number						
	1994/95	1999/2000	2000/01	2001/02	2002/03	2003/04	2004/05
First level	3,387	3,340	3,323	3,329	3,318	3,321	3,328
Second level	809	782	780	775	769	763	763
Third level	55	56	54	55	55	56	59
Total	4,251	4,178	4,157	4,159	4,142	4,140	4,150
<i>of which aided by the Department of Education and Science</i>	<i>4,126</i>	<i>4,080</i>	<i>4,072</i>	<i>4,067</i>	<i>4,063</i>	<i>4,055</i>	<i>4,060</i>

Source: Department of Education and Science

Table 5.19 Ages of children in special schools for young offenders, 2005

Age	Number							
	Committed		On remand		Health Act		Total	
	Boys	Girls	Boys	Girls	Boys	Girls	Boys	Girls
12 and under	–	–	–	–	6	–	6	–
13	–	–	2	–	6	–	8	–
14	6	1	2	–	5	–	13	1
15	20	1	6	1	3	–	29	2
16	13	1	–	1	4	–	17	2
17 and over	2	–	–	–	–	–	2	–
Total	41	3	10	2	24	–	75	5

Source: Department of Education and Science

Grade distribution of selected Leaving Certificate higher level subjects, 2005

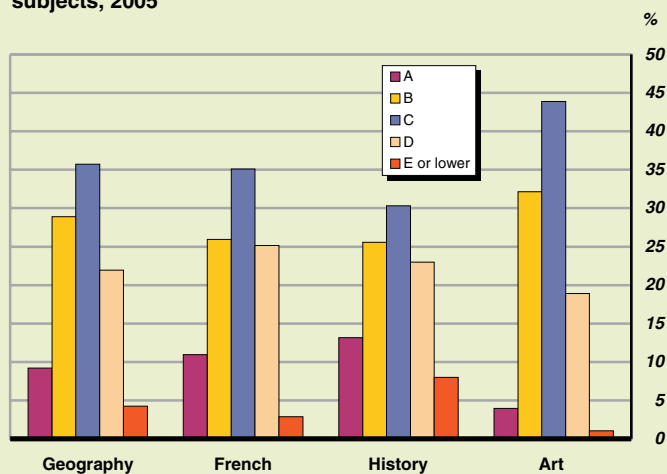


TABLE 5.18

TABLE 5.19

Table 5.20 Pupils conveyed and cost of school transport service scheme

Level	2002		2003	
	Pupils conveyed	Expenditure €m	Pupils conveyed	Expenditure €m
First level	53,040	50.5	53,144	54.7
Public scheduled services	1,855	0.4	1,625	0.4
Special school services	51,185	50.1	51,519	54.3
Second level	75,700	43.2	76,876	44.4
Public scheduled services	8,538	3.0	8,224	3.4
Special school services	67,162	40.2	68,652	41.0
TOTAL	128,740	93.7	130,020	99.1

Source: Department of Education and Science

Table 5.21 First time entrants to third level courses in all institutions, 2004/05

Type of institution	Number		
	Male	Female	Total
HEA Institutions	7,415	11,119	18,534
IOT/Technological Sector	8,705	7,438	16,143
Other	1,574	1,619	3,193
Total	17,694	20,176	37,870

Source: Department of Education and Science

TABLE 5.20

TABLE 5.21

