

Health and Social Conditions

4

| | |
|----------------------------------------------------------------------------------------------------------------|-------|
| Introductory text | 83 |
| Table 4.1 Expenditure on Social Welfare | 89 |
| Table 4.2 Index of rates of payment for long-term unemployed, CPI and gross average industrial earnings | 89 |
| Table 4.3 Recipients of weekly Social Welfare payments by programme | 90 |
| Graph <i>Proportion of recipients of weekly Social Welfare payments by programme, 2004</i> | 90 |
| Table 4.4 Recipients of Social Welfare payments by county, 2004 | 91 |
| Table 4.5 Expenditure on Social Welfare by scheme | 92-93 |
| Table 4.6 Financing of Social Welfare expenditure | 94 |
| Table 4.7 Recipients by type of Old Age Pension | 94 |
| Table 4.8 Recipients and cost of Child Benefit | 95 |
| Graph <i>Number of families in receipt of Child Benefit by number of eligible children</i> | 95 |
| Table 4.9 Recipients of Illness, Disability and Caring payments by type | 96 |
| Table 4.10 Recipients of Unemployment and Employment supports by type of payment | 96 |
| Graph <i>Number of recipients of Unemployment Supports</i> | 96 |
| Table 4.11 Estimated non-capital health expenditure by programme | 97 |
| Table 4.12 Payments by General Medical Services (Payments) Board | 97 |
| Graph <i>GMS(P)B Payments to Pharmacists, Doctors and Dentists</i> | 97 |

| | | |
|-------------------|-------------------------------------------------------------|-----|
| Table 4.13 | Publicly funded acute hospitals statistics, 2003 | 98 |
| Table 4.14 | Psychiatric hospitals and units: in-patients at 31 December | 98 |
| Table 4.15 | HIV positive antibody results | 99 |
| Graph | <i>Cases of and deaths from AIDS</i> | 99 |
| Table 4.16 | Main sites of occurrence of new cancers diagnosed | 100 |
| Table 4.17 | Persons killed and injured on roads | 100 |
| Table 4.18 | Road casualties classified by road user type, 2003 | 101 |
| Table 4.19 | Road casualties classified by age and sex, 2003 | 101 |
| Graph | <i>Road deaths by age group, 2003</i> | 101 |
| Table 4.20 | Fatal accidents reported to the Health and Safety Authority | 102 |
| Graph | <i>Principal causes of fires attended by brigades</i> | 102 |
| Table 4.21 | Causes of fires attended by brigades | 103 |
| Table 4.22 | Deaths due to fire | 103 |
| Graph | <i>Deaths due to fire</i> | 103 |
| Table 4.23 | Number on register of Dáil Electors | 104 |
| Table 4.24 | Votes recorded at Dáil elections | 105 |

4

Health & Social Conditions

- Social Welfare expenditure increased from 7.5% of Gross National Income in 2000 to 9% in 2004.
- The total number of recipients of employment support payments declined by 38% between 1999 and 2004.
- The number of recipients of illness, disability and caring payments rose by 32% between 1999 and 2004.
- Net Non-Capital Health Expenditure rose by 108% from €4,574m in 1999 to €9,528m in 2004.
- The number of HIV positive antibody cases had risen annually to a peak of 399 in 2003, but declined to 356 in 2004.
- Fatal accidents at work fell by 25% in 2004.

Introduction

The statistics in this chapter relate to Social Services, Health Services, Accidents, and the Register of Electors. They have been obtained from a range of administrative sources. The information on social services provides details on Social Welfare expenditure, and recipients of Social Welfare payments. The information on Health includes details on expenditure, hospital admissions and discharges and the incidence of certain diseases. Data on accidents comes from both the Health and Safety Authority in respect of accidents at work and the National Roads Authority regarding road accidents. Data on the incidence and causes of fires is obtained from the Department of the Environment, Heritage and Local Government.

Social Services

From 1999 to 2004 there has been an increase of 80 per cent in expenditure on social welfare payments although the total number of recipients of unemployment support payments declined by 12 per cent. As a proportion of Gross National Income (GNI), total Social Welfare expenditure increased from 7.5 per cent in 2000 to 9 per cent in 2004. A total of 957,732 people were in receipt of a weekly social welfare payment at the end of 2004.

In 2004, the main areas of expenditure by programme group were: Old Age (24%), Child Related (17%), Widows, Widowers and One Parent Families (16%) and Illness, Disability and Caring (16%). The administration of the social welfare system accounted for 4 per cent of total expenditure.

The number of recipients of Old Age payments grew by 16 per cent and the total number of people receiving illness, disability and caring payments rose by 32 per cent over the period 1999 to 2004.

Health

The general hospital programme was by far the largest area of non-capital health expenditure, amounting to 46 per cent of gross expenditure in 2004. Other significant areas of expenditure were the community health services and programmes for people with disabilities, which respectively accounted for 19 per cent and 12 per cent of gross expenditure.

The number of HIV positive antibody cases had risen annually to a peak of 399 in 2003, but declined to 356 in 2004.

Safety

The number of persons killed and injured in road accidents fell by 35 per cent between 1998 and 2003. In 2003, 76 per cent of road fatalities were male and 24 per cent were female.

The incidence of fatal accidents at work fell by 25 per cent in 2004. The agriculture and construction sectors together accounted for 56 per cent of total fatalities.

59 per cent of fires attended by brigades during 2003 were either started maliciously or were due to unknown causes.

Register of Electors

The Register of Dáil Electors showed an overall increase of 16 per cent in the county council areas and an overall decrease of 2 per cent in the city council areas from 1998 to 2005. Galway, with an increase of 8 per cent in the city council area, was the only exception.

Table 4.1

Total Social Welfare expenditures include the full cost of Supplementary Welfare Allowance, administered by the Health Boards as well as expenditure on the Redundancy and Insolvency schemes administered by the Department of Enterprise, Trade and Employment.

Table 4.3 and 4.4

Recipients of child benefit are not included under "Child Related". Adoptive Benefit recipients are not broken down by county but are included in the "Other" category under "Child Related".

Table 4.5

Widowed Parent Grant was introduced in December 1999.

Carer's Benefit was introduced in October 2000.

Farm Assist was introduced in April 1999.

The 2000 out-turn excludes a payment of £120 million from the Social Insurance fund to the National Training Fund, which was established at the end of 2000. From 2001, this fund (which is under the aegis of the Department of Enterprise, Trade and Employment), is being financed by way of a new National Training Fund Levy.

Table 4.6

Payment to National Training Fund 2000 – see note to Table 4.5.

Table 4.9

Carer's Benefit was introduced in October 2000.

There were 20 persons in receipt of Prescribed Relatives Allowance at the end of December 2004. Prescribed Relatives Allowance was replaced by Carer's Allowance in 1990.

Disablement Pension is paid where a person suffers loss of physical or mental faculty as a result of an accident at work or contracting an occupational disease. It can be paid in addition to other Social Welfare payments such as Disability Benefit and Invalidity Pension and can also be paid where a person continues to work.

Unemployability Supplement is paid as an increase to Disablement Benefit where a person is permanently incapable of work and does not qualify for any other Social Welfare payment. 911 persons were in receipt of an Unemployability Supplement payment at the end of 2004.

Constant Attendance Allowance is paid as an increase to Disablement Pension where the degree of disablement is assessed at between 50% and 100% and the person has been certified as being in need of constant care and attention. There were 71 persons in receipt of Constant Attendance Allowance at the end of 2004.

Table 4.10

The figures for Back to Work Allowances include Back to Work Allowance and Back to Work Enterprise Allowance. The qualification rules for these schemes changed at the end of 2002.

Farm Assist was introduced in April 1999 and replaced the Smallholders Unemployment Assistance Scheme. The great majority of recipients of the Smallholders Unemployment Assistance Scheme transferred to Farm Assist during the period 1999 to 2000.

Table 4.13

District hospitals are not included in this table.

Figures for Average Number of In-Patient / Day Beds Available, refer to the average number of beds available for use during the year, taking beds that have been temporarily closed or opened into account.

The Average Length of Stay calculations for area and national totals, exclude Incorporated Orthopaedic, NRH, Peamount, Baldoyle and Manorhamilton because of the nature of their specialities which involve substantially longer stays than in acute hospitals generally.

Table 4.14

The figure for the Eastern region includes the Central Mental Hospital but not St. Joseph's Intellectual Disability Services at St. Ita's Hospital.

Table 4.15

These figures are produced by the Health Protection Surveillance Centre (HPSC), formerly the National Disease Surveillance Centre.

Chart on Aids

AIDS cases are reported to the Health Protection Surveillance Centre (HPSC), as part of a voluntary anonymised surveillance system. The HPSC now report AIDS cases by year of diagnosis as recommended by the National AIDS Strategy Committee (NASC). Formerly it reported the data by year of report. The AIDS data is analysed here by year of diagnosis and the deaths by year of death. The graph includes all cases diagnosed up to the end of 2004 and reported to the HPSC up to the end of June 2005. The data should be interpreted with caution due to both significant delays in and under reporting. It is likely that the number of cases of AIDS and deaths among AIDS cases will be revised upwards in particular for the years 2003 and 2004.

Table 4.18

Accidents are omitted from the figures when the injury severity is not known.

Table 4.18

Accidents are omitted from the figures where sex of casualty is not specified.

Table 4.1 Expenditure on Social Welfare

| Year | Total Social Welfare expenditure | Social Welfare expenditure as a percentage of: | |
|------|----------------------------------|------------------------------------------------|------------------------|
| | | Gross National Income | Gross Domestic Product |
| | €m | % | % |
| 1995 | 5,332 | 11.1 | 10.2 |
| 1996 | 5,558 | 10.4 | 9.6 |
| 1997 | 5,744 | 9.4 | 8.6 |
| 1998 | 6,046 | 8.7 | 7.8 |
| 1999 | 6,283 | 8.1 | 7.0 |
| 2000 | 6,713 | 7.5 | 6.5 |
| 2001 | 7,842 | 7.9 | 6.8 |
| 2002 | 9,517 | 8.8 | 7.4 |
| 2003 | 10,493 | 8.9 | 7.8 |
| 2004 | 11,291 | 9.0 | 7.7 |

Source: Department of Social and Family Affairs

Table 4.2 Index of rates of payment for long-term unemployed, CPI and gross average industrial earnings

Base year 1995=100

| Year | Long-term unemployed | | | | Consumer Price Index | Gross average industrial earnings |
|------|----------------------|--------|--------------------------------------------------|---------------------------------------------------|----------------------|-----------------------------------|
| | Single person | Couple | Couple with two children including Child Benefit | Couple with four children including Child Benefit | | |
| 1995 | 100.0 | 100.0 | 100.0 | 100.0 | 100.0 | 100.0 |
| 1996 | 103.2 | 103.0 | 102.8 | 102.7 | 101.7 | 102.7 |
| 1997 | 108.0 | 107.5 | 106.4 | 106.7 | 103.1 | 105.4 |
| 1998 | 112.8 | 111.7 | 109.9 | 110.2 | 105.6 | 110.2 |
| 1999 | 117.6 | 116.7 | 114.5 | 114.8 | 107.4 | 122.2 |
| 2000 | 124.0 | 124.5 | 122.8 | 123.7 | 113.3 | 130.3 |
| 2001 | 136.8 | 139.5 | 141.9 | 146.2 | 118.9 | 140.6 |
| 2002 | 149.7 | 155.6 | 161.9 | 169.3 | 124.3 | 149.8 |
| 2003 | 157.2 | 163.5 | 169.7 | 177.3 | 128.7 | 160.0 |
| 2004 | 169.9 | 176.6 | 180.7 | 187.4 | 131.5 | 167.7 |

Source: Department of Social and Family Affairs

Table 4.3 Recipients of weekly Social Welfare payments by programme

| Programme | Number | | | | | | |
|------------------------------------------|----------------|----------------|----------------|----------------|----------------|----------------|----------------|
| | 1998 | 1999 | 2000 | 2001 | 2002 | 2003 | 2004 |
| Old Age | 256,809 | 261,281 | 267,760 | 276,065 | 287,395 | 298,169 | 303,653 |
| Widows, Widowers and One Parent Families | 198,094 | 203,091 | 206,130 | 209,011 | 211,385 | 211,774 | 212,952 |
| Child Related | 6,900 | 7,640 | 8,067 | 12,134 | 12,696 | 12,186 | 11,974 |
| Illness, Disability and Caring | 161,588 | 172,104 | 181,569 | 193,536 | 206,137 | 216,292 | 227,347 |
| Unemployment Supports | 182,087 | 149,705 | 116,069 | 126,447 | 137,982 | 145,339 | 131,539 |
| Employment Supports | 55,885 | 65,120 | 64,833 | 56,582 | 50,920 | 44,113 | 40,216 |
| Supplementary Welfare Allowance | 16,300 | 21,269 | 25,094 | 29,167 | 32,073 | 31,217 | 29,748 |
| Miscellaneous | 586 | 548 | 472 | 433 | 383 | 342 | 303 |
| Total Recipients | 878,249 | 880,758 | 869,994 | 903,375 | 938,971 | 959,432 | 957,732 |

Source: Department of Social and Family Affairs

Proportion of recipients of weekly Social Welfare payments by programme, 2004

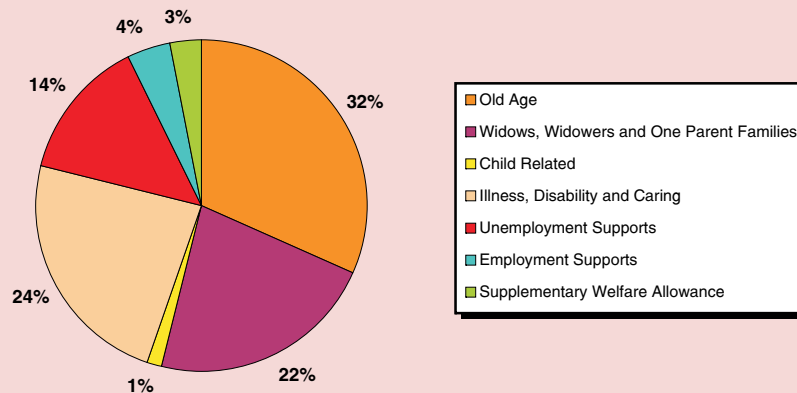


Table 4.4 Recipients of Social Welfare payments by county, 2004

| County | Number | | | | | | |
|--------------|----------------|---------------------------------------------------|------------------|--------------------------------------|------------------|------------------------|---------------------------------------|
| | Old Age | Widows, Widowers and One Parent Families | Child Related | Illness, Disability and Caring | Live Register | Employment Supports | Supplementary Welfare Allowance |
| Carlow | 3,329 | 2,698 | 134 | 3,498 | 2,223 | 573 | 463 |
| Cavan | 4,930 | 2,894 | 139 | 3,142 | 2,072 | 737 | 219 |
| Clare | 7,429 | 4,803 | 283 | 5,086 | 3,851 | 1,154 | 603 |
| Cork | 31,469 | 22,658 | 1,256 | 28,547 | 15,920 | 3,781 | 2,997 |
| Donegal | 11,401 | 7,506 | 346 | 9,833 | 9,440 | 3,496 | 964 |
| Dublin | 72,245 | 62,223 | 3,402 | 58,716 | 39,361 | 7,411 | 11,175 |
| Galway | 14,586 | 9,387 | 613 | 10,885 | 8,797 | 2,761 | 1,760 |
| Kerry | 10,319 | 6,619 | 344 | 7,781 | 6,732 | 1,931 | 889 |
| Kildare | 6,816 | 7,135 | 586 | 7,834 | 4,350 | 907 | 1,005 |
| Kilkenny | 5,426 | 3,418 | 201 | 3,982 | 2,489 | 680 | 479 |
| Laois | 3,890 | 2,669 | 178 | 2,873 | 2,014 | 481 | 314 |
| Leitrim | 2,628 | 1,480 | 70 | 1,939 | 1,028 | 494 | 125 |
| Limerick | 12,060 | 9,518 | 457 | 12,311 | 7,245 | 1,611 | 1,251 |
| Longford | 2,715 | 2,010 | 87 | 2,348 | 1,736 | 508 | 264 |
| Louth | 7,619 | 6,376 | 308 | 7,617 | 6,743 | 1,266 | 984 |
| Mayo | 10,379 | 6,053 | 278 | 7,646 | 5,420 | 2,670 | 724 |
| Meath | 7,164 | 5,518 | 555 | 6,295 | 3,137 | 699 | 1,102 |
| Monaghan | 4,219 | 2,618 | 142 | 3,106 | 2,335 | 967 | 218 |
| Offaly | 4,313 | 3,256 | 182 | 4,042 | 2,563 | 562 | 251 |
| Roscommon | 4,752 | 2,430 | 128 | 3,058 | 1,266 | 711 | 330 |
| Sligo | 4,618 | 2,998 | 163 | 3,593 | 2,043 | 912 | 197 |
| Tipperary | 11,489 | 7,788 | 437 | 8,864 | 5,902 | 1,533 | 908 |
| Waterford | 7,513 | 5,689 | 287 | 5,905 | 7,164 | 1,196 | 889 |
| Westmeath | 4,908 | 4,117 | 206 | 4,215 | 3,658 | 669 | 433 |
| Wexford | 9,200 | 7,091 | 353 | 7,266 | 6,773 | 1,549 | 661 |
| Wicklow | 7,120 | 6,016 | 416 | 5,803 | 4,554 | 901 | 543 |
| Other | 31,116 | 7,984 | 52 | 1,162 | | 56 | |
| Total | 303,653 | 212,952 | 11,603 | 227,347 | 158,816 | 40,216 | 29,748 |

Source: Department of Social and Family Affairs

TABLE 4.4

Table 4.5 Expenditure on Social Welfare by scheme

€m

| Scheme | 1998 | 1999 | 2000 | 2001 | 2002 | 2003 | 2004 ¹ |
|------------------------------------------------------|----------------|----------------|----------------|----------------|----------------|----------------|-------------------|
| Old Age | 1,425.5 | 1,525.5 | 1,707.0 | 1,987.5 | 2,296.3 | 2,500.0 | 2,728.8 |
| Old Age (Contributory) Pension | 461.0 | 498.1 | 577.4 | 716.6 | 868.5 | 946.9 | 1,050.3 |
| Retirement Pension | 463.5 | 511.5 | 594.2 | 697.4 | 803.4 | 899.0 | 983.7 |
| Old Age (Non-contributory) Pension | 424.6 | 439.4 | 456.2 | 490.7 | 537.3 | 565.0 | 600.0 |
| Pre-Retirement Allowance | 76.4 | 76.5 | 79.3 | 82.8 | 87.0 | 89.1 | 94.7 |
| Widows, Widowers and One Parent Families | 1,088.5 | 1,165.7 | 1,265.8 | 1,413.0 | 1,592.6 | 1,706.6 | 1,827.7 |
| Widow/Widower's (Contributory) Pension | 517.5 | 547.8 | 597.4 | 673.0 | 761.5 | 826.1 | 906.5 |
| Widow/Widower's (Non-contributory) Pension | 84.1 | 88.4 | 94.9 | 107.2 | 116.5 | 116.8 | 122.3 |
| Deserted Wife's Benefit | 88.6 | 86.0 | 83.9 | 84.9 | 88.2 | 89.2 | 89.7 |
| Deserted Wife's Allowance | 8.5 | 8.4 | 8.4 | 9.2 | 10.2 | 10.6 | 11.0 |
| Prisoner's Wife's Allowance | 0.0 | 0.0 | 0.0 | 0.0 | 0.0 | 0.0 | 0.0 |
| One Parent Family Payment | 389.9 | 435.2 | 480.1 | 537.4 | 613.0 | 660.6 | 694.8 |
| Widowed Parent Grant (Contributory/Non-contributory) | | | 1.1 | 1.4 | 3.1 | 3.2 | 3.4 |
| Child Related | 584.8 | 623.6 | 703.9 | 1,058.1 | 1,578.9 | 1,789.3 | 1,903.3 |
| Maternity Benefit | 48.5 | 52.7 | 58.0 | 78.9 | 99.1 | 107.3 | 121.6 |
| Health and Safety Benefit | 0.1 | 0.2 | 0.2 | 0.2 | 0.2 | 0.2 | 0.1 |
| Adoptive Benefit | 0.2 | 0.2 | 0.2 | 0.3 | 0.6 | 0.5 | 0.6 |
| Orphan's (Contributory) Allowance | 3.0 | 3.7 | 5.6 | 9.4 | 11.7 | 8.9 | 9.7 |
| Orphan's (Non-contributory) Pension | 1.3 | 1.8 | 2.4 | 4.4 | 4.5 | 5.8 | 6.2 |
| Child Benefit | 531.7 | 565.0 | 637.5 | 964.8 | 1,462.8 | 1,666.5 | 1,765.1 |
| Illness, Disability and Caring | 855.6 | 935.4 | 1,048.6 | 1,233.1 | 1,453.6 | 1,621.1 | 1,827.4 |
| Disability Benefit | 241.4 | 262.7 | 280.8 | 329.9 | 385.3 | 433.5 | 479.0 |
| Invalidity Pension | 264.3 | 279.6 | 311.4 | 354.5 | 403.6 | 440.3 | 487.4 |
| Carer's Benefit | | | 0.0 | 2.5 | 5.8 | 6.9 | 7.7 |
| Injury Benefit | 9.0 | 9.3 | 9.8 | 10.9 | 11.8 | 11.9 | 13.6 |
| Disablement Benefit | 48.1 | 49.4 | 50.7 | 54.3 | 59.4 | 60.8 | 62.6 |
| Death Benefit | 4.1 | 4.4 | 4.7 | 5.1 | 5.6 | 5.8 | 6.2 |
| Disability Allowance | 219.6 | 245.2 | 279.2 | 332.3 | 407.6 | 463.6 | 544.5 |
| Medical Care | 0.2 | 0.2 | 0.2 | 0.2 | 0.2 | 0.3 | 0.3 |
| Carer's Allowance | 57.3 | 72.9 | 99.6 | 130.3 | 160.0 | 183.3 | 210.3 |
| Blind Person's Pension | 11.7 | 11.8 | 12.3 | 13.2 | 14.2 | 14.8 | 15.9 |
| Unemployment Supports | 1,070.5 | 909.4 | 734.3 | 720.6 | 935.5 | 1,043.1 | 1,069.4 |
| Unemployment Benefit | 300.5 | 293.8 | 265.2 | 290.7 | 423.5 | 477.1 | 455.5 |
| Unemployment Assistance | 770.0 | 615.6 | 469.1 | 429.9 | 512.0 | 566.0 | 613.8 |
| Employment Supports | 200.2 | 251.1 | 285.3 | 283.7 | 269.1 | 247.6 | 238.1 |
| Family Income Supplement | 36.4 | 41.1 | 39.4 | 37.1 | 42.4 | 45.4 | 55.8 |
| Employment Support Services | 163.8 | 190.1 | 204.5 | 196.0 | 168.1 | 139.4 | 116.0 |
| Farm Assist/Smallholders | | 19.9 | 41.4 | 50.7 | 58.6 | 62.8 | 66.3 |

Table 4.5 Expenditure on Social Welfare by scheme (continued)

| | €m | | | | | | |
|----------------------------------------------------------|----------------|----------------|----------------|----------------|----------------|-----------------|-------------------|
| Scheme | 1998 | 1999 | 2000 | 2001 | 2002 | 2003 | 2004 ¹ |
| Supplementary Welfare Allowance and Miscellaneous | 525.5 | 561.8 | 645.2 | 772.2 | 970.8 | 1,158.5 | 1,261.6 |
| Supplementary Welfare Allowance | 223.1 | 239.7 | 294.9 | 363.6 | 484.9 | 587.8 | 601.6 |
| Treatment Benefit | 39.2 | 45.2 | 57.8 | 56.5 | 60.8 | 63.3 | 70.5 |
| Rent Allowance | 0.8 | 0.8 | 0.8 | 0.7 | 0.7 | 0.7 | 0.8 |
| Free Schemes | 194.7 | 196.8 | 204.3 | 241.0 | 296.0 | 340.5 | 364.3 |
| Miscellaneous | 39.5 | 50.1 | 64.3 | 76.9 | 69.6 | 68.5 | 76.8 |
| Equal Treatment Payments | 9.0 | 4.1 | 0.3 | 0.1 | 0.0 | 0.0 | 0.0 |
| Redundancy and Insolvency | 19.2 | 25.0 | 22.9 | 33.4 | 58.7 | 97.6 | 147.7 |
| Total | 5,750.7 | 5,972.5 | 6,390.2 | 7,468.1 | 9,096.7 | 10,066.1 | 10,856.2 |
| Administration | 296.2 | 309.7 | 323.1 | 374.7 | 420.1 | 427.0 | 434.9 |
| Total expenditure | 6,046.8 | 6,282.2 | 6,713.3 | 7,842.9 | 9,516.8 | 10,493.1 | 11,291.1 |

¹ Provisional

Source: Department of Social and Family Affairs

TABLE 4.5

Table 4.6 Financing of Social Welfare expenditure

| | % | | | | | | |
|--------------------------------------------|----------------|----------------|----------------|----------------|----------------|-----------------|-------------------|
| Source | 1998 | 1999 | 2000 | 2001 | 2002 | 2003 | 2004 ¹ |
| Social Welfare expenditure | | | | | | | |
| State | 56.0 | 54.7 | 52.7 | 52.7 | 53.8 | 53.9 | 53.3 |
| Employers | 33.2 | 37.1 | 41.2 | 41.5 | 37.0 | 35.2 | 35.4 |
| Employees | 9.0 | 9.9 | 11.1 | 10.5 | 10.2 | 10.3 | 11.1 |
| Self-employed | 2.7 | 3.3 | 2.8 | 2.4 | 2.7 | 2.6 | 3.2 |
| National Lottery | 0.2 | 0.5 | 0.5 | 0.5 | 0.3 | 0.0 | 0.0 |
| Other receipts including investment income | 0.0 | 0.1 | 0.4 | 0.6 | 0.5 | 0.4 | 0.3 |
| Social insurance fund surplus | -1.1 | -5.4 | -6.5 | -8.0 | -4.4 | -2.4 | -3.3 |
| Payment to the National Training Fund | | | -2.3 | | | | |
| Total % | 100.0 | 100.0 | 100.0 | 100.0 | 100.0 | 100.0 | 100.0 |
| Total Expenditure (€m) | 6,046.8 | 6,282.2 | 6,713.3 | 7,842.9 | 9,516.8 | 10,493.1 | 11,291.1 |

¹ Provisional

Source: Department of Social and Family Affairs

Table 4.7 Recipients by type of Old Age Pension

| | Number | | | | |
|------|--------------------------------------|-----------------------|------------------------------------------|---------------------------------|---------|
| Year | Old Age (contributory) Pension | Retirement Pension | Old Age (non-contributory) Pension | Pre- retirement Allowance | Total |
| 1993 | 71,861 | 58,400 | 111,011 | 15,882 | 257,154 |
| 1994 | 70,820 | 62,211 | 108,301 | 15,284 | 256,616 |
| 1995 | 69,179 | 65,761 | 102,984 | 15,023 | 252,947 |
| 1996 | 67,988 | 69,740 | 101,624 | 14,151 | 253,503 |
| 1997 | 70,022 | 71,793 | 98,835 | 13,647 | 254,297 |
| 1998 | 71,706 | 75,316 | 95,890 | 13,897 | 256,809 |
| 1999 | 76,241 | 78,868 | 93,023 | 13,149 | 261,281 |
| 2000 | 86,217 | 78,370 | 90,652 | 12,521 | 267,760 |
| 2001 | 94,871 | 80,326 | 89,061 | 11,807 | 276,065 |
| 2002 | 105,295 | 83,055 | 87,823 | 11,222 | 287,395 |
| 2003 | 113,970 | 86,509 | 86,733 | 10,957 | 298,169 |
| 2004 | 118,383 | 88,870 | 85,172 | 11,228 | 303,653 |

Source: Department of Social and Family Affairs

Table 4.8 Recipients and cost of Child Benefit

| Eligible children in family | Recipient families | | | | | | |
|-----------------------------------------|--------------------|------------------|------------------|------------------|------------------|------------------|----------------------------|
| | 1998 | 1999 | 2000 | 2001 | 2002 | 2003 | 2004 |
| 1 | 190,083 | 197,457 | 203,342 | 208,712 | 214,916 | 221,515 | 221,837 |
| 2 | 169,509 | 170,777 | 171,646 | 173,525 | 176,284 | 181,018 | 185,282 |
| 3 | 93,671 | 92,172 | 90,667 | 89,564 | 89,397 | 90,512 | 92,379 |
| 4 | 35,932 | 33,979 | 32,431 | 31,225 | 30,552 | 29,996 | 30,542 |
| 5 | 10,592 | 9,651 | 8,795 | 8,257 | 7,884 | 7,732 | 7,619 |
| 6 | 3,304 | 2,965 | 2,628 | 2,450 | 2,275 | 2,161 | 2,175 |
| 7 | 1,071 | 980 | 869 | 742 | 712 | 669 | 679 |
| 8 | 401 | 324 | 294 | 287 | 267 | 264 | 258 |
| 9 | 145 | 107 | 89 | 94 | 95 | 88 | 91 |
| 10 | 57 | 56 | 48 | 39 | 36 | 34 | 28 |
| 11 | 22 | 22 | 20 | 16 | 15 | 15 | 16 |
| 12 | 16 | 11 | 7 | 6 | 7 | 4 | 4 |
| 13 | 6 | 2 | 3 | 1 | 0 | 0 | 0 |
| 14 | 2 | 1 | 1 | 1 | 1 | 1 | 1 |
| Total families | 504,811 | 508,504 | 510,840 | 514,919 | 522,441 | 534,009 | 540,911 |
| Total children | 1,039,746 | 1,028,877 | 1,018,175 | 1,014,340 | 1,019,551 | 1,034,851 | 1,051,005 |
| Total cost of Child Benefit (€m) | 531.7 | 565.0 | 637.5 | 964.8 | 1,462.8 | 1,666.5 | 1,765.1¹ |

¹ Provisional
Source: Department of Social and Family Affairs

TABLE 4.8

Number of families in receipt of Child Benefit by number of eligible children

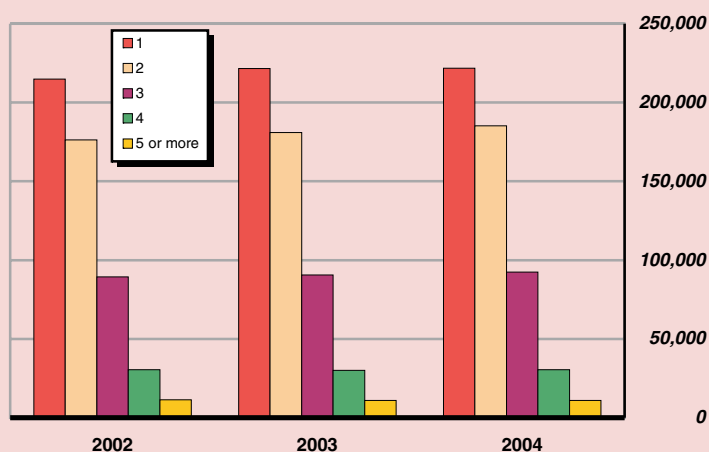


Table 4.9 Recipients of Illness, Disability and Caring payments by type

Number

| Payment type | 1998 | 1999 | 2000 | 2001 | 2002 | 2003 | 2004 |
|----------------------------|----------------|----------------|----------------|----------------|----------------|----------------|----------------|
| Disability Benefit | 43,766 | 45,535 | 46,940 | 50,715 | 54,590 | 57,464 | 58,276 |
| Invalidity Pension | 44,925 | 46,946 | 48,663 | 50,615 | 52,147 | 53,414 | 55,864 |
| Interim Disability Benefit | 439 | 514 | 488 | 449 | 404 | 295 | 316 |
| Carer's Benefit | | | 50 | 425 | 615 | 639 | 679 |
| Disability Allowance | 47,126 | 50,431 | 54,303 | 57,655 | 62,783 | 67,720 | 72,976 |
| Carer's Allowance | 11,416 | 14,387 | 16,478 | 18,785 | 20,395 | 21,316 | 23,030 |
| Blind Person's Pension | 2,358 | 2,304 | 2,229 | 2,125 | 2,095 | 2,061 | 2,027 |
| Injury Benefit | 746 | 748 | 828 | 861 | 828 | 821 | 915 |
| Death Benefit Pension | 630 | 662 | 665 | 676 | 668 | 664 | 652 |
| Disablement Pension | 10,182 | 10,577 | 10,925 | 11,230 | 11,612 | 11,898 | 12,162 |
| Total | 161,588 | 172,104 | 181,569 | 193,536 | 206,137 | 216,292 | 227,347 |

Source: Department of Social and Family Affairs

Table 4.10 Recipients of Unemployment and Employment supports by type of payment

Number

| Payment type | 1999 | 2000 | 2001 | 2002 | 2003 | 2004 |
|-----------------------------------------------|----------------|----------------|----------------|----------------|----------------|----------------|
| Total Recipients Unemployment Supports | 149,705 | 116,069 | 126,447 | 137,982 | 145,339 | 131,539 |
| Unemployment Benefit | 56,576 | 46,565 | 59,884 | 66,416 | 70,090 | 57,699 |
| Unemployment Assistance | 93,129 | 69,504 | 66,563 | 71,566 | 75,249 | 73,840 |
| Total Recipients Employment Supports | 65,120 | 64,833 | 56,892 | 50,920 | 44,113 | 40,216 |
| Back to Work Allowances | 37,612 | 39,009 | 32,191 | 24,986 | 17,069 | 11,566 |
| Back to Education Allowance | 4,518 | 4,237 | 4,101 | 5,041 | 5,696 | 5,247 |
| Part-time Job Incentive Scheme | 567 | 474 | 340 | 336 | 324 | 326 |
| Family Income Supplement | 14,549 | 13,062 | 11,880 | 12,043 | 12,317 | 14,727 |
| Farm Assist/Smallholders | 7,874 | 8,051 | 8,380 | 8,514 | 8,707 | 8,350 |

Source: Department of Social and Family Affairs

Number of recipients of Unemployment Supports

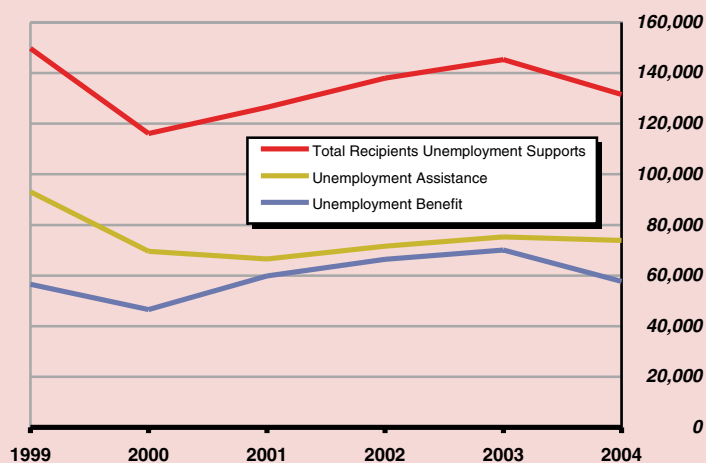


Table 4.11 Estimated non-capital health expenditure by programme

| €m | | | | | | | |
|-------------------------------------|----------------|----------------|----------------|----------------|----------------|----------------|-------------------|
| Programme | 1998 | 1999 | 2000 | 2001 | 2002 | 2003 | 2004 ¹ |
| Community Protection Programme | 99.9 | 136.0 | 224.8 | 314.3 | 275.3 | 302.2 | 333.5 |
| Community Health Services Programme | 687.2 | 883.5 | 985.0 | 1,191.6 | 1,526.1 | 1,678.0 | 1,868.7 |
| Community Welfare Programme | 285.5 | 336.5 | 445.9 | 581.4 | 703.8 | 774.2 | 841.2 |
| Psychiatric Programme | 347.5 | 394.5 | 433.7 | 497.1 | 563.7 | 619.5 | 661.4 |
| Programme for the disabled | 436.6 | 520.8 | 651.6 | 815.9 | 962.9 | 1,155.9 | 1,230.6 |
| General Hospital Programme | 1,988.5 | 2,317.7 | 2,604.5 | 3,291.4 | 3,801.5 | 4,180.7 | 4,518.8 |
| General Support Programme | 194.8 | 218.1 | 264.9 | 318.3 | 333.5 | 407.0 | 436.6 |
| Gross Total | 4,040.0 | 4,807.3 | 5,610.3 | 7,010.1 | 8,166.7 | 9,117.4 | 9,890.8 |
| Total Non-Capital Income | 220.9 | 233.4 | 251.3 | 270.8 | 300.2 | 334.3 | 362.9 |
| Net Total | 3,819.1 | 4,573.9 | 5,359.1 | 6,739.3 | 7,866.5 | 8,783.1 | 9,528.0 |

¹ Estimated
Source: Department of Health and Children

TABLE 4.11
TABLE 4.12

Table 4.12 Payments by General Medical Services (Payments) Board

| €m | | | | | | |
|------------------------------|--------------|--------------|----------------|----------------|----------------|----------------|
| Category | 1999 | 2000 | 2001 | 2002 | 2003 | 2004 |
| Doctors | 154.8 | 169.9 | 211.8 | 282.1 | 295.7 | 317.5 |
| Pharmacists | 417.2 | 527.6 | 670.9 | 813.2 | 937.7 | 1,085.9 |
| Dentists | 18.3 | 38.1 | 41.7 | 45.7 | 49.9 | 52.5 |
| General Practice development | 9.3 | 10.2 | 11.6 | 17.6 | 13.1 | 15.8 |
| High tech drugs scheme | 42.3 | 51.9 | 65.1 | 84.6 | 109.1 | 148.2 |
| Optometrists | 1.8 | 8.7 | 9.8 | 13.9 | 13.8 | 17.4 |
| Administration | 9.3 | 11.8 | 12.7 | 13.7 | 12.5 | 15.5 |
| Total | 653.0 | 818.2 | 1,023.6 | 1,270.9 | 1,431.8 | 1,652.8 |

Source: General Medical Services Report

GMS(P)B Payments to Pharmacists, Doctors and Dentists

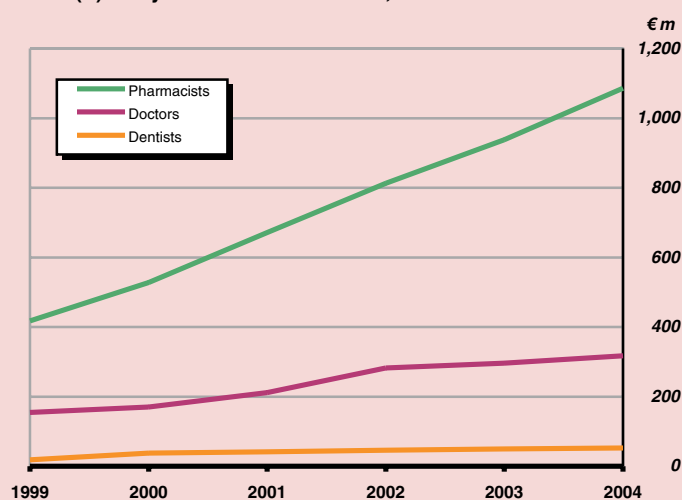


Table 4.13 Publicly funded acute hospitals statistics, 2003

| Health Board area | Number of hospitals | Average number of in-patient beds available | In-patients discharged/deaths | Average length of stay in days | Average number of day beds available | Day cases |
|-------------------|---------------------|---------------------------------------------|-------------------------------|--------------------------------|--------------------------------------|----------------|
| Eastern | 22 | 4,975 | 186,969 | 8.0 | 393 | 197,652 |
| Midland | 3 | 500 | 31,903 | 5.0 | 37 | 18,737 |
| Mid-Western | 6 | 827 | 45,744 | 5.8 | 62 | 28,319 |
| North-Eastern | 5 | 857 | 47,326 | 5.3 | 70 | 28,028 |
| North-Western | 3 | 737 | 37,533 | 5.5 | 59 | 37,415 |
| South-Eastern | 6 | 1,250 | 69,114 | 5.4 | 116 | 34,665 |
| Southern | 9 | 1,854 | 79,848 | 6.5 | 105 | 65,073 |
| Western | 5 | 1,299 | 69,293 | 5.7 | 67 | 38,787 |
| Total | 59 | 12,299 | 567,730 | 6.5 | 909 | 448,676 |

Source: Department of Health and Children

Table 4.14 Psychiatric hospitals and units: in-patients at 31 December

| Health Board area | 1997 | 1998 | 1999 | 2000 | 2001 | 2002 | 2003 |
|-------------------|--------------|--------------|--------------|--------------|--------------|--------------|--------------|
| Eastern | 1,404 | 1,419 | 1,324 | 1,273 | 1,244 | 1,186 | 1,095 |
| Midland | 336 | 303 | 278 | 281 | 271 | 252 | 266 |
| Mid-Western | 434 | 429 | 427 | 424 | 383 | 270 | 201 |
| North-Eastern | 277 | 260 | 229 | 197 | 194 | 166 | 161 |
| North-Western | 192 | 191 | 166 | 141 | 141 | 122 | 132 |
| South-Eastern | 802 | 828 | 762 | 770 | 684 | 680 | 677 |
| Southern | 725 | 772 | 716 | 639 | 634 | 549 | 510 |
| Western | 650 | 618 | 567 | 505 | 454 | 435 | 385 |
| Total | 4,820 | 4,820 | 4,469 | 4,230 | 4,005 | 3,660 | 3,427 |

Source: Department of Health and Children

TABLE 4.13

TABLE 4.14

Table 4.15 HIV positive antibody results

| Category | Cases | | | | | |
|------------------------------------|------------|------------|------------|------------|------------|------------|
| | 1999 | 2000 | 2001 | 2002 | 2003 | 2004 |
| Heterosexuals | 59 | 127 | 173 | 232 | 223 | 178 |
| Homosexuals/Bisexuals | 40 | 72 | 73 | 46 | 75 | 62 |
| Intravenous Drug Users | 69 | 83 | 38 | 50 | 49 | 71 |
| Mother to Child transmission (MTC) | n/a | 4 | 6 | 8 | 12 | 3 |
| Other | 18 | 4 | 2 | 5 | 6 | 5 |
| Unknown | 0 | 0 | 7 | 23 | 34 | 37 |
| Total | 186 | 290 | 299 | 364 | 399 | 356 |

Source: National Disease Surveillance Centre

Cases of and deaths from AIDS

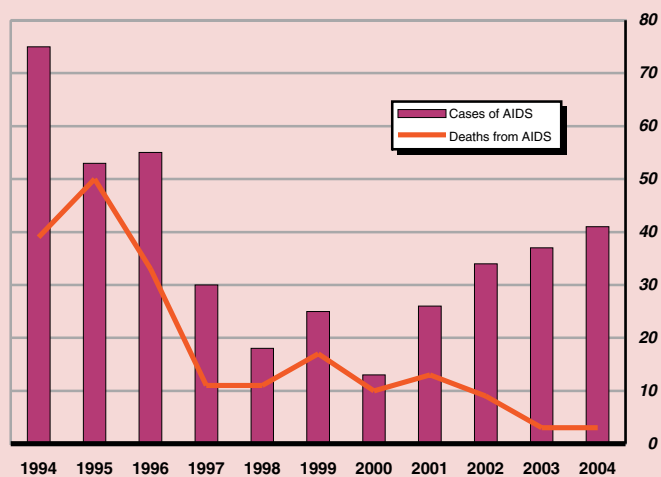


TABLE 4.15

Table 4.16 Main sites of occurrence of new cancers diagnosed

| Cancer site | Cases | | | | | | | | |
|--------------------|---------------|---------------|---------------|---------------|---------------|---------------|---------------|---------------|---------------|
| | Male | | | Female | | | Total | | |
| | 2001 | 2002 | 2003 | 2001 | 2002 | 2003 | 2001 | 2002 | 2003 |
| Non-melanoma skin | 2,782 | 2,810 | 2,999 | 2,553 | 2,453 | 2,703 | 5,335 | 5,263 | 5,702 |
| Colorectal | 1,120 | 1,100 | 1,113 | 822 | 842 | 884 | 1,942 | 1,942 | 1,997 |
| Breast | 14 | 16 | 25 | 2,020 | 2,215 | 2,360 | 2,034 | 2,231 | 2,385 |
| Lung | 1,020 | 1,041 | 1,143 | 607 | 656 | 738 | 1,627 | 1,697 | 1,881 |
| Prostate | 1,824 | 2,076 | 2,052 | – | – | – | 1,824 | 2,076 | 2,052 |
| Cervix | – | – | – | 185 | 211 | 201 | 185 | 211 | 201 |
| Melanoma | 182 | 197 | 210 | 281 | 342 | 314 | 463 | 539 | 524 |
| Lymphoma | 314 | 307 | 297 | 265 | 266 | 244 | 579 | 573 | 541 |
| Stomach | 288 | 280 | 285 | 185 | 172 | 198 | 473 | 452 | 483 |
| Bladder | 337 | 326 | 374 | 125 | 147 | 156 | 462 | 473 | 530 |
| Pancreas | 188 | 205 | 186 | 174 | 203 | 198 | 362 | 408 | 384 |
| Leukaemia | 215 | 251 | 175 | 171 | 163 | 92 | 386 | 414 | 267 |
| Ovary | – | – | – | 347 | 365 | 423 | 347 | 365 | 423 |
| Oesophagus | 218 | 211 | 246 | 120 | 120 | 153 | 338 | 331 | 399 |
| Kidney | 210 | 238 | 217 | 106 | 120 | 140 | 316 | 358 | 357 |
| Brain and meninges | 177 | 184 | 178 | 127 | 165 | 133 | 304 | 349 | 311 |
| Womb | – | – | – | 241 | 278 | 285 | 241 | 278 | 285 |
| Myeloma | 121 | 120 | 100 | 75 | 84 | 81 | 196 | 204 | 181 |
| Head and neck | 150 | 187 | 194 | 58 | 89 | 103 | 208 | 276 | 297 |
| Other | 1,681 | 1,915 | 2,138 | 3,170 | 3,284 | 3,508 | 4,851 | 5,199 | 5,646 |
| Total | 10,841 | 11,464 | 11,929 | 11,632 | 12,175 | 12,917 | 22,473 | 23,639 | 24,846 |

Source: National Cancer Registry Ireland

Table 4.17 Persons killed and injured on roads

| Year | Number | | |
|------|---------------|--------------------|--------|
| | Number killed | Number of injuries | Total |
| 1992 | 415 | 10,188 | 10,603 |
| 1993 | 431 | 9,831 | 10,262 |
| 1994 | 404 | 10,229 | 10,633 |
| 1995 | 437 | 12,673 | 13,110 |
| 1996 | 453 | 13,319 | 13,772 |
| 1997 | 472 | 13,115 | 13,587 |
| 1998 | 458 | 12,773 | 13,231 |
| 1999 | 413 | 12,340 | 12,753 |
| 2000 | 415 | 12,043 | 12,458 |
| 2001 | 411 | 10,222 | 10,633 |
| 2002 | 376 | 9,206 | 9,582 |
| 2003 | 335 | 8,262 | 8,597 |

Source: National Roads Authority

TABLE 4.16

TABLE 4.17

Table 4.18 Road casualties classified by road user type, 2003

Persons

| Casualty type | Killed | Serious injury | Minor injury | Total |
|----------------------|------------|----------------|--------------|--------------|
| Pedestrians | 64 | 153 | 884 | 1,101 |
| Pedal cycle users | 11 | 20 | 272 | 303 |
| Motor cycle users | 55 | 141 | 631 | 827 |
| Car users | 172 | 588 | 4,564 | 5,324 |
| P.S.V. (large) users | – | 2 | 62 | 64 |
| Goods vehicle users | 27 | 81 | 453 | 561 |
| Other or unknown | 6 | 24 | 137 | 167 |
| Total | 335 | 1,009 | 7,003 | 8,347 |

Source: National Roads Authority

Table 4.19 Road casualties classified by age and sex, 2003

Persons

| Age group | Male | | Female | | Persons | |
|--------------|------------|--------------|-----------|--------------|--------------|--------------|
| | Killed | Injured | Killed | Injured | Total | % |
| 0-5 | 4 | 107 | 3 | 55 | 169 | 2.2 |
| 6-9 | 3 | 100 | 2 | 64 | 169 | 2.2 |
| 10-14 | 2 | 124 | 2 | 105 | 233 | 3.1 |
| 15-17 | 5 | 219 | 6 | 127 | 357 | 4.7 |
| 18-20 | 27 | 477 | 7 | 201 | 712 | 9.4 |
| 21-24 | 41 | 558 | 7 | 312 | 918 | 12.2 |
| 25-34 | 62 | 1,110 | 6 | 685 | 1,863 | 24.7 |
| 35-44 | 37 | 591 | 8 | 474 | 1,110 | 14.7 |
| 45-54 | 21 | 432 | 8 | 300 | 761 | 10.1 |
| 55-64 | 13 | 251 | 5 | 208 | 477 | 6.3 |
| 65 and over | 29 | 230 | 24 | 231 | 514 | 6.8 |
| Unknown | 2 | 138 | 1 | 120 | 261 | 3.5 |
| Total | 246 | 4,337 | 79 | 2,882 | 7,544 | 100.0 |

Source: National Roads Authority

TABLE 4.18

TABLE 4.19

Road deaths by age group, 2003

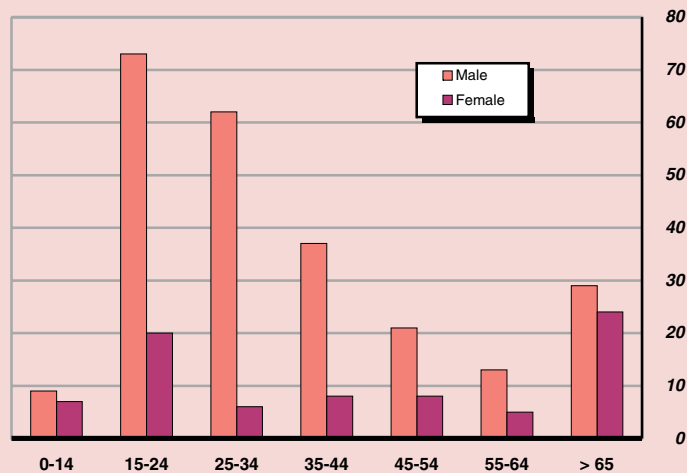


Table 4.20 Fatal accidents reported to the Health and Safety Authority

| Work sector | Number | | | | | | |
|-------------------------------------------------------------------------------------------------|-----------|-----------|-----------|-----------|-----------|-----------|-----------|
| | 1998 | 1999 | 2000 | 2001 | 2002 | 2003 | 2004 |
| Agricultural, hunting and forestry | 26 | 23 | 16 | 24 | 13 | 20 | 13 |
| Fishing (diving) | 6 | 2 | 7 | 2 | 3 | 0 | 4 |
| Mining and quarrying | 1 | 3 | 3 | 5 | 2 | 1 | 0 |
| Manufacturing | 4 | 8 | 9 | 3 | 7 | 6 | 3 |
| Electricity, gas and water supply | 0 | 0 | 1 | 0 | 2 | 2 | 0 |
| Construction | 22 | 18 | 18 | 18 | 21 | 17 | 15 |
| Wholesale and retail trade: repair of motor vehicles, motorcycles; personal and household goods | 1 | 1 | 3 | 1 | 1 | 5 | 4 |
| Hotels and restaurants | 1 | 0 | 0 | 0 | 0 | 0 | 0 |
| Transport, storage and communications | 4 | 8 | 4 | 5 | 8 | 8 | 6 |
| Financial intermediation | 0 | 0 | 0 | 0 | 0 | 0 | 1 |
| Real estate, renting and business activities | 1 | 2 | 3 | 3 | 1 | 0 | 0 |
| Public administration and defence; compulsory and social security | 1 | 2 | 5 | 2 | 2 | 4 | 0 |
| Education | 2 | 0 | 0 | 0 | 0 | 0 | 1 |
| Health and social work | 0 | 1 | 0 | 1 | 0 | 0 | 1 |
| Other community, social and personal service activities | 1 | 1 | 1 | 0 | 1 | 4 | 2 |
| Total | 70 | 69 | 70 | 64 | 61 | 67 | 50 |

Source: Health and Safety Authority – Annual Report

TABLE 4.20

Principal causes of fires attended by brigades

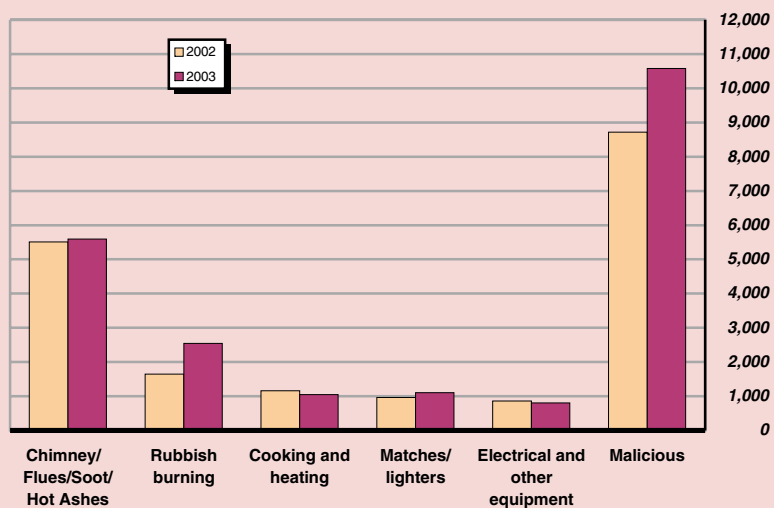


Table 4.21 Causes of fires attended by brigades

| Cause of fire | Number attended | | | | |
|---------------------------------|-----------------|---------------|---------------|---------------|---------------|
| | 1999 | 2000 | 2001 | 2002 | 2003 |
| Chimney/flues/soot/hot ashes | 7,527 | 6,671 | 6,817 | 5,509 | 5,591 |
| Matches/cigarette lighters | 345 | 217 | 581 | 966 | 1,108 |
| Rubbish burning | 1,545 | 1,443 | 1,413 | 1,649 | 2,545 |
| Cooking and heating | 1,255 | 1,107 | 1,101 | 1,156 | 1,044 |
| Electrical and other equipment | 882 | 1,014 | 1,290 | 858 | 804 |
| Electrical wiring installations | 437 | 474 | 440 | 406 | 511 |
| Malicious | 6,717 | 9,028 | 9,089 | 8,720 | 10,582 |
| Smoking materials | 230 | 191 | 240 | 256 | 412 |
| Using fuels to kindle fires | 35 | 30 | 32 | 60 | 41 |
| Explosions | 32 | 14 | 53 | 31 | 11 |
| Other suspected causes | 555 | 775 | 1,163 | 698 | 848 |
| Unknown causes | 10,650 | 10,474 | 10,601 | 7,790 | 8,340 |
| Total | 30,210 | 31,438 | 32,820 | 28,099 | 31,837 |

Source: Department of the Environment, Heritage and Local Government

Table 4.22 Deaths due to fire

| Year | Number |
|------|------------|
| | Fatalities |
| 1990 | 39 |
| 1991 | 52 |
| 1992 | 48 |
| 1993 | 51 |
| 1994 | 42 |
| 1995 | 38 |
| 1996 | 52 |
| 1997 | 51 |
| 1998 | 45 |
| 1999 | 51 |
| 2000 | 43 |
| 2001 | 63 |
| 2002 | 51 |
| 2003 | 37 |
| 2004 | 39 |

Source: Department of the Environment, Heritage and Local Government

Deaths due to fire

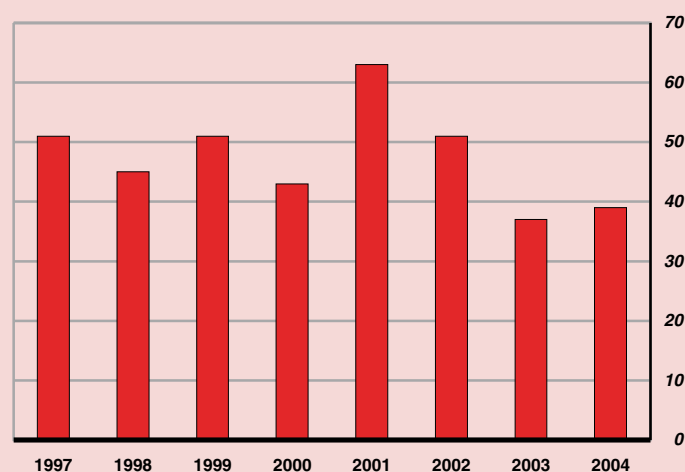


TABLE 4.21

TABLE 4.22

Table 4.23 Number on register of Dáil Electors

| Local Authorities | Number | | | | | | | |
|------------------------|------------------|------------------|------------------|------------------|------------------|------------------|------------------|------------------|
| | 1998 | 1999 | 2000 | 2001 | 2002 | 2003 | 2004 | 2005 |
| County Councils | 2,221,733 | 2,259,649 | 2,318,730 | 2,358,805 | 2,411,793 | 2,470,641 | 2,536,721 | 2,582,203 |
| Carlow | 33,297 | 34,169 | 35,179 | 36,054 | 37,008 | 37,651 | 38,143 | 39,439 |
| Cavan | 42,652 | 43,197 | 43,949 | 44,393 | 44,977 | 45,651 | 47,496 | 48,286 |
| Clare | 74,545 | 76,390 | 78,978 | 80,266 | 81,628 | 81,805 | 84,834 | 85,782 |
| Cork | 229,204 | 235,165 | 243,365 | 248,656 | 254,405 | 262,139 | 270,557 | 278,005 |
| Donegal | 103,542 | 105,538 | 106,941 | 108,147 | 110,720 | 113,860 | 116,966 | 119,529 |
| Dún Laoghaire-Rathdown | 148,189 | 148,212 | 148,047 | 148,350 | 149,252 | 150,028 | 150,499 | 152,107 |
| Fingal | 119,778 | 122,977 | 126,888 | 130,676 | 134,478 | 137,694 | 140,829 | 146,718 |
| South Dublin | 157,711 | 161,387 | 164,805 | 168,494 | 171,578 | 175,478 | 176,443 | 177,787 |
| Galway | 102,945 | 104,206 | 107,756 | 109,673 | 112,334 | 115,841 | 120,375 | 122,560 |
| Kerry | 100,712 | 101,776 | 102,870 | 104,096 | 105,520 | 107,002 | 108,687 | 109,335 |
| Kildare | 102,564 | 103,520 | 107,985 | 110,995 | 114,591 | 121,601 | 128,346 | 128,013 |
| Kilkenny | 56,234 | 57,402 | 58,821 | 59,759 | 61,080 | 62,955 | 64,570 | 65,793 |
| Laois | 39,359 | 40,922 | 42,367 | 43,246 | 44,610 | 45,749 | 47,000 | 49,680 |
| Leitrim | 21,200 | 21,332 | 21,945 | 21,914 | 22,246 | 22,688 | 23,331 | 23,672 |
| Limerick | 86,234 | 86,716 | 88,793 | 89,826 | 91,888 | 94,580 | 95,059 | 95,425 |
| Longford | 23,927 | 24,529 | 25,111 | 25,252 | 25,732 | 26,331 | 27,313 | 27,480 |
| Louth | 72,260 | 74,069 | 76,093 | 78,209 | 80,924 | 81,328 | 82,838 | 85,048 |
| Mayo | 87,118 | 88,041 | 90,533 | 91,104 | 92,656 | 95,229 | 98,278 | 99,627 |
| Meath | 92,326 | 94,860 | 98,346 | 102,329 | 107,894 | 110,270 | 117,254 | 119,667 |
| Monaghan | 40,581 | 41,237 | 41,378 | 41,601 | 42,110 | 43,356 | 44,173 | 45,077 |
| Offaly | 45,416 | 46,304 | 47,525 | 48,128 | 49,486 | 50,731 | 52,332 | 53,443 |
| Roscommon | 40,511 | 41,188 | 42,412 | 42,715 | 43,440 | 44,275 | 46,039 | 46,899 |
| Sligo | 43,712 | 43,876 | 45,087 | 45,441 | 46,150 | 46,090 | 47,493 | 47,730 |
| North Tipperary | 46,000 | 46,642 | 48,128 | 48,798 | 49,718 | 51,114 | 51,740 | 52,473 |
| South Tipperary | 58,292 | 58,599 | 60,162 | 60,676 | 61,508 | 62,709 | 62,265 | 64,394 |
| Waterford | 41,621 | 42,318 | 43,473 | 43,832 | 44,497 | 44,995 | 46,329 | 47,684 |
| Westmeath | 48,496 | 49,288 | 51,348 | 51,939 | 53,202 | 55,646 | 58,232 | 59,360 |
| Wexford | 84,694 | 85,635 | 88,195 | 91,049 | 93,280 | 95,983 | 99,830 | 101,124 |
| Wicklow | 78,613 | 80,154 | 82,250 | 83,187 | 84,881 | 87,862 | 89,470 | 90,066 |
| City Councils | 546,074 | 554,087 | 550,678 | 535,339 | 540,607 | 543,726 | 541,005 | 536,097 |
| Cork | 92,126 | 91,675 | 92,209 | 90,455 | 90,169 | 90,219 | 89,504 | 88,639 |
| Dublin | 347,772 | 355,807 | 351,054 | 337,538 | 342,409 | 344,019 | 341,813 | 340,357 |
| Galway | 38,643 | 39,111 | 39,726 | 40,088 | 40,414 | 41,947 | 42,325 | 41,898 |
| Limerick | 37,697 | 37,878 | 37,623 | 37,251 | 37,359 | 37,681 | 37,741 | 37,055 |
| Waterford | 29,836 | 29,616 | 30,066 | 30,007 | 30,256 | 29,860 | 29,622 | 28,148 |
| Total | 2,767,807 | 2,813,736 | 2,869,408 | 2,894,144 | 2,952,400 | 3,014,367 | 3,077,726 | 3,118,300 |

Source: Department of the Environment, Heritage and Local Government

TABLE 4.23

Table 4.24 Votes recorded at Dáil elections

| Date of election | Numbers entitled to vote | Votes recorded | Votes recorded as percentage of numbers entitled to vote |
|-------------------------|---------------------------------|-----------------------|-----------------------------------------------------------------|
| February 1948 | 1,800,210 | 1,336,628 | 74.2 |
| May 1951 | 1,785,144 | 1,343,616 | 75.3 |
| May 1954 | 1,763,828 | 1,347,932 | 76.4 |
| March 1957 | 1,738,278 | 1,238,559 | 71.3 |
| October 1961 | 1,670,860 | 1,179,738 | 70.6 |
| April 1965 | 1,683,019 | 1,264,415 | 75.1 |
| June 1969 | 1,735,388 | 1,334,963 | 76.9 |
| February 1973 | 1,783,604 | 1,366,474 | 76.6 |
| June 1977 | 2,118,606 | 1,616,770 | 76.3 |
| June 1981 | 2,275,450 | 1,734,379 | 76.2 |
| February 1982 | 2,275,450 | 1,679,500 | 73.8 |
| November 1982 | 2,335,153 | 1,701,385 | 72.9 |
| February 1987 | 2,445,515 | 1,793,406 | 73.3 |
| June 1989 | 2,448,810 | 1,677,592 | 68.5 |
| November 1992 | 2,557,036 | 1,751,351 | 68.5 |
| June 1997 | 2,741,262 | 1,806,932 | 65.9 |
| May 2002 | 3,002,173 | 1,878,609 | 62.6 |

Source: Department of the Environment, Heritage and Local Government

