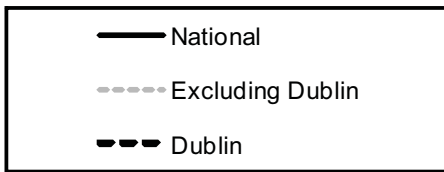
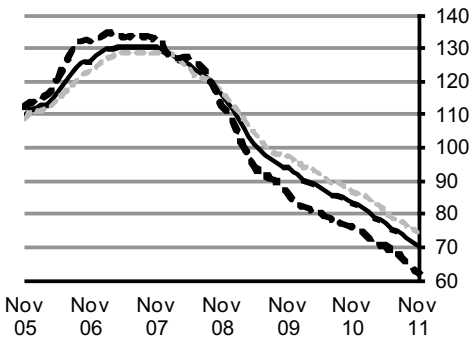




Residential Property Price Index November 2011

Residential Property Price Index



Residential Property Price Index

| | Price Index (Jan 2005 =100) | Monthly % change | Annual % change |
|----------|--------------------------------|---------------------|--------------------|
| Sep 2011 | 72.8 | -1.5% | -14.3% |
| Oct 2011 | 71.2 | -2.2% | -15.1% |
| Nov 2011 | 70.1 | -1.5% | -15.6% |

Residential Property Prices fall by 15.6% in the year to November

In the year to November, residential property prices at a national level, fell by 15.6%. This compares with an annual rate of decline of 15.1% in October and a decline of 11.5% recorded in the twelve months to November 2010. *See Table 1.*

Residential property prices fell by 1.5% in the month of November. This compares with a decline of 2.2% recorded in October and a decline of 1% in November of last year. *See Table 1.*

In Dublin residential property prices fell by 1.4% in November and were 17.6% lower than a year ago. Dublin house prices decreased by 2.4% in the month and were 18.1% lower compared to a year earlier. Dublin apartment prices were 16.1% lower when compared with the same month of 2010. *See Tables 6, 7 and 8.*

The price of residential properties in the Rest of Ireland (i.e. excluding Dublin) fell by 1.6% in November compared with a decline of 0.8% in the same month of last year. Prices were 14.5% lower than in November 2010. *See Table 4.*

Overall Decline

House prices in Dublin are 52% lower than at their highest level in early 2007. Apartments in Dublin are 58% lower than they were in February 2007. Residential property prices in Dublin are 54% lower than at their highest level in February 2007. The fall in the price of residential properties in the Rest of Ireland is somewhat lower at 42%. Overall, the national index is 46% lower than its highest level in 2007. *See Tables 7, 8, 6, 4 and 1.*

For more information contact Niall O'Hanlon at 021 453 5207 or Paul J Crowley at 021 453 5501.

Published by the Central Statistics Office, Ireland.

Ardee Road
Dublin 6
Ireland

Skehard Road
Cork
Ireland

LoCall: 1890 313 414 (ROI)
0808 2347 581 (UK/NI)

Tel: +353 1 498 4000
Fax: +353 1 498 4229

Tel: +353 21 453 5000
Fax: +353 21 453 5555

Both offices may be contacted through any of these telephone numbers.

CSO on the Web: www.cso.ie
and go to
Economy: Prices

Director General: Gerard O'Hanlon

Enquiries:

General queries Information Section, 021 453 5021
Email: information@cso.ie

© Central Statistics Office
The contents of this release may be quoted provided the source is given clearly and accurately. Reproduction for own or internal use is permitted.

Table 1 National - all residential properties

| Period | | RPPI current base Jan. 2005 = 100 | Percentage changes | | |
|-------------|-----------|--------------------------------------|--------------------|----------|-----------|
| | | | 1 month | 3 months | 12 months |
| | | | % | % | % |
| 2005 | Year | 104.6 | | | |
| 2006 | Year | 119.8 | | | 14.5 |
| 2007 | Year | 130.0 | | | 8.5 |
| 2008 | Year | 122.3 | | | -5.9 |
| 2009 | Year | 99.9 | | | -18.3 |
| 2010 | Year | 86.8 | | | -13.1 |
| 2005 | January | 100.0 | | | |
| | February | 100.4 | 0.4 | | |
| | March | 100.6 | 0.2 | | |
| | April | 101.3 | 0.7 | 1.3 | |
| | May | 102.0 | 0.7 | 1.6 | |
| | June | 102.9 | 0.9 | 2.3 | |
| | July | 104.3 | 1.4 | 3.0 | |
| | August | 105.9 | 1.5 | 3.8 | |
| | September | 107.2 | 1.2 | 4.2 | |
| | October | 109.0 | 1.7 | 4.5 | |
| | November | 110.0 | 0.9 | 3.9 | |
| | December | 111.5 | 1.4 | 4.0 | |
| 2006 | January | 111.8 | 0.3 | 2.6 | 11.8 |
| | February | 112.6 | 0.7 | 2.4 | 12.2 |
| | March | 113.1 | 0.4 | 1.4 | 12.4 |
| | April | 114.6 | 1.3 | 2.5 | 13.1 |
| | May | 116.8 | 1.9 | 3.7 | 14.5 |
| | June | 119.0 | 1.9 | 5.2 | 15.6 |
| | July | 121.3 | 1.9 | 5.8 | 16.3 |
| | August | 123.5 | 1.8 | 5.7 | 16.6 |
| | September | 125.1 | 1.3 | 5.1 | 16.7 |
| | October | 126.0 | 0.7 | 3.9 | 15.6 |
| | November | 126.1 | 0.1 | 2.1 | 14.6 |
| | December | 127.3 | 1.0 | 1.8 | 14.2 |
| 2007 | January | 128.4 | 0.9 | 1.9 | 14.8 |
| | February | 129.6 | 0.9 | 2.8 | 15.1 |
| | March | 129.9 | 0.2 | 2.0 | 14.9 |
| | April | 130.3 | 0.3 | 1.5 | 13.7 |
| | May | 130.2 | -0.1 | 0.5 | 11.5 |
| | June | 130.2 | 0.0 | 0.2 | 9.4 |
| | July | 130.2 | 0.0 | -0.1 | 7.3 |
| | August | 130.4 | 0.2 | 0.2 | 5.6 |
| | September | 130.5 | 0.1 | 0.2 | 4.3 |
| | October | 130.1 | -0.3 | -0.1 | 3.3 |
| | November | 130.1 | 0.0 | -0.2 | 3.2 |
| | December | 129.5 | -0.5 | -0.8 | 1.7 |

Table 1 National - all residential properties (continued)

| Period | RPPI current base Jan. 2005 = 100 | Percentage changes | | | |
|-------------|--------------------------------------|--------------------|----------|-----------|-------|
| | | 1 month | 3 months | 12 months | |
| | | % | % | % | |
| 2008 | January | 128.7 | -0.6 | -1.1 | 0.2 |
| | February | 127.6 | -0.9 | -1.9 | -1.5 |
| | March | 126.6 | -0.8 | -2.2 | -2.5 |
| | April | 125.7 | -0.7 | -2.3 | -3.5 |
| | May | 124.6 | -0.9 | -2.4 | -4.3 |
| | June | 123.4 | -1.0 | -2.5 | -5.2 |
| | July | 122.5 | -0.7 | -2.5 | -5.9 |
| | August | 121.5 | -0.8 | -2.5 | -6.8 |
| | September | 120.1 | -1.2 | -2.7 | -8.0 |
| | October | 117.7 | -2.0 | -3.9 | -9.5 |
| | November | 115.7 | -1.7 | -4.8 | -11.1 |
| | December | 113.5 | -1.9 | -5.5 | -12.4 |
| 2009 | January | 111.3 | -1.9 | -5.4 | -13.5 |
| | February | 108.5 | -2.5 | -6.2 | -15.0 |
| | March | 105.6 | -2.7 | -7.0 | -16.6 |
| | April | 103.3 | -2.2 | -7.2 | -17.8 |
| | May | 101.1 | -2.1 | -6.8 | -18.9 |
| | June | 99.2 | -1.9 | -6.1 | -19.6 |
| | July | 97.5 | -1.7 | -5.6 | -20.4 |
| | August | 96.2 | -1.3 | -4.8 | -20.8 |
| | September | 95.5 | -0.7 | -3.7 | -20.5 |
| | October | 94.4 | -1.2 | -3.2 | -19.8 |
| | November | 93.9 | -0.5 | -2.4 | -18.8 |
| | December | 92.4 | -1.6 | -3.2 | -18.6 |
| 2010 | January | 91.6 | -0.9 | -3.0 | -17.7 |
| | February | 90.1 | -1.6 | -4.0 | -17.0 |
| | March | 89.7 | -0.4 | -2.9 | -15.1 |
| | April | 89.1 | -0.7 | -2.7 | -13.7 |
| | May | 88.0 | -1.2 | -2.3 | -13.0 |
| | June | 86.9 | -1.2 | -3.1 | -12.4 |
| | July | 85.8 | -1.3 | -3.7 | -12.0 |
| | August | 85.8 | 0.0 | -2.5 | -10.8 |
| | September | 84.9 | -1.0 | -2.3 | -11.1 |
| | October | 83.9 | -1.2 | -2.2 | -11.1 |
| | November | 83.1 | -1.0 | -3.1 | -11.5 |
| | December | 82.7 | -0.5 | -2.6 | -10.5 |
| 2011 | January | 81.8 | -1.1 | -2.5 | -10.7 |
| | February | 80.4 | -1.7 | -3.2 | -10.8 |
| | March | 79.0 | -1.7 | -4.5 | -11.9 |
| | April | 78.2 | -1.0 | -4.4 | -12.2 |
| | May | 77.3 | -1.2 | -3.9 | -12.2 |
| | June | 75.7 | -2.1 | -4.2 | -12.9 |
| | July | 75.1 | -0.8 | -4.0 | -12.5 |
| | August | 73.9 | -1.6 | -4.4 | -13.9 |
| | September | 72.8 | -1.5 | -3.8 | -14.3 |
| | October | 71.2 | -2.2 | -5.2 | -15.1 |
| | November | 70.1 | -1.5 | -5.1 | -15.6 |

Table 2 National - houses

| Period | | RPPI current base Jan. 2005 = 100 | Percentage changes | | |
|-------------|-----------|--------------------------------------|--------------------|----------|-----------|
| | | | 1 month | 3 months | 12 months |
| | | | % | % | % |
| 2005 | Year | 105.0 | | | |
| 2006 | Year | 120.5 | | | 14.8 |
| 2007 | Year | 131.2 | | | 8.9 |
| 2008 | Year | 124.0 | | | -5.5 |
| 2009 | Year | 102.7 | | | -17.2 |
| 2010 | Year | 90.1 | | | -12.3 |
| 2005 | January | 100.0 | | | |
| | February | 100.5 | 0.5 | | |
| | March | 100.8 | 0.3 | | |
| | April | 101.6 | 0.8 | 1.6 | |
| | May | 102.3 | 0.7 | 1.8 | |
| | June | 103.4 | 1.1 | 2.6 | |
| | July | 105.0 | 1.5 | 3.3 | |
| | August | 106.6 | 1.5 | 4.2 | |
| | September | 107.8 | 1.1 | 4.3 | |
| | October | 109.5 | 1.6 | 4.3 | |
| | November | 110.5 | 0.9 | 3.7 | |
| | December | 112.0 | 1.4 | 3.9 | |
| 2006 | January | 112.4 | 0.4 | 2.6 | 12.4 |
| | February | 113.1 | 0.6 | 2.4 | 12.5 |
| | March | 113.8 | 0.6 | 1.6 | 12.9 |
| | April | 115.2 | 1.2 | 2.5 | 13.4 |
| | May | 117.4 | 1.9 | 3.8 | 14.8 |
| | June | 119.7 | 2.0 | 5.2 | 15.8 |
| | July | 122.2 | 2.1 | 6.1 | 16.4 |
| | August | 124.4 | 1.8 | 6.0 | 16.7 |
| | September | 125.9 | 1.2 | 5.2 | 16.8 |
| | October | 126.8 | 0.7 | 3.8 | 15.8 |
| | November | 126.9 | 0.1 | 2.0 | 14.8 |
| | December | 128.3 | 1.1 | 1.9 | 14.6 |
| 2007 | January | 129.3 | 0.8 | 2.0 | 15.0 |
| | February | 130.5 | 0.9 | 2.8 | 15.4 |
| | March | 130.9 | 0.3 | 2.0 | 15.0 |
| | April | 131.7 | 0.6 | 1.9 | 14.3 |
| | May | 131.5 | -0.2 | 0.8 | 12.0 |
| | June | 131.4 | -0.1 | 0.4 | 9.8 |
| | July | 131.4 | 0.0 | -0.2 | 7.5 |
| | August | 131.7 | 0.2 | 0.2 | 5.9 |
| | September | 132.0 | 0.2 | 0.5 | 4.8 |
| | October | 131.4 | -0.5 | 0.0 | 3.6 |
| | November | 131.6 | 0.2 | -0.1 | 3.7 |
| | December | 130.8 | -0.6 | -0.9 | 1.9 |

Table 2 National - houses (continued)

| Period | RPII current base Jan. 2005 = 100 | Percentage changes | | | |
|-------------|--------------------------------------|--------------------|----------|-----------|-------|
| | | 1 month | 3 months | 12 months | |
| | | % | % | % | |
| 2008 | January | 130.1 | -0.5 | -1.0 | 0.6 |
| | February | 128.8 | -1.0 | -2.1 | -1.3 |
| | March | 127.7 | -0.9 | -2.4 | -2.4 |
| | April | 126.9 | -0.6 | -2.5 | -3.6 |
| | May | 126.0 | -0.7 | -2.2 | -4.2 |
| | June | 125.1 | -0.7 | -2.0 | -4.8 |
| | July | 124.3 | -0.6 | -2.0 | -5.4 |
| | August | 123.2 | -0.9 | -2.2 | -6.5 |
| | September | 121.9 | -1.1 | -2.6 | -7.7 |
| | October | 120.0 | -1.6 | -3.5 | -8.7 |
| | November | 118.2 | -1.5 | -4.1 | -10.2 |
| | December | 116.2 | -1.7 | -4.7 | -11.2 |
| 2009 | January | 113.8 | -2.1 | -5.2 | -12.5 |
| | February | 111.0 | -2.5 | -6.1 | -13.8 |
| | March | 108.2 | -2.5 | -6.9 | -15.3 |
| | April | 106.0 | -2.0 | -6.9 | -16.5 |
| | May | 103.6 | -2.3 | -6.7 | -17.8 |
| | June | 101.9 | -1.6 | -5.8 | -18.5 |
| | July | 100.1 | -1.8 | -5.6 | -19.5 |
| | August | 99.0 | -1.1 | -4.4 | -19.6 |
| | September | 98.6 | -0.4 | -3.2 | -19.1 |
| | October | 97.7 | -0.9 | -2.4 | -18.6 |
| | November | 97.2 | -0.5 | -1.8 | -17.8 |
| | December | 95.4 | -1.9 | -3.2 | -17.9 |
| 2010 | January | 94.7 | -0.7 | -3.1 | -16.8 |
| | February | 93.3 | -1.5 | -4.0 | -15.9 |
| | March | 92.9 | -0.4 | -2.6 | -14.1 |
| | April | 92.4 | -0.5 | -2.4 | -12.8 |
| | May | 91.1 | -1.4 | -2.4 | -12.1 |
| | June | 90.0 | -1.2 | -3.1 | -11.7 |
| | July | 89.0 | -1.1 | -3.7 | -11.1 |
| | August | 89.1 | 0.1 | -2.2 | -10.0 |
| | September | 88.3 | -0.9 | -1.9 | -10.4 |
| | October | 87.3 | -1.1 | -1.9 | -10.6 |
| | November | 86.5 | -0.9 | -2.9 | -11.0 |
| | December | 86.0 | -0.6 | -2.6 | -9.9 |
| 2011 | January | 84.9 | -1.3 | -2.7 | -10.3 |
| | February | 83.5 | -1.6 | -3.5 | -10.5 |
| | March | 82.2 | -1.6 | -4.4 | -11.5 |
| | April | 81.3 | -1.1 | -4.2 | -12.0 |
| | May | 80.4 | -1.1 | -3.7 | -11.7 |
| | June | 78.6 | -2.2 | -4.4 | -12.7 |
| | July | 78.1 | -0.6 | -3.9 | -12.2 |
| | August | 77.0 | -1.4 | -4.2 | -13.6 |
| | September | 76.0 | -1.3 | -3.3 | -13.9 |
| | October | 74.3 | -2.2 | -4.9 | -14.9 |
| | November | 72.9 | -1.9 | -5.3 | -15.7 |

Table 3 National - apartments

| Period | | RPPI current base Jan. 2005 = 100 | Percentage changes | | |
|-------------|-----------|--------------------------------------|--------------------|----------|-----------|
| | | | 1 month | 3 months | 12 months |
| | | | % | % | % |
| 2005 | Year | 102.1 | | | |
| 2006 | Year | 115.1 | | | 12.7 |
| 2007 | Year | 122.1 | | | 6.1 |
| 2008 | Year | 112.4 | | | -8.0 |
| 2009 | Year | 85.0 | | | -24.4 |
| 2010 | Year | 69.1 | | | -18.7 |
| 2005 | January | 100.0 | | | |
| | February | 100.1 | 0.1 | | |
| | March | 99.9 | -0.2 | | |
| | April | 99.7 | -0.2 | -0.3 | |
| | May | 99.7 | 0.0 | -0.4 | |
| | June | 99.6 | -0.1 | -0.3 | |
| | July | 100.0 | 0.4 | 0.3 | |
| | August | 101.5 | 1.5 | 1.8 | |
| | September | 103.8 | 2.3 | 4.2 | |
| | October | 106.2 | 2.3 | 6.2 | |
| | November | 106.9 | 0.7 | 5.3 | |
| | December | 108.3 | 1.3 | 4.3 | |
| 2006 | January | 108.4 | 0.1 | 2.1 | 8.4 |
| | February | 109.1 | 0.6 | 2.1 | 9.0 |
| | March | 109.0 | -0.1 | 0.6 | 9.1 |
| | April | 111.0 | 1.8 | 2.4 | 11.3 |
| | May | 112.9 | 1.7 | 3.5 | 13.2 |
| | June | 114.7 | 1.6 | 5.2 | 15.2 |
| | July | 115.7 | 0.9 | 4.2 | 15.7 |
| | August | 117.8 | 1.8 | 4.3 | 16.1 |
| | September | 119.9 | 1.8 | 4.5 | 15.5 |
| | October | 120.9 | 0.8 | 4.5 | 13.8 |
| | November | 120.7 | -0.2 | 2.5 | 12.9 |
| | December | 120.8 | 0.1 | 0.8 | 11.5 |
| 2007 | January | 122.5 | 1.4 | 1.3 | 13.0 |
| | February | 123.9 | 1.1 | 2.7 | 13.6 |
| | March | 123.2 | -0.6 | 2.0 | 13.0 |
| | April | 121.6 | -1.3 | -0.7 | 9.5 |
| | May | 121.7 | 0.1 | -1.8 | 7.8 |
| | June | 122.5 | 0.7 | -0.6 | 6.8 |
| | July | 123.0 | 0.4 | 1.2 | 6.3 |
| | August | 122.1 | -0.7 | 0.3 | 3.7 |
| | September | 121.5 | -0.5 | -0.8 | 1.3 |
| | October | 121.5 | 0.0 | -1.2 | 0.5 |
| | November | 120.7 | -0.7 | -1.1 | 0.0 |
| | December | 121.3 | 0.5 | -0.2 | 0.4 |

Table 3 National - apartments (continued)

| Period | RPPI current base Jan. 2005 = 100 | Percentage changes | | | |
|-------------|--------------------------------------|--------------------|----------|-----------|-------|
| | | 1 month | 3 months | 12 months | |
| | | % | % | % | |
| 2008 | January | 120.3 | -0.8 | -1.0 | -1.8 |
| | February | 120.1 | -0.2 | -0.5 | -3.1 |
| | March | 119.5 | -0.5 | -1.5 | -3.0 |
| | April | 118.5 | -0.8 | -1.5 | -2.5 |
| | May | 116.0 | -2.1 | -3.4 | -4.7 |
| | June | 113.5 | -2.2 | -5.0 | -7.3 |
| | July | 112.4 | -1.0 | -5.1 | -8.6 |
| | August | 111.7 | -0.6 | -3.7 | -8.5 |
| | September | 109.9 | -1.6 | -3.2 | -9.5 |
| | October | 105.3 | -4.2 | -6.3 | -13.3 |
| | November | 102.1 | -3.0 | -8.6 | -15.4 |
| | December | 99.3 | -2.7 | -9.6 | -18.1 |
| 2009 | January | 97.8 | -1.5 | -7.1 | -18.7 |
| | February | 94.8 | -3.1 | -7.1 | -21.1 |
| | March | 91.9 | -3.1 | -7.5 | -23.1 |
| | April | 89.0 | -3.2 | -9.0 | -24.9 |
| | May | 87.4 | -1.8 | -7.8 | -24.7 |
| | June | 85.0 | -2.7 | -7.5 | -25.1 |
| | July | 83.9 | -1.3 | -5.7 | -25.4 |
| | August | 81.4 | -3.0 | -6.9 | -27.1 |
| | September | 79.0 | -2.9 | -7.1 | -28.1 |
| | October | 77.2 | -2.3 | -8.0 | -26.7 |
| | November | 76.6 | -0.8 | -5.9 | -25.0 |
| | December | 76.0 | -0.8 | -3.8 | -23.5 |
| 2010 | January | 75.1 | -1.2 | -2.7 | -23.2 |
| | February | 73.1 | -2.7 | -4.6 | -22.9 |
| | March | 71.9 | -1.6 | -5.4 | -21.8 |
| | April | 71.3 | -0.8 | -5.1 | -19.9 |
| | May | 71.2 | -0.1 | -2.6 | -18.5 |
| | June | 70.7 | -0.7 | -1.7 | -16.8 |
| | July | 68.3 | -3.4 | -4.2 | -18.6 |
| | August | 67.2 | -1.6 | -5.6 | -17.4 |
| | September | 65.7 | -2.2 | -7.1 | -16.8 |
| | October | 65.1 | -0.9 | -4.7 | -15.7 |
| | November | 64.5 | -0.9 | -4.0 | -15.8 |
| | December | 64.7 | 0.3 | -1.5 | -14.9 |
| 2011 | January | 64.7 | 0.0 | -0.6 | -13.8 |
| | February | 63.5 | -1.9 | -1.6 | -13.1 |
| | March | 61.0 | -3.9 | -5.7 | -15.2 |
| | April | 60.4 | -1.0 | -6.6 | -15.3 |
| | May | 60.0 | -0.7 | -5.5 | -15.7 |
| | June | 59.4 | -1.0 | -2.6 | -16.0 |
| | July | 57.6 | -3.0 | -4.6 | -15.7 |
| | August | 54.9 | -4.7 | -8.5 | -18.3 |
| | September | 53.2 | -3.1 | -10.4 | -19.0 |
| | October | 52.2 | -1.9 | -9.4 | -19.8 |
| | November | 53.6 | 2.7 | -2.4 | -16.9 |

Table 4 National excluding Dublin - all residential properties

| Period | | RPPI current base Jan. 2005 = 100 | Percentage changes | | |
|-------------|-----------|--------------------------------------|--------------------|----------|-----------|
| | | | 1 month | 3 months | 12 months |
| | | | % | % | % |
| 2005 | Year | 104.0 | | | |
| 2006 | Year | 117.2 | | | 12.6 |
| 2007 | Year | 128.0 | | | 9.3 |
| 2008 | Year | 122.1 | | | -4.7 |
| 2009 | Year | 102.8 | | | -15.8 |
| 2010 | Year | 90.5 | | | -11.9 |
| 2005 | January | 100.0 | | | |
| | February | 100.1 | 0.1 | | |
| | March | 100.3 | 0.2 | | |
| | April | 100.9 | 0.6 | 0.9 | |
| | May | 101.5 | 0.6 | 1.4 | |
| | June | 102.6 | 1.1 | 2.3 | |
| | July | 104.0 | 1.4 | 3.1 | |
| | August | 105.6 | 1.5 | 4.0 | |
| | September | 106.5 | 0.9 | 3.8 | |
| | October | 107.9 | 1.3 | 3.8 | |
| | November | 108.6 | 0.6 | 2.8 | |
| | December | 110.3 | 1.6 | 3.6 | |
| 2006 | January | 110.7 | 0.4 | 2.6 | 10.7 |
| | February | 111.2 | 0.5 | 2.4 | 11.1 |
| | March | 111.6 | 0.4 | 1.2 | 11.3 |
| | April | 112.7 | 1.0 | 1.8 | 11.7 |
| | May | 114.7 | 1.8 | 3.1 | 13.0 |
| | June | 116.4 | 1.5 | 4.3 | 13.5 |
| | July | 118.1 | 1.5 | 4.8 | 13.6 |
| | August | 119.8 | 1.4 | 4.4 | 13.4 |
| | September | 121.5 | 1.4 | 4.4 | 14.1 |
| | October | 122.5 | 0.8 | 3.7 | 13.5 |
| | November | 122.9 | 0.3 | 2.6 | 13.2 |
| | December | 124.0 | 0.9 | 2.1 | 12.4 |
| 2007 | January | 125.6 | 1.3 | 2.5 | 13.5 |
| | February | 126.9 | 1.0 | 3.3 | 14.1 |
| | March | 127.7 | 0.6 | 3.0 | 14.4 |
| | April | 128.1 | 0.3 | 2.0 | 13.7 |
| | May | 128.7 | 0.5 | 1.4 | 12.2 |
| | June | 128.4 | -0.2 | 0.5 | 10.3 |
| | July | 128.5 | 0.1 | 0.3 | 8.8 |
| | August | 128.5 | 0.0 | -0.2 | 7.3 |
| | September | 128.8 | 0.2 | 0.3 | 6.0 |
| | October | 128.3 | -0.4 | -0.2 | 4.7 |
| | November | 128.6 | 0.2 | 0.1 | 4.6 |
| | December | 128.4 | -0.2 | -0.3 | 3.5 |

Table 4 National excluding Dublin - all residential properties (continued)

| Period | RPPI current base Jan. 2005 = 100 | Percentage changes | | | |
|-------------|--------------------------------------|--------------------|----------|-----------|-------|
| | | 1 month | 3 months | 12 months | |
| | | % | % | % | |
| 2008 | January | 128.5 | 0.1 | 0.2 | 2.3 |
| | February | 127.3 | -0.9 | -1.0 | 0.3 |
| | March | 126.3 | -0.8 | -1.6 | -1.1 |
| | April | 124.8 | -1.2 | -2.9 | -2.6 |
| | May | 123.3 | -1.2 | -3.1 | -4.2 |
| | June | 122.1 | -1.0 | -3.3 | -4.9 |
| | July | 121.4 | -0.6 | -2.7 | -5.5 |
| | August | 120.8 | -0.5 | -2.0 | -6.0 |
| | September | 120.2 | -0.5 | -1.6 | -6.7 |
| | October | 118.4 | -1.5 | -2.5 | -7.7 |
| | November | 117.0 | -1.2 | -3.1 | -9.0 |
| | December | 114.7 | -2.0 | -4.6 | -10.7 |
| 2009 | January | 112.7 | -1.7 | -4.8 | -12.3 |
| | February | 110.4 | -2.0 | -5.6 | -13.3 |
| | March | 108.2 | -2.0 | -5.7 | -14.3 |
| | April | 106.6 | -1.5 | -5.4 | -14.6 |
| | May | 104.4 | -2.1 | -5.4 | -15.3 |
| | June | 102.4 | -1.9 | -5.4 | -16.1 |
| | July | 100.4 | -2.0 | -5.8 | -17.3 |
| | August | 98.7 | -1.7 | -5.5 | -18.3 |
| | September | 98.1 | -0.6 | -4.2 | -18.4 |
| | October | 97.3 | -0.8 | -3.1 | -17.8 |
| | November | 97.6 | 0.3 | -1.1 | -16.6 |
| | December | 96.2 | -1.4 | -1.9 | -16.1 |
| 2010 | January | 95.9 | -0.3 | -1.4 | -14.9 |
| | February | 94.1 | -1.9 | -3.6 | -14.8 |
| | March | 93.4 | -0.7 | -2.9 | -13.7 |
| | April | 92.9 | -0.5 | -3.1 | -12.9 |
| | May | 91.8 | -1.2 | -2.4 | -12.1 |
| | June | 90.6 | -1.3 | -3.0 | -11.5 |
| | July | 89.2 | -1.5 | -4.0 | -11.2 |
| | August | 89.4 | 0.2 | -2.6 | -9.4 |
| | September | 88.5 | -1.0 | -2.3 | -9.8 |
| | October | 87.4 | -1.2 | -2.0 | -10.2 |
| | November | 86.7 | -0.8 | -3.0 | -11.2 |
| | December | 86.3 | -0.5 | -2.5 | -10.3 |
| 2011 | January | 85.7 | -0.7 | -1.9 | -10.6 |
| | February | 84.4 | -1.5 | -2.7 | -10.3 |
| | March | 83.1 | -1.5 | -3.7 | -11.0 |
| | April | 82.0 | -1.3 | -4.3 | -11.7 |
| | May | 80.3 | -2.1 | -4.9 | -12.5 |
| | June | 78.8 | -1.9 | -5.2 | -13.0 |
| | July | 77.8 | -1.3 | -5.1 | -12.8 |
| | August | 77.6 | -0.3 | -3.4 | -13.2 |
| | September | 76.8 | -1.0 | -2.5 | -13.2 |
| | October | 75.3 | -2.0 | -3.2 | -13.8 |
| | November | 74.1 | -1.6 | -4.5 | -14.5 |

Table 5 National excluding Dublin - houses

| Period | | RPPI current base Jan. 2005 = 100 | Percentage changes | | |
|-------------|-----------|--------------------------------------|--------------------|----------|-----------|
| | | | 1 month | 3 months | 12 months |
| | | | % | % | % |
| 2005 | Year | 104.4 | | | |
| 2006 | Year | 117.7 | | | 12.7 |
| 2007 | Year | 128.8 | | | 9.4 |
| 2008 | Year | 122.9 | | | -4.5 |
| 2009 | Year | 104.1 | | | -15.3 |
| 2010 | Year | 92.1 | | | -11.5 |
| 2005 | January | 100.0 | | | |
| | February | 100.3 | 0.3 | | |
| | March | 100.6 | 0.3 | | |
| | April | 101.2 | 0.6 | 1.2 | |
| | May | 101.9 | 0.7 | 1.6 | |
| | June | 103.1 | 1.2 | 2.5 | |
| | July | 104.7 | 1.6 | 3.5 | |
| | August | 106.2 | 1.4 | 4.2 | |
| | September | 107.1 | 0.8 | 3.9 | |
| | October | 108.3 | 1.1 | 3.4 | |
| | November | 109.1 | 0.7 | 2.7 | |
| | December | 110.7 | 1.5 | 3.4 | |
| 2006 | January | 111.1 | 0.4 | 2.6 | 11.1 |
| | February | 111.6 | 0.5 | 2.3 | 11.3 |
| | March | 112.0 | 0.4 | 1.2 | 11.3 |
| | April | 113.2 | 1.1 | 1.9 | 11.9 |
| | May | 115.3 | 1.9 | 3.3 | 13.2 |
| | June | 117.0 | 1.5 | 4.5 | 13.5 |
| | July | 118.7 | 1.5 | 4.9 | 13.4 |
| | August | 120.4 | 1.4 | 4.4 | 13.4 |
| | September | 122.1 | 1.4 | 4.4 | 14.0 |
| | October | 123.0 | 0.7 | 3.6 | 13.6 |
| | November | 123.4 | 0.3 | 2.5 | 13.1 |
| | December | 124.7 | 1.1 | 2.1 | 12.6 |
| 2007 | January | 126.4 | 1.4 | 2.8 | 13.8 |
| | February | 127.6 | 0.9 | 3.4 | 14.3 |
| | March | 128.4 | 0.6 | 3.0 | 14.6 |
| | April | 128.9 | 0.4 | 2.0 | 13.9 |
| | May | 129.4 | 0.4 | 1.4 | 12.2 |
| | June | 129.1 | -0.2 | 0.5 | 10.3 |
| | July | 129.2 | 0.1 | 0.2 | 8.8 |
| | August | 129.3 | 0.1 | -0.1 | 7.4 |
| | September | 129.7 | 0.3 | 0.5 | 6.2 |
| | October | 129.0 | -0.5 | -0.2 | 4.9 |
| | November | 129.3 | 0.2 | 0.0 | 4.8 |
| | December | 129.1 | -0.2 | -0.5 | 3.5 |

Table 5 National excluding Dublin - houses (continued)

| Period | RPPI current base Jan. 2005 = 100 | Percentage changes | | | |
|-------------|--------------------------------------|--------------------|----------|-----------|-------|
| | | 1 month | 3 months | 12 months | |
| | | % | % | % | |
| 2008 | January | 129.5 | 0.3 | 0.4 | 2.5 |
| | February | 128.4 | -0.8 | -0.7 | 0.6 |
| | March | 127.3 | -0.9 | -1.4 | -0.9 |
| | April | 125.6 | -1.3 | -3.0 | -2.6 |
| | May | 124.2 | -1.1 | -3.3 | -4.0 |
| | June | 122.9 | -1.0 | -3.5 | -4.8 |
| | July | 122.2 | -0.6 | -2.7 | -5.4 |
| | August | 121.5 | -0.6 | -2.2 | -6.0 |
| | September | 120.9 | -0.5 | -1.6 | -6.8 |
| | October | 119.2 | -1.4 | -2.5 | -7.6 |
| | November | 117.9 | -1.1 | -3.0 | -8.8 |
| | December | 115.7 | -1.9 | -4.3 | -10.4 |
| 2009 | January | 113.8 | -1.6 | -4.5 | -12.1 |
| | February | 111.4 | -2.1 | -5.5 | -13.2 |
| | March | 109.3 | -1.9 | -5.5 | -14.1 |
| | April | 107.7 | -1.5 | -5.4 | -14.3 |
| | May | 105.6 | -1.9 | -5.2 | -15.0 |
| | June | 103.9 | -1.6 | -4.9 | -15.5 |
| | July | 101.7 | -2.1 | -5.6 | -16.8 |
| | August | 100.1 | -1.6 | -5.2 | -17.6 |
| | September | 99.6 | -0.5 | -4.1 | -17.6 |
| | October | 98.9 | -0.7 | -2.8 | -17.0 |
| | November | 99.2 | 0.3 | -0.9 | -15.9 |
| | December | 97.8 | -1.4 | -1.8 | -15.5 |
| 2010 | January | 97.5 | -0.3 | -1.4 | -14.3 |
| | February | 95.6 | -1.9 | -3.6 | -14.2 |
| | March | 95.0 | -0.6 | -2.9 | -13.1 |
| | April | 94.5 | -0.5 | -3.1 | -12.3 |
| | May | 93.3 | -1.3 | -2.4 | -11.6 |
| | June | 92.1 | -1.3 | -3.1 | -11.4 |
| | July | 90.7 | -1.5 | -4.0 | -10.8 |
| | August | 90.9 | 0.2 | -2.6 | -9.2 |
| | September | 90.1 | -0.9 | -2.2 | -9.5 |
| | October | 89.0 | -1.2 | -1.9 | -10.0 |
| | November | 88.3 | -0.8 | -2.9 | -11.0 |
| | December | 87.9 | -0.5 | -2.4 | -10.1 |
| 2011 | January | 87.1 | -0.9 | -2.1 | -10.7 |
| | February | 86.0 | -1.3 | -2.6 | -10.0 |
| | March | 84.7 | -1.5 | -3.6 | -10.8 |
| | April | 83.5 | -1.4 | -4.1 | -11.6 |
| | May | 81.9 | -1.9 | -4.8 | -12.2 |
| | June | 80.3 | -2.0 | -5.2 | -12.8 |
| | July | 79.3 | -1.2 | -5.0 | -12.6 |
| | August | 79.1 | -0.3 | -3.4 | -13.0 |
| | September | 78.2 | -1.1 | -2.6 | -13.2 |
| | October | 76.8 | -1.8 | -3.2 | -13.7 |
| | November | 75.6 | -1.6 | -4.4 | -14.4 |

Table 6 Dublin - all residential properties

| Period | | RPPI current base Jan. 2005 = 100 | Percentage changes | | |
|-------------|-----------|--------------------------------------|--------------------|----------|-----------|
| | | | 1 month | 3 months | 12 months |
| | | | % | % | % |
| 2005 | Year | 105.7 | | | |
| 2006 | Year | 124.4 | | | 17.8 |
| 2007 | Year | 133.3 | | | 7.1 |
| 2008 | Year | 122.4 | | | -8.2 |
| 2009 | Year | 93.8 | | | -23.4 |
| 2010 | Year | 78.9 | | | -15.8 |
| 2005 | January | 100.0 | | | |
| | February | 101.1 | 1.1 | | |
| | March | 101.2 | 0.1 | | |
| | April | 102.2 | 1.0 | 2.2 | |
| | May | 102.8 | 0.6 | 1.7 | |
| | June | 103.5 | 0.7 | 2.3 | |
| | July | 104.7 | 1.2 | 2.4 | |
| | August | 106.4 | 1.6 | 3.5 | |
| | September | 108.5 | 2.0 | 4.8 | |
| | October | 111.1 | 2.4 | 6.1 | |
| | November | 112.6 | 1.4 | 5.8 | |
| | December | 113.7 | 1.0 | 4.8 | |
| 2006 | January | 113.9 | 0.2 | 2.5 | 13.9 |
| | February | 114.9 | 0.9 | 2.0 | 13.6 |
| | March | 116.0 | 1.0 | 2.0 | 14.6 |
| | April | 117.9 | 1.6 | 3.5 | 15.4 |
| | May | 120.5 | 2.2 | 4.9 | 17.2 |
| | June | 123.6 | 2.6 | 6.6 | 19.4 |
| | July | 127.0 | 2.8 | 7.7 | 21.3 |
| | August | 130.3 | 2.6 | 8.1 | 22.5 |
| | September | 131.6 | 1.0 | 6.5 | 21.3 |
| | October | 132.4 | 0.6 | 4.3 | 19.2 |
| | November | 131.9 | -0.4 | 1.2 | 17.1 |
| | December | 133.1 | 0.9 | 1.1 | 17.1 |
| 2007 | January | 133.4 | 0.2 | 0.8 | 17.1 |
| | February | 134.5 | 0.8 | 2.0 | 17.1 |
| | March | 133.9 | -0.4 | 0.6 | 15.4 |
| | April | 134.0 | 0.1 | 0.4 | 13.7 |
| | May | 132.7 | -1.0 | -1.3 | 10.1 |
| | June | 133.4 | 0.5 | -0.4 | 7.9 |
| | July | 133.3 | -0.1 | -0.5 | 5.0 |
| | August | 133.6 | 0.2 | 0.7 | 2.5 |
| | September | 133.5 | -0.1 | 0.1 | 1.4 |
| | October | 133.1 | -0.3 | -0.2 | 0.5 |
| | November | 132.7 | -0.3 | -0.7 | 0.6 |
| | December | 131.2 | -1.1 | -1.7 | -1.4 |

Table 6 Dublin - all residential properties (continued)

| Period | RPPI current base Jan. 2005 = 100 | Percentage changes | | | |
|-------------|--------------------------------------|--------------------|----------|-----------|-------|
| | | 1 month | 3 months | 12 months | |
| | | % | % | % | |
| 2008 | January | 128.6 | -2.0 | -3.4 | -3.6 |
| | February | 127.7 | -0.7 | -3.8 | -5.1 |
| | March | 126.9 | -0.6 | -3.3 | -5.2 |
| | April | 127.4 | 0.4 | -0.9 | -4.9 |
| | May | 126.9 | -0.4 | -0.6 | -4.4 |
| | June | 125.9 | -0.8 | -0.8 | -5.6 |
| | July | 124.4 | -1.2 | -2.4 | -6.7 |
| | August | 122.5 | -1.5 | -3.5 | -8.3 |
| | September | 119.5 | -2.4 | -5.1 | -10.5 |
| | October | 116.0 | -2.9 | -6.8 | -12.8 |
| | November | 112.5 | -3.0 | -8.2 | -15.2 |
| | December | 110.6 | -1.7 | -7.4 | -15.7 |
| 2009 | January | 108.1 | -2.3 | -6.8 | -15.9 |
| | February | 104.1 | -3.7 | -7.5 | -18.5 |
| | March | 100.0 | -3.9 | -9.6 | -21.2 |
| | April | 96.1 | -3.9 | -11.1 | -24.6 |
| | May | 94.1 | -2.1 | -9.6 | -25.8 |
| | June | 92.4 | -1.8 | -7.6 | -26.6 |
| | July | 91.4 | -1.1 | -4.9 | -26.5 |
| | August | 90.7 | -0.8 | -3.6 | -26.0 |
| | September | 89.8 | -1.0 | -2.8 | -24.9 |
| | October | 88.2 | -1.8 | -3.5 | -24.0 |
| | November | 86.2 | -2.3 | -5.0 | -23.4 |
| | December | 84.2 | -2.3 | -6.2 | -23.9 |
| 2010 | January | 82.7 | -1.8 | -6.2 | -23.5 |
| | February | 81.8 | -1.1 | -5.1 | -21.4 |
| | March | 81.6 | -0.2 | -3.1 | -18.4 |
| | April | 81.0 | -0.7 | -2.1 | -15.7 |
| | May | 80.0 | -1.2 | -2.2 | -15.0 |
| | June | 79.1 | -1.1 | -3.1 | -14.4 |
| | July | 78.4 | -0.9 | -3.2 | -14.2 |
| | August | 78.1 | -0.4 | -2.4 | -13.9 |
| | September | 77.1 | -1.3 | -2.5 | -14.1 |
| | October | 76.5 | -0.8 | -2.4 | -13.3 |
| | November | 75.5 | -1.3 | -3.3 | -12.4 |
| | December | 75.2 | -0.4 | -2.5 | -10.7 |
| 2011 | January | 73.9 | -1.7 | -3.4 | -10.6 |
| | February | 72.3 | -2.2 | -4.2 | -11.6 |
| | March | 71.0 | -1.8 | -5.6 | -13.0 |
| | April | 70.5 | -0.7 | -4.6 | -13.0 |
| | May | 70.8 | 0.4 | -2.1 | -11.5 |
| | June | 69.1 | -2.4 | -2.7 | -12.6 |
| | July | 69.1 | 0.0 | -2.0 | -11.9 |
| | August | 66.5 | -3.8 | -6.1 | -14.9 |
| | September | 65.1 | -2.1 | -5.8 | -15.6 |
| | October | 63.1 | -3.1 | -8.7 | -17.5 |
| | November | 62.2 | -1.4 | -6.5 | -17.6 |

Table 7 Dublin - houses

| Period | | RPPI current base Jan. 2005 = 100 | Percentage changes | | |
|-------------|-----------|--------------------------------------|--------------------|----------|-----------|
| | | | 1 month | 3 months | 12 months |
| | | | % | % | % |
| 2005 | Year | 106.2 | | | |
| 2006 | Year | 126.7 | | | 19.2 |
| 2007 | Year | 136.3 | | | 7.6 |
| 2008 | Year | 126.3 | | | -7.4 |
| 2009 | Year | 98.1 | | | -22.3 |
| 2010 | Year | 83.6 | | | -14.8 |
| 2005 | January | 100.0 | | | |
| | February | 100.8 | 0.8 | | |
| | March | 101.2 | 0.4 | | |
| | April | 102.4 | 1.2 | 2.4 | |
| | May | 103.4 | 1.0 | 2.6 | |
| | June | 104.2 | 0.8 | 3.0 | |
| | July | 105.6 | 1.3 | 3.1 | |
| | August | 107.3 | 1.6 | 3.8 | |
| | September | 109.4 | 2.0 | 5.0 | |
| | October | 112.0 | 2.4 | 6.1 | |
| | November | 113.7 | 1.5 | 6.0 | |
| | December | 114.9 | 1.1 | 5.0 | |
| 2006 | January | 115.2 | 0.3 | 2.9 | 15.2 |
| | February | 116.4 | 1.0 | 2.4 | 15.5 |
| | March | 117.8 | 1.2 | 2.5 | 16.4 |
| | April | 119.4 | 1.4 | 3.6 | 16.6 |
| | May | 122.1 | 2.3 | 4.9 | 18.1 |
| | June | 125.6 | 2.9 | 6.6 | 20.5 |
| | July | 129.9 | 3.4 | 8.8 | 23.0 |
| | August | 133.3 | 2.6 | 9.2 | 24.2 |
| | September | 134.4 | 0.8 | 7.0 | 22.9 |
| | October | 135.3 | 0.7 | 4.2 | 20.8 |
| | November | 134.6 | -0.5 | 1.0 | 18.4 |
| | December | 136.2 | 1.2 | 1.3 | 18.5 |
| 2007 | January | 135.7 | -0.4 | 0.3 | 17.8 |
| | February | 136.7 | 0.7 | 1.6 | 17.4 |
| | March | 136.4 | -0.2 | 0.1 | 15.8 |
| | April | 137.8 | 1.0 | 1.5 | 15.4 |
| | May | 135.9 | -1.4 | -0.6 | 11.3 |
| | June | 136.6 | 0.5 | 0.1 | 8.8 |
| | July | 135.9 | -0.5 | -1.4 | 4.6 |
| | August | 136.8 | 0.7 | 0.7 | 2.6 |
| | September | 136.9 | 0.1 | 0.2 | 1.9 |
| | October | 136.6 | -0.2 | 0.5 | 1.0 |
| | November | 136.7 | 0.1 | -0.1 | 1.6 |
| | December | 134.1 | -1.9 | -2.0 | -1.5 |

Table 7 Dublin - houses (continued)

| Period | RPI current base Jan. 2005 = 100 | Percentage changes | | | |
|-------------|-------------------------------------|--------------------|----------|-----------|-------|
| | | 1 month | 3 months | 12 months | |
| | | % | % | % | |
| 2008 | January | 130.6 | -2.6 | -4.4 | -3.8 |
| | February | 128.9 | -1.3 | -5.7 | -5.7 |
| | March | 128.2 | -0.5 | -4.4 | -6.0 |
| | April | 129.6 | 1.1 | -0.8 | -6.0 |
| | May | 130.6 | 0.8 | 1.3 | -3.9 |
| | June | 130.7 | 0.1 | 2.0 | -4.3 |
| | July | 129.3 | -1.1 | -0.2 | -4.9 |
| | August | 127.1 | -1.7 | -2.7 | -7.1 |
| | September | 123.9 | -2.5 | -5.2 | -9.5 |
| | October | 121.4 | -2.0 | -6.1 | -11.1 |
| | November | 118.3 | -2.6 | -6.9 | -13.5 |
| | December | 116.7 | -1.4 | -5.8 | -13.0 |
| 2009 | January | 113.2 | -3.0 | -6.8 | -13.3 |
| | February | 108.9 | -3.8 | -7.9 | -15.5 |
| | March | 104.4 | -4.1 | -10.5 | -18.6 |
| | April | 100.2 | -4.0 | -11.5 | -22.7 |
| | May | 97.5 | -2.7 | -10.5 | -25.3 |
| | June | 95.6 | -1.9 | -8.4 | -26.9 |
| | July | 94.8 | -0.8 | -5.4 | -26.7 |
| | August | 95.1 | 0.3 | -2.5 | -25.2 |
| | September | 95.2 | 0.1 | -0.4 | -23.2 |
| | October | 93.7 | -1.6 | -1.2 | -22.8 |
| | November | 90.9 | -3.0 | -4.4 | -23.2 |
| | December | 88.2 | -3.0 | -7.4 | -24.4 |
| 2010 | January | 86.5 | -1.9 | -7.7 | -23.6 |
| | February | 86.3 | -0.2 | -5.1 | -20.8 |
| | March | 86.3 | 0.0 | -2.2 | -17.3 |
| | April | 85.7 | -0.7 | -0.9 | -14.5 |
| | May | 84.3 | -1.6 | -2.3 | -13.5 |
| | June | 83.2 | -1.3 | -3.6 | -13.0 |
| | July | 83.1 | -0.1 | -3.0 | -12.3 |
| | August | 83.2 | 0.1 | -1.3 | -12.5 |
| | September | 82.4 | -1.0 | -1.0 | -13.4 |
| | October | 81.5 | -1.1 | -1.9 | -13.0 |
| | November | 80.6 | -1.1 | -3.1 | -11.3 |
| | December | 79.9 | -0.9 | -3.0 | -9.4 |
| 2011 | January | 78.4 | -1.9 | -3.8 | -9.4 |
| | February | 76.4 | -2.6 | -5.2 | -11.5 |
| | March | 75.2 | -1.6 | -5.9 | -12.9 |
| | April | 74.9 | -0.4 | -4.5 | -12.6 |
| | May | 75.1 | 0.3 | -1.7 | -10.9 |
| | June | 73.3 | -2.4 | -2.5 | -11.9 |
| | July | 73.5 | 0.3 | -1.9 | -11.6 |
| | August | 71.0 | -3.4 | -5.5 | -14.7 |
| | September | 69.8 | -1.7 | -4.8 | -15.3 |
| | October | 67.6 | -3.2 | -8.0 | -17.1 |
| | November | 66.0 | -2.4 | -7.0 | -18.1 |

Table 8 Dublin - apartments

| Period | | RPPI current base Jan. 2005 = 100 | Percentage changes | | |
|-------------|-----------|--------------------------------------|--------------------|----------|-----------|
| | | | 1 month | 3 months | 12 months |
| | | | % | % | % |
| 2005 | Year | 103.8 | | | |
| 2006 | Year | 117.5 | | | 13.2 |
| 2007 | Year | 124.1 | | | 5.6 |
| 2008 | Year | 113.0 | | | -9.0 |
| 2009 | Year | 83.9 | | | -25.8 |
| 2010 | Year | 68.1 | | | -18.8 |
| 2005 | January | 100.0 | | | |
| | February | 101.7 | 1.7 | | |
| | March | 101.3 | -0.4 | | |
| | April | 101.5 | 0.2 | 1.5 | |
| | May | 101.1 | -0.4 | -0.6 | |
| | June | 101.5 | 0.4 | 0.2 | |
| | July | 102.0 | 0.5 | 0.5 | |
| | August | 103.5 | 1.5 | 2.4 | |
| | September | 106.0 | 2.4 | 4.4 | |
| | October | 108.3 | 2.2 | 6.2 | |
| | November | 109.2 | 0.8 | 5.5 | |
| | December | 110.0 | 0.7 | 3.8 | |
| 2006 | January | 109.9 | -0.1 | 1.5 | 9.9 |
| | February | 110.5 | 0.5 | 1.2 | 8.7 |
| | March | 110.6 | 0.1 | 0.5 | 9.2 |
| | April | 113.4 | 2.5 | 3.2 | 11.7 |
| | May | 115.3 | 1.7 | 4.3 | 14.0 |
| | June | 117.4 | 1.8 | 6.1 | 15.7 |
| | July | 118.2 | 0.7 | 4.2 | 15.9 |
| | August | 120.9 | 2.3 | 4.9 | 16.8 |
| | September | 123.1 | 1.8 | 4.9 | 16.1 |
| | October | 123.7 | 0.5 | 4.7 | 14.2 |
| | November | 123.4 | -0.2 | 2.1 | 13.0 |
| | December | 123.7 | 0.2 | 0.5 | 12.5 |
| 2007 | January | 125.9 | 1.8 | 1.8 | 14.6 |
| | February | 127.4 | 1.2 | 3.2 | 15.3 |
| | March | 126.0 | -1.1 | 1.9 | 13.9 |
| | April | 123.3 | -2.1 | -2.1 | 8.7 |
| | May | 123.1 | -0.2 | -3.4 | 6.8 |
| | June | 123.9 | 0.6 | -1.7 | 5.5 |
| | July | 125.4 | 1.2 | 1.7 | 6.1 |
| | August | 124.1 | -1.0 | 0.8 | 2.6 |
| | September | 123.4 | -0.6 | -0.4 | 0.2 |
| | October | 122.6 | -0.6 | -2.2 | -0.9 |
| | November | 121.3 | -1.1 | -2.3 | -1.7 |
| | December | 122.6 | 1.1 | -0.6 | -0.9 |

Table 8 Dublin - apartments (continued)

| Period | RPI current base Jan. 2005 = 100 | Percentage changes | | | |
|-------------|-------------------------------------|--------------------|----------|-----------|-------|
| | | 1 month | 3 months | 12 months | |
| | | % | % | % | |
| 2008 | January | 122.3 | -0.2 | -0.2 | -2.9 |
| | February | 123.4 | 0.9 | 1.7 | -3.1 |
| | March | 122.2 | -1.0 | -0.3 | -3.0 |
| | April | 121.1 | -0.9 | -1.0 | -1.8 |
| | May | 117.8 | -2.7 | -4.5 | -4.3 |
| | June | 114.7 | -2.6 | -6.1 | -7.4 |
| | July | 112.9 | -1.6 | -6.8 | -10.0 |
| | August | 111.8 | -1.0 | -5.1 | -9.9 |
| | September | 109.1 | -2.4 | -4.9 | -11.6 |
| | October | 103.6 | -5.0 | -8.2 | -15.5 |
| | November | 99.5 | -4.0 | -11.0 | -18.0 |
| | December | 97.0 | -2.5 | -11.1 | -20.9 |
| 2009 | January | 96.5 | -0.5 | -6.9 | -21.1 |
| | February | 93.2 | -3.4 | -6.3 | -24.5 |
| | March | 89.9 | -3.5 | -7.3 | -26.4 |
| | April | 86.5 | -3.8 | -10.4 | -28.6 |
| | May | 85.9 | -0.7 | -7.8 | -27.1 |
| | June | 84.6 | -1.5 | -5.9 | -26.2 |
| | July | 83.2 | -1.7 | -3.8 | -26.3 |
| | August | 80.9 | -2.8 | -5.8 | -27.6 |
| | September | 78.1 | -3.5 | -7.7 | -28.4 |
| | October | 76.4 | -2.2 | -8.2 | -26.3 |
| | November | 75.8 | -0.8 | -6.3 | -23.8 |
| | December | 75.2 | -0.8 | -3.7 | -22.5 |
| 2010 | January | 74.1 | -1.5 | -3.0 | -23.2 |
| | February | 71.7 | -3.2 | -5.4 | -23.1 |
| | March | 70.8 | -1.3 | -5.9 | -21.2 |
| | April | 70.2 | -0.8 | -5.3 | -18.8 |
| | May | 70.5 | 0.4 | -1.7 | -17.9 |
| | June | 69.9 | -0.9 | -1.3 | -17.4 |
| | July | 67.3 | -3.7 | -4.1 | -19.1 |
| | August | 66.1 | -1.8 | -6.2 | -18.3 |
| | September | 64.4 | -2.6 | -7.9 | -17.5 |
| | October | 64.5 | 0.2 | -4.2 | -15.6 |
| | November | 63.4 | -1.7 | -4.1 | -16.4 |
| | December | 63.9 | 0.8 | -0.8 | -15.0 |
| 2011 | January | 63.7 | -0.3 | -1.2 | -14.0 |
| | February | 63.2 | -0.8 | -0.3 | -11.9 |
| | March | 61.4 | -2.8 | -3.9 | -13.3 |
| | April | 60.3 | -1.8 | -5.3 | -14.1 |
| | May | 60.1 | -0.3 | -4.9 | -14.8 |
| | June | 59.2 | -1.5 | -3.6 | -15.3 |
| | July | 58.1 | -1.9 | -3.6 | -13.7 |
| | August | 54.6 | -6.0 | -9.2 | -17.4 |
| | September | 52.0 | -4.8 | -12.2 | -19.3 |
| | October | 50.8 | -2.3 | -12.6 | -21.2 |
| | November | 53.2 | 4.7 | -2.6 | -16.1 |

Background Notes

Definition The Residential Property Price Index (RPPI) is designed to measure the change in the average level of prices paid for residential properties sold in Ireland. The index is mix-adjusted to allow for the fact that different types of property are sold in different periods.

Data Source The RPPI is compiled using data on mortgage drawdowns provided on a monthly basis by 8 of the main Mortgage Lending Institutions under Section 13 of the Housing Act (2002). This data provides details on the characteristics of properties bought (such as building type and size) as well as the price paid. It is transactions based; meaning that prices are recorded only where a sale occurs. Not all residential property transactions are funded by a mortgage (i.e. they are cash based) and these transactions are excluded from the scope of the index.

The CSO has conducted an initial preliminary analysis of Stamp Duty returns (ST21 returns) to the Revenue Commissioners. As all transfers of residential property require that a Stamp Duty return is made, this analysis allows us to estimate the total size of the residential property market (excluding the construction of self-build houses). From this we can estimate the coverage provided by the mortgage transactions reported to the CSO. The latest available data is in respect of 2009. The table below shows that, in volume terms, the mortgage drawdown data covers in excess of 75% of the market, as measured by Stamp Duty returns, in 4 of the 5 years between 2005 and 2009.

Coverage of stamp duty returns versus mortgage drawdown returns 2005-2009

| Year | Stamp duty returns where only a residential property is transacted | Mortgage drawdown returns | % coverage |
|------|--|---------------------------|------------|
| 2005 | 80,685 | 71,138 | 88 |
| 2006 | 86,086 | 66,749 | 78 |
| 2007 | 66,090 | 51,852 | 78 |
| 2008 | 42,682 | 29,763 | 70 |
| 2009 | 19,719 | 18,596 | 94 |

Mix Adjustment Residential properties are heterogeneous, meaning that no two houses or apartments are exactly identical. This poses a challenge when trying to construct a price index as there is a need to separate pure price change from differences in the quality of the products being bought over time. Typically this is done by comparing the prices of exactly the same products, time after time. This is, for example, the method used in the Consumer Price Index. However, in the case of residential properties, price is determined by many characteristics (location, size, build type etc) which make direct price comparisons difficult. Furthermore, only a small portion of the total housing stock is sold in any given month. The combination of these factors means that the matching process that would typically be used to calculate a standard or typical price index cannot be used in the case of houses and apartments.

The hedonic method is the prevalent statistical process for the measurement of residential price change. In this method, a number of characteristics which influence prices are analysed so that we can estimate and exclude the part of the price change that can be attributed to them. These characteristics are; location, building type, floor area, number of bedrooms, new or old and first time buyer or not. By excluding the price change determined by these characteristics we are left with an index of pure price change for a consistent set of characteristics - or more simply - a residential property price index. This index uses the rolling year hedonic regression model.

Weights Weights are calculated at the beginning of each year based on the value of transactions during the previous year as given by the mortgage drawdown data. The index is an annual chain-linked Laspeyres-type index. It is calculated by updating the previous month's weights by the estimated monthly changes in their average prices.

Periodicity The index is compiled on a monthly basis. In order to smooth out short-term volatility in the series and highlight longer-term trends the published indices are based on a 3 month rolling average, i.e. a simple average of the current month and the previous 2 months. However, care should still be taken when interpreting monthly figures which may indicate short-term volatility rather than underlying change in longer term price trends.

Aggregate indices (National - all residential properties, National - houses, National - apartments, National excluding Dublin - all residential properties and Dublin - all residential properties) are compiled using monthly indices rather than the published 3 month rolling average indices. As a result these higher level indices may, in some periods, show a slight variation with their published constituent indices.

Calculating percentage changes in the index The movement of the RPPI is expressed as percentage change, rather than a change in index points, because index point changes are affected by the level of the index in relation to its base period, whereas percentage changes are not.

The example below illustrates the computation of a percentage change:

| Percentage change calculation | |
|-------------------------------|-------------|
| Current Index | 79.0 |
| Less previous Index | 80.4 |
| Equals in index points | -1.4 |
| Divided by the previous Index | 80.4 |
| Equals | -0.0174 |
| Results multiplied by 100 | -0.0174*100 |
| Equals percentage change | -1.7% |