

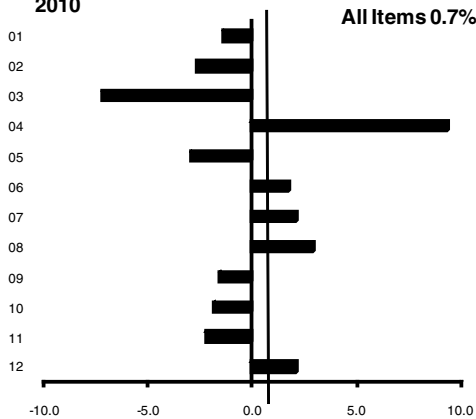


Consumer Price Index

Detailed Sub-Indices

October 2010

Comparison of main CPI groups to the overall CPI annual % change - October 2010



CPI (Base: December 2006 = 100)

COICOP Group	% changes	
	One month	12 months
01 Food and Non-Alcoholic Beverages	+0.2	-1.4
02 Alcoholic Beverages and Tobacco	+0.2	-2.7
03 Clothing and Footwear	-0.7	-7.2
04 Housing, Water, Electricity, Gas and Other Fuels	+0.4	+9.4
05 Furnishings, Household Equipment and Routine Household Maintenance	-0.2	-2.9
06 Health	+1.1	+1.8
07 Transport	-0.3	+2.1
08 Communications	-	+2.9
09 Recreation and Culture	+0.3	-1.6
10 Education	-0.7	-1.9
11 Restaurants and Hotels	-0.5	-2.2
12 Miscellaneous Goods and Services	+0.5	+2.1
ALL ITEMS	-	+0.7

Prices rise by 0.7% in the year to October

Consumer Prices in October, as measured by the CPI, remained unchanged in the month. This compares to a decrease of 0.2% recorded in October of last year. As a result, prices on average, as measured by the CPI, were 0.7% higher in October compared with October 2009.

The most significant monthly price changes were increases in *Health* (+1.1%), *Miscellaneous Goods & Services* (+0.5%) and *Housing, Water, Electricity, Gas & Other Fuels* (+0.4%). There were decreases in *Clothing & Footwear* (-0.7%) and *Education* (-0.7%).

The most notable changes in the year were increases in *Housing, Water, Electricity, Gas & Other Fuels* (+9.4%), *Communications* (+2.9%), *Transport* (+2.1%) and *Miscellaneous Goods & Services* (+2.1%). There were decreases in *Clothing & Footwear* (-7.2%), *Furnishings, Household Equipment & Routine Household Maintenance* (-2.9%) and *Alcoholic Beverages & Tobacco* (-2.7%).

The annual rate of inflation for Services was 2.1% in the year to October, while Goods decreased by 0.8%.

This release provides a detailed analysis of the major price developments within the main CPI commodity groups in tables 1 to 17. Also included are Tables A and B, which compare the contributions towards the annual rate of inflation for the current month with the corresponding period last year.

Published by the Central Statistics Office, Ireland.

Ardee Road Skehard Road
Dublin 6 Cork
Ireland Ireland

LoCall: 1890 313 414 (ROI)
0870 8760256 (UK/NI)

Tel: +353 1 498 4000 Tel: +353 21 453 5000
Fax: +353 1 498 4229 Fax: +353 21 453 5555

Both offices may be contacted through any of these telephone numbers.

CSO on the Web: www.cso.ie
and go to
Economy: Prices

Director General: Gerard O'Hanlon

Enquiries:

CPI Statistics (021) 453 5445, 453 5438
cpi@cso.ie
Queries and Sales Information Section, ext 5021
information@cso.ie

© Central Statistics Office
The contents of this release may be quoted provided the source is given clearly and accurately. Reproduction for own or internal use is permitted.

Table A Comparison of Contributions to the Annual Rate of Inflation for Oct 09 and Oct 10

COICOP Group	Contributions to overall CPI % change		
	Oct'08 - Oct'09	Oct'09 - Oct'10	Difference
01 Food and Non-Alcoholic Beverages	- 0.76	- 0.16	+ 0.60
02 Alcoholic Beverages and Tobacco	+ 0.43	- 0.19	- 0.62
03 Clothing and Footwear	- 0.57	- 0.30	+ 0.27
04 Housing, Water, Electricity, Gas and Other Fuels	- 5.56	+ 1.40	+ 6.96
05 Furnishings, Household Equipment and Routine Household Maintenance	- 0.16	- 0.12	+ 0.04
06 Health	+ 0.09	+ 0.06	- 0.03
07 Transport	- 0.40	+ 0.29	+ 0.69
08 Communications	- 0.01	+ 0.10	+ 0.11
09 Recreation and Culture	- 0.09	- 0.15	- 0.06
10 Education	+ 0.23	- 0.05	- 0.28
11 Restaurants and Hotels	- 0.25	- 0.35	- 0.10
12 Miscellaneous Goods and Services	+ 0.48	+ 0.20	- 0.28
ALL ITEMS % change	- 6.6¹	+ 0.7¹	+ 7.3¹
Goods	- 2.32	- 0.39	+ 1.93
Services ²	- 4.23	+ 1.14	+ 5.37

¹ The sum may not total exactly due to rounding differences

² Includes Mortgage Interest

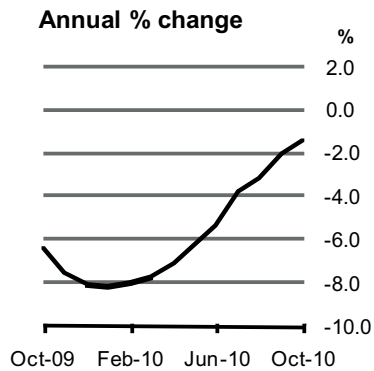
Table B Positive and Negative factors in the comparison of the Annual Rate of Inflation for Oct 09 and Oct 10

COICOP Group	+	COICOP Group	-
04 Housing, Water, Electricity, Gas and Other Fuels	+ 6.96	02 Alcoholic Beverages and Tobacco	- 0.62
07 Transport	+ 0.69	12 Miscellaneous Goods and Services	- 0.28
01 Food and Non-Alcoholic Beverages	+ 0.60	10 Education	- 0.28
03 Clothing and Footwear	+ 0.27	11 Restaurants and Hotels	- 0.10
08 Communications	+ 0.11	09 Recreation and Culture	- 0.06
05 Furnishings, Household Equipment and Routine Household Maintenance	+ 0.04	06 Health	- 0.03
Total Positive	+ 8.67	Total Negative	- 1.37
Net Difference (Positive less Negative)			+ 7.3¹

¹ The net difference may not total exactly due to rounding differences

Consumer Price Index October 2010

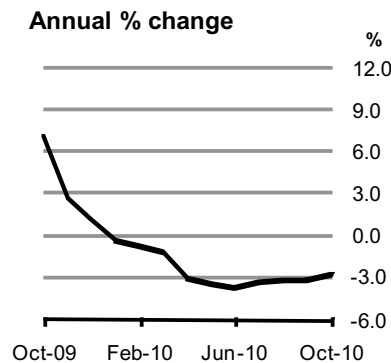
01 Food and Non-Alcoholic Beverages



01 Food and Non-Alcoholic Beverages

Food & Non-Alcoholic Beverages prices increased by 0.2% in the month and decreased by 1.4% in the year to October 2010. This compares to a decrease of 6.4% for the year to October 2009. In the month, food prices increased by 0.1% while non-alcoholic beverages prices increased by 1.7%.

In October, price increases were recorded for flour (+8.8%), coffee (+4.6%), tea (+3.9%), pork (+3.8%), other vegetable products (+2.8%), desserts & ice cream (+2.1%), cheese (+2.0%), other milk products (+1.8%), other cereals (+1.8%), other oils & fats (+1.7%), beef (+1.4%), butter (+1.4%), fruit juices (+1.3%), margarine & low fat spreads (+1.3%), sweets & chocolate (+1.2%), sugar & sweeteners (+1.2%) and fresh fruit (+1.0%). Price decreases were recorded for potatoes (-9.0%), lamb (-3.4%), cocoa (-1.6%), breakfast cereals (-1.5%), poultry (-1.4%), other bread & cereals (-1.4%) and eggs (-1.3%).

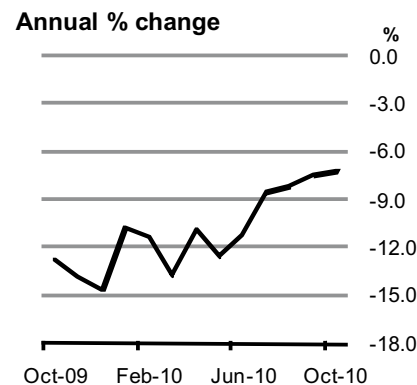


02 Alcoholic Beverages and Tobacco

02 Alcoholic Beverages and Tobacco

Overall prices increased by 0.2% in the month and decreased by 2.7% in the year to October 2010. This compares to an increase of 7.1% for the year to October 2009. In the month, alcoholic beverages prices increased by 0.5% while tobacco prices remained unchanged.

In October, price increases were recorded for wine & cider (+1.6%) and other tobacco products (+0.1%). Price decreases were recorded for beer (-0.8%) and spirits (-0.7%).



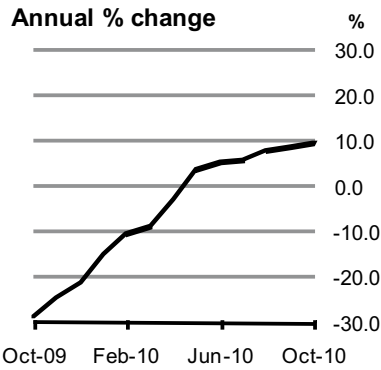
03 Clothing and Footwear

03 Clothing and Footwear

Clothing & Footwear prices decreased by 0.7% in the month and by 7.2% in the year to October 2010. This compares to a decrease of 12.8% for the year to October 2009. In the month, clothing prices decreased by 0.6% while footwear prices decreased by 0.7%.

In October, price decreases were recorded for other articles of clothing (-1.2%), repair & hire of footwear (-0.7%), garments (-0.6%) and shoes & other footwear (-0.6%). A price increase was recorded for dress hire & repair of clothing (+0.1%).

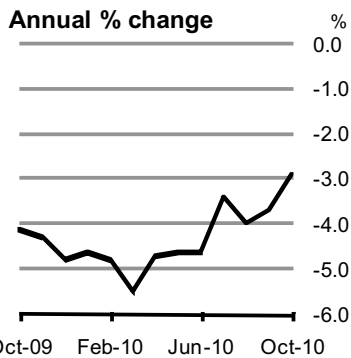
04 Housing, Water, Electricity, Gas and Other Fuels



04 Housing, Water, Electricity, Gas and Other Fuels

Housing, Water, Electricity, Gas & Other Fuels costs increased by 0.4% in the month and by 9.4% in the year to October 2010. This compares to a decrease of 28.8% for the year to October 2009.

In the month, price increases were recorded for electricity (due to the Public Service Obligation Levy on all customers from 1st October 2010) (+4.6%), solid fuels (+0.9%) and bottled gas (+0.2%). Price decreases were recorded for liquid fuels (i.e. home heating oil) (-1.2%), materials for maintenance & repair of dwelling (-0.3%) and mortgage interest (-0.1%).

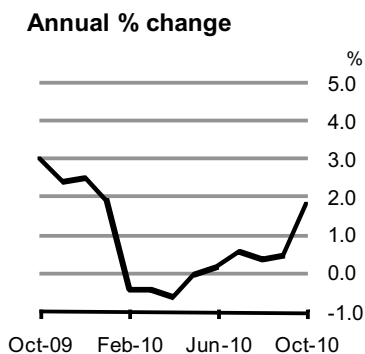


05 Furnishings, Household Equipment and Routine Household Maintenance

05 Furnishings, Household Equipment and Routine Household Maintenance

Furnishings, Household Equipment & Routine Household Maintenance costs decreased by 0.2% in the month and by 2.9% in the year to October 2010. This compares to a decrease of 4.1% for the year to October 2009.

In the month, price decreases were recorded for household textiles (-2.9%), glassware, tableware & household utensils (-1.9%), small electric household appliances (-1.0%), furniture & furnishings (-0.6%) and major household appliances (-0.6%). Price increases were recorded for non-durable household goods (+1.4%) and small tools & miscellaneous accessories (+1.1%).



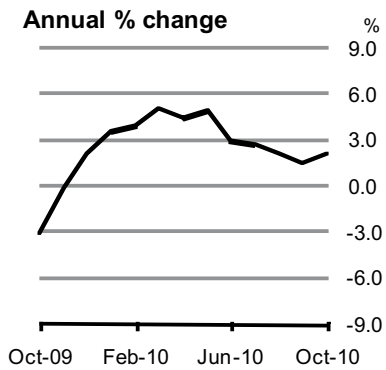
06 Health

06 Health

Overall health costs and charges increased by 1.1% in the month and by 1.8% in the year to October 2010. This compares to an increase of 3.0% for the year to October 2009.

In the month, price increases were recorded for prescribed drugs (due to the introduction of the Prescription Levy for medical card holders) (+6.5%) and other medical products (which includes condoms, petroleum jelly, disinfectant and adhesive dressing) (+0.8%). A price decrease was recorded for other medicines (which includes pain relievers, antacid, cough mixture and vitamins & other supplements) (-0.3%).

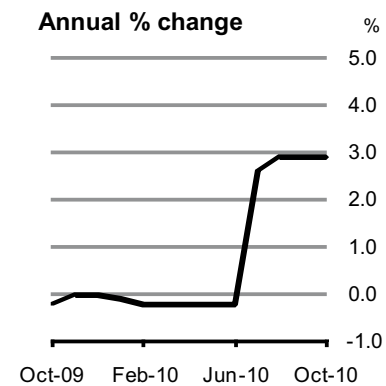
07 Transport



Transport costs decreased by 0.3% in the month and increased by 2.1% in the year to October 2010. This compares to a decrease of 3.1% for the year to October 2009.

In the month, price decreases were recorded for other vehicle costs (which includes parking fees and car rental charges) (-0.9%), motor cars (-0.7%), petrol (-0.5%) and sea transport (-0.2%). Price increases were recorded for air transport (+3.3%), combined transport (+2.0%), bus fares (+0.9%) and motor cycles (+0.5%).

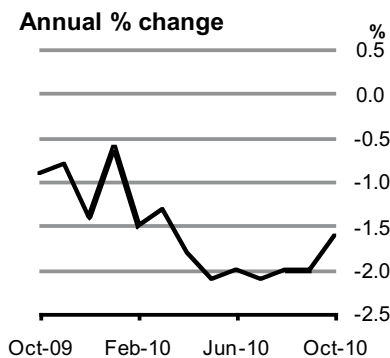
07 Transport



08 Communications

Overall communication costs remained unchanged in the month and increased by 2.9% in the year to October 2010. This compares to a decrease of 0.2% for the year to October 2009.

08 Communications



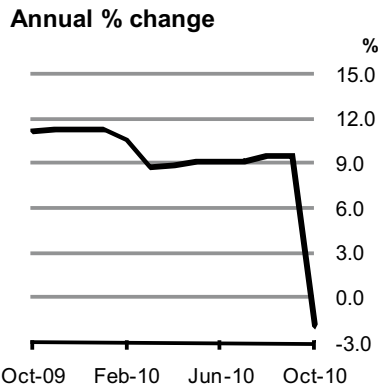
09 Recreation and Culture

Overall prices increased by 0.3% in the month and decreased by 1.6% in the year to October 2010. This compares to a decrease of 0.9% for the year to October 2009.

In the month, price increases were recorded for television services (+2.7%), books (+2.4%), nightclubs (+0.6%) and other entertainment (+0.2%). Price decreases were recorded for photographic & cinematographic equipment & optical instruments (-0.9%), recording media (-0.7%), equipment for the reception, recording & reproduction of sound & pictures (-0.7%), cinema (-0.7%) and information processing equipment (-0.5%).

09 Recreation and Culture

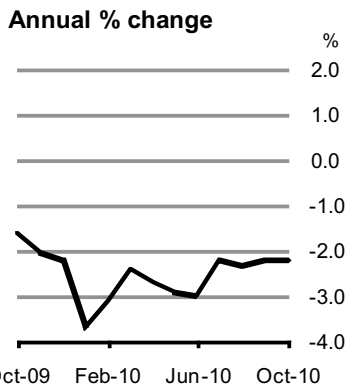
10 Education



Education costs decreased by 0.7% in the month and by 1.9% in the year to October 2010. This compares to an increase of 11.2% for the year to October 2009.

In the month a price decrease was recorded for third level education (-1.3%). A price increase was recorded for primary education (+1.3%).

10 Education

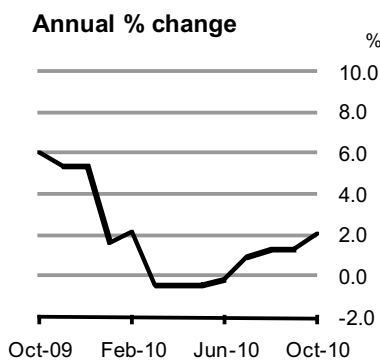


11 Restaurants and Hotels

Prices for the overall category decreased by 0.5% in the month and by 2.2% in the year to October 2010. This compares to a decrease of 1.6% for the year to October 2009.

In the month, price decreases were recorded for accommodation services (-3.5%), wine & cider (-0.2%) and beer (-0.1%). A price increase was recorded for restaurants, cafes & fast food (+0.1%).

11 Restaurants and Hotels



12 Miscellaneous Goods and Services

Overall prices increased by 0.5% in the month and by 2.1% in the year to October 2010. This compares to an increase of 6.0% for the year to October 2009.

In the month, price increases were recorded for hair products (+3.9%), dwelling insurance (+1.7%), other social protection (which includes nursing home costs) (+1.3%), motor car insurance (+1.2%), childcare (+0.7%) and other personal grooming (+0.7%). Price decreases were recorded for other personal goods (-1.8%) and financial services (-0.4%).

12 Miscellaneous Goods and Services

Table 1 Food and Non-Alcoholic Beverages - October 2010

Description	Dec 2006 base expenditure weight %	Current Index	% change 1 mth	% change 12 mths
Food	10.8076	100.7	0.1	-1.7
Bread and Cereals	2.0242	106.5	0.0	-1.8
Bread	0.6553	117.0	0.5	-1.8
Flour	0.0517	155.4	8.8	14.7
Biscuits	0.3268	96.7	-0.8	-1.4
Cakes	0.3762	101.4	0.0	-4.4
Breakfast cereals	0.2949	99.9	-1.5	2.8
Other cereals	0.0992	113.5	1.8	1.2
Other bread & cereals	0.2201	93.2	-1.4	-8.9
Meat	2.6729	94.4	-0.3	-5.3
Beef	0.7179	102.3	1.4	-2.9
Lamb	0.2234	101.6	-3.4	-0.7
Pork	0.1781	90.4	3.8	-4.8
Bacon	0.3906	89.0	-0.2	-5.7
Poultry	0.4633	83.8	-1.4	-10.5
Other meat products	0.6996	95.2	-1.1	-6.1
Fish	0.3592	97.8	-0.3	-1.5
Fresh fish	0.1814	94.2	-0.8	-2.0
Frozen/tinned/smoked fish	0.1778	101.5	0.3	-1.2
Milk, cheese and eggs	1.3177	116.0	0.7	-1.2
Milk	0.6567	125.6	0.2	-1.3
Other milk products	0.2608	103.9	1.8	-0.3
Cheese	0.2790	106.5	2.0	-1.4
Eggs	0.1212	111.3	-1.3	-3.0
Oils and fats	0.2734	114.6	1.4	2.7
Butter	0.0813	119.9	1.4	5.8
Margarine & low fat spreads	0.1448	116.1	1.3	1.4
Other oils & fats	0.0474	100.7	1.7	0.7
Fruit	0.8597	93.7	0.8	3.9
Fresh fruit	0.7731	91.9	1.0	3.8
Other fruits	0.0866	110.7	0.2	5.8
Vegetables	1.5782	92.9	-1.1	-0.1
Potatoes	0.3256	72.8	-9.0	-11.3
Other fresh vegetables	0.6079	98.1	-0.3	4.5
Tinned vegetables	0.0956	119.1	0.1	3.8
Frozen vegetables	0.1549	91.0	0.8	-1.5
Other vegetable products	0.3943	96.1	2.8	0.3
Sugar, jam, honey, chocolate and confectionery	0.8912	103.2	1.3	-1.1
Sugar & sweeteners	0.0583	95.3	1.2	-0.4
Preserves	0.0526	112.3	-0.4	3.9
Sweets & chocolate	0.5151	104.7	1.2	0.2
Desserts & ice cream	0.2652	100.5	2.1	-4.3
Other food products	0.8312	98.6	-0.3	-1.2
Condiments & sauces	0.2761	101.9	0.3	1.8
Soup	0.1102	109.5	-0.1	3.9
Miscellaneous food items	0.4449	93.9	-0.7	-4.5
Non-alcoholic beverages	0.9347	101.0	1.7	3.1
Coffee, tea and cocoa	0.2380	104.5	3.7	4.0
Tea	0.1417	105.7	3.9	2.0
Coffee	0.0817	98.1	4.6	4.5
Cocoa	0.0146	129.0	-1.6	19.3
Mineral waters, soft drinks & juices	0.6967	99.8	1.1	2.7
Soft drinks & mineral water	0.4523	104.2	0.9	4.0
Fruit juices	0.2444	91.5	1.3	-0.2
Total	11.7423	100.7	0.2	-1.4

Table 2 Alcoholic Beverages and Tobacco - October 2010

Description	Dec 2006 base expenditure weight %	Current Index	% change 1 mth	% change 12 mths
Alcoholic Beverages	2.8725	98.3	0.5	-7.8
Spirits	0.5818	98.9	-0.7	-11.0
Wine & cider	1.5258	98.0	1.6	-5.8
Beer	0.7649	98.4	-0.8	-9.2
Tobacco	3.1759	122.3	0.0	1.3
Cigarettes	3.1271	122.4	0.0	1.3
Other tobacco products	0.0488	115.3	0.1	1.7
Total	6.0484	110.9	0.2	-2.7

Table 3 Clothing and Footwear - October 2010

Description	Dec 2006 base expenditure weight %	Current Index	% change 1 mth	% change 12 mths
Clothing	4.4488	72.2	-0.6	-6.7
Garments	4.2028	70.6	-0.6	-7.1
Other articles of clothing	0.1001	85.8	-1.2	-4.6
Cleaning, repair & hire of clothing	0.1459	108.0	0.0	-1.3
Dry cleaning & laundry	0.1052	109.5	0.0	-0.7
Dress hire & repair of clothing	0.0408	104.2	0.1	-2.7
Footwear	0.9670	70.7	-0.7	-9.0
Shoes & other footwear	0.9537	70.3	-0.6	-9.1
Repair & hire of footwear	0.0133	105.4	-0.7	-2.2
Total	5.4158	71.9	-0.7	-7.2

Table 4 Housing, Water, Electricity, Gas and Other Fuels - October 2010

Description	Dec 2006 base expenditure weight %	Current Index	% change 1 mth	% change 12 mths
Rents & other housing costs	9.5303	93.3	-0.1	15.2
Rents	2.8696	90.5	0.0	-2.8
Mortgage interest	6.6607	94.5	-0.1	24.7
Maintenance & repair of the dwelling	2.4521	99.8	-0.2	-1.6
Materials for maint. & repair of dwelling	1.5062	101.0	-0.3	0.0
Services for maint. & repair of dwelling	0.9459	98.0	0.0	-3.8
Water supply, refuse & misc. services	0.5117	102.3	0.0	-2.7
Electricity, gas & other fuels	4.0142	110.5	1.7	7.1
Electricity	1.5444	115.1	4.6	3.2
Natural gas	0.7560	78.6	0.0	-1.4
Bottled gas	0.1177	123.7	0.2	3.0
Liquid fuels	0.8538	121.9	-1.2	30.5
Solid fuels	0.7423	118.2	0.9	-0.3
Total	16.5083	98.7	0.4	9.4

Table 5 Furnishings, Household Equipment and Routine Household Maintenance - October 2010

Description	Dec 2006 base expenditure weight %	Current Index	% change 1 mth	% change 12 mths
Furniture, furnishings, carpets & other flooring	1.0812	80.0	-0.5	-6.4
Furniture & furnishings	0.9467	80.7	-0.6	-5.9
Carpets & other floor coverings	0.1345	74.6	0.3	-9.9
Household textiles	0.2424	69.4	-2.9	-5.1
Household appliances	1.0459	89.2	-0.6	-4.3
Major household appliances	0.8435	88.1	-0.6	-4.7
Small electric household appliances	0.1285	86.4	-1.0	-4.8
Repair of household appliances	0.0740	106.9	0.0	0.7
Glassware, tableware & hsehd utensils	0.2577	81.1	-1.9	-4.5
Tools & equipment for house & garden	0.3627	93.4	0.8	-3.7
Major tools & equipment	0.0808	92.6	-0.1	-3.1
Small tools & misc. accessories	0.2820	93.6	1.1	-3.9
Goods & services for routine hsehd maint.	1.4321	100.6	0.6	0.9
Non-durable household goods	0.6683	96.0	1.4	1.8
Domestic & household services	0.7638	104.7	0.0	0.2
Total	4.4221	89.4	-0.2	-2.9

Table 6 Health - October 2010

Description	Dec 2006 base expenditure weight %	Current Index	% change 1 mth	% change 12 mths
Medical products, appliances & equip.	1.1764	100.0	3.0	1.0
Pharmaceutical products	0.8672	96.4	4.3	-1.7
Prescribed drugs	0.6160	93.2	6.5	-3.2
Other medicines	0.2512	104.2	-0.3	1.6
Other medical products	0.0456	96.4	0.8	-1.5
Therapeutic appliances & equip	0.2637	112.6	0.0	10.1
Outpatient services	1.0313	116.0	0.0	3.0
Medical services	0.6684	113.2	0.0	-0.2
Doctors' fees	0.4792	114.0	0.0	-0.1
Alternative & complementary medicine	0.1893	111.2	0.0	-0.2
Dental services	0.3628	121.0	0.0	8.9
Hospital services	0.9459	127.7	0.0	1.3
Total	3.1536	113.6	1.1	1.8

Table 7 Transport - October 2010

Description	Dec 2006 base expenditure weight %	Current Index	% change 1 mth	% change 12 mths
Purchase of vehicles	5.7319	88.6	-0.7	-6.2
Motor cars	5.6398	88.5	-0.7	-6.3
Motor cycles	0.0373	96.4	0.5	-2.6
Bicycles	0.0549	93.4	0.2	-0.4
Operation of personal transport equip.	5.9606	119.9	-0.2	8.4
Spare parts & accessories	0.3444	100.9	0.0	-1.0
Fuels & lubricants	3.7506	125.2	-0.4	14.5
Petrol	2.9759	126.4	-0.5	13.7
Diesel	0.7604	120.7	0.1	18.6
Motor oil	0.0143	113.5	0.4	2.1
Maintenance & repair	0.7045	110.4	0.0	-4.4
Other services	1.1611	114.2	-0.3	-0.3
Motor tax	0.8380	114.3	0.0	0.0
Other vehicle costs	0.3173	114.1	-0.9	-1.0
Driving licences	0.0058	100.9	0.0	0.0
Transport services	1.6008	114.0	1.1	4.7
Rail transport	0.2189	116.9	0.1	0.3
Road transport	0.9286	116.0	0.4	0.3
Bus fares	0.3926	126.6	0.9	0.8
Taxi	0.5360	108.2	0.0	0.0
Air transport	0.4009	108.7	3.3	20.4
Sea transport	0.0290	101.4	-0.2	7.9
Combined transport	0.0183	121.5	2.0	2.0
Other transport	0.0051	77.6	0.0	-4.9
Total	13.2933	105.7	-0.3	2.1

Table 8 Communications - October 2010

Description	Dec 2006 base expenditure weight %	Current Index	% change 1 mth	% change 12 mths
Postal services	0.0798	111.6	0.0	0.0
Telephone & communication services	3.3387	104.8	0.0	3.1
Total	3.4184	104.9	0.0	2.9

Table 9 Recreation and Culture - October 2010

Description	Dec 2006 base expenditure weight %	Current Index	% change 1 mth	% change 12 mths
Audio-visual, photographic & information processing equipment	1.0479	60.8	-0.7	-10.6
Equipment for the reception, recording & reproduction of sound & pictures	0.2217	56.0	-0.7	-9.2
Photographic & cinematographic equip. & optical instruments	0.2622	55.0	-0.9	-12.7
Information processing equip.	0.1713	40.1	-0.5	-19.3
Recording media	0.3927	76.3	-0.7	-7.9
Other major durables for recreation & culture	0.0146	91.5	0.0	-3.2
Other recreational items & equip. incl. gardens & pets	1.5602	86.6	0.0	-3.7
Games, toys & hobbies	0.5606	73.3	-0.1	-4.9
Equipment for sport, camping & open air recreation	0.1917	86.0	0.0	-9.4
Gardens, plants & flowers	0.4325	97.0	0.1	-2.1
Pets & related products	0.2570	87.7	-0.1	-1.2
Veterinary & other services for pets	0.1184	110.4	0.0	-0.3
Recreational & cultural services	3.2243	109.4	0.8	-0.2
Recreational & sporting services	1.1232	107.8	0.0	-4.1
Sports admittance	0.1449	109.4	0.0	-1.0
Sports participation	0.3086	98.0	0.0	-7.2
Club & society subscriptions	0.6697	112.0	0.0	-3.4
Cultural services	2.1011	110.3	1.3	2.0
Cinema	0.2026	106.6	-0.7	1.2
Nightclubs	0.2299	98.4	0.6	-3.6
Cultural admittance	0.5231	113.3	0.0	2.3
Other entertainment	0.1791	99.2	0.2	-0.8
Television services	0.9664	114.2	2.7	3.6
Newspapers, books & stationery	1.7290	107.5	0.7	0.9
Books	0.4724	102.8	2.4	1.4
Newspapers & periodicals	0.9333	112.1	0.1	0.6
Stationery	0.3233	100.8	0.0	1.3
Package holidays	2.5280	106.8	-0.1	-1.5
Total	10.1041	99.8	0.3	-1.6

Table 10 Education - October 2010

Description	Dec 2006 base expenditure weight %	Current Index	% change 1 mth	% change 12 mths
Primary education	0.0334	121.3	1.3	1.3
Second level education	0.1695	121.7	0.8	0.8
Third level education	1.0183	132.4	-1.3	-1.4
Other education & training	0.8217	107.3	0.0	-3.2
Total	2.0429	121.2	-0.7	-1.9

Table 11 Restaurants and Hotels - October 2010

Description	Dec 2006 base expenditure weight %	Current Index	% change 1 mth	% change 12 mths
Catering services	13.0297	106.7	0.0	-1.9
Restaurants, cafes & licenced premises	11.6723	105.6	0.0	-2.4
Beer	4.7087	106.3	-0.1	-3.1
Spirits	1.3776	106.0	0.0	-2.8
Wine & cider	1.0197	104.7	-0.2	-3.1
Soft drinks & mineral water	0.3351	109.1	0.0	-0.7
Restaurants, cafes & fast-food	4.2313	104.6	0.1	-1.5
Canteens	1.3573	115.9	0.0	1.6
Accommodation services	2.3950	84.3	-3.5	-3.4
Total	15.4247	103.2	-0.5	-2.2

Table 12 Miscellaneous Goods and Services - October 2010

Description	Dec 2006 base expenditure weight %	Current Index	% change 1 mth	% change 12 mths
Personal care	2.3999	94.5	0.5	-1.6
Hairdressing salons & personal grooming	0.8844	104.1	0.2	-1.2
Hairdressing	0.7537	103.9	0.2	-0.5
Health & beauty treatments	0.1236	104.5	0.0	-6.2
Other personal grooming	0.0071	119.0	0.7	4.6
Electric appliances for personal care	0.0130	90.2	0.6	-4.3
Other appliances, articles & products for personal care	1.5025	88.8	0.7	-1.9
Hygiene products	0.3344	90.8	0.3	-0.7
Hair products	0.2034	83.0	3.9	0.0
Cosmetics & skincare products	0.6554	91.5	0.2	-3.7
Toilet accessories	0.3093	84.9	0.1	0.0
Personal goods	0.4855	87.4	-0.7	-1.0
Jewellery, clocks & watches	0.1711	117.0	0.6	5.9
Other personal goods	0.3143	71.4	-1.8	-6.3
Social protection	1.0171	101.2	0.7	-10.1
Childcare	0.9858	100.0	0.7	-10.7
Other social protection	0.0314	139.3	1.3	7.5
Insurance	3.9334	129.8	0.7	7.5
Dwelling insurance	0.7502	147.3	1.7	14.5
Health insurance	1.7726	142.3	0.0	9.0
Transport insurance	1.4106	104.8	1.3	0.8
Motor cycle insurance	0.0193	69.6	0.0	0.0
Motor car insurance	1.3913	105.2	1.2	0.7
Financial services	0.1262	103.8	-0.4	1.0
Other services	0.4639	107.6	-0.1	-1.4
Total	8.4260	112.2	0.5	2.1

Table 13 COICOP Groups Consumer Price Monthly Percentage Changes

Period	Food and Non-Alcoholic Beverages	Alcoholic Beverages and Tobacco	Clothing and Footwear	Housing, Water, Electricity, Gas and Other Fuels	Furnishings, Household Equipment and Routine Household Maintenance	Health	Transport	Communications	Recreation and Culture	Education	Restaurants and Hotels	Miscellaneous Goods and Services	All Items CPI
Mid-December 2006	%	%	%	%	%	%	%	%	%	%	%	%	%
% Base Expenditure													
Weights	11.742	6.048	5.416	16.509	4.422	3.154	13.293	3.418	10.104	2.043	15.425	8.426	100.000
2009													
Mid-July	-1.3	+0.2	-9.9	-0.3	-1.5	+0.1	+0.4	-	-0.1	-0.1	-0.6	-0.5	-0.8
Mid-August	-1.0	-	+3.4	+1.1	+0.5	+0.1	+1.1	-	-	-0.3	+0.1	-0.1	+0.4
Mid-September	-1.3	-	+3.6	-0.3	-0.3	-0.1	-0.9	-	-0.3	-	-0.4	-0.4	-0.4
Mid-October	-0.5	-0.2	-0.9	-0.4	-1.0	-0.2	-1.0	-	-0.1	+10.9	-0.5	-0.3	-0.2
Mid-November	-0.8	-0.4	+0.1	-	-	+0.1	+0.8	-	-0.1	+1.0	-0.2	-0.1	-
Mid-December	-0.5	-1.5	-3.6	-	-0.3	-	-0.8	-	-0.1	-	-0.4	+0.2	-0.5
2010													
Mid-January	+0.1	-0.5	-9.2	+0.1	-2.4	+2.2	+0.6	-0.2	-	-	-2.0	+0.9	-0.6
Mid-February	-0.2	-0.6	+6.8	+0.7	+1.5	-2.1	+0.3	-	-0.8	-0.5	+0.4	+1.4	+0.4
Mid-March	-0.2	-0.4	+1.9	+0.1	-0.4	-	+1.5	-	-0.2	-1.7	+0.5	-1.6	+0.1
Mid-April	-0.3	+0.1	-0.5	+1.5	-0.3	-	+0.6	-	-0.2	-	-0.1	+0.1	+0.2
Mid-May	+0.4	-0.1	-1.1	+2.9	-0.2	-	+0.8	-	-0.1	-	+0.1	-	+0.6
Mid-June	+0.1	-0.3	-1.1	-0.2	-0.1	+0.1	-0.5	-	-	-	-	+0.4	-0.1
Mid-July	+0.3	+0.5	-7.1	-0.1	-0.3	+0.5	+0.2	+2.8	-0.2	-	+0.3	+0.5	-
Mid-August	-0.3	+0.2	+3.7	+3.5	-	-0.1	+0.5	+0.4	+0.1	-	-	+0.2	+0.7
Mid-September	-0.2	+0.1	+4.5	+0.2	-	-	-1.6	-	-0.3	-	-0.3	-0.4	-0.1
Mid-October	+0.2	+0.2	-0.7	+0.4	-0.2	+1.1	-0.3	-	+0.3	-0.7	-0.5	+0.5	-

Table 14 COICOP Groups Consumer Price Annual Percentage Changes

Period	Food and Non-Alcoholic Beverages	Alcoholic Beverages and Tobacco	Clothing and Footwear	Housing, Water, Electricity, Gas and Other Fuels	Furnishings, Household Equipment and Routine Household Maintenance	Health	Transport	Communications	Recreation and Culture	Education	Restaurants and Hotels	Miscellaneous Goods and Services	All Items CPI
Mid-December 2006	%	%	%	%	%	%	%	%	%	%	%	%	%
% Base Expenditure													
Weights	11.742	6.048	5.416	16.509	4.422	3.154	13.293	3.418	10.104	2.043	15.425	8.426	100.000
2009 Mid-July	-4.2	+7.7	-11.2	-26.8	-3.2	+3.4	-6.2	+0.9	-0.3	+4.4	-1.0	+8.1	-5.9
Mid-August	-4.8	+7.7	-13.2	-27.8	-2.9	+2.7	-3.7	+0.9	-0.3	+3.9	-0.7	+7.9	-5.9
Mid-September	-6.0	+7.5	-13.8	-28.5	-3.6	+2.5	-4.0	-0.3	-0.5	+3.9	-1.0	+7.6	-6.5
Mid-October	-6.4	+7.1	-12.8	-28.8	-4.1	+3.0	-3.1	-0.2	-0.9	+11.2	-1.6	+6.0	-6.6
Mid-November	-7.6	+2.7	-13.9	-24.7	-4.3	+2.4	-0.1	-	-0.8	+11.3	-2.0	+5.4	-5.7
Mid-December	-8.1	+1.2	-14.7	-21.2	-4.8	+2.5	+2.1	-	-1.4	+11.3	-2.2	+5.4	-5.0
Year	-3.5	+6.3	-11.7	-22.0	-3.1	+3.5	-4.0	+0.5	-0.3	+6.4	-	+7.6	-4.5
2010 Mid-January	-8.2	-0.3	-10.8	-15.2	-4.6	+1.9	+3.5	-0.1	-0.6	+11.3	-3.7	+1.6	-3.9
Mid-February	-8.0	-0.7	-11.4	-10.6	-4.8	-0.4	+3.9	-0.2	-1.5	+10.6	-3.1	+2.2	-3.2
Mid-March	-7.8	-1.1	-13.7	-9.0	-5.5	-0.4	+5.0	-0.2	-1.3	+8.7	-2.4	-0.4	-3.1
Mid-April	-7.1	-3.0	-10.9	-3.2	-4.7	-0.6	+4.4	-0.2	-1.8	+8.9	-2.7	-0.4	-2.1
Mid-May	-6.3	-3.4	-12.6	+3.7	-4.6	-	+4.9	-0.2	-2.1	+9.1	-2.9	-0.4	-1.1
Mid-June	-5.4	-3.7	-11.2	+5.2	-4.6	+0.2	+2.9	-0.2	-2.0	+9.1	-3.0	-0.1	-0.9
Mid-July	-3.8	-3.3	-8.5	+5.5	-3.4	+0.6	+2.7	+2.6	-2.1	+9.2	-2.2	+1.0	-0.1
Mid-August	-3.2	-3.2	-8.2	+7.9	-4.0	+0.4	+2.1	+2.9	-2.0	+9.5	-2.3	+1.3	+0.2
Mid-September	-2.0	-3.1	-7.4	+8.5	-3.7	+0.5	+1.4	+2.9	-2.0	+9.5	-2.2	+1.3	+0.5
Mid-October	-1.4	-2.7	-7.2	+9.4	-2.9	+1.8	+2.1	+2.9	-1.6	-1.9	-2.2	+2.1	+0.7

Table 15 Consumer Price Index Goods and Services by COICOP - October 2010

COICOP	Group	Mid-Dec 2006 % Base Expenditure Weights	% Goods Base Expenditure Weights	% Services Base Expenditure Weights	Index		Percentage changes		
					Goods	Services	Goods 12 Months	Services 12 Months	Overall 12 Months
01	Food and Non Alcoholic Beverages	11.742	11.742	-	100.7	-	-1.4	-	-1.4
02	Alcoholic Beverages and Tobacco	6.048	6.048	-	110.9	-	-2.7	-	-2.7
03	Clothing and Footwear	5.416	5.257	0.159	70.8	107.8	-7.5	-1.4	-7.2
04	Housing, Water, Electricity, Gas and Other Fuels	16.509	3.220	13.289	111.3	95.7	+7.3	+10.1	+9.4
05	Furnishings, Household Equipment and Routine Household Maintenance	4.422	3.557	0.865	85.7	104.7	-3.8	+0.1	-2.9
06	Health	3.154	1.177	1.977	100.0	121.6	+1.0	+2.2	+1.8
07	Transport	13.293	9.827	3.466	103.0	113.3	+2.6	+1.1	+2.1
08	Communications	3.418	0.018	3.400	74.8	105.1	-2.7	+3.0	+2.9
09	Recreation and Culture	10.104	4.233	5.871	88.1	108.3	-2.9	-0.7	-1.6
10	Education	2.043	-	2.043	-	121.2	-	-1.9	-1.9
11	Restaurants and Hotels	15.425	-	15.425	-	103.2	-	-2.2	-2.2
12	Miscellaneous Goods & Services	8.426	2.001	6.425	88.5	119.6	-1.7	+3.0	+2.1
ALL ITEMS		100.000	47.080	52.920	97.1	106.1	-0.8	+2.1	+0.7

Table 16 Consumer Price Annual Percentage Changes for selected CPI Sub-indices

Period	Goods	Services	Energy	CPI excluding	CPI excluding	CPI excluding	CPI excluding	All Items
				Mortgage Interest	Housing ¹	Tobacco	Energy Products ²	
	%	%	%	%	%	%	%	%
2008 Mid-January	+ 3.3	+ 5.1	+ 8.3	+ 3.0	+ 2.7	+ 4.3	+ 3.9	+ 4.3
Mid-February	+ 3.9	+ 5.6	+ 7.9	+ 3.4	+ 3.3	+ 4.8	+ 4.5	+ 4.8
Mid-March	+ 4.2	+ 5.7	+ 8.6	+ 3.8	+ 3.6	+ 5.0	+ 4.7	+ 5.0
Mid-April	+ 3.8	+ 4.8	+ 7.3	+ 3.5	+ 3.3	+ 4.3	+ 4.1	+ 4.3
Mid-May	+ 4.0	+ 5.3	+ 9.2	+ 3.6	+ 3.6	+ 4.7	+ 4.3	+ 4.7
Mid-June	+ 4.6	+ 5.3	+ 12.6	+ 3.9	+ 3.9	+ 4.9	+ 4.2	+ 5.0
Mid-July	+ 4.2	+ 4.5	+ 13.9	+ 3.6	+ 3.5	+ 4.3	+ 3.5	+ 4.4
Mid-August	+ 3.5	+ 5.3	+ 13.8	+ 3.2	+ 3.3	+ 4.3	+ 3.6	+ 4.3
Mid-September	+ 3.0	+ 5.5	+ 14.3	+ 3.2	+ 3.3	+ 4.2	+ 3.5	+ 4.3
Mid-October	+ 1.8	+ 5.9	+ 11.0	+ 2.8	+ 2.8	+ 3.9	+ 3.4	+ 4.0
Mid-November	+ 0.4	+ 4.2	+ 2.5	+ 2.1	+ 2.4	+ 2.2	+ 2.4	+ 2.5
Mid-December	- 0.9	+ 2.7	- 3.3	+ 1.5	+ 1.7	+ 0.9	+ 1.5	+ 1.1
Year	+ 3.0	+ 5.0	+ 8.8	+ 3.1	+ 3.2	+ 4.0	+ 3.6	+ 4.1
2009 Mid-January	- 1.6	+ 1.3	- 6.8	+ 1.6	+ 1.8	- 0.4	+ 0.6	- 0.1
Mid-February	- 2.8	- 0.7	- 3.7	+ 0.5	+ 0.8	- 2.1	- 1.4	- 1.7
Mid-March	- 3.7	- 1.7	- 6.8	- 0.3	+ 0.1	- 3.0	- 2.3	- 2.6
Mid-April	- 3.8	- 3.2	- 4.9	- 0.3	-	- 3.9	- 3.4	- 3.5
Mid-May	- 4.5	- 4.8	- 10.5	- 1.2	- 0.9	- 5.2	- 4.1	- 4.7
Mid-June	- 5.0	- 5.6	- 11.3	- 1.6	- 1.3	- 5.9	- 4.8	- 5.4
Mid-July	- 5.5	- 6.2	- 13.4	- 2.0	- 1.6	- 6.4	- 5.1	- 5.9
Mid-August	- 5.0	- 6.8	- 11.4	- 1.8	- 1.5	- 6.5	- 5.4	- 5.9
Mid-September	- 5.3	- 7.5	- 11.7	- 2.4	- 2.2	- 7.1	- 6.1	- 6.5
Mid-October	- 5.2	- 7.7	- 10.5	- 2.4	- 2.1	- 7.2	- 6.2	- 6.6
Mid-November	- 4.9	- 6.3	- 3.7	- 2.2	- 2.1	- 6.2	- 5.9	- 5.7
Mid-December	- 4.8	- 5.1	+ 2.4	- 2.2	- 1.9	- 5.4	- 5.7	- 5.0
Year	- 4.3	- 4.6	- 7.9	- 1.2	- 1.0	- 5.0	- 4.1	- 4.5
2010 Mid-January	- 3.4	- 4.4	+ 8.8	- 2.2	- 1.9	- 4.2	- 5.0	- 3.9
Mid-February	- 3.6	- 2.9	+ 6.3	- 2.1	- 2.1	- 3.4	- 4.1	- 3.2
Mid-March	- 3.3	- 2.8	+ 9.1	- 2.2	- 2.2	- 3.4	- 4.1	- 3.1
Mid-April	- 2.9	- 1.4	+ 9.1	- 2.2	- 2.1	- 2.2	- 3.1	- 2.1
Mid-May	- 2.8	+ 0.5	+ 13.7	- 1.6	- 1.6	- 1.2	- 2.3	- 1.1
Mid-June	- 3.1	+ 0.9	+ 9.5	- 1.8	- 1.8	- 1.0	- 1.9	- 0.9
Mid-July	- 2.0	+ 1.4	+ 9.8	- 1.0	- 1.0	- 0.2	- 1.1	- 0.1
Mid-August	- 2.1	+ 2.3	+ 7.9	- 1.0	- 1.1	+ 0.2	- 0.4	+ 0.2
Mid-September	- 1.6	+ 2.1	+ 8.0	- 0.9	- 0.9	+ 0.4	- 0.2	+ 0.5
Mid-October	- 0.8	+ 2.1	+ 10.8	- 0.5	- 0.6	+ 0.8	- 0.2	+ 0.7

1 Housing includes rents, waste collection & disposal charges, mortgage interest, materials for repairs & decoration and house insurance.

2 Energy products includes electricity, gas, other domestic and transport fuels.

Table 17 Groceries and Non-Groceries Order Items (Former)

Period	Groceries Order Items ¹			Non-Groceries Order Items ²			Groceries Order and Non-Groceries Order Items		
	Percentage Change			Percentage Change			Percentage Change		
	Current base Dec. 2006	One month	12 months	Current base Dec. 2006	One month	12 months	Current base Dec. 2006	One month	12 months
2008 Mid-January	106.6	+ 0.5	+ 6.3	102.0	+ 0.6	+ 1.9	105.2	+ 0.5	+ 5.0
Mid-February	108.5	+ 1.8	+ 8.1	102.7	+ 0.7	+ 2.4	106.8	+ 1.5	+ 6.5
Mid-March	109.4	+ 0.8	+ 8.4	103.5	+ 0.8	+ 4.0	107.7	+ 0.8	+ 7.2
Mid-April	109.5	+ 0.1	+ 7.6	103.7	+ 0.2	+ 3.1	107.8	+ 0.1	+ 6.3
Mid-May	109.8	+ 0.3	+ 7.5	104.3	+ 0.6	+ 2.9	108.1	+ 0.3	+ 6.1
Mid-June	109.7	- 0.1	+ 7.0	103.9	- 0.4	+ 2.0	108.0	- 0.1	+ 5.6
Mid-July	109.4	- 0.3	+ 6.5	103.7	- 0.2	+ 2.2	107.7	- 0.3	+ 5.3
Mid-August	109.4	-	+ 6.4	102.9	- 0.8	+ 1.5	107.5	- 0.2	+ 5.0
Mid-September	109.3	- 0.1	+ 6.2	102.6	- 0.3	+ 0.8	107.3	- 0.2	+ 4.6
Mid-October	109.0	- 0.3	+ 4.6	103.0	+ 0.4	+ 1.1	107.2	- 0.1	+ 3.6
Mid-November	110.4	+ 1.3	+ 4.7	102.7	- 0.3	+ 1.1	108.1	+ 0.8	+ 3.7
Mid-December	110.2	- 0.2	+ 3.9	102.5	- 0.2	+ 1.1	107.9	- 0.2	+ 3.1
Year	109.3		+ 6.4	103.1		+ 2.0	107.5		+ 5.2
2009 Mid-January	110.4	+ 0.2	+ 3.6	103.7	+ 1.2	+ 1.7	108.4	+ 0.5	+ 3.0
Mid-February	110.2	- 0.2	+ 1.6	103.0	- 0.7	+ 0.3	108.1	- 0.3	+ 1.2
Mid-March	109.6	- 0.5	+ 0.2	102.5	- 0.5	- 1.0	107.5	- 0.6	- 0.2
Mid-April	108.8	- 0.7	- 0.6	101.2	- 1.3	- 2.4	106.6	- 0.8	- 1.1
Mid-May	108.6	- 0.2	- 1.1	100.4	- 0.8	- 3.7	106.2	- 0.4	- 1.8
Mid-June	108.0	- 0.6	- 1.5	99.0	- 1.4	- 4.7	105.3	- 0.8	- 2.5
Mid-July	107.2	- 0.7	- 2.0	96.7	- 2.3	- 6.8	104.1	- 1.1	- 3.3
Mid-August	106.6	- 0.6	- 2.6	95.3	- 1.4	- 7.4	103.3	- 0.8	- 3.9
Mid-September	105.6	- 0.9	- 3.4	93.8	- 1.6	- 8.6	102.1	- 1.2	- 4.8
Mid-October	104.9	- 0.7	- 3.8	93.4	- 0.4	- 9.3	101.5	- 0.6	- 5.3
Mid-November	104.1	- 0.8	- 5.7	92.5	- 1.0	- 9.9	100.7	- 0.8	- 6.8
Mid-December	102.9	- 1.2	- 6.6	91.9	- 0.6	- 10.3	99.6	- 1.1	- 7.7
Year	107.3		- 1.8	97.8		- 5.1	104.4		- 2.9
2010 Mid-January	102.5	- 0.4	- 7.2	92.3	+ 0.4	- 11.0	99.5	- 0.1	- 8.2
Mid-February	101.9	- 0.6	- 7.5	92.4	+ 0.1	- 10.3	99.1	- 0.4	- 8.3
Mid-March	101.5	- 0.4	- 7.4	92.0	- 0.4	- 10.2	98.7	- 0.4	- 8.2
Mid-April	101.2	- 0.3	- 7.0	92.1	+ 0.1	- 9.0	98.5	- 0.2	- 7.6
Mid-May	101.2	-	- 6.8	92.7	+ 0.7	- 7.7	98.7	+ 0.2	- 7.1
Mid-June	101.2	-	- 6.3	92.5	- 0.2	- 6.6	98.6	- 0.1	- 6.4
Mid-July	101.7	+ 0.5	- 5.1	92.8	+ 0.3	- 4.0	99.0	+ 0.4	- 4.9
Mid-August	101.7	-	- 4.6	92.0	- 0.9	- 3.5	98.8	- 0.2	- 4.4
Mid-September	101.7	-	- 3.7	91.7	- 0.3	- 2.2	98.7	- 0.1	- 3.3
Mid-October	102.2	+ 0.5	- 2.6	91.5	- 0.2	- 2.0	99.0	+ 0.3	- 2.5

¹ Groceries Order Items included elements of Food & Non-Alcoholic Beverages, Off-Licence Alcohol and Household Non-Durable Goods.

² Non-Groceries Order Items included elements of Foods & Non-Alcoholic Beverages and Household Non-Durable Goods

Background Notes – Consumer Price Index

- Definition** The Consumer Price Index is designed to measure the change in the average level of prices (inclusive of all indirect taxes) paid for consumer goods and services by all private households in the country and by foreign tourists holidaying in Ireland.
- Consumer Price Index (CPI)** Over 50,000 prices are collected for a representative basket consisting of 616 headings which cover over 1,000 different items in a fixed panel of retail and service outlets throughout the country during the week containing the second Tuesday of each month. The dates to which the October index relates are Monday 11th to Tuesday 19th October, 2010.
- Scope of the Index**
- (i) **Population Coverage:** All private households in the state and the expenditure of foreign tourists within Ireland. It does not include the expenditure of persons in institutions and other non private households. Expenditure which occurs abroad by Irish residents is also excluded. In statistical terms coverage is referred to as the domestic concept.
 - (ii) **Geographic Coverage:** Covers the whole of the Republic of Ireland. Pricing takes place in 84 locations (cities and towns) throughout the country. These sampling points are located in Dublin city and county, the four regional cities of Cork, Limerick, Galway and Waterford, approx. 80% of towns with a population of 10,000 and over, approx. 70% of towns between 5,000 and 9,999 and a smaller proportion below this threshold. The results are weighted to represent the distribution of the population and its related consumer expenditure.
 - (iii) **Item Coverage:** All goods and services bought by the reference population for the purposes of consumption are included in the index. Expenditure on capital assets and investments, gambling and certain other activities are however excluded. Over 1,000 different varieties are priced and then aggregated into 616 item headings and 12 group headings based on the COICOP classification. With each rebase the coverage of goods and services is reviewed to ensure that it continues to be representative of consumer tastes and purchasing practices.
- Price Collection** Personal visits are made to retail outlets by some 100 part-time pricers on a monthly basis. Approximately 50,000 price quotations are gathered in this way. In addition, 114 special inquiries covering items such as utility charges and services are conducted by post and telephone. Most prices are collected monthly, some quarterly and others annually. The CSO supplies general specifications to price collectors and collectors are free initially to select a brand and in certain cases, size. This allows for a wide variety of different brands of the same item to be priced throughout the country. Once selected, the same item/brand is priced on a monthly basis in order to ensure matched price quotations. If an item disappears, substitution can occur but that price is excluded until matched prices are available for the same comparable item for two consecutive months. The CSO wishes to put on record its appreciation of the co-operation and assistance it receives from retail outlets and other business concerns.
- CPI Weights** The CPI measures in index form the monthly changes in the cost of purchasing a fixed representative 'basket' of consumer goods and services (i.e. Laspeyres formula). The representative share of each item in this basket is proportional to the average amount purchased by all households in the country as determined by the Household Budget Survey and by foreign tourists in this country using estimates of expenditure by tourists across a range of consumer goods and services. Individual items typically purchased by foreign tourists while holidaying in Ireland such as hotel accommodation and meals out have been adjusted to take account of the additional tourist expenditure. Identical items are priced in the same outlet on each occasion so that changes in the cost of this constant basket reflect only pure price changes.

Background Notes – Consumer Price Index (continued)

Rebase The index has been rebased with effect from December 2006, the tenth series since the foundation of the State.

The rebase of the current CPI resulted in a number of methodological changes:

- Updating the expenditure weights;
- A revision of the sample of goods and services;
- An update of the sample of areas priced.

Classification The classification used in the CPI is based on a version of COICOP – COICOP HICP, the Classification of Individual Consumption by Purpose. This replaced the former national classification which was used up to December 2001. The COICOP classification breaks consumer expenditure into twelve different categories covering a comprehensive range of consumer goods and services. Indices for the previous national classification are no longer published as of December 2006. The data, however, will continue to be made available on the CSO website (www.cso.ie) and by request to the Consumer Prices Section (cpi@cso.ie).

Methodological Details A full methodological description of the new series is available in the CPI 2006 Introduction to Series booklet which is published on the website at http://www.cso.ie/surveysandmethodologies/documents/pdf_docs/introduction_to_series_base_december_2006.pdf

Goods and Services The consumer basket can be split into two constituent parts - goods and services according to the following definitions.

Goods Goods are defined as non service items usually purchased and transportable from a retail outlet - the basket excluding services.

Services Services include electricity, gas, telecommunications and other public utilities, alcoholic beverages consumed on licensed premises, meals out, accommodation services, public transport, medical fees, insurances, education fees, hairdressing & other personal services, childcare & social protection, entertainment & recreation services, mortgage interest & rents, package holidays and other miscellaneous services.

Utilities and Local Charges Includes electricity, gas, landline telecommunications and waste collection & disposal charges.

Mortgage Interest In line with normal practice for a fixed base price index, the current approach to measuring mortgage interest in the CPI reflects the situation in the base reference period December 2006 when the standard variable rate was dominant. Subsequently, tracker mortgages have become more popular. This did not give rise to any difficulties while the standard variable and tracker mortgage interest rates moved broadly in line with one another, which would be the normal expectation. However, the decoupling that has taken place since August 2009 has resulted in dramatically different trends emerging. For example, between September 2009 and September 2010 the standard variable rate increased from 2.93% to 3.66% whereas the tracker rate did not change. The Mortgage Interest component of the CPI, which is largely determined by the trend in the standard variable rate, increased by 25.1% as a result and contributed +1.25% to the overall change in the All Items index. It is crudely estimated that the latter impact would have been reduced by between 0.2% and 0.5% had the Mortgage Interest component been calculated on a current weighting basis. Users should take this “weighting effect” into account in interpreting the mortgage interest related movements in the index.

Background Notes – COICOP Classification

Prior to the introduction of the December 2001 based series in January 2002 the CPI used a national classification while the EU Harmonised Index of Consumer Prices (HICP) used COICOP/HICP. To ensure greater comparability CPI and the HICP have both used the COICOP/HICP classification since December 2001 (Classification of Individual Consumption by Purpose - adapted for the purposes of the EU HICP).

The COICOP classification is based on 12 main subgroups.

01 Food and Non Alcoholic Beverages	Food and non alcoholic beverages purchased in supermarkets, small shops, speciality shops and petrol station forecourt outlets. It excludes meals out which are covered under 11 Restaurants and Hotels.
02 Alcoholic Beverages and Tobacco	Includes alcoholic beverages purchased in off licences and supermarkets but excludes alcohol consumed on or within a licensed premises which is classified under 11 Restaurants and Hotels.
03 Clothing and Footwear	Mens, ladies and childrens clothing and footwear, sports and leisurewear and services such as laundry and dry cleaning, shoe repair, dress hire and alteration.
04 Housing, Water, Electricity, Gas and Other Fuels	This group covers rents, mortgage interest repayments, local authority service charges, goods and services for maintaining, decorating and repairing dwellings and domestic energy products such as electricity, gas and solid fuels.
05 Furnishings, Household Equipment and Routine Household Maintenance	This category covers household items such as furniture, carpets and other floor coverings, house textiles and soft furnishings, household electrical appliances, and other household items such as utensils, tools, garden equipment and non-durable items for cleaning, washing and other day to day household activity. Also included in this category are domestic services such as cleaning and other services.
06 Health	Health includes medical products, appliances and equipment, hospital charges and out patient services supplied by doctors, dentists, opticians and practitioners of alternative and complimentary medicine.
07 Transport	Includes the purchase of new and second hand vehicles, spare parts, car maintenance, fuels and lubricants, public transport and services such as parking, motor association subscriptions, car wash, toll charges, driving tests, licences and car hire.
08 Communications	Post and telecommunications.
09 Recreation and Culture	All goods and services connected with recreation and culture and includes items such as audio visual and photographic equipment, computers, music and DVDs, sports and recreation goods, games and toys, items connected with gardening and pets, recreational, sporting and cultural activities and events, newspapers and other reading material, package holidays and other items connected with recreation and culture.
10 Education	Covers all aspects of education including primary, secondary, third level and other education and training such as night courses, play schools and examination fees.
11 Restaurants and Hotels	This category covers the following areas: meals in restaurants and hotels; fast food and takeaways; cafes; canteens; alcohol consumed on or within a licensed premises and accommodation services supplied by hotels, guesthouses and hostels.
12 Miscellaneous Goods and Services	This remaining category covers a wide range of items including hairdressing and other grooming; goods for hygiene, hair and body care; personal goods such as jewellery, handbags and wallets; childcare and other social protection services; insurance, financial services and other services including funerals, weddings, legal and professional services.