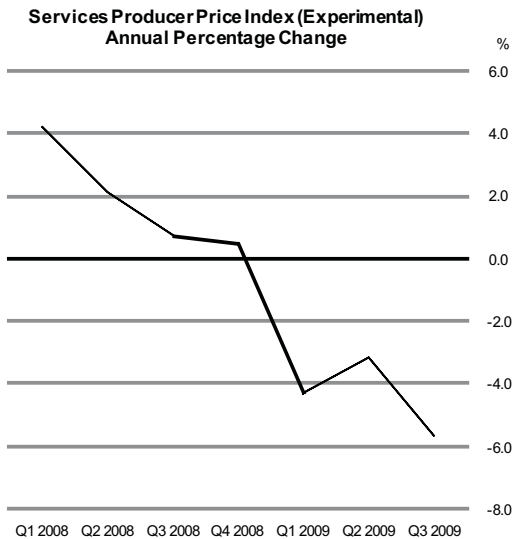




## Services Producer Price Index

### Experimental (Selected Services) Quarter 3 2009



#### Services Producer Price Index (Experimental)

|                | Price Index<br>(Year 2006 =100) | % Quarterly<br>change | % Annual<br>change |
|----------------|---------------------------------|-----------------------|--------------------|
| <b>Q1 2009</b> | 104.7                           | -1.7%                 | -4.3%              |
| <b>Q2 2009</b> | 104.1                           | -0.6%                 | -3.2%              |
| <b>Q3 2009</b> | 101.7                           | -2.3%                 | -5.7%              |

### Services Producer Prices down 5.7% in the year to Quarter 3 2009

The experimental Services Producer Price Index (SPPI) measures changes in the average prices charged by domestic service producers to other businesses for a selected range of services. These individual price indices are aggregated together to create a "service industry" index that is limited in coverage. The indices are still under development and may be subject to methodological improvement. Figures should therefore be treated as provisional and subject to revision. These indices are being published to engage users in the ongoing development of the SPPI methodology.

Services prices in Quarter 3 2009, as measured by the experimental SPPI, were on average 5.7% lower in the year when compared with the same period last year.

The most notable changes in the year were: Architecture, Engineering and Technical Testing (-9.8%), Computer Programming and Consultancy (-8.5%), Advertising, Media Representation and Market Research (-7.7%), Air Transport (-4.9%), Security and Investigation (-4.3%), Warehousing, Storage and Cargo Handling (-3.5%) and Legal, Accounting, Public Relations and Business Management Consultancy (-3.3%).

Services Prices decreased by 2.3% in the quarter. This compares to a decrease of 0.6% recorded in Q2 2009.

The most significant quarterly price decreases were in Computer Programming and Consultancy (-6.2%), Warehousing, Storage and Cargo Handling (-2.8%) and Air Transport (-2.6%). There were increases in Sea & Coastal Transport (+4.4%) and Freight Transport by Road (+2.4%).

The main factors contributing to the largest quarterly changes, as identified by respondents were as follows:

- ◆ Computer programming and consultancy – Increased competition and rate reductions negotiated by customers led to decreases in prices charged.
- ◆ Sea and Coastal Transport – Increases in carrier costs and volume of freight led to higher prices charged in the quarter.
- ◆ Warehousing, Storage and Cargo Handling – Market forces led to reductions in prices charged.

Published by the Central Statistics Office, Ireland.

Ardee Road  
Dublin 6  
Ireland

Skehard Road  
Cork  
Ireland

LoCall: 1890 313 414 (ROI)  
0870 876 0256 (UK/NI)

Tel: +353 1 498 4000  
Fax: +353 1 498 4229

Tel: +353 21 453 5000  
Fax: +353 21 453 5555

Both offices may be contacted through any of these telephone numbers.

CSO on the Web: [www.cso.ie](http://www.cso.ie)  
and go to  
Economy: Prices

Director General: Gerard O'Hanlon

Enquiries:

SPPI Statistics SPPI Section, (021) 453 5447  
servicesprices@cso.ie

Queries and Sales Information Section, (021) 453 5021  
information@cso.ie

Databank, (021) 453 5650/453 5499  
databank@cso.ie

© Central Statistics Office  
The contents of this release may be quoted provided the source is given clearly and accurately. Reproduction for own or internal use is permitted.

For more information contact Niall O Hanlon at 021 453 5207 or Ken Kennedy at 021 453 5447

**Table 1 Services Producer Price Index (All Sectors)**

| Period      | SPPI Current base<br>2006 = 100 | Quarterly         | Annual            |
|-------------|---------------------------------|-------------------|-------------------|
|             |                                 | %                 | %                 |
| <b>2006</b> |                                 |                   |                   |
| Quarter 1   | 98.2                            |                   |                   |
| Quarter 2   | 98.9                            | 0.7               |                   |
| Quarter 3   | 101.8                           | 2.9               |                   |
| Quarter 4   | 101.1                           | -0.7              |                   |
| <b>2007</b> |                                 |                   |                   |
| Quarter 1   | 105.0                           | 3.9               | 6.9               |
| Quarter 2   | 105.3                           | 0.3               | 6.5               |
| Quarter 3   | 107.0                           | 1.6               | 5.1               |
| Quarter 4   | 106.0                           | -0.9              | 4.8               |
| <b>2008</b> |                                 |                   |                   |
| Quarter 1   | 109.4                           | 3.2               | 4.2               |
| Quarter 2   | 107.5                           | -1.7              | 2.1               |
| Quarter 3   | 107.8 <sup>1</sup>              | 0.3 <sup>1</sup>  | 0.7 <sup>1</sup>  |
| Quarter 4   | 106.5 <sup>1</sup>              | -1.2 <sup>1</sup> | 0.5 <sup>1</sup>  |
| <b>2009</b> |                                 |                   |                   |
| Quarter 1   | 104.7 <sup>1</sup>              | -1.7              | -4.3 <sup>1</sup> |
| Quarter 2   | 104.1 <sup>1</sup>              | -0.6              | -3.2 <sup>1</sup> |
| Quarter 3   | 101.7                           | -2.3              | -5.7              |

<sup>1</sup> Revised data

**Table 2 Services Producer Price Index (2006 = 100)**

| Sector                              | Freight and Removal by Road | Sea and Coastal Transport | Air Transport <sup>3</sup> | Warehousing, Storage and Cargo Handling | Postal and Courier | Computer Programming and Consultancy |       |
|-------------------------------------|-----------------------------|---------------------------|----------------------------|---|--------------------|--------------------------------------|-------|
| <b>Nace 2 Code<sup>1</sup></b>      | <b>49.4</b>                 | <b>50.1/50.2</b>          | <b>51</b>                  | <b>52.1/52.24</b>                       | <b>53.1/53.2</b>   | <b>62</b>                            |       |
| <b>Sectoral Weights<sup>2</sup></b> | 7.3                         | 2.1                       | 12.7                       | 1.5                                     | 4.7                | 27.3                                 |       |
| <b>Annual average</b>               |                             |                           |                            |   |                    |                                      |       |
| 2006                                | 100.0                       | 100.0                     | 100.0                      | 100.0                                   | 100.0              | 100.0                                |       |
| 2007                                | 102.3                       | 99.6                      | 106.4                      | 102.6                                   | 103.7              | 108.9                                |       |
| 2008                                | 103.5                       | 100.6 <sup>4</sup>        | 115.7                      | 104.8                                   | 108.2              | 104.7                                |       |
| <b>Quarterly</b>                    |                             |                           |                            |   |                    |                                      |       |
| <b>2006</b>                         | Quarter 1                   | 99.6                      | 103.4                      | 99.3                                    | 100.6              | 99.4                                 | 97.2  |
|                                     | Quarter 2                   | 100.0                     | 100.5                      | 101.3                                   | 99.7               | 100.2                                | 97.2  |
|                                     | Quarter 3                   | 100.0                     | 99.0                       | 103.2                                   | 99.1               | 100.4                                | 102.8 |
|                                     | Quarter 4                   | 100.4                     | 97.1                       | 96.2                                    | 100.6              | 100.0                                | 102.8 |
| <b>2007</b>                         | Quarter 1                   | 102.1                     | 95.2                       | 109.2                                   | 100.6              | 102.8                                | 108.1 |
|                                     | Quarter 2                   | 101.9                     | 101.4                      | 105.4                                   | 103.5              | 103.6                                | 109.4 |
|                                     | Quarter 3                   | 102.5                     | 100.1                      | 107.4                                   | 103.1              | 104.2                                | 110.4 |
|                                     | Quarter 4                   | 102.8                     | 101.8                      | 103.7                                   | 103.3              | 104.4                                | 107.6 |
| <b>2008</b>                         | Quarter 1                   | 102.4                     | 100.1                      | 124.0                                   | 105.3              | 106.6                                | 107.4 |
|                                     | Quarter 2                   | 102.3                     | 100.7                      | 116.1                                   | 104.7              | 108.8                                | 103.8 |
|                                     | Quarter 3                   | 104.5                     | 101.1 <sup>4</sup>         | 115.0                                   | 105.0              | 108.8                                | 103.8 |
|                                     | Quarter 4                   | 104.7                     | 100.6 <sup>4</sup>         | 107.8                                   | 104.3              | 108.4                                | 103.8 |
| <b>2009</b>                         | Quarter 1                   | 100.6                     | 94.8 <sup>4</sup>          | 117.0                                   | 103.6              | 106.6                                | 98.4  |
|                                     | Quarter 2                   | 99.1                      | 97.9 <sup>4</sup>          | 112.3                                   | 104.2              | 106.5                                | 101.3 |
|                                     | Quarter 3                   | 101.5                     | 102.2                      | 109.4                                   | 101.3              | 106.6                                | 95.0  |
| <b>Annual percentage change</b>     |                             |                           |                            |   |                    |                                      |       |
| <b>2007</b>                         | Quarter 1                   | 2.5                       | -7.9                       | 10.0                                    | 0.0                | 3.4                                  | 11.2  |
|                                     | Quarter 2                   | 1.9                       | 0.9                        | 4.0                                     | 3.8                | 3.4                                  | 12.6  |
|                                     | Quarter 3                   | 2.5                       | 1.1                        | 4.1                                     | 4.0                | 3.8                                  | 7.4   |
|                                     | Quarter 4                   | 2.4                       | 4.8                        | 7.8                                     | 2.7                | 4.4                                  | 4.7   |
| <b>2008</b>                         | Quarter 1                   | 0.3                       | 5.1                        | 13.6                                    | 4.7                | 3.7                                  | -0.6  |
|                                     | Quarter 2                   | 0.4                       | -0.7                       | 10.2                                    | 1.2                | 5.0                                  | -5.1  |
|                                     | Quarter 3                   | 2.0                       | 1.0 <sup>4</sup>           | 7.1                                     | 1.8                | 4.4                                  | -6.0  |
|                                     | Quarter 4                   | 1.8                       | -1.2 <sup>4</sup>          | 4.0                                     | 1.0                | 3.8                                  | -3.5  |
| <b>2009</b>                         | Quarter 1                   | -1.8                      | -5.3 <sup>4</sup>          | -5.6                                    | -1.6               | 0.0                                  | -8.4  |
|                                     | Quarter 2                   | -3.1                      | -2.8 <sup>4</sup>          | -3.3                                    | -0.5               | -2.1                                 | -2.4  |
|                                     | Quarter 3                   | -2.9                      | 1.1                        | -4.9                                    | -3.5               | -2.0                                 | -8.5  |
| <b>Quarterly percentage change</b>  |                             |                           |                            |   |                    |                                      |       |
| <b>2006</b>                         | Quarter 2                   | 0.4                       | -2.8                       | 2.0                                     | -0.9               | 0.8                                  | 0.0   |
|                                     | Quarter 3                   | 0.0                       | -1.5                       | 1.9                                     | -0.6               | 0.2                                  | 5.8   |
|                                     | Quarter 4                   | 0.4                       | -1.9                       | -6.8                                    | 1.5                | -0.4                                 | 0.0   |
| <b>2007</b>                         | Quarter 1                   | 1.7                       | -2.0                       | 13.5                                    | 0.0                | 2.8                                  | 5.2   |
|                                     | Quarter 2                   | -0.2                      | 6.5                        | -3.5                                    | 2.9                | 0.8                                  | 1.2   |
|                                     | Quarter 3                   | 0.6                       | -1.3                       | 1.9                                     | -0.4               | 0.6                                  | 0.9   |
|                                     | Quarter 4                   | 0.3                       | 1.7                        | -3.4                                    | 0.2                | 0.2                                  | -2.5  |
| <b>2008</b>                         | Quarter 1                   | -0.4                      | -1.7                       | 19.6                                    | 1.9                | 2.1                                  | -0.2  |
|                                     | Quarter 2                   | -0.1                      | 0.6                        | -6.4                                    | -0.6               | 2.1                                  | -3.4  |
|                                     | Quarter 3                   | 2.2                       | 0.4 <sup>4</sup>           | -0.9                                    | 0.3                | 0.0                                  | 0.0   |
|                                     | Quarter 4                   | 0.2                       | -0.5 <sup>4</sup>          | -6.3                                    | -0.7               | -0.4                                 | 0.0   |
| <b>2009</b>                         | Quarter 1                   | -3.9                      | -5.8 <sup>4</sup>          | 8.5                                     | -0.7               | -1.7                                 | -5.2  |
|                                     | Quarter 2                   | -1.5                      | 3.3                        | -4.0                                    | 0.6                | -0.1                                 | 2.9   |
|                                     | Quarter 3                   | 2.4                       | 4.4                        | -2.6                                    | -2.8               | 0.1                                  | -6.2  |

<sup>1</sup> Nace Rev 2 statistical classification of economic activities in the European Community<sup>2</sup> Sectoral weights do not total 100 due to rounding differences<sup>3</sup> Air Transport is based on data compiled from the Consumer Price Index<sup>4</sup> Revised data

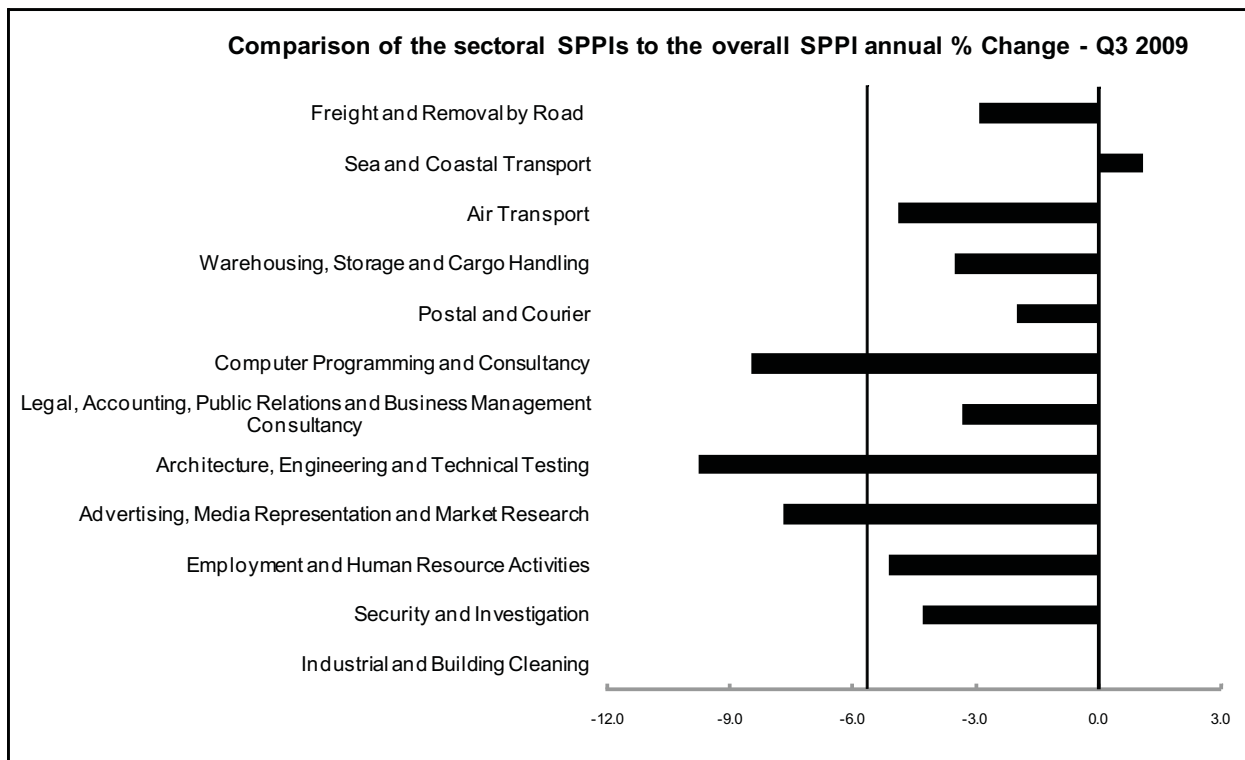
**Table 2 Services Producer Price Index (2006 = 100) continued**

| Sector                               | Legal, Accounting,<br>Public Relations and<br>Business<br>Management<br>Consultancy | Architecture,<br>Engineering and<br>Technical Testing | Advertising, Media<br>Representation<br>and Market<br>Research | Employment<br>and Human<br>Resource<br>Activities | Security and<br>Investigation | Industrial and<br>Building<br>Cleaning |       |
|--------------------------------------|---|---|--|---|-------------------------------|--|-------|
| <b>Nace 2 Code</b> <sup>1</sup>      | <b>69.1/69.2/70.2</b>   | <b>71.1/71.2</b>                                      | <b>73.1/73.2</b>   | <b>78</b>   | <b>80</b>                     | <b>81.2</b>                            |       |
| <b>Sectoral Weights</b> <sup>2</sup> | 21.6  | 11.1  | 4.4  | 4.2   | 1.4                           | 1.5                                    |       |
| <b>Annual average</b>                |   |   |  |   |                               |  |       |
| 2006                                 | 100.0   | 100.0   | 100.0  | 100.0   | 100.0                         | 100.0                                  |       |
| 2007                                 | 104.0   | 107.0   | 105.3  | 103.9   | 103.3                         | 107.1                                  |       |
| 2008                                 | 108.1   | 110.3   | 106.6  | 106.7   | 109.2                         | 112.0                                  |       |
| <b>Quarterly</b>                     |   |   |  |   |                               |  |       |
| <b>2006</b>                          | Quarter 1   | 97.6  | 97.7   | 99.4  | 97.8                          | 99.1                                   | 99.0  |
|                                      | Quarter 2   | 99.3  | 97.7   | 99.4  | 99.5                          | 100.4                                  | 99.1  |
|                                      | Quarter 3   | 101.5   | 102.2  | 99.4  | 101.0                         | 100.3                                  | 100.7 |
|                                      | Quarter 4   | 101.6   | 102.5  | 101.9   | 101.7                         | 100.1                                  | 101.3 |
| <b>2007</b>                          | Quarter 1   | 102.4   | 104.5  | 105.2   | 101.3                         | 102.8                                  | 103.2 |
|                                      | Quarter 2   | 102.6   | 104.6  | 105.3   | 103.9                         | 103.3                                  | 106.7 |
|                                      | Quarter 3   | 105.3   | 109.5  | 105.3   | 104.2                         | 103.3                                  | 109.2 |
|                                      | Quarter 4   | 105.7   | 109.4  | 105.3   | 106.0                         | 103.9                                  | 109.2 |
| <b>2008</b>                          | Quarter 1   | 107.8   | 110.5  | 105.7   | 109.5                         | 109.2                                  | 109.9 |
|                                      | Quarter 2   | 108.0   | 110.5  | 107.1   | 105.3                         | 108.9                                  | 111.8 |
|                                      | Quarter 3   | 109.0   | 110.2  | 107.1   | 105.9                         | 109.7                                  | 113.2 |
|                                      | Quarter 4   | 107.5   | 110.2  | 106.5   | 106.1                         | 109.0                                  | 113.2 |
| <b>2009</b>                          | Quarter 1   | 107.2   | 104.3  | 100.4   | 106.9                         | 105.6                                  | 115.5 |
|                                      | Quarter 2   | 107.0   | 101.5 <sup>3</sup>   | 98.8  | 100.4 <sup>3</sup>            | 105.4                                  | 116.1 |
|                                      | Quarter 3   | 105.4   | 99.4   | 98.8  | 100.5                         | 105.0                                  | 113.2 |
| <b>Annual percentage change</b>      |   |   |  |   |                               |  |       |
| <b>2007</b>                          | Quarter 1   | 4.9   | 7.0  | 5.8   | 3.6                           | 3.7                                    | 4.2   |
|                                      | Quarter 2   | 3.3   | 7.1  | 5.9   | 4.4                           | 2.9                                    | 7.7   |
|                                      | Quarter 3   | 3.7   | 7.1  | 5.9   | 3.2                           | 3.0                                    | 8.4   |
|                                      | Quarter 4   | 4.0   | 6.7  | 3.3   | 4.2                           | 3.8                                    | 7.8   |
| <b>2008</b>                          | Quarter 1   | 5.3   | 5.7  | 0.5   | 8.1                           | 6.2                                    | 6.5   |
|                                      | Quarter 2   | 5.3   | 5.6  | 1.7   | 1.3                           | 5.4                                    | 4.8   |
|                                      | Quarter 3   | 3.5   | 0.6  | 1.7   | 1.6                           | 6.2                                    | 3.7   |
|                                      | Quarter 4   | 1.7   | 0.7  | 1.1   | 0.1                           | 4.9                                    | 3.7   |
| <b>2009</b>                          | Quarter 1   | -0.6  | -5.6   | -5.0  | -2.4                          | -3.3                                   | 5.1   |
|                                      | Quarter 2   | -0.9  | -8.1 <sup>3</sup>  | -7.7  | -4.7 <sup>3</sup>             | -3.2                                   | 3.8   |
|                                      | Quarter 3   | -3.3  | -9.8   | -7.7  | -5.1                          | -4.3                                   | 0.0   |
| <b>Quarterly percentage change</b>   |   |   |  |   |                               |  |       |
| <b>2006</b>                          | Quarter 2   | 1.7   | 0.0  | 0.0   | 1.7                           | 1.3                                    | 0.1   |
|                                      | Quarter 3   | 2.2   | 4.6  | 0.0   | 1.5                           | -0.1                                   | 1.6   |
|                                      | Quarter 4   | 0.1   | 0.3  | 2.5   | 0.7                           | -0.2                                   | 0.6   |
| <b>2007</b>                          | Quarter 1   | 0.8   | 2.0  | 3.2   | -0.4                          | 2.7                                    | 1.9   |
|                                      | Quarter 2   | 0.2   | 0.1  | 0.1   | 2.6                           | 0.5                                    | 3.4   |
|                                      | Quarter 3   | 2.6   | 4.7  | 0.0   | 0.3                           | 0.0                                    | 2.3   |
|                                      | Quarter 4   | 0.4   | -0.1   | 0.0   | 1.7                           | 0.6                                    | 0.0   |
| <b>2008</b>                          | Quarter 1   | 2.0   | 1.0  | 0.4   | 3.3                           | 5.1                                    | 0.6   |
|                                      | Quarter 2   | 0.2   | 0.0  | 1.3   | -3.8                          | -0.3                                   | 1.7   |
|                                      | Quarter 3   | 0.9   | -0.3   | 0.0   | 0.6                           | 0.7                                    | 1.3   |
|                                      | Quarter 4   | -1.4  | 0.0  | -0.6  | 0.2                           | -0.6                                   | 0.0   |
| <b>2009</b>                          | Quarter 1   | -0.3  | -5.4   | -5.7  | 0.8                           | -3.1                                   | 2.0   |
|                                      | Quarter 2   | -0.2  | -2.7 <sup>3</sup>  | -1.6  | -6.1 <sup>3</sup>             | -0.2                                   | 0.5   |
|                                      | Quarter 3   | -1.5  | -2.1   | 0.0   | 0.1                           | -0.4                                   | -2.5  |

<sup>1</sup> Nace Rev 2 statistical classification of economic activities in the European Community<sup>2</sup> Sectoral weights do not total 100 due to rounding differences<sup>3</sup> Revised data

**Table 3 Comparison of the sectoral SPPIs to the overall SPPI annual % change - Q3 2009**

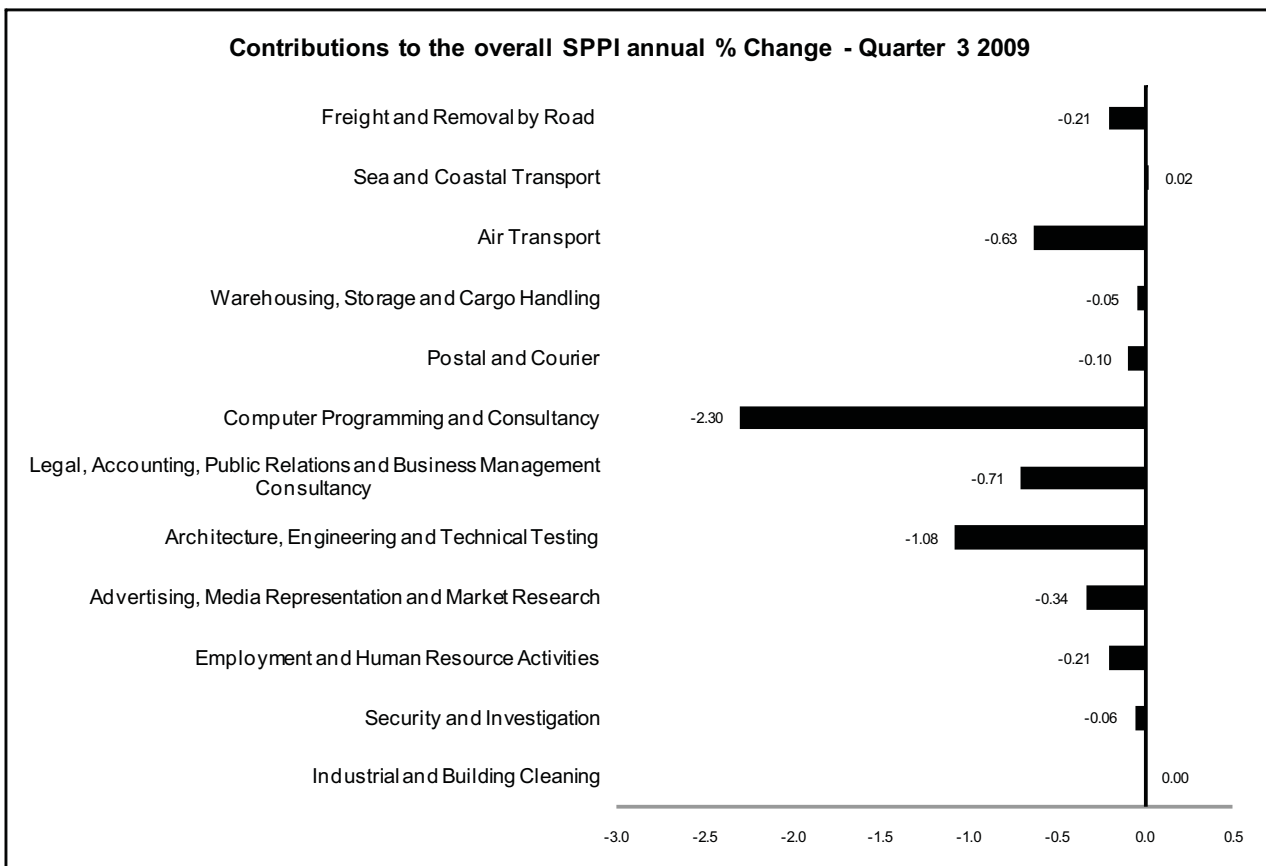
| Sector  | Annual      |
|---|-------------|
| Freight and Removal by Road   | -2.9        |
| Sea and Coastal Transport   | 1.1         |
| Air Transport   | -4.9        |
| Warehousing, Storage and Cargo Handling                                 | -3.5        |
| Postal and Courier  | -2.0        |
| Computer Programming and Consultancy                                    | -8.5        |
| Legal, Accounting, Public Relations and Business Management Consultancy | -3.3        |
| Architecture, Engineering and Technical Testing                         | -9.8        |
| Advertising, Media Representation and Market Research                   | -7.7        |
| Employment and Human Resource Activities                                | -5.1        |
| Security and Investigation  | -4.3        |
| Industrial and Building Cleaning  | 0.0         |
| <b>ALL SECTORS % change</b>   | <b>-5.7</b> |



**Table 4 Contributions to the overall SPPI change - Q3 2009**

| Sector  | Contributions to overall SPPI % change |                          |
|---|--|--------------------------|
|   | Quarterly                              | Annual                   |
| Freight and Removal by Road   | 0.18                                   | -0.21                    |
| Sea and Coastal Transport   | 0.09                                   | 0.02                     |
| Air Transport   | -0.33                                  | -0.63                    |
| Warehousing, Storage and Cargo Handling                                 | -0.04                                  | -0.05                    |
| Postal and Courier  | 0.00                                   | -0.10                    |
| Computer Programming and Consultancy                                    | -1.69                                  | -2.30                    |
| Legal, Accounting, Public Relations and Business Management Consultancy | -0.31                                  | -0.71                    |
| Architecture, Engineering and Technical Testing                         | -0.22                                  | -1.08                    |
| Advertising, Media Representation and Market Research                   | 0.00                                   | -0.34                    |
| Employment and Human Resource Activities                                | 0.01                                   | -0.21                    |
| Security and Investigation  | -0.01                                  | -0.06                    |
| Industrial and Building Cleaning  | -0.04                                  | 0.00                     |
| <b>ALL SECTORS % change</b>   | <b>-2.30<sup>1</sup></b>               | <b>-5.70<sup>1</sup></b> |

<sup>1</sup> Totals may not equal the sum of the categories due to rounding differences.



## Background Notes

**Services Producer Price Index** The Services Producer Price Index (SPPI) is made up of a set of individual price indices that measure changes in the average level of prices charged by producers for a selected range of services supplied to businesses and government. These individual price indices are aggregated together to create a ‘service industry’ index that is limited in coverage. The SPPI is experimental, under development and may be subject to methodological improvement. Figures should therefore be treated as provisional and subject to revision. The index is published to engage users in the ongoing development of the methodology.

**Relevancy** There are two main uses of SPPI; as a short-term indicator of the business cycle and to provide deflators for national accounts.

**Coverage** The services producer price index covers a limited range of service industries as set by the European Parliament and Council Regulation (EC) No 1165/1998 (consolidated).

The following industries are selected (based on the Nace Rev 2 Classification):

### **H – Transportation & Storage**

**49.4** Freight transport by road and removal services

**50.1/50.2** Sea and coastal transport

**51** Air transport

**52.1/52.24** Warehousing, storage and cargo handling

**53.1/53.2** Postal and courier activities

### **J – Information & Communication**

**62** Computer programming, consultancy and related activities

### **M – Professional, Scientific & Technical Activities**

**69.1/69.2/70.2** Legal, accounting, public relations and business management and consultancy

**71.1/71.2** Architecture, engineering and technical testing

**73.1/73.2** Advertising, media representation and market research

### **N – Administrative and Support Services Activities**

**78** Employment activities

**80** Security and investigation activities

**81.2** Industrial and building cleaning

At present the quality of indices for the telecommunications (61) and information service activities (63) are deemed insufficient for publication.

The published index accounts for approximately 43% of the total value of the traded services sector, excluding Wholesale and Retail Trade, when measured by sales.

**Nace Classification** The business activity classifications used in this Statistical release are based on the Statistical Classification of Economic Activities in the European Community i.e. Nace Rev 2. The descriptions of particular NACE Rev 2 sectors are shown in abbreviated form in the release. For further information on the NACE Rev 2 classifications, visit the CSO website: (<http://www.cso.ie/px/u/NACECoder/NACEItems/searchnace.asp>)

**Scope** Regulation (EC) No 1165/1998 (consolidated) requires Member States to provide data on the change in price of services within the business sector. In most cases the CSO collects data on prices charged to Republic of Ireland businesses and government. In several instances prices are collected on the basis of prices charged to all sectors, i.e. ‘Air transport’ and ‘Postal activities under universal service obligation’, as these are representative of prices charged to Business customers.

**Price collection** All indices in the series are based on prices collected on a quarterly basis, using either the average price per quarter or the price on the 15th of the middle month of the reference period.

Prices used in the compilation of these indices are:  
Exclusive of VAT  
Inclusive of surcharges (such as for fuel)

The Air Transport index is constructed using data collected by the Consumer Price Section.

The Employment and Human Resource Activities index is constructed using a combination of survey data and data from the Earnings, Hours and Employment Cost Survey.

**Weights** The SPPI is compiled to base 2006 = 100. Weights at Nace Rev2 for 2006 were estimated by the SPPI Section primarily using data from the CSO Annual Services Inquiry. Weights are 'gross' – they are based on turnover from sales to all sectors, including non-resident.

**Methodology** More information on SPPI's is available from the Eurostat Methodological guide for developing producer price indices for services which can be viewed at:  
<http://www.oecd.org/dataoecd/44/40/36274111.pdf>

Additional methodological information can be found on the website of the Voorburg Group on Services Statistics at: <http://www4.statcan.ca/english/voorburg/>

**Calculating percentage changes in the index** The movement of the SPPI is expressed as percentage change, rather than a change in index points, because index point changes are affected by the level of the index in relation to its base period, whereas percentage changes are not.

The example below illustrates the computation of a percentage change:

| <b>Percentage change calculation</b> |            |
|--------------------------------------|------------|
| Current index                        | 102.6      |
| Less previous index                  | 103.7      |
| Equals in index points               | -1.1       |
| Divided by the previous index        | 103.7      |
| Equals                               | -0.0106    |
| Results multiplied by 100            | 0.0106*100 |
| Equals percentage change             | -1.1%      |