

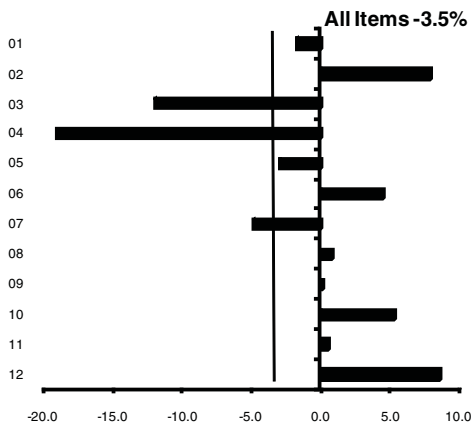


Consumer Price Index

Detailed Sub-Indices Release

April 2009

Comparison of main CPI groups to the overall CPI annual % change - April 2009



CPI (Base: December 2006 = 100)

COICOP Group	% changes	
	One month	12 months
01 Food and Non-Alcoholic Beverages	-1.1	-1.7
02 Alcoholic Beverages and Tobacco	+2.1	+8.0
03 Clothing and Footwear	-3.6	-11.9
04 Housing, Water, Electricity, Gas and Other Fuels	-4.5	-19.1
05 Furnishings, Household Equipment and Routine Household Maintenance	-1.3	-3.0
06 Health	+0.3	+4.5
07 Transport	+1.1	-4.8
08 Communications	-	+0.8
09 Recreation and Culture	+0.3	+0.1
10 Education	-0.2	+5.3
11 Restaurants and Hotels	+0.3	+0.6
12 Miscellaneous Goods and Services	-	+8.7
ALL ITEMS	-0.8	-3.5

Prices fall by 3.5% in the year to April

Consumer Prices in April, as measured by the CPI, decreased by 0.8% in the month. This compares to an increase of 0.1% recorded in April of last year. As a result, prices on average, as measured by the CPI, were 3.5% lower in April compared with April 2008.

The most significant monthly price changes were decreases in *Housing, Water, Electricity, Gas & Other Fuels* (-4.5%), *Clothing & Footwear* (-3.6%), *Furnishings, Household Equipment & Routine Household Maintenance* (-1.3%) and *Food and Non-alcoholic Beverages* (-1.1%). There were increases in *Alcoholic Beverages & Tobacco* (+2.1%) and *Transport* (+1.1%).

The most notable changes in the year were decreases in *Housing, Water, Electricity, Gas & Other Fuels* (-19.1%), *Clothing & Footwear* (-11.9%) and *Transport* (-4.8%). There were increases in *Miscellaneous Goods & Services* (+8.7%), *Alcoholic Beverages & Tobacco* (+8.0%), *Education* (+5.3%) and *Health* (+4.5%).

Services prices fell by 3.2% in the year to April, while Goods fell by 3.8%.

This release provides a detailed analysis of the major price developments within the main CPI commodity groups in tables 1 to 17. Also included are Tables A and B, which compare the contributions towards the annual rate of inflation for the current month with the corresponding period last year.

For more information, contact James Hegarty at 021 453 5445 or Sheila Finucane at 021 453 5438.

Published by the Central Statistics Office, Ireland.

Ardee Road
Dublin 6
Ireland

Skehard Road
Cork
Ireland

LoCall: 1890 313 414 (ROI)
0870 8760256 (UK/NI)

Tel: +353 1 498 4000
Fax: +353 1 498 4229

Tel: +353 21 453 5000
Fax: +353 21 453 5555

Both offices may be contacted through any of these telephone numbers.

CSO on the Web: www.cso.ie
and go to
Economy: Prices

Director General: Gerard O'Hanlon

Enquiries:

CPI Statistics (021) 453 5445, 453 5438
cpi@cso.ie

Queries and Sales Information Section, ext 5021
information@cso.ie

© Central Statistics Office
The contents of this release may be quoted provided the source is given clearly and accurately. Reproduction for own or internal use is permitted.

Table A Comparison of Contributions to the Annual Rate of Inflation for Apr 08 and Apr 09

COICOP Group	Contributions to overall CPI % change				
	Apr '07 - Apr '08		Apr '08 - Apr '09		Difference
01 Food and Non-Alcoholic Beverages	+	0.93	-	0.20	
02 Alcoholic Beverages and Tobacco	+	0.23	+	0.47	+ 0.24
03 Clothing and Footwear	-	0.14	-	0.56	- 0.42
04 Housing, Water, Electricity, Gas and Other Fuels	+	1.67	-	3.51	- 5.18
05 Furnishings, Household Equipment and Routine Household Maintenance	-	0.05	-	0.12	- 0.07
06 Health	+	0.19	+	0.14	- 0.05
07 Transport	+	0.45	-	0.64	- 1.09
08 Communications	+	0.04	+	0.03	- 0.01
09 Recreation and Culture	+	0.11	+	0.01	- 0.10
10 Education	+	0.12	+	0.11	- 0.01
11 Restaurants and Hotels	+	0.50	+	0.08	- 0.42
12 Miscellaneous Goods and Services	+	0.25	+	0.70	+ 0.45
ALL ITEMS % change	+	4.3¹	-	3.5¹	- 7.8¹
Goods	+	1.74	-	1.74	- 3.48
Services ²	+	2.56	-	1.74	- 4.30

¹ The sum may not total exactly due to rounding differences

² Includes Mortgage Interest

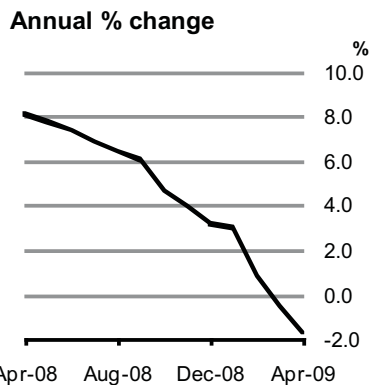
Table B Positive and Negative factors in the comparison of the Annual Rate of Inflation for Apr 08 and Apr 09

COICOP Group	+	COICOP Group	-
12 Miscellaneous Goods and Services	+ 0.45	04 Housing, Water, Electricity, Gas and Other Fuels	- 5.18
02 Alcoholic Beverages and Tobacco	+ 0.24	01 Food and Non-Alcoholic Beverages	- 1.13
		07 Transport	- 1.09
		11 Restaurants and Hotels	- 0.42
		03 Clothing and Footwear	- 0.42
		09 Recreation and Culture	- 0.10
		05 Furnishings, Household Equipment and Routine Household Maintenance	- 0.07
		06 Health	- 0.05
		08 Communication	- 0.01
		10 Education	- 0.01
Total Positive	+ 0.69	Total Negative	- 8.48
Net Difference (Positive less Negative)			- 7.8¹

¹ The net difference may not total exactly due to rounding differences

Consumer Price Index April 2009

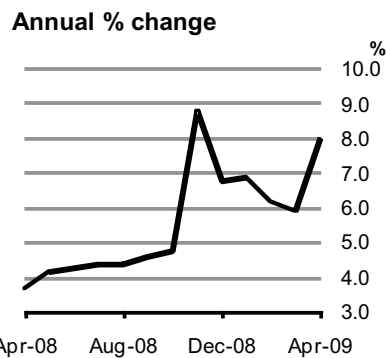
01 Food and Non-Alcoholic Beverages



01 Food and Non-Alcoholic Beverages

Food & Non-Alcoholic Beverages prices decreased by 1.1% in the month and by 1.7% in the year to April 2009. This compares to an increase of 8.1% for the year to April 2008.

In the month, food prices decreased by 1.1% while non-alcoholic beverages prices decreased by 0.9%. In April, price decreases were recorded for other bread & cereals (-4.4%), bread (-4.1%), beef (-3.5%), potatoes (-2.7%), cheese (-2.4%), flour (-2.4%), biscuits (-2.0%), margarine & low fat spreads (-2.0%), pork (-1.4%), frozen, tinned & smoked fish (-1.4%), frozen vegetables (-1.4%), fresh fruit (-1.3%), soft drinks & mineral water (-1.3%), other milk products (-1.3%), fruit juices (-1.3%), poultry (-1.2%), bacon (-1.2%), desserts & ice cream (-1.2%), tinned vegetables (-1.2%), other fruits (-1.1%) and sugar & sweeteners (-0.9%). Price increases were recorded for eggs (+2.4%), lamb (+1.3%), cakes (+1.1%), fresh fish (+0.8%) and other fresh vegetables (+0.7%).

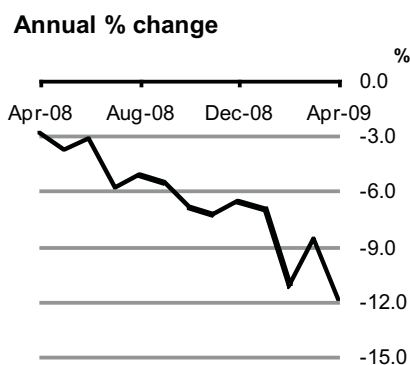


02 Alcoholic Beverages and Tobacco

02 Alcoholic Beverages and Tobacco

Overall prices increased by 2.1% in the month and by 8.0% in the year to April 2009. This compares to an increase of 3.7% for the year to April 2008.

In the month, alcoholic beverages prices increased by 0.3% while tobacco prices increased by 3.5% (arising from the increase in excise duties on cigarettes, announced in the budget). Price increases were recorded for cigarettes (+3.5%), other tobacco products (+1.9%), spirits (+0.9%) and beer (+0.3%). A price decrease was recorded for wine & cider (-0.1%).



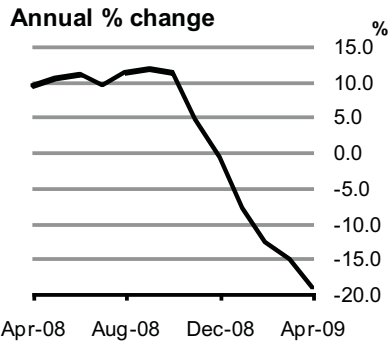
03 Clothing and Footwear

03 Clothing and Footwear

Clothing & Footwear prices decreased by 3.6% in the month and by 11.9% in the year to April 2009. This compares to a decrease of 2.8% for the year to April 2008. In the month, clothing prices decreased by 3.7%, while footwear prices decreased by 2.9%.

In the month, price decreases were recorded for garments (-4.0%), shoes & other footwear (-3.0%), other articles of clothing (-2.3%), dress hire & repair of clothing (-0.3%) and dry cleaning & laundry (-0.1%). A price increase was recorded for repair & hire of footwear (+0.2%).

04 Housing, Water, Electricity, Gas and Other Fuels



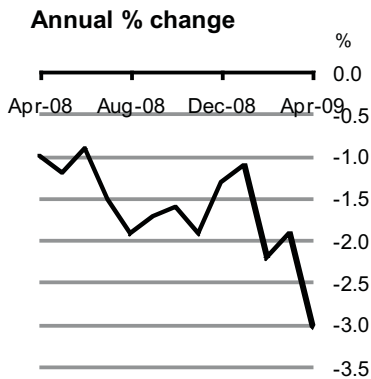
04 Housing, Water, Electricity, Gas and Other Fuels

Housing, Water, Electricity, Gas & Other Fuels costs decreased by 4.5% in the month and by 19.1% in the year to April 2009. This compares to an increase of 9.7% for the year to April 2008.

In the month, price decreases were recorded for mortgage interest (-13.1%), bottled gas (-0.3%) and solid fuels (-0.1%). A price increase was recorded for liquid fuels (i.e. home heating oil) (+8.7%).

The decrease in average mortgage interest repayments is mainly due to the introduction of lower mortgage interest rates by lending institutions following the ECB decision to decrease the base interest rate by 0.5% in March.

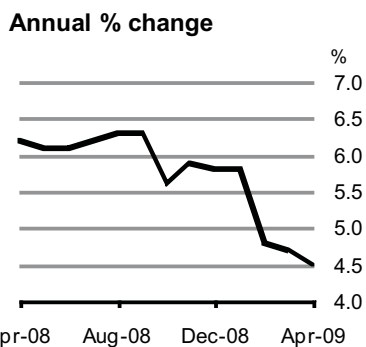
05 Furnishings, Household Equipment and Routine Household Maintenance



05 Furnishings, Household Equipment and Routine Household Maintenance

Furnishings, Household Equipment & Routine Household Maintenance costs decreased by 1.3% in the month and by 3.0% in the year to April 2009. This compares to a decrease of 1.0% for the year to April 2008.

In the month, price decreases were recorded for household textiles (-9.5%), furniture & furnishings (-2.1%), glassware, tableware & household utensils (-2.1%), carpets & other floor coverings (-1.6%), non-durable household goods (-0.9%), small electric household appliances (-0.9%), small tools & miscellaneous accessories (-0.3%) and major household appliances (-0.1%). A price increase was recorded for major tools & equipment (+0.1%).



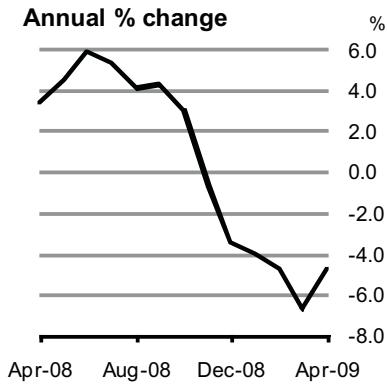
06 Health

06 Health

Overall health costs and charges increased by 0.3% in the month and by 4.5% in the year to April 2009. This compares to an increase of 6.2% for the year to April 2008.

In the month, price increases were recorded for hospital services (+1.0%) and alternative & complementary medicine (+0.1%). Price decreases were recorded for therapeutic appliances & equipment (-0.4%) and other medicines (which includes pain relievers, antacid, cough mixture, vitamins & other supplements) (-0.1%).

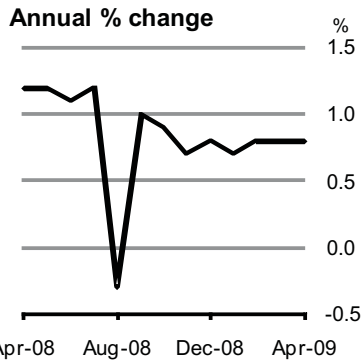
07 Transport



07 Transport

Transport costs increased by 1.1% in the month and decreased by 4.8% in the year to April 2009. This compares to an increase of 3.4% for the year to April 2008.

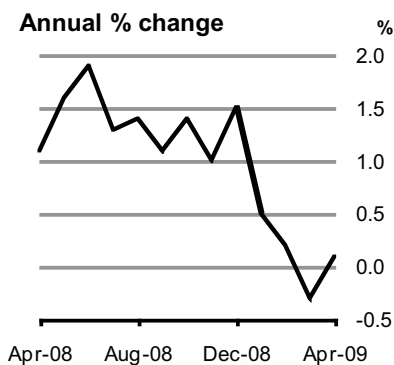
In the month, price increases were recorded for diesel (+6.5%), petrol (+3.6%), other vehicle costs (which includes parking fees and car rental charges) (+2.6%), motor cars (+1.1%), motor oil (+0.5%), bus fares (+0.4%) and maintenance & repair (+0.1%). Price decreases were recorded for sea transport (-19.5%) and air fares (-15.1%).



08 Communications

08 Communications

Overall communication costs remained unchanged in the month and increased by 0.8% in the year to April 2009. This compares to an increase of 1.2% for the year to April 2008.



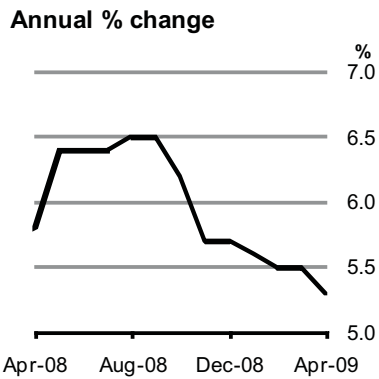
09 Recreation and Culture

09 Recreation and Culture

Overall prices increased by 0.3% in the month and by 0.1% in the year to April 2009. This compares to an increase of 1.1% for the year to April 2008.

In the month, price increases were recorded for recording media (+2.8%), package holidays (+1.6%), books (+0.4%) and newspapers & periodicals (+0.2%). Price decreases were recorded for information processing equipment (-2.2%), games, toys & hobbies (-2.1%), stationery (-1.6%), gardens, plants & flowers (-1.5%), equipment for the reception, recording & reproduction of sound & pictures (-1.4%), photographic & cinematographic equipment & optical instruments (-0.4%), pets & related products (-0.3%) and other entertainment (-0.1%).

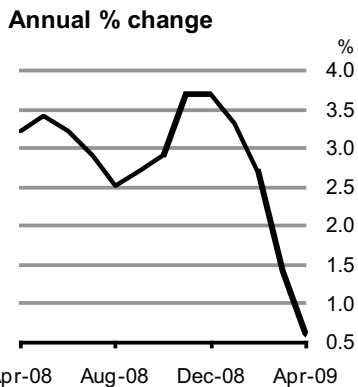
10 Education



Education costs decreased by 0.2% in the month and increased by 5.3% in the year to April 2009. This compares to an increase of 5.8% for the year to April 2008.

In the month, a price decrease was recorded for third level education (-0.3%).

10 Education

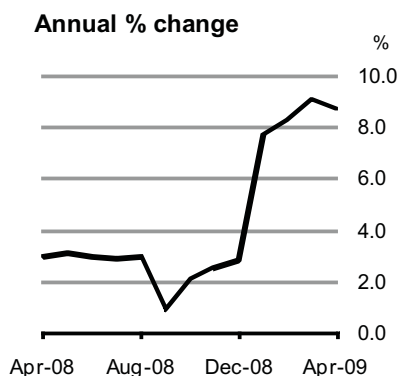


11 Restaurants and Hotels

Prices for the overall category increased by 0.3% in the month and by 0.6% in the year to April 2009. This compares to an increase of 3.2% for the year to April 2008.

In the month, price increases were recorded for canteens (+2.1%) and accommodation services (+0.9%). Price decreases were recorded for beer (-0.1%), restaurants, cafes & fast food (-0.1%), wine & cider (-0.1%) and soft drinks and mineral water (-0.1%).

11 Restaurants and Hotels



12 Miscellaneous Goods and Services

Overall prices remained unchanged in the month and increased by 8.7% in the year to April 2009. This compares to an increase of 3.0% recorded for the year to April 2008.

In the month, price increases were recorded for motor car insurance (+1.8%), childcare (+1.2%), hairdressing (+0.9%) and electric appliances for personal care (+0.1%). Price decreases were recorded for other personal goods (-2.7%), hygiene products (-2.6%), hair products (-1.4%), toilet accessories (-1.3%), health insurance (-1.0%), cosmetics & skincare products (-0.7%), other personal grooming (-0.7%), jewellery, clocks & watches (-0.3%), other social protection (which includes nursing home costs) (-0.2%) and financial services (-0.1%).

12 Miscellaneous Goods and Services

Table 1 Food and Non-Alcoholic Beverages - April 2009

Description	Dec 2006 base expenditure weight %	Current Index	% change 1 mth	% change 12 mths
Food	10.8076	108.0	-1.1	-1.7
Bread and Cereals	2.0242	111.2	-2.1	-3.3
Bread	0.6553	117.8	-4.1	-3.4
Flour	0.0517	140.8	-2.4	-4.0
Biscuits	0.3268	107.2	-2.0	-2.9
Cakes	0.3762	109.6	1.1	2.0
Breakfast cereals	0.2949	102.3	0.1	-7.8
Other cereals	0.0992	118.0	-0.4	0.4
Other bread & cereals	0.2201	102.4	-4.4	-7.7
Meat	2.6729	103.9	-1.3	-2.5
Beef	0.7179	108.2	-3.5	-2.2
Lamb	0.2234	111.5	1.3	0.5
Pork	0.1781	97.4	-1.4	-1.4
Bacon	0.3906	97.5	-1.2	-2.0
Poultry	0.4633	102.1	-1.2	-4.6
Other meat products	0.6996	103.5	0.1	-3.2
Fish	0.3592	101.6	-0.4	-2.3
Fresh fish	0.1814	98.0	0.8	-3.2
Frozen/tinned/smoked fish	0.1778	105.4	-1.4	-1.3
Milk, cheese and eggs	1.3177	122.3	-0.6	-1.5
Milk	0.6567	132.4	-0.2	-0.4
Other milk products	0.2608	114.9	-1.3	-1.5
Cheese	0.2790	107.6	-2.4	-5.0
Eggs	0.1212	117.5	2.4	-1.1
Oils and fats	0.2734	119.6	-1.1	2.2
Butter	0.0813	117.2	0.3	-0.8
Margarine & low fat spreads	0.1448	122.5	-2.0	2.1
Other oils & fats	0.0474	114.6	-0.5	7.9
Fruit	0.8597	100.4	-1.3	-1.1
Fresh fruit	0.7731	99.6	-1.3	-1.1
Other fruits	0.0866	107.7	-1.1	-0.9
Vegetables	1.5782	102.0	-0.6	-1.1
Potatoes	0.3256	90.7	-2.7	-2.8
Other fresh vegetables	0.6079	106.8	0.7	0.8
Tinned vegetables	0.0956	116.3	-1.2	4.6
Frozen vegetables	0.1549	101.6	-1.4	-4.4
Other vegetable products	0.3943	100.7	-0.5	-2.9
Sugar, jam, honey, chocolate and confectionery	0.8912	111.6	-0.4	0.1
Sugar & sweeteners	0.0583	98.1	-0.9	-2.6
Preserves	0.0526	115.9	0.0	0.2
Sweets & chocolate	0.5151	112.9	-0.1	1.3
Desserts & ice cream	0.2652	111.0	-1.2	-1.9
Other food products	0.8312	104.9	-0.1	-0.5
Condiments & sauces	0.2761	106.0	-0.7	-0.7
Soup	0.1102	109.9	0.2	0.7
Miscellaneous food items	0.4449	102.9	0.1	-0.7
Non-alcoholic beverages	0.9347	105.7	-0.9	-1.2
Coffee, tea and cocoa	0.2380	106.2	0.2	-1.8
Tea	0.1417	107.8	0.3	-0.7
Coffee	0.0817	103.0	0.0	-4.1
Cocoa	0.0146	108.5	0.2	0.9
Mineral waters, soft drinks & juices	0.6967	105.5	-1.4	-0.9
Soft drinks & mineral water	0.4523	107.2	-1.3	0.2
Fruit juices	0.2444	102.5	-1.3	-2.9
Total	11.7423	107.8	-1.1	-1.7

Table 2 Alcoholic Beverages and Tobacco - April 2009

Description	Dec 2006 base expenditure weight %	Current Index	% change 1 mth	% change 12 mths
Alcoholic Beverages	2.8725	106.8	0.3	2.9
Spirits	0.5818	110.5	0.9	0.7
Wine & cider	1.5258	104.5	-0.1	3.0
Beer	0.7649	108.6	0.3	4.6
Tobacco	3.1759	119.7	3.5	12.3
Cigarettes	3.1271	119.8	3.5	12.4
Other tobacco products	0.0488	113.0	1.9	8.1
Total	6.0484	113.6	2.1	8.0

Table 3 Clothing and Footwear - April 2009

Description	Dec 2006 base expenditure weight %	Current Index	% change 1 mth	% change 12 mths
Clothing	4.4488	82.5	-3.7	-12.0
Garments	4.2028	81.4	-4.0	-12.8
Other articles of clothing	0.1001	89.5	-2.3	-6.1
Cleaning, repair & hire of clothing	0.1459	110.1	-0.1	3.7
Dry cleaning & laundry	0.1052	111.3	-0.1	4.3
Dress hire & repair of clothing	0.0408	106.8	-0.3	1.6
Footwear	0.9670	82.5	-2.9	-10.8
Shoes & other footwear	0.9537	82.2	-3.0	-11.0
Repair & hire of footwear	0.0133	108.8	0.2	4.1
Total	5.4158	82.5	-3.6	-11.9

Table 4 Housing, Water, Electricity, Gas and Other Fuels - April 2009

Description	Dec 2006 base expenditure weight %	Current Index	% change 1 mth	% change 12 mths
Rents & other housing costs	9.5303	86.5	-8.9	-31.9
Rents	2.8696	98.7	0.0	-13.8
Mortgage interest	6.6607	81.2	-13.1	-38.7
Maintenance & repair of the dwelling	2.4521	103.2	0.0	-0.3
Materials for maint. & repair of dwelling	1.5062	102.7	0.0	0.0
Services for maint. & repair of dwelling	0.9459	104.0	0.0	-0.8
Water supply, refuse & misc. services	0.5117	105.1	0.0	0.0
Electricity, gas & other fuels	4.0142	110.7	1.3	3.0
Electricity	1.5444	124.4	0.0	16.8
Natural gas	0.7560	99.1	0.0	20.1
Bottled gas	0.1177	119.5	-0.3	12.4
Liquid fuels	0.8538	85.8	8.7	-35.0
Solid fuels	0.7423	121.3	-0.1	13.7
Total	16.5083	95.5	-4.5	-19.1

Table 5 Furnishings, Household Equipment and Routine Household Maintenance - April 2009

Description	Dec 2006 base expenditure weight %	Current Index	% change 1 mth	% change 12 mths
Furniture, furnishings, carpets & other flooring	1.0812	87.6	-2.0	-6.0
Furniture & furnishings	0.9467	88.7	-2.1	-5.2
Carpets & other floor coverings	0.1345	80.1	-1.6	-11.2
Household textiles	0.2424	80.0	-9.5	-15.4
Household appliances	1.0459	93.9	-0.2	-2.4
Major household appliances	0.8435	93.3	-0.1	-2.1
Small electric household appliances	0.1285	92.3	-0.9	-2.6
Repair of household appliances	0.0740	104.6	0.0	-3.8
Glassware, tableware & hsehd utensils	0.2577	89.5	-2.1	-5.9
Tools & equipment for house & garden	0.3627	98.0	-0.2	-1.4
Major tools & equipment	0.0808	97.9	0.1	-1.6
Small tools & misc. accessories	0.2820	98.0	-0.3	-1.3
Goods & services for routine hsehd maint.	1.4321	102.9	-0.5	0.9
Non-durable household goods	0.6683	101.5	-0.9	-1.7
Domestic & household services	0.7638	104.2	0.0	3.3
Total	4.4221	94.6	-1.3	-3.0

Table 6 Health - April 2009

Description	Dec 2006 base expenditure weight %	Current Index	% change 1 mth	% change 12 mths
Medical products, appliances & equip.	1.1764	100.9	-0.1	0.8
Pharmaceutical products	0.8672	99.5	-0.1	0.5
Prescribed drugs	0.6160	97.5	0.0	0.2
Other medicines	0.2512	104.5	-0.1	1.2
Other medical products	0.0456	103.1	0.0	-0.5
Therapeutic appliances & equip	0.2637	105.0	-0.4	1.8
Outpatient services	1.0313	113.6	0.1	3.7
Medical services	0.6684	115.7	0.1	4.0
Doctors' fees	0.4792	117.0	0.0	5.3
Alternative & complementary medicine	0.1893	112.4	0.1	0.8
Dental services	0.3628	109.6	0.0	3.1
Hospital services	0.9459	125.8	1.0	9.1
Total	3.1536	112.5	0.3	4.5

Table 7 Transport - April 2009

Description	Dec 2006 base expenditure weight %	Current Index	% change 1 mth	% change 12 mths
Purchase of vehicles	5.7319	95.6	1.1	-5.1
Motor cars	5.6398	95.6	1.1	-5.1
Motor cycles	0.0373	100.5	0.0	-0.3
Bicycles	0.0549	96.5	0.0	-1.8
Operation of personal transport equip.	5.9606	106.2	2.7	-6.6
Spare parts & accessories	0.3444	104.6	0.0	0.7
Fuels & lubricants	3.7506	102.1	4.2	-12.7
Petrol	2.9759	103.3	3.6	-11.2
Diesel	0.7604	97.1	6.5	-18.9
Motor oil	0.0143	110.6	0.5	3.5
Maintenance & repair	0.7045	115.9	0.1	5.8
Other services	1.1611	113.9	0.7	4.8
Motor tax	0.8380	114.3	0.0	4.4
Other vehicle costs	0.3173	113.1	2.6	5.8
Driving licences	0.0058	100.9	0.0	0.9
Transport services	1.6008	110.3	-4.1	3.8
Rail transport	0.2189	116.5	0.0	9.0
Road transport	0.9286	113.5	0.1	9.3
Bus fares	0.3926	120.8	0.4	10.9
Taxi	0.5360	108.2	0.0	8.2
Air transport	0.4009	101.0	-15.1	-9.7
Sea transport	0.0290	84.4	-19.5	-22.0
Combined transport	0.0183	119.1	0.0	8.6
Other transport	0.0051	88.8	0.0	-10.5
Total	13.2933	102.1	1.1	-4.8

Table 8 Communications - April 2009

Description	Dec 2006 base expenditure weight %	Current Index	% change 1 mth	% change 12 mths
Postal services	0.0798	111.6	0.0	0.0
Telephone & communication services	3.3387	101.7	0.0	0.9
Total	3.4184	101.9	0.0	0.8

Table 9 Recreation and Culture - April 2009

Description	Dec 2006 base expenditure weight %	Current Index	% change 1 mth	% change 12 mths
Audio-visual, photographic & information processing equipment	1.0479	73.1	0.7	-14.0
Equipment for the reception, recording & reproduction of sound & pictures	0.2217	65.5	-1.4	-18.7
Photographic & cinematographic equip. & optical instruments	0.2622	67.7	-0.4	-16.0
Information processing equip.	0.1713	58.1	-2.2	-22.9
Recording media	0.3927	87.4	2.8	-7.7
Other major durables for recreation & culture	0.0146	92.4	0.0	-5.3
Other recreational items & equip. incl. gardens & pets	1.5602	95.3	-1.1	-5.6
Games, toys & hobbies	0.5606	81.1	-2.1	-11.6
Equipment for sport, camping & open air recreation	0.1917	96.4	0.0	-2.6
Gardens, plants & flowers	0.4325	101.9	-1.5	-5.1
Pets & related products	0.2570	106.8	-0.3	-0.5
Veterinary & other services for pets	0.1184	111.7	0.0	2.3
Recreational & cultural services	3.2243	109.3	0.0	2.7
Recreational & sporting services	1.1232	112.4	0.0	2.0
Sports admittance	0.1449	110.0	0.0	0.3
Sports participation	0.3086	105.6	0.0	0.4
Club & society subscriptions	0.6697	116.0	0.0	2.9
Cultural services	2.1011	107.6	0.0	3.2
Cinema	0.2026	105.4	0.0	0.8
Nightclubs	0.2299	102.2	0.0	-2.2
Cultural admittance	0.5231	107.2	0.0	7.4
Other entertainment	0.1791	101.9	-0.1	0.5
Television services	0.9664	110.6	0.0	3.3
Newspapers, books & stationery	1.7290	106.2	-0.1	1.0
Books	0.4724	101.6	0.4	-1.6
Newspapers & periodicals	0.9333	110.4	0.2	2.8
Stationery	0.3233	100.7	-1.6	-0.9
Package holidays	2.5280	105.3	1.6	4.6
Total	10.1041	101.8	0.3	0.1

Table 10 Education - April 2009

Description	Dec 2006 base expenditure weight %	Current Index	% change 1 mth	% change 12 mths
Primary education	0.0334	117.0	0.0	7.6
Second level education	0.1695	117.7	0.0	7.1
Third level education	1.0183	111.1	-0.3	4.7
Other education & training	0.8217	111.8	0.0	5.5
Total	2.0429	112.0	-0.2	5.3

Table 11 Restaurants and Hotels - April 2009

Description	Dec 2006 base expenditure weight %	Current Index	% change 1 mth	% change 12 mths
Catering services	13.0297	109.1	0.2	2.6
Restaurants, cafes & licenced premises	11.6723	108.5	-0.1	2.2
Beer	4.7087	109.9	-0.1	3.0
Spirits	1.3776	109.1	0.0	1.9
Wine & cider	1.0197	108.2	-0.1	1.9
Soft drinks & mineral water	0.3351	109.7	-0.1	1.7
Restaurants, cafes & fast-food	4.2313	106.8	-0.1	1.4
Canteens	1.3573	113.5	2.1	6.7
Accommodation services	2.3950	92.5	0.9	-11.1
Total	15.4247	106.5	0.3	0.6

Table 12 Miscellaneous Goods and Services - April 2009

Description	Dec 2006 base expenditure weight %	Current Index	% change 1 mth	% change 12 mths
Personal care	2.3999	102.9	-0.5	-1.6
Hairdressing salons & personal grooming	0.8844	110.4	0.8	1.6
Hairdressing	0.7537	110.0	0.9	1.4
Health & beauty treatments	0.1236	112.6	0.0	2.5
Other personal grooming	0.0071	111.9	-0.7	4.1
Electric appliances for personal care	0.0130	96.6	0.1	-1.8
Other appliances, articles & products for personal care	1.5025	98.5	-1.3	-3.7
Hygiene products	0.3344	101.8	-2.6	-2.7
Hair products	0.2034	95.9	-1.4	-4.5
Cosmetics & skincare products	0.6554	100.2	-0.7	-1.6
Toilet accessories	0.3093	93.1	-1.3	-8.8
Personal goods	0.4855	90.3	-1.6	-4.9
Jewellery, clocks & watches	0.1711	107.8	-0.3	3.1
Other personal goods	0.3143	80.7	-2.7	-10.1
Social protection	1.0171	112.3	1.1	6.3
Childcare	0.9858	111.8	1.2	6.4
Other social protection	0.0314	128.7	-0.2	6.5
Insurance	3.9334	119.0	0.1	18.5
Dwelling insurance	0.7502	123.6	0.0	22.5
Health insurance	1.7726	130.9	-1.0	20.6
Transport insurance	1.4106	101.6	1.8	12.8
Motor cycle insurance	0.0193	86.8	0.0	0.0
Motor car insurance	1.3913	101.8	1.8	12.9
Financial services	0.1262	103.2	-0.1	2.1
Other services	0.4639	109.3	0.0	2.7
Total	8.4260	111.2	0.0	8.7

Table 13 COICOP Groups Consumer Price Monthly Percentage Changes

Period	Food and Non-Alcoholic Beverages	Alcoholic Beverages and Tobacco	Clothing and Footwear	Housing, Water, Electricity, Gas and Other Fuels	Furnishings, Household Equipment and Routine Household Maintenance	Health	Transport	Communications	Recreation and Culture	Education	Restaurants and Hotels	Miscellaneous Goods and Services	All Items CPI
Mid-December 2006	%	%	%	%	%	%	%	%	%	%	%	%	%
% Base Expenditure													
Weights	11.742	6.048	5.416	16.509	4.422	3.154	13.293	3.418	10.104	2.043	15.425	8.426	100.000
2008													
Mid-January	+0.4	+0.8	-12.9	+0.4	-2.9	+2.9	-0.3	-	+0.2	+0.1	-0.2	-0.2	-0.5
Mid-February	+1.8	+0.5	+12.7	+0.7	+2.8	+1.0	+0.8	-	+0.4	+0.3	+0.4	+0.3	+1.2
Mid-March	+0.9	+0.3	+1.7	+1.2	+0.1	+0.1	+2.5	-	+0.1	-	+1.0	+0.2	+0.9
Mid-April	+0.1	+0.1	-0.1	+0.3	-0.2	+0.5	-0.9	-	-0.1	-	+1.1	+0.4	+0.1
Mid-May	+0.4	+0.5	-0.3	+1.6	-0.1	+0.3	+1.2	-	+0.5	+0.6	+0.8	+0.2	+0.8
Mid-June	-0.1	+0.2	-1.1	+1.0	-0.1	-	+2.1	-0.1	+0.1	-	+0.5	+0.1	+0.5
Mid-July	-0.4	+0.1	-10.9	+1.3	-1.4	+0.1	+0.5	-	-0.2	-	+0.2	-0.2	-0.3
Mid-August	-0.3	-	+5.8	+2.5	+0.2	+0.8	-1.6	-	-	+0.2	-0.2	+0.1	+0.5
Mid-September	-0.1	+0.2	+4.3	+0.7	+0.4	+0.1	-0.6	+1.2	-0.1	-	-0.1	-0.1	+0.3
Mid-October	-0.1	+0.2	-2.0	-0.2	-0.5	-0.6	-1.8	-0.1	+0.3	+3.6	+0.1	+1.3	-0.2
Mid-November	+0.5	+3.9	+1.3	-5.4	+0.2	+0.6	-2.2	-0.2	-0.2	+0.8	+0.2	+0.5	-0.9
Mid-December	+0.1	-	-2.7	-4.4	+0.2	-0.1	-2.9	-	+0.5	-	-0.1	+0.2	-1.2
2009													
Mid-January	+0.2	+0.9	-13.2	-7.0	-2.6	+2.8	-0.8	-0.1	-0.8	-	-0.6	+4.6	-1.7
Mid-February	-0.4	-0.2	+7.5	-4.5	+1.7	+0.1	-0.1	+0.1	+0.1	+0.2	-0.2	+0.8	-0.4
Mid-March	-0.5	-	+4.6	-1.7	+0.3	-	+0.5	-	-0.4	-	-0.3	+1.0	-
Mid-April	-1.1	+2.1	-3.6	-4.5	-1.3	+0.3	+1.1	-	+0.3	-0.2	+0.3	-	-0.8

Table 14 COICOP Groups Consumer Price Annual Percentage Changes

Period	Food and Non-Alcoholic Beverages	Alcoholic Beverages and Tobacco	Clothing and Footwear	Housing, Water, Electricity, Gas and Other Fuels	Furnishings, Household Equipment and Routine Household Maintenance	Health	Transport	Communications	Recreation and Culture	Education	Restaurants and Hotels	Miscellaneous Goods and Services	All Items CPI
Mid-December 2006	%	%	%	%	%	%	%	%	%	%	%	%	%
% Base Expenditure													
Weights	11.742	6.048	5.416	16.509	4.422	3.154	13.293	3.418	10.104	2.043	15.425	8.426	100.000
2008 Mid-January	+6.7	+3.3	-4.7	+11.6	-2.6	+5.2	+4.2	+1.2	+1.3	+6.0	+3.2	+1.7	+4.3
Mid-February	+8.5	+3.8	-3.3	+12.0	-1.5	+5.7	+4.7	+1.3	+1.0	+5.9	+3.2	+1.8	+4.8
Mid-March	+9.3	+3.9	-3.6	+12.3	-1.3	+5.7	+5.6	+1.0	+1.2	+5.9	+3.2	+1.9	+5.0
Mid-April	+8.1	+3.7	-2.8	+9.7	-1.0	+6.2	+3.4	+1.2	+1.1	+5.8	+3.2	+3.0	+4.3
Mid-May	+7.8	+4.2	-3.7	+10.6	-1.2	+6.1	+4.5	+1.2	+1.6	+6.4	+3.4	+3.1	+4.7
Mid-June	+7.3	+4.3	-3.1	+11.1	-0.9	+6.1	+5.9	+1.1	+1.9	+6.4	+3.2	+3.0	+5.0
Mid-July	+6.8	+4.4	-5.8	+9.7	-1.5	+6.2	+5.3	+1.2	+1.3	+6.4	+2.9	+2.9	+4.4
Mid-August	+6.4	+4.4	-5.1	+11.5	-1.9	+6.3	+4.1	-0.3	+1.4	+6.5	+2.5	+3.0	+4.3
Mid-September	+6.1	+4.6	-5.5	+12.0	-1.7	+6.3	+4.3	+1.0	+1.1	+6.5	+2.7	+0.9	+4.3
Mid-October	+4.6	+4.8	-6.8	+11.5	-1.6	+5.6	+3.0	+0.9	+1.4	+6.2	+2.9	+2.1	+4.0
Mid-November	+4.0	+8.8	-7.2	+4.8	-1.9	+5.9	-0.7	+0.7	+1.0	+5.7	+3.7	+2.5	+2.5
Mid-December	+3.2	+6.8	-6.5	-0.5	-1.3	+5.8	-3.5	+0.8	+1.5	+5.7	+3.7	+2.8	+1.1
Year	+6.5	+4.8	-4.9	+9.6	-1.6	+6.0	+3.4	+1.0	+1.3	+6.1	+3.1	+2.4	+4.1
2009 Mid-January	+3.0	+6.9	-6.9	-7.9	-1.1	+5.8	-4.0	+0.7	+0.5	+5.6	+3.3	+7.7	-0.1
Mid-February	+0.8	+6.2	-11.2	-12.6	-2.2	+4.8	-4.8	+0.8	+0.2	+5.5	+2.7	+8.3	-1.7
Mid-March	-0.5	+5.9	-8.6	-15.1	-1.9	+4.7	-6.7	+0.8	-0.3	+5.5	+1.4	+9.1	-2.6
Mid-April	-1.7	+8.0	-11.9	-19.1	-3.0	+4.5	-4.8	+0.8	+0.1	+5.3	+0.6	+8.7	-3.5

Table 15 Consumer Price Index Goods and Services by COICOP - April 2009

COICOP	Group	Mid-Dec 2006 % Base Expenditure Weights	% Goods Base Expenditure Weights	% Services Base Expenditure Weights	Index		Percentage changes		
					Goods	Services	Goods 12 Months	Services 12 Months	Overall 12 Months
01	Food and Non Alcoholic Beverages	11.742	11.742	-	107.8	-	-1.7	-	-1.7
02	Alcoholic Beverages and Tobacco	6.048	6.048	-	113.6	-	+8.0	-	+8.0
03	Clothing and Footwear	5.416	5.257	0.159	81.7	110.0	-12.3	+3.7	-11.9
04	Housing, Water, Electricity, Gas and Other Fuels	16.509	3.220	13.289	103.1	93.6	-7.5	-21.8	-19.1
05	Furnishings, Household Equipment and Routine Household Maintenance	4.422	3.557	0.865	92.3	104.3	-4.3	+2.6	-3.0
06	Health	3.154	1.177	1.977	100.9	119.4	+0.8	+6.4	+4.5
07	Transport	13.293	9.827	3.466	98.4	112.6	-8.0	+4.5	-4.8
08	Communications	3.418	0.018	3.400	77.0	102.0	-13.3	+0.9	+0.8
09	Recreation and Culture	10.104	4.233	5.871	93.8	107.6	-4.8	+3.5	+0.1
10	Education	2.043	-	2.043	-	112.0	-	+5.3	+5.3
11	Restaurants and Hotels	15.425	-	15.425	-	106.5	-	+0.6	+0.6
12	Miscellaneous Goods & Services	8.426	2.001	6.425	96.5	115.7	-4.0	+12.5	+8.7
ALL ITEMS		100.000	47.080	52.920	100.2	105.3	-3.8	-3.2	-3.5

Table 16 Consumer Price Annual Percentage Changes for selected CPI Sub-indices

Period	Goods	Services	Energy	CPI excluding	CPI excluding	CPI excluding	CPI excluding	All Items
				Mortgage Interest	Housing	Tobacco	Energy Products	
	%	%	%	%	%	%	%	%
2006 Mid-July	+ 1.7	+ 6.4	+ 10.4	+ 2.7	+ 2.7	+ 4.4	+ 3.7	+ 4.2
Mid-August	+ 1.7	+ 7.0	+ 10.8	+ 3.0	+ 3.0	+ 4.7	+ 3.9	+ 4.5
Mid-September	-	+ 7.5	+ 0.1	+ 2.0	+ 2.0	+ 4.2	+ 4.3	+ 4.0
Mid-October	- 0.6	+ 7.8	- 2.0	+ 2.0	+ 1.9	+ 4.0	+ 4.4	+ 3.9
Mid-November	- 0.3	+ 8.5	+ 0.3	+ 2.2	+ 2.0	+ 4.6	+ 4.8	+ 4.4
Mid-December	+ 1.2	+ 8.0	+ 3.8	+ 2.8	+ 2.7	+ 4.7	+ 5.0	+ 4.9
Year	+ 1.2	+ 6.2	+ 8.2	+ 2.6	+ 2.5	+ 4.0	+ 3.6	+ 4.0
2007 Mid-January	+ 0.6	+ 9.1	+ 4.8	+ 2.7	+ 2.7	+ 4.8	+ 5.2	+ 5.2
Mid-February	-	+ 9.1	+ 1.2	+ 2.5	+ 2.2	+ 4.6	+ 5.1	+ 4.8
Mid-March	+ 0.4	+ 9.3	+ 3.5	+ 2.7	+ 2.5	+ 4.9	+ 5.3	+ 5.1
Mid-April	+ 0.4	+ 9.1	+ 3.5	+ 2.6	+ 2.4	+ 4.8	+ 5.3	+ 5.1
Mid-May	+ 0.3	+ 9.1	+ 2.8	+ 2.6	+ 2.3	+ 4.7	+ 5.1	+ 5.0
Mid-June	+ 0.6	+ 8.9	+ 4.0	+ 2.6	+ 2.3	+ 4.7	+ 5.1	+ 4.9
Mid-July	+ 0.6	+ 8.7	+ 3.7	+ 2.5	+ 2.3	+ 4.7	+ 5.1	+ 5.0
Mid-August	+ 0.2	+ 8.5	+ 1.7	+ 2.2	+ 2.0	+ 4.3	+ 4.9	+ 4.8
Mid-September	+ 1.0	+ 7.9	+ 5.1	+ 2.6	+ 2.4	+ 4.4	+ 4.6	+ 4.6
Mid-October	+ 2.1	+ 7.3	+ 5.7	+ 2.8	+ 2.6	+ 4.5	+ 4.7	+ 4.8
Mid-November	+ 3.5	+ 6.4	+ 10.3	+ 3.4	+ 3.2	+ 4.8	+ 4.6	+ 5.0
Mid-December	+ 2.7	+ 6.5	+ 9.5	+ 3.1	+ 2.8	+ 4.7	+ 4.3	+ 4.7
Year	+ 1.0	+ 8.4	+ 4.6	+ 2.7	+ 2.4	+ 4.6	+ 4.9	+ 4.9
2008 Mid-January	+ 3.3	+ 5.1	+ 8.3	+ 3.0	+ 2.7	+ 4.3	+ 3.9	+ 4.3
Mid-February	+ 3.9	+ 5.6	+ 7.9	+ 3.4	+ 3.3	+ 4.8	+ 4.5	+ 4.8
Mid-March	+ 4.2	+ 5.7	+ 8.6	+ 3.8	+ 3.6	+ 5.0	+ 4.7	+ 5.0
Mid-April	+ 3.8	+ 4.8	+ 7.3	+ 3.5	+ 3.3	+ 4.3	+ 4.1	+ 4.3
Mid-May	+ 4.0	+ 5.3	+ 9.2	+ 3.6	+ 3.6	+ 4.7	+ 4.3	+ 4.7
Mid-June	+ 4.6	+ 5.3	+ 12.6	+ 3.9	+ 3.9	+ 4.9	+ 4.2	+ 5.0
Mid-July	+ 4.2	+ 4.5	+ 13.9	+ 3.6	+ 3.5	+ 4.3	+ 3.5	+ 4.4
Mid-August	+ 3.5	+ 5.3	+ 13.8	+ 3.2	+ 3.3	+ 4.3	+ 3.6	+ 4.3
Mid-September	+ 3.0	+ 5.5	+ 14.3	+ 3.2	+ 3.3	+ 4.2	+ 3.5	+ 4.3
Mid-October	+ 1.8	+ 5.9	+ 11.0	+ 2.8	+ 2.8	+ 3.9	+ 3.4	+ 4.0
Mid-November	+ 0.4	+ 4.2	+ 2.5	+ 2.1	+ 2.4	+ 2.2	+ 2.4	+ 2.5
Mid-December	- 0.9	+ 2.7	- 3.3	+ 1.5	+ 1.7	+ 0.9	+ 1.5	+ 1.1
Year	+ 3.0	+ 5.0	+ 8.8	+ 3.1	+ 3.2	+ 4.0	+ 3.6	+ 4.1
2009 Mid-January	- 1.6	+ 1.3	- 6.8	+ 1.6	+ 1.8	- 0.4	+ 0.6	- 0.1
Mid-February	- 2.8	- 0.7	- 3.7	+ 0.5	+ 0.8	- 2.1	- 1.4	- 1.7
Mid-March	- 3.7	- 1.7	- 6.8	- 0.3	+ 0.1	- 3.0	- 2.3	- 2.6
Mid-April	- 3.8	- 3.2	- 4.9	- 0.3	-	- 3.9	- 3.4	- 3.5

Table 17 Groceries and Non-Groceries Order Items (Former)

Period	Groceries Order Items ¹			Non-Groceries Order Items ²			Groceries Order and Non-Groceries Order Items		
	Percentage Change			Percentage Change			Percentage Change		
	Current base Dec. 2006	One ³ month	12 ³ months	Current base Dec. 2006	One ³ month	12 ³ months	Current base Dec. 2006	One ³ month	12 ³ months
2006 Mid-July	101.1	- 0.3	- 0.1	98.8	+ 0.7	+ 3.1	100.5	-	+ 0.7
Mid-August	101.0	- 0.1	- 0.2	99.0	+ 0.2	+ 3.5	100.5	-	+ 0.8
Mid-September	101.1	-	-	99.5	+ 0.5	+ 3.7	100.6	+ 0.1	+ 0.9
Mid-October	100.9	- 0.2	- 0.2	99.2	- 0.3	+ 4.0	100.4	- 0.2	+ 0.9
Mid-November	100.4	- 0.4	- 0.4	99.1	- 0.1	+ 4.6	100.1	- 0.3	+ 0.9
Mid-December	100.0	- 0.5	- 0.6	100.0	+ 0.9	+ 5.0	100.0	- 0.1	+ 0.9
Year	101.1		+ 0.1	98.3		+ 2.4	100.4		+ 0.7
2007 Mid-January	100.3	+ 0.3	- 0.5	100.1	+ 0.1	+ 5.1	100.2	+ 0.2	+ 0.8
Mid-February	100.4	+ 0.1	- 0.7	100.3	+ 0.2	+ 3.4	100.3	+ 0.1	+ 0.2
Mid-March	100.9	+ 0.5	- 0.4	99.5	- 0.8	+ 2.1	100.5	+ 0.2	+ 0.2
Mid-April	101.8	+ 0.9	+ 0.3	100.6	+ 1.1	+ 3.0	101.4	+ 0.9	+ 0.8
Mid-May	102.1	+ 0.3	+ 0.2	101.4	+ 0.8	+ 2.4	101.9	+ 0.5	+ 0.8
Mid-June	102.5	+ 0.4	+ 1.1	101.9	+ 0.5	+ 3.9	102.3	+ 0.4	+ 1.8
Mid-July	102.7	+ 0.2	+ 1.6	101.5	- 0.4	+ 2.7	102.3	-	+ 1.8
Mid-August	102.8	+ 0.1	+ 1.8	101.4	- 0.1	+ 2.4	102.4	+ 0.1	+ 1.9
Mid-September	102.9	+ 0.1	+ 1.8	101.8	+ 0.4	+ 2.3	102.6	+ 0.2	+ 2.0
Mid-October	104.2	+ 1.3	+ 3.3	101.9	+ 0.1	+ 2.7	103.5	+ 0.9	+ 3.1
Mid-November	105.4	+ 1.2	+ 5.0	101.6	- 0.3	+ 2.5	104.2	+ 0.7	+ 4.1
Mid-December	106.1	+ 0.7	+ 6.1	101.4	- 0.2	+ 1.4	104.7	+ 0.5	+ 4.7
Year	102.7		+ 1.6	101.1		+ 2.8	102.2		+ 1.8
2008 Mid-January	106.6	+ 0.5	+ 6.3	102.0	+ 0.6	+ 1.9	105.2	+ 0.5	+ 5.0
Mid-February	108.5	+ 1.8	+ 8.1	102.7	+ 0.7	+ 2.4	106.8	+ 1.5	+ 6.5
Mid-March	109.4	+ 0.8	+ 8.4	103.5	+ 0.8	+ 4.0	107.7	+ 0.8	+ 7.2
Mid-April	109.5	+ 0.1	+ 7.6	103.7	+ 0.2	+ 3.1	107.8	+ 0.1	+ 6.3
Mid-May	109.8	+ 0.3	+ 7.5	104.3	+ 0.6	+ 2.9	108.1	+ 0.3	+ 6.1
Mid-June	109.7	- 0.1	+ 7.0	103.9	- 0.4	+ 2.0	108.0	- 0.1	+ 5.6
Mid-July	109.4	- 0.3	+ 6.5	103.7	- 0.2	+ 2.2	107.7	- 0.3	+ 5.3
Mid-August	109.4	-	+ 6.4	102.9	- 0.8	+ 1.5	107.5	- 0.2	+ 5.0
Mid-September	109.3	- 0.1	+ 6.2	102.6	- 0.3	+ 0.8	107.3	- 0.2	+ 4.6
Mid-October	109.0	- 0.3	+ 4.6	103.0	+ 0.4	+ 1.1	107.2	- 0.1	+ 3.6
Mid-November	110.4	+ 1.3	+ 4.7	102.7	- 0.3	+ 1.1	108.1	+ 0.8	+ 3.7
Mid-December	110.2	- 0.2	+ 3.9	102.5	- 0.2	+ 1.1	107.9	- 0.2	+ 3.1
Year	109.3		+ 6.4	103.1		+ 2.0	107.5		+ 5.2
2009 Mid-January	110.4	+ 0.2	+ 3.6	103.7	+ 1.2	+ 1.7	108.4	+ 0.5	+ 3.0
Mid-February	110.2	- 0.2	+ 1.6	103.0	- 0.7	+ 0.3	108.1	- 0.3	+ 1.2
Mid-March	109.6	- 0.5	+ 0.2	102.5	- 0.5	- 1.0	107.5	- 0.6	- 0.2
Mid-April	108.8	- 0.7	- 0.6	101.2	- 1.3	- 2.4	106.6	- 0.8	- 1.1

¹ Groceries Order Items included elements of Food & Non-Alcoholic Beverages, Off-Licence Alcohol and Household Non-Durable Goods.

² Non-Groceries Order Items included elements of Foods & Non-Alcoholic Beverages and Household Non-Durable Goods

³ Up to December 2006, one month and twelve month percentage changes are based on the previously published base Dec 2001=100 indices.

Background Notes – Consumer Price Index

- Definition** The Consumer Price Index is designed to measure the change in the average level of prices (inclusive of all indirect taxes) paid for consumer goods and services by all private households in the country and by foreign tourists holidaying in Ireland.
- Consumer Price Index (CPI)** Over 50,000 prices are collected for a representative basket consisting of 616 headings which cover over 1,000 different items in a fixed panel of retail and service outlets throughout the country on the second Tuesday of each month. The date to which the April index relates is Tuesday, 14th April 2009.
- Scope of the Index**
- (i) **Population Coverage:** All private households in the state and the expenditure of foreign tourists within Ireland. It does not include the expenditure of persons in institutions and other non private households. Expenditure which occurs abroad by Irish residents is also excluded. In statistical terms coverage is referred to as the domestic concept.
 - (ii) **Geographic Coverage:** Covers the whole of the Republic of Ireland. Pricing takes place in Dublin and 83 other locations (cities and towns) throughout the country. These sampling points are located in Dublin city and county, the four regional cities of Cork, Limerick, Galway and Waterford, approx. 80% of towns with a population of 10,000 and over, approx. 70% of towns between 5,000 and 9,999 and a smaller proportion below this threshold. The results are weighted to represent the distribution of the population and its related consumer expenditure. The sample is organised on a regional basis for calculation purposes.
 - (iii) **Item Coverage:** All goods and services bought by the reference population for the purposes of consumption are included in the index. Expenditure on capital assets and investments, gambling and certain other activities are however excluded. Over 1,000 different varieties are priced and then aggregated into 616 item headings and 12 group headings based on the COICOP classification. With each rebase the coverage of goods and services is reviewed to ensure that it continues to be representative of consumer tastes and purchasing practices.
- Price Collection** Personal visits are made to retail outlets by some 200 part-time pricers on a monthly basis. Approximately 50,000 price quotations are gathered in this way. In addition, 114 special inquiries covering items such as utility charges and services are conducted by post and telephone. Most prices are collected monthly, some quarterly and others annually. The CSO supplies general specifications to price collectors and collectors are free initially to select a brand and in certain cases, size. This allows for a wide variety of different brands of the same item to be priced throughout the country. Once selected, the same item/brand is priced on a monthly basis in order to ensure matched price quotations. If an item disappears, substitution can occur but that price is excluded until matched prices are available for the same comparable item for two consecutive months. The CSO wishes to put on record its appreciation of the co-operation and assistance it receives from retail outlets and other business concerns.
- CPI Weights** The CPI measures in index form the monthly changes in the cost of purchasing a fixed representative ‘basket’ of consumer goods and services (i.e. Laspeyres formula). The representative share of each item in this basket is proportional to the average amount purchased by all households in the country as determined by the Household Budget Survey and by foreign tourists in this country using estimates of expenditure by tourists across a range of consumer goods and services. Individual items typically purchased by foreign tourists while holidaying in Ireland such as hotel accommodation and meals out have been adjusted to take account of the additional tourist expenditure. Identical items are priced in the same outlet on each occasion so that changes in the cost of this constant basket reflect only pure price changes.

Background Notes – Consumer Price Index (continued)

Rebase The index has been rebased with effect from December 2006, the tenth series since the foundation of the State.

The rebase of the current CPI resulted in a number of methodological changes:

- Updating the expenditure weights;
- A revision of the sample of goods and services;
- An update of the sample of areas priced; and
- A move to a regional structure in the calculation methodology.

Classification The classification used in the CPI is based on a version of COICOP – COICOP HICP, the Classification of Individual Consumption Expenditure by Purpose. This replaced the former national classification which was used up to December 2001. The COICOP classification breaks consumer expenditure into twelve different categories covering a comprehensive range of consumer goods and services. Indices for the previous national classification are no longer published as of December 2006. The data, however, will continue to be made available on the CSO website (www.cso.ie) and by request to the Consumer Prices Section (cpi@cso.ie).

Methodological Details A full methodological description of the new series is available in the CPI 2006 Introduction to Series booklet which is published on the website at http://www.cso.ie/surveysandmethodologies/documents/pdf_docs/introduction_to_series_base_december_2006.pdf

Goods and Services The consumer basket can be split into two constituent parts - goods and services according to the following definitions.

Goods Goods are defined as non service items usually purchased and transportable from a retail outlet - the basket excluding services.

Services Services include electricity, gas, telecommunications and other public utilities, alcoholic beverages consumed on licensed premises, meals out, accommodation services, public transport, medical fees, insurances, education fees, hairdressing & other personal services, childcare & social protection, entertainment & recreation services, mortgage interest & rents, package holidays and other miscellaneous services.

Utilities and Local Charges Includes electricity, gas, landline telecommunications and local authority service charges.

Background Notes – COICOP Classification

Prior to the introduction of the December 2001 based series in January 2002 the CPI used a national classification while the HICP used COICOP/HICP. To ensure greater comparability CPI and the HICP have both used the COICOP/HICP classification since December 2001 (Classification of Individual Consumption by Purpose - adapted for the purposes of the EU HICP).

The COICOP classification is based on 12 main subgroups.

01 Food and Non Alcoholic Beverages	Food and non alcoholic beverages purchased in supermarkets, small shops, speciality shops and petrol station forecourt outlets. It excludes meals out which are covered under 11 Restaurants and Hotels.
02 Alcoholic Beverages and Tobacco	Includes alcoholic beverages purchased in off licences and supermarkets but excludes alcohol consumed on or within a licensed premises which is classified under 11 Restaurants and Hotels.
03 Clothing and Footwear	Mens, ladies and childrens clothing and footwear, sports and leisurewear and services such as laundry and dry cleaning, shoe repair, dress hire and alteration.
04 Housing, Water, Electricity, Gas and Other Fuels	This group covers rents, mortgage interest repayments, local authority service charges, goods and services for maintaining, decorating and repairing dwellings and domestic energy products such as electricity, gas and solid fuels.
05 Furnishings, Household Equipment and Routine Household Maintenance	This category covers household items such as furniture, carpets and other floor coverings, house textiles and soft furnishings, household electrical appliances, and other household items such as utensils, tools, garden equipment and non-durable items for cleaning, washing and other day to day household activity. Also included in this category are domestic services such as cleaning and other services.
06 Health	Health includes medical products, appliances and equipment, hospital charges and out patient services supplied by doctors, dentists, opticians and practitioners of alternative and complimentary medicine.
07 Transport	Includes the purchase of new and second hand vehicles, spare parts, car maintenance, fuels and lubricants, public transport and services such as parking, motor association subscriptions, car wash, toll charges, driving tests, licences and car hire.
08 Communications	Post and telecommunications.
09 Recreation and Culture	All goods and services connected with recreation and culture and includes items such as audio visual and photographic equipment, computers, music and DVDs, sports and recreation goods, games and toys, items connected with gardening and pets, recreational, sporting and cultural activities and events, newspapers and other reading material, package holidays and other items connected with recreation and culture.
10 Education	Covers all aspects of education including primary, secondary, third level and other education and training such as night courses, play schools and examination fees.
11 Restaurants and Hotels	This category covers the following areas: meals in restaurants and hotels; fast food and take-aways; cafes; canteens; alcohol consumed on or within a licensed premises and accommodation services supplied by hotels, guesthouses and hostels.
12 Miscellaneous Goods and Services	This remaining category covers a wide range of items including hairdressing and other grooming; goods for hygiene, hair and body care; personal goods such as jewellery, handbags and wallets; childcare and other social protection services; insurance, financial services and other services including funerals, weddings, legal and professional services.