



Central Statistics Office
An Phríomh-Oifig Staidrimh

Women and Men in Ireland

2007

Published by the Stationery Office, Dublin, Ireland.

To be purchased from the:

Central Statistics Office, Information Section, Skehard Road, Cork,

Government Publications Sales Office, Sun Alliance House,
Molesworth Street, Dublin 2,

or through any bookseller.

Prn A7/2266

Price €5.00

December 2007

© Government of Ireland 2007

Material compiled and presented by the
Central Statistics Office.

Reproduction is authorised, except for commercial
purposes, provided the source is acknowledged.

ISSN 1649-6299

ISBN 0-7557-7215-6

Contents

	Page
Chapter 1	
Introduction and outline of report.....	5
1.1 Introduction	6
1.2 Overview of selected indicators.....	6
1.3 Technical notes	6
Chapter 2	
Indicators	9
2.1 Commentary.....	10
2.2 Indicators.....	11
EU Council Policy Indicators	11
Population	23
Employment	26
Social cohesion and lifestyles	31
Education	37
Health	43
Crime.....	49
Transport.....	51
Appendices	55
Appendix 1	
Notes and definitions	58
Appendix 2	
Data sources	66

Chapter

1

Introduction

and

outline of report

1.1 Introduction

This chapter briefly reviews the background leading to the preparation by the CSO of gender indicators and the role of the social partners and the National Statistics Board (NSB) in requesting this work. The chapter also contains an overall summary of the selected indicators.

The social partnership agreement¹ 2003-2005 requested the CSO to support a move towards more evidence-based policy-making. Responding to this request, the National Statistics Board (NSB) asked the CSO to prepare a social indicator report covering all aspects of social statistics. The NSB placed considerable emphasis on the value of disaggregating the social indicators by key characteristics such as the nine equality grounds² named in equality legislation. The CSO agreed with the Board a strategy of producing a series of key thematic social indicator reports that would be structured around the nine equality grounds.

The CSO produced an initial gender report in December 2004. That report was very favourably received by national and international users. The CSO was requested by a number of users to produce the report on an annual basis. Further reports were produced in December 2005 and December 2006. This report is the fourth in the series.

1.2 Overview of selected indicators

The list of selected indicators is presented in summary format in Table A. A total of 75 indicators have been selected. These indicators have been presented across 8 domains. Key EU gender policy indicators have been brought together in the first domain. This policy domain includes high priority indicators that would otherwise have been included in the more general domains such as employment and unemployment.

Most indicators are presented in both a national and international context. The national context is generally in a time series format while the international context compares Ireland with other EU countries and where available with five additional countries (Turkey, Croatia, TFYR of Macedonia, Iceland, Norway, and Switzerland).

There are two major indicator amendments in this edition. Indicator 4.6, which previously described SSIA subscriptions, has been dropped due to the conclusion of the scheme. Indicator 6.9, which previously described women undergoing a range of preventative examinations, has been dropped due to the non-availability of new data. Additional columns have been added to other indicators. The time series given in some tables has been extended.

1.3 Technical notes

Chapter 2 presents the selected indicators. Where tables are not sorted by year, the sort column is highlighted with a darker background. In international tables, EU 27 data have been used as much as possible even in time series data that precede the EU expansions in May 2004 and January 2007.

The appendices describe the indicator definitions and data sources in greater detail. The national and international data sources are given for each indicator. While many of the national data are compiled by the CSO, we have also used survey and administrative data holdings held by Government departments and agencies wherever appropriate and possible. The data in the tables and graphs reflect the national and international data availability position as of early December 2007.

¹ Department of the Taoiseach (2003): *Sustaining Progress, Social Partnership Agreement 2003-2005*.

² The nine grounds of unlawful discrimination named in equality legislation are: Gender, marital status, family status, age, disability, race, sexual orientation, religious belief and membership of the traveller community.

Table A Domains and indicators used

Domain	Indicator	
1. EU Council Policy Indicators		
Employment rates	1.1	Ireland and EU: Employment rate, 1997-2007
	1.2	Ireland and EU: Female employment rate, 1997-2007
	1.3	EU: Employment rate, 2006
Labour force participation	1.4	Ireland: Employment rate for persons aged 55-64, 1997-2007
	1.5	Ireland: Labour force participation rate (ILO) by age group, 2007
	1.6	EU: Average exit age from the labour force, 2002 and 2005
Employment and family status	1.7	Ireland: Employment rates of persons aged 20-44 by family status, 2007
Occupations	1.8	Ireland: Persons in employment by occupation, 2002 and 2007
Income and gender pay gap	1.9	Ireland: Income liable for social insurance, 2005
	1.10	Ireland: Average income liable for social insurance by age, 2005
	1.11	Ireland: Employment by usual hours worked, 2002 and 2007
	1.12	EU: Gender pay gap, 2005
Early school leavers	1.13	EU: Early school leavers, 2001 and 2006
Poverty rates	1.14	EU: At risk of poverty rates, 2005
Life expectancy	1.15	Ireland: Life expectancy at birth and at 65 years, 1925-2003
	1.16	EU: Life expectancy at birth, 2005
Decision-making	1.17	EU: Representation in national parliaments, 2003-2007
	1.18	Ireland: Women and men in decision-making, 2007
	1.19	Ireland: Civil Service general service grades, 2005
2. Population		
Population profile	2.1	Ireland: Population by age group, 2006
	2.2	EU: Men per 100 women, 2006
Migration	2.3	Ireland: Migration by age group, 1996 and 2006
	2.4	Ireland: Migration, 1996-2006
Principal economic status	2.5	Ireland: Principal economic status, 1997 and 2007
3. Employment		
Employment by sector	3.1	Ireland and EU: Employment by economic sector, 2006
Marital status and usual hours worked	3.2	Ireland: Employment by marital status and usual hours worked, 2007
Pensions	3.3	Ireland: Pension coverage of persons in employment, 2002 and 2005
Unemployment rates	3.4	Ireland: Unemployment rates by age group, 1997 and 2007
	3.5	Ireland: Unemployment rates and long-term unemployment rates, 1997-2007
	3.6	Ireland and EU: Unemployment rates, 1997-2006
	3.7	EU: Unemployment rates, 2006
4. Social cohesion and lifestyles		
Risk of poverty	4.1	Ireland: At risk of poverty rate by most frequent economic activity, 2004 and 2006
	4.2	Ireland: At risk of poverty rate by age, 2004 and 2006
Lone parents	4.3	Ireland: Lone parents, 1997-2007
	4.4	Ireland: Lone parents by age of youngest child, 2007
	4.5	Ireland: Recipients of one-parent family payment by age, 2006
Fertility rate	4.6	Ireland: Age of women at birth of first child, 1955-2006
	4.7	EU: Age of women at birth of first child and total fertility rate, 2005
Religion	4.8	Ireland: Religion by age group, 2006
	4.9	Ireland: Religion by nationality, 2006
Sports participation	4.10	Ireland: Grants to high performance athletes by age of athlete, 2001 and 2006
	4.11	Ireland: Grants to high performance athletes, 2006
Grants to artists	4.12	Ireland: Arts Council grants to artists by artform, 2006
	4.13	Ireland: Arts Council grants to artists by size of grant, 2006

Domain	Indicator	
5. Education		
Second level education	5.1	Ireland: Leaving Certificate higher level candidates, 2007
Third level graduates	5.2	Ireland: Third level graduates by field of study, 2005
Participation in education	5.3	Ireland: Students as proportion of population aged 18-24, 2002 and 2007
Educational attainment	5.4	Ireland: Persons aged 25-34 with third level qualification, 2000-2007
	5.5	Ireland: Persons aged 35-64 by highest level of education attained, 2007
Education personnel	5.6	Ireland: Classroom teachers, 1996-2006
	5.7	EU: Classroom teachers and academic staff, 2005
	5.8	EU: School management personnel, 2005
6. Health		
Death rates	6.1	Ireland: Age-sex specific death rates, 2006
	6.2	Ireland: Death rates for persons aged 65-74, 1996-2006
	6.3	Ireland: Mortality by cause of death, 2006
Medical cards	6.4	Ireland: Persons aged 0-69 registered with the General Medical Services scheme, 2006
Hospital activity	6.5	Ireland: Acute hospital discharges by principal diagnosis, 2006
	6.6	Ireland: Acute hospital discharges by patient type, 1996-2006
Mental illness and disability	6.7	Ireland: Persons with an intellectual disability by level of disability, 2007
	6.8	Ireland: Admissions to psychiatric hospitals and units, 2005
Carers	6.9	Ireland: Recipients of Carer's Allowance and Carer's Benefit, 1997-2006
	6.10	Ireland: Recipients of Carer's Allowance and Carer's Benefit by age, 2006
	6.11	Ireland: Labour force participation rate of carers by unpaid help provided, 2006
Health personnel	6.12	Ireland: Health service personnel by grade category, 2007
7. Crime		
Criminal convictions	7.1	Ireland: Prisoners by offence group, 2005
	7.2	Ireland: Criminal convictions, 2003-2006
	7.3	EU: Criminal convictions, 2003
Victims of crime	7.4	EU: Victims of selected crimes, 2003
	7.5	Ireland: Homicides recorded by age of victim, 2006
8. Transport		
Travel to work	8.1	Ireland: Means of travel to work, 1996 and 2006
	8.2	Ireland: Time taken to travel to work, 2006
Road traffic accidents	8.3	Ireland: Road fatalities by road user type, 2005
	8.4	Ireland: Road fatalities, 1995-2005
	8.5	Ireland: Road casualties by age of victim, 2005
Driving licences	8.6	Ireland: Current driving licences by age of holder, 2006

Chapter

2

Indicators

2.1 Commentary

This section briefly reviews some of the key issues of interest arising in the analysis of the lives of men and women in Ireland. More detailed commentary on the individual indicators are included in Section 2.2. Key points from the indicators include:

- ◆ Following the 2007 general election, women represented 13% of TDs in Dáil Eireann. This rate was well below the average EU rate of 23.4%. Women represented 34% of members of State Boards, 20% of members of local authorities and 16% of members of regional authorities. Almost 80% of staff in clerical grades in the Civil Service were women, but women represented just 10% of staff at Assistant and Deputy Secretary levels.
- ◆ Women's income³ in 2005 was 66.3% of men's income. Women's hourly earnings were around 86% of men's.
- ◆ The proportion of women at risk of poverty, after pensions and social transfers, was 19.5% in Ireland in 2006, compared to a corresponding rate for men of 17.5%. The at risk of poverty rates for employed women and men were 6.0% and 6.1% respectively.
- ◆ The employment rate for women in Ireland in 2007 at 60.3%, exceeded the EU Stockholm Council 2005 target of 57%. The employment rate for men in Ireland in 2007 was 77.2%, well above the average EU (2006) rate of 71.6%.
- ◆ The Stockholm Council also set employment rate targets of 50% for men and women in the 55-64 years age group by 2010. Ireland already exceeds the male target (68.0% in 2007) but is considerably below the female target for the 55-64 age group (39.8% in 2007). However the female employment rate for this age group has almost doubled over the period 1997-2007 and in 2006, at 40.0%, was above the EU average of 34.8%.
- ◆ In 2007 just over 1% of persons, whose principal activity was looking after home/family, were men.
- ◆ Women represented 84.1% of primary school teachers and 51% of primary school management personnel in 2005. In the health service, women represented 79.5% of all staff in 2007, but only 30.6% of medical and dental consultants.
- ◆ In 2007, around 96% of Leaving Certificate students taking higher level engineering, 94% taking construction studies and 91% taking technical drawing examinations were male whereas almost 69% of higher level biology candidates were female. There were higher proportions of women than men taking English and European languages at higher level.
- ◆ In 2006, the proportion of female early school leavers in the 18-24 age group in Ireland (8.7%) was much lower than the proportion of male early school leavers (14.9%). Both these proportions were lower than the EU averages of 14.9% for women and 19.3% for men.
- ◆ Men were generally more likely to die at a younger age than women, with the difference in risk particularly high in the 15-24 years age group. This reflects a greater tendency for young men to commit suicide and to be victims of motor vehicle accidents.
- ◆ Estimated life expectancy rates at birth for Ireland were 77.3 years for men and 81.7 years for women in 2005, compared to the average 2003 EU rates of 74.6 years for men and 80.8 for women.
- ◆ Ireland had the most gender balanced population in the EU in 2006, with 100 women per 100 men in the population. For older age groups the proportion of women in the population was higher with 126 women per 100 men in the 65 and over age group.

³ Refers to income liable for social insurance payments.

2.2 Indicators

EU Council Policy Indicators

1.1 Ireland and EU: Employment rate⁴, 1997-2007

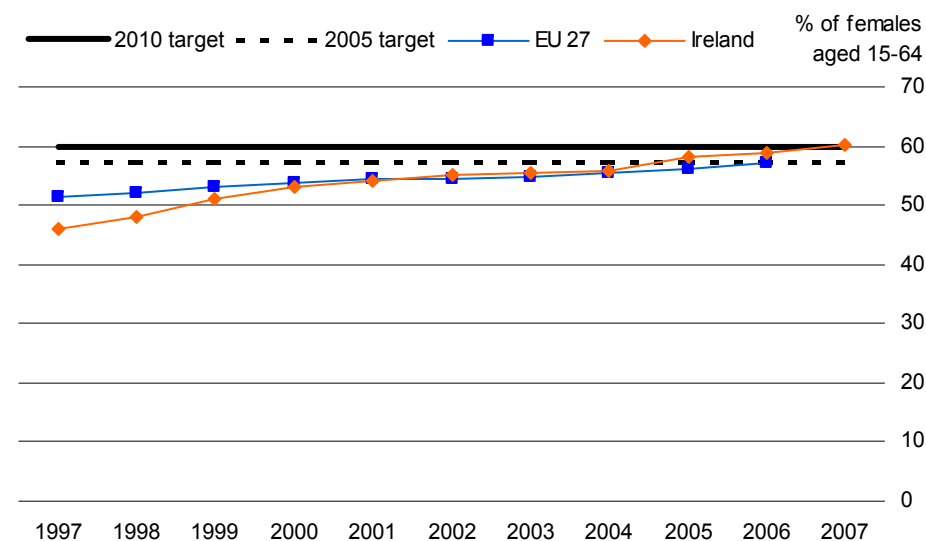
% of population aged 15-64

Year	Ireland		EU 27 ⁵	
	Men	Women	Men	Women
1997	69.1	45.9	70.0	51.4
1998	71.1	48.1	70.3	52.0
1999	73.6	51.2	70.7	53.0
2000	75.7	53.2	70.8	53.7
2001	76.2	54.0	70.9	54.3
2002	75.0	55.2	70.3	54.4
2003	74.7	55.3	70.3	54.8
2004	75.2	55.8	70.3	55.4
2005	76.2	58.0	70.8	56.2
2006	77.3	58.8	71.6	57.2
2007	77.2	60.3	:	:

Source: CSO QNHS⁶, Eurostat LFS

- ◆ The Lisbon Council⁷ set an employment target of 60% of women in the age group 15-64 to be in employment by 2010. An interim EU target of 57% by 2005 was also set by the Stockholm Council⁸ (see Graph 1.2).
- ◆ The employment rate for both women and men in Ireland has risen substantially since 1997. The rate for men increased from 69.1% in 1997 to 77.2% in 2007. Over the same period the employment rate for women in Ireland rose from 45.9% to 60.3%, exceeding the EU target of 60% for the female employment rate (see Table 1.1 and Graph 1.2).

1.2 Ireland and EU: Female employment rate⁴ 1997-2007



Source: CSO QNHS⁶, Eurostat LFS⁵

- ◆ In 1997, the employment rates for both men and women at 69.1% and 45.9% respectively, were below the corresponding EU rates of 70.0% and 51.4%. By the following year, the male employment rate had risen to 71.1%, above the EU rate of 70.3% and has remained higher than the EU rate ever since, reaching 77.3% in 2006 compared to an EU rate of 71.6%. The female employment rate in Ireland increased more rapidly than the EU female employment rate, reaching 58.8% in Ireland compared to 57.2% in the EU in 2006 (see Table 1.1 and Graph 1.2).

⁴ EU Structural Indicator <http://europa.eu.int/comm/eurostat/structuralindicators>.

⁵ EU 27 data for 2005 and 2006 are provisional.

⁶ LFS (April 1997) and QNHS (March-May, 1998-2007).

⁷ The European Council held a special meeting on 23-24 March 2000 in Lisbon to agree a new strategic goal for the Union in order to strengthen employment, economic reform and social cohesion as part of a knowledge-based economy.

⁸ Stockholm European Council 2001 Realising the European Union's Potential: Consolidating and extending the Lisbon Strategy.

1.3 EU: Employment rate, 2006

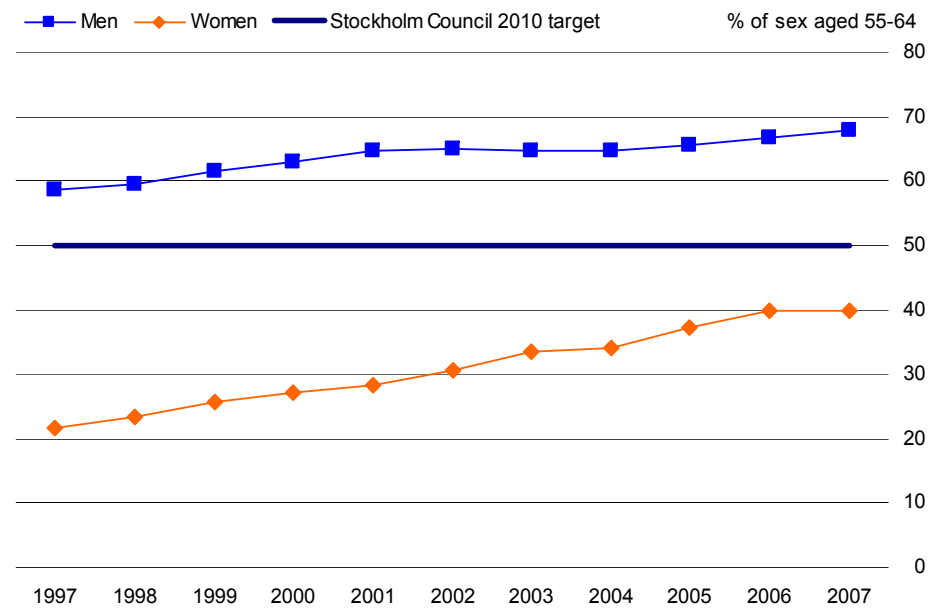
Country	% of sex aged 15-64		% of sex aged 55-64	
	Men	Women	Men	Women
Sweden	75.5	70.7	72.3	66.9
Estonia	71.0	65.3	57.5	59.2
Denmark	81.2	73.4	67.1	54.3
Finland	71.4	67.3	54.8	54.3
United Kingdom	77.3	65.8	66.0	49.1
Latvia	70.4	62.4	59.5	48.7
Lithuania	66.3	61.0	55.7	45.1
Portugal	73.9	62.0	58.2	42.8
Germany ⁹	72.8	62.2	56.4	40.6
Ireland	77.3	58.8	66.6	40.0
Netherlands	80.9	67.7	58.0	37.2
Cyprus	79.4	60.3	71.6	36.6
France ⁹	68.5	57.7	40.1	35.2
EU 27⁹	71.6	57.2	52.6	34.8
Romania	64.6	53.0	50.0	34.5
Czech Republic	73.7	56.8	59.5	32.1
Bulgaria	62.8	54.6	49.5	31.1
Spain	76.1	53.2	60.4	28.7
Luxembourg	72.6	54.6	38.7	27.8
Hungary	63.8	51.1	41.4	27.1
Greece	74.6	47.4	59.2	26.6
Austria	76.9	63.5	45.3	26.3
Belgium	67.9	54.0	40.9	23.2
Italy	70.5	46.3	43.7	21.9
Slovenia	71.1	61.8	44.5	21.0
Poland	60.9	48.2	38.4	19.0
Slovakia	67.0	51.9	49.8	18.9
Malta	74.5	34.9	50.4	11.2
Norway	78.4	72.2	73.1	61.6
Switzerland	84.7	71.1	74.9	56.6
Croatia	62.0	49.4	44.4	25.7
Turkey	68.1	23.9	44.1	16.7

Source: Eurostat LFS, CSO QNHS¹⁰

⁹ Data for EU 27, Germany and France are provisional.

¹⁰ QNHS (March-May, 2006).

1.4 Ireland: Employment rate for persons aged 55-64¹¹, 1997-2007



Source: CSO QNHS¹²

- ◆ In 2001, the Stockholm Council set a target of a 50% employment rate for men and women in the 55-64 age group by 2010.
- ◆ The employment rates for both women and men aged 55-64 in Ireland showed an increase over the period 1997-2007. For women in this age group the employment rate almost doubled from 21.7% in 1997 to 40% in 2006, showing rapid progress towards the 2010 target, but declining slightly to 39.8% in 2007. The employment rate for men in Ireland aged 55-64 has remained above the 2010 target, increasing from 58.6% in 1997 to 68.0% in 2007 (see Graph 1.4).
- ◆ In 2006, Ireland's employment rates for women aged 55-64 (40.0%) and men aged 55-64 (66.6%), were higher than the corresponding EU averages of 34.8% for women and 52.6% for men in this age group (see Table 1.3).

¹¹ EU Structural Indicator <http://europa.eu.int/comm/eurostat/structuralindicators>.

¹² LFS (April 1997) and QNHS (March-May, 1998-2007).

1.5 Ireland: Labour force participation rate¹³ (ILO) by age group, 2007

% of cohort in labour force			
Age group	Men	Women	% women
15-19	28.8	25.3	45.8
20-24	79.9	69.4	46.2
25-34	92.3	79.0	45.2
35-44	93.5	69.1	42.0
45-54	89.0	67.1	43.0
55-64	70.0	40.8	36.5
65 & over	16.2	3.9	23.1
Total	73.1	53.9	42.8

Source: CSO QNHS¹⁴

- ◆ In 2007, the labour force participation rate for men was highest for the 35-44 age group at 93.5%. For women, the highest participation rate occurred in the 25-34 age group with 79.0% of women of that age in the labour force. The participation rate for older women was much lower than that for men, with a rate of 40.8% for women aged 55-64 compared to 70.0% for men of that age (see Table 1.5).
- ◆ Women represented 42.8% of the labour force in 2007. In the 20-24 age group 46.2% of the labour force was female. This was the highest female proportion of all age groups (see Table 1.5).
- ◆ In 2002, to address the demographic challenge of an ageing EU population, the Barcelona Council¹⁵ set a target of increasing the average EU retirement age by 5 years by 2010.
- ◆ In Ireland in 2005, the average exit age from the labour force for women was 64.6 years while for men it was 63.6 years. The EU 25 averages in 2005 were 60.4 years for women and 61.4 years for men compared to corresponding figures for 2002 of 60.0 years and 60.8 years (see Table 1.6).

1.6 EU: Average exit age from the labour force¹⁶, 2002 and 2005¹⁷

Country	age in years			
	2002		2005	
	Men	Women	Men	Women
Ireland	62.8	63.5	63.6	64.6
Portugal	62.9	63.1	62.4	63.8
Sweden	63.4	63.1	64.3	63.0
Spain	61.4	61.6	62.0	62.8
United Kingdom	62.7	61.8	63.4	61.9
Finland	60.6	60.4	61.8	61.7
Romania	60.5	59.2	64.7	61.5
Netherlands	62.9	61.6	61.6	61.4
Greece	61.1	61.5	62.5	61.0
Denmark	61.9	59.8	61.2	60.7
EU 25	60.8	60.0	61.4	60.4
Belgium	58.6	58.4	61.6	59.6
Austria	59.4	59.2	60.3	59.4
Czech Republic	62.2	58.4	62.3	59.1
France	58.9	58.7	58.5	59.1
Italy	60.2	59.7	60.7	58.8
Hungary	59.6	58.8	61.2	58.7
Bulgaria	59.8	57.6	62.4	58.4
Slovakia	59.6	55.7	61.1	57.6
Poland	58.1	55.8	62.0	57.4
Germany	61.1	60.3	:	:
Iceland	63.9	63.6	65.0	65.5
Norway	62.2	62.8	63.1	63.1
Switzerland	:	:	63.1	62.0
Croatia	:	:	60.5	57.4

Source: Eurostat LFS

¹³ Persons in the labour force expressed as a proportion of the population (see Appendix 1).

¹⁴ QNHS (March – May 2007).

¹⁵ The European Council met in Barcelona in March 2002 for its second annual Spring meeting on the economic, social and environmental situation in the Union.

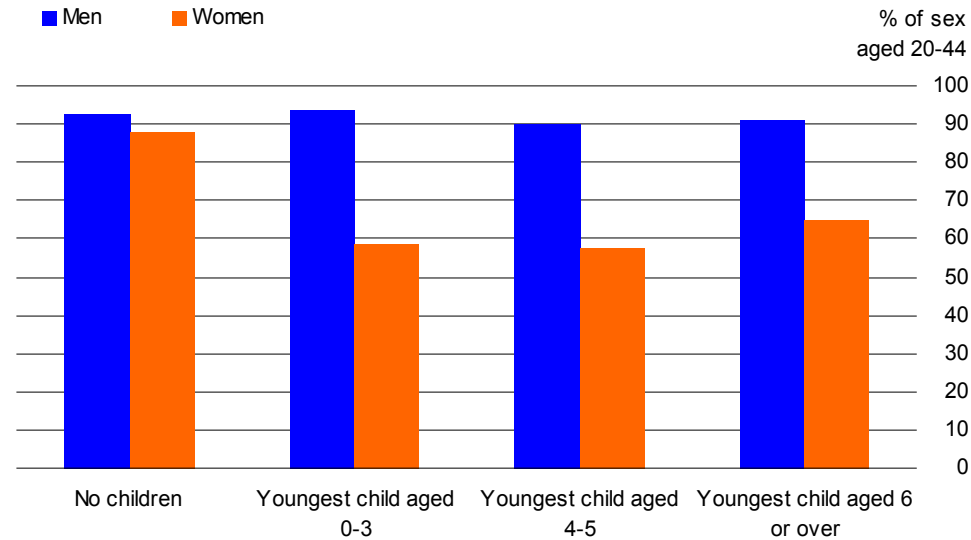
¹⁶ EU Structural Indicator <http://europa.eu.int/comm/eurostat/structuralindicators>. The current EU methodology for calculating average exit age may not make sufficient allowance for the higher participation rates for women in Ireland across all age groups.

¹⁷ 2005 EU 25 data are estimates, break in series for Italy and Austria. Data for Sweden are provisional.

1.7 Ireland: Employment rates of persons aged 20-44 by family status, 2007

Family status	% of 20-44 age group	
	Men	Women
No children	92.6	88.1
Youngest child aged 0-3	93.6	58.5
Youngest child aged 4-5	90.2	57.5
Youngest child aged 6 or over	91.0	64.7
Total	92.3	66.2

Source: CSO QNHS¹⁸



- ◆ The Barcelona Council agreed targets of childcare provision for at least 90% of children between 3 years of age and the mandatory school-going age (six years of age in Ireland) by 2010. They also agreed a target of childcare for at least 33% of children under 3 years of age by 2010.
- ◆ Progress towards these targets in Ireland cannot be measured at present due to a lack of Irish data. However, data from the QNHS gives an indication of the effect that having young children in the family has on female employment rates.
- ◆ In 2007, the employment rate for women aged 20-44 was 66.2%. This rate varied from 88.1% for women with no children to 57.5% for women whose youngest child was aged between 4 and 5 years of age (see Table 1.7).

¹⁸ QNHS (March-May, 2007).

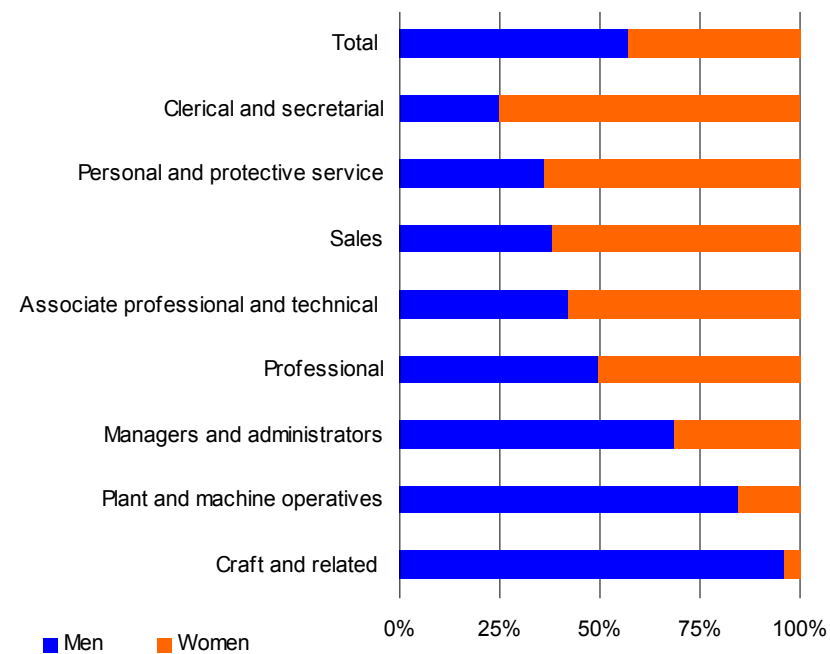
1.8 Ireland: Persons in employment by occupation, 2002 and 2007

Broad occupational group	000s			
	2002		2007	
	Men	Women	Men	Women
Craft and related	213.4	12.0	287.0	12.4
Plant and machine operatives	144.5	40.3	145.9	26.7
Managers and administrators	227.1	86.9	223.8	102.7
Associate professional and technical	65.2	90.4	77.8	106.8
Sales	54.6	89.7	68.6	112.5
Professional	99.3	90.2	120.6	122.9
Personal and protective service	72.1	96.5	84.9	150.0
Clerical and secretarial	54.1	170.6	64.7	192.9
Other	97.4	59.5	122.7	72.5
Total	1,027.7	736.1	1,195.9	899.4

Source: CSO QNHS¹⁹

- ◆ In 2007, there were 899,400 women and 1,195,900 men in employment in Ireland. Of these, 21.4% of women in employment were employed in clerical and secretarial occupations, compared with 5.4% of men. Professional occupations were the most gender balanced with women representing 50.5% of persons employed in these occupations. Craft and related occupations were the least gender balanced with men representing 95.9% of workers in these occupations (see Table 1.8 and graph).
- ◆ There has been little change in the gender profile of the occupational groups between 2002 and 2007. In both years, women accounted for three-quarters of workers in the clerical and secretarial group, but only around 5% of those in the craft and related occupations. The only occupation where the proportion of women decreased over the period was plant and machine operatives, falling from 21.8% in 2002 to 15.5% in 2007. The proportion of women increased slightly in other occupations, the highest increases being among managers and administrators, professionals, and persons employed in personal and protective services (see Table 1.8).

2007



Occupations

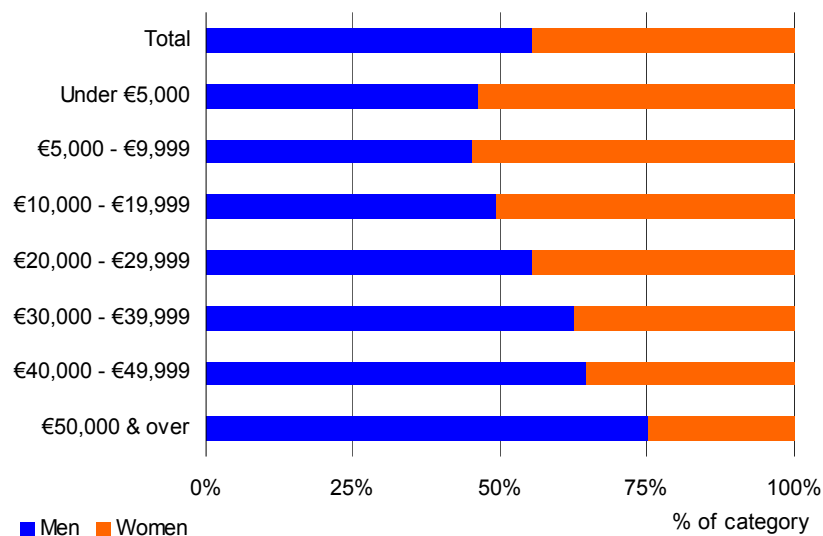
¹⁹ QNHS (March-May, 2002 & 2007).

1.9 Ireland: Income²⁰ liable for social insurance, 2005

Income band	persons aged 15-84		% of men/women aged 15-84	
	Men	Women	Men	Women
Under €5,000	177,217	205,973	13.0	18.7
€5,000 - €9,999	136,112	164,524	10.0	14.9
€10,000 - €19,999	260,480	266,752	19.1	24.2
€20,000 - €29,999	262,860	209,995	19.3	19.1
€30,000 - €39,999	202,635	121,189	14.8	11.0
€40,000 - €49,999	118,777	65,431	8.7	5.9
€50,000 & over	206,963	68,256	15.2	6.2
Total	1,365,044	1,102,120	100.0	100.0
<i>Average income €</i>	<i>31,138</i>	<i>20,660</i>		

Source: Department of Social and Family Affairs, Revenue Commissioners

- ◆ The EU Council 2003 recommendations on the implementation of Member States employment policies drew attention to the continuing high gender pay gap and the need for Member States to address the underlying factors causing this gap.



²⁰ These tables are based on income data that covers 85.0% of all men aged 15-84 and 67.9% of women of this age. However for older age groups, especially the 65 and over age group, the coverage is much lower due to the nature of the income considered. See Appendix 1 for further information.

1.10 Ireland: Average income²⁰ liable for social insurance by age, 2005

Age group	average income (€)		
	Men	Women	Women's income as % of men's
15-24	12,288	10,136	82.5
25-34	28,599	23,953	83.8
35-44	40,961	25,748	62.9
45-54	45,010	25,266	56.1
55-64	39,982	21,541	53.9
65-84	18,181	12,658	69.6
Total aged 15-84	31,138	20,660	66.3

Source: Department of Social and Family Affairs, Revenue Commissioners

- ◆ In 2005, men aged between 15 and 84 years had an average income of €31,138 while the average income for women was €20,660 or 66.3% of men's income (see Tables 1.9 and 1.10). When these figures are adjusted to take account of the average hours per week spent in paid employment by men and women in 2005, (see 2007 data in Table 1.11) women's average hourly income was around 86% of men's in 2005.
- ◆ The difference between male and female incomes for persons aged 15-64 increased with age. The average income of women aged 15-24 was 82.5% of that of men of the same age in 2005, while for the 55-64 age group women's average income was 53.9% of men's (see Table 1.10).
- ◆ In interpreting Tables 1.9 and 1.10, it should be borne in mind that no account has been taken of the number of hours being worked or of the occupations being performed by men and women (see Tables 1.8 and 1.11). In addition, income used for private pension contributions is not included in the figures (see Table 3.3).

1.11 Ireland: Employment by usual hours worked, 2002 and 2007

Usual hours worked	2002		2007	
	Men	Women	Men	Women
1-19	25.4	89.4	29.2	123.5
20-29	35.4	138.9	48.3	178.8
30-39	363.7	327.0	449.9	401.4
40 and over	438.9	137.7	498.8	144.9
Varied and not stated	164.2	43.1	169.8	50.9
Total	1,027.7	736.1	1,195.9	899.4
<i>Average hours per week</i>	<i>42.0</i>	<i>32.4</i>	<i>40.6</i>	<i>31.3</i>

000s

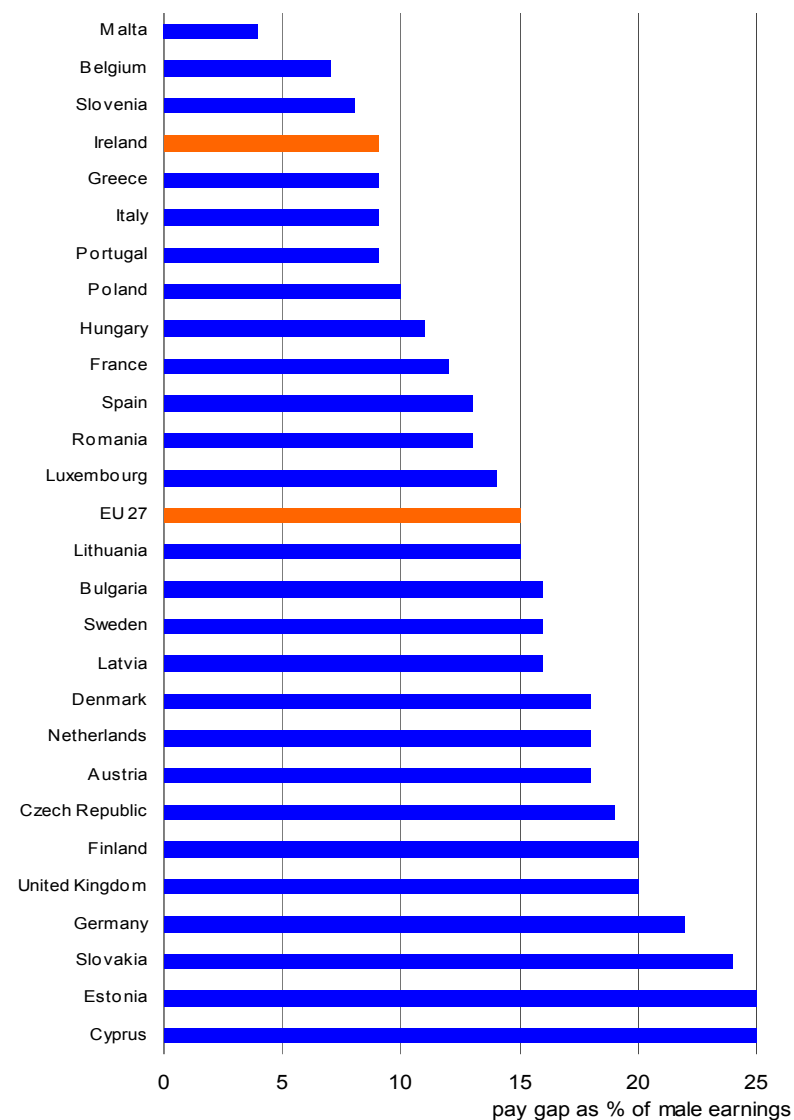
Source: CSO QNHS²¹

- ◆ Average hours worked in paid employment decreased slightly for both men and women between 2002 and 2007. In 2002, women's average hours per week were 32.4, this had reduced to 31.3 by 2007. The corresponding decrease for men was from 42.0 hours per week in 2002 to 40.6 in 2007 (see Table 1.11).
- ◆ In 2007, 79.3% of men in employment were working for 30 or more hours per week compared to 60.7% of women. The comparable figures for 2002 were 78.1% for men and for 63.1% women (see Table 1.11).
- ◆ Women represented 80.9% of persons who worked a maximum of 19 hours per week in paid employment in 2007 compared to 77.9% of such persons in 2002 (see Table 1.11).
- ◆ The gender pay gap²² in Ireland in 2005 was 9% of male earnings, which was below the EU average of 15% of male earnings. Malta had the lowest gender pay gap in the EU at 4% of male earnings in 2005 (see Graph 1.12). It should be noted that persons working 15 hours or less are excluded from this indicator. These persons are more likely to be female and persons on lower incomes (see Table 1.11).

²¹ QNHS (March-May, 2002 & 2007).

²² Average gross hourly earnings, see Appendix 1.

1.12 EU: Gender pay gap^{23, 24}, 2005²⁵



Source: Eurostat, EU-SILC

²³ EU Structural Indicator <http://europa.eu.int/comm/eurostat/structuralindicators>.

²⁴ The population and methodology used to calculate the gender pay gap is not comparable to any pay comparisons made in Tables 1.9 and 1.10.

²⁵ Eurostat estimate for EU 27, provisional data for Ireland, Greece, Spain, Slovenia and UK.

1.13 EU: Early school leavers²⁶, 2001 and 2006²⁷

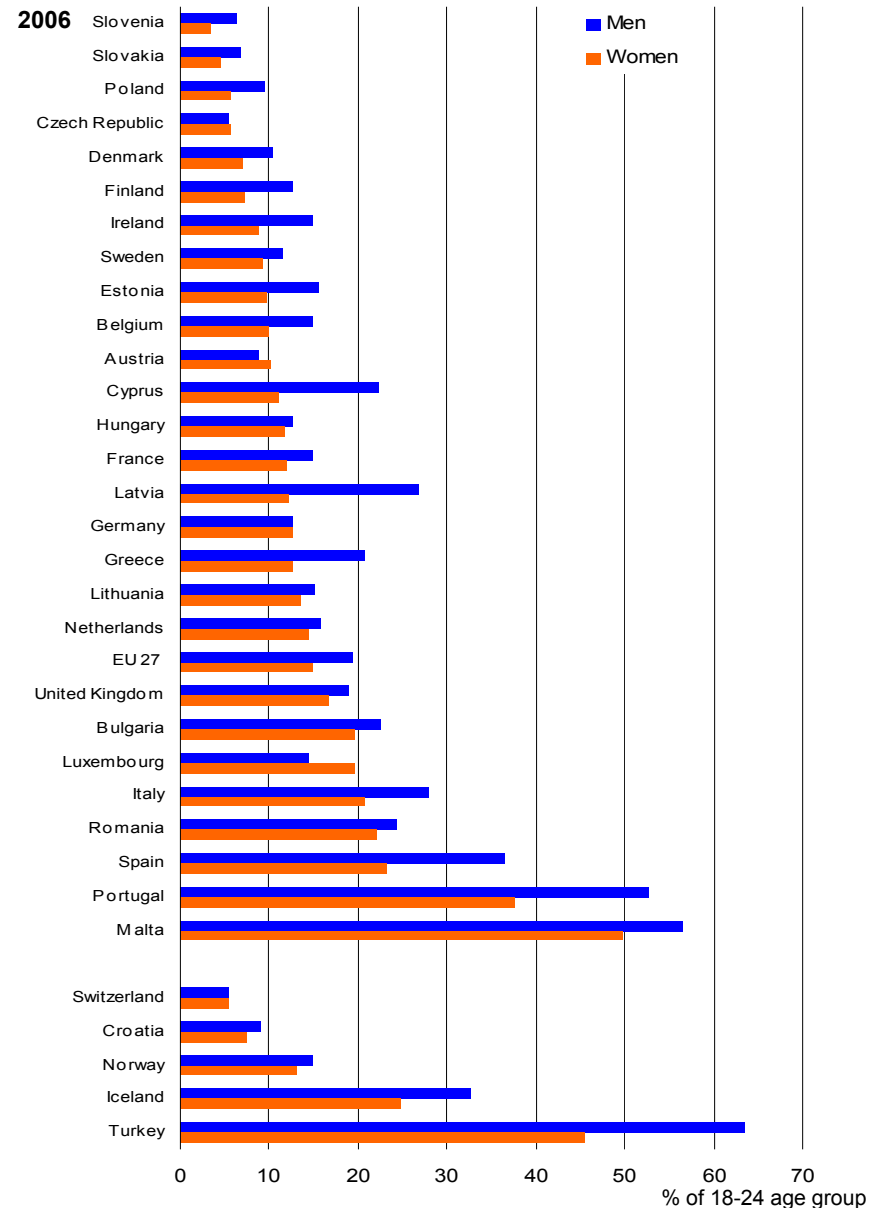
Country	% of 18-24 age group			
	2001		2006	
	Men	Women	Men	Women
Slovenia	9.3	5.6	6.2	3.3
Slovakia	6.7	4.6	6.7	4.6
Poland	9.7	6.0	9.5	5.6
Czech Republic	5.3	5.7	5.3	5.7
Denmark	9.8	8.2	10.3	6.9
Finland	13.0	7.7	12.6	7.3
Ireland	18.4	10.9	14.9	8.7
Sweden	11.3	9.7	11.4	9.3
Estonia	17.1	11.0	15.6	9.6
Belgium	15.0	12.3	14.9	9.9
Austria	9.7	10.7	8.7	10.2
Cyprus	23.9	13.1	22.3	11.0
Hungary	13.3	12.6	12.5	11.8
France	15.0	12.0	14.9	11.9
Latvia	26.7	12.2	26.7	12.2
Germany	12.2	12.8	12.6	12.6
Greece	21.3	13.4	20.7	12.6
Lithuania	18.4	9.3	15.1	13.4
Netherlands	16.5	14.1	15.7	14.3
EU 27	19.4	15.2	19.3	14.9
United Kingdom	18.7	16.7	18.8	16.7
Bulgaria	21.1	19.5	22.5	19.6
Luxembourg	19.0	17.2	14.4	19.6
Italy	30.2	22.6	27.9	20.7
Romania	21.4	21.3	24.3	22.1
Spain	35.6	22.7	36.4	23.1
Portugal	51.2	36.7	52.6	37.5
Malta	55.3	53.5	56.5	49.7
Switzerland	5.7	3.7	5.4	5.5
Croatia	:	:	9.1	7.4
Norway	10.0	8.4	14.9	13.1
Iceland	35.0	26.5	32.7	24.8
Turkey	65.4	48.8	63.5	45.4

Source: CSO QNHS, Eurostat LFS

- ◆ In its Communication on the Future of the European Employment Strategy, the European Commission outlined the need to reduce school failure and drop out rates, and to raise the quality of education as a priority. In the 2001 Employment Guidelines, Member States were called upon to halve the number of early school leavers in the 18-24 age group by 2010.

²⁶ EU Structural Indicator <http://europa.eu.int/comm/eurostat/structuralindicators>.

²⁷ 2006 data for Estonia, Lithuania, Slovenia and Croatia is unreliable. 2001 data for Estonia and Slovenia is unreliable. 2001 data from 2002 for Slovakia, Czech Republic, Latvia and Ireland. 2006 data for Latvia, Portugal, Finland, Iceland and Switzerland is provisional. Break in series in 2002 for Sweden.



- ◆ In 2006, the proportion of female early school leavers was lower than that of males in almost all EU countries. Early school leavers represented 8.7% of women and 14.9% of men in the 18-24 age group in Ireland. The EU average for early school leavers in 2006 was 14.9% of women and 19.3% of men in the 18-24 age group (see Table 1.13 and graph).

1.14 EU: At risk of poverty rates, 2005²⁸

Country	% of sex			
	Men		Women	
	Before pensions and social transfers	After pensions and social transfers ²⁹	Before pensions and social transfers	After pensions and social transfers ²⁹
Sweden	39	9	45	10
Czech Republic	36	10	42	11
Netherlands	34	11	40	11
Denmark	35	12	41	12
Luxembourg	38	13	42	13
Hungary	48	14	52	13
Austria	39	11	46	13
Slovakia	37	13	43	13
Finland	38	11	43	13
Germany	41	12	46	14
France	42	12	47	14
Slovenia	40	11	45	14
Belgium	39	14	45	15
Malta	34	14	39	16
EU 25	40	15	46	17
Cyprus	27	15	31	18
Romania	42	18	44	18
Estonia	36	17	41	19
United Kingdom	40	18	46	19
Latvia	37	18	43	20
Poland	49	21	52	20
Portugal	39	19	43	20
Ireland	37	19	42	21
Greece	37	18	42	21
Spain	36	19	41	21
Italy	39	17	46	21
Lithuania	40	20	44	21
Iceland	27	10	30	9
Norway	35	10	41	13

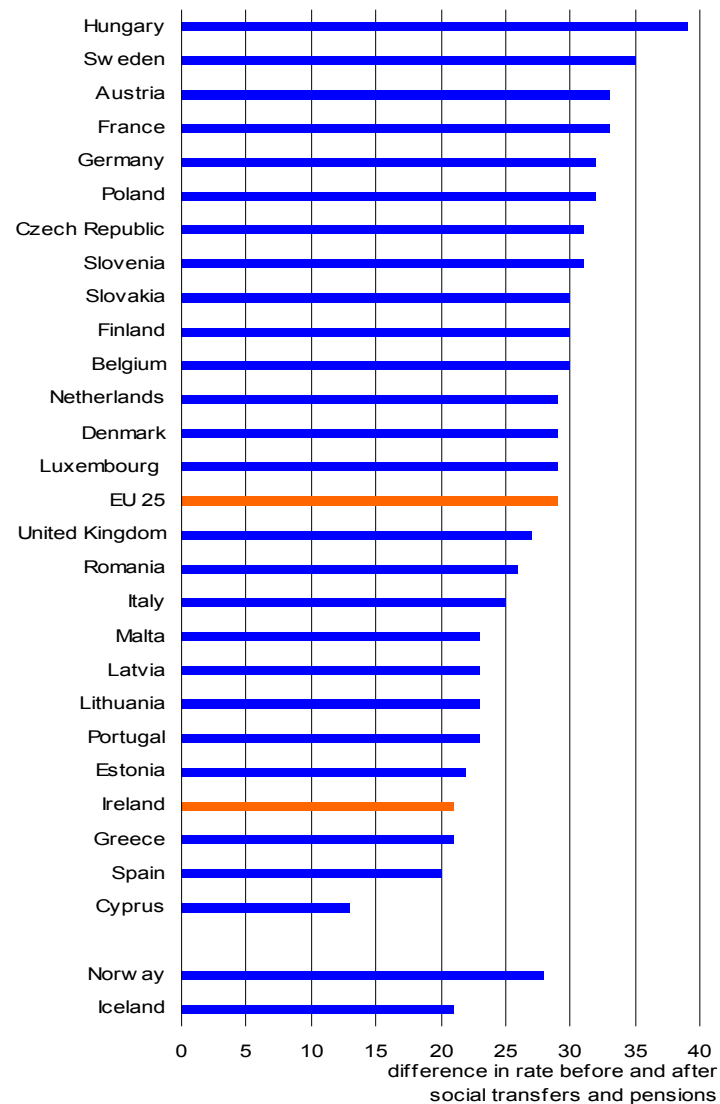
Source: Eurostat, CSO EU SILC

- ◆ In 2005, 37% of men and 42% of women in Ireland were considered to be at risk of poverty before income from social transfers was taken into account. The corresponding rates after social transfers and pensions were 19% for men and 21% for women. In 2005, Ireland had the joint highest reported risk of poverty rate after social transfers for women and the joint third highest rate for men among reporting EU countries (see Table 1.14).

²⁸ EU 25 data are Eurostat estimates. Break in series for Czech Republic, Germany, Cyprus, Latvia, Lithuania, Hungary, Malta, Netherlands, Poland, Slovenia, Slovakia and UK.

²⁹ EU Structural Indicator <http://europa.eu.int/comm/eurostat/structuralindicators>. See Appendix 1 note.

EU: Effect of pensions and social transfers on the female at risk of poverty rate



Source: Eurostat, CSO EU SILC

- ◆ Social transfers and pensions reduced the Irish risk of poverty rate for women by 21 percentage points in 2005. This was the joint third lowest reduction in the EU. The effect of social transfers and pensions on the female risk of poverty rate was greatest in Hungary, where the rate was reduced by 39 percentage points in 2005 (see Table 1.14 and graph).

1.15 Ireland: Life expectancy at birth and at 65 years, 1925-2003

Period	years					
	At birth			At 65 years		
	Men	Women	Difference	Men	Women	Difference
1925-1927	57.4	57.9	0.5	12.8	13.4	0.6
1935-1937	58.2	59.6	1.4	12.5	13.1	0.6
1940-1942	59.0	61.0	2.0	12.3	13.2	0.9
1945-1947	60.5	62.4	1.9	12.0	13.1	1.1
1950-1952	64.5	67.1	2.6	12.1	13.3	1.2
1960-1962	68.1	71.9	3.8	12.6	14.4	1.8
1965-1967	68.6	72.9	4.3	12.4	14.7	2.3
1970-1972	68.8	73.5	4.7	12.4	15.0	2.6
1978-1980	69.5	75.0	5.5	12.4	15.4	3.0
1980-1982	70.1	75.6	5.5	12.6	15.7	3.1
1985-1987	71.0	76.7	5.7	12.6	16.2	3.6
1990-1992	72.3	77.9	5.6	13.4	17.1	3.7
1995-1997	73.0	78.5	5.5	13.8	17.4	3.6
2001-2003	75.1	80.3	5.2	15.4	18.7	3.3

Source: CSO Irish Life Tables No 14, 2001-2003

- ◆ In Ireland, women's life expectancy at birth increased from 57.9 years in the period 1925-1927 to 80.3 years in 2001-2003. Over the same period, the life expectancy at birth of men increased from 57.4 years to 75.1 years. The difference between male and female life expectancy at birth increased from 0.5 years in 1925-1927 to 5.7 years in 1985-1987 before decreasing to 5.2 years in 2001-2003 (see Table 1.15).
- ◆ The difference between male and female life expectancy at 65 years of age increased from 0.6 years in 1925-1927 to 3.7 years in 1990-1992. However, this difference had decreased to 3.3 years by 2001-2003 (see Table 1.15).
- ◆ Life expectancy at birth in 2005 was estimated as being slightly higher for Irish women at 81.7 years, than the 2003 EU average of 80.8 years. Life expectancy for Irish men was estimated at 77.3 years in 2005, which was higher than the 2003 EU average of 74.6 (see Table 1.16).

1.16 EU: Life expectancy at birth, 2005³⁰

Country	years		
	Men	Women	Difference
United Kingdom	77.1	81.1	4.0
Malta	77.3	81.4	4.1
Cyprus	76.8	81.1	4.3
Sweden	78.5	82.9	4.4
Ireland	77.3	81.7	4.4
Netherlands	77.3	81.7	4.5
Denmark	76.0	80.5	4.5
Greece	76.8	81.6	4.8
Germany	76.7	82.0	5.3
Austria	76.7	82.3	5.6
Luxembourg	76.6	82.2	5.6
Italy	77.1	82.8	5.6
Belgium	76.2	81.9	5.7
EU 27	74.6	80.8	6.2
Czech Republic	72.9	79.3	6.3
Portugal	74.9	81.3	6.4
Spain	77.0	83.7	6.7
Slovenia	73.9	80.9	6.9
Finland	75.6	82.5	6.9
Romania	68.7	75.7	7.0
France	76.7	83.7	7.0
Bulgaria	69.0	76.2	7.3
Slovakia	70.2	78.1	7.9
Hungary	68.7	77.2	8.5
Poland	70.8	79.3	8.6
Estonia	67.3	78.2	10.8
Latvia	65.4	76.5	11.1
Lithuania	65.3	77.3	12.0
Iceland	79.6	83.5	3.9
Macedonia, TFYR	71.6	75.9	4.3
Norway	77.8	82.8	4.9
Switzerland	78.7	84.0	5.2
Croatia	71.8	78.8	7.0

Source: Eurostat

³⁰ 2003 data for EU 27 and Italy.

1.17 EU: Representation in national parliaments, 2003-2007³¹

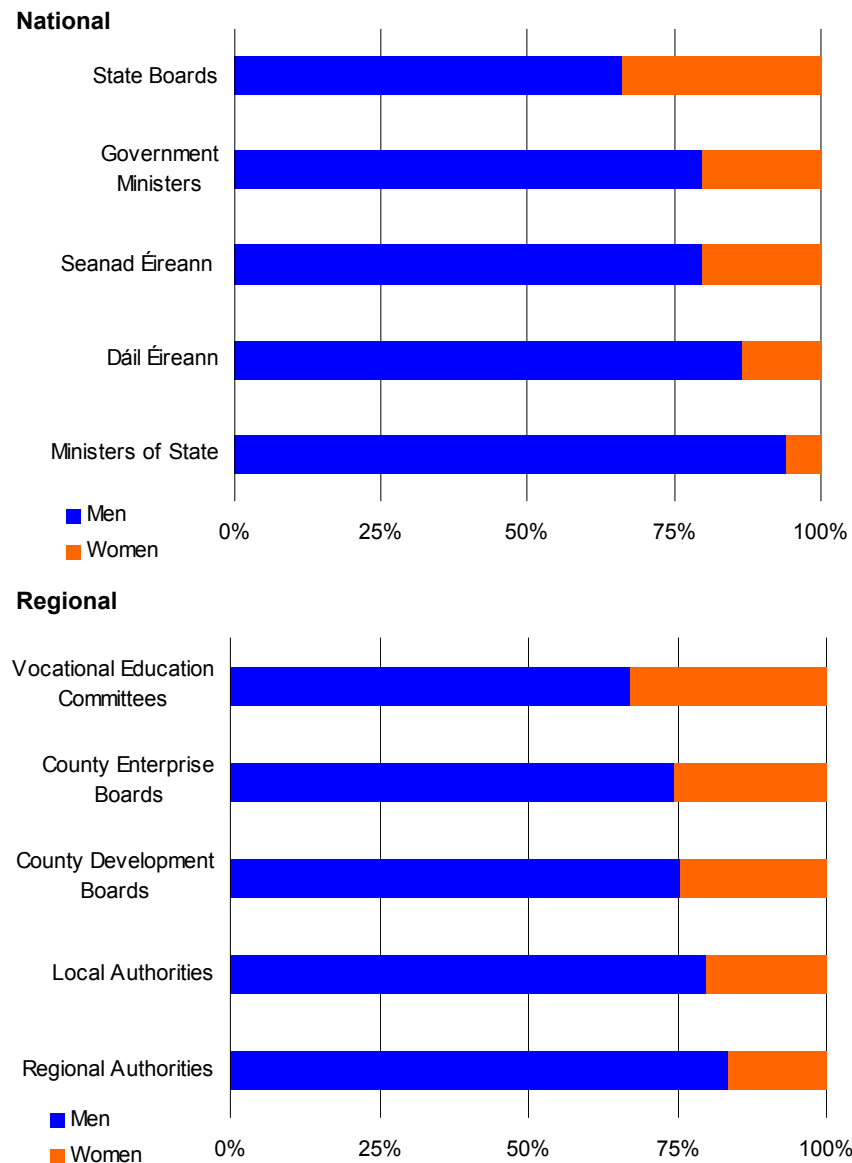
Country	% female representatives				
	2003	2004	2005	2006	2007
Sweden	45.3	45.3	45.3	47.3	47.3
Finland	37.5	37.5	37.5	38.0	42.0
Denmark	38.0	38.0	36.9	36.9	36.9
Netherlands	36.7	36.7	36.7	36.7	36.7
Spain	28.3	36.0	36.0	36.0	36.0
Belgium	35.3	34.7	34.7	34.7	34.7
Austria	33.9	33.9	33.9	32.2	32.2
Germany	32.2	32.8	31.8	31.6	31.6
Lithuania	10.6	22.0	22.0	24.8	24.8
EU 27	20.8	21.7	22.0	22.5	23.4
Luxembourg	16.7	23.3	23.3	23.3	23.3
Bulgaria	26.3	26.3	22.1	22.1	22.1
Estonia	18.8	18.8	18.8	18.8	21.8
Portugal	19.1	19.1	21.3	21.3	21.3
Poland	20.2	20.2	20.4	20.4	20.4
United Kingdom	17.9	18.1	19.7	19.7	19.7
Slovakia	19.3	16.7	16.7	20.0	19.3
Latvia	21.0	21.0	21.0	19.0	19.0
France	12.2	12.2	12.2	12.2	18.5
Italy	11.5	11.5	11.5	17.3	17.3
Greece	8.7	14.0	13.0	13.0	16.0
Czech Republic	17.0	17.0	17.0	15.5	15.5
Cyprus	10.7	16.1	16.1	14.3	14.3
Ireland	13.3	13.3	13.8	13.8	13.3
Slovenia	12.2	12.2	12.2	12.2	12.2
Romania	10.7	11.4	11.2	11.2	11.2
Hungary	9.8	9.1	9.1	10.4	10.4
Malta	7.7	9.2	9.2	9.2	9.2

Source: Inter-parliamentary union database

- ◆ Equal participation and representation of women and men in decision-making is one of the five objectives of an EU Council Decision adopted in 2000 for a Community Framework Strategy on Gender Equality.
- ◆ In the 2007 general election in Ireland, 13% of TDs elected to the Dáil were women. This placed Ireland at 23rd place in the EU in the proportion of women in parliament. The Nordic countries had the highest participation of women in parliament with rates of over 47% in Sweden and 42% in Finland in 2007 (see Table 1.17).
- ◆ There was a much higher proportion of men than women in regional and local decision-making structures in Ireland in 2007, with men accounting for around 80% of representatives in both local and regional authorities. The VEC's had the highest proportion of women of the structures examined with women representing almost 33% of their membership (see Graph 1.18).

³¹ Lower house female representation as of December 31st for 2003-2006, October 10th for 2007.

1.18 Ireland: Women and men in decision-making, 2007³²



Source: CSO Social Statistics Integration

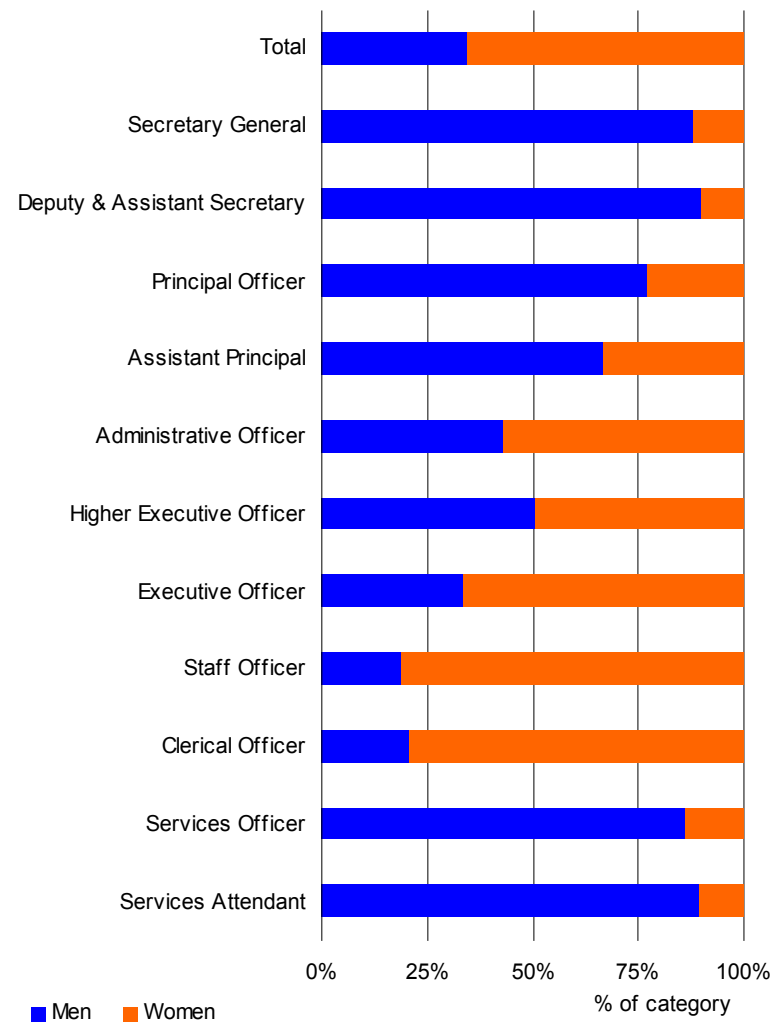
³² State Board figures as of end 2006. Other national figures describe position following 2007 elections. Regional figures as of early November 2007.

1.19 Ireland: Civil Service general service grades³³, 2005

Grade	% of grade	
	Men	Women
Secretary General	88.2	11.8
Deputy & Assistant Secretary	90.0	10.0
Principal Officer	77.2	22.8
Assistant Principal	66.7	33.3
Administrative Officer	43.0	57.0
Higher Executive Officer	50.7	49.3
Executive Officer	33.8	66.2
Staff Officer	18.8	81.2
Clerical Officer	20.7	79.3
Services Officer	86.3	13.7
Services Attendant	89.5	10.5
Total	34.6	65.4
Total persons	8,243	15,594

Source: Department of Finance

- ◆ In 2005, 65.4% of Irish civil servants in general service grades were women. At clerical grades, 79.3% of staff were women. In contrast, just under 12% of those at Secretary General level were female. Middle management grades of Higher Executive Officer and Administrative Officer were the most gender balanced of all grades (see Table 1.19 and graph).



³³ See note in Appendix 1.

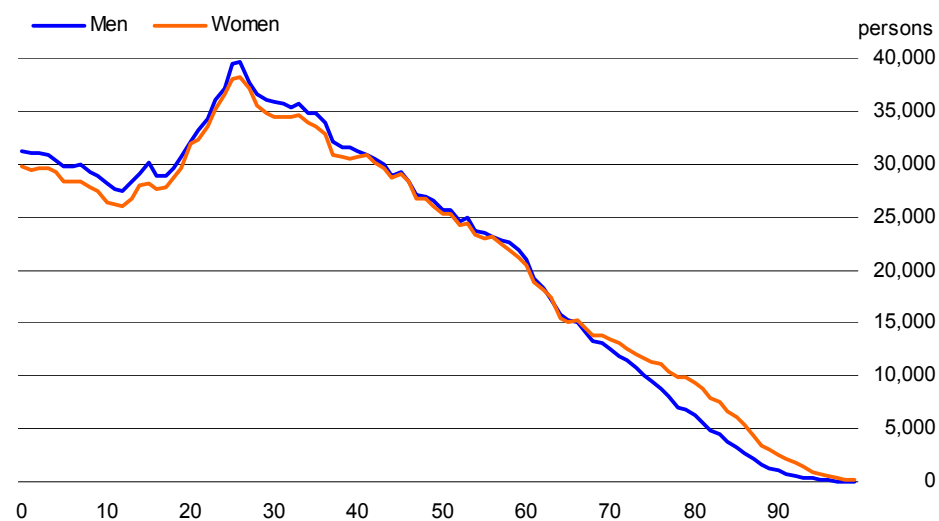
Population

2.1 Ireland: Population by age group, 2006

Age	000s		Men per 100 women
	Men	Women	
0-19	591.3	563.4	105
20-29	362.0	353.5	102
30-64	960.8	940.9	102
65-69	70.9	72.5	98
70-74	56.5	62.6	90
75-79	40.1	52.3	77
80-84	24.7	40.2	61
85 and over	14.8	33.2	45
Total	2,121.2	2,118.7	100

Source: CSO Census of Population

Ireland: Age composition of population, 2006



Source: CSO Census of Population

2.2 EU: Men per 100 women, 2006

Country	number				Total
	0-19	20-29	30-64	65 & over	
Ireland	105	102	102	79	100
Malta	106	106	101	73	98
Sweden	105	104	103	77	98
Greece	107	109	99	80	98
Denmark	105	102	102	75	98
Luxembourg	105	103	102	70	98
Netherlands	105	101	102	74	98
Cyprus	105	103	96	82	97
Spain	106	106	101	73	97
Slovenia	106	106	103	62	96
United Kingdom	105	101	98	76	96
Finland	104	105	101	67	96
Belgium	105	101	101	71	96
Germany	105	103	102	70	96
Czech Republic	105	105	99	64	95
EU 27	105	103	99	70	95
Romania	105	105	97	69	95
Austria	105	102	99	67	95
France	105	101	97	70	95
Italy	106	103	99	71	94
Slovakia	105	104	96	60	94
Bulgaria	105	105	96	71	94
Portugal	105	103	95	72	94
Poland	105	103	96	61	94
Hungary	105	104	93	58	90
Lithuania	105	103	89	52	87
Latvia	104	103	89	48	85
Estonia	106	103	87	50	85
Turkey	104	104	102	:	102
Iceland	105	103	105	83	102
Macedonia, TFYR	106	106	101	81	101
Norway	105	102	103	73	98
Switzerland	106	100	100	71	96
Croatia	105	104	97	63	93

Source: Eurostat, CSO Census of Population

- ◆ In 2006, Ireland had the most gender balanced population in the EU with 100 men per 100 women. The proportion of men to women in the population decreased with age, from 105 men per 100 women in the 0-19 age group down to 45 men per 100 women in the 85 years and over age group (see Tables 2.1 and 2.2).

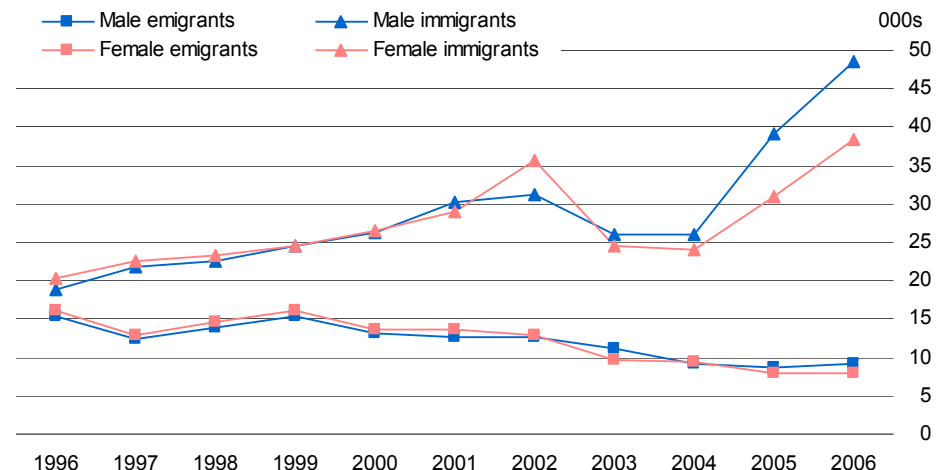
2.3 Ireland: Migration by age group, 1996 and 2006

Age group	000s			
	1996		2006	
	Men	Women	Men	Women
Emigrants	15.3	16.0	9.1	7.8
0-14	0.4	0.6	0.1	0.2
15-24	9.8	11.7	4.0	3.6
25-44	5.1	3.0	4.2	3.6
45-64	0.0	0.7	0.5	0.1
65 & over	0.0	0.0	0.4	0.4
Immigrants	18.8	20.3	48.5	38.4
0-14	3.1	3.6	4.4	4.9
15-24	4.2	6.7	12.8	11.9
25-44	8.7	8.1	27.7	19.0
45-64	2.2	1.3	3.0	2.0
65 & over	0.6	0.6	0.6	0.7
Net migration	3.5	4.3	39.4	30.6
0-14	2.7	3.0	4.3	4.7
15-24	-5.6	-5.0	8.8	8.3
25-44	3.6	5.1	23.5	15.4
45-64	2.2	0.6	2.5	1.9
65 & over	0.6	0.6	0.2	0.3

Source: CSO Migration estimates

- ◆ The migration pattern for men increased from net immigration of 3,500 men in 1996 to net immigration of 39,400 men in 2006. For women, the corresponding increase in net immigration was from 4,300 women in 1996 to 30,600 women in 2006 (see Table 2.3).
- ◆ In 1996, there were 15,300 male emigrants and 16,000 female emigrants from Ireland. More than half of both the men and women emigrating were aged between 15 and 24 years. By 2006 the number of emigrants had declined to 9,100 men and 7,800 women (see Table 2.3).
- ◆ The number of males immigrating to Ireland more than doubled between 1996 and 2006, rising from 18,800 in 1996 to 48,500 in 2006. The number of female immigrants increased from 20,300 to 38,400 over the same period, an increase of almost 90% (see Table 2.3 and Graph 2.4).

2.4 Ireland: Migration, 1996-2006



Source: CSO Migration estimates

- ◆ The pattern of emigration has been almost identical for women and men in Ireland since 1996. There was also little gender variation in immigration patterns between 1996 and 2001, but there have been stronger gender differences in recent years. In 2002 there were 4,400 more women than men immigrating to Ireland, but by 2006 the number of male immigrants exceeded the number of female immigrants by more than 10,000 (see Graph 2.4).

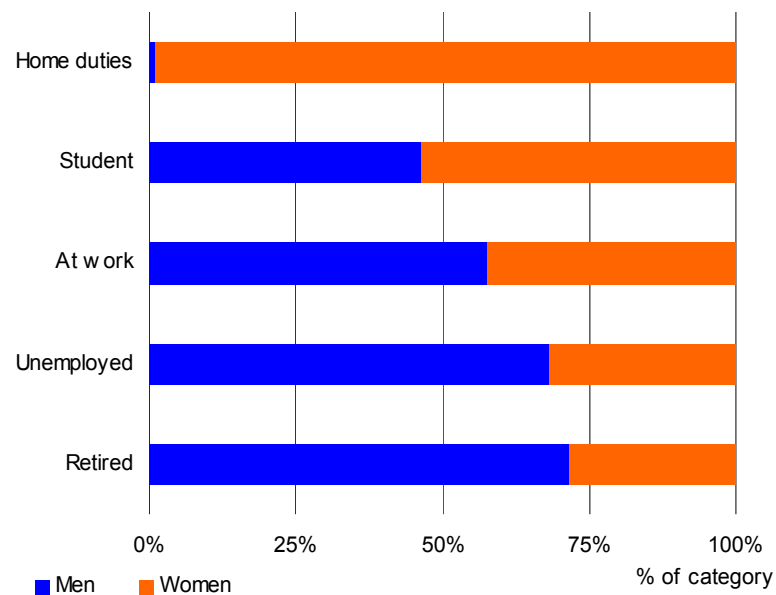
2.5 Ireland: Principal economic status, 1997 and 2007

persons aged 15 years & over (000s)

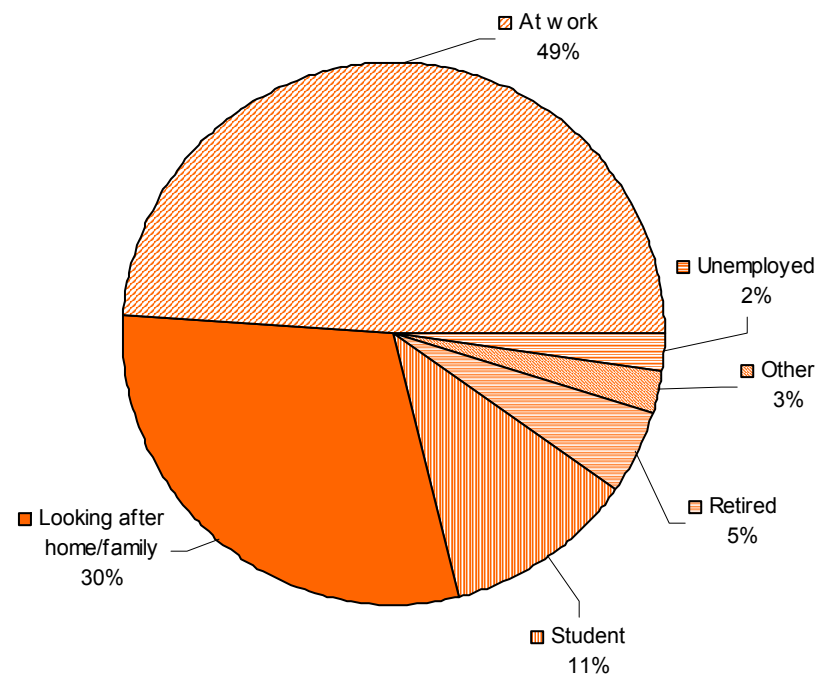
Principal economic status	1997		2007	
	Men	Women	Men	Women
Total in labour force	956.2	561.1	1,244.5	888.6
At work	825.6	512.8	1,162.7	850.7
Unemployed	130.6	48.3	81.8	37.9
<i>% in labour force</i>	<i>69.1</i>	<i>39.2</i>	<i>72.4</i>	<i>51.0</i>
Total not in labour force	426.8	870.9	473.5	852.5
Student	176.1	181.9	172.6	197.9
Looking after home/family	9.2	588.0	5.8	522.8
Retired	179.5	66.2	216.2	85.5
Other	62.0	34.8	78.9	46.3
<i>% not in labour force</i>	<i>30.9</i>	<i>60.8</i>	<i>27.6</i>	<i>49.0</i>

Source: CSO QNHS³⁴

2007



Principal economic status of women, 2007



- ◆ Just over half of women (51.0%) aged 15 years and over described themselves as members of the labour force (at work or unemployed) in 2007 compared to 39.2% in 1997. The proportion of men describing themselves as being in the labour force over the same period increased from 69.1% in 1997 to 72.4% in 2007 (see Table 2.5).
- ◆ Of those not in the labour force in 2007, 61.3% of women were looking after home or family, compared to only 1.2% of men. Just under three-quarters (71.7%) of persons describing themselves as retired in 2007 were men (see Table 2.5).

³⁴ LFS (April 1997) and QNHS (March-May, 2007).

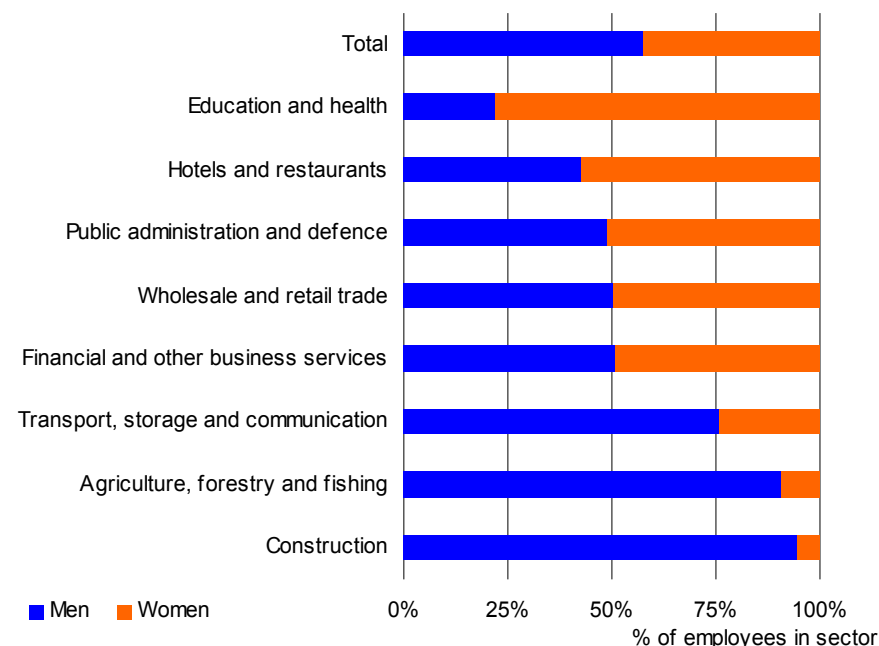
Employment

3.1 Ireland and EU: Employment by economic sector, 2006

NACE sector	% of sex in employment aged 15 & over			
	Ireland		EU 27	
	Men	Women	Men	Women
Agriculture, forestry and fishing	8.9	1.3	6.7	5.0
Other production industries	17.6	9.8	24.9	13.3
Construction	21.5	1.6	13.1	1.4
Wholesale and retail trade	12.4	16.5	13.2	15.6
Hotels and restaurants	4.3	7.8	3.4	5.3
Transport, storage and communication	7.9	3.4	8.2	3.5
Financial and other business services	11.7	15.3	11.7	12.8
Public administration and defence	4.4	6.3	7.1	7.2
Education	3.3	11.3	3.7	11.2
Health	3.0	19.5	3.8	16.7
Other services	5.0	7.4	4.3	8.0
Total	100.0	100.0	100.0	100.0
Persons in employment (000s)³⁵	1,162	855	118,730	95,118

Source: Eurostat LFS, CSO QNHS³⁶

Ireland



- ◆ The education and health sectors employed 30.8% of all women who were aged 15 or over and in employment in Ireland and 27.9% of women in the EU in 2006. The construction sector employed the lowest proportion of women, with men representing 95% of employees in the Irish construction sector in 2006 (see Table 3.1 and graph).
- ◆ In Ireland, public administration and defence, the wholesale and retail trade, and financial and other business services sectors had the most gender balanced workforces in 2006 (see graph).

³⁵ EU 27 percentage breakdown excludes NACE sector not stated, total in employment includes NACE sector not stated.

³⁶ QNHS (March-May 2006).

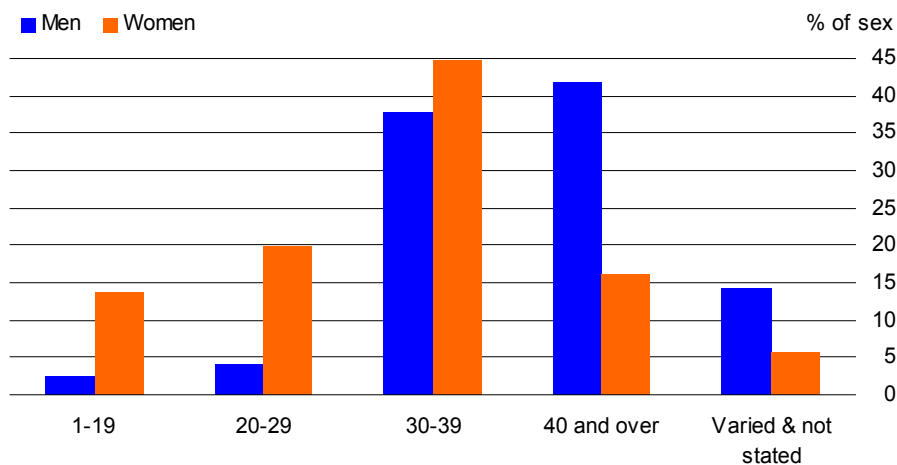
3.2 Ireland: Employment by marital status and usual hours worked, 2007

Usual hours worked	% of sex/marital status category							
	Single		Married		Separated / divorced		Widowed	
	Men	Women	Men	Women	Men	Women	Men	Women
1-19	3.9	11.4	1.3	15.5	1.7	13.5	5.1	24.6
20-29	4.5	13.4	3.5	25.3	4.0	24.1	12.2	26.8
30-39	41.8	50.1	34.6	40.5	35.4	40.0	24.5	31.3
40 and over	38.7	20.3	44.1	12.5	43.1	15.8	38.8	8.4
Varied & not stated	11.1	4.8	16.6	6.2	15.8	6.6	19.4	9.5
Total	100.0	100.0	100.0	100.0	100.0	100.0	100.0	100.0
Total persons (000s)	517.1	405.1	639.3	428.2	29.7	48.2	9.8	17.9

Source: CSO QNHS³⁷

- ◆ Over 44% of married men worked for 40 or more hours in paid employment per week compared to 12.5% of married women. In contrast 25.3% of married women worked for 20-29 hours per week compared to 3.5% of married men (see Table 3.2).
- ◆ Just over half of single women (50.1%) usually worked between 30 and 39 hours per week compared to 41.8% of single men (see Table 3.2).

Total persons in employment by sex and usual hours worked, 2007



³⁷ QNHS (March-May 2007).

3.3 Ireland: Pension coverage of persons in employment, 2002 and 2005

Pension coverage	% of sex in 20-69 age group			
	2002		2005	
	Men	Women	Men	Women
Occupational pension	34.8	36.3	38.2	42.8
Personal pension	17.7	6.1	16.7	5.8
Both occupational & personal pension	3.4	2.2	3.4	2.0
No pension	44.1	55.4	41.7	49.4
Total	100.0	100.0	100.0	100.0

Source: CSO QNHS³⁸

- ◆ In 2005, 41.7% of men and 49.4% of women aged 20-69 in employment had no pension provision other than the State pension. In 2002, the corresponding figures were 44.1% and 55.4% respectively (see Table 3.3).
- ◆ In 2005, 38.2% of men and 42.8% of women in employment had occupational pensions. The corresponding figures in 2002 were 34.8% of men and 36.3% of women. There was a greater difference in the coverage of personal pensions in 2005, 16.7% of men had a personal pension, compared to 5.8% of women (see Table 3.3).

³⁸ QNHS special modules (Q1 2002 & Q4 2005). Revised figures for 2005.

3.4 Ireland: Unemployment rates by age group, 1997 and 2007

% unemployed in each age group

Age group	1997		2007	
	Men	Women	Men	Women
15-19	20.2	23.2	14.9	12.4
20-24	15.7	12.5	7.8	6.6
25-34	10.1	9.5	5.0	3.9
35-44	9.4	9.0	3.7	3.8
45-54	9.4	9.4	3.8	3.2
55-59	7.3	5.6	3.2	3.1
60-64	5.0	3.9	1.9	* ³⁹
65 and over	1.5	6.5	*	*
Total	10.4	10.3	4.7	4.2

Source: CSO QNHS⁴⁰

3.5 Ireland: Unemployment rates⁴¹ and long-term unemployment rates, 1997-2007

% of labour force

Year	Unemployment rates		Long-term unemployment rates	
	Men	Women	Men	Women
1997	10.4	10.3	6.3	4.6
1998	8.0	7.4	4.7	2.7
1999	5.9	5.5	3.1	1.6
2000	4.3	4.2	2.0	0.9
2001	3.8	3.5	1.5	0.7
2002	4.5	3.7	1.6	0.6
2003	4.7	3.9	1.8	0.9
2004	4.9	3.7	1.8	0.8
2005	4.6	3.8	1.8	0.7
2006	4.5	4.1	1.7	0.9
2007	4.7	4.2	1.6	0.8

Source: CSO QNHS³⁰

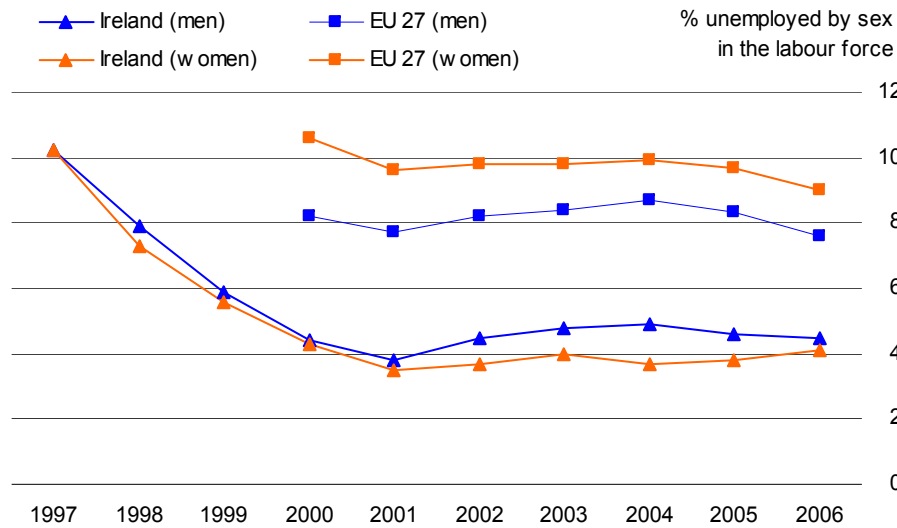
- ◆ The unemployment rate in Ireland was 10.4% for men and 10.3% for women in 1997. By 2007, these rates had decreased to less than half of the 1997 levels at 4.7% for men and 4.2% for women. This drop was reflected in all age groups. The unemployment rate for both men and women tended to decrease with age in both 1997 and 2007 (see Table 3.4).
- ◆ The unemployment rate for men decreased from 10.4% in 1997 to a low of 3.8% in 2001. This rate rose to 4.9% in 2004 but fell to 4.7% in 2007. The unemployment rate for women showed a similar pattern up to 2001, falling from 10.3% in 1997 to 3.5% in 2001 and then increasing to 4.2% in 2007 (see Table 3.5).
- ◆ The long-term unemployment rate for Irish men fell from 6.3% in 1997 to 1.6% in 2007. The corresponding decrease for women was from 4.6% in 1997 to 0.8% in 2007 (see Table 3.5).

³⁹ * Estimate unreliable due to small population size.

⁴⁰ LFS (April 1997) and QNHS (March-May, 2007).

⁴¹ EU Structural Indicator <http://europa.eu.int/comm/eurostat/structuralindicators>.

3.6 Ireland and EU: Unemployment rates, 1997-2006



Source: Eurostat LFS, CSO QNHS⁴²

- ◆ In 2006, Ireland had the lowest female unemployment rate in the EU at 4.1% compared to an EU average of 9.0%. In the same year, Ireland's male unemployment rate was the sixth lowest in the EU, at 4.5%, compared with the EU average of 7.6% (see Graph 3.6 and Table 3.7).
- ◆ Ireland had the lowest reported rate of unemployment among men and women aged 55-64 in the EU in 2006. The EU average unemployment rate for women in this age group was 6.2%, while in Ireland the rate was 2.0%. For men the corresponding rates were 6.2% in the EU and 2.5% in Ireland (see Table 3.7).

3.7 EU: Unemployment rates, 2006

Country	% of labour force		% of 55-64 age group	
	Men	Women	Men	Women
Ireland	4.5	4.1	2.5	2.0
Denmark	3.3	4.5	3.5	4.3
United Kingdom	5.7	4.9	3.5	2.3
Netherlands	4.1	5.0	4.6	4.3
Austria	4.3	5.2	4.3	:
Cyprus	3.9	5.4	3.3	:
Lithuania	5.8	5.4	:	:
Estonia	6.2	5.6	:	:
Romania	8.2	6.1	3.8	:
Latvia	7.4	6.2	7.7	:
Luxembourg	3.5	6.2	:	:
Slovenia	4.9	7.2	2.7	:
Sweden	6.9	7.3	4.9	3.8
Hungary	7.2	7.8	4.0	3.9
Finland	7.4	8.1	6.9	6.7
Czech Republic	5.8	8.8	5.1	5.6
Italy	5.4	8.8	2.8	2.9
Malta	6.5	8.9	:	:
EU 27	7.6	9.0	6.2	6.2
Portugal	6.5	9.0	7.3	5.2
Belgium	7.4	9.3	4.2	5.7
Bulgaria	8.6	9.3	7.5	8.3
France	8.4	9.9	5.9	5.6
Germany	10.3	10.1	11.9	13.1
Spain	6.3	11.6	4.8	7.3
Greece	5.6	13.6	3.1	5.0
Slovakia	12.3	14.7	9.9	9.5
Poland	13.0	14.9	9.8	6.2
Iceland	2.6	3.1	:	:
Norway	3.4	3.3	:	:
Switzerland	3.4	4.7	2.9	3.4
Turkey	8.4	8.4	4.0	0.6
Croatia	9.8	12.7	6.9	4.7

Source: Eurostat LFS, CSO QNHS⁴³

⁴² LFS (April 1997) and QNHS (March-May, 1998-2006).

⁴³ Source: QNHS (March-May 2006). Data for Germany and France are provisional. 55-64 data are unreliable for Cyprus, Latvia, Slovenia and Croatia.

Social cohesion and lifestyles

4.1 Ireland: At risk of poverty rate⁴⁴ by most frequent economic activity, 2004 and 2006

Economic activity	%			
	2004		2006	
	Men	Women	Men	Women
Employed	7.2	6.2	6.1	6.0
Unemployed	48.5	31.3	53.7	38.0
Retired	35.9	33.6	24.4	31.3
Other inactive	34.1	36.4	32.5	29.7
Total population aged 16 & over	18.4	22.8	16.6	18.9

Source: CSO EU SILC

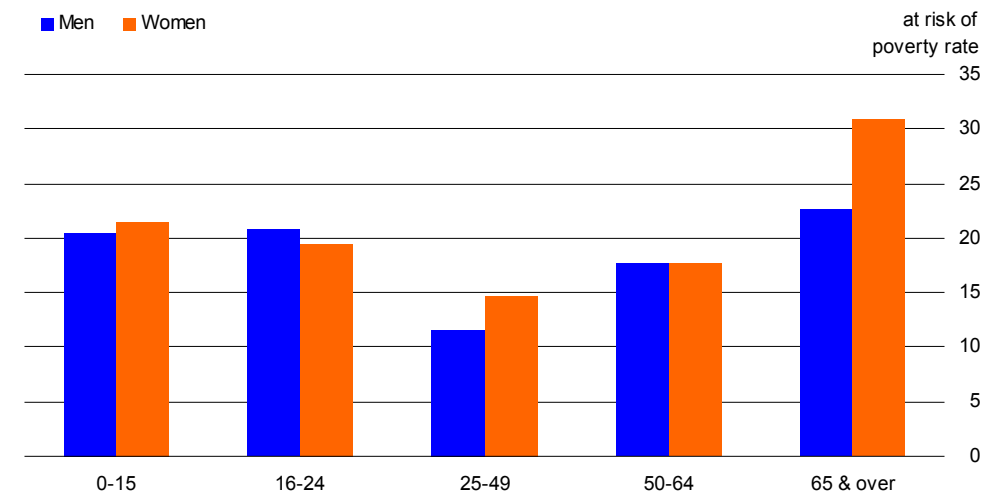
- ◆ In 2006, the at risk of poverty rate for women aged 16 and over in Ireland was 18.9%, while the corresponding rate for men was 16.6%. Employed persons had a much lower at risk of poverty rate, with the rate for men at 6.1% and for women at 6.0%. The at risk of poverty rate for unemployed women increased from 31.3% in 2004 to 38.0% in 2006 (see Table 4.1).
- ◆ In 2006, women aged 65 and over had a risk of poverty rate of 30.8% compared to the overall rate of 19.5% for women. For men, the rate for the 65 and over age group was 22.7% compared to an overall rate of 17.5% (see Table 4.2 and graph).

4.2 Ireland: At risk of poverty rate⁴⁴ by age, 2004 and 2006

Age group	%			
	2004		2006	
	Men	Women	Men	Women
0-15	20.5	23.3	20.4	21.5
16-24	15.4	20.5	20.8	19.4
25-49	12.9	15.5	11.6	14.7
50-64	21.8	23.1	17.6	17.7
65 & over	33.9	44.8	22.7	30.8
Total	18.8	23.0	17.5	19.5

Source: CSO EU SILC

2006



⁴⁴ Table 4.1 refers only to persons aged 16 and over. Indicators 4.1 and 4.2 are calculated using the EU definition of income and modified OECD equivalence scales. See note in Appendix 1.

4.3 Ireland: Lone parents⁴⁵, 1997-2007

Year	000s		
	Men	Women	% women
1997	8.1	65.6	89.0
1998	9.2	83.4	90.1
1999	9.9	78.1	88.8
2000	10.3	93.0	90.0
2001	10.5	102.9	90.7
2002	11.8	103.9	89.8
2003	10.0	105.5	91.3
2004	10.7	106.5	90.9
2005	10.1	111.9	91.7
2006	10.6	115.0	91.6
2007	9.7	122.8	92.7

Source: CSO QNHS⁴⁶

- ◆ Women represented 89.0% of lone parents with children aged under 20 in 1997 and this proportion had increased to 92.7% by 2007. The number of women living as lone parents almost doubled from 65,600 to 122,800 over the period 1997-2007, while the number of men living as lone parents increased from 8,100 to 9,700 over the same period (see Table 4.3).
- ◆ Almost 87% of female lone parents compared to almost 98% of male lone parents were aged 25 or over in 2007. The youngest child of 30% of these women was aged between 0 and 4 years. Just over 1.2% of lone parents aged under 25 were male (see Table 4.4).
- ◆ There were 83,081 persons in receipt of one-parent family payments in 2006, of whom almost 98% were women (see Table 4.5)

⁴⁵ Refers to persons living as lone parents whose youngest child was less than 20 years of age.

⁴⁶ LFS (April 1997) and QNHS (March-May, 1998-2007).

4.4 Ireland: Lone parents⁴⁵ by age of youngest child, 2007

Age of youngest child	000s			
	Parent aged under 25		Parent aged 25 & over	
	Men	Women	Men	Women
0-4	0.2	14.8	1.1	32.0
5-9	:	1.4	2.0	32.0
10-14	:	:	2.6	23.1
15-19	:	:	3.7	19.5
Total	0.2	16.2	9.5	106.6

Source: CSO QNHS⁴⁷

4.5 Ireland: Recipients of one-parent family payment by age, 2006

Age group	number		
	Men	Women	% women
24 & under	55	15,585	99.6
25-49	1,322	62,296	97.9
50-64	421	3,384	88.9
65 & over	6	12	66.7
Total	1,804	81,277	97.8

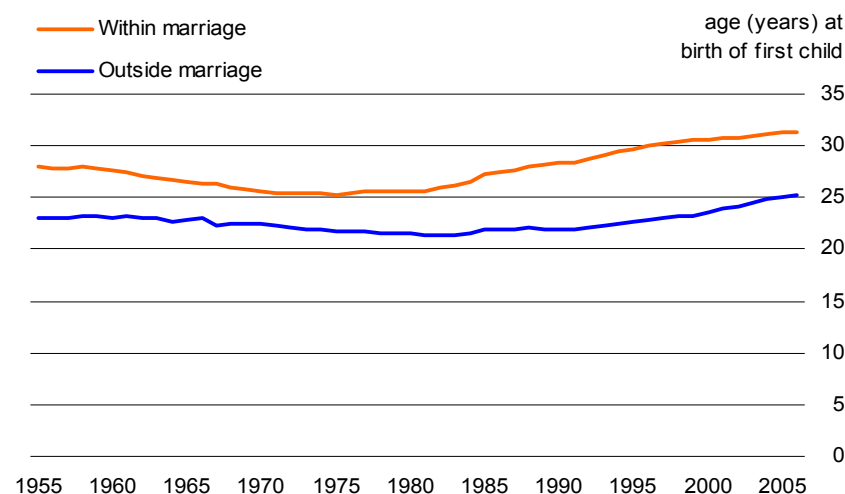
Source: Department of Social and Family Affairs

⁴⁷ QNHS (March-May 2007).

4.6 Ireland: Age of women at birth of first child, 1955-2006

Year	average age in years		
	Total births	Births within marriage	Births outside marriage
1955	27.5	27.9	23.0
1960	27.2	27.6	23.1
1965	26.2	26.6	22.9
1970	25.3	25.7	22.4
1975	24.8	25.3	21.8
1980	24.9	25.6	21.5
1985	26.0	27.2	21.8
1990	26.3	28.3	21.9
1995	27.0	29.7	22.7
2000	27.4	30.6	23.6
2001	27.6	30.7	23.9
2002	27.8	30.7	24.2
2003	28.2	30.9	24.6
2004	28.5	31.2	24.9
2005	28.7	31.4	25.1
2006	28.7	31.4	25.2

Source: CSO Vital Statistics



- ◆ The average age at which women gave birth to their first child fell over the period 1955-1980 from 27.5 years to 24.9 years. Over the past 25 years, this average age rose steadily to a value of 28.7 years in 2006 (see Table 4.6 and graph).

4.7 EU: Age of women at birth of first child and total fertility rate, 2005

Country	years		
	Average age at birth of first child	Total fertility rate	Change in TFR, 1994-2004
France	28.5	1.94	:
Ireland	28.7	1.88	0.03
Denmark	28.4	1.80	0.00
Finland	27.9	1.80	-0.01
United Kingdom	29.8	1.78	0.07
Sweden	28.7	1.77	0.04
Netherlands	28.9	1.71	0.18
Luxembourg	29.0	1.66	-0.04
Estonia	25.2	1.50	0.12
Cyprus	27.5	1.42	-0.61
Austria	27.2	1.41	-0.01
Portugal	27.4	1.40	-0.01
Spain	29.4	1.35	0.18
Germany	29.1	1.34	:
Greece	28.5	1.33	0.02
Romania	24.8	1.32	-0.09
Bulgaria	24.7	1.31	0.08
Italy	:	1.31	0.12
Latvia	24.9	1.31	:
Hungary	26.7	1.31	-0.26
Czech Republic	26.6	1.28	0.00
Lithuania	24.9	1.27	-0.28
Slovenia	27.7	1.26	-0.03
Slovakia	25.7	1.25	-0.27
Poland	25.8	1.24	:
Iceland	26.3	2.05	-0.03
Norway	27.7	1.84	-0.03
Macedonia, TFYR	25.2	1.46	-0.66
Switzerland	29.5	1.42	-0.06
Croatia	26.5	1.41	:

Source: Eurostat, CSO Vital Statistics

- ◆ The total fertility rate in Ireland in 2005 was 1.88, which was the second highest reported rate in the EU, despite only five other EU countries reporting a higher average age at the birth of the first child than Ireland (see Table 4.7).

4.8 Ireland: Religion by age group, 2006

Religion	% of sex/age group					
	0-19		20-64		65 & over	
	Men	Women	Men	Women	Men	Women
Roman Catholic	88.1	88.3	83.9	86.9	90.7	92.3
Other	6.6	6.7	7.6	7.5	6.1	5.7
No religion	2.9	2.7	6.8	4.5	1.9	0.8
Not stated	2.4	2.3	1.7	1.1	1.3	1.2
Total	100.0	100.0	100.0	100.0	100.0	100.0

Source: CSO Census of Population

- ◆ In 2006 a slightly higher percentage of women than men described themselves as Roman Catholic across these age groups. A higher percentage of men described themselves as having 'No religion' across these age groups compared to women (see Table 4.8).
- ◆ In the population usually resident in Ireland, 86.7% of men and 88.8% of women were recorded as Roman Catholic in Census 2006. Just over 60% of 'Other EU' nationals were recorded as Roman Catholic (see Table 4.9).
- ◆ The proportion of 'Other EU' nationals resident in the state professing 'No religion' in Census 2006 was 19.1% for men and 16.4% for women (see Table 4.9).

4.9 Ireland: Religion by nationality, 2006

Religion	% of sex/nationality							
	Irish		Other EU ⁴⁸		Non-EU		Total ⁴⁹	
	Men	Women	Men	Women	Men	Women	Men	Women
Roman Catholic	91.2	92.8	60.7	60.4	29.8	34.8	86.7	88.8
Church of Ireland	2.3	2.4	8.5	10.4	3.2	4.2	2.8	2.9
Other Christian religion	0.4	0.5	1.0	1.3	5.0	6.5	0.6	0.7
Presbyterian	0.4	0.4	1.6	1.7	2.0	2.4	0.5	0.5
Muslim (Islamic)	0.3	0.2	0.5	0.5	17.0	11.0	0.9	0.6
Orthodox	0.1	0.1	1.3	1.5	9.1	9.0	0.5	0.5
Methodist	0.1	0.1	0.8	0.9	2.2	2.4	0.3	0.3
Other stated religions	0.6	0.6	3.6	4.8	13.4	14.0	1.3	1.3
No religion	3.5	2.2	19.1	16.4	14.0	12.4	5.0	3.4
Not stated	1.0	0.9	2.7	2.0	4.3	3.4	1.3	1.0
Total	100.0	100.0	100.0	100.0	100.0	100.0	100.0	100.0

Source: CSO Census of Population

⁴⁸ Bulgaria and Romania are included with Non-EU countries.

⁴⁹ Excludes 'no nationality' and 'not stated'.

4.10 Ireland: Grants to high performance athletes by age of athlete, 2001 and 2006

Age of athlete	number			
	2001		2006	
	Men	Women	Men	Women
19 and under	67	24	87	46
20-24	64	23	43	16
25-29	29	11	26	12
30-34	19	6	7	5
35-44	6	4	9	1
45-64	1	1	4	1
Unknown	2	0	7	3
Total⁵⁰	188	69	183	84

Source: Irish Sports Council

- ◆ In 2006, the Irish Sports Council awarded grants under the International Carding Scheme to 183 male athletes and 84 female athletes. 47.5% of the grants to men were awarded to athletes aged 19 and under. The comparable figures for women was 54.8% (see Table 4.10).
- ◆ In 2006, the average grant amount allocated by the Irish Sports Council under the International Carding Scheme was €8,294 for men and €6,656 for women (see Table 4.11).
- ◆ Grants of €20,000 or more were allocated to 11.5% of male athletes and 6% of female athletes (see Table 4.11).

4.11 Ireland: Grants to high performance athletes, 2006

Size of grant	recipients		average allocation (€)	
	Men	Women	Men	Women
Less than €5,000	84	44	2,665	2,781
€5,000 - €9,999	40	17	5,617	5,574
€10,000 - €14,999	31	15	11,597	11,733
€15,000 - €19,999	7	3	15,000	15,000
€20,000 & over	21	5	28,797	24,200
Total⁵⁰	183	84	8,294	6,656

Source: Irish Sports Council

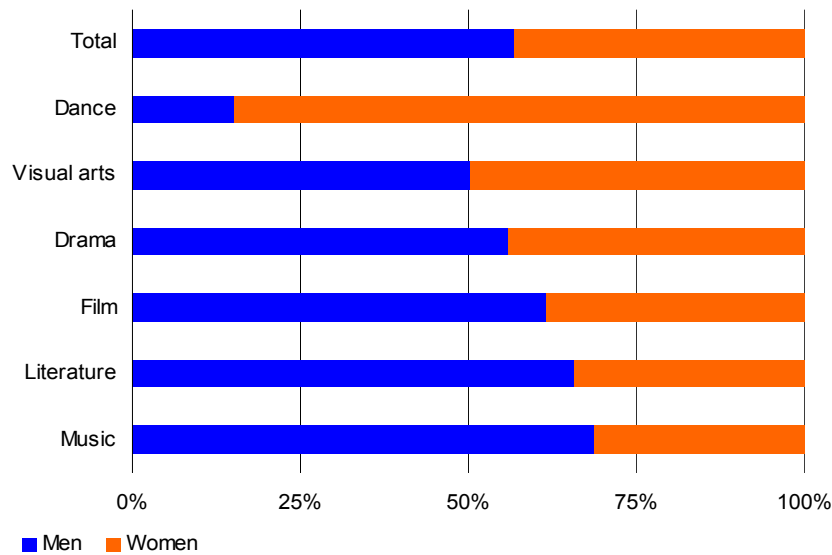
⁵⁰ The total amount of grants allocated in 2001 includes grants to 72 Junior athletes (57 males and 15 females) while the figures for 2006 include grants to 102 Junior athletes (66 males and 36 females). These grants are usually in the form of squad grants and the recipients generally receive an equal amount.

4.12 Ireland: Arts Council grants⁵¹ to artists by artform, 2006

Artform	recipients		average allocation(€)	
	Men	Women	Men	Women
Architecture	4	7	6,206	2,397
Circus/Spectacle	5	6	2,917	1,718
Community Arts	1	3	800	1,667
Dance	5	28	2,418	7,636
Drama	46	36	5,856	2,551
Education	2	5	955	1,507
Film	69	43	5,447	3,690
Literature	79	41	7,431	7,228
Multidisciplinary arts	41	33	9,718	8,713
Music	92	42	6,924	5,326
Opera	3	5	4,667	4,760
Visual arts	114	113	6,647	6,745
Traditional Arts	45	21	5,884	4,428
Total	506	383	6,637	5,719

Source: Arts Council

Grant recipients



⁵¹ The data in these tables are a representation of Arts Council financial support to the individual artist where the primary administrative relationship is with the Arts Council (Cnuas; Artists' Bursaries; Artists' Awards). Supports to the individual artist where the relationship is administered in partnership with other agencies (Artists' Schemes) have not been included in this instance as a detailed gender breakdown is not available (see Appendix 1 for further details).

4.13 Ireland: Arts Council grants to artists by size of grant, 2006

Size of grant	recipients		average allocation (€)	
	Men	Women	Men	Women
Less than €5,000	268	234	1,495	1,570
€5,000 - €9,999	101	58	7,059	6,618
€10,000 - €14,999	89	54	11,672	12,031
€15,000 & over	48	37	25,124	21,341
Total	506	383	6,637	5,719

Source: Arts Council

- ◆ The Arts Council awarded 889 grants to artists in 2006 under these sets of supports. Women represented 43.1% of recipients. The average grant awarded to men was €6,637 and to women was €5,719. Over half of the grants to both men and women were less than €5,000 in value (see Tables 4.12 and 4.13).
- ◆ Almost 23% of the grants to men and 30% of the grants to women were in the field of visual arts. Grants relating to music and literature represented a further 18.2% and 15.6% respectively of grants to men. Just under 11% of grants to women were in the field of music (see Table 4.12).
- ◆ Men received almost two-thirds (65.8%) of grants awarded in the field of literature while women received 84.8% of grants relating to dance. Grants awarded in the fields of visual arts and drama were more evenly divided between women and men (see Table 4.12 and graph).

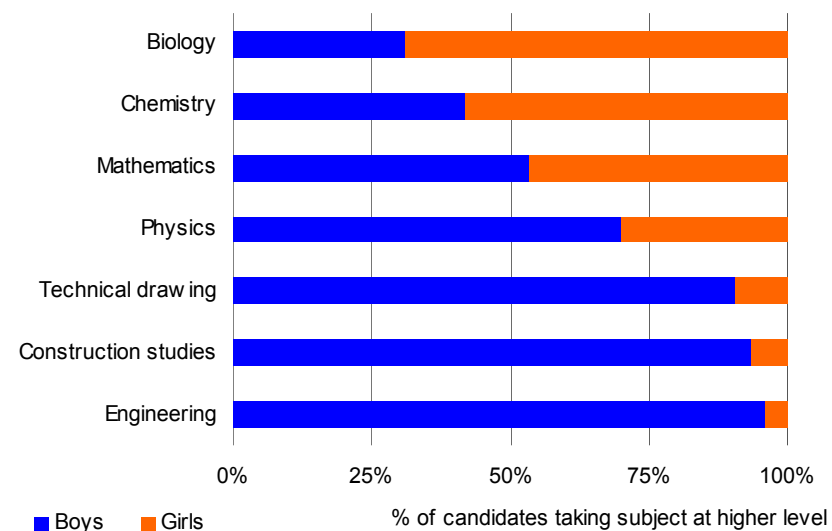
Education

5.1 Ireland: Leaving Certificate higher level candidates, 2007

Subject (higher level)	number		% of candidates		% higher level candidates attaining A or B grades	
	Boys	Girls	Boys	Girls	Boys	Girls
Biology	5,441	12,080	22.5	45.3	43.5	48.2
Mathematics	4,472	3,916	18.5	14.7	47.7	50.9
Chemistry	2,407	3,322	10.0	12.4	51.8	55.6
Physics	3,657	1,566	15.1	5.9	44.2	50.4
Construction studies	5,922	404	24.5	1.5	41.6	38.4
Technical drawing	2,610	268	10.8	1.0	46.1	48.9
Engineering	3,227	134	13.3	0.5	38.0	34.3
Home Economics - S&S	627	7,721	2.6	28.9	23.6	40.1
Art	2,494	5,037	10.3	18.9	27.1	41.3
Music	1,223	3,146	5.1	11.8	63.7	67.3
Irish	4,664	9,167	19.3	34.4	43.6	47.6
English	13,316	17,762	55.1	66.6	35.0	41.8
French	5,079	8,691	21.0	32.6	35.9	42.2
Total Leaving Certificate candidates⁵²	24,184	26,686				

Source: State Examinations Commission

Candidates in selected higher level subjects, 2007



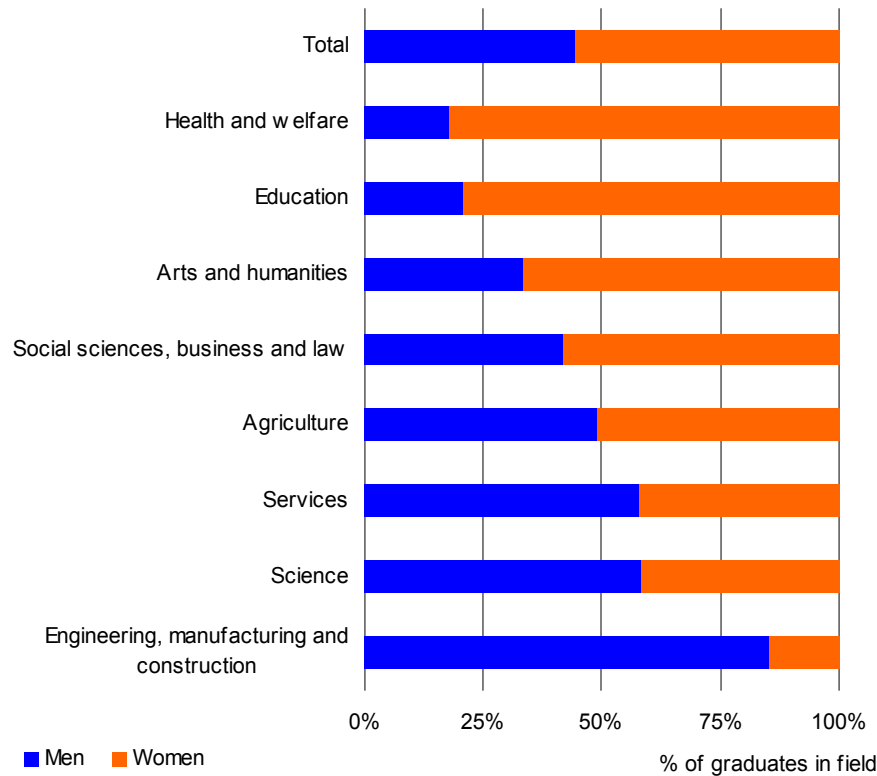
- ◆ 52.5% of students sitting the Leaving Certificate in 2007 were female. Two-thirds (66.6%) of girls sitting the Leaving Certificate took English at higher level compared to 55.1% of boys. There were higher proportions of girls than boys taking Irish and French at higher level also (see Table 5.1).
- ◆ 0.5% of girls took engineering as a higher level Leaving Certificate exam subject compared to 13.3% of boys. Boys accounted for 90.7% of candidates in technical drawing and 93.6% of candidates in construction studies at higher level (see Table 5.1 and graph).

⁵² The above data exclude candidates in the Leaving Certificate Applied Programme. School candidates, repeat candidates, external candidates, VTOS and PLC candidates are included in the table.

5.2 Ireland: Third level graduates⁵³ by field of study, 2005

Field of education	number		% of graduates	
	Men	Women	Men	Women
Agriculture	163	169	0.6	0.5
Arts and humanities	4,623	9,244	17.5	27.8
Education	684	2,623	2.6	7.9
Engineering, manufacturing and construction	6,087	1,070	23.0	3.2
Health and welfare	1,136	5,203	4.3	15.7
Science	5,605	4,053	21.2	12.2
Services	677	496	2.6	1.5
Social sciences, business and law	7,480	10,337	28.3	31.1
Total	26,455	33,195	100.0	100.0

Source: Department of Education and Science



- ◆ Women represented 55.6% of all third level graduates in Ireland in 2005. Around 28% of male and 31% of female graduates were in the social sciences, business and law field. The second highest proportion of female graduates (27.8%) was in the arts and humanities field, while the second highest percentage of male graduates (23.0%) was in engineering, manufacturing and construction fields (see Table 5.2).
- ◆ Women represented 82.1% of graduates in the health and welfare field and 79.3% of graduates in education. Men represented 85% of graduates in the engineering, manufacturing and construction field (see Table 5.2 and graph).

⁵³ At ISCED levels 5 and 6 (see Appendix 1). Total excludes graduates where field of education was not specified. Data are not comparable with earlier years due to a change in methodology and are subject to revision.

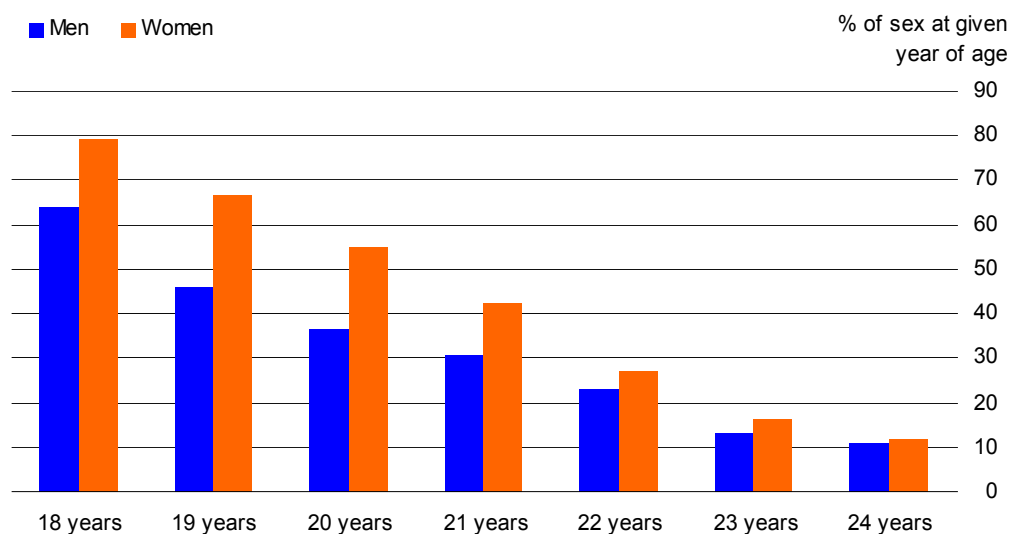
5.3 Ireland: Students as proportion of population aged 18-24, 2002 and 2007

Age	% of sex/age			
	2002		2007	
	Men	Women	Men	Women
18 years	62.2	78.9	63.7	79.0
19 years	51.3	64.9	46.0	66.8
20 years	41.2	55.8	36.6	54.8
21 years	34.9	43.0	30.4	42.1
22 years	25.1	25.7	23.0	27.1
23 years	15.5	17.6	13.0	16.0
24 years	11.1	9.6	10.6	11.7
Total 18-24 year olds	34.9	42.5	30.5	40.5

Source: CSO QNHS⁵⁴

- ◆ The proportion of male students in the 18-24 age group decreased from 34.9% in 2002 to 30.5% in 2006. Over the same period, the proportion of female students in the same age group decreased from 42.5% in 2002 to 40.5% in 2007 (see Table 5.3).
- ◆ In 2007, 79.0% of 18-year-old women were students compared to 63.7% of 18 year-old-men. This pattern, of a higher proportion of women, continued for women and men up to 24 years of age, though for 24 year olds the proportion of male and female students in the population was more similar (see Table 5.3 and graph).

2007

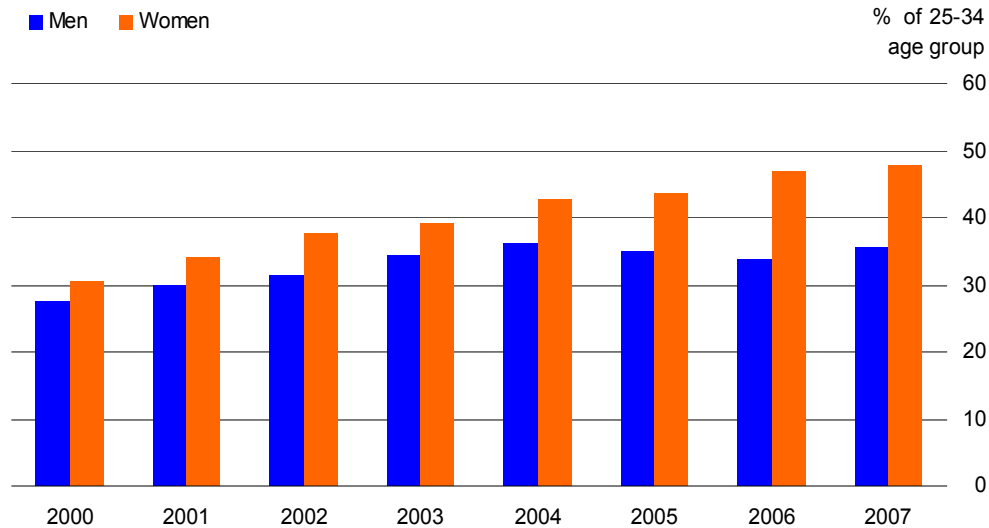


⁵⁴ QNHS (March-May 2002 & 2007).

5.4 Ireland: Persons aged 25-34 with third level qualification, 2000-2007

Year	% of 25-34 age group	
	Men	Women
2000	27.5	30.5
2001	29.8	34.0
2002	31.3	37.7
2003	34.2	39.0
2004	36.0	42.7
2005	34.9	43.7
2006	33.7	46.9
2007	35.4	47.9

Source: CSO QNHS⁵⁵



⁵⁵ QNHS (March-May 2000-2007).

5.5 Ireland: Persons aged 35-64 by highest level of education attained, 2007

Level of education attained	000s		% of 35-64 age group	
	Men	Women	Men	Women
Primary or no formal education	168.1	139.3	21.1	17.7
Lower secondary	169.5	146.0	21.3	18.6
Higher secondary	159.4	196.4	20.0	25.0
Post leaving certificate	78.7	79.7	9.9	10.1
Third level	201.7	211.0	25.4	26.8
Not stated	17.8	13.5	2.2	1.7
Total	795.1	785.9	100.0	100.0

Source: CSO QNHS⁵⁶

- ◆ The percentage of both men and women aged 25-34 with a third level qualification increased over the period 2000-2007. The percentage of men increased from 27.5% in 2000 to 36.0% in 2004 but fell back a little to 35.4% in 2007. There was a considerably larger increase for women from 30.5% in 2000 to 47.9% in 2007 (see Table 5.4 and graph).
- ◆ 36.3% of women aged 35-64 had at most lower secondary education in 2007. The percentage of men in this age group having at most lower secondary education was 42.4%. The percentage of persons aged 35-64 with third level qualifications was roughly equal for both men and women at around 25% (see Table 5.5).

⁵⁶ QNHS (March-May 2007).

5.6 Ireland: Classroom teachers⁵⁷, 1996-2006

Year	%			
	ISCED 1		ISCED 2-3	
	Men	Women	Men	Women
1996/1997	21.6	78.4	45.4	54.6
1997/1998	19.9	80.1	44.1	55.9
1998/1999	15.2	84.8	44.1	55.9
1999/2000	14.9	85.1	42.4	57.6
2000/2001	14.6	85.4	41.4	58.6
2001/2002	14.0	86.0	41.0	59.0
2002/2003	13.5	86.5	40.4	59.6
2003/2004	16.4	83.6	40.1	59.9
2004/2005	15.9	84.1	38.4	61.6
2005/2006	15.3	84.7	37.1	62.9

Source: Department of Education and Science

- ◆ Women accounted for 84.7% of teachers at primary level and 62.9% of teachers at second level in Ireland in the school year 2005/2006. At both primary and second levels the proportion of female teachers increased by over 6 percentage points between the 1996/1997 and the 2005/2006 academic years (see Table 5.6).
- ◆ In 2004/2005, 15.9% of primary school teachers in Ireland were men. Among other EU countries, the highest reported levels of male participation in primary teaching were in Greece and Spain⁵⁸ at about one-third of all primary teachers, compared to only 2.3% of all primary school teachers in Lithuania being male (see Table 5.7).
- ◆ At second level there were also more female than male teachers in all reporting countries with the exception of Switzerland (see Table 5.7).
- ◆ At third level 60.6% of academic staff were male in Ireland and men outnumbered women in almost all EU countries (see Table 5.7).

5.7 EU: Classroom teachers and academic staff, 2005

Country	%					
	ISCED 1		ISCED 2-3		ISCED 5-6	
	Men	Women	Men	Women	Men	Women
Greece	37.0	63.0	44.2	55.8	64.0	36.0
Spain	30.6	69.4	:	:	61.2	38.8
Luxembourg	28.8	71.2	:	:	:	:
Finland	24.0	76.0	35.6	64.4	53.9	46.1
Belgium	21.3	78.7	41.7	58.3	59.3	40.7
Sweden	18.7	81.3	42.4	57.6	57.5	42.5
Portugal	18.5	81.5	31.4	68.6	58.0	42.0
France	18.4	81.6	41.9	58.1	62.0	38.0
United Kingdom	18.4	81.6	39.2	60.8	60.1	39.9
Netherlands	17.8	82.2	:	:	64.8	35.2
Cyprus	17.0	83.0	39.5	60.5	58.4	41.6
Czech Republic	16.4	83.6	32.8	67.2	59.9	40.1
Germany	16.3	83.7	44.0	56.0	65.6	34.4
Ireland	15.9	84.1	38.4	61.6	60.6	39.4
Poland	15.5	84.5	30.9	69.1	59.0	41.0
Malta	14.4	85.6	42.7	57.3	73.3	26.7
Romania	13.5	86.5	33.7	66.3	57.1	42.9
Slovakia	10.4	89.6	27.0	73.0	58.1	41.9
Austria	10.2	89.8	38.8	61.2	:	:
Bulgaria	7.2	92.8	22.8	77.2	55.0	45.0
Italy	4.4	95.6	33.6	66.4	66.5	33.5
Hungary	4.1	95.9	28.8	71.2	61.2	38.8
Latvia	2.9	97.1	16.8	83.2	42.1	57.9
Slovenia	2.6	97.4	28.8	71.2	66.5	33.5
Lithuania	2.3	97.7	:	:	47.3	52.7
Turkey	54.4	45.6	:	:	61.7	38.3
Macedonia, TFYR	30.4	69.6	47.1	52.9	55.7	44.3
Switzerland	22.1	77.9	54.1	45.9	67.8	32.2
Croatia	9.9	90.1	33.1	66.9	60.7	39.3
Iceland	:	:	28.9	71.1	55.3	44.7

Source: Eurostat, Department of Education and Science

⁵⁷ Refers to both full-time and part-time staff.

⁵⁸ See country notes in Appendix 1 of report.

5.8 EU: School management personnel, 2005

Country	%			
	ISCED 1		ISCED 2-3	
	Men	Women	Men	Women
Greece		:	26.0	74.0
Bulgaria	23.6	76.4	34.8	65.2
Slovenia	35.9	64.1	40.4	59.6
Romania	36.6	63.4	47.1	52.9
Sweden	25.1	74.9	50.9	49.1
Cyprus	37.4	62.6	51.6	48.4
Slovakia	12.9	87.1	52.2	47.8
France	18.7	81.3	55.8	44.2
Austria	34.8	65.2	58.2	41.8
Italy	:	:	61.3	38.7
Finland	64.1	35.9	61.5	38.5
Ireland	49.0	51.0	67.4	32.6
United Kingdom	30.0	70.0	:	:
Netherlands	68.6	31.4	:	:
Iceland	22.4	77.6	67.2	32.8
Macedonia, TFYR	:	:	74.9	25.1

Source: Eurostat

- ◆ At primary level in Ireland in 2005, school management personnel were evenly divided between women and men with women representing 51% of management at this level. The gender breakdown of primary school managers in reporting countries in 2005 varied from 31.4% female in the Netherlands to 87.1% female in Slovakia (see Table 5.8).
- ◆ In Ireland in 2005, over 67% of second level management personnel were male. For those EU countries for which data were available, Sweden had the most gender balanced number of headteachers at second level. Greece, Bulgaria, Slovenia and Romania had a higher proportion of female management personnel in second level schools (see Table 5.8).

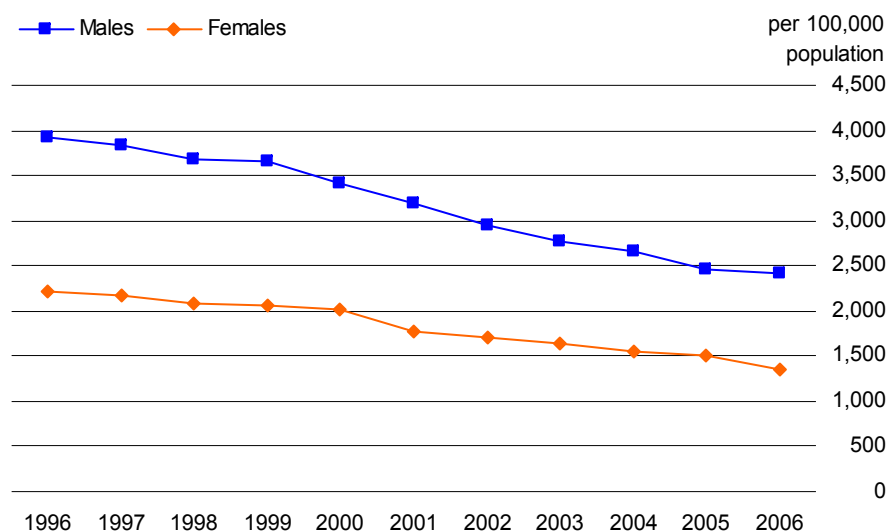
Health

6.1 Ireland: Age-sex specific death rates, 2006

per 100,000 population			
Age group	Males	Females	Male:Female ratio
0-4	102	79	1.3:1
5-14	14	9	1.6:1
15-24	80	30	2.7:1
25-64	276	177	1.6:1
65-74	2,418	1,344	1.8:1
75 and over	9,298	7,410	1.3:1

Source: CSO Vital Statistics

6.2 Ireland: Death rates for persons aged 65-74, 1996-2006



Source: CSO Vital Statistics

6.3 Ireland: Mortality by cause of death, 2006

Cause of death	number		per 100,000 population	
	Men	Women	Men	Women
Circulatory diseases	4,929	4,733	232	223
Malignant neoplasms	4,154	3,714	196	175
Accidents	617	301	29	14
Suicide	318	91	15	4

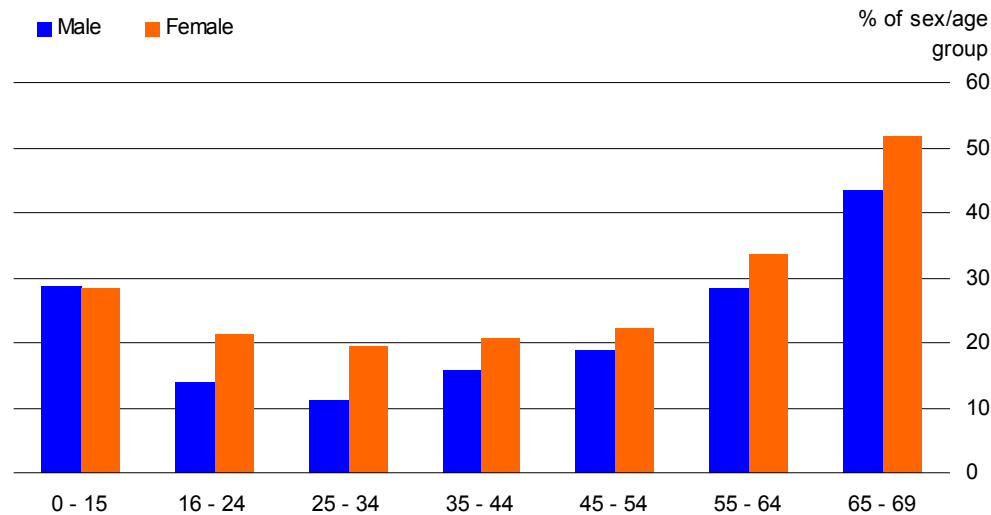
Source: CSO Vital Statistics

- ◆ In 2006, the death rate in Ireland was higher for males than for females in all age groups. The most pronounced difference was in the 15-24 age group where the male rate was 2.7 times that of the female rate (see Table 6.1).
- ◆ The death rate for the 65-74 age group decreased for both men and women over the period 1996-2006. The male rate had decreased to 62% of its 1996 level by 2006, while the female rate fell to 61% of its 1996 level over the same period (see Graph 6.2).
- ◆ The mortality rate due to accidents for men (29 per 100,000) was over twice that of women in 2006. The rate of male deaths due to suicide (15 per 100,000) was almost four times the female rate (see Table 6.3).

6.4 Ireland: Persons⁵⁹ aged 0-69 registered with the General Medical Services scheme, 2006

Age group	% of sex/age group	
	Men	Women
0 - 15	28.6	28.4
16 - 24	14.0	21.2
25 - 34	10.9	19.3
35 - 44	15.5	20.7
45 - 54	18.7	22.0
55 - 64	28.2	33.7
65 - 69	43.2	51.7
Total under 70	20.3	25.0
Persons registered (aged 0-69)	402,776	482,716

Source: HSE, CSO Census of Population



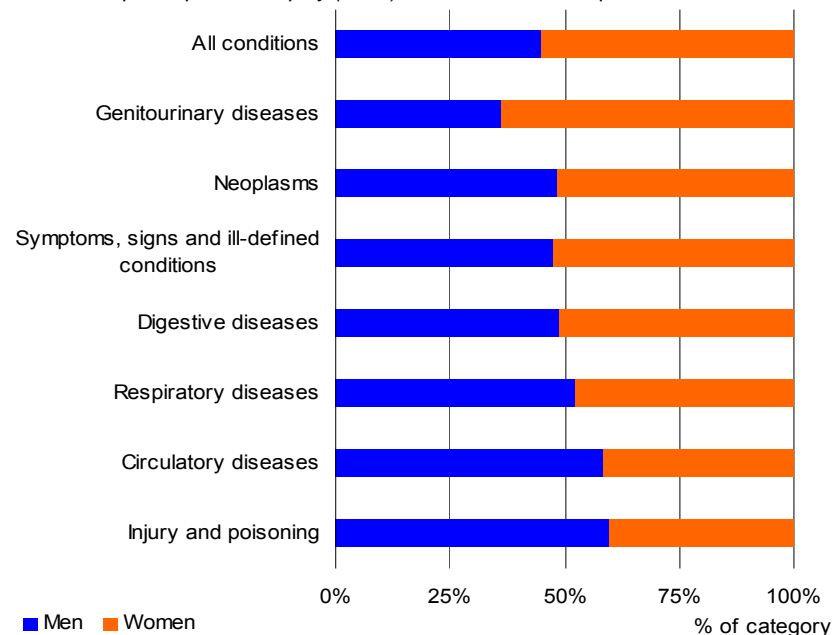
- ◆ In 2006, over 28% of boys and girls aged up to 15 were registered for a medical card. However, for all age groups aged 16 and over there was a higher proportion of women than men registered, particularly in the 25-34 age group, where 10.9% of men and 19.3% of women were registered (see Table 6.4 and graph).
- ◆ All persons aged 70 and over qualify automatically for a medical card.

⁵⁹ All persons aged 70 and over are eligible for the scheme.

6.5 Ireland: Acute hospital discharges⁶⁰ by principal diagnosis, 2006

Diagnosis ⁶¹	% of sex	
	Men	Women
Neoplasms	10.0	8.8
Diseases of the nervous system and sense organs	5.1	4.4
Circulatory diseases	8.8	5.1
Respiratory diseases	6.8	5.0
Digestive diseases	11.6	9.9
Genitourinary diseases	4.3	6.2
Complications of pregnancy, childbirth and the puerperium	0.0	18.0
Symptoms, signs and ill-defined conditions	8.5	7.6
Injury and poisoning	7.3	4.0
Other diagnoses	19.1	14.2
Supplementary classifications	18.4	16.7
Total	100.0	100.0
<i>Total discharges per 1,000 population</i>	<i>233.0</i>	<i>285.3</i>

Source: Hospital Inpatient Enquiry (HIPE), Information Unit, Department of Health and Children



⁶⁰ HIPE data covers discharges from all publicly funded acute hospitals and two private hospitals.

⁶¹ From 1st January 2006 the HIPE system includes data on patients admitted for dialysis in dedicated dialysis units. These episodes were previously excluded from HIPE, and for this reason the activity has been removed from the 2006 data reported above.

6.6 Ireland: Acute hospital discharges^{61,62} by patient type, 1996-2006

Year	per 1,000 population			
	Day Patients		In-Patients	
	Men	Women	Men	Women
1996	50.7	54.5	124.6	127.2
1997	54.4	58.3	122.7	135.2
1998	57.9	63.2	119.2	131.7
1999	61.2	70.5	117.8	152.1
2000	67.3	77.1	121.3	155.7
2001	76.8	86.7	121.8	159.5
2002	86.2	97.1	119.8	157.2
2003	93.5	103.9	119.4	160.4
2004	101.4	110.7	117.7	161.0
2005	102.1	110.7	117.1	160.1
2006	116.4	124.8	116.6	160.5

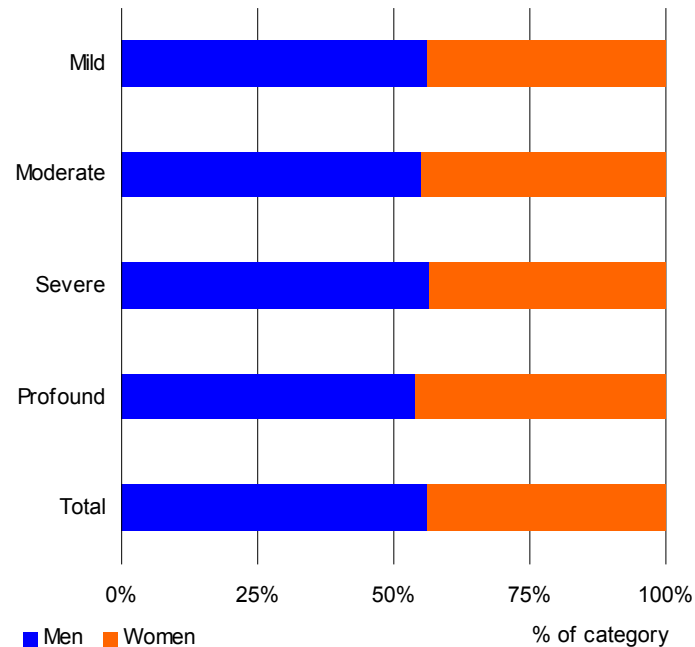
Source: Hospital Inpatient Enquiry (HIPE), Information Unit, Department of Health and Children, CSO Census of Population

- ◆ In 2006, the rate of discharges from acute hospitals was 233.0 per 1,000 population for men and 285.3 per 1,000 for women. 18% of conditions diagnosed for women related to complications of pregnancy and childbirth. For men, the most common single condition diagnosed was digestive diseases at 11.6% of discharges (see Table 6.5).
- ◆ The rate of discharge for day patients in 2006 was 116.4 per 1,000 for men and 124.8 per 1,000 for women, over double the rates for men and women in 1996 (see Table 6.6).
- ◆ Discharges of in-patients decreased for men over the period 1996-2006 from 124.6 per 1,000 in 1996 to 116.6 in 2006, while the rate for women increased from 127.2 to 160.5 per 1,000 (see Table 6.6).

6.7 Ireland: Persons with an intellectual disability by level of disability, 2007

Level	number		%	
	Men	Women	Men	Women
Mild	4,682	3,638	32.4	32.6
Moderate	5,364	4,378	37.1	39.2
Severe	2,247	1,720	15.6	15.4
Profound	554	474	3.8	4.2
Not verified	1,602	954	11.1	8.5
Total	14,449	11,164	100.0	100.0

Source: National Intellectual Disability Database



6.8 Ireland: Admissions to psychiatric hospitals and units, 2005

Condition	per 100,000 population		of which first admissions (%)	
	Men	Women	Men	Women
Organic mental disorder	16.9	17.0	48.4	48.9
Schizophrenia	168.2	105.9	17.0	16.5
Depressive disorders	185.4	245.2	35.1	27.7
Mania	79.0	100.1	21.3	16.0
Neuroses	37.7	39.9	42.9	40.6
Personality and behavioural disorders	18.8	32.1	23.8	13.2
Alcoholic disorders	131.3	67.5	33.5	29.5
Other drug disorders	38.6	13.1	41.3	34.8
Intellectual disability	6.5	4.9	13.4	14.5
Eating disorders	1.2	10.7	38.9	26.2
Other psychoses and Unspecified	42.3	41.7	41.8	35.5
Total	726.0	678.1	30.1	25.5

Source: Activities of Irish Psychiatric Services

- ◆ There were a total of 25,613 persons registered on the National Intellectual Disability database in 2007, of whom 56.4% were men. The gender breakdown at each level of disability showed a similar pattern with men representing just over half of persons in each category. Around 70% of both men and women were classified as having a mild or moderate disability (see Table 6.7 and graph).
- ◆ The rate of admission to psychiatric units for men was 726.0 per 100,000 which was higher than the rate for women at 678.1 per 100,000 population aged 16 years and over. For both women and men, the highest cause of admission was depressive disorders. The proportion was higher for women, accounting for 36.2% of all female admissions compared to 25.5% of male admissions (see Table 6.8).
- ◆ The rate of admission of men to psychiatric units for non alcohol related drug disorders was almost three times the rate for women in 2005. The male rate of admission for alcoholic disorders was almost twice the female rate (see Table 6.8).

6.9 Ireland: Recipients of Carer's Allowance and Carer's Benefit⁶², 1997-2006

Year	number		
	Men	Women	% women
1997	2,181	8,015	78.6
1998	2,593	8,823	77.3
1999	3,023	11,364	79.0
2000	3,475	13,053	79.0
2001	3,817	15,393	80.1
2002	4,199	16,811	80.0
2003	4,378	17,577	80.1
2004	4,674	19,035	80.3
2005	4,879	20,958	81.1
2006	5,561	23,560	80.9

Source: Department of Social and Family Affairs

6.10 Ireland: Recipients of Carer's Allowance and Carer's Benefit by age, 2006

Age group	number		
	Men	Women	% women
Under 25	53	275	83.8
25-49	2,302	11,148	82.9
50-64	2,481	8,701	77.8
65 & over	725	3,436	82.6
Total	5,561	23,560	80.9

Source: Department of Social and Family Affairs

6.11 Ireland: Labour force participation rate of carers⁶³ by unpaid help provided, 2006

Hours per week	labour force participation rate	
	Men	Women
1-14	79.8	62.4
15-28	75.9	56.3
29-42	76.1	53.7
43 or more	54.2	30.7
Total carers	73.2	52.8
All persons aged 15 & over	72.3	52.8

Source: CSO Census of Population

- ◆ There were 29,121 persons in receipt of caring related social welfare payments in 2006. This was almost a three-fold increase from the 10,196 recipients in 1997. Around four-fifths of recipients were women in 2006 (see Table 6.9).
- ◆ The largest number of women in receipt of caring related social welfare payments in 2006 were in the 25-49 age group. The greatest number of men was in the 50-64 age group (see Table 6.10).
- ◆ In 2006, the labour force participation rates for carers aged 15 years and over were 73.2% for men and 52.8% for women compared to rates of 72.3% of men and 52.8% of women aged 15 and over in the population as a whole (see Table 6.11).

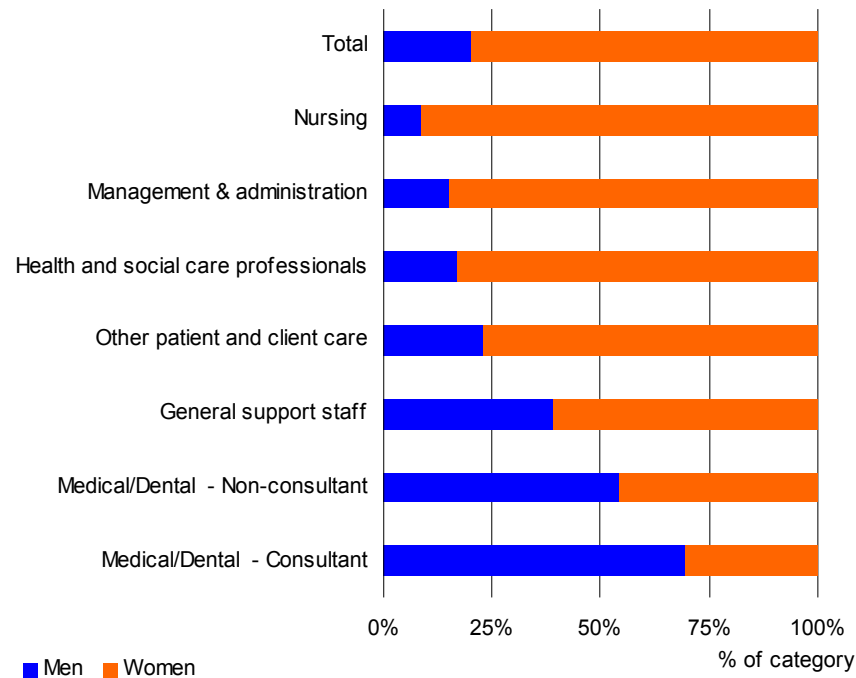
⁶² Carer's benefit was first introduced in October 2000.

⁶³ Aged 15 years and over.

6.12 Ireland: Health service personnel by grade category, 2007^{64,65}

Grade category	number		
	Men	Women	% women
Medical/Dental - Consultant	1,927	848	30.6
Medical/Dental - Non-consultant	3,374	2,830	45.6
Nursing	3,913	41,535	91.4
Health and social care professionals	3,040	14,564	82.7
General support staff	6,154	9,577	60.9
Other patient and client care	5,048	16,726	76.8
Management & administration	3,195	17,583	84.6
Total	26,651	103,663	79.5

Source: Health Service Executive, Service Personnel Census



- ◆ In 2007, 79.5% of employees in the Irish health service were women. Women were in the majority in most grades within the health service, accounting for 91.4% of nurses, 84.6% of managers and administrators and 82.7% of health and social care professionals. Women accounted for 30.6% of medical and dental consultants (see Table 6.12 and graph).

⁶⁴ As at 30th June 2007.

⁶⁵ Excludes Home Helps. Caution should be exercised in making grade category classification comparisons over time due to the reclassification of certain grades. See Appendix 1.

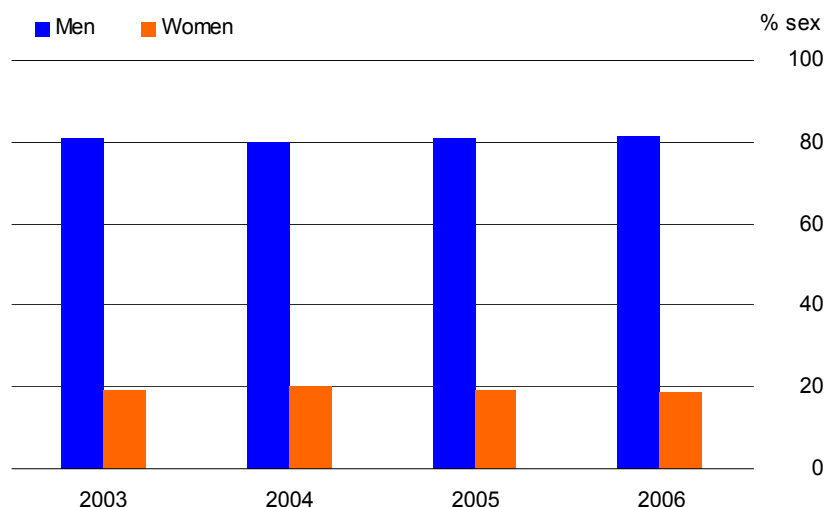
Crime

7.1 Ireland: Prisoners by offence group, 2005

Offence group	number		
	Men	Women	% women
Offences against the person	653	36	5.2
Offences against property with violence	81	3	3.6
Offences against property without violence	1,101	99	8.3
Drug offences	268	11	3.9
Road traffic offences	1,238	119	8.8
Other offences	1,345	134	9.1
Ireland	4,686	402	7.9

Source: Irish Prison Service

7.2 Ireland: Criminal convictions⁶⁶, 2003-2006



Source: CSO Crime Statistics

⁶⁶ Total Convictions = Total Headline Convictions + Assault (Non-Headline). CSO crime figures are provisional and subject to revision.

7.3 EU: Criminal convictions⁶⁷, 2003

Country	% of convictions	
	Men	Women
Spain ⁶⁸	93.2	6.8
Poland	92.5	7.5
Cyprus ⁶⁸	92.1	7.9
Bulgaria ⁶⁹	91.9	8.1
Lithuania	91.8	8.2
Slovakia ⁶⁹	91.4	8.6
Estonia ⁶⁹	91.3	8.7
Latvia	90.7	9.3
France ⁶⁹	90.5	9.5
Slovenia	89.1	10.9
Netherlands ⁶⁸	88.9	11.1
Romania ⁶⁹	88.7	11.3
Czech Republic	87.8	12.2
Hungary ⁶⁹	87.8	12.2
Greece	87.5	12.5
Italy ⁷⁰	85.5	14.5
Austria ⁶⁸	84.7	15.3
Finland	84.2	15.8
Sweden ⁶⁹	84.2	15.8
Germany ⁷⁰	83.2	16.8
United Kingdom ⁶⁸	81.9	18.1
Ireland	76.6	23.4

Source: UNECE Gender statistics database⁷¹

- ◆ There were 5,088 persons committed to prison under sentence in 2005, of whom just under 8% were women. Over 96% of persons in prison for drug related offences were men (see Table 7.1).
- ◆ There were 8,944 persons convicted⁶⁶ of crimes in 2006, of whom 81.4% were men (see Graph 7.2).
- ◆ In 2003, Ireland had the highest proportion of female offenders convicted of crimes among those countries for which data were available (see Table 7.3).

⁶⁷ The methodology for crime statistics has generally not been harmonised across countries and hence caution should be exercised in interpreting levels of crime across countries and even within the same country over time. The level of reporting and detection of crime may also vary widely across countries (see also Appendix 1 of report). Figures include juvenile convictions (<18).

⁶⁸ 2000 data.

⁶⁹ 2001 data.

⁷⁰ 2002 data.

⁷¹ <http://w3.unece.org/stat/gender.asp>.

7.4 EU: Victims of selected crimes, 2003

Country	% of category of victims					
	Homicide		Serious assault		Sexual assault	
	Men	Women	Men	Women	Men	Women
Austria ⁷²	34.7	65.3	:	:	:	:
Bulgaria ⁷³	25.9	74.1	17.4	82.6	12.6	87.4
Cyprus ⁷⁴	83.3	16.7	81.6	18.4	11.1	88.9
Czech Republic	62.6	37.4	63.1	36.9	11.8	88.2
Finland	70.7	29.3	:	:	:	:
Germany ⁷⁴	62.8	37.2	74.2	25.8	15.6	84.4
Iceland ⁷³	100.0	0.0	:	:	:	:
Ireland	80.8	19.2	77.4	22.6	22.1	77.9
Italy ⁷⁴	70.8	29.2	:	:	:	:
Latvia ⁷⁴	66.7	33.3	62.0	38.0	1.1	98.9
Lithuania	66.9	33.1	84.9	15.1	8.2	91.8
Netherlands	63.9	36.1	:	:	:	:
Norway ⁷³	47.2	52.8	:	:	:	:
Slovakia ⁷³	72.1	27.9	:	:	0.0	100.0
Slovenia ⁷⁴	73.1	26.9	81.8	22.8	9.9	90.1
Switzerland ⁷³	60.6	39.4	:	:	:	:
United Kingdom ⁷²	70.4	29.6	78.7	21.3	12.9	87.1

Source: UNECE Gender statistics database⁷⁵

⁷² 2000 data.

⁷³ 2001 data.

⁷⁴ 2002 data.

⁷⁵ <http://w3.unece.org/stat/gender.asp>.

7.5 Ireland: Homicides recorded by age of victim, 2006

Age	number	
	Men	Women
0-20	4	4
21-30	29	5
31-40	7	2
41-50	9	0
51 & over	6	1
Total	55	12

Source: CSO Crime Statistics

- ◆ Men were more likely to be victims of homicide or serious assault than women in most reporting countries in 2003. Women were more likely than men to be victims of sexual assault (see Table 7.4). When examining this data it should be taken into account that levels of reporting of particular crimes may vary across countries.
- ◆ There were 67 victims of homicide in Ireland in 2006. Of these, 55 were men. Almost 53% of male victims and almost 42% of female victims of homicide were aged between 21 and 30 years of age (see Table 7.5).

Transport

8.1 Ireland: Means of travel to work, 1996 and 2006

% of usual residents aged 15 & over at work by sex

Means of travel	1996		2006	
	Men	Women	Men	Women
On foot	8.6	16.1	8.7	13.7
Bicycle	4.3	2.5	2.6	1.0
Bus, minibus or coach	5.1	11.6	5.0	7.5
Train, DART or LUAS	1.4	2.2	2.6	3.3
Motor cycle or scooter	1.4	0.3	1.0	0.2
Motor car: Driver	47.6	44.3	53.5	61.9
Motor car: Passenger	5.7	13.4	5.1	6.2
Other means (incl. lorry or van)	6.5	0.7	13.2	0.4
Work mainly at or from home	16.1	6.2	6.4	4.5
Not stated	3.4	2.8	1.9	1.2
Total	100.0	100.0	100.0	100.0

Source: CSO Census of Population

8.2 Ireland: Time taken to travel to work, 2006

% of usual residents aged 15 & over at work by sex⁷⁶

Time taken	Men	Women
Less than ¼ of an hour	24.1	29.2
¼ of an hour to less than ½ an hour	26.3	30.9
½ an hour to less than ¾ of an hour	17.8	17.7
¾ of an hour to less than 1 hour	6.9	7.0
1 hour to less than 1½ hours	8.0	6.4
1½ hours and more	3.8	2.3
Not stated	13.0	6.5
Total	100.0	100.0

Source: CSO Census of Population

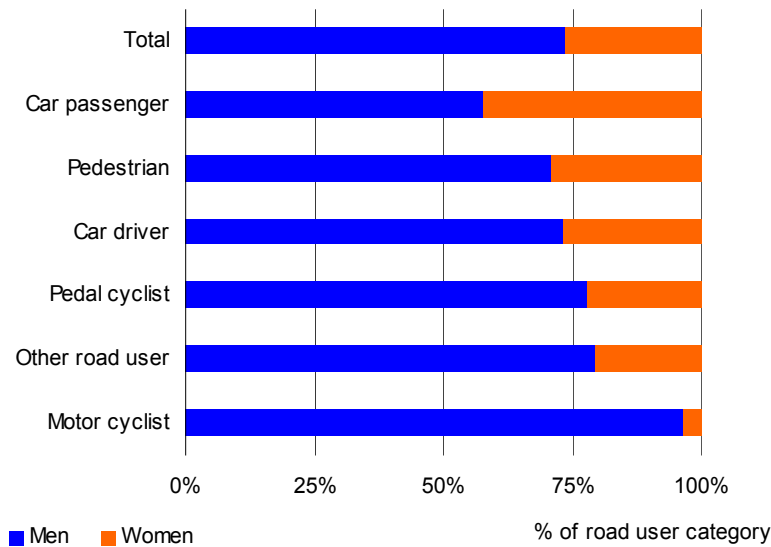
- ◆ In 1996, 47.6% of men and 44.3% of women in employment drove a car to work. By 2006, this proportion had risen to 53.5% of men and 61.9% of women. The proportion of women travelling to work as a passenger in a car decreased from 13.4% in 1996 to 6.2% in 2006 (see Table 8.1).
- ◆ 50.4% of men and 60.1% of women had a travel to work time of less than 30 minutes in 2006 (Table 8.2).

⁷⁶ Excludes persons working mainly at or from home.

8.3 Ireland: Road fatalities⁷⁷ by road user type, 2005

Road user	number	
	Men	Women
Car driver	104	38
Car passenger	44	32
Pedestrian	51	21
Other road user	27	7
Pedal cyclist	7	2
Motor cyclist	53	2
Total	286	102

Source: Road Safety Authority



⁷⁷ Collisions omitted where sex of casualty was not specified.

8.4 Ireland: Road fatalities⁷³, 1995-2005

Year	number		
	Men	Women	% women
1995	318	117	26.9
1996	342	107	23.8
1997	335	131	28.1
1998	339	115	25.3
1999	288	118	29.1
2000	302	104	25.6
2001	304	103	25.3
2002	260	101	28.0
2003	246	79	24.3
2004	259	102	28.3
2005	286	102	26.3

Source: National Roads Authority/Road Safety Authority

8.5 Ireland: Road casualties⁷³ by age of victim, 2005

Age group	% of category			
	Men		Women	
	Fatalities	Injuries	Fatalities	Injuries
0-17	8	12	12	12
18-24	31	26	20	22
25-44	34	38	25	37
45-64	15	15	21	18
65 & over	12	6	22	8
Unknown	0	3	1	3
Total	100	100	100	100
Number of casualties	286	4,688	102	3,131

Source: Road Safety Authority

- ◆ Of the 388 people who died on Irish roads in 2005, almost 74% were men. Over 96% of motor cyclists who died in road traffic accidents in 2005 were men (see Table 8.3 and graph).
- ◆ The overall level of road fatalities decreased in the period 1995-2005 by over 10% for men and by almost 13% for women. Women consistently comprised around a quarter of road fatalities over the period (see Table 8.4).
- ◆ In 2005, 34% of male fatalities occurred in the 25-44 age group. A further 31% of male fatalities were in the 18-24 age group. The highest proportion of female deaths (25%) was also in the 25-44 age group, followed by 22% in the 65 and over age group (see Table 8.5).

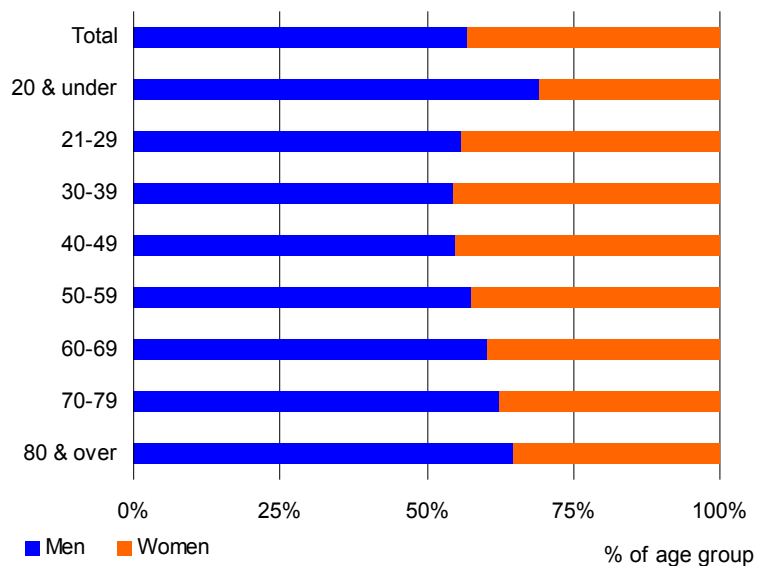
8.6 Ireland: Current driving licences⁷⁸ by age of holder, 2006

Age group	% of full licences		% of provisional licences	
	Full licence		Provisional licence	
	Men	Women	Men	Women
20 & under	1.5	0.9	25.5	17.9
21-29	14.9	15.5	40.6	43.6
30-39	23.5	25.8	20.9	20.9
40-49	21.6	23.3	8.2	9.4
50-59	18.3	17.7	3.4	5.5
60-69	12.8	11.1	0.9	2.1
70-79	5.8	4.6	0.3	0.5
80 & over	1.5	1.1	0.1	0.1
Total	100.0	100.0	100.0	100.0
Number of current licences	1,144,034	868,230	201,135	230,760

Source: Department of the Environment, Heritage and Local Government

- ◆ In 2006, 56.9% of full driving licences were held by men. There were more men than women with a full driving licence in all age groups (see Table 8.6 and graph).

Full licences



⁷⁸ Number of licences as of December 31st 2006. A small minority of licences are listed on the Departmental dataset as being held by an 'unknown' gender. These have been assigned to the male and female totals in proportion to the known distribution within each age group.

Appendices

Appendix 1 Notes and definitions

1. EU Council Policy Indicators

At risk of poverty rate Tables 1.14, 4.1, 4.2

The at-risk-of-poverty rate before/after social transfers and pensions (i.e. old-age and survivors' benefits) shows the percentage of persons in the total population having an equivalised disposable income before/after social transfers and pensions that is below the national 'at-risk-of-poverty threshold' which is set at 60% of the national median equivalised disposable income.

For Tables 1.14, 4.1 and 4.2, the EU definition of income is used. The key differences between the national and EU definitions of income are:

- ◆ The EU definition of gross income does not include income from private pensions. These are defined as private schemes fully organised by the individual, where contributions are at the discretion of the contributor independently of their employer or the State. Thus, private pensions do not include occupational or State pensions.
- ◆ The EU definition of income does not include the value of goods produced for own consumption, while the national definition does.
- ◆ All contributions to pension plans, except for those to private pension plans, are deducted from gross income when calculating disposable income under the EU definition. No pension contributions of any kind are deducted from gross income in the calculation of disposable income for national purposes from the national definition of income.
- ◆ For EU at-risk-of-poverty rates, the equivalised disposable income for each person is calculated as the household total net income divided by the equivalised household size according to the modified OECD scale (which gives a weight of 1.0 to the first adult, 0.5 to other persons aged 14 or over who are living in the household and 0.3 to each child aged less than 14). The national equivalence scale used to obtain the equivalised household size attributes a weight of 1 to the first adult in a household, 0.66 to each subsequent adult (aged 14+ living in the household) and 0.33 to each child aged less than 14. The purpose of an equivalence scale is to account for the size and composition of different income units (households) and thus allows for a more accurate comparison between households. However, numerous scales have been developed, and there is no real consensus as regards the most appropriate scale to use. For EU purposes, the modified OECD scale has been accepted to allow comparison across countries.

Civil service general service grades Table 1.19

The number of persons at each grade should be taken as broadly correct as the distinction between general service and technical grade staff is not fully precise. Data in this table referred to the situation at December 2005. In the 2006 publication the data referred to December 2004, in the 2005 publication, the data for 2003 referred to December 2003, while in the 2004 publication, the data for 2003 referred to the end of June 2003.

These figures exclude the Irish Prison Service, Garda Civilians (part), State Exams Commission, Commission for Public Service Appointment, National Council for Special Education and Foreign Affairs Local Recruits Serving Abroad due to technical reasons.

Early school leavers Table 1.13

Early school leavers are persons aged 18 to 24 meeting the following two conditions (numerator):

- ◆ the highest level of education or training attained is ISCED 0, 1 or 2 (see notes to section 5 – Education); and
- ◆ respondents declared not having received any education or training in the four weeks preceding the survey.

The denominator consists of the total population of the same age group, excluding persons who did not respond to the questions 'highest level of education or training attained' and 'participation to education and training'. Both the numerators and the denominators come from the European Union Labour Force Survey – the Quarterly National Household Survey (QNHS) in Ireland.

Employment rate Tables 1.1, 1.3, 1.7; Graphs 1.2, 1.4

The employment rate is defined as the number of persons in employment (ILO) aged 15-64 as a percentage of the population aged 15-64.

The Labour Force Survey (QNHS in Ireland) covers persons aged 15 years and over, living in private households. Persons living in collective households (halls of residence, medical care establishments, religious institutions, collective workers' accommodation, hostels, etc.) and persons carrying out obligatory military service are not included.

All data relating to the (ILO) labour force refers to the second quarter (March-May) of the reference year unless otherwise stated.

EU 27 Where possible, data for the current 27 EU Member States have been provided for all years although the EU increased its membership to 25 countries only on 1st May 2004 and to 27 countries on 1st January 2007.

EU Council Meeting The EU Council meetings held in Spring of each year normally consider a statistical annexe measuring progress among the individual Member States and at an overall EU level. The annexe to the Spring Report comprises data from the EU structural indicators.

Exit age from labour force Table 1.6 The average age at which active persons withdraw from labour the market. It is based on a probability model considering the relative changes of activity rates from one year to another at a specific age, that is, the conditional probability to stay in the labour market at a specific age in a specific year.

Gender pay gap Graph 1.12 The gender pay gap is given as average gross hourly earnings of female paid employees as a percentage of average gross hourly earnings of male paid employees. The population consists of all paid employees aged 16-64 who work 15 or more hours per week. The EU 27 value is a weighted average of national values estimated without missing countries.

ILO economic status The **International Labour Office** (ILO) classification distinguishes the following main subgroups of the population aged 15 or over:

Persons **in employment** are all persons who, in the week before the survey:

- ◆ worked for one hour or more for payment or profit, including work on the family farm or business; or
- ◆ had a job but were not at work because of illness, holidays etc.

Persons classified as **unemployed** are persons who, in the week before the survey:

- ◆ were without work;
- ◆ were available for work within the next two weeks; and
- ◆ had taken specific steps, in the preceding four weeks, to find work.

The **ILO labour force** consists of persons **in employment** and **unemployed** persons.

Income liable for social insurance Tables 1.9, 1.10 The earnings or income details for all persons, except the self-employed, do not include any social welfare payments, investment incomes or rental income. They could, however, include private pension incomes. The income details for self employed persons contain all returns including earnings, rental and investment incomes.

Private pension contributions are not liable for social insurance contributions and hence are not included in the income figures. In some cases this may be a very significant exclusion.

Persons with no income or for whom date of birth or sex was not available were excluded from these tables.

The age groups for these tables are based on the ages of persons at 31st December 2005. The tables include only persons aged between 15 and 84 years. This represents a change in methodology from the income tables first presented in *Women and Men in Ireland 2004*, which covered persons aged 15 and over. The proportion of persons in each age group in the population covered by these tables is given below. It should be noted that the proportions are low for persons aged 65 and over, with only 51.5% of men and 25.8% of women in that age group represented in these tables. The over-representation of males aged 25-34 is likely to be due to the presence of migrant short-term workers such as non-resident university students who are recorded as having earned income but who are not included in the annual population estimates.

Age group	% of age group	
	Men	Women
15-24	79.6	77.3
25-34	107.4	93.5
35-44	94.5	73.7
45-54	84.2	67.4
55-64	73.3	48.8
65-84	51.5	25.8
Total aged 15-84	85.0	67.9

Labour force participation rate Table 1.5 Persons in the (ILO) labour force expressed as a percentage of the population.

Life expectancy Tables 1.15, 1.16 The mean number of years still to be lived by a person who has reached a certain exact age, if subjected throughout the rest of his or her life to current mortality conditions (age-specific probabilities of dying).

Occupation Table 1.8	The Occupation classification used in the Census of Population and QNHS, is based on the UK Standard Occupational Classification, with modifications to reflect Irish labour market conditions. It adheres to the international occupation classification ISCO Com (88). The code to which a person's occupation is classified is determined by the kind of work he or she performs in earning a living, irrespective of the place in which, or the purpose for which, it is performed. The nature of the industry, business or service in which the person is working has no bearing upon the classification of the occupation. For example, the occupation "clerk" covers clerks employed in manufacturing industries, commerce, banking, insurance, public administration, professions and other services, etc.
Members of Parliament Table 1.17	The data in this table has been compiled by the Inter-Parliamentary Union (www.ipu.org) on the basis of information provided by national parliaments in the reference year.
Usual hours worked Tables 1.11, 3.2	The number of hours per week usually worked covers all hours including extra hours, either paid or unpaid, which the person normally works, but excludes the travel time between the home and the place of work as well as the main meal breaks (normally taken at midday). Persons who usually also work at home are asked to include the number of hours they usually work at home. Apprentices, trainees and other persons in vocational training are asked to exclude the time spent in school or other special training centres. Some persons, particularly the self-employed and family workers, may not have usual hours, in the sense that their hours vary considerably from week to week or month to month. When the respondent is unable to provide a figure for usual hours for this reason, the average of the hours actually worked per week over the past four weeks is used as a measure of usual hours.

2. Population

Migration Table 2.3; Graph 2.4	<p>Emigrants are persons resident in Ireland leaving to live abroad for over one year.</p> <p>Immigrants are persons coming to Ireland from another country for the purposes of taking up residence for over one year.</p> <p>Net migration is the net effect of emigration and immigration on a country's population in a given time.</p>
Population, Table 2.1	The total population of the country may comprise either all of the usual residents of the country (de jure) or all persons present in the country on a particular date (de facto). Published census figures for Ireland are on a de facto basis.
Principal Economic Status Table 2.5	<p>A classification is based on a single question in which respondents are asked what is their usual situation with regard to employment and given the following response categories:</p> <ul style="list-style-type: none"> ◆ At work; ◆ Unemployed; ◆ Student; ◆ Engaged on home duties; ◆ Retired; and ◆ Other.

3. Employment

ILO Labour force	See note in EU Council policy indicators section.
Long-term unemployment rate Table 3.5	The number of persons unemployed for one year or more expressed as a percentage of the (ILO) labour force.
NACE economic sector Table 3.1	Statistical Classification of Economic Activities in the European Community.
Pension coverage Table 3.3	<p>Questions on pensions were included in the Quarterly National Household Survey (QNHS) in the three months from December 2004 to February 2005. This was an update of a module on pensions asked in the same period in 2001/2002. The pensions module was asked of all persons aged 20 to 69 years who were in employment and who participated directly in the survey. The results are based on two questions 'Are you a member of your employer's pension scheme?' and 'Do you contribute to a personal pension plan?'</p> <p>Through the State Social Welfare system people are entitled to a basic flat rate pension. However, in many cases there is a need for additional pension cover if the standard of living enjoyed while at work is to be maintained into retirement. This additional or supplementary cover is provided through occupational pension schemes and personal pension arrangements. It is this additional cover which is the focus of this survey. The results do not cover pensions paid through the State Social Welfare system.</p>

Unemployment rate
Tables 3.4, 3.5, 3.7;
Graph 3.6

The number of persons unemployed expressed as a percentage of the (ILO) labour force.

Usual hours worked
Table 3.2

See note in EU Council policy indicators section.

4. Social cohesion and lifestyles

Age of women at birth of first child
Tables 4.6, 4.7

The EU definition used in Table 4.7, of the mean age of women when their first child is born, differs from the national method of calculation used in Table 4.6. Using the EU definition, for a given calendar year, the mean age of women at first birth is calculated using the fertility rates for first births by age (in general, the reproductive period is between 15 and 49 years of age). Calculated in this way from the fertility rates by age, the mean age is not weighted, i.e. the different numbers of mothers at each age are not taken into account.

The national definition of the average age at maternity of first birth is 0.5 plus the sum of the products of the ages at maternity of first live births and their ages divided by the number of first live births. Childbearing years are regarded as between the ages of 15 and 49. Live births to mothers aged less than 15 are included in the age 15 category and are divided by the age 15 population. Similarly live births to mothers aged greater than 49 are included in the age 49 category and are divided by the age 49 population.

Arts Council grants programme
Tables 4.12, 4.13

Arts Council supports for artists in 2006 were administered through 4 programmes:

1. Cnuas – an annual means tested stipend for Aosdána members
2. Artists' Bursaries – made on a competitive basis to assist individual artist in the development of their art practice;
3. Artists' Awards – made on a competitive basis to assist artists and organisations in the creation of new work;
4. Artists' Schemes – made on a competitive basis to assist artists and organisations in the production and dissemination of new work.

The data in these tables are a representation of Arts Council financial support to the individual artist where the primary administrative relationship is with the Arts Council (Cnuas; Artists' Bursaries; Artists' Awards). Supports to the individual artist where the relationship is administered in partnership with other agencies (Artists' Schemes) have not been included in this instance as a detailed gender breakdown is not available.

At risk of poverty rate
Tables 4.1, 4.2

See note in EU Council policy indicators section.

Grants to high performance athletes
Tables 4.10, 4.11

The International Carding Scheme was introduced in 1998 to provide a range of supports to assist elite athletes realise their potential to perform successfully at the highest international level. The Carding Scheme is administered by the Irish Sports Council.

Lone parents
Tables 4.3, 4.4

A lone parent family unit consists of one parent and one or more of his or her never-married children. The number of lone parent family units may be understated as there are problems identifying lone parent families particularly where the lone parent lives with his/her parents. The QNHS does not specifically ask a person if he or she is a lone parent.

One-parent family payments
Table 4.5

One-Parent Family Payment is a means-tested payment which is made to men or women who are caring for a child or children without the support of a partner. The scheme was introduced on 2 January 1997, and replaced the Lone Parents Allowance and Deserted Wife's Benefit schemes.

Total fertility rate
Table 4.7

The mean number of children that would be born alive to a woman during her lifetime if she were to pass through her childbearing years conforming to the fertility rates by age of a given year. The total fertility rate is also used to indicate the replacement level fertility; in more developed countries, a rate of 2.1 is considered to be replacement level.

5. Education

ISCED
Tables 5.2, 5.6, 5.7, 5.8

The International Standard Classification of Education (ISCED) is the basis for international education statistics.

ISCED 0 Pre-primary level of education

Initial stage of organised instruction, designed primarily to introduce very young children to a school-type environment.

ISCED 1 Primary level of education

Programmes normally designed to give students a sound basic education in reading, writing

and mathematics.

ISCED 2 Lower secondary level of education

The lower secondary level of education generally continues the basic programmes of the primary level, although teaching is typically more subject-focused, often employing more specialised teachers who conduct classes in their field of specialisation.

ISCED 3 Upper secondary level of education

The final stage of secondary education in most countries. Instruction is often more organised along subject-matter lines than at ISCED level 2 and teachers typically need to have a higher level, or more subject-specific, qualification than at ISCED 2. There are substantial differences in the typical duration of ISCED 3 programmes both across and between countries, typically ranging from 2 to 5 years of schooling.

ISCED 4 Post secondary non-tertiary education

These programmes straddle the boundary between upper secondary and post-secondary education from an international point of view, even though they may be considered as upper secondary or post-secondary in a national context. They are often not significantly more advanced than programmes at level 3 but they serve to broaden the knowledge of participants who have already completed a level 3 programme. The students tend to be older than those in ISCED 3 programmes and have usually completed ISCED 3.

ISCED 5 First stage of tertiary education

ISCED 5 programmes have an educational content more advanced than those offered at levels 3 and 4. Entry to these programmes normally requires the successful completion of ISCED level 3 or a similar qualification at ISCED level 4.

ISCED 5A: These programmes are largely theoretically based and are intended to provide sufficient qualifications for gaining entry into advanced research programmes and professions with high skills requirements. The minimum cumulative theoretical duration of these programmes is three years (full-time equivalent). The faculty must have advanced research credentials. Completion of a research project or thesis may be required.

ISCED 5B: These programmes are generally more practical/technical and occupational specific than ISCED 5A programmes. They do not prepare students for direct access to advanced research programmes. The programme content is typically designed to prepare students to enter a particular occupation.

ISCED 6 Second stage of tertiary education

This level is reserved for tertiary programmes leading to the award of an advanced research qualification. The programmes are developed to advanced study and original research. This level requires the submission of a thesis or dissertation of publishable quality that is the product of original research and represents a significant contribution to knowledge. It is not solely based on course work and it prepares recipients for faculty posts in institutions offering ISCED 5A programmes, as well as research posts in government and industry.

Classroom teachers Tables 5.6, 5.7

Classroom teachers are defined as professional personnel involved in direct student instruction: including the planning, organising and conducting of group activities whereby students' knowledge, skills and attitudes develop as stipulated by educational programmes.

The classification includes:

- ◆ Classroom teachers;
- ◆ Special education teachers in whichever setting they teach; and
- ◆ Other teachers who work with students as a whole class in a classroom, in small groups in a resource room, or one-on-one inside or outside a regular classroom;

but excludes:

- ◆ Educational staff who have some teaching duties but whose primary function is not teaching (e.g. it is managerial or administrative);
- ◆ Student teachers, teachers' aides, or paraprofessionals; and
- ◆ School management personnel with teaching responsibilities.

Country specific notes:

Denmark	ISCED 2 is included in ISCED 1
Netherlands	ISCED 1 includes ISCED 0
Iceland	ISCED 2 is included in ISCED 1
Norway	ISCED 2 includes ISCED 1

School management personnel
Table 5.8

Head-teachers are defined as school level management personnel like principals, assistant principals, headmasters, assistant headmasters and other management staff with similar responsibilities. It excludes receptionists, secretaries, clerks and other staff who support the administrative activities of the school. Head-teachers may have teaching-responsibilities. If so, the amount of teaching is included in the number of full-time equivalent teachers, while when undertaking head-counts, the personnel is pro-rated between functions to get a correct count of individuals in total employed in education.

6. Health

Acute hospital discharges
Tables 6.5, 6.6

Data on hospital discharges is obtained from the Hospital In-patient Enquiry (HIPE) system. The HIPE is a computer-based health information system designed to collect clinical and administrative data on deaths and discharges from the 60 acute public hospitals currently participating in the system. Since the mid-1990s close to 95 per cent of all discharges from acute hospitals nationally have been incorporated within the system. This includes information on all obstetric discharges which has been required of all hospitals, including maternity hospitals, since 1999. The Department of Health and Children contracts the management of the HIPE system to the Economic and Social Research Institute.

Admissions to psychiatric hospitals
Table 6.8

Covers admissions to all psychiatric in-patient facilities in Ireland. Data on admissions are obtained from two main sources, the National Psychiatric In-Patient Reporting System (NPIRS) and the Department of Health and Children's annual end-of-year returns.

Age-sex specific death rates
Table 6.1;
Graph 6.2

The number of male/female deaths in a particular age group as a proportion of the number (in units of 100,000) of men/women of that age group in the population.

Carer's Allowance and Benefit
Tables 6.9, 6.10

Carer's Allowance is a payment for carers on low incomes who live with and look after certain people in need of full-time care and attention.

Carer's Benefit is a payment made to insured persons who leave the workforce to care for a person(s) in need of full-time care and attention.

Carers
Tables 6.11

Data on carers was derived from answers to question 21 of the 2006 Census of Population questionnaire. This asked of persons aged 15 years and over whether an individual provided regular unpaid personal help for a friend or family member with a long-term illness, health problem or disability (including problems due to old age). Personal help includes help with basic tasks such as feeding or dressing. Receipt of "Carers Allowance" was not considered payment for the purposes of this question. "Meals on Wheels" staff were not considered carers for the purpose of this question. The following response categories were given:

- ◆ Yes, 1-14 hours a week;
- ◆ Yes, 15-28 hours a week;
- ◆ Yes, 29-42 hours a week;
- ◆ Yes, 43 or more hours a week; and
- ◆ No.

Cause of death categories
Table 6.3

Deaths are coded according to the 9th revision of the International Standard Classification of Diseases, Injuries and Causes of death.

General Medical Services Scheme
Table 6.4

Persons who are unable without undue hardship to arrange General Practitioner medical and surgical services plus dental and optometric services for themselves and their dependants, and all persons aged 70 and over, are provided with such services free of charge under the GMS Scheme. An eligible person is entitled to select a Doctor of his/her choice, from among those Doctors who have entered into agreements with Health Boards.

Health service personnel
Table 6.12

Data is from the Personnel Census of the Department of Health and Children and reflects the position at 30th June 2007.

Management/ Administrative includes staff who are of direct service to the public and include Consultant's Secretaries, Out-Patient Departmental Personnel, Medical Records Personnel, Telephonists and other staff who are engaged in front-line duties together with staff in the following categories: Payroll, Human Resource Management (including training), Service Managers, IT Staff, General Management Support and Legislative and Information requirements.

National Intellectual Disability Database
Table 6.7

The National Intellectual Disability Database was established in 1995 to ensure that information is available to enable the Department of Health and Children, the health boards and the voluntary agencies in the Republic of Ireland to provide appropriate services designed to meet the changing needs of people with intellectual disability (mental handicap) and their families.

The database was established on the principle that minimum information with maximum

accuracy was preferred, hence it incorporates only three basic elements of information:

- ◆ demographic details;
- ◆ current service provision; and
- ◆ future service requirements.

The objective is to obtain this information for every individual known to have an intellectual disability and assessed as being in receipt of, or in need of, an intellectual disability service. Information pertaining to diagnosis is specifically excluded, as the database is not designed as a medical epidemiological tool. The data held in any individual record represent the information available for that person at a specified point in time only. The record is updated whenever there are changes in the person's circumstances or during the annual review process in the spring of each year.

7. Crime

Criminal convictions

Graph 7.2;
Table 7.3

The UNECE gender statistics database defines "Persons convicted" as "*persons found guilty by any legal body duly authorised to do so under national law, whether the conviction was later upheld or not*". In the case of Ireland the figure given includes persons convicted or against whom the charge was held proved or order made without conviction for headline offences.

Headline offences

Crimes are classified as headline or non-headline. There are ten groups of headline crime:

- ◆ Group 1 Homicides;
- ◆ Group 2 Assaults;
- ◆ Group 3 Sexual Offences;
- ◆ Group 4 Arson;
- ◆ Group 5 Drugs;
- ◆ Group 6 Thefts;
- ◆ Group 7 Burglaries;
- ◆ Group 8 Robberies;
- ◆ Group 9 Frauds; and
- ◆ Group 10 Other Headline Offences – includes violent disorder, personation and air and road traffic related offences.

The reference year is the year in which the crime was reported or became known to the Gardaí.

Homicides

Table 7.5

In the Garda classification, Group 1 Headline Offences, homicides includes murder, attempted murder, abortion, procuring or assisting in abortion, murder threats, infanticide and manslaughter. For the purposes of the table presented in this report, only the offences of murder and manslaughter are included.

Offence categories

Table 7.1

The Irish Prison Service categorises the principal offences of persons committed to prison under sentence in 2005 using four offence groups:

- ◆ Group 1 - Offences against the Person;
- ◆ Group 2 – Offences against Property with Violence;
- ◆ Group 3 – Offences against Property without Violence; and
- ◆ Group 4 - Offences other than Offences against the Person or Property (includes drug and road traffic offences).

Serious assault

Table 7.4

The UNECE gender statistics database defines serious assault as "*Serious assaults as reported by the police, i.e. crimes that are reported to, detected by, or otherwise drawn to the attention of the police*". In the case of Ireland the figure refers to victims of crimes of headline assault and assault causing harm.

Sexual assault

Table 7.4

The UNECE gender statistics database defines sexual assault as "*Sexual assault as reported by the police. Sexual assault comprise rapes, attempted rapes and indecent and sexual assaults ("offensive behaviour" excluded)*".

8. Transport

Driving licences

Table 8.6

Data on driving licences are held in the National Vehicle and Driver File of the Department of the Environment, Heritage and Local Government. The data shown reflect the position at 31st December 2006.

Means of travel to work
Table 8.1

Data are compiled based on responses to the following questions from the 1996 and 2006 Censuses of Population:

“How do you usually travel to work, school or college?”

There were 11 response categories including a category for persons working mainly at or from home. Only one response was allowed per person.

Data in this table refer to persons aged 15 and over who are at work.

Time taken to travel to work
Table 8.2

Data are compiled based on responses to the following question from the 2006 Census of Population:

“What distance is your journey from home to work, school or college and how long does it usually take?”

Time taken to travel to work, school or college was recorded in minutes.

Data in this table refer to persons aged 15 and over who are at work, excluding those who work mainly at or from home.

Appendix 2 Data sources

Domain and Indicator		Data source
1.	EU Council Policy Indicators	
1.1	Ireland and EU: Employment rate, 1997-2007	Eurostat data explorer - Population and social conditions theme - Table: Key indicators on EU policy\Structural indicators\Employment CSO, Quarterly National Household Survey
1.2	Ireland and EU: Female employment rate, 1997-2007	Eurostat data explorer - Population and social conditions theme - Table: Key indicators on EU policy\Structural indicators\Employment CSO, Quarterly National Household Survey
1.3	EU: Employment rate, 2006	Eurostat data explorer - Population and social conditions theme - Table: Key indicators on EU policy\Structural indicators\Employment CSO, Quarterly National Household Survey
1.4	Ireland: Employment rate for persons aged 55-64, 1997-2007	CSO, Quarterly National Household Survey
1.5	Ireland: Labour force participation rate (ILO) by age group, 2007	CSO, Quarterly National Household Survey
1.6	EU: Average exit age from the labour force, 2002 and 2005	Eurostat data explorer - Population and social conditions theme - Table: Key indicators on EU policy\Structural indicators\Employment
1.7	Ireland: Employment rates of persons aged 20-44 by family status, 2007	CSO, Quarterly National Household Survey
1.8	Ireland: Persons in employment by occupation, 2002 and 2007	CSO, Quarterly National Household Survey
1.9	Ireland: Income liable for social insurance, 2005	Department of Social and Family Affairs Revenue Commissioners
1.10	Ireland: Average income liable for social insurance by age, 2005	Department of Social and Family Affairs Revenue Commissioners
1.11	Ireland: Employment by usual hours worked, 2002 and 2007	CSO, Quarterly National Household Survey
1.12	EU: Gender pay gap, 2005	Eurostat data explorer - Population and social conditions theme - Table: Key indicators on EU policy\Structural indicators\Employment
1.13	EU: Early school leavers, 2001 and 2006	Eurostat data explorer - Population and social conditions theme - Table: Key indicators on EU policy\Structural indicators\Social Cohesion CSO, Quarterly National Household Survey
1.14	EU: At risk of poverty rates, 2005	Eurostat data explorer - Population and social conditions theme – Table: Living conditions and welfare\Income and living conditions\Main indicators\Laeken Indicators
1.15	Ireland: Life expectancy at birth and at 65 years, 1925-2003	CSO, Irish Life Tables No 14, 2001-2003
1.16	EU: Life expectancy at birth, 2005	Eurostat data explorer - Population and social conditions theme - Table: Population\Demography\National data\Mortality\Life expectancy by sex and age
1.17	EU: Representation in national parliaments, 2003-2007	Inter-parliamentary union database statistical archive http://www.ipu.org/wmn-e/classif.htm
1.18	Ireland: Women and men in decision-making, 2007	CSO, Social Statistics Integration Division
1.19	Ireland: Civil Service general service grades, 2005	Department of Finance

Domain and Indicator		Data source
2. Population		
2.1	Ireland: Population by age group, 2006	CSO, Census of Population 2006, Volume 2, Ages and Marital status
2.2	EU: Men per 100 women, 2006	Eurostat data explorer - Population and social conditions theme - Table: Population\Demography\National data\Population\Population by age and sex on 1 January
2.3	Ireland: Migration by age group, 1996 and 2006	CSO, Census of Population 2006, Volume 2, Ages and Marital status
2.4	Ireland: Migration, 1996-2006	CSO, Demography- Annual Migration Estimates
2.5	Ireland: Principal economic status, 1997 and 2007	CSO, Quarterly National Household Survey
3. Employment		
3.1	Ireland and EU: Employment by economic sector, 2006	Eurostat data explorer - Population and social conditions theme - Table: Labour market\Employment and unemployment\LFS series detailed Quarterly survey results\Employment - LFS series
3.2	Ireland: Employment by marital status and usual hours worked, 2007	CSO, Quarterly National Household Survey
3.3	Ireland: Pension coverage of persons in employment, 2002 and 2005	CSO, Quarterly National Household Survey – Pensions Update, 2005
3.4	Ireland: Unemployment rates by age group, 1997 and 2007	CSO, Quarterly National Household Survey
3.5	Ireland: Unemployment rates and long-term unemployment rates, 1997-2007	CSO, Quarterly National Household Survey
3.6	Ireland and EU: Unemployment rates, 1997-2006	Eurostat data explorer - Population and social conditions theme - Table: Labour market\Employment and unemployment\LFS series – detailed annual survey results\Total unemployment - LFS series\Unemployment rates by sex, age groups and nationality
3.7	EU: Unemployment rates, 2006	CSO, Quarterly National Household Survey Eurostat data explorer - Population and social conditions theme - Table: Labour market\Employment and unemployment\LFS series – detailed annual survey results\Total unemployment - LFS series\Unemployment rates by sex, age groups and nationality
4. Social cohesion and lifestyles		
4.1	Ireland: At risk of poverty rate by most frequent economic activity, 2004 and 2006	CSO, EU Survey on Income and Living Conditions
4.2	Ireland: At risk of poverty rate by age, 2004 and 2006	CSO, EU Survey on Income and Living Conditions
4.3	Ireland: Lone parents, 1997-2007	CSO, Quarterly National Household Survey
4.4	Ireland: Lone parents by age of youngest child, 2007	CSO, Quarterly National Household Survey
4.5	Ireland: Recipients of one-parent family payment by age, 2006	Department of Social and Family Affairs
4.6	Ireland: Age of women at birth of first child, 1955-2006	CSO, Vital Statistics
4.7	EU: Age of women at birth of first child and total fertility rate, 2005	Eurostat data explorer - Population and social conditions theme - Table: Population\Demography\Demography - National data\Fertility\Fertility indicators
4.8	Ireland: Religion by age group, 2006	CSO, Vital Statistics
4.9	Ireland: Religion by nationality, 2006	CSO, Census of Population 2006, Volume 13, Religion

Domain and Indicator		Data source
4.10	Ireland: Grants to high performance athletes by age of athlete, 2001 and 2006	Irish Sports Council
4.11	Ireland: Grants to high performance athletes by size of grant, 2006	Irish Sports Council
4.12	Ireland: Arts Council grants to artists by artform, 2006	Arts Council
4.13	Ireland: Arts Council grants to artists by size of grant, 2006	Arts Council
5. Education		
5.1	Ireland: Leaving Certificate higher level candidates, 2007	State Examinations Commission
5.2	Ireland: Third level graduates by field of study, 2005	Department of Education and Science
5.3	Ireland: Students as proportion of population aged 18-24, 2002 and 2007	CSO, Quarterly National Household Survey
5.4	Ireland: Persons aged 25-34 with third level qualification, 2000-2007	CSO, Quarterly National Household Survey
5.5	Ireland: Persons aged 35-64 by highest level of education attained, 2007	CSO, Quarterly National Household Survey
5.6	Ireland: Classroom teachers, 1996-2006	Department of Education and Science
5.7	EU: Classroom teachers and academic staff, 2005	Eurostat data explorer - Population and social conditions theme - Table: Education and training\Education\ Enrolments, graduates, entrants, personnel and language learning – absolute numbers\Teachers (ISCED 0-4) and academic staff (ISCED 5-6) Department of Education and Science
5.8	EU: School management personnel, 2005	Eurostat data explorer - Population and social conditions theme - Table: Education and training\Education\ Education indicators – non-finance\Teaching staff Department of Education and Science
6. Health		
6.1	Ireland: Age-sex specific death rates, 2006	CSO, Vital Statistics
6.2	Ireland: Death rates for persons aged 65-74, 1996-2006	CSO, Vital Statistics
6.3	Ireland: Mortality by cause of death, 2006	CSO, Vital Statistics
6.4	Ireland: Persons aged 0-69 registered with the General Medical Services scheme, 2006	Health Service Executive CSO, Census of Population 2006, Volume 2, Ages and Marital status
6.5	Ireland: Acute hospital discharges by principal diagnosis, 2006	Hospital Inpatient Enquiry (HIPE), information Unit, Department of Health and Children
6.6	Ireland: Acute hospital discharges by patient type, 1996-2006	Hospital Inpatient Enquiry (HIPE), information Unit, Department of Health and Children
6.7	Ireland: Persons with an intellectual disability by level of disability, 2007	Health Research Board, Annual report of the National Intellectual Disability Database Committee, 2007
6.8	Ireland: Admissions to psychiatric hospitals and units, 2005	Activities of Irish Psychiatric Services, 2004
6.9	Ireland: Recipients of Carer's Allowance and Carer's Benefit, 1997-2006	Department of Social and Family Affairs, Statistical Information on Social Welfare Services
6.10	Ireland: Recipients of Carer's Allowance and Carer's Benefit by age, 2006	Department of Social and Family Affairs, Statistical Information on Social Welfare Services
6.11	Ireland: Labour force participation rate of carers by unpaid help provided, 2006	CSO, Census of Population 2006, Volume 11 - Disability and Carers
6.12	Ireland: Health service personnel by grade category, 2007	Service Personnel Census, Health Service Executive

Domain and Indicator		Data source
7.	Crime	
7.1	Ireland: Prisoners by offence group, 2005	Irish Prison Service Annual Report, 2005
7.2	Ireland: Criminal convictions, 2003-2006	CSO, Crime Statistics
7.3	EU: Criminal convictions, 2003	UNECE Gender Statistics Database http://w3.unece.org/stat/gender.asp
7.4	EU: Victims of selected crimes, 2003	UNECE Gender Statistics Database http://w3.unece.org/stat/gender.asp
7.5	Ireland: Homicides recorded by age of victim, 2006	CSO, Crime Statistics
8.	Transport	
8.1	Ireland: Means of travel to work, 1996 and 2006	CSO, Census of Population 2006, Volume 12 - Travel to Work, School and College
8.2	Ireland: Time taken to travel to work, 2006	CSO, Census of Population 2006, Volume 12 - Travel to Work, School and College
8.3	Ireland: Road fatalities by road user type, 2005	Road Safety Authority, Road Collision Facts, 2005
8.4	Ireland: Road fatalities, 1995-2005	Road Safety Authority, Road Collision Facts, 2005
8.5	Ireland: Road casualties by age of victim, 2005	Road Safety Authority, Road Collision Facts, 2005
8.6	Ireland: Current driving licences by age of holder, 2006	Driver Licensing Section, Department of the Environment, Heritage and Local Government, National Vehicle and Driver File

