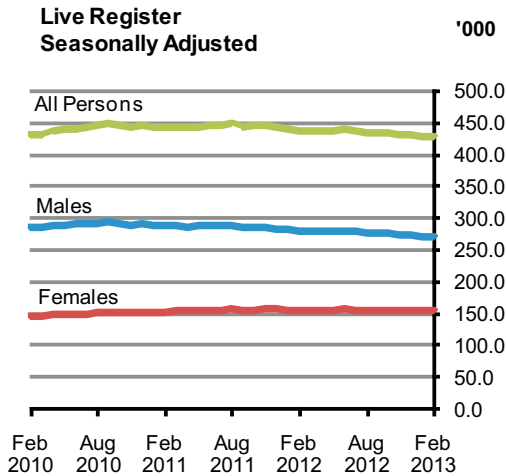




## Live Register February 2013



	Live Register Total	Seasonally Adjusted	Standardised Unemployment Rate (SUR)%
<b>February 2012</b>	439,422	438,800	15.0
<b>January 2013</b>	429,396	430,200	14.1
<b>February 2013</b>	428,876	428,800	14.1
			<b>Percentage Points</b>
<b>Change in month</b>	-	- 1,400	0.0
<b>Change in year</b>	- 10,546	-	- 0.9

### Seasonally adjusted Live Register stands at 428,800 in February

On a seasonally adjusted basis the Live Register total recorded a monthly decrease of 1,400 in February 2013, bringing the seasonally adjusted total to 428,800. *See table 2a.*

In unadjusted terms there were 428,876 people signing on the Live Register in February 2013. This represents an annual decrease of 10,546 (-2.4%). *See table 1a.*

The standardised unemployment rate (SUR) in February 2013 was 14.1%, unchanged from the revised January 2013 rate. The seasonally adjusted unemployment rate from the most recent Quarterly National Household Survey (QNHS) was 14.2% in the fourth quarter of 2012. *See table 3.*

Other features include:

- ◆ On a seasonally adjusted basis the Live Register showed a monthly decrease of 1,200 males in February 2013, and females decreased by 200 over the same period. *See table 2a.*
- ◆ The number of male claimants decreased by 10,595 (-3.7%) to 272,855 over the year and female claimants increased slightly by 49 to 156,021. This compares with a decrease of 8,356 (-2.9%) to 283,450 for males and an increase of 3,479 (+2.3%) to 155,972 for females in the year to February 2012. *See table 1a.*

**The Live Register is not designed to measure unemployment.** It includes part-time workers (those who work up to three days a week), seasonal and casual workers entitled to Jobseeker's Benefit or Allowance. Unemployment is measured by the Quarterly National Household Survey and the latest estimated number of persons unemployed as of the fourth quarter of 2012 was 294,600.

*For more information contact Sabrina Bowen at 021 453 5151, Karen Desmond at 021 453 5534 or Brendan Curtin at 021 453 5577.*

Published by the Central Statistics Office, Ireland.

Ardee Road  
Dublin 6  
Ireland

Skehard Road  
Cork  
Ireland

LoCall: 1890 313 414 (ROI)  
0870 876 0256 (UK/Nl)

Tel: +353 1 498 4000  
Fax: +353 1 498 4229

Tel: +353 21 453 5000  
Fax: +353 21 453 5492

Both offices may be contacted through any of these telephone numbers.

CSO on the Web: [www.cso.ie](http://www.cso.ie)  
and go to

Labour Market and Earnings: Labour Market

Director General: Pádraig Dalton

Enquiries:

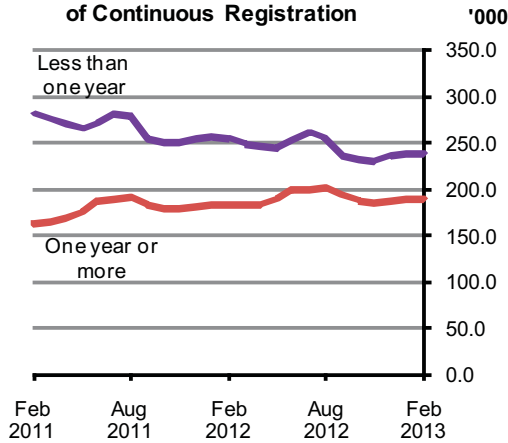
Live Register statistics  
General queries

Live Register Section, ext 5491  
Email [labour@cso.ie](mailto:labour@cso.ie)  
Information Section, ext 5021  
[information@cso.ie](mailto:information@cso.ie)

© Central Statistics Office  
The contents of this release may be quoted provided the source is given clearly and accurately. Reproduction for own or internal use is permitted.

On-line ISSN 2009-535X

### Live Register classified by Duration of Continuous Registration



### Live Register duration of continuous registration

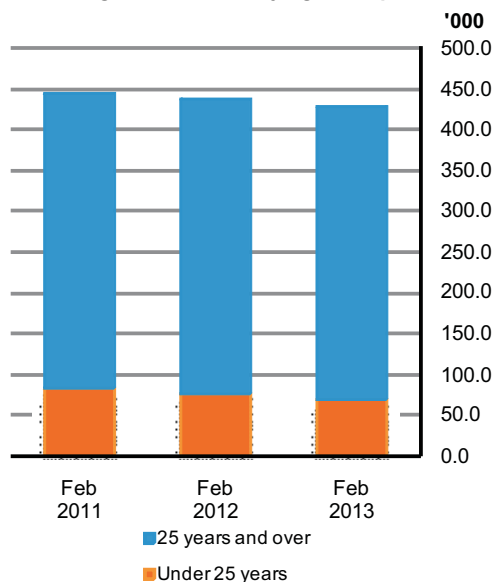
The number of long term claimants on the Live Register in February 2013 was 189,467. The number of male long term claimants increased by 171 (+0.1%) in the year to February 2013, while the comparable increase for females was 4,741 (+9.2%) giving an overall annual increase of 4,912 (+2.7%) in the number of long term claimants. *See table 7 and graph opposite.*

In February 55.8% (239,409) of all claimants on the Live Register were short term claimants. The comparable figure for February 2012 was 58.0% (254,867). The annual fall of 15,458 (-6.1%) in the number of short term claimants consisted of a decrease of 10,766 (-7.2%) in the number of male short term claimants and a decrease of 4,692 (-4.5%) in female short term claimants.

### Live Register casual and part-time workers

There were 89,780 casual and part-time workers on the Live Register in February, which represents 20.9% of the total Live Register. This compares with 20.1% one year earlier when there were 88,214 casual and part-time workers on the Live Register. In the year to February 2013 the number of casual and part-time workers increased by 1,566 (+1.8%), with the number of males increasing by 1,832 (+3.9%) and the number of females decreasing by 266 (-0.6%). *See table 8.*

### Live Register classified by Age Group



### Live Register age groups

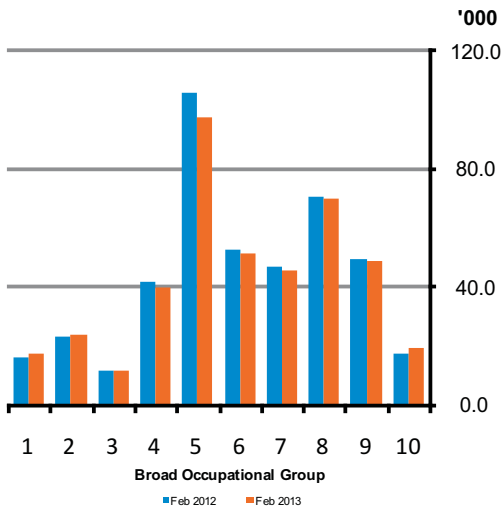
In the year to February 2013 the number of persons aged 25 and over on the Live Register decreased by 3,971 (-1.1%), and the number of persons aged under 25 decreased by 6,575 (-8.8%). Annual decreases in persons aged under 25 have occurred in all months since July 2010. The percentage of persons aged under 25 on the Live Register now stands at 15.9% for February 2013, down from 17.1% in February 2012 and 18.5% in February 2011. *See tables 1b and 1c and graph opposite.*

### Live Register new registrants

There were 33,086 new registrants on the Live Register in February 2013, consisting of 14,402 JB claims, 17,033 JA claims and 1,651 'Other Registrants'. Males accounted for 55.1% (18,230) and females 44.9% (14,856) of all new registrants. On average 4,557 male and 3,714 female new registrants joined the Live Register each week of the month. The difference between the number of new registrants on the Live Register and the change in the total number on the Live Register is accounted for by closed claims and movements between schemes. *See table 4.*

Data on Activation Programmes for January 2013 is included in the Annex of this release. Persons participating in Activation Programmes are not included in the Live Register count.

### Live Register classified by Last Held Occupation



#### KEY

- 1- Managers and administrators
- 2- Professional
- 3- Associate professional and technical
- 4- Clerical and secretarial
- 5- Craft and related
- 6- Personal and protective service
- 7- Sales
- 8- Plant and machine operatives
- 9- Other occupation
- 10- No occupation

### Live Register by other classifications

Bearing in mind the overall annual decrease of 2.4% in the number of people on the Live Register in February the main other points which can be noted include:

- ◆ An annual increase of 1.5% brought the total number of Jobseeker's Allowance (JA) claimants to 309,155 in February 2013, while Jobseeker's Benefit (JB) claimants decreased to 85,804 (-16.9%) over the same period. As a result JA claimants account for 72.1% of all persons on the Live Register in February 2013 compared with 69.3% a year earlier. *See table 1a.*
- ◆ Annual decreases occurred in seven of the eight NUTS 3 regions with the largest percentage decrease in the Mid-West region (-4.7%). The only percentage increase occurred in the Midland region (+0.1%). *See table 5.*
- ◆ *Craft and related* (22.7%) remained the largest occupational group on the Live Register in February, despite the fact that the number in the group fell over the year by 8,701 (-8.2%) to 97,533. The second largest annual percentage decrease was in the *Clerical and secretarial* group (-4.1%). *See table 6 and graph opposite.*
- ◆ In February Irish nationals accounted for 82.1% (352,047) of the number of persons on the Live Register. Of the 76,829 non-Irish nationals, the largest constituent group on the Live Register was nationals from the EU15 to EU27 States (42,561), followed by the UK (16,799). *See table 9.*
- ◆ A further compositional analysis of the Live Register is now available. *See table 10.*

<sup>1</sup> While the 'No Occupation' group is excluded from the analysis its subtotals are included in the relevant calculations presented in the text.



**Table 1a Total persons on the Live Register**

Category	February 2012	January 2013	February 2013	Monthly change	Annual change
<b>Males</b>					
JB Claims	55,317	46,110	45,486	- 624	- 9,831
JA Applications	216,743	215,478	215,282	- 196	- 1,461
Other Registrants	11,390	12,039	12,087	+ 48	+ 697
<b>Total</b>	<b>283,450</b>	<b>273,627</b>	<b>272,855</b>	<b>- 772</b>	<b>- 10,595</b>
<b>Females</b>					
JB Claims	47,937	40,618	40,318	- 300	- 7,619
JA Applications	87,940	93,368	93,873	+ 505	+ 5,933
Other Registrants	20,095	21,783	21,830	+ 47	+ 1,735
<b>Total</b>	<b>155,972</b>	<b>155,769</b>	<b>156,021</b>	<b>+ 252</b>	<b>+ 49</b>
<b>All Persons</b>					
JB Claims	103,254	86,728	85,804	- 924	- 17,450
JA Applications	304,683	308,846	309,155	+ 309	+ 4,472
Other Registrants	31,485	33,822	33,917	+ 95	+ 2,432
<b>Total</b>	<b>439,422</b>	<b>429,396</b>	<b>428,876</b>	<b>- 520</b>	<b>- 10,546</b>

**Table 1b Persons under 25 years of age on the Live Register**

Category	February 2012	January 2013	February 2013	Monthly change	Annual change
<b>Males</b>					
JB Claims	4,399	3,103	3,092	- 11	- 1,307
JA Applications	41,702	38,273	38,181	- 92	- 3,521
Other Registrants	110	88	98	+ 10	- 12
<b>Total</b>	<b>46,211</b>	<b>41,464</b>	<b>41,371</b>	<b>- 93</b>	<b>- 4,840</b>
<b>Females</b>					
JB Claims	4,051	2,875	2,886	+ 11	- 1,165
JA Applications	24,436	23,798	23,875	+ 77	- 561
Other Registrants	238	227	229	+ 2	- 9
<b>Total</b>	<b>28,725</b>	<b>26,900</b>	<b>26,990</b>	<b>+ 90</b>	<b>- 1,735</b>
<b>All Persons</b>					
JB Claims	8,450	5,978	5,978	0	- 2,472
JA Applications	66,138	62,071	62,056	- 15	- 4,082
Other Registrants	348	315	327	+ 12	- 21
<b>Total</b>	<b>74,936</b>	<b>68,364</b>	<b>68,361</b>	<b>- 3</b>	<b>- 6,575</b>

**Table 1c Persons 25 years of age and over on the Live Register**

Category	February 2012	January 2013	February 2013	Monthly change	Annual change
<b>Males</b>					
JB Claims	50,918	43,007	42,394	- 613	- 8,524
JA Applications	175,041	177,205	177,101	- 104	+ 2,060
Other Registrants	11,280	11,951	11,989	+ 38	+ 709
<b>Total</b>	<b>237,239</b>	<b>232,163</b>	<b>231,484</b>	<b>- 679</b>	<b>- 5,755</b>
<b>Females</b>					
JB Claims	43,886	37,743	37,432	- 311	- 6,454
JA Applications	63,504	69,570	69,998	+ 428	+ 6,494
Other Registrants	19,857	21,556	21,601	+ 45	+ 1,744
<b>Total</b>	<b>127,247</b>	<b>128,869</b>	<b>129,031</b>	<b>+ 162</b>	<b>+ 1,784</b>
<b>All Persons</b>					
JB Claims	94,804	80,750	79,826	- 924	- 14,978
JA Applications	238,545	246,775	247,099	+ 324	+ 8,554
Other Registrants	31,137	33,507	33,590	+ 83	+ 2,453
<b>Total</b>	<b>364,486</b>	<b>361,032</b>	<b>360,515</b>	<b>- 517</b>	<b>- 3,971</b>

**Table 2a Total persons on the Live Register - Unadjusted and Seasonally Adjusted**

	Month	Unadjusted Series			Seasonally Adjusted Series <sup>1</sup>		
		Males	Females	All Persons	Males	Females	All Persons
2011	February	291,800	152,500	444,300	287,900	154,300	442,200
	March	290,200	151,000	441,200	288,800	155,400	444,200
	April	286,700	152,800	439,600	286,900	155,700	442,500
	May	288,300	152,700	440,900	288,900	155,900	444,800
	June	296,100	161,800	457,900	289,600	156,200	445,800
	July	297,800	172,500	470,300	289,400	157,600	447,000
	August	296,900	172,900	469,700	289,000	160,000	449,100
	September	282,000	155,500	437,400	286,800	156,800	443,600
	October	277,600	152,800	430,400	286,900	158,300	445,100
	November	276,500	153,000	429,600	286,000	159,800	445,800
	December	279,700	155,100	434,800	283,300	159,300	442,600
	2012	January	283,900	155,700	439,600	281,800	158,300
February		283,500	156,000	439,400	280,900	157,900	438,800
March		280,200	153,800	434,100	279,100	157,200	436,300
April		277,400	152,600	430,000	279,500	157,000	436,500
May		278,800	154,100	432,900	279,600	157,500	437,100
June		286,700	165,300	452,000	280,100	159,600	439,600
July		287,800	172,500	460,300	279,300	157,700	437,000
August		286,600	169,600	456,300	278,500	157,100	435,600
September		273,800	155,500	429,300	278,000	157,100	435,000
October		268,500	151,600	420,200	276,800	157,000	433,900
November		266,400	150,900	417,300	275,100	157,300	432,400
December		269,900	153,800	423,700	273,400	157,700	431,100
2013	January	273,600	155,800	429,400	272,000	158,200	430,200
	February	272,900	156,000	428,900	270,800	158,000	428,800

<sup>1</sup> Table contains revised figures.**Table 2b Persons under 25 years of age on the Live Register - Unadjusted and Seasonally Adjusted**

	Month	Unadjusted Series			Seasonally Adjusted Series <sup>1</sup>		
		Males	Females	All Persons	Males	Females	All Persons
2011	February	51,900	30,200	82,100	52,000	31,200	83,200
	March	51,500	29,800	81,400	51,700	31,500	83,200
	April	49,900	29,500	79,400	51,500	31,400	82,800
	May	50,400	30,500	81,000	51,200	31,400	82,600
	June	53,300	33,700	87,000	50,900	31,200	82,000
	July	53,900	35,400	89,300	50,500	31,200	81,700
	August	53,300	35,500	88,800	49,900	31,200	81,100
	September	49,200	31,700	80,900	49,000	30,900	79,900
	October	47,400	30,300	77,700	49,100	31,100	80,100
	November	46,200	29,400	75,600	48,600	31,300	80,000
	December	45,900	28,500	74,300	47,500	30,600	78,100
	2012	January	46,500	28,800	75,300	47,100	30,100
February		46,200	28,700	74,900	46,500	29,800	76,300
March		45,200	27,800	73,000	45,600	29,300	74,800
April		43,900	27,000	70,900	45,500	29,100	74,600
May		44,500	28,200	72,600	45,200	29,000	74,300
June		47,600	31,500	79,100	45,300	29,100	74,400
July		48,100	32,600	80,700	44,900	28,800	73,600
August		47,900	32,500	80,400	44,600	28,600	73,200
September		44,400	29,300	73,700	44,200	28,500	72,600
October		42,200	27,700	69,900	43,600	28,300	71,900
November		40,700	26,500	67,200	42,900	28,200	71,000
December		40,800	26,200	66,900	42,300	28,100	70,400
2013	January	41,500	26,900	68,400	42,000	28,100	70,100
	February	41,400	27,000	68,400	41,700	28,000	69,800

<sup>1</sup> Table contains revised figures.

**Table 2c Persons 25 years of age and over on the Live Register - Unadjusted and Seasonally Adjusted**

	Month	Unadjusted Series			Seasonally Adjusted Series <sup>1</sup>		
		Males	Females	All Persons	Males	Females	All Persons
2011	February	240,000	122,300	362,200	236,000	123,000	359,000
	March	238,700	121,100	359,800	237,200	123,900	361,000
	April	236,800	123,400	360,200	235,400	124,300	359,700
	May	237,900	122,100	360,000	237,700	124,400	362,100
	June	242,800	128,100	370,900	238,700	125,100	363,800
	July	243,800	137,100	381,000	238,900	126,400	365,200
	August	243,600	137,400	380,900	239,100	128,900	368,000
	September	232,800	123,700	356,600	237,800	125,900	363,700
	October	230,200	122,500	352,700	237,800	127,200	365,000
	November	230,300	123,700	354,000	237,400	128,500	365,900
	December	233,800	126,600	360,400	235,900	128,700	364,600
	2012	January	237,400	126,900	364,200	234,800	128,200
February		237,200	127,200	364,500	234,400	128,100	362,500
March		235,100	126,000	361,100	233,500	127,900	361,500
April		233,500	125,600	359,100	234,000	127,900	361,900
May		234,300	126,000	360,300	234,300	128,500	362,800
June		239,100	133,800	372,900	234,800	130,500	365,300
July		239,700	139,900	379,600	234,400	128,900	363,300
August		238,800	137,100	375,900	233,900	128,500	362,400
September		229,400	126,300	355,600	233,800	128,600	362,400
October		226,300	123,900	350,300	233,200	128,700	362,000
November		225,700	124,500	350,100	232,300	129,100	361,300
December		229,100	127,700	356,800	231,100	129,600	360,700
2013	January	232,200	128,900	361,000	230,000	130,100	360,100
	February	231,500	129,000	360,500	229,100	130,000	359,100

<sup>1</sup> Table contains revised figures.

**Table 3 Seasonally Adjusted Standardised Unemployment Rates (SUR)<sup>1</sup>**

Month	2008	2009	2010	2011	2012	2013
	%	%	%	%	%	%
January	4.9	9.5	13.1	14.5	15.0	14.1
February <sup>2</sup>	5.0	10.2	13.0	14.3	15.0	14.1
March	5.3	10.9	13.2	14.4	14.9	
April	5.4	11.5	13.5	14.4	14.9	
May <sup>2</sup>	5.7	12.1	13.8	14.5	14.9	
June	6.0	12.3	13.7	14.5	14.9	
July	6.5	12.5	13.8	14.7	14.8	
August <sup>2</sup>	6.9	12.6	13.9	14.8	14.6	
September	7.2	12.9	14.3	14.7	14.5	
October	7.7	13.0	14.5	14.8	14.3	
November <sup>2</sup>	8.1	13.0	14.7	14.9	14.2 <sup>3</sup>	
December	8.6	13.0	14.7	14.9	14.1	
Annual average	6.4	12.0	13.8	14.6	14.7	

<sup>1</sup> Table contains revised figures. See Background Notes.

<sup>2</sup> Benchmark Quarterly National Household Survey (QNHS) calendar quarter estimates.

<sup>3</sup> The latest QNHS estimate of the unemployment rate (adjusted for seasonality) is: Oct - Dec 2012, 14.2%.

**Table 4 Summary of flows<sup>1</sup> on and off the Live Register**

		Number of Weeks	Males				Females			
			Live Register	New Regis- trations	Outflow (derived)	Average Weekly Change	Live Register	New Regis- trations	Outflow (derived)	Average Weekly Change
<b>JB Claims</b>										
2012	February	4	55,317	8,814	9,461	- 162	47,937	8,136	8,568	- 108
	March	5	53,266	9,215	11,266	- 410	45,706	7,103	9,334	- 446
	April	4	51,678	7,471	9,059	- 397	44,534	9,252	10,424	- 293
	May	4	50,379	6,629	7,928	- 325	43,610	5,858	6,782	- 231
	June	5	49,815	8,362	8,926	- 113	46,974	10,633	7,269	+ 673
	July	4	49,072	7,158	7,901	- 186	50,963	10,745	6,756	+ 997
	August	5	47,230	7,278	9,120	- 368	46,824	6,837	10,976	- 828
	September	4	44,251	6,226	9,205	- 745	39,412	5,752	13,164	- 1,853
	October	4	43,519	7,258	7,990	- 183	38,099	5,850	7,163	- 328
	November	5	43,211	9,493	9,801	- 62	38,109	10,073	10,063	+ 2
	December	4	44,433	6,217	4,995	+ 306	40,158	6,156	4,107	+ 512
2013	January	4	46,110	9,459	7,782	+ 419	40,618	9,322	8,862	+ 115
	February	4	45,486	7,081	7,705	- 156	40,318	7,321	7,621	- 75
<b>JA Applications</b>										
2012	February	4	216,743	11,044	11,007	+ 9	87,940	6,345	5,899	+ 112
	March	5	215,295	12,102	13,550	- 290	87,559	6,694	7,075	- 76
	April	4	213,894	9,275	10,676	- 350	87,270	5,333	5,622	- 72
	May	4	216,412	10,185	7,667	+ 630	89,579	6,427	4,118	+ 577
	June	5	224,793	15,411	7,030	+ 1,676	96,660	10,843	3,762	+ 1,416
	July	4	226,574	11,278	9,497	+ 445	99,428	8,174	5,406	+ 692
	August	5	227,251	12,667	11,990	+ 135	100,535	8,008	6,901	+ 221
	September	4	217,633	11,798	21,416	- 2,405	94,578	7,474	13,431	- 1,489
	October	4	213,313	11,666	15,986	- 1,080	92,280	7,001	9,299	- 575
	November	5	211,367	13,524	15,470	- 389	91,463	8,166	8,983	- 163
	December	4	213,554	8,456	6,269	+ 547	92,080	4,734	4,117	+ 154
2013	January	4	215,478	10,433	8,509	+ 481	93,368	6,378	5,090	+ 322
	February	4	215,282	10,563	10,759	- 49	93,873	6,470	5,965	+ 126
<b>Other Registrants</b>										
2012	February	4	11,390	595	428	+ 42	20,095	1,168	906	+ 66
	March	5	11,682	825	533	+ 58	20,546	1,295	844	+ 90
	April	4	11,836	569	415	+ 39	20,789	1,183	940	+ 61
	May	4	11,972	500	364	+ 34	20,955	806	640	+ 42
	June	5	12,103	651	520	+ 26	21,629	1,509	835	+ 135
	July	4	12,144	565	524	+ 10	22,142	1,707	1,194	+ 128
	August	5	12,144	546	546	0	22,272	1,370	1,240	+ 26
	September	4	11,905	493	732	- 60	21,556	976	1,692	- 179
	October	4	11,713	557	749	- 48	21,248	937	1,245	- 77
	November	5	11,792	733	654	+ 16	21,335	1,403	1,316	+ 17
	December	4	11,899	467	360	+ 27	21,609	799	525	+ 69
2013	January	4	12,039	687	547	+ 35	21,783	1,237	1,063	+ 44
	February	4	12,087	586	538	+ 12	21,830	1,065	1,018	+ 12

<sup>1</sup> Flow analysis: inflows and outflows published in this table do not take account of inter-scheme activity within the Live Register. For example, if a claimant exhausts his/her entitlement to JB and opens a new JA claim this is counted as an outflow in JB and an inflow in JA.



**Table 5 Persons on the Live Register classified by region**

NUTS2 and NUTS3 Regions <sup>1</sup>	February 2012	January 2013	February 2013	Monthly change	Annual change	Under 25 years	25 years & over
<b>Males</b>							
<b>Border, Midland and Western</b>	<b>86,259</b>	<b>83,842</b>	<b>83,680</b>	- 162	- 2,579	<b>13,253</b>	<b>70,427</b>
Border	39,598	38,214	38,280	+ 66	- 1,318	6,328	31,952
Midland	21,573	21,327	21,137	- 190	- 436	3,324	17,813
West	25,088	24,301	24,263	- 38	- 825	3,601	20,662
<b>Southern and Eastern</b>	<b>197,191</b>	<b>189,785</b>	<b>189,175</b>	- 610	- 8,016	<b>28,118</b>	<b>161,057</b>
Dublin	69,078	66,940	67,020	+ 80	- 2,058	10,370	56,650
Mid-East	27,210	26,013	26,062	+ 49	- 1,148	3,831	22,231
Mid-West	24,338	23,140	23,016	- 124	- 1,322	3,465	19,551
South-East	37,397	36,275	36,069	- 206	- 1,328	5,637	30,432
South-West	39,168	37,417	37,008	- 409	- 2,160	4,815	32,193
<b>Total</b>	<b>283,450</b>	<b>273,627</b>	<b>272,855</b>	- 772	- 10,595	<b>41,371</b>	<b>231,484</b>
<b>Females</b>							
<b>Border, Midland and Western</b>	<b>49,084</b>	<b>49,481</b>	<b>49,612</b>	+ 131	+ 528	<b>8,885</b>	<b>40,727</b>
Border	22,274	22,154	22,128	- 26	- 146	4,019	18,109
Midland	11,894	12,312	12,357	+ 45	+ 463	2,442	9,915
West	14,916	15,015	15,127	+ 112	+ 211	2,424	12,703
<b>Southern and Eastern</b>	<b>106,888</b>	<b>106,288</b>	<b>106,409</b>	+ 121	- 479	<b>18,105</b>	<b>88,304</b>
Dublin	35,429	35,301	35,571	+ 270	+ 142	6,228	29,343
Mid-East	15,189	15,306	15,453	+ 147	+ 264	2,494	12,959
Mid-West	14,064	13,642	13,573	- 69	- 491	2,353	11,220
South-East	20,197	20,278	20,185	- 93	- 12	3,734	16,451
South-West	22,009	21,761	21,627	- 134	- 382	3,296	18,331
<b>Total</b>	<b>155,972</b>	<b>155,769</b>	<b>156,021</b>	+ 252	+ 49	<b>26,990</b>	<b>129,031</b>
<b>All Persons</b>							
<b>Border, Midland and Western</b>	<b>135,343</b>	<b>133,323</b>	<b>133,292</b>	- 31	- 2,051	<b>22,138</b>	<b>111,154</b>
Border	61,872	60,368	60,408	+ 40	- 1,464	10,347	50,061
Midland	33,467	33,639	33,494	- 145	+ 27	5,766	27,728
West	40,004	39,316	39,390	+ 74	- 614	6,025	33,365
<b>Southern and Eastern</b>	<b>304,079</b>	<b>296,073</b>	<b>295,584</b>	- 489	- 8,495	<b>46,223</b>	<b>249,361</b>
Dublin	104,507	102,241	102,591	+ 350	- 1,916	16,598	85,993
Mid-East	42,399	41,319	41,515	+ 196	- 884	6,325	35,190
Mid-West	38,402	36,782	36,589	- 193	- 1,813	5,818	30,771
South-East	57,594	56,553	56,254	- 299	- 1,340	9,371	46,883
South-West	61,177	59,178	58,635	- 543	- 2,542	8,111	50,524
<b>Total</b>	<b>439,422</b>	<b>429,396</b>	<b>428,876</b>	- 520	- 10,546	<b>68,361</b>	<b>360,515</b>

<sup>1</sup> The composition of the regions is described in the Background Notes.

**Table 6 Persons on the Live Register classified by last held occupation**

Broad occupational group	February 2012	January 2013	February 2013	Monthly change	Annual change	Under 25 years	25 years & over
<b>Males</b>							
Managers and administrators	10,118	10,344	10,273	- 71	+ 155	405	9,868
Professional	11,443	11,394	11,195	- 199	- 248	960	10,235
Associate professional and technical	7,049	7,014	6,967	- 47	- 82	875	6,092
Clerical and secretarial	11,513	11,239	11,198	- 41	- 315	1,478	9,720
Craft and related	98,687	90,402	89,919	- 483	- 8,768	9,141	80,778
Personal and protective service	19,069	18,711	18,733	+ 22	- 336	2,796	15,937
Sales	18,064	17,799	18,098	+ 299	+ 34	5,407	12,691
Plant and machine operatives	55,705	54,526	54,559	+ 33	- 1,146	7,024	47,535
Other occupation	40,259	39,452	39,173	- 279	- 1,086	7,547	31,626
No occupation <sup>1</sup>	11,543	12,746	12,740	- 6	+ 1,197	5,738	7,002
<b>Total</b>	<b>283,450</b>	<b>273,627</b>	<b>272,855</b>	<b>- 772</b>	<b>- 10,595</b>	<b>41,371</b>	<b>231,484</b>
<b>Females</b>							
Managers and administrators	6,793	7,324	7,391	+ 67	+ 598	211	7,180
Professional	12,252	13,059	12,856	- 203	+ 604	954	11,902
Associate professional and technical	5,198	5,312	5,260	- 52	+ 62	498	4,762
Clerical and secretarial	30,442	29,318	29,019	- 299	- 1,423	1,887	27,132
Craft and related	7,547	7,530	7,614	+ 84	+ 67	1,138	6,476
Personal and protective service	33,653	33,078	33,176	+ 98	- 477	6,442	26,734
Sales	28,908	27,729	28,032	+ 303	- 876	6,941	21,091
Plant and machine operatives	15,330	15,448	15,659	+ 211	+ 329	2,512	13,147
Other occupation	9,439	9,659	9,669	+ 10	+ 230	2,830	6,839
No occupation <sup>1</sup>	6,410	7,312	7,345	+ 33	+ 935	3,577	3,768
<b>Total</b>	<b>155,972</b>	<b>155,769</b>	<b>156,021</b>	<b>+ 252</b>	<b>+ 49</b>	<b>26,990</b>	<b>129,031</b>
<b>All Persons</b>							
Managers and administrators	16,911	17,668	17,664	- 4	+ 753	616	17,048
Professional	23,695	24,453	24,051	- 402	+ 356	1,914	22,137
Associate professional and technical	12,247	12,326	12,227	- 99	- 20	1,373	10,854
Clerical and secretarial	41,955	40,557	40,217	- 340	- 1,738	3,365	36,852
Craft and related	106,234	97,932	97,533	- 399	- 8,701	10,279	87,254
Personal and protective service	52,722	51,789	51,909	+ 120	- 813	9,238	42,671
Sales	46,972	45,528	46,130	+ 602	- 842	12,348	33,782
Plant and machine operatives	71,035	69,974	70,218	+ 244	- 817	9,536	60,682
Other occupation	49,698	49,111	48,842	- 269	- 856	10,377	38,465
No occupation <sup>1</sup>	17,953	20,058	20,085	+ 27	+ 2,132	9,315	10,770
<b>Total</b>	<b>439,422</b>	<b>429,396</b>	<b>428,876</b>	<b>- 520</b>	<b>- 10,546</b>	<b>68,361</b>	<b>360,515</b>

<sup>1</sup> Includes those who never worked and those who have no stated occupation.

**Table 7 Persons on the Live Register classified by duration of continuous registration**

Duration	February 2012	January 2013	February 2013	Monthly change	Annual change	Under 25 years	25 years & over
<b>Males</b>							
Less than one year	150,247	139,805	139,481	- 324	- 10,766	25,671	113,810
One year or more	133,203	133,822	133,374	- 448	+ 171	15,700	117,674
<b>Total</b>	<b>283,450</b>	<b>273,627</b>	<b>272,855</b>	<b>- 772</b>	<b>- 10,595</b>	<b>41,371</b>	<b>231,484</b>
<b>Females</b>							
Less than one year	104,620	99,734	99,928	+ 194	- 4,692	18,895	81,033
One year or more	51,352	56,035	56,093	+ 58	+ 4,741	8,095	47,998
<b>Total</b>	<b>155,972</b>	<b>155,769</b>	<b>156,021</b>	<b>+ 252</b>	<b>+ 49</b>	<b>26,990</b>	<b>129,031</b>
<b>All Persons</b>							
Less than one year	254,867	239,539	239,409	- 130	- 15,458	44,566	194,843
One year or more	184,555	189,857	189,467	- 390	+ 4,912	23,795	165,672
<b>Total</b>	<b>439,422</b>	<b>429,396</b>	<b>428,876</b>	<b>- 520</b>	<b>- 10,546</b>	<b>68,361</b>	<b>360,515</b>

**Table 8 Casual and part-time workers on the Live Register**

		Males	Monthly change	Females	Monthly change	All Persons	Monthly change
2011	February	45,086	+ 969	39,973	+ 858	85,059	+ 1,827
	March	45,603	+ 517	40,552	+ 579	86,155	+ 1,096
	April	45,447	- 156	40,147	- 405	85,594	- 561
	May	45,071	- 376	39,862	- 285	84,933	- 661
	June	45,609	+ 538	40,156	+ 294	85,765	+ 832
	July	45,639	+ 30	40,226	+ 70	85,865	+ 100
	August	45,312	- 327	39,984	- 242	85,296	- 569
	September	44,731	- 581	39,286	- 698	84,017	- 1,279
	October	45,234	+ 503	39,795	+ 509	85,029	+ 1,012
	November	45,914	+ 680	40,698	+ 903	86,612	+ 1,583
	December	46,044	+ 130	40,771	+ 73	86,815	+ 203
	2012	January	46,256	+ 212	40,773	+ 2	87,029
February		47,038	+ 782	41,176	+ 403	88,214	+ 1,185
March		47,539	+ 501	41,177	+ 1	88,716	+ 502
April		47,614	+ 75	40,828	- 349	88,442	- 274
May		47,626	+ 12	40,438	- 390	88,064	- 378
June		47,891	+ 265	40,574	+ 136	88,465	+ 401
July		47,797	- 94	40,244	- 330	88,041	- 424
August		47,569	- 228	39,585	- 659	87,154	- 887
September		46,643	- 926	38,447	- 1,138	85,090	- 2,064
October		46,829	+ 186	38,834	+ 387	85,663	+ 573
November		47,695	+ 866	39,786	+ 952	87,481	+ 1,818
December		48,082	+ 387	39,987	+ 201	88,069	+ 588
2013	January	47,829	- 253	40,095	+ 108	87,924	- 145
	February	48,870	+ 1,041	40,910	+ 815	89,780	+ 1,856

**Table 9 Persons on the Live Register classified by nationality grouping**

		Nationality grouping						
		Non-Irish nationals						
		United Kingdom	EU15 excl. Irl. & UK	EU15 to EU27 States	Other	Non-Irish nationals	Irish nationals	All Persons
2011	February	18,065	3,813	44,167	13,117	79,162	365,137	444,299
	March	17,956	3,817	43,722	13,099	78,594	362,599	441,193
	April	18,021	3,729	42,698	13,075	77,523	362,048	439,571
	May	18,075	3,711	41,791	13,401	76,978	363,969	440,947
	June	18,648	3,829	42,013	14,431	78,921	379,027	457,948
	July	19,006	3,872	41,732	14,675	79,285	390,999	470,284
	August	18,925	3,847	41,330	14,893	78,995	390,718	469,713
	September	17,894	3,586	40,000	13,941	75,421	362,020	437,441
	October	17,708	3,545	40,202	13,582	75,037	355,395	430,432
	November	17,648	3,571	40,788	13,512	75,519	354,048	429,567
	December	17,798	3,605	41,263	13,554	76,220	358,564	434,784
	2012	January	17,827	3,648	42,831	13,845	78,151	361,438
February		17,783	3,685	43,341	13,946	78,755	360,667	439,422
March		17,521	3,608	43,025	13,926	78,080	355,974	434,054
April		17,337	3,558	42,268	13,852	77,015	352,986	430,001
May		17,447	3,551	41,634	14,151	76,783	356,124	432,907
June		18,054	3,770	41,360	15,072	78,256	373,718	451,974
July		18,290	3,756	41,167	15,209	78,422	381,901	460,323
August		18,143	3,700	40,629	15,277	77,749	378,507	456,256
September		17,135	3,525	39,335	14,324	74,319	355,016	429,335
October		16,767	3,477	39,347	13,906	73,497	346,675	420,172
November		16,695	3,530	39,935	13,588	73,748	343,529	417,277
December		16,806	3,575	40,491	13,667	74,539	349,194	423,733
2013	January	16,934	3,743	42,004	13,761	76,442	352,954	429,396
	February	16,799	3,853	42,561	13,616	76,829	352,047	428,876

**Table 10 Live Register Compositional Analysis**

	February 2010		February 2011		February 2012		February 2013	
	Number	% <i>of total</i>	Number	% <i>of total</i>	Number	% <i>of total</i>	Number	% <i>of total</i>
<b>Sex</b>								
Males	290,867	66.6	291,806	65.7	283,450	64.5	272,855	63.6
Females	146,089	33.4	152,493	34.3	155,972	35.5	156,021	36.4
<b>Total</b>	<b>436,956</b>	<b>100.0</b>	<b>444,299</b>	<b>100.0</b>	<b>439,422</b>	<b>100.0</b>	<b>428,876</b>	<b>100.0</b>
<b>Age</b>								
Under 25 years	85,120	19.5	82,067	18.5	74,936	17.1	68,361	15.9
25 years and over	351,836	80.5	362,232	81.5	364,486	82.9	360,515	84.1
<b>Total</b>	<b>436,956</b>	<b>100.0</b>	<b>444,299</b>	<b>100.0</b>	<b>439,422</b>	<b>100.0</b>	<b>428,876</b>	<b>100.0</b>
<b>Scheme</b>								
JB Claims	162,553	37.2	124,592	28.0	103,254	23.5	85,804	20.0
JA Applications	253,399	58.0	291,733	65.7	304,683	69.3	309,155	72.1
Other Registrants	21,004	4.8	27,974	6.3	31,485	7.2	33,917	7.9
<b>Total</b>	<b>436,956</b>	<b>100.0</b>	<b>444,299</b>	<b>100.0</b>	<b>439,422</b>	<b>100.0</b>	<b>428,876</b>	<b>100.0</b>
<b>Duration of Continuous Registration</b>								
Less than one year	329,211	75.3	280,474	63.1	254,867	58.0	239,409	55.8
One year or more	107,745	24.7	163,825	36.9	184,555	42.0	189,467	44.2
<b>Total</b>	<b>436,956</b>	<b>100.0</b>	<b>444,299</b>	<b>100.0</b>	<b>439,422</b>	<b>100.0</b>	<b>428,876</b>	<b>100.0</b>
<b>Nationality Grouping</b>								
Irish Nationals	355,690	81.4	365,137	82.2	360,667	82.1	352,047	82.1
Non-Irish Nationals	81,266	18.6	79,162	17.8	78,755	17.9	76,829	17.9
<b>Total</b>	<b>436,956</b>	<b>100.0</b>	<b>444,299</b>	<b>100.0</b>	<b>439,422</b>	<b>100.0</b>	<b>428,876</b>	<b>100.0</b>
<b>NUTS2 Regions<sup>1</sup></b>								
Border, Midland and Western	133,792	30.6	137,474	30.9	135,343	30.8	133,292	31.1
Southern and Eastern	303,164	69.4	306,825	69.1	304,079	69.2	295,584	68.9
<b>Total</b>	<b>436,956</b>	<b>100.0</b>	<b>444,299</b>	<b>100.0</b>	<b>439,422</b>	<b>100.0</b>	<b>428,876</b>	<b>100.0</b>
<b>Last Held Occupation</b>								
Managers and administrators	18,242	4.2	17,177	3.9	16,911	3.8	17,664	4.1
Professional	24,709	5.7	23,986	5.4	23,695	5.4	24,051	5.6
Associate professional and technical	12,997	3.0	12,917	2.9	12,247	2.8	12,227	2.9
Clerical and secretarial	43,574	10.0	42,653	9.6	41,955	9.5	40,217	9.4
Craft and related	119,006	27.2	114,915	25.9	106,234	24.2	97,533	22.7
Personal and protective service	47,837	10.9	51,627	11.6	52,722	12.0	51,909	12.1
Sales	42,531	9.7	45,223	10.2	46,972	10.7	46,130	10.8
Plant and machine operatives	70,447	16.1	70,898	16.0	71,035	16.2	70,218	16.4
Other occupation	45,506	10.4	49,798	11.2	49,698	11.3	48,842	11.4
No occupation <sup>2</sup>	12,107	2.8	15,105	3.4	17,953	4.1	20,085	4.7
<b>Total</b>	<b>436,956</b>	<b>100.0</b>	<b>444,299</b>	<b>100.0</b>	<b>439,422</b>	<b>100.0</b>	<b>428,876</b>	<b>100.0</b>
<b>Casual Status</b>								
No casual and part-time work	357,667	81.9	359,240	80.9	351,208	79.9	339,096	79.1
Casual and part-time work	79,289	18.1	85,059	19.1	88,214	20.1	89,780	20.9
<b>Total</b>	<b>436,956</b>	<b>100.0</b>	<b>444,299</b>	<b>100.0</b>	<b>439,422</b>	<b>100.0</b>	<b>428,876</b>	<b>100.0</b>

<sup>1</sup> The composition of the regions is described in the Background Notes.<sup>2</sup> Includes those who never worked and those who have no stated occupation.

## Annex - Activation Programmes

The table below contains the end of January 2013 data on the number of people availing of a range of programmes targeted primarily at the long-term unemployed (over 12 months) and other welfare recipients, including Lone Parents.

There were 83,332 people availing of these programmes in January 2013, which is an increase of 3,256 (+4.1%) from the previous year, when there were 80,076 people in activation programmes.

Persons on activation programmes are not counted as part of the monthly Live Register.

### Live Register Activation Programmes

	January 2012	December 2012	January 2013
<b>Back to Work Schemes</b>			
Back to Work allowance scheme - Employee strand <sup>1</sup>	162	18	14
Back to Work Enterprise allowance scheme -self employed strand	10,772	10,811	10,812
Short-term Enterprise Allowance <sup>2</sup>	1,201	1,066	1,002
<b>Total Back to Work payments</b>	<b>12,135</b>	<b>11,895</b>	<b>11,828</b>
<b>Other Activation Programmes</b>			
DSP Part-time Job Incentive	190	215	215
TUS - Community Work Placement Initiative (2011)	2,337	4,543	4,510
JobBridge (2011)	3,469	5,532	5,565
<b>Total Other Activation Programmes</b>	<b>5,996</b>	<b>10,290</b>	<b>10,290</b>
<b>Community Employment Schemes (excluding Supervisors)</b>			
	<b>22,298</b>	<b>21,081</b>	<b>21,063</b>
<b>FAS Full Time Training for Unemployed People<sup>3</sup></b>			
	<b>9,001</b>	<b>9,318</b>	<b>9,346</b>
<b>Back to Education Courses</b>			
Vocational Training Opportunities Scheme (VTOS) <sup>4</sup>	N/A	N/A	N/A
Back to Education Allowance (BTEA) <sup>5</sup>	25,646	25,886	25,805
<b>Total Back to Education Courses</b>	<b>30,646</b>	<b>30,886</b>	<b>30,805</b>
<b>Total Activation Programmes</b>	<b>80,076</b>	<b>83,470</b>	<b>83,332</b>

<sup>1</sup> This scheme was closed to new applications from 1st May 2009.

<sup>2</sup> This scheme was introduced from 1st May 2009. It provides immediate support for someone in receipt of Jobseekers Benefit who wants to start a business.

<sup>3</sup> Specific Skills Training/Local Training initiative/Traineeship/Return to Work. Breakdown became available for April 2012 Live Register release.

<sup>4</sup> VTOS figures are estimated at 5,000 each year.

<sup>5</sup> BTEA figures include all schemes but participants from JA & JB are not entitled to BTEA during the summer holidays.

## Background Notes

**Source and scope of the Live Register** The Live Register is compiled from returns made for each local office to the Central Statistics Office by the Department of Social Protection. It comprises of persons under 65 years of age in the following classes:

- ◆ All Claimants for Jobseekers Benefit (JB) excluding systematic short-time workers
- ◆ Applicants for Jobseekers Allowance (JA) excluding smallholders/farm assists and other self-employed persons
- ◆ Other registrants including applicants for credited Social Welfare contributions but excluding those directly involved in an industrial dispute.

**Reference Period** The reference periods for the Live Register results are as follows:  
February 2013 – 26th January 2013 to 22nd February 2013  
February 2012 – 28th January 2012 to 24th February 2012

**Unemployment statistics** The Live Register is not designed to measure unemployment. It includes part-time (those who work up to three days a week), seasonal and casual workers entitled to Jobseekers Allowance and or Jobseekers Benefit. **Unemployment is measured by the Quarterly National Household Survey** (formerly the Annual Labour Force Survey).

**Standardised unemployment rates** The Standardised Unemployment Rate (SUR) series in Table 3 is based on the estimated number of persons unemployed expressed as a percentage of the total economically active population (i.e. the Labour Force), using internationally comparable definitions of employment and unemployment, as recommended by the International Labour Office.

Official estimates of the number of persons unemployed and the unemployment rate are produced from the Quarterly National Household Survey (QNHS). The QNHS is the only source of information on unemployment and employment which can apply standard International Labour Organisation (ILO) methodology to the estimation of these key indicators. The background notes of the QNHS release contain more information on the ILO criteria. Given the timelag required to produce estimates from the QNHS and the quarterly periodicity, short-term trends in the Live Register are used to estimate more up-to-date monthly unemployment rates.

The seasonally adjusted QNHS estimate of unemployment is used as a benchmark for February (Quarter 1 QNHS), May (Quarter 2 QNHS), August (Quarter 3 QNHS) and November (Quarter 4 QNHS) each year. The latest QNHS benchmark is updated using the trend in the seasonally adjusted Live Register to allow the estimation of the SUR. Once new QNHS data is available it is used to revise the SUR series. The assumption underlying this methodology is that over short periods the change in the seasonally adjusted Live Register will represent accurately the change in unemployment which will be seen from the QNHS. This methodology has been used since the QNHS was first initiated at the end of 1997.

**QNHS** The Quarterly National Household Survey (QNHS), which began in September 1997, replaced the Labour Force Survey and provides quarterly estimates of the unemployment rate. Up to and including the fourth quarter of 2008 the QNHS operated on a seasonal quarter basis. As of the first quarter 2009 the QNHS is now undertaken on a calendar quarter basis.

The calendar reference quarters for survey results are:

Q1 - January to March, Q2 - April to June, Q3 - July to September and Q4 - October to December.

The calendar quarter estimates for Q4 2012 (adjusted for seasonality) are:

	Q1	Q2	Q3	Q4
	%	%	%	%
2007	4.5	4.7	4.6	4.9
2008	5.0	5.7	6.9	8.1
2009	10.2	12.1	12.6	13.0
2010	13.0	13.8	13.9	14.7
2011	14.3	14.5	14.8	14.9
2012	15.0	14.9	14.6	14.2

**Seasonal adjustment** Since January 2011 the seasonal adjustment of the Live Register is completed by applying the X-12-ARIMA model, developed by the U.S. Census Bureau. Seasonal adjustment is conducted using the indirect approach, where each individual series is independently adjusted (male under 25 years, female under 25 years, male 25 years and over and female 25 years and over). To preserve consistency between the individual and aggregate series, the series for gender, age group and total Live Register are then created from these four component series.

The X-12 ARIMA method has the X-11 moving averages process at its core, but builds on this by providing options for pre-treating the series using a regARIMA approach for prior adjustment and series extension. In essence this methodology will estimate seasonal factors while taking account of temporary changes, outliers, level shifts and calendar effects (e.g timing of Easter).

All Live Register series are updated monthly with the latest three years of seasonally adjusted data as part of the concurrent approach. The comprehensive annual review contains revisions to the entire series. Revisions to the series are typically very minor in scale.

For additional information on the use of X-12-ARIMA see detailed note in the January 2011 LiveRegister release.

**Jobseeker's Benefit Duration** Prior to 19 January 2004 Jobseeker's Benefit was payable for **15 months** (390 days).

From 19 January 2004, Jobseeker's Benefit could be paid for a maximum of 15 months (390 days) to people who had at least 260 paid PRSI contributions. Jobseeker's Benefit could be paid for a maximum of 12 months (312 days) to people who had less than 260 paid contributions (Refers to new claim).

Since 15 October 2008, Jobseeker's Benefit can be paid for a maximum of **12 months** (312 days) to people who have at least 260 paid PRSI contributions. Jobseeker's Benefit can be paid for a maximum of **9 months** (234 days) to people who have less than 260 paid contributions (Refers to new claims).

**Live Register Flows** Live Register flows data is sourced from information collected by the Department of Social Protection. The aggregate of new registrations for each month is used in conjunction with the net change over the same period to calculate the outflow from the register. A new registration is defined as anybody on the Live Register in a particular month who was not on it the previous month. Inflows and outflows published in this release do not take account of inter-scheme activity within the Live Register. For example, if a claimant exhausts his/her entitlement to JB and opens a new JA claim this is counted as an outflow in JB and an inflow in JA.

**Live Register Area Analysis** The basis of the area analysis in Live Register statistics is the Department of Social Protection local office of registration. The areas served by Local Employment Offices do not correspond to specific geographic boundaries. Therefore, registrants at a given local office do not necessarily come from a particular region or area which can be precisely delineated e.g. data for the Cork City Local Office of Registration refers to all persons signing on in Cork City but may include persons not resident in Cork City. **The latest available Live Register data by Province, County and Local Office of Registration will be released on the CSO website through the CSO Main Data Dissemination Service, StatBank one day after the publication of this release.**



**NUTS2 and NUTS3 regions** The Regional classifications are based on the NUTS (Nomenclature of Territorial Units) classification used by Eurostat. The NUTS3 regions correspond to the eight Regional Authorities established under the Local Government Act, 1991 (Regional Authorities) (Establishment) Order, 1993, which came into operation on 1 January 1994. The NUTS2 regions, which were proposed by Government and agreed by Eurostat in 1999, are groupings of the NUTS3 regions.

**Border, Midland and Western NUTS2 Region**

<b>Border</b>	Cavan Donegal Leitrim Louth Monaghan Sligo
<b>Midland</b>	Laois Longford Offaly Westmeath
<b>West</b>	Galway City Galway County Mayo Roscommon

**Southern and Eastern NUTS2 Region**

<b>Dublin</b>	Dublin City Dun Laoghaire-Rathdown Fingal South Dublin
<b>Mid-East</b>	Kildare Meath Wicklow
<b>Mid-West</b>	Clare Limerick City Limerick County North Tipperary
<b>South-East</b>	Carlow Kilkenny South Tipperary Waterford City Waterford County Wexford
<b>South-West</b>	Cork City Cork County Kerry

**Occupations** Live Register occupational data is sourced from information collected by the Department of Social Protection on the most recent occupation of claimants when they sign on the Live Register. The classification used is based on the UK Standard Occupational Classification (SOC). “No occupation” is an additional category and includes those who have never worked and those who have no stated occupation.

**Age by Duration Analysis** Detailed tables relating to regional and scheme data are available on the CSO website through the CSO Main Data Dissemination Service, StatBank on a bi-annual basis, at the following link:

<http://cso.ie/shorturl.aspx/142>

**Casual and part-time workers** The casual and part-time workers’ figure is based on data supplied by the Department of Social Protection. People may apply for Jobseeker's Benefit or Jobseeker's Allowance if they only work for part of a week and be included on the Live Register.

**Nationality** Data in the nationality grouping table is sourced from information collected by the Department of Social Protection on the nationality of claimants when they first sign on the Live Register.

**CSO StatBank** More detailed information on geographic breakdowns of the Live Register and duration of continuous registration along with all Live Register published data can be found on the CSO Main Data Dissemination Service, StatBank on the CSO website at the link:

<http://cso.ie/shorturl.aspx/39>

For further information or assistance use the contact details on the front page of the release or e-mail [labour@cso.ie](mailto:labour@cso.ie)