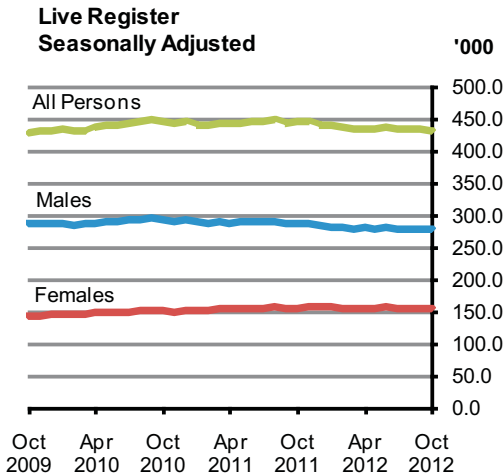




Live Register October 2012



	Live Register Total	Seasonally Adjusted	Standardised Unemployment Rate (SUR)%
October 2011	430,432	445,400	14.5
September 2012	429,335	435,200	14.8
October 2012	420,172	434,200	14.8
			Percentage Points
Change in month	-	- 1,000	0.0
Change in year	- 10,260	-	+0.3

Seasonally adjusted Live Register shows slight decrease in October

On a seasonally adjusted basis the Live Register total recorded a monthly decrease of 1,000 in October 2012, bringing the seasonally adjusted total to 434,200. *See table 2a.*

The standardised unemployment rate (SUR) in October 2012 was 14.8%, unchanged from the latest September 2012 rate. The seasonally adjusted unemployment rate from the most recent Quarterly National Household Survey (QNHS) was 14.8% in the second quarter of 2012. *See table 3.*

In unadjusted terms there were 420,172 people signing on the Live Register in October 2012. This represents an annual decrease of 10,260 (-2.4%). The trend in the overall Live Register continues to be one of movement within a small range. *See table 1a.*

Other features include:

- ◆ On a seasonally adjusted basis the Live Register showed a monthly decrease of 700 males in October 2012, while females decreased by 300 over the same period. *See table 2a.*
- ◆ The number of male claimants decreased by 9,050 (-3.3%) to 268,545 over the year and female claimants decreased by 1,210 (-0.8%) to 151,627. This compares with a decrease of 4,004 (-1.4%) to 277,595 for males and an increase of 4,883 (+3.3%), to 152,837 for females in the year to October 2011. *See table 1a.*

The Live Register is not designed to measure unemployment. It includes part-time workers (those who work up to three days a week), seasonal and casual workers entitled to Jobseeker's Benefit or Allowance. Unemployment is measured by the Quarterly National Household Survey and the latest estimated number of persons unemployed as of the second quarter of 2012 was 308,500.

Published by the Central Statistics Office, Ireland.

Ardee Road
Dublin 6
Ireland

Skehard Road
Cork
Ireland

LoCall: 1890 313 414 (ROI)
0870 876 0256 (UK/Nl)

Tel: +353 1 498 4000
Fax: +353 1 498 4229

Tel: +353 21 453 5000
Fax: +353 21 453 5492

Both offices may be contacted through any of these telephone numbers.

CSO on the Web: www.cso.ie
and go to
Labour Market and Earnings: Labour Market

Director General: Pádraig Dalton

Enquiries:

Live Register statistics
General queries

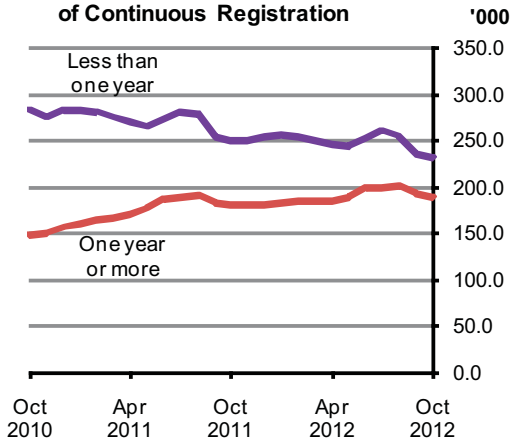
Live Register Section, ext 5491
Email labour@cso.ie
Information Section, ext 5021
information@cso.ie

© Central Statistics Office
The contents of this release may be quoted provided the source is given clearly and accurately. Reproduction for own or internal use is permitted.

On-line ISSN 2009-535X

For more information contact Sabrina Bowen at 021 453 5151, Karen Desmond at 021 453 5534 or Brendan Curtin at 021 453 5577.

Live Register classified by Duration of Continuous Registration



Live Register duration of continuous registration

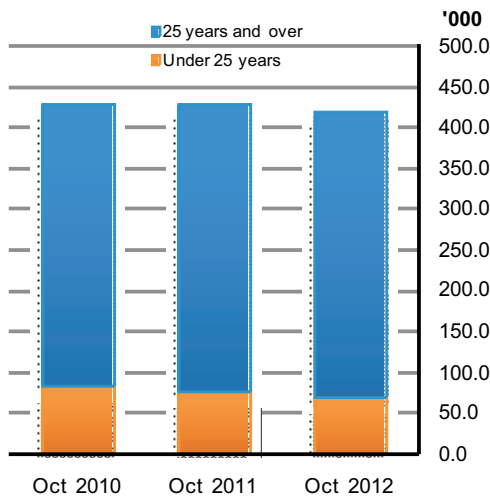
The number of long term claimants on the Live Register in October 2012 was 188,117. The number of male long term claimants increased by 2,657 (+2.0%) in the year to October 2012, while the comparable increase for females was 5,687 (+11.5%) giving an overall annual increase of 8,344 (+4.6%) in the number of long term claimants. *See table 7 and graph opposite.*

In October 55.2% (232,055) of all claimants on the Live Register were short term claimants. The comparable figure for October 2011 was 58.2% (250,659). The annual fall of 18,604 (-7.4%) in the number of short term claimants consisted of a decrease of 11,707 (-7.9%) in the number of male short term claimants and a decrease of 6,897 (-6.7%) in female short term claimants.

Live Register casual and part-time workers

There were 85,663 casual and part-time workers on the Live Register in October, which represents 20.4% of the total Live Register. This compares with 19.8% one year earlier when there were 85,029 casual and part-time workers on the Live Register. In the year to October 2012 the number of casual and part-time workers increased by 634 (+0.7%), with the number of males increasing by 1,595 (+3.5%) and the number of females decreasing by 961 (-2.4%). *See table 8.*

Live Register classified by Age Group



Live Register age groups

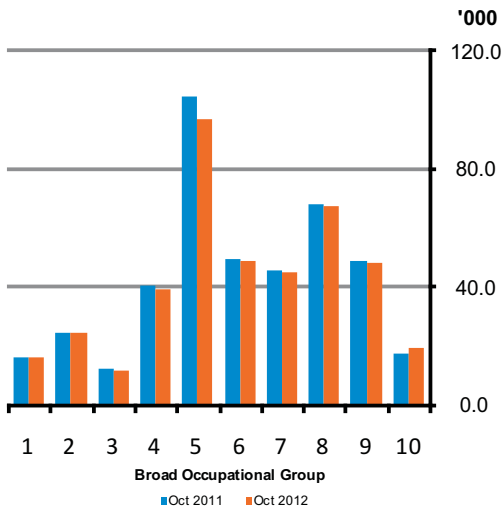
In the year to October 2012 the number of persons aged 25 and over on the Live Register decreased by 2,467 (-0.7%), and the number of persons aged under 25 decreased by 7,793 (-10.0%). Annual decreases in persons aged under 25 have occurred in all months since July 2010. The percentage of persons aged under 25 on the Live Register now stands at 16.6% for October 2012, down from 18.1% in October 2011 and 19.3% in October 2010. *See tables 1b and 1c and graph opposite.*

Live Register new registrants

There were 33,269 new registrants on the Live Register in October 2012, consisting of 13,108 JB claims, 18,667 JA claims and 1,494 'Other Registrants'. Males accounted for 58.6% (19,481) and females 41.4% (13,788) of all new registrants. On average 4,870 male and 3,447 female new registrants joined the Live Register each week of the month. The difference between the number of new registrants on the Live Register and the change in the total number on the Live Register is accounted for by closed claims and movements between schemes. *See table 4.*

Data on Activation Programmes for September 2012 is included in the Annex of this release. Persons participating in Activation Programmes are not included in the Live Register count.

Live Register classified by Last Held Occupation



KEY

- 1- Managers and administrators
- 2- Professional
- 3- Associate professional and technical
- 4- Clerical and secretarial
- 5- Craft and related
- 6- Personal and protective service
- 7- Sales
- 8- Plant and machine operatives
- 9- Other occupation
- 10- No occupation

Live Register by other classifications

Bearing in mind the overall annual decrease of 2.4% in the number of people on the Live Register in October the main other points which can be noted include:

- ◆ An annual increase of 1.4% brought the total number of Jobseeker's Allowance (JA) claimants to 305,593 in October 2012, while Jobseeker's Benefit (JB) claimants decreased to 81,618 (-17.6%) over the same period. As a result JA claimants account for 72.7% of all persons on the Live Register in October 2012 compared with 70.0% a year earlier. *See table 1a.*
- ◆ Annual decreases occurred in seven of the eight NUTS 3 regions with the largest percentage decrease in the Mid-West region (-4.1%). The only percentage increase occurred in the Midland region (+0.9%). *See table 5.*
- ◆ *Craft and related* (23.2%) remained the largest occupational group on the Live Register in October, despite the fact that the number in the group fell over the year by 7,502 (-7.2%) to 97,308. The second largest annual percentage decrease was in the *Clerical and secretarial* group (-3.6%) followed by *Associate professional and technical* group (-2.7%). *See table 6 and graph opposite.*
- ◆ In October Irish nationals accounted for 82.5% (346,675) of the number of persons on the Live Register. Of the 73,497 non-Irish nationals, the largest constituent group on the Live Register was nationals from the EU15 to EU27 States (39,347), followed by the UK (16,767). *See table 9.*

¹ While the 'No Occupation' group is excluded from the analysis its subtotals are included in the relevant calculations presented in the text.

Table 1a Total persons on the Live Register

Category	October 2011	September 2012	October 2012	Monthly change	Annual change
Males					
JB Claims	52,546	44,251	43,519	- 732	- 9,027
JA Applications	214,305	217,633	213,313	- 4,320	- 992
Other Registrants	10,744	11,905	11,713	- 192	+ 969
Total	277,595	273,789	268,545	- 5,244	- 9,050
Females					
JB Claims	46,467	39,412	38,099	- 1,313	- 8,368
JA Applications	87,028	94,578	92,280	- 2,298	+ 5,252
Other Registrants	19,342	21,556	21,248	- 308	+ 1,906
Total	152,837	155,546	151,627	- 3,919	- 1,210
All Persons					
JB Claims	99,013	83,663	81,618	- 2,045	- 17,395
JA Applications	301,333	312,211	305,593	- 6,618	+ 4,260
Other Registrants	30,086	33,461	32,961	- 500	+ 2,875
Total	430,432	429,335	420,172	- 9,163	- 10,260

Table 1b Persons under 25 years of age on the Live Register

Category	October 2011	September 2012	October 2012	Monthly change	Annual change
Males					
JB Claims	4,547	3,448	3,159	- 289	- 1,388
JA Applications	42,710	40,844	38,954	- 1,890	- 3,756
Other Registrants	113	117	99	- 18	- 14
Total	47,370	44,409	42,212	- 2,197	- 5,158
Females					
JB Claims	4,327	3,135	2,859	- 276	- 1,468
JA Applications	25,778	25,907	24,615	- 1,292	- 1,163
Other Registrants	234	247	230	- 17	- 4
Total	30,339	29,289	27,704	- 1,585	- 2,635
All Persons					
JB Claims	8,874	6,583	6,018	- 565	- 2,856
JA Applications	68,488	66,751	63,569	- 3,182	- 4,919
Other Registrants	347	364	329	- 35	- 18
Total	77,709	73,698	69,916	- 3,782	- 7,793

Table 1c Persons 25 years of age and over on the Live Register

Category	October 2011	September 2012	October 2012	Monthly change	Annual change
Males					
JB Claims	47,999	40,803	40,360	- 443	- 7,639
JA Applications	171,595	176,789	174,359	- 2,430	+ 2,764
Other Registrants	10,631	11,788	11,614	- 174	+ 983
Total	230,225	229,380	226,333	- 3,047	- 3,892
Females					
JB Claims	42,140	36,277	35,240	- 1,037	- 6,900
JA Applications	61,250	68,671	67,665	- 1,006	+ 6,415
Other Registrants	19,108	21,309	21,018	- 291	+ 1,910
Total	122,498	126,257	123,923	- 2,334	+ 1,425
All Persons					
JB Claims	90,139	77,080	75,600	- 1,480	- 14,539
JA Applications	232,845	245,460	242,024	- 3,436	+ 9,179
Other Registrants	29,739	33,097	32,632	- 465	+ 2,893
Total	352,723	355,637	350,256	- 5,381	- 2,467

Table 2a Total persons on the Live Register - Unadjusted and Seasonally Adjusted

	Month	Unadjusted Series			Seasonally Adjusted Series ¹		
		Males	Females	All Persons	Males	Females	All Persons
2010	October	281,600	148,000	429,600	293,000	153,000	446,000
	November	280,200	144,800	425,000	290,900	151,900	442,900
	December	288,800	148,300	437,100	292,500	153,000	445,500
2011	January	292,000	150,700	442,700	288,800	153,500	442,300
	February	291,800	152,500	444,300	287,700	154,400	442,100
	March	290,200	151,000	441,200	288,800	155,500	444,200
	April	286,700	152,800	439,600	286,900	155,800	442,700
	May	288,300	152,700	440,900	288,700	156,000	444,700
	June	296,100	161,800	457,900	289,400	156,300	445,800
	July	297,800	172,500	470,300	289,300	157,600	447,000
	August	296,900	172,900	469,700	289,200	160,000	449,200
	September	282,000	155,500	437,400	287,200	156,500	443,700
	October	277,600	152,800	430,400	287,600	157,700	445,400
	November	276,500	153,000	429,600	286,200	159,700	445,900
	December	279,700	155,100	434,800	283,100	159,400	442,500
2012	January	283,900	155,700	439,600	281,500	158,500	440,000
	February	283,500	156,000	439,400	280,500	158,000	438,500
	March	280,200	153,800	434,100	279,000	157,300	436,300
	April	277,400	152,600	430,000	279,400	157,100	436,500
	May	278,800	154,100	432,900	279,300	157,700	437,000
	June	286,700	165,300	452,000	279,900	159,700	439,600
	July	287,800	172,500	460,300	279,200	157,800	437,000
	August	286,600	169,600	456,300	278,600	157,000	435,600
	September	273,800	155,500	429,300	278,500	156,700	435,200
	October	268,500	151,600	420,200	277,800	156,400	434,200

¹ Table contains revised figures.**Table 2b Persons under 25 years of age on the Live Register - Unadjusted and Seasonally Adjusted**

	Month	Unadjusted Series			Seasonally Adjusted Series ¹		
		Males	Females	All Persons	Males	Females	All Persons
2010	October	52,000	30,900	82,900	54,400	31,800	86,300
	November	51,000	29,500	80,500	53,700	31,600	85,300
	December	52,100	29,200	81,300	53,600	31,500	85,100
2011	January	52,200	30,000	82,200	52,600	31,300	83,900
	February	51,900	30,200	82,100	51,900	31,300	83,200
	March	51,500	29,800	81,400	51,800	31,600	83,300
	April	49,900	29,500	79,400	51,500	31,400	82,800
	May	50,400	30,500	81,000	51,200	31,500	82,700
	June	53,300	33,700	87,000	50,900	31,200	82,100
	July	53,900	35,400	89,300	50,500	31,200	81,800
	August	53,300	35,500	88,800	50,000	31,200	81,200
	September	49,200	31,700	80,900	49,100	30,700	79,800
	October	47,400	30,300	77,700	49,300	31,100	80,400
	November	46,200	29,400	75,600	48,500	31,300	79,700
	December	45,900	28,500	74,300	47,300	30,600	77,900
2012	January	46,500	28,800	75,300	47,000	30,100	77,100
	February	46,200	28,700	74,900	46,500	29,800	76,300
	March	45,200	27,800	73,000	45,700	29,300	75,000
	April	43,900	27,000	70,900	45,400	29,100	74,600
	May	44,500	28,200	72,600	45,200	29,000	74,300
	June	47,600	31,500	79,100	45,300	29,100	74,400
	July	48,100	32,600	80,700	44,900	28,800	73,700
	August	47,900	32,500	80,400	44,700	28,500	73,200
	September	44,400	29,300	73,700	44,300	28,400	72,700
	October	42,200	27,700	69,900	43,900	28,300	72,100

¹ Table contains revised figures.

Table 2c Persons 25 years of age and over on the Live Register - Unadjusted and Seasonally Adjusted

	Month	Unadjusted Series			Seasonally Adjusted Series ¹		
		Males	Females	All Persons	Males	Females	All Persons
2010	October	229,600	117,100	346,600	238,600	121,200	359,800
	November	229,200	115,300	344,500	237,200	120,400	357,600
	December	236,700	119,100	355,800	238,800	121,600	360,400
2011	January	239,800	120,700	360,400	236,200	122,200	358,400
	February	240,000	122,300	362,200	235,800	123,100	358,900
	March	238,700	121,100	359,800	237,000	123,900	360,900
	April	236,800	123,400	360,200	235,400	124,400	359,800
	May	237,900	122,100	360,000	237,500	124,500	362,000
	June	242,800	128,100	370,900	238,600	125,100	363,700
	July	243,800	137,100	381,000	238,800	126,400	365,200
	August	243,600	137,400	380,900	239,200	128,800	368,000
	September	232,800	123,700	356,600	238,100	125,800	363,900
	October	230,200	122,500	352,700	238,300	126,700	365,000
	November	230,300	123,700	354,000	237,700	128,500	366,200
	December	233,800	126,600	360,400	235,800	128,800	364,700
2012	January	237,400	126,900	364,200	234,500	128,400	362,900
	February	237,200	127,200	364,500	234,100	128,200	362,300
	March	235,100	126,000	361,100	233,300	128,000	361,300
	April	233,500	125,600	359,100	233,900	128,000	362,000
	May	234,300	126,000	360,300	234,100	128,600	362,700
	June	239,100	133,800	372,900	234,600	130,600	365,200
	July	239,700	139,900	379,600	234,300	129,000	363,300
	August	238,800	137,100	375,900	234,000	128,500	362,400
	September	229,400	126,300	355,600	234,200	128,400	362,500
	October	226,300	123,900	350,300	234,000	128,100	362,100

¹ Table contains revised figures.

Table 3 Seasonally Adjusted Standardised Unemployment Rates (SUR)¹

Month	2007	2008	2009	2010	2011	2012
	%	%	%	%	%	%
January	4.4	4.8	9.3	12.9	14.2	14.7
February ²	4.4	4.8	10.1	12.9	14.1	14.8
March	4.4	5.2	10.8	13.0	14.2	14.8
April	4.5	5.3	11.3	13.3	14.2	14.8
May ²	4.5	5.6	11.9	13.6	14.3	14.8 ³
June	4.5	6.0	12.1	13.5	14.4	14.9
July	4.5	6.4	12.3	13.6	14.4	14.9
August ²	4.5	6.9	12.5	13.6	14.6	14.8
September	4.6	7.1	12.7	14.0	14.4	14.8
October	4.6	7.6	12.7	14.2	14.5	14.8
November ²	4.8	8.0	12.8	14.4	14.5	
December	4.7	8.5	12.8	14.4	14.6	
Annual average	4.5	6.3	11.8	13.6	14.4	

¹ Table contains revised figures. See Background Notes.

² Benchmark Quarterly National Household Survey (QNHS) calendar quarter estimates.

³ The latest QNHS estimate of the unemployment rate (adjusted for seasonality) is: April -June 2012, 14.8%.

Table 4 Summary of flows¹ on and off the Live Register

		Number of Weeks	Males				Females				
			Live Register	New Regis- trations	Outflow (derived)	Average Weekly Change	Live Register	New Regis- trations	Outflow (derived)	Average Weekly Change	
JB Claims											
2011	October	4	52,546	8,650	9,656	- 252	46,467	7,275	8,141	- 217	
	November	4	52,336	8,891	9,101	- 53	46,878	9,755	9,344	+ 103	
	December	5	53,892	9,662	8,106	+ 311	48,771	8,745	6,852	+ 379	
2012	January	4	55,964	11,669	9,597	+ 518	48,369	10,242	10,644	- 101	
	February	4	55,317	8,814	9,461	- 162	47,937	8,136	8,568	- 108	
	March	5	53,266	9,215	11,266	- 410	45,706	7,103	9,334	- 446	
	April	4	51,678	7,471	9,059	- 397	44,534	9,252	10,424	- 293	
	May	4	50,379	6,629	7,928	- 325	43,610	5,858	6,782	- 231	
	June	5	49,815	8,362	8,926	- 113	46,974	10,633	7,269	+ 673	
	July	4	49,072	7,158	7,901	- 186	50,963	10,745	6,756	+ 997	
	August	5	47,230	7,278	9,120	- 368	46,824	6,837	10,976	- 828	
	September	4	44,251	6,226	9,205	- 745	39,412	5,752	13,164	- 1,853	
	October	4	43,519	7,258	7,990	- 183	38,099	5,850	7,163	- 328	
JA Applications											
2011	October	4	214,305	12,325	15,772	- 862	87,028	7,091	8,868	- 444	
	November	4	213,285	11,142	12,162	- 255	86,606	6,601	7,023	- 106	
	December	5	214,817	11,762	10,230	+ 306	86,636	5,948	5,918	+ 6	
2012	January	4	216,706	11,651	9,762	+ 472	87,494	6,424	5,566	+ 215	
	February	4	216,743	11,044	11,007	+ 9	87,940	6,345	5,899	+ 112	
	March	5	215,295	12,102	13,550	- 290	87,559	6,694	7,075	- 76	
	April	4	213,894	9,275	10,676	- 350	87,270	5,333	5,622	- 72	
	May	4	216,412	10,185	7,667	+ 630	89,579	6,427	4,118	+ 577	
	June	5	224,793	15,411	7,030	+ 1,676	96,660	10,843	3,762	+ 1,416	
	July	4	226,574	11,278	9,497	+ 445	99,428	8,174	5,406	+ 692	
	August	5	227,251	12,667	11,990	+ 135	100,535	8,008	6,901	+ 221	
	September	4	217,633	11,798	21,416	- 2,405	94,578	7,474	13,431	- 1,489	
	October	4	213,313	11,666	15,986	- 1,080	92,280	7,001	9,299	- 575	
Other Registrants											
2011	October	4	10,744	651	591	+ 15	19,342	1,042	1,015	+ 7	
	November	4	10,905	577	416	+ 40	19,557	1,193	978	+ 54	
	December	5	11,014	689	580	+ 22	19,654	1,125	1,028	+ 19	
2012	January	4	11,223	734	525	+ 52	19,833	1,309	1,130	+ 45	
	February	4	11,390	595	428	+ 42	20,095	1,168	906	+ 66	
	March	5	11,682	825	533	+ 58	20,546	1,295	844	+ 90	
	April	4	11,836	569	415	+ 39	20,789	1,183	940	+ 61	
	May	4	11,972	500	364	+ 34	20,955	806	640	+ 42	
	June	5	12,103	651	520	+ 26	21,629	1,509	835	+ 135	
	July	4	12,144	565	524	+ 10	22,142	1,707	1,194	+ 128	
	August	5	12,144	546	546	0	22,272	1,370	1,240	+ 26	
	September	4	11,905	493	732	- 60	21,556	976	1,692	- 179	
	October	4	11,713	557	749	- 48	21,248	937	1,245	- 77	

¹ Flow analysis: inflows and outflows published in this table do not take account of inter-scheme activity within the Live Register. For example, if a claimant exhausts his/her entitlement to JB and opens a new JA claim this is counted as an outflow in JB and an inflow in JA.

Table 5 Persons on the Live Register classified by region

NUTS2 and NUTS3 Regions ¹	October 2011	September 2012	October 2012	Monthly change	Annual change	Under 25 years	25 years & over
Males							
Border, Midland and Western	84,602	83,557	82,010	- 1,547	- 2,592	13,453	68,557
Border	38,942	38,398	37,562	- 836	- 1,380	6,387	31,175
Midland	21,127	21,079	20,945	- 134	- 182	3,410	17,535
West	24,533	24,080	23,503	- 577	- 1,030	3,656	19,847
Southern and Eastern	192,993	190,232	186,535	- 3,697	- 6,458	28,759	157,776
Dublin	67,618	68,110	66,373	- 1,737	- 1,245	10,530	55,843
Mid-East	26,543	25,679	25,252	- 427	- 1,291	3,851	21,401
Mid-West	24,059	23,473	22,987	- 486	- 1,072	3,630	19,357
South-East	36,564	35,970	35,142	- 828	- 1,422	5,624	29,518
South-West	38,209	37,000	36,781	- 219	- 1,428	5,124	31,657
Total	277,595	273,789	268,545	- 5,244	- 9,050	42,212	226,333
Females							
Border, Midland and Western	47,915	49,404	48,157	- 1,247	+ 242	9,235	38,922
Border	21,864	22,227	21,639	- 588	- 225	4,182	17,457
Midland	11,634	12,444	12,125	- 319	+ 491	2,561	9,564
West	14,417	14,733	14,393	- 340	- 24	2,492	11,901
Southern and Eastern	104,922	106,142	103,470	- 2,672	- 1,452	18,469	85,001
Dublin	34,947	36,083	34,862	- 1,221	- 85	6,478	28,384
Mid-East	15,200	15,261	14,883	- 378	- 317	2,464	12,419
Mid-West	13,828	13,704	13,345	- 359	- 483	2,403	10,942
South-East	19,819	20,379	19,815	- 564	- 4	3,806	16,009
South-West	21,128	20,715	20,565	- 150	- 563	3,318	17,247
Total	152,837	155,546	151,627	- 3,919	- 1,210	27,704	123,923
All Persons							
Border, Midland and Western	132,517	132,961	130,167	- 2,794	- 2,350	22,688	107,479
Border	60,806	60,625	59,201	- 1,424	- 1,605	10,569	48,632
Midland	32,761	33,523	33,070	- 453	+ 309	5,971	27,099
West	38,950	38,813	37,896	- 917	- 1,054	6,148	31,748
Southern and Eastern	297,915	296,374	290,005	- 6,369	- 7,910	47,228	242,777
Dublin	102,565	104,193	101,235	- 2,958	- 1,330	17,008	84,227
Mid-East	41,743	40,940	40,135	- 805	- 1,608	6,315	33,820
Mid-West	37,887	37,177	36,332	- 845	- 1,555	6,033	30,299
South-East	56,383	56,349	54,957	- 1,392	- 1,426	9,430	45,527
South-West	59,337	57,715	57,346	- 369	- 1,991	8,442	48,904
Total	430,432	429,335	420,172	- 9,163	- 10,260	69,916	350,256

¹ The composition of the regions is described in the Background Notes.

Table 6 Persons on the Live Register classified by last held occupation

Broad occupational group	October 2011	September 2012	October 2012	Monthly change	Annual change	Under 25 years	25 years & over
Males							
Managers and administrators	9,855	9,908	9,845	- 63	- 10	410	9,435
Professional	11,814	11,916	11,405	- 511	- 409	1,126	10,279
Associate professional and technical	7,294	7,249	6,986	- 263	- 308	957	6,029
Clerical and secretarial	11,169	11,527	11,058	- 469	- 111	1,544	9,514
Craft and related	97,632	91,765	90,097	- 1,668	- 7,535	9,753	80,344
Personal and protective service	17,764	17,795	17,670	- 125	- 94	2,801	14,869
Sales	17,404	18,289	17,475	- 814	+ 71	5,338	12,137
Plant and machine operatives	53,540	53,240	52,712	- 528	- 828	6,856	45,856
Other occupation	39,837	39,307	38,759	- 548	- 1,078	7,611	31,148
No occupation ¹	11,286	12,793	12,538	- 255	+ 1,252	5,816	6,722
Total	277,595	273,789	268,545	- 5,244	- 9,050	42,212	226,333
Females							
Managers and administrators	6,541	6,729	6,600	- 129	+ 59	242	6,358
Professional	12,775	13,780	13,153	- 627	+ 378	1,204	11,949
Associate professional and technical	5,286	5,354	5,254	- 100	- 32	577	4,677
Clerical and secretarial	29,894	29,395	28,540	- 855	- 1,354	2,009	26,531
Craft and related	7,178	7,277	7,211	- 66	+ 33	1,102	6,109
Personal and protective service	31,885	31,914	31,433	- 481	- 452	6,426	25,007
Sales	28,529	28,617	27,648	- 969	- 881	7,056	20,592
Plant and machine operatives	14,982	15,102	14,767	- 335	- 215	2,411	12,356
Other occupation	9,388	9,852	9,704	- 148	+ 316	3,002	6,702
No occupation ¹	6,379	7,526	7,317	- 209	+ 938	3,675	3,642
Total	152,837	155,546	151,627	- 3,919	- 1,210	27,704	123,923
All Persons							
Managers and administrators	16,396	16,637	16,445	- 192	+ 49	652	15,793
Professional	24,589	25,696	24,558	- 1,138	- 31	2,330	22,228
Associate professional and technical	12,580	12,603	12,240	- 363	- 340	1,534	10,706
Clerical and secretarial	41,063	40,922	39,598	- 1,324	- 1,465	3,553	36,045
Craft and related	104,810	99,042	97,308	- 1,734	- 7,502	10,855	86,453
Personal and protective service	49,649	49,709	49,103	- 606	- 546	9,227	39,876
Sales	45,933	46,906	45,123	- 1,783	- 810	12,394	32,729
Plant and machine operatives	68,522	68,342	67,479	- 863	- 1,043	9,267	58,212
Other occupation	49,225	49,159	48,463	- 696	- 762	10,613	37,850
No occupation ¹	17,665	20,319	19,855	- 464	+ 2,190	9,491	10,364
Total	430,432	429,335	420,172	- 9,163	- 10,260	69,916	350,256

¹ Includes those who never worked and those who have no stated occupation.

Table 7 Persons on the Live Register classified by duration of continuous registration

Duration	October 2011	September 2012	October 2012	Monthly change	Annual change	Under 25 years	25 years & over
Males							
Less than one year	147,303	137,581	135,596	- 1,985	- 11,707	25,644	109,952
One year or more	130,292	136,208	132,949	- 3,259	+ 2,657	16,568	116,381
Total	277,595	273,789	268,545	- 5,244	- 9,050	42,212	226,333
Females							
Less than one year	103,356	98,976	96,459	- 2,517	- 6,897	19,122	77,337
One year or more	49,481	56,570	55,168	- 1,402	+ 5,687	8,582	46,586
Total	152,837	155,546	151,627	- 3,919	- 1,210	27,704	123,923
All Persons							
Less than one year	250,659	236,557	232,055	- 4,502	- 18,604	44,766	187,289
One year or more	179,773	192,778	188,117	- 4,661	+ 8,344	25,150	162,967
Total	430,432	429,335	420,172	- 9,163	- 10,260	69,916	350,256

Table 8 Casual and part-time workers on the Live Register

		Males	Monthly change	Females	Monthly change	All Persons	Monthly change
2010	October	40,914	+ 515	37,010	+ 530	77,924	+ 1,045
	November	42,162	+ 1,248	38,046	+ 1,036	80,208	+ 2,284
	December	43,510	+ 1,348	38,548	+ 502	82,058	+ 1,850
2011	January	44,117	+ 607	39,115	+ 567	83,232	+ 1,174
	February	45,086	+ 969	39,973	+ 858	85,059	+ 1,827
	March	45,603	+ 517	40,552	+ 579	86,155	+ 1,096
	April	45,447	- 156	40,147	- 405	85,594	- 561
	May	45,071	- 376	39,862	- 285	84,933	- 661
	June	45,609	+ 538	40,156	+ 294	85,765	+ 832
	July	45,639	+ 30	40,226	+ 70	85,865	+ 100
	August	45,312	- 327	39,984	- 242	85,296	- 569
	September	44,731	- 581	39,286	- 698	84,017	- 1,279
	October	45,234	+ 503	39,795	+ 509	85,029	+ 1,012
	November	45,914	+ 680	40,698	+ 903	86,612	+ 1,583
	December	46,044	+ 130	40,771	+ 73	86,815	+ 203
2012	January	46,256	+ 212	40,773	+ 2	87,029	+ 214
	February	47,038	+ 782	41,176	+ 403	88,214	+ 1,185
	March	47,539	+ 501	41,177	+ 1	88,716	+ 502
	April	47,614	+ 75	40,828	- 349	88,442	- 274
	May	47,626	+ 12	40,438	- 390	88,064	- 378
	June	47,891	+ 265	40,574	+ 136	88,465	+ 401
	July	47,797	- 94	40,244	- 330	88,041	- 424
	August	47,569	- 228	39,585	- 659	87,154	- 887
	September	46,643	- 926	38,447	- 1,138	85,090	- 2,064
	October	46,829	+ 186	38,834	+ 387	85,663	+ 573

Table 9 Persons on the Live Register classified by nationality grouping

		Nationality grouping						
		Non-Irish nationals						
		United Kingdom	EU15 excl. Irl. & UK	EU15 to EU27 States	Other	Non-Irish nationals	Irish nationals	All Persons
2010	October	17,715	3,755	40,065	13,100	74,635	354,918	429,553
	November	17,598	3,705	40,728	12,751	74,782	350,220	425,002
	December	17,855	3,704	42,198	12,888	76,645	360,434	437,079
2011	January	18,078	3,793	43,619	13,037	78,527	364,150	442,677
	February	18,065	3,813	44,167	13,117	79,162	365,137	444,299
	March	17,956	3,817	43,722	13,099	78,594	362,599	441,193
	April	18,021	3,729	42,698	13,075	77,523	362,048	439,571
	May	18,075	3,711	41,791	13,401	76,978	363,969	440,947
	June	18,648	3,829	42,013	14,431	78,921	379,027	457,948
	July	19,006	3,872	41,732	14,675	79,285	390,999	470,284
	August	18,925	3,847	41,330	14,893	78,995	390,718	469,713
	September	17,894	3,586	40,000	13,941	75,421	362,020	437,441
	October	17,708	3,545	40,202	13,582	75,037	355,395	430,432
	November	17,648	3,571	40,788	13,512	75,519	354,048	429,567
	December	17,798	3,605	41,263	13,554	76,220	358,564	434,784
2012	January	17,827	3,648	42,831	13,845	78,151	361,438	439,589
	February	17,783	3,685	43,341	13,946	78,755	360,667	439,422
	March	17,521	3,608	43,025	13,926	78,080	355,974	434,054
	April	17,337	3,558	42,268	13,852	77,015	352,986	430,001
	May	17,447	3,551	41,634	14,151	76,783	356,124	432,907
	June	18,054	3,770	41,360	15,072	78,256	373,718	451,974
	July	18,290	3,756	41,167	15,209	78,422	381,901	460,323
	August	18,143	3,700	40,629	15,277	77,749	378,507	456,256
	September	17,135	3,525	39,335	14,324	74,319	355,016	429,335
	October	16,767	3,477	39,347	13,906	73,497	346,675	420,172

Annex - Activation Programmes

The table below contains the end of September 2012 data on the number of people availing of a range of programmes targeted primarily at the long-term unemployed (over 12 months) and other welfare recipients, including Lone Parents.

There were 73,449 people availing of these programmes in September 2012, which is an increase of 5,245 (+7.7%) from the previous year, when there were 68,204 people in activation programmes.

Persons on activation programmes are not counted as part of the monthly Live Register.

Live Register Activation Programmes

	September 2011	August 2012	September 2012
Back to Work Schemes			
Back to Work allowance scheme - Employee strand ¹	282	38	32
Back to Work Enterprise allowance scheme -self employed strand	10,192	11,023	10,965
Short-term Enterprise Allowance ²	1,269	1,156	1,145
Total Back to Work payments	11,743	12,217	12,142
Other Activation Programmes			
DSP Part-time Job Incentive	161	190	190
TUS - Community Work Placement Initiative (2011)	825	4,486	4,432
JobBridge (2011)	1,587	4,819	4,892
Total Other Activation Programmes	2,573	9,495	9,514
Community Employment Schemes (excluding Supervisors)	21,928	21,325	21,243
FAS Full Time Training for Unemployed People³	8,520	6,305	8,576
Back to Education Courses			
Vocational Training Opportunities Scheme (VTOS) ⁴	N/A	N/A	N/A
Back to Education Allowance (BTEA) ⁵	18,440	3,407	16,974
Total Back to Education Courses	23,440	8,407	21,974
Total Activation Programmes	68,204	57,749	73,449

¹ This scheme was closed to new applications from 1st May 2009.

² This scheme was introduced from 1st May 2009. It provides immediate support for someone in receipt of Jobseekers Benefit who wants to start a business.

³ Specific Skills Training/Local Training initiative/Traineeship/Return to Work. Breakdown became available for April 2012 Live Register release.

⁴ VTOS figures are estimated at 5,000 each year.

⁵ BTEA figures include all schemes but participants from JA & JB are not entitled to BTEA during the summer holidays.

Background Notes

Source and scope of the Live Register The Live Register is compiled from returns made for each local office to the Central Statistics Office by the Department of Social Protection. It comprises of persons under 65 years of age in the following classes:

- ◆ All Claimants for Jobseekers Benefit (JB) excluding systematic short-time workers
- ◆ Applicants for Jobseekers Allowance (JA) excluding smallholders/farm assists and other self-employed persons
- ◆ Other registrants including applicants for credited Social Welfare contributions but excluding those directly involved in an industrial dispute.

Reference Period The reference periods for the Live Register results are as follows:
October 2012 – 29th September to 26th October 2012
October 2011 – 1st October to 28th October 2011

Unemployment statistics The Live Register is not designed to measure unemployment. It includes part-time (those who work up to three days a week), seasonal and casual workers entitled to Jobseekers Allowance and or Jobseekers Benefit. **Unemployment is measured by the Quarterly National Household Survey** (formerly the Annual Labour Force Survey).

Standardised unemployment rates The Standardised Unemployment Rate (SUR) series in Table 3 is based on the estimated number of persons unemployed expressed as a percentage of the total economically active population (i.e. the Labour Force), using internationally comparable definitions of employment and unemployment, as recommended by the International Labour Office.

Official estimates of the number of persons unemployed and the unemployment rate are produced from the Quarterly National Household Survey (QNHS). The QNHS is the only source of information on unemployment and employment which can apply standard International Labour Organisation (ILO) methodology to the estimation of these key indicators. The background notes of the QNHS release contain more information on the ILO criteria. Given the timelag required to produce estimates from the QNHS and the quarterly periodicity, short-term trends in the Live Register are used to estimate more up-to-date monthly unemployment rates.

The seasonally adjusted QNHS estimate of unemployment is used as a benchmark for February (Quarter 1 QNHS), May (Quarter 2 QNHS), August (Quarter 3 QNHS) and November (Quarter 4 QNHS) each year. The latest QNHS benchmark is updated using the trend in the seasonally adjusted Live Register to allow the estimation of the SUR. Once new QNHS data is available it is used to revise the SUR series. The assumption underlying this methodology is that over short periods the change in the seasonally adjusted Live Register will represent accurately the change in unemployment which will be seen from the QNHS. This methodology has been used since the QNHS was first initiated at the end of 1997.

QNHS The Quarterly National Household Survey (QNHS), which began in September 1997, replaced the Labour Force Survey and provides quarterly estimates of the unemployment rate. Up to and including the fourth quarter of 2008 the QNHS operated on a seasonal quarter basis. As of the first quarter 2009 the QNHS is now undertaken on a calendar quarter basis.

The calendar reference quarters for survey results are:

Q1 - January to March, Q2 - April to June, Q3 - July to September and Q4 - October to December.

The calendar quarter estimates for Q2 2012 (adjusted for seasonality) are:

	Q1	Q2	Q3	Q4
	%	%	%	%
2007	4.4	4.5	4.5	4.8
2008	4.8	5.6	6.9	8.0
2009	10.1	11.9	12.5	12.8
2010	12.9	13.6	13.6	14.4
2011	14.1	14.3	14.6	14.5
2012	14.8	14.8		

Seasonal adjustment Since January 2011 the seasonal adjustment of the Live Register is completed by applying the X-12-ARIMA model, developed by the U.S. Census Bureau. Seasonal adjustment is conducted using the indirect approach, where each individual series is independently adjusted (male under 25 years, female under 25 years, male 25 years and over and female 25 years and over). To preserve consistency between the individual and aggregate series, the series for gender, age group and total Live Register are then created from these four component series.

The X-12 ARIMA method has the X-11 moving averages process at its core, but builds on this by providing options for pre-treating the series using a regARIMA approach for prior adjustment and series extension. In essence this methodology will estimate seasonal factors while taking account of temporary changes, outliers, level shifts and calendar effects (e.g timing of Easter).

All Live Register series are updated monthly with the latest three years of seasonally adjusted data as part of the concurrent approach. The comprehensive annual review contains revisions to the entire series. Revisions to the series are typically very minor in scale.

For additional information on the use of X-12-ARIMA see detailed note in the January 2011 LiveRegister release.

Jobseeker's Benefit Duration Prior to 19 January 2004 Jobseeker's Benefit was payable for **15 months** (390 days).

From 19 January 2004, Jobseeker's Benefit could be paid for a maximum of 15 months (390 days) to people who had at least 260 paid PRSI contributions. Jobseeker's Benefit could be paid for a maximum of 12 months (312 days) to people who had less than 260 paid contributions (Refers to new claim).

Since 15 October 2008, Jobseeker's Benefit can be paid for a maximum of **12 months** (312 days) to people who have at least 260 paid PRSI contributions. Jobseeker's Benefit can be paid for a maximum of **9 months** (234 days) to people who have less than 260 paid contributions (Refers to new claims).

Live Register Flows Live Register flows data is sourced from information collected by the Department of Social Protection. The aggregate of new registrations for each month is used in conjunction with the net change over the same period to calculate the outflow from the register. A new registration is defined as anybody on the Live Register in a particular month who was not on it the previous month. Inflows and outflows published in this release do not take account of inter-scheme activity within the Live Register. For example, if a claimant exhausts his/her entitlement to JB and opens a new JA claim this is counted as an outflow in JB and an inflow in JA.

Live Register Area Analysis The basis of the area analysis in Live Register statistics is the Department of Social Protection local office of registration. The areas served by Local Employment Offices do not correspond to specific geographic boundaries. Therefore, registrants at a given local office do not necessarily come from a particular region or area which can be precisely delineated e.g. data for the Cork City Local Office of Registration refers to all persons signing on in Cork City but may include persons not resident in Cork City. **The latest available Live Register data by Province, County and Local Office of Registration will be released on the CSO website through the CSO Main Data Dissemination Service, StatBank one day after the publication of this release.**

NUTS2 and NUTS3 regions The Regional classifications are based on the NUTS (Nomenclature of Territorial Units) classification used by Eurostat. The NUTS3 regions correspond to the eight Regional Authorities established under the Local Government Act, 1991 (Regional Authorities) (Establishment) Order, 1993, which came into operation on 1 January 1994. The NUTS2 regions, which were proposed by Government and agreed by Eurostat in 1999, are groupings of the NUTS3 regions.

Border, Midland and Western NUTS2 Region

Border	Cavan Donegal Leitrim Louth Monaghan Sligo
Midland	Laois Longford Offaly Westmeath
West	Galway City Galway County Mayo Roscommon

Southern and Eastern NUTS2 Region

Dublin	Dublin City Dun Laoghaire-Rathdown Fingal South Dublin
Mid-East	Kildare Meath Wicklow
Mid-West	Clare Limerick City Limerick County North Tipperary
South-East	Carlow Kilkenny South Tipperary Waterford City Waterford County Wexford
South-West	Cork City Cork County Kerry

Occupations Live Register occupational data is sourced from information collected by the Department of Social Protection on the most recent occupation of claimants when they sign on the Live Register. The classification used is based on the UK Standard Occupational Classification (SOC). “No occupation” is an additional category and includes those who have never worked and those who have no stated occupation.

Age by Duration Analysis Duration of continuous registration on the Live Register was previously compiled on a half-yearly basis (April and October). The Live Register Age by Duration release has now been replaced by a monthly table in this release. The bi-annual release related to the second last Friday of the reference month but the monthly age by duration data since October 2009 corresponds to the end of month Live Register totals. **Detailed tables relating to regional and scheme data will continue to be made available on the CSO website through the CSO Main Data Dissemination Service, StatBank on a bi-annual basis.**

Casual and part-time workers The casual and part-time workers’ figure is based on data supplied by the Department of Social Protection. People may apply for Jobseeker’s Benefit or Jobseeker’s Allowance if they only work for part of a week and be included on the Live Register.

Nationality Data in the nationality grouping table is sourced from information collected by the Department of Social Protection on the nationality of claimants when they first sign on the Live Register.

CSO StatBank More detailed information on geographic breakdowns of the Live Register and duration of continuous registration along with all Live Register published data can be found on the CSO Main Data Dissemination Service, StatBank on the CSO website

<http://www.cso.ie/>

Go to:

- > Databases
- > StatBank (CSO Main Dissemination Service)
- > Labour Market and Earnings
- > Labour Force
- > Live Register

or click

<http://cso.ie/shorturl.aspx/39>

For further information or assistance use the contact details on the front page of the release or e-mail labour@cso.ie