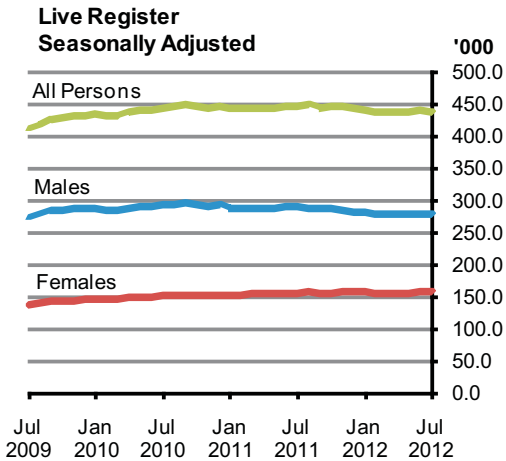




Live Register July 2012



	Live Register Total	Seasonally Adjusted	Standardised Unemployment Rate (SUR)%
July 2011	470,284	447,200	14.5
June 2012	451,974	439,600	14.8
July 2012	460,323	437,300	14.8
			Percentage Points
Change in month	-	- 2,300	0.0
Change in year	- 9,961	-	+0.3

Seasonally adjusted Live Register decreases by 2,300 in July

On a seasonally adjusted basis the Live Register total recorded a monthly decrease of 2,300 in July 2012, bringing the seasonally adjusted total to 437,300. *See table 2a.*

The standardised unemployment rate (SUR) in July 2012 was 14.8%, unchanged from the latest June 2012 rate. The seasonally adjusted unemployment rate from the most recent Quarterly National Household Survey (QNHS) was 14.8% in the first quarter of 2012. *See table 3.*

In unadjusted terms there were 460,323 people signing on the Live Register in July 2012. This represents an annual decrease of 9,961 (-2.1%). The trend in the overall Live Register continues to be one of movement within a small range. *See table 1a.*

Other features include:

- ◆ On a seasonally adjusted basis the Live Register showed a monthly decrease of 800 males in July 2012, while females decreased by 1,600 over the same period. *See table 2a.*
- ◆ The number of male claimants decreased by 9,980 (-3.4%) to 287,790 over the year and female claimants increased by 19 to 172,533. This compares with a decrease of 2,690 (-0.9%) to 297,770 for males and an increase of 6,150 (+3.7%) to 172,514 for females in the year to July 2011. *See table 1a.*

The Live Register is not designed to measure unemployment. It includes part-time workers (those who work up to three days a week), seasonal and casual workers entitled to Jobseeker's Benefit or Allowance. Unemployment is measured by the Quarterly National Household Survey and the latest estimated number of persons unemployed as of the first quarter of 2012 was 309,000.

For more information contact Sabrina Bowen at 021 453 5151, Karen Desmond at 021 453 5534 or Brendan Curtin at 021 453 5577.

Published by the Central Statistics Office, Ireland.

Ardee Road Dublin 6 Ireland
Skehard Road Cork Ireland

LoCall: 1890 313 414 (ROI)
0870 876 0256 (UK/NI)

Tel: +353 1 498 4000 Fax: +353 1 498 4229
Tel: +353 21 453 5000 Fax: +353 21 453 5492

Both offices may be contacted through any of these telephone numbers.

CSO on the Web: www.cso.ie
and go to

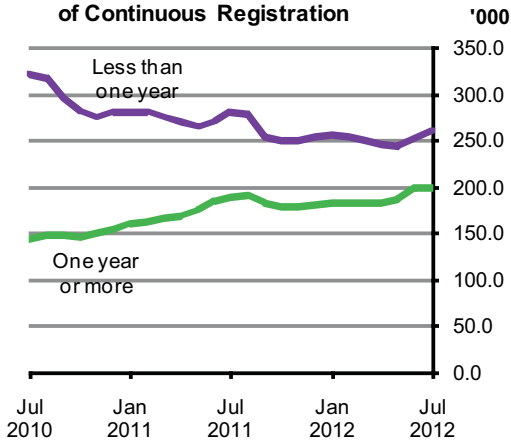
Labour Market and Earnings: Labour Market

Director General: Pádraig Dalton

Enquiries:

Live Register statistics: Live Register Section, ext 5491
Email: labour@cso.ie
General queries: Information Section, ext 5021
Email: information@cso.ie

Live Register classified by Duration of Continuous Registration



Live Register duration of continuous registration

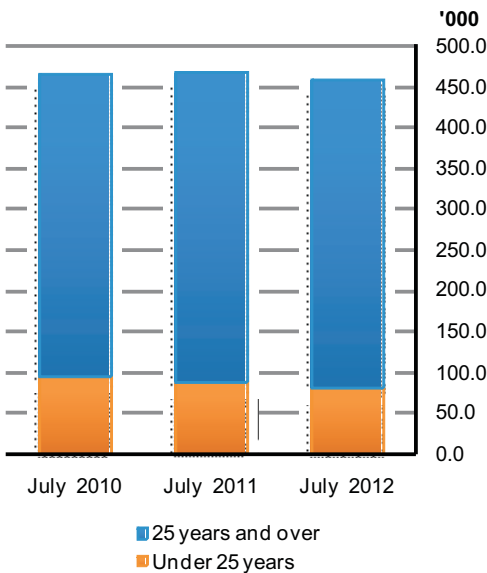
The number of long term claimants on the Live Register in July 2012 was 200,086. The number of male long term claimants increased by 4,160 (+3.0%) in the year to July 2012, while the comparable increase for females was 5,864 (+11.1%) giving an overall annual increase of 10,024 (+5.3%) in the number of long term claimants. *See table 7 and graph opposite.*

In July 56.5% (260,237) of all claimants on the Live Register were short term claimants. The comparable figure for July 2011 was 59.6% (280,222). The annual fall of 19,985 (-7.1%) in the number of short term claimants consisted of a decrease of 14,140 (-8.8%) in the number of male short term claimants and a decrease of 5,845 (-4.9%) in female short term claimants.

Live Register casual and part-time workers

There were 88,041 casual and part-time workers on the Live Register in July, which represents 19.1% of the total Live Register. This compares with 18.3% one year earlier when there were 85,865 casual and part-time workers on the Live Register. In the year to July 2012 the number of casual and part-time workers increased by 2,176 (+2.5%), with the number of males increasing by 2,158 (+4.7%) and the number of females increasing by 18. *See table 8.*

Live Register classified by Age Group



Live Register age groups

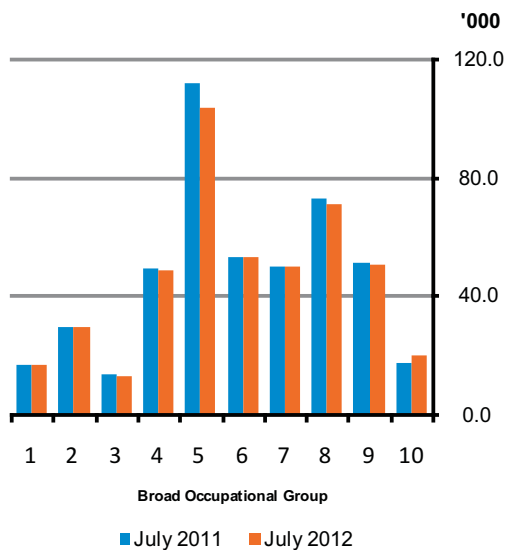
In the year to July 2012 the number of persons aged 25 and over on the Live Register decreased by 1,340 (-0.4%), and the number of persons aged under 25 decreased by 8,621 (-9.7%). Annual decreases in persons aged under 25 have occurred in all months since July 2010. The percentage of persons aged under 25 on the Live Register now stands at 17.5% for July 2012, down from 19.0% in July 2011 and 20.3% in July 2010. *See tables 1b and 1c and graph opposite.*

Live Register new registrants

There were 39,627 new registrants on the Live Register in July 2012, consisting of 17,903 JB claims, 19,452 JA claims and 2,272 'Other Registrants'. Males accounted for 47.9% (19,001) and females 52.1% (20,626) of all new registrants. On average 4,750 male and 5,157 female new registrants joined the Live Register each week of the month. The difference between the number of new registrants on the Live Register and the change in the total number on the Live Register is accounted for by closed claims and movements between schemes. *See table 4.*

Data on Activation Programmes for June 2012 is included in the Annex of this release. Numbers of people participating in Activation Programmes are not included in the Live Register count.

Live Register classified by Last Held Occupation



KEY

- 1- Managers and administrators
- 2- Professional
- 3- Associate professional and technical
- 4- Clerical and secretarial
- 5- Craft and related
- 6- Personal and protective service
- 7- Sales
- 8- Plant and machine operatives
- 9- Other occupation
- 10- No occupation

Live Register by other classifications

Bearing in mind the overall annual decrease of 2.1% in the number of people on the Live Register in July the main other points which can be noted include:

- ◆ An annual increase of 1.7% brought the total number of Jobseeker's Allowance (JA) claimants to 326,002 in July 2012, while Jobseeker's Benefit (JB) claimants decreased to 100,035 (-15.9%) over the same period. As a result JA claimants account for 70.8% of all persons on the Live Register in July 2012 compared with 68.2% a year earlier. *See table 1a.*
- ◆ Annual decreases occurred in seven of the eight NUTS 3 regions with the largest percentage decrease in the West region (-4.2%). The only percentage increase occurred in the Midland region (+0.1%). *See table 5.*
- ◆ Craft and related (22.6%) remained the largest occupational group on the Live Register in July, despite the fact that the number in the group fell over the year by 8,342 (-7.4%) to 104,229. The second largest annual percentage decrease was in the *Associate, professional and technical* group (-4.8%) followed by *Plant and machine operatives* group (-2.3%). *See table 6 and graph opposite.*
- ◆ In July Irish nationals accounted for 83.0% (381,901) of the number of persons on the Live Register. Of the 78,422 non-Irish nationals, the largest constituent group on the Live Register was nationals from the EU15 to EU27 States (41,167), followed by the UK (18,290). *See table 9.*

¹ While the 'No Occupation' group is excluded from the analysis its subtotals are included in the relevant calculations presented in the text.

Table 1a Total persons on the Live Register

Category	July 2011	June 2012	July 2012	Monthly change	Annual change
Males					
JB Claims	60,064	49,815	49,072	- 743	- 10,992
JA Applications	227,000	224,793	226,574	+ 1,781	- 426
Other Registrants	10,706	12,103	12,144	+ 41	+ 1,438
Total	297,770	286,711	287,790	+ 1,079	- 9,980
Females					
JB Claims	58,926	46,974	50,963	+ 3,989	- 7,963
JA Applications	93,701	96,660	99,428	+ 2,768	+ 5,727
Other Registrants	19,887	21,629	22,142	+ 513	+ 2,255
Total	172,514	165,263	172,533	+ 7,270	+ 19
All Persons					
JB Claims	118,990	96,789	100,035	+ 3,246	- 18,955
JA Applications	320,701	321,453	326,002	+ 4,549	+ 5,301
Other Registrants	30,593	33,732	34,286	+ 554	+ 3,693
Total	470,284	451,974	460,323	+ 8,349	- 9,961

Table 1b Persons under 25 years of age on the Live Register

Category	July 2011	June 2012	July 2012	Monthly change	Annual change
Males					
JB Claims	5,880	4,064	3,939	- 125	- 1,941
JA Applications	47,891	43,420	44,010	+ 590	- 3,881
Other Registrants	154	125	120	- 5	- 34
Total	53,925	47,609	48,069	+ 460	- 5,856
Females					
JB Claims	5,656	3,801	3,956	+ 155	- 1,700
JA Applications	29,473	27,443	28,419	+ 976	- 1,054
Other Registrants	272	245	261	+ 16	- 11
Total	35,401	31,489	32,636	+ 1,147	- 2,765
All Persons					
JB Claims	11,536	7,865	7,895	+ 30	- 3,641
JA Applications	77,364	70,863	72,429	+ 1,566	- 4,935
Other Registrants	426	370	381	+ 11	- 45
Total	89,326	79,098	80,705	+ 1,607	- 8,621

Table 1c Persons 25 years of age and over on the Live Register

Category	July 2011	June 2012	July 2012	Monthly change	Annual change
Males					
JB Claims	54,184	45,751	45,133	- 618	- 9,051
JA Applications	179,109	181,373	182,564	+ 1,191	+ 3,455
Other Registrants	10,552	11,978	12,024	+ 46	+ 1,472
Total	243,845	239,102	239,721	+ 619	- 4,124
Females					
JB Claims	53,270	43,173	47,007	+ 3,834	- 6,263
JA Applications	64,228	69,217	71,009	+ 1,792	+ 6,781
Other Registrants	19,615	21,384	21,881	+ 497	+ 2,266
Total	137,113	133,774	139,897	+ 6,123	+ 2,784
All Persons					
JB Claims	107,454	88,924	92,140	+ 3,216	- 15,314
JA Applications	243,337	250,590	253,573	+ 2,983	+ 10,236
Other Registrants	30,167	33,362	33,905	+ 543	+ 3,738
Total	380,958	372,876	379,618	+ 6,742	- 1,340

Table 2a Total persons on the Live Register - Unadjusted and Seasonally Adjusted

	Month	Unadjusted Series			Seasonally Adjusted Series ¹		
		Males	Females	All Persons	Males	Females	All Persons
2010	July	300,500	166,400	466,800	292,700	152,000	444,700
	August	300,000	167,000	466,900	293,300	153,400	446,600
	September	289,800	152,600	442,400	295,800	153,600	449,400
	October	281,600	148,000	429,600	292,900	153,100	446,000
	November	280,200	144,800	425,000	290,800	152,000	442,900
	December	288,800	148,300	437,100	292,300	153,100	445,400
2011	January	292,000	150,700	442,700	288,800	153,500	442,300
	February	291,800	152,500	444,300	287,900	154,400	442,300
	March	290,200	151,000	441,200	288,900	155,700	444,600
	April	286,700	152,800	439,600	287,100	155,800	442,900
	May	288,300	152,700	440,900	288,700	156,000	444,700
	June	296,100	161,800	457,900	289,400	156,300	445,800
	July	297,800	172,500	470,300	289,300	158,000	447,200
	August	296,900	172,900	469,700	289,100	158,800	448,000
	September	282,000	155,500	437,400	287,200	156,500	443,700
	October	277,600	152,800	430,400	287,500	157,900	445,400
	November	276,500	153,000	429,600	286,100	159,800	445,900
	December	279,700	155,100	434,800	283,000	159,500	442,500
2012	January	283,900	155,700	439,600	281,500	158,600	440,100
	February	283,500	156,000	439,400	280,700	158,100	438,800
	March	280,200	153,800	434,100	279,200	157,400	436,700
	April	277,400	152,600	430,000	279,600	157,200	436,800
	May	278,800	154,100	432,900	279,400	157,700	437,100
	June	286,700	165,300	452,000	279,800	159,800	439,600
	July	287,800	172,500	460,300	279,000	158,200	437,300

¹ Table contains revised figures.**Table 2b Persons under 25 years of age on the Live Register - Unadjusted and Seasonally Adjusted**

	Month	Unadjusted Series			Seasonally Adjusted Series ¹		
		Males	Females	All Persons	Males	Females	All Persons
2010	July	58,600	36,000	94,600	55,200	31,700	86,900
	August	58,300	36,300	94,600	55,100	31,900	86,900
	September	55,200	33,500	88,700	55,400	32,400	87,700
	October	52,000	30,900	82,900	54,400	31,800	86,200
	November	51,000	29,500	80,500	53,600	31,600	85,200
	December	52,100	29,200	81,300	53,600	31,500	85,100
2011	January	52,200	30,000	82,200	52,600	31,300	83,900
	February	51,900	30,200	82,100	51,900	31,300	83,200
	March	51,500	29,800	81,400	51,800	31,600	83,400
	April	49,900	29,500	79,400	51,400	31,400	82,800
	May	50,400	30,500	81,000	51,200	31,500	82,600
	June	53,300	33,700	87,000	50,900	31,200	82,100
	July	53,900	35,400	89,300	50,500	31,200	81,800
	August	53,300	35,500	88,800	50,100	31,100	81,200
	September	49,200	31,700	80,900	49,200	30,600	79,800
	October	47,400	30,300	77,700	49,300	31,100	80,400
	November	46,200	29,400	75,600	48,400	31,300	79,700
	December	45,900	28,500	74,300	47,200	30,700	77,900
2012	January	46,500	28,800	75,300	46,900	30,200	77,100
	February	46,200	28,700	74,900	46,400	29,800	76,300
	March	45,200	27,800	73,000	45,700	29,300	75,000
	April	43,900	27,000	70,900	45,400	29,100	74,600
	May	44,500	28,200	72,600	45,200	29,000	74,300
	June	47,600	31,500	79,100	45,300	29,100	74,400
	July	48,100	32,600	80,700	44,900	28,800	73,700

¹ Table contains revised figures.

Table 2c Persons 25 years of age and over on the Live Register - Unadjusted and Seasonally Adjusted

	Month	Unadjusted Series			Seasonally Adjusted Series ¹		
		Males	Females	All Persons	Males	Females	All Persons
2010	July	241,800	130,400	372,200	237,400	120,300	357,800
	August	241,700	130,700	372,400	238,200	121,500	359,700
	September	234,600	119,100	353,800	240,400	121,200	361,600
	October	229,600	117,100	346,600	238,500	121,300	359,800
	November	229,200	115,300	344,500	237,200	120,400	357,600
	December	236,700	119,100	355,800	238,800	121,600	360,400
2011	January	239,800	120,700	360,400	236,300	122,200	358,400
	February	240,000	122,300	362,200	236,000	123,100	359,100
	March	238,700	121,100	359,800	237,100	124,200	361,300
	April	236,800	123,400	360,200	235,600	124,400	360,100
	May	237,900	122,100	360,000	237,500	124,600	362,100
	June	242,800	128,100	370,900	238,500	125,200	363,700
	July	243,800	137,100	381,000	238,700	126,800	365,500
	August	243,600	137,400	380,900	239,100	127,700	366,800
	September	232,800	123,700	356,600	238,000	125,900	363,900
	October	230,200	122,500	352,700	238,200	126,900	365,100
	November	230,300	123,700	354,000	237,700	128,500	366,200
	December	233,800	126,600	360,400	235,800	128,900	364,600
2012	January	237,400	126,900	364,200	234,600	128,400	363,000
	February	237,200	127,200	364,500	234,300	128,200	362,500
	March	235,100	126,000	361,100	233,500	128,100	361,600
	April	233,500	125,600	359,100	234,200	128,100	362,200
	May	234,300	126,000	360,300	234,100	128,700	362,800
	June	239,100	133,800	372,900	234,500	130,600	365,200
	July	239,700	139,900	379,600	234,200	129,400	363,600

¹ Table contains revised figures.

Table 3 Seasonally Adjusted Standardised Unemployment Rates (SUR)¹

Month	2007	2008	2009	2010	2011	2012
	%	%	%	%	%	%
January	4.4	4.8	9.3	12.9	14.2	14.7
February ²	4.4	4.8	10.1	12.9	14.1	14.8 ³
March	4.4	5.2	10.8	13.0	14.2	14.7
April	4.5	5.3	11.3	13.3	14.2	14.7
May ²	4.5	5.6	11.9	13.6	14.3	14.7
June	4.5	6.0	12.1	13.5	14.4	14.8
July	4.5	6.4	12.3	13.6	14.5	14.8
August ²	4.5	6.9	12.5	13.6	14.6	
September	4.6	7.1	12.7	14.0	14.4	
October	4.6	7.6	12.7	14.2	14.5	
November ²	4.8	8.0	12.8	14.4	14.5	
December	4.7	8.5	12.8	14.4	14.6	
Annual average	4.5	6.3	11.8	13.6	14.4	

¹ Table contains revised figures. See Background Notes.

² Benchmark Quarterly National Household Survey (QNHS) calendar quarter estimates.

³ The latest QNHS estimate of the unemployment rate (adjusted for seasonality) is: January -March 2012, 14.8%.

Table 4 Summary of flows¹ on and off the Live Register

		Number of Weeks	Males				Females			
			Live Register	New Regis- trations	Outflow (derived)	Average Weekly Change	Live Register	New Regis- trations	Outflow (derived)	Average Weekly Change
JB Claims										
2011	July	5	60,064	10,329	11,827	- 300	58,926	15,392	9,362	+ 1,206
	August	4	57,999	6,543	8,608	- 516	57,710	6,641	7,857	- 304
	September	5	53,552	9,298	13,745	- 889	47,333	8,831	19,208	- 2,075
	October	4	52,546	8,650	9,656	- 252	46,467	7,275	8,141	- 217
	November	4	52,336	8,891	9,101	- 53	46,878	9,755	9,344	+ 103
	December	5	53,892	9,662	8,106	+ 311	48,771	8,745	6,852	+ 379
2012	January	4	55,964	11,669	9,597	+ 518	48,369	10,242	10,644	- 101
	February	4	55,317	8,814	9,461	- 162	47,937	8,136	8,568	- 108
	March	5	53,266	9,215	11,266	- 410	45,706	7,103	9,334	- 446
	April	4	51,678	7,471	9,059	- 397	44,534	9,252	10,424	- 293
	May	4	50,379	6,629	7,928	- 325	43,610	5,858	6,782	- 231
	June	5	49,815	8,362	8,926	- 113	46,974	10,633	7,269	+ 673
	July	4	49,072	7,158	7,901	- 186	50,963	10,745	6,756	+ 997
JA Applications										
2011	July	5	227,000	15,220	12,176	+ 609	93,701	10,503	6,540	+ 793
	August	4	227,981	10,924	9,943	+ 245	95,116	6,662	5,247	+ 354
	September	5	217,752	15,097	25,326	- 2,046	88,805	9,261	15,572	- 1,262
	October	4	214,305	12,325	15,772	- 862	87,028	7,091	8,868	- 444
	November	4	213,285	11,142	12,162	- 255	86,606	6,601	7,023	- 106
	December	5	214,817	11,762	10,230	+ 306	86,636	5,948	5,918	+ 6
2012	January	4	216,706	11,651	9,762	+ 472	87,494	6,424	5,566	+ 215
	February	4	216,743	11,044	11,007	+ 9	87,940	6,345	5,899	+ 112
	March	5	215,295	12,102	13,550	- 290	87,559	6,694	7,075	- 76
	April	4	213,894	9,275	10,676	- 350	87,270	5,333	5,622	- 72
	May	4	216,412	10,185	7,667	+ 630	89,579	6,427	4,118	+ 577
	June	5	224,793	15,411	7,030	+ 1,676	96,660	10,843	3,762	+ 1,416
	July	4	226,574	11,278	9,497	+ 445	99,428	8,174	5,406	+ 692
Other Registrants										
2011	July	5	10,706	757	682	+ 15	19,887	1,922	1,200	+ 144
	August	4	10,873	612	445	+ 42	20,034	945	798	+ 37
	September	5	10,684	692	881	- 38	19,315	1,311	2,030	- 144
	October	4	10,744	651	591	+ 15	19,342	1,042	1,015	+ 7
	November	4	10,905	577	416	+ 40	19,557	1,193	978	+ 54
	December	5	11,014	689	580	+ 22	19,654	1,125	1,028	+ 19
2012	January	4	11,223	734	525	+ 52	19,833	1,309	1,130	+ 45
	February	4	11,390	595	428	+ 42	20,095	1,168	906	+ 66
	March	5	11,682	825	533	+ 58	20,546	1,295	844	+ 90
	April	4	11,836	569	415	+ 39	20,789	1,183	940	+ 61
	May	4	11,972	500	364	+ 34	20,955	806	640	+ 42
	June	5	12,103	651	520	+ 26	21,629	1,509	835	+ 135
	July	4	12,144	565	524	+ 10	22,142	1,707	1,194	+ 128

¹ Flow analysis: inflows and outflows published in this table do not take account of inter-scheme activity within the Live Register. For example, if a claimant exhausts his/her entitlement to JB and opens a new JA claim this is counted as an outflow in JB and an inflow in JA.

Table 5 Persons on the Live Register classified by region

NUTS2 and NUTS3 Regions ¹	July 2011	June 2012	July 2012	Monthly change	Annual change	Under 25 years	25 years & over
Males							
Border, Midland and Western	91,528	87,527	88,075	+ 548	- 3,453	15,295	72,780
Border	42,089	40,466	40,721	+ 255	- 1,368	7,341	33,380
Midland	22,349	21,838	21,881	+ 43	- 468	3,736	18,145
West	27,090	25,223	25,473	+ 250	- 1,617	4,218	21,255
Southern and Eastern	206,242	199,184	199,715	+ 531	- 6,527	32,774	166,941
Dublin	72,890	71,314	71,450	+ 136	- 1,440	11,927	59,523
Mid-East	28,327	27,228	27,173	- 55	- 1,154	4,447	22,726
Mid-West	25,831	24,265	24,560	+ 295	- 1,271	4,056	20,504
South-East	38,733	37,296	37,560	+ 264	- 1,173	6,502	31,058
South-West	40,461	39,081	38,972	- 109	- 1,489	5,842	33,130
Total	297,770	286,711	287,790	+ 1,079	- 9,980	48,069	239,721
Females							
Border, Midland and Western	54,313	52,415	54,772	+ 2,357	+ 459	10,935	43,837
Border	24,772	23,976	24,929	+ 953	+ 157	5,132	19,797
Midland	13,071	13,025	13,577	+ 552	+ 506	2,928	10,649
West	16,470	15,414	16,266	+ 852	- 204	2,875	13,391
Southern and Eastern	118,201	112,848	117,761	+ 4,913	- 440	21,701	96,060
Dublin	39,902	38,000	39,801	+ 1,801	- 101	7,394	32,407
Mid-East	17,128	16,226	16,920	+ 694	- 208	2,977	13,943
Mid-West	15,439	14,584	15,226	+ 642	- 213	2,861	12,365
South-East	22,108	21,671	22,677	+ 1,006	+ 569	4,553	18,124
South-West	23,624	22,367	23,137	+ 770	- 487	3,916	19,221
Total	172,514	165,263	172,533	+ 7,270	+ 19	32,636	139,897
All Persons							
Border, Midland and Western	145,841	139,942	142,847	+ 2,905	- 2,994	26,230	116,617
Border	66,861	64,442	65,650	+ 1,208	- 1,211	12,473	53,177
Midland	35,420	34,863	35,458	+ 595	+ 38	6,664	28,794
West	43,560	40,637	41,739	+ 1,102	- 1,821	7,093	34,646
Southern and Eastern	324,443	312,032	317,476	+ 5,444	- 6,967	54,475	263,001
Dublin	112,792	109,314	111,251	+ 1,937	- 1,541	19,321	91,930
Mid-East	45,455	43,454	44,093	+ 639	- 1,362	7,424	36,669
Mid-West	41,270	38,849	39,786	+ 937	- 1,484	6,917	32,869
South-East	60,841	58,967	60,237	+ 1,270	- 604	11,055	49,182
South-West	64,085	61,448	62,109	+ 661	- 1,976	9,758	52,351
Total	470,284	451,974	460,323	+ 8,349	- 9,961	80,705	379,618

¹ The composition of the regions is described in the Background Notes.

Table 6 Persons on the Live Register classified by last held occupation

Broad occupational group	July 2011	June 2012	July 2012	Monthly change	Annual change	Under 25 years	25 years & over
Males							
Managers and administrators	10,291	10,213	10,162	- 51	- 129	462	9,700
Professional	13,587	12,404	12,941	+ 537	- 646	1,416	11,525
Associate professional and technical	8,172	7,575	7,652	+ 77	- 520	1,124	6,528
Clerical and secretarial	12,826	12,184	12,666	+ 482	- 160	1,900	10,766
Craft and related	105,048	97,023	96,500	- 523	- 8,548	11,511	84,989
Personal and protective service	18,524	18,533	18,543	+ 10	+ 19	3,076	15,467
Sales	19,170	19,466	19,707	+ 241	+ 537	6,391	13,316
Plant and machine operatives	57,199	55,846	55,742	- 104	- 1,457	7,630	48,112
Other occupation	41,552	40,731	40,856	+ 125	- 696	8,451	32,405
No occupation ¹	11,401	12,736	13,021	+ 285	+ 1,620	6,108	6,913
Total	297,770	286,711	287,790	+ 1,079	- 9,980	48,069	239,721
Females							
Managers and administrators	7,030	6,868	6,897	+ 29	- 133	281	6,616
Professional	16,570	14,702	16,748	+ 2,046	+ 178	1,647	15,101
Associate professional and technical	5,778	5,492	5,634	+ 142	- 144	662	4,972
Clerical and secretarial	37,025	32,781	36,215	+ 3,434	- 810	2,557	33,658
Craft and related	7,523	7,705	7,729	+ 24	+ 206	1,240	6,489
Personal and protective service	34,829	33,795	34,859	+ 1,064	+ 30	7,571	27,288
Sales	31,202	30,480	30,585	+ 105	- 617	8,655	21,930
Plant and machine operatives	16,113	15,896	15,865	- 31	- 248	2,727	13,138
Other occupation	9,864	10,147	10,390	+ 243	+ 526	3,372	7,018
No occupation ¹	6,580	7,397	7,611	+ 214	+ 1,031	3,924	3,687
Total	172,514	165,263	172,533	+ 7,270	+ 19	32,636	139,897
All Persons							
Managers and administrators	17,321	17,081	17,059	- 22	- 262	743	16,316
Professional	30,157	27,106	29,689	+ 2,583	- 468	3,063	26,626
Associate professional and technical	13,950	13,067	13,286	+ 219	- 664	1,786	11,500
Clerical and secretarial	49,851	44,965	48,881	+ 3,916	- 970	4,457	44,424
Craft and related	112,571	104,728	104,229	- 499	- 8,342	12,751	91,478
Personal and protective service	53,353	52,328	53,402	+ 1,074	+ 49	10,647	42,755
Sales	50,372	49,946	50,292	+ 346	- 80	15,046	35,246
Plant and machine operatives	73,312	71,742	71,607	- 135	- 1,705	10,357	61,250
Other occupation	51,416	50,878	51,246	+ 368	- 170	11,823	39,423
No occupation ¹	17,981	20,133	20,632	+ 499	+ 2,651	10,032	10,600
Total	470,284	451,974	460,323	+ 8,349	- 9,961	80,705	379,618

¹ Includes those who never worked and those who have no stated occupation.

Table 7 Persons on the Live Register classified by duration of continuous registration

Duration	July 2011	June 2012	July 2012	Monthly change	Annual change	Under 25 years	25 years & over
Males							
Less than one year	160,329	145,516	146,189	+ 673	- 14,140	28,920	117,269
One year or more	137,441	141,195	141,601	+ 406	+ 4,160	19,149	122,452
Total	297,770	286,711	287,790	+ 1,079	- 9,980	48,069	239,721
Females							
Less than one year	119,893	107,209	114,048	+ 6,839	- 5,845	22,549	91,499
One year or more	52,621	58,054	58,485	+ 431	+ 5,864	10,087	48,398
Total	172,514	165,263	172,533	+ 7,270	+ 19	32,636	139,897
All Persons							
Less than one year	280,222	252,725	260,237	+ 7,512	- 19,985	51,469	208,768
One year or more	190,062	199,249	200,086	+ 837	+ 10,024	29,236	170,850
Total	470,284	451,974	460,323	+ 8,349	- 9,961	80,705	379,618

Table 8 Casual and part-time workers on the Live Register

		Males	Monthly change	Females	Monthly change	All Persons	Monthly change
2010	July	41,624	- 166	37,448	- 1	79,072	- 167
	August	41,162	- 462	37,120	- 328	78,282	- 790
	September	40,399	- 763	36,480	- 640	76,879	- 1,403
	October	40,914	+ 515	37,010	+ 530	77,924	+ 1,045
	November	42,162	+ 1,248	38,046	+ 1,036	80,208	+ 2,284
	December	43,510	+ 1,348	38,548	+ 502	82,058	+ 1,850
2011	January	44,117	+ 607	39,115	+ 567	83,232	+ 1,174
	February	45,086	+ 969	39,973	+ 858	85,059	+ 1,827
	March	45,603	+ 517	40,552	+ 579	86,155	+ 1,096
	April	45,447	- 156	40,147	- 405	85,594	- 561
	May	45,071	- 376	39,862	- 285	84,933	- 661
	June	45,609	+ 538	40,156	+ 294	85,765	+ 832
	July	45,639	+ 30	40,226	+ 70	85,865	+ 100
	August	45,312	- 327	39,984	- 242	85,296	- 569
	September	44,731	- 581	39,286	- 698	84,017	- 1,279
	October	45,234	+ 503	39,795	+ 509	85,029	+ 1,012
	November	45,914	+ 680	40,698	+ 903	86,612	+ 1,583
	December	46,044	+ 130	40,771	+ 73	86,815	+ 203
2012	January	46,256	+ 212	40,773	+ 2	87,029	+ 214
	February	47,038	+ 782	41,176	+ 403	88,214	+ 1,185
	March	47,539	+ 501	41,177	+ 1	88,716	+ 502
	April	47,614	+ 75	40,828	- 349	88,442	- 274
	May	47,626	+ 12	40,438	- 390	88,064	- 378
	June	47,891	+ 265	40,574	+ 136	88,465	+ 401
	July	47,797	- 94	40,244	- 330	88,041	- 424

Table 9 Persons on the Live Register classified by nationality grouping

		Nationality grouping						
		Non-Irish nationals						
		United Kingdom	EU15 excl. Irl. & UK	EU15 to EU27 States	Other	Non-Irish nationals	Irish nationals	All Persons
2010	July	18,979	4,100	41,570	14,563	79,212	387,612	466,824
	August	19,007	4,115	41,154	14,581	78,857	388,066	466,923
	September	18,190	3,902	40,427	13,926	76,445	365,972	442,417
	October	17,715	3,755	40,065	13,100	74,635	354,918	429,553
	November	17,598	3,705	40,728	12,751	74,782	350,220	425,002
	December	17,855	3,704	42,198	12,888	76,645	360,434	437,079
2011	January	18,078	3,793	43,619	13,037	78,527	364,150	442,677
	February	18,065	3,813	44,167	13,117	79,162	365,137	444,299
	March	17,956	3,817	43,722	13,099	78,594	362,599	441,193
	April	18,021	3,729	42,698	13,075	77,523	362,048	439,571
	May	18,075	3,711	41,791	13,401	76,978	363,969	440,947
	June	18,648	3,829	42,013	14,431	78,921	379,027	457,948
	July	19,006	3,872	41,732	14,675	79,285	390,999	470,284
	August	18,925	3,847	41,330	14,893	78,995	390,718	469,713
	September	17,894	3,586	40,000	13,941	75,421	362,020	437,441
	October	17,708	3,545	40,202	13,582	75,037	355,395	430,432
	November	17,648	3,571	40,788	13,512	75,519	354,048	429,567
	December	17,798	3,605	41,263	13,554	76,220	358,564	434,784
2012	January	17,827	3,648	42,831	13,845	78,151	361,438	439,589
	February	17,783	3,685	43,341	13,946	78,755	360,667	439,422
	March	17,521	3,608	43,025	13,926	78,080	355,974	434,054
	April	17,337	3,558	42,268	13,852	77,015	352,986	430,001
	May	17,447	3,551	41,634	14,151	76,783	356,124	432,907
	June	18,054	3,770	41,360	15,072	78,256	373,718	451,974
	July	18,290	3,756	41,167	15,209	78,422	381,901	460,323

Annex - Activation Programmes

The table below contains the end of June 2012 data on the number of people availing of a range of programmes targeted primarily at the long-term unemployed (over 12 months) and other welfare recipients, including Lone Parents.

There were 61,916 people availing of these programmes in June 2012, which is an increase of 7,629 (+14.1%) from the previous year. In June 2011 there were 54,287 people in activation programmes.

Persons on activation programmes are not counted as part of the monthly Live Register.

Live Register Activation Programmes

	June 2011	May 2012	June 2012
Back to Work Schemes			
Back to Work allowance scheme - Employee strand ¹	480	49	44
Back to Work Enterprise allowance scheme -self employed strand	9,601	11,194	11,062
Short-term Enterprise Allowance ²	1,229	1,179	1,175
Total Back to Work payments	11,310	12,422	12,281
Other Activation Programmes			
DSP Part-time Job Incentive	161	193	190
TUS - Community Work Placement Initiative (2011)	0	4,102	4,363
JobBridge (2011)	0	4,872 ³	4,899
Total Other Activation Programmes	161	9,167	9,452
Community Employment Schemes (excluding Supervisors)			
FAS Full Time Training for Unemployed People⁴	9,407	9,833	8,783
Back to Education Courses			
Vocational Training Opportunities Scheme (VTOS) ⁵	N/A	N/A	N/A
Back to Education Allowance (BTEA) ⁶	6,472	18,373	4,855
Total Back to Education Courses	11,472	23,373	9,855
Total Activation Programmes	54,287	76,565	61,916

¹ This scheme was closed to new applications from 1st May 2009.

² This scheme was introduced from 1st May 2009. It provides immediate support for someone in receipt of Jobseekers Benefit who wants to start a business.

³ Revised.

⁴ Specific Skills Training/Local Training initiative/Traineeship/Return to Work. Breakdown became available for April 2012 Live Register release.

⁵ VTOS figures are estimated at 5,000 each year.

⁶ BTEA figures include all schemes but participants from JA & JB are not entitled to BTEA during the summer holidays.

Background Notes

Source and scope of the Live Register The Live Register is compiled from returns made for each local office to the Central Statistics Office by the Department of Social Protection. It comprises persons under 65 years of age in the following classes:

- ◆ All Claimants for Jobseeker's Benefit (JB) excluding systematic short-time workers
- ◆ Applicants for Jobseeker's Allowance (JA) excluding smallholders/farm assists and other self-employed persons
- ◆ Other registrants including applicants for credited Social Welfare contributions but excluding those directly involved in an industrial dispute.

Reference Period The reference periods for the Live Register results are as follows:
 July 2012 – 30th June to 27th July 2012
 July 2011 – 25th June to 29th July 2011

Unemployment statistics The Live Register is not designed to measure unemployment. It includes part-time (those who work up to three days a week), seasonal and casual workers entitled to Jobseeker's Allowance or Jobseeker's Benefit. **Unemployment is measured by the Quarterly National Household Survey** (formerly the Annual Labour Force Survey).

Standardised unemployment rates The Standardised Unemployment Rate (SUR) series in Table 3 is based on the estimated number of persons unemployed expressed as a percentage of the total economically active population (i.e. the Labour Force), using internationally comparable definitions of employment and unemployment, as recommended by the International Labour Office.

Official estimates of the number of persons unemployed and the unemployment rate are produced from the Quarterly National Household Survey (QNHS). The QNHS is the only source of information on unemployment and employment which can apply standard International Labour Organisation (ILO) methodology to the estimation of these key indicators. The background notes of the QNHS release contain more information on the ILO criteria. Given the timelag required to produce estimates from the QNHS and the quarterly periodicity, short-term trends in the Live Register are used to estimate more up-to-date monthly unemployment rates.

The seasonally adjusted QNHS estimate of unemployment is used as a benchmark for February (Quarter 1 QNHS), May (Quarter 2 QNHS), August (Quarter 3 QNHS) and November (Quarter 4 QNHS) each year. The latest QNHS benchmark is updated using the trend in the seasonally adjusted Live Register to allow the estimation of the SUR. Once new QNHS data is available it is used to revise the SUR series. The assumption underlying this methodology is that over short periods the change in the seasonally adjusted Live Register will represent accurately the change in unemployment which will be seen from the QNHS. This methodology has been used since the QNHS was first initiated at the end of 1997.

QNHS The Quarterly National Household Survey (QNHS), which began in September 1997, replaced the Labour Force Survey and provides quarterly estimates of the unemployment rate. Up to and including the fourth quarter of 2008 the QNHS operated on a seasonal quarter basis. As of the first quarter 2009 the QNHS is now undertaken on a calendar quarter basis.

The calendar reference quarters for survey results are:
 Q1 - January to March, Q2 - April to June, Q3 - July to September and Q4 - October to December.

The calendar quarter estimates for Q1 2012 (adjusted for seasonality) are:

	Q1	Q2	Q3	Q4
	%	%	%	%
2007	4.4	4.5	4.5	4.8
2008	4.8	5.6	6.9	8.0
2009	10.1	11.9	12.5	12.8
2010	12.9	13.6	13.6	14.4
2011	14.1	14.3	14.6	14.5
2012	14.8			

Seasonal adjustment Since January 2011 the seasonal adjustment of the Live Register is completed by applying the X-12-ARIMA model, developed by the U.S. Census Bureau. Seasonal adjustment is conducted using the indirect approach, where each individual series is independently adjusted (male under 25 years, female under 25 years, male 25 years and over and female 25 years and over). To preserve consistency between the individual and aggregate series, the series for gender, age group and total Live Register are then created from these four component series.

The X-12 ARIMA method has the X-11 moving averages process at its core, but builds on this by providing options for pre-treating the series using a regARIMA approach for prior adjustment and series extension. In essence this methodology will estimate seasonal factors while taking account of temporary changes, outliers, level shifts and calendar effects (e.g timing of Easter).

All Live Register series are updated monthly with the latest three years of seasonally adjusted data as part of the concurrent approach. The comprehensive annual review contains revisions to the entire series. Revisions to the series are typically very minor in scale.

For additional information on the use of X-12-ARIMA see detailed note in the January 2011 Live Register release.

Jobseeker's Benefit Duration Prior to 19 January 2004 Jobseeker's Benefit was payable for **15 months** (390 days).

From 19 January 2004, Jobseeker's Benefit could be paid for a maximum of **15 months** (390 days) to people who had at least 260 paid PRSI contributions. Jobseeker's Benefit could be paid for a maximum of **12 months** (312 days) to people who had less than 260 paid contributions. (Refers to new claims).

Since 15 October 2008, Jobseeker's Benefit can be paid for a maximum of **12 months** (312 days) to people who have at least 260 paid PRSI contributions. Jobseeker's Benefit can be paid for a maximum of **9 months** (234 days) to people who have less than 260 paid contributions. (Refers to new claims).

Live Register Flows Live Register flows data is sourced from information collected by the Department of Social Protection. The aggregate of new registrations for each month is used in conjunction with the net change over the same period to calculate the outflow from the register. A new registration is defined as anybody on the Live Register in a particular month who was not on it the previous month. Inflows and outflows published in this release do not take account of inter-scheme activity within the Live Register. For example, if a claimant exhausts his/her entitlement to JB and opens a new JA claim this is counted as an outflow in JB and an inflow in JA.

Live Register Area Analysis The basis of the area analysis in Live Register statistics is the Department of Social Protection local office of registration. The areas served by Local Employment Offices do not correspond to specific geographic boundaries. Therefore, registrants at a given local office do not necessarily come from a particular region or area which can be precisely delineated e.g. data for the Cork City cal Office of Registration refers to all persons signing on in Cork City but may include persons not resident in Cork City. **The latest available Live Register data by Province, County and Local Office of Registration will be released on the CSO website through the CSO Main Data Dissemination Service, StatBank one day after the publication of this release.**

NUTS2 and NUTS3 regions The Regional classifications are based on the NUTS (Nomenclature of Territorial Units) classification used by Eurostat. The NUTS3 regions correspond to the eight Regional Authorities established under the Local Government Act, 1991 (Regional Authorities) (Establishment) Order, 1993, which came into operation on 1 January 1994. The NUTS2 regions, which were proposed by Government and agreed by Eurostat in 1999, are groupings of the NUTS3 regions.

Border, Midland and Western NUTS2 Region

Border Cavan
Donegal
Leitrim
Louth
Monaghan
Sligo

Midland Laois
Longford
Offaly
Westmeath

West Galway City
Galway County
Mayo
Roscommon

Southern and Eastern NUTS2 Region

Dublin Dublin City
Dun Laoghaire-Rathdown
Fingal
South Dublin

Mid-East Kildare
Meath
Wicklow

Mid-West Clare
Limerick City
Limerick County
North Tipperary

South-East Carlow
Kilkenny
South Tipperary
Waterford City
Waterford County
Wexford

South-West Cork City
Cork County
Kerry

Occupations Live Register occupational data is sourced from information collected by the Department of Social Protection on the most recent occupation of claimants when they sign on the Live Register. The classification used is based on the UK Standard Occupational Classification (SOC). “No occupation” is an additional category and includes those who have never worked and those who have no stated occupation.

Age by Duration Analysis Duration of continuous registration on the Live Register was previously compiled on a half-yearly basis (April and October). The Live Register Age by Duration release has now been replaced by a monthly table in this release. The bi-annual release related to the second last Friday of the reference month but the monthly age by duration data since October 2009 corresponds to the end of month Live Register totals. **Detailed tables relating to regional and scheme data will continue to be made available on the CSO website through the CSO Main Data Dissemination Service, StatBank on a bi-annual basis.**

Casual and part-time workers The casual and part-time workers’ figure is based on data supplied by the Department of Social Protection. People may apply for Jobseeker’s Benefit or Jobseeker’s Allowance if they only work for part of a week and be included on the Live Register.

Nationality Data in the nationality grouping table is sourced from information collected by the Department of Social Protection on the nationality of claimants when they first sign on the Live Register.

CSO StatBank More detailed information on geographic breakdowns of the Live Register and duration of continuous registration along with all Live Register published data can be found on the CSO Main Data Dissemination Service, StatBank on the CSO website

<http://www.cso.ie/>

Go to:

- > Databases
- > StatBank (CSO Main Dissemination Service)
- > Labour Market and Earnings
- > Labour Force
- > Live Register

or click

<http://cso.ie/shorturl.aspx/39>

For further information or assistance use the contact details on the front page of the release or e-mail labour@cso.ie