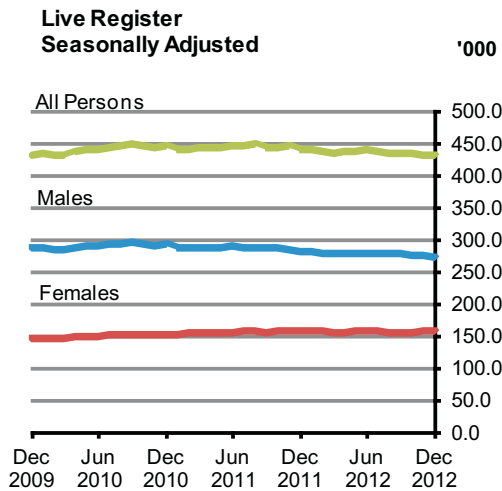




Live Register December 2012



	Live Register Total	Seasonally Adjusted	Standardised Unemployment Rate (SUR)%
December 2011	434,784	442,400	14.8
November 2012	417,277	432,300	14.6
December 2012	423,733	430,900	14.6
			Percentage Points
Change in month	-	- 1,400	0.0
Change in year	- 11,051	-	-0.2

Seasonally adjusted Live Register shows slight decrease in December

On a seasonally adjusted basis the Live Register total recorded a monthly decrease of 1,400 in December 2012, bringing the seasonally adjusted total to 430,900. *See table 2a.*

The standardised unemployment rate (SUR) in December 2012 was 14.6%, unchanged from November 2012. The seasonally adjusted unemployment rate from the most recent Quarterly National Household Survey (QNHS) was 14.8% in the third quarter of 2012. The annual average SUR for 2012 was 14.8%, which compares with 14.6% in 2011. *See table 3.*

In unadjusted terms there were 423,733 people signing on the Live Register in December 2012. This represents an annual decrease of 11,051 (-2.5%). While the trend in the overall Live Register continues to be one of movement within a small range, annual decreases were recorded in all months of 2012. *See table 1a.*

Other features include:

- ◆ On a seasonally adjusted basis the Live Register showed a monthly decrease of 1,800 males in December 2012, while females increased by 400 over the same period. *See table 2a.*
- ◆ The number of male claimants decreased by 9,837 (-3.5%) to 269,886 over the year and female claimants decreased by 1,214 (-0.8%) to 153,847. This compares with a decrease of 9,079 (-3.1%) to 279,723 for males and an increase of 6,784 (+4.6%) to 155,061 for females in the year to December 2011. *See table 1a.*

The Live Register is not designed to measure unemployment. It includes part-time workers (those who work up to three days a week), seasonal and casual workers entitled to Jobseeker's Benefit or Allowance. Unemployment is measured by the Quarterly National Household Survey and the latest estimated number of persons unemployed as of the third quarter of 2012 was 324,500.

Published by the Central Statistics Office, Ireland.

Ardee Road
Dublin 6
Ireland

Skehard Road
Cork
Ireland

LoCall: 1890 313 414 (ROI)
0870 876 0256 (UK/Nl)

Tel: +353 1 498 4000
Fax: +353 1 498 4229

Tel: +353 21 453 5000
Fax: +353 21 453 5492

Both offices may be contacted through any of these telephone numbers.

CSO on the Web: www.cso.ie
and go to
Labour Market and Earnings: Labour Market

Director General: Pádraig Dalton

Enquiries:

Live Register statistics
General queries

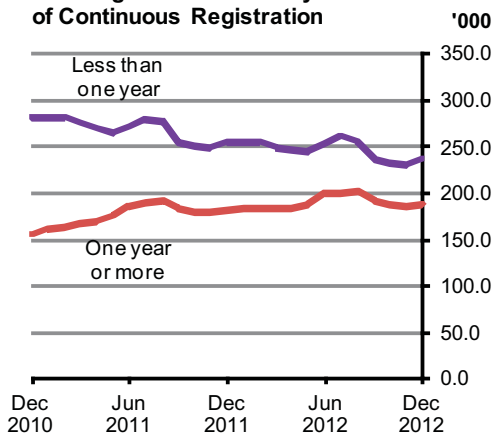
Live Register Section, ext 5491
Email labour@cso.ie
Information Section, ext 5021
information@cso.ie

© Central Statistics Office
The contents of this release may be quoted provided the source is given clearly and accurately. Reproduction for own or internal use is permitted.

On-line ISSN 2009-535X

For more information contact Sabrina Bowen at 021 453 5151, Karen Desmond at 021 453 5534 or Brendan Curtin at 021 453 5577.

Live Register classified by Duration of Continuous Registration



Live Register duration of continuous registration

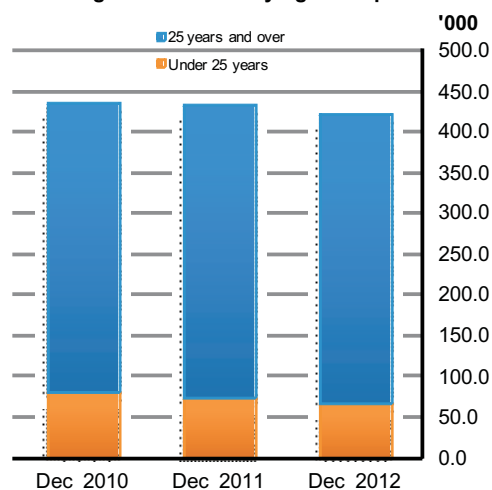
The number of long term claimants on the Live Register in December 2012 was 187,144. The number of male long term claimants increased by 1,089 (+0.8%) in the year to December 2012, while the comparable increase for females was 5,257 (+10.6%) giving an overall annual increase of 6,346 (+3.5%) in the number of long term claimants. *See table 7 and graph opposite.*

In December 55.8% (236,589) of all claimants on the Live Register were short term claimants. The comparable figure for December 2011 was 58.4% (253,986). The annual fall of 17,397 (-6.8%) in the number of short term claimants consisted of a decrease of 10,926 (-7.4%) in the number of male short term claimants and a decrease of 6,471 (-6.1%) in female short term claimants.

Live Register casual and part-time workers

There were 88,069 casual and part-time workers on the Live Register in December, which represents 20.8% of the total Live Register. This compares with 20.0% one year earlier when there were 86,815 casual and part-time workers on the Live Register. In the year to December 2012 the number of casual and part-time workers increased by 1,254 (+1.4%), with the number of males increasing by 2,038 (+4.4%) and the number of females decreasing by 784 (-1.9%). *See table 8.*

Live Register classified by Age Group



Live Register age groups

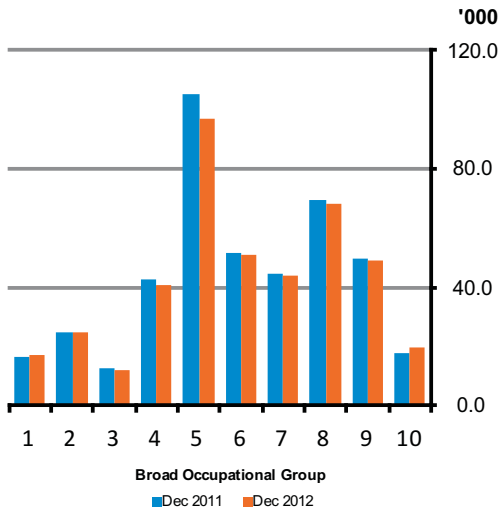
In the year to December 2012 the number of persons aged 25 and over on the Live Register decreased by 3,649 (-1.0%), and the number of persons aged under 25 decreased by 7,402 (-10.0%). Annual decreases in persons aged under 25 have occurred in all months since July 2010. The percentage of persons aged under 25 on the Live Register now stands at 15.8% for December 2012, down from 17.1% in December 2011 and 18.6% in December 2010. *See tables 1b and 1c and graph opposite.*

Live Register new registrants

There were 26,829 new registrants on the Live Register in December 2012, consisting of 12,373 JB claims, 13,190 JA claims and 1,266 'Other Registrants'. Males accounted for 56.4% (15,140) and females 43.6% (11,689) of all new registrants. On average 3,785 male and 2,922 female new registrants joined the Live Register each week of the month. The difference between the number of new registrants on the Live Register and the change in the total number on the Live Register is accounted for by closed claims and movements between schemes. *See table 4.*

Data on Activation Programmes for November 2012 is included in the Annex of this release. Persons participating in Activation Programmes are not included in the Live Register count.

Live Register classified by Last Held Occupation



KEY

- 1- Managers and administrators
- 2- Professional
- 3- Associate professional and technical
- 4- Clerical and secretarial
- 5- Craft and related
- 6- Personal and protective service
- 7- Sales
- 8- Plant and machine operatives
- 9- Other occupation
- 10- No occupation

Live Register by other classifications

Bearing in mind the overall annual decrease of 2.5% in the number of people on the Live Register in December the main other points which can be noted include:

- ◆ An annual increase of 1.4% brought the total number of Jobseeker's Allowance (JA) claimants to 305,634 in December 2012, while Jobseeker's Benefit (JB) claimants decreased to 84,591 (-17.6%) over the same period. As a result JA claimants account for 72.1% of all persons on the Live Register in December 2012 compared with 69.3% a year earlier. *See table 1a.*
- ◆ Annual decreases occurred in seven of the eight NUTS 3 regions with the largest percentage decrease in the Mid-West region (-4.6%). The only percentage increase occurred in the Midland region (+0.2%). *See table 5.*
- ◆ *Craft and related* (22.9%) remained the largest occupational group on the Live Register in December, despite the fact that the number in the group fell over the year by 7,972 (-7.6%) to 97,208. The second largest annual percentage decrease was in the *Clerical and secretarial* group (-3.9%). *See table 6 and graph opposite.*
- ◆ In December Irish nationals accounted for 82.4% (349,194) of the number of persons on the Live Register. Of the 74,539 non-Irish nationals, the largest constituent group on the Live Register was nationals from the EU15 to EU27 States (40,491), followed by the UK (16,806). *See table 9*

¹ While the 'No Occupation' group is excluded from the analysis its subtotals are included in the relevant calculations presented in the text.

Table 1a Total persons on the Live Register

Category	December 2011	November 2012	December 2012		Monthly change		Annual change
Males							
JB Claims	53,892	43,211	44,433	+	1,222	-	9,459
JA Applications	214,817	211,367	213,554	+	2,187	-	1,263
Other Registrants	11,014	11,792	11,899	+	107	+	885
Total	279,723	266,370	269,886	+	3,516	-	9,837
Females							
JB Claims	48,771	38,109	40,158	+	2,049	-	8,613
JA Applications	86,636	91,463	92,080	+	617	+	5,444
Other Registrants	19,654	21,335	21,609	+	274	+	1,955
Total	155,061	150,907	153,847	+	2,940	-	1,214
All Persons							
JB Claims	102,663	81,320	84,591	+	3,271	-	18,072
JA Applications	301,453	302,830	305,634	+	2,804	+	4,181
Other Registrants	30,668	33,127	33,508	+	381	+	2,840
Total	434,784	417,277	423,733	+	6,456	-	11,051

Table 1b Persons under 25 years of age on the Live Register

Category	December 2011	November 2012	December 2012		Monthly change		Annual change
Males							
JB Claims	4,276	2,911	2,889	-	22	-	1,387
JA Applications	41,498	37,713	37,784	+	71	-	3,714
Other Registrants	102	90	83	-	7	-	19
Total	45,876	40,714	40,756	+	42	-	5,120
Females							
JB Claims	3,872	2,623	2,625	+	2	-	1,247
JA Applications	24,385	23,604	23,350	-	254	-	1,035
Other Registrants	213	228	213	-	15	-	0
Total	28,470	26,455	26,188	-	267	-	2,282
All Persons							
JB Claims	8,148	5,534	5,514	-	20	-	2,634
JA Applications	65,883	61,317	61,134	-	183	-	4,749
Other Registrants	315	318	296	-	22	-	19
Total	74,346	67,169	66,944	-	225	-	7,402

Table 1c Persons 25 years of age and over on the Live Register

Category	December 2011	November 2012	December 2012		Monthly change		Annual change
Males							
JB Claims	49,616	40,300	41,544	+	1,244	-	8,072
JA Applications	173,319	173,654	175,770	+	2,116	+	2,451
Other Registrants	10,912	11,702	11,816	+	114	+	904
Total	233,847	225,656	229,130	+	3,474	-	4,717
Females							
JB Claims	44,899	35,486	37,533	+	2,047	-	7,366
JA Applications	62,251	67,859	68,730	+	871	+	6,479
Other Registrants	19,441	21,107	21,396	+	289	+	1,955
Total	126,591	124,452	127,659	+	3,207	+	1,068
All Persons							
JB Claims	94,515	75,786	79,077	+	3,291	-	15,438
JA Applications	235,570	241,513	244,500	+	2,987	+	8,930
Other Registrants	30,353	32,809	33,212	+	403	+	2,859
Total	360,438	350,108	356,789	+	6,681	-	3,649

Table 2a Total persons on the Live Register - Unadjusted and Seasonally Adjusted

	Month	Unadjusted Series			Seasonally Adjusted Series ¹		
		Males	Females	All Persons	Males	Females	All Persons
2010	December	288,800	148,300	437,100	292,500	153,000	445,400
2011	January	292,000	150,700	442,700	288,800	153,500	442,300
	February	291,800	152,500	444,300	287,800	154,300	442,100
	March	290,200	151,000	441,200	289,000	155,400	444,400
	April	286,700	152,800	439,600	287,000	155,700	442,600
	May	288,300	152,700	440,900	289,000	155,800	444,800
	June	296,100	161,800	457,900	289,700	156,200	445,900
	July	297,800	172,500	470,300	289,400	157,600	447,000
	August	296,900	172,900	469,700	289,100	160,000	449,100
	September	282,000	155,500	437,400	286,900	156,800	443,600
	October	277,600	152,800	430,400	286,900	158,300	445,200
	November	276,500	153,000	429,600	286,000	159,800	445,800
	December	279,700	155,100	434,800	283,100	159,300	442,400
2012	January	283,900	155,700	439,600	281,600	158,500	440,100
	February	283,500	156,000	439,400	280,700	157,900	438,600
	March	280,200	153,800	434,100	279,300	157,200	436,500
	April	277,400	152,600	430,000	279,600	157,000	436,600
	May	278,800	154,100	432,900	279,700	157,500	437,200
	June	286,700	165,300	452,000	280,200	159,600	439,700
	July	287,800	172,500	460,300	279,300	157,700	437,000
	August	286,600	169,600	456,300	278,500	157,000	435,600
	September	273,800	155,500	429,300	278,000	157,000	435,100
	October	268,500	151,600	420,200	276,900	157,000	433,900
	November	266,400	150,900	417,300	275,000	157,300	432,300
	December	269,900	153,800	423,700	273,200	157,700	430,900

¹ Table contains revised figures.**Table 2b Persons under 25 years of age on the Live Register - Unadjusted and Seasonally Adjusted**

	Month	Unadjusted Series			Seasonally Adjusted Series ¹		
		Males	Females	All Persons	Males	Females	All Persons
2010	December	52,100	29,200	81,300	53,600	31,500	85,100
2011	January	52,200	30,000	82,200	52,600	31,300	83,900
	February	51,900	30,200	82,100	51,900	31,200	83,100
	March	51,500	29,800	81,400	51,800	31,500	83,400
	April	49,900	29,500	79,400	51,500	31,400	82,900
	May	50,400	30,500	81,000	51,200	31,400	82,700
	June	53,300	33,700	87,000	50,900	31,200	82,100
	July	53,900	35,400	89,300	50,500	31,200	81,700
	August	53,300	35,500	88,800	49,900	31,200	81,100
	September	49,200	31,700	80,900	49,000	30,900	79,900
	October	47,400	30,300	77,700	49,100	31,100	80,100
	November	46,200	29,400	75,600	48,600	31,300	79,900
	December	45,900	28,500	74,300	47,300	30,600	77,900
2012	January	46,500	28,800	75,300	47,000	30,100	77,100
	February	46,200	28,700	74,900	46,500	29,800	76,200
	March	45,200	27,800	73,000	45,800	29,300	75,000
	April	43,900	27,000	70,900	45,500	29,100	74,600
	May	44,500	28,200	72,600	45,300	29,000	74,300
	June	47,600	31,500	79,100	45,300	29,100	74,400
	July	48,100	32,600	80,700	44,900	28,800	73,700
	August	47,900	32,500	80,400	44,600	28,500	73,200
	September	44,400	29,300	73,700	44,200	28,500	72,600
	October	42,200	27,700	69,900	43,600	28,300	71,900
	November	40,700	26,500	67,200	42,800	28,200	71,000
	December	40,800	26,200	66,900	42,100	28,100	70,300

¹ Table contains revised figures.

Table 2c Persons 25 years of age and over on the Live Register - Unadjusted and Seasonally Adjusted

	Month	Unadjusted Series			Seasonally Adjusted Series ¹		
		Males	Females	All Persons	Males	Females	All Persons
2010	December	236,700	119,100	355,800	238,800	121,500	360,300
2011	January	239,800	120,700	360,400	236,200	122,200	358,400
	February	240,000	122,300	362,200	235,900	123,000	359,000
	March	238,700	121,100	359,800	237,200	123,900	361,000
	April	236,800	123,400	360,200	235,500	124,300	359,800
	May	237,900	122,100	360,000	237,800	124,400	362,200
	June	242,800	128,100	370,900	238,800	125,000	363,800
	July	243,800	137,100	381,000	238,900	126,300	365,200
	August	243,600	137,400	380,900	239,100	128,800	368,000
	September	232,800	123,700	356,600	237,800	125,900	363,800
	October	230,200	122,500	352,700	237,800	127,200	365,000
	November	230,300	123,700	354,000	237,400	128,500	365,900
	December	233,800	126,600	360,400	235,800	128,700	364,500
2012	January	237,400	126,900	364,200	234,600	128,300	362,900
	February	237,200	127,200	364,500	234,300	128,100	362,400
	March	235,100	126,000	361,100	233,500	127,900	361,500
	April	233,500	125,600	359,100	234,100	127,900	362,000
	May	234,300	126,000	360,300	234,400	128,500	362,900
	June	239,100	133,800	372,900	234,800	130,500	365,300
	July	239,700	139,900	379,600	234,400	128,900	363,300
	August	238,800	137,100	375,900	233,900	128,500	362,400
	September	229,400	126,300	355,600	233,800	128,600	362,400
	October	226,300	123,900	350,300	233,300	128,700	362,000
	November	225,700	124,500	350,100	232,300	129,100	361,300
	December	229,100	127,700	356,800	231,000	129,600	360,600

¹ Table contains revised figures.

Table 3 Seasonally Adjusted Standardised Unemployment Rates (SUR)¹

Month	2007	2008	2009	2010	2011	2012
	%	%	%	%	%	%
January	4.5	4.9	9.5	13.1	14.5	14.9
February ²	4.5	5.0	10.2	13.0	14.3	15.0
March	4.5	5.3	10.9	13.2	14.4	14.9
April	4.6	5.4	11.5	13.5	14.4	14.9
May ²	4.7	5.7	12.1	13.8	14.5	14.9
June	4.7	6.0	12.3	13.7	14.6	14.9
July	4.6	6.5	12.5	13.8	14.7	14.8
August ²	4.6	6.9	12.6	13.9	14.9	14.8 ³
September	4.7	7.2	12.9	14.3	14.7	14.8
October	4.8	7.7	13.0	14.5	14.7	14.7
November ²	4.9	8.1	13.0	14.7	14.8	14.6
December	4.9	8.6	13.0	14.6	14.8	14.6
Annual average	4.7	6.4	12.0	13.8	14.6	14.8

¹ Table contains revised figures. See Background Notes.

² Benchmark Quarterly National Household Survey (QNHS) calendar quarter estimates.

³ The latest QNHS estimate of the unemployment rate (adjusted for seasonality) is: July -Sept 2012, 14.8%.

Table 4 Summary of flows¹ on and off the Live Register

		Number of Weeks	Males				Females			
			Live Register	New Regis- trations	Outflow (derived)	Average Weekly Change	Live Register	New Regis- trations	Outflow (derived)	Average Weekly Change
JB Claims										
2011	December	5	53,892	9,662	8,106	+ 311	48,771	8,745	6,852	+ 379
2012	January	4	55,964	11,669	9,597	+ 518	48,369	10,242	10,644	- 101
	February	4	55,317	8,814	9,461	- 162	47,937	8,136	8,568	- 108
	March	5	53,266	9,215	11,266	- 410	45,706	7,103	9,334	- 446
	April	4	51,678	7,471	9,059	- 397	44,534	9,252	10,424	- 293
	May	4	50,379	6,629	7,928	- 325	43,610	5,858	6,782	- 231
	June	5	49,815	8,362	8,926	- 113	46,974	10,633	7,269	+ 673
	July	4	49,072	7,158	7,901	- 186	50,963	10,745	6,756	+ 997
	August	5	47,230	7,278	9,120	- 368	46,824	6,837	10,976	- 828
	September	4	44,251	6,226	9,205	- 745	39,412	5,752	13,164	- 1,853
	October	4	43,519	7,258	7,990	- 183	38,099	5,850	7,163	- 328
	November	5	43,211	9,493	9,801	- 62	38,109	10,073	10,063	+ 2
	December	4	44,433	6,217	4,995	+ 306	40,158	6,156	4,107	+ 512
JA Applications										
2011	December	5	214,817	11,762	10,230	+ 306	86,636	5,948	5,918	+ 6
2012	January	4	216,706	11,651	9,762	+ 472	87,494	6,424	5,566	+ 215
	February	4	216,743	11,044	11,007	+ 9	87,940	6,345	5,899	+ 112
	March	5	215,295	12,102	13,550	- 290	87,559	6,694	7,075	- 76
	April	4	213,894	9,275	10,676	- 350	87,270	5,333	5,622	- 72
	May	4	216,412	10,185	7,667	+ 630	89,579	6,427	4,118	+ 577
	June	5	224,793	15,411	7,030	+ 1,676	96,660	10,843	3,762	+ 1,416
	July	4	226,574	11,278	9,497	+ 445	99,428	8,174	5,406	+ 692
	August	5	227,251	12,667	11,990	+ 135	100,535	8,008	6,901	+ 221
	September	4	217,633	11,798	21,416	- 2,405	94,578	7,474	13,431	- 1,489
	October	4	213,313	11,666	15,986	- 1,080	92,280	7,001	9,299	- 575
	November	5	211,367	13,524	15,470	- 389	91,463	8,166	8,983	- 163
	December	4	213,554	8,456	6,269	+ 547	92,080	4,734	4,117	+ 154
Other Registrants										
2011	December	5	11,014	689	580	+ 22	19,654	1,125	1,028	+ 19
2012	January	4	11,223	734	525	+ 52	19,833	1,309	1,130	+ 45
	February	4	11,390	595	428	+ 42	20,095	1,168	906	+ 66
	March	5	11,682	825	533	+ 58	20,546	1,295	844	+ 90
	April	4	11,836	569	415	+ 39	20,789	1,183	940	+ 61
	May	4	11,972	500	364	+ 34	20,955	806	640	+ 42
	June	5	12,103	651	520	+ 26	21,629	1,509	835	+ 135
	July	4	12,144	565	524	+ 10	22,142	1,707	1,194	+ 128
	August	5	12,144	546	546	0	22,272	1,370	1,240	+ 26
	September	4	11,905	493	732	- 60	21,556	976	1,692	- 179
	October	4	11,713	557	749	- 48	21,248	937	1,245	- 77
	November	5	11,792	733	654	+ 16	21,335	1,403	1,316	+ 17
	December	4	11,899	467	360	+ 27	21,609	799	525	+ 69

¹ Flow analysis: inflows and outflows published in this table do not take account of inter-scheme activity within the Live Register. For example, if a claimant exhausts his/her entitlement to JB and opens a new JA claim this is counted as an outflow in JB and an inflow in JA.

Table 5 Persons on the Live Register classified by region

NUTS2 and NUTS3 Regions ¹	December 2011	November 2012	December 2012	Monthly change	Annual change	Under 25 years	25 years & over
Males							
Border, Midland and Western	85,614	81,686	82,951	+ 1,265	- 2,663	13,079	69,872
Border	39,327	37,378	37,832	+ 454	- 1,495	6,234	31,598
Midland	21,418	20,748	21,080	+ 332	- 338	3,269	17,811
West	24,869	23,560	24,039	+ 479	- 830	3,576	20,463
Southern and Eastern	194,109	184,684	186,935	+ 2,251	- 7,174	27,677	159,258
Dublin	67,634	65,396	65,769	+ 373	- 1,865	9,992	55,777
Mid-East	26,664	25,155	25,633	+ 478	- 1,031	3,735	21,898
Mid-West	24,195	22,640	22,964	+ 324	- 1,231	3,489	19,475
South-East	36,983	35,309	35,954	+ 645	- 1,029	5,634	30,320
South-West	38,633	36,184	36,615	+ 431	- 2,018	4,827	31,788
Total	279,723	266,370	269,886	+ 3,516	- 9,837	40,756	229,130
Females							
Border, Midland and Western	48,878	48,076	49,070	+ 994	+ 192	8,784	40,286
Border	22,227	21,565	21,863	+ 298	- 364	3,993	17,870
Midland	11,848	12,074	12,253	+ 179	+ 405	2,410	9,843
West	14,803	14,437	14,954	+ 517	+ 151	2,381	12,573
Southern and Eastern	106,183	102,831	104,777	+ 1,946	- 1,406	17,404	87,373
Dublin	34,635	34,217	34,555	+ 338	- 80	5,898	28,657
Mid-East	15,225	14,765	15,194	+ 429	- 31	2,345	12,849
Mid-West	14,082	13,242	13,564	+ 322	- 518	2,301	11,263
South-East	20,317	19,652	20,070	+ 418	- 247	3,615	16,455
South-West	21,924	20,955	21,394	+ 439	- 530	3,245	18,149
Total	155,061	150,907	153,847	+ 2,940	- 1,214	26,188	127,659
All Persons							
Border, Midland and Western	134,492	129,762	132,021	+ 2,259	- 2,471	21,863	110,158
Border	61,554	58,943	59,695	+ 752	- 1,859	10,227	49,468
Midland	33,266	32,822	33,333	+ 511	+ 67	5,679	27,654
West	39,672	37,997	38,993	+ 996	- 679	5,957	33,036
Southern and Eastern	300,292	287,515	291,712	+ 4,197	- 8,580	45,081	246,631
Dublin	102,269	99,613	100,324	+ 711	- 1,945	15,890	84,434
Mid-East	41,889	39,920	40,827	+ 907	- 1,062	6,080	34,747
Mid-West	38,277	35,882	36,528	+ 646	- 1,749	5,790	30,738
South-East	57,300	54,961	56,024	+ 1,063	- 1,276	9,249	46,775
South-West	60,557	57,139	58,009	+ 870	- 2,548	8,072	49,937
Total	434,784	417,277	423,733	+ 6,456	- 11,051	66,944	356,789

¹ The composition of the regions is described in the Background Notes.

Table 6 Persons on the Live Register classified by last held occupation

Broad occupational group	December 2011	November 2012	December 2012	Monthly change	Annual change	Under 25 years	25 years & over
Males							
Managers and administrators	9,960	9,826	10,069	+ 243	+ 109	395	9,674
Professional	11,819	11,146	11,401	+ 255	- 418	1,013	10,388
Associate professional and technical	7,143	6,908	6,952	+ 44	- 191	902	6,050
Clerical and secretarial	11,433	10,866	11,155	+ 289	- 278	1,443	9,712
Craft and related	97,890	88,790	89,840	+ 1,050	- 8,050	9,372	80,468
Personal and protective service	18,464	18,006	18,271	+ 265	- 193	2,779	15,492
Sales	17,017	17,103	17,154	+ 51	+ 137	4,967	12,187
Plant and machine operatives	54,383	52,562	53,421	+ 859	- 962	6,760	46,661
Other occupation	40,171	38,798	39,113	+ 315	- 1,058	7,465	31,648
No occupation ¹	11,443	12,365	12,510	+ 145	+ 1,067	5,660	6,850
Total	279,723	266,370	269,886	+ 3,516	- 9,837	40,756	229,130
Females							
Managers and administrators	6,639	6,660	6,898	+ 238	+ 259	209	6,689
Professional	13,080	12,846	13,285	+ 439	+ 205	1,062	12,223
Associate professional and technical	5,214	5,196	5,231	+ 35	+ 17	520	4,711
Clerical and secretarial	31,183	28,442	29,781	+ 1,339	- 1,402	1,898	27,883
Craft and related	7,290	7,282	7,368	+ 86	+ 78	1,074	6,294
Personal and protective service	33,276	31,978	32,562	+ 584	- 714	6,295	26,267
Sales	27,652	27,064	26,895	- 169	- 757	6,430	20,465
Plant and machine operatives	15,049	14,695	15,043	+ 348	- 6	2,364	12,679
Other occupation	9,364	9,546	9,593	+ 47	+ 229	2,842	6,751
No occupation ¹	6,314	7,198	7,191	- 7	+ 877	3,494	3,697
Total	155,061	150,907	153,847	+ 2,940	- 1,214	26,188	127,659
All Persons							
Managers and administrators	16,599	16,486	16,967	+ 481	+ 368	604	16,363
Professional	24,899	23,992	24,686	+ 694	- 213	2,075	22,611
Associate professional and technical	12,357	12,104	12,183	+ 79	- 174	1,422	10,761
Clerical and secretarial	42,616	39,308	40,936	+ 1,628	- 1,680	3,341	37,595
Craft and related	105,180	96,072	97,208	+ 1,136	- 7,972	10,446	86,762
Personal and protective service	51,740	49,984	50,833	+ 849	- 907	9,074	41,759
Sales	44,669	44,167	44,049	- 118	- 620	11,397	32,652
Plant and machine operatives	69,432	67,257	68,464	+ 1,207	- 968	9,124	59,340
Other occupation	49,535	48,344	48,706	+ 362	- 829	10,307	38,399
No occupation ¹	17,757	19,563	19,701	+ 138	+ 1,944	9,154	10,547
Total	434,784	417,277	423,733	+ 6,456	- 11,051	66,944	356,789

¹ Includes those who never worked and those who have no stated occupation.

Table 7 Persons on the Live Register classified by duration of continuous registration

Duration	December 2011	November 2012	December 2012	Monthly change	Annual change	Under 25 years	25 years & over
Males							
Less than one year	148,612	134,685	137,686	+ 3,001	- 10,926	25,040	112,646
One year or more	131,111	131,685	132,200	+ 515	+ 1,089	15,716	116,484
Total	279,723	266,370	269,886	+ 3,516	- 9,837	40,756	229,130
Females							
Less than one year	105,374	96,030	98,903	+ 2,873	- 6,471	18,172	80,731
One year or more	49,687	54,877	54,944	+ 67	+ 5,257	8,016	46,928
Total	155,061	150,907	153,847	+ 2,940	- 1,214	26,188	127,659
All Persons							
Less than one year	253,986	230,715	236,589	+ 5,874	- 17,397	43,212	193,377
One year or more	180,798	186,562	187,144	+ 582	+ 6,346	23,732	163,412
Total	434,784	417,277	423,733	+ 6,456	- 11,051	66,944	356,789

Table 8 Casual and part-time workers on the Live Register

		Males	Monthly change	Females	Monthly change	All Persons	Monthly change
2010	December	43,510	+ 1,348	38,548	+ 502	82,058	+ 1,850
2011	January	44,117	+ 607	39,115	+ 567	83,232	+ 1,174
	February	45,086	+ 969	39,973	+ 858	85,059	+ 1,827
	March	45,603	+ 517	40,552	+ 579	86,155	+ 1,096
	April	45,447	- 156	40,147	- 405	85,594	- 561
	May	45,071	- 376	39,862	- 285	84,933	- 661
	June	45,609	+ 538	40,156	+ 294	85,765	+ 832
	July	45,639	+ 30	40,226	+ 70	85,865	+ 100
	August	45,312	- 327	39,984	- 242	85,296	- 569
	September	44,731	- 581	39,286	- 698	84,017	- 1,279
	October	45,234	+ 503	39,795	+ 509	85,029	+ 1,012
	November	45,914	+ 680	40,698	+ 903	86,612	+ 1,583
	December	46,044	+ 130	40,771	+ 73	86,815	+ 203
2012	January	46,256	+ 212	40,773	+ 2	87,029	+ 214
	February	47,038	+ 782	41,176	+ 403	88,214	+ 1,185
	March	47,539	+ 501	41,177	+ 1	88,716	+ 502
	April	47,614	+ 75	40,828	- 349	88,442	- 274
	May	47,626	+ 12	40,438	- 390	88,064	- 378
	June	47,891	+ 265	40,574	+ 136	88,465	+ 401
	July	47,797	- 94	40,244	- 330	88,041	- 424
	August	47,569	- 228	39,585	- 659	87,154	- 887
	September	46,643	- 926	38,447	- 1,138	85,090	- 2,064
	October	46,829	+ 186	38,834	+ 387	85,663	+ 573
	November	47,695	+ 866	39,786	+ 952	87,481	+ 1,818
	December	48,082	+ 387	39,987	+ 201	88,069	+ 588

Table 9 Persons on the Live Register classified by nationality grouping

		Nationality grouping						
		Non-Irish nationals						
		United Kingdom	EU15 excl. Irl. & UK	EU15 to EU27 States	Other	Non-Irish nationals	Irish nationals	All Persons
2010	December	17,855	3,704	42,198	12,888	76,645	360,434	437,079
2011	January	18,078	3,793	43,619	13,037	78,527	364,150	442,677
	February	18,065	3,813	44,167	13,117	79,162	365,137	444,299
	March	17,956	3,817	43,722	13,099	78,594	362,599	441,193
	April	18,021	3,729	42,698	13,075	77,523	362,048	439,571
	May	18,075	3,711	41,791	13,401	76,978	363,969	440,947
	June	18,648	3,829	42,013	14,431	78,921	379,027	457,948
	July	19,006	3,872	41,732	14,675	79,285	390,999	470,284
	August	18,925	3,847	41,330	14,893	78,995	390,718	469,713
	September	17,894	3,586	40,000	13,941	75,421	362,020	437,441
	October	17,708	3,545	40,202	13,582	75,037	355,395	430,432
	November	17,648	3,571	40,788	13,512	75,519	354,048	429,567
	December	17,798	3,605	41,263	13,554	76,220	358,564	434,784
2012	January	17,827	3,648	42,831	13,845	78,151	361,438	439,589
	February	17,783	3,685	43,341	13,946	78,755	360,667	439,422
	March	17,521	3,608	43,025	13,926	78,080	355,974	434,054
	April	17,337	3,558	42,268	13,852	77,015	352,986	430,001
	May	17,447	3,551	41,634	14,151	76,783	356,124	432,907
	June	18,054	3,770	41,360	15,072	78,256	373,718	451,974
	July	18,290	3,756	41,167	15,209	78,422	381,901	460,323
	August	18,143	3,700	40,629	15,277	77,749	378,507	456,256
	September	17,135	3,525	39,335	14,324	74,319	355,016	429,335
	October	16,767	3,477	39,347	13,906	73,497	346,675	420,172
	November	16,695	3,530	39,935	13,588	73,748	343,529	417,277
	December	16,806	3,575	40,491	13,667	74,539	349,194	423,733

Annex - Activation Programmes

The table below contains the end of November 2012 data on the number of people availing of a range of programmes targeted primarily at the long-term unemployed (over 12 months) and other welfare recipients, including Lone Parents.

There were 84,061 people availing of these programmes in November 2012, which is an increase of 4,568 (+5.7%) from the previous year, when there were 79,493 people in activation programmes.

Persons on activation programmes are not counted as part of the monthly Live Register.

Live Register Activation Programmes

	November 2011	October 2012	November 2012
Back to Work Schemes			
Back to Work allowance scheme - Employee strand ¹	210	25	21
Back to Work Enterprise allowance scheme -self employed strand	10,560	10,919	10,884
Short-term Enterprise Allowance ²	1,270	1,131	1,138
Total Back to Work payments	12,040	12,075	12,043
Other Activation Programmes			
DSP Part-time Job Incentive	190	215	215
TUS - Community Work Placement Initiative (2011)	1,811	4,491	4,522
JobBridge (2011)	2,879	5,236	5,503
Total Other Activation Programmes	4,880	9,942	10,240
Community Employment Schemes (excluding Supervisors)	22,286	21,174	21,102
FAS Full Time Training for Unemployed People³	9,817	9,707	9,857
Back to Education Courses			
Vocational Training Opportunities Scheme (VTOS) ⁴	N/A	N/A	N/A
Back to Education Allowance (BTEA) ⁵	25,470	23,747	25,819
Total Back to Education Courses	30,470	28,747	30,819
Total Activation Programmes	79,493	81,645	84,061

¹ This scheme was closed to new applications from 1st May 2009.

² This scheme was introduced from 1st May 2009. It provides immediate support for someone in receipt of Jobseekers Benefit who wants to start a business.

³ Specific Skills Training/Local Training initiative/Traineeship/Return to Work. Breakdown became available for April 2012 Live Register release.

⁴ VTOS figures are estimated at 5,000 each year.

⁵ BTEA figures include all schemes but participants from JA & JB are not entitled to BTEA during the summer holidays.

Background Notes

Source and scope of the Live Register The Live Register is compiled from returns made for each local office to the Central Statistics Office by the Department of Social Protection. It comprises of persons under 65 years of age in the following classes:

- ◆ All Claimants for Jobseekers Benefit (JB) excluding systematic short-time workers
- ◆ Applicants for Jobseekers Allowance (JA) excluding smallholders/farm assists and other self-employed persons
- ◆ Other registrants including applicants for credited Social Welfare contributions but excluding those directly involved in an industrial dispute.

Reference Period The reference periods for the Live Register results are as follows:
December 2012 – 1st December to 28th December 2012
December 2011 – 26th November to 30th December 2011

Unemployment statistics The Live Register is not designed to measure unemployment. It includes part-time (those who work up to three days a week), seasonal and casual workers entitled to Jobseekers Allowance and or Jobseekers Benefit. **Unemployment is measured by the Quarterly National Household Survey** (formerly the Annual Labour Force Survey).

Standardised unemployment rates The Standardised Unemployment Rate (SUR) series in Table 3 is based on the estimated number of persons unemployed expressed as a percentage of the total economically active population (i.e. the Labour Force), using internationally comparable definitions of employment and unemployment, as recommended by the International Labour Office.

Official estimates of the number of persons unemployed and the unemployment rate are produced from the Quarterly National Household Survey (QNHS). The QNHS is the only source of information on unemployment and employment which can apply standard International Labour Organisation (ILO) methodology to the estimation of these key indicators. The background notes of the QNHS release contain more information on the ILO criteria. Given the timelag required to produce estimates from the QNHS and the quarterly periodicity, short-term trends in the Live Register are used to estimate more up-to-date monthly unemployment rates.

The seasonally adjusted QNHS estimate of unemployment is used as a benchmark for February (Quarter 1 QNHS), May (Quarter 2 QNHS), August (Quarter 3 QNHS) and November (Quarter 4 QNHS) each year. The latest QNHS benchmark is updated using the trend in the seasonally adjusted Live Register to allow the estimation of the SUR. Once new QNHS data is available it is used to revise the SUR series. The assumption underlying this methodology is that over short periods the change in the seasonally adjusted Live Register will represent accurately the change in unemployment which will be seen from the QNHS. This methodology has been used since the QNHS was first initiated at the end of 1997.

QNHS The Quarterly National Household Survey (QNHS), which began in September 1997, replaced the Labour Force Survey and provides quarterly estimates of the unemployment rate. Up to and including the fourth quarter of 2008 the QNHS operated on a seasonal quarter basis. As of the first quarter 2009 the QNHS is now undertaken on a calendar quarter basis.

The calendar reference quarters for survey results are:

Q1 - January to March, Q2 - April to June, Q3 - July to September and Q4 - October to December.

The calendar quarter estimates for Q2 2012 (adjusted for seasonality) are:

	Q1	Q2	Q3	Q4
	%	%	%	%
2007	4.5	4.7	4.6	4.9
2008	5.0	5.7	6.9	8.1
2009	10.2	12.1	12.6	13.0
2010	13.0	13.8	13.9	14.7
2011	14.3	14.5	14.9	14.8
2012	15.0	14.9	14.8	

Seasonal adjustment Since January 2011 the seasonal adjustment of the Live Register is completed by applying the X-12-ARIMA model, developed by the U.S. Census Bureau. Seasonal adjustment is conducted using the indirect approach, where each individual series is independently adjusted (male under 25 years, female under 25 years, male 25 years and over and female 25 years and over). To preserve consistency between the individual and aggregate series, the series for gender, age group and total Live Register are then created from these four component series.

The X-12 ARIMA method has the X-11 moving averages process at its core, but builds on this by providing options for pre-treating the series using a regARIMA approach for prior adjustment and series extension. In essence this methodology will estimate seasonal factors while taking account of temporary changes, outliers, level shifts and calendar effects (e.g timing of Easter).

All Live Register series are updated monthly with the latest three years of seasonally adjusted data as part of the concurrent approach. The comprehensive annual review contains revisions to the entire series. Revisions to the series are typically very minor in scale.

For additional information on the use of X-12-ARIMA see detailed note in the January 2011 LiveRegister release.

Jobseeker's Benefit Duration Prior to 19 January 2004 Jobseeker's Benefit was payable for **15 months** (390 days).

From 19 January 2004, Jobseeker's Benefit could be paid for a maximum of 15 months (390 days) to people who had at least 260 paid PRSI contributions. Jobseeker's Benefit could be paid for a maximum of 12 months (312 days) to people who had less than 260 paid contributions (Refers to new claim).

Since 15 October 2008, Jobseeker's Benefit can be paid for a maximum of **12 months** (312 days) to people who have at least 260 paid PRSI contributions. Jobseeker's Benefit can be paid for a maximum of **9 months** (234 days) to people who have less than 260 paid contributions (Refers to new claims).

Live Register Flows Live Register flows data is sourced from information collected by the Department of Social Protection. The aggregate of new registrations for each month is used in conjunction with the net change over the same period to calculate the outflow from the register. A new registration is defined as anybody on the Live Register in a particular month who was not on it the previous month. Inflows and outflows published in this release do not take account of inter-scheme activity within the Live Register. For example, if a claimant exhausts his/her entitlement to JB and opens a new JA claim this is counted as an outflow in JB and an inflow in JA.

Live Register Area Analysis The basis of the area analysis in Live Register statistics is the Department of Social Protection local office of registration. The areas served by Local Employment Offices do not correspond to specific geographic boundaries. Therefore, registrants at a given local office do not necessarily come from a particular region or area which can be precisely delineated e.g. data for the Cork City Local Office of Registration refers to all persons signing on in Cork City but may include persons not resident in Cork City. **The latest available Live Register data by Province, County and Local Office of Registration will be released on the CSO website through the CSO Main Data Dissemination Service, StatBank one day after the publication of this release.**

NUTS2 and NUTS3 regions The Regional classifications are based on the NUTS (Nomenclature of Territorial Units) classification used by Eurostat. The NUTS3 regions correspond to the eight Regional Authorities established under the Local Government Act, 1991 (Regional Authorities) (Establishment) Order, 1993, which came into operation on 1 January 1994. The NUTS2 regions, which were proposed by Government and agreed by Eurostat in 1999, are groupings of the NUTS3 regions.

Border, Midland and Western NUTS2 Region		Southern and Eastern NUTS2 Region	
Border	Cavan Donegal Leitrim Louth Monaghan Sligo	Dublin	Dublin City Dun Laoghaire-Rathdown Fingal South Dublin
Midland	Laois Longford Offaly Westmeath	Mid-East	Kildare Meath Wicklow
West	Galway City Galway County Mayo Roscommon	Mid-West	Clare Limerick City Limerick County North Tipperary
		South-East	Carlow Kilkenny South Tipperary Waterford City Waterford County Wexford
		South-West	Cork City Cork County Kerry

Occupations Live Register occupational data is sourced from information collected by the Department of Social Protection on the most recent occupation of claimants when they sign on the Live Register. The classification used is based on the UK Standard Occupational Classification (SOC). “No occupation” is an additional category and includes those who have never worked and those who have no stated occupation.

Age by Duration Analysis Duration of continuous registration on the Live Register was previously compiled on a half-yearly basis (April and October). The Live Register Age by Duration release has now been replaced by a monthly table in this release. The bi-annual release related to the second last Friday of the reference month but the monthly age by duration data since October 2009 corresponds to the end of month Live Register totals. **Detailed tables relating to regional and scheme data will continue to be made available on the CSO website through the CSO Main Data Dissemination Service, StatBank on a bi-annual basis.**

Casual and part-time workers The casual and part-time workers’ figure is based on data supplied by the Department of Social Protection. People may apply for Jobseeker’s Benefit or Jobseeker’s Allowance if they only work for part of a week and be included on the Live Register.

Nationality Data in the nationality grouping table is sourced from information collected by the Department of Social Protection on the nationality of claimants when they first sign on the Live Register.

CSO StatBank More detailed information on geographic breakdowns of the Live Register and duration of continuous registration along with all Live Register published data can be found on the CSO Main Data Dissemination Service, StatBank on the CSO website

<http://www.cso.ie/>

Go to:

- > Databases
- > StatBank (CSO Main Dissemination Service)
- > Labour Market and Earnings
- > Labour Force
- > Live Register

or click

<http://cso.ie/shorturl.aspx/39>

For further information or assistance use the contact details on the front page of the release or e-mail labour@cso.ie