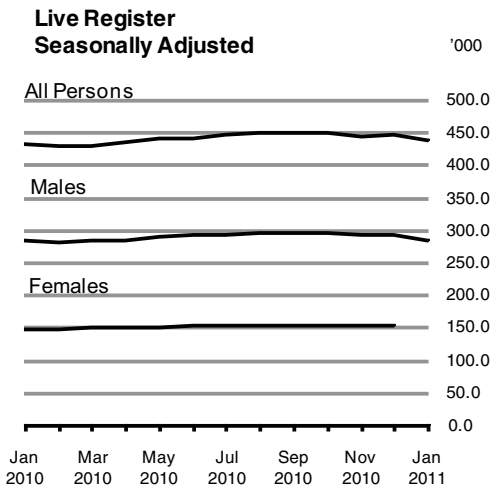




Live Register January 2011



	Live Register All Persons	Seasonally Adjusted
January 2010	436,936	433,100
December 2010	437,079	446,100
January 2011	442,677	439,200
Change in month	+ 5,598	- 6,900
Change in year	+ 5,741	+ 6,100

Seasonally adjusted Live Register decreases by 6,900 in January

In January 2011 there were 442,677 people signing on the Live Register. This represents an annual increase of 5,741 (+1.3%) over the year. This compares with an increase of 13,484 (+3.2%) in the year to December 2010 and an increase of 110,664 (+33.9%) in the year to January 2010.

While the number of people on the Live Register did increase over the month the level of increase (+5,598) was less than the increase recorded in the month to January in the previous 3 years. As a result, on a seasonally adjusted basis there was a monthly decrease of 6,900 on the Live Register in January 2011. This follows a minor increase in December 2010 which had been the first month to record a seasonally adjusted increase since August 2010. *As of January 2011 the seasonal adjustment methodology used for the Live Register series has been updated. See tables 1, 2a and graph opposite and note on seasonal adjustment in the annex.*

Other features include:

- ◆ There was a monthly decrease of 6,400 males and 600 females in the seasonally adjusted series in January. Since the seasonally adjusted series peaked in August 2010 the decrease has been predominantly male, while females have remained relatively constant. *See table 2a.*
- ◆ On an unadjusted basis the number of males on the Live Register has risen only marginally since January 2010 (+0.1%) while the number of females has increased by 3.7%. The situation one year previously i.e. the year to January 2010, showed far more significant increases for both males (+32.3%) and females (+37.2%). *See table 2a.*
- ◆ The number casual and part-time workers on the Live Register increased over the year by 6,369 (+8.3%) to 83,232. *See table 8.*
- ◆ The standardised unemployment rate in January was 13.4%, down from 13.6% in December. This compares with 13.6% in the third quarter of 2010, the latest seasonally adjusted unemployment rate from the Quarterly National Household Survey and an annual average of 13.3% for 2010. *See table 3.*

The Live Register is not designed to measure unemployment. It includes part-time workers (those who work up to three days a week), seasonal and casual workers entitled to Jobseekers Benefit or Allowance. Unemployment is measured by the Quarterly National Household Survey and the latest seasonally adjusted figure, for July to September 2010, is 288,500 persons unemployed.

For more information contact Sabrina Bowen at 021 453 5151, Karen Desmond at 021 453 5534 or Brendan Curtin at 021 453 5577.

Published by the Central Statistics Office, Ireland.

Ardee Road
Dublin 6
Ireland

Skehard Road
Cork
Ireland

LoCall: 1890 313 414 (ROI)
0870 876 0256 (UK/Nl)

Tel: +353 1 498 4000
Fax: +353 1 498 4229

Tel: +353 21 453 5000
Fax: +353 21 453 5492

Both offices may be contacted through any of these telephone numbers.

CSO on the Web: www.cso.ie
and go to
Labour Market and Earnings: Labour Market

Director General: Gerard O'Hanlon

Enquiries:

Live Register Statistics
Queries and Sales

Live Register Section, ext 5491
Email labour@cso.ie
Information Section, ext 5021
information@cso.ie

© Central Statistics Office

The contents of this release may be quoted provided the source is given clearly and accurately. Reproduction for own or internal use is permitted.

ISSN 1649-8011

Live Register schemes analysis

In January there were 125,696 Jobseekers Benefit (JB) claimants on the Live Register an annual decrease of 42,152 (-25.1%). On an annual basis the number of JB claimants has been falling since February 2010. The total number of JB claimants has fallen by 71,292 or 36.2% since a peak of 196,988 recorded in July 2009. *See table 1a.*

The number of Jobseekers Allowance (JA) applicants in January was 289,583 an increase of 40,447 over the year (16.2%). The level of annual increase in the number of JA applications has been slowing, both in nominal and proportional terms since the second half of 2009 when increases were over 100,000. *See table 1a.*

The number of "Other Registrants" on the Live Register increased by 7,446 (+37.3%) in the year to January 2011. The increase in JA applicants and "Other Registrants" combined more than offset the fall in JB claimants yielding the overall increase in the Live Register over the year. *See table 1a.*

For both males and females the fall in the number JB claimants was offset by an increase of a similar order of magnitude in the number of JA applicants. However a slight difference can be seen between persons aged under 25 compared with those aged 25 or over. Among persons aged under 25 the decrease in JB claimants (-5,776) was greater than the increase in JA claimants (+2,045) meaning the total number of people on the Live Register aged under 25 fell by nearly 3,700 over the year. However, for persons aged 25 or over the increase in JA applicants and "Other Registrants" more than offset the decrease in JB claimants meaning the total number of persons aged 25 or over on the Live Register increased by 9,414 (+2.7%) over the year. *See tables 1b and 1c.*

While the net change in the Live Register over the month was 5,598 there were 46,115 new registrants on the Live Register in January which compares with 42,615 in the previous month. New registrants consisted of 24,408 JB claims (52.9%), 19,527 JA applications (42.3%) and 2,180 other registrants (4.7%). On average 6,719 male and 4,810 female new registrants joined the Live Register each week in January. By comparison, in January 2010, 7,871 male and 4,514 female new registrants joined the Live Register each week. The difference between the net change in the Live Register and the number of new claimants is account for by closed claims and the movement of people between schemes. *See table 4.*

Live Register regional analysis

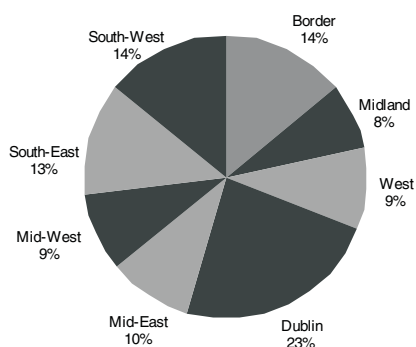
Annual increases in the Live Register were recorded in 6 of the 8 NUTS 3 regions. The largest percentage increase was in the Midland region (+4.5%), followed by the Mid-East region (+3.4%). Up to December 2010 there had been annual increases recorded for all 8 regions. *See table 5.*

Live Register occupational groups¹

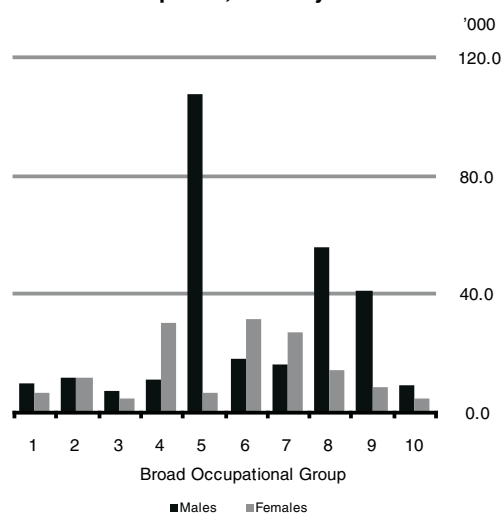
Craft and related (26.1%) was the largest occupational group on the Live Register in January, followed by *Plant and machine operatives* (16.0%). In January 2010 *Craft and related* (27.4%) and *Plant and machine operatives* (16.1%) were also the largest occupational groups. *See table 6.*

In the year to January 2011 four occupational groups showed Live Register increases. The largest percentage increase was in the *Other occupation* group (+9.8%), while the next largest increases were in the *Personal and protective service* (+7.1%) and *Sales* (+5.9%) groups. The largest percentage decrease was in the *Managers and administrators* group (-6.3%).

Live Register classified by Regional Authority, January 2011



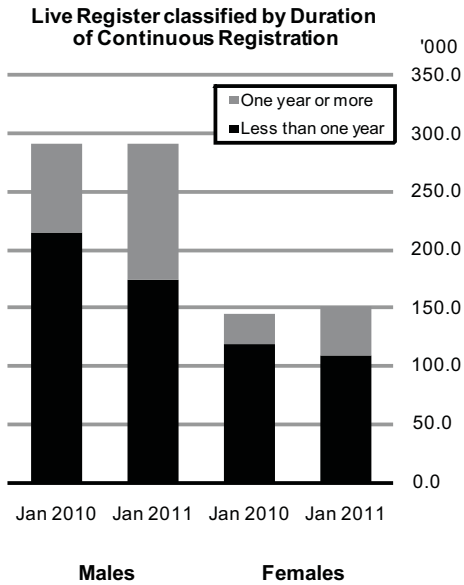
Live Register classified by Last Held Occupation, January 2011



KEY

- 1- Managers and administrators
- 2- Professional
- 3- Associate professional and technical
- 4- Clerical and secretarial
- 5- Craft and related
- 6- Personal and protective service
- 7- Sales
- 8- Plant and machine operatives
- 9- Other occupation
- 10- No occupation

¹ While the 'No Occupation' group is excluded from the analysis its subtotals are included in the relevant calculations presented in the text.



Live Register duration of continuous registration

In January 282,123 (63.7%) of all claimants on the Live Register were short term claimants. The comparable figure for January 2010 was 333,979 (76.4%). The annual fall of 51,856 in the number of short-term claimants consisted of a decrease of 41,824 in the number of male short term claimants and a decrease of 10,032 in female short term claimants. *See table 7.*

In the year to January 2011 the number of long term male claimants increased by 42,179 (+55.4%), while the comparable increase for females was 15,418 (+57.4%). *See table 7 and graph opposite.*

Live Register casual and part-time workers

There were 83,232 casual and part-time workers on the Live Register in January, which represents 18.8% of the total Live Register. This compares with 17.6% one year earlier when there were 76,863 casual and part-time workers on the Live Register. *See table 8.*

In the year to January 2011 the number of casual and part-time workers increased by 6,369 (+8.3%), with the number of males increasing by 3,374 (+8.3%) and the number of females increasing by 2,995 (+8.3%).

Live Register nationality groupings

In January Irish Nationals accounted for 82.3% (364,150) of the number of persons on the Live Register. Of the 78,527 non-Irish nationals, the largest constituent group on the Live Register continued to be nationals from the EU15 to EU27 States (43,619), followed by the UK (18,078). *See table 9.*

In the year to January 2011 the number of Irish nationals on the Live Register increased by 8,609 (+2.4%), while the number of non-Irish nationals decreased by 2,868 (-3.5%).

Table 1a Total persons on the Live Register

Category	January 2010	December 2010	January 2011	Monthly change	Annual change
Males					
JB Claims ¹	101,677	70,896	71,084	+ 188	- 30,593
JA Applications	183,178	208,371	211,071	+ 2,700	+ 27,893
Other Registrants	6,793	9,535	9,848	+ 313	+ 3,055
Total	291,648	288,802	292,003	+ 3,201	+ 355
Females					
JB Claims ¹	66,171	54,179	54,612	+ 433	- 11,559
JA Applications	65,958	76,997	78,512	+ 1,515	+ 12,554
Other Registrants	13,159	17,101	17,550	+ 449	+ 4,391
Total	145,288	148,277	150,674	+ 2,397	+ 5,386
All Persons					
JB Claims ¹	167,848	125,075	125,696	+ 621	- 42,152
JA Applications	249,136	285,368	289,583	+ 4,215	+ 40,447
Other Registrants	19,952	26,636	27,398	+ 762	+ 7,446
Total	436,936	437,079	442,677	+ 5,598	+ 5,741

Table 1b Persons under 25 years of age on the Live Register

Category	January 2010	December 2010	January 2011	Monthly change	Annual change
Males					
JB Claims ¹	11,322	7,122	7,008	- 114	- 4,314
JA Applications	43,758	44,868	45,081	+ 213	+ 1,323
Other Registrants	138	134	154	+ 20	+ 16
Total	55,218	52,124	52,243	+ 119	- 2,975
Females					
JB Claims ¹	6,903	5,078	5,441	+ 363	- 1,462
JA Applications	23,566	23,825	24,288	+ 463	+ 722
Other Registrants	223	253	265	+ 12	+ 42
Total	30,692	29,156	29,994	+ 838	- 698
All Persons					
JB Claims ¹	18,225	12,200	12,449	+ 249	- 5,776
JA Applications	67,324	68,693	69,369	+ 676	+ 2,045
Other Registrants	361	387	419	+ 32	+ 58
Total	85,910	81,280	82,237	+ 957	- 3,673

Table 1c Persons 25 years of age and over on the Live Register

Category	January 2010	December 2010	January 2011	Monthly change	Annual change
Males					
JB Claims ¹	90,355	63,774	64,076	+ 302	- 26,279
JA Applications	139,420	163,503	165,990	+ 2,487	+ 26,570
Other Registrants	6,655	9,401	9,694	+ 293	+ 3,039
Total	236,430	236,678	239,760	+ 3,082	+ 3,330
Females					
JB Claims ¹	59,268	49,101	49,171	+ 70	- 10,097
JA Applications	42,392	53,172	54,224	+ 1,052	+ 11,832
Other Registrants	12,936	16,848	17,285	+ 437	+ 4,349
Total	114,596	119,121	120,680	+ 1,559	+ 6,084
All Persons					
JB Claims ¹	149,623	112,875	113,247	+ 372	- 36,376
JA Applications	181,812	216,675	220,214	+ 3,539	+ 38,402
Other Registrants	19,591	26,249	26,979	+ 730	+ 7,388
Total	351,026	355,799	360,440	+ 4,641	+ 9,414

¹ See Background Notes.

Table 2a Total persons on the Live Register - Unadjusted and Seasonally Adjusted

	Month	Unadjusted Series			Seasonally Adjusted Series ¹		
		Males	Females	All Persons	Males	Females	All Persons
2009	January	220,400	105,900	326,300	215,300	108,000	323,300
	February	238,200	114,300	352,500	230,700	115,200	345,900
	March	250,500	118,700	369,200	245,300	121,700	367,000
	April	257,800	124,000	381,900	255,400	126,600	382,000
	May	265,500	128,700	394,100	266,300	131,400	397,700
	June	275,400	140,000	415,500	270,800	134,400	405,300
	July	281,300	151,100	432,400	275,500	137,400	412,900
	August	284,200	152,600	436,700	280,200	140,200	420,300
	September	278,000	141,900	419,900	285,000	142,800	427,900
	October	273,600	138,800	412,400	287,800	144,300	432,100
	November	276,100	137,400	413,500	288,500	145,700	434,200
	December	282,900	140,700	423,600	286,900	146,100	432,900
2010	January	291,600	145,300	436,900	285,400	147,700	433,100
	February	290,900	146,100	437,000	282,500	147,200	429,700
	March	290,200	144,900	435,100	283,900	146,600	430,500
	April	287,800	144,800	432,700	286,500	148,900	435,400
	May	290,400	147,500	437,900	290,700	150,000	440,700
	June	297,100	155,800	452,900	292,300	150,400	442,700
	July	300,500	166,400	466,800	294,500	152,400	446,900
	August	300,000	167,000	466,900	295,800	154,300	450,100
	September	289,800	152,600	442,400	296,500	153,400	449,900
	October	281,600	148,000	429,600	295,300	153,500	448,700
	November	280,200	144,800	425,000	292,500	153,200	445,700
	December	288,800	148,300	437,100	292,500	153,600	446,100
2011	January	292,000	150,700	442,700	286,100	153,000	439,200

¹ Table contains revised figures.**Table 2b Persons under 25 years of age on the Live Register - Unadjusted and Seasonally Adjusted**

	Month	Unadjusted Series			Seasonally Adjusted Series ¹		
		Males	Females	All Persons	Males	Females	All Persons
2009	January	46,400	23,900	70,300	45,800	24,800	70,600
	February	49,700	25,900	75,600	48,600	26,400	75,000
	March	52,500	26,800	79,300	51,500	27,900	79,500
	April	52,900	27,400	80,300	53,400	29,000	82,400
	May	54,400	29,500	83,900	55,100	30,300	85,400
	June	57,900	33,200	91,100	55,900	30,700	86,700
	July	59,300	35,400	94,600	56,400	31,100	87,500
	August	59,400	35,600	95,000	56,700	31,400	88,100
	September	56,700	33,100	89,800	57,200	32,000	89,200
	October	54,100	30,800	84,900	57,200	32,200	89,500
	November	53,500	29,900	83,400	56,700	32,400	89,100
	December	54,800	29,600	84,400	56,500	32,300	88,800
2010	January	55,200	30,700	85,900	54,900	31,900	86,800
	February	54,600	30,500	85,100	53,600	31,200	84,800
	March	54,900	30,100	85,000	54,100	31,200	85,300
	April	53,400	29,600	83,000	54,200	31,600	85,800
	May	54,400	31,200	85,600	55,100	31,900	87,000
	June	57,500	34,100	91,600	55,500	31,700	87,100
	July	58,600	36,000	94,600	55,700	31,800	87,500
	August	58,300	36,300	94,600	55,600	32,000	87,700
	September	55,200	33,500	88,700	55,500	32,200	87,700
	October	52,000	30,900	82,900	54,900	32,200	87,000
	November	51,000	29,500	80,500	54,000	31,900	85,900
	December	52,100	29,200	81,300	53,500	31,700	85,200
2011	January	52,200	30,000	82,200	52,100	31,200	83,300

¹ Table contains revised figures.

Table 2c Persons 25 years of age and over on the Live Register - Unadjusted and Seasonally Adjusted

	Month	Unadjusted Series			Seasonally Adjusted Series ¹		
		Males	Females	All Persons	Males	Females	All Persons
2009	January	174,000	82,000	256,000	169,500	83,300	252,700
	February	188,500	88,400	276,900	182,100	88,800	270,900
	March	198,000	91,900	289,900	193,800	93,700	287,600
	April	205,000	96,600	301,600	202,000	97,600	299,600
	May	211,100	99,200	310,300	211,200	101,100	312,300
	June	217,500	106,800	324,400	214,900	103,700	318,600
	July	222,000	115,700	337,800	219,100	106,300	325,400
	August	224,800	116,900	341,800	223,400	108,800	332,200
	September	221,300	108,700	330,000	227,800	110,900	338,700
	October	219,500	108,000	327,500	230,600	112,100	342,700
	November	222,600	107,500	330,100	231,800	113,300	345,100
	December	228,000	111,100	339,200	230,400	113,800	344,200
2010	January	236,400	114,600	351,000	230,500	115,800	346,300
	February	236,300	115,600	351,800	228,900	116,000	344,900
	March	235,300	114,800	350,100	229,800	115,400	345,200
	April	234,400	115,200	349,700	232,200	117,300	349,500
	May	235,900	116,400	352,300	235,500	118,100	353,700
	June	239,500	121,700	361,200	236,800	118,800	355,600
	July	241,800	130,400	372,200	238,800	120,600	359,400
	August	241,700	130,700	372,400	240,200	122,300	362,400
	September	234,600	119,100	353,800	241,000	121,200	362,200
	October	229,600	117,100	346,600	240,400	121,300	361,700
	November	229,200	115,300	344,500	238,400	121,300	359,800
	December	236,700	119,100	355,800	238,900	121,900	360,900
2011	January	239,800	120,700	360,400	234,000	121,900	355,800

¹ Table contains revised figures.

Table 3 Seasonally Adjusted Standardised Unemployment Rates (SUR)¹

Month	2006	2007	2008	2009	2010	2011
	%	%	%	%	%	%
January	4.4	4.4	4.8	9.4	13.0	13.4
February ²	4.4	4.5	4.9	10.2	12.9	
March	4.4	4.4	5.2	10.8	12.9	
April	4.4	4.5	5.3	11.2	13.1	
May ²	4.4	4.5	5.5	11.6	13.2	
June	4.5	4.5	5.9	11.9	13.4	
July	4.5	4.5	6.3	12.1	13.5	
August ²	4.5	4.5	6.8	12.4	13.6 ³	
September	4.5	4.6	7.1	12.7	13.6	
October	4.4	4.6	7.6	13.0	13.6	
November ²	4.3	4.8	8.1	13.1	13.5	
December	4.4	4.8	8.6	13.1	13.6	
Annual average	4.4	4.6	6.4	11.8	13.3	

¹ Table contains revised figures.

² Benchmark Quarterly National Household Survey (QNHS) calendar quarter estimates.

³ The latest QNHS estimate of the unemployment rate (adjusted for seasonality) is: July-September 2010, 13.6%.

Table 4 Summary of flows¹ on and off the Live Register

		Number of Weeks	Males				Females			
			Live Register	New Regis- trations	Outflow (derived)	Average Weekly Change	Live Register	New Regis- trations	Outflow (derived)	Average Weekly Change
JB Claims										
2010	January	5	101,677	20,704	19,743	+ 192	66,171	13,761	12,181	+ 316
	February	4	97,189	12,946	17,434	- 1,122	65,364	10,350	11,157	- 202
	March	4	92,871	11,045	15,363	- 1,080	63,013	7,538	9,889	- 588
	April	5	87,321	13,413	18,963	- 1,110	61,339	12,280	13,954	- 335
	May	4	84,547	10,582	13,356	- 694	60,438	7,942	8,843	- 225
	June	4	83,278	10,886	12,155	- 317	62,799	10,252	7,891	+ 590
	July	5	81,499	13,338	15,117	- 356	68,229	16,305	10,875	+ 1,086
	August	4	78,239	8,455	11,715	- 815	66,601	7,304	8,932	- 407
	September	4	72,408	9,325	15,156	- 1,458	55,942	7,627	18,286	- 2,665
	October	5	68,599	12,335	16,144	- 762	54,117	10,568	12,393	- 365
	November	4	67,194	10,910	12,315	- 351	51,806	8,229	10,540	- 578
	December	5	70,896	13,881	10,179	+ 740	54,179	8,990	6,617	+ 475
2011	January	4	71,084	13,311	13,123	+ 47	54,612	11,097	10,664	+ 108
JA Applications										
2010	January	5	183,178	17,807	10,297	+ 1,502	65,958	7,480	4,933	+ 509
	February	4	186,452	15,193	11,919	+ 819	66,947	6,663	5,674	+ 247
	March	4	189,865	13,756	10,343	+ 853	67,721	5,853	5,079	+ 194
	April	5	192,591	15,851	13,125	+ 545	68,869	7,276	6,128	+ 230
	May	4	197,642	13,652	8,601	+ 1,263	71,999	7,134	4,004	+ 783
	June	4	205,259	15,428	7,811	+ 1,904	77,282	8,880	3,597	+ 1,321
	July	5	210,185	17,241	12,315	+ 985	81,409	10,384	6,257	+ 825
	August	4	212,731	12,179	9,633	+ 637	83,276	6,636	4,769	+ 467
	September	4	208,367	13,679	18,043	- 1,091	80,058	7,597	10,815	- 805
	October	5	203,934	16,281	20,714	- 887	77,130	8,473	11,401	- 586
	November	4	203,693	13,216	13,457	- 60	76,078	6,571	7,623	- 263
	December	5	208,371	12,724	8,046	+ 936	76,997	5,360	4,441	+ 184
2011	January	4	211,071	12,783	10,083	+ 675	78,512	6,744	5,229	+ 379
Other Registrants										
2010	January	5	6,793	843	520	+ 65	13,159	1,327	907	+ 84
	February	4	7,226	774	341	+ 108	13,778	1,330	711	+ 155
	March	4	7,480	560	306	+ 64	14,171	988	595	+ 98
	April	5	7,916	797	361	+ 87	14,621	1,293	843	+ 90
	May	4	8,196	582	302	+ 70	15,100	979	500	+ 120
	June	4	8,521	608	283	+ 81	15,743	1,208	565	+ 161
	July	5	8,776	844	589	+ 51	16,726	2,075	1,092	+ 197
	August	4	8,981	604	399	+ 51	17,095	1,016	647	+ 92
	September	4	9,023	616	574	+ 11	16,619	1,116	1,592	- 119
	October	5	9,066	771	728	+ 9	16,707	1,399	1,311	+ 18
	November	4	9,341	704	429	+ 69	16,890	1,157	974	+ 46
	December	5	9,535	665	471	+ 39	17,101	995	784	+ 42
2011	January	4	9,848	782	469	+ 78	17,550	1,398	949	+ 112

¹ Flow analysis: inflows and outflows published in this table do not take account of inter-scheme activity within the Live Register. For example, if a claimant exhausts his/her entitlement to JB and opens a new JA claim this is counted as an outflow in JB and an inflow in JA.

Table 5 Persons on the Live Register classified by region

NUTS2 and NUTS3 Regions ¹	January 2010	December 2010	January 2011	Monthly change	Annual change	Under 25 years	25 years & over
Males							
Border, Midland and Western	89,836	89,277	90,030	+ 753	+ 194	16,769	73,261
Border	41,181	41,042	41,217	+ 175	+ 36	7,917	33,300
Midland	21,576	21,973	22,145	+ 172	+ 569	4,148	17,997
West	27,079	26,262	26,668	+ 406	- 411	4,704	21,964
Southern and Eastern	201,812	199,525	201,973	+ 2,448	+ 161	35,474	166,499
Dublin	69,524	68,319	69,415	+ 1,096	- 109	12,571	56,844
Mid-East	27,187	27,805	27,854	+ 49	+ 667	4,699	23,155
Mid-West	26,238	25,349	25,741	+ 392	- 497	4,613	21,128
South-East	37,871	37,987	38,192	+ 205	+ 321	7,094	31,098
South-West	40,992	40,065	40,771	+ 706	- 221	6,497	34,274
Total	291,648	288,802	292,003	+ 3,201	+ 355	52,243	239,760
Females							
Border, Midland and Western	44,481	46,239	47,055	+ 816	+ 2,574	9,714	37,341
Border	20,232	20,992	21,299	+ 307	+ 1,067	4,453	16,846
Midland	10,454	11,157	11,321	+ 164	+ 867	2,479	8,842
West	13,795	14,090	14,435	+ 345	+ 640	2,782	11,653
Southern and Eastern	100,807	102,038	103,619	+ 1,581	+ 2,812	20,280	83,339
Dublin	34,053	33,643	34,158	+ 515	+ 105	6,960	27,198
Mid-East	14,108	14,684	14,844	+ 160	+ 736	2,685	12,159
Mid-West	13,468	13,498	13,705	+ 207	+ 237	2,747	10,958
South-East	18,359	19,033	19,259	+ 226	+ 900	4,142	15,117
South-West	20,819	21,180	21,653	+ 473	+ 834	3,746	17,907
Total	145,288	148,277	150,674	+ 2,397	+ 5,386	29,994	120,680
All Persons							
Border, Midland and Western	134,317	135,516	137,085	+ 1,569	+ 2,768	26,483	110,602
Border	61,413	62,034	62,516	+ 482	+ 1,103	12,370	50,146
Midland	32,030	33,130	33,466	+ 336	+ 1,436	6,627	26,839
West	40,874	40,352	41,103	+ 751	+ 229	7,486	33,617
Southern and Eastern	302,619	301,563	305,592	+ 4,029	+ 2,973	55,754	249,838
Dublin	103,577	101,962	103,573	+ 1,611	- 4	19,531	84,042
Mid-East	41,295	42,489	42,698	+ 209	+ 1,403	7,384	35,314
Mid-West	39,706	38,847	39,446	+ 599	- 260	7,360	32,086
South-East	56,230	57,020	57,451	+ 431	+ 1,221	11,236	46,215
South-West	61,811	61,245	62,424	+ 1,179	+ 613	10,243	52,181
Total	436,936	437,079	442,677	+ 5,598	+ 5,741	82,237	360,440

¹ The composition of the regions is described in the Background Notes.

Table 6 Persons on the Live Register classified by last held occupation¹

Broad occupational group	January 2010	December 2010	January 2011	Monthly change	Annual change	Under 25 years	25 years & over
Males							
Managers and administrators	11,012	10,056	10,184	+ 128	- 828	466	9,718
Professional	13,277	12,440	12,281	- 159	- 996	1,332	10,949
Associate professional and technical	7,860	7,601	7,715	+ 114	- 145	1,033	6,682
Clerical and secretarial	11,719	11,377	11,522	+ 145	- 197	2,028	9,494
Craft and related	112,489	107,830	108,151	+ 321	- 4,338	17,145	91,006
Personal and protective service	17,370	17,973	18,680	+ 707	+ 1,310	3,447	15,233
Sales	15,749	15,792	16,619	+ 827	+ 870	5,552	11,067
Plant and machine operatives	55,750	55,350	56,042	+ 692	+ 292	8,297	47,745
Other occupation	38,568	41,037	41,228	+ 191	+ 2,660	8,402	32,826
No occupation ¹	7,854	9,346	9,581	+ 235	+ 1,727	4,541	5,040
Total	291,648	288,802	292,003	+ 3,201	+ 355	52,243	239,760
Females							
Managers and administrators	7,269	6,814	6,948	+ 134	- 321	324	6,624
Professional	11,941	12,552	12,037	- 515	+ 96	1,198	10,839
Associate professional and technical	5,284	5,178	5,325	+ 147	+ 41	638	4,687
Clerical and secretarial	31,811	30,985	30,680	- 305	- 1,131	2,890	27,790
Craft and related	7,045	7,004	7,200	+ 196	+ 155	1,279	5,921
Personal and protective service	30,150	31,302	32,196	+ 894	+ 2,046	7,681	24,515
Sales	26,082	26,393	27,694	+ 1,301	+ 1,612	8,169	19,525
Plant and machine operatives	14,728	14,494	14,760	+ 266	+ 32	2,603	12,157
Other occupation	6,838	8,496	8,646	+ 150	+ 1,808	2,550	6,096
No occupation ¹	4,140	5,059	5,188	+ 129	+ 1,048	2,662	2,526
Total	145,288	148,277	150,674	+ 2,397	+ 5,386	29,994	120,680
All Persons							
Managers and administrators	18,281	16,870	17,132	+ 262	- 1,149	790	16,342
Professional	25,218	24,992	24,318	- 674	- 900	2,530	21,788
Associate professional and technical	13,144	12,779	13,040	+ 261	- 104	1,671	11,369
Clerical and secretarial	43,530	42,362	42,202	- 160	- 1,328	4,918	37,284
Craft and related	119,534	114,834	115,351	+ 517	- 4,183	18,424	96,927
Personal and protective service	47,520	49,275	50,876	+ 1,601	+ 3,356	11,128	39,748
Sales	41,831	42,185	44,313	+ 2,128	+ 2,482	13,721	30,592
Plant and machine operatives	70,478	69,844	70,802	+ 958	+ 324	10,900	59,902
Other occupation	45,406	49,533	49,874	+ 341	+ 4,468	10,952	38,922
No occupation ¹	11,994	14,405	14,769	+ 364	+ 2,775	7,203	7,566
Total	436,936	437,079	442,677	+ 5,598	+ 5,741	82,237	360,440

¹ Includes those who never worked and those who have no stated occupation.

Table 7 Persons on the Live Register classified by duration of continuous registration

Duration	January 2010	December 2010	January 2011	Monthly change	Annual change	Under 25 years	25 years & over
Males							
Less than one year	215,568	174,304	173,744	- 560	- 41,824	32,908	140,836
One year or more	76,080	114,498	118,259	+ 3,761	+ 42,179	19,335	98,924
Total	291,648	288,802	292,003	+ 3,201	+ 355	52,243	239,760
Females							
Less than one year	118,411	107,451	108,379	+ 928	- 10,032	21,255	87,124
One year or more	26,877	40,826	42,295	+ 1,469	+ 15,418	8,739	33,556
Total	145,288	148,277	150,674	+ 2,397	+ 5,386	29,994	120,680
All Persons							
Less than one year	333,979	281,755	282,123	+ 368	- 51,856	54,163	227,960
One year or more	102,957	155,324	160,554	+ 5,230	+ 57,597	28,074	132,480
Total	436,936	437,079	442,677	+ 5,598	+ 5,741	82,237	360,440

Table 8 Casual and part-time workers on the Live Register¹

		Males	Monthly change	Females	Monthly change	All Persons	Monthly change
2009	January	22,807	+ 4,207	22,619	+ 2,985	45,426	+ 7,192
	February	27,777	+ 4,970	25,977	+ 3,358	53,754	+ 8,328
	March	31,384	+ 3,607	28,449	+ 2,472	59,833	+ 6,079
	April	32,986	+ 1,602	29,315	+ 866	62,301	+ 2,468
	May	35,588	+ 2,602	30,590	+ 1,275	66,178	+ 3,877
	June	36,718	+ 1,130	31,414	+ 824	68,132	+ 1,954
	July	37,415	+ 697	32,138	+ 724	69,553	+ 1,421
	August	37,749	+ 334	32,354	+ 216	70,103	+ 550
	September	38,268	+ 519	32,590	+ 236	70,858	+ 755
	October	37,273	- 995	32,087	- 503	69,360	- 1,498
	November	39,322	+ 2,049	34,308	+ 2,221	73,630	+ 4,270
	December	39,493	+ 171	34,506	+ 198	73,999	+ 369
2010	January	40,743	+ 1,250	36,120	+ 1,614	76,863	+ 2,864
	February	42,026	+ 1,283	37,263	+ 1,143	79,289	+ 2,426
	March	42,284	+ 258	37,565	+ 302	79,849	+ 560
	April	41,713	- 571	37,396	- 169	79,109	- 740
	May	41,602	- 111	37,273	- 123	78,875	- 234
	June	41,790	+ 188	37,449	+ 176	79,239	+ 364
	July	41,624	- 166	37,448	- 1	79,072	- 167
	August	41,162	- 462	37,120	- 328	78,282	- 790
	September	40,399	- 763	36,480	- 640	76,879	- 1,403
	October	40,914	+ 515	37,010	+ 530	77,924	+ 1,045
	November	42,162	+ 1,248	38,046	+ 1,036	80,208	+ 2,284
	December	43,510	+ 1,348	38,548	+ 502	82,058	+ 1,850
2011	January	44,117	+ 607	39,115	+ 567	83,232	+ 1,174

¹ See Background Notes.

Table 9 Persons on the Live Register classified by nationality grouping

		Nationality grouping						
		Non-Irish nationals						
		United Kingdom	EU15 excl. Irl. & UK	EU15 to EU27 States	Other	Non-Irish nationals	Irish nationals	All Persons
2009	January	14,743	3,632	35,627	9,999	64,001	262,271	326,272
	February	15,642	4,033	40,799	10,838	71,312	281,141	352,453
	March	16,220	4,224	43,286	11,449	75,179	294,024	369,203
	April	16,731	4,345	44,358	11,852	77,286	304,590	381,876
	May	17,225	4,358	44,209	12,652	78,444	315,690	394,134
	June	17,929	4,497	44,102	13,737	80,265	335,197	415,462
	July	18,490	4,460	43,098	14,050	80,098	352,323	432,421
	August	18,663	4,445	42,685	13,891	79,684	357,041	436,725
	September	18,098	4,219	41,990	13,436	77,743	342,111	419,854
	October	17,857	4,081	41,369	12,997	76,304	336,103	412,407
	November	17,840	4,031	42,003	12,906	76,780	336,725	413,505
	December	18,062	4,073	42,366	13,018	77,519	346,076	423,595
2010	January	18,524	4,186	45,328	13,357	81,395	355,541	436,936
	February	18,413	4,139	45,338	13,376	81,266	355,690	436,956
	March	18,238	4,039	44,486	13,278	80,041	355,080	435,121
	April	18,081	3,955	43,248	13,107	78,391	354,266	432,657
	May	18,217	3,964	42,416	13,472	78,069	359,853	437,922
	June	18,619	4,028	41,856	14,342	78,845	374,037	452,882
	July	18,979	4,100	41,570	14,563	79,212	387,612	466,824
	August	19,007	4,115	41,154	14,581	78,857	388,066	466,923
	September	18,190	3,902	40,427	13,926	76,445	365,972	442,417
	October	17,715	3,755	40,065	13,100	74,635	354,918	429,553
	November	17,598	3,705	40,728	12,751	74,782	350,220	425,002
	December	17,855	3,704	42,198	12,888	76,645	360,434	437,079
2011	January	18,078	3,793	43,619	13,037	78,527	364,150	442,677

Annex - Update to Live Register Seasonal Adjustment

From January 2011, in line with best international practice/standards, the seasonal adjustment methodology being applied to the Live Register series will change from the old X-11 methodology to the X-12-ARIMA methodology. At its core the X-12-ARIMA methodology uses the same estimation approach as X-11 but it allows additional factors to be considered to enhance the estimation of accurate seasonal factors, such as:

- Calendar effects, e.g. the timing of Easter,
- Short-term or one off changes in the number of people signing on which are not representative of the longer term trend (outliers, temporary changes or level shifts).

Outliers, temporary changes and level shifts are abrupt changes in the underlying series that can affect the quality of the seasonal adjustment if not treated correctly. The X-12-ARIMA seasonal adjustment methodology identifies any outliers, temporary changes or level changes and removes them from the original series before the seasonal adjustment factors are calculated. Once the seasonal adjustment factors are calculated these outliers, temporary changes and level shifts are then re-introduced so they are present in the final seasonally adjusted series. This change is in line with the broader CSO policy that all seasonally adjusted series should be produced using the X-12-ARIMA model.

As with many statistical series the Live Register is subject to seasonality, for example with a larger number of persons signing on typically during the summer months and leaving the register at the end of the summer. To facilitate interpretation of the underlying trends in the Live Register the unadjusted number of persons signing on the Live Register is seasonally adjusted to remove these seasonal fluctuations.

Up to and including December 2010 the X-11 methodology, developed by the US Census Bureau, was being used with the seasonally adjusted series being updated twice each year (January and July). Each time an update was undertaken seasonal factors were estimated for the following six months after which time the series was updated again. In addition to estimating seasonal factors for future months the updates also allowed the revision of the seasonally adjusted series for previous months.

In addition to the change in the seasonal adjustment methodology the following issues relating to the seasonal adjustment approach can be noted:

1. Seasonal adjustment will continue to be conducted using the indirect approach, where each of four individual series is independently adjusted (male under 25 years, female under 25 years, male 25 years and over and female 25 years and over). To preserve consistency between the individual and aggregate series, the series for gender, age group and total Live Register are then created from these four component series. While direct seasonal adjustment can also be undertaken (where the total series is directly seasonally adjusted independent of the component series and may not be equal to the sum of the male and female series), analysis shows the impact on the total series is low and in all cases the indirect and direct X12-ARIMA estimates are closer to each other than the original X11 series.
2. In conjunction with the introduction of X-12 ARIMA the revisions policy of the Live Register seasonally adjusted series will move to monthly revisions (concurrent) from twice yearly (forward-factor). This will ensure that the seasonal adjustment is based on the latest available Live Register data and produces the best possible short-term trend indicators for both monthly changes and the standardised unemployment rate (SUR). This concurrent revision approach will be accompanied by a comprehensive annual review of the seasonal adjustment model, all outliers, regressors and filters in January of each year.

Impact on estimates Using the latest available data at January 2011 the seasonally adjusted series has been created using both the new approach (X-12-ARIMA with concurrent updates) and the old approach (X-11 with forward-factors) as presented in figure A1 and table A1 below.

Figure A1 Total Persons on the Live Register unadjusted and seasonally adjusted by seasonal adjustment model, December 2006 to December 2010

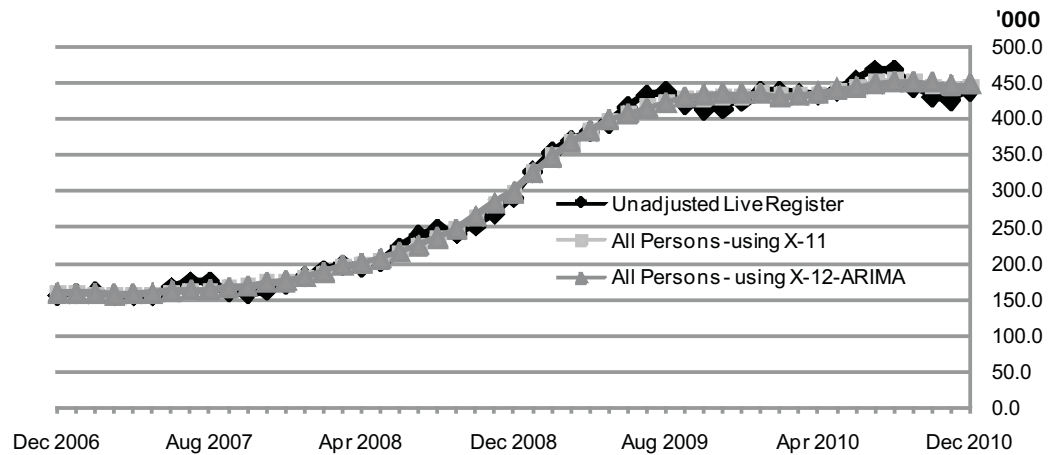


Figure A1 shows that the level of difference in terms of the longer term series between the X-11 and X-12-ARIMA series is very low to the point where the difference is difficult to perceive on the graph. Both can be seen to present a relatively smooth curve through the unadjusted series which is the expected outcome for a seasonally adjusted series.

The key indicator arising from a seasonally adjusted series is the measure of short term change in the series, in the case of the live register the monthly change. Table A1 shows the total seasonally adjusted Live Register series on a monthly basis for 2010 and the monthly change recorded for each time period.

Table A1 Seasonally adjusted Live Register series and monthly change by month and seasonal adjustment model from December 2009 to December 2010

Month	Seasonally Adjusted		Monthly Change	
	All Persons		All Persons	
	X-11	X-12-ARIMA	X-11	X-12-ARIMA
Dec 2009	430,700	432,900		
Jan 2010	435,700	433,100	5,000	200
Feb 2010	432,600	429,700	-3,100	-3,400
Mar 2010	432,000	430,500	-600	800
Apr 2010	433,400	435,400	1,400	4,900
May 2010	438,500	440,700	5,100	5,300
Jun 2010	443,700	442,700	5,200	2,000
Jul 2010	450,400	446,900	6,700	4,200
Aug 2010	454,000	450,100	3,600	3,200
Sep 2010	450,400	449,900	-3,600	-200
Oct 2010	444,500	448,700	-5,900	-1,200
Nov 2010	441,400	445,700	-3,100	-3,000
Dec 2010	444,500	446,100	3,100	400

At the level of monthly change differences can be seen over the course of the year although the annual change, as is expected with seasonally adjusted series, is the same (between +13,200 and +13,800 in each series in line with the increase in the unadjusted series). In the year to December 2010 the main difference in trend during the course of the year is that the movements in the X-12-ARIMA series are less extreme.

For example, the X-11 series increased by over 20,000 between the period of April to August 2010, before falling back by close to 4,000 in September 2010. Over the full period April to September 2010 the X-12 series shows a similar total increase (+14,500) but the increase takes place more smoothly across the 5 month period. Similarly after September 2010 the X-11 series falls more rapidly up to November 2010 than the X-12 series but subsequently the X-11 series records a larger increase in December 2010 than the X-12 series.

In summary while both X-11 and X-12-ARIMA provide similar series over time, X-12-ARIMA provides greater scope for dealing with one-off shifts etc. in the series thus providing a smoother series of period on period changes. From January 2011 the CSO will publish seasonally adjusted Live Register series on the basis of the X-12-ARIMA model.

**Interpretation of
seasonally adjusted and
unadjusted series**

In interpreting Live Register series the unadjusted and seasonally adjusted series have different uses:

- The unadjusted series should be primarily referred to in relation to the actual number of people signing on the Live Register at any given point in time. Additionally the unadjusted series should be used for the annual change in the number of persons signing on (although it will give the same annual change as seasonally adjusted series).
- The seasonally adjusted series should be used for sub-annual change, most particularly the change on a monthly basis. The seasonally adjusted total does not represent the total number of people signing on at a point in time, rather it is an estimate derived to allow the underlying trend over shorter periods to be estimated.

For additional information on the use of X-12-ARIMA see (Findley, D.F., B.C. Monsell, W.R. Bell, M.C. Otto, and B. Chen (1998), "New Capabilities and Methods of the X-12-Arima Seasonal Adjustment Program", *Journal of Business & Economic Statistics*, 16, pp. 127-177.) and www.census.gov/srd/www/x12a/.

Background Notes

Source and scope of the Live Register The Live Register is compiled from returns made for each local office to the Central Statistics Office by the Department of Social Protection. It comprises persons under 65 years of age in the following classes:

- ◆ All Claimants for Jobseekers Benefit (JB) excluding systematic short-time workers
- ◆ Applicants for Jobseekers Allowance (JA) excluding smallholders/farm assists and other self-employed persons
- ◆ Other registrants including applicants for credited Social Welfare contributions but excluding those directly involved in an industrial dispute.

Reference Period The reference periods for the Live Register results are as follows:
January 2011 – 1st January to 28th January 2011.
January 2010 – 26th December 2009 to 29th January 2010.

Unemployment statistics The Live Register is not designed to measure unemployment. It includes part-time (those who work up to three days a week), seasonal and casual workers entitled to Jobseekers Allowance or Jobseekers Benefit. **Unemployment is measured by the Quarterly National Household Survey** (formerly the Annual Labour Force Survey).

Standardised unemployment rates The Standardised Unemployment Rate (SUR) series in Table 3 is based on the estimated number of persons unemployed expressed as a percentage of the total economically active population (i.e. the Labour Force), using internationally comparable definitions of employment and unemployment, as recommended by the International Labour Office. Benchmark estimates of the SUR for February, May, August and November of each year are calculated using seasonally adjusted data from the Quarterly National Household Survey. The monthly trend in the seasonally adjusted Live Register is then used to estimate the monthly SUR between successive surveys. The traditional estimation approach has been used from April 1997 onwards.

QNHS The Quarterly National Household Survey (QNHS), which began in September 1997, replaced the Labour Force Survey and provides quarterly estimates of the unemployment rate. Up to and including the fourth quarter of 2008 the QNHS operated on a seasonal quarter basis. As of the first quarter 2009 the QNHS is now undertaken on a calendar quarter basis.

The calendar reference quarters for survey results are:

Q1 - January to March, Q2 - April to June, Q3 - July to September and Q4 - October to December.

The calendar quarter estimates for Q3 2010 (adjusted for seasonality) are:

	Q1	Q2	Q3	Q4
	%	%	%	%
2005	4.2	4.6	4.4	4.3
2006	4.4	4.4	4.5	4.3
2007	4.5	4.5	4.5	4.8
2008	4.9	5.5	6.8	8.1
2009	10.2	11.6	12.4	13.1
2010	12.9	13.2	13.6	

Seasonal adjustment Seasonal adjustment of the Live Register uses the X-12-ARIMA model of the US Census Bureau. (See Annex for further information.)

- Jobseekers Benefit Duration** Prior to 19 January 2004 Jobseekers Benefit was payable for **15 months** (390 days).
From 19 January 2004, Jobseeker's Benefit could be paid for a maximum of **15 months** (390 days) to people who had at least 260 paid PRSI contributions. Jobseeker's Benefit could be paid for a maximum of **12 months** (312 days) to people who had less than 260 paid contributions. (Refers to new claims).

Since 15 October 2008, Jobseeker's Benefit can be paid for a maximum of **12 months** (312 days) to people who have at least 260 paid PRSI contributions. Jobseeker's Benefit can be paid for a maximum of **9 months** (234 days) to people who have less than 260 paid contributions. (Refers to new claims).
- Live Register Flows** Live Register flows data is sourced from information collected by the Department of Social Protection. The aggregate of new registrations for each month is used in conjunction with the net change over the same period to calculate the outflow from the register. A new registration is defined as anybody on the Live Register in a particular month who was not on it the previous month. Inflows and outflows published in this release do not take account of inter-scheme activity within the Live Register. For example, if a claimant exhausts his/her entitlement to JB and opens a new JA claim this is counted as an outflow in JB and an inflow in JA.
- Live Register Area Analysis** The basis of the area analysis in Live Register statistics is the Department of Social Protection local office of registration. The areas served by Local Employment Offices do not correspond to specific geographic boundaries. Therefore, registrants at a given local office do not necessarily come from a particular region or area which can be precisely delineated e.g. data for the Cork City Local Office of Registration refers to all persons signing on in Cork City but may include persons not resident in Cork City. **The latest available Live Register data by Province, County and Local Office of Registration will be released on the CSO website through the CSO Main Data Dissemination Service, Database Direct one day after the publication of this release.**
- NUTS2 and NUTS3 regions** The Regional classifications are based on the NUTS (Nomenclature of Territorial Units) classification used by Eurostat. The NUTS3 regions correspond to the eight Regional Authorities established under the Local Government Act, 1991 (Regional Authorities) (Establishment) Order, 1993, which came into operation on 1 January 1994. The NUTS2 regions, which were proposed by Government and agreed by Eurostat in 1999, are groupings of the NUTS3 regions.

Border, Midland and Western NUTS2 Region

Border Cavan
Donegal
Leitrim
Louth
Monaghan
Sligo

Midland Laois
Longford
Offaly
Westmeath

West Galway City
Galway County
Mayo
Roscommon

Southern and Eastern NUTS2 Region

Dublin Dublin City
Dun Laoghaire-Rathdown
Fingal
South Dublin

Mid-East Kildare
Meath
Wicklow

Mid-West Clare
Limerick City
Limerick County
North Tipperary

South-East Carlow
Kilkenny
South Tipperary
Waterford City
Waterford County
Wexford

South-West Cork City
Cork County
Kerry

Occupations	Live Register occupational data is sourced from information collected by the Department of Social Protection on the most recent occupation of claimants when they sign on the Live Register. The classification used is based on the UK Standard Occupational Classification (SOC). “No occupation” is an additional category and includes those who have never worked and those who have no stated occupation.
Age by Duration Analysis	Duration of continuous registration on the Live Register was previously compiled on a half-yearly basis (April and October). The Live Register Age by Duration release has now been replaced by a monthly table in this release. The bi-annual release related to the second last Friday of the reference month but the monthly age by duration data since October 2009 corresponds to the end of month Live Register totals. Detailed tables relating to regional and scheme data will continue to be made available on the CSO website through the CSO Main Data Dissemination Service, Database Direct on a bi-annual basis.
Casual and part-time workers	The casual and part-time workers’ figure is based on data supplied by the Department of Social Protection. People may apply for Jobseekers Benefit or Jobseekers Allowance if they only work for part of a week and be included on the Live Register.
Nationality	Data in the nationality grouping table is sourced from information collected by the Department of Social Protection on the nationality of claimants when they first sign on the Live Register.

New Release Format

From July 2010 the Live Register release has been revised and now contains additional tables. This coincides with the discontinuation of both the *Live Register Additional Tables* and *Live Register Age by Duration* releases.

A table containing Live Register flows information has replaced the net weekly change table. Flows data was compiled by CSO until March 2008 when the series was discontinued. The new table on flows contains data dating back to October 2009. It should be noted that the compilation of flows changed when the Department of Social Protection introduced a new IT system in October 2009 and so there is no data available on Live Register flows between March 2008 and October 2009.

While information on the latest number of casual and part-time workers on the Live Register was previously included on the monthly release since March 2002, a table is now contained in the release providing a time-series with additional monthly change information.

Since October 2009 the Department of Social Protection has provided a classification of the Live Register by occupational groupings. This table is now included in the monthly release and refers to the last held occupation that Live Register claimants report.

Live Register tables classified by region and nationality groupings have been added to the new release, as has a monthly table of duration of continuous registration. **More detailed information on geographic breakdowns of the Live Register and duration of continuous registration along with all Live Register published data can be found on the CSO Main Data Dissemination Service, Database Direct on the CSO website –**

<http://www.cso.ie/>

and go to:

- > Database Direct
- > CSO Main Data Dissemination Service
- > Labour Market and Earnings
- > Labour Force
- > Live Register

or click

<http://cso.ie/shorturl.aspx/39>

For further information or assistance use the contact details on the front page of the release or e-mail labour@cso.ie