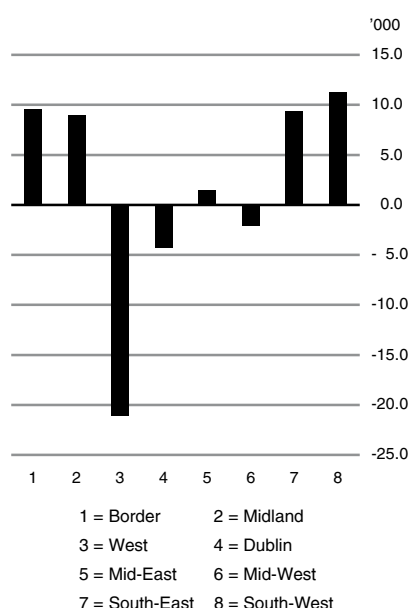


## Quarterly National Household Survey

### Revised Series Post 2002 Census of Population

**Absolute difference between the old and revised regional labour force estimates, q4 2003**



**All persons aged 15 and over in employment (ILO) and unemployed on the basis of the 1996 and 2002 Census of Population**

	1996		2002	
	In Employment	Unemployed	In Employment	Unemployed
<b>Mar-May 1998</b>	1,494.5	126.6	1,494.0	126.4
<b>Mar-May 1999</b>	1,591.1	96.9	1,589.1	96.9
<b>Mar-May 2000</b>	1,670.7	74.9	1,671.4	74.5
<b>Mar-May 2001</b>	1,716.5	65.4	1,721.9	65.1
<b>Mar-May 2002</b>	1,749.9	77.2	1,763.9	77.0
<b>Mar-May 2003</b>	1,778.3	81.4	1,793.4	82.1

This release contains revised headline QNHS figures for all quarters from the fourth quarter of 1997 to the fourth quarter of 2003 at both a regional and a state level. For users convenience data relating to the first quarter of 2004 has also been included. A revised version of the full set of core QNHS tables is available on our website at [www.cso.ie](http://www.cso.ie), under the link for 'Quarterly National Household Survey'.

The QNHS figures have been revised in line with revisions to the sub-annual population estimates which are used as a grossing frame for the data. These population estimates are calculated on a quarterly basis using the Census of Population figures as a base. The final results of the 2002 Census of Population proved to be 20,000 (0.5%) over the population estimate for the second quarter of 2002. All population estimates have been recalculated accordingly.

Given that the difference between the 2002 Census of Population figures and the population estimates was very minor at the State level, the revisions to the QNHS data series have had very little effect on the headline trends within the QNHS. At a regional level, while employment, unemployment and labour force trends have for the most part been maintained there are some differences in absolute terms. *See graphs overleaf and tables 1, 2 & 3.*

Published by the Central Statistics Office, Ireland.

Ardee Road  
Dublin 6  
Ireland

Skehard Road  
Cork  
Ireland

LoCall: 1890 313 414

Tel: +353-1 498 4000  
Fax: +353-1 498 4229

Tel: +353-21 453 5000  
Fax: +353-21 453 5492

Both offices may be contacted through any of these telephone numbers.

CSO on the Web: <http://www.cso.ie>

Director General: Donal Garvey

Enquiries:

Labour Market Statistics Direct Dial (021) 453 5491  
Email: [labour@cso.ie](mailto:labour@cso.ie)

Queries and Sales Information Section, ext 5032  
[information@cso.ie](mailto:information@cso.ie)

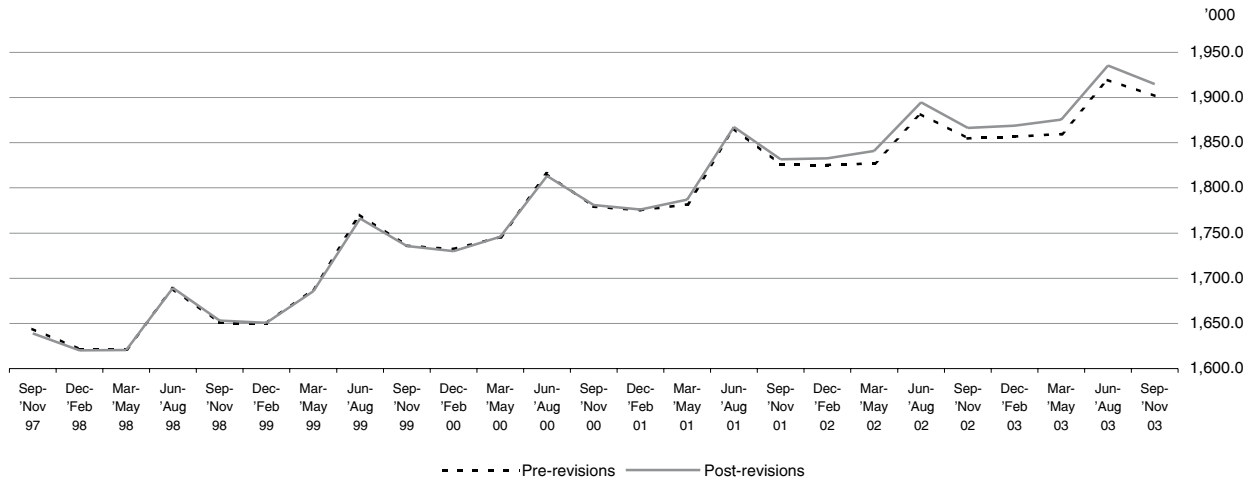
© Central Statistics Office

The contents of this release may be quoted provided the source is given clearly and accurately. Reproduction for own or internal use is permitted.

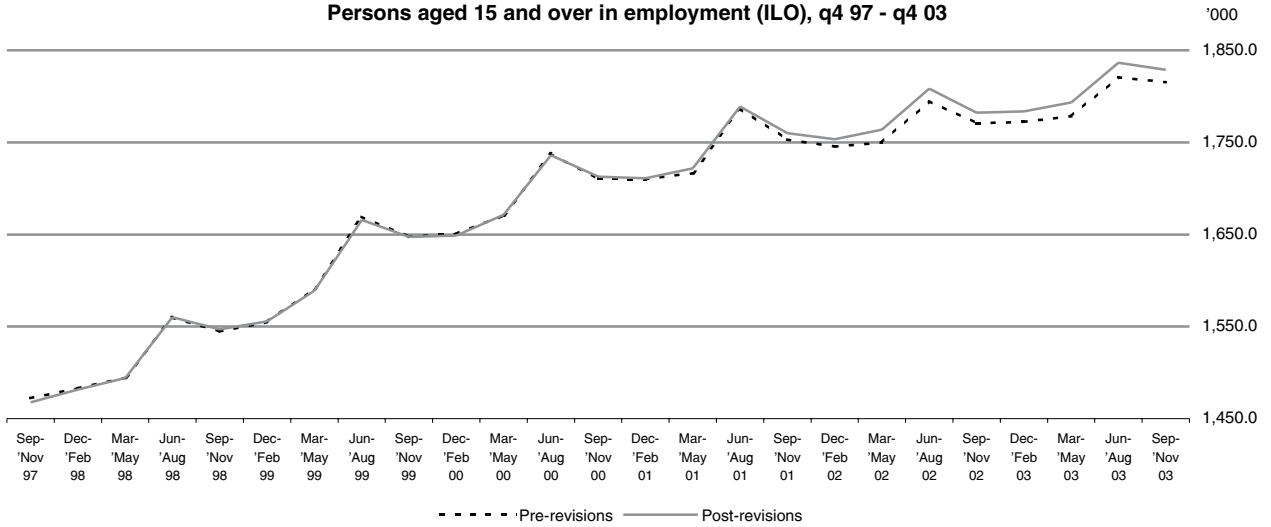
Ref 116/2004

For more information contact Nicola Tickner at 021-4535420, Kieran O'Shea at 021-4535488 or Tricia Brew at 021-4535490.

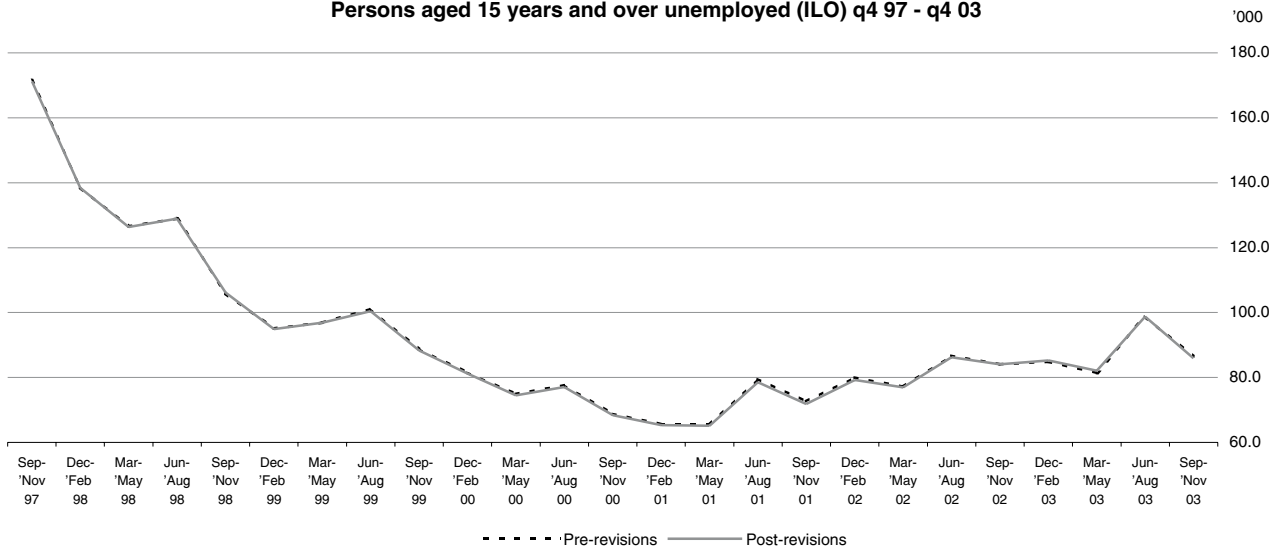
**Persons aged 15 and over in the labour force (ILO) q4 97 - q4 03**



**Persons aged 15 and over in employment (ILO), q4 97 - q4 03**



**Persons aged 15 years and over unemployed (ILO) q4 97 - q4 03**



## Tables

**Table 1 Persons aged 15 years and over classified by sex and ILO Economic Status, September-November 1997 to March-May 1999**

ILO Economic Status	Sep- Nov 97	Dec- Feb 98	Mar- May 98	Jun- Aug 98	Sep- Nov 98	Dec- Feb 99	Mar- May 99
<b>Males</b>							
<b>In labour force</b>	<b>979.6</b>	<b>978.4</b>	<b>979.4</b>	<b>1,016.5</b>	<b>998.5</b>	<b>994.2</b>	<b>1,007.4</b>
In employment:	879.8	894.8	900.7	937.1	932.3	934.2	948.0
full-time	809.2	824.4	830.2	867.2	866.7	870.3	878.2
part-time:	70.6	70.3	70.5	69.9	65.5	63.9	69.9
of which: part-time, not underemployed <sup>1</sup>	58.1	61.3	64.8	65.3	61.2	60.1	66.9
part-time, underemployed <sup>1</sup>	12.4	9.1	5.6	4.5	4.3	3.7	2.9
Unemployed:	99.8	83.6	78.8	79.4	66.2	60.0	59.4
seeking full-time work	93.5	80.1	75.8	75.5	64.4	58.3	56.8
seeking part-time work	6.2	3.5	3.0	3.9	1.8	1.7	2.5
<b>Not in labour force</b>	<b>411.7</b>	<b>423.8</b>	<b>430.1</b>	<b>401.5</b>	<b>427.1</b>	<b>434.2</b>	<b>424.5</b>
Marginally attached to the Labour Force	7.8	10.2	11.0	11.9	11.0	12.6	10.2
Others	403.9	413.6	419.2	389.7	416.2	421.6	414.3
<b>Total males aged 15 or over</b>	<b>1,391.2</b>	<b>1,402.2</b>	<b>1,409.5</b>	<b>1,418.0</b>	<b>1,425.6</b>	<b>1,428.4</b>	<b>1,431.9</b>
<b>Unemployment rate %</b>	<b>10.2</b>	<b>8.5</b>	<b>8.0</b>	<b>7.8</b>	<b>6.6</b>	<b>6.0</b>	<b>5.9</b>
<b>Participation rate %</b>	<b>70.4</b>	<b>69.8</b>	<b>69.5</b>	<b>71.7</b>	<b>70.0</b>	<b>69.6</b>	<b>70.4</b>
<b>Females</b>							
<b>In labour force</b>	<b>659.3</b>	<b>641.7</b>	<b>641.0</b>	<b>672.6</b>	<b>654.8</b>	<b>656.3</b>	<b>678.5</b>
In employment:	587.9	587.0	593.4	623.1	614.9	621.4	641.0
full-time	405.7	406.9	413.6	438.9	430.3	435.3	444.0
part-time:	182.1	180.1	179.8	184.2	184.5	186.1	197.0
of which: part-time, not underemployed <sup>1</sup>	169.1	171.0	175.1	181.0	181.3	183.3	194.0
part-time, underemployed <sup>1</sup>	13.0	9.0	4.7	3.2	3.2	2.9	3.0
Unemployed:	71.4	54.7	47.6	49.5	40.0	34.9	37.5
seeking full-time work	38.5	32.8	29.4	33.9	25.1	22.1	23.2
seeking part-time work	33.0	22.0	18.3	15.6	14.9	12.8	14.3
<b>Not in labour force</b>	<b>780.3</b>	<b>808.8</b>	<b>816.7</b>	<b>793.3</b>	<b>818.3</b>	<b>819.5</b>	<b>800.6</b>
Marginally attached to the Labour Force	9.9	9.0	8.6	8.9	6.1	6.7	6.5
Others	770.5	799.8	808.2	784.3	812.2	812.8	794.1
<b>Total females aged 15 or over</b>	<b>1,439.6</b>	<b>1,450.5</b>	<b>1,457.7</b>	<b>1,465.9</b>	<b>1,473.1</b>	<b>1,475.8</b>	<b>1,479.2</b>
<b>Unemployment rate %</b>	<b>10.8</b>	<b>8.5</b>	<b>7.4</b>	<b>7.4</b>	<b>6.1</b>	<b>5.3</b>	<b>5.5</b>
<b>Participation rate %</b>	<b>45.8</b>	<b>44.2</b>	<b>44.0</b>	<b>45.9</b>	<b>44.5</b>	<b>44.5</b>	<b>45.9</b>
<b>All persons</b>							
<b>In labour force</b>	<b>1,638.9</b>	<b>1,620.1</b>	<b>1,620.4</b>	<b>1,689.1</b>	<b>1,653.3</b>	<b>1,650.5</b>	<b>1,685.9</b>
In employment:	1,467.7	1,481.7	1,494.0	1,560.2	1,547.1	1,555.6	1,589.1
full-time	1,215.0	1,231.3	1,243.8	1,306.2	1,297.1	1,305.6	1,322.2
part-time:	252.7	250.4	250.2	254.0	250.1	250.0	266.9
of which: part-time, not underemployed <sup>1</sup>	227.3	232.3	240.0	246.3	242.5	243.4	261.0
part-time, underemployed <sup>1</sup>	25.4	18.1	10.3	7.7	7.6	6.6	5.9
Unemployed:	171.2	138.4	126.4	128.9	106.2	94.9	96.9
seeking full-time work	132.0	112.9	105.2	109.5	89.5	80.4	80.0
seeking part-time work	39.2	25.5	21.3	19.5	16.7	14.5	16.9
<b>Not in labour force</b>	<b>1,192.0</b>	<b>1,232.6</b>	<b>1,246.8</b>	<b>1,194.8</b>	<b>1,245.4</b>	<b>1,253.7</b>	<b>1,225.1</b>
Marginally attached to the Labour Force	17.7	19.1	19.5	20.8	17.1	19.4	16.8
Others	1,174.3	1,213.5	1,227.3	1,174.0	1,228.4	1,234.4	1,208.4
<b>Total persons aged 15 or over</b>	<b>2,830.8</b>	<b>2,852.7</b>	<b>2,867.3</b>	<b>2,883.9</b>	<b>2,898.8</b>	<b>2,904.2</b>	<b>2,911.1</b>
<b>Unemployment rate %</b>	<b>10.4</b>	<b>8.5</b>	<b>7.8</b>	<b>7.6</b>	<b>6.4</b>	<b>5.7</b>	<b>5.7</b>
<b>Participation rate %</b>	<b>57.9</b>	<b>56.8</b>	<b>56.5</b>	<b>58.6</b>	<b>57.0</b>	<b>56.8</b>	<b>57.9</b>

<sup>1</sup> See Background Notes.

**Table 1 continued Persons aged 15 years and over classified by sex and ILO Economic Status, June-August 1999 to December-February 2001**

ILO Economic Status	Jun- Aug 99	Sep- Nov 99	Dec- Feb 00	Mar- May 00	Jun- Aug 00	Sep- Nov 00	Dec- Feb 01
<b>Males</b>							
<b>In labour force</b>	<b>1,048.4</b>	<b>1,034.0</b>	<b>1,030.7</b>	<b>1,037.6</b>	<b>1,070.7</b>	<b>1,053.4</b>	<b>1,050.5</b>
In employment:	989.9	981.2	981.3	992.6	1,024.2	1,012.1	1,011.7
full-time	915.2	912.2	911.8	920.8	955.9	944.0	943.8
part-time:	74.7	69.0	69.6	71.8	68.4	68.1	67.9
of which: part-time, not underemployed <sup>1</sup>	71.8	66.3	67.8	70.1	66.8	67.0	66.8
part-time, underemployed <sup>1</sup>	2.9	2.7	1.8	1.7	1.6	1.1	1.1
Unemployed:	58.5	52.8	49.4	44.9	46.5	41.3	38.8
seeking full-time work	55.4	50.1	47.2	42.6	43.5	39.1	36.8
seeking part-time work	3.2	2.8	2.2	2.3	2.9	2.2	2.0
<b>Not in labour force</b>	<b>390.0</b>	<b>415.7</b>	<b>421.6</b>	<b>420.2</b>	<b>393.0</b>	<b>425.7</b>	<b>431.7</b>
Marginally attached to the Labour Force	10.6	9.4	9.6	7.8	8.8	7.9	8.7
Others	379.4	406.3	412.0	412.4	384.2	417.8	422.9
<b>Total males aged 15 or over</b>	<b>1,438.4</b>	<b>1,449.7</b>	<b>1,452.3</b>	<b>1,457.8</b>	<b>1,463.7</b>	<b>1,479.1</b>	<b>1,482.2</b>
<b>Unemployment rate %</b>	<b>5.6</b>	<b>5.1</b>	<b>4.8</b>	<b>4.3</b>	<b>4.3</b>	<b>3.9</b>	<b>3.7</b>
<b>Participation rate %</b>	<b>72.9</b>	<b>71.3</b>	<b>71.0</b>	<b>71.2</b>	<b>73.2</b>	<b>71.2</b>	<b>70.9</b>
<b>Females</b>							
<b>In labour force</b>	<b>717.7</b>	<b>701.7</b>	<b>699.2</b>	<b>708.4</b>	<b>742.6</b>	<b>727.6</b>	<b>725.6</b>
In employment:	675.9	666.2	667.4	678.8	711.9	700.5	699.2
full-time	473.4	464.5	463.3	469.3	501.5	488.8	483.3
part-time:	202.5	201.6	204.1	209.5	210.4	211.7	215.9
of which: part-time, not underemployed <sup>1</sup>	200.5	199.6	202.2	207.6	208.7	210.3	214.8
part-time, underemployed <sup>1</sup>	1.9	2.0	1.8	1.9	1.7	1.4	1.2
Unemployed:	41.8	35.5	31.8	29.6	30.7	27.1	26.4
seeking full-time work	27.4	22.4	19.1	18.3	19.3	15.9	15.2
seeking part-time work	14.5	13.1	12.7	11.2	11.3	11.2	11.3
<b>Not in labour force</b>	<b>767.7</b>	<b>794.3</b>	<b>799.4</b>	<b>795.4</b>	<b>766.5</b>	<b>795.6</b>	<b>800.4</b>
Marginally attached to the Labour Force	7.2	6.6	6.3	4.4	5.5	4.2	4.1
Others	760.5	787.7	793.1	790.9	761.0	791.4	796.2
<b>Total females aged 15 or over</b>	<b>1,485.4</b>	<b>1,496.0</b>	<b>1,498.5</b>	<b>1,503.7</b>	<b>1,509.1</b>	<b>1,523.2</b>	<b>1,526.0</b>
<b>Unemployment rate %</b>	<b>5.8</b>	<b>5.1</b>	<b>4.5</b>	<b>4.2</b>	<b>4.1</b>	<b>3.7</b>	<b>3.6</b>
<b>Participation rate %</b>	<b>48.3</b>	<b>46.9</b>	<b>46.7</b>	<b>47.1</b>	<b>49.2</b>	<b>47.8</b>	<b>47.6</b>
<b>All persons</b>							
<b>In labour force</b>	<b>1,766.1</b>	<b>1,735.7</b>	<b>1,729.9</b>	<b>1,745.9</b>	<b>1,813.3</b>	<b>1,781.0</b>	<b>1,776.2</b>
In employment:	1,665.8	1,647.4	1,648.7	1,671.4	1,736.1	1,712.6	1,710.9
full-time	1,388.6	1,376.7	1,375.1	1,390.1	1,457.4	1,432.8	1,427.1
part-time:	277.1	270.6	273.6	281.4	278.7	279.8	283.8
of which: part-time, not underemployed <sup>1</sup>	272.3	265.9	270.0	277.7	275.4	277.3	281.5
part-time, underemployed <sup>1</sup>	4.8	4.7	3.6	3.6	3.3	2.5	2.2
Unemployed:	100.4	88.3	81.2	74.5	77.1	68.4	65.3
seeking full-time work	82.8	72.5	66.2	60.9	62.9	55.0	52.0
seeking part-time work	17.6	15.9	14.9	13.5	14.3	13.4	13.3
<b>Not in labour force</b>	<b>1,157.7</b>	<b>1,210.0</b>	<b>1,221.0</b>	<b>1,215.6</b>	<b>1,159.5</b>	<b>1,221.3</b>	<b>1,232.0</b>
Marginally attached to the Labour Force	17.7	16.0	15.9	12.2	14.3	12.1	12.8
Others	1,139.9	1,194.0	1,205.1	1,203.4	1,145.2	1,209.2	1,219.2
<b>Total persons aged 15 or over</b>	<b>2,923.8</b>	<b>2,945.7</b>	<b>2,950.9</b>	<b>2,961.5</b>	<b>2,972.8</b>	<b>3,002.4</b>	<b>3,008.2</b>
<b>Unemployment rate %</b>	<b>5.7</b>	<b>5.1</b>	<b>4.7</b>	<b>4.3</b>	<b>4.3</b>	<b>3.8</b>	<b>3.7</b>
<b>Participation rate %</b>	<b>60.4</b>	<b>58.9</b>	<b>58.6</b>	<b>59.0</b>	<b>61.0</b>	<b>59.3</b>	<b>59.0</b>

<sup>1</sup> See Background Notes.

**Table 1 continued Persons aged 15 years and over classified by sex and ILO Economic Status, March-May 2001 to June-August 2002**

ILO Economic Status	Mar- May 01	Jun- Aug 01	Sep- Nov 01	Dec- Feb 02	Mar- May 02	Jun- Aug 02
<b>Males</b>						
<b>In labour force</b>	<b>1,058.8</b>	<b>1,097.9</b>	<b>1,077.6</b>	<b>1,073.0</b>	<b>1,076.6</b>	<b>1,105.3</b>
In employment:	1,019.0	1,051.0	1,032.9	1,023.3	1,027.7	1,052.9
full-time	953.0	980.6	966.6	953.1	961.1	986.4
part-time:	66.1	70.4	66.3	70.3	66.6	66.5
<i>of which: part-time, not underemployed<sup>1</sup></i>	64.9	69.4	65.1	68.9	65.2	65.0
<i>part-time, underemployed<sup>1</sup></i>	1.2	1.1	1.2	1.4	1.4	1.6
Unemployed:	39.8	46.9	44.7	49.6	48.8	52.4
seeking full-time work	37.5	43.9	42.0	47.4	46.7	49.6
seeking part-time work	2.3	3.1	2.7	2.3	2.2	2.8
<b>Not in labour force</b>	<b>429.4</b>	<b>398.3</b>	<b>430.5</b>	<b>441.2</b>	<b>445.6</b>	<b>423.7</b>
Marginally attached to the Labour Force	7.4	7.2	7.2	7.8	7.7	8.0
Others	422.0	391.1	423.3	433.4	437.9	415.8
<b>Total males aged 15 or over</b>	<b>1,488.2</b>	<b>1,496.2</b>	<b>1,508.2</b>	<b>1,514.2</b>	<b>1,522.1</b>	<b>1,529.0</b>
<b>Unemployment rate %</b>	<b>3.8</b>	<b>4.3</b>	<b>4.2</b>	<b>4.6</b>	<b>4.5</b>	<b>4.7</b>
<b>Participation rate %</b>	<b>71.1</b>	<b>73.4</b>	<b>71.5</b>	<b>70.9</b>	<b>70.7</b>	<b>72.3</b>
<b>Females</b>						
<b>In labour force</b>	<b>728.2</b>	<b>769.5</b>	<b>754.0</b>	<b>759.7</b>	<b>764.3</b>	<b>789.3</b>
In employment:	702.8	737.9	727.0	730.1	736.1	755.5
full-time	482.5	514.5	505.0	504.9	510.4	527.9
part-time:	220.4	223.4	222.0	225.2	225.7	227.6
<i>of which: part-time, not underemployed<sup>1</sup></i>	219.1	222.0	220.7	224.1	224.2	226.4
<i>part-time, underemployed<sup>1</sup></i>	1.3	1.4	1.3	1.2	1.5	1.2
Unemployed:	25.4	31.6	27.0	29.6	28.2	33.8
seeking full-time work	15.8	20.1	17.1	19.4	18.5	23.6
seeking part-time work	9.5	11.5	9.9	10.2	9.7	10.2
<b>Not in labour force</b>	<b>803.3</b>	<b>770.6</b>	<b>798.8</b>	<b>799.5</b>	<b>803.3</b>	<b>785.4</b>
Marginally attached to the Labour Force	3.3	5.1	4.3	4.5	3.4	4.8
Others	800.0	765.5	794.5	795.0	799.9	780.6
<b>Total females aged 15 or over</b>	<b>1,531.5</b>	<b>1,540.0</b>	<b>1,552.8</b>	<b>1,559.2</b>	<b>1,567.7</b>	<b>1,574.7</b>
<b>Unemployment rate %</b>	<b>3.5</b>	<b>4.1</b>	<b>3.6</b>	<b>3.9</b>	<b>3.7</b>	<b>4.3</b>
<b>Participation rate %</b>	<b>47.5</b>	<b>50.0</b>	<b>48.6</b>	<b>48.7</b>	<b>48.8</b>	<b>50.1</b>
<b>All persons</b>						
<b>In labour force</b>	<b>1,787.0</b>	<b>1,867.4</b>	<b>1,831.6</b>	<b>1,832.7</b>	<b>1,840.9</b>	<b>1,894.6</b>
In employment:	1,721.9	1,788.9	1,759.9	1,753.5	1,763.9	1,808.4
full-time	1,435.4	1,495.0	1,471.6	1,458.0	1,471.5	1,514.3
part-time:	286.5	293.8	288.3	295.5	292.3	294.1
<i>of which: part-time, not underemployed<sup>1</sup></i>	284.0	291.3	285.8	292.9	289.4	291.3
<i>part-time, underemployed<sup>1</sup></i>	2.5	2.5	2.5	2.6	2.9	2.7
Unemployed:	65.1	78.5	71.8	79.2	77.0	86.2
seeking full-time work	53.3	63.9	59.1	66.8	65.2	73.2
seeking part-time work	11.8	14.6	12.6	12.5	11.8	13.0
<b>Not in labour force</b>	<b>1,232.6</b>	<b>1,168.9</b>	<b>1,229.3</b>	<b>1,240.8</b>	<b>1,248.9</b>	<b>1,209.2</b>
Marginally attached to the Labour Force	10.7	12.3	11.5	12.3	11.1	12.7
Others	1,222.0	1,156.5	1,217.8	1,228.5	1,237.8	1,196.4
<b>Total persons aged 15 or over</b>	<b>3,019.7</b>	<b>3,036.3</b>	<b>3,061.0</b>	<b>3,073.4</b>	<b>3,089.8</b>	<b>3,103.7</b>
<b>Unemployment rate %</b>	<b>3.6</b>	<b>4.2</b>	<b>3.9</b>	<b>4.3</b>	<b>4.2</b>	<b>4.6</b>
<b>Participation rate %</b>	<b>59.2</b>	<b>61.5</b>	<b>59.8</b>	<b>59.6</b>	<b>59.6</b>	<b>61.0</b>

<sup>1</sup> See Background Notes.

**Table 1 continued Persons aged 15 years and over classified by sex and ILO Economic Status, September-November 2002 to December-February 2004**

'000

ILO Economic Status	Sep- Nov 02	Dec- Feb 03	Mar- May 03	Jun- Aug 03	Sep- Nov 03	Dec- Feb 04
<b>Males</b>						
<b>In labour force</b>	<b>1,092.4</b>	<b>1,091.4</b>	<b>1,092.7</b>	<b>1,123.0</b>	<b>1,114.5</b>	<b>1,118.4</b>
In employment:	1,040.5	1,037.3	1,040.9	1,063.6	1,061.1	1,065.8
full-time	975.2	967.7	971.1	991.1	994.9	997.0
part-time:	65.3	69.6	69.8	72.5	66.3	68.8
of which: part-time, not underemployed <sup>1</sup>	64.0	67.7	68.1	70.4	64.3	66.9
part-time, underemployed <sup>1</sup>	1.3	1.9	1.7	2.1	2.0	1.9
Unemployed:	51.9	54.2	51.7	59.4	53.3	52.6
seeking full-time work	49.4	51.1	48.7	55.0	49.6	50.1
seeking part-time work	2.4	3.0	3.0	4.4	3.7	2.5
<b>Not in labour force</b>	<b>447.2</b>	<b>455.0</b>	<b>457.1</b>	<b>433.4</b>	<b>452.1</b>	<b>454.1</b>
Marginally attached to the Labour Force	7.7	8.1	8.2	8.6	7.0	7.8
Others	439.4	446.9	448.9	424.8	445.1	446.2
<b>Total males aged 15 or over</b>	<b>1,539.6</b>	<b>1,546.4</b>	<b>1,549.8</b>	<b>1,556.4</b>	<b>1,566.6</b>	<b>1,572.4</b>
<b>Unemployment rate %</b>	<b>4.7</b>	<b>5.0</b>	<b>4.7</b>	<b>5.3</b>	<b>4.8</b>	<b>4.7</b>
<b>Participation rate %</b>	<b>71.0</b>	<b>70.6</b>	<b>70.5</b>	<b>72.2</b>	<b>71.1</b>	<b>71.1</b>
<b>Females</b>						
<b>In labour force</b>	<b>773.9</b>	<b>777.3</b>	<b>782.8</b>	<b>812.3</b>	<b>800.3</b>	<b>801.1</b>
In employment:	741.7	746.3	752.5	772.8	767.8	770.1
full-time	512.3	514.8	517.0	534.6	529.2	530.2
part-time:	229.5	231.6	235.4	238.2	238.6	240.0
of which: part-time, not underemployed <sup>1</sup>	228.2	230.0	233.7	236.0	236.6	238.1
part-time, underemployed <sup>1</sup>	1.3	1.5	1.7	2.3	2.0	1.9
Unemployed:	32.2	31.0	30.4	39.4	32.6	31.0
seeking full-time work	19.6	20.5	20.2	27.9	21.3	20.7
seeking part-time work	12.6	10.5	10.1	11.5	11.2	10.3
<b>Not in labour force</b>	<b>811.0</b>	<b>815.2</b>	<b>812.5</b>	<b>790.5</b>	<b>813.0</b>	<b>818.5</b>
Marginally attached to the Labour Force	4.5	4.6	3.9	6.0	3.9	4.4
Others	806.5	810.5	808.6	784.5	809.1	814.1
<b>Total females aged 15 or over</b>	<b>1,584.9</b>	<b>1,592.5</b>	<b>1,595.3</b>	<b>1,602.8</b>	<b>1,613.4</b>	<b>1,619.6</b>
<b>Unemployment rate %</b>	<b>4.2</b>	<b>4.0</b>	<b>3.9</b>	<b>4.9</b>	<b>4.1</b>	<b>3.9</b>
<b>Participation rate %</b>	<b>48.8</b>	<b>48.8</b>	<b>49.1</b>	<b>50.7</b>	<b>49.6</b>	<b>49.5</b>
<b>All persons</b>						
<b>In labour force</b>	<b>1,866.3</b>	<b>1,868.7</b>	<b>1,875.5</b>	<b>1,935.3</b>	<b>1,914.8</b>	<b>1,919.5</b>
In employment:	1,782.3	1,783.6	1,793.4	1,836.4	1,828.9	1,835.9
full-time	1,487.5	1,482.4	1,488.2	1,525.7	1,524.1	1,527.1
part-time:	294.8	301.1	305.2	310.7	304.8	308.8
of which: part-time, not underemployed <sup>1</sup>	292.2	297.7	301.7	306.4	300.9	305.0
part-time, underemployed <sup>1</sup>	2.6	3.4	3.5	4.3	3.9	3.8
Unemployed:	84.1	85.2	82.1	98.8	85.9	83.6
seeking full-time work	69.0	71.6	69.0	82.9	70.9	70.8
seeking part-time work	15.0	13.5	13.1	15.9	15.0	12.8
<b>Not in labour force</b>	<b>1,258.1</b>	<b>1,270.1</b>	<b>1,269.6</b>	<b>1,223.9</b>	<b>1,265.1</b>	<b>1,272.5</b>
Marginally attached to the Labour Force	12.2	12.7	12.1	14.6	10.9	12.2
Others	1,245.9	1,257.4	1,257.5	1,209.3	1,254.2	1,260.3
<b>Total persons aged 15 or over</b>	<b>3,124.5</b>	<b>3,138.9</b>	<b>3,145.1</b>	<b>3,159.2</b>	<b>3,179.9</b>	<b>3,192.0</b>
<b>Unemployment rate %</b>	<b>4.5</b>	<b>4.6</b>	<b>4.4</b>	<b>5.1</b>	<b>4.5</b>	<b>4.4</b>
<b>Participation rate %</b>	<b>59.7</b>	<b>59.5</b>	<b>59.6</b>	<b>61.3</b>	<b>60.2</b>	<b>60.1</b>

<sup>1</sup> See Background Notes.

**Table 2 Persons aged 15 years and over classified by NUTS2 regions<sup>1</sup> and ILO Economic Status**

Region	In employment	Unemployed	In labour force	Unemployment rate	Participation rate
	'000	'000	'000	%	%
<b>Border, Midland and Western</b>					
Sep-Nov 1997	357.0	44.9	401.9	11.2	54.3
Dec-Feb 1998	355.4	39.0	394.4	9.9	52.9
Mar-May 1998	362.0	33.1	395.1	8.4	52.8
Jun-Aug 1998	377.6	33.5	411.1	8.1	54.7
Sep-Nov 1998	374.5	30.1	404.7	7.4	53.6
Dec-Feb 1999	376.1	27.6	403.8	6.8	53.4
Mar-May 1999	387.7	28.6	416.3	6.9	54.9
Jun-Aug 1999	403.1	29.0	432.1	6.7	56.8
Sep-Nov 1999	399.6	27.3	427.0	6.4	55.6
Dec-Feb 2000	401.9	25.9	427.8	6.0	55.6
Mar-May 2000	407.5	24.4	431.9	5.7	56.0
Jun-Aug 2000	421.1	23.8	444.9	5.3	57.4
Sep-Nov 2000	421.1	20.6	441.7	4.7	56.5
Dec-Feb 2001	421.1	20.8	441.9	4.7	56.4
Mar-May 2001	423.8	19.8	443.6	4.5	56.4
Jun-Aug 2001	441.8	24.2	466.0	5.2	58.9
Sep-Nov 2001	434.2	23.4	457.6	5.1	57.2
Dec-Feb 2002	433.7	25.0	458.7	5.4	57.1
Mar-May 2002	437.7	24.8	462.4	5.4	57.2
Jun-Aug 2002	448.6	25.8	474.4	5.4	58.3
Sep-Nov 2002	445.8	24.3	470.1	5.2	57.4
Dec-Feb 2003	447.8	25.1	472.9	5.3	57.4
Mar-May 2003	448.9	24.5	473.4	5.2	57.3
Jun-Aug 2003	462.6	26.4	489.0	5.4	58.8
Sep-Nov 2003	465.9	23.8	489.7	4.9	58.3
Dec-Feb 2004	473.8	22.3	496.1	4.5	58.8
<b>Southern and Eastern</b>					
Sep-Nov 1997	1,110.7	126.3	1,236.9	10.2	59.2
Dec-Feb 1998	1,126.3	99.4	1,225.7	8.1	58.2
Mar-May 1998	1,132.0	93.3	1,225.3	7.6	57.8
Jun-Aug 1998	1,182.6	95.4	1,278.0	7.5	59.9
Sep-Nov 1998	1,172.6	76.1	1,248.7	6.1	58.3
Dec-Feb 1999	1,179.4	67.3	1,246.7	5.4	58.0
Mar-May 1999	1,201.4	68.3	1,269.6	5.4	59.0
Jun-Aug 1999	1,262.7	71.3	1,334.0	5.3	61.7
Sep-Nov 1999	1,247.7	61.0	1,308.7	4.7	60.1
Dec-Feb 2000	1,246.8	55.3	1,302.2	4.2	59.7
Mar-May 2000	1,264.0	50.1	1,314.0	3.8	60.0
Jun-Aug 2000	1,315.0	53.4	1,368.4	3.9	62.3
Sep-Nov 2000	1,291.5	47.8	1,339.3	3.6	60.3
Dec-Feb 2001	1,289.8	44.5	1,334.3	3.3	60.0
Mar-May 2001	1,298.1	45.3	1,343.4	3.4	60.2
Jun-Aug 2001	1,347.1	54.3	1,401.4	3.9	62.4
Sep-Nov 2001	1,325.7	48.3	1,374.0	3.5	60.8
Dec-Feb 2002	1,319.8	54.2	1,374.0	3.9	60.5
Mar-May 2002	1,326.2	52.3	1,378.4	3.8	60.4
Jun-Aug 2002	1,359.8	60.4	1,420.2	4.3	62.0
Sep-Nov 2002	1,336.5	59.7	1,396.2	4.3	60.6
Dec-Feb 2003	1,335.8	60.0	1,395.8	4.3	60.3
Mar-May 2003	1,344.5	57.6	1,402.1	4.1	60.5
Jun-Aug 2003	1,373.9	72.4	1,446.3	5.0	62.1
Sep-Nov 2003	1,363.0	62.1	1,425.1	4.4	60.9
Dec-Feb 2004	1,362.1	61.3	1,423.4	4.3	60.6

<sup>1</sup> See Background Notes.



**Table 2 continued Persons aged 15 years and over classified by NUTS2 regions<sup>1</sup> and ILO Economic Status**

Region	In employment	Unemployed	In labour force	Unemployment rate	Participation rate
	'000	'000	'000	%	%
<b>State</b>					
Sep-Nov 1997	1,467.7	171.2	1,638.9	10.4	57.9
Dec-Feb 1998	1,481.7	138.4	1,620.1	8.5	56.8
Mar-May 1998	1,494.0	126.4	1,620.4	7.8	56.5
Jun-Aug 1998	1,560.2	128.9	1,689.1	7.6	58.6
Sep-Nov 1998	1,547.1	106.2	1,653.3	6.4	57.0
Dec-Feb 1999	1,555.6	94.9	1,650.5	5.7	56.8
Mar-May 1999	1,589.1	96.9	1,685.9	5.7	57.9
Jun-Aug 1999	1,665.8	100.4	1,766.1	5.7	60.4
Sep-Nov 1999	1,647.4	88.3	1,735.7	5.1	58.9
Dec-Feb 2000	1,648.7	81.2	1,729.9	4.7	58.6
Mar-May 2000	1,671.4	74.5	1,745.9	4.3	59.0
Jun-Aug 2000	1,736.1	77.1	1,813.3	4.3	61.0
Sep-Nov 2000	1,712.6	68.4	1,781.0	3.8	59.3
Dec-Feb 2001	1,710.9	65.3	1,776.2	3.7	59.0
Mar-May 2001	1,721.9	65.1	1,787.0	3.6	59.2
Jun-Aug 2001	1,788.9	78.5	1,867.4	4.2	61.5
Sep-Nov 2001	1,759.9	71.8	1,831.6	3.9	59.8
Dec-Feb 2002	1,753.5	79.2	1,832.7	4.3	59.6
Mar-May 2002	1,763.9	77.0	1,840.9	4.2	59.6
Jun-Aug 2002	1,808.4	86.2	1,894.6	4.6	61.0
Sep-Nov 2002	1,782.3	84.1	1,866.3	4.5	59.7
Dec-Feb 2003	1,783.6	85.2	1,868.7	4.6	59.5
Mar-May 2003	1,793.4	82.1	1,875.5	4.4	59.6
Jun-Aug 2003	1,836.4	98.8	1,935.3	5.1	61.3
Sep-Nov 2003	1,828.9	85.9	1,914.8	4.5	60.2
Dec-Feb 2004	1,835.9	83.6	1,919.5	4.4	60.1

<sup>1</sup> See Background Notes.

**Table 3 Persons aged 15 years and over classified by NUTS3 regions<sup>1</sup> and ILO Economic Status**

Region		In employment	Unemployed	In labour force	Unemployment rate	Participation rate
		'000	'000	'000	%	%
<b>Border</b>						
	Sep-Nov 1997	144.3	21.9	166.3	13.2	53.5
	Dec-Feb 1998	143.5	20.0	163.4	12.2	52.2
	Mar-May 1998	146.9	16.9	163.8	10.3	52.2
	Jun-Aug 1998	152.3	15.8	168.1	9.4	53.2
	Sep-Nov 1998	152.0	14.8	166.8	8.9	52.6
	Dec-Feb 1999	153.6	13.9	167.5	8.3	52.7
	Mar-May 1999	157.8	15.0	172.8	8.7	54.2
	Jun-Aug 1999	162.6	15.2	177.8	8.5	55.6
	Sep-Nov 1999	159.5	14.7	174.3	8.5	54.1
	Dec-Feb 2000	160.8	12.6	173.4	7.3	53.7
	Mar-May 2000	164.2	11.6	175.8	6.6	54.3
	Jun-Aug 2000	169.0	10.5	179.5	5.8	55.3
	Sep-Nov 2000	170.7	9.7	180.4	5.4	55.1
	Dec-Feb 2001	170.9	10.4	181.3	5.7	55.3
	Mar-May 2001	173.1	10.0	183.0	5.4	55.7
	Jun-Aug 2001	175.9	12.5	188.4	6.6	57.1
	Sep-Nov 2001	174.3	11.6	185.9	6.3	55.9
	Dec-Feb 2002	172.0	12.5	184.5	6.8	55.3
	Mar-May 2002	173.5	12.4	185.9	6.7	55.5
	Jun-Aug 2002	176.4	12.8	189.2	6.7	56.2
	Sep-Nov 2002	176.5	12.8	189.4	6.8	55.8
	Dec-Feb 2003	178.1	11.8	189.9	6.2	55.7
	Mar-May 2003	177.4	12.0	189.4	6.4	55.5
	Jun-Aug 2003	184.2	12.1	196.4	6.2	57.2
	Sep-Nov 2003	185.9	11.7	197.6	5.9	57.2
	Dec-Feb 2004	190.1	10.8	201.0	5.4	57.6
<b>Midland</b>						
	Sep-Nov 1997	77.3	8.3	85.6	9.7	54.3
	Dec-Feb 1998	76.3	7.9	84.2	9.3	53.0
	Mar-May 1998	78.9	6.8	85.7	7.9	53.6
	Jun-Aug 1998	81.8	7.3	89.1	8.2	55.3
	Sep-Nov 1998	80.1	6.7	86.8	7.8	53.6
	Dec-Feb 1999	79.2	5.9	85.1	6.9	52.4
	Mar-May 1999	83.3	5.8	89.1	6.5	54.6
	Jun-Aug 1999	86.7	6.4	93.2	6.9	56.9
	Sep-Nov 1999	86.7	5.4	92.1	5.9	55.9
	Dec-Feb 2000	86.2	6.0	92.2	6.5	55.9
	Mar-May 2000	88.7	5.1	93.8	5.4	56.6
	Jun-Aug 2000	91.3	5.4	96.6	5.5	58.1
	Sep-Nov 2000	90.8	4.4	95.2	4.6	56.6
	Dec-Feb 2001	90.8	3.6	94.4	3.8	56.0
	Mar-May 2001	91.0	3.5	94.5	3.7	55.8
	Jun-Aug 2001	96.1	4.2	100.4	4.2	58.9
	Sep-Nov 2001	93.7	4.1	97.8	4.2	56.9
	Dec-Feb 2002	94.7	4.0	98.7	4.1	57.2
	Mar-May 2002	96.9	3.9	100.8	3.9	58.1
	Jun-Aug 2002	100.3	4.3	104.6	4.1	59.8
	Sep-Nov 2002	97.6	4.2	101.8	4.1	57.8
	Dec-Feb 2003	98.6	4.6	103.2	4.4	58.3
	Mar-May 2003	100.7	5.5	106.2	5.2	59.8
	Jun-Aug 2003	102.6	5.5	108.2	5.1	60.4
	Sep-Nov 2003	102.0	4.3	106.3	4.0	58.9
	Dec-Feb 2004	104.6	4.6	109.2	4.2	59.7

<sup>1</sup> See Background Notes.

**Table 3 continued Persons aged 15 years and over classified by NUTS3 regions<sup>1</sup> and ILO Economic Status**

Region	In employment	Unemployed	In labour force	Unemployment rate	Participation rate
	'000	'000	'000	%	%
<b>West</b>					
Sep-Nov 1997	135.4	14.7	150.1	9.8	55.1
Dec-Feb 1998	135.6	11.1	146.7	7.6	53.6
Mar-May 1998	136.2	9.4	145.6	6.4	53.0
Jun-Aug 1998	143.5	10.4	153.9	6.7	55.9
Sep-Nov 1998	142.4	8.5	151.0	5.7	54.8
Dec-Feb 1999	143.3	7.8	151.1	5.2	54.8
Mar-May 1999	146.6	7.8	154.4	5.1	55.9
Jun-Aug 1999	153.7	7.4	161.1	4.6	58.0
Sep-Nov 1999	153.4	7.2	160.6	4.5	57.3
Dec-Feb 2000	154.8	7.3	162.1	4.5	57.7
Mar-May 2000	154.6	7.7	162.4	4.8	57.5
Jun-Aug 2000	160.8	7.9	168.7	4.7	59.5
Sep-Nov 2000	159.7	6.5	166.2	3.9	58.0
Dec-Feb 2001	159.4	6.8	166.1	4.1	57.8
Mar-May 2001	159.8	6.3	166.0	3.8	57.5
Jun-Aug 2001	169.7	7.5	177.3	4.2	60.8
Sep-Nov 2001	166.2	7.7	173.9	4.4	58.9
Dec-Feb 2002	167.0	8.5	175.5	4.8	59.0
Mar-May 2002	167.3	8.5	175.8	4.8	58.6
Jun-Aug 2002	171.9	8.7	180.6	4.8	59.7
Sep-Nov 2002	171.6	7.3	178.9	4.1	58.8
Dec-Feb 2003	171.1	8.7	179.8	4.8	58.8
Mar-May 2003	170.8	7.0	177.8	3.9	57.8
Jun-Aug 2003	175.7	8.8	184.5	4.8	59.7
Sep-Nov 2003	177.9	7.9	185.7	4.2	59.4
Dec-Feb 2004	179.1	6.8	185.9	3.7	59.5
<b>Dublin</b>					
Sep-Nov 1997	472.5	56.4	528.9	10.7	62.5
Dec-Feb 1998	479.2	40.1	519.3	7.7	61.0
Mar-May 1998	479.5	37.4	516.9	7.2	60.4
Jun-Aug 1998	497.0	39.0	535.9	7.3	62.4
Sep-Nov 1998	494.7	30.2	524.8	5.7	61.0
Dec-Feb 1999	498.4	26.3	524.6	5.0	60.9
Mar-May 1999	506.0	25.4	531.4	4.8	61.6
Jun-Aug 1999	525.8	25.1	550.9	4.5	63.6
Sep-Nov 1999	520.4	21.7	542.1	4.0	62.2
Dec-Feb 2000	523.0	21.4	544.4	3.9	62.3
Mar-May 2000	528.4	18.9	547.2	3.4	62.5
Jun-Aug 2000	548.7	19.3	568.0	3.4	64.6
Sep-Nov 2000	543.1	16.6	559.7	3.0	63.2
Dec-Feb 2001	545.0	14.4	559.4	2.6	63.1
Mar-May 2001	542.7	16.5	559.2	3.0	62.9
Jun-Aug 2001	556.8	19.6	576.4	3.4	64.5
Sep-Nov 2001	551.9	17.9	569.8	3.1	63.3
Dec-Feb 2002	547.5	20.3	567.8	3.6	62.9
Mar-May 2002	545.9	20.4	566.3	3.6	62.4
Jun-Aug 2002	551.4	24.3	575.8	4.2	63.3
Sep-Nov 2002	549.6	23.7	573.3	4.1	62.7
Dec-Feb 2003	548.4	24.6	573.0	4.3	62.4
Mar-May 2003	548.2	21.9	570.1	3.8	62.1
Jun-Aug 2003	553.9	28.1	582.0	4.8	63.3
Sep-Nov 2003	554.1	24.8	578.8	4.3	62.7
Dec-Feb 2004	548.7	25.1	573.8	4.4	62.0

<sup>1</sup> See Background Notes.

**Table 3 continued Persons aged 15 years and over classified by NUTS3 regions<sup>1</sup> and ILO Economic Status**

Region	In employment	Unemployed	In labour force	Unemployment rate	Participation rate
	'000	'000	'000	%	%
<b>Mid-East</b>					
Sep-Nov 1997	151.6	14.0	165.6	8.4	60.6
Dec-Feb 1998	151.8	13.0	164.8	7.9	59.6
Mar-May 1998	156.3	11.9	168.2	7.1	60.3
Jun-Aug 1998	163.9	11.8	175.7	6.7	62.2
Sep-Nov 1998	163.9	8.4	172.3	4.9	60.3
Dec-Feb 1999	164.9	7.6	172.5	4.4	60.1
Mar-May 1999	170.3	7.5	177.8	4.2	61.7
Jun-Aug 1999	177.7	9.1	186.9	4.9	64.4
Sep-Nov 1999	176.1	7.8	183.8	4.2	62.6
Dec-Feb 2000	176.4	7.3	183.8	4.0	62.4
Mar-May 2000	178.0	6.9	184.9	3.7	62.4
Jun-Aug 2000	185.3	7.3	192.6	3.8	64.6
Sep-Nov 2000	184.1	6.4	190.6	3.4	62.7
Dec-Feb 2001	185.8	6.2	191.9	3.2	63.0
Mar-May 2001	188.0	5.5	193.5	2.8	63.0
Jun-Aug 2001	194.5	7.0	201.6	3.5	65.2
Sep-Nov 2001	191.1	6.4	197.5	3.2	63.2
Dec-Feb 2002	191.1	6.7	197.8	3.4	63.0
Mar-May 2002	194.2	6.6	200.9	3.3	63.5
Jun-Aug 2002	201.9	8.0	209.9	3.8	65.6
Sep-Nov 2002	198.9	7.2	206.1	3.5	63.8
Dec-Feb 2003	199.8	6.4	206.3	3.1	63.3
Mar-May 2003	201.6	6.1	207.7	2.9	63.6
Jun-Aug 2003	203.4	8.9	212.3	4.2	64.6
Sep-Nov 2003	202.8	7.0	209.8	3.3	63.3
Dec-Feb 2004	203.5	6.6	210.1	3.1	62.9
<b>Mid-West</b>					
Sep-Nov 1997	125.2	11.9	137.2	8.7	56.2
Dec-Feb 1998	128.9	9.8	138.7	7.1	56.3
Mar-May 1998	129.1	9.5	138.6	6.8	55.9
Jun-Aug 1998	136.1	9.5	145.6	6.5	58.3
Sep-Nov 1998	132.0	7.7	139.7	5.5	55.6
Dec-Feb 1999	133.9	7.1	141.1	5.1	56.0
Mar-May 1999	136.7	7.2	143.9	5.0	57.0
Jun-Aug 1999	147.4	8.6	156.0	5.5	61.5
Sep-Nov 1999	144.1	7.7	151.8	5.1	59.3
Dec-Feb 2000	143.7	6.4	150.1	4.3	58.5
Mar-May 2000	145.4	6.0	151.4	4.0	58.8
Jun-Aug 2000	150.3	6.7	157.0	4.3	60.7
Sep-Nov 2000	146.5	5.9	152.4	3.9	58.3
Dec-Feb 2001	143.9	5.8	149.7	3.9	57.2
Mar-May 2001	144.3	5.2	149.6	3.5	56.9
Jun-Aug 2001	152.3	7.1	159.4	4.5	60.4
Sep-Nov 2001	149.5	6.5	155.9	4.1	58.7
Dec-Feb 2002	149.3	6.7	156.0	4.3	58.5
Mar-May 2002	151.0	5.6	156.7	3.6	58.5
Jun-Aug 2002	156.3	6.1	162.4	3.7	60.7
Sep-Nov 2002	147.9	6.2	154.1	4.1	57.4
Dec-Feb 2003	149.8	6.1	156.0	3.9	58.0
Mar-May 2003	152.9	6.7	159.6	4.2	59.1
Jun-Aug 2003	157.2	9.3	166.5	5.6	61.4
Sep-Nov 2003	153.6	8.8	162.5	5.4	59.7
Dec-Feb 2004	155.4	7.6	163.1	4.7	59.9

<sup>1</sup> See Background Notes.

**Table 3 continued Persons aged 15 years and over classified by NUTS3 regions<sup>1</sup> and ILO Economic Status**

Region	In employment	Unemployed	In labour force	Unemployment rate	Participation rate
	'000	'000	'000	%	%
<b>South-East</b>					
Sep-Nov 1997	148.2	19.2	167.5	11.5	55.6
Dec-Feb 1998	151.7	16.2	168.0	9.7	55.2
Mar-May 1998	150.7	16.1	166.9	9.7	54.5
Jun-Aug 1998	157.8	16.9	174.6	9.7	56.7
Sep-Nov 1998	157.4	14.9	172.3	8.6	55.6
Dec-Feb 1999	158.2	13.4	171.6	7.8	55.2
Mar-May 1999	160.1	14.6	174.7	8.4	56.0
Jun-Aug 1999	171.3	14.6	185.8	7.8	59.4
Sep-Nov 1999	168.8	12.0	180.8	6.6	57.5
Dec-Feb 2000	167.8	10.3	178.2	5.8	56.6
Mar-May 2000	170.3	8.7	179.1	4.9	56.7
Jun-Aug 2000	178.3	9.7	188.0	5.2	59.2
Sep-Nov 2000	173.3	8.9	182.2	4.9	56.7
Dec-Feb 2001	173.6	8.7	182.2	4.7	56.6
Mar-May 2001	176.0	8.5	184.5	4.6	57.1
Jun-Aug 2001	185.5	9.5	195.1	4.9	60.0
Sep-Nov 2001	182.5	7.4	189.9	3.9	58.0
Dec-Feb 2002	182.4	8.9	191.2	4.6	58.3
Mar-May 2002	184.6	9.0	193.6	4.7	58.7
Jun-Aug 2002	190.0	9.8	199.8	4.9	60.2
Sep-Nov 2002	187.0	10.6	197.6	5.3	59.1
Dec-Feb 2003	186.3	11.6	197.9	5.9	58.9
Mar-May 2003	188.1	11.3	199.4	5.7	59.2
Jun-Aug 2003	195.3	13.1	208.3	6.3	61.5
Sep-Nov 2003	191.1	10.4	201.5	5.2	59.1
Dec-Feb 2004	191.0	10.8	201.8	5.3	58.8
<b>South-West</b>					
Sep-Nov 1997	213.0	24.7	237.7	10.4	55.9
Dec-Feb 1998	214.7	20.3	234.9	8.6	54.8
Mar-May 1998	216.4	18.4	234.8	7.8	54.5
Jun-Aug 1998	227.8	18.4	246.2	7.5	56.8
Sep-Nov 1998	224.5	15.0	239.5	6.3	55.0
Dec-Feb 1999	224.0	12.9	236.9	5.4	54.2
Mar-May 1999	228.3	13.6	241.9	5.6	55.2
Jun-Aug 1999	240.5	14.0	254.5	5.5	57.9
Sep-Nov 1999	238.3	11.9	250.2	4.7	56.6
Dec-Feb 2000	235.8	9.9	245.6	4.0	55.5
Mar-May 2000	241.8	9.6	251.4	3.8	56.7
Jun-Aug 2000	252.4	10.3	262.7	3.9	59.0
Sep-Nov 2000	244.6	9.9	254.5	3.9	56.7
Dec-Feb 2001	241.6	9.5	251.1	3.8	55.8
Mar-May 2001	247.1	9.6	256.6	3.7	56.9
Jun-Aug 2001	258.0	11.0	269.0	4.1	59.4
Sep-Nov 2001	250.6	10.2	260.9	3.9	57.2
Dec-Feb 2002	249.5	11.6	261.1	4.5	57.0
Mar-May 2002	250.4	10.6	261.0	4.0	56.8
Jun-Aug 2002	260.1	12.2	272.3	4.5	59.0
Sep-Nov 2002	253.1	12.1	265.2	4.5	57.0
Dec-Feb 2003	251.3	11.3	262.6	4.3	56.4
Mar-May 2003	253.7	11.6	265.3	4.4	56.8
Jun-Aug 2003	264.1	13.1	277.2	4.7	59.1
Sep-Nov 2003	261.4	11.0	272.4	4.0	57.6
Dec-Feb 2004	263.5	11.2	274.7	4.1	58.0

<sup>1</sup> See Background Notes.

## Background Notes

**Purpose of Survey** The Quarterly National Household Survey (QNHS) began in September 1997, replacing the annual April Labour Force Survey (LFS). The purpose of the survey is the production of quarterly labour force estimates and occasional reports on special social topics. The survey meets the requirements of Council Regulation (EC) No. 577/98, adopted in March 1998, which requires the introduction of quarterly labour force surveys in EU Member States.

**Reference Period** Information is collected continuously throughout the year, with 3,000 households surveyed each week to give a total sample of 39,000 households in each quarter. The reference quarters for survey results are: Q1 - December to February, Q2 - March to May, Q3 - June to August and Q4 - September to November.

**Data Collection** Information is collected on laptop computers, using computer-assisted personal interview (CAPI) software.

**Sample Design** A two-stage sample design is used. This comprises a first stage sample of 2,600 blocks (or small areas) selected at county level to proportionately represent eight strata reflecting population density. Each block was selected to contain, on average, 75 dwellings and the sample of blocks is fixed for a period of about five years. In the second stage of sampling, 15 households are surveyed in each block to give a total quarterly sample of 39,000 households.

Households are asked to take part in the survey for five consecutive quarters and are then replaced by other households in the same block. Thus, one fifth of the households in the survey are replaced each quarter and the QNHS sample involves an overlap of 80% between consecutive quarters and 20% between the same quarter in consecutive years.

The survey results are weighted to agree with population estimates broken down by age, sex and region. The population estimates for April of each year are published in a separate release.

**ILO Labour Force Classification** The primary classification used for the QNHS results is the ILO (International Labour Office) labour force classification. Labour Force Survey data on this basis have been published since 1988. The ILO classification distinguishes the following main subgroups of the population aged 15 or over:

**In Employment:** Persons who worked in the week before the survey for one hour or more for payment or profit, including work on the family farm or business and all persons who had a job but were not at work because of illness, holidays etc. in the week.

**Unemployed:** Persons who, in the week before the survey, were without work and available for work within the next two weeks, and had taken specific steps, in the preceding four weeks, to find work.

**Inactive Population (not in labour force):** All other persons.

The labour force comprises persons employed plus unemployed.

### Participation, Employment and Unemployment Rates

The rates given in this release are based on the ILO classification. The Participation Rate is the number of persons in the labour force expressed as a percentage of the total population aged 15 or over. The Employment Rate is the number of employed aged 15 to 64 expressed as a percentage of the total population aged 15 to 64. The Unemployment Rate is the number of unemployed expressed as a percentage of the total labour force.

**Underemployment** In the LFS and in the first two quarters of the QNHS, a person who had a part-time job was classified as underemployed if he/she was looking and available for another part-time job or a full-time job.

Since the March-May 1998 quarter, the category “underemployed” has been based on a new question relating to the respondent’s satisfaction with his/her current hours. Thus, a respondent who works in a part-time job is classified as “underemployed” if he/she is looking and available for another job and has explicitly stated that the hours worked currently are “too few”.

This change has affected comparability (but only within the “At work, part-time” category) between the December-February 1997/98 and subsequent quarters.

**Changes to Questions on Employment** Information on full-time and part-time jobs is also collected using a more direct approach in the QNHS. The relevant LFS question distinguished four response categories, relating to occasional and regular as well as to full-time and part-time jobs. These concepts are now asked separately and the question on full-time or part-time work is as follows:

*“Thinking about the hours of work in the job, would you describe it as full-time or part-time?”.*

The main effect of these changes has been to elicit more information about part-time employment, so that the estimates of part-time employment are higher in the QNHS than in the LFS.

This change has also increased the proportion of respondents indicating part-time involvement in the workforce. The effect of these changes is to cause a once-off discontinuity between the LFS and QNHS results.

**Seasonality** Seasonal factors do not affect annual comparisons of LFS/QNHS results. However, they do affect the sub-annual comparisons and the effects of seasonal variation in labour supply and demand are evident from the QNHS results.

Seasonal factors are most clearly visible in the results for the June-August quarter, when the number of persons in employment is at its highest. Unemployment also increases in that quarter, when more people are available and looking for work. There is also evidence that employment and unemployment are both lower in the winter months.

**NUTS2 and NUTS3 regions**

The regional classifications in this release are based on the NUTS (Nomenclature of Territorial Units) classification used by Eurostat. The NUTS3 regions correspond to the eight Regional Authorities established under the Local Government Act, 1991 (Regional Authorities) (Establishment) Order, 1993, which came into operation on 1 January 1994. The NUTS2 regions, which were proposed by Government and agreed by Eurostat in 1999, are groupings of the NUTS3 regions. The composition of the regions is set out below.

<b>Border, Midland and Western NUTS2 Region</b>		<b>Southern and Eastern NUTS2 Region</b>	
<b>Border</b>	Cavan Donegal Leitrim Louth Monaghan Sligo	<b>Dublin</b>	Dublin Dun Laoghaire-Rathdown Fingal South Dublin
<b>Midland</b>	Laoighis Longford Offaly Westmeath	<b>Mid-East</b>	Kildare Meath Wicklow
<b>West</b>	Galway City Galway County Mayo Roscommon	<b>Mid-West</b>	Clare Limerick City Limerick County North Tipperary
		<b>South-East</b>	Carlow Kilkenny South Tipperary Waterford City Waterford County Wexford
		<b>South-West</b>	Cork City Cork County Kerry