

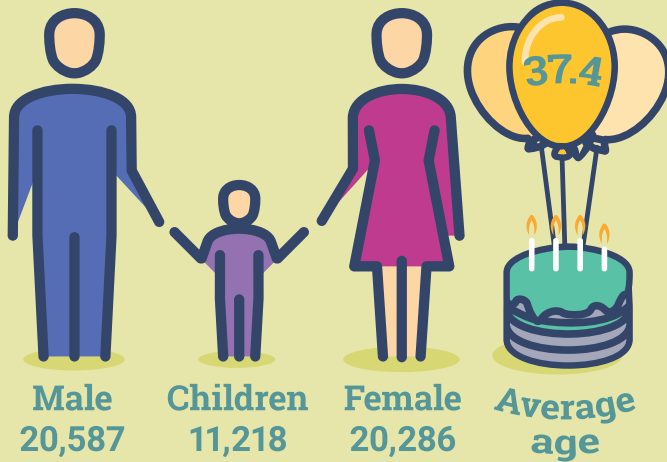


An
Phríomh-Oifig
Staidrimh

Central
Statistics
Office

Yearbook 2018 Longford

Breakdown of population Total 40,873



Number of Students/ Pupils Aged 15 and Over 3,062



Number & most common type of Private Households



Number & percentage of Persons with a Disability

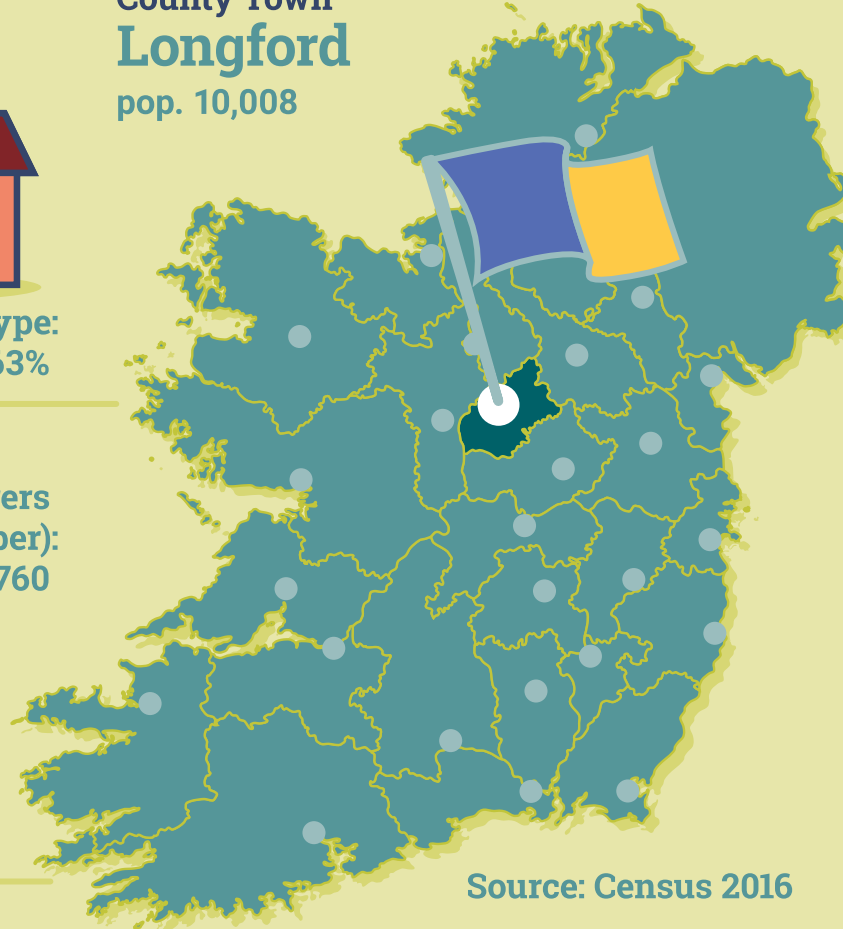
Number:
5,916

Percentage of
total persons:
14.5%



Carers
(number):
1,760

County Town Longford pop. 10,008



Source: Census 2016