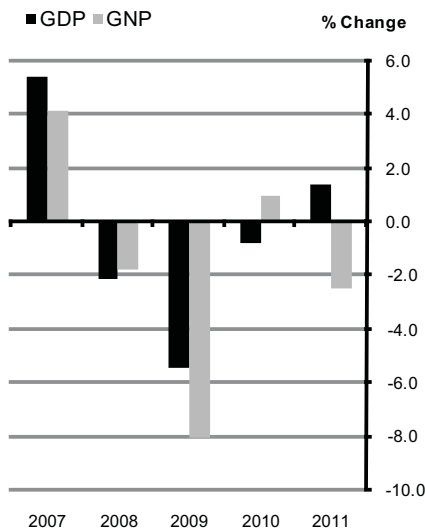




## National Income and Expenditure Annual Results for 2011

### Growth Rates



### GDP and GNP

	2010	2011	% Change
<b>GDP at Current Prices</b>	€156,487m	€158,993m	+1.6%
<b>GDP at Constant (2010) Prices</b>	€156,487m	€158,726m	+1.4%
<b>GNP at Current Prices</b>	€130,202m	€127,016m	-2.4%
<b>GNP at Constant (2010) Prices</b>	€130,202m	€126,983m	-2.5%

### Increase of 1.4 per cent in GDP in 2011

Detailed annual national accounts show that Gross Domestic Product (GDP) increased by 1.4 per cent in constant prices between 2010 and 2011. Gross National Product (GNP), on the other hand, fell by 2.5 per cent over the same period. The present release is based on more complete and up to date data than that which was available when the Q4 2011 estimates were published in March 2012. The 2010/2011 constant price changes indicated at that stage were GDP (+0.7 per cent) and GNP (-2.5 per cent).

### Industry and Software the main contributors to growth in 2011

There was an increase of 3.9 per cent in constant prices in the output of the sector Distribution, transport, software and communications between 2010 and 2011. The subsector Software and communications increased by 12.3 per cent over this period. Industry (excluding building and construction) recorded an increase of 3.1 per cent in 2011 compared to 2010. Building and construction declined by 16.9 per cent while agriculture, forestry and fishing decreased by 5.4 per cent between 2010 and 2011. There were also declines in public administration and defence (-3.6 per cent) and other services (-0.9 per cent) during 2011.

### Strong export growth

On the expenditure side of the accounts exports performed strongly in 2011, increasing by 5.1 per cent in volume terms. The other main components on the expenditure side all declined in 2011 except for an increase in stock levels. Personal consumption expenditure declined by 2.4 per cent while government current expenditure fell by 4.3 per cent and capital investment decreased by 12.6 per cent. Imports recorded a minor decrease (-0.3 per cent) between 2010 and 2011.

The Nace Rev 2 classification system is now used in tables 2 to 4. This replaces the national classification system used in previous releases. See the notes at the back for further details.

The results in the present release also include revisions to both sides of the accounts (income and expenditure) for all years from 2006 to 2010.

Published by the Central Statistics Office, Ireland.

Ardee Road Skehard Road  
Dublin 6 Cork  
Ireland Ireland

LoCall: 1890 313 414 (ROI)  
0870 876 0256 UK/NI)

Tel: +353 1 498 4000 Tel: +353 21 453 5000  
Fax: +353 1 498 4381 Fax: +353 21 453 5555

Both offices may be contacted through any of these telephone numbers.

CSO on the Web: [www.cso.ie](http://www.cso.ie)  
and go to:  
Economy: National Accounts

Director General: Pádraig Dalton

Enquiries:

National Accounts National Accounts, ext 4371  
nat\_acc@cso.ie  
General queries Information Section, ext 5021  
information@cso.ie

© Central Statistics Office  
The contents of this release may be quoted provided the source is given clearly and accurately. Reproduction for own or internal use is permitted.



**Table A Main Aggregates, 2006-2011**

Description	2006	2007	2008	2009	2010	2011†
						€ million
Gross Domestic Product (GDP) at current market prices	177,729	188,729	178,882	161,275	156,487	158,993
Gross National Product (GNP) at current market prices	154,465	162,209	153,565	132,911	130,202	127,016
Gross National Income (GNI) at current market prices	155,773	163,418	154,878	134,271	131,295	128,301
Gross National Disposable Income at current market prices	153,961	161,219	152,411	131,488	128,788	125,858
Chain linked volume measures						€ million
Gross Domestic Product at constant market prices (referenced to 2010)	161,590	170,389	166,796	157,695	156,487	158,726
Gross National Product at constant market prices (referenced to 2010)	137,145	142,848	140,316	128,988	130,202	126,983
Gross National Income at constant market prices (referenced to 2010)	138,183	143,778	141,186	130,210	131,295	128,056
Per head of population (€)						
GDP at current market prices	41,988	43,496	40,452	36,166	35,003	35,455
GNP at current market prices	36,491	37,384	34,727	29,805	29,123	28,325
GNI at current market prices	36,801	37,663	35,024	30,110	29,368	28,611
GDP at constant market prices (referenced to 2010)	38,175	39,269	37,719	35,363	35,003	35,396
GNP at constant market prices (referenced to 2010)	32,400	32,922	31,731	28,926	29,123	28,317
GNI at constant market prices (referenced to 2010)	32,645	33,136	31,927	29,200	29,368	28,557
Per person in employment (€)						
GDP at current market prices	87,340	89,280	84,666	83,196	84,173	87,296
GNP at current market prices	75,908	76,734	72,683	68,564	70,035	69,739
GNI at current market prices	76,551	77,306	73,304	69,265	70,623	70,445
GDP at constant market prices (referenced to 2010)	79,409	80,604	78,945	81,349	84,173	87,150
GNP at constant market prices (referenced to 2010)	67,396	67,576	66,412	66,540	70,035	69,721
GNI at constant market prices (referenced to 2010)	67,907	68,016	66,824	67,171	70,623	70,310

† Preliminary

**Table B Annual Percentage Changes in the Main Aggregates**

Description	2006-2011	2006-2007	2007-2008	2008-2009	2009-2010	2010-2011
Gross Domestic Product (GDP) at current market prices	<b>-2.2</b>	6.2	-5.2	-9.8	-3.0	1.6
Gross National Product (GNP) at current market prices	<b>-3.8</b>	5.0	-5.3	-13.4	-2.0	-2.4
Gross National Income (GNI) at current market prices	<b>-3.8</b>	4.9	-5.2	-13.3	-2.2	-2.3
Gross National Disposable Income at current market prices	<b>-4.0</b>	4.7	-5.5	-13.7	-2.1	-2.3
Chained linked volume measures						
Gross Domestic Product at constant market prices (referenced to 2010)	<b>-0.4</b>	5.4	-2.1	-5.5	-0.8	1.4
Gross National Product at constant market prices (referenced to 2010)	<b>-1.5</b>	4.2	-1.8	-8.1	0.9	-2.5
Gross National Income at constant market prices (referenced to 2010)	<b>-1.5</b>	4.0	-1.8	-7.8	0.8	-2.5

**Table 1 Net Value Added at Factor Cost and Net National Income at Market Prices**

								€ million
Description	ESA code	2006	2007	2008	2009	2010	2011†	
<b>Value added from agriculture, forestry and fishing (B.1n-D.29+D.39) Pt</b>		<b>2,819</b>	<b>3,130</b>	<b>2,705</b>	<b>2,064</b>	<b>2,555</b>	<b>3,248</b>	
1. Income from self-employment and other trading income	B.3 (Pt)	2,230	2,531	2,140	1,495	1,959	2,655	
Remuneration of employees:	D.1 (Pt)							
2. Wages and salaries	(D.11+D.12) Pt	541	549	518	521	546	544	
3. Employers' contribution to social insurance	D.12 (Pt)	49	50	47	48	50	49	
<b>Non-agricultural value added (B.1n-D.29+D.39) Pt</b>		<b>133,490</b>	<b>143,836</b>	<b>136,993</b>	<b>125,123</b>	<b>122,592</b>	<b>125,201</b>	
Profits and self employed earnings:								
4. Domestic trading profits of companies (including corporate bodies) before tax	B.2 (Pt)	48,217	50,965	39,247	38,302	42,703	53,622	
5. Self employed earnings of which:	B.3 (Pt)	10,528	10,338	8,976	7,894	7,452		
5(a) Withdrawals from quasi-corporations ^	D.422	847	1,159	1,074	1,165	1,133		
6. Adjustment for stock appreciation	B.2 (Pt)	-175	-780	33	904	-546	-620	
7. Rent of dwellings (actual and imputed) of which imputed rent	B.2 (Pt)	3,099	5,092	7,776	4,571	4,287	4,434	
8. Rent element in land annuities		2,320	3,988	6,200	3,589	3,326	3,466	
8. Rent element in land annuities		11	0	1	1	1	0	
Remuneration of employees:	D.1 (Pt)							
9. Wages and salaries	(D.11+D.12) Pt	66,691	72,533	75,063	68,202	63,683	62,450	
10. Employers' contribution to social insurance	D.12 (Pt)	5,118	5,689	5,897	5,250	5,013	5,315	
<b>Adjustments:</b>								
12. Statistical discrepancy		101	-546	1,051	1,221	-581	-1,020	
<b>13. Net value added at factor cost (B.1n-D.29+D.39)</b>		<b>136,410</b>	<b>146,421</b>	<b>140,749</b>	<b>128,408</b>	<b>124,567</b>	<b>127,429</b>	
14. Net factor income from the rest of the world	D.1 & D.4 (net to abroad)	-23,264	-26,520	-25,317	-28,364	-26,285	-31,977	
<b>15. Net national product at factor cost</b>		<b>113,145</b>	<b>119,901</b>	<b>115,432</b>	<b>100,044</b>	<b>98,282</b>	<b>95,453</b>	
16. National (i.e. non EU) taxes	D.2 (Pt)	24,666	25,216	22,246	18,271	17,922	17,678	
17. National (i.e. non EU) subsidies	D.3 (Pt)	-775	-870	-939	-893	-879	-639	
<b>18. Net national income at market prices B.5*n</b>		<b>137,036</b>	<b>144,247</b>	<b>136,739</b>	<b>117,422</b>	<b>115,324</b>	<b>112,491</b>	

† Preliminary

^ This represents the earnings of the owners of large non incorporated businesses (e.g. large partnerships) which are similar in their economic and financial behaviour to companies of an equivalent size.

**Table 1.1 Annual Percentage Changes in the Main Constituents of Table 1**

Description	ESA Code	2006-2011	2006-2007	2007-2008	2008-2009	2009-2010	2010-2011
<b>Value added from agriculture, forestry and fishing (B.1n-D.29+D.39) Pt</b>		<b>2.9</b>	11.0	-13.6	-23.7	23.8	27.1
Income from self-employment and other trading income	B.3 (Pt)	<b>3.6</b>	13.5	-15.5	-30.1	31.0	35.5
Remuneration of employees	D.1 (Pt)	<b>0.1</b>	1.6	-5.6	0.5	5.0	-0.6
<b>Non-agricultural value added (B.1n-D.29+D.39) Pt</b>		<b>-1.3</b>	7.8	-4.8	-8.7	-2.0	2.1
Profits etc. #	B.2 (Pt) & B.3 (Pt)	<b>-1.5</b>	6.4	-14.6	-7.8	4.3	6.6
Remuneration of employees	D.1 (Pt)	<b>-1.2</b>	8.9	3.5	-9.3	-6.5	-1.4
Net national product at factor cost		<b>-3.3</b>	6.0	-3.7	-13.3	-1.8	-2.9
Net national income at market prices	<b>B.5*n</b>	<b>-3.9</b>	5.3	-5.2	-14.1	-1.8	-2.5

# i.e. Items 4 to 8 in Table 1

**Table 2 Net Value Added at Factor Cost by Sector of Origin and Gross National Income at Current Market Prices**

(Note the sectors here are based on Nace rev 2. For further details see the methodology notes at the back)

€ million

Description	ESA code	2006	2007	2008	2009	2010	2011†
<b>19. Agriculture, forestry and fishing</b>							
<b>Net value added</b>	<b>(B.1n-D.29+D.39) Pt</b>	<b>2,830</b>	<b>3,131</b>	<b>2,706</b>	<b>2,064</b>	<b>2,556</b>	<b>3,248</b>
Remuneration of employees	D.1 (Pt)	590	599	566	568	596	593
Other	(B.2 & B.3) Pt	2,241	2,532	2,140	1,496	1,959	2,655
<b>20. Industry (including building)</b>							
<b>Net value added</b>	<b>(B.1n-D.29+D.39) Pt</b>	<b>46,114</b>	<b>47,138</b>	<b>40,430</b>	<b>36,339</b>	<b>32,836</b>	<b>33,503</b>
Remuneration of employees	D.1 (Pt)	21,195	22,386	20,839	16,206	14,272	13,532
Other	(B.2 & B.3) Pt	24,914	25,090	19,693	19,461	18,939	20,373
Adjustment for stock appreciation	(B.2 & B.3) Pt	5	-338	-101	673	-375	-402
<b>20a. Industry</b>							
<b>Net value added</b>	<b>(B.1n-D.29+D.39) Pt</b>	<b>29,470</b>	<b>32,242</b>	<b>30,020</b>	<b>31,741</b>	<b>30,869</b>	<b>31,609</b>
Remuneration of employees	D.1 (Pt)	11,204	11,800	11,756	10,520	10,068	9,803
Other	(B.2 & B.3) Pt	18,262	20,781	18,365	20,549	21,177	22,208
Adjustment for stock appreciation	(B.2 & B.3) Pt	5	-338	-101	673	-375	-402
<b>20b. Building and construction</b>							
<b>Net value added</b>	<b>(B.1n-D.29+D.39) Pt</b>	<b>16,644</b>	<b>14,896</b>	<b>10,410</b>	<b>4,598</b>	<b>1,967</b>	<b>1,894</b>
Remuneration of employees	D.1 (Pt)	9,991	10,586	9,082	5,686	4,204	3,729
Other	(B.2 & B.3) Pt	6,652	4,310	1,328	-1,088	-2,237	-1,835
<b>21. Distribution, transport, software and communications</b>							
<b>Net value added</b>	<b>(B.1n-D.29+D.39) Pt</b>	<b>30,511</b>	<b>33,994</b>	<b>31,943</b>	<b>28,489</b>	<b>29,367</b>	<b>32,232</b>
Remuneration of employees	D.1 (Pt)	16,541	18,436	20,122	18,262	17,732	17,210
Other	(B.2 & B.3) Pt	14,150	15,999	11,686	9,996	11,806	15,241
Adjustment for stock appreciation	(B.2 & B.3) Pt	-180	-442	135	232	-171	-219
<b>22. Public administration and defence</b>							
Remuneration of employees	D.1 (Pt)	5,271	5,804	6,227	5,855	5,380	5,394
<b>23. Other services (including rent)</b>							
<b>Net value added</b>	<b>(B.1n-D.29+D.39) Pt</b>	<b>51,582</b>	<b>56,900</b>	<b>58,392</b>	<b>54,439</b>	<b>55,009</b>	<b>54,072</b>
Remuneration of employees	D.1 (Pt)	28,801	31,595	33,773	33,129	31,313	31,630
Other	(B.2 & B.3) Pt	22,781	25,305	24,620	21,310	23,697	22,442
26. Statistical discrepancy (= Item 12)		101	-546	1,051	1,221	-581	-1,020
<b>27. Net value added at factor cost</b>	<b>B.1n-D.29+D.39</b>	<b>136,410</b>	<b>146,421</b>	<b>140,749</b>	<b>128,408</b>	<b>124,567</b>	<b>127,429</b>
<b>28. plus Provision for depreciation</b>	<b>K.1</b>	<b>18,737</b>	<b>19,171</b>	<b>18,139</b>	<b>16,849</b>	<b>15,971</b>	<b>15,809</b>
Agriculture, forestry and fishing		559	615	703	715	666	654
Industry (including building)		3,740	3,956	3,934	3,828	3,690	3,782
Industry		3,247	3,415	3,377	3,312	3,242	3,276
Building and construction		494	541	557	516	447	506
Distribution, transport, software & communications		3,645	3,963	4,269	4,435	4,366	4,264
Other services		10,792	10,636	9,232	7,870	7,249	7,109
<b>29. Gross value added at factor cost</b>	<b>B.1g-D.29+D.39</b>	<b>155,147</b>	<b>165,592</b>	<b>158,887</b>	<b>145,257</b>	<b>140,538</b>	<b>143,239</b>
30. Non product taxes	D.29	1,786	1,909	2,089	2,188	2,264	2,244
31. Non product subsidies	D.39	-1,954	-2,058	-2,039	-1,994	-1,833	-1,593
<b>32. Gross value added at basic prices</b>	<b>B.1g</b>	<b>154,979</b>	<b>165,443</b>	<b>158,938</b>	<b>145,452</b>	<b>140,969</b>	<b>143,890</b>
33. Product taxes	D.21	23,350	23,826	20,641	16,442	16,057	15,849
34. Product subsidies	D.31	-600	-540	-697	-618	-540	-746
<b>35. Gross domestic product at current market prices B.1*g</b>		<b>177,729</b>	<b>188,729</b>	<b>178,882</b>	<b>161,275</b>	<b>156,487</b>	<b>158,993</b>
36. Net factor income from the rest of the world	D.1 & D.4 (net to abroad)	-23,264	-26,520	-25,317	-28,364	-26,285	-31,977
<b>37. Gross national product at current market prices</b>		<b>154,465</b>	<b>162,209</b>	<b>153,565</b>	<b>132,911</b>	<b>130,202</b>	<b>127,016</b>
38. EU subsidies	D.3 (Pt)	1,778	1,728	1,797	1,719	1,494	1,700
39. EU taxes	D.2 (Pt)	-470	-519	-484	-359	-400	-416
<b>40. Gross national income at current market prices</b>	<b>B.5*g</b>	<b>155,773</b>	<b>163,418</b>	<b>154,878</b>	<b>134,271</b>	<b>131,295</b>	<b>128,301</b>

† Preliminary

**Table 3 Gross Value Added at Factor Cost by Sector of Origin and Gross National Income at Current Market Prices**

(Note the sectors here are based on Nace rev 2. For further details see the methodology notes at the back)

€ million

Description	ESA Code	2006	2007	2008	2009	2010	2011†
41. Agriculture, forestry and fishing	(B.1g-D.29+D.39) Pt	3,389	3,746	3,410	2,780	3,222	3,902
42. Industry (including building)	(B.1g-D.29+D.39) Pt	49,854	51,094	44,364	40,167	36,525	37,285
42a. <i>Industry</i>	(B.1g-D.29+D.39) Pt	32,717	35,658	33,397	35,054	34,112	34,885
42b. <i>Building and construction</i>	(B.1g-D.29+D.39) Pt	17,137	15,437	10,967	5,114	2,414	2,400
43. Distribution, transport, software & communications	(B.1g-D.29+D.39) Pt	34,156	37,957	36,212	32,925	33,733	36,496
44. Public administration and defence	(B.1g-D.29+D.39) Pt	7,645	8,341	8,730	8,338	7,831	7,813
45. Other services (including rent)	(B.1g-D.29+D.39) Pt	60,001	65,000	65,121	59,826	59,808	58,762
47. Statistical discrepancy (= Item 12)		101	-546	1,051	1,221	-581	-1,020
<b>48. Gross value added at factor cost</b>	<b>B.1g-D.29+D.39</b>	<b>155,147</b>	<b>165,592</b>	<b>158,887</b>	<b>145,257</b>	<b>140,538</b>	<b>143,239</b>
49. Non product taxes	D.29	1,786	1,909	2,089	2,188	2,264	2,244
50. Non product subsidies	D.39	-1,954	-2,058	-2,039	-1,994	-1,833	-1,593
<b>51. Gross value added at basic prices</b>	<b>B.1g</b>	<b>154,979</b>	<b>165,443</b>	<b>158,938</b>	<b>145,452</b>	<b>140,969</b>	<b>143,890</b>
52. Product taxes	D.21	23,350	23,826	20,641	16,442	16,057	15,849
53. Product subsidies	D.31	-600	-540	-697	-618	-540	-746
<b>54. Gross domestic product at current market prices</b>	<b>B.1*g</b>	<b>177,729</b>	<b>188,729</b>	<b>178,882</b>	<b>161,275</b>	<b>156,487</b>	<b>158,993</b>
55. Net factor income from the rest of the world	D.1 & D.4 (net to abroad)	-23,264	-26,520	-25,317	-28,364	-26,285	-31,977
<b>56. Gross national product at current market prices</b>		<b>154,465</b>	<b>162,209</b>	<b>153,565</b>	<b>132,911</b>	<b>130,202</b>	<b>127,016</b>
57. EU subsidies	D.3 (Pt)	1,778	1,728	1,797	1,719	1,494	1,700
58. EU taxes	D.2 (Pt)	-470	-519	-484	-359	-400	-416
<b>59. Gross national income at current market prices</b>	<b>B.5*g</b>	<b>155,773</b>	<b>163,418</b>	<b>154,878</b>	<b>134,271</b>	<b>131,295</b>	<b>128,301</b>

† Preliminary

**Table 3.1 Annual Percentage Change in the Main Constituents of Table 3**

Description	ESA Code	2006-2011	2006-2007	2007-2008	2008-2009	2009-2010	2010-2011
Agriculture, forestry and fishing	(B.1g-D.29+D.39) Pt	<b>2.9</b>	10.5	-9.0	-18.5	15.9	21.1
Industry (including building)	(B.1g-D.29+D.39) Pt	<b>-5.6</b>	2.5	-13.2	-9.5	-9.1	2.1
<i>Industry</i>	(B.1g-D.29+D.39) Pt	<b>1.3</b>	9.0	-6.3	5.0	-2.7	2.3
<i>Building and construction</i>	(B.1g-D.29+D.39) Pt	<b>-32.5</b>	-9.9	-29.0	-53.4	-52.8	-0.6
Distribution, transport, software & communications	(B.1g-D.29+D.39) Pt	<b>1.3</b>	11.1	-4.6	-9.1	2.5	8.2
Public administration and defence	(B.1g-D.29+D.39) Pt	<b>0.4</b>	9.1	4.7	-4.5	-6.1	-0.2
Other services (including rent)	(B.1g-D.29+D.39) Pt	<b>-0.4</b>	8.3	0.2	-8.1	0.0	-1.7
Gross value added at factor cost	B.1g-D.29+D.39	<b>-1.6</b>	6.7	-4.0	-8.6	-3.2	1.9
Gross value added at basic prices	B.1g	<b>-1.5</b>	6.8	-3.9	-8.5	-3.1	2.1
Gross domestic product at current market prices	B.1*g	<b>-2.2</b>	6.2	-5.2	-9.8	-3.0	1.6
Gross national product at current market prices		<b>-3.8</b>	5.0	-5.3	-13.4	-2.0	-2.4
Gross national income at current market prices	B.5*g	<b>-3.8</b>	4.9	-5.2	-13.3	-2.2	-2.3

**Table 4 Gross Value Added at Constant Factor Cost by Sector of Origin and Gross National Income at Constant Market Prices (chain linked annually and referenced to year 2010)**

(Note the sectors here are based on Nace rev 2. For further details see the methodology notes at the back)

€ million

Description	ESA Code	2006	2007	2008	2009	2010	2011†
60. Agriculture, forestry and fishing		3,742	3,702	3,651	3,437	3,222	3,049
61. Industry (including building)	(B.1g-D.29+D.39) Pt	42,995	42,419	39,835	35,852	36,525	37,168
Industry	(B.1g-D.29+D.39) Pt	37,090	36,168	33,984	32,554	34,112	35,163
of which #							
<i>Chemicals and pharmaceuticals</i>		11,176	10,137	8,758	11,109	14,100	15,482
<i>Computers and Instrument engineering</i>		5,852	5,506	5,974	4,120	2,906	2,746
<i>Medical and dental instruments &amp; supplies</i>		2,211	2,221	2,420	2,339	2,429	2,548
Building and construction	(B.1g-D.29+D.39) Pt	4,786	4,826	4,526	3,275	2,414	2,005
62. Distribution, transport, software & communications	(B.1g-D.29+D.39) Pt	25,224	29,441	31,146	32,219	33,733	35,041
of which							
<i>Software and communications</i>		5,086	6,471	8,118	10,390	11,979	13,448
63. Public administration and defence	(B.1g-D.29+D.39) Pt	7,932	8,306	8,685	8,291	7,831	7,551
64. Other services (including rent)	(B.1g-D.29+D.39) Pt	59,048	63,070	62,057	61,026	59,808	59,252
66. Statistical discrepancy		~	~	~	~	-581	896
<b>67. Gross value added at constant factor cost</b>	<b>B.1g-D.29+D.39</b>	<b>139,482</b>	<b>147,842</b>	<b>146,683</b>	<b>141,335</b>	<b>140,538</b>	<b>142,957</b>
68. Non product taxes	D.29	1,841	1,940	2,094	2,159	2,264	2,258
69. Non product subsidies	D.39	-1,916	-1,967	-2,024	-1,919	-1,833	-1,550
<b>70. Gross value added at constant basic prices</b>	<b>B.1g</b>	<b>139,440</b>	<b>147,846</b>	<b>146,767</b>	<b>141,576</b>	<b>140,969</b>	<b>143,665</b>
71. Product taxes	D.21	23,309	23,612	20,842	16,708	16,057	15,716
72. Product subsidies	D.31	-585	-555	-532	-565	-540	-656
<b>73. Gross domestic product at constant market prices</b>	<b>B.1*g</b>	<b>161,590</b>	<b>170,389</b>	<b>166,796</b>	<b>157,695</b>	<b>156,487</b>	<b>158,726</b>
74. Net factor income from the rest of the world	D.1 & D.4 (net to abroad)	-23,885	-27,226	-26,092	-28,811	-26,285	-31,742
<b>75. Gross national product at constant market prices</b>		<b>137,145</b>	<b>142,848</b>	<b>140,316</b>	<b>128,988</b>	<b>130,202</b>	<b>126,983</b>
76. EU subsidies	D.3 (Pt)	1,536	1,476	1,394	1,580	1,494	1,496
77. EU taxes	D.2 (Pt)	-457	-503	-479	-361	-400	-422
<b>78. Gross national income at constant market prices</b>	<b>B.5*g</b>	<b>138,183</b>	<b>143,778</b>	<b>141,186</b>	<b>130,210</b>	<b>131,295</b>	<b>128,056</b>

† Preliminary

~ Chain linked series not additive except for 2010 and 2011

**Table 4.1 Annual Percentage Changes in the Main Constituents of Table 4**

Description	ESA Code	2006-2011	2006-2007	2007-2008	2008-2009	2009-2010	2010-2011
Agriculture, forestry and fishing	(B.1g-D.29+D.39) Pt	-4.0	-1.1	-1.4	-5.9	-6.3	-5.4
Industry (including building)	(B.1g-D.29+D.39) Pt	-2.9	-1.3	-6.1	-10.0	1.9	1.8
Industry	(B.1g-D.29+D.39) Pt	-1.1	-2.5	-6.0	-4.2	4.8	3.1
of which #							
<i>Chemicals and pharmaceuticals</i>		6.7	-9.3	-13.6	26.8	26.9	9.8
<i>Computers and Instrument engineering</i>		-14.0	-5.9	8.5	-31.0	-29.4	-5.5
<i>Medical and dental instruments &amp; supplies</i>		2.9	0.4	9.0	-3.4	3.9	4.9
Building and construction	(B.1g-D.29+D.39) Pt	-16.0	0.8	-6.2	-27.6	-26.3	-16.9
Distribution, transport, software & communications	(B.1g-D.29+D.39) Pt	6.8	16.7	5.8	3.4	4.7	3.9
of which							
<i>Software and communications</i>		21.5	27.2	25.5	28.0	15.3	12.3
Public administration and defence	(B.1g-D.29+D.39) Pt	-1.0	4.7	4.6	-4.5	-5.6	-3.6
Other services (including rent)	(B.1g-D.29+D.39) Pt	0.1	6.8	-1.6	-1.7	-2.0	-0.9
Gross value added at constant factor cost	B.1g-D.29+D.39	0.5	6.0	-0.8	-3.6	-0.6	1.7
Gross value added at constant basic prices	B.1g	0.6	6.0	-0.7	-3.5	-0.4	1.9
Gross domestic product at constant market prices	B.1*g	-0.4	5.4	-2.1	-5.5	-0.8	1.4
Gross national product at constant market prices		-1.5	4.2	-1.8	-8.1	0.9	-2.5
Gross national income at constant market prices	B.5*g	-1.5	4.0	-1.8	-7.8	0.8	-2.5

# The three sectors distinguished correspond to NACE Rev 2 classes 20 & 21; 26; 27.

**Table 5 Expenditure on Gross National Income at Current Market Prices**

€ million

Description	ESA Code	2006	2007	2008	2009	2010	2011†
79. Personal consumption of goods and services ‡ <i>of which:</i>	P.3 (Pt)	84,634	92,724	94,153	83,155	82,060	81,308
79(a) Final consumption expenditure of Households and NPISHs		81,506	89,217	90,278	79,402	78,159	77,500
79(b) Final consumption expenditure of government		3,128	3,507	3,875	3,753	3,901	3,808
80. Net expenditure by central and local government on current goods and services	P.3 (Pt)	26,150	28,997	30,482	29,213	26,170	25,410
81. Gross domestic fixed capital formation	P.51 (Pt) & P.53	48,294	48,377	39,324	25,601	18,745	16,112
82. Value of physical changes in stocks <i>of which</i>	P.51 (Pt) & P.52	1,619	1,025	-330	-1,490	-553	227
82(a) Net additions to the breeding stocks		-58	-28	2	-44	-55	11
83. Exports of goods and services #	P.6	140,707	152,389	150,181	146,369	157,810	166,791
84. less Imports of goods and services #	P.7	-123,574	-135,328	-133,877	-120,352	-128,326	-131,875
85. Statistical discrepancy (= - Item 12)		-101	546	-1,051	-1,221	581	1,020
<b>86. Gross domestic product at current market prices</b>	<b>B.1*g</b>	<b>177,729</b>	<b>188,729</b>	<b>178,882</b>	<b>161,275</b>	<b>156,487</b>	<b>158,993</b>
87. Net factor income from the rest of the world	D.1 & D.4 (net to abroad)	-23,264	-26,520	-25,317	-28,364	-26,285	-31,977
<b>88. Gross national product at current market prices</b>		<b>154,465</b>	<b>162,209</b>	<b>153,565</b>	<b>132,911</b>	<b>130,202</b>	<b>127,016</b>
89. EU subsidies	D.3 (Pt)	1,778	1,728	1,797	1,719	1,494	1,700
90. EU taxes	D.2 (Pt)	-470	-519	-484	-359	-400	-416
<b>91. Gross national income at current market prices</b>	<b>B.5*g</b>	<b>155,773</b>	<b>163,418</b>	<b>154,878</b>	<b>134,271</b>	<b>131,295</b>	<b>128,301</b>

† Preliminary

‡ This heading no longer covers the cost of providing education in non fee paying voluntary secondary schools. This expenditure is now included with Government current expenditure i.e item 80.

# Excluding factor income flows

**Table 5.1 Annual Percentage Changes in the Main Constituents of Table 5**

Description	ESA Code	2006-2011	2006-2007	2007-2008	2008-2009	2009-2010	2010-2011
Personal consumption of goods and services	P.3 (Pt)	<b>-0.8</b>	9.6	1.5	-11.7	-1.3	-0.9
Net expenditure by central and local government on current goods and services	P.3 (Pt)	<b>-0.6</b>	10.9	5.1	-4.2	-10.4	-2.9
Gross domestic physical capital formation <i>of which</i>	P.5	<b>-20.0</b>	-1.0	-21.1	-38.2	-24.5	-10.2
Gross domestic fixed capital formation	P.51 (Pt) & P.53	<b>-19.7</b>	0.2	-18.7	-34.9	-26.8	-14.0
Exports of goods and services	P.6	<b>3.5</b>	8.3	-1.4	-2.5	7.8	5.7
Imports of goods and services	P.7	<b>1.3</b>	9.5	-1.1	-10.1	6.6	2.8
Gross domestic product at current market prices	B.1*g	<b>-2.2</b>	6.2	-5.2	-9.8	-3.0	1.6
Gross national product at current market prices		<b>-3.8</b>	5.0	-5.3	-13.4	-2.0	-2.4
Gross national income at current market prices	B.5*g	<b>-3.8</b>	4.9	-5.2	-13.3	-2.2	-2.3



**Table 6 Expenditure on Gross National Income at Constant Market Prices  
(chain linked annually and referenced to year 2010)**

€ million

Description	ESA Code	2006	2007	2008	2009	2010	2011†
92. Personal consumption of goods and services ‡ <i>of which:</i>	P.3 (Pt)	80,806	85,967	85,909	81,279	82,060	80,067
92(a) Final consumption expenditure of Households and NPISHs		77,933	82,749	82,455	77,753	78,159	76,342
92(b) Final consumption expenditure of government		2,896	3,238	3,473	3,539	3,901	3,726
93. Net expenditure by central and local government on current goods and services	P.3 (Pt)	27,323	29,112	29,283	27,995	26,170	25,045
94. Gross domestic fixed capital formation	P.51 (Pt) & P.53	36,346	37,196	33,462	24,225	18,745	16,390
95. Value of physical changes in stocks <i>of which:</i>	P.51 (Pt) & P.52	2,967	1,773	-341	-1,465	-553	209
95(a) Net additions to the breeding stocks		-110	-54	2	-44	-55	16
96. Exports of goods and services #	P.6	144,225	156,282	154,550	148,637	157,810	165,789
97. less Imports of goods and services #	P.7	-131,084	-141,473	-137,281	-123,905	-128,326	-127,879
98. Statistical discrepancy (= - item 66)		~	~	~	~	581	-896
<b>99. Gross domestic product at constant market prices</b>	<b>B.1*g</b>	<b>161,590</b>	<b>170,389</b>	<b>166,796</b>	<b>157,695</b>	<b>156,487</b>	<b>158,726</b>
100. Net factor income from the rest of the world	D.1 & D.4 (net to abroad)	-23,885	-27,226	-26,092	-28,811	-26,285	-31,742
<b>101. Gross national product at constant market prices</b>		<b>137,145</b>	<b>142,848</b>	<b>140,316</b>	<b>128,988</b>	<b>130,202</b>	<b>126,983</b>
102. EU subsidies	D.3 (Pt)	1,536	1,476	1,394	1,580	1,494	1,496
103. EU Taxes	D.2 (Pt)	-457	-503	-479	-361	-400	-422
<b>104. Gross national income at constant market prices</b>	<b>B.5*g</b>	<b>138,183</b>	<b>143,778</b>	<b>141,186</b>	<b>130,210</b>	<b>131,295</b>	<b>128,056</b>

† Preliminary

‡ This heading no longer covers the cost of providing education in non fee paying voluntary secondary schools. This expenditure is now included with Government current expenditure i.e item 93

# Excluding factor income flows

~ Chain linked series not additive except for 2010 and 2011

**Table 6.1 Annual Percentage Changes in the Main Constituents of Table 6**

Description	ESA Code	2006-2011	2006-2007	2007-2008	2008-2009	2009-2010	2010-2011
Personal consumption of goods and services	P.3 (Pt)	-0.2	6.4	-0.1	-5.4	1.0	-2.4
Net expenditure by central and local government on current goods and services	P.3 (Pt)	-1.7	6.5	0.6	-4.4	-6.5	-4.3
Gross domestic physical capital formation <i>of which</i>	P.5	-14.9	1.0	-12.3	-30.6	-20.2	-8.8
Gross domestic fixed capital formation	P.51 (Pt) & P.53	-14.7	2.3	-10.0	-27.6	-22.6	-12.6
Exports of goods and services	P.6	2.8	8.4	-1.1	-3.8	6.2	5.1
Imports of goods and services	P.7	-0.5	7.9	-3.0	-9.7	3.6	-0.3
Gross domestic product at constant market prices	B.1*g	-0.4	5.4	-2.1	-5.5	-0.8	1.4
Gross national product at constant market prices		-1.5	4.2	-1.8	-8.1	0.9	-2.5
Gross national income at constant market prices	B.5*g	-1.5	4.0	-1.8	-7.8	0.8	-2.5

**Table 7 Gross National Disposable Income and its Use**

€ million

Description	ESA Code	2006	2007	2008	2009	2010	2011†
105. Gross domestic product at current market prices	<b>B.1*g</b>	177,729	188,729	178,882	161,275	156,487	158,993
106. Net factor income from the rest of the world	D.1 & D.4 (net to abroad)	-23,264	-26,520	-25,317	-28,364	-26,285	-31,977
<b>107. Gross national product at current market prices</b>		<b>154,465</b>	<b>162,209</b>	<b>153,565</b>	<b>132,911</b>	<b>130,202</b>	<b>127,016</b>
108. EU subsidies	D.3 (Pt)	1,778	1,728	1,797	1,719	1,494	1,700
109. EU taxes	D.2 (Pt)	-470	-519	-484	-359	-400	-416
<b>110. Gross national income at current market prices</b>	<b>B.5*g</b>	<b>155,773</b>	<b>163,418</b>	<b>154,878</b>	<b>134,271</b>	<b>131,295</b>	<b>128,301</b>
111. Current transfers from the rest of the world less current transfers to the rest of the world (excluding EU subsidies and taxes)	(D.7 & D.9) Pt	-1,813	-2,199	-2,467	-2,783	-2,508	-2,442
<b>112. Gross national disposable income</b>	<b>B.6g</b>	<b>153,961</b>	<b>161,219</b>	<b>152,411</b>	<b>131,488</b>	<b>128,788</b>	<b>125,858</b>
113. Personal consumption of goods and services	P.3 (Pt)	84,634	92,724	94,153	83,155	82,060	81,308
114. Net expenditure by central and local government on current goods and services	P.3 (Pt)	26,150	28,997	30,482	29,213	26,170	25,410
<b>115. Total consumption expenditure</b>	<b>P.3</b>	<b>110,784</b>	<b>121,721</b>	<b>124,634</b>	<b>112,368</b>	<b>108,230</b>	<b>106,718</b>
<b>116. Gross national savings</b>	<b>B.8g</b>	<b>43,177</b>	<b>39,498</b>	<b>27,776</b>	<b>19,120</b>	<b>20,558</b>	<b>19,140</b>
<b>117. Provision for depreciation</b>	<b>K.1</b>	<b>18,737</b>	<b>19,171</b>	<b>18,139</b>	<b>16,849</b>	<b>15,971</b>	<b>15,809</b>
<b>118. Net national savings</b>	<b>B.8n</b>	<b>24,440</b>	<b>20,327</b>	<b>9,637</b>	<b>2,271</b>	<b>4,586</b>	<b>3,331</b>

† Preliminary

**Table 7.1 Annual Percentage Changes in the Main Constituents of Table 7**

Description		2006-2011	2006-2007	2007-2008	2008-2009	2009-2010	2010-2011
Gross domestic product at current market prices	B.1*g	<b>-2.2</b>	6.2	-5.2	-9.8	-3.0	1.6
Gross national product at current market prices		<b>-3.8</b>	5.0	-5.3	-13.4	-2.0	-2.4
Gross national disposable income	B.6g	<b>-4.0</b>	4.7	-5.5	-13.7	-2.1	-2.3
Personal consumption of goods and services	P.3 (Pt)	<b>-0.8</b>	9.6	1.5	-11.7	-1.3	-0.9
Net expenditure by central and local government on current goods and services	P.3 (Pt)	<b>-0.6</b>	10.9	5.1	-4.2	-10.4	-2.9
Total consumption expenditure	P.3	<b>-0.7</b>	9.9	2.4	-9.8	-3.7	-1.4
Gross national savings	B.8g	<b>-15.0</b>	-8.5	-29.7	-31.2	7.5	-6.9
Provision for depreciation	K.1	<b>-3.3</b>	2.3	-5.4	-7.1	-5.2	-1.0
Net national savings	B.8n	<b>-32.9</b>	-16.8	-52.6	-76.4	101.9	-27.4

**Table 13 Consumption of Personal Income at Current Market Prices**

€ million

Description	2006	2007	2008	2009	2010	2011†
<b>Food, beverages and tobacco</b>	<b>16,559</b>	<b>17,646</b>	<b>17,680</b>	<b>16,447</b>	<b>15,864</b>	<b>16,517</b>
Food (excl. meals out)	7,100	7,643	7,907	7,261	6,921	7,366
Non-alcoholic beverages	519	516	549	529	498	543
Alcoholic beverages (total incl pubs)	6,803	7,230	6,966	6,326	6,253	6,377
Tobacco	2,137	2,258	2,258	2,331	2,193	2,230
<b>Clothing and footwear</b>	<b>3,755</b>	<b>3,992</b>	<b>3,854</b>	<b>3,627</b>	<b>3,293</b>	<b>3,163</b>
<b>Housing (rent, local government charges, repairs and decorations)</b>	<b>13,406</b>	<b>15,162</b>	<b>16,469</b>	<b>13,942</b>	<b>13,244</b>	<b>13,325</b>
<i>of which imputed rent</i>	<i>10,184</i>	<i>11,580</i>	<i>12,563</i>	<i>10,554</i>	<i>9,990</i>	<i>10,081</i>
<b>Fuel and power (excluding motor fuels)</b>	<b>2,759</b>	<b>3,047</b>	<b>3,465</b>	<b>3,047</b>	<b>3,081</b>	<b>3,039</b>
<b>Household equipment and operation</b>	<b>5,654</b>	<b>6,187</b>	<b>5,738</b>	<b>4,467</b>	<b>4,061</b>	<b>3,939</b>
Durable household goods	3,569	3,988	3,516	2,484	2,136	1,906
Non-durable goods and services	2,085	2,199	2,222	1,983	1,926	2,033
<b>Transport and communication</b>	<b>13,542</b>	<b>14,671</b>	<b>14,219</b>	<b>11,809</b>	<b>12,309</b>	<b>12,603</b>
Personal transport equipment	3,950	4,282	3,742	1,988	2,414	2,376
Operation of personal transport equipment (incl. motor fuels)	4,348	4,770	4,834	4,495	4,907	5,304
Public transport	2,307	2,629	2,726	2,612	2,511	2,523
Communication	2,937	2,990	2,917	2,714	2,477	2,400
<b>Recreation, entertainment and education</b>	<b>8,465</b>	<b>9,152</b>	<b>9,074</b>	<b>9,103</b>	<b>9,457</b>	<b>8,651</b>
Equipment and accessories	2,931	3,362	2,874	2,512	2,655	2,446
Services (incl. education) ‡	5,534	5,790	6,200	6,591	6,802	6,205
<b>Miscellaneous goods and services</b>	<b>19,852</b>	<b>21,564</b>	<b>21,587</b>	<b>18,983</b>	<b>18,881</b>	<b>18,692</b>
Professional services (incl. medical goods and services)	8,345	8,777	8,672	9,314	9,290	8,912
Goods (n.e.s.)	2,807	3,206	2,985	2,176	2,044	2,161
Services (n.e.s.)	6,572	7,334	7,740	7,099	7,107	6,648
FISIM (financial services indirectly measured)	2,128	2,247	2,190	394	441	971
<b>Expenditure outside the State</b>	<b>4,901</b>	<b>5,729</b>	<b>6,353</b>	<b>5,285</b>	<b>4,975</b>	<b>4,658</b>
<b>less Expenditure by non-residents</b>	<b>-4,258</b>	<b>-4,426</b>	<b>-4,287</b>	<b>-3,555</b>	<b>-3,106</b>	<b>-3,281</b>
<b>158. Personal consumption of goods and services at current market prices</b>	<b>84,634</b>	<b>92,724</b>	<b>94,153</b>	<b>83,155</b>	<b>82,060</b>	<b>81,308</b>
159. Taxes on personal income and wealth	21,407	23,558	23,410	21,684	20,897	22,420
<b>160. Total personal expenditure</b>	<b>106,041</b>	<b>116,282</b>	<b>117,563</b>	<b>104,839</b>	<b>102,957</b>	<b>103,727</b>

† Preliminary

‡ This heading no longer covers the cost of providing education in non fee paying voluntary secondary schools. This expenditure is now included with Government current expenditure.

**Table 13.1 Annual Percentage Changes in the Main Constituents of Table 13**

Description	2006-2011	2006-2007	2007-2008	2008-2009	2009-2010	2010-2011
Food	0.7	7.6	3.5	-8.2	-4.7	6.4
Non-alcoholic Beverages	0.9	-0.7	6.5	-3.6	-5.9	9.0
Alcoholic beverages	-1.3	6.3	-3.6	-9.2	-1.2	2.0
Tobacco	0.9	5.7	0.0	3.3	-5.9	1.7
Clothing and footwear	-3.4	6.3	-3.5	-5.9	-9.2	-3.9
Housing	-0.1	13.1	8.6	-15.3	-5.0	0.6
Fuel and Power	2.0	10.4	13.7	-12.1	1.1	-1.4
Household equipment and operation	-7.0	9.4	-7.2	-22.2	-9.1	-3.0
Transport and communication	-1.4	8.3	-3.1	-16.9	4.2	2.4
Recreation, entertainment and education	0.4	8.1	-0.9	0.3	3.9	-8.5
Miscellaneous goods and services	-1.2	8.6	0.1	-12.1	-0.5	-1.0
Expenditure outside the State	-1.0	16.9	10.9	-16.8	-5.9	-6.4
Expenditure by non-residents	-5.1	3.9	-3.1	-17.1	-12.6	5.6
<b>Personal consumption of goods and services</b>	<b>-0.8</b>	<b>9.6</b>	<b>1.5</b>	<b>-11.7</b>	<b>-1.3</b>	<b>-0.9</b>

**Table 14 Consumption of Personal Income (except Taxes on Personal Income and Wealth) at Constant Market Prices (chain linked annually and referenced to year 2010)**

€ million

Description	2006	2007	2008	2009	2010	2011†
<b>Food, beverages and tobacco</b>	<b>17,615</b>	<b>18,071</b>	<b>17,140</b>	<b>15,846</b>	<b>15,864</b>	<b>16,417</b>
Food (excl. meals out)	7,330	7,596	7,330	6,945	6,921	7,247
Non-alcoholic beverages	541	527	534	521	498	523
Alcoholic beverages (total incl pubs)	7,050	7,303	6,790	6,026	6,253	6,443
Tobacco	2,743	2,669	2,501	2,365	2,193	2,203
<b>Clothing and footwear</b>	<b>2,724</b>	<b>3,002</b>	<b>3,051</b>	<b>3,273</b>	<b>3,293</b>	<b>3,217</b>
<b>Housing (rent, local government charges, repairs and decorations)</b>	<b>11,869</b>	<b>12,430</b>	<b>12,889</b>	<b>13,130</b>	<b>13,244</b>	<b>13,264</b>
<i>of which imputed rent</i>	<i>8,797</i>	<i>9,274</i>	<i>9,655</i>	<i>9,874</i>	<i>9,990</i>	<i>10,063</i>
<b>Fuel and power (excluding motor fuels)</b>	<b>2,814</b>	<b>2,882</b>	<b>3,149</b>	<b>3,085</b>	<b>3,081</b>	<b>3,010</b>
<b>Household equipment and operation</b>	<b>5,017</b>	<b>5,559</b>	<b>5,229</b>	<b>4,229</b>	<b>4,061</b>	<b>4,039</b>
Durable household goods	2,868	3,320	3,045	2,311	2,136	1,995
Non-durable goods and services	2,145	2,194	2,157	1,914	1,926	2,044
<b>Transport and communication</b>	<b>14,402</b>	<b>15,278</b>	<b>14,449</b>	<b>12,259</b>	<b>12,309</b>	<b>12,135</b>
Personal transport equipment	3,539	3,818	3,356	1,874	2,414	2,488
Operation of personal transport equipment (incl. motor fuels)	5,026	5,359	5,036	5,011	4,907	4,857
Public transport	2,628	2,841	2,960	2,676	2,511	2,446
Communication	3,038	3,077	2,973	2,751	2,477	2,344
<b>Recreation, entertainment and education</b>	<b>8,403</b>	<b>9,089</b>	<b>8,829</b>	<b>8,985</b>	<b>9,457</b>	<b>8,681</b>
Equipment and accessories	2,326	2,817	2,476	2,373	2,655	2,492
Services (incl. education) ‡	6,100	6,180	6,335	6,621	6,802	6,189
<b>Miscellaneous goods and services</b>	<b>17,617</b>	<b>18,580</b>	<b>19,024</b>	<b>18,632</b>	<b>18,881</b>	<b>17,947</b>
Professional services (incl. medical goods and services)	9,118	9,318	8,797	9,196	9,290	8,644
Goods (n.e.s.)	2,536	2,893	2,684	2,055	2,044	2,180
Services (n.e.s.)	6,841	7,322	7,510	6,939	7,107	6,722
FISIM (financial services indirectly measured)	245	250	367	442	441	401
<b>Expenditure outside the State</b>	<b>5,428</b>	<b>6,141</b>	<b>6,724</b>	<b>5,363</b>	<b>4,975</b>	<b>4,556</b>
<b>less Expenditure by non-residents</b>	<b>-4,398</b>	<b>-4,357</b>	<b>-4,057</b>	<b>-3,521</b>	<b>-3,106</b>	<b>-3,199</b>
<b>161. Personal consumption of goods and services at constant market prices</b>	<b>80,806</b>	<b>85,967</b>	<b>85,909</b>	<b>81,279</b>	<b>82,060</b>	<b>80,067</b>

† Preliminary

‡ This heading no longer covers the cost of providing education in non fee paying voluntary secondary schools. This expenditure is now included with Government current expenditure.

Chain linked series not additive except for 2010 and 2011

**Table 14.1 Annual Percentage Changes in the Main Constituents of Table 14**

Description	2006-2011	2006-2007	2007-2008	2008-2009	2009-2010	2010-2011
Food	-0.2	3.6	-3.5	-5.3	-0.4	4.7
Non-alcoholic Beverages	-0.7	-2.6	1.5	-2.5	-4.5	5.1
Alcoholic beverages	-1.8	3.6	-7.0	-11.2	3.8	3.0
Tobacco	-4.3	-2.7	-6.3	-5.5	-7.3	0.4
Clothing and footwear	3.4	10.2	1.6	7.2	0.6	-2.3
Housing	2.2	4.7	3.7	1.9	0.9	0.2
Fuel and Power	1.4	2.4	9.3	-2.0	-0.1	-2.3
Household equipment and operation	-4.2	10.8	-5.9	-19.1	-4.0	-0.5
Transport and communication	-3.4	6.1	-5.4	-15.2	0.4	-1.4
Recreation, entertainment and education	0.7	8.2	-2.9	1.8	5.2	-8.2
Miscellaneous goods and services	0.4	5.5	2.4	-2.1	1.3	-4.9
Expenditure outside the State	-3.4	13.1	9.5	-20.2	-7.3	-8.4
Expenditure by non-residents	-6.2	-0.9	-6.9	-13.2	-11.8	3.0
<b>Personal consumption of goods and services</b>	<b>-0.2</b>	<b>6.4</b>	<b>-0.1</b>	<b>-5.4</b>	<b>1.0</b>	<b>-2.4</b>

**Table 15 Gross Domestic Physical Capital Formation at Current Market Prices**

€ million

Description	2006	2007	2008	2009	2010	2011†
<b>Fixed capital</b>						
Dwellings	22,626	20,056	14,507	7,560	4,592	3,887
Roads	2,023	2,453	2,504	2,088	1,401	937
Other building and construction (including land rehabilitation etc.)	8,841	10,490	10,042	6,471	4,403	3,599
Costs associated with transfer of land & buildings	4,547	3,584	1,836	637	360	377
Transport equipment	4,571	5,690	4,750	4,579	3,854	3,205
Agricultural machinery	340	397	352	179	144	214
Other machinery and equipment	4,123	4,357	3,918	2,726	2,596	2,458
Software	726	851	842	788	928	998
Exploration	301	317	379	424	301	273
Artistic originals	196	183	193	149	165	164
<b>Gross domestic fixed capital formation</b>	<b>48,294</b>	<b>48,377</b>	<b>39,324</b>	<b>25,601</b>	<b>18,745</b>	<b>16,112</b>
<b>Changes in stocks</b>						
Value of physical changes in stocks on farms	-122	-91	15	-13	-161	-65
Value of physical changes in EU intervention stocks	-116	-33	0	79	-32	-44
Value of physical changes in other stocks	1,858	1,148	-345	-1,556	-360	336
<b>Total value of physical changes in stocks</b>	<b>1,619</b>	<b>1,025</b>	<b>-330</b>	<b>-1,490</b>	<b>-553</b>	<b>227</b>
<b>162. Gross domestic physical capital formation at current market prices</b>	<b>49,913</b>	<b>49,402</b>	<b>38,994</b>	<b>24,111</b>	<b>18,192</b>	<b>16,338</b>

† Preliminary

**Table 16 Gross Domestic Fixed Capital Formation by Sector of Use at Current Market Prices**

€ million

Description	2006	2007	2008	2009	2010	2011†
Agriculture, forestry and fishing	902	1,340	1,994	652	521	610
Fuel and power products	2,170	1,946	1,979	1,964	1,898	1,541
Manufacturing products	3,412	3,130	2,824	2,267	1,979	2,231
Building and construction	678	704	362	110	62	65
Market services	38,653	38,087	29,258	18,657	12,583	10,101
Dwellings (incl. transfer costs)	24,959	21,892	15,455	7,890	4,777	4,084
Roads	2,023	2,453	2,504	2,088	1,401	937
Other market services	11,671	13,742	11,300	8,679	6,405	5,081
Non-market services	2,479	3,170	2,907	1,951	1,701	1,563
<b>163. Gross domestic fixed capital formation at current market prices</b>	<b>48,294</b>	<b>48,377</b>	<b>39,324</b>	<b>25,601</b>	<b>18,745</b>	<b>16,112</b>

† Preliminary

**Table 17 Gross Domestic Physical Capital Formation at Constant Market Prices**  
(chain linked annually and referenced to year 2010)

€ million

Description	2006	2007	2008	2009	2010	2011†
<b>Fixed capital</b>						
Dwellings	13,428	12,580	10,925	6,950	4,592	4,048
Roads	1,683	1,972	2,188	1,921	1,401	938
Other building and construction (including land rehabilitation etc.)	6,520	7,689	8,014	5,953	4,403	3,603
Costs assoc. with transfer of land & buildings	3,159	2,405	1,275	556	360	472
Transport equipment	4,588	5,689	4,740	4,513	3,854	3,236
Agricultural machinery	344	407	369	183	144	212
Other machinery and equipment	3,832	4,268	3,987	2,684	2,596	2,453
Software	781	880	819	809	928	987
Exploration	260	263	324	390	301	273
Artistic originals	170	162	173	141	165	168
<b>Gross domestic fixed capital formation</b>	<b>36,346</b>	<b>37,196</b>	<b>33,462</b>	<b>24,225</b>	<b>18,745</b>	<b>16,390</b>
<b>Changes in stocks</b>						
Value of physical changes in stocks on farms	-98	-71	18	-14	-161	-56
Value of physical changes in EU intervention stocks	-85	-24	0	68	-32	-46
Value of physical changes in other stocks	3,052	1,791	-343	-1,493	-360	311
<b>Total value of physical changes in stocks</b>	<b>2,967</b>	<b>1,773</b>	<b>-341</b>	<b>-1,465</b>	<b>-553</b>	<b>209</b>
<b>164. Gross domestic physical capital formation at constant market prices</b>	<b>37,107</b>	<b>37,462</b>	<b>32,853</b>	<b>22,788</b>	<b>18,192</b>	<b>16,599</b>

† Preliminary

Chain linked series not additive except for 2010 and 2011

**Table 18 Gross Domestic Fixed Capital Formation by Sector of Use at Constant Market Prices**  
(chain linked annually and referenced to year 2010)

€ million

Description	2006	2007	2008	2009	2010	2011†
Agriculture, forestry and fishing	816	1,215	1,817	625	521	610
Fuel and power products	1,824	1,614	1,727	1,836	1,898	1,540
Manufacturing products	3,058	2,812	2,623	2,212	1,979	2,226
Building and construction	665	695	363	108	62	65
Market services	28,126	28,470	24,620	17,607	12,583	10,380
Dwellings (incl. transfer costs)	14,998	13,803	11,599	7,239	4,777	4,292
Roads	1,683	1,972	2,188	1,921	1,401	938
Other market services	10,312	12,180	10,474	8,418	6,405	5,151
Non-market services	1,806	2,323	2,353	1,832	1,701	1,568
<b>165. Gross domestic fixed capital formation at constant market prices</b>	<b>36,346</b>	<b>37,196</b>	<b>33,462</b>	<b>24,225</b>	<b>18,745</b>	<b>16,390</b>

† Preliminary

Chain linked series not additive except for 2010 and 2011

# Annex 1

## ESA codes

The item codes in the European System of Accounts (ESA 95) are displayed in the second column of the tables. The ESA95 presentation is being used in the CSO releases on institutional sector accounts and is also used by Eurostat in their releases and publications on national accounts. The inclusion of the ESA95 codes here makes comparisons with these publications more explicit. A full list of all the codes in the ESA95 system can be found in Annex IV of the ESA95 manual<sup>1</sup>.

### ESA codes and descriptions of variables reported in this release

Code	Description
B.1	Value added
B.1*	Domestic product (B.1*g =gross domestic product; B.1*n = net domestic product)
B.2	Operating surplus
B.3	Mixed income (i.e. income of self employed)
B.5*	National income
B.6	Disposable income
B.8	Saving
B.9	Net lending / net borrowing
D.1	Compensation of employees
D.11	Wages and salaries
D.12	Employers' social contributions
D.2	Taxes (on production and imports)
D.21	Taxes on products
D.29	Other taxes on production
D.3	Subsidies (on production and imports)
D.31	Subsidies on products
D.39	Other subsidies on production
D.4	Property income (which includes distributed income of corporations and reinvested earnings)
D.41	Interest
EDP D.41	Interest including flows on swap interest
D.422	Withdrawals from income of quasi-corporations
D.51	Taxes on income
D.611	Actual social contributions
D.62	Social benefits other than social transfers in kind
D.63	Social transfers in kind
D.7	Current transfers
D.9	Capital transfers
D.91	Capital taxes
D.92	Investment grants
D.99	Other capital transfers
EDP B.9	Net lending / net borrowing adjusted for flows on interest rate swaps
K.1	Consumption of fixed capital
K.2	Acquisitions less disposals of non-financial non-produced assets
P.12	Output for own final use
P.131	Payments for other non-market output
P.2	Intermediate consumption
P.3	Final consumption expenditure
P.5	Gross capital formation
P.51	Gross fixed capital formation
P.52	Changes in inventories
P.53	Acquisitions less disposals of valuables
P.6	Exports of goods and services
P.7	Imports of goods and services

<sup>1</sup>The ESA95 manual is Annex 1 of the ESA95 Regulation (Council Regulation (EC) No 2223/96 of 25 June 1996 on the European system of national and regional accounts in the Community). Annex IV (Classifications and Accounts) of the manual begins at page 281.



## Background Notes

**Introduction** This release contains the first detailed results of the main National Accounts aggregates and their components for 2011. It includes revisions for all years from 2006 to 2010. The estimates for the most recent years, especially 2011, are based on provisional indicators for the different aggregates and are subject to revision. (A preliminary estimate of the 2011 outturn was already provided in the quarterly accounts release for Q4).

**Nace Classification** In compliance with EU regulations the Nace Rev. 2 classification system is used in tables 2 to 4. This replaces the national classification system which was used up to now.

The results for the economy continue to be shown for five sectors whose titles remain the same as in previous releases and publications. However the contents of the sectors have changed and conform to the Nace Rev. 2 system.

One of the main changes to the classification is that the “Publishing” industry has been reclassified from “Industry” to the sector “Distribution, transport, software and communication”. In addition, enterprises in the “Hotels and catering” sector have been reclassified from the “Service” sector to the “Distribution” sector. The “Software” industry was also included in “Other Services” in the old National Classification but is now part of the new category “Distribution transport, software and communications” in the NACE rev 2 classification. The overall effect on the tables has been that the “Distribution, transport, software and communications” sector accounts now for a much larger share of the total GVA of the economy than heretofore while the sectors classified as “Industry” and “Other Services” account for a lower share.

In tables 2 to 4 the following is the correspondence with the relevant sections of Nace Rev. 2:

Agriculture, forestry and fishing	Section A
Industry	Sections B to F
Distribution, transport, software and communication	Sections G to J
Public Administration and Defence	Section O
Other Services	Sections K to N and P to U

For further information on the Nace Rev. 2 classification of industrial activity, visit the CSO website:

<http://www.cso.ie/en/surveysandmethodology/classifications/classificationofindustrialactivity>

**Methodology** In Ireland, Gross Domestic Product (GDP) at current prices is calculated using two approaches viz. the *income* and *expenditure* approaches. The main components of the *income* estimate are (1) profits of companies and of the self-employed, (2) remuneration of employees (wages, salaries, pensions and employers’ contributions to social insurance) and (3) rent of dwellings (imputed in the case of owner-occupied). Adjustments are made in respect of stock appreciation (to eliminate the effect of price changes on the level of stocks). On the *expenditure* side estimates are made of personal expenditure on consumers’ goods and services, expenditure by public authorities on current goods and services, gross domestic fixed capital formation and the value of physical changes in stocks. The value of exports is then added and imports are deducted.

The two approaches (*income and expenditure*) should theoretically give the same answer. However, they will always diverge to some extent as they are measured using different data sources. The components of the two original estimates are shown unadjusted. The official level of GDP is taken to be an average of the expenditure and income estimates and a balancing item is displayed which is half of the difference between the two estimates. This is the amount by which both estimates have to be adjusted to agree with the official level of GDP.

**Volumes** At constant prices, two measures (*output and expenditure*) are used. These measures are being produced using annual chain linked indices. On the output side, for each pair of successive years, the volume growth measures at a detailed level are weighted together using value added weights of the first year. Similarly, on the expenditure side, annual growth estimates are weighted by previous year expenditure weights. The average of the two measures is the official growth measure used. The change over a period of years is then calculated by linking together the annual changes. The estimates in this release are referenced to 2010 values.

**FISIM** The revenue from the margin on lending and borrowing by financial intermediaries (mostly banks) is called financial intermediation services indirectly measured (FISIM). This margin is taken as the output of non-invoiced services produced by these financial intermediaries and has been included in the calculation of GDP since the publication of the 2004 annual results and the Q1 2005 quarterly results in July 2005.



The estimates in this release are based on more detailed and more recent data than that available at the time of publishing the quarterly estimates for 2011. In particular they incorporate revisions to the Balance of Payments figures for recent years and revised unit value indices for merchandise trade.

**Quarterly Accounts** A quarterly national accounts release incorporating these latest annual results for the quarters of 2011 and earlier years is also being published today. This includes an estimate for the first quarter of 2012. The previously published estimates for the quarters of earlier years are also revised.

**Definitions** **Gross Value Added at factor cost** is equal to the sum of the values of the goods and services (or parts thereof) produced in the country without deducting an amount in respect of capital consumption (i.e. depreciation). It excludes taxes on production and includes subsidies on production.

**Net Value added at factor cost** is equal to **Gross Value Added** at factor cost minus depreciation.

**Gross Domestic Product at market prices** is equal to **Gross Value Added** at factor cost plus taxes on production less subsidies on production. It represents total expenditure on the output of goods and services produced in the country and valued at the prices at which the expenditure is incurred.

**Gross National Product at factor cost** is equal to **Gross Value Added** at factor cost plus net factor income from the rest of the world and represents the total of all payments for productive services accruing to the permanent residents of the country. Some income accrues to Irish residents as a result of economic activity abroad or property held abroad while some income arising in the state is paid to non-residents.

**Gross National Income at market prices** is equal to **Gross National Product** at market prices plus EU subsidies less EU taxes. This is more commonly described as being equal to Gross Domestic Product plus net primary incomes from abroad.