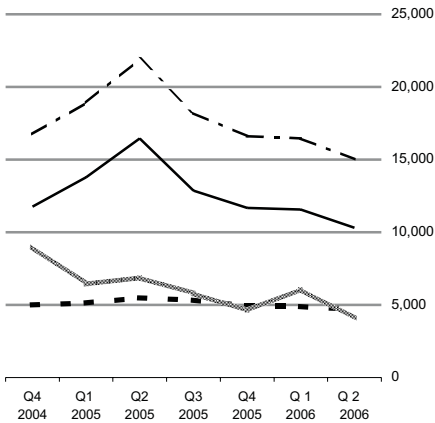




**Number of Dwelling Units approved  
classified by type of unit,  
q4 2004 - q2 2006**



## Planning Permissions Quarter 2 2006

**Number of Dwelling Units**

	Houses	Apartments	Total
<b>Apr-Jun 2005</b>	21,938	6,880	28,818
<b>Apr-Jun 2006</b>	15,014	4,083	19,097

### Dwelling units approved down 33.7% in year

This release shows that for the second quarter of 2006, planning permissions were granted for 19,097 dwelling units, compared with 28,818 units for the same period in 2005, a decrease of 33.7%.

The second quarter figures also show that:

- ◆ Planning permissions were granted for 15,014 new houses. This compares with 21,938 new houses in the same quarter of 2005, a decrease of 31.6%. *See Table 4.*
- ◆ Planning permissions were granted for 4,083 apartments in the second quarter of 2006 and 6,880 in the second quarter of 2005. This is a decrease of 40.7%. *See Tables 4 & 7.*
- ◆ One-off houses accounted for 24.6% of all new dwelling units granted planning permission in this quarter. *See Tables 4 & 5.*
- ◆ Total floor area planned was 4,824 thousand sq. metres in the second quarter of 2006. Of this, 56.7% was for new dwellings, 33.4% for other new constructions and 9.8% for extensions. The total floor area planned decreased by 15.8% in comparison with the same quarter of 2005. *See Table 1.*
- ◆ Planning Permissions for new buildings for Agriculture increased to 960 this quarter. This compares to 375 permissions in the same quarter of 2005 and 394 permissions in the first quarter of 2006. *See Table 3A.*

Published by the Central Statistics Office, Ireland.

Ardee Road  
Dublin 6  
Ireland

Skehard Road  
Cork  
Ireland

LoCall: 1890 313 414 (ROI)  
0870 8760256 (UK/NL)

Tel: +353-1 498 4000  
Fax: +353-1 498 4229

Tel: +353-21 453 5000  
Fax: +353-21 453 5555

Both offices may be contacted through any of these telephone numbers.

CSO on the Web: [www.cso.ie](http://www.cso.ie)  
and go to  
Business Sectors: Construction

Director General: Donal Garvey

Enquiries:

Building Statistics Building Section, ext 5529  
planning.permissions@cso.ie

Queries and Sales Information Section, ext 5021  
information@cso.ie

© Central Statistics Office  
The contents of this release may be quoted provided the source is given clearly and accurately. Reproduction for own or internal use is permitted.

*For more information, contact Nicola Tickner at 1890 313 414 ext 5420, Eily Fitzpatrick at 1890 313 414 ext 5529 or Fionnuala O'Riordan at 1890 313 414 ext 5621.*

**Table 1 Summary of Planning Permissions Granted, 1998 - 2006**

Period	Number of Permissions					Total Floor Area (000m <sup>2</sup> ) <sup>1</sup>			
	New Construction		Extension	Alteration and Conversion	Total	New Construction		Extension	Total
	Dwellings	Other				Dwellings	Other		
1998 Q 1	3,513	1,216	2,491	602	7,822	1,403	618	333	2,354
Q 2	3,854	1,182	3,087	671	8,794	1,383	521	388	2,292
Q 3	5,027	1,486	4,060	763	11,336	1,897	804	496	3,198
Q 4	4,325	1,296	2,938	712	9,271	1,415	605	357	2,377
<b>Year</b>	<b>16,719</b>	<b>5,180</b>	<b>12,576</b>	<b>2,748</b>	<b>37,223</b>	<b>6,098</b>	<b>2,548</b>	<b>1,574</b>	<b>10,221</b>
1999 Q 1	5,201	-	-	-	-	-	-	-	-
Q 2	5,674	-	-	-	-	-	-	-	-
Q 3	6,517	-	-	-	-	-	-	-	-
Q 4	6,203	-	-	-	-	-	-	-	-
<b>Year<sup>2</sup></b>	<b>23,595</b>	-	-	-	-	-	-	-	-
2000 Q 1	6,630	-	-	-	-	-	-	-	-
Q 2	6,597	-	-	-	-	-	-	-	-
Q 3	6,893	1,449	4,026	762	13,310	3,223	1,159	525	4,906
Q 4	6,212	1,354	3,087	612	11,265	3,019	865	417	4,301
<b>Year<sup>2</sup></b>	<b>26,332</b>	-	-	-	-	-	-	-	-
2001 Q 1	6,333	1,455	2,986	674	11,448	2,909	1,084	510	4,503
Q 2	5,538	1,465	3,030	639	10,672	2,779	921	368	4,067
Q 3	6,157	1,671	3,715	786	12,329	2,513	998	453	3,964
Q 4	5,585	1,606	3,106	754	11,051	2,262	1,020	391	3,672
<b>Year</b>	<b>23,613</b>	<b>6,197</b>	<b>12,837</b>	<b>2,853</b>	<b>45,500</b>	<b>10,463</b>	<b>4,023</b>	<b>1,722</b>	<b>16,206</b>
2002 Q 1	5,025	1,512	2,843	856	10,236	2,096	972	423	3,491
Q 2	4,547	1,349	2,883	665	9,444	2,505	873	370	3,748
Q 3	5,502	1,691	3,704	757	11,654	2,335	1,139	429	3,904
Q 4	4,654	1,374	2,892	646	9,566	1,856	1,020	401	3,277
<b>Year</b>	<b>19,728</b>	<b>5,926</b>	<b>12,322</b>	<b>2,924</b>	<b>40,900</b>	<b>8,792</b>	<b>4,004</b>	<b>1,623</b>	<b>14,420</b>
2003 Q 1	4,846	1,278	2,713	645	9,482	1,797	713	365	2,874
Q 2	5,110	1,465	3,103	677	10,355	2,509	974	345	3,828
Q 3	5,583	1,693	3,457	689	11,422	2,832	1,184	411	4,427
Q 4	5,410	1,496	2,886	566	10,358	2,473	1,066	376	3,915
<b>Year</b>	<b>20,949</b>	<b>5,932</b>	<b>12,159</b>	<b>2,577</b>	<b>41,617</b>	<b>9,611</b>	<b>3,937</b>	<b>1,497</b>	<b>15,044</b>
2004 Q 1	6,887	1,545	2,820	587	11,839	3,156	940	364	4,461
Q 2	7,563	1,660	3,511	652	13,386	3,344	1,156	398	4,898
Q 3	7,100	1,899	4,076	731	13,806	3,172	1,007	467	4,646
Q 4	5,962	1,613	3,061	605	11,241	3,123	1,155	436	4,714
<b>Year</b>	<b>27,512</b>	<b>6,717</b>	<b>13,468</b>	<b>2,575</b>	<b>50,272</b>	<b>12,795</b>	<b>4,258</b>	<b>1,665</b>	<b>18,719</b>
2005 Q 1	6,170	1,571	3,028	586	11,355	3,299	985	427	4,711
Q 2	6,722	2,068	3,845	672	13,307	3,764	1,478	488	5,730
Q 3	6,485	2,189	4,476	778	13,928	3,219	1,327	530	5,076
Q 4	5,957	1,871	3,533	653	12,014	2,883	1,167	427	4,478
<b>Year</b>	<b>25,334</b>	<b>7,699</b>	<b>14,882</b>	<b>2,689</b>	<b>50,604</b>	<b>13,165</b>	<b>4,957</b>	<b>1,872</b>	<b>19,995</b>
2006 Q 1	5,890	1,822	3,575	603	11,890	2,999	1,151	444	4,595
Q 2	5,595	2,494	4,137	666	12,892	2,737	1,612	475	4,824

<sup>1</sup> For categories where floor area is a relevant measure<sup>2</sup> A review of the series for new dwellings was undertaken and resulted in revised data for 1999 and the first half of 2000. Corresponding revised data were not available for floor area or for permissions other than for new dwellings for those periods

**Table 2 Summary of Planning Permissions granted, second quarter 2006, classified by region, county and type of development**

Planning Region and County	Number of Permissions					Total Floor Area (000 sq.m)			
	New Construction		Extension	Alteration and Conversion	Total	New Construction		Extension	Total <sup>1</sup>
	Dwellings	Other				Dwellings	Other		
<b>Border, Midland and Western</b>	<b>2,692</b>	<b>920</b>	<b>1,167</b>	<b>186</b>	<b>4,965</b>	<b>1,217</b>	<b>518</b>	<b>141</b>	<b>1,875</b>
<b>Border</b>	<b>1,219</b>	<b>433</b>	<b>555</b>	<b>71</b>	<b>2,278</b>	<b>631</b>	<b>178</b>	<b>66</b>	<b>875</b>
Cavan	211	87	84	5	387	193	39	12	245
Donegal	548	166	198	16	928	201	67	19	286
Leitrim	89	20	35	6	150	23	9	3	34
Louth	149	51	110	29	339	125	15	11	150
Monaghan	152	84	57	5	298	63	43	15	121
Sligo	70	25	71	10	176	26	6	7	39
<b>Midland</b>	<b>444</b>	<b>193</b>	<b>199</b>	<b>40</b>	<b>876</b>	<b>220</b>	<b>158</b>	<b>25</b>	<b>403</b>
Laois	81	53	69	8	211	38	64	13	115
Longford	61	31	26	2	120	22	35	3	59
Offaly	157	54	44	16	271	103	39	4	147
Westmeath	145	55	60	14	274	58	19	5	81
<b>West</b>	<b>1,029</b>	<b>294</b>	<b>413</b>	<b>75</b>	<b>1,811</b>	<b>365</b>	<b>182</b>	<b>50</b>	<b>598</b>
Galway City	23	16	55	17	111	11	10	7	29
Galway <sup>2</sup>	535	138	175	27	875	158	91	19	268
Mayo	313	73	138	22	546	145	33	19	197
Roscommon	158	67	45	9	279	52	48	5	104
<b>Southern and Eastern</b>	<b>2,903</b>	<b>1,574</b>	<b>2,970</b>	<b>480</b>	<b>7,927</b>	<b>1,520</b>	<b>1,094</b>	<b>334</b>	<b>2,948</b>
<b>Dublin</b>	<b>328</b>	<b>276</b>	<b>984</b>	<b>186</b>	<b>1,774</b>	<b>204</b>	<b>436</b>	<b>83</b>	<b>723</b>
Dublin City	138	136	385	98	757	66	76	31	173
Dun Laoghaire-Rathdown	68	44	282	31	425	19	8	22	48
Fingal	66	55	174	24	319	58	132	18	208
South Dublin	56	41	143	33	273	61	220	12	294
<b>Mid-East</b>	<b>432</b>	<b>202</b>	<b>449</b>	<b>73</b>	<b>1,156</b>	<b>267</b>	<b>125</b>	<b>55</b>	<b>447</b>
Kildare	138	66	162	25	391	109	48	15	172
Meath	152	83	153	24	412	80	61	25	166
Wicklow	142	53	134	24	353	78	16	15	109
<b>Mid-West</b>	<b>404</b>	<b>238</b>	<b>295</b>	<b>46</b>	<b>983</b>	<b>146</b>	<b>95</b>	<b>35</b>	<b>275</b>
Clare	162	78	110	20	370	54	28	9	92
Limerick City	7	18	25	10	60	1	7	1	9
Limerick <sup>2</sup>	132	76	104	10	322	50	31	11	92
North Tipperary	103	66	56	6	231	41	28	13	82
<b>South-East</b>	<b>766</b>	<b>456</b>	<b>542</b>	<b>75</b>	<b>1,839</b>	<b>390</b>	<b>255</b>	<b>88</b>	<b>733</b>
Carlow	71	51	52	9	183	52	52	7	112
Kilkenny	134	133	119	23	409	47	55	15	116
South Tipperary	137	109	114	16	376	52	67	18	138
Waterford City	10	15	26	3	54	14	15	14	44
Waterford <sup>2</sup>	114	50	90	6	260	33	26	19	78
Wexford	300	98	141	18	557	192	39	15	246
<b>South-West</b>	<b>973</b>	<b>402</b>	<b>700</b>	<b>100</b>	<b>2,175</b>	<b>514</b>	<b>182</b>	<b>74</b>	<b>770</b>
Cork City	28	23	86	9	146	20	6	8	34
Cork <sup>2</sup>	630	241	449	74	1,394	381	135	49	564
Kerry	315	138	165	17	635	113	42	17	172
<b>State</b>	<b>5,595</b>	<b>2,494</b>	<b>4,137</b>	<b>666</b>	<b>12,892</b>	<b>2,737</b>	<b>1,612</b>	<b>475</b>	<b>4,824</b>

<sup>1</sup> For categories where floor area is a relevant measure

<sup>2</sup> Excluding cities

**Table 3A Number of Planning Permissions granted, second quarter 2006, classified by region, type of development and functional category**

Type of Development and Planning Region	Functional Category								Total
	Dwellings	Commercial Buildings	Buildings for Agriculture	Industrial Buildings	Govt., Health and Education	Other Buildings for Social Use	Civil Eng.	Other	
<b>New Construction</b>									
<b>Border, Midland and Western</b>	<b>2,692</b>	<b>149</b>	<b>423</b>	<b>52</b>	<b>44</b>	<b>25</b>	<b>125</b>	<b>102</b>	<b>3,612</b>
Border	1,219	48	237	19	15	7	61	46	1,652
Midland	444	41	68	19	13	7	26	19	637
West	1,029	60	118	14	16	11	38	37	1,323
<b>Southern and Eastern</b>	<b>2,903</b>	<b>248</b>	<b>537</b>	<b>72</b>	<b>85</b>	<b>54</b>	<b>252</b>	<b>326</b>	<b>4,477</b>
Dublin	328	73	6	17	14	2	31	133	604
Mid-East	432	46	61	12	20	8	24	31	634
Mid-West	404	21	117	9	10	10	38	33	642
South-East	766	59	187	17	20	19	91	63	1,222
South-West	973	49	166	17	21	15	68	66	1,375
<b>State</b>	<b>5,595</b>	<b>397</b>	<b>960</b>	<b>124</b>	<b>129</b>	<b>79</b>	<b>377</b>	<b>428</b>	<b>8,089</b>
<b>Extension</b>									
<b>Border, Midland and Western</b>	<b>964</b>	<b>88</b>	<b>36</b>	<b>21</b>	<b>39</b>	<b>19</b>	-	-	<b>1,167</b>
Border	467	32	25	12	12	7	-	-	555
Midland	163	17	6	1	9	3	-	-	199
West	334	39	5	8	18	9	-	-	413
<b>Southern and Eastern</b>	<b>2,578</b>	<b>164</b>	<b>64</b>	<b>26</b>	<b>99</b>	<b>39</b>	-	-	<b>2,970</b>
Dublin	898	41	1	6	27	11	-	-	984
Mid-East	401	16	5	-	20	7	-	-	449
Mid-West	255	14	9	5	11	1	-	-	295
South-East	423	49	32	8	19	11	-	-	542
South-West	601	44	17	7	22	9	-	-	700
<b>State</b>	<b>3,542</b>	<b>252</b>	<b>100</b>	<b>47</b>	<b>138</b>	<b>58</b>	-	-	<b>4,137</b>
<b>Alteration and Conversion</b>									
<b>Border, Midland and Western</b>	<b>61</b>	<b>91</b>	<b>1</b>	<b>6</b>	<b>20</b>	<b>7</b>	-	-	<b>186</b>
Border	24	37	-	4	3	3	-	-	71
Midland	13	18	-	2	6	1	-	-	40
West	24	36	1	-	11	3	-	-	75
<b>Southern and Eastern</b>	<b>192</b>	<b>202</b>	<b>9</b>	<b>10</b>	<b>46</b>	<b>21</b>	-	-	<b>480</b>
Dublin	93	70	-	4	15	4	-	-	186
Mid-East	23	31	2	2	11	4	-	-	73
Mid-West	15	23	-	1	7	-	-	-	46
South-East	17	41	3	3	6	5	-	-	75
South-West	44	37	4	-	7	8	-	-	100
<b>State</b>	<b>253</b>	<b>293</b>	<b>10</b>	<b>16</b>	<b>66</b>	<b>28</b>	-	-	<b>666</b>
<b>All Developments</b>									
<b>Border, Midland and Western</b>	<b>3,717</b>	<b>328</b>	<b>460</b>	<b>79</b>	<b>103</b>	<b>51</b>	<b>125</b>	<b>102</b>	<b>4,965</b>
Border	1,710	117	262	35	30	17	61	46	2,278
Midland	620	76	74	22	28	11	26	19	876
West	1,387	135	124	22	45	23	38	37	1,811
<b>Southern and Eastern</b>	<b>5,673</b>	<b>614</b>	<b>610</b>	<b>108</b>	<b>230</b>	<b>114</b>	<b>252</b>	<b>326</b>	<b>7,927</b>
Dublin	1,319	184	7	27	56	17	31	133	1,774
Mid-East	856	93	68	14	51	19	24	31	1,156
Mid-West	674	58	126	15	28	11	38	33	983
South-East	1,206	149	222	28	45	35	91	63	1,839
South-West	1,618	130	187	24	50	32	68	66	2,175
<b>State</b>	<b>9,390</b>	<b>942</b>	<b>1,070</b>	<b>187</b>	<b>333</b>	<b>165</b>	<b>377</b>	<b>428</b>	<b>12,892</b>

- No permissions

**Table 3B Total Floor Area planned (000 sq.m) in new construction and extensions, second quarter 2006, classified by region and functional category**

Type of Development and Planning Region	Functional Category						Total <sup>1</sup>
	Dwellings	Commercial Buildings	Buildings for Agriculture	Industrial Buildings	Govt., Health and Education	Other Buildings for Social Use	
<b>New Construction</b>							
<b>Border, Midland and Western</b>	<b>1,217</b>	<b>164</b>	<b>201</b>	<b>93</b>	<b>31</b>	<b>28</b>	<b>1,734</b>
Border	631	39	106	22	7	4	809
Midland	220	51	60	31	12	5	378
West	365	74	36	40	13	20	547
<b>Southern and Eastern</b>	<b>1,520</b>	<b>442</b>	<b>248</b>	<b>315</b>	<b>63</b>	<b>26</b>	<b>2,614</b>
Dublin	204	178	3	226	29	0	640
Mid-East	267	51	31	32	6	4	392
Mid-West	146	25	57	4	5	4	241
South-East	390	138	78	15	14	10	645
South-West	514	50	79	37	9	7	696
<b>State</b>	<b>2,737</b>	<b>606</b>	<b>450</b>	<b>408</b>	<b>94</b>	<b>54</b>	<b>4,349</b>
<b>Extension</b>							
<b>Border, Midland and Western</b>	<b>68</b>	<b>33</b>	<b>14</b>	<b>10</b>	<b>11</b>	<b>4</b>	<b>141</b>
Border	32	13	10	5	4	2	66
Midland	13	7	3	0	2	1	25
West	23	14	1	4	6	2	50
<b>Southern and Eastern</b>	<b>161</b>	<b>80</b>	<b>31</b>	<b>14</b>	<b>41</b>	<b>7</b>	<b>334</b>
Dublin	47	17	1	1	15	1	83
Mid-East	30	9	12	-	3	1	55
Mid-West	16	5	3	9	2	0	35
South-East	31	32	9	2	13	2	88
South-West	37	18	6	2	8	3	74
<b>State</b>	<b>229</b>	<b>113</b>	<b>45</b>	<b>24</b>	<b>52</b>	<b>11</b>	<b>475</b>
<b>Total New Construction and Extension</b>							
<b>Border, Midland and Western</b>	<b>1,285</b>	<b>197</b>	<b>215</b>	<b>103</b>	<b>43</b>	<b>32</b>	<b>1,875</b>
Border	663	52	116	28	11	5	875
Midland	233	57	62	31	14	5	403
West	388	88	37	44	18	22	598
<b>Southern and Eastern</b>	<b>1,681</b>	<b>522</b>	<b>279</b>	<b>329</b>	<b>104</b>	<b>33</b>	<b>2,948</b>
Dublin	251	195	4	227	44	2	723
Mid-East	297	60	43	32	9	5	447
Mid-West	162	29	60	13	7	4	275
South-East	420	170	86	17	27	12	733
South-West	551	68	85	39	17	10	770
<b>State</b>	<b>2,966</b>	<b>719</b>	<b>495</b>	<b>432</b>	<b>147</b>	<b>65</b>	<b>4,824</b>

<sup>1</sup> For categories where floor area is a relevant measure

- No permissions

NOTE: 0 implies less than 500 sq.m

**Table 4 Summary of Planning Permissions Granted for new houses and apartments, 2002 - 2006**

Period	All Houses					of which Multi-Development Houses					of which One-Off Houses					Apartments	
	Number of Permissions	Number of Units	Floor Area (000 m <sup>2</sup> )	Average Floor Area per Unit (m <sup>2</sup> )	Number of Permissions	Number of Units	Floor Area (000 m <sup>2</sup> )	Average Floor Area per Unit (m <sup>2</sup> )	Number of Permissions	Number of Units	Floor Area (000 m <sup>2</sup> )	Average Floor Area per Unit (m <sup>2</sup> )	Number of Permissions	Number of Units	Floor Area (000 m <sup>2</sup> )	Average Floor Area per Unit (m <sup>2</sup> )	
2002 Q 1	4,638	12,105	1,751	144.7	436	7,903	963	121.8	4,202	4,202	788	187.6	370	4,200	336	79.9	
Q 2	4,192	15,236	2,103	138.1	411	11,455	1,382	120.7	3,781	3,781	721	190.8	350	5,163	391	75.7	
Q 3	5,091	13,501	1,951	144.5	414	8,824	1,037	117.6	4,677	4,677	914	195.5	401	4,771	368	77.2	
Q 4	4,303	10,213	1,523	149.1	359	6,269	754	120.3	3,944	3,944	769	194.9	343	4,125	327	79.2	
<b>Year</b>	<b>18,224</b>	<b>51,055</b>	<b>7,328</b>	<b>143.6</b>	<b>1,620</b>	<b>34,451</b>	<b>4,137</b>	<b>120.1</b>	<b>16,604</b>	<b>16,604</b>	<b>3,193</b>	<b>192.3</b>	<b>1,464</b>	<b>18,259</b>	<b>1,422</b>	<b>77.9</b>	
2003 Q 1	4,469	9,511	1,464	153.9	376	5,418	661	122.0	4,093	4,093	803	196.1	370	4,030	325	80.6	
Q 2	4,752	13,118	1,893	144.3	416	8,782	1,035	117.9	4,336	4,336	858	197.9	348	7,484	605	80.8	
Q 3	5,132	14,394	2,035	141.4	479	9,741	1,110	114.0	4,653	4,653	925	198.8	439	10,065	789	78.4	
Q 4	4,970	12,582	1,905	151.4	490	8,102	997	123.1	4,480	4,480	908	202.6	435	7,170	562	78.3	
<b>Year</b>	<b>19,323</b>	<b>49,605</b>	<b>7,297</b>	<b>147.1</b>	<b>1,761</b>	<b>32,043</b>	<b>3,804</b>	<b>118.7</b>	<b>17,562</b>	<b>17,562</b>	<b>3,494</b>	<b>198.9</b>	<b>1,592</b>	<b>28,749</b>	<b>2,280</b>	<b>79.3</b>	
2004 Q 1	6,426	17,054	2,509	147.1	585	11,213	1,331	118.7	5,841	5,841	1,177	201.6	457	8,347	646	77.4	
Q 2	7,123	18,653	2,770	148.5	640	12,170	1,443	118.6	6,483	6,483	1,328	204.8	425	7,313	543	74.2	
Q 3	6,647	17,097	2,580	150.9	601	11,051	1,336	120.9	6,046	6,046	1,244	205.7	446	7,399	579	78.3	
Q 4	5,555	16,772	2,428	144.8	551	11,768	1,392	118.3	5,004	5,004	1,036	207.1	403	9,018	691	76.6	
<b>Year</b>	<b>25,751</b>	<b>69,576</b>	<b>10,287</b>	<b>147.8</b>	<b>2,377</b>	<b>46,202</b>	<b>5,502</b>	<b>119.1</b>	<b>23,374</b>	<b>23,374</b>	<b>4,785</b>	<b>204.7</b>	<b>1,731</b>	<b>32,077</b>	<b>2,459</b>	<b>76.7</b>	
2005 Q 1	5,749	18,913	2,810	148.6	627	13,791	1,729	125.4	5,122	5,122	1,081	211.0	416	6,437	487	75.7	
Q 2	6,244	21,938	3,186	145.2	756	16,450	2,027	123.2	5,488	5,488	1,159	211.1	472	6,880	553	80.4	
Q 3	6,005	18,190	2,756	151.5	680	12,865	1,612	125.3	5,325	5,325	1,144	214.8	476	5,791	461	79.6	
Q 4	5,516	16,609	2,526	152.1	583	11,676	1,452	124.3	4,933	4,933	1,075	217.8	435	4,594	352	76.7	
<b>Year</b>	<b>23,514</b>	<b>75,650</b>	<b>11,278</b>	<b>149.1</b>	<b>2,646</b>	<b>54,782</b>	<b>6,820</b>	<b>124.5</b>	<b>20,868</b>	<b>20,868</b>	<b>4,458</b>	<b>213.6</b>	<b>1,799</b>	<b>23,702</b>	<b>1,854</b>	<b>78.2</b>	
2006 Q 1	5,500	16,454	2,504	152.2	602	11,556	1,433	124.0	4,898	4,898	1,071	218.7	385	6,070	485	79.8	
Q 2	5,259	15,014	2,413	160.7	563	10,318	1,359	131.7	4,696	4,696	1,055	224.6	327	4,083	316	77.5	

**Table 5 Details of Planning Permissions granted for new one-off houses, second quarter 2006, classified by region and county**

Planning Region and County	Number of Permissions	Number of Units	Floor Area (000 sq.m)	Average Floor Area per Unit (sq.m)
<b>One-Off Houses</b>				
<b>Border, Midland and Western</b>	<b>2,350</b>	<b>2,350</b>	<b>537</b>	<b>228.5</b>
<b>Border</b>	<b>1,057</b>	<b>1,057</b>	<b>246</b>	<b>232.4</b>
Cavan	183	183	47	254.6
Donegal	472	472	103	219.2
Leitrim	84	84	17	198.6
Louth	123	123	29	237.6
Monaghan	133	133	35	262.1
Sligo	62	62	15	238.1
<b>Midland</b>	<b>383</b>	<b>383</b>	<b>91</b>	<b>236.5</b>
Laois	73	73	18	246.2
Longford	53	53	12	233.2
Offaly	130	130	30	229.6
Westmeath	127	127	30	239.3
<b>West</b>	<b>910</b>	<b>910</b>	<b>201</b>	<b>220.6</b>
Galway City	13	13	3	252.6
Galway <sup>2</sup>	491	491	108	219.1
Mayo	269	269	60	224.5
Roscommon	137	137	30	215.5
<b>Southern and Eastern</b>	<b>2,346</b>	<b>2,346</b>	<b>518</b>	<b>220.7</b>
<b>Dublin</b>	<b>207</b>	<b>207</b>	<b>34</b>	<b>163.1</b>
Dublin City	78	78	9	118.1
Dun Laoghaire-Rathdown	51	51	9	184.8
Fingal	46	46	11	228.4
South Dublin	32	32	5	144.1
<b>Mid-East</b>	<b>350</b>	<b>350</b>	<b>88</b>	<b>251.1</b>
Kildare	108	108	27	249.9
Meath	132	132	37	278.9
Wicklow	110	110	24	219.0
<b>Mid-West</b>	<b>362</b>	<b>362</b>	<b>83</b>	<b>228.3</b>
Clare	154	154	34	218.4
Limerick City	2	2	0	104.5
Limerick <sup>2</sup>	117	117	27	229.7
North Tipperary	89	89	22	246.5
<b>South-East</b>	<b>620</b>	<b>620</b>	<b>144</b>	<b>232.0</b>
Carlow	63	63	16	246.5
Kilkenny	112	112	28	247.1
South Tipperary	115	115	25	221.4
Waterford City	6	6	2	294.5
Waterford <sup>2</sup>	105	105	24	227.4
Wexford	219	219	50	226.3
<b>South-West</b>	<b>807</b>	<b>807</b>	<b>170</b>	<b>210.1</b>
Cork City	5	5	1	207.4
Cork <sup>2</sup>	536	536	114	211.9
Kerry	266	266	55	206.7
<b>State</b>	<b>4,696</b>	<b>4,696</b>	<b>1,055</b>	<b>224.6</b>

<sup>2</sup> Excluding cities

**Table 6 Details of Planning Permissions granted for new houses<sup>3</sup>, second quarter 2006, classified by region and county**

Planning Region and County	Number of Permissions	Number of Units	Floor Area (000 sq.m)	Average Floor Area per Unit (sq.m)
<b>Houses<sup>3</sup></b>				
<b>Border, Midland and Western</b>	<b>222</b>	<b>4,126</b>	<b>575</b>	<b>139.4</b>
<b>Border</b>	<b>115</b>	<b>2,206</b>	<b>336</b>	<b>152.1</b>
Cavan	22	898	132	146.7
Donegal	60	562	91	161.7
Leitrim	2	32	4	138.8
Louth	16	479	80	166.6
Monaghan	10	155	18	116.5
Sligo	5	80	11	133.4
<b>Midland</b>	<b>36</b>	<b>938</b>	<b>110</b>	<b>117.2</b>
Laois	5	163	18	109.3
Longford	5	76	8	103.5
Offaly	14	507	60	118.7
Westmeath	12	192	24	125.1
<b>West</b>	<b>71</b>	<b>982</b>	<b>129</b>	<b>131.8</b>
Galway City	3	16	2	138.3
Galway <sup>2</sup>	23	291	43	146.5
Mayo	29	531	65	122.5
Roscommon	16	144	20	136.0
<b>Southern and Eastern</b>	<b>341</b>	<b>6,192</b>	<b>784</b>	<b>126.5</b>
<b>Dublin</b>	<b>54</b>	<b>553</b>	<b>83</b>	<b>150.0</b>
Dublin City	17	55	7	120.2
Dun Laoghaire-Rathdown	9	45	8	176.3
Fingal	16	233	39	169.1
South Dublin	12	220	29	132.0
<b>Mid-East</b>	<b>45</b>	<b>1,167</b>	<b>137</b>	<b>117.2</b>
Kildare	18	635	70	110.0
Meath	11	241	33	135.1
Wicklow	16	291	34	118.1
<b>Mid-West</b>	<b>29</b>	<b>485</b>	<b>56</b>	<b>115.7</b>
Clare	7	164	19	113.8
Limerick City	2	5	1	100.4
Limerick <sup>2</sup>	12	199	22	112.5
North Tipperary	8	117	15	124.5
<b>South-East</b>	<b>106</b>	<b>1,627</b>	<b>217</b>	<b>133.2</b>
Carlow	6	222	36	160.0
Kilkenny	12	107	15	135.6
South Tipperary	13	221	24	107.9
Waterford City	2	103	11	106.1
Waterford <sup>2</sup>	5	46	8	170.9
Wexford	68	928	124	133.7
<b>South-West</b>	<b>107</b>	<b>2,360</b>	<b>291</b>	<b>123.3</b>
Cork City	7	38	4	109.5
Cork <sup>2</sup>	62	1,931	233	120.8
Kerry	38	391	54	136.9
<b>State</b>	<b>563</b>	<b>10,318</b>	<b>1,359</b>	<b>131.7</b>

<sup>2</sup> Excluding cities

<sup>3</sup> Excluding one-off houses



**Table 7 Details of Planning Permissions granted for new apartments, second quarter 2006, classified by region and county**

Planning Region and County	Number of Permissions	Number of Units	Floor Area (000 sq.m)	Average Floor Area per Unit (sq.m)
<b>Apartments</b>				
<b>Border, Midland and Western</b>	<b>118</b>	<b>1,268</b>	<b>103</b>	<b>81.2</b>
<b>Border</b>	<b>47</b>	<b>615</b>	<b>50</b>	<b>80.7</b>
Cavan	6	145	15	103.8
Donegal	16	92	7	72.3
Leitrim	3	15	2	116.3
Louth	10	225	16	69.7
Monaghan	9	129	10	76.1
Sligo	3	9	1	78.2
<b>Midland</b>	<b>25</b>	<b>251</b>	<b>20</b>	<b>79.3</b>
Laois	3	23	2	89.2
Longford	3	19	1	74.9
Offaly	13	167	13	79.1
Westmeath	6	42	3	77.0
<b>West</b>	<b>46</b>	<b>402</b>	<b>33</b>	<b>83.2</b>
Galway City	6	58	4	73.3
Galway <sup>2</sup>	20	88	7	79.7
Mayo	15	227	20	86.7
Roscommon	5	29	3	86.5
<b>Southern and Eastern</b>	<b>209</b>	<b>2,815</b>	<b>213</b>	<b>75.8</b>
<b>Dublin</b>	<b>65</b>	<b>1,076</b>	<b>87</b>	<b>80.7</b>
Dublin City	41	684	50	72.7
Dun Laoghaire-Rathdown	8	26	2	61.6
Fingal	4	95	8	83.7
South Dublin	12	271	28	101.8
<b>Mid-East</b>	<b>35</b>	<b>519</b>	<b>41</b>	<b>79.7</b>
Kildare	11	176	12	66.4
Meath	8	137	10	75.1
Wicklow	16	206	19	94.1
<b>Mid-West</b>	<b>12</b>	<b>59</b>	<b>5</b>	<b>77.2</b>
Clare	1	26	2	80.8
Limerick City	3	3	0	108.7
Limerick <sup>2</sup>	3	8	0	59.4
North Tipperary	5	22	2	75.0
<b>South-East</b>	<b>39</b>	<b>419</b>	<b>29</b>	<b>68.8</b>
Carlow	2	5	1	141.2
Kilkenny	9	56	4	75.5
South Tipperary	9	49	3	65.2
Waterford City	2	26	2	67.2
Waterford <sup>2</sup>	4	9	1	87.2
Wexford	13	274	18	66.2
<b>South-West</b>	<b>58</b>	<b>742</b>	<b>52</b>	<b>69.8</b>
Cork City	15	168	13	78.8
Cork <sup>2</sup>	32	502	34	67.7
Kerry	11	72	5	63.8
<b>State</b>	<b>327</b>	<b>4,083</b>	<b>316</b>	<b>77.5</b>

<sup>2</sup> Excluding cities

## Background Notes

### Scope and Background

Details of the scope and background of this series were given in the March 1973 Statistical Bulletin. The Planning and Development Acts 1963 – 2000, imposes certain requirements on builders, developers and all other persons who propose to build or develop and specifies that a planning permission must be obtained from the relevant Planning Authority.

Local authority building (including housing) is exempt in the case where construction takes place in the Authorities' own area. Therefore, works undertaken by a local authority outside its functional area come within the scope of the Acts, and need planning permission. Planning permission is also needed for development by the State, except where the consultation procedures provided for in the Local Government (Planning and Development) Act, 1993 obtain (e.g. national security, public safety or order, the administration of justice etc.). This series only provides coverage where development is subject to the requirement to obtain planning permission.

This series is also available using the interactive tables in Database Direct on [www.cso.ie](http://www.cso.ie).

### Regions

The Local Government Act 1991 (Regional Authorities) (Establishment) Order, 1993, which came into operation on 1 January 1994, established eight new Regions. The CSO has adopted these in place of the old Planning Regions as the basis for the regional breakdown of planning permissions data.

### Classification

Planning permissions are classified by type of development, local authority district and by regional authority. A distinction is made between residential and non-residential building and civil engineering.

### Coverage

Only final grants of permission or approvals are covered, i.e. only works which involve construction. The following permissions are excluded since they do not entail construction per se:

- Changes of a technical and business nature as distinct from a building or structural nature;
- Outline permission;
- Retention of an existing building;
- Changes to existing plan;
- Bye-law permission;
- Refusals - permissions subsequently granted on appeal by An Bord Pleanála are included.

### Rounding

As the figures for floor area have been rounded there may be slight discrepancies between the sum of the constituent items and the totals shown.

Estimates are included where complete details of floor area size are not available.

**NUTS2 and NUTS3 regions**

The regional classifications in this release are based on the NUTS (Nomenclature of Territorial Units) classification used by Eurostat. The NUTS3 regions correspond to the eight Regional Authorities established under the Local Government Act, 1991 (Regional Authorities) (Establishment) Order, 1993, which came into operation on 1 January 1994. The NUTS2 regions, which were proposed by Government and agreed by Eurostat in 1999, are groupings of the NUTS3 regions. The composition of the regions is set out below.

<b>Border, Midlands and Western NUTS2 Region</b>		<b>Southern and Eastern NUTS2 Region</b>	
<b>Border</b>	Cavan Donegal Leitrim Louth Monaghan Sligo	<b>Dublin</b>	Dublin City Dun Laoghaire-Rathdown Fingal South Dublin
<b>Midland</b>	Laoighis Longford Offaly Westmeath	<b>Mid-East</b>	Kildare Meath Wicklow
<b>West</b>	Galway City Galway County Mayo Roscommon	<b>Mid-West</b>	Clare Limerick City Limerick County North Tipperary
		<b>South-East</b>	Carlow Kilkenny South Tipperary Waterford City Waterford County Wexford
		<b>South-West</b>	Cork City Cork County Kerry