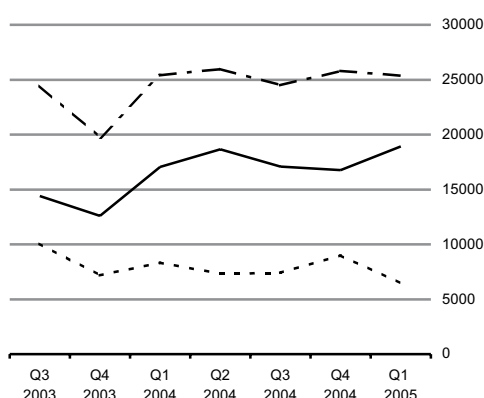
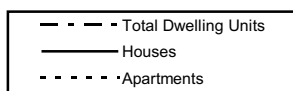




## Planning Permissions Quarter 1 2005

### Dwelling Units



### Number of Dwelling Units

	Houses	Apartments	Total
<b>Jan-Mar 2004</b>	17,054	8,347	25,401
<b>Jan-Mar 2005</b>	18,913	6,437	25,350

### New Houses approved up 10.9%

This release shows that for the first quarter of 2005, planning permissions were granted for 18,913 new houses, compared with 17,054 units for the same period in 2004, an increase of 10.9%. *See Table 4.*

The first quarter figures also show that:

- ◆ Planning permissions were granted for 25,350 new dwellings. This is a slight decrease when compared to the same quarter of 2004 when there were 25,401 planning permissions granted. *See Table 4.*
- ◆ Planning permissions were granted for 6,437 new apartments in the first quarter of 2005 and 8,347 in the first quarter of 2004. This is a decrease of 22.9%. *See Table 7.*
- ◆ One-off houses accounted for 27.1% of all new dwelling units granted planning permission in this quarter. This compares with 34.3% for the same period in 2004. *See Table 5.*
- ◆ Total floor area planned was 4,711 thousand sq. metres in the first quarter of 2005. Of this, 70.0% was for new dwellings, 20.9% for other new constructions and 9.1% for extensions. The total floor area planned increased by 5.6% in comparison with the same quarter of 2004. *See Table 1.*

Published by the Central Statistics Office, Ireland.

Ardee Road  
Dublin 6  
Ireland

Skehard Road  
Cork  
Ireland

LoCall: 1890 313 414

Tel: +353-1 498 4000  
Fax: +353-1 498 4229

Tel: +353-21 453 5000  
Fax: +353-21 453 5555

Both offices may be contacted through any of these telephone numbers.

CSO on the Web: [www.cso.ie](http://www.cso.ie)  
and go to  
Business Sectors: Construction

Director General: Donal Garvey

Enquiries:

Building Statistics  
Queries and Sales

Building Section, ext 5529  
Information Section, ext 5032  
[information@cso.ie](mailto:information@cso.ie)

© Central Statistics Office  
The contents of this release may be quoted provided the source is given clearly and accurately. Reproduction for own or internal use is permitted.

*For more information, contact Nicola Tickner at 1890 313 414 ext 5420 or Eily Fitzpatrick at 1890 313 414 ext 5529 or Iris McCarthy at 1890 313 414 ext 5527*

**Table 1 Summary of Planning Permissions Granted, 1998-2005**

Period	Number of Permissions					Total Floor Area (000 m)			
	New Construction		Extension	Alteration and Conversion	Total	New Construction		Extension	Total
	Dwellings	Other				Dwellings	Other		
1998 1st Quarter	3,513	1,216	2,491	602	7,822	1,403	618	333	2,354
2nd "	3,854	1,182	3,087	671	8,794	1,383	521	388	2,292
3rd "	5,027	1,486	4,060	763	11,336	1,897	804	496	3,198
4th "	4,325	1,296	2,938	712	9,271	1,415	605	357	2,377
<b>Year</b>	<b>16,719</b>	<b>5,180</b>	<b>12,576</b>	<b>2,748</b>	<b>37,223</b>	<b>6,098</b>	<b>2,548</b>	<b>1,574</b>	<b>10,221</b>
1999 1st Quarter	5,201	–	–	–	–	–	–	–	–
2nd "	5,674	–	–	–	–	–	–	–	–
3rd "	6,517	–	–	–	–	–	–	–	–
4th "	6,203	–	–	–	–	–	–	–	–
<b>Year</b>	<b>23,595</b>	<b>–</b>	<b>–</b>	<b>–</b>	<b>–</b>	<b>–</b>	<b>–</b>	<b>–</b>	<b>–</b>
2000 1st Quarter	6,630	–	–	–	–	–	–	–	–
2nd "	6,597	–	–	–	–	–	–	–	–
3rd "	6,893	1,449	4,026	762	13,310	3,223	1,159	525	4,906
4th "	6,212	1,354	3,087	612	11,265	3,019	865	417	4,301
<b>Year</b>	<b>26,332</b>	<b>–</b>	<b>–</b>	<b>–</b>	<b>–</b>	<b>–</b>	<b>–</b>	<b>–</b>	<b>–</b>
2001 <sup>1</sup> 1st Quarter	6,333	1,455	2,986	674	11,448	2,909	1,084	510	4,503
2nd "	5,538	1,465	3,030	639	10,672	2,779	921	368	4,067
3rd "	6,157	1,671	3,715	786	12,329	2,513	998	453	3,964
4th "	5,585	1,606	3,106	754	11,051	2,262	1,020	391	3,672
<b>Year</b>	<b>23,613</b>	<b>6,197</b>	<b>12,837</b>	<b>2,853</b>	<b>45,500</b>	<b>10,463</b>	<b>4,023</b>	<b>1,722</b>	<b>16,206</b>
2002 1st Quarter	5,025	1,512	2,843	856	10,236	2,096	972	423	3,491
2nd "	4,547	1,349	2,883	665	9,444	2,505	873	370	3,748
3rd "	5,502	1,691	3,704	757	11,654	2,335	1,139	429	3,904
4th "	4,654	1,374	2,892	646	9,566	1,856	1,020	401	3,277
<b>Year</b>	<b>19,728</b>	<b>5,926</b>	<b>12,322</b>	<b>2,924</b>	<b>40,900</b>	<b>8,792</b>	<b>4,004</b>	<b>1,623</b>	<b>14,420</b>
2003 1st Quarter	4,846	1,278	2,713	645	9,482	1,797	713	365	2,874
2nd "	5,110	1,465	3,103	677	10,355	2,509	974	345	3,828
3rd "	5,583	1,693	3,457	689	11,422	2,832	1,184	411	4,427
4th "	5,410	1,496	2,886	566	10,358	2,473	1,066	376	3,915
<b>Year</b>	<b>20,949</b>	<b>5,932</b>	<b>12,159</b>	<b>2,577</b>	<b>41,617</b>	<b>9,611</b>	<b>3,937</b>	<b>1,497</b>	<b>15,044</b>
2004 1st Quarter	6,887	1,545	2,820	587	11,839	3,156	940	364	4,461
2nd "	7,563	1,660	3,511	652	13,386	3,344	1,156	398	4,898
3rd "	7,100	1,899	4,076	731	13,806	3,172	1,007	467	4,646
4th "	5,962	1,613	3,061	605	11,241	3,123	1,155	436	4,714
<b>Year</b>	<b>27,512</b>	<b>6,717</b>	<b>13,468</b>	<b>2,575</b>	<b>50,272</b>	<b>12,795</b>	<b>4,258</b>	<b>1,665</b>	<b>18,719</b>
2005 1st Quarter	6,170	1,571	3,028	586	11,355	3,299	985	427	4,711

<sup>1</sup> For categories where floor area is a relevant measure

<sup>2</sup> A review of the series for new dwellings was undertaken and resulted in revised data for 1999 and the first half of 2000. Corresponding revised data were not available for floor area or for permissions other than for new dwellings for those periods.

**Table 2 Summary of Planning Permissions granted, first quarter 2005, classified by region, county and type of development.**

Planning Region and County	Number of Permissions					Total Floor Area (000 sq.m)			
	New Construction		Extension	Alteration and Conversion	Total	New Construction		Extension	Total <sup>1</sup>
	Dwellings	Other				Dwellings	Other		
<b>Border, Midland and Western</b>	<b>3,118</b>	<b>532</b>	<b>918</b>	<b>181</b>	<b>4,749</b>	<b>1,490</b>	<b>283</b>	<b>110</b>	<b>1,883</b>
<b>Border</b>	<b>1,433</b>	<b>291</b>	<b>456</b>	<b>86</b>	<b>2,266</b>	<b>673</b>	<b>171</b>	<b>55</b>	<b>899</b>
Cavan	221	37	40	2	300	115	16	5	136
Donegal	487	93	174	31	785	230	51	19	299
Leitrim	256	21	52	2	331	74	8	5	87
Louth	130	61	91	31	313	97	54	9	160
Monaghan	149	46	43	11	249	84	11	8	104
Sligo	190	33	56	9	288	73	32	9	113
<b>Midland</b>	<b>566</b>	<b>90</b>	<b>179</b>	<b>31</b>	<b>866</b>	<b>346</b>	<b>44</b>	<b>21</b>	<b>411</b>
Laois	112	25	45	5	187	88	11	6	105
Longford	249	23	48	4	324	165	15	5	186
Offaly	117	24	40	11	192	48	10	5	63
Westmeath	88	18	46	11	163	45	8	5	57
<b>West</b>	<b>1,119</b>	<b>151</b>	<b>283</b>	<b>64</b>	<b>1,617</b>	<b>471</b>	<b>68</b>	<b>34</b>	<b>573</b>
Galway City	32	3	1	1	37	28	1	0	29
Galway <sup>2</sup>	493	56	137	35	721	167	15	16	198
Mayo	346	56	99	20	521	147	39	12	198
Roscommon	248	36	46	8	338	128	14	5	147
<b>Southern and Eastern</b>	<b>3,052</b>	<b>1,039</b>	<b>2,110</b>	<b>405</b>	<b>6,606</b>	<b>1,809</b>	<b>702</b>	<b>317</b>	<b>2,828</b>
<b>Dublin</b>	<b>350</b>	<b>282</b>	<b>719</b>	<b>165</b>	<b>1,516</b>	<b>307</b>	<b>242</b>	<b>89</b>	<b>638</b>
Dublin City	124	143	322	83	672	140	66	30	236
Dun Laoghaire-Rathdown	69	31	134	25	259	24	6	26	56
Fingal	93	65	149	33	340	93	139	25	257
South Dublin	64	43	114	24	245	49	31	8	88
<b>Mid-East</b>	<b>432</b>	<b>139</b>	<b>295</b>	<b>47</b>	<b>913</b>	<b>369</b>	<b>183</b>	<b>35</b>	<b>587</b>
Kildare	141	39	140	12	332	169	21	16	207
Meath	178	76	132	25	411	127	106	17	250
Wicklow	113	24	23	10	170	72	56	2	130
<b>Mid-West</b>	<b>577</b>	<b>159</b>	<b>273</b>	<b>57</b>	<b>1,066</b>	<b>256</b>	<b>77</b>	<b>80</b>	<b>413</b>
Clare	188	48	86	18	340	92	26	10	128
Limerick City	13	23	35	5	76	14	23	4	41
Limerick <sup>2</sup>	261	55	98	14	428	103	13	58	174
North Tipperary	115	33	54	20	222	46	15	9	70
<b>South-East</b>	<b>730</b>	<b>206</b>	<b>353</b>	<b>73</b>	<b>1,362</b>	<b>329</b>	<b>84</b>	<b>45</b>	<b>458</b>
Carlow	77	28	45	9	159	61	21	8	90
Kilkenny	147	52	70	18	287	89	8	10	107
South Tipperary	102	33	56	8	199	41	8	5	54
Waterford City	6	20	23	9	58	22	16	6	44
Waterford <sup>2</sup>	82	22	54	1	159	25	5	5	34
Wexford	316	51	105	28	500	91	26	12	130
<b>South-West</b>	<b>963</b>	<b>253</b>	<b>470</b>	<b>63</b>	<b>1,749</b>	<b>549</b>	<b>116</b>	<b>68</b>	<b>732</b>
Cork City	34	11	60	3	108	14	6	5	26
Cork <sup>2</sup>	572	171	287	51	1,081	397	80	31	508
Kerry	357	71	123	9	560	137	29	31	198
<b>State</b>	<b>6,170</b>	<b>1,571</b>	<b>3,028</b>	<b>586</b>	<b>11,355</b>	<b>3,299</b>	<b>985</b>	<b>427</b>	<b>4,711</b>

<sup>1</sup> For categories where floor area is a relevant measure

<sup>2</sup> Excluding cities

**Table 3A Number of Planning Permissions granted, first quarter 2005, classified by region, type of development and functional category.**

Type of Development and Planning Region	Functional Category								Total
	Dwellings	Commercial Buildings	Buildings for Agriculture	Industrial Buildings	Govt., Health and Education	Other Buildings for Social Use	Civil Eng.	Other	
<b>New Construction</b>									
<b>Border, Midland and Western</b>	<b>3,118</b>	<b>169</b>	<b>65</b>	<b>38</b>	<b>42</b>	<b>22</b>	<b>90</b>	<b>106</b>	<b>3,650</b>
Border	1,433	95	35	16	15	15	49	66	1,724
Midland	566	29	9	14	10	3	12	13	656
West	1,119	45	21	8	17	4	29	27	1,270
<b>Southern and Eastern</b>	<b>3,052</b>	<b>245</b>	<b>143</b>	<b>70</b>	<b>73</b>	<b>51</b>	<b>190</b>	<b>267</b>	<b>4,091</b>
Dublin	350	85	3	17	20	10	35	112	632
Mid-East	432	40	20	7	11	12	14	35	571
Mid-West	577	34	30	6	10	3	42	34	736
South-East	730	37	39	21	15	12	40	42	936
South-West	963	49	51	19	17	14	59	44	1,216
<b>State</b>	<b>6,170</b>	<b>414</b>	<b>208</b>	<b>108</b>	<b>115</b>	<b>73</b>	<b>280</b>	<b>373</b>	<b>7,741</b>
<b>Extension</b>									
<b>Border, Midland and Western</b>	<b>747</b>	<b>102</b>	<b>11</b>	<b>15</b>	<b>30</b>	<b>13</b>	-	-	<b>918</b>
Border	362	59	9	5	15	6	-	-	456
Midland	144	21	2	3	5	4	-	-	179
West	241	22	-	7	10	3	-	-	283
<b>Southern and Eastern</b>	<b>1,761</b>	<b>188</b>	<b>33</b>	<b>27</b>	<b>70</b>	<b>31</b>	-	-	<b>2,110</b>
Dublin	632	54	1	4	21	7	-	-	719
Mid-East	253	22	2	3	8	7	-	-	295
Mid-West	218	32	5	2	11	5	-	-	273
South-East	284	35	13	7	9	5	-	-	353
South-West	374	45	12	11	21	7	-	-	470
<b>State</b>	<b>2,508</b>	<b>290</b>	<b>44</b>	<b>42</b>	<b>100</b>	<b>44</b>	-	-	<b>3,028</b>
<b>Alteration and Conversion</b>									
<b>Border, Midland and Western</b>	<b>45</b>	<b>92</b>	<b>2</b>	<b>11</b>	<b>23</b>	<b>8</b>	-	-	<b>181</b>
Border	20	46	-	6	9	5	-	-	86
Midland	9	13	-	2	7	-	-	-	31
West	16	33	2	3	7	3	-	-	64
<b>Southern and Eastern</b>	<b>138</b>	<b>199</b>	<b>5</b>	<b>12</b>	<b>39</b>	<b>12</b>	-	-	<b>405</b>
Dublin	68	64	-	4	23	6	-	-	165
Mid-East	18	25	2	-	1	1	-	-	47
Mid-West	17	34	-	2	3	1	-	-	57
South-East	16	42	2	4	7	2	-	-	73
South-West	19	34	1	2	5	2	-	-	63
<b>State</b>	<b>183</b>	<b>291</b>	<b>7</b>	<b>23</b>	<b>62</b>	<b>20</b>	-	-	<b>586</b>
<b>All Developments</b>									
<b>Border, Midland and Western</b>	<b>3,910</b>	<b>363</b>	<b>78</b>	<b>64</b>	<b>95</b>	<b>43</b>	<b>90</b>	<b>106</b>	<b>4,749</b>
Border	1,815	200	44	27	39	26	49	66	2,266
Midland	719	63	11	19	22	7	12	13	866
West	1,376	100	23	18	34	10	29	27	1,617
<b>Southern and Eastern</b>	<b>4,951</b>	<b>632</b>	<b>181</b>	<b>109</b>	<b>182</b>	<b>94</b>	<b>190</b>	<b>267</b>	<b>6,606</b>
Dublin	1,050	203	4	25	64	23	35	112	1,516
Mid-East	703	87	24	10	20	20	14	35	913
Mid-West	812	100	35	10	24	9	42	34	1,066
South-East	1,030	114	54	32	31	19	40	42	1,362
South-West	1,356	128	64	32	43	23	59	44	1,749
<b>State</b>	<b>8,861</b>	<b>995</b>	<b>259</b>	<b>173</b>	<b>277</b>	<b>137</b>	<b>280</b>	<b>373</b>	<b>11,355</b>

- No permissions

**Table 3B Total Floor Area planned (000 sq.m) in new construction and extensions, first quarter 2005, classified by region and functional category.**

Type of Development and Planning Region	Functional Category						Total <sup>1</sup>
	Dwellings	Commercial Buildings	Buildings for Agriculture	Industrial Buildings	Govt., Health and Education	Other Buildings for Social Use	
<b>New Construction</b>							
<b>Border, Midland and Western</b>	<b>1,490</b>	<b>174</b>	<b>22</b>	<b>52</b>	<b>23</b>	<b>12</b>	<b>1,773</b>
Border	673	113	14	24	9	9	844
Midland	346	19	1	20	3	1	390
West	471	42	6	7	10	2	539
<b>Southern and Eastern</b>	<b>1,809</b>	<b>419</b>	<b>58</b>	<b>87</b>	<b>67</b>	<b>71</b>	<b>2,511</b>
Dublin	307	193	2	26	11	10	549
Mid-East	369	105	8	15	17	38	552
Mid-West	256	47	16	1	13	0	333
South-East	329	38	11	14	10	12	413
South-West	549	37	22	32	16	10	664
<b>State</b>	<b>3,299</b>	<b>593</b>	<b>80</b>	<b>139</b>	<b>90</b>	<b>83</b>	<b>4,284</b>
<b>Extension</b>							
<b>Border, Midland and Western</b>	<b>52</b>	<b>31</b>	<b>6</b>	<b>11</b>	<b>8</b>	<b>2</b>	<b>110</b>
Border	25	17	5	4	4	1	55
Midland	11	6	1	2	1	1	21
West	17	8	-	5	3	1	34
<b>Southern and Eastern</b>	<b>110</b>	<b>98</b>	<b>12</b>	<b>59</b>	<b>30</b>	<b>8</b>	<b>317</b>
Dublin	33	39	1	1	12	2	89
Mid-East	20	7	1	2	4	1	35
Mid-West	15	16	2	43	3	1	80
South-East	18	13	3	4	5	1	45
South-West	24	23	5	9	5	1	68
<b>State</b>	<b>162</b>	<b>129</b>	<b>19</b>	<b>69</b>	<b>38</b>	<b>10</b>	<b>427</b>
<b>Total New Construction and Extension</b>							
<b>Border, Midland and Western</b>	<b>1,542</b>	<b>205</b>	<b>28</b>	<b>63</b>	<b>30</b>	<b>15</b>	<b>1,883</b>
Border	697	130	19	28	13	10	899
Midland	357	25	2	22	4	2	411
West	487	50	6	13	13	3	573
<b>Southern and Eastern</b>	<b>1,919</b>	<b>517</b>	<b>71</b>	<b>145</b>	<b>98</b>	<b>78</b>	<b>2,828</b>
Dublin	340	232	2	27	23	13	638
Mid-East	389	113	9	16	21	39	587
Mid-West	271	63	19	43	16	2	413
South-East	347	51	14	17	15	13	458
South-West	573	59	27	41	21	11	732
<b>State</b>	<b>3,461</b>	<b>722</b>	<b>99</b>	<b>208</b>	<b>128</b>	<b>93</b>	<b>4,711</b>

<sup>1</sup> For categories where floor area is a relevant measure

- No permissions

NOTE: 0 implies less than 500 sq.m

**Table 4 Summary of Planning Permissions Granted for new houses and apartments, 1998-2005**

Period	Houses				Apartments			
	Number of Permissions	Number of Units	Floor Area (000 m)	Average Floor Area per Unit (m)	Number of Permissions	Number of Units	Floor Area (000 m)	Average Floor Area per Unit (m)
1998 1st Quarter	3,304	9,280	1,286	138.5	206	1,600	115	71.6
2nd "	3,632	9,170	1,251	136.4	218	1,980	128	64.7
3rd "	4,792	12,232	1,754	143.4	234	2,035	143	70.5
4th "	4,119	9,276	1,283	138.3	204	1,816	130	71.8
<b>Year</b>	<b>15,847</b>	<b>39,958</b>	<b>5,574</b>	<b>139.5</b>	<b>862</b>	<b>7,431</b>	<b>516</b>	<b>69.5</b>
1999 1st Quarter	–	14,370	–	–	–	3,194	–	–
2nd "	–	14,303	–	–	–	3,410	–	–
3rd "	–	17,231	–	–	–	2,907	–	–
4th "	–	17,891	–	–	–	3,290	–	–
<b>Year</b>	<b>–</b>	<b>63,795</b>	<b>–</b>	<b>–</b>	<b>–</b>	<b>12,801</b>	<b>–</b>	<b>–</b>
2000 <sup>1</sup> 1st Quarter	–	17,163	–	–	–	4,203	–	–
2nd "	–	18,985	–	–	–	3,914	–	–
3rd "	6,438	19,574	2,781	142.1	443	5,157	406	78.7
4th "	5,791	18,106	2,664	147.0	405	4,141	297	71.7
<b>Year</b>	<b>–</b>	<b>73,828</b>	<b>–</b>	<b>–</b>	<b>–</b>	<b>17,415</b>	<b>–</b>	<b>–</b>
2001 1st Quarter	5,891	16,492	2,427	147.2	435	6,066	475	78.3
2nd "	5,157	16,104	2,402	149.2	373	4,785	370	77.4
3rd "	5,741	14,452	2,223	153.8	411	3,561	283	79.4
4th "	5,220	13,618	1,997	146.6	361	3,368	262	77.9
<b>Year</b>	<b>22,009</b>	<b>60,666</b>	<b>9,049</b>	<b>149.2</b>	<b>1,580</b>	<b>17,780</b>	<b>1,390</b>	<b>78.2</b>
2002 1st Quarter	4,638	12,105	1,751	144.7	370	4,200	336	79.9
2nd "	4,192	15,236	2,103	138.1	350	5,163	391	75.7
3rd "	5,091	13,501	1,951	144.5	401	4,771	368	77.2
4th "	4,303	10,213	1,523	149.1	343	4,125	327	79.2
<b>Year</b>	<b>18,224</b>	<b>51,055</b>	<b>7,328</b>	<b>143.6</b>	<b>1,464</b>	<b>18,259</b>	<b>1,422</b>	<b>77.9</b>
2003 1st Quarter	4,469	9,511	1,464	153.9	370	4,030	325	80.6
2nd "	4,752	13,118	1,893	144.3	348	7,484	605	80.8
3rd "	5,132	14,394	2,035	141.4	439	10,065	789	78.4
4th "	4,970	12,582	1,905	151.4	435	7,170	562	78.3
<b>Year</b>	<b>19,323</b>	<b>49,605</b>	<b>7,297</b>	<b>147.1</b>	<b>1,592</b>	<b>28,749</b>	<b>2,281</b>	<b>79.3</b>
2004 1st Quarter	6,426	17,054	2,509	147.1	457	8,347	646	77.4
2nd "	7,123	18,653	2,770	148.5	425	7,313	543	74.2
3rd "	6,647	17,097	2,580	150.9	446	7,399	579	78.3
4th "	5,555	16,772	2,428	144.8	403	9,018	691	76.6
<b>Year</b>	<b>25,751</b>	<b>69,576</b>	<b>10,287</b>	<b>147.8</b>	<b>1,731</b>	<b>32,077</b>	<b>2,459</b>	<b>76.6</b>
2005 1st Quarter	5,749	18,913	2,810	148.6	416	6,437	487	75.7

<sup>1</sup> A review of the series for new dwellings was undertaken and resulted in revised data for 1999 and the first half of 2000. Corresponding revised data were not available for floor area or for permissions other than for new dwellings for those periods.

**Table 5 Details of Planning Permissions granted for new one-off houses, first quarter 2005, classified by region and county.**

Planning Region and County	Number of Permissions	Number of Units	Floor Area (000 sq.m)	Average Floor Area per Unit (sq.m)
<b>One-Off Houses</b>				
<b>Border, Midland and Western</b>	<b>2,653</b>	<b>2,653</b>	<b>565</b>	<b>213.1</b>
<b>Border</b>	<b>1,199</b>	<b>1,199</b>	<b>259</b>	<b>216.4</b>
Cavan	173	173	41	235.6
Donegal	409	409	85	206.9
Leitrim	233	233	45	192.0
Louth	101	101	25	246.9
Monaghan	121	121	31	256.3
Sligo	162	162	33	206.2
<b>Midland</b>	<b>478</b>	<b>478</b>	<b>102</b>	<b>213.6</b>
Laois	93	93	20	218.4
Longford	204	204	43	210.4
Offaly	106	106	22	205.2
Westmeath	75	75	17	228.0
<b>West</b>	<b>976</b>	<b>976</b>	<b>204</b>	<b>208.8</b>
Galway City	13	13	4	297.9
Galway <sup>2</sup>	455	455	96	211.3
Mayo	305	305	64	210.8
Roscommon	203	203	39	194.4
<b>Southern and Eastern</b>	<b>2,469</b>	<b>2,469</b>	<b>516</b>	<b>208.8</b>
<b>Dublin</b>	<b>205</b>	<b>205</b>	<b>30</b>	<b>147.3</b>
Dublin City	55	55	7	128.6
Dun Laoghaire-Rathdown	49	49	8	157.9
Fingal	63	63	10	164.6
South Dublin	38	38	5	132.0
<b>Mid-East</b>	<b>348</b>	<b>348</b>	<b>81</b>	<b>232.2</b>
Kildare	114	114	28	242.4
Meath	145	145	35	243.4
Wicklow	89	89	18	200.8
<b>Mid-West</b>	<b>497</b>	<b>497</b>	<b>106</b>	<b>213.9</b>
Clare	155	155	33	210.4
Limerick City	3	3	1	276.3
Limerick <sup>2</sup>	236	236	51	214.8
North Tipperary	103	103	22	215.4
<b>South-East</b>	<b>644</b>	<b>644</b>	<b>142</b>	<b>220.6</b>
Carlow	65	65	15	229.1
Kilkenny	125	125	29	232.3
South Tipperary	89	89	20	219.2
Waterford City	1	1	0	185.0
Waterford <sup>2</sup>	76	76	18	231.1
Wexford	288	288	61	211.4
<b>South-West</b>	<b>775</b>	<b>775</b>	<b>156</b>	<b>201.5</b>
Cork City	16	16	2	154.1
Cork <sup>2</sup>	466	466	94	202.3
Kerry	293	293	59	202.7
<b>State</b>	<b>5,122</b>	<b>5,122</b>	<b>1,081</b>	<b>211.0</b>

<sup>2</sup> Excluding cities

**Table 6 Details of Planning Permissions granted for new houses<sup>3</sup>, first quarter 2005, classified by region and county.**

Planning Region and County	Number of Permissions	Number of Units	Floor Area (000 sq.m)	Average Floor Area per Unit (sq.m)
<b>Houses<sup>3</sup></b>				
<b>Border, Midland and Western</b>	<b>315</b>	<b>6,228</b>	<b>785</b>	<b>126.0</b>
<b>Border</b>	<b>165</b>	<b>2,665</b>	<b>345</b>	<b>129.3</b>
Cavan	41	468	68	146.3
Donegal	54	1,041	128	123.0
Leitrim	15	167	26	154.8
Louth	17	502	62	123.0
Monaghan	20	289	37	127.6
Sligo	18	198	24	119.4
<b>Midland</b>	<b>61</b>	<b>1,894</b>	<b>232</b>	<b>122.4</b>
Laois	15	532	65	122.8
Longford	33	920	119	129.8
Offaly	6	220	24	107.8
Westmeath	7	222	23	105.3
<b>West</b>	<b>89</b>	<b>1,669</b>	<b>208</b>	<b>124.7</b>
Galway City	7	91	11	123.1
Galway <sup>2</sup>	21	471	61	129.9
Mayo	27	449	56	125.2
Roscommon	34	658	79	120.8
<b>Southern and Eastern</b>	<b>312</b>	<b>7,563</b>	<b>944</b>	<b>124.8</b>
<b>Dublin</b>	<b>50</b>	<b>706</b>	<b>89</b>	<b>125.7</b>
Dublin City	19	67	7	106.4
Dun Laoghaire-Rathdown	7	24	4	152.6
Fingal	14	420	57	135.3
South Dublin	10	195	21	108.5
<b>Mid-East</b>	<b>43</b>	<b>1,858</b>	<b>246</b>	<b>132.3</b>
Kildare	16	877	119	136.1
Meath	16	558	78	139.3
Wicklow	11	423	49	115.3
<b>Mid-West</b>	<b>48</b>	<b>1,015</b>	<b>120</b>	<b>118.1</b>
Clare	20	426	51	118.6
Limerick City	4	29	3	103.2
Limerick <sup>2</sup>	16	357	43	121.5
North Tipperary	8	203	23	113.1
<b>South-East</b>	<b>55</b>	<b>1,313</b>	<b>172</b>	<b>130.7</b>
Carlow	8	255	42	163.6
Kilkenny	11	392	51	130.4
South Tipperary	9	184	20	111.4
Waterford City	4	203	22	107.4
Waterford <sup>2</sup>	4	54	7	130.3
Wexford	19	225	29	131.0
<b>South-West</b>	<b>116</b>	<b>2,671</b>	<b>318</b>	<b>119.0</b>
Cork City	3	20	2	100.8
Cork <sup>2</sup>	63	2,152	246	114.5
Kerry	50	499	70	139.5
<b>State</b>	<b>627</b>	<b>13,791</b>	<b>1,729</b>	<b>125.4</b>

<sup>2</sup> Excluding cities

<sup>3</sup> Excluding one-off houses



**Table 7 Details of Planning Permissions granted for new apartments, first quarter 2005, classified by region and county.**

Planning Region and County	Number of Permissions	Number of Units	Floor Area (000 sq.m)	Average Floor Area per Unit (sq.m)
<b>Apartments</b>				
<b>Border, Midland and Western</b>	<b>149</b>	<b>1,721</b>	<b>139</b>	<b>81.0</b>
<b>Border</b>	<b>68</b>	<b>849</b>	<b>68</b>	<b>80.4</b>
Cavan	7	64	5	84.8
Donegal	23	207	17	80.6
Leitrim	8	45	4	85.9
Louth	12	148	10	68.5
Monaghan	8	206	17	80.3
Sligo	10	179	16	87.1
<b>Midland</b>	<b>27</b>	<b>164</b>	<b>12</b>	<b>75.0</b>
Laois	4	40	2	58.0
Longford	12	38	3	79.3
Offaly	5	32	3	78.8
Westmeath	6	54	4	82.4
<b>West</b>	<b>54</b>	<b>708</b>	<b>59</b>	<b>83.1</b>
Galway City	12	185	13	72.5
Galway <sup>2</sup>	17	119	10	81.3
Mayo	14	290	26	91.3
Roscommon	11	114	9	81.3
<b>Southern and Eastern</b>	<b>267</b>	<b>4,716</b>	<b>348</b>	<b>73.8</b>
<b>Dublin</b>	<b>94</b>	<b>2,651</b>	<b>188</b>	<b>70.8</b>
Dublin City	49	1,779	126	70.7
Dun Laoghaire-Rathdown	13	142	13	90.5
Fingal	16	395	26	66.0
South Dublin	16	335	23	68.7
<b>Mid-East</b>	<b>40</b>	<b>574</b>	<b>42</b>	<b>73.2</b>
Kildare	11	314	22	71.3
Meath	16	192	14	73.6
Wicklow	13	68	5	80.8
<b>Mid-West</b>	<b>32</b>	<b>362</b>	<b>29</b>	<b>81.1</b>
Clare	13	135	9	69.2
Limerick City	6	94	11	112.2
Limerick <sup>2</sup>	9	125	9	71.3
North Tipperary	4	8	1	71.2
<b>South-East</b>	<b>31</b>	<b>206</b>	<b>15</b>	<b>74.4</b>
Carlow	4	67	5	67.7
Kilkenny	11	111	9	78.7
South Tipperary	4	13	1	75.3
Waterford City	1	1	0	92.0
Waterford <sup>2</sup>	2	2	0	54.0
Wexford	9	12	1	73.1
<b>South-West</b>	<b>70</b>	<b>923</b>	<b>74</b>	<b>79.7</b>
Cork City	14	111	9	85.3
Cork <sup>2</sup>	42	703	56	79.3
Kerry	14	109	8	77.1
<b>State</b>	<b>416</b>	<b>6,437</b>	<b>487</b>	<b>75.7</b>

<sup>2</sup> Excluding cities

## Background Notes

<b>Scope and Background</b>	Details of the scope and background of this series were given in the March 1973 <i>Statistical Bulletin</i> . Works undertaken by a local authority outside its functional area come within the scope of the Local Government (Planning and Development) Acts, 1963 to 1993 and need planning permission. Planning permission is also needed for development by the State, except where the consultation procedures provided for in the Local Government (Planning and Development) Act, 1993 obtain (e.g. national security, public safety or order, the administration of justice etc.). This series only provides coverage where development is subject to the requirement to obtain planning permission.
<b>Regions</b>	The Local Government Act 1991 (Regional Authorities) (Establishment) Order, 1993, which came into operation on 1 January 1994, established eight new Regions. The CSO has adopted these in place of the old Planning Regions as the basis for the regional breakdown of planning permissions data.
<b>Classification</b>	Planning permissions are classified by type of development, local authority district and by regional authority. A distinction is made between residential and non-residential building and civil engineering.
<b>Coverage</b>	Only final grants of permission or approvals are covered, i.e. only works which involve construction. The following permissions are excluded since they do not entail construction per se: <ul style="list-style-type: none"><li>• Changes of a technical and business nature as distinct from a building or structural nature;</li><li>• Outline permission;</li><li>• Retention of an existing building;</li><li>• Changes to existing plan;</li><li>• Bye-law permission;</li><li>• Refusals - permissions subsequently granted on appeal by An Bord Pleanála are included.</li></ul>
<b>Rounding</b>	As the figures for floor area have been rounded there may be slight discrepancies between the sum of the constituent items and the totals shown.  Estimates are included where complete details of floor area size are not available.