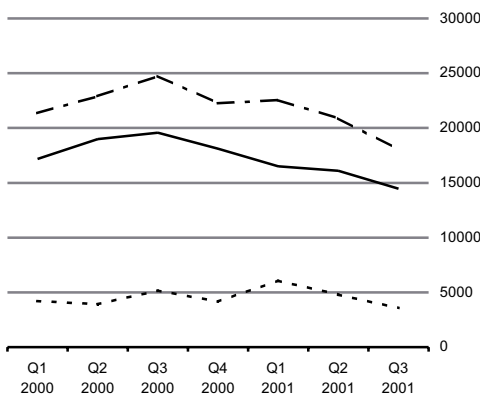
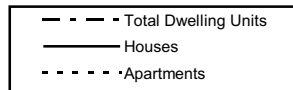




## Planning Permissions Third Quarter 2001

**Dwelling Units**



**Number of Dwelling Units**

	Houses	Apartments	Total
<b>Jul -Sep 2000</b>	19,574	5,157	24,731
<b>Jul -Sep 2001</b>	14,452	3,561	18,013

### Dwelling units approved down 27%

This release shows that for the third quarter of 2001, planning permission for 18,013 dwelling units was granted, compared with 24,731 units for the same period in 2000, a decrease of 27%.

The third quarter figures also show that:

- ◆ Planning permission was granted for 14,452 new houses. This compares with 19,574 new houses in the same quarter of 2000, a decrease of 26%. Planning permission was granted for 3,561 apartments in the third quarter 2001 and 5,157 in the third quarter of 2000. This is a decrease of 31%. *See Table 5.*
- ◆ The average floor area for houses was highest in the Western region at 162.2 square metres and lowest in the Dublin region at 138.1 square metres. The average floor area per unit for apartments was greatest in the Border region at 85.4 square metres, while the lowest was the Mid-west region at 57.8 square metres. *See table 5.*
- ◆ Total floor area planned was 3,964 thousand sq. metres. Of this, 63.4% was for new dwellings (6,157 permissions), 25.2% for other new construction (1,671 permissions) and 11.4% for extensions (3,715 permissions). *See Table 1.*

Published by the Central Statistics Office, Ireland.

Ardee Road  
Dublin 6  
Ireland

Skehard Road  
Cork  
Ireland

LoCall: 1890 313 414

Tel: +353-1 498 4000  
Fax: +353-1 498 4229

Tel: +353-21 453 5000  
Fax: +353-21 453 5555

Both offices may be contacted through any of these telephone numbers.

CSO on the Web: <http://www.cso.ie>

Director General: Donal Garvey

Enquiries:

Building Statistics    Building Section, ext 5529  
Queries and Sales    Information Section, ext 5032  
   information@cso.ie

© Central Statistics Office  
The contents of this release may be quoted provided the source is given clearly and accurately. Reproduction for own or internal use is permitted.

For more information, contact Sandra Tobin at 1890 313 414 ext 5307 or Iris McCarthy or Eily Fitzpatrick at 1890 313 414 ext 5529

**Table 1 Summary of Planning Permissions Granted, 1995-2001**

Period	Number of Permissions					Total Floor Area (000 m <sup>2</sup> ) <sup>1</sup>			
	New Construction		Extension	Alteration and Conversion	Total	New Construction		Extension	Total <sup>2</sup>
	Dwellings	Other				Dwellings	Other <sup>2</sup>		
1995 1st Quarter	2,424	1,288	1,982	654	6,348	943	331	234	1,508
2nd "	2,464	1,552	2,473	782	7,271	830	530	249	1,609
3rd "	2,898	1,753	2,830	891	8,372	925	576	331	1,833
4th "	2,512	1,268	2,132	656	6,568	675	484	255	1,415
<b>Year</b>	<b>10,298</b>	<b>5,861</b>	<b>9,417</b>	<b>2,983</b>	<b>28,559</b>	<b>3,373</b>	<b>1,921</b>	<b>1,069</b>	<b>6,365</b>
1996 1st Quarter	2,775	1,304	2,175	645	6,899	1,031	441	279	1,751
2nd "	3,028	1,325	2,788	709	7,850	959	838	278	2,075
3rd "	3,313	1,528	3,174	792	8,807	1,146	666	342	2,155
4th "	2,900	1,144	2,285	653	6,982	1,031	473	212	1,717
<b>Year</b>	<b>12,016</b>	<b>5,301</b>	<b>10,422</b>	<b>2,799</b>	<b>30,538</b>	<b>4,167</b>	<b>2,418</b>	<b>1,111</b>	<b>7,698</b>
1997 1st Quarter	2,991	1,107	2,231	613	6,942	1,077	492	319	1,888
2nd "	3,393	1,294	2,817	676	8,180	1,304	671	301	2,276
3rd "	3,818	1,334	3,348	735	9,235	1,134	447	384	1,965
4th "	3,527	1,333	2,754	662	8,276	1,144	516	364	2,024
<b>Year</b>	<b>13,729</b>	<b>5,068</b>	<b>11,150</b>	<b>2,686</b>	<b>32,633</b>	<b>4,659</b>	<b>2,126</b>	<b>1,368</b>	<b>8,153</b>
1998 1st Quarter	3,513	1,216	2,491	602	7,822	1,403	618	333	2,354
2nd "	3,854	1,182	3,087	671	8,794	1,383	521	388	2,292
3rd "	5,027	1,486	4,060	763	11,336	1,897	804	496	3,198
4th "	4,325	1,296	2,938	712	9,271	1,415	605	357	2,377
<b>Year</b>	<b>16,719</b>	<b>5,180</b>	<b>12,576</b>	<b>2,748</b>	<b>37,223</b>	<b>6,098</b>	<b>2,548</b>	<b>1,574</b>	<b>10,221</b>
1999 <sup>3</sup> 1st Quarter	5,201	-	-	-	-	-	-	-	-
2nd "	5,674	-	-	-	-	-	-	-	-
3rd "	6,517	-	-	-	-	-	-	-	-
4th "	6,203	-	-	-	-	-	-	-	-
<b>Year</b>	<b>23,595</b>	-	-	-	-	-	-	-	-
2000 <sup>3</sup> 1st Quarter	6,630	-	-	-	-	-	-	-	-
2nd "	6,597	-	-	-	-	-	-	-	-
3rd "	6,893	1,449	4,206	762	13,310	3,223	1,159	525	4,906
4th "	6,212	1,354	3,087	612	11,265	3,019	865	417	4,301
<b>Year</b>	<b>26,332</b>	-	-	-	-	-	-	-	-
2001 1st Quarter	6,333	1,455	2,986	674	11,448	2,909	1,084	510	4,503
2nd "	5,538	1,465	3,030	639	10,672	2,779	921	368	4,067
3rd "	6,157	1,671	3,715	786	12,329	2,513	998	453	3,964

<sup>1</sup> Partly estimated.<sup>2</sup> For categories where floor area is a relevant measure<sup>3</sup> A review of the series for new dwellings was undertaken and resulted in revised data for 1999 and the first half of 2000. Corresponding revised data were not available for floor area or for permissions other than for new dwellings for those periods.

**Table 2 Summary of Planning Permissions granted, third quarter 2001, classified by region, county and type of development.**

Planning Region and County	Number of Permissions				Total Floor Area (000 m <sup>2</sup> ) <sup>1</sup>				
	New Construction		Extension	Alteration and Conversion	Total	New Construction		Extension	Total <sup>2</sup>
	Dwellings	Other				Dwellings	Other <sup>2</sup>		
<b>Border, Midland and Western</b>	<b>2,742</b>	<b>533</b>	<b>1,060</b>	<b>218</b>	<b>4,553</b>	<b>1,066</b>	<b>263</b>	<b>108</b>	<b>1,437</b>
<b>Border</b>	<b>1,210</b>	<b>220</b>	<b>476</b>	<b>92</b>	<b>1,998</b>	<b>467</b>	<b>122</b>	<b>47</b>	<b>637</b>
Cavan	221	29	69	11	330	68	13	6	87
Donegal	518	80	140	24	762	224	45	17	286
Leitrim	95	12	33	4	144	34	3	3	40
Louth	149	44	112	34	339	71	24	7	102
Monaghan	111	30	25	4	197	36	14	6	56
Sligo	116	25	70	15	226	35	22	9	66
<b>Midland</b>	<b>429</b>	<b>126</b>	<b>219</b>	<b>43</b>	<b>817</b>	<b>204</b>	<b>42</b>	<b>25</b>	<b>271</b>
Laois	60	26	38	10	134	64	8	4	76
Longford	99	21	42	5	167	51	10	4	65
Offaly	115	27	69	9	220	51	5	8	63
Westmeath	155	52	70	19	296	38	20	9	67
<b>West</b>	<b>1,103</b>	<b>187</b>	<b>365</b>	<b>83</b>	<b>1,738</b>	<b>395</b>	<b>98</b>	<b>36</b>	<b>529</b>
Galway Co. Borough	40	21	38	5	104	26	48	5	78
Galway <sup>3</sup>	570	75	168	47	860	228	20	14	263
Mayo	308	54	113	27	502	94	8	10	112
Roscommon	185	37	46	4	272	48	23	6	77
<b>Southern and Eastern</b>	<b>3,415</b>	<b>1,138</b>	<b>2,655</b>	<b>568</b>	<b>7,776</b>	<b>1,446</b>	<b>735</b>	<b>345</b>	<b>2,526</b>
<b>Dublin</b>	<b>353</b>	<b>262</b>	<b>867</b>	<b>232</b>	<b>1,714</b>	<b>398</b>	<b>324</b>	<b>148</b>	<b>869</b>
Dublin Co. Borough	139	120	336	124	719	50	120	89	259
Dun Laoghaire - Rathdown	62	43	200	64	369	56	39	11	106
Fingal	98	61	193	18	370	265	77	23	366
South Dublin	54	38	138	26	256	27	87	24	138
<b>Mid-East</b>	<b>573</b>	<b>173</b>	<b>369</b>	<b>66</b>	<b>1,181</b>	<b>228</b>	<b>103</b>	<b>31</b>	<b>363</b>
Kildare	215	65	122	22	424	89	50	12	151
Meath	248	67	142	28	485	114	31	11	156
Wicklow	110	41	105	16	272	25	22	8	55
<b>Mid-West</b>	<b>657</b>	<b>176</b>	<b>370</b>	<b>78</b>	<b>1,281</b>	<b>180</b>	<b>94</b>	<b>41</b>	<b>316</b>
Clare	266	55	122	37	480	67	13	10	90
Limerick Co. Borough	14	16	35	19	84	12	1	2	15
Limerick <sup>3</sup>	254	79	147	15	495	77	62	21	160
Tipperary N.R.	123	26	66	7	222	24	19	8	51
<b>South-East</b>	<b>807</b>	<b>243</b>	<b>452</b>	<b>87</b>	<b>1,589</b>	<b>276</b>	<b>117</b>	<b>62</b>	<b>455</b>
Carlow	90	36	61	6	193	40	13	11	63
Kilkenny	165	66	92	16	339	55	26	11	92
Tipperary S.R.	141	52	73	19	285	38	24	16	79
Waterford Co. Borough	9	12	22	10	53	33	22	5	59
Waterford <sup>3</sup>	122	18	90	9	239	39	6	6	51
Wexford	280	59	114	27	480	72	26	14	111
<b>South-West</b>	<b>1,025</b>	<b>284</b>	<b>597</b>	<b>105</b>	<b>2,011</b>	<b>364</b>	<b>96</b>	<b>63</b>	<b>524</b>
Cork Co. Borough	40	37	81	25	183	32	7	6	46
Cork <sup>3</sup>	610	182	391	54	1,237	223	67	32	322
Kerry	375	65	125	26	591	109	21	25	156
<b>State</b>	<b>6,157</b>	<b>1,671</b>	<b>3,715</b>	<b>786</b>	<b>12,329</b>	<b>2,513</b>	<b>998</b>	<b>453</b>	<b>3,964</b>

<sup>1</sup> Partly estimated

<sup>2</sup> For categories where floor area is a relevant measure

<sup>3</sup> Excluding boroughs

**Table 3A Number of Planning Permissions granted, third quarter 2001, classified by region, type of development and functional category.**

Type of Development and Planning Region	Functional Category								Total
	Dwellings	Commercial Buildings	Buildings for Agriculture	Industrial Buildings	Govt., Health and Education	Other Buildings for Social Use	Civil Eng.	Other	
<b><i>New Construction</i></b>									
<b>Border, Midland and Western</b>	<b>2,742</b>	<b>118</b>	<b>94</b>	<b>45</b>	<b>30</b>	<b>19</b>	<b>87</b>	<b>140</b>	<b>3,275</b>
Border	1,210	58	38	22	10	10	33	49	1,430
Midland	429	27	20	11	7	4	18	39	555
West	1,103	33	36	12	13	5	36	52	1,290
<b>Southern and Eastern</b>	<b>3,415</b>	<b>245</b>	<b>235</b>	<b>48</b>	<b>65</b>	<b>34</b>	<b>167</b>	<b>344</b>	<b>4,553</b>
Dublin	353	82	9	7	16	8	59	81	615
Mid-East	573	35	33	9	12	8	14	62	746
Mid-West	657	36	50	8	8	1	27	46	833
South-East	807	27	93	9	17	4	26	67	1,050
South-West	1,025	65	50	15	12	13	41	88	1,309
<b>State</b>	<b>6,157</b>	<b>363</b>	<b>329</b>	<b>93</b>	<b>95</b>	<b>53</b>	<b>254</b>	<b>484</b>	<b>7,828</b>
<b><i>Extension</i></b>									
<b>Border, Midland and Western</b>	<b>845</b>	<b>79</b>	<b>15</b>	<b>22</b>	<b>81</b>	<b>18</b>	<b>-</b>	<b>-</b>	<b>1,060</b>
Border	384	37	4	9	37	5	-	-	476
Midland	173	14	2	5	18	7	-	-	219
West	288	28	9	8	26	6	-	-	365
<b>Southern and Eastern</b>	<b>2,176</b>	<b>198</b>	<b>44</b>	<b>32</b>	<b>155</b>	<b>50</b>	<b>-</b>	<b>-</b>	<b>2,655</b>
Dublin	726	67	5	11	45	13	-	-	867
Mid-East	318	18	1	2	22	8	-	-	369
Mid-West	278	31	10	9	33	9	-	-	370
South-East	365	42	13	1	24	7	-	-	452
South-West	489	40	15	9	31	13	-	-	597
<b>State</b>	<b>3,021</b>	<b>277</b>	<b>59</b>	<b>54</b>	<b>236</b>	<b>68</b>	<b>-</b>	<b>-</b>	<b>3,715</b>
<b><i>Alteration and Conversion</i></b>									
<b>Border, Midland and Western</b>	<b>90</b>	<b>85</b>	<b>3</b>	<b>12</b>	<b>20</b>	<b>8</b>	<b>-</b>	<b>-</b>	<b>218</b>
Border	37	39	2	3	7	4	-	-	92
Midland	12	23	-	3	3	2	-	-	43
West	41	23	1	6	10	2	-	-	83
<b>Southern and Eastern</b>	<b>270</b>	<b>206</b>	<b>10</b>	<b>15</b>	<b>50</b>	<b>17</b>	<b>-</b>	<b>-</b>	<b>568</b>
Dublin	122	85	-	5	15	5	-	-	232
Mid-East	28	22	1	3	10	2	-	-	66
Mid-West	48	15	1	2	10	2	-	-	78
South-East	33	37	5	2	7	3	-	-	87
South-West	39	47	3	3	8	5	-	-	105
<b>State</b>	<b>360</b>	<b>291</b>	<b>13</b>	<b>27</b>	<b>70</b>	<b>25</b>	<b>-</b>	<b>-</b>	<b>786</b>
<b><i>All Developments</i></b>									
<b>Border, Midland and Western</b>	<b>3,677</b>	<b>282</b>	<b>112</b>	<b>79</b>	<b>131</b>	<b>45</b>	<b>87</b>	<b>140</b>	<b>4,553</b>
Border	1,631	134	44	34	54	19	33	49	1,998
Midland	614	64	22	19	28	13	18	39	817
West	1,432	84	46	26	49	13	36	52	1,738
<b>Southern and Eastern</b>	<b>5,861</b>	<b>649</b>	<b>289</b>	<b>95</b>	<b>270</b>	<b>101</b>	<b>167</b>	<b>344</b>	<b>7,776</b>
Dublin	1,201	234	14	23	76	26	59	81	1,714
Mid-East	919	75	35	14	44	18	14	62	1,181
Mid-West	983	82	61	19	51	12	27	46	1,281
South-East	1,205	106	111	12	48	14	26	67	1,589
South-West	1,553	152	68	27	51	31	41	88	2,011
<b>State</b>	<b>9,538</b>	<b>931</b>	<b>401</b>	<b>174</b>	<b>401</b>	<b>146</b>	<b>254</b>	<b>484</b>	<b>12,329</b>

- No permissions

**Table 3B Total Floor Area planned (000 m<sup>2</sup>)<sup>1</sup> in new construction and extensions, third quarter 2001, classified by region and functional category.**

Type of Development and Planning Region	Functional Category						Total <sup>2</sup>
	Dwellings	Commercial Buildings	Buildings for Agriculture	Industrial Buildings	Govt., Health and Education	Other Buildings for Social Use	
<b><i>New Construction</i></b>							
<b>Border, Midland and Western</b>	<b>1,066</b>	<b>127</b>	<b>39</b>	<b>46</b>	<b>37</b>	<b>13</b>	<b>1,329</b>
Border	467	57	18	24	12	10	589
Midland	204	17	10	11	3	1	246
West	395	53	11	11	21	2	493
<b>Southern and Eastern</b>	<b>1,446</b>	<b>431</b>	<b>117</b>	<b>102</b>	<b>56</b>	<b>28</b>	<b>2,181</b>
Dublin	398	274	9	3	24	13	721
Mid-East	228	48	16	27	6	7	332
Mid-West	180	43	18	31	3	0	275
South-East	276	19	55	28	14	1	393
South-West	364	47	19	13	10	7	461
<b>State</b>	<b>2,513</b>	<b>558</b>	<b>156</b>	<b>149</b>	<b>93</b>	<b>42</b>	<b>3,511</b>
<b><i>Extension</i></b>							
<b>Border, Midland and Western</b>	<b>53</b>	<b>18</b>	<b>6</b>	<b>8</b>	<b>20</b>	<b>2</b>	<b>108</b>
Border	23	9	2	3	10	1	47
Midland	13	3	1	3	4	1	25
West	17	6	3	3	6	1	36
<b>Southern and Eastern</b>	<b>127</b>	<b>107</b>	<b>14</b>	<b>35</b>	<b>49</b>	<b>13</b>	<b>345</b>
Dublin	39	54	3	20	29	3	148
Mid-East	19	4	0	0	5	2	31
Mid-West	17	6	3	9	5	2	41
South-East	22	28	3	1	6	2	62
South-West	30	16	4	5	4	3	63
<b>State</b>	<b>180</b>	<b>125</b>	<b>20</b>	<b>43</b>	<b>69</b>	<b>15</b>	<b>453</b>
<b><i>Total New Construction and Extension</i></b>							
<b>Border, Midland and Western</b>	<b>1,119</b>	<b>145</b>	<b>45</b>	<b>55</b>	<b>56</b>	<b>15</b>	<b>1,437</b>
Border	490	66	21	27	22	11	637
Midland	217	20	11	13	7	2	271
West	412	59	14	14	27	3	529
<b>Southern and Eastern</b>	<b>1,573</b>	<b>538</b>	<b>131</b>	<b>137</b>	<b>105</b>	<b>42</b>	<b>2,526</b>
Dublin	436	328	12	23	53	17	869
Mid-East	248	51	16	27	11	9	363
Mid-West	197	48	21	40	8	2	316
South-East	298	47	58	29	20	3	455
South-West	394	63	23	18	14	10	524
<b>State</b>	<b>2,693</b>	<b>684</b>	<b>177</b>	<b>192</b>	<b>162</b>	<b>57</b>	<b>3,964</b>

<sup>1</sup> Partly estimated

<sup>2</sup> For categories where floor area is a relevant measure

- No permissions.

Note: 0 implies less than 500m<sup>2</sup>.

**Table 4 Summary of Planning Permissions Granted for new houses and apartments, 1995-2001**

Period	Houses				Apartments			
	Number of Permissions	Number of Units	Floor Area (000 m <sup>2</sup> )	Average Floor Area per Unit (m <sup>2</sup> )	Number of Permissions	Number of Units	Floor Area (000 m <sup>2</sup> )	Average Floor Area per Unit (m <sup>2</sup> )
1995 1st Quarter	2,276	6,679	840	125.8	139	1,522	96	62.8
2nd "	2,308	5,647	721	127.8	151	1,765	107	60.8
3rd "	2,732	6,396	838	131.0	158	1,219	83	68.4
4th "	2,361	4,350	582	133.7	146	1,259	88	69.5
<b>Year</b>	<b>9,677</b>	<b>23,072</b>	<b>2,981</b>	<b>129.2</b>	<b>594</b>	<b>5,765</b>	<b>374</b>	<b>64.8</b>
1996 1st Quarter	2,601	7,610	912	119.8	165	1,614	112	69.4
2nd "	2,861	6,640	857	129.1	166	1,421	99	69.6
3rd "	3,151	8,294	1,090	131.4	158	853	54	63.2
4th "	2,745	6,966	912	130.9	148	1,466	103	70.3
<b>Year</b>	<b>11,358</b>	<b>29,510</b>	<b>3,771</b>	<b>127.8</b>	<b>637</b>	<b>5,354</b>	<b>368</b>	<b>68.7</b>
1997 1st Quarter	2,794	6,962	923	132.6	195	2,041	153	74.8
2nd "	3,178	8,821	1,161	131.6	204	1,929	135	70.2
3rd "	3,608	6,975	1,014	145.5	208	1,728	120	69.2
4th "	3,342	7,004	1,029	147.0	183	1,600	113	70.9
<b>Year</b>	<b>12,922</b>	<b>29,762</b>	<b>4,127</b>	<b>138.7</b>	<b>790</b>	<b>7,298</b>	<b>521</b>	<b>71.4</b>
1998 1st Quarter	3,304	9,280	1,286	138.5	206	1,600	115	71.6
2nd "	3,632	9,170	1,251	136.4	218	1,980	128	64.7
3rd "	4,792	12,232	1,754	143.4	234	2,035	143	70.5
4th "	4,119	9,276	1,283	138.3	204	1,816	130	71.8
<b>Year</b>	<b>15,847</b>	<b>39,958</b>	<b>5,574</b>	<b>139.5</b>	<b>862</b>	<b>7,431</b>	<b>516</b>	<b>69.5</b>
1999 <sup>1</sup> 1st Quarter	–	14,370	–	–	–	3,194	–	–
2nd "	–	14,303	–	–	–	3,410	–	–
3rd "	–	17,231	–	–	–	2,907	–	–
4th "	–	17,891	–	–	–	3,290	–	–
<b>Year</b>	<b>–</b>	<b>63,795</b>	<b>–</b>	<b>–</b>	<b>–</b>	<b>12,801</b>	<b>–</b>	<b>–</b>
2000 <sup>1</sup> 1st Quarter	–	17,163	–	–	–	4,203	–	–
2nd "	–	18,985	–	–	–	3,914	–	–
3rd "	6,438	19,574	2,781	142.1	443	5,157	406	78.7
4th "	5,791	18,106	2,664	147.0	405	4,141	297	71.7
<b>Year</b>	<b>12,229</b>	<b>73,828</b>	<b>5,445</b>	<b>73.7</b>	<b>848</b>	<b>17,415</b>	<b>703</b>	<b>40.4</b>
2001 1st Quarter	5,891	16,492	2,427	147.2	435	6,066	475	78.3
2nd "	5,157	16,104	2,402	149.2	373	4,785	370	77.4
3rd "	5,741	14,452	2,223	153.8	411	3,561	283	79.4

<sup>1</sup> A review of the series for new dwellings was undertaken and resulted in revised data for 1999 and the first half of 2000. Corresponding revised data were not available for floor area or for permissions other than for new dwellings for those periods.

**Table 5 Details of Planning Permissions granted for new houses and apartments during the third quarter 2001, classified by region.**

Planning Region	Number of Permissions	Number of Units	Floor Area (000 m <sup>2</sup> )	Average Floor Area per Unit (m <sup>2</sup> )
<b>Houses</b>				
<b>Border, Midland and Western</b>	<b>2,633</b>	<b>6,436</b>	<b>1,012</b>	<b>157.2</b>
Border	1,156	2,771	435	157.0
Midland	412	1,306	194	148.5
West	1,065	2,359	383	162.2
<b>Southern and Eastern</b>	<b>3,108</b>	<b>8,016</b>	<b>1,211</b>	<b>151.1</b>
Dublin	242	1,846	255	138.1
Mid-East	515	1,283	195	152.1
Mid-West	628	1,084	174	160.5
South-East	771	1,718	259	150.9
South-West	952	2,085	328	157.2
<b>State</b>	<b>5,741</b>	<b>14,452</b>	<b>2,223</b>	<b>153.8</b>
<b>Apartments</b>				
<b>Border, Midland and Western</b>	<b>108</b>	<b>663</b>	<b>54</b>	<b>81.1</b>
Border	53	365	31	85.4
Midland	17	131	10	77.7
West	38	167	12	74.4
<b>Southern and Eastern</b>	<b>303</b>	<b>2,898</b>	<b>229</b>	<b>79.0</b>
Dublin	110	1,720	138	80.2
Mid-East	58	410	33	81.0
Mid-West	28	103	6	57.8
South-East	35	219	17	75.4
South-West	72	446	36	79.7
<b>State</b>	<b>411</b>	<b>3,561</b>	<b>283</b>	<b>79.4</b>

## Background Notes

<b>Scope and Background</b>	Details of the scope and background of this series were given in the March 1973 <i>Statistical Bulletin</i> . Works undertaken by a local authority outside its functional area come within the scope of the Local Government (Planning and Development) Acts, 1963 to 1993 and need planning permission. Planning permission is also needed for development by the State, except where the consultation procedures provided for in the Local Government (Planning and Development) Act, 1993 obtain (e.g. national security, public safety or order, the administration of justice etc.). This series only provides coverage where development is subject to the requirement to obtain planning permission.
<b>Regions</b>	The Local Government Act 1991 (Regional Authorities) (Establishment) Order, 1993, which came into operation on 1 January 1994, established eight new Regions. The CSO has adopted these in place of the old Planning Regions as the basis for the regional breakdown of planning permissions data.
<b>Classification</b>	Planning permissions are classified by type of development, local authority district and by regional authority. A distinction is made between residential and non-residential building and civil engineering.
<b>Coverage</b>	Only final grants of permission or approvals are covered, i.e. only works which involve construction. The following permissions are excluded since they do not entail construction per se: <ul style="list-style-type: none"><li>• Changes of a technical and business nature as distinct from a building or structural nature;</li><li>• Outline permission;</li><li>• Retention of an existing building;</li><li>• Changes to existing plan;</li><li>• Bye-law permission;</li><li>• Refusals - permissions subsequently granted on appeal by An Bord Pleanála are included.</li></ul>
<b>Rounding</b>	As the figures for floor area have been rounded there may be slight discrepancies between the sum of the constituent items and the totals shown.