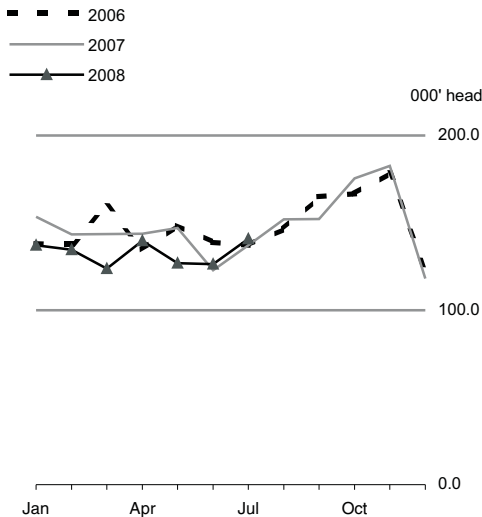




Livestock Slaughtering July 2008

Cattle Slaughtering



	Cattle	Sheep	Pigs
	'000 head		
July 2007	137.1	301.2	216.4
July 2008	140.7	270.0	224.4
% change	2.6%	-10.4%	3.7%
Jan-July 2008/2007	-6.3%	-7.7%	-0.6%

Cattle slaughtering up 2.6% in July

The number of cattle slaughtered in July 2008 was 2.6 % higher than in July 2007. See Table 1 and graph.

A comparison of July 2008 and 2007 figures shows that (see Table 1):

- ◆ Sheep slaughtering decreased by 10.4%.
- ◆ Pig slaughtering increased by 3.7%.

The number of cattle slaughtering in January-July 2008 was 6.3% lower than the corresponding 2007 figure. Over the same period there was a decrease of 7.7% in sheep slaughtering and a decrease of 0.6% in pig slaughtering.

Between the periods January to May 2007 and 2008, Greece, Spain, France, and Ireland recorded decreases in sheep slaughtering of 1.5%, 25.6%, 5.1% and 6.7% respectively. United Kingdom recorded an increase of 5.3%. See Page 4.

For more information contact Hilda McCarthy at 021 453 5084 or Mary Malone at 021 453 5338.

Published by the Central Statistics Office, Ireland.

Ardee Road
Dublin 6
Ireland

Skehard Road
Cork
Ireland

LoCall: 1890 313 414 (ROI)
0870 8760256 (UK/NI)

Tel: +353 1 498 4000
Fax: +353 1 498 4229

Tel: +353 21 453 5000
Fax: +353 21 453 5555

Both offices may be contacted through any of these telephone numbers.

CSO on the Web: www.cso.ie

and go to
Business Sectors: Agriculture and Fishing

Director General: Gerard O'Hanlon

Enquiries:

Statistics	Agriculture Section, ext 5338 agri@cso.ie
Sales	Information Section, ext 5021 information@cso.ie

© Central Statistics Office
The contents of this release may be quoted provided the source is given clearly and accurately. Reproduction for own or internal use is permitted.

Table 1 Livestock Slaughtering

Category	Year	Unit	Jan	Feb	Mar	Apr	May	Jun	Jul	Aug	Sep	Oct	Nov	Dec	Total
Cattle	2006	'000	138.0	137.7	159.5	134.7	148.4	138.7	137.1	146.5	165.0	166.6	178.6	122.8	1773.6
	2007		153.5	143.3	143.5	143.8	147.0	122.8	137.1	151.9	152.1	175.4	182.6	118.1	1771.1
	2008		137.1	134.5	123.7	139.7	126.8	126.3	140.7						
Sheep	2006	'000	250.6	202.6	229.8	244.4	311.8	330.0	324.2	373.3	344.2	327.0	284.0	266.0	3487.9
	2007		217.2	168.6	196.9	230.5	294.5	273.6	301.2	392.1	342.1	362.7	252.5	231.8	3263.7
	2008		212.4	175.7	189.5	211.2	244.6	248.8*	270.0						
Pigs	2006	'000	229.9	205.6	217.2	210.6	235.8	223.2	221.4	235.3	223.0	220.4	236.2	199.4	2658.0
	2007		235.5	222.4	226.6	210.6	230.7	205.4	216.4	219.7	209.9	221.0	232.4	184.3	2614.9
	2008		233.4	226.0	207.6	226.8	214.6	206.0*	224.4						
Cattle	2006	'000	44.5	44.4	51.5	43.4	48.1	45.1	44.4	47.3	53.7	53.9	56.8	39.2	572.3
	2007	tonnes ¹	50.1	46.9	46.6	47.2	48.8	40.7	45.0	49.8	50.5	57.5	59.6	38.1	580.8
	2008		45.3	44.0	40.3	45.2	41.3	40.9	45.1						
Sheep	2006	'000	5.1	4.1	4.7	5.0	6.2	6.5	6.5	7.5	7.0	6.6	5.8	5.3	70.3
	2007	tonnes ¹	4.4	3.4	4.0	4.7	5.9	5.5	6.1	7.9	6.9	7.3	5.1	4.6	65.9
	2008		4.3	3.5	3.8	4.3	4.9	5.0	5.4						
Pigs	2006	'000	18.3	16.2	17.2	16.5	18.5	17.5	17.2	18.3	17.5	17.4	18.8	15.6	209.0
	2007	tonnes ¹	18.7	17.9	18.2	16.8	18.3	16.1	16.8	16.9	16.2	17.1	18.2	14.1	205.6
	2008		19.0	18.1	16.3	17.8	16.7*	16.0*	17.5						

¹Carcass weight

*Revised

Background Notes

- Introduction** This release gives details on the number and carcass weight of cattle, sheep and pig slaughterings. These figures include slaughterings at both licensed meat export and Local Authority licensed premises. Estimates for the on-farm kill of sheep and pigs have also been incorporated. The collection of monthly slaughtering data for pigs, cattle and sheep is governed by Council directives 93/23 (articles 10 & 11), 93/24 (articles 10 & 11) and 93/25 (articles 13 & 14). The definition of the carcass weight for these animals is defined in annex III of 94/432/EC and annex IV of 94/434/EC.
- Export** Information on the number of slaughterings in meat export premises for cattle, sheep and pigs is received from the Department of Agriculture, Fisheries and Food on a monthly basis. Average carcass weights of cattle are taken from the Department's Beef Carcass Classification Scheme. Average weights of pigs are based on information obtained directly from the export factories by the CSO. Average weights of sheep are derived following consultation with industry experts.
- Local Authorities** The CSO conducts a monthly survey of all Local Authorities in the State. All slaughterings in premises over which inspection controls are exercised are included.
- The CSO estimates the carcass weight of cattle, sheep and pigs slaughtered under Local Authority control. These estimates are reviewed on a regular basis with butchers and abattoirs.
- Calves** Calves are included with cattle.
- Carcass weight** For cattle, the carcass weight is defined as the weight of the slaughtered animal's cold body after being skinned, bled and eviscerated and after removal of external genitalia, the limb at the carpus and tarsus, head, tail, kidneys and kidney fats and the udder.
- For sheep, the carcass weight is defined as the weight of the slaughtered animal's cold body after being skinned, bled and eviscerated and after removal of the head, feet, tail and genital organs including the udder. Kidneys and kidney fats are included in the carcass.
- For pigs, the carcass weight is defined as the weight of the slaughtered animal's cold body either whole or divided in half along the mid-line, after being bled and eviscerated and after the removal of the tongue, bristles, hooves, genitalia, flare fat, kidneys and diaphragm.

Sheep Slaughterings

'000 head

Country	Jan-May 2007	Jan-May 2008	% change
European Union	31,105	:	:
Austria	137	154	12.4%
Belgium	24	24	-2.8%
Bulgaria	493	446	-9.5%
Cyprus	56	63	12.5%
Czech Republic	30	33	10.3%
Denmark	28	29	2.5%
Estonia	8	9	13.3%
Finland	14	15	3.0%
France	2,734	2,596	-5.1%
Germany	820	731	-10.9%
Greece	4,010	3,949	-1.5%
Hungary	27	15	-43.7%
Ireland	1,108	1,033	-6.7%
Italy	2,577	2,256	-12.5%
Latvia	5	12	131.6%
Lithuania	11	11	0.9%
Luxembourg	1	1	-20.9%
Malta	0	0	-75.0%
Netherlands	340	:	:
Romania	3,861	3,793	-1.8%
Poland	33	34	2.9%
Portugal	483	505	4.4%
Slovak Republic	79	89	13.5%
Slovenia	4	4	-1.1%
Spain	8,119	6,041	-25.6%
Sweden	74	72	-2.0%
United Kingdom	6,029	6,347	5.3%

Source: Eurostat website <http://epp.eurostat.ec.europa.eu> and national data

: Data not available.