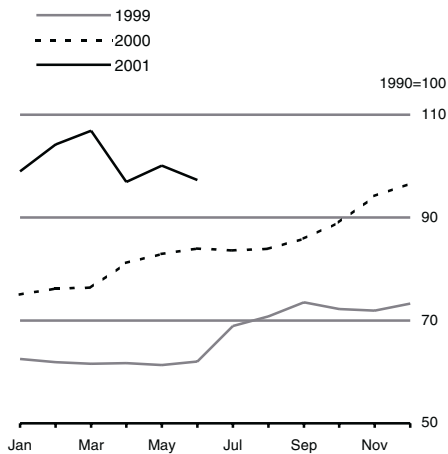




Agricultural Price Indices June 2001

Pig price index

Seasonally adjusted



Seasonally adjusted

	Output	Input	Terms of trade
	1990 = 100		
May 2001	100.4	114.7	87.5
Jun 2001	100.9	114.9	87.8
% change	0.5%	0.2%	0.3%

Pig prices down 2.8% in June

The seasonally adjusted pig price index was 97.3 in June 2001, 2.8% lower than in May 2001. *See Table 3 and graph.*

There was an increase of 0.5% in the seasonally adjusted output price index. Prime cattle, store cattle, poultry and milk increased while cows for slaughter, sheep, pigs and potatoes decreased. The seasonally adjusted input price index increased by 0.2%. Thus the terms of trade increased by 0.3% indicating a favourable price movement for farmers in the month.

Comparing June 2001 unadjusted agricultural price indices with the corresponding June 2000 indices shows that (*see Tables 1 and 2*):

- ◆ Feeding stuffs were up 3.7%, fertilizers were up 9.9% and energy prices were up 4.2%.
- ◆ Sheep, pigs, potatoes and milk were up 48.4%, 15.7%, 130.7% and 6.5% respectively while cattle and cereals were down 11.0% and 3.3% respectively.

EU output and input price indices for selected items are shown at the back of this release. The figures show that EU energy prices were up 24.5% in the fourth quarter of 2000.

For further information contact Ray Devine at 021-4535331 or Mary Murphy at 021-4535315.

Published by the Central Statistics Office, Ireland.

Ardee Road
Dublin 6
Ireland

Skehard Road
Cork
Ireland

LoCall: 1890 313 414

Tel: +353-1 498 4000
Fax: +353-1 498 4299

Tel: +353-21 453 5000
Fax: +353-21 453 5555

Both offices may be contacted through any of these telephone numbers.

CSO on the Web: <http://www.cso.ie>

Director General: Donal Garvey

Enquiries:

Statistics	Agriculture Section, ext 5315 agri@cso.ie
Sales	Information Section, ext 5032 information@cso.ie

© Central Statistics Office

The contents of this release may be quoted provided the source is given clearly and accurately. Reproduction for own or internal use is permitted.

Table 1 Agricultural Output Price Index¹

Base year 1990=100

Period	Total outputs index	Livestock								Livestock products		Livestock and livestock products	Crop products					
		Prime cattle	Cows for slaughter	Store cattle	Total cattle	Sheep	Pigs	Poultry	Total	Milk	Total		Cereals	Sugar beet	Potatoes	Vegetables	Total	
1999	91.4	78.2	65.4	75.6	76.6	76.4	66.4	91.9	76.3	110.7	109.3	89.9	77.7	104.1	175.0	115.7	102.0	
2000	97.5	89.7	74.3	91.6	87.9	87.1	83.5	91.3	87.5	² 112.5	111.2	97.3	75.1	104.1	155.6	119.4	99.3	
2000	January	² 90.9	81.0	58.7	80.2	78.3	82.8	69.5	78.0	110.4	109.1	90.8	77.7	104.1	89.4	109.8	91.2	
	February	92.6	84.2	64.4	84.9	81.8	101.0	70.9	82.3	² 108.9	107.6	92.8	77.7	104.1	84.5	111.0	91.1	
	March	93.8	87.1	69.3	89.1	85.0	106.3	76.6	83.2	85.9	107.8	106.6	77.7	104.1	83.9	106.1	89.7	
	April	95.5	89.1	75.2	90.4	87.5	104.1	82.7	82.0	88.1	108.9	² 107.7	96.2	77.7	104.1	78.8	112.8	90.8
	May	97.6	93.8	78.5	96.2	92.0	91.6	85.5	82.9	90.7	109.8	² 108.7	98.1	77.7	104.1	85.7	122.9	94.2
	June	98.7	95.1	88.6	97.8	94.4	86.6	90.2	82.3	92.5	110.7	109.5	99.5	77.7	104.1	81.4	120.2	93.0
	July	100.7	93.4	89.9	96.8	93.0	80.0	89.5	81.9	90.8	111.9	110.7	99.0	77.7	104.1	264.5	125.2	112.9
	August	100.1	93.7	87.9	96.8	93.1	80.7	86.0	82.0	90.5	113.9	112.6	99.6	75.1	104.1	164.8	133.2	103.7
	September	101.3	92.2	86.3	95.2	91.5	81.9	86.3	81.9	89.5	119.1	117.6	101.1	75.1	104.1	184.2	122.5	102.9
	October	102.2	91.8	81.2	94.7	90.6	81.7	87.8	81.9	89.0	122.3	120.8	102.1	75.1	104.1	186.1	121.2	102.7
	November	101.0	87.2	73.6	89.6	85.6	88.6	91.7	82.2	86.4	² 122.5	120.8	100.6	75.1	104.1	184.3	122.9	103.6
	December	² 99.9	83.9	61.5	87.5	81.3	96.7	92.3	116.1	86.0	² 119.8	118.3	99.3	75.1	104.1	191.6	120.4	103.7
2001	January	101.3	90.8	62.4	96.2	87.5	109.2	91.6	83.2	89.7	² 117.9	² 116.4	² 100.7	75.1	104.1	213.0	121.6	105.9
	February	² 99.6	84.6	67.2	88.8	82.6	123.7	96.9	83.2	88.0	² 114.9	² 113.5	98.5	75.1	104.1	201.7	128.9	107.0
	March	101.1	86.5	67.9	90.8	84.4	140.2	107.2	84.4	92.1	113.1	111.7	100.2	75.1	104.1	209.9	127.3	107.5
	April	100.2	87.2	70.3	91.5	85.3	133.6	98.8	84.8	91.2	112.7	111.5	99.6	75.1	104.1	203.7	118.8	104.7
	May	102.8	85.6	69.0	89.8	83.7	142.1	103.2	85.1	91.4	117.2	115.9	101.5	75.1	104.1	195.1	154.1	112.5
	June	102.4	86.2	67.6	90.4	84.0	128.5	104.4	86.8	90.6	117.9	116.4	101.2	75.1	104.1	187.8	147.7	110.3
Jun 01/May 01	-0.4%	0.7%	-2.0%	0.7%	0.4%	-9.6%	1.2%	2.0%	-0.9%	0.6%	0.4%	-0.3%	0.0%	0.0%	-3.7%	..	-2.0%	
Jun 01/Jan 00	3.7%	-9.4%	-23.7%	-7.6%	-11.0%	48.4%	15.7%	5.5%	-2.1%	6.5%	6.3%	1.7%	-3.3%	0.0%	130.7%	22.9%	18.6%	

¹ Excluding VAT

² Revised

.. Comparison not valid

Table 2 Agricultural Input Price Index¹

Base year 1990=100

Period	Total inputs index	Feeding stuffs						Fertilizers					Seeds	Energy			Plant protection products	Veterinary expenses (incl. AI)	Other inputs ²
		Straight	Compound				All	Straight	Compound		All	Motor fuels		Elec-tricity	All energy				
			Calf	Cattle	Pig	Poultry			NPK	PK									
1999	103.5	93.1	90.3	91.6	91.7	92.6	91.9	94.0	93.3	103.5	95.2	136.5	108.8	103.1	108.3	116.8	129.5	120.4	
2000	109.5	96.7	92.9	94.7	93.2	94.4	94.4	101.0	96.1	105.4	99.2	129.1	143.7	103.1	134.7	116.1	135.1	126.2	
2000	January	106.2	93.3	91.5	93.3	91.8	93.1	92.9	97.4	94.6	104.3	97.1	129.6	126.8	103.1	121.9	116.8	129.9	123.5
	February	106.9	93.4	91.8	93.6	92.3	93.5	93.2	98.5	95.4	103.9	97.9	129.6	129.7	103.1	124.1	116.8	130.1	124.3
	March	107.8	94.1	91.8	93.6	92.1	93.5	93.2	98.5	95.4	103.9	97.9	129.6	136.0	103.1	129.0	116.5	135.2	124.5
	April	108.2	94.7	92.0	93.6	92.1	93.5	93.3	99.3	96.0	104.1	98.5	129.6	135.7	103.1	128.7	116.3	136.4	125.6
	May	108.1	98.4	92.2	93.8	92.3	93.6	93.8	100.2	96.2	104.2	98.8	129.6	132.7	103.1	126.2	116.1	136.4	125.2
	June	109.2	98.6	93.0	94.5	93.2	94.2	94.5	101.2	96.4	104.2	99.3	129.6	140.1	103.1	131.8	115.7	136.2	125.7
	July	109.7	98.5	93.2	95.0	93.4	94.4	94.8	101.1	96.4	104.3	99.2	129.6	143.4	103.1	134.6	115.7	136.3	126.0
	August	110.0	98.8	93.6	95.3	93.7	94.9	95.1	101.1	96.4	104.6	99.3	129.6	143.4	103.1	134.6	115.7	136.3	127.0
	September	111.7	99.1	93.5	95.3	93.7	95.0	95.2	101.7	96.5	105.6	99.6	129.6	159.7	103.1	146.8	115.7	136.2	128.0
	October	112.8	99.8	94.6	96.3	94.4	95.3	96.0	107.5	98.7	108.2	102.9	128.5	160.5	103.1	147.5	115.7	136.5	128.6
	November	113.6	99.6	94.6	96.8	94.5	95.4	96.2	112.5	102.2	109.6	106.5	128.5	160.1	103.1	147.4	115.8	136.1	129.0
	December	113.7	99.5	95.5	98.1	94.8	96.3	97.0	112.9	102.5	109.8	106.8	128.5	156.0	103.1	144.3	115.8	136.2	129.1
2001	January	113.8	100.4	96.1	98.7	95.3	96.6	97.6	115.2	104.5	109.6	108.7	137.1	142.4	103.1	134.2	116.3	139.1	130.3
	February	113.7	100.7	96.2	98.5	95.7	96.7	97.7	118.4	106.3	109.9	110.7	137.1	135.9	103.1	129.2	116.3	139.2	130.8
	March	114.3	101.2	96.2	98.7	95.7	96.7	97.8	118.1	106.7	109.7	110.8	137.1	138.4	103.1	131.0	116.6	141.0	132.0
	April	114.4	101.4	96.2	99.0	95.7	96.7	98.0	117.7	106.6	109.8	110.6	137.1	136.7	103.1	129.8	116.7	142.4	133.1
	May	115.0	101.4	96.2	98.9	95.9	96.8	98.0	117.1	106.0	109.8	110.1	137.1	143.5	103.1	134.8	116.8	142.5	133.8
	June	115.2	101.5	96.2	99.0	96.0	96.7	98.0	115.5	105.0	109.3	109.1	137.1	146.9	103.1	137.4	115.7	142.5	134.1
Jun 01/May 01	0.2%	0.1%	0.0%	0.1%	0.1%	-0.1%	0.0%	-1.4%	-0.9%	-0.5%	-0.9%	0.0%	2.4%	0.0%	1.9%	-0.9%	0.0%	0.2%	
Jun 01/Jun 00	5.5%	2.9%	3.4%	4.8%	3.0%	2.7%	3.7%	14.1%	8.9%	4.9%	9.9%	5.8%	4.9%	0.0%	4.2%	0.0%	4.6%	6.7%	

¹ Excluding VAT

² "Other inputs" includes maintenance and repairs, services other than veterinary, imports of young/store animals and miscellaneous materials

Table 3 Seasonally Adjusted Agricultural Output Price Index¹

Base year 1990=100

Period	Total outputs index	Prime cattle	Cows for slaughter	Store cattle	Sheep	Pigs	Poultry	Milk	Potatoes	Vegetables	
2000	January	292.4	82.0	66.2	82.3	87.4	75.0	85.8	109.2	93.8	108.9
	February	93.2	84.0	68.0	84.0	98.8	76.2	85.2	² 109.7	88.9	108.7
	March	93.3	82.2	69.7	83.6	96.3	76.4	84.6	111.1	89.2	109.3
	April	94.6	85.9	73.0	85.9	90.6	81.2	83.7	111.6	83.7	112.2
	May	95.3	89.1	74.8	90.6	80.1	82.9	83.9	111.6	86.2	117.8
	June	97.2	92.0	80.7	93.2	78.0	84.0	83.8	112.5	76.9	116.1
	July	99.6	92.8	83.6	95.3	81.0	83.6	82.8	114.0	182.0	123.4
	August	100.8	94.3	81.7	97.5	83.2	83.9	83.8	115.2	182.4	134.1
	September	101.5	94.2	82.5	98.3	89.0	85.9	84.8	116.4	179.8	123.0
	October	102.9	95.2	83.7	99.0	93.3	89.1	85.2	117.8	205.9	122.7
	November	102.1	92.0	77.2	96.7	102.3	94.2	85.1	² 118.1	198.7	126.7
	December	² 101.8	89.8	70.5	94.9	109.0	96.6	92.6	² 118.5	202.3	125.7
2001	January	102.9	92.0	70.7	98.8	115.4	99.0	85.2	² 116.6	223.5	120.8
	February	² 100.3	84.5	71.2	87.9	120.9	104.2	85.3	² 115.7	211.9	126.4
	March	100.6	81.6	68.4	85.3	126.8	106.9	85.9	116.6	222.8	131.5
	April	99.2	84.1	68.3	86.9	116.5	96.9	86.6	115.5	215.6	118.4
	May	100.4	81.3	65.7	84.5	124.0	100.1	86.1	119.1	195.9	148.0
	June	100.9	83.4	61.4	86.2	114.9	97.3	88.4	119.8	178.2	142.7
Jun 01/May 01	0.5%	2.6%	-6.5%	2.0%	-7.3%	-2.8%	2.7%	0.6%	-9.0%	..	

¹ Excluding VAT

² Revised

.. Comparison not valid

Table 4 Seasonally Adjusted Agricultural Input Price Index¹

Base year 1990=100

Period	Total inputs index	Feeding stuffs						Fertilizers				
		Straight	Compound				All	Straight	Compound		All	
			Calf	Cattle	Pig	Poultry			NPK	PK		
2000	January	106.4	94.4	91.8	93.6	92.4	93.3	93.3	96.0	93.9	103.5	96.1
	February	106.9	94.2	91.6	93.5	92.5	93.5	93.2	96.7	94.6	103.6	96.9
	March	107.6	94.2	91.5	93.3	92.2	93.4	93.1	97.5	94.8	103.9	97.3
	April	107.9	94.5	91.6	93.2	91.9	93.3	93.0	98.6	95.7	104.3	98.2
	May	107.8	97.5	91.9	93.2	91.7	93.4	93.3	100.0	96.2	104.5	98.8
	June	108.9	97.2	92.5	93.8	92.5	93.8	93.8	101.2	96.5	104.6	99.4
	July	109.4	97.1	92.7	94.2	92.8	94.0	94.1	101.6	96.7	105.0	99.6
	August	109.9	97.4	93.3	95.0	93.4	94.6	94.7	102.4	96.9	105.2	100.1
	September	111.8	98.6	93.7	95.7	93.9	95.2	95.4	103.0	97.1	105.7	100.4
	October	113.3	101.1	95.5	97.5	95.0	95.7	96.9	108.6	99.3	108.1	103.6
	November	114.0	101.1	95.5	97.7	95.0	96.0	97.0	113.3	102.4	109.3	107.0
	December	114.2	100.8	96.0	98.6	95.2	96.7	97.6	113.6	102.8	109.1	106.7
2001	January	114.0	101.6	96.4	99.0	95.9	96.8	98.0	113.6	103.8	108.7	107.6
	February	113.7	101.6	96.0	98.4	95.9	96.7	97.7	116.3	105.4	109.6	109.6
	March	114.1	101.3	95.9	98.4	95.8	96.6	97.7	116.9	106.1	109.7	110.1
	April	114.1	101.1	95.7	98.6	95.5	96.5	97.7	116.9	106.3	110.0	110.3
	May	114.7	100.4	95.9	98.3	95.3	96.6	97.5	116.9	106.0	110.1	110.1
	June	114.9	100.1	95.6	98.3	95.3	96.3	97.3	115.5	105.1	109.6	109.2
Jun 01/May 01	0.2%	-0.3%	-0.3%	0.0%	0.0%	-0.3%	-0.2%	-1.2%	-0.8%	-0.5%	-0.8%	

¹ Excluding VAT

Table 5 Selected output prices at livestock martsaverage £ per head¹

Category	1991	1992	1993	1994	1995	1996	1997	1998	1999	2000 ²
Bullocks										
200-249 kg ³	304	323	348	386	385	348	341	323	263	383
250-299 kg ³	354	368	399	426	421	377	398	367	319	443
300-349 kg ³	399	410	449	456	463	407	407	374	318	422
350-399 kg	447	456	499	516	507	443	425	390	370	462
400-449 kg	501	504	550	570	558	479	475	439	417	517
450-499 kg	559	558	603	617	609	520	512	478	465	548
500-549 kg	611	610	656	666	655	562	545	520	505	578
550+ kg	699	702	746	749	745	631	613	585	576	662
Heifers										
200-249 kg ³	253	258	283	313	297	263	246	225	187	258
250-299 kg ³	303	304	338	366	347	304	308	286	246	312
300-349 kg ³	356	356	392	411	397	347	331	309	254	325
350-399 kg	405	405	441	456	443	384	373	349	316	379
400-449 kg	456	453	495	509	496	429	416	393	368	427
Sheep ³										
30-39 kg	36	31	36	38	36	46	47	37	34	36
40-49 kg	41	38	43	46	44	54	57	49	44	47
50-59 kg	47	44	46	53	52	61	64	52	49	54
Pigs ³										
15-24 kg	23	25	18	21	25	29	22	15	15	20
25-34 kg	30	31	25	27	33	36	31	23	21	29
35-44 kg	35	37	31	32	39	43	37	29	25	35
45-54 kg	39	42	36	38	45	49	42	34	26	38

¹ Including VAT, rounded to nearest £² 2000 data incorporates small differences in methodology³ Not used in the compilation of the indices

Table 6 Selected agricultural input prices

average £ per tonne¹

Category	1990	1991	1992	1993	1994	1995	1996	1997	1998	1999	2000
Feeding stuffs											
Straight											
Rolled barley ²	166	163	162	162	157	156	161	150	138	146	146
Barley meal	170	168	168	168	163	163	166	155	144	142	143
Soya bean meal	228	196	194	210	219	200	229	255	223	184	218
Maize meal	218	231	227	223	200	206	207	190	168	179	179
Maize flaked ²	290	300	297	288	276	275	284	279	271	265	264
Pig											
Pig grower	213	200	200	197	199	192	207	203	187	180	182
Pig fattening meal	195	194	196	196	195	195	206	196	190	188	187
Sow breeder ²	200	193	195	194	193	190	199	198	188	181	177
Sow weaner & bonham meal	208	203	206	204	202	199	210	204	198	190	193
Cattle											
Cattle fattening nuts & cubes 13-15% protein	170	162	163	164	165	164	171	163	154	151	156
Calf nuts & cubes 14-15% protein ²	191	183	183	186	187	190	197	183	168	161	167
Dairy nuts & cubes 13-15% protein ²	166	160	167	165	167	161	173	165	155	145	148
Dairy nuts & cubes 16-18% protein	174	165	166	168	170	168	176	170	160	154	159
Dairy meal 16-18% protein ²	177	168	173	171	172	171	180	172	159	150	154
Calf nuts & cubes 16-18% protein	192	184	185	185	186	183	195	189	179	174	178
Calf meal 16-18% protein ²	194	182	189	204	204	200	213	212	206	188	183
Milk replacer	1,272	1,176	1,210	1,267	1,290	1,308	1,351	1,324	1,318	1,307	1,314
Poultry											
Layer mash	217	208	205	207	207	202	210	206	205	209	218
Chick mash	248	242	243	243	241	229	237	239	235	225	230
Broiler finisher	269	260	259	263	258	246	257	251	245	240	239
Broiler starter	281	277	275	273	271	255	267	265	262	256	257
Fertilizers											
Straight											
Calcium ammonium nitrate 27.5% N	113	119	114	104	108	122	128	118	109	112	129
Urea 46% N	140	157	154	143	146	158	171	163	152	149	158
Muriate of potash 50% K	152	153	150	147	154	162	169	166	164	164	171
Granular superphosphate 16% P	194	190	189	183	188	196	201	199	199	205	211
Compound											
0-10-20	137	130	130	120	128	136	142	136	134	147	151
0-7-30	135	128	128	120	128	136	142	137	134	147	151
10-10-20	166	164	162	154	157	173	180	172	168	170	176
14-7-14	157	158	157	148	151	166	174	166	157	158	163
18-6-12	154	155	152	144	147	163	170	162	155	156	161
24-2.5-10	150	157	155	147	149	159	170	162	153	156	162
27-2.5-5	147	154	151	143	146	157	166	158	150	152	160

¹ Including VAT, rounded to nearest £

² Not used in the compilation of the indices

Background Notes

- Introduction** This release presents estimates of Agricultural Input and Output Price Indices. The indices monitor trends in prices paid to farmers for their produce and in prices paid by farmers for purchases of goods and services.
- The methodology is harmonised throughout the EU. The estimates are given to Eurostat, the Statistical Office of the European Communities. Preliminary annual indices, based on around nine months data, are also published each November.
- Methodology** The agricultural output price index numbers are intended to measure trends in the price levels of agricultural produce sold by farmers. They have been compiled on the basis of the “national farm” concept. The Laspeyres index formula, involving the use of fixed base year weights, has been used for all commodities except vegetables. Because of the highly seasonal nature of vegetables, variable monthly baskets are used.
- Monthly price series are used except for seasonal products, such as seeds, where prices are only available at certain times during the year. In these cases, the monthly prices returned during the last selling period are continued unchanged until the product can be priced again.
- The monthly sub-indices are weighted by the value of sales off farms and the expenditure on farm inputs to derive overall monthly total input and total output indices. The annual indices are weighted averages of the twelve monthly indices. The weights exclude both the value of inter-farm sales and the value of own produce consumed in farm households.
- Price Coverage** The index prices used are after deduction of levies and exclusion of value added tax. Standardised prices are used for milk, cereals and sugar beet to ensure that products of identical quality are priced in successive periods. In the case of milk, this means pricing at a fixed butterfat content and excluding special bonuses paid in respect of some deliveries to creameries. Standardised cereal prices take account of moisture content with additional allowance made in the case of wheat for specific gravity and protein content. Sugar beet prices are standardised at a fixed sugar content. Allowance is made for subsidies paid to suppliers of agricultural inputs.
- Data sources** The indices are compiled from a wide variety of sources, including direct CSO surveys and administrative data from the Department of Agriculture, Food and Rural Development. The actual sources are described more fully in the June 1995 issue of the Statistical Bulletin.
- Livestock auction mart prices are used for cattle. For sheep and pigs, representative licensed export premises prices are used. Poultry prices at livestock auction marts and approved processing premises are used. For milk, the CSO collects prices from creameries. Feeding stuffs and fertilizers prices are collected through a CSO survey of merchants and co-operatives.
- Seasonal adjustment** As many agricultural products follow a seasonal production pattern, seasonally adjusted monthly series for the total indices and selected sub-indices are also published. The use of standardised prices for some commodities reduces the seasonality of these prices.
- Rebasing** The series are normally rebased every five years. The next rebasing will set 1995 as 100. The value of sales off farms and the expenditure on farm inputs, both averaged over the three years 1994-1996, would normally be used as weights. Methodological discussions at EU level taking place with Eurostat in Luxembourg may result in a significantly different approach being adopted with regard to weighting and pricing.
- References** Agricultural Price Indices, Preliminary Estimates, annual CSO release.
Eurostat Statistics in Focus - Agricultural Price trends in the EU.
CSO Statistical Bulletin, absolute agricultural prices.
- Foot and Mouth Disease** Due to restrictions on farm trade alternative series have been used for some indices. The cattle indices for March, April, May and June have been calculated from licensed export premises prices.

EU EU output price indices %

Country	Oct-Dec 2000 / Oct-Dec 1999			
	Total outputs	Cattle	Sheep	Cow's Milk
European Union	4.3	-2.1	9.7	6.3
Austria	6.7	-1.4	..	2.3
Belgium	12.5	7.7	10.5	4.5
Denmark	10.7	1.7	9.3	11.9
Finland	8.8	-0.4	0.9	18.0
France	1.2	-8.4	27.3	4.9
Germany	8.7	-4.3	8.2	8.7
Greece	0.1	-2.3	4.3	3.8
Ireland	10.8	14.4	27.8	6.0
Italy	1.7	2.9	1.6	0.1
Luxembourg	2.6	4.5	..	1.5
Netherlands	9.1	-0.7	23.5	13.3
Portugal	4.6	-1.7	-1.4	0.0
Spain	4.0	-5.3	-0.5	5.9
Sweden	0.3	2.3	-3.2	2.8
United Kingdom	5.3	-4.7	17.2	4.6

.. Indices not available due to negligible sheep production in these countries

Source: New Cronos database, Eurostat

EU input price indices %

Country	Oct-Dec 2000 / Oct-Dec 1999			
	Total inputs	Energy	Fertilizers	Feeding Stuffs
European Union	7.9	24.5	17.3	6.2
Austria	9.6	11.4	16.0	26.7
Belgium	9.7	36.8	12.3	8.2
Denmark	6.7	21.0	14.4	6.8
Finland	10.0	33.5	9.5	6.9
France	7.7	19.1	15.7	11.2
Germany	11.3	36.0	18.5	12.7
Greece	11.9	32.3	3.4	2.7
Ireland	8.2	25.1	11.5	4.5
Italy	2.9	6.4	4.5	2.1
Luxembourg	8.2	20.5	26.6	1.1
Netherlands	10.7	28.4	40.5	7.7
Portugal	8.1	35.2	25.0	5.1
Spain	6.8	24.9	19.2	2.3
Sweden	8.1	22.7	19.5	2.0
United Kingdom	5.5	16.8	43.9	2.8

Source: New Cronos database, Eurostat