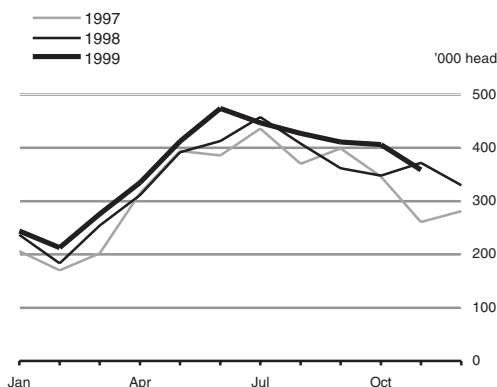




Sheep slaughterings



Livestock Slaughterings November 1999

	Cattle	Sheep	Pigs
	'000 head		
Jan-Nov 1998	1,751.0	3,736.3	3,072.7
Jan-Nov 1999	1,962.3	4,004.4	3,269.0
% change	+12.1%	+7.2%	+6.4%
Nov 1999 / Nov 1998	+2.5%	-3.5%	+3.7%

Cattle slaughterings up 2.5% in November

The number of cattle slaughtered in November 1999 was 2.5% higher than in November 1998.

The number of cattle slaughterings in January-November 1999 was 12.1% higher than the corresponding 1998 figure. Over the same period, pig slaughterings increased by 6.4% while sheep slaughterings were also up by 7.2%.

A comparison of November 1999 and 1998 figures shows that (*see Table 1*):

- ◆ Sheep slaughterings decreased by 3.5%. *See graph.*
- ◆ Pig slaughterings increased by 3.7%.

EU sheep slaughtering figures for the periods January to June 1998 and 1999 show that overall numbers decreased by 0.2%. Ireland and Germany recorded increases of 9.2% and 3.3% respectively, while France recorded a decrease of 3.2%. *See Page 4.*

For more information contact Keith McSweeney at 021-535311 or Catriona Forrestal at 021-535334.

Published by the Central Statistics Office, Ireland.

Ardee Road Skehard Road
Dublin 6 Cork
Ireland Ireland

LoCall: 1890 313 414

Tel: +353-1 497 7144 Tel: +353-21 535000
Fax: +353-1 497 2360 Fax: +353-21 535555

Both offices may be contacted through any of these telephone numbers.

CSO on the Web: <http://www.cso.ie>

Director General: Donal Murphy

Enquiries:

Statistics	Agriculture Section, ext 5338 agri@cso.ie
Sales	Information Section, ext 5032 information@cso.ie
Diskette Service	Databank, ext 5301/5499 databank@cso.ie

© Central Statistics Office
The contents of this release may be quoted provided the source is given clearly and accurately. Reproduction for own or internal use is permitted.

Table 1 Livestock Slaughterings

Category	Year	Unit	Jan	Feb	Mar	Apr	May	Jun	Jul	Aug	Sep	Oct	Nov	Dec	Total
Cattle	1997	'000	170.7	153.9	160.8	164.7	143.9	105.5	126.1	130.6	174.0	178.8	176.3	114.9	1,800.2
	1998		181.9	163.5	183.6	178.1	119.0	111.9	141.9	143.5	151.3	169.8	206.5	155.0	1,906.0
	1999		188.8	179.1	197.2	164.9	152.6	*150.4	146.8	170.6	*199.1	*201.2	211.6		
Sheep	1997	'000	205.9	169.5	201.8	315.1	394.0	386.1	436.1	370.2	399.3	345.7	260.7	281.2	3,765.6
	1998		237.1	182.6	254.2	310.9	391.5	413.1	457.6	407.6	362.0	347.6	372.1	330.3	4,066.6
	1999		243.6	212.8	275.9	*335.4	*412.4	*474.3	*447.1	*426.9	*411.3	*405.7	359.0		
Pigs	1997	'000	270.3	240.1	238.8	260.9	252.7	242.9	252.9	243.5	268.4	275.9	266.9	252.1	3,065.4
	1998		262.8	248.3	271.5	271.7	252.6	269.9	290.1	279.6	317.2	293.1	315.9	282.2	3,354.9
	1999		299.1	299.0	322.3	295.7	275.8	284.0	294.4	290.9	*292.0	*288.1	327.7		
Cattle	1997	'000	56.1	47.8	49.2	51.3	45.1	31.9	39.3	41.9	56.3	57.6	55.9	35.2	567.6
	1998	tonnes ¹	59.0	51.4	57.6	55.0	35.3	33.2	42.9	44.1	46.4	52.5	65.2	47.1	589.7
	1999		58.2	54.2	57.8	48.8	45.6	45.0	44.2	51.9	*60.8	*61.1	64.2		
Sheep	1997	'000	4.5	3.7	4.3	6.6	8.1	8.0	9.0	7.7	8.3	7.2	5.6	6.0	79.0
	1998	tonnes ¹	5.1	3.9	5.3	6.4	8.0	8.4	9.2	8.3	7.4	7.2	7.6	6.8	83.6
	1999		5.1	4.4	5.7	6.8	*8.3	*9.5	*9.0	8.7	8.4	*8.2	7.4		
Pigs	1997	'000	19.7	17.3	17.2	18.7	18.3	17.1	18.0	17.3	19.2	20.1	19.1	17.9	219.9
	1998	tonnes ¹	18.9	17.7	19.4	19.3	17.9	18.9	20.3	19.7	22.5	21.3	23.0	22.2	241.1
	1999		21.8	21.5	23.2	20.7	19.3	20.3	21.1	20.9	20.9	20.9	23.8		

¹ Carcass weight

* Revised

Background Notes

- Introduction** This release gives details on the number and carcass weight of cattle, sheep and pig slaughtering. These figures include slaughtering at both meat export and Local Authority premises. Estimates for on-farm kill of sheep and pigs have also been incorporated.
- Export licensed factories** Information on the number of slaughtering in meat export premises for cattle and sheep are received from the Department of Agriculture and Food on a monthly basis. Average carcass weights of cattle are taken from the Department's Beef Carcass Classification Scheme. Average weights of sheep are based on information obtained directly from the export factories by the CSO.
- Numbers and weights of pigs slaughtered in export-licensed factories are based on a monthly CSO survey of all such premises.
- Local Authorities** The CSO conducts a monthly survey of all Local Authorities in the State. All slaughtering in premises over which inspection controls are exercised are included.
- The CSO estimates the carcass weight of cattle and sheep slaughtered under Local Authority control. These estimates are reviewed on a regular basis with butchers and abattoirs.
- Calves** Calves are included with cattle.
- Carcass weight** For cattle, the carcass weight is defined as the weight of the slaughtered animal's cold body after being skinned, bled and eviscerated and after removal of external genitalia, the limb at the carpus and tarsus, head, tail, kidneys and kidney fats and the udder.
- For sheep, the carcass weight is defined as the weight of the slaughtered animal's cold body after being skinned, bled and eviscerated and after removal of the head, feet, tail and genital organs including the udder. Kidneys and kidney fats are included in the carcass.
- For pigs, the carcass weight is defined as the weight of the slaughtered animal's cold body either whole or divided in half along the mid-line, after being bled and eviscerated and after the removal of the tongue, bristles, hooves, genitalia, flare fat, kidneys and diaphragm.
- References** Comparable livestock slaughtering results from EU member states are contained in the European Statistical Office (Eurostat) publication *Monthly Statistics of Meat*.

Sheep Slaughterings

'000 head

Country	Jan-June 1998	Jan-June 1999	% change
European Union	34,575	34,519	-0.2%
Austria	169	162	-4.1%
Belgium	103	50	-51.5%
Denmark	22	23	4.5%
Finland	23	16	-30.4%
France	4,029	3,901	-3.2%
Germany	1,063	1,098	3.3%
Greece	4,907	4,920	0.3%
Ireland	1,789	1,954	9.2%
Italy	3,507	3,534	0.8%
Luxembourg	0	0	0%
Netherlands	331	334	0.9%
Portugal	548	543	-0.9%
Spain	9,814	9,740	-0.8%
Sweden	49	56	14.3%
United Kingdom	8,221	8,188	-0.4%

Source: New Cronos database, Eurostat