

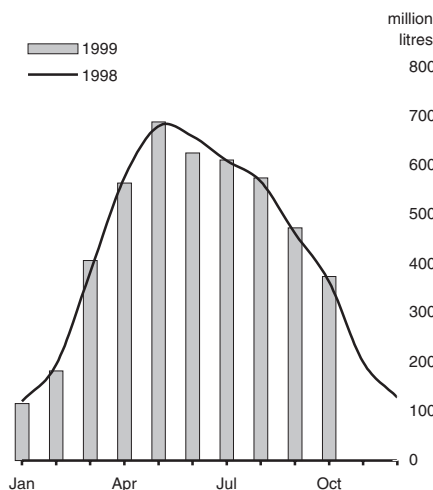


Central Statistics Office
An Phríomh-Oifig Staidrimh



30 November 1999

Milk Intake



Milk Statistics

October 1999

Milk intake	1998	1999	% change
	million litres		
Oct	363.2	374.2	+3%
Jan-Oct	4,615.4	4,616.9	0%

Milk intake up 3%

Milk intake by Creameries and Pasteurisers was estimated as 374.2 million litres for October 1999. This was 3% above the corresponding 1998 figure. *See graph.*

The average fat content for April 1999 to October 1999 was 3.67%.

Milk intake for April to October in the quota year 1999/2000 was 0.1% below the milk intake figure for the same period in the previous year.

Comparing the October 1999 milk produce figures with those for October 1998 shows that (*see Table 1*):

- ◆ Total milk sold for human consumption decreased by 4.3% to 44.9 million litres.
- ◆ Butter production was down 2.9% to 10,100 tonnes.

Cheese production in June 1999 was 18.9% above the June 1998 estimate.

The information used to compile this release was collected under EU Directive 96/16/EC.

For more information contact Jane Lenehan at 021-535308 or John Kiely at 021-535346.

Published by the Central Statistics Office, Ireland.

Ardee Road
Dublin 6
Ireland

Skehard Road
Cork
Ireland

LoCall: 1890 313 414

Tel: +353-1 497 7144
Fax: +353-1 497 2360

Tel: +353-21 535000
Fax: +353-21 535555

Both offices may be contacted through any of these telephone numbers.

CSO on the Web: <http://www.cso.ie>

Director General: Donal Murphy

Enquiries:

Statistics	Agriculture Section, ext 5367 agri@cso.ie
Sales	Information Section, ext 5032 information@cso.ie
Diskette Service	Databank, ext 5301/5499 databank@cso.ie

© Central Statistics Office

The contents of this release may be quoted provided the source is given clearly and accurately. Reproduction for own or internal use is permitted.

Ref 253/1999

ISSN 1393-516X

Table 1 Milk Statistics

Category	Year	Unit	Jan	Feb	Mar	Apr	May	Jun	Jul	Aug	Sep	Oct	Nov	Dec	Year
Milk intake by creameries and pasteurisers	1997	million	127.6	197.5	384.1	640.3	726.3	674.4	660.7	559.6	447.8	357.5	200.6	128.2	5,104.7
	1998	litres	120.4	195.0	382.3	575.5	680.0	659.5	609.8	567.8	461.9	363.2	200.6	128.4	4,944.4
	1999		115.7	182.1	¹ 406.8	¹ 564.3	689.0	¹ 625.5	¹ 611.0	¹ 574.9	¹ 473.4	374.2			
<i>Fat content</i>	1997	percent	3.76	3.56	3.52	3.44	3.46	3.50	3.54	3.65	3.82	4.02	4.01	3.81	3.61
	1998		3.67	3.61	3.57	3.55	3.49	3.55	3.60	3.68	3.87	4.08	4.06	3.88	3.67
	1999		3.77	3.68	3.62	3.58	3.52	3.54	3.60	3.71	3.89	4.11			
Total milk sold for human consumption	1997	million	43.0	41.5	44.6	44.1	46.0	43.5	46.1	46.2	44.7	45.6	44.0	43.7	533.0
	1998	litres	44.2	40.9	45.3	44.8	45.2	44.2	47.0	47.5	46.2	46.9	43.9	47.1	543.2
	1999		43.8	39.7	45.0	43.8	44.4	44.6	45.4	45.7	¹ 44.1	44.9			
of which: <i>Whole milk sales</i>	1997	million	35.7	34.3	36.9	36.3	37.8	35.8	38.2	38.3	36.8	37.6	36.2	36.2	440.2
	1998	litres	36.5	33.7	37.0	35.8	36.8	36.2	38.4	38.8	37.7	38.2	35.8	38.3	443.2
	1999		35.3	32.0	¹ 36.1	35.2	¹ 35.6	35.9	36.5	36.8	¹ 35.5	36.1			
<i>Skimmed & semi-skimmed milk sales</i>	1997	million	7.3	7.2	7.8	7.8	8.2	7.7	7.9	7.9	7.8	8.1	7.7	7.5	92.8
	1998	litres	7.7	7.2	8.3	9.0	8.4	8.0	8.6	8.6	8.5	8.7	8.1	8.8	99.9
	1999		8.5	7.7	8.8	8.6	8.8	¹ 8.8	8.9	8.9	8.6	8.8			
Butter	1997	'000	2.0	3.5	9.3	16.8	20.1	19.0	18.9	15.9	13.9	11.1	5.2	3.0	138.6
	1998	tonnes	2.5	3.7	8.7	14.7	16.3	18.4	18.0	16.2	13.7	10.4	4.8	3.8	131.1
	1999		2.5	3.6	10.7	15.1	18.4	17.8	¹ 17.4	¹ 15.5	¹ 13.0	10.1			
Skimmed milk powder	1997	'000	1.5	3.9	4.7	13.9	16.5	17.5	14.7	11.1	7.2	4.5	3.2	2.8	101.6
	1998	tonnes	1.8	2.1	4.5	9.1	15.4	13.5	13.6	12.5	8.2	4.8	1.8	3.6	90.9
	1999		2.0	3.0	7.0	10.2	12.2	11.2	11.4	11.1	6.5	3.5			
Cheese	1997	'000	2.3	4.3	5.7	11.2	13.9	13.3	12.4	9.5	9.2	7.4	4.3	3.2	96.7
	1998	tonnes	1.7	2.9	8.1	11.4	12.9	12.7	11.6	10.4	10.7	8.4	3.4	1.1	95.3
	1999		1.2	2.3	8.8	15.0	¹ 15.0	15.1							

¹ Revised

Background Notes

Coverage The monthly milk and milk products inquiry is a census of all creameries and pasteurisers. Information on cheese production is provided by the monthly industrial production inquiry also carried out by the CSO.

Milk intake by creameries and pasteurisers Whole milk purchased by creameries and pasteurisers from producers through collection depots and separating stations including whole milk obtained from herds owned by the creameries and pasteurisers. The fat content of the whole milk is also collected. To convert milk intake from million litres to '000 tonnes use the following formula:

1 tonne liquid milk = 971.164 litres.

Milk Quota The milk quota year is from April to March. For the 1999/2000 milk quota year an adjustment will be made to the milk intake figure if the overall fat content exceeds 3.58 per cent. The formula for the adjustment is given below:

Milk Intake (adjusted) = $\{1 + (\text{Fat Content} - 3.58)(0.18)\} \times \text{Milk Intake (unadjusted)}$

Skimmed milk Milk with less than or equal to 0.3% fat content.

Semi-skimmed milk Milk with between 1.5% and 1.8% fat content.

Skimmed milk powder Milk powder with not more than 1.5% milk fat content.

Related releases The CSO publishes an annual supply balance sheet relating to milk and milk products.

EU		Milk intake by creameries and pasteurisers			'000 tonnes
		Country	Jan-Mar 1998	Jan-Mar 1999	% change
		European Union	27,743	27,991	0.9
		Austria	563	605	7.5
		Belgium	806	797	-1.2
		Denmark	1,081	1,079	-0.2
		Finland	612	601	-1.8
		France	6,006	6,064	1.0
		Germany	6,494	6,492	-0.0
		Greece	131	126	-3.8
		Ireland	718	725	1.0
		Italy	2,579	2,598	0.7
		Luxembourg	63	63	1.0
		Netherlands	2,679	2,645	-1.3
		Portugal	413	442	7.2
		Spain	1,281	1,344	4.9
		Sweden	824	826	0.3
		United Kingdom	3,493	3,584	2.6

Source: New Cronos database, Eurostat