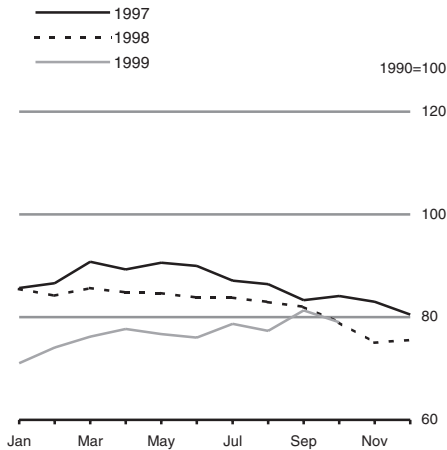




### Prime cattle price index

Seasonally adjusted



## Agricultural Price Indices October 1999

Seasonally adjusted

	Output	Input	Terms of trade
	1990 = 100		
<b>Sep 1999</b>	92.5	104.6	88.4
<b>Oct 1999</b>	91.4	104.9	87.1
<b>% change</b>	-1.2%	0.3%	-1.5%

### Prime cattle prices down 2.8% in October

The seasonally adjusted prime cattle price index was 79.0 in October 1999, 2.8% lower than in September 1999. *See Table 3 and graph.*

There was a decrease of 1.2% in the seasonally adjusted output price index. Decreases in cattle, pigs, sheep and potatoes offset increases in milk and poultry. The seasonally adjusted input price index increased by 0.3%. Thus the terms of trade decreased by 1.5% indicating an unfavourable price movement for farmers in the month.

Comparing October 1999 unadjusted agricultural price indices with the corresponding October 1998 indices shows that (*see Tables 1 and 2*):

- ◆ Feeding stuffs were up 0.5%, fertilizers were up 0.3% and energy prices were up 13.7%.
- ◆ Cattle, sheep and milk were down 1.9%, 4.0% and 3.7% respectively while pigs increased by 11.4%.

EU output and input price indices for selected items are shown at the back of this release. The figures show that EU cow's milk prices were down 4.4% in the second quarter of 1999.

*For further information contact Caroline Kelly at 021-535331 or Mary Murphy at 021-535313.*

Published by the Central Statistics Office, Ireland.

Ardee Road  
Dublin 6  
Ireland

Skehard Road  
Cork  
Ireland

LoCall: 1890 313 414

Tel: +353-1 497 7144  
Fax: +353-1 497 2360

Tel: +353-21 535000  
Fax: +353-21 535555

Both offices may be contacted through any of these telephone numbers.

CSO on the Web: <http://www.cso.ie>

Director General: Donal Murphy

Enquiries:

Statistics      Agriculture Section, ext 5313  
                         agri@cso.ie

Sales             Information Section, ext 5032  
                         information@cso.ie

Diskette Service      Databank, ext 5301/5499  
                         databank@cso.ie

© Central Statistics Office

The contents of this release may be quoted provided the source is given clearly and accurately. Reproduction for own or internal use is permitted.

**Table 1 Agricultural Output Price Index<sup>1</sup>**

Base year 1990=100

Period	Total outputs index	Livestock								Livestock products		Livestock and livestock products	Crop products				
		Prime cattle	Cows for slaughter	Store cattle	Total cattle	Sheep	Pigs	Poultry	Total	Milk	Total		Cereals	Sugar beet	Potatoes	Vegetables	Total
1997	<b>96.2</b>	86.6	80.7	88.9	86.0	96.8	95.2	95.9	88.6	109.8	109.1	97.1	70.2	110.2	118.3	106.6	90.4
1998	<b>95.4</b>	82.0	75.6	82.7	81.2	82.2	74.5	94.3	81.3	113.7	112.5	94.1	73.9	104.8	216.5	115.3	104.1
1998 January	<b>96.2</b>	85.8	67.5	83.6	83.5	84.2	81.0	88.8	83.6	115.5	114.7	96.4	70.2	110.2	136.5	114.9	94.6
February	<b>95.6</b>	86.1	72.4	86.7	84.5	77.4	86.7	88.1	84.3	112.5	111.7	95.6	70.2	110.2	150.8	114.0	95.9
March	<b>96.6</b>	90.8	78.5	91.6	89.4	80.6	87.5	88.5	88.3	109.8	109.1	96.9	70.2	110.2	150.0	108.8	94.7
April	<b>97.1</b>	89.2	81.7	91.0	88.3	82.7	84.3	87.8	87.3	111.4	110.3	96.8	70.2	110.2	184.3	113.4	99.3
May	<b>99.5</b>	88.5	83.0	88.4	87.8	97.7	81.8	88.4	88.1	113.4	112.3	98.1	70.2	110.2	271.4	119.7	109.8
June	<b>98.6</b>	85.9	85.3	87.1	85.9	101.4	79.3	88.4	86.6	113.4	112.2	97.2	70.2	110.2	254.1	121.1	108.5
July	<b>97.0</b>	82.5	81.4	82.7	82.4	97.8	75.9	88.4	83.4	113.3	112.1	95.2	70.2	110.2	279.0	116.8	109.9
August	<b>95.4</b>	81.2	82.2	80.0	81.3	90.9	69.8	88.4	81.2	113.8	112.4	94.1	73.9	110.2	217.9	114.1	104.8
September	<b>94.6</b>	78.1	78.4	76.2	78.1	75.3	66.2	83.3	76.7	117.5	115.9	92.9	73.9	104.8	237.3	117.4	106.8
October	<b>93.0</b>	75.7	73.4	72.8	75.3	68.3	64.1	82.5	73.8	118.6	117.0	91.6	73.9	104.8	200.5	116.6	103.0
November	<b>91.6</b>	72.7	72.5	68.1	72.6	62.4	62.3	81.7	71.0	117.6	116.0	89.5	73.9	104.8	241.2	113.1	106.3
December	<b>91.2</b>	71.5	62.4	68.0	70.3	63.9	60.8	113.3	71.1	115.3	113.7	88.7	73.9	104.8	267.3	113.8	109.2
1999 January	<b>90.4</b>	71.2	62.6	67.0	70.1	66.2	58.1	82.1	69.0	114.8	113.3	87.3	73.9	104.8	277.6	124.0	113.0
February	<b>91.7</b>	75.7	62.8	73.6	74.1	77.1	57.6	82.4	72.9	112.5	111.1	88.6	73.9	104.8	282.7	124.4	113.8
March	<b>93.3</b>	80.8	67.9	80.3	79.2	87.7	61.8	83.5	78.2	109.1	107.7	90.4	73.9	104.8	288.2	123.3	114.0
April	<b>93.2</b>	81.7	69.2	80.2	80.1	90.7	62.7	83.7	79.2	108.3	106.9	90.6	73.9	104.8	272.9	120.1	111.6
May	<b>92.9</b>	80.1	70.5	77.5	78.9	96.9	63.2	84.1	79.0	108.7	107.4	90.7	73.9	104.8	252.8	119.3	109.1
June	<b>91.0</b>	78.0	71.8	75.3	77.2	90.2	66.7	82.0	77.4	109.0	107.5	89.8	73.9	104.8	187.2	108.1	99.5
July	<b>91.1</b>	77.5	70.3	74.6	76.6	76.8	73.5	84.1	76.7	107.7	106.5	89.0	73.9	104.8	236.6	116.4	106.7
August	<b>89.9</b>	75.8	69.6	72.8	75.0	68.8	72.5	81.3	74.5	110.5	109.1	88.8	<sup>2</sup> 76.1	104.8	134.1	119.3	98.0
September	<b>91.2</b>	77.5	68.2	73.7	76.2	66.8	73.9	81.7	75.4	112.3	110.9	90.1	<sup>2</sup> 76.1	104.5	148.8	118.6	99.3
October	<b>90.3</b>	75.8	61.3	71.1	73.9	65.6	71.4	82.1	73.3	114.2	112.8	89.6	<sup>2</sup> 76.1	104.5	115.9	115.2	95.1
Oct 99/Sep 99	<b>-1.0%</b>	-2.2%	-10.1%	-3.5%	-3.0%	-1.8%	-3.4%	0.5%	-2.8%	1.7%	1.7%	-0.6%	0.0%	0.0%	-22.1%	..	-4.2%
Oct 99/Oct 98	<b>-2.9%</b>	0.1%	-16.5%	-2.3%	-1.9%	-4.0%	11.4%	-0.5%	-0.7%	-3.7%	-3.6%	-2.2%	3.0%	-0.3%	-42.2%	-1.2%	-7.7%

<sup>1</sup> Excluding VAT

<sup>2</sup> Provisional

.. Comparison not valid

**Table 2 Agricultural Input Price Index<sup>1</sup>**

Base year 1990=100

Period	Total inputs index	Feeding stuffs						Fertilizers					Seeds	Energy			Plant protection products	Veterinary expenses (incl. AI)	Other inputs <sup>2</sup>
		Straight	Compound				All	Straight	Compound		All	Motor fuels		Elec- tricity	All energy				
			Calf	Cattle	Pig	Poultry			NPK	PK									
1997	<b>105.1</b>	96.7	96.6	98.6	97.9	95.1	97.4	101.4	97.5	98.3	99.0	129.8	105.7	102.4	105.7	116.9	124.6	116.6	
1998	<b>102.8</b>	93.3	93.0	93.3	94.3	93.4	93.5	94.2	93.4	97.3	94.5	130.6	101.4	103.1	102.6	117.3	128.1	118.3	
1998 January	<b>103.5</b>	93.4	93.8	94.5	95.3	94.3	94.4	95.5	94.1	96.7	95.2	131.2	106.0	103.1	106.1	117.1	125.5	117.7	
February	<b>103.4</b>	93.5	94.3	94.7	95.5	94.1	94.6	95.4	94.1	96.0	95.1	131.2	104.2	103.1	104.7	117.1	125.7	117.9	
March	<b>103.5</b>	94.0	94.3	94.6	95.5	94.1	94.6	95.4	94.1	95.6	95.0	131.2	103.7	103.1	104.3	117.4	128.3	118.1	
April	<b>103.4</b>	94.0	94.3	94.9	95.8	94.2	94.8	94.6	93.5	95.6	94.4	131.2	101.9	103.1	103.0	117.4	128.8	118.1	
May	<b>103.2</b>	94.2	93.4	94.2	95.7	93.8	94.3	93.4	92.8	95.6	93.7	131.2	102.5	103.1	103.5	117.5	128.8	118.3	
June	<b>103.0</b>	94.2	93.2	93.9	95.5	93.7	94.2	93.1	92.6	95.7	93.6	131.2	101.4	103.1	102.7	117.5	128.8	118.3	
July	<b>102.8</b>	94.3	93.2	93.9	94.9	93.8	94.1	93.4	92.6	95.7	93.6	131.2	100.5	103.1	102.0	117.4	128.8	118.1	
August	<b>102.6</b>	94.6	92.4	92.9	94.0	93.7	93.4	92.7	92.5	97.1	93.5	131.2	100.8	103.1	102.2	117.3	128.8	118.3	
September	<b>102.1</b>	94.0	91.7	91.9	92.9	92.7	92.5	92.7	92.4	98.6	93.6	131.2	99.0	103.1	100.9	117.3	128.7	118.3	
October	<b>101.8</b>	92.0	90.7	90.7	92.5	92.4	91.5	92.8	92.4	100.6	93.9	130.0	100.0	103.1	101.6	117.3	128.6	118.1	
November	<b>101.6</b>	92.2	90.4	90.7	92.4	92.0	91.4	93.0	92.5	100.8	94.0	130.0	98.8	103.1	100.7	117.1	128.2	117.8	
December	<b>101.5</b>	93.0	90.4	90.6	92.4	91.9	91.5	93.3	92.5	100.8	94.1	130.0	97.5	103.1	99.7	117.1	128.2	118.0	
1999 January	<b>101.9</b>	92.8	90.0	91.1	91.6	92.3	91.6	95.0	93.5	103.2	95.4	<sup>3</sup> 137.0	95.6	103.1	98.3	117.1	128.3	118.1	
February	<b>102.3</b>	93.2	90.3	91.4	91.7	92.6	91.8	95.5	93.8	103.9	95.8	<sup>3</sup> 137.0	96.7	103.1	99.2	117.2	128.5	118.7	
March	<b>102.6</b>	94.9	90.4	91.5	91.7	92.6	92.1	94.9	93.6	103.6	95.5	<sup>3</sup> 137.0	98.7	103.1	100.6	117.2	129.0	<sup>3</sup> 118.9	
April	<b>103.1</b>	95.3	90.4	91.8	91.8	92.5	92.2	94.3	93.3	103.5	95.2	<sup>3</sup> 137.0	103.4	103.1	104.2	116.9	129.7	<sup>3</sup> 119.8	
May	<b>103.4</b>	96.3	90.2	91.6	91.8	92.6	92.2	93.8	93.1	103.5	94.9	<sup>3</sup> 137.0	104.9	103.1	105.3	116.8	129.7	<sup>3</sup> 120.7	
June	<b>103.3</b>	97.0	90.2	91.6	91.8	92.6	92.3	93.4	93.0	103.8	94.8	<sup>3</sup> 137.0	104.3	103.1	104.9	116.5	129.7	<sup>3</sup> 120.6	
July	<b>103.9</b>	96.9	90.2	91.5	91.8	92.5	92.3	92.8	92.9	103.5	94.5	<sup>3</sup> 137.0	111.5	103.1	110.3	116.5	129.9	120.8	
August	<b>104.0</b>	96.8	90.2	91.5	91.8	92.5	92.2	92.5	92.7	103.4	94.3	<sup>3</sup> 137.0	112.9	103.1	111.4	116.5	129.9	<sup>3</sup> 121.0	
September	<b>104.3</b>	96.7	90.2	91.4	91.9	92.6	92.2	92.3	92.6	103.4	94.2	<sup>3</sup> 137.0	116.5	103.1	114.1	116.6	129.7	<sup>3</sup> 120.9	
October	<b>104.4</b>	93.9	90.0	91.6	91.5	92.8	92.0	92.2	92.6	103.4	94.2	135.8	118.3	103.1	115.5	116.6	130.2	121.2	
Oct 99/Sep 99	<b>0.1%</b>	-2.9%	-0.2%	0.2%	-0.4%	0.2%	-0.2%	-0.1%	0.0%	0.0%	0.0%	-0.9%	1.5%	0.0%	1.2%	0.0%	0.4%	0.2%	
Oct 99/Oct 98	<b>2.6%</b>	2.1%	-0.8%	1.0%	-1.1%	0.4%	0.5%	-0.6%	0.2%	2.8%	0.3%	4.5%	18.3%	0.0%	13.7%	-0.6%	1.2%	2.6%	

<sup>1</sup> Excluding VAT

<sup>2</sup> "Other inputs" includes maintenance and repairs, services other than veterinary, imports of young/store animals and miscellaneous materials

<sup>3</sup> Revised

**Table 3 Seasonally Adjusted Agricultural Output Price Index<sup>1</sup>**

Base year 1990=100

Period	Total outputs index	Prime cattle	Cows for slaughter	Store cattle	Sheep	Pigs	Poultry	Milk	Potatoes	Vegetables	
1998	January	<b>96.6</b>	85.5	70.9	84.4	83.7	86.6	90.5	114.0	150.2	112.2
	February	<b>95.2</b>	84.2	71.1	84.3	75.3	89.6	89.9	113.0	167.0	111.2
	March	<b>95.5</b>	85.7	76.2	85.7	74.2	86.9	90.0	112.6	173.8	108.5
	April	<b>95.8</b>	84.8	78.1	86.2	70.8	83.6	89.5	113.1	209.2	110.2
	May	<b>96.7</b>	84.7	79.0	84.2	89.2	79.4	89.8	114.2	276.9	111.2
	June	<b>96.7</b>	83.8	80.9	83.8	103.0	74.3	89.7	114.7	218.3	114.0
	July	<b>96.7</b>	83.8	79.1	82.9	110.4	72.7	89.7	115.0	179.2	111.8
	August	<b>97.9</b>	82.9	80.5	81.5	99.3	68.9	90.6	115.4	221.7	115.6
	September	<b>96.0</b>	82.0	78.3	80.5	81.1	66.5	86.0	115.9	237.3	121.4
	October	<b>94.2</b>	79.0	76.2	77.3	73.5	64.2	85.1	115.9	217.9	123.8
	November	<b>92.2</b>	75.0	77.2	71.2	64.7	64.0	83.7	113.7	261.6	122.7
	December	<b>92.8</b>	75.6	70.0	72.4	63.0	63.7	92.0	114.6	286.8	123.8
1999	January	<b>90.9</b>	71.0	65.8	67.7	65.7	62.2	83.7	113.3	304.7	121.0
	February	<b>91.3</b>	74.1	61.6	71.5	75.3	59.4	84.0	113.0	313.8	121.2
	March	<b>92.4</b>	76.2	66.0	75.1	81.3	61.3	84.9	111.9	335.9	122.9
	April	<b>92.0</b>	77.7	66.3	75.9	78.0	62.3	85.4	109.9	313.3	116.8
	May	<b>90.4</b>	76.7	67.2	73.9	88.7	61.4	85.5	109.5	259.0	110.9
	June	<b>89.2</b>	76.0	68.0	72.3	91.8	62.5	83.2	110.2	161.1	101.8
	July	<b>90.8</b>	78.7	68.2	74.7	86.6	70.3	85.4	109.3	152.4	111.6
	August	<b>92.3</b>	77.3	68.0	74.1	74.9	71.6	83.3	112.1	136.0	120.9
	September	<b>92.5</b>	81.3	68.1	77.8	71.7	74.2	84.4	110.6	147.3	122.6
	October	<b>91.4</b>	79.0	63.7	75.5	70.4	71.5	84.7	111.7	125.8	122.3
Oct 99/Sep 99		<b>-1.2%</b>	-2.8%	-6.5%	-3.0%	-1.8%	-3.6%	0.4%	1.0%	-14.6%	..

<sup>1</sup> Excluding VAT  
 .. Comparison not valid

**Table 4 Seasonally Adjusted Agricultural Input Price Index<sup>1</sup>**

Base year 1990=100

Period	Total inputs index	Feeding stuffs					Fertilizers					
		Straight	Compound				All	Straight	Compound		All	
			Calf	Cattle	Pig	Poultry			NPK	PK		
1998	January	<b>103.5</b>	94.0	94.1	95.2	96.1	94.6	94.9	94.1	93.0	96.0	94.0
	February	<b>103.3</b>	93.7	94.4	94.9	95.9	94.3	94.8	93.8	93.0	95.9	94.1
	March	<b>103.4</b>	94.1	94.2	94.5	95.6	94.2	94.6	94.5	93.5	96.1	94.5
	April	<b>103.2</b>	93.8	93.9	94.7	95.4	94.0	94.5	93.9	93.4	96.0	94.2
	May	<b>102.8</b>	93.5	92.8	93.3	94.8	93.2	93.6	93.3	93.1	96.0	93.9
	June	<b>102.6</b>	93.3	92.4	92.7	94.4	93.1	93.2	93.6	93.0	96.1	94.0
	July	<b>102.6</b>	93.3	92.3	92.6	93.8	93.1	93.0	94.3	93.3	96.3	94.3
	August	<b>102.7</b>	93.5	92.0	92.3	93.5	93.2	92.8	94.1	93.2	97.4	94.3
	September	<b>102.4</b>	93.7	91.8	92.0	93.2	92.8	92.6	94.1	93.1	98.6	94.5
	October	<b>102.3</b>	93.3	91.7	92.0	93.4	93.1	92.7	93.8	92.9	100.5	94.5
	November	<b>102.0</b>	93.6	91.6	91.9	93.3	92.8	92.5	93.3	92.5	100.2	94.0
	December	<b>101.7</b>	93.8	91.0	91.6	93.1	92.4	92.3	92.7	92.1	99.9	93.6
1999	January	<b>101.9</b>	93.4	90.3	91.7	92.3	92.6	92.2	93.6	92.4	102.4	94.2
	February	<b>102.2</b>	93.4	90.4	91.6	92.1	92.8	92.0	93.9	92.7	103.8	94.9
	March	<b>102.5</b>	95.0	90.3	91.4	91.8	92.7	92.1	94.1	93.1	104.1	95.0
	April	<b>102.9</b>	95.1	90.0	91.6	91.4	92.2	91.9	93.6	93.2	103.9	95.0
	May	<b>103.0</b>	95.6	89.7	90.8	91.0	92.0	91.4	93.8	93.4	103.9	95.1
	June	<b>102.9</b>	96.0	89.4	90.4	90.7	92.0	91.3	93.9	93.4	104.2	95.2
	July	<b>103.7</b>	95.8	89.3	90.1	90.7	91.8	91.2	93.7	93.6	104.0	95.2
	August	<b>104.1</b>	95.7	89.8	90.9	91.3	92.0	91.6	93.8	93.4	103.7	95.2
	September	<b>104.6</b>	96.5	90.3	91.5	92.2	92.7	92.3	93.7	93.3	103.4	95.1
	October	<b>104.9</b>	95.2	91.0	93.0	92.5	93.5	93.2	93.1	93.1	103.3	94.7
Oct 99/Sep 99		<b>0.3%</b>	-1.3%	0.8%	1.6%	0.3%	0.9%	1.0%	-0.6%	-0.2%	-0.1%	-0.4%

<sup>1</sup> Excluding VAT

**Table 5 Selected output prices<sup>1</sup> at livestock marts**

average £ per head

Category	1990	1991	1992	1993	1994	1995	1996	1997	1998
<b>Bullocks</b>									
200-249 kg <sup>2</sup>	353	304	323	348	386	385	348	341	323
250-299 kg <sup>2</sup>	395	354	368	399	426	421	377	398	367
300-349 kg <sup>2</sup>	434	399	410	449	456	463	407	407	374
350-399 kg	477	447	456	499	516	507	443	425	390
400-449 kg	522	501	504	550	570	558	479	475	439
450-499 kg	577	559	558	603	617	609	520	512	478
500-549 kg	632	611	610	656	666	655	562	545	520
550+ kg	717	699	702	746	749	745	631	613	585
<b>Heifers</b>									
200-249 kg <sup>2</sup>	305	253	258	283	313	297	263	246	225
250-299 kg <sup>2</sup>	350	303	304	338	366	347	304	308	286
300-349 kg <sup>2</sup>	392	356	356	392	411	397	347	331	309
350-399 kg	431	405	405	441	456	443	384	373	349
400-449 kg	480	456	453	495	509	496	429	416	393
<b>Sheep <sup>2</sup></b>									
30-39 kg	32	36	31	36	38	36	46	47	37
40-49 kg	40	41	38	43	46	44	54	57	49
50-59 kg	47	47	44	46	53	52	61	66	52
<b>Pigs <sup>2</sup></b>									
15-24 kg	23	23	25	18	21	25	29	22	15
25-34 kg	31	30	31	25	27	33	36	31	23
35-44 kg	36	35	37	31	32	39	43	37	29
45-54 kg	42	39	42	36	38	45	49	42	34

<sup>1</sup> Including VAT, rounded to nearest £<sup>2</sup> Not used in the compilation of the indices

**Table 6 Selected agricultural input prices<sup>1</sup>**

average £ per tonne

Category	1990	1991	1992	1993	1994	1995	1996	1997	1998
<b>Feeding stuffs</b>									
<b>Straight</b>									
Rolled barley <sup>2</sup>	166	163	162	162	157	156	161	150	138
Barley meal	170	168	168	168	163	163	166	155	144
Soya bean meal	228	196	194	210	219	200	229	255	223
Maize meal	218	231	227	223	200	206	207	190	168
Maize flaked <sup>2</sup>	290	300	297	288	276	275	284	279	271
<b>Pig</b>									
Pig grower	213	200	200	197	199	192	207	203	187
Pig fattening meal	195	194	196	196	195	195	206	196	190
Sow breeder <sup>2</sup>	200	193	195	194	193	190	199	198	188
Sow weaner & bonham meal	208	203	206	204	202	199	210	204	198
<b>Cattle</b>									
Cattle fattening nuts & cubes 13-15% protein	170	162	163	164	165	164	171	163	154
Calf nuts & cubes 14-15% protein <sup>2</sup>	191	183	183	186	187	190	197	183	168
Dairy nuts & cubes 13-15% protein <sup>2</sup>	166	160	167	165	167	161	173	165	155
Dairy nuts & cubes 16-18% protein	174	165	166	168	170	168	176	170	160
Dairy meal 16-18% protein <sup>2</sup>	177	168	173	171	172	171	180	172	159
Calf nuts & cubes 16-18% protein	192	184	185	185	186	183	195	189	179
Calf meal 16-18% protein <sup>2</sup>	194	182	189	204	204	200	213	212	206
Milk replacer	1,272	1,176	1,210	1,267	1,290	1,308	1,351	1,324	1,318
<b>Poultry</b>									
Layer mash	217	208	205	207	207	202	210	206	205
Chick mash	248	242	243	243	241	229	237	239	235
Broiler finisher	269	260	259	263	258	246	257	251	245
Broiler starter	281	277	275	273	271	255	267	265	262
<b>Fertilizers</b>									
<b>Straight</b>									
Calcium ammonium nitrate 27.5% N	113	119	114	104	108	122	128	118	109
Urea 46% N	140	157	154	143	146	158	171	163	152
Muriate of potash 50% K	152	153	150	147	154	162	169	166	164
Granular superphosphate 16% P	194	190	189	183	188	196	201	199	199
<b>Compound</b>									
0-10-20	137	130	130	120	128	136	142	136	134
0-7-30	135	128	128	120	128	136	142	137	134
10-10-20	166	164	162	154	157	173	180	172	168
14-7-14	157	158	157	148	151	166	174	166	157
18-6-12	154	155	152	144	147	163	170	162	155
24-2.5-10	150	157	155	147	149	159	170	162	153
27-2.5-5	147	154	151	143	146	157	166	158	150

<sup>1</sup> Rounded to nearest £<sup>2</sup> Not used in the compilation of the indices

## Background Notes

**Introduction** This release presents estimates of Agricultural Input and Output Price Indices. The indices monitor trends in prices paid to farmers for their produce and in prices paid by farmers for purchases of goods and services. Preliminary annual indices, based on around nine months data, are also published each November. The methodology is harmonised throughout the EU.

Actual prices for a variety of livestock categories, milk, fertilizers and feeding stuffs are published in the quarterly CSO Statistical Bulletin.

**Methodology** The agricultural output price index numbers are intended to measure trends in the price levels of agricultural produce sold by farmers. They have been compiled on the basis of the “national farm” concept. The Laspeyres index formula, involving the use of fixed base year weights, has been used for all commodities except vegetables. Because of the highly seasonal nature of vegetables, variable monthly baskets are used.

Monthly price series are used except for seasonal products, such as seeds, where prices are only available at certain times during the year. In these cases, the monthly prices returned during the last selling period are continued unchanged until the product can be priced again.

The index prices used are after deduction of levies and exclusion of value added tax. Standardised prices are used for milk, cereals and sugar beet to ensure that products of identical quality are priced in successive periods. In the case of milk, this means pricing at a fixed butterfat content and excluding special bonuses paid in respect of some deliveries to creameries. Standardised cereal prices take account of moisture content with additional allowance made in the case of wheat for specific gravity and protein content. Sugar beet prices are standardised at a fixed sugar content. Allowance is made for subsidies paid to suppliers of agricultural inputs.

The monthly sub-indices are weighted by the value of sales off farms and the expenditure on farm inputs to derive overall monthly total output and total input indices respectively. The annual indices are weighted averages of the twelve monthly indices. The weights exclude both the value of inter-farm sales and the value of own produce consumed in farm households.

**Data sources** The indices are compiled from a wide variety of sources, including direct CSO surveys and administrative data from the Department of Agriculture, Food and Rural Development. The actual sources are described more fully in the June 1995 issue of the Statistical Bulletin.

Livestock auction mart prices are used for cattle. For sheep and pigs, representative licensed export premises prices are used. Poultry prices at livestock auction marts and approved processing premises are used. For milk, the CSO collects prices from creameries. Feeding stuffs and fertilizer prices are collected through a CSO survey of merchants and co-operatives.

**Seasonal adjustment** As many agricultural products follow a seasonal production pattern, seasonally adjusted monthly series for the total indices and selected sub-indices are also published. The use of standardised prices for some commodities reduces the seasonality of these prices.

**Rebasing** The series are normally rebased every five years. The next rebasing will set 1995 as 100. The value of sales off farms and the expenditure on farm inputs, both averaged over the three years 1994-1996, would normally be used as weights. Methodological discussions at EU level may result in a different approach being adopted with regard to weighting and pricing.

**References** Agricultural Price Indices, Preliminary Estimates, annual CSO release.  
Eurostat Statistics in Focus - Agricultural Price trends in the EU.  
CSO Statistical Bulletin, absolute agricultural prices.

**EU EU output price indices**

%

Country	Apr-Jun 1999 / Apr-Jun 1998			
	Total outputs	Cereals	Cattle	Cow's milk
<b>European Union</b>	<b>-4.1</b>	<b>-3.6</b>	<b>-3.6</b>	<b>-4.4</b>
Austria	-4.5	1.5	-5.6	-1.0
Belgium	-4.3	0.5	-3.5	-7.8
Denmark	-7.6	-1.0	-12.9	-3.3
Finland	1.3	-2.4	-1.3	-1.8
France	-3.6	-5.6	-3.1	-2.3
Germany	-5.9	-2.4	-4.8	-4.7
Greece	0.6	0.7	4.2	1.5
Ireland	-6.5	5.3	-11.0	-3.6
Italy	-5.1	-1.8	-1.3	-1.0
Luxembourg	-1.5	-7.5	0.0	-1.8
Netherlands	-11.0	-2.4	-9.4	-18.6
Portugal	5.0	0.0	-0.2	0.0
Spain	-2.0	-5.3	-3.0	-3.0
Sweden	-2.2	0.7	-14.8	-6.1
United Kingdom	-4.5	-6.4	1.8	-1.9

Source: New Cronos database, Eurostat

**EU input price indices**

%

Country	Apr-Jun 1999 / Apr-Jun 1998			
	Total inputs	Fertilizers	Plant protection products	Feeding stuffs
<b>European Union</b>	<b>-2.4</b>	<b>-3.9</b>	<b>-0.2</b>	<b>-5.8</b>
Austria	-3.7	0.2	-5.0	-17.2
Belgium	-1.1	-2.2	0.0	-5.6
Denmark	-1.9	-1.6	15.6	-9.8
Finland	-3.3	-3.0	0.1	-8.8
France	-2.4	-1.2	0.1	-9.5
Germany	-3.0	-6.8	1.3	-9.3
Greece	1.1	-2.2	3.5	-0.9
Ireland	0.1	1.1	-0.6	-2.3
Italy	-2.6	-6.0	-1.4	-2.0
Luxembourg	-1.4	-3.6	-7.7	-3.2
Netherlands	-6.3	-10.2	1.8	-9.3
Portugal	0.6	0.0	0.0	-3.4
Spain	-3.9	-7.6	-2.4	-5.7
Sweden	-1.6	-5.4	-11.7	-8.2
United Kingdom	0.0	-3.6	-3.1	-0.6

Source: New Cronos database, Eurostat