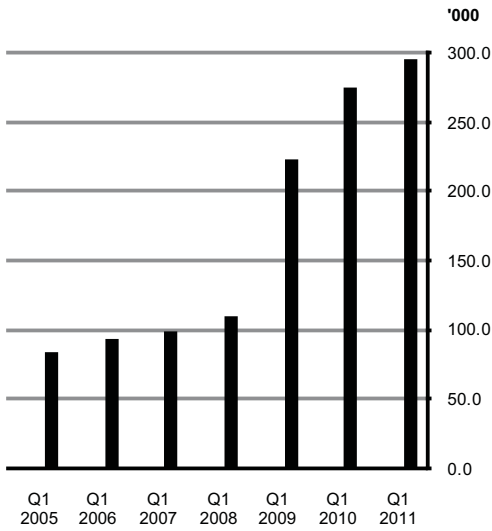




Figure 1 Numbers of persons unemployed (ILO) in the first Quarters 2005 to 2011



## Quarterly National Household Survey Unemployment Thematic Report Quarter 1 2005-2011

This report looks in more detail at the change in unemployment over the period Q1 2005 to Q1 2011, a period during which unemployment increased by over 250%. The main patterns in the timing of the increase for different groups of unemployed persons are analysed using estimates which have been previously published as well as new estimates generated from the Quarterly National Household Survey (QNHS).

### Summary of main findings

- Unemployment increased by 212,000 or 253.3% from Q1 2005 to Q1 2011, reflecting an increase in the unemployment rate from 4.2% to 14.1%. Nearly four fifths (165,600) of this increase occurred between Q1 2008 and Q1 2010. *See table 3.*
- The same pattern of increase was mainly seen for both males and females and across age groups; however some slight differences have been seen in the timing of the increase. For females only a marginal increase in unemployment was recorded up to Q1 2008 while some increases were seen for males prior to that. However, in the year to Q1 2011 the increase in female unemployment (+13,600 or +17.0%) was greater than the increase in male unemployment. Over the full period the increase in male unemployment was relatively greater than the increase in female unemployment (+296% compared with +187%). *See table 3.*
- The relatively greatest increase was seen among the 25-34 and 35-44 year old age groups. Those age groups accounted for just under half of total unemployment in Q1 2005 rising to 58% by Q1 2011 with almost identical patterns for males and females. *See table 3.*
- Average duration of unemployment initially fell from 16.0 months in Q1 2005 to 10.4 months in Q1 2009 due to an increase in short-term unemployment. Subsequently average duration of unemployment increased to 20.2 months in Q1 2011 as more people became long-term unemployed. *See table 6.*
- Analysis of the previous sector of employment for unemployed persons shows that the largest increases in unemployment occurred for persons previously employed in the *Construction* (+67,400), *Wholesale & retail* (+25,200) and *Industry* (+19,200) sectors. Combined these three sectors account for over half of the increase in unemployment between Q1 2005 and Q1 2011. *See table 11.*
- From Q1 2005 to Q1 2011 the percentage of adults aged 18-59 living in jobless households increased from 9% to 16%. *See table 15.*
- In Q1 2011 just over one in five children (21%) aged 0-17 lived in a jobless household compared with approximately one in eight (12%) in Q1 2005. *See table 16.*

Published by the Central Statistics Office, Ireland.

Ardee Road  
Dublin 6  
Ireland

Skehard Road  
Cork  
Ireland

LoCall: 1890 313 414 (ROI)  
0808 2347 581 (UK/NI)

Tel: +353-1 498 4000  
Fax: +353-1 498 4229

Tel: +353-21 453 5000  
Fax: +353-21 453 5492

Both offices may be contacted through any of these telephone numbers.

CSO on the Web: [www.cso.ie](http://www.cso.ie)

and go to

Labour Market and Earnings: Labour Market

Director General: Gerard O'Hanlon

Enquiries:

General Queries

Information Section, ext 5021  
[information@cso.ie](mailto:information@cso.ie)

© Central Statistics Office

The contents of this release may be quoted provided the source is given clearly and accurately. Reproduction for own or internal use is permitted.

For more information contact Tara Davis on 021 453 5093, Brian Ring on 021 453 5747 or Martina O'Callaghan on 021 453 5491.

## Introduction

This thematic report presents a range of information on unemployment. Some of the information is already included in the quarterly release of labour market statistics based on the Quarterly National Household Survey (QNHS). Others are not included in the regular QNHS release but in all cases the estimates presented are sourced from the QNHS.

The unemployment estimates presented are broken down by a number of characteristics of unemployed persons including:

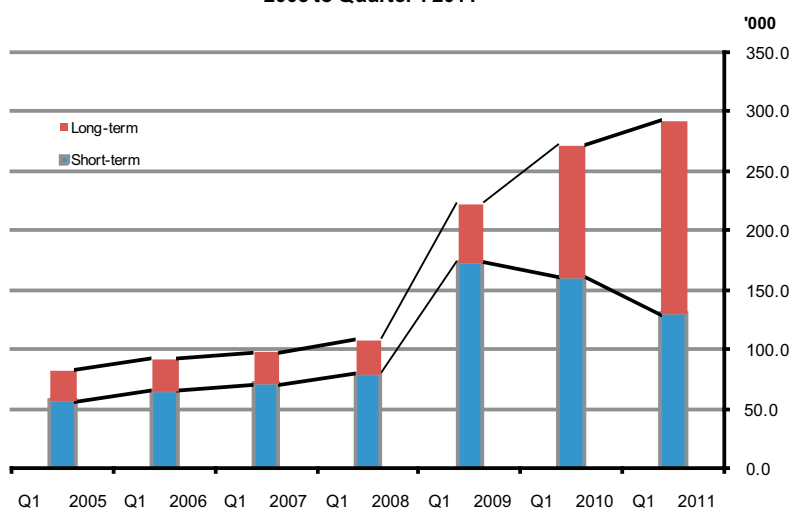
- Age and gender (Tables 1, 2, 3, 4, 5 and 6)
- Region of residence (Tables 7 and 8)
- Educational attainment (Tables 9 and 10)
- Previous sector and occupation of employment (Tables 11, 12, 13 and 14)

Estimates of number of persons unemployed and duration of unemployment are the primary focus and the periods covered are the first quarter of each year from Q1 2005 to Q1 2011. This range of information gives a good insight into changes in the pattern of unemployment from before the economic downturn up to date. The overall level of change in unemployment over the full period was an increase of 212,000 (from 83,700 in Q1 2005 to 295,700 in Q1 2011) and this is shown in figure 2 below broken down by one key aspect of unemployment, namely duration.

In addition to the above estimates information relating to the number of people living in jobless households is also presented for the first time in tables 15 and 16.

This is the first occasion the CSO has published a thematic report on unemployment. Users are invited to provide feedback, comments or suggestions for future data analysis with regards to this publication.

**Figure 2 Number of persons unemployed (ILO), by duration of unemployment, Quarter 1 2005 to Quarter 1 2011**



## Overall change in economic status of the population

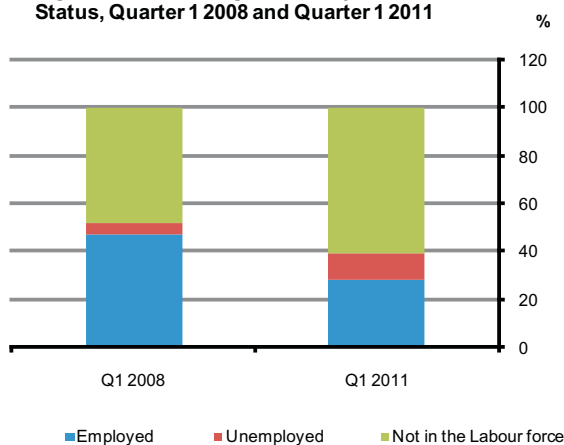
While the primary focus of this report is the change in unemployment in Ireland, to put those changes in context a range of information must be considered. For example looking at rates alone does not necessarily reflect the total loss in employment for any given group if people have also gone out of the labour force or the overall population has changed. Therefore it is worthwhile to consider changes in unemployment alongside changes in employment and the number of people outside the labour force.

- In Q1 2005 approximately 59% of all persons aged 15 and over were in employment with less than 3% unemployed and the remaining 39% not in the labour force. *See tables 1 and 2.*
- Despite huge employment growth the proportions changed relatively little between Q1 2005 and Q1 2008 as the large majority of the growth in employment and the labour force was mirrored by significant population growth with the size of the group not in the labour force not changing significantly by Q1 2008. *See tables 1 and 2.*
- Over the following 3 years the massive reduction in employment (-319,900 or -15.1%) was reflected in increases both in unemployment and the number of persons not in the labour force. *See tables 1 and 2.*
- The increase in unemployment was most significant between 2008 and 2010 with the proportion of all persons who were unemployed rising to 8% by Q1 2010 from 3% in Q1 2008. *See tables 1 and 2.*
- By Q1 2011 unemployment continued to account for 8% of all persons aged 15 and over but employment had fallen back to 51% and the proportion of persons not in the labour force had increased to 40%. *See tables 1 and 2.*
- In other terms just less than three fifths (58%) of the total drop in employment from Q1 2008 to Q1 2011 was accounted for by the increase in unemployment with close to two fifths (38%) being reflected in the increase in the number of persons not in the labour force. The remaining 4% is accounted for by the 12,100 drop in the population aged 15 and over across the period. *See tables 1 and 2.*

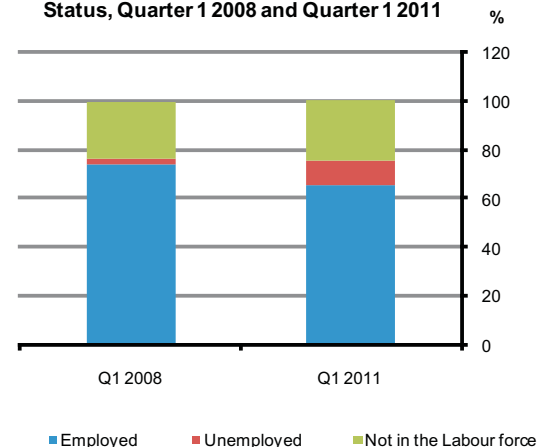
Looking at the period between Q1 2008 and Q1 2010 which showed the largest decrease in employment, different outcomes can be seen across the age groups. *See tables 1, 2 and figures 3a and 3b.*

- Between Q1 2008 and Q1 2010 the decline in employment was largest in the 25-64 year age group (-141,500). Looking at proportions, it can be seen that the majority of persons in this age group moved from employment to unemployment. In Q1 2008, 74% of persons aged 25-64 were employed while 3% were unemployed and 23% were not in the labour force. By Q1 2010 the proportion of persons aged 25-64 who were employed fell to 67%, while 9% were unemployed and those not in the labour force rose marginally to 24%. *See tables 1, 2 and figures 3a and 3b.*
- While there was an increase in unemployment for those aged 15-24 the increase in not in the labour force was more significant. In Q1 2008, 47% of those aged 15-24 were employed, while 5% were unemployed and 48% were not in the labour force. By Q1 2010 the percentage of those aged 15-24 who were employed fell to 30%, 11% were unemployed, while those not in the labour force increased to 61%. *See tables 1, 2 and figures 3a and 3b.*

**Figure 3a Persons aged 15-24 by ILO Economic Status, Quarter 1 2008 and Quarter 1 2011**



**Figure 3b Persons aged 25-64 by ILO Economic Status, Quarter 1 2008 and Quarter 1 2011**



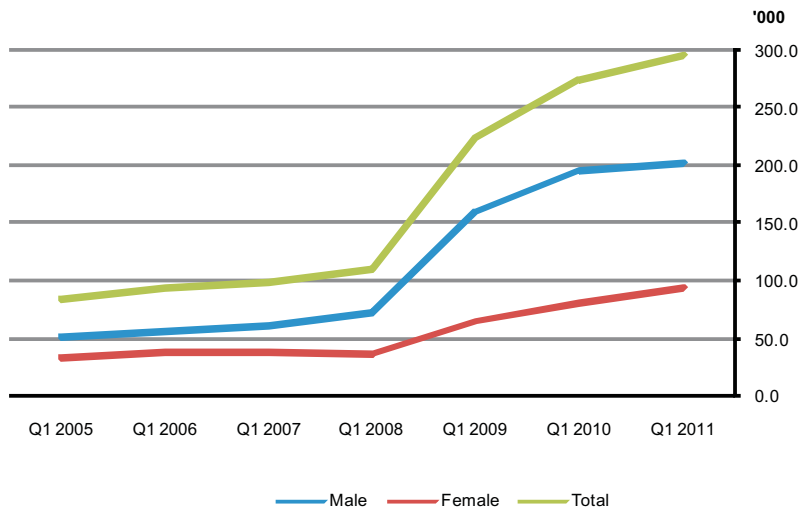
## Demographic characteristics of unemployed persons

Bearing the above points in mind regarding the movements between different statuses, the remainder of this report focuses on the main patterns in unemployment over the period. Changes in unemployment for males and females and different age groups are in turn linked to the economic sectors they worked in as discussed later in this release.

Between Q1 2005 to Q1 2011 male unemployment increased by 150,800 or 296%, while female unemployment increased by 61,100 or 187%. See table 3 and figure 4.

- In line with this increase in numbers unemployed the unemployment rate increased from 4.2% to 14.1% between Q1 2005 and Q1 2011. The male unemployment rate increased by 12.9 percentage points from 4.4% to 17.3%, while the female unemployment rate increased 6.1 percentage points from 3.9% to 10.0%. See table 4.

**Figure 4 Number of persons unemployed (ILO) by sex, Quarter 1 2005 to Quarter 1 2011**



- For males there was a relatively steady increase in unemployment over the 3 years between Q1 2005 and Q1 2008 (+22,100 or +43.3% over the 3 years with the unemployment rate increasing from 4.4% to 5.7%). Male unemployment then more than doubled between Q1 2008 and Q1 2009 (+85,300 or +117%) before increasing by a further 36,500 (+23%) in the year to Q1 2010. A comparatively low increase of 6,900 or 3.5% was recorded in the year to Q1 2011. See tables 3, 4 and figure 4.
- For females a slightly different pattern was seen. There was only a marginal increase in female unemployment between Q1 2005 and Q1 2008. As with males the sharpest increase was recorded in the year to Q1 2009 (+28,200 or +78%) followed by increases of 24% and 17% in the subsequent 2 years. See table 3 and figure 4.
- Over the full period the increase in male unemployment was relatively greater than for females (+296% compared with +187%) and as a result the proportion of unemployed persons who were males increased from 61% to 68%. See table 3.

For both males and females unemployment increased across all age groups but most heavily in the 25-34 year age group followed by the 35-44 year age group. Between them these two age groups accounted for more than 60% of the overall increase in unemployment. In proportional terms they increased from accounting for just under half total unemployment in Q1 2005 (49%) to 57% by Q1 2011. See table 3.

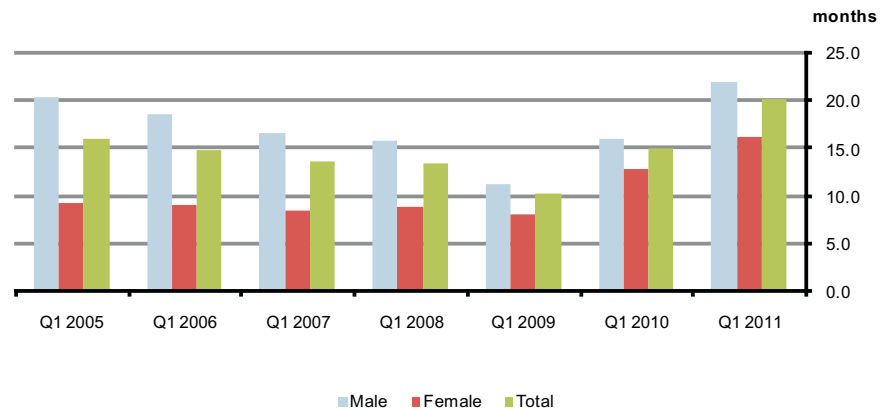
While the greatest increase in numbers unemployed was recorded among 25-34 and 35-44 year olds the highest unemployment rates are seen, and always have been seen among the 15-19 and 20-24 year age groups. This reflects the fact that the labour force in these age groups has relatively fallen over time which caused unemployment rates to increase between Q1 2009 and Q1 2011 despite only marginal changes in the numbers unemployed. See tables 3 and 4.

## Duration of unemployment

The pattern in duration of unemployment has changed across the period covered. This is most clearly seen in looking at the overall average duration of unemployment as shown in table 6.

- The average duration of unemployment increased from 16.0 months in Q1 2005 to 20.2 months in Q1 2011. *See table 6 and figure 5.*
- Average duration of unemployment fell continuously from 16.0 months in Q1 2005 to a low of 10.4 months in Q1 2009; this decline was due to the increase in short-term unemployment as the numbers of newly unemployed persons rose during 2008 and 2009 in particular. *See table 6 and figure 5.*

**Figure 5 Unemployed persons (ILO) aged 15 years and over by sex and average duration of unemployment, Quarter 1 2005 to Quarter 1 2011**



- As short-term unemployment transferred to long-term unemployment for those persons the average duration increased to 15.1 months as of Q1 2010 and 20.2 months in Q1 2011. *See table 6 and figure 5.*
- For both males and females the average duration of unemployment increases with age. The average duration of unemployment for persons aged 45 or over was 26.3 months in Q1 2011 compared with 19.8 months among 25-44 year olds and 14 months among 15-24 year olds. However quite similar patterns over time were seen for all age groups with Q1 2009 being the lowest average duration and significant increases being recorded up to Q1 2011. *See table 6.*
- This increase in duration is reflected in the numbers of persons recorded as long-term unemployed with the proportion of unemployed persons who were long-term unemployed increasing from 22% in Q1 2009 to 55% in Q1 2011 and the long term unemployment rate increasing from 2.2% to 7.8% over the same period. *See table 5 and main QNHS Q1 2011 release.*
- At NUTS3 regional level the regions which showed the largest increases in average duration of unemployment between Q1 2005 and Q1 2011 were Dublin (+8.3 months), South-West (+5.8 months) and Mid-West (+5.6 months). The region with the longest average duration in unemployment in Q1 2011 was the South-East with 23.6 months, while the Mid-East had the lowest at 15.9 months. *See table 8.*
- Between the first quarters of 2005 and 2011 unemployment increased across all levels of educational attainment. In terms of average duration of unemployment the pattern remained the same over the years from 2005 to 2011, with lower average durations of unemployment being recorded for persons with higher levels of education. In Q1 2011 the highest average duration of unemployment of 36.1 months, was recorded for those with an education attainment level of no formal education/primary. Persons who achieved a level of post leaving cert or above had an average duration of unemployment of 15.7 months. *See tables 9 and 10.*

## Previous sector and occupation of employment for unemployed persons

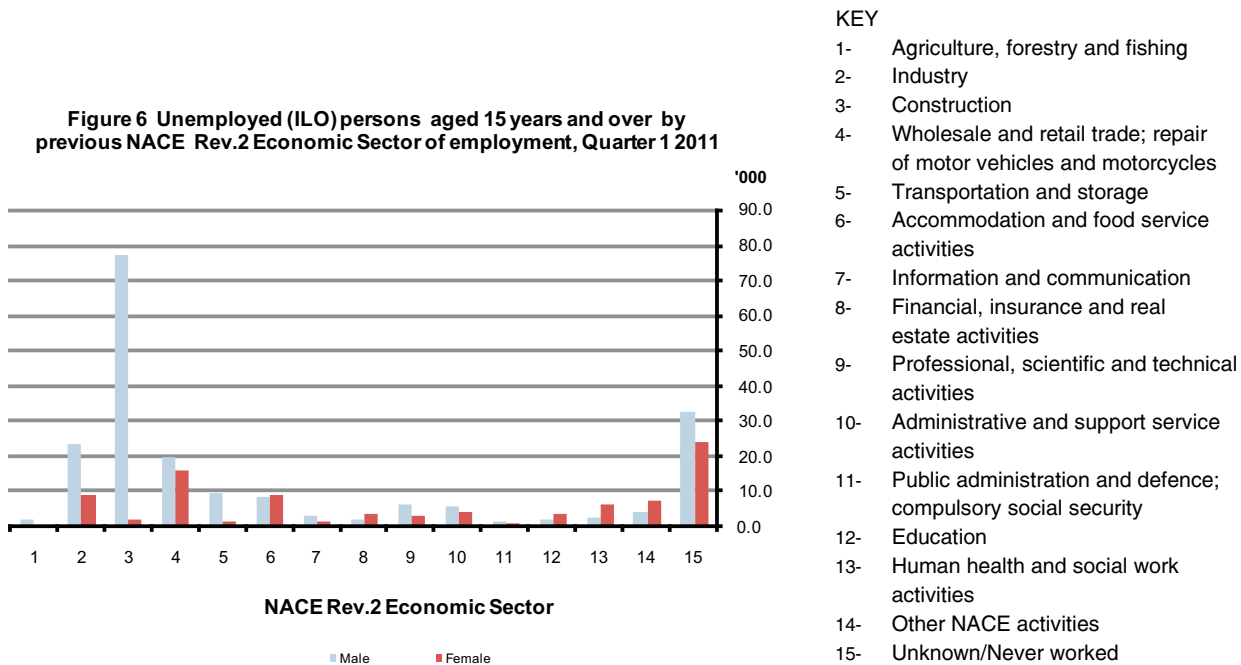
All persons in the QNHS who are not in employment are asked if they have previously worked and if so in what sector and occupation. It should be noted that this relates to their last employment which could differ from a longer term occupation or sector of employment.

In Q1 2011 9,900 (3.3%) of persons who were recorded as unemployed by the ILO criteria indicated that they were unemployed and looking for their first regular job. This number has fluctuated somewhat over time but has always been between 6,700 and 11,600 in the period covered. A further 12,600 unemployed had an 'Other' status according to their self perceived usual situation (including retired, home duties, students etc.). The remaining 273,200 (92%) indicated that they had previously worked. As of Q1 2005 this had been 73,100. See table 11.

In Q1 2011 looking at those people who were unemployed but had previously worked, the largest constituent group predictably had previously worked in the *Construction* sector (79,500). This had increased slowly up to 2008 to a level of 24,600 as of Q1 2008 before jumping to 71,000 in Q1 2009. A further increase was recorded in the year to Q1 2010 before a marginal decrease was recorded between Q1 2010 and Q1 2011. See table 11.

- People who had previously worked in *Construction* accounted for 27% of all unemployed persons as of Q1 2011; this has marginally dropped from 30% or more in Q1 2009 and Q1 2010. Among males former *Construction* sector workers account for 38% of all unemployment as of Q1 2011. See table 11.
- The next largest unemployed groups who indicated their previous sector of employment in Q1 2011 were people who had previously worked in *Wholesale and retail trade, repair of motor vehicles and motorcycles* (35,600), *Industry* (32,600) and *Accommodation and food service activities* (17,300). However for all sectors numbers unemployed had increased from levels recorded in 2008 and earlier. See table 11.
- For unemployed females the previous sector of work was more dispersed than for males the largest group being females who had worked in the *Wholesale and retail trade; repair of motor vehicles and motorcycles* (15,800 as of Q1 2011). See table 11.

By duration the trend across previous sectors of employment has been quite consistent with average duration falling in the majority of sectors up to 2009 due to the increase in short-term unemployed persons and subsequently increasing as more people became long term unemployed. The longest average durations in Q1 2011 were recorded for people who previously worked in *Industry* (23.3 months), *Administrative and support service activities* (23.2 months) and *Construction* (22.2). A higher average duration was recorded for *Agriculture* (28.7 months) but this duration is based on a lower number of persons so it is subject to a wider margin of error than the other sectors. See table 12.



As discussed in the main QNHS, occupational estimates for Q1 2011 are not available at this point. By previous occupation the largest increase in unemployment between the first quarters of 2005 and 2010 occurred in the *Craft and related* occupation group (+65,100) and as of Q1 2010 this group accounted for 27.4% of all unemployed persons (75,300). This is heavily linked to the *Construction* sector. The next largest group with a known previous occupation was the *Other* group (35,700) which is also related to the *Construction* sector. See table 13.

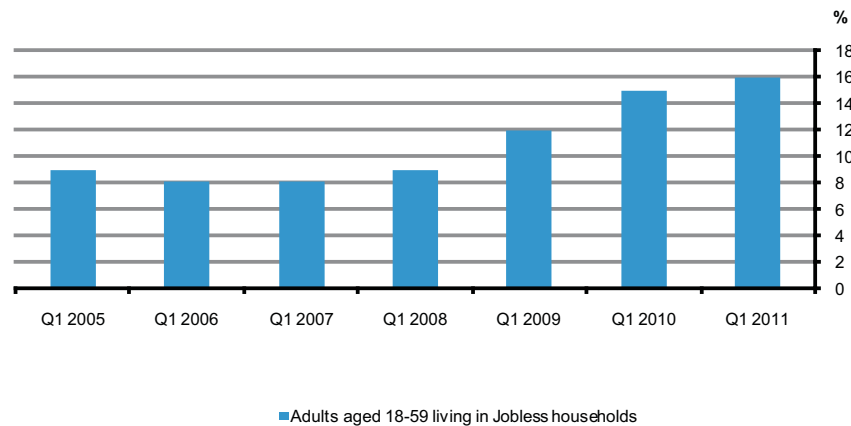
## Jobless Households

The percentage of persons aged 18-59 who live in a jobless household increased from 9% to 16% over the period from Q1 2005 to Q1 2011. Households where it is common for no person to be working have been excluded i.e. persons aged over 59 who might more typically live in households with no persons working due to retirement and persons aged 18-24 who more commonly live in households composed solely of students of the same age class.

The percentage of adult males who live in a jobless household increased from 7% to 15%, while the percentage of adult females living in jobless households increased from 10% to 17% over the same period. *See table 15 and figure 7.*

- From Q1 2005 to Q1 2011 the percentage of adults who live in a household where one person worked increased from 28% to 33%. The number of adults living in a household where two persons worked fell from 41% to 39% while the number of adults who live in a household where three or more persons worked fell from 23% to 13%. *See table 15 and figure 7.*
- The percentage of children aged 0-17 who live in a jobless household increased from 12% to 21% between the first quarters of 2005 and 2011. As with other unemployment related indicators this increase primarily occurred from Q1 2008 onwards. The corresponding reduction occurred for children living in households with 2 or more people working. This had been over 50% of all children up to Q1 2008, falling to 42% by Q1 2011. *See table 16.*

**Figure 7 Percentage of adults aged 18-59 living in jobless households, Quarter 1 2005 to Quarter 1 2011**



<b>Contents</b>	<b>Page no.</b>
Table 1 Persons aged 15 years and over classified by sex, ILO Economic Status and age group	9
Table 2 Persons aged 15 years and over classified by sex, ILO Economic Status and age group - percentages	10
Table 3 Unemployed (ILO) persons aged 15 years and over classified by sex and age group	11
Table 4 Unemployment rates (ILO) of persons aged 15 years and over classified by sex and age group	12
Table 5 Unemployed (ILO) persons aged 15 years and over classified by sex, age group and duration of unemployment	13
Table 6 Average duration of unemployment for unemployed (ILO) persons aged 15 years and over classified by sex and age group	14
Table 7 Unemployed (ILO) persons aged 15 years and over classified by sex and region	15
Table 8 Average duration of unemployment for unemployed (ILO) persons aged 15 years and over classified by sex and region	16
Table 9 Unemployed (ILO) persons aged 15-64 years classified by sex and educational attainment	17
Table 10 Average duration of unemployment for unemployed (ILO) persons aged 15-64 years classified by sex and educational attainment	17
Table 11 Unemployed (ILO) persons aged 15 years and over classified by sex and previous NACE Rev.2 Economic Sector.	18
Table 12 Average duration of unemployment for unemployed (ILO) persons aged 15 years and over classified by sex and previous NACE Rev.2 Economic Sector	19
Table 13 Unemployed (ILO) persons aged 15 years and over classified by sex and previous occupation	20
Table 14 Average duration of unemployment for unemployed (ILO) persons aged 15 years and over classified by sex and previous occupation	21
Table 15 Adults aged 18-59 years living in households classified by sex and numbers employed in household	22
Table 16 Children aged 0-17 years living in households classified by numbers employed in household	22



**Table 1 Persons aged 15 years and over classified by sex, ILO Economic Status and age group, Q1 2005 to Q1 2011**

'000

	15-24			25-64			65+		
	Employed	Unemployed	Not in labour force	Employed	Unemployed	Not in labour force	Employed	Unemployed	Not in labour force
<b>Male</b>									
Q1 2005	157.4	14.1	148.5	922.3	36.9	137.7	27.5	*	173.6
Q1 2006	165.6	16.2	139.1	966.8	39.0	138.0	28.7	*	177.5
Q1 2007	169.5	17.4	134.0	995.0	42.8	144.6	32.2	*	176.0
Q1 2008	152.3	20.1	143.9	1,011.8	52.8	152.9	34.9	*	179.0
Q1 2009	105.7	36.1	155.3	937.4	121.9	166.9	33.5	*	186.2
Q1 2010	79.0	39.4	159.9	885.4	154.8	184.1	31.8	*	195.4
Q1 2011	66.9	34.9	161.7	863.0	166.2	192.8	32.3	*	202.0
<b>Female</b>									
Q1 2005	137.1	10.4	165.2	664.5	22.3	396.2	8.4	*	248.0
Q1 2006	138.6	11.4	161.8	700.3	26.1	393.3	9.4	*	250.9
Q1 2007	144.5	10.5	158.6	737.3	27.0	392.3	10.1	*	250.8
Q1 2008	141.6	10.4	159.3	772.2	25.9	396.4	11.5	*	254.7
Q1 2009	118.6	17.8	163.3	759.6	46.5	409.4	10.7	*	261.9
Q1 2010	91.4	20.0	172.5	757.1	59.9	406.3	12.9	*	265.1
Q1 2011	80.4	21.9	161.6	749.0	71.6	416.5	12.7	*	273.1
<b>All Persons</b>									
Q1 2005	294.5	24.4	313.7	1,586.8	59.1	533.9	35.9	*	421.6
Q1 2006	304.2	27.6	300.9	1,667.1	65.1	531.3	38.1	*	428.4
Q1 2007	313.9	27.9	292.6	1,732.3	69.8	536.9	42.2	*	426.8
Q1 2008	293.8	30.6	303.2	1,784.0	78.6	549.3	46.3	*	433.7
Q1 2009	224.3	53.9	318.6	1,697.0	168.4	576.4	44.2	*	448.1
Q1 2010	170.4	59.3	332.4	1,642.5	214.7	590.3	44.8	*	460.6
Q1 2011	147.2	56.8	323.4	1,612.0	237.9	609.3	45.0	*	475.1

\* Indicates where sample occurrence is too small for estimation, while parentheses [ ] indicate results based on small numbers and are therefore subject to a wide margin of error.

**Table 2 Persons aged 15 years and over classified by sex, ILO Economic Status and age group, Q1 2005 to Q1 2011 - percentages** %

	15-24			25-64			65+		
	Employed	Unemployed	Not in labour force	Employed	Unemployed	Not in labour force	Employed	Unemployed	Not in labour force
<b>Male</b>									
Q1 2005	49	4	46	84	3	13	14	*	86
Q1 2006	52	5	43	85	3	12	14	*	86
Q1 2007	53	5	42	84	4	12	15	*	84
Q1 2008	48	6	45	83	4	13	16	*	84
Q1 2009	36	12	52	76	10	14	15	*	85
Q1 2010	28	14	57	72	13	15	14	*	86
Q1 2011	25	13	61	71	14	16	14	*	86
<b>Female</b>									
Q1 2005	44	3	53	61	2	37	3	*	97
Q1 2006	44	4	52	63	2	35	4	*	96
Q1 2007	46	3	51	64	2	34	4	*	96
Q1 2008	45	3	51	65	2	33	4	*	96
Q1 2009	40	6	54	62	4	34	4	*	96
Q1 2010	32	7	61	62	5	33	5	*	95
Q1 2011	30	8	61	61	6	34	4	*	95
<b>All Persons</b>									
Q1 2005	47	4	50	73	3	24	8	*	92
Q1 2006	48	4	48	74	3	23	8	*	92
Q1 2007	49	4	46	74	3	23	9	*	91
Q1 2008	47	5	48	74	3	23	10	*	90
Q1 2009	38	9	53	69	7	24	9	*	91
Q1 2010	30	11	59	67	9	24	9	*	91
Q1 2011	28	11	61	66	10	25	9	*	91

\* Indicates where sample occurrence is too small for estimation, while parentheses [ ] indicate results based on small numbers and are therefore subject to a wide margin of error.

**Table 3 Unemployed (ILO) persons aged 15 years and over classified by sex and age group, Q1 2005 to Q1 2011**

'000

Sex	Age Group	Q1 2005	Q1 2006	Q1 2007	Q1 2008	Q1 2009	Q1 2010	Q1 2011
<b>Males</b>	15-19	4.5	5.9	6.2	6.2	9.3	7.8	8.2
	20-24	9.6	10.4	11.3	13.9	26.8	31.6	26.7
	25-34	14.6	17.0	17.9	22.4	55.3	65.4	70.5
	35-44	10.2	9.6	12.1	13.9	33.1	44.0	45.5
	45-54	8.1	9.0	8.6	11.5	22.8	31.3	33.2
	55-59	2.6	2.6	3.1	3.7	7.6	8.0	10.9
	60-64	[1.4]	*	*	*	3.1	6.2	6.1
	65 +	*	*	*	*	*	*	*
<b>Total</b>		<b>51.0</b>	<b>55.4</b>	<b>60.5</b>	<b>73.1</b>	<b>158.4</b>	<b>194.9</b>	<b>201.8</b>
<b>Females</b>	15-19	3.2	3.6	4.0	3.4	4.9	4.9	6.5
	20-24	7.1	7.8	6.4	7.1	12.9	15.1	15.4
	25-34	9.3	11.6	12.3	11.6	22.0	26.0	32.6
	35-44	6.7	7.3	7.7	7.7	12.1	17.7	21.3
	45-54	4.1	5.1	5.3	5.0	8.7	10.3	12.4
	55-59	[1.7]	[1.6]	[1.4]	*	[2.3]	4.1	[3.7]
	60-64	*	*	*	*	*	*	*
	65 +	*	*	*	*	*	*	*
<b>Total</b>		<b>32.7</b>	<b>37.5</b>	<b>37.6</b>	<b>36.3</b>	<b>64.5</b>	<b>80.2</b>	<b>93.8</b>
<b>All persons</b>	15-19	7.7	9.4	10.2	9.6	14.3	12.6	14.7
	20-24	16.7	18.2	17.7	21.0	39.7	46.7	42.1
	25-34	23.9	28.6	30.2	34.0	77.3	91.4	103.1
	35-44	16.9	16.9	19.8	21.5	45.2	61.6	66.8
	45-54	12.2	14.1	13.8	16.5	31.5	41.6	45.6
	55-59	4.4	4.2	4.5	4.9	9.9	12.1	14.6
	60-64	[1.8]	*	[1.6]	[1.7]	4.5	7.9	7.7
	65 +	*	*	*	*	*	*	*
<b>Total</b>		<b>83.7</b>	<b>92.9</b>	<b>98.1</b>	<b>109.4</b>	<b>222.8</b>	<b>275.0</b>	<b>295.7</b>

\* Indicates where sample occurrence is too small for estimation, while parentheses [ ] indicate results based on small numbers and are therefore subject to a wide margin of error.

**Table 4 Unemployment rates (ILO) of persons aged 15 years and over classified by sex and age group, Q1 2005 to Q1 2011**

%

Sex	Age Group	Q1 2005	Q1 2006	Q1 2007	Q1 2008	Q1 2009	Q1 2010	Q1 2011
<b>Males</b>	15-19	10.7	13.3	13.8	16.0	32.5	33.3	41.3
	20-24	7.4	7.5	7.9	10.4	23.7	33.2	32.6
	25-34	4.6	5.0	5.0	6.1	15.3	19.0	21.6
	35-44	3.6	3.3	4.0	4.5	10.9	14.5	14.9
	45-54	3.6	3.9	3.6	4.8	9.3	12.7	13.3
	55-59	3.2	3.0	3.5	4.1	8.3	9.2	12.0
	60-64	2.7	1.3	2.0	2.0	5.2	10.3	10.5
	65 +	0.3	0.6	0.8	0.7	0.9	2.1	2.1
	<b>Total</b>	<b>4.4</b>	<b>4.6</b>	<b>4.8</b>	<b>5.7</b>	<b>12.8</b>	<b>16.4</b>	<b>17.3</b>
<b>Females</b>	15-19	10.1	10.8	11.6	10.6	18.3	25.9	30.4
	20-24	6.2	6.7	5.4	5.9	11.7	16.3	19.1
	25-34	3.6	4.2	4.2	3.8	7.2	8.6	10.9
	35-44	3.4	3.6	3.6	3.4	5.4	7.8	9.4
	45-54	2.6	3.1	3.0	2.7	4.7	5.4	6.4
	55-59	3.5	3.0	2.6	2.2	3.8	6.4	5.5
	60-64	1.9	1.9	1.6	1.5	4.2	5.2	4.8
	65 +	1.5	0.4	1.1	0.0	1.9	2.3	2.3
	<b>Total</b>	<b>3.9</b>	<b>4.2</b>	<b>4.0</b>	<b>3.8</b>	<b>6.8</b>	<b>8.5</b>	<b>10.0</b>
<b>All persons</b>	15-19	10.5	12.2	12.8	13.5	25.6	30.0	35.7
	20-24	6.8	7.1	6.7	8.3	17.8	24.9	25.9
	25-34	4.2	4.7	4.6	5.1	11.6	14.2	16.5
	35-44	3.5	3.4	3.8	4.1	8.6	11.6	12.6
	45-54	3.2	3.5	3.4	3.9	7.3	9.5	10.3
	55-59	3.3	3.0	3.1	3.4	6.6	8.0	9.2
	60-64	2.5	1.5	1.9	1.8	4.8	8.5	8.3
	65 +	0.6	0.6	0.9	0.5	1.1	2.1	2.2
	<b>Total</b>	<b>4.2</b>	<b>4.4</b>	<b>4.5</b>	<b>4.9</b>	<b>10.2</b>	<b>12.9</b>	<b>14.1</b>

**Table 5 Unemployed (ILO) persons aged 15 years and over classified by sex, age group and duration of unemployment, Q1 2005 to Q1 2011**

'000

Duration	Age Group	Q1 2005	Q1 2006	Q1 2007	Q1 2008	Q1 2009	Q1 2010	Q1 2011
<b>Males</b>								
less than or equal to 6 months	15-24	7.2	9.0	10.8	12.8	23.1	13.8	12.0
	25-44	10.4	12.2	14.5	19.5	52.7	39.1	27.5
	45 +	4.5	4.3	5.7	7.4	16.6	12.9	10.7
	<b>Total</b>	<b>22.1</b>	<b>25.5</b>	<b>31.0</b>	<b>39.7</b>	<b>92.4</b>	<b>65.8</b>	<b>50.2</b>
7 to 12 months	15-24	2.5	3.4	2.7	[2.9]	5.8	8.5	5.8
	25-44	3.6	4.1	5.1	5.5	14.8	22.4	15.7
	45 +	2.3	2.3	[2.1]	[1.9]	6.7	9.2	7.4
	<b>Total</b>	<b>8.5</b>	<b>9.8</b>	<b>9.9</b>	<b>10.3</b>	<b>27.3</b>	<b>40.1</b>	<b>28.9</b>
1 year and over	15-24	4.2	3.7	3.8	4.5	7.2	16.7	16.7
	25-44	10.6	10.2	10.4	10.9	20.8	47.3	71.7
	45 +	5.4	5.9	5.3	7.3	10.4	24.0	32.4
	<b>Total</b>	<b>20.1</b>	<b>19.8</b>	<b>19.4</b>	<b>22.7</b>	<b>38.4</b>	<b>88.0</b>	<b>120.8</b>
Not stated	15-24	*	*	*	*	*	*	*
	25-44	*	*	*	*	*	*	*
	45 +	*	*	*	*	*	*	*
	<b>Total</b>	*	*	*	*	*	*	*
Total	15-24	14.1	16.2	17.4	20.1	36.1	39.4	34.9
	25-44	24.8	26.6	30.0	36.3	88.5	109.4	116.0
	45 +	12.2	12.6	13.1	16.7	33.8	46.1	50.9
	<b>Total</b>	<b>51.0</b>	<b>55.4</b>	<b>60.5</b>	<b>73.1</b>	<b>158.4</b>	<b>194.9</b>	<b>201.8</b>
<b>Females</b>								
less than or equal to 6 months	15-24	6.4	7.2	7.0	6.9	11.4	8.4	9.3
	25-44	10.3	12.1	13.3	13.5	23.5	20.9	20.7
	45 +	3.4	4.3	4.0	3.7	6.4	7.3	5.8
	<b>Total</b>	<b>20.1</b>	<b>23.6</b>	<b>24.3</b>	<b>24.0</b>	<b>41.3</b>	<b>36.7</b>	<b>35.9</b>
7 to 12 months	15-24	[2.0]	[2.5]	[2.0]	*	[3.4]	3.9	4.2
	25-44	[2.5]	3.2	3.3	[2.7]	6.4	10.5	8.8
	45 +	[1.5]	*	*	*	[2.5]	[3.2]	*
	<b>Total</b>	<b>6.0</b>	<b>6.9</b>	<b>6.4</b>	<b>5.5</b>	<b>12.3</b>	<b>17.6</b>	<b>15.0</b>
1 year and over	15-24	[1.9]	[1.6]	*	*	[2.8]	6.9	8.1
	25-44	3.2	3.6	3.4	[2.9]	4.2	12.1	23.6
	45 +	[1.5]	[1.8]	[1.9]	[2.0]	3.7	5.6	10.3
	<b>Total</b>	<b>6.6</b>	<b>7.0</b>	<b>6.8</b>	<b>6.6</b>	<b>10.6</b>	<b>24.6</b>	<b>42.0</b>
Not stated	15-24	*	*	*	*	*	*	*
	25-44	*	*	*	*	*	*	*
	45 +	*	*	*	*	*	*	*
	<b>Total</b>	*	*	*	*	*	*	*
Total	15-24	10.4	11.4	10.5	10.4	17.8	20.0	21.9
	25-44	16.0	18.9	20.0	19.2	34.0	43.7	53.8
	45 +	6.4	7.3	7.2	6.7	12.6	16.5	18.1
	<b>Total</b>	<b>32.7</b>	<b>37.5</b>	<b>37.6</b>	<b>36.3</b>	<b>64.5</b>	<b>80.2</b>	<b>93.8</b>
<b>All persons</b>								
less than or equal to 6 months	15-24	13.6	16.3	17.8	19.7	34.5	22.2	21.3
	25-44	20.7	24.3	27.8	33.0	76.2	60.0	48.3
	45 +	7.9	8.6	9.8	11.1	23.0	20.2	16.5
	<b>Total</b>	<b>42.2</b>	<b>49.2</b>	<b>55.3</b>	<b>63.7</b>	<b>133.7</b>	<b>102.5</b>	<b>86.0</b>
7 to 12 months	15-24	4.5	5.9	4.6	4.7	9.3	12.4	10.0
	25-44	6.2	7.3	8.4	8.3	21.2	32.9	24.5
	45 +	3.8	3.5	3.3	2.9	9.1	12.4	9.3
	<b>Total</b>	<b>14.5</b>	<b>16.7</b>	<b>16.3</b>	<b>15.8</b>	<b>39.6</b>	<b>57.7</b>	<b>43.8</b>
1 year and over	15-24	6.1	5.3	5.2	6.2	10.0	23.6	24.8
	25-44	13.8	13.8	13.8	13.8	25.0	59.4	95.3
	45 +	6.9	7.6	7.3	9.3	14.1	29.5	42.8
	<b>Total</b>	<b>26.7</b>	<b>26.8</b>	<b>26.3</b>	<b>29.3</b>	<b>49.0</b>	<b>112.6</b>	<b>162.8</b>
Not stated	15-24	*	*	*	*	*	*	*
	25-44	*	*	*	*	*	*	*
	45 +	*	*	*	*	*	*	*
	<b>Total</b>	*	*	*	*	*	[2.3]	[2.9]
Total	15-24	24.4	27.6	27.9	30.6	53.9	59.3	56.8
	25-44	40.8	45.5	49.9	55.5	122.5	153.1	169.9
	45 +	18.6	19.8	20.3	23.4	46.4	62.6	69.0
	<b>Total</b>	<b>83.7</b>	<b>92.9</b>	<b>98.1</b>	<b>109.4</b>	<b>222.8</b>	<b>275.0</b>	<b>295.7</b>

\* Indicates where sample occurrence is too small for estimation, while parentheses [ ] indicate results based on small numbers and are therefore subject to a wide margin of error.

**Table 6 Average duration of unemployment for unemployed (ILO) persons aged 15 years and over classified by sex and age group, Q1 2005 to Q1 2011**

Age groups	months						
	Q1 2005	Q1 2006	Q1 2007	Q1 2008	Q1 2009	Q1 2010	Q1 2011
<b>Males</b>							
15-24	11.2	8.6	8.3	9.2	7.9	12.1	15.0
25-44	20.5	19.7	17.4	14.1	10.6	15.5	21.6
45 +	30.8	29.5	26.2	27.5	16.4	20.8	28.1
<b>Total</b>	<b>20.4</b>	<b>18.7</b>	<b>16.7</b>	<b>15.8</b>	<b>11.3</b>	<b>16.0</b>	<b>22.1</b>
<b>Females</b>							
15-24	8.1	6.8	6.7	7.5	6.7	11.1	12.5
25-44	8.0	9.1	7.7	7.8	6.8	11.7	16.0
45 +	14.4	12.7	14.2	14.2	14.1	18.0	21.2
<b>Total</b>	<b>9.3</b>	<b>9.1</b>	<b>8.6</b>	<b>8.9</b>	<b>8.2</b>	<b>12.8</b>	<b>16.2</b>
<b>All persons</b>							
15-24	9.9	7.8	7.7	8.6	7.5	11.8	14.0
25-44	15.6	15.3	13.5	11.9	9.6	14.4	19.8
45 +	25.2	23.3	22.0	23.7	15.8	20.1	26.3
<b>Total</b>	<b>16.0</b>	<b>14.8</b>	<b>13.6</b>	<b>13.5</b>	<b>10.4</b>	<b>15.1</b>	<b>20.2</b>

**Table 7 Unemployed (ILO) persons aged 15 years and over classified by sex and region,  
Q1 2005 to Q1 2011**

'000

Region (NUTS3)	Sex	Q1 2005	Q1 2006	Q1 2007	Q1 2008	Q1 2009	Q1 2010	Q1 2011
<b>Border</b>								
	Male	6.0	5.4	8.2	9.2	18.8	17.0	18.5
	Female	3.8	5.2	4.9	4.3	7.4	6.6	9.0
	<b>Total</b>	<b>9.9</b>	<b>10.6</b>	<b>13.1</b>	<b>13.6</b>	<b>26.2</b>	<b>23.6</b>	<b>27.5</b>
<b>Midland</b>								
	Male	2.5	2.4	2.9	4.5	10.7	13.9	14.5
	Female	[1.4]	[1.6]	[2.5]	*	[3.9]	4.9	5.4
	<b>Total</b>	<b>3.9</b>	<b>4.0</b>	<b>5.3</b>	<b>6.4</b>	<b>14.6</b>	<b>18.9</b>	<b>20.0</b>
<b>West</b>								
	Male	4.6	4.6	4.5	7.6	15.0	19.9	22.1
	Female	3.3	4.6	3.4	4.2	8.8	8.3	11.5
	<b>Total</b>	<b>8.0</b>	<b>9.2</b>	<b>7.9</b>	<b>11.8</b>	<b>23.8</b>	<b>28.3</b>	<b>33.6</b>
<b>Dublin</b>								
	Male	16.1	19.0	19.3	21.2	40.7	47.1	50.4
	Female	8.5	10.1	9.2	9.7	14.9	19.8	23.2
	<b>Total</b>	<b>24.7</b>	<b>29.1</b>	<b>28.6</b>	<b>30.9</b>	<b>55.6</b>	<b>66.9</b>	<b>73.5</b>
<b>Mid-East</b>								
	Male	3.6	4.9	5.3	6.7	17.3	23.6	23.0
	Female	3.0	3.2	4.3	[2.6]	6.9	11.2	10.5
	<b>Total</b>	<b>6.6</b>	<b>8.1</b>	<b>9.6</b>	<b>9.3</b>	<b>24.2</b>	<b>34.8</b>	<b>33.5</b>
<b>Mid-West</b>								
	Male	5.1	4.4	6.4	6.0	14.8	19.4	19.0
	Female	3.1	3.5	3.9	3.5	5.7	6.5	9.0
	<b>Total</b>	<b>8.2</b>	<b>7.9</b>	<b>10.4</b>	<b>9.5</b>	<b>20.4</b>	<b>25.9</b>	<b>28.0</b>
<b>South-East</b>								
	Male	7.0	8.3	6.7	8.7	19.2	28.0	26.5
	Female	4.5	4.8	4.7	5.0	7.4	11.9	12.5
	<b>Total</b>	<b>11.5</b>	<b>13.1</b>	<b>11.4</b>	<b>13.7</b>	<b>26.6</b>	<b>39.9</b>	<b>39.0</b>
<b>South-West</b>								
	Male	6.0	6.3	7.3	9.1	21.9	25.9	27.8
	Female	5.0	4.6	4.6	5.2	9.4	11.0	12.8
	<b>Total</b>	<b>11.0</b>	<b>10.9</b>	<b>11.9</b>	<b>14.3</b>	<b>31.3</b>	<b>36.8</b>	<b>40.7</b>
<b>Total</b>								
	Male	51.0	55.4	60.5	73.1	158.4	194.9	201.8
	Female	32.7	37.5	37.6	36.3	64.5	80.2	93.8
	<b>Total</b>	<b>83.7</b>	<b>92.9</b>	<b>98.1</b>	<b>109.4</b>	<b>222.8</b>	<b>275.0</b>	<b>295.7</b>

\* Indicates where sample occurrence is too small for estimation, while parentheses [ ] indicate results based on small numbers and are therefore subject to a wide margin of error.

**Table 8 Average duration of unemployment for unemployed (ILO) persons aged 15 years and over classified by sex and region, Q1 2005 to Q1 2011**

		months						
Region (NUTS3)	Sex	Q1 2005	Q1 2006	Q1 2007	Q1 2008	Q1 2009	Q1 2010	Q1 2011
<b>Border</b>								
	Male	28.5	22.6	23.0	17.6	12.2	15.5	22.1
	Female	8.9	10.7	6.9	7.5	8.3	24.1	15.2
	<b>Total</b>	<b>20.9</b>	<b>16.8</b>	<b>16.9</b>	<b>14.4</b>	<b>11.1</b>	<b>17.9</b>	<b>19.8</b>
<b>Midland</b>								
	Male	22.0	14.9	15.7	17.3	9.7	13.0	19.3
	Female	[8.8]	[10.8]	[15.3]	*	[8.4]	11.6	19.1
	<b>Total</b>	<b>17.1</b>	<b>13.3</b>	<b>15.5</b>	<b>14.9</b>	<b>9.4</b>	<b>12.7</b>	<b>19.2</b>
<b>West</b>								
	Male	25.5	22.6	14.3	14.6	10.7	14.2	22.0
	Female	15.0	9.8	11.1	10.4	8.9	11.5	16.0
	<b>Total</b>	<b>21.1</b>	<b>16.2</b>	<b>12.9</b>	<b>13.1</b>	<b>10.0</b>	<b>13.4</b>	<b>20.0</b>
<b>Dublin</b>								
	Male	15.3	16.0	15.5	12.7	11.1	17.3	23.1
	Female	6.3	6.7	5.2	5.4	6.3	13.0	14.9
	<b>Total</b>	<b>12.2</b>	<b>12.8</b>	<b>12.2</b>	<b>10.4</b>	<b>9.8</b>	<b>16.0</b>	<b>20.5</b>
<b>Mid-East</b>								
	Male	14.9	16.2	14.7	16.4	8.5	14.6	17.2
	Female	7.1	10.6	8.2	[11.2]	6.5	10.0	13.0
	<b>Total</b>	<b>11.3</b>	<b>14.0</b>	<b>11.8</b>	<b>15.0</b>	<b>7.9</b>	<b>13.1</b>	<b>15.9</b>
<b>Mid-West</b>								
	Male	20.1	18.1	12.9	17.4	10.6	14.9	23.4
	Female	9.6	8.2	10.2	12.9	10.1	10.9	18.2
	<b>Total</b>	<b>16.1</b>	<b>13.7</b>	<b>11.9</b>	<b>15.8</b>	<b>10.5</b>	<b>13.9</b>	<b>21.7</b>
<b>South-East</b>								
	Male	25.9	21.0	18.6	19.6	13.4	19.4	25.3
	Female	12.5	8.8	9.4	9.6	7.4	13.9	20.1
	<b>Total</b>	<b>20.7</b>	<b>16.5</b>	<b>14.8</b>	<b>15.9</b>	<b>11.7</b>	<b>17.7</b>	<b>23.6</b>
<b>South-West</b>								
	Male	18.5	21.0	17.8	16.5	12.7	15.8	22.3
	Female	9.1	11.1	10.2	10.7	11.1	10.4	15.3
	<b>Total</b>	<b>14.3</b>	<b>16.9</b>	<b>14.8</b>	<b>14.4</b>	<b>12.2</b>	<b>14.2</b>	<b>20.1</b>
<b>Total</b>								
	Male	20.4	18.7	16.7	15.8	11.3	16.0	22.1
	Female	9.3	9.1	8.6	8.9	8.2	12.8	16.2
	<b>Total</b>	<b>16.0</b>	<b>14.8</b>	<b>13.6</b>	<b>13.5</b>	<b>10.4</b>	<b>15.1</b>	<b>20.2</b>

\* Indicates where sample occurrence is too small for estimation, while parentheses [ ] indicate results based on small numbers and are therefore subject to a wide margin of error.



**Table 9 Unemployed (ILO) persons aged 15-64 years classified by sex and educational attainment, Q1 2005 to Q1 2011**

Educational attainment	'000						
	Q1 2005	Q1 2006	Q1 2007	Q1 2008	Q1 2009	Q1 2010	Q1 2011
<b>Males</b>							
No formal education/primary	13.3	11.7	12.4	12.9	18.5	21.4	22.5
Lower secondary	14.4	14.6	15.9	20.9	38.9	47.0	48.6
Higher secondary	11.1	13.2	15.3	19.6	45.0	51.6	53.9
Post leaving cert and above	10.8	13.0	13.6	17.0	48.5	67.8	68.8
Not stated	*	[2.6]	[3.0]	*	7.1	6.5	7.3
<b>Total</b>	<b>50.9</b>	<b>55.2</b>	<b>60.3</b>	<b>72.9</b>	<b>158.1</b>	<b>194.2</b>	<b>201.1</b>
<b>Females</b>							
No formal education/primary	3.7	4.0	4.2	2.8	3.3	4.0	4.9
Lower secondary	7.3	6.7	7.9	6.7	8.6	10.5	13.4
Higher secondary	9.5	12.4	10.4	11.7	20.3	23.5	28.1
Post leaving cert and above	11.3	12.9	13.4	13.5	28.9	39.4	44.3
Not stated	*	*	*	*	[3.2]	[2.6]	[2.8]
<b>Total</b>	<b>32.6</b>	<b>37.5</b>	<b>37.5</b>	<b>36.3</b>	<b>64.2</b>	<b>79.8</b>	<b>93.5</b>
<b>All persons</b>							
No formal education/primary	17.0	15.7	16.7	15.7	21.8	25.3	27.4
Lower secondary	21.7	21.3	23.8	27.6	47.5	57.4	62.1
Higher secondary	20.6	25.7	25.8	31.3	65.3	75.1	82.0
Post leaving cert and above	22.1	25.9	27.0	30.5	77.4	107.1	113.1
Not stated	[2.2]	4.1	4.5	4.2	10.3	9.1	10.1
<b>Total</b>	<b>83.5</b>	<b>92.7</b>	<b>97.7</b>	<b>109.2</b>	<b>222.3</b>	<b>274.0</b>	<b>294.6</b>

\* Indicates where sample occurrence is too small for estimation, while parentheses [ ] indicate results based on small numbers and are therefore subject to a wide margin of error.

**Table 10 Average duration of unemployment for unemployed (ILO) persons aged 15-64 years classified by sex and educational attainment, Q1 2005 to Q1 2011**

Educational attainment	months						
	Q1 2005	Q1 2006	Q1 2007	Q1 2008	Q1 2009	Q1 2010	Q1 2011
<b>Males</b>							
No formal education/primary	36.2	36.4	31.2	34.7	22.6	29.2	38.2
Lower secondary	20.0	18.1	16.5	17.6	14.0	18.3	26.8
Higher secondary	14.7	11.9	10.4	8.8	8.6	13.6	17.5
Post leaving cert and above	8.7	9.9	11.6	9.2	8.1	12.1	16.6
Not stated	*	[21.3]	[12.5]	*	5.8	16.9	26.9
<b>Total</b>	<b>20.4</b>	<b>18.7</b>	<b>16.7</b>	<b>15.9</b>	<b>11.3</b>	<b>16.0</b>	<b>22.1</b>
<b>Females</b>							
No formal education/primary	17.0	17.4	15.9	18.3	16.2	19.6	26.2
Lower secondary	9.9	12.8	11.9	11.1	14.5	15.5	18.7
Higher secondary	9.0	7.1	7.1	8.4	7.5	11.1	16.1
Post leaving cert and above	6.9	7.0	6.1	6.2	6.2	10.9	14.3
Not stated	*	*	*	*	[5.3]	[13.5]	[15.2]
<b>Total</b>	<b>9.3</b>	<b>9.1</b>	<b>8.7</b>	<b>8.9</b>	<b>8.2</b>	<b>12.0</b>	<b>16.1</b>
<b>All persons</b>							
No formal education/primary	32.0	31.6	27.3	31.8	21.6	27.7	36.1
Lower secondary	16.6	16.4	15.0	16.0	14.1	17.8	25.1
Higher secondary	12.1	9.6	9.1	8.6	8.3	12.8	17.0
Post leaving cert and above	7.8	8.4	8.9	7.9	7.4	11.7	15.7
Not stated	[8.9]	15.5	10.2	6.7	5.6	15.9	23.7
<b>Total</b>	<b>16.1</b>	<b>14.8</b>	<b>13.6</b>	<b>13.5</b>	<b>10.4</b>	<b>14.9</b>	<b>20.2</b>

\* Indicates where sample occurrence is too small for estimation, while parentheses [ ] indicate results based on small numbers and are therefore subject to a wide margin of error.

**Table 11 Unemployed (ILO) persons aged 15 years and over classified by sex and previous NACE Rev. 2 Economic Sector, Q1 2005 to Q1 2011**

	'000						
Previous NACE Rev. 2 Economic Sector	Q1 2005	Q1 2006	Q1 2007	Q1 2008	Q1 2009	Q1 2010	Q1 2011
<b>Males</b>							
A. Agriculture, forestry and fishing	*	*	*	*	[2.1]	[2.3]	*
B-E. Industry	9.5	8.9	9.5	11.4	23.0	28.7	23.5
F. Construction	11.9	13.7	16.3	24.2	69.1	81.4	77.1
G. Wholesale & Retail trade; Repair of motor vehicles and motorcycles	4.4	4.8	6.4	6.9	15.1	18.8	19.8
H. Transportation and Storage	[2.2]	[2.2]	[2.7]	[3.0]	6.0	7.7	9.8
I. Accommodation & food service activities	2.8	[2.9]	3.6	3.8	6.8	6.0	8.4
J. Information & communication	*	*	*	*	[3.1]	4.6	[3.2]
K-L. Financial, insurance and real estate activities	*	*	*	*	*	*	*
M. Professional, scientific and technical activities	*	*	*	*	5.1	6.6	6.3
N. Administrative and support service activities	2.5	[2.1]	[2.6]	3.9	5.1	7.5	5.9
O. Public administration and defence; compulsory social security	*	*	*	*	*	*	*
P. Education	*	*	*	*	*	*	*
Q. Human health and social work activities	*	*	*	*	[2.2]	*	*
R-U. Other NACE activities	[2.5]	[2.0]	[1.7]	*	[2.9]	5.0	4.3
Unknown/Never worked	9.7	12.6	11.1	10.4	14.1	20.1	32.7
<i>of which</i> <sup>1</sup> : Looking for first regular job	4.1	5.6	5.3	4.6	5.2	7.6	5.6
Unemployed having previously worked	4.3	4.9	4.0	4.7	6.4	9.7	22.2
Other	*	[2.2]	[1.8]	*	[2.5]	[2.8]	4.8
<b>Total males</b>	<b>51.0</b>	<b>55.4</b>	<b>60.5</b>	<b>73.1</b>	<b>158.4</b>	<b>194.9</b>	<b>201.8</b>
<b>Females</b>							
A. Agriculture, forestry and fishing	*	*	*	*	*	*	*
B-E. Industry	3.8	4.5	4.8	4.6	6.5	8.8	9.0
F. Construction	*	*	*	*	*	[2.1]	*
G. Wholesale & Retail trade; Repair of motor vehicles and motorcycles	6.0	7.3	6.4	7.0	12.6	14.8	15.8
H. Transportation and Storage	*	*	*	*	*	*	*
I. Accommodation & food service activities	3.6	4.4	3.0	4.4	7.2	7.6	8.9
J. Information & communication	*	*	*	*	*	[2.5]	*
K-L. Financial, insurance and real estate activities	*	*	*	*	[2.2]	[2.8]	[3.7]
M. Professional, scientific and technical activities	*	*	*	*	[3.2]	4.0	[3.0]
N. Administrative and support service activities	[1.6]	[1.6]	[2.3]	[2.2]	[3.4]	4.2	4.2
O. Public administration and defence; compulsory social security	*	*	*	*	*	*	*
P. Education	[1.6]	[2.3]	[2.0]	[2.0]	4.0	[3.3]	[3.7]
Q. Human health and social work activities	3.2	3.2	3.0	4.1	5.5	8.2	6.5
R-U. Other NACE activities	[2.0]	[2.0]	[2.9]	[2.4]	4.2	6.0	7.6
Unknown/Never worked	6.2	7.7	8.5	5.3	9.1	12.5	24.3
<i>of which</i> <sup>1</sup> : Looking for first regular job	2.7	2.9	3.3	[2.1]	3.3	4.0	4.3
Unemployed having previously worked	*	*	[2.1]	*	[2.2]	4.4	12.2
Other	2.6	3.5	3.2	[1.8]	3.6	4.0	7.8
<b>Total females</b>	<b>32.7</b>	<b>37.5</b>	<b>37.6</b>	<b>36.3</b>	<b>64.5</b>	<b>80.2</b>	<b>93.8</b>
<b>All persons</b>							
A. Agriculture, forestry and fishing	*	*	[1.8]	*	[2.4]	[2.6]	[2.7]
B-E. Industry	13.4	13.3	14.4	16.1	29.5	37.5	32.6
F. Construction	12.1	14.1	16.7	24.6	71.0	83.5	79.5
G. Wholesale & Retail trade; Repair of motor vehicles and motorcycles	10.4	12.1	12.8	13.9	27.8	33.7	35.6
H. Transportation and Storage	2.8	[2.7]	3.0	3.5	7.4	9.6	11.4
I. Accommodation & food service activities	6.3	7.3	6.6	8.2	13.9	13.6	17.3
J. Information & communication	[2.2]	[2.8]	[2.5]	[2.0]	4.9	7.1	4.8
K-L. Financial, insurance and real estate activities	[2.0]	[1.8]	[1.8]	*	3.8	5.2	5.8
M. Professional, scientific and technical activities	[1.8]	[1.6]	[2.1]	[3.5]	8.2	10.6	9.4
N. Administrative and support service activities	4.1	3.8	4.9	6.1	8.4	11.7	10.2
O. Public administration and defence; compulsory social security	*	*	*	*	[2.4]	[2.1]	[2.9]
P. Education	[2.5]	3.1	[2.9]	[3.0]	5.0	4.7	5.7
Q. Human health and social work activities	3.8	3.7	3.5	4.8	7.7	9.6	9.0
R-U. Other NACE activities	4.5	4.1	4.6	4.0	7.2	11.0	11.8
Unknown/Never worked	15.9	20.3	19.6	15.7	23.3	32.5	56.9
<i>of which</i> <sup>1</sup> : Looking for first regular job	6.7	8.4	8.5	6.7	8.5	11.6	9.9
Unemployed having previously worked	5.2	6.2	6.1	6.0	8.6	14.1	34.4
Other	3.9	5.7	4.9	3.0	6.1	6.8	12.6
<b>Total persons</b>	<b>83.7</b>	<b>92.9</b>	<b>98.1</b>	<b>109.4</b>	<b>222.8</b>	<b>275.0</b>	<b>295.7</b>

<sup>1</sup> Unknown categories broken down by Principal Economic Status (PES)

\* Indicates where sample occurrence is too small for estimation, while parentheses [ ] indicate results based on small numbers and are therefore subject to a wide margin of error.

**Table 12 Average duration of unemployment for unemployed (ILO) persons aged 15 years and over classified by sex and previous NACE Rev. 2 Economic Sector, Q1 2005 to Q1 2011** months

Previous NACE Rev. 2 Economic Sector	Q1 2005	Q1 2006	Q1 2007	Q1 2008	Q1 2009	Q1 2010	Q1 2011
<b>Males</b>							
A. Agriculture, forestry and fishing	*	*	*	*	[11.3]	[21.4]	*
B-E. Industry	23.6	17.8	17.8	16.1	13.6	16.7	24.4
F. Construction	18.5	17.6	15.0	13.6	8.6	15.0	22.4
G. Wholesale & Retail trade; Repair of motor vehicles and motorcycles	22.6	16.9	14.0	14.5	10.3	13.3	19.5
H. Transportation and Storage	[13.7]	[9.7]	[19.7]	[15.2]	14.8	19.0	20.6
I. Accommodation & food service activities	10.5	[12.1]	10.1	15.9	11.1	12.3	16.5
J. Information & communication	*	*	*	*	[7.4]	8.6	[22.3]
K-L. Financial, insurance and real estate activities	*	*	*	*	*	*	*
M. Professional, scientific and technical activities	*	*	*	*	6.9	11.8	14.5
N. Administrative and support service activities	17.4	[14.8]	[14.7]	25.9	11.9	15.2	24.8
O. Public administration and defence; compulsory social security	*	*	*	*	*	*	*
P. Education	*	*	*	*	*	*	*
Q. Human health and social work activities	*	*	*	*	[20.7]	*	*
R-U. Other NACE activities	[15.4]	[15.1]	[19.4]	*	[14.5]	14.2	23.7
Unknown	27.6	25.2	22.1	21.0	20.5	24.6	25.5
<b>Total males</b>	<b>20.4</b>	<b>18.7</b>	<b>16.7</b>	<b>15.8</b>	<b>11.3</b>	<b>16.0</b>	<b>22.1</b>
<b>Females</b>							
A. Agriculture, forestry and fishing	*	*	*	*	*	*	*
B-E. Industry	8.7	8.1	11.4	8.6	8.5	9.9	20.5
F. Construction	*	*	*	*	*	[8.6]	*
G. Wholesale & Retail trade; Repair of motor vehicles and motorcycles	8.8	6.9	6.5	7.7	7.1	14.2	15.6
H. Transportation and Storage	*	*	*	*	*	*	*
I. Accommodation & food service activities	11.2	11.8	10.3	8.7	11.0	13.4	16.8
J. Information & communication	*	*	*	*	*	[9.3]	*
K-L. Financial, insurance and real estate activities	*	*	*	*	[6.1]	[7.9]	[10.4]
M. Professional, scientific and technical activities	*	*	*	*	[6.0]	9.0	[16.8]
N. Administrative and support service activities	[7.6]	[10.6]	[6.1]	[10.5]	[9.6]	15.3	20.9
O. Public administration and defence; compulsory social security	*	*	*	*	*	*	*
P. Education	[8.5]	[8.3]	[8.2]	[8.8]	5.8	[9.3]	[15.0]
Q. Human health and social work activities	7.3	9.3	6.8	6.4	7.8	11.6	21.0
R-U. Other NACE activities	[9.0]	[9.3]	[8.1]	[13.0]	8.2	13.1	15.7
Unknown	12.0	11.3	11.0	12.1	11.4	16.3	13.8
<b>Total females</b>	<b>9.3</b>	<b>9.1</b>	<b>8.6</b>	<b>8.9</b>	<b>8.2</b>	<b>12.8</b>	<b>16.2</b>
<b>All persons</b>							
A. Agriculture, forestry and fishing	*	*	[15.6]	*	[10.4]	[20.7]	[28.7]
B-E. Industry	19.3	14.5	15.6	13.9	12.5	15.1	23.3
F. Construction	18.3	17.1	14.8	13.4	8.4	14.8	22.2
G. Wholesale & Retail trade; Repair of motor vehicles and motorcycles	14.7	10.9	10.3	11.1	8.8	13.7	17.8
H. Transportation and Storage	11.6	[8.8]	17.9	13.8	12.8	18.2	19.3
I. Accommodation & food service activities	10.9	11.9	10.2	12.0	11.1	12.9	16.7
J. Information & communication	[8.7]	[11.3]	[10.6]	[10.3]	7.5	8.8	19.9
K-L. Financial, insurance and real estate activities	[6.8]	[11.9]	[8.3]	*	6.4	12.7	10.9
M. Professional, scientific and technical activities	[11.2]	[7.4]	[6.5]	[9.2]	6.6	10.8	15.2
N. Administrative and support service activities	13.6	13.0	10.8	20.3	11.0	15.2	23.2
O. Public administration and defence; compulsory social security	*	*	*	*	[10.0]	[19.1]	[14.2]
P. Education	[11.0]	11.5	[10.3]	[9.5]	7.0	10.9	13.8
Q. Human health and social work activities	9.5	11.5	8.4	6.5	11.5	12.7	21.6
R-U. Other NACE activities	12.5	12.2	12.4	13.1	10.8	13.6	18.6
Unknown	21.5	19.9	17.2	18.0	17.0	21.4	20.5
<b>Total persons</b>	<b>16.0</b>	<b>14.8</b>	<b>13.6</b>	<b>13.5</b>	<b>10.4</b>	<b>15.1</b>	<b>20.2</b>

\* Indicates where sample occurrence is too small for estimation, while parentheses [ ] indicate results based on small numbers and are therefore subject to a wide margin of error.

**Table 13 Unemployed (ILO) persons aged 15 years and over classified by sex and previous occupation, Q1 2005 to Q1 2011**

'000

Previous occupation	Q1 2005	Q1 2006	Q1 2007	Q1 2008	Q1 2009	Q1 2010	Q1 2011
<b>Males</b>							
1. Managers and Administrators	[2.1]	[2.2]	[2.6]	[2.2]	8.2	10.6	-
2. Professional	*	*	*	[2.4]	4.7	6.7	-
3. Associate Professional and Technical	[2.0]	[1.9]	[2.3]	[3.4]	5.2	7.8	-
4. Clerical and Secretarial	[2.3]	[2.0]	[2.8]	[3.2]	6.1	5.4	-
5. Craft and Related	9.6	11.3	12.5	20.6	59.6	74.0	-
6. Personal and Protective Service	3.7	3.8	4.7	4.6	7.9	9.2	-
7. Sales	[2.2]	[2.3]	3.4	[3.5]	7.7	8.6	-
8. Plant and Machine Operatives	6.0	18.6	7.6	8.5	17.8	23.7	-
9. Other	11.8	11.7	12.3	14.5	26.9	29.1	-
10. No previous occupation code available/Not stated	9.7	*	10.9	10.3	14.3	19.7	-
<b>Total males</b>	<b>51.0</b>	<b>55.4</b>	<b>60.5</b>	<b>73.1</b>	<b>158.4</b>	<b>194.9</b>	-
<b>Females</b>							
1. Managers and Administrators	[1.9]	[1.8]	[1.9]	*	4.9	7.2	-
2. Professional	*	[2.1]	*	[2.4]	4.2	4.9	-
3. Associate Professional and Technical	[1.8]	*	[2.8]	*	[3.5]	4.1	-
4. Clerical and Secretarial	5.0	5.1	5.7	5.1	10.6	15.1	-
5. Craft and Related	*	*	[1.7]	*	*	*	-
6. Personal and Protective Service	5.3	6.8	5.3	6.9	12.3	13.5	-
7. Sales	4.8	6.4	5.6	5.8	9.6	11.1	-
8. Plant and Machine Operatives	[1.8]	9.0	*	[2.0]	[3.3]	4.3	-
9. Other	3.6	4.0	3.5	4.2	5.6	6.7	-
10. No previous occupation code available/Not stated	6.5	*	8.2	5.2	9.1	12.0	-
<b>Total females</b>	<b>32.7</b>	<b>37.5</b>	<b>37.6</b>	<b>36.3</b>	<b>64.5</b>	<b>80.2</b>	-
<b>All persons</b>							
1. Managers and Administrators	4.0	4.0	4.5	4.2	13.1	17.8	-
2. Professional	2.9	3.7	[2.8]	4.8	9.0	11.6	-
3. Associate Professional and Technical	3.8	3.3	5.1	5.3	8.7	11.9	-
4. Clerical and Secretarial	7.3	7.2	8.5	8.3	16.7	20.5	-
5. Craft and Related	10.2	12.0	14.2	21.2	60.7	75.3	-
6. Personal and Protective Service	9.1	10.5	10.1	11.5	20.2	22.8	-
7. Sales	7.0	8.7	9.0	9.3	17.3	19.7	-
8. Plant and Machine Operatives	7.8	27.5	9.1	10.5	21.2	28.0	-
9. Other	15.4	15.7	15.8	18.7	32.5	35.7	-
10. No previous occupation code available/Not stated	16.2	*	19.2	15.5	23.4	31.7	-
<b>Total persons</b>	<b>83.7</b>	<b>92.9</b>	<b>98.1</b>	<b>109.4</b>	<b>222.8</b>	<b>275.0</b>	-

Note: Q1 2011 occupational estimates have not been included due to changes in the methods used to capture and code the existing UK SOC1990 classification. Data is now captured and coded on the basis of the newer UK SOC2010 classification. The CSO is studying this issue with the aim of providing the most consistent time series possible to users. Once this work has been completed additional occupation information for Q1 2011 along with an explanatory note will be published by the CSO.

\* Indicates where sample occurrence is too small for estimation, while parentheses [ ] indicate results based on small numbers and are therefore subject to a wide margin of error.

**Table 14 Average duration of unemployment for unemployed (ILO) persons aged 15 years and over classified by sex and previous occupation, Q1 2005 to Q1 2011**

Previous occupation	months						
	Q1 2005	Q1 2006	Q1 2007	Q1 2008	Q1 2009	Q1 2010	Q1 2011
<b>Males</b>							
1. Managers and Administrators	[18.1]	[17.4]	[16.7]	[7.9]	8.3	12.4	-
2. Professional	*	*	*	[9.0]	4.2	12.8	-
3. Associate Professional and Technical	[9.2]	[12.6]	[12.0]	[12.0]	12.7	10.6	-
4. Clerical and Secretarial	[17.0]	[14.4]	[14.7]	[18.6]	11.3	19.4	-
5. Craft and Related	17.5	19.1	12.9	11.5	8.3	14.2	-
6. Personal and Protective Service	11.7	14.6	11.5	18.7	12.5	14.9	-
7. Sales	[13.5]	[7.8]	10.3	[9.8]	7.7	13.3	-
8. Plant and Machine Operatives	21.3	22.8	16.2	18.0	14.0	15.9	-
9. Other	23.5	17.8	21.6	20.2	13.7	18.8	-
10. No previous occupation code available/Not stated	27.5	*	22.2	21.0	20.2	24.9	-
<b>Total males</b>	<b>20.4</b>	<b>18.7</b>	<b>16.7</b>	<b>15.8</b>	<b>11.3</b>	<b>16.0</b>	-
<b>Females</b>							
1. Managers and Administrators	[6.4]	[6.3]	[7.2]	*	4.9	9.3	-
2. Professional	*	[6.6]	*	[4.0]	4.7	10.7	-
3. Associate Professional and Technical	[8.7]	*	[6.4]	*	[6.4]	10.6	-
4. Clerical and Secretarial	7.8	8.3	6.1	6.9	7.1	11.3	-
5. Craft and Related	*	*	[10.8]	*	*	*	-
6. Personal and Protective Service	9.0	9.9	8.5	9.0	9.0	12.4	-
7. Sales	7.8	7.0	6.5	8.2	7.2	13.2	-
8. Plant and Machine Operatives	[10.6]	11.2	*	[11.3]	[10.7]	11.8	-
9. Other	10.6	10.5	9.0	13.6	10.9	17.9	-
10. No previous occupation code available/Not stated	12.4	*	11.1	12.1	11.5	16.6	-
<b>Total females</b>	<b>9.3</b>	<b>9.1</b>	<b>8.6</b>	<b>8.9</b>	<b>8.2</b>	<b>12.8</b>	-
<b>All persons</b>							
1. Managers and Administrators	12.5	12.5	12.7	6.3	7.0	11.2	-
2. Professional	13.5	9.7	[11.1]	6.5	4.4	11.9	-
3. Associate Professional and Technical	9.0	10.9	8.9	8.7	10.1	10.6	-
4. Clerical and Secretarial	10.7	10.0	9.0	11.5	8.6	13.5	-
5. Craft and Related	16.9	18.4	12.6	11.6	8.3	14.1	-
6. Personal and Protective Service	10.1	11.6	9.9	12.9	10.4	13.4	-
7. Sales	9.6	7.2	7.9	8.8	7.4	13.2	-
8. Plant and Machine Operatives	18.8	19.0	16.2	16.7	13.5	15.3	-
9. Other	20.5	15.9	18.8	18.7	13.2	18.7	-
10. No previous occupation code available/Not stated	21.5	*	17.4	18.0	16.8	21.8	-
<b>Total persons</b>	<b>16.0</b>	<b>14.8</b>	<b>13.6</b>	<b>13.5</b>	<b>10.4</b>	<b>15.1</b>	-

Note: Q1 2011 occupational estimates have not been included due to changes in the methods used to capture and code the existing UK SOC1990 classification. Data is now captured and coded on the basis of the newer UK SOC2010 classification. The CSO is studying this issue with the aim of providing the most consistent time series possible to users. Once this work has been completed additional occupation information for Q1 2011 along with an explanatory note will be published by the CSO.

\* Indicates where sample occurrence is too small for estimation, while parentheses [ ] indicate results based on small numbers and are therefore subject to a wide margin of error.

**Table 15 Adults aged 18-59 years living in households classified by sex and numbers employed in household<sup>1</sup>, Q1 2005 to Q1 2011**

Numbers employed	% of persons aged 18-59						
	Q1 2005	Q1 2006	Q1 2007	Q1 2008	Q1 2009	Q1 2010	Q1 2011
<b>Males</b>							
Jobless household	7	7	7	7	11	14	15
1 person employed	27	27	27	27	30	32	32
2 people employed	41	41	40	43	42	41	40
3+ people employed	25	25	27	23	17	13	13
<b>Total males</b>	<b>100</b>	<b>100</b>	<b>100</b>	<b>100</b>	<b>100</b>	<b>100</b>	<b>100</b>
<b>Females</b>							
Jobless household	10	10	9	10	12	15	17
1 person employed	28	28	28	28	32	33	34
2 people employed	41	41	40	42	41	39	38
3+ people employed	21	22	22	20	15	12	12
<b>Total females</b>	<b>100</b>	<b>100</b>	<b>100</b>	<b>100</b>	<b>100</b>	<b>100</b>	<b>100</b>
<b>All persons</b>							
Jobless household	9	8	8	9	12	15	16
1 person employed	28	27	28	27	31	33	33
2 people employed	41	41	40	42	41	40	39
3+ people employed	23	24	24	22	16	13	13
<b>Total persons</b>	<b>100</b>	<b>100</b>	<b>100</b>	<b>100</b>	<b>100</b>	<b>100</b>	<b>100</b>

<sup>1</sup> See Background Notes

**Table 16 Children aged 0-17 years living in households classified by numbers employed in household<sup>1</sup>, Q1 2005 and Q1 2011**

Numbers employed	% of children aged 0-17						
	Q1 2005	Q1 2006	Q1 2007	Q1 2008	Q1 2009	Q1 2010	Q1 2011
Jobless household	12	12	11	13	16	19	21
1 person employed	36	36	36	35	37	38	38
2 people employed	43	45	44	45	42	38	38
3+ people employed	9	8	9	8	6	4	4
<b>Total</b>	<b>100</b>	<b>100</b>	<b>100</b>	<b>100</b>	<b>100</b>	<b>100</b>	<b>100</b>

<sup>1</sup> See Background Notes

## Background Notes

For the purpose of this report the same classifications, concepts and methods are applied as used for main QNHS outputs. In particular the classification of unemployment is based on the ILO classification of economic activity. For further background information the detailed background notes of the main quarterly release from the QNHS should be referred to. This can be found at the internet address below:

[http://www.cso.ie/releasespublications/documents/labour\\_market/current/qnhs.pdf](http://www.cso.ie/releasespublications/documents/labour_market/current/qnhs.pdf)

<b>Reference period</b>	The report refers to the first quarters (January-March) of the years 2005 to 2011 from the Quarterly National Household Survey (QNHS).
<b>NACE economic sector of previous employment</b>	<p>Persons unemployed classified by the NACE economic sector of their previous job uses the same NACE Rev.2 classification as is used in the main Quarterly National Household Survey (QNHS) release.</p> <p>A separate category of unknown is used for persons where no information is available on the NACE economic sector of their previous job or where a respondent has never worked. This “unknown” category is further broken down by Principal Economic Status to distinguish those who have previously worked from others.</p>
<b>Occupation in previous employment</b>	<p>Persons unemployed classified by their occupation in their previous job uses the same UK Standard Occupation classification (SOC) as is used in the main Quarterly National Household Survey (QNHS) release. This Classification incorporates some modifications to reflect the Irish labour market.</p> <p>A separate category of unknown is used for persons where no information is available on their occupation in their previous job or where a respondent has never worked.</p>
<b>Jobless Households</b>	<p>Tables 15 and 16 present data on jobless households. The indicator “People aged 18-59 years living in jobless households” is calculated as the share of persons aged 18-59 who are living in households where no one works. Students aged 18-24 who live in households composed solely of students of the same age class are not included.</p> <p>The indicator of “children aged 0-17 years living in jobless households” is calculated as the share of persons aged 0-17 who are living in households where no-one works.</p>
<b>Note on tables</b>	The row or column percentages in the tables in this release may add to 99% or 101% because of rounding.
<b>Reliability</b>	<p>Estimates for number of persons or averages where there are less than 30 persons in a cell are not produced as estimates are too small to be considered reliable. These estimates are presented with * (asterisk) in the relevant tables.</p> <p>Where there are 30-49 persons in a cell, estimates are considered to have a wider margin of error and should be treated with caution. These cells are accompanied by parentheses [ ].</p> <p>In the case of percentages these limits apply to the denominator used in generating the percentage.</p>
<b>Further information</b>	For further information on any of the variables please see the main QNHS Q1 2011 publication.