



An
Phríomh-Oifig
Staidrimh

Central
Statistics
Office

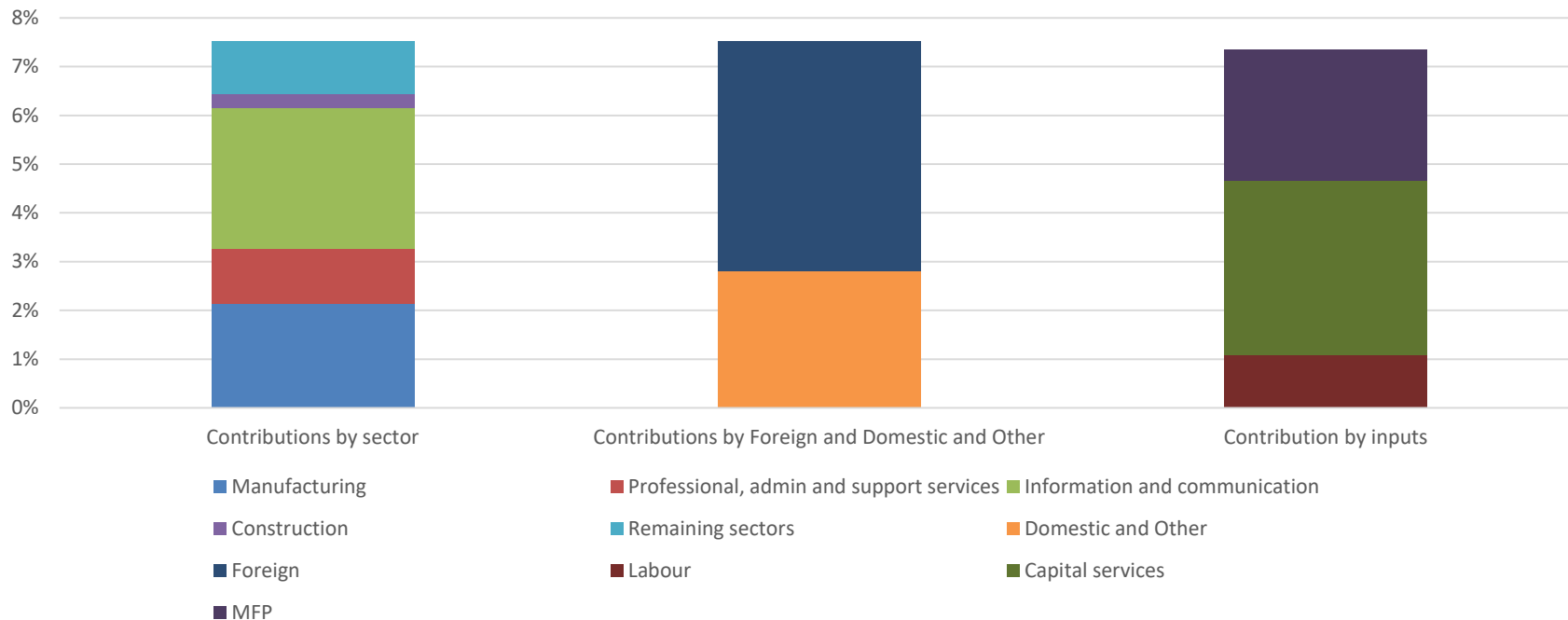
Productivity in Ireland 2019

Productivity Liaison Group

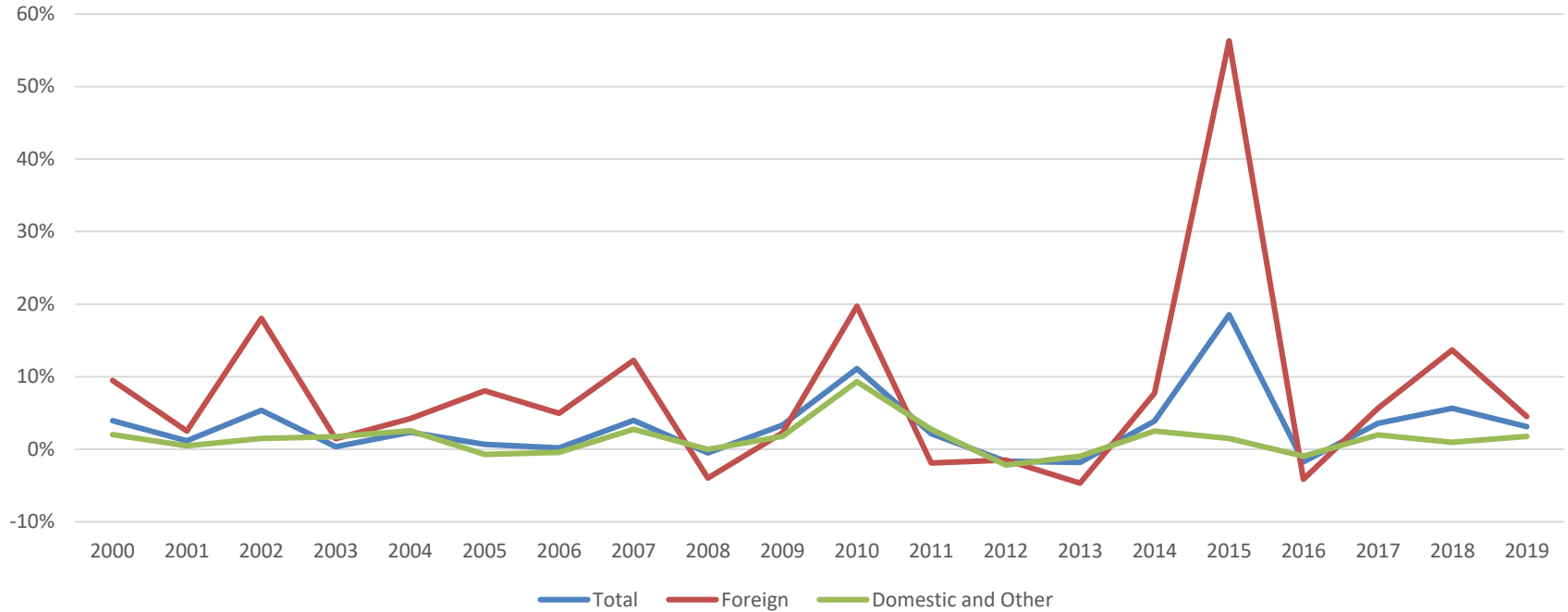
June 2021

Michael Connolly, Yvonne Hayden and Sean O'Boyle

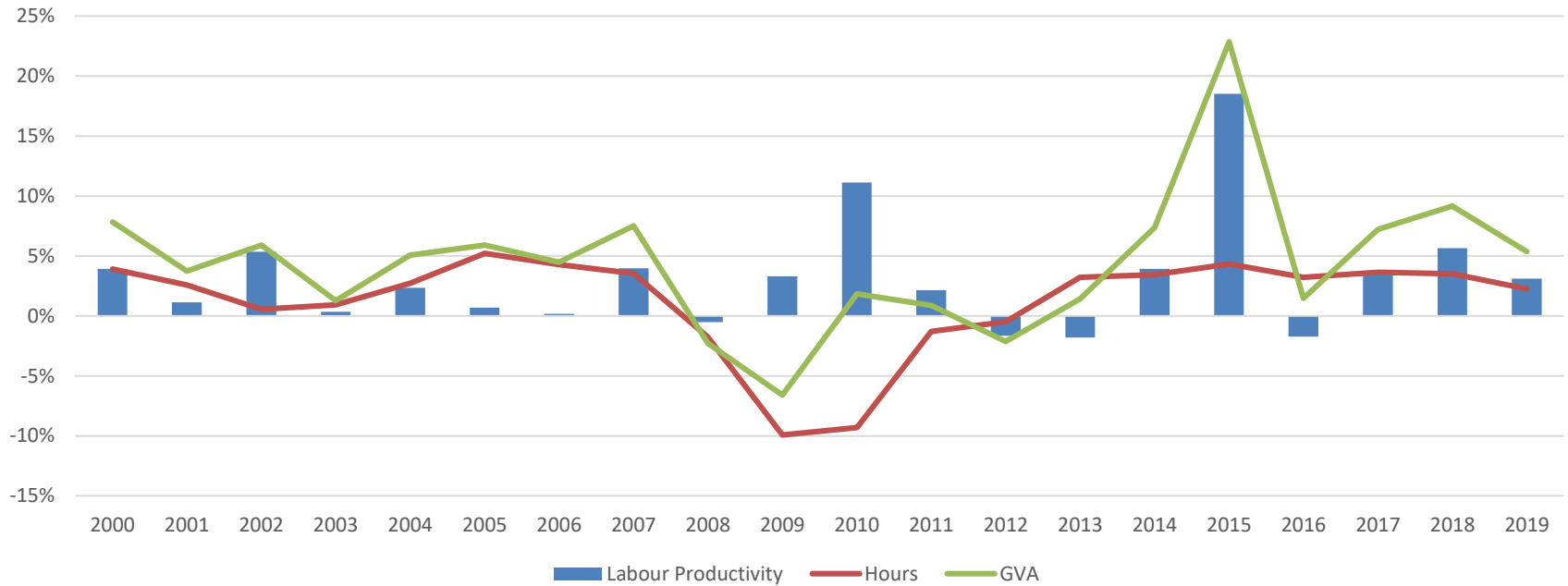
Sources of Growth: 2016-2019



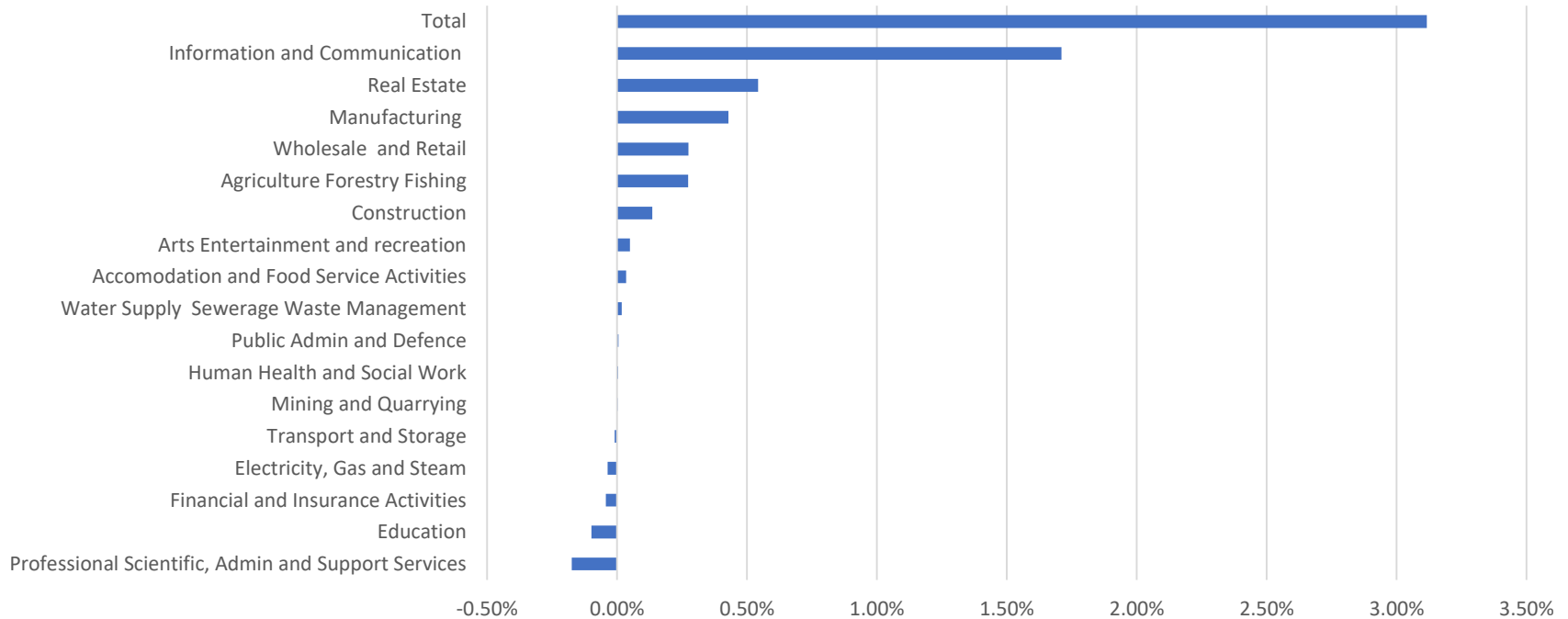
Labour Productivity: Comparison



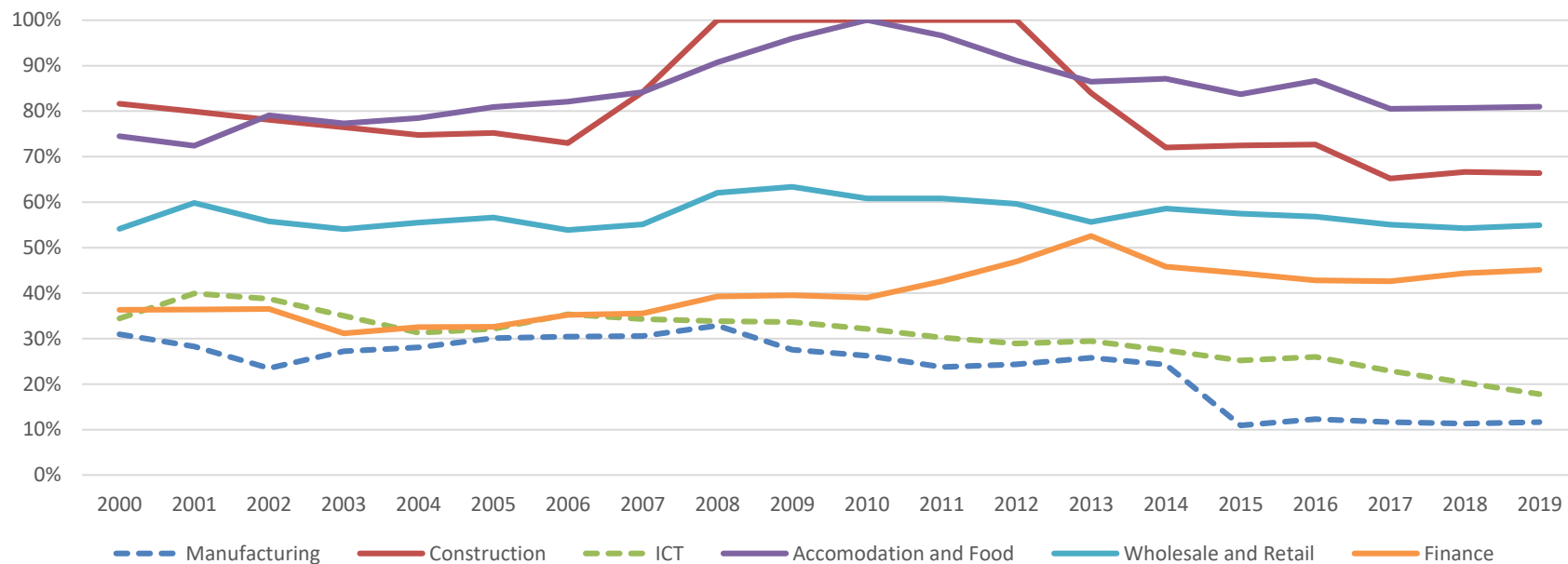
Overall Economy : Hours and GVA



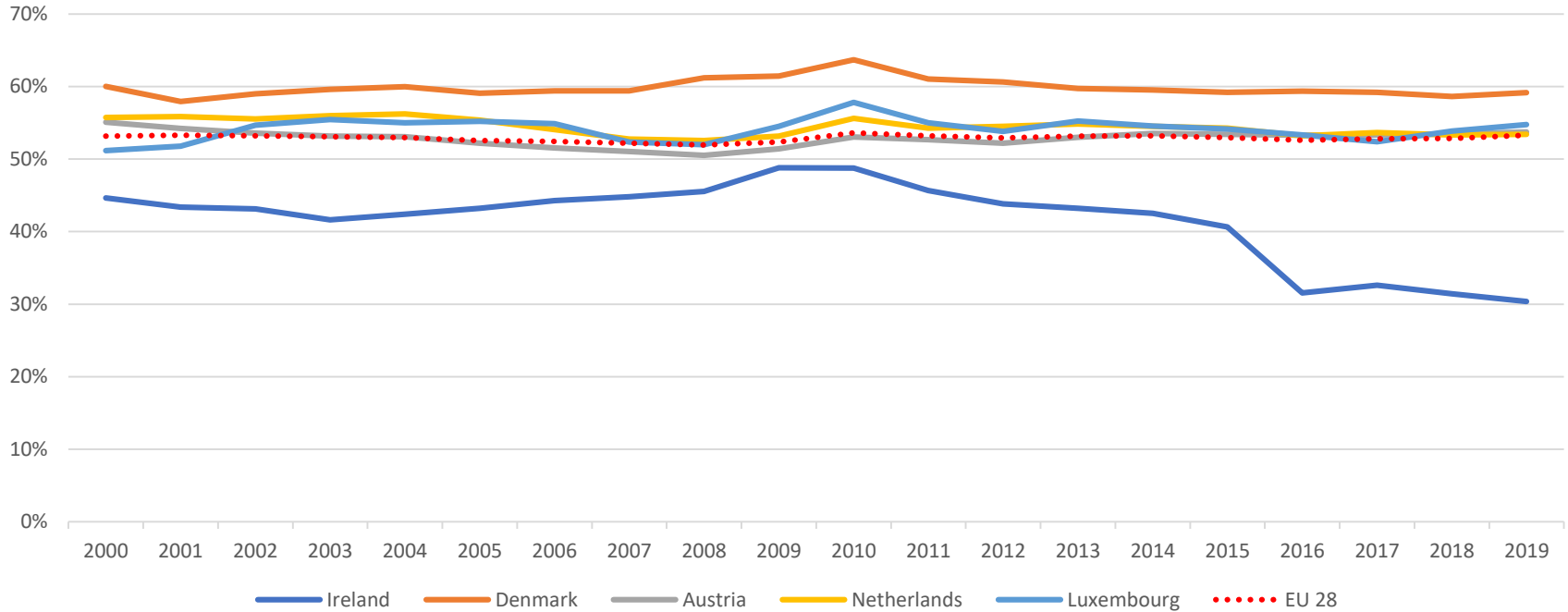
Contribution of sectors to Labour Productivity Growth in 2019



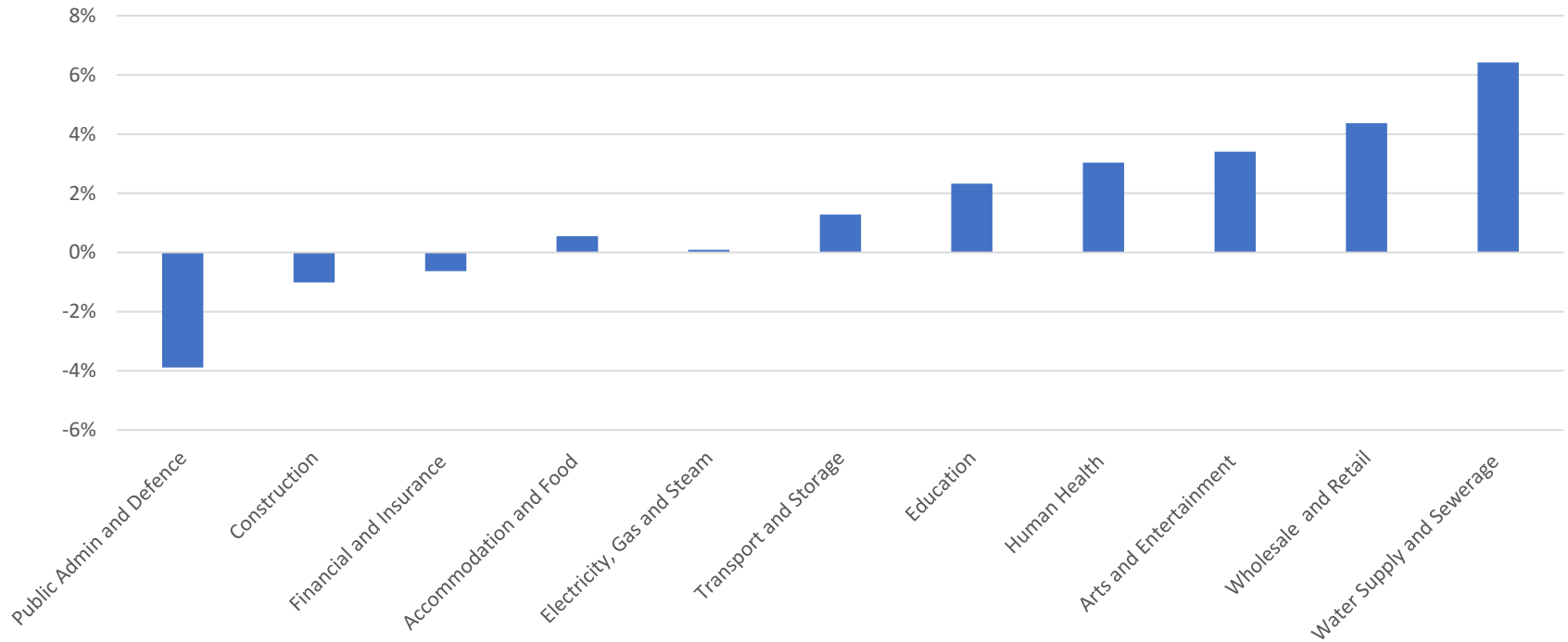
Labour Share: Sectoral Analysis



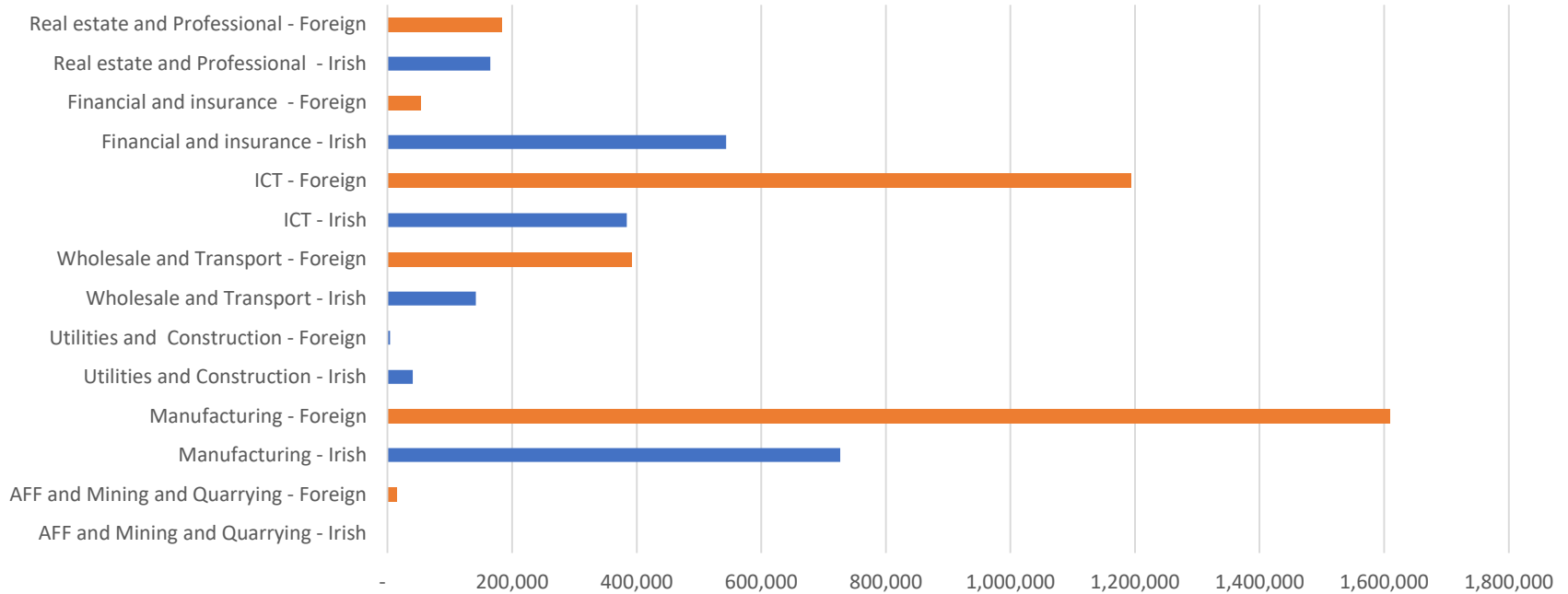
Labour Share by Country: 2000 -2019



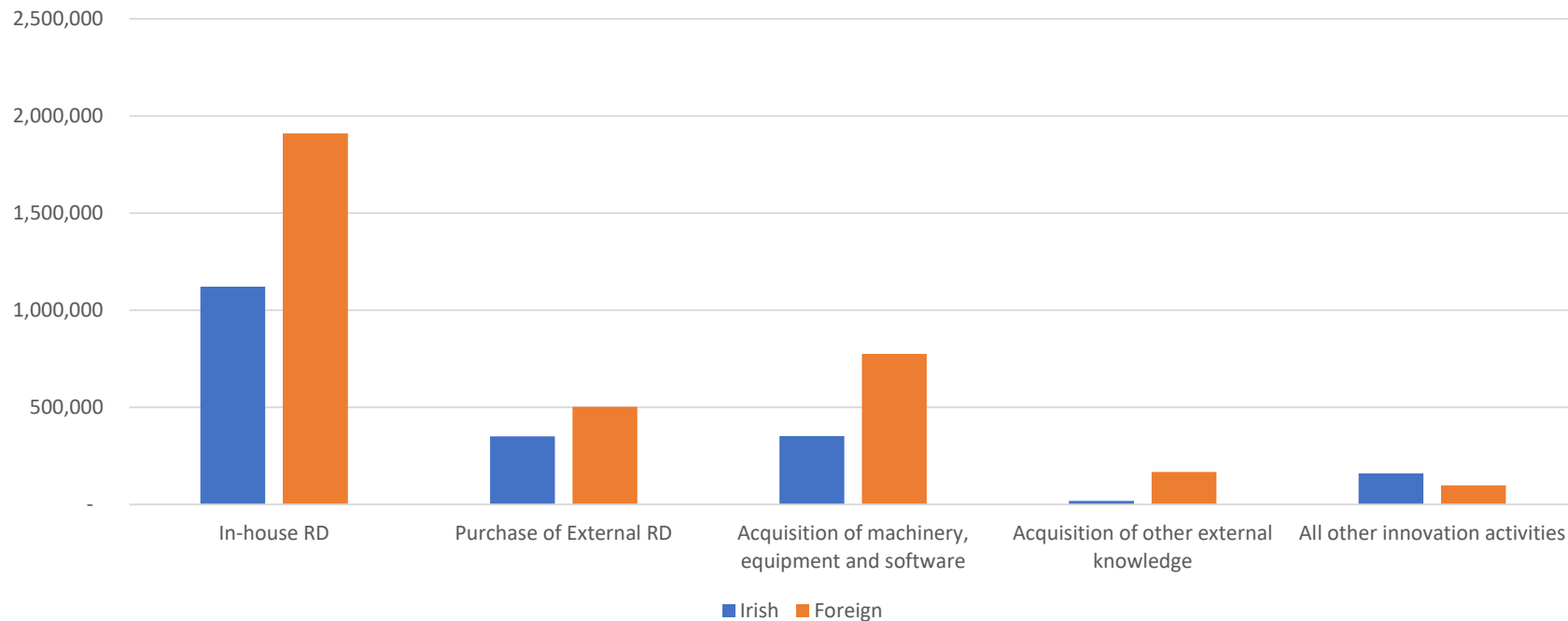
Domestic Growth 2019: Nominal Unit Labour Costs



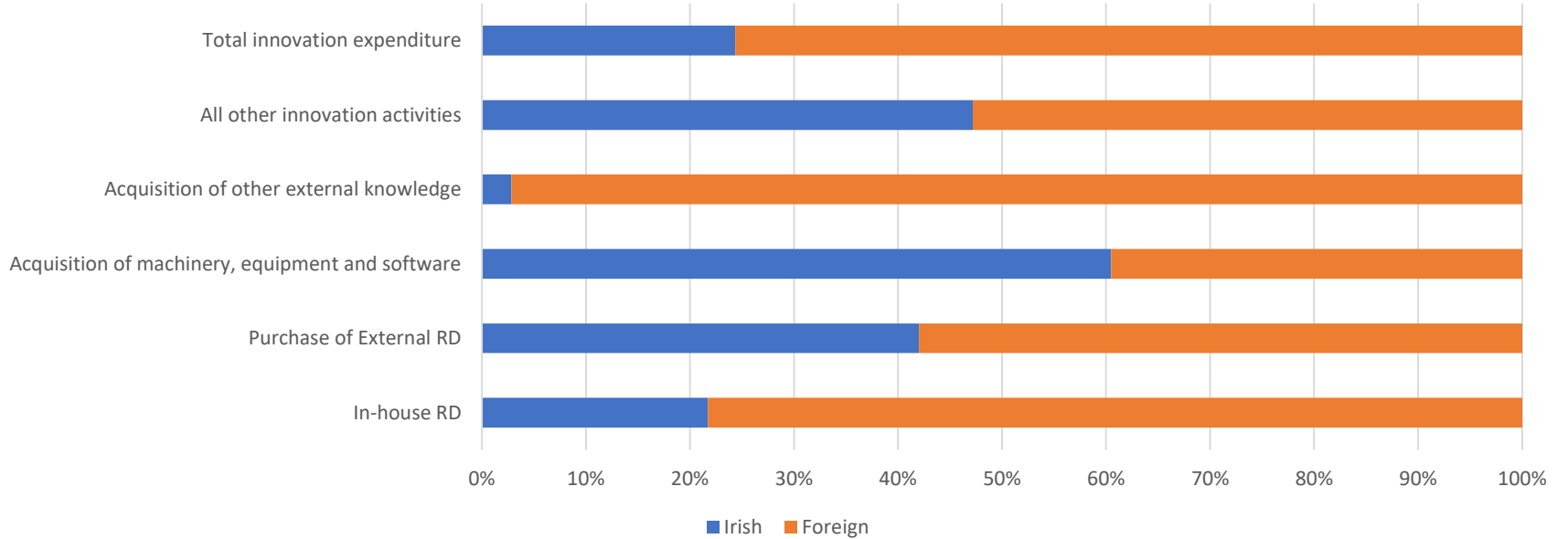
Total innovation expenditure



Comparison Innovation Expenditure: Irish v Foreign:2018

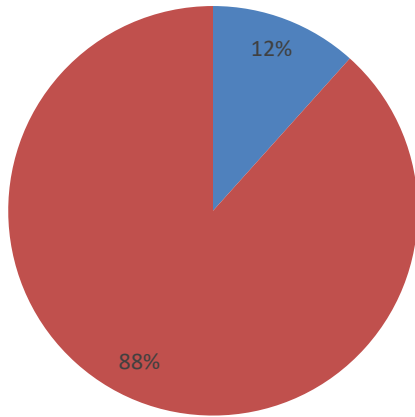


ICT : Innovation Spending 2018

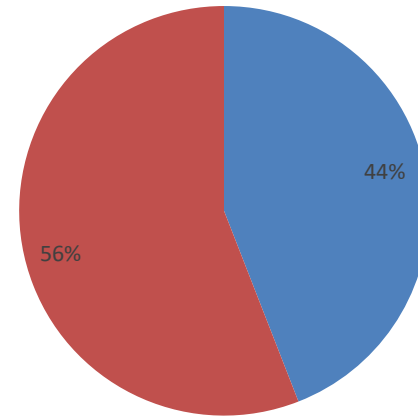


Comparison GVA and Employment: ICT

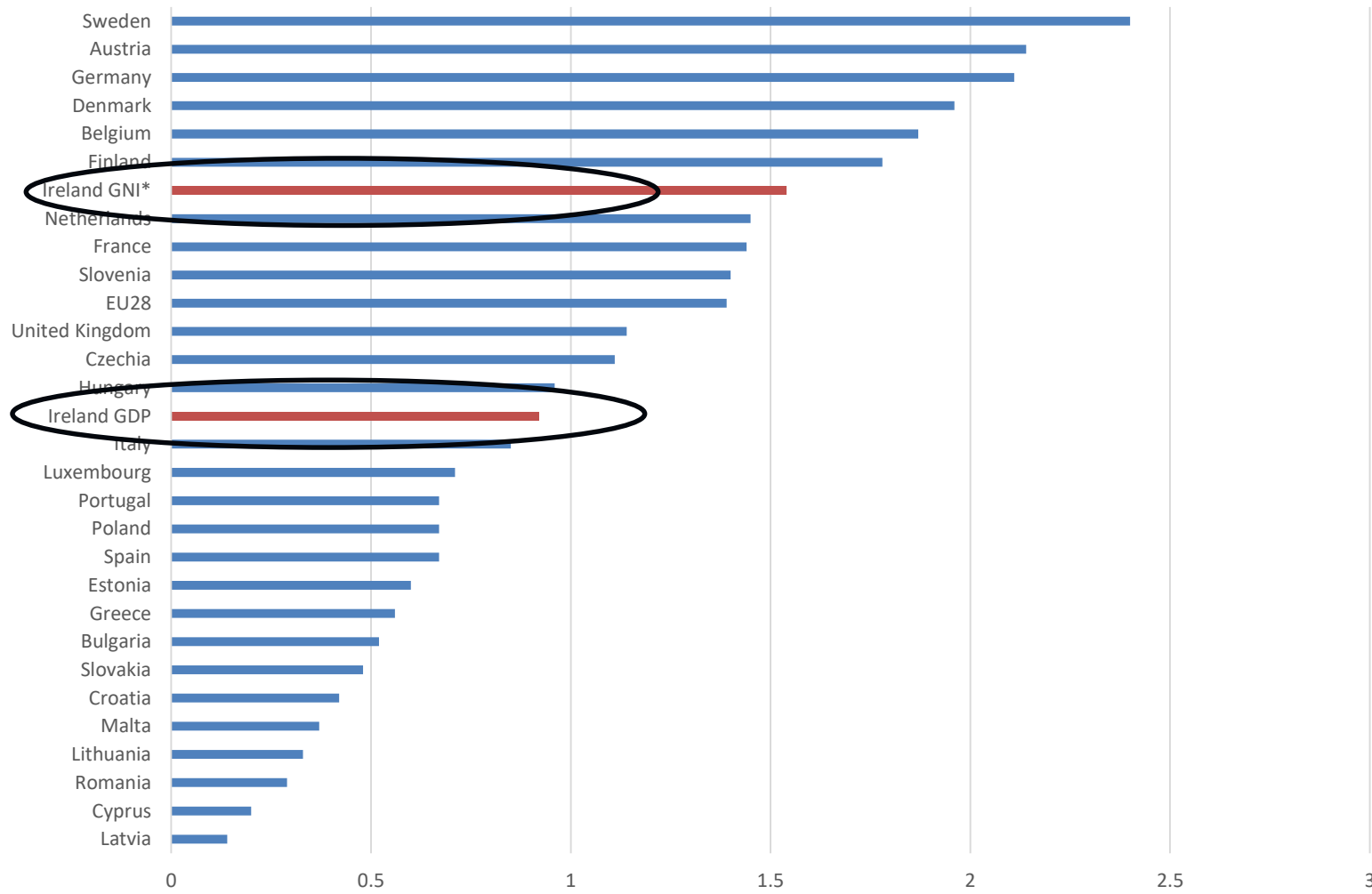
GVA Split: ICT 2018



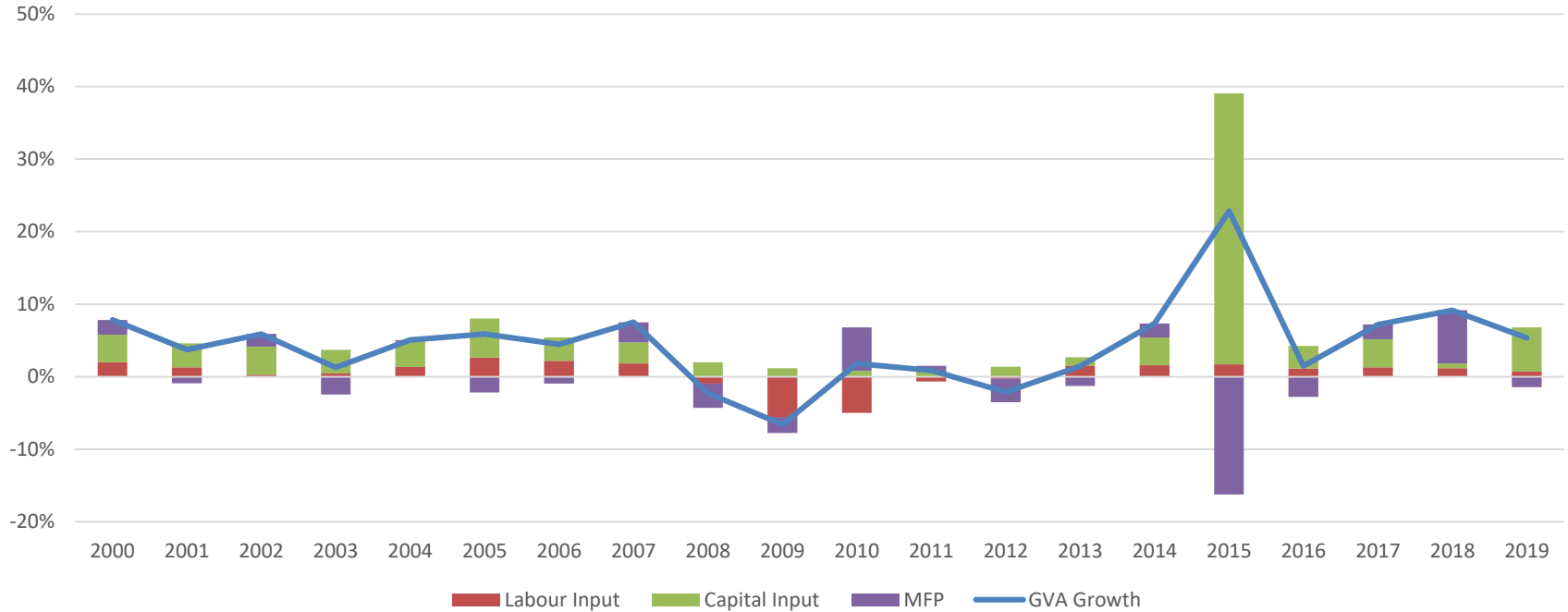
Employment Split: ICT 2018



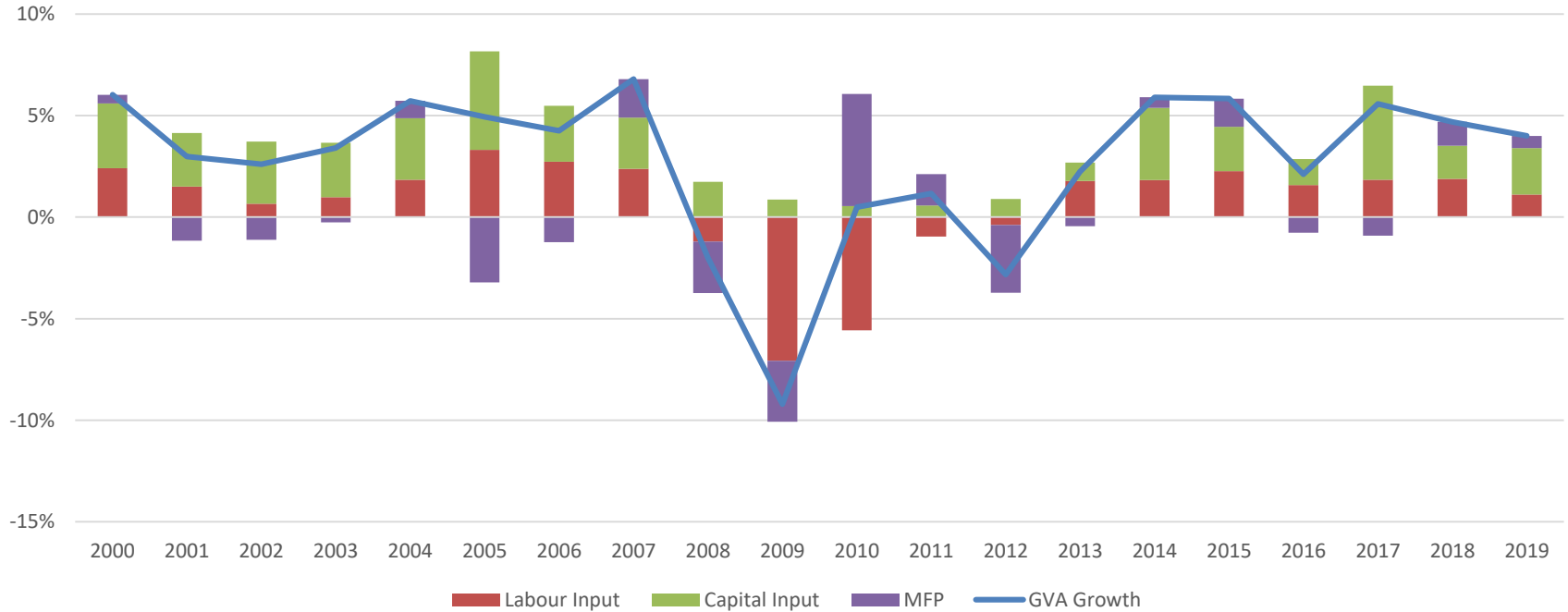
R and D Intensity : 2017 Country comparison



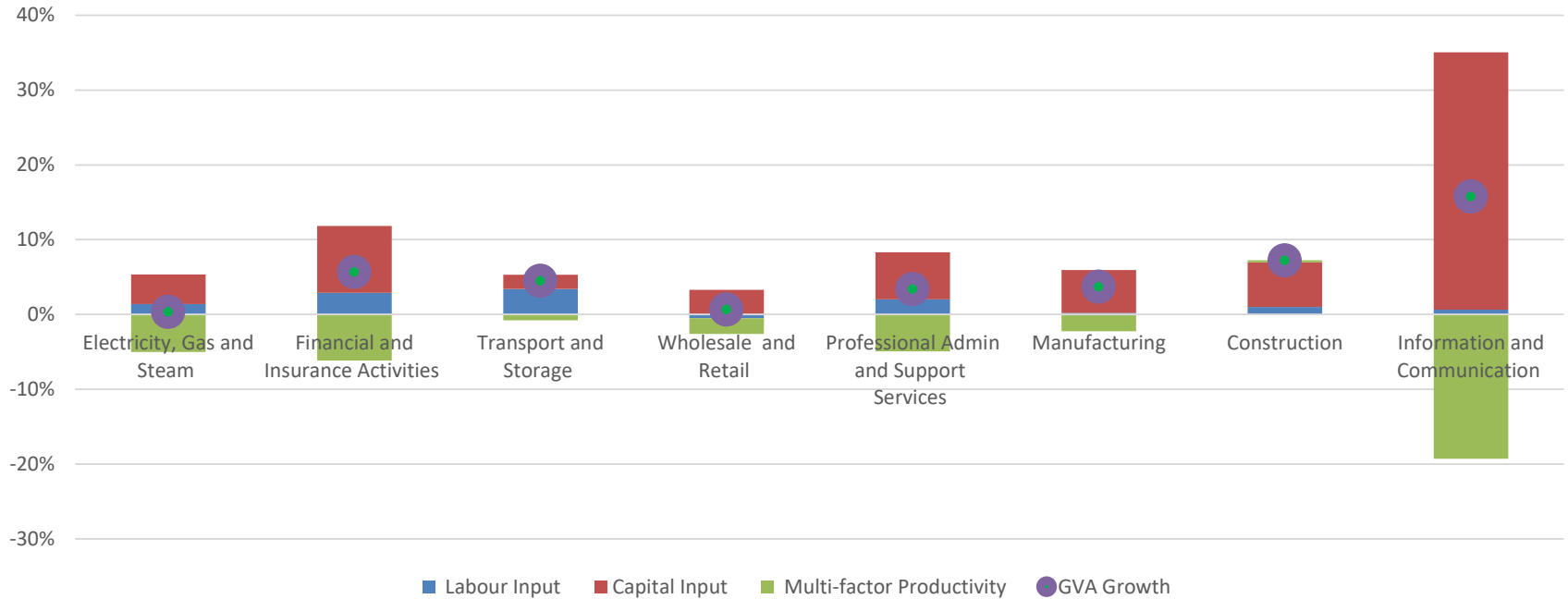
Total Economy: GVA Breakdown: 2000-2019



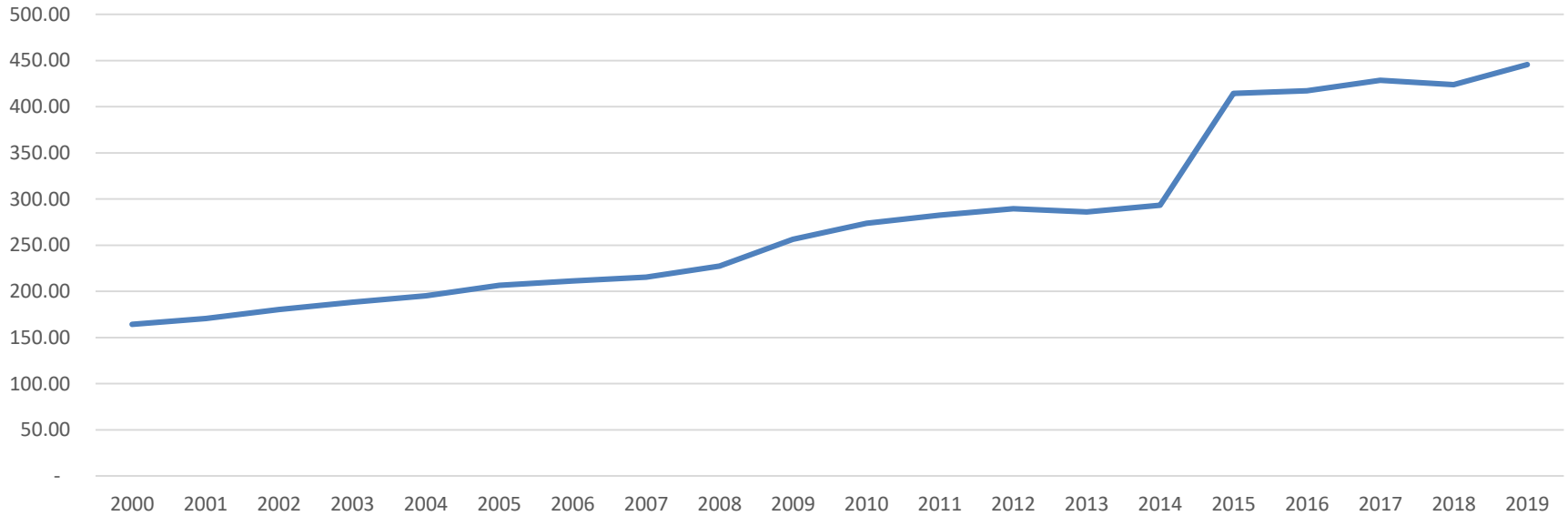
Domestic and Other Sector: GVA growth by Inputs



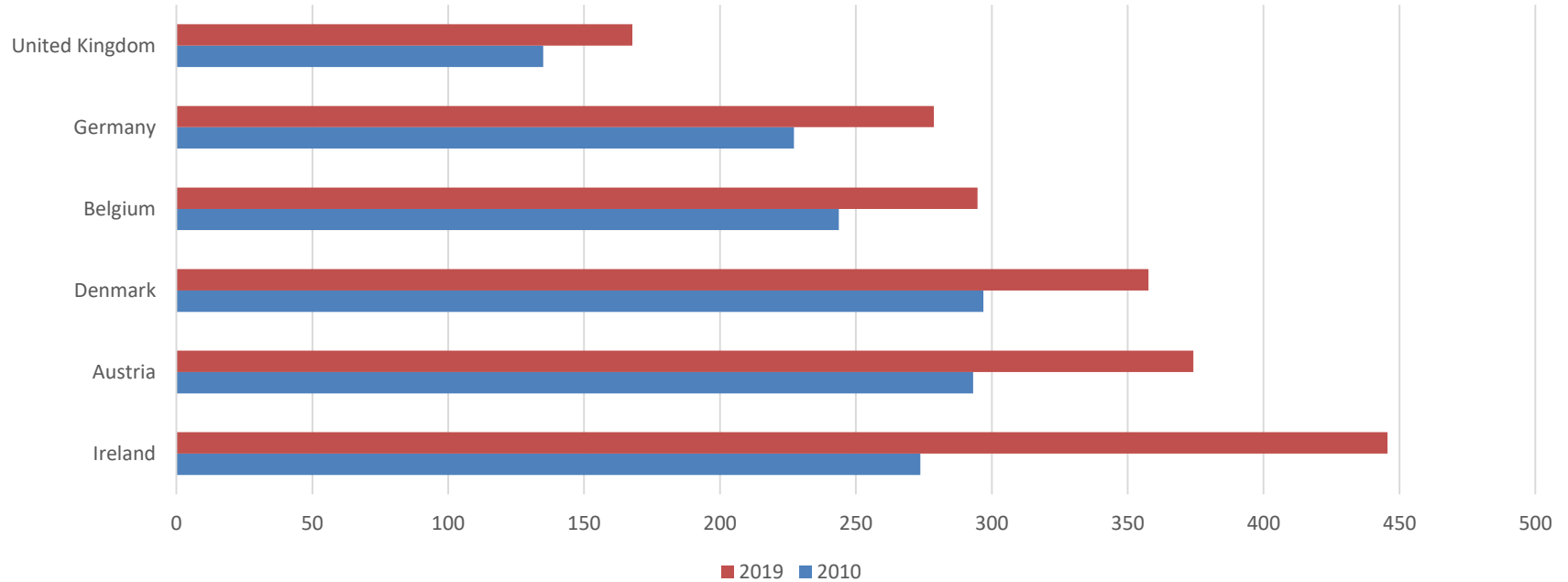
GVA Growth by Sector: 2019



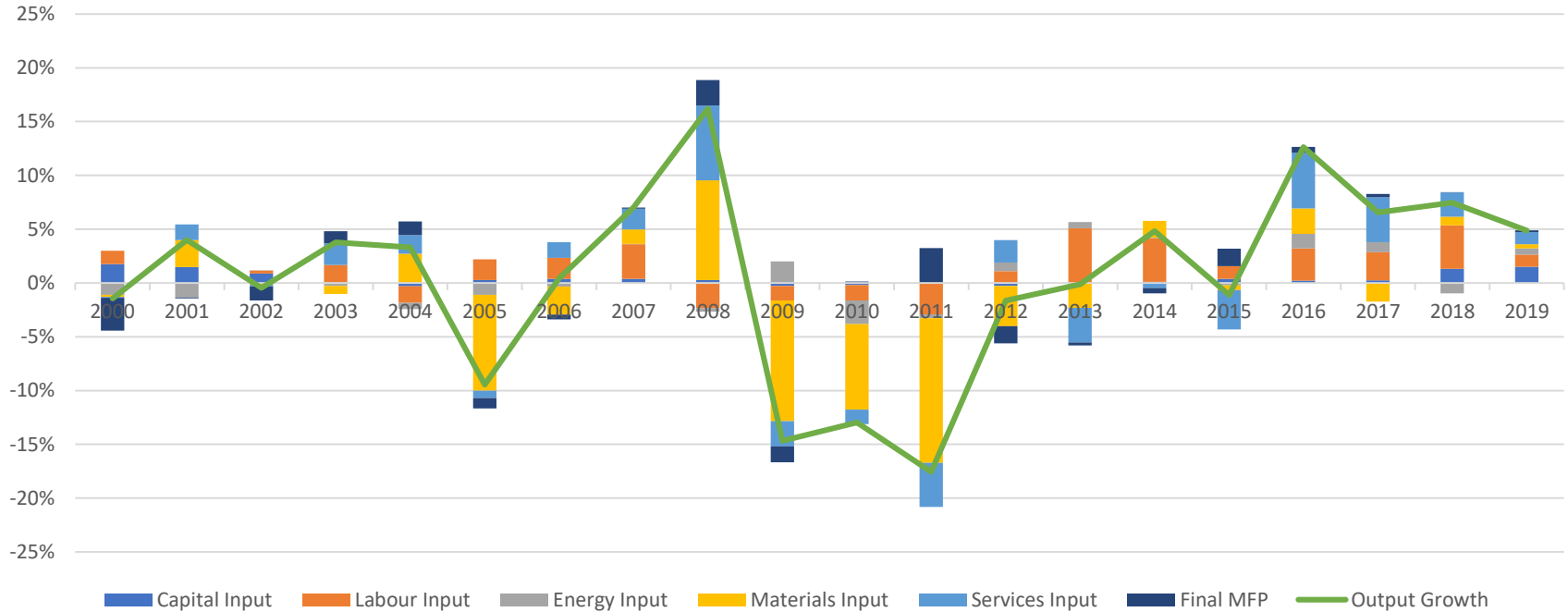
Capital Stocks Per Employee



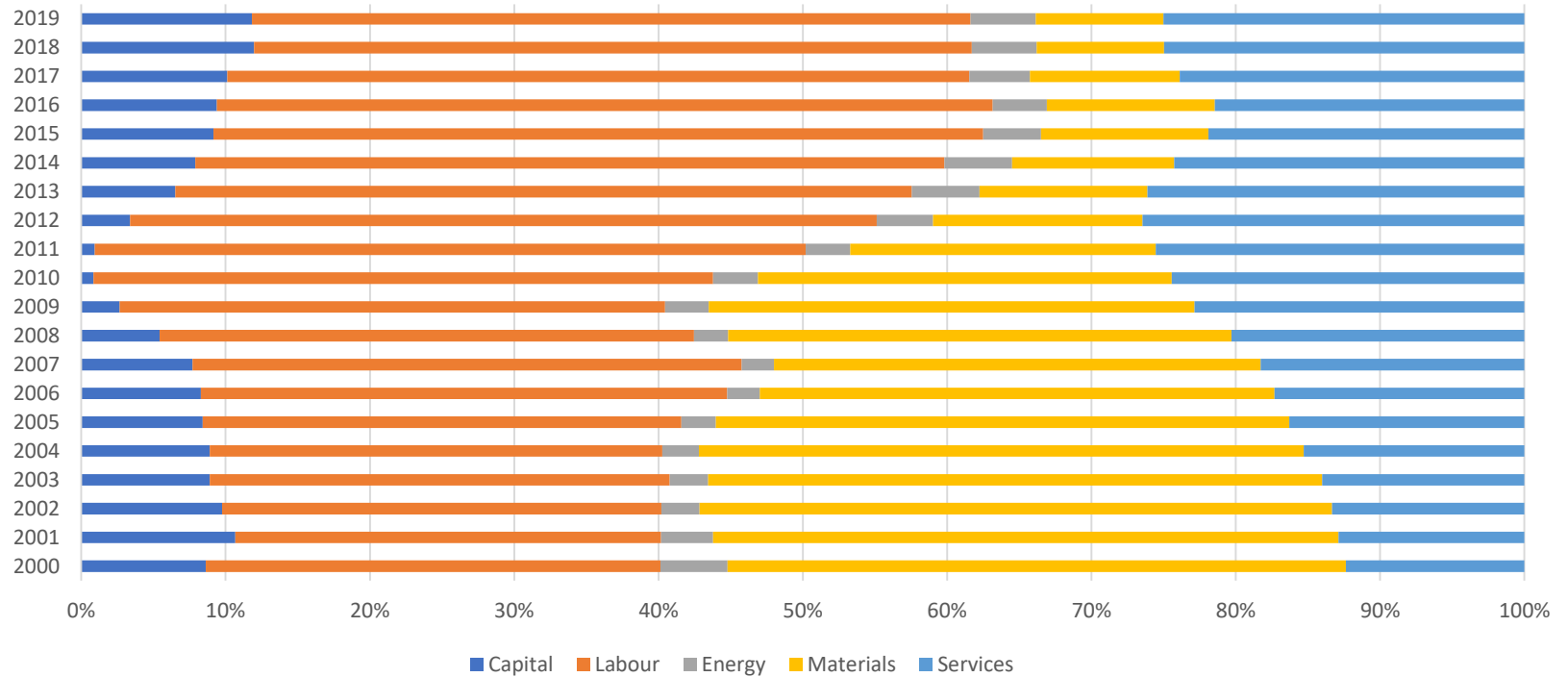
Capital Stocks per Employee



Accommodation & Food



Gross Output Shares: 2000-2019



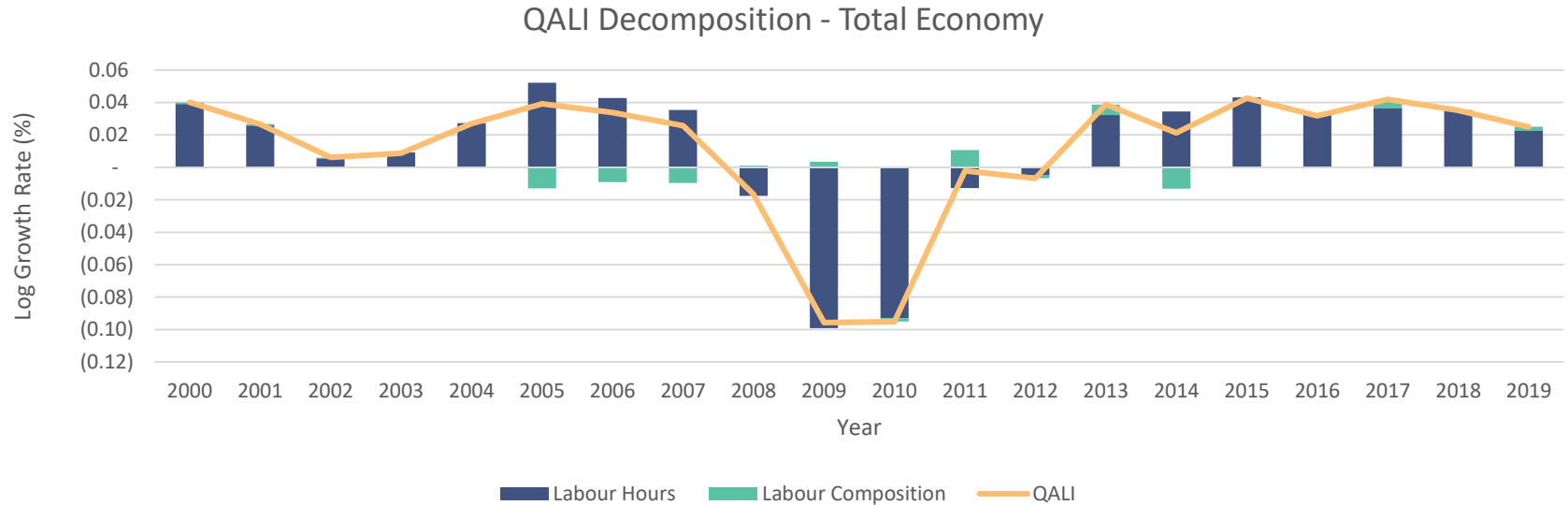
Quality Adjusted Labour Input (QALI)



- 2 Gender Categories
- 3 Age Categories
- 4 Education Categories
- Weighted Compensation by



QALI in the Irish Economy





An
Phríomh-Oifig
Staidrimh

Central
Statistics
Office

Productivity in Ireland 2019



Future Plans: Micro Work

- Firm Size (Small, Medium and Large)
- Review firms in all sectors
- Set thresholds e.g. turnover and employment
- Range of Commercial and National Account data sources

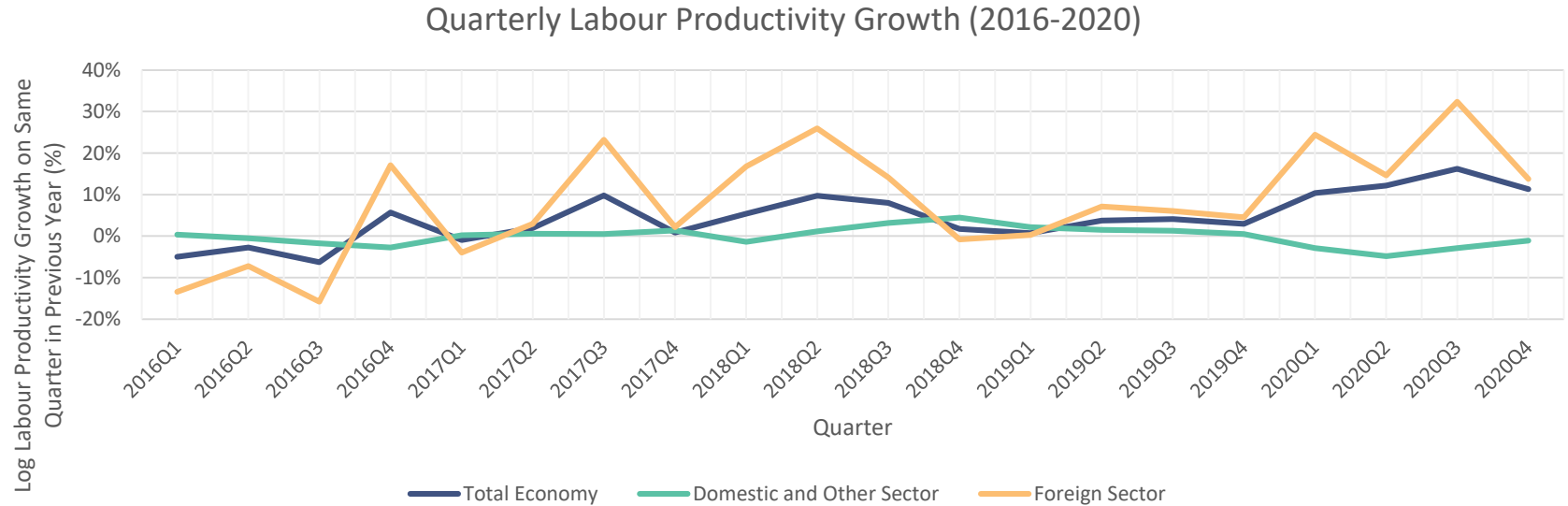


Quarterly Productivity Release

- Shorter release format
- More timely and relevant results



Quarterly Labour Productivity



COVID-19

- Capital Utilisation



For further information please contact

- > Michael Connolly (Michael.Connolly@cso.ie) ☎ (+353) 1 498 4006
- > Yvonne Hayden (Yvonne.Hayden@cso.ie) ☎ (+353) 1 498 4125
- > Seán O'Boyle (Sean.OBoyle@cso.ie) ☎ (+353) 1 498 4144
- > Email: nataccang@cso.ie





An
Phríomh-Oifig
Staidrimh

Central
Statistics
Office

