

Transport Statistics Group

Helen Hughes

Strategic Planning Unit, Senior Project Manager

Presentation to Transport Statistics Group

19th September 2013

- NRA Traffic Monitoring Units
- National Road Transport Indicators Report 2012

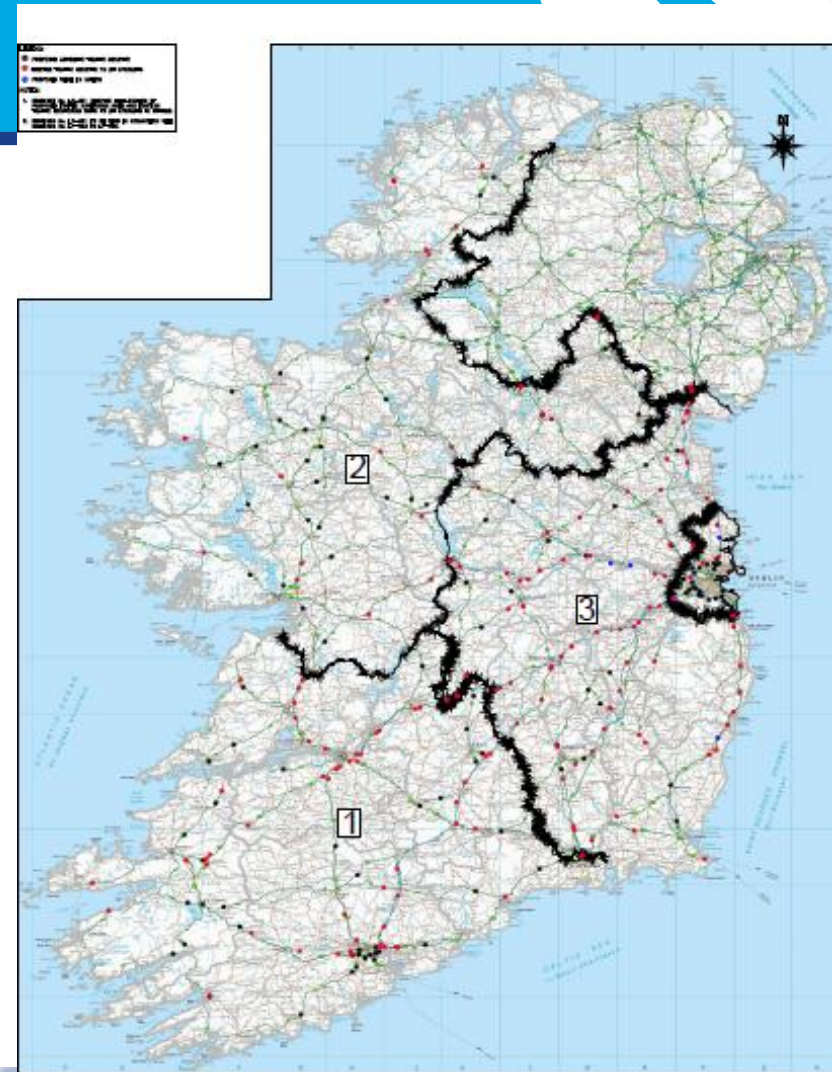
Traffic Monitoring Units

TMU information (from 130 counters to 260)

Traffic counters provide information on the volume of traffic by :

- hour of day
- vehicle classes: motorcycle, car, goods vehicles distinguished by number of axles

Constant demand for information on traffic flows from many sources.



Traffic Monitoring Units

Updated NRA website; www.nra.ie

New traffic counter information

Graphical Interface

Map of sites and List of sites

N62 Between Thurles & M8

Jn6 Thurles, Knockroe

Co. Tipperary

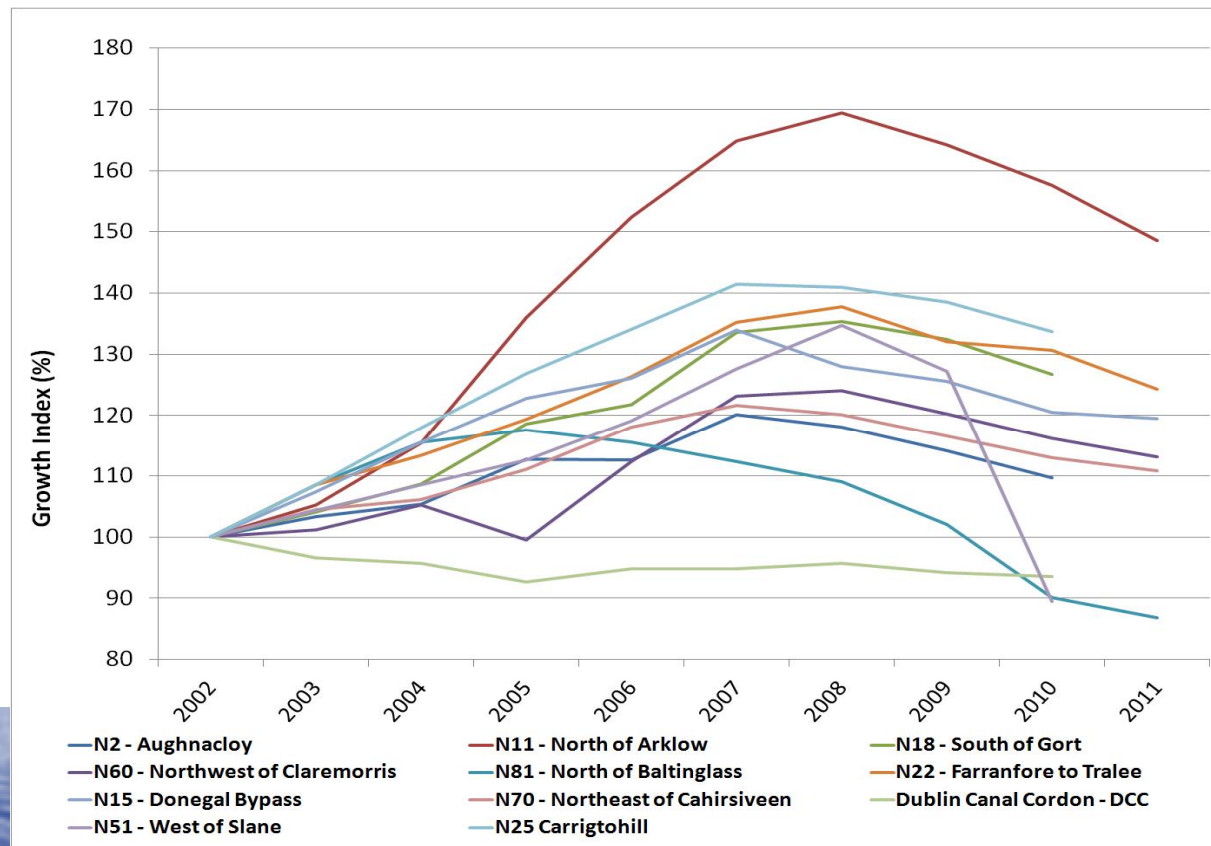
Year 2013

AADT 7653

% HGV 5.1%

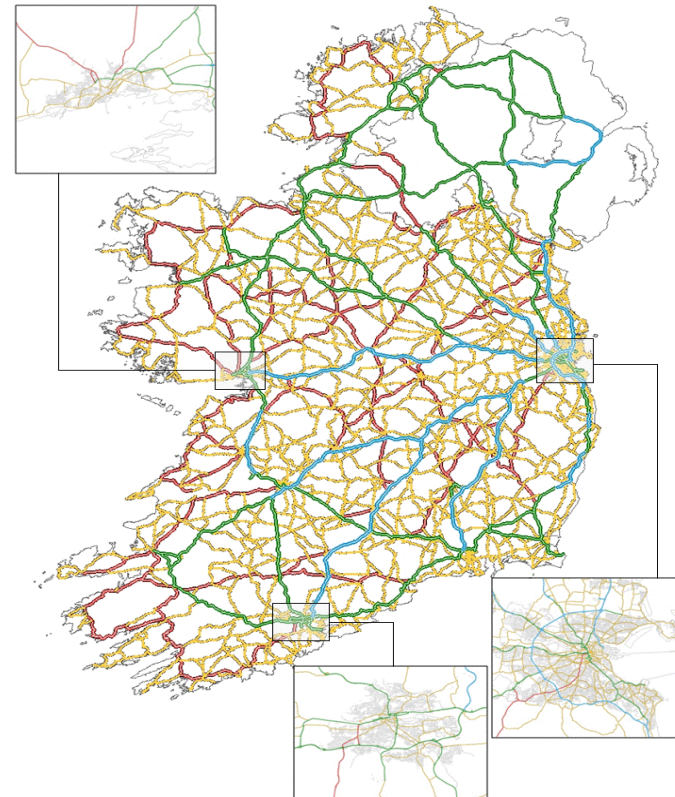
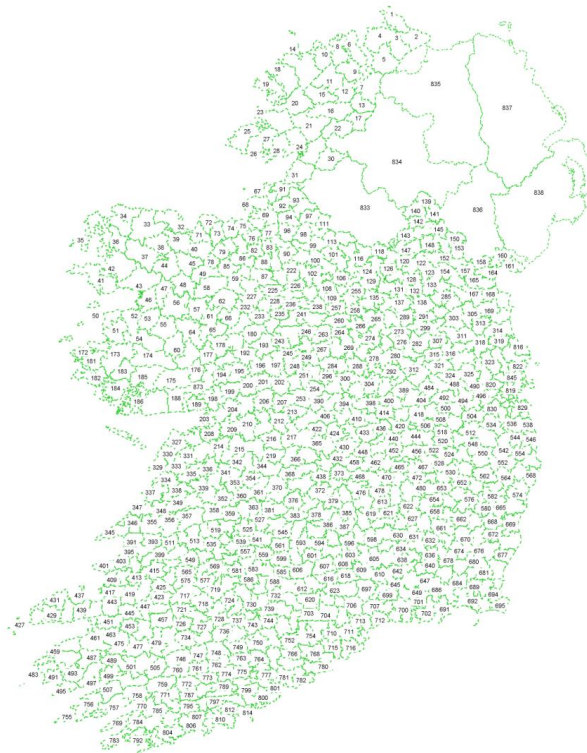
Traffic research

Historic national road traffic growth 2002 - 2011



- Average reduction of 5% on national roads between 2006 and 2011;
- Over 11% reduction between 2008 and 2011

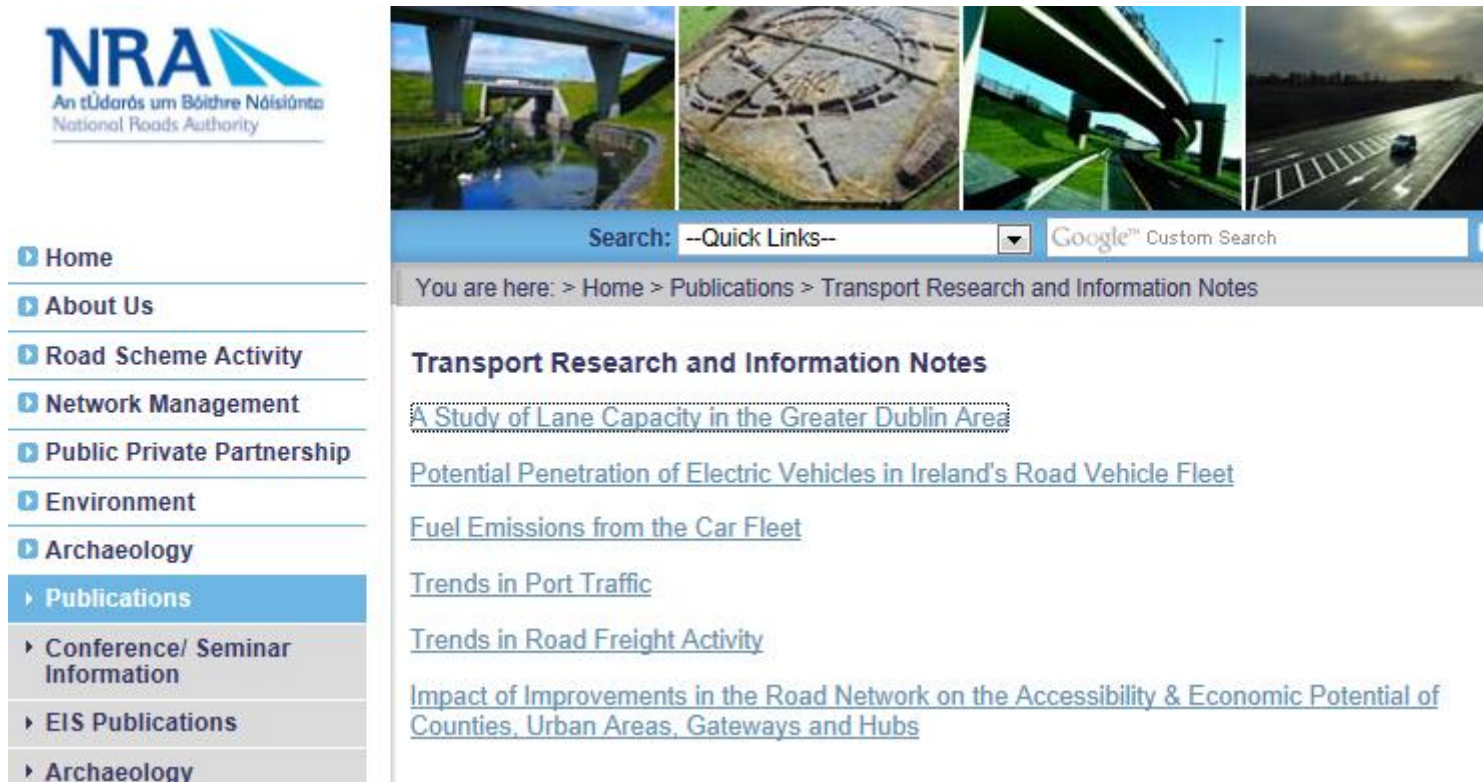
Traffic Modelling : National *Traffic Model Zones and Network*



National Road Transport Indicators Report 2012

- Transport information with national and regional road focus
- *How much travel?* – Vehicles kilometres trends on national roads
- *Where is the travel occurring?* – extract spatial information from our National Traffic Model
- *What is the impact of travel?* Where are the problems

Transport Research TRIN publications



NRA
An tÚdarás um Bóithre Náisiúnta
National Roads Authority

- Home
- About Us
- Road Scheme Activity
- Network Management
- Public Private Partnership
- Environment
- Archaeology
- Publications**
 - Conference/ Seminar Information
 - EIS Publications
 - Archaeology

Search: --Quick Links-- Google™ Custom Search

You are here: > Home > Publications > Transport Research and Information Notes

Transport Research and Information Notes

- [A Study of Lane Capacity in the Greater Dublin Area](#)
- [Potential Penetration of Electric Vehicles in Ireland's Road Vehicle Fleet](#)
- [Fuel Emissions from the Car Fleet](#)
- [Trends in Port Traffic](#)
- [Trends in Road Freight Activity](#)
- [Impact of Improvements in the Road Network on the Accessibility & Economic Potential of Counties, Urban Areas, Gateways and Hubs](#)

