

Agricultural Price Indices

New series to base 2000

1. Introduction

Updated series of agricultural output and input price index numbers with the base year 2000 as 100 have been compiled. The rebasing of the two series is in line with EU recommendations to update the base reference periods at regular five-year intervals. The new series have replaced the existing series to base 1995 as 100.

Monthly and annual output and input price indices have been calculated from January 2000 onwards using as weights the estimated value of sales off farms and the estimated expenditure on farm inputs respectively, averaged over the years 1999, 2000 and 2001. To provide a longer time perspective in the index series, monthly and annual indices from 1995 to 1999 inclusive have been rescaled to the new base year.

2. Historical Background

2.1 Output Price Index

The first regular series of annual agricultural output price indices was published in 1929 with base 1911-1913 as 100. There were two series, one for Ireland (Republic) for the period 1911-1928 inclusive and one for All Ireland for the period 1840-1928 inclusive. These were base weighted Laspeyres type index numbers. In 1930 the All Ireland series was discontinued and the Ireland (Republic) series was reweighted using the then newly available 1926/1927 output quantities. The base reference period of 1911-1913 was retained.

Monthly agricultural output price indices to base 1911-1913 as 100 were introduced in 1931 with indices from January 1922 onward being prepared. Shortly after this, annual sub-indices from 1922 onward for livestock, livestock products and crops were also published.

In 1943 a new series of monthly and annual indices to base 1938/1939 as 100 was introduced. The indices were calculated using the Fisher "Ideal" formula. In 1956 this index was rebased to 1953 as 100.

The Laspeyres index formula was adopted again on the introduction in 1978 of the 1975 based index numbers. This change was made in order to align the Irish series with those in use in other EU member states. This index series saw the introduction of further sub-indices (cattle, sheep, pigs, milk, etc.). In 1985 this series was updated to base 1980 as 100, when vegetables were incorporated in the total outputs index for the first time. In 1988 this series was updated to base 1985 as 100. In 1995 the series was updated to base 1990 as 100. Further updates to the base period of these indices are planned at five year intervals. For consistency with the practice in other EU member states, the series to base 1980 and subsequent rebasings were compiled exclusive of Value Added Tax (VAT).

Detailed information on important changes in the series of output price index numbers are given in the following issues of the *Statistical Bulletin* (previously the *Irish Trade Journal and Statistical Bulletin*):

Base Period	Issue
1911-1913	February 1929, May 1930 and December 1931
1938/1939	March 1943
1953	March 1956 and June 1957
1975	March 1978
1980	September/December 1985 and June 1986
1985	December 1988
1990	June 1995
1995	February 2002

2.2 Input Price Index

The first annual series of agricultural input price index numbers was published in 1931. The series was restricted to feeding stuffs, fertilizers and seeds (the so-called Farm Materials Index) and was compiled to base 1930 as 100 using the Laspeyres formula. The weights used were the quantities of feeding stuffs, fertilizers and seeds purchased in 1926/1927.

In 1943 the Farm Materials Index was discontinued due to insufficient price quotations arising from the very small supplies of feeding stuffs and fertilizers available during World War II. In 1951 a new series to base 1938 as 100, using the Fisher "Ideal" formula was introduced, with annual indices available from 1948. In 1956 this index was rebased to 1953 as 100 and a monthly series was introduced.

The Farm Materials Index was replaced in 1979 by a new series to base 1975 as 100, which covered all non-capital farm materials and services thus introducing many new sub-indices. This series used a Laspeyres index formula with the value of purchases averaged over the years 1974, 1975 and 1976 as weights.

In 1985 indices to base 1980 as 100 and in 1988 indices to base 1985 as 100 were introduced, again using the Laspeyres formula. In 1995 the series was updated to base 1990 as 100. For consistency with the practice in other EU member states, the series to base 1980 and subsequent rebasings were compiled exclusive of VAT.

Detailed information on important changes in the input price index numbers can be found in the following issues of the quarterly *Statistical Bulletin* (previously the *Irish Trade Journal and Statistical Bulletin*):

Base Period	Issue
1930	March 1932
1938	March 1951
1953	March 1956 and March 1957
1975	March 1979
1980	September/December 1985
1985	December 1988
1990	June 1995
1995	February 2002

3. Main Features of the Updated Series

In general the methodology of the updated series is similar to that of the former series. Changing to base 2000 has meant that base year average prices, for each item produced, refer to 2000 and that the weights used refer to the average of the years 1999, 2000 and 2001. The following is a more detailed description of how the indices are calculated.

(i) Weights

The agricultural output price indices are intended to measure trends in the price of agricultural produce sold by farmers. The agricultural input price indices are designed to measure trends in the price of farm inputs purchased for current consumption (i.e. non-capital materials and services). Traditionally both indices were compiled on the basis of the "national farm" concept. The weights used to combine the changes in prices of the individual commodities relate to the value of sales off farms or to the expenditure by farmers on input purchases. The old methodology excluded both the value of inter-farm sales and the value of own produce consumed in farm households. The new methodology, introduced with the last series, included the value of all sales of crop products between farms.

The Laspeyres index formula, involving the use of fixed base year weights, has been used in the compilation of the monthly index numbers for all commodity groupings except vegetables. Since the weights used are based on average values of sales, not on quantities, the following adapted Laspeyres index formula is used:

$$I_t = \sum_j W_{j0} (P_{jt} / P_{j0}) \times 100$$

$$= \sum_j (\text{base period value weight} \times \text{price relative})_j \times 100$$

where

I_t = the overall index in month t

$$W_{j0} = \frac{\overline{P_{j0} Q_{j0}}}{\sum_j \overline{P_{j0} Q_{j0}}}$$

(i.e. the base year value weight of item j)

P_{j0} = the price of item j in the base year (i.e. the average price in the year 1995)

P_{jt} = the price of item j in month t

$\overline{P_{j0} Q_{j0}}$ = the average annual sales/purchases of item j around the base year (i.e. the average value of sales/purchases in the years 1994 to 1996)

P_{jt} / P_{j0} = the "price relative" of item j for month t compared with the base year

With the exception of vegetables the price index of a given commodity j in month t is given by the expression:

$$P_{jt} / P_{j0} \times 100$$

i.e. the price relative multiplied by 100.

As vegetables are a highly seasonal commodity, it is not appropriate to use fixed annual weights when calculating the vegetable price index. Accordingly, an approach using variable monthly baskets is used for this sub-index. The composition of each monthly basket is based on the monthly pattern of sales of vegetables on the Dublin Wholesale Market averaged over the three years 1999 to 2001 inclusive. The monthly index is then calculated using the following formula:

$$V_{mt} = \frac{\sum_i Q_{imo} P_{imt}}{\sum_j Q_{imo} P_{io}} \times 100$$

i.e. $\frac{\text{value of monthly basket at reference month prices}}{\text{value of basket at average base year prices}} \times 100$

where

V_{mt} = vegetable price index in month m in year t

Q_{imo} = quantity of vegetable i in basket in month m in the base year (2000)

P_{imt} = price of vegetable i in month m in year t

P_{io} = weighted annual average price of vegetable i in the base year (2000)

The monthly total output/input price index is the weighted average of the individual output/input price indices using the average annual value of sales off farms/purchases in the period 1999 to 2001 as weights. A spread of three years is used to counteract any abnormalities which might have occurred in a single year.

The annual indices are obtained either as a simple or weighted arithmetic mean of the corresponding monthly indices. In earlier series the annual feeding stuffs and fertilizer indices were calculated as the weighted averages of the monthly indices. From 1995, in line with EU recommendations, the annual input indices are calculated as simple arithmetic averages of the monthly indices. The annual output indices continue to be calculated as the weighted averages of the monthly indices.

(ii) Price Coverage

For consistency with similar price indices at EU level, the prices used from 1995 onwards are based on the market price concept. The market price is defined as the price received by the producer without the deduction of taxes or levies (except deductible VAT) and without the inclusion of subsidies. In the case of sugar beet, however, the A and B levies are deducted.

Monthly price series are used for most products. Only annual prices are available for some items e.g. sugar beet and cereals, and for those products the annual index (or the index of the crop year) is used each month to calculate the monthly indices (until the beginning of the new harvest).

The input prices used are those actually paid by farmers, excluding VAT. Monthly price series are used except for seasonal products, such as seeds, for which prices are only available at certain times during the year. For such seasonal inputs, the monthly prices returned during the last selling period are continued unchanged until the product can be priced again.

The appendices to this article detail the actual price series used. Standardised prices are used for milk, cereals and sugar beet to ensure that products of identical quality are priced in successive periods. In the case of milk for manufacturing this means pricing at a fixed butterfat (3.7%) and protein (3.3%) content and excluding special bonuses paid by some creameries in respect of deliveries meeting certain supply conditions. Prior to 1995 milk for manufacturing was priced only at a fixed butterfat content. In the case of cereals, prices are standardised at 20% moisture content while sugar beet prices are standardised at 16% sugar content.

(iii) Linking of the Former and New Series

Monthly and annual indices from 1995 to 1999 inclusive have been rescaled to the new base year by dividing the former index number by the corresponding 2000 annual index number and multiplying by 100. Thus the series to the new base 2000 as 100 for the period 1995 to 1999 show the same trends as the former series to base 1995 as 100. However, as the sub-indices and aggregate indices have been separately rescaled, the aggregate indices for these years are not the same weighted averages of the relevant sub-indices.

(iv) Seasonal Adjustment

As many agricultural products follow a seasonal production pattern, seasonally adjusted monthly series for the Total Outputs Index and selected sub-indices are also compiled. Agricultural input prices are much less subject to seasonal influences than output prices. However, seasonal patterns in the utilisation of feeding stuffs and fertilizers influence prices. Accordingly, seasonally adjusted indices for these items as well as for the Total Inputs Index are

compiled. The seasonal adjustment is carried out by applying the X-11 Variant of the U.S. Bureau of the Census Method II Multiplicative Seasonal Adjustment Program to the basic monthly series. Monthly indices starting in January 1995 have been used in deriving the seasonal factors.

The seasonally adjusted series will be updated monthly to take account of changes in seasonal patterns.

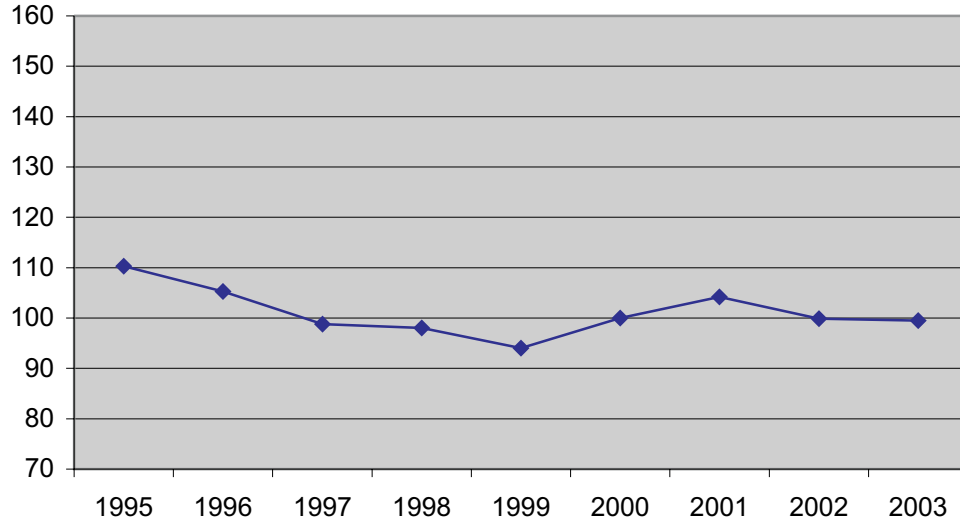
4. Presentation of Results

Table 1 shows the basic annual and monthly output price indices from January 1995 to December 2003, with base 2000 as 100. Table 2 contains annual and monthly input price indices for the same period. Tables 3 and 4 contain the corresponding seasonally adjusted monthly indices.

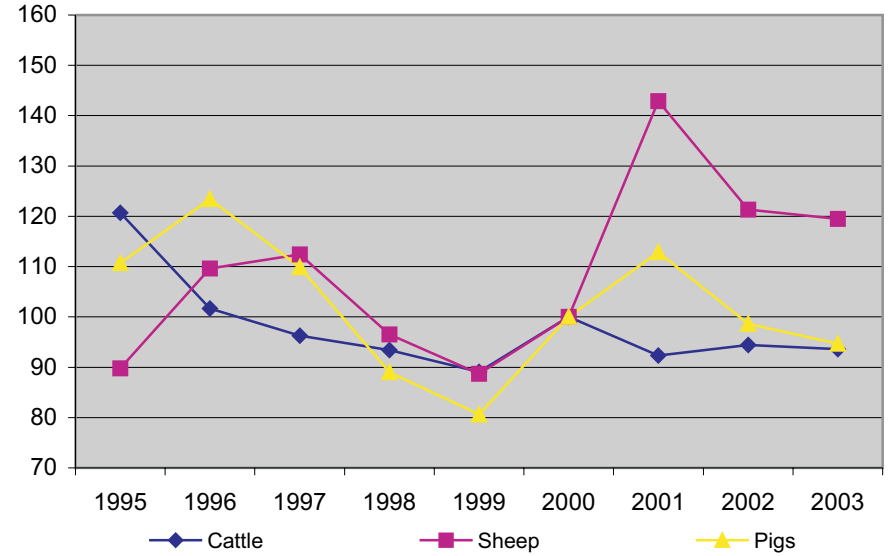
Appendix 1 describes the data sources used in compiling the output price index; and Appendix 2 describes the input price index data sources.

Selected Agricultural Output Price Index Series (base 2000 = 100)

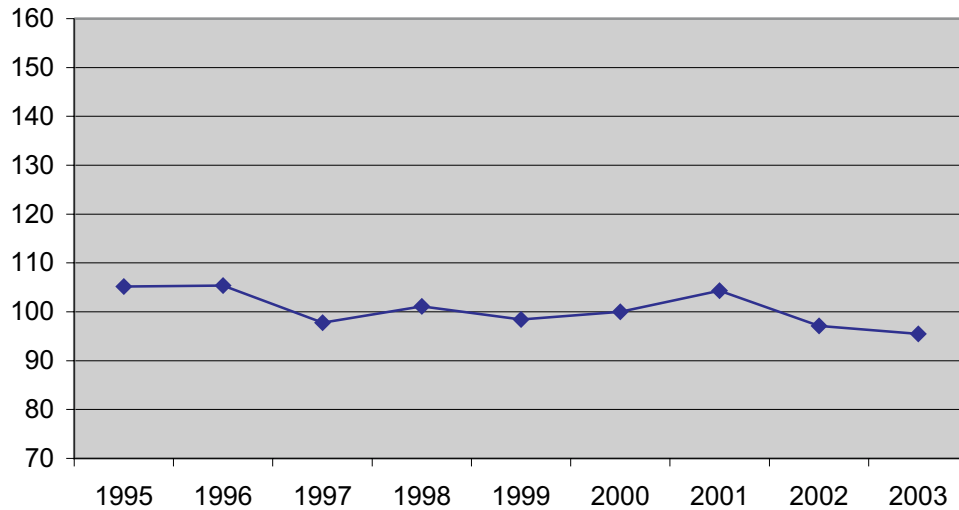
Total Outputs



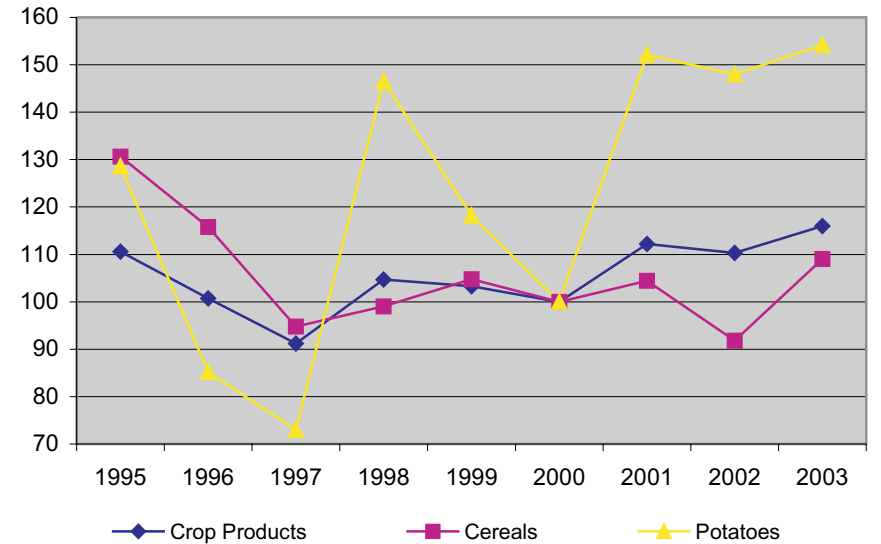
Cattle, Sheep and Pigs



Milk



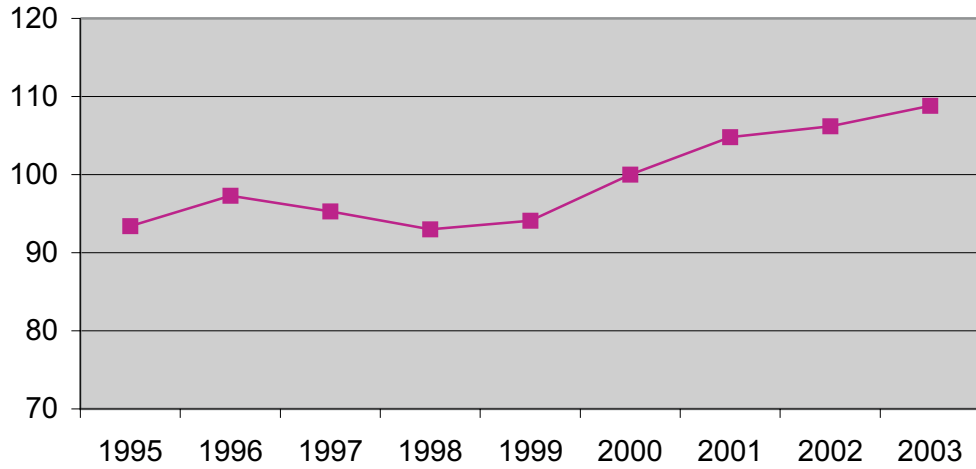
Crop Products, Cereals and Potatoes



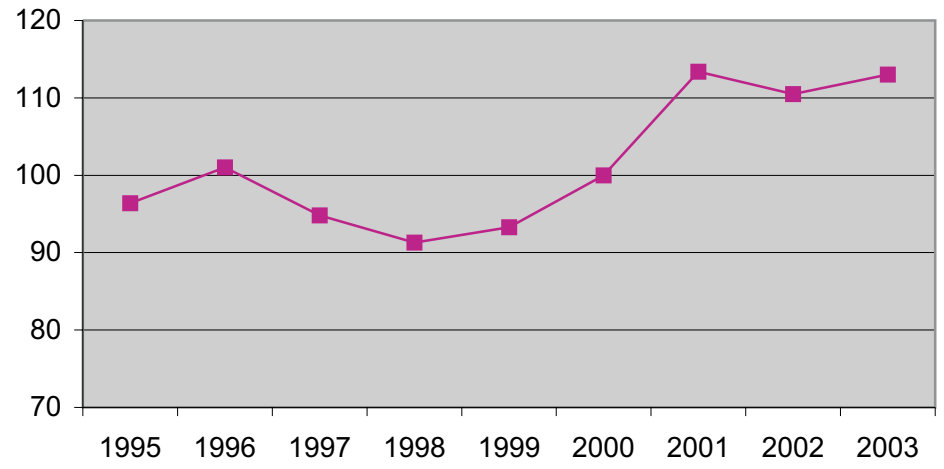
Selected Agricultural Input Price Index Series

(base 2000 = 100)

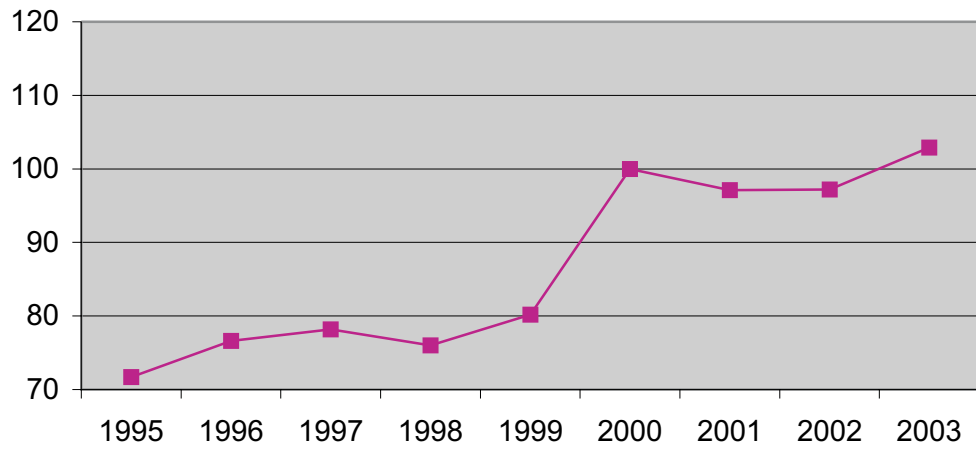
Total Inputs



Fertilizers



Energy



Feeding Stuffs

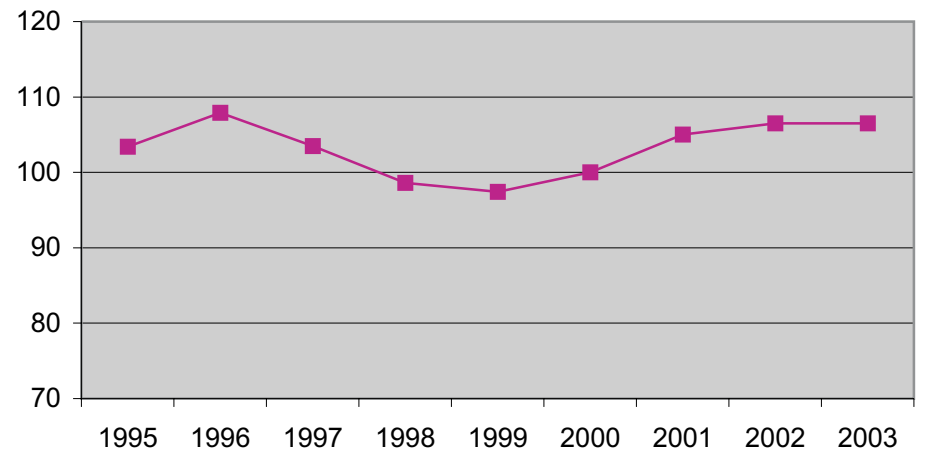


Table 1 Agricultural Output Price Index¹, 1995 - 2003

Base year 2000=100

Period	Total outputs index	Livestock								Livestock products		Livestock and livestock products	Crop products				
		Finished cattle	Cows for slaughter	Store cattle	Total cattle	Sheep	Pigs	Poultry	Total	Milk	Total		Cereals	Sugar beet	Potatoes	Vegetables	Total
1995	110.3	119.4	135.6	114.7	120.7	89.8	110.7	104.4	113.8	105.2	105.5	110.2	130.6	100.6	128.6	92.5	110.6
1996	105.3	101.0	108.7	99.1	101.7	109.6	123.4	105.9	106.2	105.4	105.6	105.9	115.8	96.0	85.2	96.3	100.7
1997	98.8	95.2	102.8	95.9	96.3	112.4	109.9	108.3	101.3	97.8	98.1	99.9	94.8	97.6	73.0	92.1	91.2
1998	98.0	93.4	98.8	89.6	93.4	96.5	89.0	104.0	94.0	101.1	101.1	97.0	99.0	98.6	146.5	97.8	104.7
1999	94.0	90.9	87.6	83.0	89.1	88.7	80.6	98.6	88.5	98.4	98.2	92.7	104.8	99.5	118.2	97.2	103.3
2000	100.0	100.0	100.0	100.0	100.0	100.0	100.0	100.0	100.0	100.0	100.0	100.0	100.0	100.0	100.0	100.0	100.0
2001	104.2	92.5	86.7	97.2	92.3	142.9	112.9	103.1	101.9	104.3	104.2	102.9	104.4	102.8	152.1	105.4	112.2
2002	99.9	95.2	83.2	100.7	94.4	121.3	98.6	105.5	98.9	97.1	97.0	98.1	91.8	103.8	148.0	114.9	110.4
2003	99.5	93.3	86.4	102.8	93.6	119.5	94.7	105.6	97.6	95.5	95.6	96.8	109.0	103.8	154.2	110.0	116.0
1995 January	108.3	118.4	132.7	114.8	119.9	108.0	97.1	96.6	113.4	102.6	102.9	108.9	117.0	98.7	125.2	88.9	104.2
February	110.3	120.2	134.1	117.3	121.5	108.7	99.9	96.9	115.0	103.3	103.7	110.1	117.0	98.7	172.4	92.6	111.7
March	110.8	121.6	135.6	120.7	123.1	107.3	108.3	97.0	117.0	101.8	102.3	110.7	117.0	98.7	169.3	93.1	111.4
April	112.5	123.0	140.9	123.3	125.2	104.7	113.1	98.0	118.8	104.5	104.8	112.7	117.0	98.7	166.0	92.5	110.7
May	111.7	122.3	141.9	119.2	124.2	95.6	111.7	98.8	116.7	105.7	106.0	112.1	117.0	98.7	147.7	94.6	109.0
June	110.8	122.7	142.3	116.6	124.0	84.1	114.4	98.3	115.3	105.3	105.6	111.1	117.0	98.7	151.3	93.1	108.9
July	108.6	119.0	134.5	112.3	119.8	77.6	110.9	98.1	111.1	104.3	104.5	108.3	117.0	98.7	164.1	95.0	111.2
August	107.8	118.6	134.3	111.7	119.5	75.7	112.6	97.9	110.9	104.1	104.3	108.1	130.6	98.7	82.0	98.5	106.3
September	108.2	116.6	132.4	108.3	117.4	79.6	113.4	98.3	110.2	105.2	105.4	108.1	130.6	100.6	110.0	94.2	108.6
October	109.1	117.3	131.4	109.8	118.0	85.3	115.2	98.0	111.6	106.6	106.7	109.5	130.6	100.6	105.3	89.2	106.1
November	110.1	117.5	129.2	110.3	118.1	90.5	116.3	98.4	112.6	108.3	108.4	110.8	130.6	100.6	99.3	87.9	105.1
December	110.2	115.3	122.3	107.2	115.0	94.1	116.4	122.5	112.8	108.3	108.4	110.9	130.6	100.6	91.7	90.5	105.1

¹ Excluding VAT

Table 1 Agricultural Output Price Index¹, 1995 - 2003

Base year 2000=100

Period	Total outputs index	Livestock								Livestock products		Livestock and livestock products	Crop products					
		Finished cattle	Cows for slaughter	Store cattle	Total cattle	Sheep	Pigs	Poultry	Total	Milk	Total		Cereals	Sugar beet	Potatoes	Vegetables	Total	
1996	January	110.6	112.2	122.6	109.8	113.3	98.0	119.6	100.5	111.2	110.9	111.0	111.1	130.6	100.6	91.2	95.8	106.9
	February	112.2	112.9	124.2	113.5	114.5	108.1	128.1	100.4	114.6	110.1	110.3	112.7	130.6	100.6	83.2	102.3	108.2
	March	112.8	112.4	124.2	113.1	114.0	118.9	121.8	100.5	114.9	110.3	110.6	113.0	130.6	100.6	80.1	111.2	111.1
	April	109.5	104.2	115.6	108.8	106.4	135.5	124.2	100.1	112.6	105.0	105.3	109.4	130.6	100.6	72.2	111.5	110.0
	May	108.0	103.4	112.7	105.6	104.8	124.3	126.0	100.0	110.2	104.8	105.1	108.0	130.6	100.6	72.1	107.2	108.3
	June	106.3	103.0	107.2	103.7	103.4	105.6	132.5	100.2	107.6	104.1	104.4	106.3	130.6	100.6	73.8	101.6	106.4
	July	104.6	99.3	101.8	95.3	98.9	93.0	128.0	100.0	102.2	103.7	104.0	103.0	130.6	100.6	158.9	97.1	115.6
	August	100.4	92.8	97.0	89.3	92.7	95.7	124.4	99.8	98.1	103.4	103.7	100.5	115.8	100.6	86.8	91.2	99.4
	September	100.8	91.7	99.5	89.8	92.4	102.6	126.8	99.6	99.2	104.4	104.7	101.5	115.8	96.0	69.3	89.7	95.8
	October	98.9	90.8	97.9	87.4	91.0	102.2	124.4	99.9	97.9	102.3	102.6	99.9	115.8	96.0	51.3	85.3	91.8
	November	101.1	93.6	96.2	92.8	93.7	118.8	113.8	100.5	100.6	103.9	104.2	102.1	115.8	96.0	63.2	85.5	93.4
	December	105.1	102.2	99.4	93.0	100.5	126.9	111.4	122.1	107.2	105.7	105.9	106.7	115.8	96.0	66.6	87.0	94.4
1997	January	101.2	98.0	99.3	94.2	97.7	127.9	106.8	101.2	103.5	100.0	100.4	102.1	115.8	96.0	58.0	90.2	94.6
	February	100.2	96.5	100.1	94.3	96.5	122.8	101.4	101.5	101.3	100.6	100.9	101.1	115.8	96.0	50.0	90.1	93.6
	March	100.2	97.3	100.1	100.6	98.1	127.8	106.0	101.5	103.6	98.0	98.4	101.4	115.8	96.0	46.4	86.0	91.6
	April	99.2	93.2	102.2	99.1	95.3	122.1	112.6	101.4	102.0	97.2	97.6	100.1	115.8	96.0	47.8	89.9	93.2
	May	100.8	91.9	103.5	100.8	94.7	118.5	133.7	101.3	104.0	97.6	97.8	101.3	115.8	96.0	69.6	92.9	97.2
	June	100.3	93.7	107.2	100.7	96.5	108.1	127.5	101.4	102.8	96.1	96.4	100.1	115.8	96.0	89.6	98.3	101.9
	July	100.2	98.4	108.8	97.2	99.6	106.1	113.4	101.9	102.6	96.0	96.3	99.9	115.8	96.0	92.3	98.9	102.4
	August	98.0	95.8	107.6	96.6	97.5	111.8	109.1	101.0	101.4	95.8	96.1	99.1	94.8	96.0	59.6	94.9	90.3
	September	98.4	94.5	104.6	91.7	95.5	112.5	102.3	100.4	99.2	98.6	98.8	99.0	94.8	97.6	90.1	92.7	93.7
	October	97.6	93.8	99.3	92.6	94.4	108.4	103.9	99.1	98.0	98.6	98.8	98.4	94.8	97.6	84.5	91.2	92.5
	November	98.5	95.6	98.4	90.3	95.2	103.7	102.2	101.0	97.8	101.5	101.6	99.5	94.8	97.6	80.6	89.9	91.5
	December	97.5	94.0	89.5	88.1	92.6	95.9	98.7	128.6	96.3	101.0	101.1	98.4	94.8	97.6	81.2	89.1	91.3
1998	January	98.2	93.4	90.5	91.1	92.8	93.8	97.4	101.2	94.1	104.6	104.7	98.7	94.8	97.6	87.8	95.4	94.6
	February	98.1	96.7	94.1	93.9	96.0	86.8	100.6	100.5	95.6	101.8	101.9	98.3	94.8	97.6	98.7	96.3	96.4
	March	98.5	99.6	99.5	98.8	99.5	92.9	101.7	100.9	98.9	98.6	98.8	98.9	94.8	97.6	98.5	93.7	95.6
	April	100.0	99.6	103.7	97.8	99.8	103.6	98.5	100.2	100.2	99.6	99.6	99.9	94.8	97.6	134.0	95.4	100.8
	May	102.1	100.8	106.7	96.0	100.6	113.9	95.5	100.8	101.8	100.5	100.6	101.3	94.8	97.6	176.5	99.5	108.0
	June	102.1	102.1	109.0	93.4	101.4	114.7	94.0	100.8	102.2	100.3	100.4	101.4	94.8	97.6	165.3	100.7	107.0
	July	100.6	98.7	103.1	90.4	97.7	109.9	90.1	100.8	98.6	100.3	100.3	99.3	94.8	97.6	186.7	99.9	109.4
	August	98.0	95.1	100.8	88.0	94.6	103.7	84.2	100.8	94.8	100.0	99.8	97.0	99.0	97.6	138.7	102.5	105.5
	September	95.5	89.8	96.6	83.6	89.7	87.8	79.1	92.6	88.1	102.0	101.8	94.0	99.0	98.6	152.3	97.9	105.7
	October	92.8	85.1	91.5	80.6	85.1	79.4	76.4	91.7	83.5	101.8	101.6	91.3	99.0	98.6	128.8	98.6	102.9
	November	92.0	83.6	85.3	76.2	82.5	72.4	76.5	90.9	80.8	102.6	102.4	90.1	99.0	98.6	154.5	96.3	105.5
	December	92.8	84.0	80.5	74.5	82.0	73.3	74.4	115.4	81.9	102.6	102.3	90.8	99.0	98.6	171.2	96.4	107.7

¹ Excluding VAT

Table 1 Agricultural Output Price Index¹, 1995 - 2003

Base year 2000=100

Period	Total outputs index	Livestock								Livestock products		Livestock and livestock products	Crop products					
		Finished cattle	Cows for slaughter	Store cattle	Total cattle	Sheep	Pigs	Poultry	Total	Milk	Total		Cereals	Sugar beet	Potatoes	Vegetables	Total	
1999	January	93.2	84.7	80.6	75.8	82.8	76.3	71.5	91.0	80.9	104.1	103.9	90.8	99.0	98.6	181.5	99.3	110.3
	February	93.6	85.5	80.7	80.6	84.0	87.4	70.8	90.6	83.1	102.1	101.9	91.2	99.0	98.6	182.4	100.4	111.0
	March	95.4	90.6	87.1	87.0	89.4	99.0	73.5	92.0	88.7	99.4	99.2	93.2	99.0	98.6	182.4	100.1	110.7
	April	95.6	94.0	93.0	88.4	92.8	100.2	74.8	92.3	91.3	97.5	97.2	93.8	99.0	98.6	173.6	96.7	108.3
	May	95.9	93.3	93.8	85.3	91.9	110.2	76.0	92.7	92.3	97.1	97.0	94.3	99.0	98.6	161.0	98.1	107.1
	June	94.9	95.5	95.0	82.2	93.3	101.0	81.2	90.6	92.5	97.0	96.8	94.3	99.0	98.6	112.1	92.6	98.6
	July	94.3	94.6	90.7	82.0	92.1	87.2	87.6	92.7	90.8	96.4	96.2	93.1	99.0	98.6	132.2	95.7	102.4
	August	93.1	91.9	86.1	79.8	89.3	79.8	86.6	89.9	87.6	98.2	98.1	92.2	104.8	98.6	83.1	100.0	99.5
	September	92.8	91.2	85.8	81.4	88.8	77.1	88.3	90.2	87.2	98.2	98.0	91.9	104.8	99.5	91.8	96.8	99.6
	October	92.0	90.2	82.9	78.7	87.4	75.1	86.3	90.7	85.7	98.5	98.4	91.2	104.8	99.5	76.2	97.2	97.7
	November	92.6	90.7	82.2	82.4	88.3	79.1	85.2	91.7	86.8	99.5	99.4	92.2	104.8	99.5	68.1	95.5	95.3
	December	93.9	91.2	80.0	81.9	88.4	84.0	84.7	118.7	89.3	99.8	99.7	93.8	104.8	99.5	62.4	94.0	94.4
2000	January	95.7	95.0	79.9	87.1	92.4	95.1	88.9	101.6	92.8	99.8	99.8	95.7	104.7	99.5	69.0	96.4	95.7
	February	97.2	97.2	85.8	91.7	95.0	114.3	86.4	100.7	96.4	98.6	98.7	97.4	104.7	99.5	65.3	98.4	96.1
	March	98.1	97.8	89.4	95.3	96.3	120.6	92.9	100.9	98.9	97.9	97.9	98.5	104.7	99.5	62.9	98.1	95.5
	April	99.0	99.4	98.1	97.4	99.0	120.9	98.3	99.3	101.5	96.7	96.8	99.5	104.7	99.5	67.1	98.3	95.9
	May	101.1	103.1	109.0	103.0	103.9	106.8	101.5	100.4	103.6	97.2	97.4	101.0	104.7	99.5	96.2	101.5	101.3
	June	103.0	108.1	116.4	105.3	108.9	96.7	106.1	99.7	106.5	98.0	98.0	102.9	104.7	99.5	109.6	101.1	103.1
	July	102.2	105.4	111.6	103.9	106.2	90.1	105.8	99.3	103.8	99.3	99.3	101.9	104.7	99.5	115.9	101.6	104.2
	August	101.3	104.3	111.2	104.2	105.5	91.2	101.7	99.4	102.9	100.5	100.5	101.9	100.0	99.5	74.5	103.7	97.4
	September	103.5	103.8	111.2	103.5	105.1	92.3	101.8	99.2	102.8	102.9	102.9	102.8	100.0	100.0	146.7	102.0	107.7
	October	102.1	99.6	102.7	101.7	100.6	92.2	103.7	99.3	99.9	103.9	103.9	101.6	100.0	100.0	140.5	99.0	105.2
	November	102.1	96.7	86.5	96.7	95.7	99.4	107.9	99.6	98.2	105.9	105.8	101.3	100.0	100.0	142.3	99.8	107.0
	December	100.0	89.4	70.9	92.9	87.5	107.3	108.1	100.4	93.6	106.7	106.5	99.0	100.0	100.0	139.9	99.6	106.5
2001	January	105.5	100.4	86.6	104.4	99.2	122.6	107.4	100.9	103.3	107.2	107.0	104.8	100.0	100.0	161.9	101.9	110.0
	February	103.9	95.0	86.7	95.4	93.8	136.7	112.8	100.8	102.0	104.0	103.9	102.8	100.0	100.0	151.7	104.9	110.3
	March	106.4	96.6	88.0	97.6	95.4	154.8	124.0	102.4	106.9	104.0	103.8	105.6	100.0	100.0	151.9	106.8	111.3
	April	104.7	97.4	91.6	98.1	96.6	147.5	115.0	102.9	105.6	101.2	101.2	103.8	100.0	100.0	146.3	105.7	110.4
	May	106.5	95.7	90.6	96.5	95.1	156.8	120.0	102.8	106.4	103.3	103.3	105.2	100.0	100.0	144.4	122.8	114.5
	June	105.8	96.2	89.3	102.8	96.0	141.7	121.2	104.9	105.6	104.0	103.9	104.9	100.0	100.0	141.6	113.5	111.5
	July	105.6	94.9	86.1	96.4	94.1	134.9	117.8	104.2	102.9	103.6	103.5	103.2	100.0	100.0	222.3	106.5	120.5
	August	100.3	87.5	83.4	92.7	87.7	131.2	112.4	103.7	97.4	103.3	103.2	99.8	104.4	100.0	100.0	102.5	103.5
	September	103.2	88.7	87.1	94.4	89.1	136.6	107.7	102.5	98.3	106.0	105.9	101.4	104.4	102.8	166.3	105.0	113.8
	October	101.5	86.2	82.9	95.6	86.8	140.6	106.6	104.8	97.2	105.0	104.9	100.4	104.4	102.8	141.8	100.5	108.3
	November	102.0	87.0	82.2	99.1	87.8	154.2	104.0	103.6	98.9	105.1	105.0	101.5	104.4	102.8	122.4	99.0	105.3
	December	102.0	88.3	81.8	100.6	89.0	162.4	104.3	103.6	100.8	102.9	102.8	101.6	104.4	102.8	112.2	100.6	104.4

¹ Excluding VAT

Table 1 Agricultural Output Price Index¹, 1995 - 2003

Base year 2000=100

Period	Total outputs index	Livestock								Livestock products		Livestock and livestock products	Crop products					
		Finished cattle	Cows for slaughter	Store cattle	Total cattle	Sheep	Pigs	Poultry	Total	Milk	Total		Cereals	Sugar beet	Potatoes	Vegetables	Total	
2002	January	105.2	99.2	90.8	108.5	99.6	161.8	97.9	104.2	106.9	103.1	103.0	105.3	104.4	102.8	107.3	104.4	104.8
	February	103.7	101.5	90.9	109.8	101.0	135.0	94.5	106.4	104.5	101.2	101.2	103.1	104.4	102.8	110.5	109.4	107.2
	March	103.0	99.5	88.9	110.0	99.1	135.2	99.4	104.8	103.8	99.3	99.2	101.9	104.4	102.8	116.3	113.8	109.7
	April	101.9	98.7	92.0	109.7	99.2	134.6	100.2	105.8	103.9	95.6	95.6	100.5	104.4	102.8	122.2	111.4	110.2
	May	101.8	98.3	91.6	107.1	98.5	134.2	102.0	105.5	103.7	95.1	95.1	100.1	104.4	102.8	139.5	109.9	112.2
	June	101.7	98.2	86.7	101.0	97.1	122.3	104.4	105.7	101.7	94.7	94.7	98.8	104.4	102.8	199.0	107.0	119.6
	July	99.2	94.7	81.4	94.9	93.0	105.6	103.6	105.2	96.8	94.5	94.6	95.9	104.4	102.8	170.1	116.8	118.9
	August	97.3	91.8	78.5	96.0	90.7	110.0	97.5	104.6	94.9	94.9	95.0	94.9	91.8	102.8	114.7	131.2	111.5
	September	99.9	90.8	77.8	94.2	89.9	114.0	96.2	105.2	94.6	97.7	97.7	95.9	91.8	103.8	214.4	125.2	123.8
	October	98.4	89.8	75.1	95.1	88.9	110.8	96.0	104.5	93.5	97.8	97.8	95.3	91.8	103.8	170.8	123.4	116.9
	November	98.0	89.7	65.0	95.3	87.5	113.4	96.0	103.4	92.8	99.2	99.2	95.5	91.8	103.8	176.2	110.2	113.2
	December	99.7	91.9	66.0	97.2	89.6	114.6	96.2	106.6	94.6	100.9	100.9	97.2	91.8	103.8	184.5	111.2	114.9
2003	January	102.0	95.3	77.8	102.7	94.3	120.4	95.4	106.3	98.3	101.9	102.0	99.8	91.8	103.8	185.1	110.7	114.7
	February	101.0	94.9	83.7	104.1	94.4	120.7	95.8	105.6	98.5	98.8	99.0	98.7	91.8	103.8	183.2	111.5	114.7
	March	100.1	92.7	85.7	102.0	92.8	124.3	95.7	106.8	97.9	97.3	97.4	97.7	91.8	103.8	184.7	111.4	114.8
	April	100.3	93.0	87.4	105.4	93.8	143.1	96.0	104.8	100.6	93.8	93.9	97.9	91.8	103.8	188.0	109.8	114.8
	May	99.8	92.4	89.1	102.4	93.3	148.8	93.7	107.7	100.8	93.6	93.8	97.9	91.8	103.8	169.1	107.1	111.1
	June	98.3	95.0	93.8	103.1	95.9	126.8	91.7	105.3	99.5	93.6	93.8	97.1	91.8	103.8	138.5	103.3	105.4
	July	97.4	94.3	90.6	104.4	95.1	111.3	90.5	103.7	96.9	93.4	93.5	95.5	91.8	103.8	157.2	104.6	108.5
	August	97.0	93.9	88.3	103.6	94.4	111.6	89.7	104.4	96.4	93.8	94.0	95.4	109.0	103.8	80.9	113.1	106.7
	September	99.3	91.1	85.3	99.9	91.6	108.5	93.4	105.4	94.8	96.2	96.4	95.4	109.0	103.8	177.2	119.2	122.5
	October	98.4	91.4	83.3	101.7	91.7	105.9	97.0	105.4	95.0	96.3	96.5	95.6	109.0	103.8	146.8	110.3	115.0
	November	99.0	93.4	82.2	101.1	93.0	105.3	98.9	105.9	96.1	97.4	97.5	96.7	109.0	103.8	130.7	109.8	112.5
	December	99.8	96.7	83.9	105.8	96.3	105.2	98.1	109.9	98.5	98.2	98.3	98.4	109.0	103.8	109.4	108.0	108.4

¹ Excluding VAT

Table 2 Agricultural Input Price Index¹, 1995 - 2003

Base year 2000=100

Period	Total inputs index	Feeding stuffs						Fertilizers					Seeds	Energy			Plant protection products	Veterinary expenses (incl. AI)	Other inputs ²
		Straight	Compound				All	Straight	Compound		All	Motor fuels		Electricity	All energy				
			Calf	Cattle	Pig	Poultry			NPK	PK									
1995	93.4	106.0	108.3	106.0	99.5	98.9	103.4	97.5	98.3	88.5	96.4	98.0	66.0	96.0	71.7	97.5	85.8	90.3	
1996	97.3	109.3	111.9	110.7	104.8	102.8	107.9	102.0	102.5	92.7	101.0	103.4	71.8	97.5	76.6	100.8	89.3	91.2	
1997	95.3	104.9	107.7	104.4	101.4	102.0	103.5	93.7	96.4	88.7	94.8	100.5	73.5	99.4	78.2	100.4	92.3	92.7	
1998	93.0	98.8	100.8	98.3	97.7	99.8	98.6	88.1	93.4	88.5	91.3	102.0	70.5	100.0	75.9	100.8	94.7	93.6	
1999	94.1	97.1	97.9	96.5	97.7	99.2	97.4	89.9	94.5	96.3	93.3	102.1	75.6	100.0	80.2	100.6	95.9	95.9	
2000	100.0	100.0	100.0	100.0	100.0	100.0	100.0	100.0	100.0	100.0	100.0	100.0	100.0	100.0	100.0	100.0	100.0	100.0	
2001	104.8	102.0	103.9	106.4	104.1	104.1	105.0	118.6	111.6	104.5	113.4	103.7	95.8	101.5	97.1	100.8	104.7	105.9	
2002	106.1	102.8	105.8	107.8	106.2	105.4	106.5	115.5	108.4	103.3	110.5	107.3	94.7	105.9	97.1	101.6	109.4	110.4	
2003	108.8	102.9	106.8	107.7	105.5	106.3	106.5	117.4	111.5	105.0	113.0	115.2	99.1	119.6	102.9	101.6	114.7	114.1	
1995	January	92.4	104.1	109.6	105.1	99.2	98.7	102.8	94.4	96.5	87.3	94.4	98.3	64.3	96.0	70.4	95.5	84.9	89.5
	February	92.6	104.4	108.2	105.6	98.0	96.2	102.3	97.1	98.2	88.3	96.3	98.3	64.3	96.0	70.4	95.5	85.0	89.9
	March	93.0	104.5	108.4	105.5	101.7	97.6	103.3	96.8	97.4	87.6	95.6	98.3	64.8	96.0	70.9	96.7	85.0	89.9
	April	93.3	105.6	108.4	105.9	102.0	98.6	103.8	96.6	97.8	87.3	95.8	98.3	65.1	96.0	71.0	97.3	85.5	90.2
	May	93.4	105.5	109.1	106.4	98.2	99.7	103.5	96.7	97.6	86.7	95.7	98.3	66.4	96.0	72.1	97.7	85.6	90.2
	June	93.4	105.7	109.0	106.0	99.0	98.3	103.2	96.6	97.7	86.7	95.7	98.3	67.6	96.0	73.0	97.0	85.8	90.3
	July	93.2	106.0	107.4	105.4	98.8	98.3	102.8	96.6	97.7	86.7	95.7	98.3	66.6	96.0	72.1	97.1	86.1	90.3
	August	93.3	106.5	107.0	105.6	98.8	100.6	103.4	96.7	97.6	86.9	95.7	98.3	65.8	96.0	71.6	97.5	86.1	90.3
	September	93.6	106.7	107.5	105.7	98.9	100.3	103.5	97.4	98.6	88.9	96.6	98.3	67.0	96.0	72.4	97.4	86.1	90.2
	October	93.9	107.7	107.0	106.0	99.1	98.6	103.4	98.1	99.1	90.7	97.3	97.4	67.2	96.0	72.7	99.0	86.5	90.9
	November	94.1	107.2	107.2	106.7	99.0	99.7	103.9	100.0	100.0	92.1	98.5	97.4	66.0	96.0	71.7	99.5	86.4	91.0
	December	95.1	108.4	111.3	108.4	101.7	99.8	105.5	102.4	101.4	93.1	100.1	97.4	67.2	96.0	72.7	99.4	86.5	91.0

¹ Excluding VAT

² "Other inputs" includes maintenance and repairs, services other than veterinary and miscellaneous materials

Table 2 Agricultural Input Price Index¹, 1995 - 2003

Base year 2000=100

Period	Total inputs index	Feeding stuffs						Fertilizers					Seeds	Energy			Plant protection products	Veterinary expenses (incl. AI)	Other inputs ²
		Straight	Compound				All	Straight	Compound		All	Motor fuels		Elec-tricity	All energy				
			Calf	Cattle	Pig	Poultry			NPK	PK									
1996	January	96.1	109.3	111.6	109.5	102.5	100.5	106.4	103.2	102.8	93.7	101.2	103.8	68.4	96.0	73.7	99.5	86.9	90.9
	February	96.6	108.8	113.1	110.9	102.9	102.0	107.5	104.1	103.6	93.2	101.9	103.8	68.8	96.0	74.0	99.9	86.9	90.8
	March	96.8	108.8	113.2	110.9	102.7	102.2	107.5	103.6	103.2	92.8	101.5	103.8	70.1	96.0	75.0	100.5	87.6	90.9
	April	96.9	109.2	111.0	109.5	103.1	102.4	106.9	103.4	103.0	93.2	101.4	103.8	71.3	96.0	76.0	101.7	89.7	90.9
	May	97.7	110.6	111.7	111.0	106.0	103.6	108.5	103.0	103.0	92.7	101.7	103.8	72.4	97.2	77.0	101.5	89.8	91.0
	June	97.9	111.7	113.4	112.1	106.0	104.5	109.4	102.3	102.8	92.6	101.5	103.8	70.8	98.3	75.9	101.3	89.9	91.2
	July	97.8	111.1	113.3	112.9	106.2	104.8	109.8	101.7	102.6	92.9	101.1	103.8	69.2	98.3	74.6	101.2	90.1	91.2
	August	97.9	111.3	113.1	113.3	106.0	104.6	110.0	101.2	102.2	93.2	100.8	103.8	70.6	98.3	75.7	100.9	90.1	91.1
	September	97.8	108.9	112.9	112.8	105.7	103.1	109.2	100.5	102.0	92.2	100.4	103.8	72.3	98.3	77.1	100.9	90.1	91.1
	October	97.4	107.8	109.6	108.7	106.5	101.2	106.8	100.6	101.8	92.2	100.3	102.6	76.0	98.3	80.1	100.8	90.1	91.6
	November	97.4	107.3	109.7	108.7	105.4	102.2	106.7	100.3	101.6	92.0	100.1	102.6	76.8	98.3	80.8	100.8	90.0	91.6
	December	97.0	107.1	109.8	108.5	104.5	102.1	106.4	100.1	101.3	92.1	99.9	102.6	74.7	98.3	79.1	100.7	89.9	91.8
1997	January	96.9	107.5	109.2	108.3	104.2	102.2	106.3	99.4	101.3	91.4	99.5	101.0	74.4	98.3	78.8	100.8	90.4	91.7
	February	96.5	107.5	108.8	106.4	104.0	102.1	105.3	98.3	99.6	89.5	98.1	101.0	75.5	98.3	79.7	100.8	90.5	92.1
14	March	96.2	108.5	110.5	106.2	103.4	102.2	105.3	96.8	98.0	89.0	96.7	101.0	73.5	98.3	78.0	101.5	92.2	92.5
	April	96.1	108.3	110.9	106.3	103.2	102.2	105.3	96.6	97.3	88.6	96.2	101.0	72.8	98.3	77.4	100.8	92.5	92.7
	May	96.0	105.3	110.7	106.4	104.0	103.8	105.5	95.2	96.7	88.9	95.5	101.0	72.1	99.2	77.0	100.2	92.8	92.6
	June	95.9	105.6	110.6	106.4	103.0	102.9	105.2	94.0	96.0	88.8	94.7	101.0	73.1	100.0	77.9	100.0	92.8	92.7
	July	95.7	106.2	110.5	106.9	102.5	103.4	105.4	92.5	95.3	88.8	93.8	101.0	72.0	100.0	77.1	100.0	92.8	92.8
	August	95.3	104.4	108.5	106.2	101.8	102.4	104.5	90.8	94.8	88.5	93.0	101.0	72.1	100.0	77.1	100.1	92.8	92.9
	September	93.9	102.5	105.3	100.2	97.9	102.4	100.6	89.7	93.9	88.3	92.1	101.0	73.9	100.0	78.5	100.3	92.7	92.9
	October	93.8	101.1	102.5	100.2	97.7	100.2	99.9	90.3	95.0	87.7	92.9	99.6	73.9	100.0	78.7	100.2	92.7	93.0
	November	93.7	100.9	102.3	99.6	97.6	100.2	99.5	90.6	94.7	87.5	92.7	99.6	74.6	100.0	79.2	100.2	92.5	93.0
	December	93.7	101.0	102.3	99.5	97.6	100.4	99.6	89.9	94.5	87.3	92.5	99.6	74.7	100.0	79.3	100.2	92.4	93.2
1998	January	93.6	100.7	102.4	98.9	97.5	100.7	99.3	89.4	94.5	86.4	92.2	102.4	73.7	100.0	78.5	100.3	92.8	93.1
	February	93.7	100.2	104.4	99.7	97.8	100.5	99.7	90.4	94.9	86.2	92.7	102.4	72.5	100.0	77.5	100.2	93.0	93.4
	March	93.9	101.3	104.5	99.8	98.4	100.8	100.1	89.7	94.7	85.8	92.4	102.4	72.1	100.0	77.2	100.9	94.8	93.4
	April	93.6	101.2	105.1	100.0	98.3	100.2	100.0	88.4	93.6	85.8	91.3	102.4	70.9	100.0	76.3	100.9	95.2	93.4
	May	93.4	99.0	104.3	99.2	99.3	99.5	99.5	87.2	92.7	85.8	90.5	102.4	71.2	100.0	76.6	101.1	95.1	93.6
	June	93.1	98.9	102.2	99.0	96.9	100.5	99.0	87.0	92.3	85.8	90.2	102.4	70.5	100.0	76.0	100.8	95.1	93.7
	July	93.0	99.3	101.2	98.6	96.9	100.9	98.9	87.8	92.7	86.4	90.7	102.4	69.8	100.0	75.5	100.8	95.2	93.6
	August	93.0	99.4	100.1	98.3	98.3	100.4	98.9	87.0	92.5	88.6	90.5	102.4	70.0	100.0	75.6	100.9	95.1	93.8
	September	92.5	97.4	98.3	97.0	97.4	99.7	97.7	87.3	92.6	90.0	90.8	102.4	68.8	100.0	74.6	100.9	95.1	93.9
	October	92.3	95.8	96.0	96.2	97.2	99.0	96.9	86.8	92.8	93.7	91.0	101.4	69.6	100.0	75.3	101.0	95.0	94.0
	November	92.3	96.2	95.9	96.4	97.2	98.4	96.9	88.1	93.4	94.0	91.8	101.4	68.7	100.0	74.6	101.2	94.8	93.6
	December	92.1	96.4	95.8	96.1	97.2	97.1	96.5	88.2	93.8	93.9	92.0	101.4	67.8	100.0	73.8	101.1	94.8	93.7

¹ Excluding VAT

² "Other inputs" includes maintenance and repairs, services other than veterinary and miscellaneous materials

Table 2 Agricultural Input Price Index¹, 1995 - 2003

Base year 2000=100

Period	Total inputs index	Feeding stuffs							Fertilizers			Seeds	Energy			Plant protection products	Veterinary expenses (incl. AI)	Other inputs ²	
		Straight	Compound				All	Straight	Compound		All		Motor fuels	Elec-tricity	All energy				
			Calf	Cattle	Pig	Poultry			NPK	PK									
1999	January	92.4	97.3	97.6	96.2	96.9	98.6	97.0	90.9	94.6	95.4	93.6	102.5	66.5	100.0	72.8	101.1	95.0	93.8
	February	92.8	94.8	98.7	96.5	97.9	98.5	97.1	91.7	95.2	96.4	94.3	102.5	67.2	100.0	73.4	101.1	95.1	94.3
	March	93.2	97.3	98.7	96.7	97.4	98.9	97.4	91.5	95.2	96.4	94.2	102.5	68.6	100.0	74.5	101.1	95.6	94.8
	April	93.6	97.6	98.2	96.3	98.3	99.1	97.5	90.6	94.7	96.3	93.6	102.5	71.9	100.0	77.1	100.7	96.1	95.4
	May	94.0	97.3	98.2	96.7	98.9	98.7	97.6	90.4	94.8	96.4	93.6	102.5	73.0	100.0	78.0	100.7	96.1	96.3
	June	93.8	97.9	98.2	96.6	98.0	99.6	97.7	90.0	94.5	96.3	93.3	102.5	72.5	100.0	77.7	100.4	96.1	96.0
	July	94.3	99.5	98.1	96.0	97.8	99.9	97.5	89.3	94.2	96.2	93.0	102.5	77.6	100.0	81.7	100.4	96.2	96.0
	August	94.4	98.1	98.3	95.9	97.5	99.4	97.2	89.1	94.1	96.1	92.8	102.5	78.5	100.0	82.5	100.4	96.2	96.5
	September	94.8	97.7	99.1	96.4	97.5	99.8	97.5	88.7	93.9	96.4	92.6	102.5	81.0	100.0	84.6	100.4	96.2	96.4
	October	94.9	96.5	99.7	96.6	97.3	99.7	97.5	88.8	94.1	96.2	92.7	101.5	82.2	100.0	85.6	100.4	96.4	96.6
	November	94.8	95.8	95.0	96.6	97.4	99.3	97.1	88.2	93.9	96.1	92.4	101.5	82.3	100.0	85.7	100.3	96.2	96.8
	December	95.8	95.9	95.3	97.8	97.2	99.1	97.6	89.8	94.6	97.0	93.4	101.5	86.5	100.0	89.1	100.3	96.1	97.8
2000	January	96.6	97.5	98.1	98.5	98.1	97.6	98.1	94.2	96.3	97.4	95.8	100.2	88.5	100.0	90.7	100.6	98.9	97.7
	February	97.4	97.8	98.9	98.9	98.9	98.8	98.8	95.6	97.5	97.9	97.0	100.2	90.4	100.0	92.2	100.6	99.1	98.4
	March	98.2	98.0	98.7	99.1	99.0	98.9	98.9	95.6	97.8	97.9	97.1	100.2	94.8	100.0	95.8	100.3	99.4	98.7
	April	98.3	98.4	99.0	98.9	99.0	98.9	98.9	96.4	98.0	98.1	97.6	100.2	94.5	100.0	95.6	100.1	100.2	99.2
	May	98.1	100.3	99.3	98.4	99.1	97.7	98.6	97.8	98.9	98.4	98.5	100.2	92.6	100.0	93.9	100.1	100.2	99.1
	June	99.2	100.7	100.1	98.9	99.9	99.9	99.5	99.0	99.3	98.6	99.2	100.2	97.6	100.0	97.8	99.8	100.2	99.4
	July	99.7	100.6	100.1	99.7	100.1	99.3	99.8	98.4	99.1	98.4	98.9	100.2	99.9	100.0	100.0	99.7	100.3	99.7
	August	100.2	100.8	101.5	100.5	100.4	101.0	100.6	98.7	99.1	99.3	99.0	100.2	99.8	100.0	100.0	99.7	100.4	100.6
	September	101.9	100.9	100.5	100.2	100.8	101.3	100.6	98.8	99.0	100.1	99.0	100.2	111.0	100.0	108.8	99.7	100.3	101.2
	October	102.8	102.5	101.7	101.4	101.1	101.7	101.5	102.9	101.1	102.8	101.7	99.0	111.6	100.0	109.3	99.8	100.5	101.7
	November	103.6	101.6	100.3	102.1	101.4	101.9	101.8	108.5	106.1	105.2	106.6	99.0	111.3	100.0	109.3	99.8	100.3	102.0
	December	104.0	101.0	101.7	103.4	102.0	103.0	102.8	114.2	107.8	105.9	109.6	99.0	108.1	100.0	106.6	99.8	100.2	102.1
2001	January	103.9	101.2	102.4	104.0	102.8	103.7	103.4	118.5	112.1	105.0	113.7	103.9	98.8	100.0	99.3	100.5	102.2	103.0
	February	103.8	101.5	103.3	104.5	103.0	103.8	103.7	120.6	114.0	104.8	115.4	103.9	94.3	100.0	95.6	100.4	102.2	103.6
	March	104.3	101.5	103.3	105.0	103.0	103.8	103.9	120.4	113.8	104.8	115.3	103.9	96.0	100.0	96.9	100.6	104.1	104.4
	April	104.5	101.5	104.2	105.0	103.4	103.8	104.1	121.1	113.6	104.9	115.5	103.9	95.0	100.0	96.1	100.6	104.8	105.4
	May	105.2	102.1	102.5	105.1	104.6	103.8	104.4	119.6	112.2	104.8	114.1	103.9	99.6	100.0	99.7	100.6	104.8	106.2
	June	105.4	102.3	103.1	105.2	103.9	104.4	104.4	117.9	110.9	104.3	112.8	103.9	101.9	100.0	101.6	100.9	104.7	106.2
	July	105.7	102.0	105.0	107.5	104.4	105.1	105.8	117.5	110.5	104.3	112.5	103.9	100.0	100.0	100.1	100.9	105.2	106.6
	August	105.2	102.3	103.9	108.3	104.4	104.9	106.1	117.0	110.4	104.4	112.2	103.9	95.6	100.0	96.7	100.9	105.2	106.9
	September	105.1	102.6	104.5	108.4	104.6	104.5	106.2	117.1	109.9	103.9	111.9	103.9	95.0	100.0	96.4	101.1	105.2	106.9
	October	105.1	102.2	104.3	107.9	105.1	104.5	106.0	117.5	110.4	104.2	112.4	103.2	93.4	105.9	96.1	101.1	105.9	107.1
	November	104.6	102.3	104.7	107.8	105.1	103.7	105.8	117.6	110.5	104.3	112.5	103.2	90.3	105.9	93.6	101.1	105.8	107.2
	December	104.7	102.3	105.2	108.2	105.3	103.8	106.1	117.9	110.7	104.2	112.7	103.2	89.5	105.9	92.9	101.1	105.7	107.6

¹ Excluding VAT

² "Other inputs" includes maintenance and repairs, services other than veterinary and miscellaneous materials

Table 2 Agricultural Input Price Index¹, 1995 - 2003

Base year 2000=100

Period	Total inputs index	Feeding stuffs						Fertilizers					Seeds	Energy			Plant protection products	Veterinary expenses (incl. AI)	Other inputs ²	
		Straight	Compound				All	Straight	Compound		All	Motor fuels		Elec-tricity	All energy					
			Calf	Cattle	Pig	Poultry			NPK	PK										
2002	January	105.0	104.0	106.3	108.4	105.6	104.3	106.6	118.2	111.0	103.3	113.0	107.7	87.9	105.9	91.7	101.2	106.4	108.3	
	February	105.0	104.1	106.3	108.2	105.6	104.1	106.4	118.0	110.9	103.4	112.9	107.7	88.7	105.9	92.3	101.6	106.5	108.3	
	March	105.4	104.1	106.3	108.2	105.6	104.2	106.4	117.1	109.8	103.2	111.9	107.7	90.7	105.9	93.9	101.3	108.5	108.5	
	April	106.3	104.2	105.9	108.2	106.6	105.1	106.8	117.0	109.6	103.3	111.7	107.7	95.1	105.9	97.4	101.4	109.7	109.1	
	May	106.7	103.2	105.9	108.2	106.6	106.1	106.9	116.8	109.4	103.2	111.5	107.7	96.7	105.9	98.7	101.5	109.8	109.9	
	June	106.7	103.1	105.9	108.2	106.6	106.1	106.9	116.0	108.8	102.9	110.9	107.7	95.9	105.9	98.0	101.4	109.8	110.9	
	July	106.3	103.1	105.9	108.2	106.6	106.1	106.9	114.2	107.4	102.9	109.5	107.7	94.3	105.9	96.8	101.8	110.1	111.1	
	August	106.3	102.6	105.9	108.2	106.6	106.0	106.8	113.1	106.7	102.9	108.7	107.7	95.0	105.9	97.4	101.8	110.1	111.3	
	September	106.5	101.8	105.9	108.2	106.6	106.1	106.8	112.9	106.1	102.9	108.3	107.7	96.9	105.9	98.8	101.9	110.1	111.4	
	October	106.7	101.6	105.3	107.3	106.2	106.9	106.3	113.3	106.6	103.2	108.8	106.5	99.2	105.9	100.7	101.9	110.5	111.5	
	November	106.6	101.1	104.8	106.3	106.0	105.2	105.4	113.7	106.8	103.8	109.1	106.5	99.8	105.9	101.2	101.9	110.4	111.8	
	December	106.3	101.0	105.0	106.4	106.0	104.4	105.3	115.5	107.2	104.3	109.9	106.5	96.6	105.9	98.7	101.9	110.3	112.1	
16	2003	January	108.0	101.1	105.5	106.4	106.0	104.4	105.4	117.2	110.6	104.6	112.5	115.2	100.8	119.6	104.2	101.9	111.5	112.2
	February	109.3	101.1	106.1	106.9	106.3	104.7	105.8	119.4	113.4	105.1	114.8	115.2	105.3	119.6	107.9	101.9	111.5	113.1	
	March	110.1	102.1	106.2	106.9	104.5	104.8	105.6	119.8	113.3	105.4	115.0	115.2	110.1	119.6	111.8	101.8	113.7	113.4	
	April	108.4	102.1	106.2	107.0	104.8	105.2	105.7	119.0	113.0	105.3	114.5	115.2	97.0	119.6	101.2	101.5	114.7	113.7	
	May	108.2	102.1	106.2	107.0	104.8	105.8	105.8	118.3	112.0	105.2	113.7	115.2	96.4	119.6	100.8	101.5	114.7	113.8	
	June	107.7	102.3	106.3	107.1	104.4	105.8	105.8	116.6	110.5	104.9	112.2	115.2	93.6	119.6	98.6	101.5	114.8	114.3	
	July	107.8	102.2	106.3	107.1	104.4	105.8	105.8	114.9	110.4	104.3	111.5	115.2	94.8	119.6	99.5	101.5	115.7	114.4	
	August	108.1	102.1	106.2	107.2	104.4	105.8	105.8	114.7	110.3	104.3	111.4	115.2	96.3	119.6	100.8	101.5	115.7	114.7	
	September	108.7	102.3	106.4	107.3	105.1	106.4	106.2	115.6	110.5	104.8	111.9	115.2	98.9	119.6	102.8	101.5	115.7	114.8	
	October	109.1	103.8	108.3	109.3	106.8	108.7	108.1	115.6	110.7	104.2	112.0	114.6	96.5	119.6	100.9	101.5	116.0	114.8	
	November	109.7	107.0	109.0	110.3	106.9	109.1	109.0	116.2	110.1	105.2	111.9	114.6	98.2	119.6	102.2	101.5	116.0	114.8	
	December	110.6	107.1	109.2	110.3	107.2	109.4	109.2	120.8	112.6	106.4	115.0	114.6	100.7	119.6	104.2	101.5	116.0	115.0	

¹ Excluding VAT

² "Other inputs" includes maintenance and repairs, services other than veterinary and miscellaneous materials

Table 3 Seasonally Adjusted¹ Agricultural Output Price Index², 1995 - 2003

Base year 2000=100

Period	Total outputs index	Finished cattle	Cows for slaughter	Store cattle	Sheep	Pigs	Poultry	Milk	Potatoes	Vegetables	
1995	January	108.2	117.8	136.7	115.8	107.7	102.1	97.6	99.6	133.2	89.0
	February	109.3	118.7	135.4	116.1	106.1	104.0	97.9	101.5	192.0	90.6
	March	109.6	118.5	135.4	114.1	98.8	108.2	97.9	102.6	191.7	91.2
	April	111.2	122.7	137.7	116.9	93.1	111.4	98.9	106.0	180.3	91.1
	May	109.7	121.8	136.8	114.0	86.4	108.0	99.4	106.6	133.4	90.5
	June	109.4	119.8	135.7	112.3	83.7	106.8	99.0	107.1	136.0	90.6
	July	107.4	115.6	129.7	112.9	83.9	107.5	98.8	106.2	120.8	93.1
	August	110.0	119.7	132.4	112.8	80.8	111.4	99.5	106.0	100.6	96.5
	September	109.8	119.7	131.4	113.6	85.2	113.7	100.4	105.1	105.7	95.7
	October	111.5	121.3	133.3	114.3	92.2	115.7	100.9	106.7	105.1	93.6
	November	111.0	119.4	133.1	114.5	93.8	119.4	100.6	106.4	104.3	93.2
	December	111.3	117.5	133.3	114.0	97.4	121.4	107.0	106.8	95.5	95.2
1996	January	110.6	112.0	127.2	110.9	98.5	125.7	101.5	107.5	97.0	95.8
	February	111.3	111.8	125.9	112.4	105.7	133.4	101.5	108.2	92.0	100.1
	March	111.6	109.6	124.3	106.8	109.4	121.5	101.3	111.1	90.2	109.1
	April	108.3	103.9	112.8	103.3	120.9	122.4	100.9	106.6	77.4	110.0
	May	106.0	102.7	108.3	100.9	111.7	122.0	100.6	105.7	64.8	102.8
	June	104.8	100.2	101.7	100.0	104.1	124.0	101.0	105.8	66.4	98.9
	July	103.3	96.3	97.8	95.5	99.6	123.7	100.5	105.6	118.7	95.4
	August	102.3	93.4	95.3	90.1	101.9	123.0	101.5	105.3	105.9	89.2
	September	102.3	94.0	98.5	93.8	110.1	127.2	101.7	104.3	67.0	91.0
	October	101.1	93.9	99.4	91.0	111.2	125.1	103.1	102.2	51.6	89.0
	November	102.0	95.5	99.6	96.4	124.3	116.9	102.8	102.1	66.7	90.3
	December	106.3	104.4	108.7	99.0	132.7	116.1	106.8	104.2	69.8	91.3
1997	January	101.3	98.4	104.0	95.3	130.0	112.4	102.0	97.0	61.1	90.1
	February	99.6	95.9	102.3	93.5	119.9	105.5	102.5	98.9	54.4	88.3
	March	99.2	95.1	100.6	95.0	116.8	105.8	102.2	98.7	51.9	84.6
	April	98.2	92.8	99.6	94.5	108.9	111.0	102.2	98.8	50.7	89.0
	May	98.8	90.8	98.7	96.2	105.7	129.7	101.8	98.6	61.6	89.4
	June	98.7	90.6	100.5	97.2	105.1	119.5	102.2	97.8	80.6	95.8
	July	99.0	95.4	104.1	97.0	112.3	109.0	102.3	97.8	71.0	97.4
	August	99.7	96.0	105.2	97.4	118.3	107.8	102.7	97.5	72.6	92.7
	September	99.5	96.5	102.9	95.2	121.1	102.7	102.6	98.4	86.9	93.8
	October	99.8	97.2	101.1	96.5	119.5	104.8	102.3	98.4	85.8	94.4
	November	99.6	98.1	102.9	94.1	110.3	104.7	103.4	99.5	85.8	94.2
	December	98.6	96.6	98.6	93.9	101.7	102.7	113.2	99.2	85.7	93.0
1998	January	98.3	94.1	95.7	92.2	96.2	102.6	101.9	101.4	91.2	95.5
	February	97.9	96.6	96.9	93.4	84.2	104.7	101.5	100.3	105.6	94.8
	March	97.5	97.6	100.6	93.6	83.7	101.6	101.4	99.2	108.3	92.6
	April	99.1	98.8	100.6	93.5	92.4	97.0	100.9	101.4	141.0	95.1
	May	100.0	99.0	101.0	91.6	100.9	92.7	101.1	101.9	155.9	96.4
	June	100.3	98.0	100.9	90.2	110.5	88.3	101.4	102.1	148.4	98.2
	July	99.4	95.5	98.1	89.9	115.2	86.2	101.0	102.1	149.1	98.7
	August	99.7	95.0	98.0	88.7	110.0	83.2	102.5	101.7	171.6	99.8
	September	96.4	91.4	94.7	86.3	95.2	79.7	94.8	101.6	144.2	98.8
	October	94.8	88.4	93.8	84.0	88.4	77.3	94.6	101.4	131.0	101.4
	November	93.4	86.5	90.4	79.6	78.1	78.3	93.0	100.6	164.9	100.3
	December	94.0	87.0	89.5	79.4	78.9	77.3	102.6	100.7	183.2	100.5
1999	January	93.1	85.3	85.6	76.6	78.3	75.3	91.4	101.0	185.8	99.6
	February	93.5	85.6	83.5	80.0	83.9	73.7	91.3	100.7	191.2	99.1
	March	94.4	88.9	88.1	82.7	87.7	73.4	92.3	99.9	197.4	99.1
	April	94.8	92.9	89.6	84.8	89.3	73.5	92.9	99.4	181.2	96.8
	May	93.9	91.1	87.8	81.4	97.2	73.8	93.0	98.8	142.8	95.8
	June	93.1	91.1	87.2	79.6	96.8	76.6	91.0	98.8	100.4	90.3
	July	93.3	91.7	86.2	81.3	91.5	83.6	92.9	98.2	110.2	94.8
	August	94.6	91.8	83.7	80.6	85.1	85.7	91.4	100.0	105.1	97.1
	September	93.5	92.6	83.9	83.8	84.1	89.2	92.3	97.6	84.4	96.9
	October	94.1	94.0	85.5	82.0	84.4	87.7	93.2	97.9	77.4	99.0
	November	94.2	94.6	88.7	86.2	85.8	87.0	93.8	97.5	72.4	98.9
	December	95.1	95.1	90.0	87.0	91.0	87.6	106.8	97.8	66.8	97.8

¹ The seasonally adjusted indices are recalculated each month

² Excluding VAT

Table 3 Seasonally Adjusted¹ Agricultural Output Price Index² , 1995 - 2003

Base year 2000=100

Period	Total outputs index	Finished cattle	Cows for slaughter	Store cattle	Sheep	Pigs	Poultry	Milk	Potatoes	Vegetables
2000 January	95.2	95.2	84.5	87.3	97.0	93.4	101.9	96.7	70.1	97.3
February	97.0	97.1	88.3	90.7	109.0	89.7	101.3	97.4	67.7	97.5
March	97.0	96.0	90.2	91.1	105.0	92.5	101.0	98.3	66.4	97.1
April	98.2	97.6	93.7	93.3	107.9	96.4	99.8	98.9	69.3	98.7
May	99.2	100.4	101.3	98.8	94.0	98.7	100.5	99.2	87.9	100.0
June	101.1	103.0	106.5	102.6	93.3	100.4	100.2	99.9	98.2	99.0
July	101.4	102.3	106.2	103.0	95.7	100.9	99.6	101.2	100.1	101.1
August	103.1	104.4	108.7	105.7	98.6	101.2	101.1	102.3	98.5	100.1
September	104.1	105.8	109.0	106.7	101.3	103.2	101.4	102.2	129.4	101.1
October	104.3	104.1	106.7	105.9	103.3	105.6	101.6	103.0	140.6	100.3
November	104.0	101.4	94.4	101.1	107.3	109.8	101.8	103.8	149.2	103.1
December	101.2	93.5	80.1	97.7	115.9	111.3	91.6	104.5	149.8	103.6
2001 January	104.6	100.0	90.7	103.9	123.8	112.5	101.0	103.7	165.0	103.6
February	103.4	94.3	88.1	93.6	129.8	116.9	101.0	102.8	155.9	104.4
March	105.2	94.8	88.3	93.8	133.1	123.5	102.3	104.3	157.9	105.4
April	103.9	95.2	87.1	94.0	131.4	112.5	103.3	103.6	151.4	105.9
May	104.8	93.1	83.9	93.0	138.4	116.8	102.8	105.7	135.6	121.6
June	104.0	91.8	81.8	100.8	138.5	115.0	105.2	106.2	127.3	111.8
July	105.2	92.6	82.5	95.9	146.2	112.5	104.9	105.8	196.8	106.4
August	102.4	88.0	82.1	94.4	143.7	112.6	105.3	105.1	137.7	98.7
September	103.7	90.7	85.8	97.6	149.9	109.5	104.4	105.1	141.0	103.0
October	103.5	90.2	86.4	99.4	156.4	108.5	106.7	103.9	139.8	101.2
November	103.8	91.3	90.5	103.4	164.5	105.6	105.7	102.9	126.2	102.0
December	102.9	92.4	92.9	104.8	173.0	106.9	95.6	100.6	118.9	104.5
2002 January	103.7	98.0	94.0	107.0	161.1	102.1	104.2	99.4	110.1	106.7
February	102.9	99.9	90.9	106.9	128.4	97.3	106.3	99.9	113.3	109.3
March	101.9	97.7	88.7	106.3	115.8	99.0	104.7	99.6	119.9	112.1
April	101.2	96.3	87.3	105.2	120.3	98.0	106.4	98.2	127.1	111.4
May	100.5	95.8	85.1	103.8	118.9	99.3	105.3	97.5	134.5	109.2
June	100.2	94.1	79.8	99.5	121.4	99.2	106.0	96.8	179.7	105.8
July	99.0	92.7	78.4	94.7	116.4	99.4	106.3	96.6	152.3	117.0
August	99.5	92.6	77.7	98.0	121.6	98.3	106.2	96.6	164.3	126.1
September	100.3	93.2	77.0	97.9	124.6	98.1	107.0	96.8	176.0	122.0
October	100.2	94.1	78.7	98.8	121.9	97.5	105.9	96.7	165.5	124.1
November	99.6	94.0	71.9	99.3	119.5	97.4	105.3	97.0	179.3	113.4
December	100.5	96.1	74.9	100.4	120.8	98.2	99.1	98.6	194.4	115.4
2003 January	100.2	93.6	80.0	100.9	118.9	99.5	106.3	98.2	192.7	113.6
February	100.0	92.8	82.6	100.7	115.6	98.2	105.2	97.5	187.9	111.8
March	99.1	91.0	85.2	98.9	106.4	95.4	106.7	97.5	190.7	109.6
April	99.7	90.6	82.8	101.0	128.4	93.9	105.3	96.5	196.1	109.8
May	98.6	90.1	82.8	99.7	132.3	91.2	107.6	96.0	164.7	106.7
June	97.0	91.2	86.7	101.9	126.8	87.3	105.5	95.8	125.3	102.2
July	97.3	92.5	87.6	104.3	123.8	87.0	104.9	95.5	141.3	104.9
August	99.3	94.8	87.7	105.8	123.6	90.7	105.9	95.5	117.9	108.6
September	99.7	93.7	84.6	104.1	118.4	95.4	107.0	95.2	143.2	115.8
October	100.2	95.8	87.3	105.6	115.8	98.6	106.7	95.3	141.3	110.8
November	100.6	97.8	90.9	105.4	110.0	100.2	107.8	95.3	132.4	113.0
December	100.5	101.1	95.3	108.8	110.3	100.0	102.5	96.0	114.7	112.2

¹ The seasonally adjusted indices are recalculated each month

² Excluding VAT

Table 4 Seasonally Adjusted¹ Agricultural Input Price Index² , 1995 - 2003

Base year 2000=100

Period	Total inputs index	Feeding stuffs					Fertilizers					
		Straight	Compound				All	Straight	Compound		All	
			Calf	Cattle	Pig	Poultry			NPK	PK		
1995	January	92.4	104.3	110.2	105.3	99.5	99.3	103.1	93.3	95.7	86.5	93.3
	February	92.6	104.6	107.3	105.4	98.1	96.4	102.7	95.5	97.0	88.1	95.1
	March	92.8	103.9	107.2	105.5	101.9	97.7	103.1	95.8	96.7	88.0	95.1
	April	93.1	104.3	107.2	105.5	101.9	98.7	103.4	95.9	97.7	87.8	95.7
	May	93.1	105.1	107.8	105.8	96.8	99.4	102.7	96.6	97.7	87.3	95.8
	June	93.2	105.2	107.5	105.1	98.4	97.6	102.4	96.9	98.1	87.4	96.0
	July	93.1	105.1	106.6	104.6	98.3	97.1	102.2	97.3	98.2	87.3	96.2
	August	93.3	105.8	106.6	104.8	98.5	99.6	102.7	98.1	98.4	87.3	96.6
	September	93.8	107.3	107.9	106.0	99.3	99.9	103.5	98.9	99.4	89.0	97.5
	October	94.3	109.2	109.6	107.4	99.8	99.9	104.6	99.2	99.7	90.4	97.9
	November	94.5	108.6	109.7	108.0	100.0	100.6	105.0	100.2	100.1	91.3	98.5
	December	95.4	109.3	112.9	109.1	102.2	100.6	106.3	102.1	101.1	92.0	99.9
1996	January	96.0	109.4	112.1	109.7	102.9	101.0	106.7	101.9	101.9	92.8	100.0
	February	96.5	109.0	112.1	110.7	102.9	102.2	107.8	102.3	102.4	92.9	100.6
	March	96.6	108.1	111.9	110.8	102.9	102.2	107.3	102.4	102.5	93.2	100.8
	April	96.6	107.9	109.8	109.1	102.9	102.4	106.4	102.7	102.9	93.6	101.2
	May	97.4	110.3	110.4	110.3	104.5	103.4	107.8	102.8	103.0	93.3	101.8
	June	97.6	111.2	111.9	111.1	105.3	103.8	108.6	102.6	103.2	93.3	101.8
	July	97.7	110.1	112.4	112.1	105.7	103.5	109.1	102.4	103.1	93.5	101.7
	August	97.9	110.6	112.7	112.4	105.7	103.6	109.1	102.6	103.1	93.7	101.7
	September	97.9	109.4	113.4	113.1	106.2	102.8	109.2	102.1	102.9	92.4	101.4
	October	97.8	109.3	112.2	110.1	107.3	102.4	108.0	101.9	102.5	91.8	101.0
	November	97.8	108.7	112.2	110.0	106.4	103.0	107.9	100.6	101.8	91.2	100.3
	December	97.3	108.0	111.4	109.2	105.1	102.9	107.2	99.9	101.1	91.1	99.7
1997	January	96.9	107.7	109.7	108.5	104.5	102.6	106.5	98.1	100.4	90.6	98.3
	February	96.4	107.7	107.9	106.2	104.0	102.2	105.5	96.5	98.4	89.2	96.8
	March	96.0	107.8	109.3	106.0	103.4	102.2	105.0	95.5	97.1	89.2	95.9
	April	95.8	107.0	109.6	105.9	102.9	102.3	104.9	95.8	97.0	89.0	95.9
	May	95.7	105.1	109.5	106.0	102.5	103.7	104.9	95.0	96.7	89.4	95.5
	June	95.7	105.1	109.3	105.6	102.4	102.2	104.4	94.3	96.3	89.5	95.0
	July	95.7	105.3	109.7	106.3	102.0	102.2	104.9	93.2	95.9	89.5	94.4
	August	95.2	103.7	108.0	105.4	101.4	101.5	103.8	92.2	95.6	89.0	93.9
	September	94.0	102.8	105.6	100.5	98.3	102.0	100.6	91.2	94.8	88.4	93.1
	October	94.1	102.4	104.7	101.3	98.3	101.1	100.9	91.5	95.7	87.3	93.6
	November	93.9	102.0	104.3	100.6	98.3	100.9	100.5	90.9	94.9	86.8	92.9
	December	93.9	101.9	103.7	100.0	98.1	101.0	100.2	89.7	94.3	86.2	92.3
1998	January	93.7	100.8	102.9	99.1	97.9	101.1	99.6	88.2	93.7	85.9	91.1
	February	93.7	100.5	103.5	99.4	97.8	100.8	99.9	88.6	93.7	85.8	91.4
	March	93.8	100.7	103.5	99.6	98.5	100.9	99.9	88.4	93.8	86.0	91.5
	April	93.4	100.2	104.0	99.7	98.1	100.3	99.7	87.7	93.2	86.2	91.0
	May	93.1	98.9	103.3	98.9	98.1	99.6	99.0	87.0	92.6	86.3	90.3
	June	92.9	98.4	101.3	98.5	96.5	99.9	98.5	87.3	92.6	86.4	90.5
	July	93.0	98.5	100.6	98.2	96.6	99.9	98.5	88.6	93.3	87.1	91.3
	August	93.0	98.8	99.7	97.7	98.0	99.7	98.3	88.5	93.4	89.0	91.6
	September	92.6	97.7	98.6	97.4	97.7	99.4	97.8	89.0	93.7	90.1	92.0
	October	92.6	96.9	97.8	97.1	97.8	99.6	97.7	88.2	93.6	93.5	91.9
	November	92.5	97.3	97.7	97.2	97.8	99.1	97.7	88.7	93.8	93.4	92.1
	December	92.3	97.2	97.1	96.5	97.7	97.6	97.1	88.1	93.7	93.0	92.0
1999	January	92.5	97.4	98.0	96.3	97.2	98.8	97.2	89.4	93.7	94.8	92.3
	February	92.8	94.9	97.8	96.2	97.8	98.7	97.1	89.6	93.7	96.0	92.7
	March	93.0	96.8	97.8	96.4	97.4	99.0	97.2	90.0	94.0	96.5	93.1
	April	93.4	96.7	97.2	96.1	98.0	99.2	97.2	89.7	94.1	96.5	93.0
	May	93.7	97.1	97.4	96.5	97.8	99.0	97.3	90.0	94.5	96.8	93.4
	June	93.7	97.4	97.6	96.3	97.7	99.1	97.3	90.2	94.7	97.0	93.6
	July	94.3	98.8	97.7	95.7	97.6	99.1	97.2	90.2	94.9	97.0	93.7
	August	94.4	97.6	97.9	95.4	97.4	98.9	96.7	90.8	95.2	96.6	94.0
	September	94.8	97.9	99.3	96.8	97.8	99.5	97.6	90.6	95.3	96.6	94.0
	October	95.1	97.4	101.2	97.2	97.8	100.0	98.0	90.4	95.1	96.0	93.8
	November	95.0	96.6	96.5	97.2	97.9	99.9	97.8	88.9	94.5	95.5	92.9
	December	96.0	96.7	96.3	98.0	97.6	99.5	98.2	89.6	94.7	96.1	93.5

¹ The seasonally adjusted indices are recalculated each month

² Excluding VAT

Table 4 Seasonally Adjusted¹ Agricultural Input Price Index² , 1995 - 2003

Base year 2000=100

Period	Total inputs index	Feeding stuffs						Fertilizers				
		Straight	Compound				All	Straight	Compound		All	
			Calf	Cattle	Pig	Poultry			NPK	PK		
2000	January	96.7	97.6	98.3	98.4	98.3	97.8	98.2	92.6	95.2	96.9	94.4
	February	97.4	97.8	98.1	98.7	98.7	99.1	98.7	93.2	95.8	97.5	95.1
	March	97.9	97.5	97.9	98.7	99.1	99.0	98.7	93.8	96.4	97.9	95.8
	April	98.1	97.6	98.2	98.7	98.8	99.0	98.7	95.3	97.2	98.2	96.7
	May	97.8	100.2	98.7	98.4	98.2	98.0	98.4	97.1	98.4	98.6	98.1
	June	99.2	100.2	99.7	98.7	99.8	99.5	99.3	99.2	99.5	99.2	99.5
	July	99.7	100.0	99.9	99.5	100.1	98.6	99.6	99.6	99.9	99.2	99.8
	August	100.3	100.5	101.3	100.0	100.4	100.5	100.2	100.8	100.4	99.8	100.5
	September	102.0	101.0	100.8	100.7	101.0	101.0	100.7	101.0	100.6	100.4	100.7
	October	102.9	103.3	102.9	101.8	101.5	101.6	101.8	104.9	102.3	102.7	103.1
	November	103.9	102.4	101.6	102.7	101.8	102.4	102.4	109.5	107.0	104.7	107.4
	December	104.2	101.9	102.6	103.7	102.4	103.3	103.3	113.9	108.0	105.0	109.8
2001	January	104.0	101.2	102.3	103.9	102.9	103.9	103.4	116.5	110.8	104.6	112.1
	February	103.8	101.5	102.6	104.2	102.8	104.1	103.6	117.5	111.8	104.4	113.1
	March	104.0	101.1	102.6	104.6	103.1	104.0	103.8	118.0	112.0	104.6	113.6
	April	104.2	100.8	103.5	104.8	103.1	103.9	103.9	119.5	112.3	104.9	114.2
	May	104.8	101.9	102.0	105.2	103.8	103.9	104.2	118.6	111.5	104.9	113.4
	June	105.3	101.8	102.9	105.1	103.8	104.1	104.3	118.1	111.2	104.8	113.1
	July	105.7	101.7	104.9	107.4	104.4	104.5	105.6	119.2	111.6	105.1	113.7
	August	105.3	102.2	103.8	107.9	104.5	104.5	105.8	119.7	112.0	105.0	114.1
	September	105.2	102.7	104.7	109.0	104.7	104.3	106.2	119.7	111.8	104.3	113.9
	October	105.2	102.9	105.1	108.0	105.3	104.2	106.0	119.8	111.9	104.1	114.0
	November	104.9	102.9	105.7	108.2	105.3	104.1	106.3	118.8	111.5	103.8	113.4
	December	104.8	103.0	105.8	108.3	105.4	104.0	106.4	117.4	110.9	103.3	112.8
2002	January	105.0	103.9	106.0	108.2	105.4	104.5	106.5	116.0	109.5	102.9	111.3
	February	105.0	104.0	105.5	107.9	105.3	104.4	106.2	114.9	108.5	103.0	110.3
	March	105.2	103.7	105.8	108.0	105.8	104.5	106.4	114.8	108.2	103.0	110.3
	April	106.1	103.6	105.3	108.2	106.5	105.3	106.8	115.4	108.2	103.3	110.4
	May	106.4	103.0	105.6	108.4	106.0	106.3	106.9	115.7	108.7	103.3	110.8
	June	106.6	102.7	105.9	108.2	106.7	105.8	106.8	116.3	109.1	103.4	111.3
	July	106.4	103.0	105.9	108.1	106.7	105.7	106.9	116.1	108.5	103.7	110.8
	August	106.5	102.6	105.9	107.9	106.8	105.7	106.6	115.8	108.3	103.5	110.6
	September	106.6	101.9	106.2	108.7	106.8	105.9	106.7	115.4	108.1	103.3	110.3
	October	106.8	102.2	105.8	107.2	106.3	106.3	106.2	115.5	108.2	103.2	110.4
	November	106.9	101.6	105.6	106.7	106.1	105.6	105.9	114.9	107.9	103.4	110.0
	December	106.3	101.6	105.5	106.5	106.1	104.6	105.6	115.0	107.3	103.5	109.9
2003	January	107.9	100.9	105.2	106.2	105.8	104.7	105.3	115.0	109.1	104.1	110.8
	February	109.2	101.0	105.4	106.6	106.0	105.1	105.6	116.2	110.9	104.8	112.2
	March	109.9	101.8	105.7	106.7	104.8	105.2	105.6	117.4	111.6	105.2	113.2
	April	108.2	101.6	105.7	107.0	104.7	105.4	105.7	117.4	111.5	105.2	113.0
	May	107.9	101.9	106.1	107.3	104.3	105.9	105.8	117.2	111.3	105.3	112.9
	June	107.6	101.9	106.4	107.1	104.5	105.5	105.8	116.9	110.9	105.3	112.6
	July	107.9	102.1	106.4	106.9	104.5	105.4	105.7	116.8	111.6	105.1	112.9
	August	108.4	102.2	106.3	106.8	104.6	105.5	105.6	117.5	112.0	104.9	113.4
	September	108.8	102.4	106.7	107.8	105.3	106.3	106.1	118.2	112.6	105.3	114.0
	October	109.2	104.3	108.7	109.2	106.8	108.0	108.0	117.9	112.4	104.2	113.7
	November	110.0	107.5	109.7	110.7	107.0	109.5	109.5	117.4	111.2	104.8	112.8
	December	110.7	107.7	109.7	110.5	107.3	109.6	109.5	120.4	112.8	105.7	115.0

¹ The seasonally adjusted indices are recalculated each month

² Excluding VAT

Appendix 1

Description of price series used (including sources) in compiling the Agricultural Output Price Index Numbers (Base: 2000=100) and changes from Base:1995=100

Item	Basic price series used ¹	Source	Changes from 1995=100
Finished Cattle (formerly prime cattle)	Weighted average price per 100 kg of: Export factory slaughterings Steers Heifers Mart Heifers 500-549kg 550-599kg 600kg +	Department of Agriculture and Food (DAF) beef price reporting scheme. Prices received by CSO from a sample of livestock marts.	No change.
Cows for Slaughter	Weighted average price per 100 kg of: Export factory slaughterings Cows Mart Cows 500-549kg 550-599kg 600kg +	DAF beef price reporting scheme. Prices received by CSO from a sample of livestock marts.	No change.

Store Cattle	<p>Weighted average price per 100 kg liveweight of:</p> <p style="padding-left: 40px;">Bullocks 200-249kg 250-299kg 300-349kg 350-399kg 400-449kg 450-499kg 500-549kg</p> <p style="padding-left: 40px;">Heifers 200-249kg 250-299kg 300-349kg 350-399kg 400-449kg 450-499kg</p>	Prices received by CSO from a sample of livestock marts.	No change.
Sheep	<p>Weighted average price per kg of:</p> <p>Export factories Lambs 13kg +</p> <p>Marts Lambs 40 – 49 kg Lambs 50 – 59 kg</p>	<p>DAF weekly Irish representative market price at designated licensed export premises.</p> <p>Prices received by CSO from a sample of livestock marts.</p>	No change.

Pigs	Weighted average price per 100 kg of Grade E and Grade U pigs.	DAF weekly inquiry at selected licensed export premises. Prices received by CSO from a sample of licensed export premises.	No change.
Poultry	Price per kg deadweight of broiler chickens Price per kg deadweight of “All the year round” turkeys.	DAF monthly inquiry at approved processing premises.	No change. Exclusion of Christmas traditional turkeys (New York dressed).
Eggs	Weighted average price per dozen of sizes S, M, L, XL.	DAF monthly inquiry at selected egg packing stations.	No change.

Milk	<p>(i) Manufacturing milk:</p> <p>Price per gallon of milk standardised at 3.7 % butterfat content and 3.3% protein content.</p> <p>(ii) Milk for human consumption:</p> <p>National average price per gallon.</p>	<p>CSO monthly price inquiry of a sample of creameries.</p> <p>Irish Co-operative Organisation Society (ICOS)</p>	No change.
Wool	<p>Weighted average price per kg for wool from the following sheep breeds:</p> <p>Cheviot, Halfbred and Suffolk cross wool.</p> <p>Blackface wool.</p>	DAF	No change.
Cereal	<p>(i) Barley for feeding:</p> <p>Price per tonne for feeding barley with a moisture content of 20 %.</p>	DAF	No change.

	<p>(i) Barley for malting:</p> <p>Price per tonne for malting barley with a moisture content of 20 %.</p> <p>(ii) Wheat:</p> <p>Price per tonne of wheat with a moisture content of 20%.</p> <p>(iii) Oats:</p> <p>Price per tonne for oats with a moisture content of 20%.</p>		
Cereal Seeds	Price per tonne of certified seed.	DAF	No change.
Sugar Beet	Price per tonne of sugar beet at 16% sugar content.	Irish Sugar Ltd.	No change.
Potatoes	<p>(i) Main crop potatoes:</p> <p>Weighted average price per tonne of the varieties “Kerrs Pink”, “Records” and “Roosters”.</p>	DAF	No change.

	(i) Early potatoes: Weighted average price per tonne of the varieties “Home Guard” and “British Queens”.		
Potato Seed	Weighted average price per tonne of the seed potato varieties “Cara”, “Kerrs Pink”, “Records” and “Rooster” produced under the conditions of the seed potato certification scheme.	DAF	No change.
Vegetables	Variable monthly basket of in-season vegetables.	Dublin Wholesale Market	No change.

¹ Excluding VAT

VAT RATES

2.5%	1 March 1993 - 29 February 1996
2.8%	1 March 1996 - 28 February 1997
3.3%	1 March 1997 - 28 February 1998
3.6%	1 March 1998 - 28 February 1999
4.0%	1 March 1999 - 29 February 2000
4.2%	1 March 2000 - 31 December 2000
4.3%	1 January 2001- 31 December 2003

Appendix 2

Description of price series used (including sources) in compiling the Agricultural Input Price Index Numbers (Base: 2000=100) and changes from Base: 1995=100

Item	Basic price series used ¹	Source	Changes from 1995=100
Straight feeding stuffs	Average price per tonne of: Rolled Barley Barley meal Maize meal Maize flaked Bran Pollard Soya bean meal Milk substitutes	CSO monthly price inquiry to merchants and co-operatives. Premier Molasses Co. Irish Sugar Ltd	No change.
	Molasses Dried molassed pulp		No change.
Compound feeding stuffs:	Average price per tonne of:	CSO monthly price inquiry to merchants and co-operatives.	Exclusion of Calf Meal.
Calf	Calf nuts/cubes		
Cattle	Dairy nuts/cubes Dairy meal Cattle fattening nuts/cubes Cattle fattening meal		

PK <i>P-Phosphorous</i> <i>K-Potassium</i>	Average price per tonne of: 0-10-20 0-7-30	CSO monthly price inquiry to merchants and co- operatives.	No change.
Seeds	Average price in March and October of: Barley seed Wheat seed Oat seed Average price in March of: Root crop seed Potato seed Grass seed Vegetable seed Sugar beet seed	CSO monthly price inquiry to merchants and co- operatives. Irish Sugar Ltd.	No change.

Plant protection products	Average price of selected fungicides, insecticides, herbicides and other plant protection products.	CSO monthly price inquiry to merchants.	Use of a more detailed basket of products.
Veterinary services including A.I.	<p>Average fees charged for treatment of various livestock illnesses and bovine tuberculosis and brucellosis testing.</p> <p>Average price of selected veterinary medicines.</p> <p>Weighted average fee for artificial insemination.</p>	<p>CSO quarterly price inquiry to a sample of veterinary surgeons.</p> <p>Wholesale price.</p> <p>DAF returns from A.I. stations.</p>	No change.

¹Excluding VAT

VAT RATES

Feeding stuffs(animal) and fertilizers are zero rated

Veterinary products oral: zero rated

Veterinary products non oral: (21% January 1995– December 2000; 20% January 2001 – February 2002; 21% March 2002 – December 2003)

Most services: (12.5% March 1995– December 2002; 13.5% January 2003 – December 2003)

Electricity: (12.5% March 1995 – December 2002; 13.5% January 2003 – December 2003)

Motor fuels: (21% January 1995– December 2000; 20% January 2001 – February 2002; 21% March 2002 – December 2003)