

10

Agriculture

- The number of agricultural holdings in 2010 was 139,800, a third of the number in 1855.
- In June 2011 there were 6.5 million cattle, 4.8 million sheep and 1.5 million pigs.
- Between 2005 and 2011 agricultural output prices rose by 27.8%, while input prices rose by 29.2%.

Contents

Introductory text	169
Table 10.1 Area under selected crops	171
Table 10.2 Number of holdings	171
Table 10.3 Number of selected livestock	172
Table 10.4 Area under crops and pasture in June	173
Table 10.5 Number of livestock in June	174
Table 10.6 Output, input and income in agriculture	175-176
Table 10.7 Agricultural output price index	177
Table 10.8 Agricultural input price index	177
Table 10.9 Livestock slaughterings	178
Table 10.10 Border, Midland and Western regional agricultural accounts	179
Table 10.11 Southern and Eastern regional agricultural accounts	180

Introduction

This chapter contains information on Irish agriculture. The statistics are mainly drawn from CSO surveys. The tables presented cover estimates of activity on farms (crop areas, livestock numbers and number of farm holdings), the price trends and values of agricultural inputs and outputs.

Long term trends

Tables 10.1 to 10.3 present a historical review of farm activity since 1847 and 1855. There has been a huge decrease in the area under crops, particularly oats and potatoes, reflecting a change from horse drawn transport and a more varied diet, especially increased consumption of meat. The number of farm holdings has declined from 419,500 in 1855 to 139,800 in 2010.

This decline is due to a number of factors: greater land ownership; increased mechanisation allowing larger farms to be operated; the migration of labour to urban areas and the change from subsistence farming to business farming. The number of horses and ponies decreased from 445,000 in 1847 to 106,000 in 2011. In contrast, the number of cattle has more than trebled, the number of pigs has almost trebled and the number of sheep has more than doubled.

Some recent trends

Cattle numbers increased during most of the 1990s, reaching a peak of 7.64 million in 1998, but have declined sharply since then.

Sheep numbers increased sharply during the late 1980s and early 1990s but have declined in recent years.

Income from farming

Table 10.6 shows the value of agricultural income (operating surplus). In 2011 cattle (28.5%) and milk (29.1%) accounted for 57.6% of goods output at producer prices.

The cost of farm inputs (intermediate consumption) rose by 21.8% over the period 2006 to 2011.

Agriculture price indices

Tables 10.7 and 10.8 show recent trends in the agricultural output and input price indices. In 2011 the base year for the agricultural output and input indices series was changed from 2000 as 100 to 2005 as 100. In 2011, both the total outputs index and total inputs index were greater than in 2005. In particular, the input price indices for energy and fertilisers have increased substantially.

Technical Notes

Number of farms

A new methodology was introduced as part of the Census of Agriculture in 1991. The new results were generally consistent for crop areas and numbers of livestock. However, the more rigorous nature of the 1991 Census resulted in fewer farms than under the old methodology.

Table 10.1 and 10.4

In 2006, the EU formally adopted a reform on the EU sugar regime. This resulted in the end of sugar production in Ireland and a sharp drop in the area under sugar beet. From 2007 onwards, areas under sugar beet and fodder beet are being combined to give an overall figure for area under beet.

The results for crops from 2008 are based on data obtained from the Department of Agriculture, Food and the Marine Single Payment Schemes and represent a new series compared to that previously published.

Tables 10.3 and 10.5

The number of sheep shown for the year 2000 differs from the total shown in the Census of Agriculture June 2000 publication. As explained in that publication, the Census figure for lambs was considerably less than a matched sample estimate. The difference was due to delayed response by some farmers to the Census. The CSO considers the matched sample estimate to be the best estimate of numbers in that category on 1 June 2000 and the data in the Yearbook incorporate that figure.

The results for cattle from 2005 are obtained from the Department of Agriculture, Food and the Marine's Animal Identification and Movement (AIM) system, formerly known as the Cattle Movement Monitoring System (CMMS). These results represent a new series and thus constitute a break in the data series published previously.

Table 10.6

The operating surplus figure is comprised of the operating surplus earned by farmers and that earned by agricultural contractors. The part earned by farmers is an approximation for the income indicator used under the old agriculture accounts methodology. It is calculated before deductions for interest payments on borrowed capital and before deductions for land annuities and for rent paid by farmers to landowners for the use of their land.

Tables 10.10 and 10.11

Totals at State level differ slightly from the corresponding totals in table 10.6. The totals in table 10.6 are more recent estimates for which regional breakdowns are not yet available.

Table 10.1 Area under selected crops

Hectares (thousands)

Year	Wheat	Oats	Barley	Potatoes	Crops, fruit and horticulture
1847	272	625	120	89	1,266
1857	192	565	81	359	1,373
1867	88	475	69	308	1,121
1877	42	403	90	262	970
1887	18	362	65	238	841
1897	13	313	68	199	745
1907	12	290	67	172	687
1917	43	420	71	210	907
1927	14	261	49	148	612
1937	89	232	53	132	644
1947	235	334	59	155	937
1957	164	186	124	108	711
1967	76	96	183	65	527
1977	48	35	298	53	508
1987	56	23	255	29	438
1997	94	21	190	18	414
2001	85	17	182	14	415
2002	103	19	176	15	423
2003	96	21	183	14	436
2004	103	20	184	13	424
2005	95	17	164	12	401
2006	88	20	167	12	381
2007	84	21	168	12	379
2008 ¹	111	23	187	11	385
2009	85	20	194	12	369
2010	78	20	175	12	354
2011	94	21	181	10	365

¹ New series from 2008 – see technical notes

Source: CSO and Department of Agriculture, Food and the Marine

Table 10.2 Number of holdings

Number

Year	Leinster	Munster	Connacht	Ulster (part)	Total
1855	117,800	115,500	115,600	70,600	419,500
1865	114,000	114,600	120,700	70,000	419,400
1875	109,600	113,000	119,700	67,700	410,000
1885	105,100	110,000	116,000	65,700	396,900
1895	104,800	111,200	116,100	65,700	397,800
1905	104,000	113,400	116,700	65,800	399,900
1915	87,900	101,800	109,000	60,900	359,700
1930	83,600	98,200	103,000	53,100	338,000
1940	81,100	95,600	99,400	50,600	326,700
1950	78,500	93,700	97,100	48,600	317,900
1960	71,800	88,200	87,300	42,900	290,300
1970	70,400	86,700	81,800	40,500	279,500
1980	66,600	83,100	76,200	37,600	263,600
1991	42,700	56,300	48,900	22,100	170,100
2000	35,600	46,200	40,900	18,900	141,500
2010	34,800	45,700	40,300	19,100	139,800

Source: CSO

Agriculture

Table 10.3 Number of selected livestock

Thousands

Year	Cattle	Sheep	Pigs	Poultry	Horses and ponies
1847	2,005	2,046	542	4,630	445
1857	2,902	3,240	1,029	7,677	466
1867	2,996	4,546	1,050	8,302	399
1877	3,238	3,739	1,221	10,852	417
1887	3,412	3,117	1,146	11,146	431
1897	3,662	3,796	1,064	13,431	471
1907	3,889	3,425	1,085	18,200	464
1917	4,132	3,327	844	17,047	470
1927	4,047	3,120	1,178	21,584	429
1937	3,955	3,000	934	19,491	429
1947	3,950	2,094	457	17,304	438
1957	4,417	3,720	900	14,502	258
1967	5,586	4,239	985	10,593	143
1977	7,124	3,534	939	9,336	80
1987	6,545	5,595	999	9,823	59
1997	7,533	8,132	1,700	13,433	72
2000	7,037	7,555	1,722	13,961	70
2001	7,050	7,330	1,743	n/a	71
2002	6,992	7,210	1,785	n/a	73
2003	7,000	6,849	1,726	13,012	70
2004	7,016	6,777	1,653	n/a	73
2005 ¹	6,992	6,392	1,688	11,817	80
2006	6,978	5,973	1,643	n/a	87
2007	6,891	5,522	1,588	11,884	89
2008	6,902	5,061	1,462	n/a	96
2009	6,891	4,778	1,385	n/a	98
2010	6,607	4,745	1,516	10,925	106
2011	6,493	4,830	1,549	n/a	106

¹ New series for cattle from 2005 – see technical notes
Source: CSO and Department of Agriculture, Food and the Marine

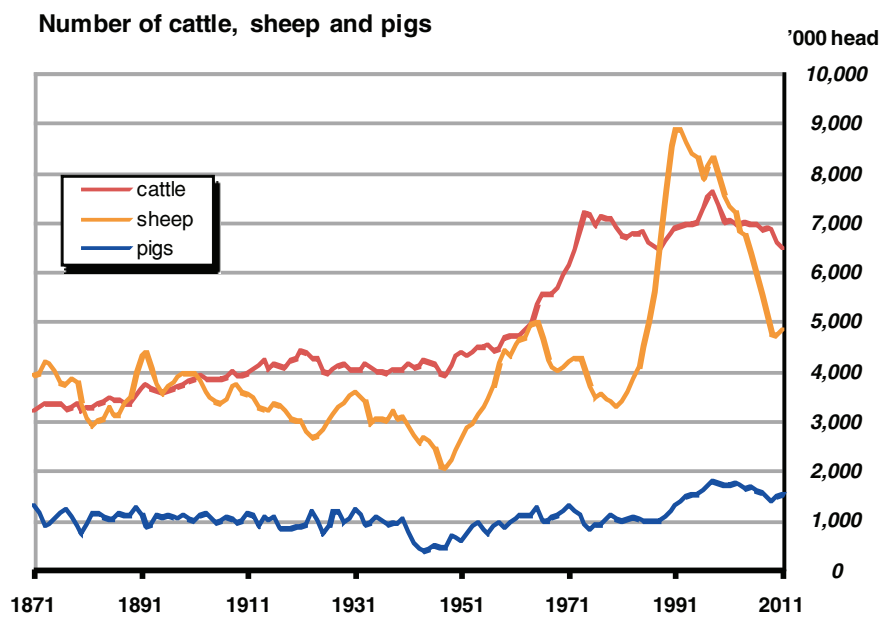


Table 10.4 Area under crops and pasture in June

Hectares (thousands)

Crop	2004	2005	2006	2007	2008 ¹	2009	2010	2011
Total wheat	102.7	95.2	87.5	84.3	110.7	84.5	77.8	94.2
Winter	71.5	65.0	59.2	64.7	87.5	64.3	59.8	77.7
Spring	31.2	30.2	28.3	19.6	23.2	20.2	18.0	16.4
Total oats	20.0	16.8	20.4	21.3	22.9	20.4	19.7	21.4
Winter	12.9	8.6	9.3	13.5	18.7	9.1	10.3	9.0
Spring	7.0	8.2	11.1	7.8	4.2	11.3	9.4	12.4
Total barley	183.7	164.4	167.0	167.5	187.2	193.6	174.8	180.6
Winter	20.5	17.0	15.1	18.7	21.1	19.3	28.8	35.9
Spring	163.2	147.4	151.9	148.8	166.0	174.3	146.0	144.8
Other cereals	3.8	5.5	4.9	5.8	1.3	1.3	1.6	1.2
Total cereals	310.2	282.0	279.8	278.9	322.0	299.8	273.9	297.4
Beans and peas	2.7	3.7	4.3	2.9	2.5	4.2	4.6	2.9
Oilseed rape	2.2	3.7	5.1	8.2	5.6	6.3	8.0	12.4
Arable silage	21.2	19.6	14.7	17.0	3.7	3.8	4.1	2.9
Maize silage	13.5	14.6	20.2	20.9	24.5	24.7	22.8	19.0
Potatoes	13.3	11.8	11.5	11.7	11.2	12.2	12.2	10.4
Turnips	1.2	1.3	1.2	1.1	1.0	1.1	1.2	1.0
Beet	35.2	35.0	9.3	7.8	9.2	10.8	9.6	8.2
<i>Sugar beet</i>	<i>31.1</i>	<i>31.0</i>	<i>1.7</i>	<i>n/a</i>	<i>n/a</i>	<i>n/a</i>	<i>n/a</i>	<i>n/a</i>
<i>Fodder beet</i>	<i>4.1</i>	<i>4.0</i>	<i>7.7</i>	<i>n/a</i>	<i>n/a</i>	<i>n/a</i>	<i>n/a</i>	<i>n/a</i>
Fodder rape and kale	1.1	1.5	2.4	2.0	0.9	1.5	1.8	1.3
Vegetables for sale	3.7	4.1	3.9	4.2	3.7	4.4	4.9	3.8
Fruit	1.2	1.6	1.5	1.6	0.4	0.4	1.2	0.8
Nursery stock, bulbs and flowers	1.3	1.3	1.4	1.2	0.3	0.2	0.3	0.4
Other crops	17.2	20.9	25.8	21.8	0.0	0.0	9.4	4.9
Total crops, fruit and horticulture	423.9	401.1	381.0	379.4	385.0	369.4	353.9	365.4
Silage	1,020.4	1,198.3	1,211.2	1,039.9	1,161.5	1,153.1	1,076.4	1,070.2
Hay	189.0	242.3	264.6	243.3	267.2	245.7	193.8	213.2
Pasture	2,218.1	1,988.7	1,932.7	2,158.5	2,314.9	2,333.7	2,507.6	2,459.3
Crops and pasture	3,851.4	3,830.5	3,789.5	3,821.1	4,128.6	4,101.9	4,131.7	4,108.2
Rough grazing in use	453.5	471.5	471.0	454.8	500.4	492.1	437.3	447.3
Area farmed	4,305.0	4,302.0	4,260.5	4,275.9	4,629.0	4,593.9	4,568.9	4,555.5

¹ New series from 2008 – see technical notes

Source: CSO and Department of Agriculture, Food and the Marine

Agriculture

Table 10.5 Number of livestock in June

Thousands

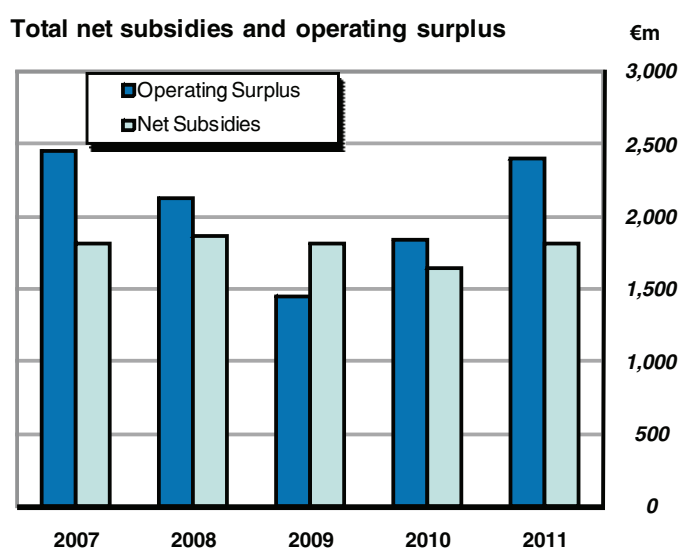
Livestock	2005	2006	2007	2008	2009	2010	2011
Cattle¹							
Bulls	62.7	70.7	61.1	57.5	55.2	52.0	41.8
Dairy cows	1,055.1	1,084.7	1,089.8	1,095.2	1,096.7	1,070.8	1,116.9
Other cows	1,128.7	1,182.4	1,207.1	1,220.1	1,203.7	1,158.4	1,123.3
Male: 2 years and over	536.8	565.1	509.7	475.8	501.2	506.2	425.5
Female: 2 years and over	373.5	400.8	396.4	390.3	409.3	426.2	411.9
Cattle Male: 1-2 years	972.1	845.2	817.9	832.2	851.4	760.3	673.4
Cattle Female: 1-2 years	900.5	876.0	867.7	871.7	884.2	871.5	854.7
Cattle Male: under 1 year	957.5	951.1	947.1	969.4	918.2	826.7	891.9
Cattle Female: under 1 year	1,004.8	1,001.7	994.0	989.9	970.8	934.6	953.6
Total cattle male	2,529.1	2,432.1	2,335.8	2,334.8	2,326.0	2,145.1	2,032.7
Total cattle female	4,462.7	4,545.7	4,555.1	4,567.2	4,564.7	4,461.5	4,460.3
Total cattle	6,991.8	6,977.8	6,890.9	6,902.1	6,890.7	6,606.6	6,493.0
Sheep							
Rams	96.3	95.7	89.6	81.8	73.9	80.0	73.7
Ewes	3,358.2	3,104.3	2,854.2	2,614.1	2,451.0	2,449.5	2,435.2
2 years and over	2,774.7	2,619.7	2,402.1	2,219.5	2,060.1	1,964.8	1,939.1
under 2 years	583.5	484.6	452.1	394.6	390.9	484.8	496.1
Other sheep	2,937.8	2,773.2	2,577.8	2,365.4	2,253.1	2,215.9	2,321.0
Total sheep	6,392.2	5,973.2	5,521.6	5,061.4	4,778.0	4,745.4	4,830.0
Pigs							
Boars	2.6	1.9	1.8	1.7	1.6	1.7	1.3
Female breeding pigs	170.8	167.5	163.6	155.7	147.4	159.7	154.9
Other pigs classified by liveweight	1,514.3	1,473.8	1,422.4	1,304.6	1,236.2	1,354.9	1,392.8
20 kg and over	1,005.2	1,037.5	972.5	916.0	865.0	961.5	972.0
under 20 kg	509.1	436.3	449.9	388.7	371.3	393.4	420.8
Total pigs	1,687.7	1,643.2	1,587.8	1,462.0	1,385.2	1,516.3	1,549.0
Horses and ponies	79.9	86.6	89.2	95.7	98.1	106.0	106.0
Mules, jennets and asses	6.0	7.0	7.2	8.8	8.8	7.5	8.7
Goats	7.3	6.7	7.3	8.9	10.1	10.5	11.4
Farmed deer	10.1	9.3	9.6	9.7	9.2	5.2	2.8

¹ New series for cattle from 2005 – see technical notes
Source: CSO and Department of Agriculture, Food and the Marine

Table 10.6 Output, input and income in agriculture

€m

Commodity	Estimated value at current prices					
	2006	2007	2008	2009	2010	2011
Livestock	2,386.0	2,381.3	2,541.6	2,224.9	2,280.9	2,664.6
(including stock changes)						
Cattle	1,494.5	1,503.4	1,686.5	1,475.6	1,502.3	1,794.8
Pigs	321.5	292.0	331.1	300.2	329.0	393.1
Sheep	193.1	184.5	173.8	159.4	165.6	189.8
Horses	263.4	269.3	228.5	172.7	150.8	143.9
Poultry	113.5	132.1	121.7	117.0	133.2	143.0
Livestock Products	1,374.9	1,710.8	1,675.8	1,148.3	1,591.2	1,887.1
Milk	1,332.5	1,667.5	1,628.1	1,106.5	1,544.8	1,834.7
Other products	42.5	43.4	47.7	41.9	46.4	52.4
Crops	1,460.8	1,632.1	1,656.6	1,377.4	1,523.2	1,751.3
(including stock changes)						
Barley	85.1	137.7	113.6	63.9	118.8	163.2
Wheat	61.8	83.5	72.2	33.9	60.8	104.9
Oats	12.8	20.6	11.2	9.2	14.3	20.8
Potatoes	104.2	103.9	79.9	86.6	122.3	73.7
Mushrooms	99.9	99.6	102.8	98.8	98.5	100.3
Other fresh vegetables	89.1	94.2	94.1	107.6	93.4	94.2
Fresh fruit	40.8	33.0	33.2	32.5	35.2	35.7
Turf	35.9	32.8	33.2	34.8	34.2	35.0
Other crops	53.7	62.7	62.8	57.3	58.4	72.3
Forage plants	877.4	964.1	1,053.6	852.6	887.2	1,051.3
Goods output at producer prices	5,221.7	5,724.3	5,874.0	4,750.6	5,395.3	6,303.0
Contract work	271.5	288.3	281.0	268.7	277.7	335.7
Subsidies on products	3.8	0.7	32.4	30.0	31.8	31.0
Taxes on products	36.8	41.1	50.7	39.3	42.3	42.0
Agricultural output at basic prices	5,460.2	5,972.3	6,136.7	5,010.0	5,662.5	6,627.6



Agriculture

Table 10.6 Output, input and income in agriculture (continued)

€m

Commodity	Estimated value at current prices					
	2006	2007	2008	2009	2010	2011
Agricultural output at basic prices	5,460.2	5,972.3	6,136.7	5,010.0	5,662.5	6,627.6
Intermediate consumption	4,014.7	4,222.7	4,695.0	4,184.9	4,302.3	4,890.4
Feedingstuffs	962.4	1,024.8	1,184.3	1,048.9	1,041.0	1,175.1
Fertilisers	379.2	360.0	517.2	420.6	450.3	493.7
Financial Intermediation Services indirectly measured	110.0	108.0	119.0	81.0	80.0	80.0
Seeds	92.6	105.6	110.5	86.6	78.0	83.5
Energy and lubricants	329.8	347.8	379.3	340.0	386.9	480.7
Maintenance and repairs	377.7	393.3	400.5	399.7	405.1	434.6
Other goods and services	361.8	370.6	386.8	416.3	419.3	455.7
Crop protection products	46.4	50.9	56.7	47.6	49.0	56.8
Veterinary expenses	220.5	225.5	224.2	237.0	240.3	259.6
Forage plants	862.8	947.9	1,035.5	838.6	874.7	1,035.2
Contract work	271.5	288.3	281.0	268.7	277.7	335.7
Gross value added at basic prices	1,445.5	1,749.6	1,441.7	825.1	1,360.1	1,737.2
Fixed capital consumption	666.9	701.8	766.3	774.1	743.4	713.3
Machinery, equipment, etc	438.9	456.0	488.1	483.6	451.9	433.6
Farm buildings	228.0	245.8	278.3	290.5	291.5	279.6
Net value added at basic prices	778.6	1,047.8	675.3	51.0	616.8	1,023.9
Other subsidies less taxes on production	1,831.1	1,847.8	1,884.1	1,822.4	1,659.4	1,824.8
Factor income	2,609.8	2,895.6	2,559.4	1,873.4	2,276.2	2,848.7
Compensation of employees	425.3	448.6	436.3	427.7	434.8	453.4
Operating surplus	2,184.5	2,447.0	2,123.2	1,445.7	1,841.4	2,395.3

Source: CSO

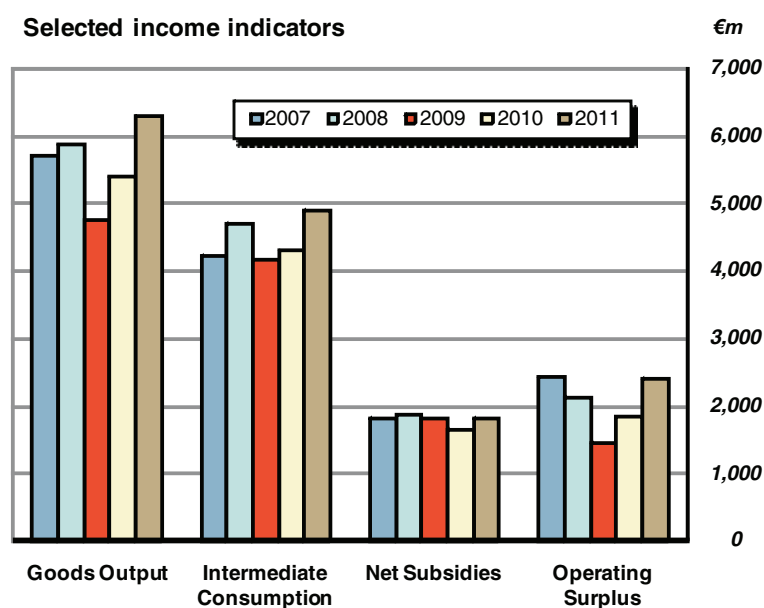


Table 10.7 Agricultural output price index

Base year 2005=100

	2005	2006	2007	2008	2009	2010	2011
Cattle	100.0	107.8	105.6	122.2	109.0	111.6	134.3
Sheep	100.0	102.4	104.6	108.7	111.4	130.0	140.6
Pigs	100.0	107.0	100.6	109.5	99.1	99.3	108.8
Poultry	100.0	99.1	103.1	114.6	114.2	114.6	132.1
Milk	100.0	96.4	119.1	120.1	83.6	107.5	122.6
Cereals	100.0	106.5	147.7	169.7	120.6	122.4	160.6
Potatoes	100.0	157.2	157.6	148.0	155.7	157.3	105.1
Vegetables	100.0	100.0	100.0	106.0	106.9	107.5	108.5
Total outputs	100.0	103.8	112.5	121.4	101.2	111.6	127.8

Source: CSO

Table 10.8 Agricultural input price index

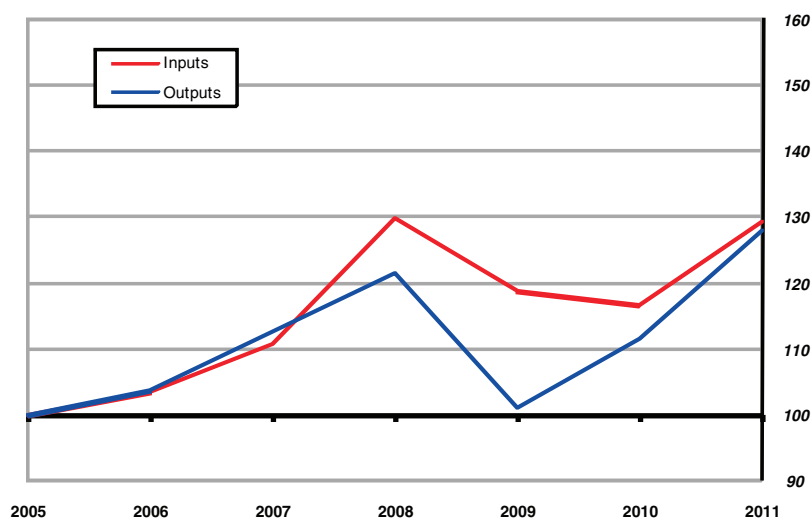
Base year 2005=100

	2005	2006	2007	2008	2009	2010	2011
Feedingstuffs	100.0	102.7	117.5	133.9	119.2	116.9	135.0
Fertilisers	100.0	107.1	110.8	182.9	150.9	132.7	162.7
Seeds	100.0	100.3	102.2	112.3	112.6	104.7	107.2
Energy (including electricity)	100.0	106.7	109.7	124.0	105.0	121.6	140.0
Plant protection products	100.0	99.1	98.4	99.7	102.8	103.1	101.0
Veterinary expenses	100.0	103.3	106.0	109.8	112.1	112.0	111.7
Maintenance of materials	100.0	102.5	106.8	112.0	113.0	110.0	107.5
Maintenance of buildings	100.0	102.9	108.7	112.6	113.5	113.1	111.9
Other goods and services including artificial insemination	100.0	100.8	101.6	104.6	107.0	107.9	108.5
Total inputs	100.0	103.4	110.7	129.7	118.6	116.6	129.2

Source: CSO

Annual agricultural price indices

Base year 2005=100



Agriculture

Table 10.9 Livestock slaughterings

'000 head

	1999	2000	2001	2002	2003	2004	2005	2006	2007	2008	2009	2010	2011
Cattle	2,133	1,886	1,893	1,782	1,863	1,815	1,685	1,774	1,771	1,665	1,600	1,717	1,642
Pigs	3,488	3,151	3,255	3,110	2,896	2,711	2,647	2,658	2,615	2,578	2,421	2,657	2,905
Sheep	4,523	4,117	3,903	3,308	3,159	3,565	3,613	3,488	3,264	2,919	2,730	2,383	2,410

Source: CSO

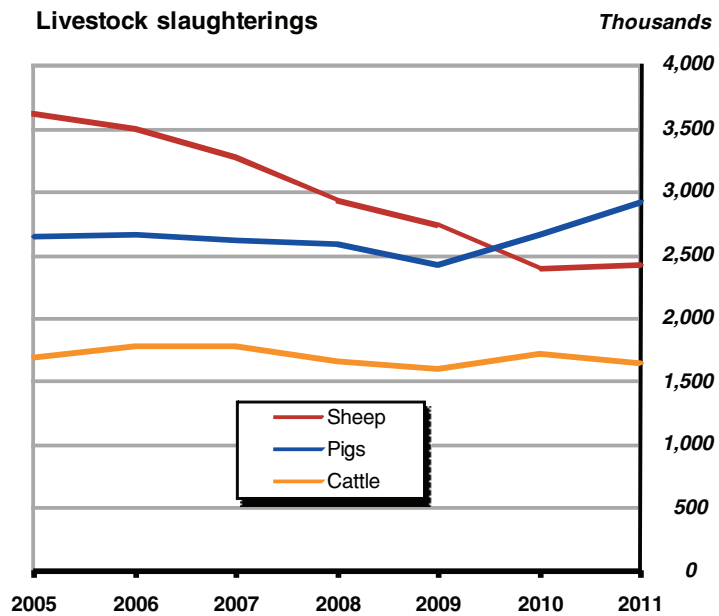


Table 10.10 Border, Midland and Western regional agricultural accounts

	€m						
	2004	2005	2006	2007	2008	2009	2010
Livestock	921.8	952.3	1,004.2	1,004.6	1,050.7	948.9	965.6
<i>of which</i>							
Cattle	523.3	556.1	595.5	596.5	658.6	571.4	578.9
Pigs	137.3	137.8	156.4	137.5	150.5	160.4	162.1
Sheep	105.0	101.8	103.3	97.9	91.9	84.4	89.4
Livestock products	365.0	328.4	325.0	403.5	368.7	249.5	327.2
<i>of which</i>							
Milk	338.2	301.7	297.0	373.2	335.5	220.4	295.9
Crops	475.7	507.4	536.2	569.1	575.0	502.4	515.1
<i>of which</i>							
Cereals	36.4	24.1	30.3	47.5	38.1	21.4	37.9
Root crops	34.3	28.7	27.4	31.4	17.1	20.8	28.7
Forage plants	267.0	319.0	346.5	359.5	386.2	325.1	316.8
Goods output at producer prices	1,762.6	1,788.0	1,865.4	1,977.1	1,994.4	1,700.8	1,807.9
Contract work	91.6	99.3	99.4	102.4	100.2	98.5	95.3
Subsidies on products less taxes on products	363.9	188.3	-5.1	-5.4	10.4	11.0	12.3
Agricultural output at basic prices	2,218.1	2,075.6	1,959.6	2,074.0	2,105.0	1,810.3	1,915.5
Intermediate consumption	1,341.9	1,419.2	1,538.8	1,613.2	1,736.0	1,603.6	1,578.6
<i>of which</i>							
Feedingstuffs	404.6	387.2	427.9	472.0	537.5	498.7	478.5
Fertilisers	114.4	119.9	128.4	122.3	164.6	142.7	150.0
Energy and lubricants	90.0	111.1	122.9	133.3	136.0	117.5	134.9
Forage plants	263.0	313.9	340.7	353.6	379.7	319.7	312.1
Contract work	91.6	99.3	99.4	102.4	100.2	98.5	95.3
Gross value added at basic prices	876.2	656.4	420.9	460.9	369.0	206.7	336.9
Fixed capital consumption	240.7	248.2	258.6	263.0	286.9	288.2	290.8
Net value added at basic prices	635.5	408.2	162.3	197.9	82.1	-81.6	46.1
Other subsidies less taxes on production	350.5	801.8	845.3	837.4	840.0	831.7	753.5
Factor income	986.0	1,210.0	1,007.6	1,035.3	922.1	750.1	799.6
Compensation of employees	131.9	128.3	136.1	143.4	126.3	123.9	121.7
Operating surplus	854.1	1,081.7	871.5	891.9	795.8	626.3	677.9

Source: CSO

Agriculture

Table 10.11 Southern and Eastern regional agricultural accounts

€m

	2004	2005	2006	2007	2008	2009	2010
Livestock	1,291.0	1,322.6	1,383.9	1,367.6	1,484.8	1,275.3	1,311.4
<i>of which</i>							
Cattle	822.9	857.1	906.2	906.2	1,023.4	900.1	919.3
Pigs	160.1	154.2	164.4	155.8	183.0	146.3	173.0
Sheep	95.5	90.1	87.2	84.3	79.5	73.1	74.8
Livestock products	1,094.3	1,047.5	1,040.6	1,298.9	1,303.6	890.1	1,256.2
<i>of which</i>							
Milk	1,079.6	1,031.6	1,026.0	1,285.7	1,289.1	877.2	1,240.8
Crops	874.9	868.6	917.8	1,026.4	1,028.6	863.9	933.4
<i>of which</i>							
Cereals	145.0	101.6	129.4	194.3	158.9	85.7	155.9
Root crops	130.5	116.8	85.6	77.8	52.4	56.1	82.4
Forage plants	423.7	468.4	515.3	563.0	625.0	526.7	507.4
Goods output at producer prices	3,260.2	3,238.7	3,342.3	3,692.9	3,817.0	3,029.3	3,501.0
Contract work	169.5	170.9	172.1	186.0	180.8	170.2	172.9
Subsidies on products less taxes on products	509.1	226.4	-12.2	-12.3	-4.2	4.1	3.5
Agricultural output at basic prices	3,938.8	3,635.9	3,502.1	3,866.5	3,993.6	3,203.6	3,677.4
Intermediate consumption	2,174.2	2,267.7	2,370.2	2,449.6	2,772.4	2,471.9	2,519.4
<i>of which</i>							
Feedingstuffs	499.3	487.5	542.5	565.0	666.1	581.3	584.0
Fertilisers	243.6	243.4	251.2	236.4	342.4	273.2	300.6
Energy and lubricants	147.6	172.4	186.8	186.8	208.5	188.3	209.5
Forage plants	417.4	461.0	506.7	553.6	614.4	518.0	499.9
Contract work	169.5	170.9	172.1	186.0	180.8	170.2	172.9
Gross value added at basic prices	1,764.7	1,368.3	1,131.9	1,416.9	1,221.3	731.6	1,158.0
Fixed capital consumption	411.2	415.9	426.8	453.4	489.1	493.8	458.1
Net value added at basic prices	1,353.5	952.3	705.2	963.5	732.2	237.8	700.0
Other subsidies less taxes on production	242.0	890.7	999.2	1,028.2	1,059.3	1,010.5	930.3
Factor income	1,595.5	1,843.0	1,704.4	1,991.7	1,791.5	1,248.3	1,630.3
Compensation of employees	272.1	280.8	289.2	305.2	309.9	303.9	298.5
Operating surplus	1,323.3	1,562.2	1,415.2	1,686.4	1,481.6	944.4	1,331.8

Source: CSO

