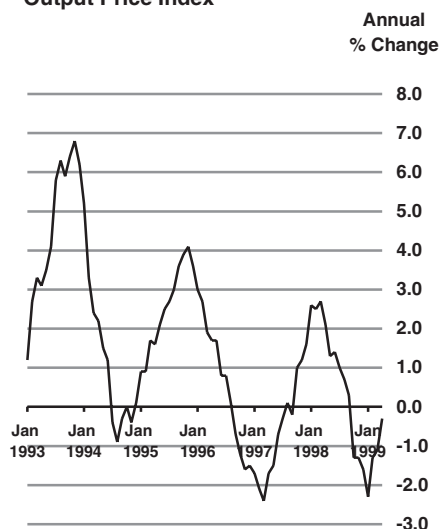


18 May 1999

Wholesale Price Index April 1999

Manufacturing Industries Output Price Index



Manufacturing Output Price Index

	Price Index	% monthly change	% annual change
Jan 1999	119.4	- 0.1%	- 2.3%
Feb 1999	120.1	+0.6%	- 1.3%
Mar 1999	120.6	+0.4%	- 1.1%
Apr 1999	121.3	+0.6%	- 0.3%

Manufacturing Output prices up again in April

Factory gate prices rose by 0.6% in April 1999 to bring the overall manufacturing Output Price Index to 121.3. This is the third consecutive month that prices rose significantly, thereby registering a 1.6% increase since January this year. In the twelve months to April 1999 the index fell by 0.3% compared to an annual decline of 1.1% in March. *See Graph across and Table 1.*

Prices increases in products sold on the home market contributed most to the overall increase this month. The index for home sales increased by 0.9% and the index for export sales increased by 0.4% in the month. *See Table 2 and Graph on page 6.*

The main contributors to the monthly change were: increases in Slaughtering, preparing and preserving of meat (+1.6%), Drink (+1.2%), Tobacco (+1.1%) and Electrical engineering (+0.7%).

Other notable monthly changes were: Bread and flour confectionery (+1.6%).

The main contributors to the annual change were: decreases in Dairy products (-2.2%), Slaughtering, preparing and preserving of meat (-2.4%), Grain milling (-3.6%) and increases in Tobacco (+2.7%) and Drink (+1.5%). Other notable annual changes were: Leather, leather goods and footwear (-11.8%), Production and preliminary processing of metals (-6.2%) and Vegetable/animal oils and fats (+6.9%).

The monthly price index for Mining, quarrying and turf rose by +1.0%. *See Table 2.*

Breaking down wholesale price changes by sector of use shows that:

- ◆ Building and construction material prices rose by +0.4% in April 1999 and increased by 0.2% in the year since April 1998. The largest price changes in the month were: Bituminous macadam and Asphalt which increased by 2.5%, Bituminous emulsions which increased by 1.2% and Ready mixed mortar and concrete which rose by 1.7%. *See Table 3.*
- ◆ Prices of capital goods showed an increase of 1.8% in April 1999 and changed by +2.8% in the year since April 1998. The largest change was in Building and construction (i.e. materials and wages) which increased by 3.4%. This rise was mainly due to a wages review in the building and construction sector. *See Table 4.*
- ◆ The price of energy products increased by 2.2% in April 1999 and by 1.4% in the year since April 1998. There were increases in all the petroleum fuels. *See Table 5.*

Published by the Central Statistics Office, Ireland.

Ardee Road
Dublin 6
Ireland

Skehard Road
Cork
Ireland

Tel: +353-1 497 7144
Fax: +353-1 497 2360

Tel: +353-21 359000
Fax: +353-21 359090

LoCall: 1890 313 414

Both offices may be contacted through any of these telephone numbers.

CSO on the Web: <http://www.cso.ie>

Director General: Donal Murphy

Enquiries:

WPI Statistics	WPI Section, ext 5454 wpi@cso.ie
Queries and Sales	Information Section, ext 5032 information@cso.ie
Diskette Service	Databank, ext 5301/5302 databank@cso.ie

© Central Statistics Office
The contents of this release may be quoted provided the source is given clearly and accurately. Reproduction for own or internal use is permitted.

Ref 103/1999

ISSN 0791-3311

For more information contact Margaret Cole or Sinead Phelan on ext 5454.

Table 1 Wholesale Price Indices (excluding VAT)

Base: Year 1985 as 100

Period	Output price index for manufacturing industries			General wholesale price index ¹ (See note below)		
	Price index	% Change on preceding period	Annual % change	Price index	% Change on preceding period	Annual % change
1990 Year	107.8	- 1.6	- 1.6	105.1	- 2.8	- 2.8
1991 Year	108.7	+ 0.8	+ 0.8	106.4	+ 1.2	+ 1.2
1992 Year	110.5	+ 1.7	+ 1.7	107.3	+ 0.8	+ 0.8
1993 Year	115.6	+ 4.6	+ 4.6	112.4	+ 4.8	+ 4.8
1994 Year	116.9	+ 1.1	+ 1.1	113.5	+ 1.0	+ 1.0
1995 Year	119.8	+ 2.5	+ 2.5	115.9	+ 2.1	+ 2.1
1996 Year	120.6	+ 0.7	+ 0.7	116.4	+ 0.5	+ 0.5
1997 Year	119.9	- 0.6	- 0.6	115.9	- 0.4	- 0.4
1998 Year	120.9	+ 0.8	+ 0.8	117.6	+ 1.5	+ 1.5
1997 Quarter 1	118.8	- 0.7	- 2.1	114.9	- 0.1	- 2.2
Quarter 2	119.6	+ 0.7	- 1.3	115.7	+ 0.7	- 1.0
Quarter 3	120.1	+ 0.4	- 0.2	116.2	+ 0.4	+ 0.1
Quarter 4	121.1	+ 0.8	+ 1.3	116.9	+ 0.6	+ 1.7
1998 Quarter 1	121.9	+ 0.7	+ 2.6	118.4	+ 1.3	+ 3.0
Quarter 2	121.6	- 0.2	+ 1.7	118.4	-	+ 2.3
Quarter 3	120.9	- 0.6	+ 0.7	117.9	- 0.4	+ 1.5
Quarter 4	119.4	- 1.2	- 1.4	115.9	- 1.7	- 0.9
1999 Quarter 1	120.0	+ 0.5	- 1.6			
1997 January	119.1	- 0.3	- 1.7	114.8	- 0.1	- 2.1
February	118.7	- 0.3	- 2.1	114.7	- 0.1	- 2.5
March	118.7	-	- 2.4	115.2	+ 0.4	- 2.1
April	119.2	+ 0.4	- 1.7	114.9	- 0.3	- 2.0
May	119.7	+ 0.4	- 1.5	116.0	+ 1.0	- 0.9
June	120.0	+ 0.3	- 0.7	116.1	+ 0.1	- 0.3
July	120.3	+ 0.3	- 0.3	116.4	+ 0.3	- 0.1
August	120.3	-	+ 0.1	116.6	+ 0.2	+ 0.4
September	119.7	- 0.5	- 0.2	115.6	- 0.9	-
October	120.8	+ 0.9	+ 1.0	116.9	+ 1.1	+ 1.6
November	121.0	+ 0.2	+ 1.2	116.8	- 0.1	+ 1.6
December	121.4	+ 0.3	+ 1.6	117.1	+ 0.3	+ 1.9
1998 January	122.2	+ 0.7	+ 2.6	118.8	+ 1.5	+ 3.5
February	121.7	- 0.4	+ 2.5	118.0	- 0.7	+ 2.9
March	121.9	+ 0.2	+ 2.7	118.5	+ 0.4	+ 2.9
April	121.7	- 0.2	+ 2.1	118.7	+ 0.2	+ 3.3
May	121.3	- 0.3	+ 1.3	118.0	- 0.6	+ 1.7
June	121.7	+ 0.3	+ 1.4	118.4	+ 0.3	+ 2.0
July	121.5	- 0.2	+ 1.0	118.5	+ 0.1	+ 1.8
August	121.2	- 0.2	+ 0.7	118.0	- 0.4	+ 1.2
September	120.0	- 1.0	+ 0.3	117.2	- 0.7	+ 1.4
October	119.2	- 0.7	- 1.3	115.5	- 1.5	- 1.2
November	119.4	+ 0.2	- 1.3	115.8	+ 0.3	- 0.9
December	119.5	+ 0.1	- 1.6	116.3	+ 0.4	- 1.9
1999 January	119.4	- 0.1	- 2.3			
February	120.1	+ 0.6	- 1.3			
March	120.6	+ 0.4	- 1.1			
April	121.3	+ 0.6	- 0.3			

¹ Derived from the price indices for output of manufacturing industry, output of agriculture and the import price (unit value) index. The 1997 GWPI figures were revised in September 1998. The 1998 GWPI figures are provisional due to the provisional nature of the Import (Unit value) Price Indices. Final 1998 GWPI Indices should be available by mid 1999.

Table 2 Industrial Producer Price Indices (excluding VAT)

Industrial sector	NACE code ¹	Index			Monthly % Change			Annual % Change		
		Feb 1999	Mar 1999	Apr 1999	Feb 1999	Mar 1999	Apr 1999	Feb 1999	Mar 1999	Apr 1999
Production and preliminary processing of metals	22	114.7	116.1	115.1	+1.2	+1.2	-0.9	-6.0	-5.3	-6.2
Non metallic mineral products	24	112.9	113.1	113.3	+1.3	+0.2	+0.2	-0.3	-0.4	-0.1
Chemicals	25-26	97.0	97.4	97.5	+0.6	+0.4	+0.1	-0.4	+0.1	+0.4
Basic industrial chemicals (incl. fertilisers)	251	68.3	69.1	69.2	+0.6	+1.2	+0.1	-2.1	-1.3	-0.9
Pharmaceuticals and other chemical products (incl. man-made fibres)	255-260	107.9	108.1	108.2	+0.7	+0.2	+0.1	+0.1	+0.4	+0.7
Metal articles	31	128.7	129.2	129.6	+0.5	+0.4	+0.3	+1.6	+1.7	+1.5
Mechanical engineering	32	124.8	125.9	126.6	+1.3	+0.9	+0.6	-0.1	+0.5	+1.2
Electrical engineering	34	110.7	112.2	113.0	+0.5	+1.4	+0.7	-4.5	-3.1	-1.3
Motor vehicles, parts and accessories	35	144.2	144.3	144.3	+0.1	+0.1	-	+1.4	+1.4	+1.3
Instrument engineering	37	95.9	96.4	96.8	+0.8	+0.5	+0.4	-0.8	-	+0.9
Food	411-423	124.4	124.5	125.3	+0.7	+0.1	+0.6	-1.5	-1.8	-1.3
of which:										
Vegetable/animal oils and fats	411	111.6	111.6	111.7	+0.2	-	+0.1	+8.2	+6.8	+6.9
Slaughtering, preparing and preserving of meat	412	107.1	107.5	109.2	+1.8	+0.4	+1.6	-3.5	-3.8	-2.4
Dairy products	413	138.2	137.9	138.2	+0.4	-0.2	+0.2	-2.1	-2.4	-2.2
Processing/preserving fruit and vegetables	414	131.4	132.3	132.7	+0.5	+0.7	+0.3	+1.5	+1.9	+1.7
Grain milling, animal and poultry foods	416,422	103.0	103.0	103.0	+0.7	-	-	-2.7	-3.6	-3.6
Bread and flour confectionery	419	139.6	139.6	141.8	+0.4	-	+1.6	+0.9	+0.9	+2.0
Sugar, cocoa, chocolate and, sugar confectionery	420,421	138.9	139.1	140.2	+0.1	+0.1	+0.8	+3.0	+2.4	+2.9
All other food	415,417 418,423	136.0	136.3	136.4	+0.1	+0.2	+0.1	+0.6	+0.9	+0.8
Drink	424-428	130.0	130.1	131.7	+0.4	+0.1	+1.2	+0.1	+0.1	+1.5
Tobacco	429	196.3	196.7	198.9	+0.4	+0.2	+1.1	+2.2	+2.4	+2.7
Textiles	43	117.0	118.0	117.2	-0.4	+0.9	-0.7	-2.9	-1.9	-2.9
Hosiery and other knitted goods	436	117.8	117.8	117.8	-0.3	-	-	-3.4	-3.6	-3.2
Leather, leather goods and footwear	44,451	86.6	87.1	87.9	-3.2	+0.6	+0.9	-13.9	-12.5	-11.8
Clothing	453,455,456	141.7	143.0	144.0	+1.4	+0.9	+0.7	+0.6	+1.6	+2.4
Timber and wooden furniture	46	147.2	148.3	148.4	+0.2	+0.7	+0.1	-0.1	+0.5	+0.6
Paper and paper products	471-472	123.5	123.1	122.9	-0.4	-0.3	-0.2	-0.3	-1.2	-1.4
Printing and publishing	473-474	162.5	162.5	162.5	+0.2	-	-	+1.2	+0.6	+0.6
Rubber processing	481-482	136.2	136.4	136.9	+2.7	+0.1	+0.4	+3.2	+3.4	+4.0
Plastics	483	139.4	140.0	140.2	+0.4	+0.4	+0.1	-	+0.2	+0.2
Other manufactured products	49	102.7	102.7	102.7	+0.1	-	-	+1.4	+1.4	+1.4
Mining, quarrying and turf	111,21,23	114.6	115.7	116.9	+3.4	+1.0	+1.0	-0.8	-	-0.7
Total transportable goods industries		120.0	120.5	121.2	+0.7	+0.4	+0.6	-1.2	-1.0	-0.3
Food, drink and tobacco		130.3	130.5	131.5	+0.6	+0.2	+0.8	-1.1	-1.1	-0.5
Manufacturing industries excluding food		117.6	118.3	118.9	+0.5	+0.6	+0.5	-1.0	-0.4	+0.3
Manufacturing industries excluding food, drink and tobacco		110.9	111.6	112.1	+0.5	+0.6	+0.4	-1.6	-1.0	-0.2
Manufacturing industries (home sales) ²		128.4	128.3	129.4	+0.1	-0.1	+0.9	-0.4	-0.5	+0.1
Manufacturing industries (export sales) ²		112.4	113.4	113.9	+1.2	+0.9	+0.4	-2.3	-1.6	-0.6
Total manufacturing industries²		120.1	120.6	121.3	+0.6	+0.4	+0.6	-1.3	-1.1	-0.3

¹General classification of economic activities within the European Communities²Excludes mining, quarrying & turf

Table 2A Contributions to changes in the Manufacturing Output Price Index (Table 2), March 1999

Industrial sector	NACE code ¹	Contributions to overall % change	
		One month	12 months
Production and preliminary processing of metals	22	-0.01	-0.06
Non metallic mineral products	24	+0.01	-0.03
Chemicals	25-26	+0.01	+0.05
<i>Basic industrial chemicals (incl. fertilisers)</i>	251	+0.01	-0.02
<i>Pharmaceuticals and other chemical products (incl. man-made fibres)</i>	255-260	+0.01	+0.07
Metal articles	31	+0.01	+0.05
Mechanical engineering	32	+0.02	+0.03
Electrical engineering	34	+0.05	-0.10
Motor vehicles, parts and accessories	35	-	+0.01
Instrument engineering	37	+0.01	+0.03
Food	411-423	+0.24	-0.53
of which:			
<i>Vegetable/animal oils and fats</i>	411	-	+0.02
<i>Slaughtering, preparing and preserving of meat</i>	412	+0.16	-0.27
<i>Dairy products</i>	413	+0.03	-0.33
<i>Processing/preserving fruit and vegetables</i>	414	-	+0.01
<i>Grain milling, animal and poultry foods</i>	416,422	-	-0.11
<i>Bread and flour confectionery</i>	419	+0.03	+0.03
<i>Sugar, cocoa, chocolate and, sugar confectionery</i>	420,421	+0.02	+0.08
<i>All other food</i>	415,417 418,423	-	+0.04
Drink	424-428	+0.09	+0.13
Tobacco	429	+0.06	+0.15
Textiles	43	-0.02	-0.10
<i>Hosiery and other knitted goods</i>	436	-	-0.02
Leather, leather goods and footwear	44,451	+0.01	-0.06
Clothing	453,455,456	+0.02	+0.05
Timber and wooden furniture	46	-	+0.01
Paper and paper products	471-472	-	-0.01
Printing and publishing	473-474	-	+0.01
Rubber processing	481-482	-	+0.03
Plastics	483	-	-
Other manufactured products	49	-	+0.01

¹General classification of economic activities within the European Communities

Table 3 Wholesale Price Indices (excluding VAT) for Building and Construction Materials

Base: Year 1985 as 100

Materials	Index			Monthly % Change			Annual % Change		
	Feb 1999	Mar 1999	Apr 1999	Feb 1999	Mar 1999	Apr 1999	Feb 1999	Mar 1999	Apr 1999
Sand and gravel	164.4	167.8	167.5	+1.1	+2.1	-0.2	+3.5	+6.5	+6.3
Cement	113.9	113.9	113.9	-	-	-	-	-	-
Ready mixed mortar and concrete	126.9	126.0	128.0	-0.1	-0.7	+1.6	+1.4	-	+0.9
Concrete blocks and bricks	134.7	135.0	135.4	+0.4	+0.2	+0.3	+1.1	+1.6	+1.8
Other concrete products	156.6	156.6	157.4	+0.7	-	+0.5	+2.4	+2.4	+2.5
Structural steel and reinforcing metal of which	96.9	96.9	96.8	-0.4	-	-0.1	-4.4	-5.2	-4.6
Structural steel	103.1	103.0	103.1	-	-0.1	+0.1	-1.5	-3.1	-2.5
Reinforcing metal	91.1	91.1	90.9	-0.8	-	-0.2	-7.4	-7.4	-6.9
Rough timber (including plain sawn)	167.4	165.5	165.5	+0.1	-1.1	-	-1.5	-2.6	-2.6
Other timber (including joinery)	157.1	157.1	157.3	-0.6	-	+0.1	-0.6	-0.6	-0.5
Bituminous macadam, asphalt and bituminous emulsions of which:	103.2	105.7	108.0	+0.8	+2.4	+2.2	+0.6	+3.0	+4.3
Bituminous macadam and asphalt	140.5	145.8	149.5	+0.1	+3.8	+2.5	-0.1	+3.0	+4.7
Bituminous emulsions	58.8	58.0	58.7	+2.6	-1.4	+1.2	+2.3	+3.2	+3.3
Electrical fittings	119.8	119.4	119.7	-1.0	-0.3	+0.3	-5.1	-5.1	-4.2
All other materials	140.3	140.3	140.5	-0.5	-	+0.1	+1.2	+1.1	+0.5
All materials	136.2	136.2	136.7	-0.1	-	+0.4	+0.1	+0.1	+0.2

Table 4 Capital Goods Price Indices (excluding VAT)

Base: Year 1985 as 100

Capital goods	Index			Monthly % Change			Annual % Change		
	Feb 1999	Mar 1999	Apr 1999	Feb 1999	Mar 1999	Apr 1999	Feb 1999	Mar 1999	Apr 1999
Transportable capital for use in									
Agriculture	146.7	146.6	146.8	+0.2	-0.1	+0.1	+1.9	+1.4	+1.4
Industry	142.1	142.2	142.4	+0.1	+0.1	+0.1	+1.5	+0.9	+0.9
of which:									
Private vehicles ¹	144.4	144.4	144.4	+0.2	-	-	+2.6	+2.5	+2.5
Commercial vehicles	145.6	145.6	145.6	+0.1	-	-	+3.8	+3.8	+3.8
Agriculture and industry	143.3	143.4	143.6	+0.1	+0.1	+0.1	+1.6	+1.1	+1.1
Other sectors	138.4	138.5	138.7	+0.2	+0.1	+0.1	+2.0	+1.6	+1.5
Total transportable capital	140.7	140.8	140.9	+0.2	+0.1	+0.1	+1.8	+1.4	+1.2
Building and construction (i.e. materials and wages)	150.3	150.3	155.4	-0.1	-	+3.4	+1.1	+1.1	+4.4
All capital goods	145.3	145.3	147.9	+0.1	-	+1.8	+1.5	+1.2	+2.8

¹Private vehicles are inclusive of VAT which is non-deductible for industry and agriculture.

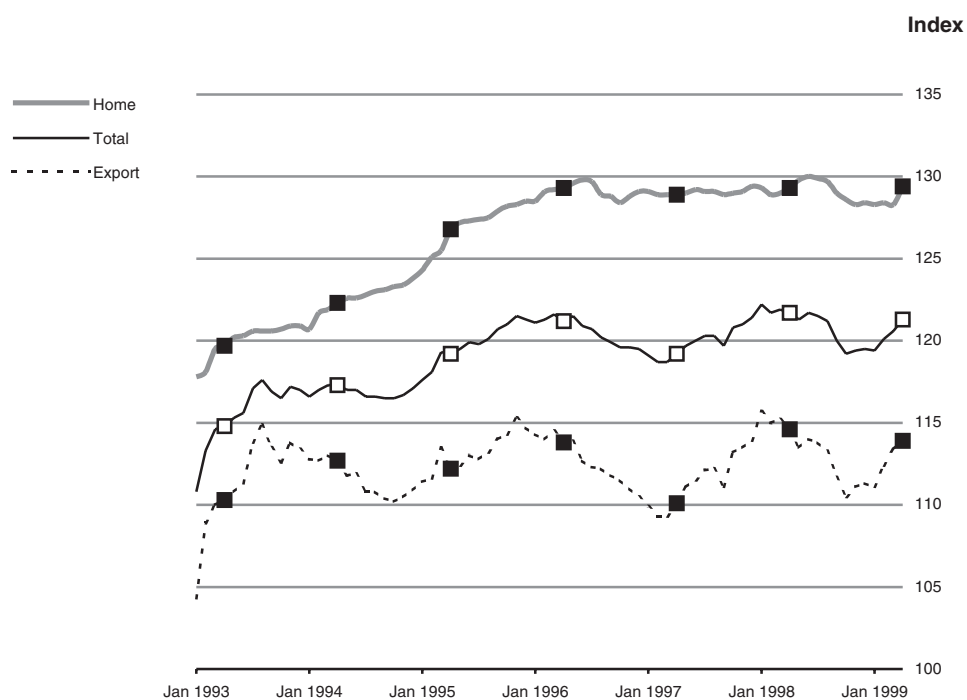
**Table 5 Wholesale Price Indices (excluding VAT) for Energy Products
(i.e. Fuels purchased by Manufacturing Industry)**

Base: Year 1985 as 100

Energy fuels	Index			Monthly % Change			Annual % Change		
	Feb 1999	Mar 1999	Apr 1999	Feb 1999	Mar 1999	Apr 1999	Feb 1999	Mar 1999	Apr 1999
Petrol	97.9	99.0	103.2	+0.9	+1.1	+4.2	-5.3	-4.3	+1.1
Autodiesel	90.9	92.8	96.1	+0.8	+2.1	+3.6	-6.2	-3.5	+1.4
Gas oil (other than autodiesel)	74.3	76.6	80.7	+1.4	+3.1	+5.4	-9.3	-5.5	+1.8
Fuel oil	78.2	78.7	81.6	+2.8	+0.6	+3.7	-2.7	-0.6	+3.2
Electricity	84.2	84.2	84.2	-	-	-	-	-	-
Petroleum fuels¹	80.2	81.1	84.4	+2.3	+1.1	+4.1	-4.4	-2.1	+2.7
Energy products	81.9	82.5	84.3	+1.2	+0.7	+2.2	-2.5	-1.1	+1.4

¹Energy products excluding electricity.

**Manufacturing Industries: Output Price Indices
for Home and Export Sales**
(Base: Year 1985 as 100)



Background Notes

Coverage The output price indices for sectors of Manufacturing Industries cover both home sales and export sales. The indices for Total transportable goods industries; Food, drink and tobacco; Manufacturing industries excluding food; Manufacturing industries excluding food, drink and tobacco; Manufacturing industries (home sales); Manufacturing industries (export sales) and Total manufacturing industries are all calculated on a net sector basis i.e. the weights used to combine the sectoral indices (including those for sectors not distinguished in Table 2) exclude sales to other sectors of Manufacturing Industry.

A new table - 2A, Contributions to changes in the Manufacturing Output Price Index (Table 2), was introduced in November 1998. This table gives the percentage contribution of each published sector to the overall Monthly and Annual percentage change on Table 2. Neither the monthly or annual percentage contributions on this table 2A will add up to the Total Manufacturing industries monthly or annual percentage change on Table 2, as not all sectors which are added into the Total Manufacturing industries figure can be published separately, due to issues of confidentiality.

The General Wholesale Price Index (Table 1) is calculated by combining special price indices for:

Output of Manufacturing Industry - excluding sales to Agriculture Sector
Output of Agriculture - excluding sales to Manufacturing Industry
Imports plus duty (Unit Value) Index - excluding imports by Agriculture Sector and
Manufacturing Industry

which eliminates duplication as far as possible. The usefulness of this general index is limited; the sectoral indices are more relevant and meaningful. As the index is dependent on the Import Price (Unit Value) Index it normally becomes available in final form a few months or so later than the other series.

The Building Materials, Capital Goods and Energy Products indices (Tables 3,4 and 5) cover home production and imports of these commodities. Table 3, the Wholesale Price Index for Building & Construction Materials provides only a general indication of price trends in that sector. The wages component of the Building and Construction Index was adjusted in accordance with the wage review which affects all workers on an hourly rate.

Prices All indices in the series are based on prices at the 15th of the month (except for the Import Price (Unit Value) Index and the Agricultural Output Price Index). Quarterly and annual indices are simple averages of the corresponding monthly indices.

Prices used in the compilation of the indices are:

Inclusive of excise duties
after deduction of direct subsidies
exclusive of VAT (except for Private Vehicles in Table 4).

Methodology The present Wholesale Price Index series compiled to base 1985 as 100 was introduced for May 1989. A methodological description of this updated series was given in the September 1989 issue of the *Statistical Bulletin*. In 1992 weights were updated and since then the 3-digit NACE weights relate to the 1985 Census of Industrial Production (CIP) while the commodity group weights are derived from the 1986 CIP. (*See December 1992 Release*).