

# 1



## ***POPULATION & HOUSEHOLDS***

- Comprehensive censuses of population have been undertaken regularly in both parts of Ireland since the “Great Census” of 1841. The most recent Republic of Ireland census took place in 2002; the most recent Northern Ireland census in 2001. Both jurisdictions compile detailed estimates of population for non-census years.
- In 1841, shortly before the Famine, the population of what is now the Republic of Ireland was approximately 6.5 million, almost four times the population of the future Northern Ireland (1.65 million). Subsequently, there was a marked population decrease in both parts of Ireland reflecting the impact of the famine and a high rate of emigration. Between 1841 and 1901, total population declined by around 50% in the future Republic of Ireland and by 25% in what is now Northern Ireland.
- The Republic’s population continued to decline for much of the twentieth century. Between 1901 and 1961, it decreased by 12% then increased by close to 36% between 1961 and 2001. However, the 2001 population estimate of 3.8 million was around 41% lower than that recorded for 1841.
- In Northern Ireland, population increased throughout the 1900s, rising by close to two-fifths between 1901 and 2001. Nonetheless, the NI population estimate for 2001 (1.7 million) was only slightly higher than the corresponding figure for 1841.
- Just over 28% of the NI population are aged 50 or more compared with almost 26% in the Republic. A quarter of the Republic’s population are in the 10-24 age range compared with 22% in Northern Ireland.
- In 1991, close to 40% of the Republic of Ireland population in the 15+ age group were single compared with 33% of the corresponding NI population.
- In 2000, there were an estimated 42,300 inward migrants to the Republic of Ireland, around 47% more than the number of outward migrants. In contrast, Northern Ireland experienced higher levels of outward than inward migration.
- In 2000, households in the Republic of Ireland were, on average, slightly larger than NI households. Eighteen per cent of households in the Republic comprised five people or more compared with 14% in Northern Ireland.
- Almost half of households in the Republic of Ireland are in dwellings which are owned outright compared with less than a third in Northern Ireland. Almost one third of NI households rent their accommodation (mainly from the public sector) compared with less than a fifth in the Republic.
- Between 1995 and 2000, the average price of a new house in the Republic of Ireland more than doubled. Over the period 1995-2000, the NI average house price increased by 39%.

# POPULATION & HOUSEHOLDS

**Table 1.1 Population by gender, 1841 - 2001**

*Thousands*

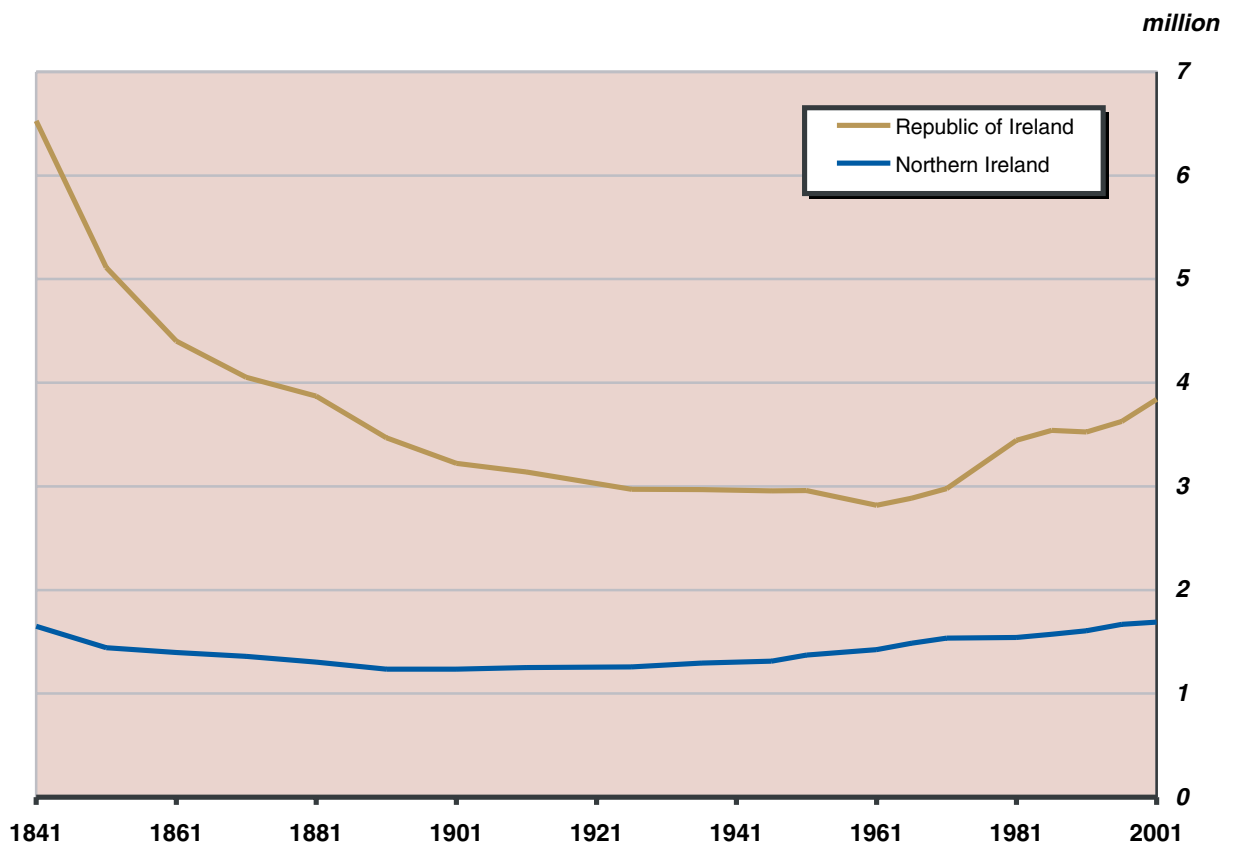
Years	Republic of Ireland			Northern Ireland		
	Males	Females	Persons	Males	Females	Persons
1841	3,222.5	3,306.3	<b>6,528.8</b>	799.8	849.2	<b>1,649.0</b>
1851	2,494.5	2,617.1	<b>5,111.6</b>	697.9	744.6	<b>1,442.5</b>
1861	2,169.0	2,233.1	<b>4,402.1</b>	667.9	728.5	<b>1,396.4</b>
1871	1,992.5	2,060.7	<b>4,053.2</b>	647.3	711.9	<b>1,359.2</b>
1881	1,912.4	1,957.6	<b>3,870.0</b>	620.8	684.0	<b>1,304.8</b>
1891	1,728.6	1,740.1	<b>3,468.7</b>	590.4	645.7	<b>1,236.1</b>
1901	1,610.1	1,611.7	<b>3,221.8</b>	589.0	647.0	<b>1,237.0</b>
1911	1,589.5	1,550.2	<b>3,139.7</b>	602.5	648.0	<b>1,250.5</b>
1926	1,506.9	1,465.1	<b>2,972.0</b>	608.1	648.5	<b>1,256.6</b>
1936	1,520.5	1,448.0	<b>2,968.4</b>	631.0	663.0	<b>1,294.0</b>
1946	1,494.9	1,460.2	<b>2,955.1</b>	638.0	675.8	<b>1,313.8</b>
1951	1,506.6	1,454.0	<b>2,960.6</b>	667.8	703.1	<b>1,370.9</b>
1961	1,416.5	1,401.8	<b>2,818.3</b>	694.2	730.8	<b>1,425.0</b>
1966	1,449.0	1,435.0	<b>2,884.0</b>	723.9	760.9	<b>1,484.8</b>
1971	1,495.8	1,482.5	<b>2,978.2</b>	754.7	781.4	<b>1,536.1</b>
1981	1,729.4	1,714.1	<b>3,443.4</b>	756.6	786.3	<b>1,543.0</b>
1986	1,769.7	1,771.0	<b>3,540.6</b>	768.4	805.1	<b>1,573.5</b>
1991	1,753.4	1,772.3	<b>3,525.7</b>	783.2	824.1	<b>1,607.3</b>
1996	1,800.2	1,825.9	<b>3,626.1</b>	810.3	851.4	<b>1,661.8</b>
2001	1,907.4	1,931.5	<b>3,838.9</b>	824.4	864.9	<b>1,689.3</b>

Sources *Republic of Ireland: Central Statistics Office*  
*Northern Ireland: Northern Ireland Statistics and Research Agency*

Note Figures for Northern Ireland for 1936, 1946 and 1981 onwards are estimates.  
 Figures for Republic of Ireland for 2001 are estimates.

# 1 POPULATION & HOUSEHOLDS

Figure 1.1 Population, 1841 - 2001



# POPULATION & HOUSEHOLDS

**Table 1.2 Estimated population by age and gender, 2001**

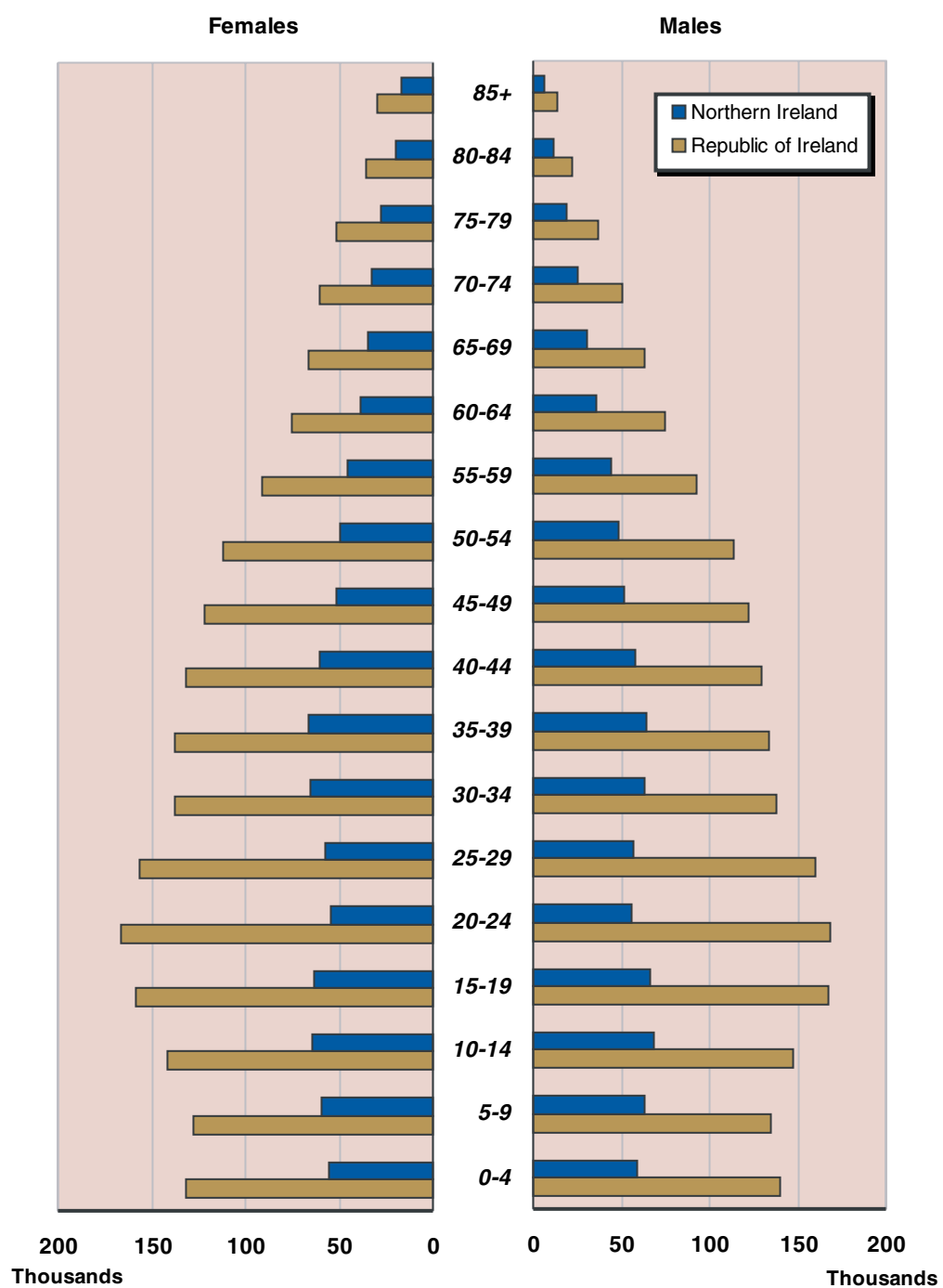
*Thousands*

Age	Republic of Ireland			Northern Ireland		
	Male	Female	Persons	Male	Female	Persons
0-4	139.5	131.3	270.8	59.1	55.7	114.7
5-9	134.5	127.4	261.9	63.0	59.8	122.9
10-14	147.6	141.3	289.0	67.9	64.6	132.4
15-19	167.3	158.6	325.9	66.0	63.8	129.9
20-24	168.5	166.4	334.8	55.6	54.8	110.4
25-29	160.1	156.8	316.8	57.0	57.9	114.9
30-34	138.1	137.3	275.4	63.0	65.0	128.0
35-39	133.7	138.0	271.6	63.9	66.3	130.2
40-44	129.2	131.5	260.7	57.6	60.2	117.8
45-49	121.7	121.4	243.1	51.8	51.1	102.9
50-54	113.8	112.3	226.1	48.4	49.8	98.2
55-59	93.1	91.3	184.3	43.9	45.5	89.4
60-64	74.6	75.0	149.6	35.5	38.2	73.7
65-69	63.0	66.2	129.2	30.5	35.0	65.5
70-74	50.7	60.1	110.8	25.1	32.8	57.9
75-79	37.0	51.8	88.7	18.7	28.0	46.7
80-84	21.6	35.5	57.1	11.2	19.4	30.5
85+	13.6	29.5	43.2	6.4	17.1	23.4
<b>Total</b>	<b>1,907.4</b>	<b>1,931.5</b>	<b>3,838.9</b>	<b>824.4</b>	<b>864.9</b>	<b>1,689.3</b>

Sources *Republic of Ireland: Central Statistics Office*  
*Northern Ireland: Northern Ireland Statistics and Research Agency*

# 1 POPULATION & HOUSEHOLDS

Figure 1.2 Estimated population by age and gender, 2001



# POPULATION & HOUSEHOLDS

**Table 1.3 Population by age**

Percentages

Age	Census Years						
	1901	1926	1951	1961	1971	1981	1991
<b>Republic of Ireland</b>							
0-4	9.7	9.7	10.6	10.7	10.6	10.3	7.8
5-9	10.1	9.6	9.5	10.2	10.6	10.1	9.0
10-14	10.4	9.9	8.8	10.2	10.0	9.9	9.9
15-19	10.8	9.6	8.1	8.3	9.0	9.5	9.5
20-24	10.1	8.1	6.8	5.6	7.2	8.0	7.6
25-34	14.5	13.4	13.2	10.6	10.9	13.9	14.1
35-44	10.6	11.6	12.9	12.0	10.1	10.4	13.1
45-54	9.3	11.2	10.9	11.8	10.7	8.8	9.8
55-64	8.1	7.8	8.5	9.5	9.7	8.4	7.9
65-74	4.3	6.2	7.0	7.0	7.1	6.9	6.8
75+	2.2	3.0	3.7	4.2	4.0	3.8	4.6
0-14	30.2	29.2	28.9	31.1	31.3	30.3	26.7
15-64	63.3	61.7	60.4	57.7	57.7	59.0	61.9
65+	6.5	9.1	10.7	11.2	11.1	10.7	11.4
<b>Total</b>	<b>100.0</b>	<b>100.0</b>	<b>100.0</b>	<b>100.0</b>	<b>100.0</b>	<b>100.0</b>	<b>100.0</b>
<b>Northern Ireland</b>							
0-4	10.3	10.2	10.1	10.3	10.2	8.0	8.1
5-9	10.1	9.3	9.4	9.3	10.2	8.4	8.2
10-14	10.0	9.5	8.1	9.3	9.4	9.5	8.1
15-19	10.0	9.5	7.9	8.4	8.2	9.6	8.1
20-24	9.7	8.7	7.4	6.6	7.5	8.1	8.0
25-34	15.1	14.4	13.9	12.1	12.3	13.1	14.9
35-44	11.2	11.7	13.4	12.4	10.9	11.5	12.5
45-54	9.4	10.8	11.5	11.9	10.8	10.1	10.5
55-64	7.7	7.8	8.5	9.7	9.8	9.6	8.9
65-74	4.3	5.6	6.4	6.5	7.0	7.6	7.4
75+	2.1	2.5	3.4	3.6	3.8	4.4	5.2
0-14	30.7	29.0	27.6	28.9	29.8	25.9	24.4
15-64	63.2	62.9	62.6	61.1	59.5	62.0	63.0
65+	6.1	8.1	9.8	10.1	10.8	12.0	12.6
<b>Total</b>	<b>100.0</b>	<b>100.0</b>	<b>100.0</b>	<b>100.0</b>	<b>100.0</b>	<b>100.0</b>	<b>100.0</b>

Sources Republic of Ireland: Central Statistics Office  
Northern Ireland: Northern Ireland Statistics and Research Agency

# 1 POPULATION & HOUSEHOLDS

**Table 1.4 Population<sup>1</sup> by gender, age and marital status**

*Thousands*

Age	Marital Status	Males				Females			
		1961	1971	1981	1991 <sup>2</sup>	1961	1971	1981	1991 <sup>2</sup>
<b>Republic of Ireland</b>									
0-14	Single	448.7	475.8	535.4	482.8	428.5	455.4	508.3	457.7
15-24	Single	194.5	229.1	281.4	299.4	172.9	200.7	247.9	275.1
	Married	6.2	17.6	25.7	8.5	18.1	35.5	47.5	18.6
	Widowed	-	-	-	-	-	0.1	0.1	0.1
	Divorced	.	.	.	-	.	.	.	-
25-44	Single	145.9	111.9	118.7	147.7	94.7	67.2	71.6	106.3
	Married	166.7	203.7	307.6	326.2	221.6	238.5	335.0	371.0
	Widowed	1.4	0.9	1.0	1.1	4.9	4.0	3.9	3.7
	Divorced	.	.	.	1.4	.	.	.	1.6
45-64	Single	88.1	84.6	73.7	59.6	70.7	61.4	48.4	37.2
	Married	203.5	211.2	211.7	243.7	182.2	198.8	206.2	237.0
	Widowed	12.0	10.3	9.0	7.9	42.2	41.7	41.5	33.8
	Divorced	.	.	.	1.4	.	.	.	1.2
65+	Single	39.9	40.3	43.0	42.3	40.3	44.9	47.2	45.5
	Married	77.1	82.5	94.8	102.2	46.2	50.3	59.6	71.3
	Widowed	32.2	27.9	27.3	28.9	79.2	84.0	96.9	112.2
	Divorced	.	.	.	0.3	.	.	.	0.2
<b>Total</b>	<b>Single</b>	<b>917.2</b>	<b>941.7</b>	<b>1,052.2</b>	<b>1,031.8</b>	<b>807.1</b>	<b>829.6</b>	<b>923.5</b>	<b>921.7</b>
	<b>Married</b>	<b>453.6</b>	<b>514.9</b>	<b>639.8</b>	<b>680.6</b>	<b>468.2</b>	<b>523.1</b>	<b>648.3</b>	<b>697.8</b>
	<b>Widowed</b>	<b>45.8</b>	<b>39.1</b>	<b>37.3</b>	<b>37.9</b>	<b>126.4</b>	<b>129.8</b>	<b>142.3</b>	<b>149.8</b>
	<b>Divorced</b>	<b>.</b>	<b>.</b>	<b>.</b>	<b>3.1</b>	<b>.</b>	<b>.</b>	<b>.</b>	<b>3.0</b>



# POPULATION & HOUSEHOLDS

**Table 1.4 Population<sup>1</sup> by gender, age and marital status - continued**

*Thousands*

Age	Marital Status	Males				Females			
		1961	1971	1981	1991	1961	1971	1981	1991
<b>Northern Ireland</b>									
0-14	Single	211.6	235.2	197.2	197.3	200.6	221.8	187.1	188.0
15-24	Single	96.9	106.6	118.2	121.0	86.7	87.9	99.2	106.8
	Married	10.2	17.9	16.2	8.5	20.1	28.9	27.6	16.8
	Widowed	-	-	-	-	-	-	-	0.1
	Divorced	-	-	0.1	0.1	-	-	0.3	0.3
25-44	Single	49.3	38.5	37.3	56.8	39.4	27.5	23.4	38.6
	Married	118.5	136.9	140.7	147.5	136.5	148.3	149.6	162.8
	Widowed	0.6	0.5	0.6	0.5	2.6	2.1	2.4	2.1
	Divorced	0.2	0.5	2.1	5.9	0.6	0.8	0.3	10.1
45-64	Single	26.5	25.4	20.3	18.2	34.5	28.4	20.4	14.9
	Married	113.1	120.3	110.0	117.7	104.7	113.9	107.6	117.3
	Widowed	5.6	5.0	4.5	4.2	22.2	22.0	20.5	17.7
	Divorced	0.3	0.4	1.4	4.6	0.5	0.9	2.1	5.8
65+	Single	11.6	11.9	11.7	12.1	20.0	23.0	22.2	20.0
	Married	36.1	42.4	44.4	51.3	23.7	29.0	33.3	39.2
	Widowed	13.5	13.0	12.2	13.6	38.9	46.1	50.0	58.5
	Divorced	-	0.1	0.3	0.8	0.1	0.2	0.5	1.1
<b>Total</b>	<b>Single</b>	<b>395.9</b>	<b>417.5</b>	<b>384.7</b>	<b>405.4</b>	<b>381.3</b>	<b>388.5</b>	<b>352.3</b>	<b>368.3</b>
	<b>Married</b>	<b>277.9</b>	<b>317.5</b>	<b>319.3</b>	<b>325.0</b>	<b>285.0</b>	<b>320.0</b>	<b>325.3</b>	<b>336.1</b>
	<b>Widowed</b>	<b>19.7</b>	<b>19.0</b>	<b>17.3</b>	<b>18.3</b>	<b>64.0</b>	<b>70.0</b>	<b>73.0</b>	<b>78.4</b>
	<b>Divorced</b>	<b>0.5</b>	<b>1.1</b>	<b>3.9</b>	<b>11.3</b>	<b>1.2</b>	<b>2.0</b>	<b>3.2</b>	<b>17.3</b>

Sources Republic of Ireland: Central Statistics Office  
Northern Ireland: Northern Ireland Statistics and Research Agency

<sup>1</sup>All census data.

<sup>2</sup>In the Republic of Ireland the category "married" includes "married but separated" in 1991, while the category "divorced" relates to "divorced in another country".

# 1 POPULATION & HOUSEHOLDS

**Table 1.5 Migration<sup>1</sup>**

	<i>Number</i>		
<b>Years</b>	<b>Inward</b>	<b>Outward</b>	<b>Net Migration</b>
<b>Republic of Ireland</b>			
1991	33,300	35,300	-2,000
1992	40,700	33,400	7,400
1993	34,700	35,100	-400
1994	30,100	34,800	-4,700
1995	31,200	33,100	-1,900
1996	39,200	31,200	8,000
1997	44,000	29,000	15,000
1998	44,000	21,200	22,800
1999	47,500	29,000	18,500
2000	42,300	22,300	20,000
<b>Northern Ireland</b>			
1991	17,600	16,200	1,400
1992	..	..	2,823
1993	..	..	2,668
1994	..	..	-469
1995	..	..	-1,886
1996	..	..	4,684
1997	..	..	-1,032
1998	..	..	-1,785
1999	..	..	-4,815
2000	..	..	-2,227

*Sources* Republic of Ireland: Central Statistics Office  
Northern Ireland: Northern Ireland Statistics and Research Agency

<sup>1</sup>Figures have been rounded to the nearest hundred.

# POPULATION & HOUSEHOLDS

**Table 1.6 Household size**

	<i>Percentages and number</i>				
Number of Persons	1996	1997	1998	1999	2000
<b>Republic of Ireland<sup>1</sup></b>					
1	22	23	22	22	23
2	24	24	24	24	24
3	16	16	17	17	17
4	17	17	18	18	18
5	12	11	11	11	11
6 or more	10	9	9	8	7
<b>Total</b>	<b>100</b>	<b>100</b>	<b>100</b>	<b>100</b>	<b>100</b>
Average household size (persons)	3.01	2.97	3.02	3.00	2.97
Sample Base (households)	46,877	47,665	39,000	39,000	39,000
<b>Northern Ireland<sup>2</sup></b>					
1	25	26	25	26	25
2	27	27	30	30	28
3	16	16	16	15	16
4	17	16	16	16	16
5	9	8	8	8	9
6 or more	5	6	5	5	5
<b>Total</b>	<b>100</b>	<b>100</b>	<b>100</b>	<b>100</b>	<b>100</b>
Average household size (persons)	2.75	2.74	2.71	2.67	2.72
Sample Base (households)	2,892	3,024	2,809	3,039	2,800

Sources Republic of Ireland: Central Statistics Office  
Northern Ireland: Northern Ireland Statistics and Research Agency

<sup>1</sup>Republic of Ireland figures are for calendar years.

<sup>2</sup>Northern Ireland for financial years.

# 1 POPULATION & HOUSEHOLDS

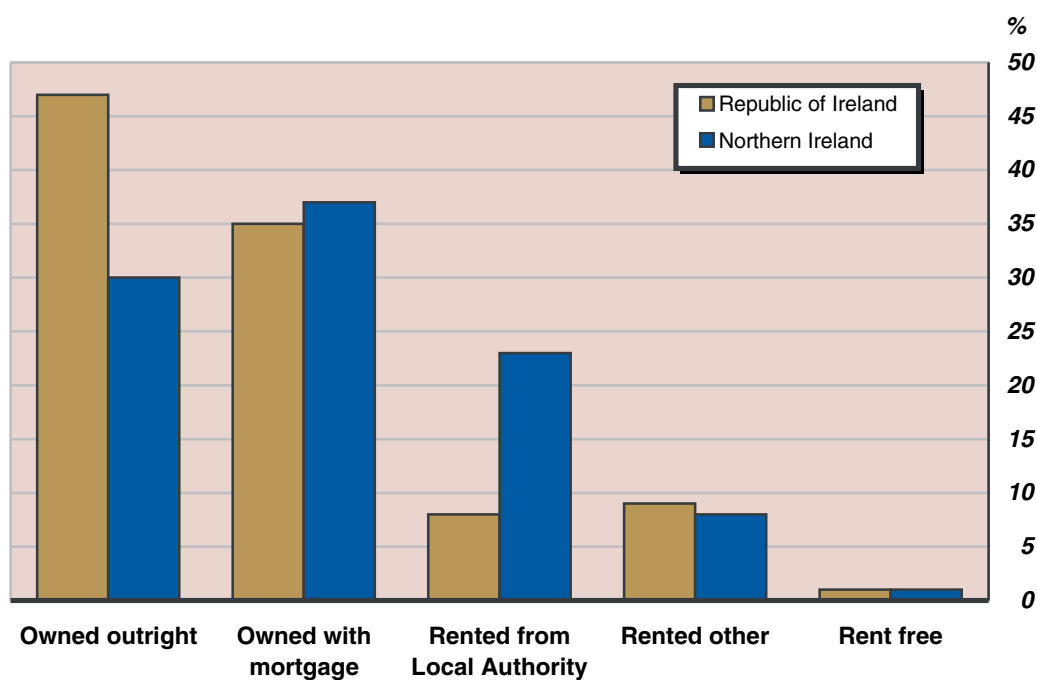
**Table 1.7 Household tenure, 1999-00**

*Percentages and number*

Republic of Ireland		Northern Ireland	
Owned outright	47	Owned outright	30
Owned with mortgage	35	Owned with mortgage	37
Rented from Local Authority	8	Rented from Local Authority	23
Rented other	9	Rented other	8
Rent free	1	Rent free	1
<b>Total</b>	<b>100</b>	<b>Total</b>	<b>100</b>
Sample base (households)	7,644	Sample base (households)	3,039

Sources Republic of Ireland: Central Statistics Office  
Northern Ireland: Northern Ireland Statistics and Research Agency

**Figure 1.3 Household tenure, 1999-00**



# POPULATION & HOUSEHOLDS

**Table 1.8 Dwellings completed and average new house prices**

Description	<i>Number</i>					
	1995	1996	1997	1998	1999	2000
<b>Republic of Ireland<sup>1</sup></b>						
<b>Dwellings completed</b>						
Private	26,604	30,132	35,454	39,093	43,024	46,657
Other	3,971	3,593	3,388	3,256	3,488	3,155
<b>Total</b>	<b>30,575</b>	<b>33,725</b>	<b>38,842</b>	<b>42,349</b>	<b>46,512</b>	<b>49,812</b>
Average new house prices €	77,994	87,202	102,222	125,302	148,521	169,191
<b>Northern Ireland<sup>2</sup></b>						
<b>Dwellings completed</b>						
Private	6,782	7,273	8,371	8,120 <sup>3</sup>	9,067 <sup>3</sup>	10,512
Other	2,403	1,607	1,810	1,498	1,282	1,158
<b>Total</b>	<b>9,185</b>	<b>8,880</b>	<b>10,181</b>	<b>9,618<sup>3</sup></b>	<b>10,349<sup>3</sup></b>	<b>11,670</b>
Average new house prices (Stg£)	62,000	65,000	68,000	71,000	74,000 <sup>3</sup>	85,000

Sources Republic of Ireland: Department of Environment and Local Government  
Northern Ireland: Department for Social Development

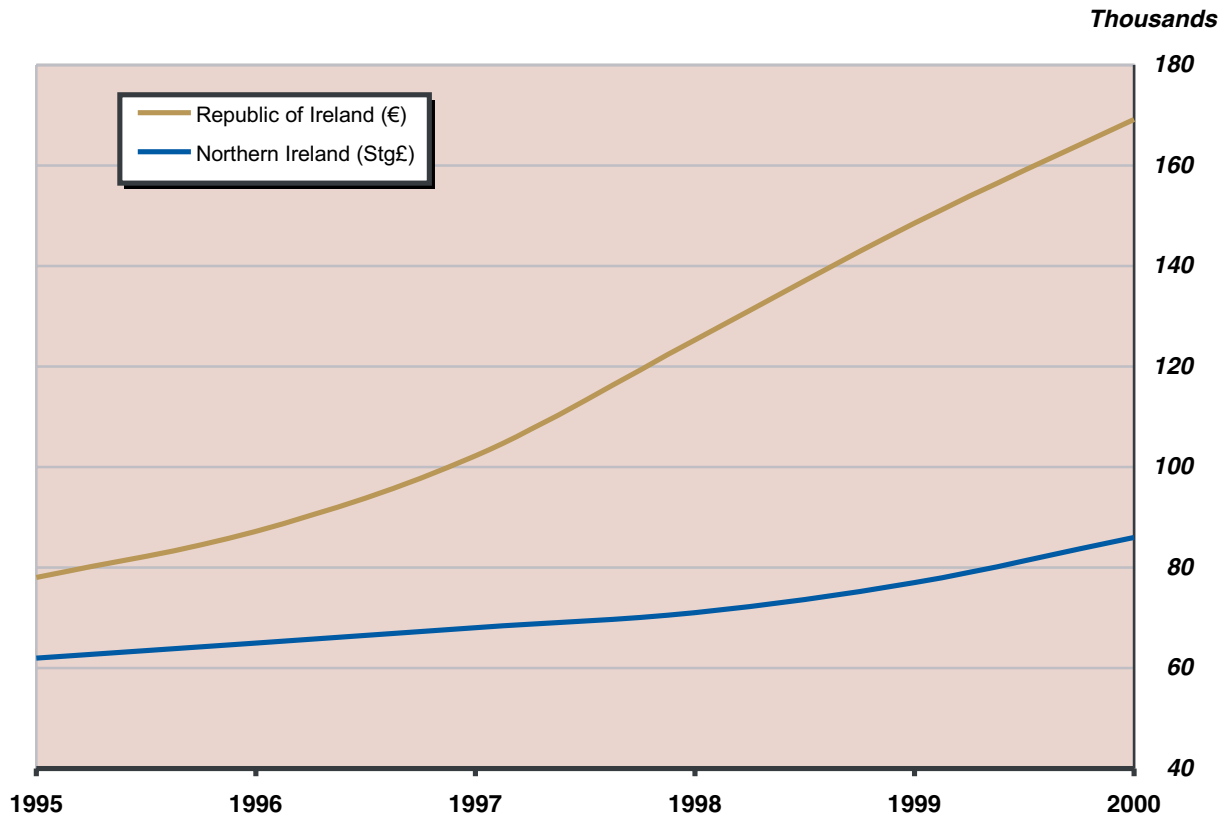
<sup>1</sup>Republic of Ireland data are for calendar years.

<sup>2</sup>Northern Ireland data are for financial years.

<sup>3</sup>These figures have been revised.

# 1 POPULATION & HOUSEHOLDS

Figure 1.4 Average new house prices



## Technical Notes

### I.

The Northern Ireland Census counts both the number of people present in Northern Ireland on census night and the number of people usually resident in Northern Ireland. The latter count is normally used to indicate population.

### II.

Population estimates for Northern Ireland and the Republic of Ireland are subject to amendment once the results of the 2001 Censuses are available.

### III.

Mid-year estimates (MYEs) of the normally resident Northern Ireland population are taken at 30 June each year. The most recent Census data, adjusted to take account of factors such as under-enumeration, provide the basis for the MYEs which are updated annually to take account of births, deaths and migration. (*Tables 1.1, 1.2*)

### IV.

Republic of Ireland gross migration flows are estimated using a number of sources, principally the Quarterly National Household Survey (QNHS - formerly the annual Labour Force Survey). This is supplemented by other data sources including the continuous Country of Residence Inquiry of passengers conducted at airports and seaports; the net passenger balance; the Register of Electors; the Child Benefit Scheme; the number of visas granted; and the number of asylum applications.

In Northern Ireland, estimates of total net migration are made each year as part of the Northern Ireland

mid-year population estimation process. These estimates are based on transfers of medical cards recorded by the National Health Service Central Registers, the General Register Office for Scotland and the Northern Ireland Central Services Agency. (*Table 1.5*)

### V.

Northern Ireland data for household size and tenure are taken from the Continuous Household Survey (CHS). The CHS, which began in 1983, is based on a simple random sample of the general population resident in private households in Northern Ireland. (*Tables 1.6, 1.7*)

Republic of Ireland data are from the Labour Force Survey (*Table 1.6*) and Household Budget Survey (*Table 1.7*).

### VI.

Republic of Ireland house price figures are average prices for the year and are derived from the data supplied by mortgage lending agencies on loans approved by them.

Northern Ireland data for new house sales and prices are derived from transactions for new dwellings notified by solicitors to the National House Building Council (NHBC). While NHBC-registered builders account for a very high proportion of newly built dwellings, their coverage is less comprehensive in rural areas.

Private sector completion figures for Northern Ireland have been adjusted by statistical methods to correct as far as possible, the proven under-recording of private sector completions. (*Table 1.8*)

