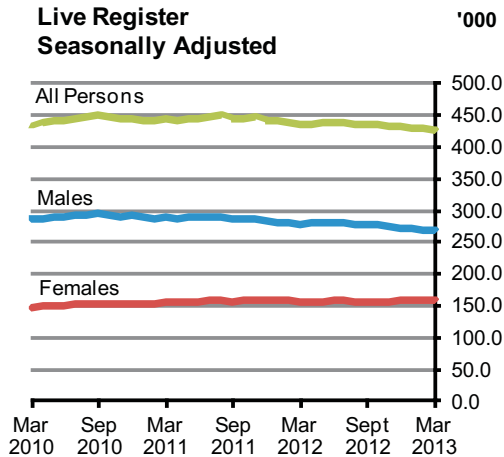




## Live Register March 2013



	Live Register Total	Seasonally Adjusted	Standardised Unemployment Rate (SUR)%
<b>March 2012</b>	434,054	436,500	14.9
<b>February 2013</b>	428,876	428,300	14.0
<b>March 2013</b>	425,088	426,100	14.0
			<b>Percentage Points</b>
<b>Change in month</b>	-	- 2,200	0.0
<b>Change in year</b>	- 8,966	-	- 0.9

### Seasonally adjusted Live Register decreases by 2,200 in March

On a seasonally adjusted basis the Live Register total recorded a monthly decrease of 2,200 in March 2013, bringing the seasonally adjusted total to 426,100. *See table 2a.*

In unadjusted terms there were 425,088 people signing on the Live Register in March 2013. This represents an annual decrease of 8,966 (-2.1%). *See table 1a.*

The standardised unemployment rate (SUR) in March 2013 was 14.0%, unchanged from the revised February 2013 rate. The seasonally adjusted unemployment rate from the most recent Quarterly National Household Survey (QNHS) was 14.2% in the fourth quarter of 2012. *See table 3.*

Other features include:

- ◆ On a seasonally adjusted basis the Live Register showed a monthly decrease of 2,500 males in March 2013, while females increased by 300 over the same period. *See table 2a.*
- ◆ The number of male claimants decreased by 11,247 (-4.0%) to 268,996 over the year and female claimants increased by 2,281(+1.5%) to 156,092. This compares with a decrease of 9,982 (-3.4%) to 280,243 for males and an increase of 2,843 (+1.9%) to 153,811 for females in the year to March 2012. *See table 1a.*

**The Live Register is not designed to measure unemployment.** It includes part-time workers (those who work up to three days a week), seasonal and casual workers entitled to Jobseeker's Benefit or Allowance. Unemployment is measured by the Quarterly National Household Survey and the latest estimated number of persons unemployed as of the fourth quarter of 2012 was 294,600.

*For more information contact Sabrina Bowen at 021 453 5151, Karen Desmond at 021 453 5534 or Brendan Curtin at 021 453 5577.*

Published by the Central Statistics Office, Ireland.

Ardee Road Dublin 6 Ireland  
Skehard Road Cork Ireland

LoCall: 1890 313 414 (ROI)  
0870 876 0256 (UK/Nl)

Tel: +353 1 498 4000 Fax: +353 1 498 4229  
Tel: +353 21 453 5000 Fax: +353 21 453 5492

Both offices may be contacted through any of these telephone numbers.

CSO on the Web: [www.cso.ie](http://www.cso.ie)  
and go to

Labour Market and Earnings: Labour Market

Director General: Pádraig Dalton

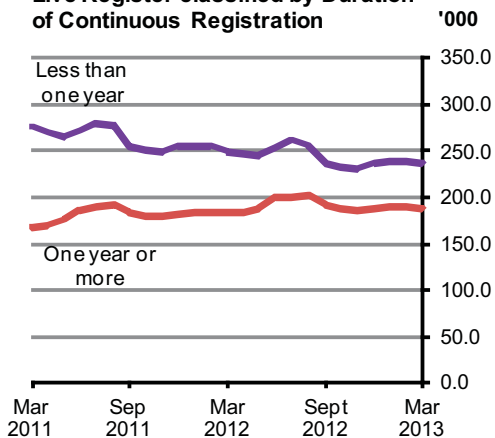
Enquiries:

Live Register statistics Live Register Section, ext 5491  
Email [labour@cso.ie](mailto:labour@cso.ie)  
General queries Information Section, ext 5021  
[information@cso.ie](mailto:information@cso.ie)

© Central Statistics Office  
The contents of this release may be quoted provided the source is given clearly and accurately. Reproduction for own or internal use is permitted.

On-line ISSN 2009-535X

**Live Register classified by Duration of Continuous Registration**



## Live Register duration of continuous registration

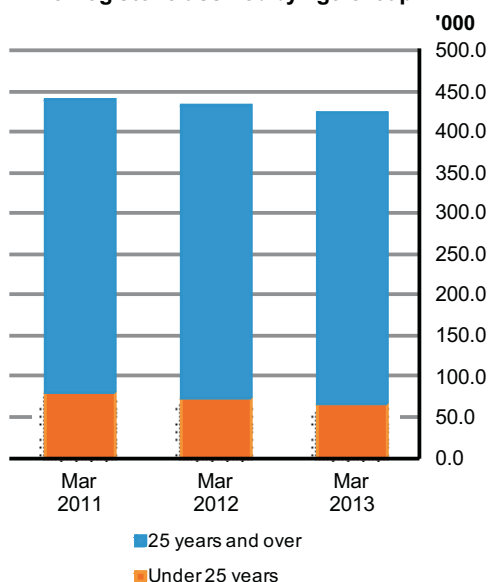
The number of long term claimants on the Live Register in March 2013 was 187,896. The number of male long term claimants decreased by 1,065 (-0.8%) in the year to March 2013, while females increased by 4,496 (+8.7%) giving an overall annual increase of 3,431 (+1.9%) in the number of long term claimants. *See table 7 and graph opposite.*

In March 55.8% (237,192) of all claimants on the Live Register were short term claimants. The comparable figure for March 2012 was 57.5% (249,589). The annual fall of 12,397 (-5.0%) in the number of short term claimants consisted of a decrease of 10,182 (-6.9%) in the number of male short term claimants and a decrease of 2,215 (-2.2%) in female short term claimants.

## Live Register casual and part-time workers

There were 89,798 casual and part-time workers on the Live Register in March, which represents 21.1% of the total Live Register. This compares with 20.4% one year earlier when there were 88,716 casual and part-time workers on the Live Register. In the year to March 2013 the number of casual and part-time workers increased by 1,082 (+1.2%), with the number of males increasing by 1,422 (+3.0%) and the number of females decreasing by 340 (-0.8%). *See table 8.*

**Live Register classified by Age Group**



## Live Register age groups

In the year to March 2013 the number of persons aged 25 and over on the Live Register decreased by 2,565 (-0.7%), and the number of persons aged under 25 decreased by 6,401 (-8.8%). Annual decreases in persons aged under 25 have occurred in all months since July 2010. The percentage of persons aged under 25 on the Live Register now stands at 15.7% for March 2013, down from 16.8% in March 2012 and 18.4% in March 2011. *See tables 1b and 1c and graph opposite.*

## Live Register new registrants

There were 36,574 new registrants on the Live Register in March 2013, consisting of 16,046 JB claims, 18,512 JA claims and 2,016 'Other Registrants'. Males accounted for 54.2% (19,839) and females 45.8% (16,735) of all new registrants. On average 3,968 male and 3,347 female new registrants joined the Live Register each week of the month. The difference between the number of new registrants on the Live Register and the change in the total number on the Live Register is accounted for by closed claims and movements between schemes. *See table 4.*

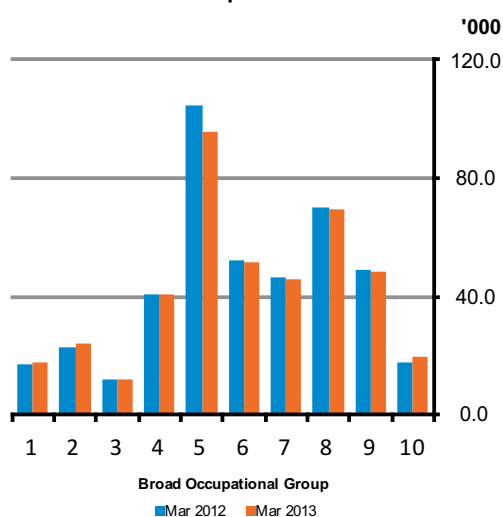
Data on Activation Programmes for February 2013 is included in the Annex of this release. Persons participating in Activation Programmes are not included in the Live Register count.

## Live Register by other classifications

Bearing in mind the overall annual decrease of 2.1% in the number of people on the Live Register in March the main other points which can be noted include:

- ◆ An annual increase of 1.2% brought the total number of Jobseeker's Allowance (JA) claimants to 306,361 in March 2013, while Jobseeker's Benefit (JB) claimants decreased to 84,433 (-14.7%) over the same period. As a result JA claimants account for 72.1% of all persons on the Live Register in March 2013 compared with 69.8% a year earlier. *See table 1a.*
- ◆ Annual decreases occurred in seven of the eight NUTS 3 regions with the largest percentage decrease in the South-West region (-4.5%). The only percentage increase occurred in the Midland region (+0.8%). *See table 5.*
- ◆ *Craft and related* (22.5%) remained the largest occupational group on the Live Register in March, despite the fact that the number in the group fell over the year by 9,213 (-8.8%) to 95,733. The second largest annual percentage decrease was in the *Other Occupations* group (-2.0%). *See table 6 and graph opposite.*
- ◆ In March Irish nationals accounted for 82.2% (349,242) of the number of persons on the Live Register. Of the 75,846 non-Irish nationals, the largest constituent group on the Live Register was nationals from the EU15 to EU27 States (42,246), followed by the UK (16,555). *See table 9*
- ◆ A further compositional analysis of the Live Register is also available. *See table 10*

Live Register classified by Last Held Occupation



### KEY

- 1- Managers and administrators
- 2- Professional
- 3- Associate professional and technical
- 4- Clerical and secretarial
- 5- Craft and related
- 6- Personal and protective service
- 7- Sales
- 8- Plant and machine operatives
- 9- Other occupation
- 10- No occupation

<sup>1</sup> While the 'No Occupation' group is excluded from the analysis its subtotals are included in the relevant calculations presented in the text.



**Table 1a Total persons on the Live Register**

Category	March 2012	February 2013	March 2013	Monthly change	Annual change
<b>Males</b>					
JB Claims	53,266	45,486	43,694	- 1,792	- 9,572
JA Applications	215,295	215,282	213,055	- 2,227	- 2,240
Other Registrants	11,682	12,087	12,247	+ 160	+ 565
<b>Total</b>	<b>280,243</b>	<b>272,855</b>	<b>268,996</b>	<b>- 3,859</b>	<b>- 11,247</b>
<b>Females</b>					
JB Claims	45,706	40,318	40,739	+ 421	- 4,967
JA Applications	87,559	93,873	93,306	- 567	+ 5,747
Other Registrants	20,546	21,830	22,047	+ 217	+ 1,501
<b>Total</b>	<b>153,811</b>	<b>156,021</b>	<b>156,092</b>	<b>+ 71</b>	<b>+ 2,281</b>
<b>All Persons</b>					
JB Claims	98,972	85,804	84,433	- 1,371	- 14,539
JA Applications	302,854	309,155	306,361	- 2,794	+ 3,507
Other Registrants	32,228	33,917	34,294	+ 377	+ 2,066
<b>Total</b>	<b>434,054</b>	<b>428,876</b>	<b>425,088</b>	<b>- 3,788</b>	<b>- 8,966</b>

**Table 1b Persons under 25 years of age on the Live Register**

Category	March 2012	February 2013	March 2013	Monthly change	Annual change
<b>Males</b>					
JB Claims	4,224	3,092	2,912	- 180	- 1,312
JA Applications	40,851	38,181	37,307	- 874	- 3,544
Other Registrants	112	98	101	+ 3	- 11
<b>Total</b>	<b>45,187</b>	<b>41,371</b>	<b>40,320</b>	<b>- 1,051</b>	<b>- 4,867</b>
<b>Females</b>					
JB Claims	3,715	2,886	2,735	- 151	- 980
JA Applications	23,818	23,875	23,279	- 596	- 539
Other Registrants	233	229	218	- 11	- 15
<b>Total</b>	<b>27,766</b>	<b>26,990</b>	<b>26,232</b>	<b>- 758</b>	<b>- 1,534</b>
<b>All Persons</b>					
JB Claims	7,939	5,978	5,647	- 331	- 2,292
JA Applications	64,669	62,056	60,586	- 1,470	- 4,083
Other Registrants	345	327	319	- 8	- 26
<b>Total</b>	<b>72,953</b>	<b>68,361</b>	<b>66,552</b>	<b>- 1,809</b>	<b>- 6,401</b>

**Table 1c Persons 25 years of age and over on the Live Register**

Category	March 2012	February 2013	March 2013	Monthly change	Annual change
<b>Males</b>					
JB Claims	49,042	42,394	40,782	- 1,612	- 8,260
JA Applications	174,444	177,101	175,748	- 1,353	+ 1,304
Other Registrants	11,570	11,989	12,146	+ 157	+ 576
<b>Total</b>	<b>235,056</b>	<b>231,484</b>	<b>228,676</b>	<b>- 2,808</b>	<b>- 6,380</b>
<b>Females</b>					
JB Claims	41,991	37,432	38,004	+ 572	- 3,987
JA Applications	63,741	69,998	70,027	+ 29	+ 6,286
Other Registrants	20,313	21,601	21,829	+ 228	+ 1,516
<b>Total</b>	<b>126,045</b>	<b>129,031</b>	<b>129,860</b>	<b>+ 829</b>	<b>+ 3,815</b>
<b>All Persons</b>					
JB Claims	91,033	79,826	78,786	- 1,040	- 12,247
JA Applications	238,185	247,099	245,775	- 1,324	+ 7,590
Other Registrants	31,883	33,590	33,975	+ 385	+ 2,092
<b>Total</b>	<b>361,101</b>	<b>360,515</b>	<b>358,536</b>	<b>- 1,979</b>	<b>- 2,565</b>

See StatBank Table LRM01

**Table 2a Total persons on the Live Register - Unadjusted and Seasonally Adjusted**

	Month	Unadjusted Series			Seasonally Adjusted Series <sup>1</sup>		
		Males	Females	All Persons	Males	Females	All Persons
2011	March	290,200	151,000	441,200	288,900	155,400	444,400
	April	286,700	152,800	439,600	286,900	155,700	442,500
	May	288,300	152,700	440,900	288,900	155,800	444,800
	June	296,100	161,800	457,900	289,700	156,100	445,800
	July	297,800	172,500	470,300	289,500	157,600	447,000
	August	296,900	172,900	469,700	289,200	160,000	449,200
	September	282,000	155,500	437,400	287,000	156,800	443,800
	October	277,600	152,800	430,400	287,000	158,300	445,300
	November	276,500	153,000	429,600	286,100	159,900	446,000
	December	279,700	155,100	434,800	283,200	159,400	442,600
2012	January	283,900	155,700	439,600	281,600	158,400	440,000
	February	283,500	156,000	439,400	280,400	157,900	438,300
	March	280,200	153,800	434,100	279,300	157,200	436,500
	April	277,400	152,600	430,000	279,500	157,000	436,400
	May	278,800	154,100	432,900	279,600	157,400	437,100
	June	286,700	165,300	452,000	280,100	159,500	439,600
	July	287,800	172,500	460,300	279,400	157,700	437,100
	August	286,600	169,600	456,300	278,600	157,100	435,700
	September	273,800	155,500	429,300	278,100	157,100	435,200
	October	268,500	151,600	420,200	277,000	157,100	434,000
	November	266,400	150,900	417,300	275,200	157,300	432,500
	December	269,900	153,800	423,700	273,300	157,700	431,000
2013	January	273,600	155,800	429,400	271,800	158,300	430,000
	February	272,900	156,000	428,900	270,200	158,100	428,300
	March	269,000	156,100	425,100	267,700	158,400	426,100

<sup>1</sup> Table contains revised figures.**Table 2b Persons under 25 years of age on the Live Register - Unadjusted and Seasonally Adjusted**

	Month	Unadjusted Series			Seasonally Adjusted Series <sup>1</sup>			
		Males	Females	All Persons	Males	Females	All Persons	
2011	March	51,500	29,800	81,400	51,800	31,600	83,400	
	April	49,900	29,500	79,400	51,500	31,400	82,900	
	May	50,400	30,500	81,000	51,200	31,400	82,700	
	June	53,300	33,700	87,000	50,900	31,200	82,100	
	July	53,900	35,400	89,300	50,500	31,200	81,800	
	August	53,300	35,500	88,800	50,000	31,200	81,200	
	September	49,200	31,700	80,900	49,100	30,900	80,000	
	October	47,400	30,300	77,700	49,200	31,100	80,200	
	November	46,200	29,400	75,600	48,700	31,300	80,000	
	December	45,900	28,500	74,300	47,400	30,600	78,000	
	2012	January	46,500	28,800	75,300	47,000	30,100	77,100
		February	46,200	28,700	74,900	46,200	29,600	75,800
March		45,200	27,800	73,000	45,700	29,300	75,000	
April		43,900	27,000	70,900	45,400	29,100	74,600	
May		44,500	28,200	72,600	45,300	29,000	74,300	
June		47,600	31,500	79,100	45,300	29,100	74,400	
July		48,100	32,600	80,700	44,900	28,800	73,700	
August		47,900	32,500	80,400	44,700	28,600	73,200	
September		44,400	29,300	73,700	44,200	28,500	72,700	
October		42,200	27,700	69,900	43,700	28,300	72,000	
November		40,700	26,500	67,200	42,900	28,200	71,100	
December		40,800	26,200	66,900	42,300	28,100	70,400	
2013	January	41,500	26,900	68,400	41,900	28,000	69,900	
	February	41,400	27,000	68,400	41,500	27,800	69,300	
	March	40,300	26,200	66,600	40,900	27,500	68,400	

<sup>1</sup> Table contains revised figures.

**Table 2c Persons 25 years of age and over on the Live Register - Unadjusted and Seasonally Adjusted**

	Month	Unadjusted Series			Seasonally Adjusted Series <sup>1</sup>			
		Males	Females	All Persons	Males	Females	All Persons	
2011	March	238,700	121,100	359,800	237,100	123,900	361,000	
	April	236,800	123,400	360,200	235,400	124,300	359,700	
	May	237,900	122,100	360,000	237,700	124,400	362,100	
	June	242,800	128,100	370,900	238,800	125,000	363,700	
	July	243,800	137,100	381,000	238,900	126,300	365,300	
	August	243,600	137,400	380,900	239,200	128,800	368,000	
	September	232,800	123,700	356,600	237,900	125,900	363,800	
	October	230,200	122,500	352,700	237,800	127,200	365,100	
	November	230,300	123,700	354,000	237,400	128,500	365,900	
	December	233,800	126,600	360,400	235,800	128,800	364,600	
	2012	January	237,400	126,900	364,200	234,600	128,300	362,900
		February	237,200	127,200	364,500	234,100	128,300	362,400
March		235,100	126,000	361,100	233,600	127,900	361,500	
April		233,500	125,600	359,100	234,000	127,900	361,900	
May		234,300	126,000	360,300	234,400	128,400	362,800	
June		239,100	133,800	372,900	234,800	130,300	365,200	
July		239,700	139,900	379,600	234,500	128,900	363,400	
August		238,800	137,100	375,900	234,000	128,500	362,500	
September		229,400	126,300	355,600	233,900	128,600	362,500	
October		226,300	123,900	350,300	233,300	128,800	362,000	
November		225,700	124,500	350,100	232,300	129,100	361,400	
December		229,100	127,700	356,800	231,000	129,600	360,600	
2013	January	232,200	128,900	361,000	229,800	130,200	360,100	
	February	231,500	129,000	360,500	228,700	130,200	358,900	
	March	228,700	129,900	358,500	226,800	130,900	357,700	

<sup>1</sup> Table contains revised figures.

**Table 3 Seasonally Adjusted Standardised Unemployment Rates (SUR)<sup>1</sup>**

Month	2008	2009	2010	2011	2012	2013
	%	%	%	%	%	%
January	4.9	9.5	13.1	14.5	15.0	14.1
February <sup>2</sup>	5.0	10.2	13.0	14.3	15.0	14.0
March	5.3	10.9	13.2	14.4	14.9	14.0
April	5.4	11.5	13.5	14.4	14.9	
May <sup>2</sup>	5.7	12.1	13.8	14.5	14.9	
June	6.0	12.3	13.7	14.5	14.9	
July	6.5	12.5	13.8	14.7	14.8	
August <sup>2</sup>	6.9	12.6	13.9	14.8	14.6	
September	7.2	12.9	14.3	14.7	14.5	
October	7.7	13.0	14.5	14.8	14.3	
November <sup>2</sup>	8.1	13.0	14.7	14.9	14.2 <sup>3</sup>	
December	8.6	13.0	14.7	14.9	14.1	
Annual average	6.4	12.0	13.8	14.6	14.7	

<sup>1</sup> Table contains revised figures. See Background Notes.

<sup>2</sup> Benchmark Quarterly National Household Survey (QNHS) calendar quarter estimates.

<sup>3</sup> The latest QNHS estimate of the unemployment rate (adjusted for seasonality) is: Oct - Dec 2012, 14.2%.

See StatBank Tables LRM02 and LRM03

**Table 4 Summary of flows<sup>1</sup> on and off the Live Register**

		Number of Weeks	Males				Females			
			Live Register	New Regis- trations	Outflow (derived)	Average Weekly Change	Live Register	New Regis- trations	Outflow (derived)	Average Weekly Change
<b>JB Claims</b>										
2012	March	5	53,266	9,215	11,266	- 410	45,706	7,103	9,334	- 446
	April	4	51,678	7,471	9,059	- 397	44,534	9,252	10,424	- 293
	May	4	50,379	6,629	7,928	- 325	43,610	5,858	6,782	- 231
	June	5	49,815	8,362	8,926	- 113	46,974	10,633	7,269	+ 673
	July	4	49,072	7,158	7,901	- 186	50,963	10,745	6,756	+ 997
	August	5	47,230	7,278	9,120	- 368	46,824	6,837	10,976	- 828
	September	4	44,251	6,226	9,205	- 745	39,412	5,752	13,164	- 1,853
	October	4	43,519	7,258	7,990	- 183	38,099	5,850	7,163	- 328
	November	5	43,211	9,493	9,801	- 62	38,109	10,073	10,063	+ 2
	December	4	44,433	6,217	4,995	+ 306	40,158	6,156	4,107	+ 512
2013	January	4	46,110	9,459	7,782	+ 419	40,618	9,322	8,862	+ 115
	February	4	45,486	7,081	7,705	- 156	40,318	7,321	7,621	- 75
	March	5	43,694	7,467	9,259	- 358	40,739	8,579	8,158	+ 84
<b>JA Applications</b>										
2012	March	5	215,295	12,102	13,550	- 290	87,559	6,694	7,075	- 76
	April	4	213,894	9,275	10,676	- 350	87,270	5,333	5,622	- 72
	May	4	216,412	10,185	7,667	+ 630	89,579	6,427	4,118	+ 577
	June	5	224,793	15,411	7,030	+ 1,676	96,660	10,843	3,762	+ 1,416
	July	4	226,574	11,278	9,497	+ 445	99,428	8,174	5,406	+ 692
	August	5	227,251	12,667	11,990	+ 135	100,535	8,008	6,901	+ 221
	September	4	217,633	11,798	21,416	- 2,405	94,578	7,474	13,431	- 1,489
	October	4	213,313	11,666	15,986	- 1,080	92,280	7,001	9,299	- 575
	November	5	211,367	13,524	15,470	- 389	91,463	8,166	8,983	- 163
	December	4	213,554	8,456	6,269	+ 547	92,080	4,734	4,117	+ 154
2013	January	4	215,478	10,433	8,509	+ 481	93,368	6,378	5,090	+ 322
	February	4	215,282	10,563	10,759	- 49	93,873	6,470	5,965	+ 126
	March	5	213,055	11,596	13,823	- 445	93,306	6,916	7,483	- 113
<b>Other Registrants</b>										
2012	March	5	11,682	825	533	+ 58	20,546	1,295	844	+ 90
	April	4	11,836	569	415	+ 39	20,789	1,183	940	+ 61
	May	4	11,972	500	364	+ 34	20,955	806	640	+ 42
	June	5	12,103	651	520	+ 26	21,629	1,509	835	+ 135
	July	4	12,144	565	524	+ 10	22,142	1,707	1,194	+ 128
	August	5	12,144	546	546	0	22,272	1,370	1,240	+ 26
	September	4	11,905	493	732	- 60	21,556	976	1,692	- 179
	October	4	11,713	557	749	- 48	21,248	937	1,245	- 77
	November	5	11,792	733	654	+ 16	21,335	1,403	1,316	+ 17
	December	4	11,899	467	360	+ 27	21,609	799	525	+ 69
2013	January	4	12,039	687	547	+ 35	21,783	1,237	1,063	+ 44
	February	4	12,087	586	538	+ 12	21,830	1,065	1,018	+ 12
	March	5	12,247	776	616	+ 32	22,047	1,240	1,023	+ 43

<sup>1</sup> Flow analysis: inflows and outflows published in this table do not take account of inter-scheme activity within the Live Register. For example, if a claimant exhausts his/her entitlement to JB and opens a new JA claim this is counted as an outflow in JB and an inflow in JA.



**Table 5 Persons on the Live Register classified by region**

NUTS2 and NUTS3 Regions <sup>1</sup>	March 2012	February 2013	March 2013	Monthly change	Annual change	Under 25 years	25 years & over
<b>Males</b>							
<b>Border, Midland and Western</b>	<b>84,894</b>	<b>83,680</b>	<b>82,583</b>	<b>- 1,097</b>	<b>- 2,311</b>	<b>12,894</b>	<b>69,689</b>
Border	39,067	38,280	37,775	- 505	- 1,292	6,129	31,646
Midland	21,220	21,137	20,899	- 238	- 321	3,260	17,639
West	24,607	24,263	23,909	- 354	- 698	3,505	20,404
<b>Southern and Eastern</b>	<b>195,349</b>	<b>189,175</b>	<b>186,413</b>	<b>- 2,762</b>	<b>- 8,936</b>	<b>27,426</b>	<b>158,987</b>
Dublin	68,805	67,020	66,377	- 643	- 2,428	10,219	56,158
Mid-East	27,006	26,062	25,753	- 309	- 1,253	3,785	21,968
Mid-West	23,915	23,016	22,676	- 340	- 1,239	3,364	19,312
South-East	36,966	36,069	35,484	- 585	- 1,482	5,455	30,029
South-West	38,657	37,008	36,123	- 885	- 2,534	4,603	31,520
<b>Total</b>	<b>280,243</b>	<b>272,855</b>	<b>268,996</b>	<b>- 3,859</b>	<b>- 11,247</b>	<b>40,320</b>	<b>228,676</b>
<b>Females</b>							
<b>Border, Midland and Western</b>	<b>48,412</b>	<b>49,612</b>	<b>49,630</b>	<b>+ 18</b>	<b>+ 1,218</b>	<b>8,576</b>	<b>41,054</b>
Border	21,954	22,128	22,065	- 63	+ 111	3,845	18,220
Midland	11,856	12,357	12,456	+ 99	+ 600	2,367	10,089
West	14,602	15,127	15,109	- 18	+ 507	2,364	12,745
<b>Southern and Eastern</b>	<b>105,399</b>	<b>106,409</b>	<b>106,462</b>	<b>+ 53</b>	<b>+ 1,063</b>	<b>17,656</b>	<b>88,806</b>
Dublin	35,035	35,571	35,620	+ 49	+ 585	6,136	29,484
Mid-East	15,082	15,453	15,569	+ 116	+ 487	2,425	13,144
Mid-West	13,662	13,573	13,492	- 81	- 170	2,293	11,199
South-East	20,085	20,185	20,430	+ 245	+ 345	3,616	16,814
South-West	21,535	21,627	21,351	- 276	- 184	3,186	18,165
<b>Total</b>	<b>153,811</b>	<b>156,021</b>	<b>156,092</b>	<b>+ 71</b>	<b>+ 2,281</b>	<b>26,232</b>	<b>129,860</b>
<b>All Persons</b>							
<b>Border, Midland and Western</b>	<b>133,306</b>	<b>133,292</b>	<b>132,213</b>	<b>- 1,079</b>	<b>- 1,093</b>	<b>21,470</b>	<b>110,743</b>
Border	61,021	60,408	59,840	- 568	- 1,181	9,974	49,866
Midland	33,076	33,494	33,355	- 139	+ 279	5,627	27,728
West	39,209	39,390	39,018	- 372	- 191	5,869	33,149
<b>Southern and Eastern</b>	<b>300,748</b>	<b>295,584</b>	<b>292,875</b>	<b>- 2,709</b>	<b>- 7,873</b>	<b>45,082</b>	<b>247,793</b>
Dublin	103,840	102,591	101,997	- 594	- 1,843	16,355	85,642
Mid-East	42,088	41,515	41,322	- 193	- 766	6,210	35,112
Mid-West	37,577	36,589	36,168	- 421	- 1,409	5,657	30,511
South-East	57,051	56,254	55,914	- 340	- 1,137	9,071	46,843
South-West	60,192	58,635	57,474	- 1,161	- 2,718	7,789	49,685
<b>Total</b>	<b>434,054</b>	<b>428,876</b>	<b>425,088</b>	<b>- 3,788</b>	<b>- 8,966</b>	<b>66,552</b>	<b>358,536</b>

<sup>1</sup> The composition of the regions is described in the Background Notes.

**Table 6 Persons on the Live Register classified by last held occupation**

Broad occupational group	March 2012	February 2013	March 2013	Monthly change	Annual change	Under 25 years	25 years & over
<b>Males</b>							
Managers and administrators	10,118	10,273	10,082	- 191	- 36	377	9,705
Professional	11,128	11,195	11,017	- 178	- 111	887	10,130
Associate professional and technical	6,975	6,967	6,868	- 99	- 107	871	5,997
Clerical and secretarial	11,332	11,198	11,253	+ 55	- 79	1,475	9,778
Craft and related	97,455	89,919	88,220	- 1,699	- 9,235	8,767	79,453
Personal and protective service	18,868	18,733	18,513	- 220	- 355	2,703	15,810
Sales	17,987	18,098	17,955	- 143	- 32	5,355	12,600
Plant and machine operatives	55,085	54,559	54,011	- 548	- 1,074	6,871	47,140
Other occupation	39,764	39,173	38,577	- 596	- 1,187	7,398	31,179
No occupation <sup>1</sup>	11,531	12,740	12,500	- 240	+ 969	5,616	6,884
<b>Total</b>	<b>280,243</b>	<b>272,855</b>	<b>268,996</b>	<b>- 3,859</b>	<b>- 11,247</b>	<b>40,320</b>	<b>228,676</b>
<b>Females</b>							
Managers and administrators	6,718	7,391	7,356	- 35	+ 638	198	7,158
Professional	11,929	12,856	12,963	+ 107	+ 1,034	922	12,041
Associate professional and technical	5,235	5,260	5,279	+ 19	+ 44	482	4,797
Clerical and secretarial	29,645	29,019	29,664	+ 645	+ 19	1,821	27,843
Craft and related	7,491	7,614	7,513	- 101	+ 22	1,081	6,432
Personal and protective service	33,063	33,176	33,036	- 140	- 27	6,238	26,798
Sales	28,623	28,032	27,792	- 240	- 831	6,816	20,976
Plant and machine operatives	15,355	15,659	15,659	0	+ 304	2,407	13,252
Other occupation	9,340	9,669	9,534	- 135	+ 194	2,739	6,795
No occupation <sup>1</sup>	6,412	7,345	7,296	- 49	+ 884	3,528	3,768
<b>Total</b>	<b>153,811</b>	<b>156,021</b>	<b>156,092</b>	<b>+ 71</b>	<b>+ 2,281</b>	<b>26,232</b>	<b>129,860</b>
<b>All Persons</b>							
Managers and administrators	16,836	17,664	17,438	- 226	+ 602	575	16,863
Professional	23,057	24,051	23,980	- 71	+ 923	1,809	22,171
Associate professional and technical	12,210	12,227	12,147	- 80	- 63	1,353	10,794
Clerical and secretarial	40,977	40,217	40,917	+ 700	- 60	3,296	37,621
Craft and related	104,946	97,533	95,733	- 1,800	- 9,213	9,848	85,885
Personal and protective service	51,931	51,909	51,549	- 360	- 382	8,941	42,608
Sales	46,610	46,130	45,747	- 383	- 863	12,171	33,576
Plant and machine operatives	70,440	70,218	69,670	- 548	- 770	9,278	60,392
Other occupation	49,104	48,842	48,111	- 731	- 993	10,137	37,974
No occupation <sup>1</sup>	17,943	20,085	19,796	- 289	+ 1,853	9,144	10,652
<b>Total</b>	<b>434,054</b>	<b>428,876</b>	<b>425,088</b>	<b>- 3,788</b>	<b>- 8,966</b>	<b>66,552</b>	<b>358,536</b>

<sup>1</sup> Includes those who never worked and those who have no stated occupation.

**Table 7 Persons on the Live Register classified by duration of continuous registration**

Duration	March 2012	February 2013	March 2013	Monthly change	Annual change	Under 25 years	25 years & over
<b>Males</b>							
Less than one year	147,253	139,481	137,071	- 2,410	- 10,182	25,144	111,927
One year or more	132,990	133,374	131,925	- 1,449	- 1,065	15,176	116,749
<b>Total</b>	<b>280,243</b>	<b>272,855</b>	<b>268,996</b>	<b>- 3,859</b>	<b>- 11,247</b>	<b>40,320</b>	<b>228,676</b>
<b>Females</b>							
Less than one year	102,336	99,928	100,121	+ 193	- 2,215	18,326	81,795
One year or more	51,475	56,093	55,971	- 122	+ 4,496	7,906	48,065
<b>Total</b>	<b>153,811</b>	<b>156,021</b>	<b>156,092</b>	<b>+ 71</b>	<b>+ 2,281</b>	<b>26,232</b>	<b>129,860</b>
<b>All Persons</b>							
Less than one year	249,589	239,409	237,192	- 2,217	- 12,397	43,470	193,722
One year or more	184,465	189,467	187,896	- 1,571	+ 3,431	23,082	164,814
<b>Total</b>	<b>434,054</b>	<b>428,876</b>	<b>425,088</b>	<b>- 3,788</b>	<b>- 8,966</b>	<b>66,552</b>	<b>358,536</b>

**Table 8 Casual and part-time workers on the Live Register**

		Males	Monthly change	Females	Monthly change	All Persons	Monthly change	
2011	March	45,603	+ 517	40,552	+ 579	86,155	+ 1,096	
	April	45,447	- 156	40,147	- 405	85,594	- 561	
	May	45,071	- 376	39,862	- 285	84,933	- 661	
	June	45,609	+ 538	40,156	+ 294	85,765	+ 832	
	July	45,639	+ 30	40,226	+ 70	85,865	+ 100	
	August	45,312	- 327	39,984	- 242	85,296	- 569	
	September	44,731	- 581	39,286	- 698	84,017	- 1,279	
	October	45,234	+ 503	39,795	+ 509	85,029	+ 1,012	
	November	45,914	+ 680	40,698	+ 903	86,612	+ 1,583	
	December	46,044	+ 130	40,771	+ 73	86,815	+ 203	
	2012	January	46,256	+ 212	40,773	+ 2	87,029	+ 214
		February	47,038	+ 782	41,176	+ 403	88,214	+ 1,185
March		47,539	+ 501	41,177	+ 1	88,716	+ 502	
April		47,614	+ 75	40,828	- 349	88,442	- 274	
May		47,626	+ 12	40,438	- 390	88,064	- 378	
June		47,891	+ 265	40,574	+ 136	88,465	+ 401	
July		47,797	- 94	40,244	- 330	88,041	- 424	
August		47,569	- 228	39,585	- 659	87,154	- 887	
September		46,643	- 926	38,447	- 1,138	85,090	- 2,064	
October		46,829	+ 186	38,834	+ 387	85,663	+ 573	
November		47,695	+ 866	39,786	+ 952	87,481	+ 1,818	
December		48,082	+ 387	39,987	+ 201	88,069	+ 588	
2013	January	47,829	- 253	40,095	+ 108	87,924	- 145	
	February	48,870	+ 1,041	40,910	+ 815	89,780	+ 1,856	
	March	48,961	+ 91	40,837	- 73	89,798	+ 18	

**Table 9 Persons on the Live Register classified by nationality grouping**

		Nationality grouping							
		Non-Irish nationals							
		United Kingdom	EU15 excl. Irl. & UK	EU15 to EU27 States	Other	Non-Irish nationals	Irish nationals	All Persons	
2011	March	17,956	3,817	43,722	13,099	78,594	362,599	441,193	
	April	18,021	3,729	42,698	13,075	77,523	362,048	439,571	
	May	18,075	3,711	41,791	13,401	76,978	363,969	440,947	
	June	18,648	3,829	42,013	14,431	78,921	379,027	457,948	
	July	19,006	3,872	41,732	14,675	79,285	390,999	470,284	
	August	18,925	3,847	41,330	14,893	78,995	390,718	469,713	
	September	17,894	3,586	40,000	13,941	75,421	362,020	437,441	
	October	17,708	3,545	40,202	13,582	75,037	355,395	430,432	
	November	17,648	3,571	40,788	13,512	75,519	354,048	429,567	
	December	17,798	3,605	41,263	13,554	76,220	358,564	434,784	
	2012	January	17,827	3,648	42,831	13,845	78,151	361,438	439,589
		February	17,783	3,685	43,341	13,946	78,755	360,667	439,422
March		17,521	3,608	43,025	13,926	78,080	355,974	434,054	
April		17,337	3,558	42,268	13,852	77,015	352,986	430,001	
May		17,447	3,551	41,634	14,151	76,783	356,124	432,907	
June		18,054	3,770	41,360	15,072	78,256	373,718	451,974	
July		18,290	3,756	41,167	15,209	78,422	381,901	460,323	
August		18,143	3,700	40,629	15,277	77,749	378,507	456,256	
September		17,135	3,525	39,335	14,324	74,319	355,016	429,335	
October		16,767	3,477	39,347	13,906	73,497	346,675	420,172	
November		16,695	3,530	39,935	13,588	73,748	343,529	417,277	
December		16,806	3,575	40,491	13,667	74,539	349,194	423,733	
2013	January	16,934	3,743	42,004	13,761	76,442	352,954	429,396	
	February	16,799	3,853	42,561	13,616	76,829	352,047	428,876	
	March	16,555	3,851	42,246	13,194	75,846	349,242	425,088	

**Table 10 Live Register Compositional Analysis**

	March 2010		March 2011		March 2012		March 2013	
	Number	% of total	Number	% of total	Number	% of total	Number	% of total
<b>Sex</b>								
Males	290,216	66.7	290,225	65.8	280,243	64.6	268,996	63.3
Females	144,905	33.3	150,968	34.2	153,811	35.4	156,092	36.7
<b>Total</b>	<b>435,121</b>	<b>100.0</b>	<b>441,193</b>	<b>100.0</b>	<b>434,054</b>	<b>100.0</b>	<b>425,088</b>	<b>100.0</b>
<b>Age</b>								
Under 25 years	84,991	19.5	81,356	18.4	72,953	16.8	66,552	15.7
25 years and over	350,130	80.5	359,837	81.6	361,101	83.2	358,536	84.3
<b>Total</b>	<b>435,121</b>	<b>100.0</b>	<b>441,193</b>	<b>100.0</b>	<b>434,054</b>	<b>100.0</b>	<b>425,088</b>	<b>100.0</b>
<b>Scheme</b>								
JB Claims	155,884	35.8	120,067	27.2	98,972	22.8	84,433	19.9
JA Applications	257,586	59.2	292,876	66.4	302,854	69.8	306,361	72.1
Other Registrants	21,651	5.0	28,250	6.4	32,228	7.4	34,294	8.1
<b>Total</b>	<b>435,121</b>	<b>100.0</b>	<b>441,193</b>	<b>100.0</b>	<b>434,054</b>	<b>100.0</b>	<b>425,088</b>	<b>100.0</b>
<b>Duration of Continuous Registration</b>								
Less than one year	323,388	74.3	274,566	62.2	249,589	57.5	237,192	55.8
One year or more	111,733	25.7	166,627	37.8	184,465	42.5	187,896	44.2
<b>Total</b>	<b>435,121</b>	<b>100.0</b>	<b>441,193</b>	<b>100.0</b>	<b>434,054</b>	<b>100.0</b>	<b>425,088</b>	<b>100.0</b>
<b>Nationality Grouping</b>								
Irish Nationals	355,080	81.6	362,599	82.2	355,974	82.0	349,242	82.2
Non-Irish Nationals	80,041	18.4	78,594	17.8	78,080	18.0	75,846	17.8
<b>Total</b>	<b>435,121</b>	<b>100.0</b>	<b>441,193</b>	<b>100.0</b>	<b>434,054</b>	<b>100.0</b>	<b>425,088</b>	<b>100.0</b>
<b>NUTS2 Regions<sup>1</sup></b>								
Border, Midland and Western	132,887	30.5	136,049	30.8	133,306	30.7	132,213	31.1
Southern and Eastern	302,234	69.5	305,144	69.2	300,748	69.3	292,875	68.9
<b>Total</b>	<b>435,121</b>	<b>100.0</b>	<b>441,193</b>	<b>100.0</b>	<b>434,054</b>	<b>100.0</b>	<b>425,088</b>	<b>100.0</b>
<b>Last Held Occupation</b>								
Managers and administrators	18,008	4.1	17,052	3.9	16,836	3.9	17,438	4.1
Professional	24,008	5.5	23,255	5.3	23,057	5.3	23,980	5.6
Associate professional and technical	12,909	3.0	12,777	2.9	12,210	2.8	12,147	2.9
Clerical and secretarial	42,974	9.9	41,753	9.5	40,977	9.4	40,917	9.6
Craft and related	119,305	27.4	114,427	25.9	104,946	24.2	95,733	22.5
Personal and protective service	47,221	10.9	51,025	11.6	51,931	12.0	51,549	12.1
Sales	42,843	9.8	45,638	10.3	46,610	10.7	45,747	10.8
Plant and machine operatives	70,116	16.1	70,416	16.0	70,440	16.2	69,670	16.4
Other occupation	45,447	10.4	49,560	11.2	49,104	11.3	48,111	11.3
No occupation <sup>2</sup>	12,290	2.8	15,290	3.5	17,943	4.1	19,796	4.7
<b>Total</b>	<b>435,121</b>	<b>100.0</b>	<b>441,193</b>	<b>100.0</b>	<b>434,054</b>	<b>100.0</b>	<b>425,088</b>	<b>100.0</b>
<b>Casual Status</b>								
No casual and part-time work	355,272	81.6	355,038	80.5	345,338	79.6	335,290	78.9
Casual and part-time work	79,849	18.4	86,155	19.5	88,716	20.4	89,798	21.1
<b>Total</b>	<b>435,121</b>	<b>100.0</b>	<b>441,193</b>	<b>100.0</b>	<b>434,054</b>	<b>100.0</b>	<b>425,088</b>	<b>100.0</b>

<sup>1</sup> The composition of the regions is described in the Background Notes.<sup>2</sup> Includes those who never worked and those who have no stated occupation.

## Annex - Activation Programmes

The table below contains the end of February 2013 data on the number of people availing of a range of programmes targeted primarily at the long-term unemployed (over 12 months) and other welfare recipients, including Lone Parents.

There were 83,421 people availing of these programmes in February 2013, which is an increase of 3,094 (+3.9%) from the previous year, when there were 80,327 people in activation programmes.

Persons on activation programmes are not counted as part of the monthly Live Register.

### Live Register Activation Programmes

	February 2012	January 2013	February 2013
<b>Back to Work Schemes</b>			
Back to Work allowance scheme - Employee strand <sup>1</sup>	137	14	13
Back to Work Enterprise allowance scheme -self employed strand	10,843	10,812	10,747
Short-term Enterprise Allowance <sup>2</sup>	1,165	1,002	988
<b>Total Back to Work payments</b>	<b>12,145</b>	<b>11,828</b>	<b>11,748</b>
<b>Other Activation Programmes</b>			
DSP Part-time Job Incentive	190	215	215
TUS - Community Work Placement Initiative (2011)	2,814	4,510	4,601
JobBridge (2011) <sup>3</sup>	3,762	5,565	5,832
<b>Total Other Activation Programmes</b>	<b>6,766</b>	<b>10,290</b>	<b>10,648</b>
<b>Community Employment Schemes (excluding Supervisors)</b>	<b>21,970</b>	<b>21,063</b>	<b>21,075</b>
<b>FAS Full Time Training for Unemployed People<sup>4</sup></b>	<b>9,022</b>	<b>9,346</b>	<b>9,379</b>
<b>Back to Education Courses</b>			
Vocational Training Opportunities Scheme (VTOS) <sup>5</sup>	N/A	N/A	N/A
Back to Education Allowance (BTEA) <sup>6</sup>	25,424	25,805	25,571
<b>Total Back to Education Courses</b>	<b>30,424</b>	<b>30,805</b>	<b>30,571</b>
<b>Total Activation Programmes</b>	<b>80,327</b>	<b>83,332</b>	<b>83,421</b>

<sup>1</sup> This scheme was closed to new applications from 1st May 2009.

<sup>2</sup> This scheme was introduced from 1st May 2009. It provides immediate support for someone in receipt of Jobseekers Benefit who wants to start a business.

<sup>3</sup> Contains revised figures for February 2012.

<sup>4</sup> Specific Skills Training/Local Training initiative/Traineeship/Return to Work. Breakdown became available for April 2012 Live Register release.

<sup>5</sup> VTOS figures are estimated at 5,000 each year.

<sup>6</sup> BTEA figures include all schemes but participants from JA & JB are not entitled to BTEA during the summer holidays. Includes MOMENTUM participants from February 2013.

## Background Notes

**Source and scope of the Live Register** The Live Register is compiled from returns made for each local office to the Central Statistics Office by the Department of Social Protection. It comprises of persons under 65 years of age in the following classes:

- ◆ All Claimants for Jobseekers Benefit (JB) excluding systematic short-time workers
- ◆ Applicants for Jobseekers Allowance (JA) excluding smallholders/farm assists and other self-employed persons
- ◆ Other registrants including applicants for credited Social Welfare contributions but excluding those directly involved in an industrial dispute.

**Reference Period** The reference periods for the Live Register results are as follows:  
 March 2013 – 23rd February to 29th March 2013  
 March 2012 – 25th February to 30th March 2012

**Unemployment statistics** The Live Register is not designed to measure unemployment. It includes part-time (those who work up to three days a week), seasonal and casual workers entitled to Jobseekers Allowance and or Jobseekers Benefit. **Unemployment is measured by the Quarterly National Household Survey** (formerly the Annual Labour Force Survey).

**Standardised unemployment rates** The Standardised Unemployment Rate (SUR) series in Table 3 is based on the estimated number of persons unemployed expressed as a percentage of the total economically active population (i.e. the Labour Force), using internationally comparable definitions of employment and unemployment, as recommended by the International Labour Office.

Official estimates of the number of persons unemployed and the unemployment rate are produced from the Quarterly National Household Survey (QNHS). The QNHS is the only source of information on unemployment and employment which can apply standard International Labour Organisation (ILO) methodology to the estimation of these key indicators. The background notes of the QNHS release contain more information on the ILO criteria. Given the timelag required to produce estimates from the QNHS and the quarterly periodicity, short-term trends in the Live Register are used to estimate more up-to-date monthly unemployment rates.

The seasonally adjusted QNHS estimate of unemployment is used as a benchmark for February (Quarter 1 QNHS), May (Quarter 2 QNHS), August (Quarter 3 QNHS) and November (Quarter 4 QNHS) each year. The latest QNHS benchmark is updated using the trend in the seasonally adjusted Live Register to allow the estimation of the SUR. Once new QNHS data is available it is used to revise the SUR series. The assumption underlying this methodology is that over short periods the change in the seasonally adjusted Live Register will represent accurately the change in unemployment which will be seen from the QNHS. This methodology has been used since the QNHS was first initiated at the end of 1997.

**QNHS** The Quarterly National Household Survey (QNHS), which began in September 1997, replaced the Labour Force Survey and provides quarterly estimates of the unemployment rate. Up to and including the fourth quarter of 2008 the QNHS operated on a seasonal quarter basis. As of the first quarter 2009 the QNHS is now undertaken on a calendar quarter basis.

The calendar reference quarters for survey results are:

Q1 - January to March, Q2 - April to June, Q3 - July to September and Q4 - October to December.

The calendar quarter estimates for Q4 2012 (adjusted for seasonality) are:

	Q1	Q2	Q3	Q4
	%	%	%	%
2007	4.5	4.7	4.6	4.9
2008	5.0	5.7	6.9	8.1
2009	10.2	12.1	12.6	13.0
2010	13.0	13.8	13.9	14.7
2011	14.3	14.5	14.8	14.9
2012	15.0	14.9	14.6	14.2

**Seasonal adjustment** Since January 2011 the seasonal adjustment of the Live Register is completed by applying the X-12-ARIMA model, developed by the U.S. Census Bureau. Seasonal adjustment is conducted using the indirect approach, where each individual series is independently adjusted (male under 25 years, female under 25 years, male 25 years and over and female 25 years and over). To preserve consistency between the individual and aggregate series, the series for gender, age group and total Live Register are then created from these four component series.

The X-12 ARIMA method has the X-11 moving averages process at its core, but builds on this by providing options for pre-treating the series using a regARIMA approach for prior adjustment and series extension. In essence this methodology will estimate seasonal factors while taking account of temporary changes, outliers, level shifts and calendar effects (e.g timing of Easter).

All Live Register series are updated monthly with the latest three years of seasonally adjusted data as part of the concurrent approach. The comprehensive annual review contains revisions to the entire series. Revisions to the series are typically very minor in scale.

For additional information on the use of X-12-ARIMA see detailed note in the January 2011 LiveRegister release.

**Jobseeker's Benefit Duration** Prior to 19 January 2004 Jobseeker's Benefit was payable for **15 months** (390 days).

From 19 January 2004, Jobseeker's Benefit could be paid for a maximum of 15 months (390 days) to people who had at least 260 paid PRSI contributions. Jobseeker's Benefit could be paid for a maximum of 12 months (312 days) to people who had less than 260 paid contributions (Refers to new claim).

Since 15 October 2008, Jobseeker's Benefit can be paid for a maximum of **12 months** (312 days) to people who have at least 260 paid PRSI contributions. Jobseeker's Benefit can be paid for a maximum of **9 months** (234 days) to people who have less than 260 paid contributions (Refers to new claims).

**Live Register Flows** Live Register flows data is sourced from information collected by the Department of Social Protection. The aggregate of new registrations for each month is used in conjunction with the net change over the same period to calculate the outflow from the register. A new registration is defined as anybody on the Live Register in a particular month who was not on it the previous month. Inflows and outflows published in this release do not take account of inter-scheme activity within the Live Register. For example, if a claimant exhausts his/her entitlement to JB and opens a new JA claim this is counted as an outflow in JB and an inflow in JA.

**Live Register Area Analysis** The basis of the area analysis in Live Register statistics is the Department of Social Protection local office of registration. The areas served by Local Employment Offices do not correspond to specific geographic boundaries. Therefore, registrants at a given local office do not necessarily come from a particular region or area which can be precisely delineated e.g. data for the Cork City Local Office of Registration refers to all persons signing on in Cork City but may include persons not resident in Cork City. **The latest available Live Register data by Province, County and Local Office of Registration will be released on the CSO website through the CSO Main Data Dissemination Service, StatBank one day after the publication of this release.**



**NUTS2 and NUTS3 regions** The Regional classifications are based on the NUTS (Nomenclature of Territorial Units) classification used by Eurostat. The NUTS3 regions correspond to the eight Regional Authorities established under the Local Government Act, 1991 (Regional Authorities) (Establishment) Order, 1993, which came into operation on 1 January 1994. The NUTS2 regions, which were proposed by Government and agreed by Eurostat in 1999, are groupings of the NUTS3 regions.

**Border, Midland and Western NUTS2 Region**

<b>Border</b>	Cavan Donegal Leitrim Louth Monaghan Sligo
<b>Midland</b>	Laois Longford Offaly Westmeath
<b>West</b>	Galway City Galway County Mayo Roscommon

**Southern and Eastern NUTS2 Region**

<b>Dublin</b>	Dublin City Dun Laoghaire-Rathdown Fingal South Dublin
<b>Mid-East</b>	Kildare Meath Wicklow
<b>Mid-West</b>	Clare Limerick City Limerick County North Tipperary
<b>South-East</b>	Carlow Kilkenny South Tipperary Waterford City Waterford County Wexford
<b>South-West</b>	Cork City Cork County Kerry

**Occupations** Live Register occupational data is sourced from information collected by the Department of Social Protection on the most recent occupation of claimants when they sign on the Live Register. The classification used is based on the UK Standard Occupational Classification (SOC). “No occupation” is an additional category and includes those who have never worked and those who have no stated occupation.

**Age by Duration Analysis** Detailed tables relating to regional and scheme data are available on the CSO website through the CSO Main Data Dissemination Service, StatBank on a bi-annual basis, at the following link:

<http://cso.ie/shorturl.aspx/142>

**Casual and part-time workers** The casual and part-time workers’ figure is based on data supplied by the Department of Social Protection. People may apply for Jobseeker’s Benefit or Jobseeker’s Allowance if they only work for part of a week and be included on the Live Register.

**Nationality** Data in the nationality grouping table is sourced from information collected by the Department of Social Protection on the nationality of claimants when they first sign on the Live Register.

**CSO StatBank** More detailed information on geographic breakdowns of the Live Register and duration of continuous registration along with all Live Register published data can be found on the CSO Main Data Dissemination Service, StatBank on the CSO website at the link:

<http://cso.ie/shorturl.aspx/39>

For further information or assistance use the contact details on the front page of the release or e-mail [labour@cso.ie](mailto:labour@cso.ie)