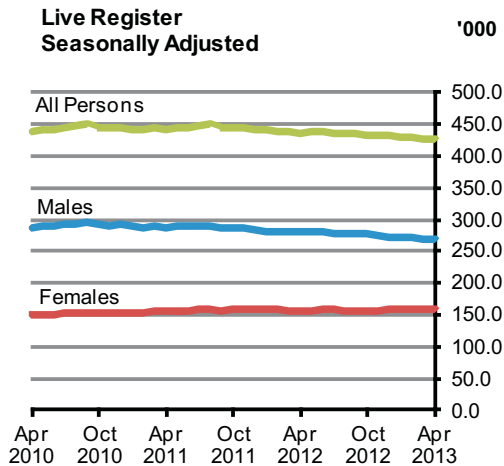




Live Register

April 2013



	Live Register Total	Seasonally Adjusted	Standardised Unemployment Rate (SUR)%
April 2012	430,001	436,800	14.9
March 2013	425,088	427,000	14.0
April 2013	417,593	426,900	14.0
			Percentage Points
Change in month	-	- 100	0.0
Change in year	- 12,408	-	- 0.9

Standardised unemployment rate unchanged at 14.0% in April

The standardised unemployment rate (SUR) in April 2013 was 14.0%, unchanged from the March 2013 rate. The seasonally adjusted unemployment rate from the most recent Quarterly National Household Survey (QNHS) was 14.2% in the fourth quarter of 2012. *See table 3.*

On a seasonally adjusted basis the Live Register total recorded a monthly decrease of 100 in April 2013, bringing the seasonally adjusted total to 426,900. *See table 2a.*

In unadjusted terms there were 417,593 people signing on the Live Register in April 2013. This represents an annual decrease of 12,408 (-2.9%). *See table 1a.*

Other features include:

- ◆ On a seasonally adjusted basis the Live Register showed a monthly decrease of 200 males in April 2013, while females saw no change over the same period. *See table 2a.*
- ◆ The number of male claimants decreased by 12,391 (-4.5%) to 265,017 over the year while female claimants showed little change decreasing by 17 to 152,576. This compares with a decrease of 9,337 (-3.3%) to 277,408 for males and a decrease of 233 (-0.2%) to 152,593 for females in the year to April 2012. *See table 1a.*

The Live Register is not designed to measure unemployment. It includes part-time workers (those who work up to three days a week), seasonal and casual workers entitled to Jobseeker's Benefit or Allowance. Unemployment is measured by the Quarterly National Household Survey and the latest estimated number of persons unemployed as of the fourth quarter of 2012 was 294,600.

For more information contact Sabrina Bowen at 021 453 5151, Karen Desmond at 021 453 5534 or Brendan Curtin at 021 453 5577.

Published by the Central Statistics Office, Ireland.

Ardee Road Dublin 6 Ireland
Skehard Road Cork Ireland

LoCall: 1890 313 414 (ROI)
0870 876 0256 (UK/Nl)

Tel: +353 1 498 4000 Fax: +353 1 498 4229
Tel: +353 21 453 5000 Fax: +353 21 453 5492

Both offices may be contacted through any of these telephone numbers.

CSO on the Web: www.cso.ie
and go to
Labour Market and Earnings: Labour Market

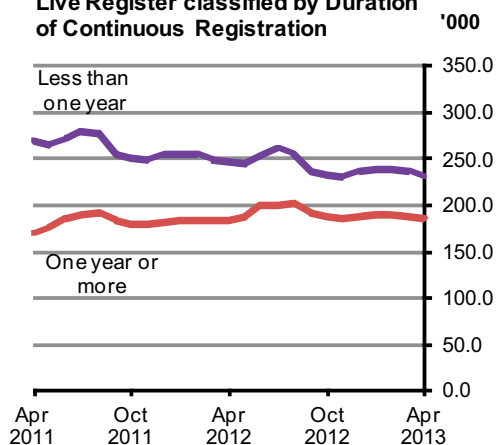
Director General: Pádraig Dalton

Enquiries:

Live Register statistics Live Register Section, ext 5491
Email labour@cso.ie
General queries Information Section, ext 5021
Email information@cso.ie

© Central Statistics Office
The contents of this release may be quoted provided the source is given clearly and accurately. Reproduction for own or internal use is permitted.

Live Register classified by Duration of Continuous Registration



Live Register duration of continuous registration

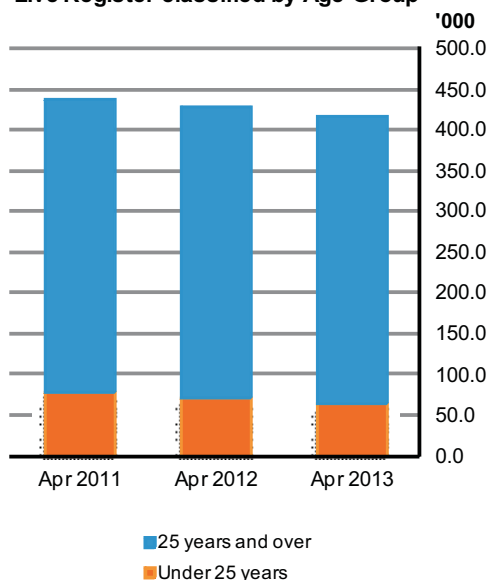
The number of long term claimants on the Live Register in April 2013 was 186,063. The number of male long term claimants decreased by 1,859 (-1.4%) in the year to April 2013, while females increased by 3,869 (+7.5%) giving an overall annual increase of 2,010 (+1.1%) in the number of long term claimants. *See table 7 and graph opposite.*

In April 55.4% (231,530) of all claimants on the Live Register were short term claimants. The comparable figure for April 2012 was 57.2% (245,948). The annual fall of 14,418 (-5.9%) in the number of short term claimants consisted of a decrease of 10,532 (-7.3%) in the number of male short term claimants and a decrease of 3,886 (-3.8%) in female short term claimants.

Live Register casual and part-time workers

There were 88,909 casual and part-time workers on the Live Register in April, which represents 21.3% of the total Live Register. This compares with 20.6% one year earlier when there were 88,442 casual and part-time workers on the Live Register. In the year to April 2013 the number of casual and part-time workers increased by 467 (+0.5%), with the number of males increasing by 913 (+1.9%) and the number of females decreasing by 446 (-1.1%). *See table 8.*

Live Register classified by Age Group



Live Register age groups

In the year to April 2013 the number of persons aged 25 and over on the Live Register decreased by 6,447 (-1.8%), and the number of persons aged under 25 decreased by 5,961 (-8.4%). Annual decreases in persons aged under 25 have occurred in all months since July 2010. The percentage of persons aged under 25 on the Live Register now stands at 15.6% for April 2013, down from 16.5% in April 2012 and 18.1% in April 2011. *See tables 1b and 1c and graph opposite.*

Live Register new registrants

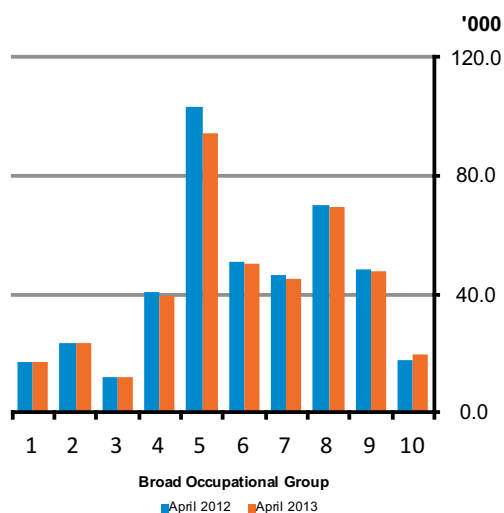
There were 29,859 new registrants on the Live Register in April 2013, consisting of 13,267 JB claims, 15,130 JA claims and 1,462 'Other Registrants'. Males accounted for 53.7% (16,027) and females 46.3% (13,832) of all new registrants. On average 4,007 male and 3,458 female new registrants joined the Live Register each week of the month. The difference between the number of new registrants on the Live Register and the change in the total number on the Live Register is accounted for by closed claims and movements between schemes. *See table 4.*

As of 3 April 2013, Jobseeker's Benefit can be paid for a maximum of 9 months (234 days) to people who have 260 paid PRSI contributions. Jobseekers Benefit can be paid for a maximum of 6 months (156 days) to people who have less than 260 paid contributions (Refers to new claims). Claimants getting Jobseekers Benefit for 6 months or more on 3 April 2013 (or 3 months for people with fewer than 260 contributions) will not be affected.

Data on Activation Programmes for March 2013 is included in the Annex of this release. Persons participating in Activation Programmes are not included in the Live Register count.

Live Register by other classifications

Live Register classified by Last Held Occupation



KEY

- 1- Managers and administrators
- 2- Professional
- 3- Associate professional and technical
- 4- Clerical and secretarial
- 5- Craft and related
- 6- Personal and protective service
- 7- Sales
- 8- Plant and machine operatives
- 9- Other occupation
- 10- No occupation

Bearing in mind the overall annual decrease of 2.9% in the number of people on the Live Register in April the main other points which can be noted include:

- ◆ An annual increase of 0.9% brought the total number of Jobseeker's Allowance (JA) claimants to 303,770 in April 2013, while Jobseeker's Benefit (JB) claimants decreased to 79,736 (-17.1%) over the same period. As a result JA claimants account for 72.7% of all persons on the Live Register in April 2013 compared with 70.0% a year earlier. *See table 1a.*
- ◆ Annual decreases occurred in seven of the eight NUTS 3 regions with the largest percentage decrease in the Mid-West region (-4.8%). The only percentage increase occurred in the Midland region (+0.2%). *See table 5.*
- ◆ *Craft and related* (22.5%) remained the largest occupational group on the Live Register in April, despite the fact that the number in the group fell over the year by 9,521 (-9.2%) to 94,105. The second largest annual percentage decrease was in the *Clerical and secretarial* group (-4.1%). *See table 6 and graph opposite.*
- ◆ In April Irish nationals accounted for 82.2% (343,231) of the number of persons on the Live Register. Of the 74,362 non-Irish nationals, the largest constituent group on the Live Register was nationals from the EU15 to EU27 States (41,635), followed by the UK (16,180). *See table 9*
- ◆ A further compositional analysis of the Live Register is also available. *See table 10.*

¹ While the 'No Occupation' group is excluded from the analysis its subtotals are included in the relevant calculations presented in the text.

Table 1a Total persons on the Live Register

Category	April 2012	March 2013	April 2013	Monthly change	Annual change
Males					
JB Claims	51,678	43,694	41,678	- 2,016	- 10,000
JA Applications	213,894	213,055	211,102	- 1,953	- 2,792
Other Registrants	11,836	12,247	12,237	- 10	+ 401
Total	277,408	268,996	265,017	- 3,979	- 12,391
Females					
JB Claims	44,534	40,739	38,058	- 2,681	- 6,476
JA Applications	87,270	93,306	92,668	- 638	+ 5,398
Other Registrants	20,789	22,047	21,850	- 197	+ 1,061
Total	152,593	156,092	152,576	- 3,516	- 17
All Persons					
JB Claims	96,212	84,433	79,736	- 4,697	- 16,476
JA Applications	301,164	306,361	303,770	- 2,591	+ 2,606
Other Registrants	32,625	34,294	34,087	- 207	+ 1,462
Total	430,001	425,088	417,593	- 7,495	- 12,408

Table 1b Persons under 25 years of age on the Live Register

Category	April 2012	March 2013	April 2013	Monthly change	Annual change
Males					
JB Claims	3,929	2,912	2,753	- 159	- 1,176
JA Applications	39,853	37,307	36,509	- 798	- 3,344
Other Registrants	111	101	99	- 2	- 12
Total	43,893	40,320	39,361	- 959	- 4,532
Females					
JB Claims	3,498	2,735	2,546	- 189	- 952
JA Applications	23,293	23,279	22,843	- 436	- 450
Other Registrants	237	218	210	- 8	- 27
Total	27,028	26,232	25,599	- 633	- 1,429
All Persons					
JB Claims	7,427	5,647	5,299	- 348	- 2,128
JA Applications	63,146	60,586	59,352	- 1,234	- 3,794
Other Registrants	348	319	309	- 10	- 39
Total	70,921	66,552	64,960	- 1,592	- 5,961

Table 1c Persons 25 years of age and over on the Live Register

Category	April 2012	March 2013	April 2013	Monthly change	Annual change
Males					
JB Claims	47,749	40,782	38,925	- 1,857	- 8,824
JA Applications	174,041	175,748	174,593	- 1,155	+ 552
Other Registrants	11,725	12,146	12,138	- 8	+ 413
Total	233,515	228,676	225,656	- 3,020	- 7,859
Females					
JB Claims	41,036	38,004	35,512	- 2,492	- 5,524
JA Applications	63,977	70,027	69,825	- 202	+ 5,848
Other Registrants	20,552	21,829	21,640	- 189	+ 1,088
Total	125,565	129,860	126,977	- 2,883	+ 1,412
All Persons					
JB Claims	88,785	78,786	74,437	- 4,349	- 14,348
JA Applications	238,018	245,775	244,418	- 1,357	+ 6,400
Other Registrants	32,277	33,975	33,778	- 197	+ 1,501
Total	359,080	358,536	352,633	- 5,903	- 6,447

See StatBank Table LRM01.

Table 2a Total persons on the Live Register - Unadjusted and Seasonally Adjusted

	Month	Unadjusted Series			Seasonally Adjusted Series ¹			
		Males	Females	All Persons	Males	Females	All Persons	
2011	April	286,700	152,800	439,600	287,100	155,700	442,700	
	May	288,300	152,700	440,900	288,900	155,800	444,800	
	June	296,100	161,800	457,900	289,500	156,100	445,700	
	July	297,800	172,500	470,300	289,300	157,600	446,800	
	August	296,900	172,900	469,700	288,900	160,100	449,000	
	September	282,000	155,500	437,400	286,600	156,700	443,300	
	October	277,600	152,800	430,400	286,700	158,300	445,000	
	November	276,500	153,000	429,600	285,900	159,900	445,800	
	December	279,700	155,100	434,800	283,200	159,400	442,500	
	2012	January	283,900	155,700	439,600	281,800	158,300	440,200
		February	283,500	156,000	439,400	280,900	158,000	438,900
		March	280,200	153,800	434,100	280,100	157,100	437,200
April		277,400	152,600	430,000	279,800	157,000	436,800	
May		278,800	154,100	432,900	279,600	157,500	437,000	
June		286,700	165,300	452,000	279,900	159,400	439,400	
July		287,800	172,500	460,300	279,000	157,700	436,700	
August		286,600	169,600	456,300	278,200	157,100	435,300	
September		273,800	155,500	429,300	277,700	157,100	434,700	
October		268,500	151,600	420,200	276,500	157,100	433,700	
November		266,400	150,900	417,300	274,900	157,400	432,300	
December		269,900	153,800	423,700	273,200	157,800	431,000	
2013	January	273,600	155,800	429,400	272,000	158,200	430,300	
	February	272,900	156,000	428,900	270,800	158,100	428,900	
	March	269,000	156,100	425,100	268,800	158,300	427,000	
	April	265,000	152,600	417,600	268,600	158,300	426,900	

¹ Table contains revised figures.**Table 2b Persons under 25 years of age on the Live Register - Unadjusted and Seasonally Adjusted**

	Month	Unadjusted Series			Seasonally Adjusted Series ¹			
		Males	Females	All Persons	Males	Females	All Persons	
2011	April	49,900	29,500	79,400	51,500	31,400	82,900	
	May	50,400	30,500	81,000	51,200	31,400	82,700	
	June	53,300	33,700	87,000	50,900	31,200	82,000	
	July	53,900	35,400	89,300	50,500	31,200	81,700	
	August	53,300	35,500	88,800	49,900	31,200	81,100	
	September	49,200	31,700	80,900	49,000	30,700	79,700	
	October	47,400	30,300	77,700	49,000	31,100	80,100	
	November	46,200	29,400	75,600	48,600	31,300	80,000	
	December	45,900	28,500	74,300	47,400	30,600	78,000	
	2012	January	46,500	28,800	75,300	47,000	30,100	77,200
		February	46,200	28,700	74,900	46,400	29,800	76,200
		March	45,200	27,800	73,000	45,900	29,400	75,200
April		43,900	27,000	70,900	45,500	29,100	74,600	
May		44,500	28,200	72,600	45,200	29,000	74,300	
June		47,600	31,500	79,100	45,300	29,100	74,400	
July		48,100	32,600	80,700	44,800	28,800	73,600	
August		47,900	32,500	80,400	44,600	28,500	73,100	
September		44,400	29,300	73,700	44,100	28,400	72,500	
October		42,200	27,700	69,900	43,600	28,300	71,800	
November		40,700	26,500	67,200	42,800	28,200	71,000	
December		40,800	26,200	66,900	42,300	28,100	70,400	
2013	January	41,500	26,900	68,400	42,000	28,100	70,100	
	February	41,400	27,000	68,400	41,600	28,000	69,600	
	March	40,300	26,200	66,600	41,100	27,600	68,700	
	April	39,400	25,600	65,000	40,800	27,800	68,700	

¹ Table contains revised figures.

Table 2c Persons 25 years of age and over on the Live Register - Unadjusted and Seasonally Adjusted

	Month	Unadjusted Series			Seasonally Adjusted Series ¹			
		Males	Females	All Persons	Males	Females	All Persons	
2011	April	236,800	123,400	360,200	235,600	124,300	359,900	
	May	237,900	122,100	360,000	237,700	124,400	362,100	
	June	242,800	128,100	370,900	238,700	125,000	363,600	
	July	243,800	137,100	381,000	238,800	126,300	365,100	
	August	243,600	137,400	380,900	239,000	128,900	367,900	
	September	232,800	123,700	356,600	237,600	126,000	363,600	
	October	230,200	122,500	352,700	237,600	127,300	364,900	
	November	230,300	123,700	354,000	237,300	128,600	365,800	
	December	233,800	126,600	360,400	235,700	128,700	364,500	
	2012	January	237,400	126,900	364,200	234,800	128,200	363,000
		February	237,200	127,200	364,500	234,500	128,200	362,700
		March	235,100	126,000	361,100	234,200	127,700	361,900
April		233,500	125,600	359,100	234,300	127,900	362,200	
May		234,300	126,000	360,300	234,300	128,400	362,800	
June		239,100	133,800	372,900	234,700	130,400	365,000	
July		239,700	139,900	379,600	234,200	128,900	363,100	
August		238,800	137,100	375,900	233,600	128,600	362,200	
September		229,400	126,300	355,600	233,500	128,700	362,200	
October		226,300	123,900	350,300	233,000	128,900	361,800	
November		225,700	124,500	350,100	232,100	129,200	361,300	
December		229,100	127,700	356,800	231,000	129,600	360,600	
2013	January	232,200	128,900	361,000	230,000	130,100	360,200	
	February	231,500	129,000	360,500	229,200	130,100	359,300	
	March	228,700	129,900	358,500	227,700	130,600	358,300	
	April	225,700	127,000	352,600	227,700	130,400	358,200	

¹ Table contains revised figures.

Table 3 Seasonally Adjusted Standardised Unemployment Rates (SUR)¹

Month	2008	2009	2010	2011	2012	2013
	%	%	%	%	%	%
January	4.9	9.5	13.1	14.5	15.0	14.1
February ²	5.0	10.2	13.0	14.3	15.0	14.1
March	5.3	10.9	13.2	14.4	14.9	14.0
April	5.4	11.5	13.5	14.4	14.9	14.0
May ²	5.7	12.1	13.8	14.5	14.9	
June	6.0	12.3	13.7	14.5	14.9	
July	6.5	12.5	13.8	14.7	14.8	
August ²	6.9	12.6	13.9	14.8	14.6	
September	7.2	12.9	14.3	14.7	14.5	
October	7.7	13.0	14.5	14.8	14.3	
November ²	8.1	13.0	14.7	14.9	14.2 ³	
December	8.6	13.0	14.7	14.9	14.1	
Annual average	6.4	12.0	13.8	14.6	14.7	

¹ Table contains revised figures. See Background Notes.

² Benchmark Quarterly National Household Survey (QNHS) calendar quarter estimates.

³ The latest QNHS estimate of the unemployment rate (adjusted for seasonality) is: Oct - Dec 2012, 14.2%.

See StatBank Tables LRM02 and LRM03.

Table 4 Summary of flows¹ on and off the Live Register

		Number of Weeks	Males				Females			
			Live Register	New Regis- trations	Outflow (derived)	Average Weekly Change	Live Register	New Regis- trations	Outflow (derived)	Average Weekly Change
JB Claims										
2012	April	4	51,678	7,471	9,059	- 397	44,534	9,252	10,424	- 293
	May	4	50,379	6,629	7,928	- 325	43,610	5,858	6,782	- 231
	June	5	49,815	8,362	8,926	- 113	46,974	10,633	7,269	+ 673
	July	4	49,072	7,158	7,901	- 186	50,963	10,745	6,756	+ 997
	August	5	47,230	7,278	9,120	- 368	46,824	6,837	10,976	- 828
	September	4	44,251	6,226	9,205	- 745	39,412	5,752	13,164	- 1,853
	October	4	43,519	7,258	7,990	- 183	38,099	5,850	7,163	- 328
	November	5	43,211	9,493	9,801	- 62	38,109	10,073	10,063	+ 2
	December	4	44,433	6,217	4,995	+ 306	40,158	6,156	4,107	+ 512
2013	January	4	46,110	9,459	7,782	+ 419	40,618	9,322	8,862	+ 115
	February	4	45,486	7,081	7,705	- 156	40,318	7,321	7,621	- 75
	March	5	43,694	7,467	9,259	- 358	40,739	8,579	8,158	+ 84
	April	4	41,678	6,150	8,166	- 504	38,058	7,117	9,798	- 670
JA Applications										
2012	April	4	213,894	9,275	10,676	- 350	87,270	5,333	5,622	- 72
	May	4	216,412	10,185	7,667	+ 630	89,579	6,427	4,118	+ 577
	June	5	224,793	15,411	7,030	+ 1,676	96,660	10,843	3,762	+ 1,416
	July	4	226,574	11,278	9,497	+ 445	99,428	8,174	5,406	+ 692
	August	5	227,251	12,667	11,990	+ 135	100,535	8,008	6,901	+ 221
	September	4	217,633	11,798	21,416	- 2,405	94,578	7,474	13,431	- 1,489
	October	4	213,313	11,666	15,986	- 1,080	92,280	7,001	9,299	- 575
	November	5	211,367	13,524	15,470	- 389	91,463	8,166	8,983	- 163
	December	4	213,554	8,456	6,269	+ 547	92,080	4,734	4,117	+ 154
2013	January	4	215,478	10,433	8,509	+ 481	93,368	6,378	5,090	+ 322
	February	4	215,282	10,563	10,759	- 49	93,873	6,470	5,965	+ 126
	March	5	213,055	11,596	13,823	- 445	93,306	6,916	7,483	- 113
	April	4	211,102	9,344	11,297	- 488	92,668	5,786	6,424	- 160
Other Registrants										
2012	April	4	11,836	569	415	+ 39	20,789	1,183	940	+ 61
	May	4	11,972	500	364	+ 34	20,955	806	640	+ 42
	June	5	12,103	651	520	+ 26	21,629	1,509	835	+ 135
	July	4	12,144	565	524	+ 10	22,142	1,707	1,194	+ 128
	August	5	12,144	546	546	0	22,272	1,370	1,240	+ 26
	September	4	11,905	493	732	- 60	21,556	976	1,692	- 179
	October	4	11,713	557	749	- 48	21,248	937	1,245	- 77
	November	5	11,792	733	654	+ 16	21,335	1,403	1,316	+ 17
	December	4	11,899	467	360	+ 27	21,609	799	525	+ 69
2013	January	4	12,039	687	547	+ 35	21,783	1,237	1,063	+ 44
	February	4	12,087	586	538	+ 12	21,830	1,065	1,018	+ 12
	March	5	12,247	776	616	+ 32	22,047	1,240	1,023	+ 43
	April	4	12,237	533	543	- 3	21,850	929	1,126	- 49

¹ Flow analysis: inflows and outflows published in this table do not take account of inter-scheme activity within the Live Register. For example, if a claimant exhausts his/her entitlement to JB and opens a new JA claim this is counted as an outflow in JB and an inflow in JA.

Table 5 Persons on the Live Register classified by region

NUTS2 and NUTS3 Regions ¹	April 2012	March 2013	April 2013	Monthly change	Annual change	Under 25 years	25 years & over
Males							
Border, Midland and Western	83,935	82,583	80,979	- 1,604	- 2,956	12,431	68,548
Border	38,858	37,775	36,962	- 813	- 1,896	5,873	31,089
Midland	20,970	20,899	20,550	- 349	- 420	3,172	17,378
West	24,107	23,909	23,467	- 442	- 640	3,386	20,081
Southern and Eastern	193,473	186,413	184,038	- 2,375	- 9,435	26,930	157,108
Dublin	68,487	66,377	65,614	- 763	- 2,873	10,061	55,553
Mid-East	26,760	25,753	25,392	- 361	- 1,368	3,707	21,685
Mid-West	23,596	22,676	22,332	- 344	- 1,264	3,312	19,020
South-East	36,583	35,484	35,055	- 429	- 1,528	5,298	29,757
South-West	38,047	36,123	35,645	- 478	- 2,402	4,552	31,093
Total	277,408	268,996	265,017	- 3,979	- 12,391	39,361	225,656
Females							
Border, Midland and Western	48,042	49,630	48,472	- 1,158	+ 430	8,310	40,162
Border	21,827	22,065	21,546	- 519	- 281	3,723	17,823
Midland	11,761	12,456	12,249	- 207	+ 488	2,339	9,910
West	14,454	15,109	14,677	- 432	+ 223	2,248	12,429
Southern and Eastern	104,551	106,462	104,104	- 2,358	- 447	17,289	86,815
Dublin	34,983	35,620	35,019	- 601	+ 36	6,011	29,008
Mid-East	15,117	15,569	15,306	- 263	+ 189	2,382	12,924
Mid-West	13,611	13,492	13,093	- 399	- 518	2,257	10,836
South-East	19,937	20,430	20,044	- 386	+ 107	3,551	16,493
South-West	20,903	21,351	20,642	- 709	- 261	3,088	17,554
Total	152,593	156,092	152,576	- 3,516	- 17	25,599	126,977
All Persons							
Border, Midland and Western	131,977	132,213	129,451	- 2,762	- 2,526	20,741	108,710
Border	60,685	59,840	58,508	- 1,332	- 2,177	9,596	48,912
Midland	32,731	33,355	32,799	- 556	+ 68	5,511	27,288
West	38,561	39,018	38,144	- 874	- 417	5,634	32,510
Southern and Eastern	298,024	292,875	288,142	- 4,733	- 9,882	44,219	243,923
Dublin	103,470	101,997	100,633	- 1,364	- 2,837	16,072	84,561
Mid-East	41,877	41,322	40,698	- 624	- 1,179	6,089	34,609
Mid-West	37,207	36,168	35,425	- 743	- 1,782	5,569	29,856
South-East	56,520	55,914	55,099	- 815	- 1,421	8,849	46,250
South-West	58,950	57,474	56,287	- 1,187	- 2,663	7,640	48,647
Total	430,001	425,088	417,593	- 7,495	- 12,408	64,960	352,633

¹ The composition of the regions is described in the Background Notes.

See StatBank Table LRM04.

Table 6 Persons on the Live Register classified by last held occupation

Broad occupational group	April 2012	March 2013	April 2013	Monthly change	Annual change	Under 25 years	25 years & over
Males							
Managers and administrators	10,116	10,082	10,023	- 59	- 93	356	9,667
Professional	11,067	11,017	10,766	- 251	- 301	829	9,937
Associate professional and technical	6,910	6,868	6,748	- 120	- 162	840	5,908
Clerical and secretarial	11,345	11,253	10,943	- 310	- 402	1,440	9,503
Craft and related	96,224	88,220	86,704	- 1,516	- 9,520	8,364	78,340
Personal and protective service	18,358	18,513	17,989	- 524	- 369	2,611	15,378
Sales	17,936	17,955	17,816	- 139	- 120	5,278	12,538
Plant and machine operatives	54,631	54,011	53,624	- 387	- 1,007	6,849	46,775
Other occupation	39,323	38,577	37,993	- 584	- 1,330	7,182	30,811
No occupation ¹	11,498	12,500	12,411	- 89	+ 913	5,612	6,799
Total	277,408	268,996	265,017	- 3,979	- 12,391	39,361	225,656
Females							
Managers and administrators	6,634	7,356	7,293	- 63	+ 659	191	7,102
Professional	12,250	12,963	12,566	- 397	+ 316	878	11,688
Associate professional and technical	5,179	5,279	5,088	- 191	- 91	456	4,632
Clerical and secretarial	29,633	29,664	28,366	- 1,298	- 1,267	1,749	26,617
Craft and related	7,402	7,513	7,401	- 112	- 1	1,055	6,346
Personal and protective service	32,376	33,036	32,035	- 1,001	- 341	6,062	25,973
Sales	28,304	27,792	27,494	- 298	- 810	6,629	20,865
Plant and machine operatives	15,207	15,659	15,698	+ 39	+ 491	2,401	13,297
Other occupation	9,200	9,534	9,448	- 86	+ 248	2,718	6,730
No occupation ¹	6,408	7,296	7,187	- 109	+ 779	3,460	3,727
Total	152,593	156,092	152,576	- 3,516	- 17	25,599	126,977
All Persons							
Managers and administrators	16,750	17,438	17,316	- 122	+ 566	547	16,769
Professional	23,317	23,980	23,332	- 648	+ 15	1,707	21,625
Associate professional and technical	12,089	12,147	11,836	- 311	- 253	1,296	10,540
Clerical and secretarial	40,978	40,917	39,309	- 1,608	- 1,669	3,189	36,120
Craft and related	103,626	95,733	94,105	- 1,628	- 9,521	9,419	84,686
Personal and protective service	50,734	51,549	50,024	- 1,525	- 710	8,673	41,351
Sales	46,240	45,747	45,310	- 437	- 930	11,907	33,403
Plant and machine operatives	69,838	69,670	69,322	- 348	- 516	9,250	60,072
Other occupation	48,523	48,111	47,441	- 670	- 1,082	9,900	37,541
No occupation ¹	17,906	19,796	19,598	- 198	+ 1,692	9,072	10,526
Total	430,001	425,088	417,593	- 7,495	- 12,408	64,960	352,633

¹ Includes those who never worked and those who have no stated occupation.

See StatBank Table LRM13.

Table 7 Persons on the Live Register classified by duration of continuous registration

Duration	April 2012	March 2013	April 2013	Monthly change	Annual change	Under 25 years	25 years & over
Males							
Less than one year	144,995	137,071	134,463	- 2,608	- 10,532	24,558	109,905
One year or more	132,413	131,925	130,554	- 1,371	- 1,859	14,803	115,751
Total	277,408	268,996	265,017	- 3,979	- 12,391	39,361	225,656
Females							
Less than one year	100,953	100,121	97,067	- 3,054	- 3,886	17,921	79,146
One year or more	51,640	55,971	55,509	- 462	+ 3,869	7,678	47,831
Total	152,593	156,092	152,576	- 3,516	- 17	25,599	126,977
All Persons							
Less than one year	245,948	237,192	231,530	- 5,662	- 14,418	42,479	189,051
One year or more	184,053	187,896	186,063	- 1,833	+ 2,010	22,481	163,582
Total	430,001	425,088	417,593	- 7,495	- 12,408	64,960	352,633

See StatBank Table LRM11.

Table 8 Casual and part-time workers on the Live Register

		Males	Monthly change	Females	Monthly change	All Persons	Monthly change	
2011	April	45,447	- 156	40,147	- 405	85,594	- 561	
	May	45,071	- 376	39,862	- 285	84,933	- 661	
	June	45,609	+ 538	40,156	+ 294	85,765	+ 832	
	July	45,639	+ 30	40,226	+ 70	85,865	+ 100	
	August	45,312	- 327	39,984	- 242	85,296	- 569	
	September	44,731	- 581	39,286	- 698	84,017	- 1,279	
	October	45,234	+ 503	39,795	+ 509	85,029	+ 1,012	
	November	45,914	+ 680	40,698	+ 903	86,612	+ 1,583	
	December	46,044	+ 130	40,771	+ 73	86,815	+ 203	
	2012	January	46,256	+ 212	40,773	+ 2	87,029	+ 214
		February	47,038	+ 782	41,176	+ 403	88,214	+ 1,185
		March	47,539	+ 501	41,177	+ 1	88,716	+ 502
April		47,614	+ 75	40,828	- 349	88,442	- 274	
May		47,626	+ 12	40,438	- 390	88,064	- 378	
June		47,891	+ 265	40,574	+ 136	88,465	+ 401	
July		47,797	- 94	40,244	- 330	88,041	- 424	
August		47,569	- 228	39,585	- 659	87,154	- 887	
September		46,643	- 926	38,447	- 1,138	85,090	- 2,064	
October		46,829	+ 186	38,834	+ 387	85,663	+ 573	
November		47,695	+ 866	39,786	+ 952	87,481	+ 1,818	
December		48,082	+ 387	39,987	+ 201	88,069	+ 588	
2013	January	47,829	- 253	40,095	+ 108	87,924	- 145	
	February	48,870	+ 1,041	40,910	+ 815	89,780	+ 1,856	
	March	48,961	+ 91	40,837	- 73	89,798	+ 18	
	April	48,527	- 434	40,382	- 455	88,909	- 889	

See StatBank Table LRM10.

Table 9 Persons on the Live Register classified by nationality grouping

		Nationality grouping						All Persons
		Non-Irish nationals				Non-Irish nationals	Irish nationals	
		United Kingdom	EU15 excl. Irl. & UK	EU15 to EU27 States	Other			
2011	April	18,021	3,729	42,698	13,075	77,523	362,048	439,571
	May	18,075	3,711	41,791	13,401	76,978	363,969	440,947
	June	18,648	3,829	42,013	14,431	78,921	379,027	457,948
	July	19,006	3,872	41,732	14,675	79,285	390,999	470,284
	August	18,925	3,847	41,330	14,893	78,995	390,718	469,713
	September	17,894	3,586	40,000	13,941	75,421	362,020	437,441
	October	17,708	3,545	40,202	13,582	75,037	355,395	430,432
	November	17,648	3,571	40,788	13,512	75,519	354,048	429,567
	December	17,798	3,605	41,263	13,554	76,220	358,564	434,784
2012	January	17,827	3,648	42,831	13,845	78,151	361,438	439,589
	February	17,783	3,685	43,341	13,946	78,755	360,667	439,422
	March	17,521	3,608	43,025	13,926	78,080	355,974	434,054
	April	17,337	3,558	42,268	13,852	77,015	352,986	430,001
	May	17,447	3,551	41,634	14,151	76,783	356,124	432,907
	June	18,054	3,770	41,360	15,072	78,256	373,718	451,974
	July	18,290	3,756	41,167	15,209	78,422	381,901	460,323
	August	18,143	3,700	40,629	15,277	77,749	378,507	456,256
	September	17,135	3,525	39,335	14,324	74,319	355,016	429,335
	October	16,767	3,477	39,347	13,906	73,497	346,675	420,172
	November	16,695	3,530	39,935	13,588	73,748	343,529	417,277
	December	16,806	3,575	40,491	13,667	74,539	349,194	423,733
2013	January	16,934	3,743	42,004	13,761	76,442	352,954	429,396
	February	16,799	3,853	42,561	13,616	76,829	352,047	428,876
	March	16,555	3,851	42,246	13,194	75,846	349,242	425,088
	April	16,180	3,683	41,635	12,864	74,362	343,231	417,593

See StatBank Table LRM09.

Table 10 Live Register Compositional Analysis

	April 2010		April 2011		April 2012		April 2013	
	Number	% of total	Number	% of total	Number	% of total	Number	% of total
Sex								
Males	287,828	66.5	286,745	65.2	277,408	64.5	265,017	63.5
Females	144,829	33.5	152,826	34.8	152,593	35.5	152,576	36.5
Total	432,657	100.0	439,571	100.0	430,001	100.0	417,593	100.0
Age								
Under 25 years	82,998	19.2	79,416	18.1	70,921	16.5	64,960	15.6
25 years and over	349,659	80.8	360,155	81.9	359,080	83.5	352,633	84.4
Total	432,657	100.0	439,571	100.0	430,001	100.0	417,593	100.0
Scheme								
JB Claims	148,660	34.4	117,488	26.7	96,212	22.4	79,736	19.1
JA Applications	261,460	60.4	293,203	66.7	301,164	70.0	303,770	72.7
Other Registrants	22,537	5.2	28,880	6.6	32,625	7.6	34,087	8.2
Total	432,657	100.0	439,571	100.0	430,001	100.0	417,593	100.0
Duration of Continuous Registration								
Less than one year	315,266	72.9	270,151	61.5	245,948	57.2	231,530	55.4
One year or more	117,391	27.1	169,420	38.5	184,053	42.8	186,063	44.6
Total	432,657	100.0	439,571	100.0	430,001	100.0	417,593	100.0
Nationality Grouping								
Irish Nationals	354,266	81.9	362,048	82.4	352,986	82.1	343,231	82.2
Non-Irish Nationals	78,391	18.1	77,523	17.6	77,015	17.9	74,362	17.8
Total	432,657	100.0	439,571	100.0	430,001	100.0	417,593	100.0
NUTS2 Regions¹								
Border, Midland and Western	131,954	30.5	135,489	30.8	131,977	30.7	129,451	31.0
Southern and Eastern	300,703	69.5	304,082	69.2	298,024	69.3	288,142	69.0
Total	432,657	100.0	439,571	100.0	430,001	100.0	417,593	100.0
Last Held Occupation								
Managers and administrators	17,837	4.1	16,746	3.8	16,750	3.9	17,316	4.1
Professional	23,999	5.5	24,087	5.5	23,317	5.4	23,332	5.6
Associate professional and technical	12,822	3.0	12,687	2.9	12,089	2.8	11,836	2.8
Clerical and secretarial	43,003	9.9	43,315	9.9	40,978	9.5	39,309	9.4
Craft and related	117,979	27.3	112,206	25.5	103,626	24.1	94,105	22.5
Personal and protective service	46,552	10.8	50,436	11.5	50,734	11.8	50,024	12.0
Sales	42,896	9.9	45,443	10.3	46,240	10.8	45,310	10.9
Plant and machine operatives	69,650	16.1	69,955	15.9	69,838	16.2	69,322	16.6
Other occupation	45,459	10.5	49,286	11.2	48,523	11.3	47,441	11.4
No occupation ²	12,460	2.9	15,410	3.5	17,906	4.2	19,598	4.7
Total	432,657	100.0	439,571	100.0	430,001	100.0	417,593	100.0
Casual Status								
No casual and part-time work	353,548	81.7	353,977	80.5	341,559	79.4	328,684	78.7
Casual and part-time work	79,109	18.3	85,594	19.5	88,442	20.6	88,909	21.3
Total	432,657	100.0	439,571	100.0	430,001	100.0	417,593	100.0

¹ The composition of the regions is described in the Background Notes.² Includes those who never worked and those who have no stated occupation.

Annex - Activation Programmes

The table below contains the end of March 2013 data on the number of people availing of a range of programmes targeted primarily at the long-term unemployed (over 12 months) and other welfare recipients, including Lone Parents.

There were 85,369 people availing of these programmes in March 2013, which is an increase of 3,929 (+4.8%) from the previous year, when there were 81,440 people in activation programmes.

Persons on activation programmes are not counted as part of the monthly Live Register.

Live Register Activation Programmes

	March 2012	February 2013	March 2013
Back to Work Schemes			
Back to Work allowance scheme - Employee strand ¹	102	13	13
Back to Work Enterprise allowance scheme -self employed strand	10,978	10,747	10,650
Short-term Enterprise Allowance ²	1,167	988	986
Total Back to Work payments	12,247	11,748	11,649
Other Activation Programmes			
DSP Part-time Job Incentive	190	215	215
TUS - Community Work Placement Initiative (2011)	3,201	4,601	4,839
JobBridge (2011) ³	4,291	5,832	5,948
Total Other Activation Programmes	7,682	10,648	11,002
Community Employment Schemes (excluding Supervisors)	21,812	21,075	21,172
FAS Full Time Training for Unemployed People⁴	9,535	9,379	9,250
Back to Education Courses			
Vocational Training Opportunities Scheme (VTOS) ⁵	N/A	N/A	N/A
Back to Education Allowance (BTEA) ⁶	25,164	25,571	27,296
Total Back to Education Courses	30,164	30,571	32,296
Total Activation Programmes	81,440	83,421	85,369

¹ This scheme was closed to new applications from 1st May 2009.

² This scheme was introduced from 1st May 2009. It provides immediate support for someone in receipt of Jobseekers Benefit who wants to start a business.

³ Contains revised figures for February 2012.

⁴ Specific Skills Training/Local Training initiative/Traineeship/Return to Work. Breakdown became available for April 2012 Live Register release.

⁵ VTOS figures are estimated at 5,000 each year.

⁶ BTEA figures include all schemes but participants from JA & JB are not entitled to BTEA during the summer holidays. Includes MOMENTUM participants from February 2013.

Background Notes

Source and scope of the Live Register The Live Register is compiled from returns made for each local office to the Central Statistics Office by the Department of Social Protection. It comprises of persons under 65 years of age in the following classes:

- ◆ All Claimants for Jobseekers Benefit (JB) excluding systematic short-time workers
- ◆ Applicants for Jobseekers Allowance (JA) excluding smallholders/farm assists and other self-employed persons
- ◆ Other registrants including applicants for credited Social Welfare contributions but excluding those directly involved in an industrial dispute.

Reference Period The reference periods for the Live Register results are as follows:
 April 2013 – 30th March to 26th April 2013
 April 2012 – 31st March to 27th April 2012

Unemployment statistics The Live Register is not designed to measure unemployment. It includes part-time (those who work up to three days a week), seasonal and casual workers entitled to Jobseekers Allowance and or Jobseekers Benefit. **Unemployment is measured by the Quarterly National Household Survey** (formerly the Annual Labour Force Survey).

Standardised unemployment rates The Standardised Unemployment Rate (SUR) series in Table 3 is based on the estimated number of persons unemployed expressed as a percentage of the total economically active population (i.e. the Labour Force), using internationally comparable definitions of employment and unemployment, as recommended by the International Labour Office.

Official estimates of the number of persons unemployed and the unemployment rate are produced from the Quarterly National Household Survey (QNHS). The QNHS is the only source of information on unemployment and employment which can apply standard International Labour Organisation (ILO) methodology to the estimation of these key indicators. The background notes of the QNHS release contain more information on the ILO criteria. Given the timelag required to produce estimates from the QNHS and the quarterly periodicity, short-term trends in the Live Register are used to estimate more up-to-date monthly unemployment rates.

The seasonally adjusted QNHS estimate of unemployment is used as a benchmark for February (Quarter 1 QNHS), May (Quarter 2 QNHS), August (Quarter 3 QNHS) and November (Quarter 4 QNHS) each year. The latest QNHS benchmark is updated using the trend in the seasonally adjusted Live Register to allow the estimation of the SUR. Once new QNHS data is available it is used to revise the SUR series. The assumption underlying this methodology is that over short periods the change in the seasonally adjusted Live Register will represent accurately the change in unemployment which will be seen from the QNHS. This methodology has been used since the QNHS was first initiated at the end of 1997.

QNHS The Quarterly National Household Survey (QNHS), which began in September 1997, replaced the Labour Force Survey and provides quarterly estimates of the unemployment rate. Up to and including the fourth quarter of 2008 the QNHS operated on a seasonal quarter basis. As of the first quarter 2009 the QNHS is now undertaken on a calendar quarter basis.

The calendar reference quarters for survey results are:

Q1 - January to March, Q2 - April to June, Q3 - July to September and Q4 - October to December.

The calendar quarter estimates for Q4 2012 (adjusted for seasonality) are:

	Q1	Q2	Q3	Q4
	%	%	%	%
2007	4.5	4.7	4.6	4.9
2008	5.0	5.7	6.9	8.1
2009	10.2	12.1	12.6	13.0
2010	13.0	13.8	13.9	14.7
2011	14.3	14.5	14.8	14.9
2012	15.0	14.9	14.6	14.2

Seasonal adjustment Since January 2011 the seasonal adjustment of the Live Register is completed by applying the X-12-ARIMA model, developed by the U.S. Census Bureau. Seasonal adjustment is conducted using the indirect approach, where each individual series is independently adjusted (male under 25 years, female under 25 years, male 25 years and over and female 25 years and over). To preserve consistency between the individual and aggregate series, the series for gender, age group and total Live Register are then created from these four component series.

The X-12 ARIMA method has the X-11 moving averages process at its core, but builds on this by providing options for pre-treating the series using a regARIMA approach for prior adjustment and series extension. In essence this methodology will estimate seasonal factors while taking account of temporary changes, outliers, level shifts and calendar effects (e.g timing of Easter).

All Live Register series are updated monthly with the latest three years of seasonally adjusted data as part of the concurrent approach. The comprehensive annual review contains revisions to the entire series. Revisions to the series are typically very minor in scale.

For additional information on the use of X-12-ARIMA see detailed note in the January 2011 Live Register release.

Jobseeker's Benefit Duration Prior to 19 January 2004 Jobseeker's Benefit was payable for **15 months** (390 days).

From 19 January 2004, Jobseeker's Benefit could be paid for a maximum of 15 months (390 days) to people who had at least 260 paid PRSI contributions. Jobseeker's Benefit could be paid for a maximum of 12 months (312 days) to people who had less than 260 paid contributions (Refers to new claim).

From 15 October 2008, Jobseeker's Benefit could be paid for a maximum of 12 months (312 days) to people who had at least 260 paid PRSI contributions. Jobseeker's Benefit could be paid for a maximum of 9 months (234 days) to people who had less than 260 paid contributions.

As of 3 April 2013, Jobseeker's Benefit can be paid for a maximum of **9 months** (234 days) to people who have 260 paid PRSI contributions. Jobseekers Benefit can be paid for a maximum of **6 months** (156 days) to people who have less than 260 paid contributions (Refers to new claims).

Claimants getting Jobseekers Benefit for 6 months or more on 3 April 2013 (or 3 months for people with fewer than 260 contributions) will not be affected.

Live Register Flows Live Register flows data is sourced from information collected by the Department of Social Protection. The aggregate of new registrations for each month is used in conjunction with the net change over the same period to calculate the outflow from the register. A new registration is defined as anybody on the Live Register in a particular month who was not on it the previous month. Inflows and outflows published in this release do not take account of inter-scheme activity within the Live Register. For example, if a claimant exhausts his/her entitlement to JB and opens a new JA claim this is counted as an outflow in JB and an inflow in JA.

Live Register Area Analysis The basis of the area analysis in Live Register statistics is the Department of Social Protection local office of registration. The areas served by Local Employment Offices do not correspond to specific geographic boundaries. Therefore, registrants at a given local office do not necessarily come from a particular region or area which can be precisely delineated e.g. data for the Cork City Local Office of Registration refers to all persons signing on in Cork City but may include persons not resident in Cork City. **The latest available Live Register data by Province, County and Local Office of Registration will be released on the CSO website through the CSO Main Data Dissemination Service, StatBank one day after the publication of this release.**

NUTS2 and NUTS3 regions The Regional classifications are based on the NUTS (Nomenclature of Territorial Units) classification used by Eurostat. The NUTS3 regions correspond to the eight Regional Authorities established under the Local Government Act, 1991 (Regional Authorities) (Establishment) Order, 1993, which came into operation on 1 January 1994. The NUTS2 regions, which were proposed by Government and agreed by Eurostat in 1999, are groupings of the NUTS3 regions.

Border, Midland and Western NUTS2 Region

Border	Cavan Donegal Leitrim Louth Monaghan Sligo
Midland	Laois Longford Offaly Westmeath
West	Galway City Galway County Mayo Roscommon

Southern and Eastern NUTS2 Region

Dublin	Dublin City Dun Laoghaire-Rathdown Fingal South Dublin
Mid-East	Kildare Meath Wicklow
Mid-West	Clare Limerick City Limerick County North Tipperary
South-East	Carlow Kilkenny South Tipperary Waterford City Waterford County Wexford
South-West	Cork City Cork County Kerry

Occupations Live Register occupational data is sourced from information collected by the Department of Social Protection on the most recent occupation of claimants when they sign on the Live Register. The classification used is based on the UK Standard Occupational Classification (SOC). “No occupation” is an additional category and includes those who have never worked and those who have no stated occupation.

Age by Duration Analysis Detailed tables relating to regional and scheme data are available on the CSO website through the CSO Main Data Dissemination Service, StatBank on a bi-annual basis, at the following link:

<http://cso.ie/shorturl.aspx/142>

Casual and part-time workers The casual and part-time workers’ figure is based on data supplied by the Department of Social Protection. People may apply for Jobseeker’s Benefit or Jobseeker’s Allowance if they only work for part of a week and be included on the Live Register.

Nationality Data in the nationality grouping table is sourced from information collected by the Department of Social Protection on the nationality of claimants when they first sign on the Live Register.

CSO StatBank More detailed information on geographic breakdowns of the Live Register and duration of continuous registration along with all Live Register published data can be found on the CSO Main Data Dissemination Service, StatBank on the CSO website at the link:

<http://cso.ie/shorturl.aspx/39>

For further information or assistance use the contact details on the front page of the release or e-mail labour@cso.ie