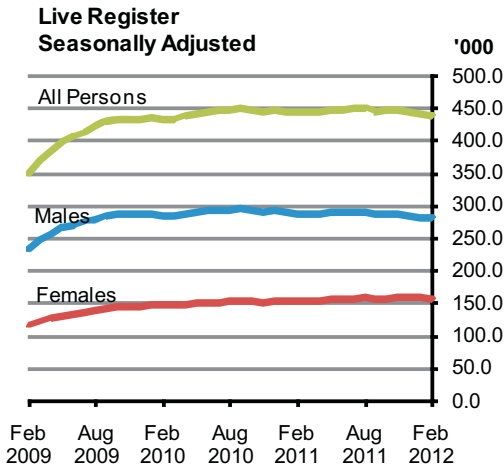




Live Register February 2012



	Live Register Total	Seasonally Adjusted	Standardised Unemployment Rate (SUR)%
February 2011	444,299	441,800	13.9
January 2012	439,589	440,100	14.2
February 2012	439,422	438,300	14.2
			Percentage Points
Change in month	-	- 1,800	0.0
Change in year	- 4,877	-	+0.3

Standardised unemployment rate remains unchanged at 14.2% in February

The standardised unemployment rate (SUR) in February 2012 was 14.2%, unchanged from January 2012. The latest seasonally adjusted unemployment rate from the Quarterly National Household Survey was 14.4% in the third quarter of 2011. *See table 3.*

On a seasonally adjusted basis there was a decrease of 1,800 (-0.4%) on the Live Register in the month to February 2012 bringing the seasonally adjusted total to 438,300.

In unadjusted terms there were 439,422 people signing on the Live Register in February 2012. This represents a decrease of 4,877 (-1.1%) over the year. *See table 1a.*

Other features include:

- ◆ On a seasonally adjusted basis the Live Register showed monthly decreases of 1,100 males and 600 females in February 2012. *See table 2a.*
- ◆ The number of male claimants decreased by 8,356 (-2.9%) to 283,450 over the year, while female claimants increased by 3,479 (+2.3%) to 155,972. This compares with increases of 939 (+0.3%) and 6,404 (+4.4%) for males and females respectively in the year to February 2011. *See table 1a.*

The Live Register is not designed to measure unemployment. It includes part-time workers (those who work up to three days a week), seasonal and casual workers entitled to Jobseeker's Benefit or Allowance. Unemployment is measured by the Quarterly National Household Survey and the latest estimated number of persons unemployed as of the third quarter of 2011 was 314,700.

For more information contact Sabrina Bowen at 021 453 5151, Karen Desmond at 021 453 5534 or Brendan Curtin at 021 453 5577.

Published by the Central Statistics Office, Ireland.

Ardee Road Dublin 6 Ireland
Skehard Road Cork Ireland

LoCall: 1890 313 414 (ROI)
0808 2347 581 (UK/NI)

Tel: +353 1 498 4000
Fax: +353 1 498 4229

Tel: +353 21 453 5000
Fax: +353 21 453 5492

Both offices may be contacted through any of these telephone numbers.

CSO on the Web: www.cso.ie
and go to

Labour Market and Earnings: Labour Market

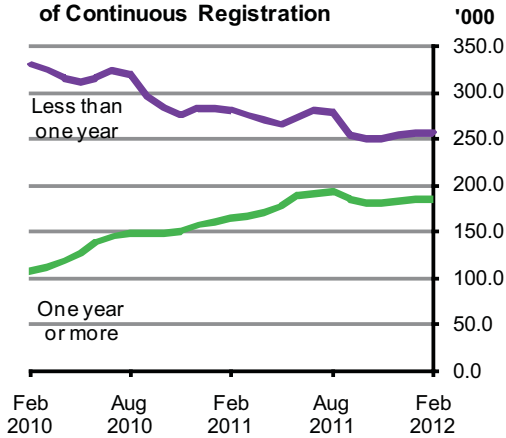
Director General: Gerard O'Hanlon

Enquiries:

Live Register statistics
General queries

Live Register Section, ext 5491
Email labour@cso.ie
Information Section, ext 5021
Email information@cso.ie

Live Register classified by Duration of Continuous Registration



Live Register duration of continuous registration

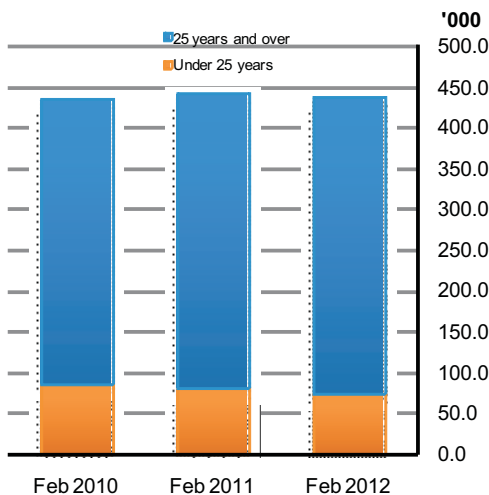
The number of long term claimants on the Live Register in February 2012 was 184,555. The number of male long term claimants increased by 12,531 (+10.4%) in the year to February 2012, while the comparable increase for females was 8,199 (+19.0%) giving an overall annual increase of 20,730 (+12.7%) in the number of long term claimants. *See table 7 and graph opposite.*

In February 58.0% (254,867) of all claimants on the Live Register were short term claimants. The comparable figure for February 2011 was 63.1% (280,474). The annual fall of 25,607 (-9.1%) in the number of short term claimants consisted of a decrease of 20,887 (-12.2%) in the number of male short term claimants and a decrease of 4,720 (-4.3%) in female short term claimants.

Live Register casual and part-time workers

There were 88,214 casual and part-time workers on the Live Register in February, which represents 20.1% of the total Live Register. This compares with 19.1% one year earlier when there were 85,059 casual and part-time workers on the Live Register. In the year to February 2012 the number of casual and part-time workers increased by 3,155 (+3.7%), with the number of males increasing by 1,952 (+4.3%) and the number of females increasing by 1,203 (+3.0%). *See table 8.*

Live Register classified by Age Group



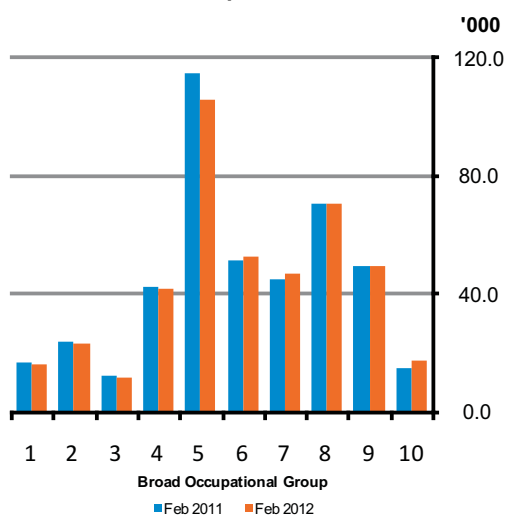
Live Register age groups

In the year to February 2012 the number of persons aged 25 and over on the Live Register increased by 2,254 (+0.6%), while the number of persons aged under 25 fell by 7,131 (-8.7%). This continues the pattern seen over the last two years whereby there has been a general downward trend in the number of persons aged under 25 on the Live Register, while the rate of increase in the number of persons aged over 25 has been slowing. This has led to the percentage of persons aged under 25 on the Live Register falling to 17.1% in February 2012 from 19.5% two years earlier. *See tables 1b and 1c and graph opposite.*

Live Register new registrants

There were 36,102 new registrants on the Live Register in February 2012, consisting of 16,950 JB claims, 17,389 JA claims and 1,763 'Other Registrants'. Males accounted for 20,453 (56.7%) and females 15,649 (43.3%) of all new registrants. On average 5,113 male and 3,912 female new registrants joined the Live Register each week of the month. The difference between the number of new registrants on the Live Register and the change in the total number on the Live Register is accounted for by closed claims and movements between schemes. *See table 4.*

Live Register classified by Last Held Occupation



KEY

- 1- Managers and administrators
- 2- Professional
- 3- Associate professional and technical
- 4- Clerical and secretarial
- 5- Craft and related
- 6- Personal and protective service
- 7- Sales
- 8- Plant and machine operatives
- 9- Other occupation
- 10- No occupation

Live Register by other classifications

Bearing in mind the overall annual decrease of 1.1% in the number of people on the Live Register the main other points which can be noted include:

- ◆ An annual increase of 4.4% brought the total number of Jobseeker's Allowance (JA) claimants to 304,683 in February 2012, while Jobseeker's Benefit (JB) claimants decreased to 103,254 (-17.1%) over the same period. As a result JA claimants account for 69.3% of all persons on the Live Register in February 2012 compared with 65.7% a year earlier. *See table 1a.*
- ◆ Across the eight NUTS 3 regions relatively small changes were recorded in the year to February 2012. Annual decreases occurred in seven regions with the largest percentage decrease in the West region (-2.8%), while the only increase was seen in the South-East region (+0.4%) *See table 5.*
- ◆ *Craft and related* (24.2%) remained the largest occupational group on the Live Register in February, despite the fact that the number in the group fell over the year by 8,681 (-7.6%) to 106,234. The second largest annual percentage decrease was in the *Associate, professional and technical* group (-5.2%). In the year to February 2012 three occupational groups showed Live Register increases. The largest percentage increases were in the *Sales* group (+3.9%) and the *Personal and protective service* group (+2.1%)¹. *See table 6 and graph opposite.*
- ◆ In February Irish nationals accounted for 82.1% (360,667) of the number of persons on the Live Register, which was similar to the proportion recorded one year earlier. *See table 9.*

¹ While the 'No Occupation' group is excluded from the analysis its subtotals are included in the relevant calculations presented in the text.

Table 1a Total persons on the Live Register

Category	February 2011	January 2012	February 2012	Monthly change		Annual change
Males						
JB Claims	69,409	55,964	55,317	-	647	- 14,092
JA Applications	212,334	216,706	216,743	+	37	+ 4,409
Other Registrants	10,063	11,223	11,390	+	167	+ 1,327
Total	291,806	283,893	283,450	-	443	- 8,356
Females						
JB Claims	55,183	48,369	47,937	-	432	- 7,246
JA Applications	79,399	87,494	87,940	+	446	+ 8,541
Other Registrants	17,911	19,833	20,095	+	262	+ 2,184
Total	152,493	155,696	155,972	+	276	+ 3,479
All Persons						
JB Claims	124,592	104,333	103,254	-	1,079	- 21,338
JA Applications	291,733	304,200	304,683	+	483	+ 12,950
Other Registrants	27,974	31,056	31,485	+	429	+ 3,511
Total	444,299	439,589	439,422	-	167	- 4,877

Table 1b Persons under 25 years of age on the Live Register

Category	February 2011	January 2012	February 2012	Monthly change		Annual change
Males						
JB Claims	6,723	4,442	4,399	-	43	- 2,324
JA Applications	44,972	41,961	41,702	-	259	- 3,270
Other Registrants	156	102	110	+	8	- 46
Total	51,851	46,505	46,211	-	294	- 5,640
Females						
JB Claims	5,535	4,064	4,051	-	13	- 1,484
JA Applications	24,424	24,555	24,436	-	119	+ 12
Other Registrants	257	221	238	+	17	- 19
Total	30,216	28,840	28,725	-	115	- 1,491
All Persons						
JB Claims	12,258	8,506	8,450	-	56	- 3,808
JA Applications	69,396	66,516	66,138	-	378	- 3,258
Other Registrants	413	323	348	+	25	- 65
Total	82,067	75,345	74,936	-	409	- 7,131

Table 1c Persons 25 years of age and over on the Live Register

Category	February 2011	January 2012	February 2012	Monthly change		Annual change
Males						
JB Claims	62,686	51,522	50,918	-	604	- 11,768
JA Applications	167,362	174,745	175,041	+	296	+ 7,679
Other Registrants	9,907	11,121	11,280	+	159	+ 1,373
Total	239,955	237,388	237,239	-	149	- 2,716
Females						
JB Claims	49,648	44,305	43,886	-	419	- 5,762
JA Applications	54,975	62,939	63,504	+	565	+ 8,529
Other Registrants	17,654	19,612	19,857	+	245	+ 2,203
Total	122,277	126,856	127,247	+	391	+ 4,970
All Persons						
JB Claims	112,334	95,827	94,804	-	1,023	- 17,530
JA Applications	222,337	237,684	238,545	+	861	+ 16,208
Other Registrants	27,561	30,733	31,137	+	404	+ 3,576
Total	362,232	364,244	364,486	+	242	+ 2,254

Table 2a Total persons on the Live Register - Unadjusted and Seasonally Adjusted

	Month	Unadjusted Series			Seasonally Adjusted Series ¹		
		Males	Females	All Persons	Males	Females	All Persons
2010	February	290,900	146,100	437,000	284,700	147,700	432,300
	March	290,200	144,900	435,100	285,100	146,900	432,000
	April	287,800	144,800	432,700	288,000	149,200	437,200
	May	290,400	147,500	437,900	290,800	150,600	441,500
	June	297,100	155,800	452,900	291,300	150,600	441,900
	July	300,500	166,400	466,800	293,000	152,000	445,000
	August	300,000	167,000	466,900	293,600	153,400	447,000
	September	289,800	152,600	442,400	295,400	153,600	449,000
	October	281,600	148,000	429,600	293,100	153,200	446,400
	November	280,200	144,800	425,000	291,000	152,100	443,200
	December	288,800	148,300	437,100	292,700	153,200	445,900
	2011	January	292,000	150,700	442,700	288,600	153,600
February		291,800	152,500	444,300	287,400	154,400	441,800
March		290,200	151,000	441,200	287,700	155,100	442,900
April		286,700	152,800	439,600	286,700	155,400	442,100
May		288,300	152,700	440,900	288,800	155,900	444,700
June		296,100	161,800	457,900	290,200	156,900	447,100
July		297,800	172,500	470,300	289,900	157,900	447,800
August		296,900	172,900	469,700	289,600	158,900	448,500
September		282,000	155,500	437,400	287,000	156,600	443,600
October		277,600	152,800	430,400	287,700	158,100	445,800
November		276,500	153,000	429,600	286,300	160,000	446,300
December		279,700	155,100	434,800	283,200	159,700	442,900
2012	January	283,900	155,700	439,600	281,300	158,700	440,100
	February	283,500	156,000	439,400	280,200	158,100	438,300

¹ Table contains revised figures.**Table 2b Persons under 25 years of age on the Live Register - Unadjusted and Seasonally Adjusted**

	Month	Unadjusted Series			Seasonally Adjusted Series ¹		
		Males	Females	All Persons	Males	Females	All Persons
2010	February	54,600	30,500	85,100	54,200	31,400	85,600
	March	54,900	30,100	85,000	54,400	31,200	85,600
	April	53,400	29,600	83,000	54,400	31,700	86,100
	May	54,400	31,200	85,600	55,100	32,100	87,200
	June	57,500	34,100	91,600	55,200	31,700	86,900
	July	58,600	36,000	94,600	55,300	31,700	87,000
	August	58,300	36,300	94,600	55,200	31,900	87,100
	September	55,200	33,500	88,700	55,500	32,400	87,800
	October	52,000	30,900	82,900	54,500	31,900	86,400
	November	51,000	29,500	80,500	53,700	31,700	85,400
	December	52,100	29,200	81,300	53,600	31,600	85,200
	2011	January	52,200	30,000	82,200	52,600	31,400
February		51,900	30,200	82,100	51,900	31,300	83,100
March		51,500	29,800	81,400	51,500	31,300	82,800
April		49,900	29,500	79,400	51,200	31,300	82,500
May		50,400	30,500	81,000	51,100	31,400	82,500
June		53,300	33,700	87,000	51,100	31,300	82,400
July		53,900	35,400	89,300	50,700	31,300	81,900
August		53,300	35,500	88,800	50,200	31,200	81,400
September		49,200	31,700	80,900	49,300	30,600	80,000
October		47,400	30,300	77,700	49,400	31,100	80,500
November		46,200	29,400	75,600	48,500	31,400	79,800
December		45,900	28,500	74,300	47,200	30,700	78,000
2012	January	46,500	28,800	75,300	46,900	30,200	77,100
	February	46,200	28,700	74,900	46,400	29,800	76,300

¹ Table contains revised figures.

Table 2c Persons 25 years of age and over on the Live Register - Unadjusted and Seasonally Adjusted

	Month	Unadjusted Series			Seasonally Adjusted Series ¹		
		Males	Females	All Persons	Males	Females	All Persons
2010	February	236,300	115,600	351,800	230,500	116,300	346,700
	March	235,300	114,800	350,100	230,700	115,700	346,400
	April	234,400	115,200	349,700	233,500	117,500	351,100
	May	235,900	116,400	352,300	235,800	118,500	354,300
	June	239,500	121,700	361,200	236,100	119,000	355,100
	July	241,800	130,400	372,200	237,700	120,300	358,000
	August	241,700	130,700	372,400	238,400	121,500	360,000
	September	234,600	119,100	353,800	240,000	121,200	361,200
	October	229,600	117,100	346,600	238,700	121,400	360,000
	November	229,200	115,300	344,500	237,300	120,500	357,800
	December	236,700	119,100	355,800	239,000	121,700	360,700
	2011	January	239,800	120,700	360,400	236,000	122,300
February		240,000	122,300	362,200	235,600	123,100	358,600
March		238,700	121,100	359,800	236,300	123,800	360,100
April		236,800	123,400	360,200	235,500	124,200	359,700
May		237,900	122,100	360,000	237,700	124,500	362,200
June		242,800	128,100	370,900	239,100	125,600	364,700
July		243,800	137,100	381,000	239,200	126,600	365,900
August		243,600	137,400	380,900	239,400	127,700	367,100
September		232,800	123,700	356,600	237,700	125,900	363,600
October		230,200	122,500	352,700	238,400	127,000	365,300
November		230,300	123,700	354,000	237,800	128,600	366,500
December		233,800	126,600	360,400	236,000	129,000	365,000
2012	January	237,400	126,900	364,200	234,400	128,500	362,900
	February	237,200	127,200	364,500	233,800	128,200	362,000

¹ Table contains revised figures.

Table 3 Seasonally Adjusted Standardised Unemployment Rates (SUR)¹

Month	2007	2008	2009	2010	2011	2012
	%	%	%	%	%	%
January	4.4	4.8	9.4	13.0	14.3	14.2
February ²	4.4	4.8	10.1	12.8	13.9	14.2
March	4.4	5.2	10.8	12.9	14.0	
April	4.5	5.3	11.3	13.2	14.0	
May ²	4.6	5.6	11.8	13.5	14.2	
June	4.6	5.9	12.0	13.4	14.2	
July	4.5	6.4	12.2	13.5	14.3	
August ²	4.5	6.8	12.4	13.5	14.4 ³	
September	4.6	7.1	12.7	14.1	14.3	
October	4.6	7.6	12.9	14.5	14.3	
November ²	4.8	8.1	13.1	14.8	14.4	
December	4.7	8.6	13.0	14.7	14.3	
Annual average	4.5	6.4	11.8	13.6	14.2	

¹ Table contains revised figures.

² Benchmark Quarterly National Household Survey (QNHS) calendar quarter estimates.

³ The latest QNHS estimate of the unemployment rate (adjusted for seasonality) is: July-September 2011, 14.4%.

Table 4 Summary of flows¹ on and off the Live Register

		Number of Weeks	Males				Females			
			Live Register	New Regis- trations	Outflow (derived)	Average Weekly Change	Live Register	New Regis- trations	Outflow (derived)	Average Weekly Change
JB Claims										
2011	February	4	69,409	10,133	11,808	- 419	55,183	9,108	8,537	+ 143
	March	4	67,100	9,026	11,335	- 577	52,967	7,272	9,488	- 554
	April	5	63,982	10,275	13,393	- 624	53,506	10,204	9,665	+ 108
	May	4	61,832	8,167	10,317	- 538	50,275	7,415	10,646	- 808
	June	4	61,562	8,586	8,856	- 68	52,896	9,286	6,665	+ 655
	July	5	60,064	10,329	11,827	- 300	58,926	15,392	9,362	+ 1,206
	August	4	57,999	6,543	8,608	- 516	57,710	6,641	7,857	- 304
	September	5	53,552	9,298	13,745	- 889	47,333	8,831	19,208	- 2,075
	October	4	52,546	8,650	9,656	- 252	46,467	7,275	8,141	- 217
	November	4	52,336	8,891	9,101	- 53	46,878	9,755	9,344	+ 103
	December	5	53,892	9,662	8,106	+ 311	48,771	8,745	6,852	+ 379
2012	January	4	55,964	11,669	9,597	+ 518	48,369	10,242	10,644	- 101
	February	4	55,317	8,814	9,461	- 162	47,937	8,136	8,568	- 108
JA Applications										
2011	January	4	211,071	12,783	10,083	+ 675	78,512	6,744	5,229	+ 379
	February	4	212,334	12,468	11,205	+ 316	79,399	6,619	5,732	+ 222
	March	4	212,973	11,112	10,473	+ 160	79,903	5,651	5,147	+ 126
	April	5	212,464	12,647	13,156	- 102	80,739	7,063	6,227	+ 167
	May	4	216,003	11,615	8,076	+ 885	83,630	6,882	3,991	+ 723
	June	4	223,956	13,754	5,801	+ 1,988	89,738	9,252	3,144	+ 1,527
	July	5	227,000	15,220	12,176	+ 609	93,701	10,503	6,540	+ 793
	August	4	227,981	10,924	9,943	+ 245	95,116	6,662	5,247	+ 354
	September	5	217,752	15,097	25,326	- 2,046	88,805	9,261	15,572	- 1,262
	October	4	214,305	12,325	15,772	- 862	87,028	7,091	8,868	- 444
	November	4	213,285	11,142	12,162	- 255	86,606	6,601	7,023	- 106
	December	5	214,817	11,762	10,230	+ 306	86,636	5,948	5,918	+ 6
2012	January	4	216,706	11,651	9,762	+ 472	87,494	6,424	5,566	+ 215
	February	4	216,743	11,044	11,007	+ 9	87,940	6,345	5,899	+ 112
Other Registrants										
2011	January	4	9,848	782	469	+ 78	17,550	1,398	949	+ 112
	February	4	10,063	640	425	+ 54	17,911	1,156	795	+ 90
	March	4	10,152	477	388	+ 22	18,098	948	761	+ 47
	April	5	10,299	575	428	+ 29	18,581	1,232	749	+ 97
	May	4	10,455	478	322	+ 39	18,752	958	787	+ 43
	June	4	10,631	551	375	+ 44	19,165	1,074	661	+ 103
	July	5	10,706	757	682	+ 15	19,887	1,922	1,200	+ 144
	August	4	10,873	612	445	+ 42	20,034	945	798	+ 37
	September	5	10,684	692	881	- 38	19,315	1,311	2,030	- 144
	October	4	10,744	651	591	+ 15	19,342	1,042	1,015	+ 7
	November	4	10,905	577	416	+ 40	19,557	1,193	978	+ 54
	December	5	11,014	689	580	+ 22	19,654	1,125	1,028	+ 19
2012	January	4	11,223	734	525	+ 52	19,833	1,309	1,130	+ 45
	February	4	11,390	595	428	+ 42	20,095	1,168	906	+ 66

¹ Flow analysis: inflows and outflows published in this table do not take account of inter-scheme activity within the Live Register. For example, if a claimant exhausts his/her entitlement to JB and opens a new JA claim this is counted as an outflow in JB and an inflow in JA.

Table 5 Persons on the Live Register classified by region

NUTS2 and NUTS3 Regions ¹	February 2011	January 2012	February 2012	Monthly change	Annual change	Under 25 years	25 years & over
Males							
Border, Midland and Western	89,878	86,683	86,259	- 424	- 3,619	14,511	71,748
Border	41,184	39,810	39,598	- 212	- 1,586	6,895	32,703
Midland	22,059	21,683	21,573	- 110	- 486	3,584	17,989
West	26,635	25,190	25,088	- 102	- 1,547	4,032	21,056
Southern and Eastern	201,928	197,210	197,191	- 19	- 4,737	31,700	165,491
Dublin	69,764	68,579	69,078	+ 499	- 686	11,505	57,573
Mid-East	27,789	27,208	27,210	+ 2	- 579	4,247	22,963
Mid-West	25,607	24,465	24,338	- 127	- 1,269	3,900	20,438
South-East	37,884	37,483	37,397	- 86	- 487	6,375	31,022
South-West	40,884	39,475	39,168	- 307	- 1,716	5,673	33,495
Total	291,806	283,893	283,450	- 443	- 8,356	46,211	237,239
Females							
Border, Midland and Western	47,596	49,058	49,084	+ 26	+ 1,488	9,304	39,780
Border	21,643	22,286	22,274	- 12	+ 631	4,242	18,032
Midland	11,425	11,872	11,894	+ 22	+ 469	2,468	9,426
West	14,528	14,900	14,916	+ 16	+ 388	2,594	12,322
Southern and Eastern	104,897	106,638	106,888	+ 250	+ 1,991	19,421	87,467
Dublin	34,762	35,059	35,429	+ 370	+ 667	6,665	28,764
Mid-East	15,084	15,214	15,189	- 25	+ 105	2,556	12,633
Mid-West	13,702	14,035	14,064	+ 29	+ 362	2,628	11,436
South-East	19,503	20,271	20,197	- 74	+ 694	3,963	16,234
South-West	21,846	22,059	22,009	- 50	+ 163	3,609	18,400
Total	152,493	155,696	155,972	+ 276	+ 3,479	28,725	127,247
All Persons							
Border, Midland and Western	137,474	135,741	135,343	- 398	- 2,131	23,815	111,528
Border	62,827	62,096	61,872	- 224	- 955	11,137	50,735
Midland	33,484	33,555	33,467	- 88	- 17	6,052	27,415
West	41,163	40,090	40,004	- 86	- 1,159	6,626	33,378
Southern and Eastern	306,825	303,848	304,079	+ 231	- 2,746	51,121	252,958
Dublin	104,526	103,638	104,507	+ 869	- 19	18,170	86,337
Mid-East	42,873	42,422	42,399	- 23	- 474	6,803	35,596
Mid-West	39,309	38,500	38,402	- 98	- 907	6,528	31,874
South-East	57,387	57,754	57,594	- 160	+ 207	10,338	47,256
South-West	62,730	61,534	61,177	- 357	- 1,553	9,282	51,895
Total	444,299	439,589	439,422	- 167	- 4,877	74,936	364,486

¹ The composition of the regions is described in the Background Notes.

Table 6 Persons on the Live Register classified by last held occupation

Broad occupational group	February 2011	January 2012	February 2012	Monthly change	Annual change	Under 25 years	25 years & over
Males							
Managers and administrators	10,213	10,117	10,118	+ 1	- 95	416	9,702
Professional	11,996	11,704	11,443	- 261	- 553	984	10,459
Associate professional and technical	7,657	7,152	7,049	- 103	- 608	900	6,149
Clerical and secretarial	11,593	11,470	11,513	+ 43	- 80	1,732	9,781
Craft and related	107,579	99,184	98,687	- 497	- 8,892	12,229	86,458
Personal and protective service	18,906	18,899	19,069	+ 170	+ 163	3,168	15,901
Sales	16,970	17,702	18,064	+ 362	+ 1,094	5,817	12,247
Plant and machine operatives	56,033	55,630	55,705	+ 75	- 328	7,519	48,186
Other occupation	41,067	40,506	40,259	- 247	- 808	8,071	32,188
No occupation ¹	9,792	11,529	11,543	+ 14	+ 1,751	5,375	6,168
Total	291,806	283,893	283,450	- 443	- 8,356	46,211	237,239
Females							
Managers and administrators	6,964	6,823	6,793	- 30	- 171	241	6,552
Professional	11,990	12,470	12,252	- 218	+ 262	963	11,289
Associate professional and technical	5,260	5,232	5,198	- 34	- 62	541	4,657
Clerical and secretarial	31,060	30,444	30,442	- 2	- 618	2,305	28,137
Craft and related	7,336	7,507	7,547	+ 40	+ 211	1,152	6,395
Personal and protective service	32,721	33,463	33,653	+ 190	+ 932	7,121	26,532
Sales	28,253	28,561	28,908	+ 347	+ 655	7,758	21,150
Plant and machine operatives	14,865	15,336	15,330	- 6	+ 465	2,566	12,764
Other occupation	8,731	9,448	9,439	- 9	+ 708	2,848	6,591
No occupation ¹	5,313	6,412	6,410	- 2	+ 1,097	3,230	3,180
Total	152,493	155,696	155,972	+ 276	+ 3,479	28,725	127,247
All Persons							
Managers and administrators	17,177	16,940	16,911	- 29	- 266	657	16,254
Professional	23,986	24,174	23,695	- 479	- 291	1,947	21,748
Associate professional and technical	12,917	12,384	12,247	- 137	- 670	1,441	10,806
Clerical and secretarial	42,653	41,914	41,955	+ 41	- 698	4,037	37,918
Craft and related	114,915	106,691	106,234	- 457	- 8,681	13,381	92,853
Personal and protective service	51,627	52,362	52,722	+ 360	+ 1,095	10,289	42,433
Sales	45,223	46,263	46,972	+ 709	+ 1,749	13,575	33,397
Plant and machine operatives	70,898	70,966	71,035	+ 69	+ 137	10,085	60,950
Other occupation	49,798	49,954	49,698	- 256	- 100	10,919	38,779
No occupation ¹	15,105	17,941	17,953	+ 12	+ 2,848	8,605	9,348
Total	444,299	439,589	439,422	- 167	- 4,877	74,936	364,486

¹ Includes those who never worked and those who have no stated occupation.

Table 7 Persons on the Live Register classified by duration of continuous registration

Duration	February 2011	January 2012	February 2012	Monthly change	Annual change	Under 25 years	25 years & over
Males							
Less than one year	171,134	150,993	150,247	- 746	- 20,887	28,232	122,015
One year or more	120,672	132,900	133,203	+ 303	+ 12,531	17,979	115,224
Total	291,806	283,893	283,450	- 443	- 8,356	46,211	237,239
Females							
Less than one year	109,340	104,747	104,620	- 127	- 4,720	20,112	84,508
One year or more	43,153	50,949	51,352	+ 403	+ 8,199	8,613	42,739
Total	152,493	155,696	155,972	+ 276	+ 3,479	28,725	127,247
All Persons							
Less than one year	280,474	255,740	254,867	- 873	- 25,607	48,344	206,523
One year or more	163,825	183,849	184,555	+ 706	+ 20,730	26,592	157,963
Total	444,299	439,589	439,422	- 167	- 4,877	74,936	364,486

Table 8 Casual and part-time workers on the Live Register

		Males	Monthly change	Females	Monthly change	All Persons	Monthly change
2010	February	42,026	+ 1,283	37,263	+ 1,143	79,289	+ 2,426
	March	42,284	+ 258	37,565	+ 302	79,849	+ 560
	April	41,713	- 571	37,396	- 169	79,109	- 740
	May	41,602	- 111	37,273	- 123	78,875	- 234
	June	41,790	+ 188	37,449	+ 176	79,239	+ 364
	July	41,624	- 166	37,448	- 1	79,072	- 167
	August	41,162	- 462	37,120	- 328	78,282	- 790
	September	40,399	- 763	36,480	- 640	76,879	- 1,403
	October	40,914	+ 515	37,010	+ 530	77,924	+ 1,045
	November	42,162	+ 1,248	38,046	+ 1,036	80,208	+ 2,284
	December	43,510	+ 1,348	38,548	+ 502	82,058	+ 1,850
	2011	January	44,117	+ 607	39,115	+ 567	83,232
February		45,086	+ 969	39,973	+ 858	85,059	+ 1,827
March		45,603	+ 517	40,552	+ 579	86,155	+ 1,096
April		45,447	- 156	40,147	- 405	85,594	- 561
May		45,071	- 376	39,862	- 285	84,933	- 661
June		45,609	+ 538	40,156	+ 294	85,765	+ 832
July		45,639	+ 30	40,226	+ 70	85,865	+ 100
August		45,312	- 327	39,984	- 242	85,296	- 569
September		44,731	- 581	39,286	- 698	84,017	- 1,279
October		45,234	+ 503	39,795	+ 509	85,029	+ 1,012
November		45,914	+ 680	40,698	+ 903	86,612	+ 1,583
December		46,044	+ 130	40,771	+ 73	86,815	+ 203
2012	January	46,256	+ 212	40,773	+ 2	87,029	+ 214
	February	47,038	+ 782	41,176	+ 403	88,214	+ 1,185

Table 9 Persons on the Live Register classified by nationality grouping

		Nationality grouping						
		Non-Irish nationals						
		United Kingdom	EU15 excl. Irl. & UK	EU15 to EU27 States	Other	Non-Irish nationals	Irish nationals	All Persons
2010	February	18,413	4,139	45,338	13,376	81,266	355,690	436,956
	March	18,238	4,039	44,486	13,278	80,041	355,080	435,121
	April	18,081	3,955	43,248	13,107	78,391	354,266	432,657
	May	18,217	3,964	42,416	13,472	78,069	359,853	437,922
	June	18,619	4,028	41,856	14,342	78,845	374,037	452,882
	July	18,979	4,100	41,570	14,563	79,212	387,612	466,824
	August	19,007	4,115	41,154	14,581	78,857	388,066	466,923
	September	18,190	3,902	40,427	13,926	76,445	365,972	442,417
	October	17,715	3,755	40,065	13,100	74,635	354,918	429,553
	November	17,598	3,705	40,728	12,751	74,782	350,220	425,002
	December	17,855	3,704	42,198	12,888	76,645	360,434	437,079
	2011	January	18,078	3,793	43,619	13,037	78,527	364,150
February		18,065	3,813	44,167	13,117	79,162	365,137	444,299
March		17,956	3,817	43,722	13,099	78,594	362,599	441,193
April		18,021	3,729	42,698	13,075	77,523	362,048	439,571
May		18,075	3,711	41,791	13,401	76,978	363,969	440,947
June		18,648	3,829	42,013	14,431	78,921	379,027	457,948
July		19,006	3,872	41,732	14,675	79,285	390,999	470,284
August		18,925	3,847	41,330	14,893	78,995	390,718	469,713
September		17,894	3,586	40,000	13,941	75,421	362,020	437,441
October		17,708	3,545	40,202	13,582	75,037	355,395	430,432
November		17,648	3,571	40,788	13,512	75,519	354,048	429,567
December		17,798	3,605	41,263	13,554	76,220	358,564	434,784
2012	January	17,827	3,648	42,831	13,845	78,151	361,438	439,589
	February	17,783	3,685	43,341	13,946	78,755	360,667	439,422

Background Notes

Source and scope of the Live Register The Live Register is compiled from returns made for each local office to the Central Statistics Office by the Department of Social Protection. It comprises persons under 65 years of age in the following classes:

- ◆ All Claimants for Jobseeker's Benefit (JB) excluding systematic short-time workers
- ◆ Applicants for Jobseeker's Allowance (JA) excluding smallholders/farm assists and other self-employed persons
- ◆ Other registrants including applicants for credited Social Welfare contributions but excluding those directly involved in an industrial dispute.

Reference Period The reference periods for the Live Register results are as follows:
February 2012 – 28th January to 24th February 2012
February 2011 – 29th January to 25th February 2011

Unemployment statistics The Live Register is not designed to measure unemployment. It includes part-time (those who work up to three days a week), seasonal and casual workers entitled to Jobseeker's Allowance or Jobseeker's Benefit. **Unemployment is measured by the Quarterly National Household Survey** (formerly the Annual Labour Force Survey).

Standardised unemployment rates The Standardised Unemployment Rate (SUR) series in Table 3 is based on the estimated number of persons unemployed expressed as a percentage of the total economically active population (i.e. the Labour Force), using internationally comparable definitions of employment and unemployment, as recommended by the International Labour Office.

Official estimates of the number of persons unemployed and the unemployment rate are produced from the Quarterly National Household Survey (QNHS). The QNHS is the only source of information on unemployment and employment which can apply standard International Labour Organisation (ILO) methodology to the estimation of these key indicators. The background notes of the QNHS release contain more information on the ILO criteria. Given the timelag required to produce estimates from the QNHS and the quarterly periodicity, short-term trends in the Live Register are used to estimate more up-to-date monthly unemployment rates.

The seasonally adjusted QNHS estimate of unemployment is used as a benchmark for February (Quarter 1 QNHS), May (Quarter 2 QNHS), August (Quarter 3 QNHS) and November (Quarter 4 QNHS) each year. The latest QNHS benchmark is updated using the trend in the seasonally adjusted Live Register to allow the estimation of the SUR. Once new QNHS data is available it is used to revise the SUR series. The assumption underlying this methodology is that over short periods the change in the seasonally adjusted Live Register will represent accurately the change in unemployment which will be seen from the QNHS. This methodology has been used since the QNHS was first initiated at the end of 1997.

QNHS The Quarterly National Household Survey (QNHS), which began in September 1997, replaced the Labour Force Survey and provides quarterly estimates of the unemployment rate. Up to and including the fourth quarter of 2008 the QNHS operated on a seasonal quarter basis. As of the first quarter 2009 the QNHS is now undertaken on a calendar quarter basis.

The calendar reference quarters for survey results are:

Q1 - January to March, Q2 - April to June, Q3 - July to September and Q4 - October to December.

The calendar quarter estimates for Q3 2011 (adjusted for seasonality) are:

	Q1	Q2	Q3	Q4
	%	%	%	%
2006	4.4	4.5	4.6	4.3
2007	4.4	4.6	4.5	4.8
2008	4.8	5.6	6.8	8.1
2009	10.1	11.8	12.4	13.1
2010	12.8	13.5	13.5	14.8
2011	13.9	14.2	14.4	

Seasonal adjustment Since January 2011 the seasonal adjustment of the Live Register is completed by applying the X-12-ARIMA model, developed by the U.S. Census Bureau. Seasonal adjustment is conducted using the indirect approach, where each individual series is independently adjusted (male under 25 years, female under 25 years, male 25 years and over and female 25 years and over). To preserve consistency between the individual and aggregate series, the series for gender, age group and total Live Register are then created from these four component series.

The X-12 ARIMA method has the X-11 moving averages process at its core, but builds on this by providing options for pre-treating the series using a regARIMA approach for prior adjustment and series extension. In essence this methodology will estimate seasonal factors while taking account of temporary changes, outliers, level shifts and calendar effects (e.g timing of Easter).

All Live Register series are updated monthly with the latest three years of seasonally adjusted data as part of the concurrent approach. The comprehensive annual review contains revisions to the entire series. Revisions to the series are typically very minor in scale.

For additional information on the use of X-12-ARIMA see detailed note in the January 2011 Live Register release.

Jobseeker's Benefit Duration Prior to 19 January 2004 Jobseeker's Benefit was payable for **15 months** (390 days).

From 19 January 2004, Jobseeker's Benefit could be paid for a maximum of **15 months** (390 days) to people who had at least 260 paid PRSI contributions. Jobseeker's Benefit could be paid for a maximum of **12 months** (312 days) to people who had less than 260 paid contributions. (Refers to new claims).

Since 15 October 2008, Jobseeker's Benefit can be paid for a maximum of **12 months** (312 days) to people who have at least 260 paid PRSI contributions. Jobseeker's Benefit can be paid for a maximum of **9 months** (234 days) to people who have less than 260 paid contributions. (Refers to new claims).

Live Register Flows Live Register flows data is sourced from information collected by the Department of Social Protection. The aggregate of new registrations for each month is used in conjunction with the net change over the same period to calculate the outflow from the register. A new registration is defined as anybody on the Live Register in a particular month who was not on it the previous month. Inflows and outflows published in this release do not take account of inter-scheme activity within the Live Register. For example, if a claimant exhausts his/her entitlement to JB and opens a new JA claim this is counted as an outflow in JB and an inflow in JA.

Live Register Area Analysis The basis of the area analysis in Live Register statistics is the Department of Social Protection local office of registration. The areas served by Local Employment Offices do not correspond to specific geographic boundaries. Therefore, registrants at a given local office do not necessarily come from a particular region or area which can be precisely delineated e.g. data for the Cork City Office of Registration refers to all persons signing on in Cork City but may include persons not resident in Cork City. **The latest available Live Register data by Province, County and Local Office of Registration will be released on the CSO website through the CSO Main Data Dissemination Service, StatBank one day after the publication of this release.**

NUTS2 and NUTS3 regions The Regional classifications are based on the NUTS (Nomenclature of Territorial Units) classification used by Eurostat. The NUTS3 regions correspond to the eight Regional Authorities established under the Local Government Act, 1991 (Regional Authorities) (Establishment) Order, 1993, which came into operation on 1 January 1994. The NUTS2 regions, which were proposed by Government and agreed by Eurostat in 1999, are groupings of the NUTS3 regions.

Border, Midland and Western NUTS2 Region

Border	Cavan Donegal Leitrim Louth Monaghan Sligo
Midland	Laois Longford Offaly Westmeath
West	Galway City Galway County Mayo Roscommon

Southern and Eastern NUTS2 Region

Dublin	Dublin City Dun Laoghaire-Rathdown Fingal South Dublin
Mid-East	Kildare Meath Wicklow
Mid-West	Clare Limerick City Limerick County North Tipperary
South-East	Carlow Kilkenny South Tipperary Waterford City Waterford County Wexford
South-West	Cork City Cork County Kerry

Occupations Live Register occupational data is sourced from information collected by the Department of Social Protection on the most recent occupation of claimants when they sign on the Live Register. The classification used is based on the UK Standard Occupational Classification (SOC). “No occupation” is an additional category and includes those who have never worked and those who have no stated occupation.

Age by Duration Analysis Duration of continuous registration on the Live Register was previously compiled on a half-yearly basis (April and October). The Live Register Age by Duration release has now been replaced by a monthly table in this release. The bi-annual release related to the second last Friday of the reference month but the monthly age by duration data since October 2009 corresponds to the end of month Live Register totals. **Detailed tables relating to regional and scheme data will continue to be made available on the CSO website through the CSO Main Data Dissemination Service, StatBank on a bi-annual basis.**

Casual and part-time workers The casual and part-time workers’ figure is based on data supplied by the Department of Social Protection. People may apply for Jobseeker’s Benefit or Jobseeker’s Allowance if they only work for part of a week and be included on the Live Register.

Nationality Data in the nationality grouping table is sourced from information collected by the Department of Social Protection on the nationality of claimants when they first sign on the Live Register.

CSO StatBank More detailed information on geographic breakdowns of the Live Register and duration of continuous registration along with all Live Register published data can be found on the CSO Main Data Dissemination Service, StatBank on the CSO website

<http://www.cso.ie/>

Go to:

- > Databases
- > StatBank (CSO Main Dissemination Service)
- > Labour Market and Earnings
- > Labour Force
- > Live Register

or click

<http://cso.ie/shorturl.aspx/39>

For further information or assistance use the contact details on the front page of the release or e-mail labour@cso.ie