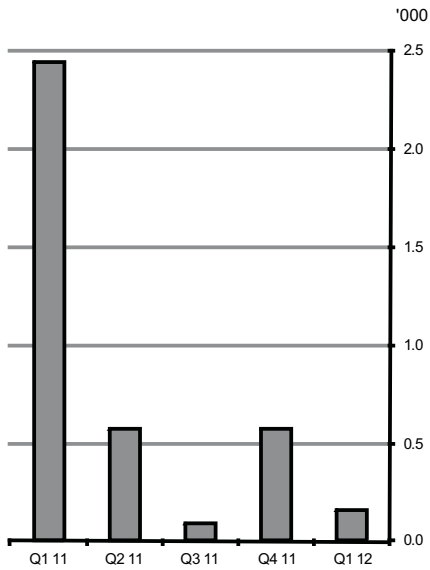




Industrial Disputes

Quarter 1 2012

Days lost per quarter



Disputes in Progress

Quarter	Disputes	Workers	Days lost
Q1 2011	3	335	2,451
Q4 2011	2	580	579
Q1 2012	1	75	161

161 days lost to one industrial dispute in the first quarter of 2012

There was one dispute in progress in the first quarter of 2012 involving 75 workers and one firm. *See table 1.*

This compares with three disputes for the same period last year involving 335 workers and resulting in 2,451 days lost. *See table 2.*

Published by the Central Statistics Office, Ireland.

Ardee Road
Dublin 6
Ireland

Skehard Road
Cork
Ireland

LoCall: 1890 313 414 (ROI)
0870 876 0256 (UK/NI)

Tel: +353 1 498 4000
Fax: +353 1 498 4229

Tel: +353 21 453 5000
Fax: +353 21 453 5492

Both offices may be contacted through any of these telephone numbers.

CSO on the Web: www.cso.ie

and go to

Labour Market and Earnings: Labour Market

Director General: Gerard O'Hanlon

Enquiries:

Labour Market Statistics Direct Dial 021 453 5491

Email labour@cso.ie

General Queries

Information Section, ext 5021

information@cso.ie

© Central Statistics Office

The contents of this release may be quoted provided the source is given clearly and accurately. Reproduction for own or internal use is permitted.

Table 1 Industrial Disputes which began or were in progress in the first quarter of 2012

Economic sector (NACE Rev. 2)	Disputes in progress during Q1 2012				Total days lost
	Disputes which began in Q1 2012	Number of disputes	Number of firms	Number of workers	
A Agriculture, forestry and fishing	–	–	–	–	–
B-E Industry	–	–	–	–	–
F Construction	–	–	–	–	–
G Wholesale and retail trade; repair of motor vehicles and motorcycles	–	–	–	–	–
H Transportation and storage	1	1	1	75	161
I Accommodation and food service activities	–	–	–	–	–
J Information and communication	–	–	–	–	–
K-L Financial, insurance and real estate activities	–	–	–	–	–
M Professional, scientific and technical activities	–	–	–	–	–
N Administrative and support service activities	–	–	–	–	–
O Public administration and defence; compulsory social security	–	–	–	–	–
P Education	–	–	–	–	–
Q Human health and social work activities	–	–	–	–	–
R-U Other NACE activities	–	–	–	–	–
All NACE Economic Sectors Q1 2012	1	1	1	75	161

Table 2 Industrial Disputes which began or were in progress in each quarter, 2004-2012

Year	Quarter	Disputes which began ¹	Disputes in progress			Total days lost
			Number of disputes ²	Number of firms involved ²	Workers involved ²	
2004	Quarter 1	1	3	3	1,361	2,569
	Quarter 2	3	4	4	417	2,801
	Quarter 3	2	4	4	267	3,074
	Quarter 4	3	3	3	8,345	12,340
	Total 2004	9	11	11	10,227	20,784
2005	Quarter 1	1	1	1	86	123
	Quarter 2	6	6	6	866	1,556
	Quarter 3	3	4	4	1,083	2,398
	Quarter 4	5	5	5	1,264	22,588
	Total 2005	15	15	14	3,291	26,665
2006	Quarter 1	2	2	2	226	3,407
	Quarter 2	3	4	4	485	1,801
	Quarter 3	4	4	4	209	1,054
	Quarter 4	1	2	2	307	1,090
	Total 2006	10	10	10	1,186	7,352
2007	Quarter 1	3	3	3	435	1,797
	Quarter 2	0	1	1	300	300
	Quarter 3	0	0	0	0	0
	Quarter 4	3	3	3	1,001	3,941
	Total 2007	6	6	6	1,436	6,038
2008	Quarter 1	4	4	4	173	1,477
	Quarter 2	4	5	5	132	695
	Quarter 3	2	3	3	34	578
	Quarter 4	2	4	4	99	1,397
	Total 2008	12	12	10	356	4,147
2009	Quarter 1	1	3	3	12,020	11,327
	Quarter 2	6	6	6	1,496	3,289
	Quarter 3	11	13	158	11,646	66,826
	Quarter 4	3	8	8	266,334	248,151
	Total 2009	21	23	168	278,228	329,593
2010	Quarter 1	6	8	8	330	4,217
	Quarter 2	2	3	3	22	1,136
	Quarter 3	3	4	4	156	1,222
	Quarter 4	1	1	1	31	27
	Total 2010	12	14	14	511	6,602
2011	Quarter 1	3	3	3	335	2,451
	Quarter 2	2	3	3	462	572
	Quarter 3	1	1	1	17	93
	Quarter 4	2	2	2	580	579
	Total 2011	8	8	8	1,384	3,695
2012	Quarter 1	1	1	1	75	161

¹ See Scope and Days Lost in Background Notes for more information on criteria for inclusion of disputes.

² The quarterly totals in these columns will not always add to the annual total since an Industrial Dispute can be in progress in more than one quarter.

Background Notes

- Sources** The information on Industrial Disputes is based on details supplied by the Industrial Relations Section, Department of Jobs, Enterprise and Innovation ([www.djei.ie/employment/industrial relations](http://www.djei.ie/employment/industrial%20relations)) and on information collected directly from other sources by the Central Statistics Office.
- Scope** Disputes are included in this release if they involve a stoppage of work lasting for at least one day and the total time lost is 10 or more person-days.
- Days Lost** In calculating days lost, it is assumed that work would have continued if no dispute had occurred. No allowance is made for loss of work from unemployment or other causes (such as bad weather) which might have happened even if there was no dispute. The number of days lost is calculated by multiplying the number of persons involved by the number of normal working days during which they were involved in the dispute. Persons working for approximately 40 hours per week are assumed to be working the equivalent of a 5 day week even if the work is spread over more than 5 days.
- Disputes in Progress** The tables show data on disputes which began and disputes which were in progress in each quarter. The quarterly figures for the number of disputes in progress and for the number of firms and workers involved will not always add to the annual total, since an industrial dispute can be in progress in more than one quarter.
- Reference Quarters** The reference quarters for Industrial Disputes results are:
Q1 - January to March, Q2 - April to June, Q3 - July to September and Q4 - October to December.